

DOCKETED

Docket Number:	15-AFC-02
Project Title:	Mission Rock Energy Center
TN #:	212116-1
Document Title:	Ventura County Airports Comments on Mission Rock
Description:	N/A
Filer:	Cenne Jackson
Organization:	County of Ventura, Department of Airports/Todd McNamee, AAE
Submitter Role:	Public Agency
Submission Date:	7/5/2016 2:42:53 PM
Docketed Date:	7/5/2016

June 28, 2016

California Energy Commission
ATTN: Mr. Scott Polaske, Energy Analyst
1516 9th Street, MS 40
Sacramento, CA 95814

RE: Comments on Proposed Mission Rock Energy Center and Associated Transmission Lines

Dear Mr. Polaske:

I have been copied on comments submitted on behalf of the Santa Paula Airport (SZP) as it pertains to the Mission Rock Energy Center and as the Director of Airports overseeing Camarillo (CMA) and Oxnard (OXR) Airports, I concur with those comments. Further, I wanted to make you aware of the potential impact to certain approaches to CMA.

It appears that the Mission Rock Energy Center and the associated transmission lines will lie under the approach path from the north into CMA (see attached diagram).

From the Coast

Many aircraft will fly along the edge of the mountains when approaching from the coast and report to the Camarillo Air Traffic Control Tower at the Saticoy Bridge. This would result in overflight of the westernmost transmission lines proposed as part of the Mission Rock project.

From the North

Many aircraft flying into CMA from the Central Valley will descend rapidly over the mountains at various altitudes, and will overfly the proposed transmission lines.

From Santa Paula Airport

Aircraft coming and going between SZP and CMA typically travel two paths. The main flight corridor is to travel to the Saticoy Bridge reporting point and then vector to SZP or CMA from there. This would cause overflight of the proposed Energy Center and various portions of the transmission lines.

With the above in mind, the Ventura County Department of Airports wishes to express concern for the safe overflight of the proposed energy center and associated transmission lines. If the project is to move forward, I strongly encourage aviation "Balls", at a minimum, be placed on the transmission lines to raise awareness for pilots. Additionally, if there is a

hazard for overflight created by the exhaust plume from the Energy Center, it is requested that the energy center mitigate such hazard as needed to satisfy the FAA as well as local jurisdictions.

Thank you again for the opportunity to comment. Please call me at 805-388-4200 should you have any questions.

Sincerely,



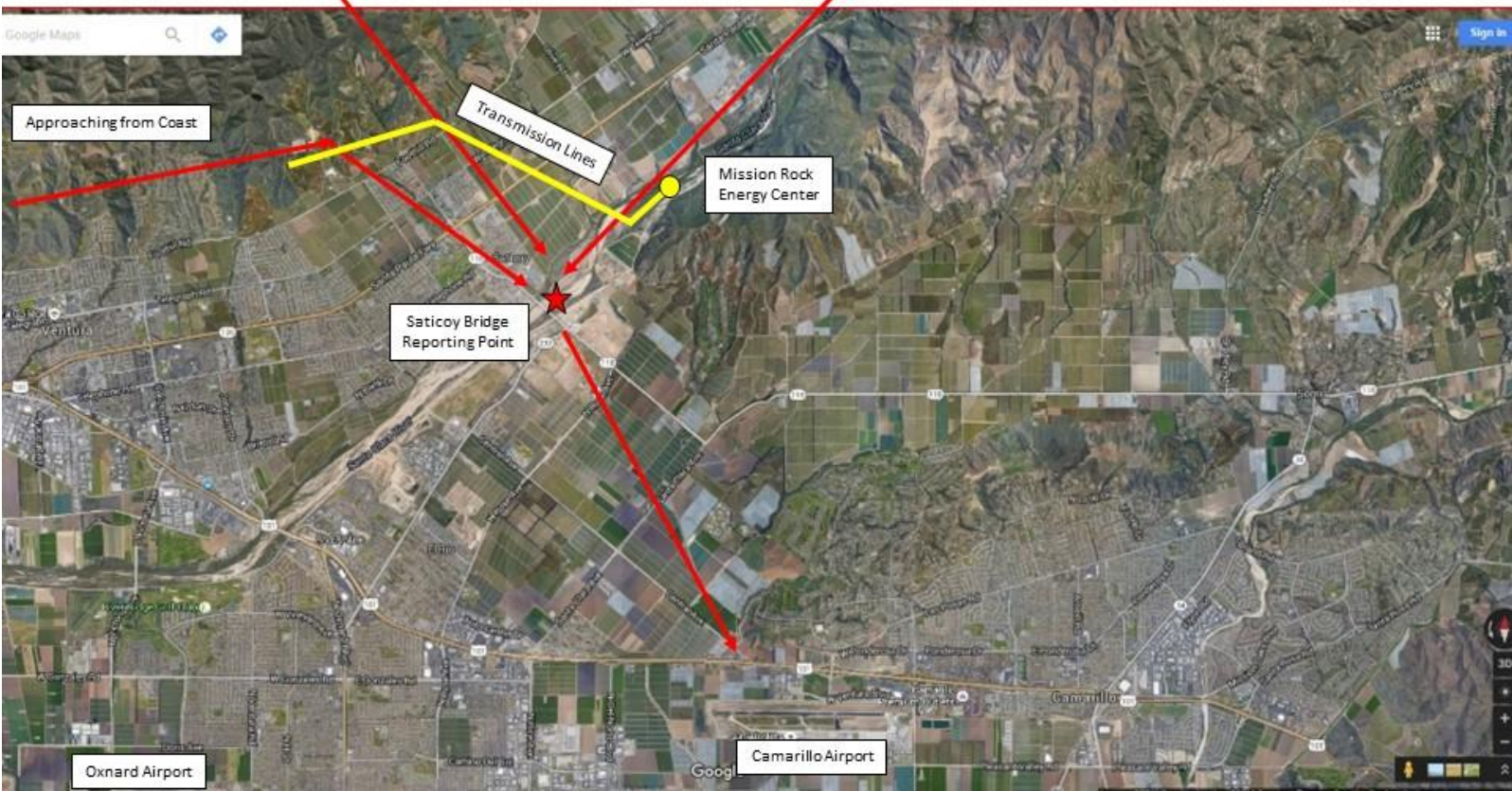
TODD L. MCNAMEE, AAE
Director of Airports

C: Steve DeGeorge, VCTC
AAC/OAA Packets

Enclosure - Approaches to Camarillo Airport Potentially Impacted by Mission Rock
Power Plant and Transmission Lines

Approaches to Camarillo Airport Potentially Impacted by Mission Rock Power Plant and Transmission Lines

Approaching over mountains from North (Central Valley) Santa Paula Airport



Approaching from Coast

Transmission Lines

Mission Rock Energy Center

Saticoy Bridge Reporting Point

Oxnard Airport

Camarillo Airport