

## DOCKETED

<b>Docket Number:</b>	15-IEPR-03
<b>Project Title:</b>	Electricity and Natural Gas Demand Forecast
<b>TN #:</b>	205885-1
<b>Document Title:</b>	CA Energy Commission Joint Agency Workshop on CA Drought Response by Kent Frame of Dept. Of Water Resources
<b>Description:</b>	08-28-2015 Joint Agency Workshop on CA Drought Response
<b>Filer:</b>	Raquel Kravitz
<b>Organization:</b>	California Energy Commission
<b>Submitter Role:</b>	Commission Staff
<b>Submission Date:</b>	8/28/2015 8:17:07 AM
<b>Docketed Date:</b>	8/28/2015

# CA Energy Commission Joint Agency Workshop on CA Drought Response, August 28, 2015

---

KENT FRAME

DEPT. OF WATER RESOURCES/WATER USE EFFICIENCY (WUE)

---



---

DWR Drought Response  
WUE Drought Response  
SIGMA/Storm Water  
NASA Subsidence Report

---

PUBLIC SAFETY

ENVIRONMENTAL STEWARDSHIP

ECONOMIC STABILITY

# **CVP/SWP Drought Contingency Plan**

## **January 15, 2015 – September 30, 2015**

### **Four Primary Goals**

- Operate projects to meet essential human health & safety needs, and preferably to minimize water supply shortages
- Control saltwater intrusion in the Delta
- Preserve cold water in reservoirs for salmon
- Maintain protections for ESA-listed species

### **3 main objectives**

- Export available flows while maintaining Delta water quality and protecting listed fish species
- Conserve reservoir storage
- Manage June-September reservoir releases to benefit instream temperatures, meet Sacramento Valley in-basin needs, and preserve carry-over storage

# Current DWR Activities

- Support Cal OES, SWRCB, CDFA, Local Agencies
- SWP/CVP operations
- Increased focus on groundwater conditions (CASGEM & SGMA)
- Impact monitoring (Fallowed Ag land, Central Valley land subsidence)
- Water Use Efficiency Drought Workshops
- Drought Funding
- Coordination with SWRCB DDW on Emergency Water Supplies
- Emergency assistance for small water systems & private well owners
- Local DTF Support
- Tribe Support
- Water Transfers
- Groundwater Assessments
- Advance Planning

# April 2015 Executive Order

- **25% Conservation**
- **Turf Replacement**
- **Appliance Rebate Program**
- **CI&I Reduced Potable Water Use**
- **Medians – No Potable Water**
- **New Construction**
- **New Rate Structures – Conservation**
- **Monthly Reporting**
- **Diversions**

# April 2015 Executive Order

- **Update Model Landscape Ordinance**
- **Ag Water Management Plans**
- **Groundwater Monitoring**
- **Improved Conservation Appliances**
- **Water Energy Technology**
- **Streamlining State Agency Actions**

# Save Our Water Rebates Website



Save Our Water Rebates program and website launched August 12<sup>th</sup>.

Easy links take the customer directly to the rebate program information or application of their choice.

[SaveOurWaterRebates.com](http://SaveOurWaterRebates.com)



# Next Steps – Long Term

- California Water Action Plan
- Multi-agency Coordination
- Improved Groundwater Information
- Sustainable Groundwater Management
- Surface Water System Resilience
- Reservoir Reoperation
- Consolidation of Water Systems
- Reuse, Recycle, Reclaim

# WUE Storm Water Activities

---

Monitoring Legislation and Regulatory Actions

Set Targets or Actions to Capture Storm Water

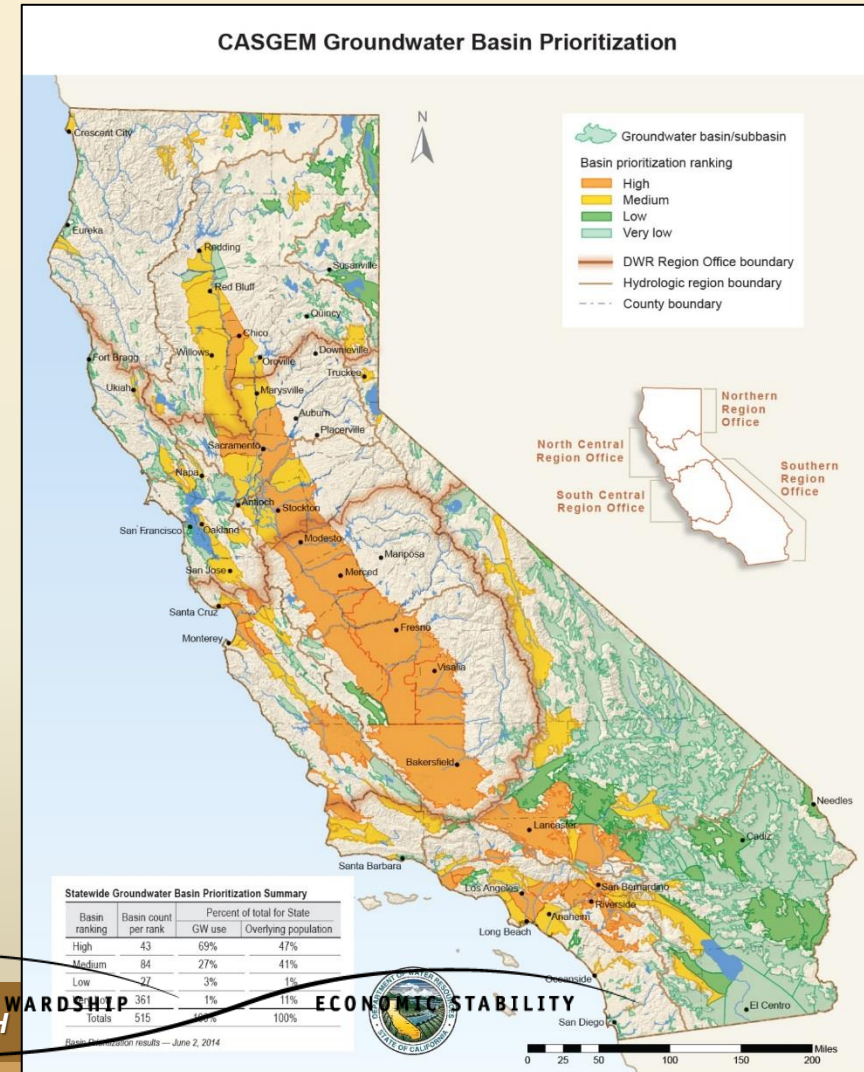
Literature Review (what has been done or needs to be done)

Coordinate with the Water Board

MWELO

# Sustainable Groundwater Management Act of 2014

- Groundwater management is local responsibility
- Requirements for medium- and high-priority basins
- Formation of Groundwater Sustainability Agencies (GSA)
- Development of Groundwater Sustainability Plans (GSP) with timeframes
- Authorizes management tools for GSAs
- State intervention if requirements are not met



PUBLIC SAFETY

ENVIRONMENTAL STEWARDSHIP  
DROUGHT

ECONOMIC STABILITY

# New Local Management Tools

- **Empowers GSAs to:**
  - Register groundwater wells
  - Measure extractions
  - Require reports
  - Manage extractions
  - Assess fees
- **Exempts preparation of local groundwater sustainability plans from CEQA**
- **Establishes “sustainability goal” over time to guide management**



# Chronic Groundwater Overdraft has serious consequences

- Falling groundwater levels
- Dry wells
- Land subsidence
- Infrastructure damage
- Decreased groundwater storage capacity
- Degradation of water quality
- Stream depletion
- Greater sea water intrusion

# Ground water depletion leads to subsidence, infrastructure damage



Measured subsidence near Mendota in 1977

<http://water.usgs.gov/ogw/pubs/fs00165/>

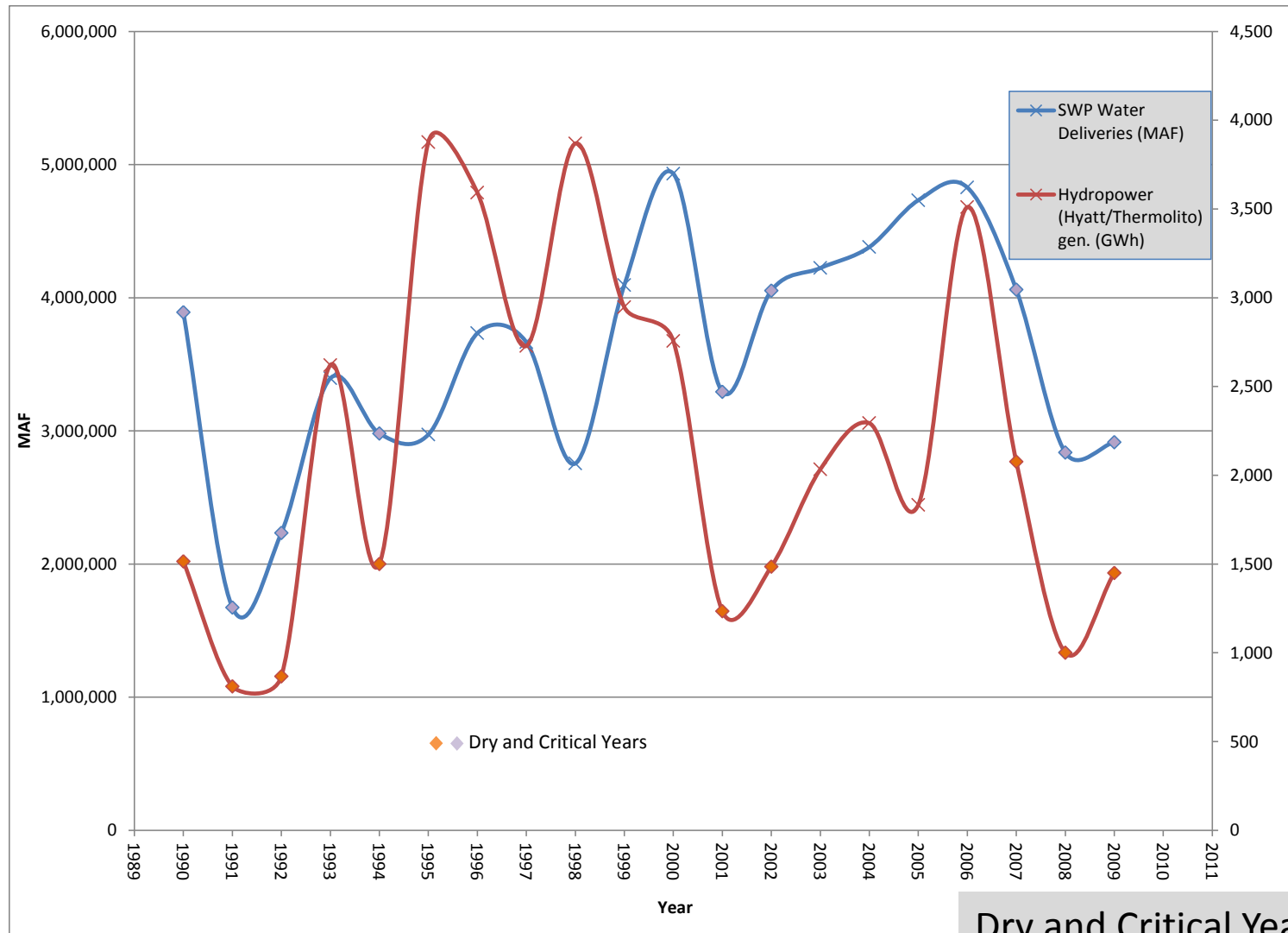
Cracks along Delta Mendota Canal in 2014



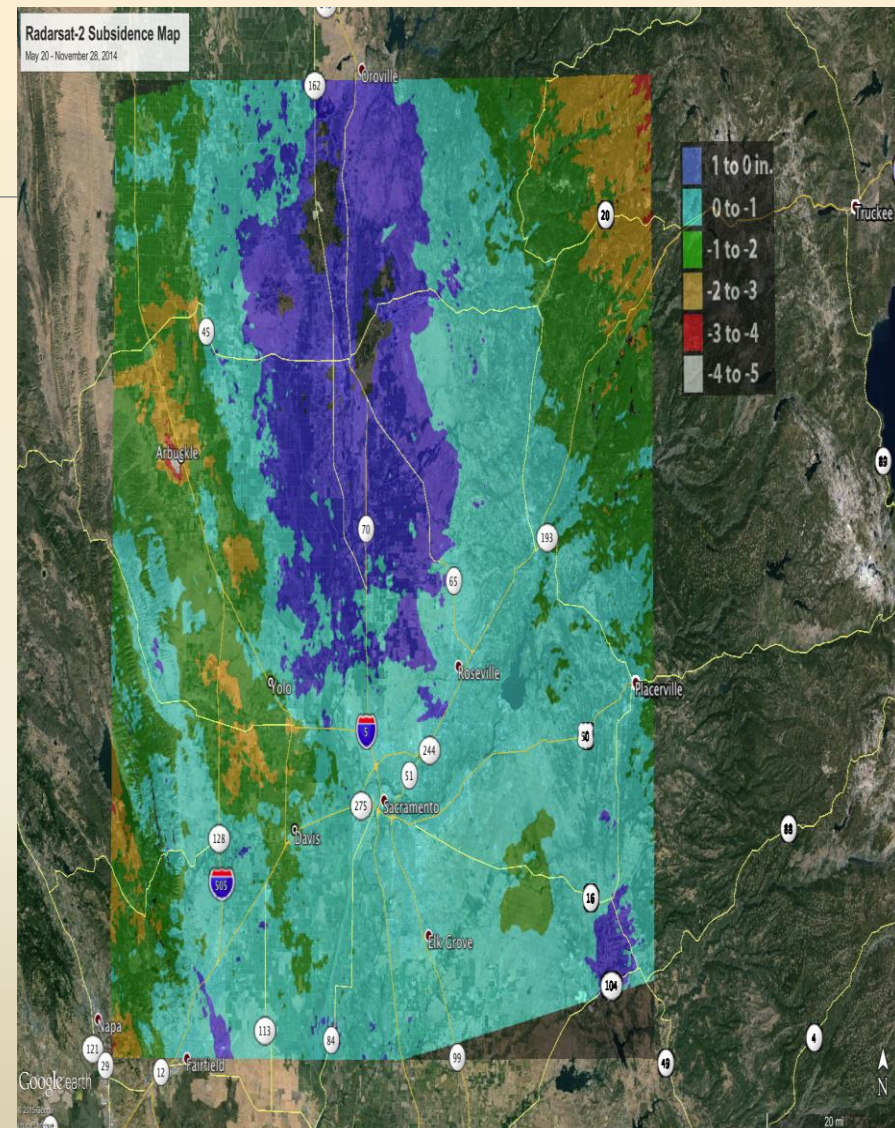
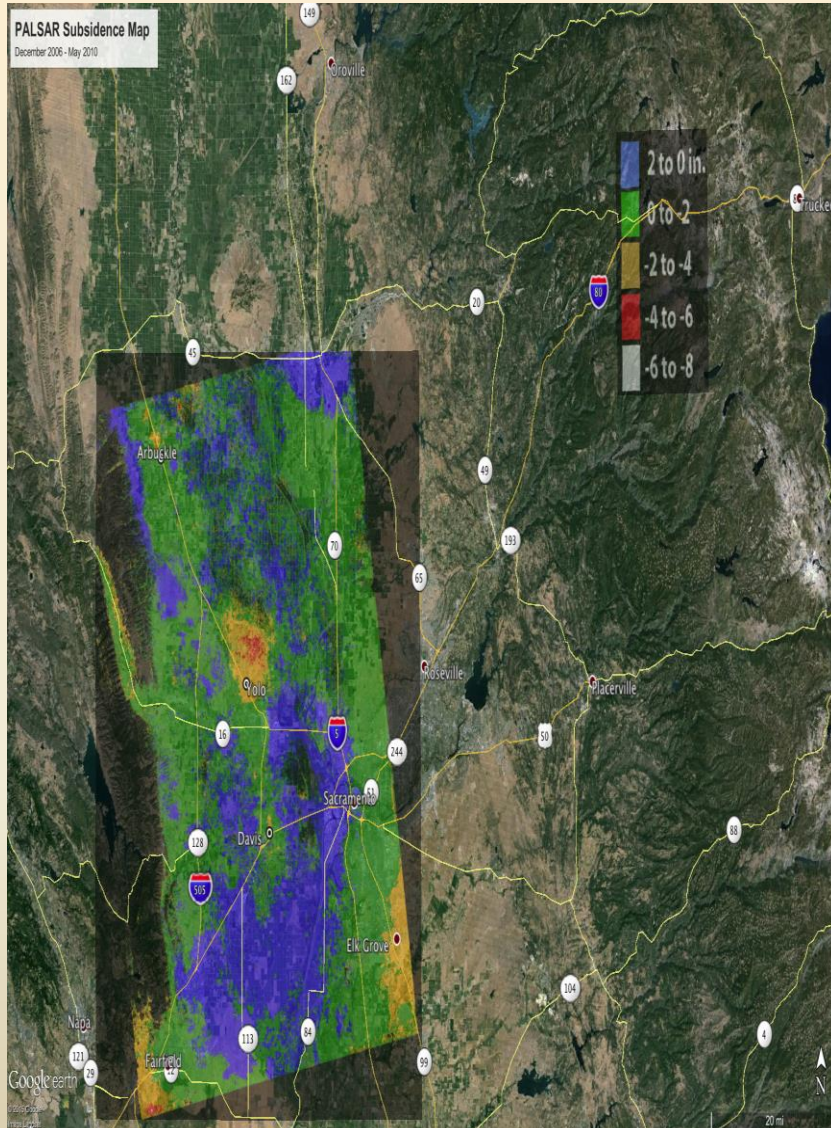
Amy Quinton, Capital Public Radio



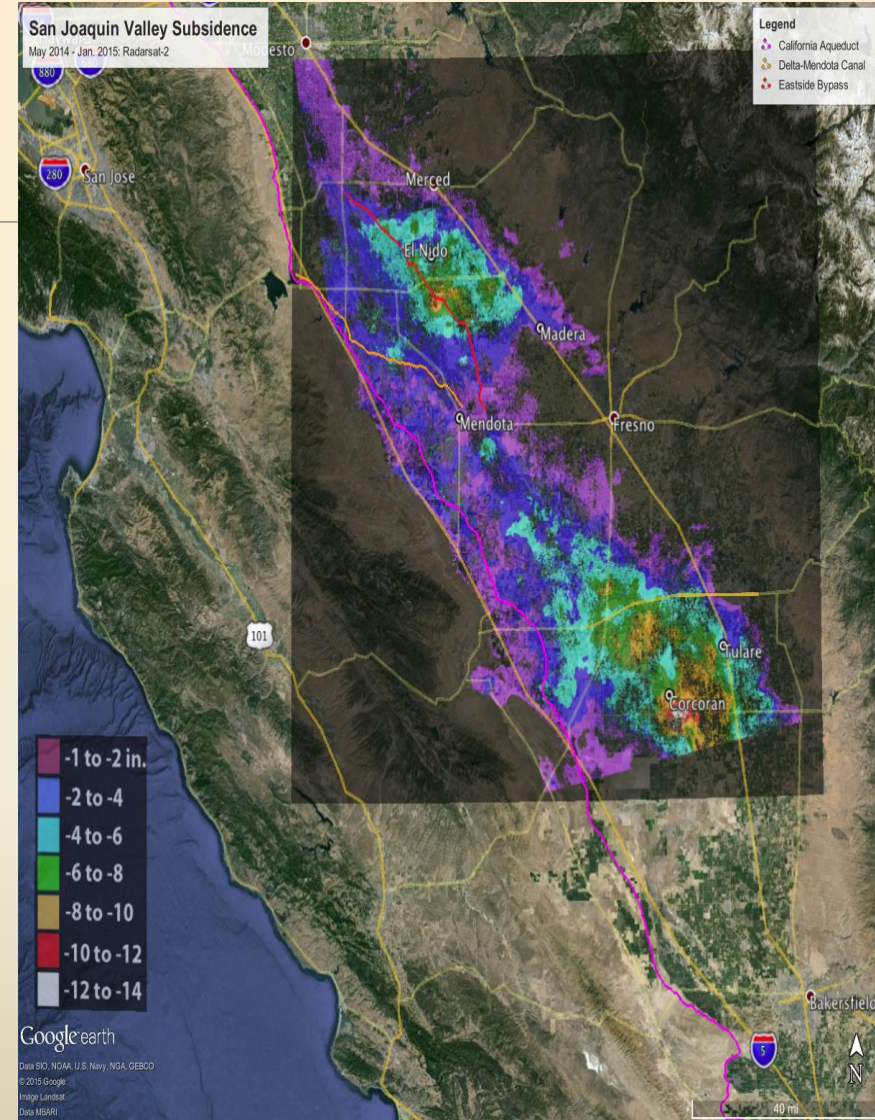
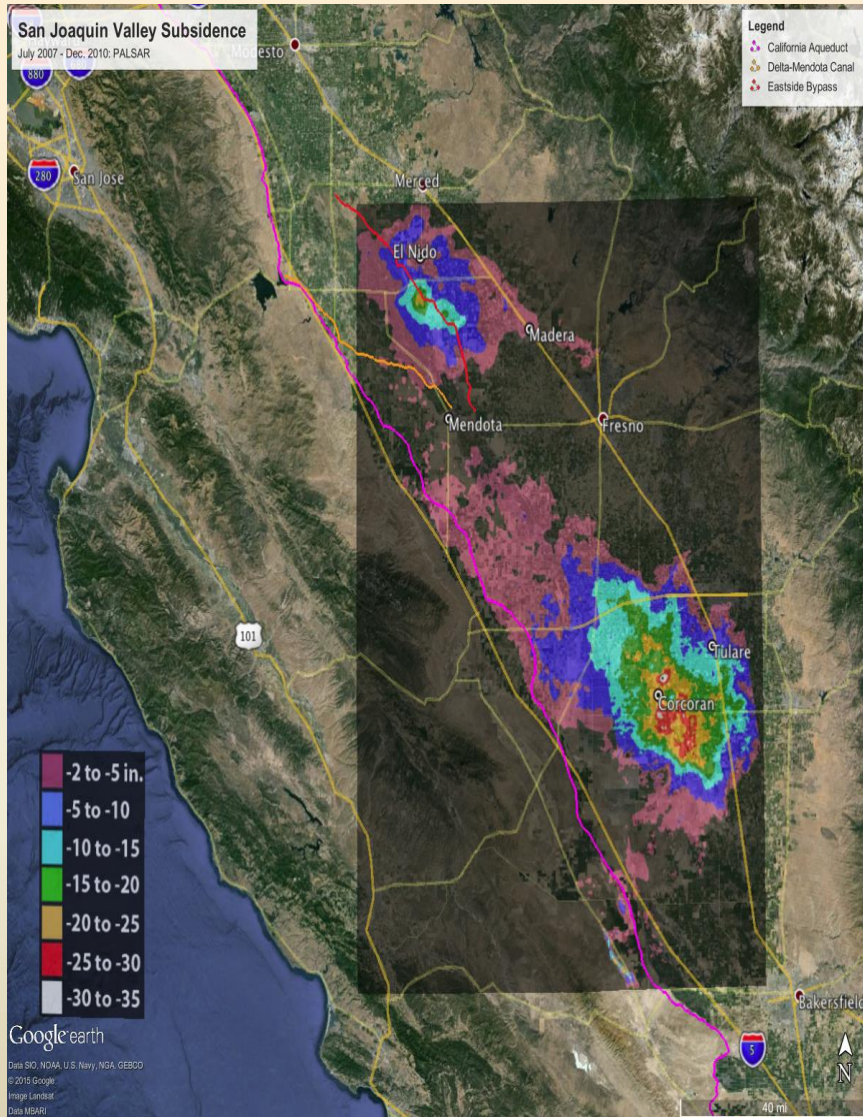
# SWP Hydropower vs Water Deliveries



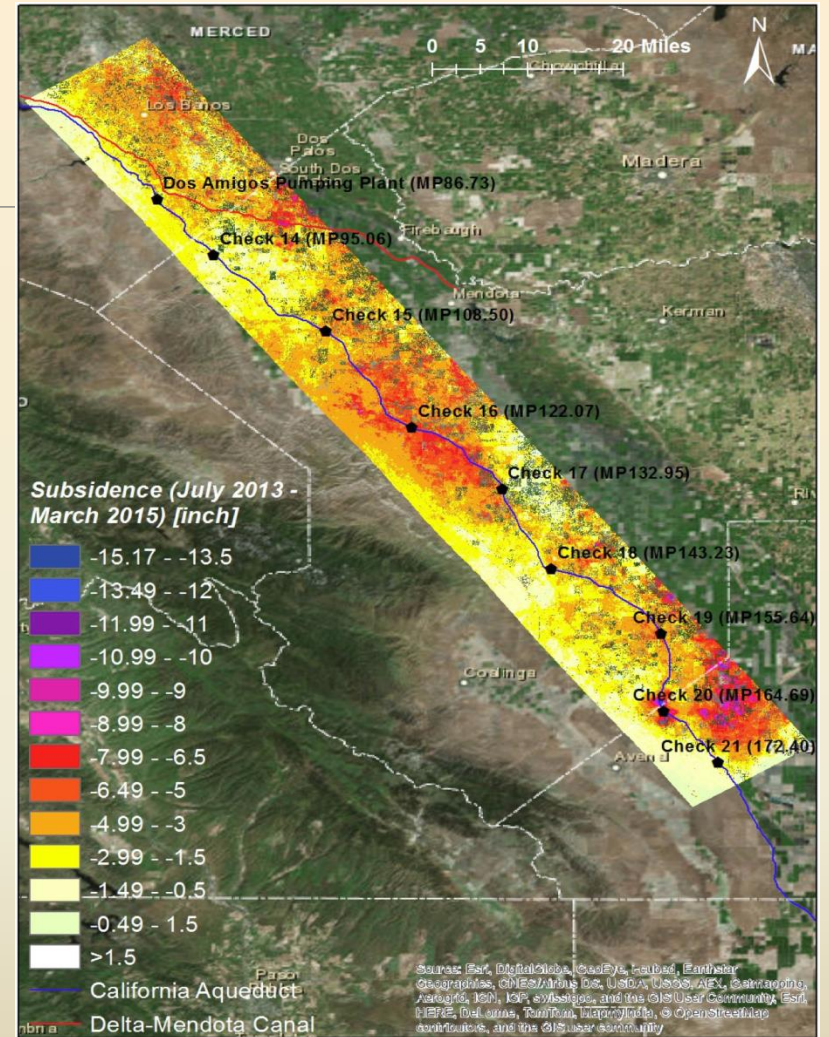
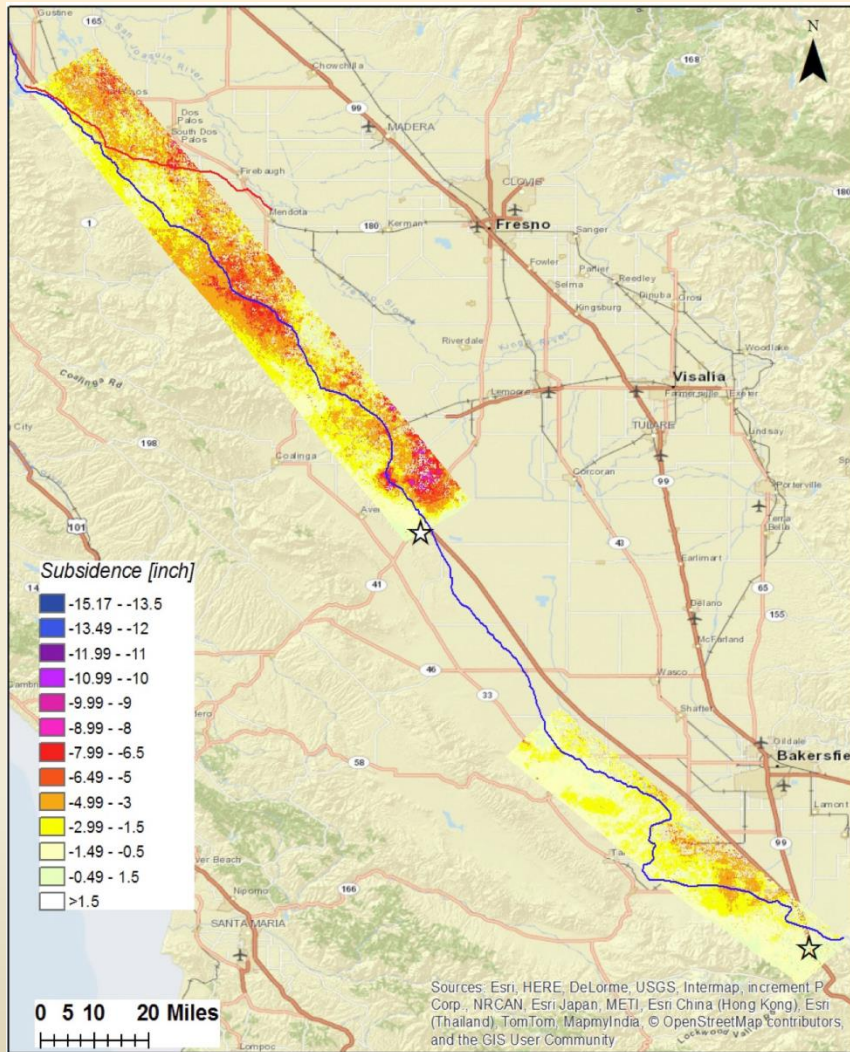
**Dry and Critical Years**  
Water Deliveries -13%  
Hydro Generation -40%  
Below long-term averages











# Thank You

- Questions
- [Kent.frame@water.ca.gov](mailto:Kent.frame@water.ca.gov)