

## DOCKETED

<b>Docket Number:</b>	09-AFC-07C
<b>Project Title:</b>	Palen Solar Power Project - Compliance
<b>TN #:</b>	201300
<b>Document Title:</b>	Exh. 3086 Desert Sunlight Air Quality Monitoring Report Sept. 2013
<b>Description:</b>	AQ monitoring report
<b>Filer:</b>	Ileene Anderson
<b>Organization:</b>	Center for Biological Diversity
<b>Submitter Role:</b>	Intervenor
<b>Submission Date:</b>	11/21/2013 4:51:26 PM
<b>Docketed Date:</b>	11/21/2013

**Desert Sunlight Solar Farm  
Air Quality Monitoring Report**

**September 2013**





# Report Index

## Tables/Figures

Number	Table/Figure Name
Table 1	PM10 24-hour Time-Weighted Averages, All Sites
Table 2	PM2.5 24-hour Time-Weighted Averages, All Sites
Table 3	Hourly BAM Data, All Sites
Table 4	Monitored Constituents
Figure 1	Meteorological Data Summary



**Table 1: PM10 24-hour Time-Weighted Averages, All Sites  
(See Footnotes)**

All values are in units of micrograms per cubic meter.

Date	North Station	East Station	South Station	West Station
9/1/2013	59	57	No Data	57
9/2/2013	79	72	No Data	106
9/3/2013	15	18	No Data	14
9/4/2013	40	46	No Data	46
9/5/2013	9	9	No Data	8
9/6/2013	134	111	---	106
9/7/2013	15	63	---	15
9/8/2013	27	50	---	12
9/9/2013	22	25	---	18
9/10/2013	6	5	---	5
9/11/2013	8	10	---	27
9/12/2013	15	12	---	12
9/13/2013	12	14	---	12
9/14/2013	15	16	---	14
9/15/2013	13	12	---	12
9/16/2013	10	13	---	12
9/17/2013	20	20	---	13
9/18/2013	26	32	---	25
9/19/2013	27	31	---	25
9/20/2013	22	42	---	21
9/21/2013	21	22	---	22
9/22/2013	45	99	---	No Data
9/23/2013	10	11	---	No Data
9/24/2013	10	14	18	---
9/25/2013	46	167	230	46
9/26/2013	36	42	77	31
9/27/2013	21	45	112	18
9/28/2013	4	5	---	3
9/29/2013	5	7	5	5
9/30/2013	12	12	13	11

**Note 1:** Please refer to Table 3 for the raw hourly data and treatment of valid and invalid values. All values in the above table are at actual conditions.

**Note 2:** Days marked 'No Data' are days for which there is no hourly data.

**Note 3:** Days marked (---) are days for which there is either more than 7 hours of negative data points or more than 12 hours of invalid data points.



**Table 2: PM2.5 24-hour Time-Weighted Averages, All Sites  
(See Footnotes)**

All values are in units of micrograms per cubic meter.

Date	North Station	East Station	South Station	West Station
9/1/2013	6.2	5.4	No Data	7.8
9/2/2013	14.5	12.9	No Data	9.7
9/3/2013	3	3.6	No Data	5.8
9/4/2013	18.2	5.8	No Data	5.7
9/5/2013	3.2	2.6	No Data	4.6
9/6/2013	10.2	23.2	---	11.4
9/7/2013	3.5	5.8	---	6
9/8/2013	3.7	4	---	5.5
9/9/2013	2.8	4	---	4.5
9/10/2013	3	4	---	4.3
9/11/2013	2.1	3.2	---	3.5
9/12/2013	5	3.3	---	---
9/13/2013	4.4	5.3	5.8	4.3
9/14/2013	5.5	5.9	5.2	5.4
9/15/2013	4	5.4	4.4	4.5
9/16/2013	2.5	3.8	5.1	4.3
9/17/2013	2	3.5	---	3.6
9/18/2013	3.2	5.6	5.2	4
9/19/2013	5.4	7.7	---	6.3
9/20/2013	4.4	6.3	---	4.4
9/21/2013	4.5	6.3	7.1	5.8
9/22/2013	3.5	9.6	7.6	No Data
9/23/2013	2.2	2.7	1.1	No Data
9/24/2013	---	2.8	0.4	---
9/25/2013	5.3	15.5	36	6
9/26/2013	6.2	7.8	7.8	5.6
9/27/2013	3.1	4.1	7.2	3
9/28/2013	---	1.5	---	---
9/29/2013	1.1	2.6	0.7	1.2
9/30/2013	2	3.8	0.7	2.4

**Note 1:** Please refer to Table 3 for the raw hourly data and treatment of valid and invalid values. All values in the above table are at actual conditions.

**Note 2:** Days marked 'No Data' are days for which there is no hourly data.

**Note 3:** Days marked (---) are days for which there is either more than 7 hours of negative data points or more than 12 hours of invalid data points.



# Table 3

## Hourly BAM Data, All Stations

Please note the following:

1. PM10 and PM2.5 are at actual conditions.
2. Hours for which there are no BAM data are marked "---"
3. Data marked with **bold red** text is invalid due to either an error code produced by the BAM or hourly wind speed > 25 mph or an out-of-range concentration.
4. Data marked with **bold green** text is valid. However, this data is highlighted since there was either a "warning" error code or hourly shelter temperature change exceeding the instrument tolerance.
5. Data marked with 'Cal' indicates that the BAM was undergoing calibration. This data is excluded from the 24-hour average calculations.



## DESERT SUNLIGHT SOLAR FARM

### TABLE 3 - HOURLY BAM DATA

(Please refer to Table 3 cover page for additional details.)

All values are in units of milligrams per cubic meter.

Date	Hour	North Station		East Station		South Station		West Station	
		PM10	PM2.5	PM10	PM2.5	PM10	PM2.5	PM10	PM2.5
9/1/2013	0	0.196	0.018	0.196	0.013	---	---	0.184	0.019
9/1/2013	1	0.181	0.017	0.135	0.011	---	---	0.187	0.017
9/1/2013	2	0.081	0.004	0.132	0.010	---	---	0.117	0.009
9/1/2013	3	0.091	0.007	0.124	0.012	---	---	0.073	0.010
9/1/2013	4	0.071	0.009	0.066	0.010	---	---	0.079	0.012
9/1/2013	5	0.129	0.009	0.051	0.007	---	---	0.131	0.012
9/1/2013	6	0.073	0.007	0.109	0.006	---	---	0.067	0.009
9/1/2013	7	0.059	0.006	0.084	0.008	---	---	0.070	0.006
9/1/2013	8	0.061	0.006	0.034	0.006	---	---	0.053	0.006
9/1/2013	9	0.050	0.006	0.074	0.004	---	---	0.040	0.005
9/1/2013	10	0.038	0.006	0.026	0.004	---	---	0.036	0.004
9/1/2013	11	0.041	0.003	0.038	0.001	---	---	0.037	0.006
9/1/2013	12	0.038	0.003	0.035	0.002	---	---	0.036	0.008
9/1/2013	13	0.033	0.003	0.035	0.001	---	---	0.030	0.007
9/1/2013	14	0.030	0.004	0.031	0.002	---	---	0.028	0.004
9/1/2013	15	0.038	0.005	0.042	0.003	---	---	0.035	0.005
9/1/2013	16	0.050	0.008	0.034	0.003	---	---	0.036	0.008
9/1/2013	17	0.079	0.009	0.030	0.002	---	---	0.034	0.007
9/1/2013	18	0.028	0.007	0.023	0.003	---	---	0.020	0.006
9/1/2013	19	0.015	0.005	0.024	0.004	---	---	0.011	0.006
9/1/2013	20	0.013	0.004	0.014	0.005	---	---	0.016	0.005
9/1/2013	21	0.013	0.002	0.011	0.006	---	---	0.010	0.004
9/1/2013	22	0.011	0.001	0.009	0.004	---	---	0.011	0.006
9/1/2013	23	0.008	0.000	0.010	0.003	---	---	0.017	0.005
9/2/2013	0	0.007	0.001	0.011	0.003	---	---	0.012	0.005
9/2/2013	1	0.007	0.002	0.009	0.003	---	---	0.010	0.004
9/2/2013	2	0.016	0.002	0.006	0.002	---	---	0.010	0.003
9/2/2013	3	0.014	0.004	0.017	0.002	---	---	0.016	0.006
9/2/2013	4	0.014	0.004	0.020	0.003	---	---	0.007	0.007
9/2/2013	5	0.014	0.004	0.014	0.006	---	---	0.010	0.005
9/2/2013	6	0.013	0.004	0.012	0.005	---	---	0.011	0.005
9/2/2013	7	0.009	0.003	0.010	0.004	---	---	0.006	0.005
9/2/2013	8	0.006	0.003	0.009	0.005	---	---	0.008	0.003
9/2/2013	9	0.017	0.004	0.007	0.002	---	---	0.008	0.004
9/2/2013	10	0.016	0.003	0.007	0.000	---	---	0.004	0.005
9/2/2013	11	0.011	0.003	0.005	0.000	---	---	0.006	0.004
9/2/2013	12	0.012	0.002	0.005	0.000	---	---	0.007	0.004
9/2/2013	13	0.012	0.000	0.008	0.000	---	---	0.024	0.004
9/2/2013	14	0.007	0.001	0.009	0.001	---	---	0.013	0.002
9/2/2013	15	0.006	0.003	0.008	0.000	---	---	0.011	0.005
9/2/2013	16	0.009	0.003	0.006	0.001	---	---	0.018	0.007
9/2/2013	17	0.008	0.000	0.006	0.005	---	---	0.034	0.005
9/2/2013	18	0.813	0.018	0.184	0.007	---	---	0.023	0.008
9/2/2013	19	0.260	0.009	0.985	0.101	---	---	0.985	0.048
9/2/2013	20	<b>0.985</b>	<b>0.244</b>	<b>0.985</b>	<b>0.129</b>	---	---	0.985	0.059
9/2/2013	21	0.480	0.022	0.268	0.021	---	---	0.257	0.021
9/2/2013	22	0.048	0.004	0.036	0.005	---	---	0.040	0.007
9/2/2013	23	0.026	0.004	0.024	0.004	---	---	0.034	0.006



## DESERT SUNLIGHT SOLAR FARM

### TABLE 3 - HOURLY BAM DATA

(Please refer to Table 3 cover page for additional details.)

All values are in units of milligrams per cubic meter.

Date	Hour	North Station		East Station		South Station		West Station	
		PM10	PM2.5	PM10	PM2.5	PM10	PM2.5	PM10	PM2.5
9/3/2013	0	0.022	0.005	0.044	0.006	---	---	0.026	0.007
9/3/2013	1	0.040	0.006	0.062	0.007	---	---	0.022	0.009
9/3/2013	2	0.040	0.009	0.043	0.004	---	---	0.022	0.009
9/3/2013	3	0.028	0.006	0.032	0.004	---	---	0.029	0.010
9/3/2013	4	0.031	0.004	0.030	0.004	---	---	0.029	0.009
9/3/2013	5	0.020	0.005	0.028	0.003	---	---	0.019	0.007
9/3/2013	6	0.017	0.003	0.019	0.003	---	---	0.019	0.007
9/3/2013	7	0.027	0.005	0.021	0.003	---	---	0.015	0.006
9/3/2013	8	0.014	0.006	0.019	0.003	---	---	0.021	0.005
9/3/2013	9	0.015	0.003	0.015	0.006	---	---	0.023	0.005
9/3/2013	10	0.010	0.002	-0.015	0.005	---	---	0.015	0.007
9/3/2013	11	0.011	0.003	0.008	0.002	---	---	0.011	0.005
9/3/2013	12	0.011	0.004	0.006	0.001	---	---	0.009	0.004
9/3/2013	13	0.008	0.001	0.003	0.001	---	---	0.006	0.005
9/3/2013	14	0.009	0.000	0.002	0.003	---	---	0.006	0.004
9/3/2013	15	0.008	0.003	0.002	0.002	---	---	0.005	0.004
9/3/2013	16	0.005	0.002	0.004	0.004	---	---	0.004	0.004
9/3/2013	17	0.004	-0.001	0.003	0.003	---	---	0.016	0.003
9/3/2013	18	0.003	-0.001	0.005	0.004	---	---	0.003	0.004
9/3/2013	19	0.004	0.002	0.006	0.005	---	---	0.006	0.004
9/3/2013	20	0.005	0.000	0.003	0.001	---	---	0.007	0.005
9/3/2013	21	0.008	-0.001	0.015	0.003	---	---	0.010	0.006
9/3/2013	22	0.017	0.003	0.018	0.005	---	---	0.013	0.005
9/3/2013	23	0.014	0.003	0.018	0.005	---	---	0.010	0.005
9/4/2013	0	0.017	0.004	0.013	0.006	---	---	0.007	0.004
9/4/2013	1	0.014	0.004	0.011	0.006	---	---	0.010	0.003
9/4/2013	2	0.016	0.003	0.016	0.004	---	---	0.018	0.005
9/4/2013	3	0.014	0.006	0.017	0.003	---	---	0.011	0.004
9/4/2013	4	0.013	0.006	0.022	0.002	---	---	0.015	0.002
9/4/2013	5	0.013	0.004	0.017	0.004	---	---	0.014	0.004
9/4/2013	6	0.013	0.007	0.016	0.008	---	---	0.017	0.005
9/4/2013	7	0.018	0.009	0.016	0.009	---	---	0.011	0.006
9/4/2013	8	0.025	0.006	0.024	0.005	---	---	0.012	0.007
9/4/2013	9	0.029	0.004	0.022	0.006	---	---	0.016	0.007
9/4/2013	10	0.015	0.003	0.016	0.007	---	---	0.016	0.005
9/4/2013	11	0.014	0.005	0.013	0.006	---	---	0.013	0.003
9/4/2013	12	<b>0.985</b>	<b>0.325</b>	0.422	0.027	---	---	0.824	0.035
9/4/2013	13	0.655	0.038	0.402	0.027	---	---	0.072	0.009
9/4/2013	14	0.028	0.007	0.037	0.007	---	---	0.017	0.010
9/4/2013	15	0.010	0.006	0.017	0.006	---	---	0.005	0.007
9/4/2013	16	0.007	0.001	0.000	0.005	---	---	0.006	0.003
9/4/2013	17	0.005	-0.003	0.002	0.002	---	---	0.006	0.003
9/4/2013	18	0.005	-0.003	0.003	0.000	---	---	0.005	0.002
9/4/2013	19	0.004	0.001	0.001	0.001	---	---	0.002	0.002
9/4/2013	20	0.003	0.004	0.003	0.000	---	---	0.001	0.003
9/4/2013	21	0.002	0.001	0.004	0.000	---	---	0.000	0.003
9/4/2013	22	0.005	0.000	0.002	-0.001	---	---	0.000	0.003
9/4/2013	23	0.006	0.000	0.002	0.000	---	---	0.001	0.002





## DESERT SUNLIGHT SOLAR FARM

### TABLE 3 - HOURLY BAM DATA

(Please refer to Table 3 cover page for additional details.)

All values are in units of milligrams per cubic meter.

Date	Hour	North Station		East Station		South Station		West Station	
		PM10	PM2.5	PM10	PM2.5	PM10	PM2.5	PM10	PM2.5
9/5/2013	0	0.006	-0.001	0.003	0.003	---	---	0.003	0.005
9/5/2013	1	0.005	0.000	0.003	0.002	---	---	0.007	0.006
9/5/2013	2	0.003	0.003	0.005	0.000	---	---	0.006	0.004
9/5/2013	3	0.003	0.004	0.007	0.002	---	---	0.003	0.004
9/5/2013	4	0.005	0.004	0.007	0.002	---	---	0.003	0.005
9/5/2013	5	0.005	0.003	0.007	0.002	---	---	0.005	0.006
9/5/2013	6	0.006	0.003	0.004	0.001	---	---	0.006	0.005
9/5/2013	7	0.006	0.004	0.005	0.003	---	---	0.005	0.003
9/5/2013	8	0.006	0.003	0.007	0.002	---	---	0.004	0.001
9/5/2013	9	0.006	0.000	0.006	-0.002	---	---	0.001	0.001
9/5/2013	10	0.004	0.001	0.007	-0.004	---	---	0.002	0.003
9/5/2013	11	0.008	0.005	0.011	0.015	---	---	0.016	0.004
9/5/2013	12	0.012	0.005	0.014	0.003	---	---	0.012	0.005
9/5/2013	13	0.014	0.004	0.019	0.002	---	---	0.011	0.006
9/5/2013	14	0.025	0.003	0.014	0.000	---	---	0.013	0.008
9/5/2013	15	0.013	0.005	0.012	0.001	---	---	0.011	0.006
9/5/2013	16	0.017	0.005	0.012	0.003	---	---	0.006	0.003
9/5/2013	17	0.007	0.003	0.014	0.004	---	---	0.029	0.004
9/5/2013	18	0.017	0.003	0.013	0.004	---	---	0.008	0.004
9/5/2013	19	0.008	0.004	0.010	0.003	---	---	0.006	0.004
9/5/2013	20	0.011	0.003	0.011	0.003	---	---	0.007	0.006
9/5/2013	21	0.012	0.004	0.013	0.004	---	---	0.009	0.007
9/5/2013	22	0.009	0.005	0.010	0.005	---	---	0.008	0.005
9/5/2013	23	0.010	0.004	0.010	0.004	---	---	0.009	0.005
9/6/2013	0	0.011	0.005	0.010	0.004	---	---	0.009	0.004
9/6/2013	1	0.011	0.005	0.010	0.003	---	---	0.009	0.004
9/6/2013	2	0.009	0.005	0.010	0.005	---	---	0.008	0.006
9/6/2013	3	0.009	0.005	0.009	0.007	---	---	0.010	0.007
9/6/2013	4	0.011	0.005	0.010	0.005	---	---	0.012	0.006
9/6/2013	5	0.019	0.005	0.009	0.004	---	---	0.012	0.008
9/6/2013	6	0.017	0.005	0.016	0.005	---	---	0.010	0.007
9/6/2013	7	0.012	0.006	0.018	0.007	---	---	---	---
9/6/2013	8	0.025	0.005	0.015	0.008	---	---	---	---
9/6/2013	9	0.106	0.003	0.028	0.005	---	---	0.985	0.985
9/6/2013	10	0.051	0.004	0.026	0.002	---	---	0.003	-0.005
9/6/2013	11	0.038	0.003	0.015	0.003	Cal	Cal	0.007	0.000
9/6/2013	12	0.026	0.004	0.010	0.000	Cal	Cal	0.016	0.006
9/6/2013	13	0.010	0.003	0.011	-0.002	Cal	Cal	0.010	0.006
9/6/2013	14	0.017	0.000	0.014	0.003	Cal	Cal	0.011	0.006
9/6/2013	15	0.017	0.003	0.020	0.006	Cal	Cal	0.020	0.007
9/6/2013	16	0.017	0.003	0.026	0.007	Cal	Cal	0.013	0.006
9/6/2013	17	0.533	0.031	0.985	0.265	Cal	Cal	0.056	0.005
9/6/2013	18	0.021	0.000	0.087	0.010	Cal	Cal	0.024	0.006
9/6/2013	19	0.169	0.000	0.142	0.008	Cal	Cal	0.024	0.005
9/6/2013	20	0.010	0.002	0.025	0.005	Cal	Cal	0.015	0.004
9/6/2013	21	0.985	0.017	0.985	0.098	Cal	Cal	0.985	0.054
9/6/2013	22	0.985	0.119	0.985	0.090	Cal	Cal	0.901	0.070
9/6/2013	23	0.098	0.007	0.073	0.009	Cal	Cal	0.072	0.010



**DESERT SUNLIGHT SOLAR FARM**

**TABLE 3 - HOURLY BAM DATA**

(Please refer to Table 3 cover page for additional details.)

All values are in units of milligrams per cubic meter.

Date	Hour	North Station		East Station		South Station		West Station	
		PM10	PM2.5	PM10	PM2.5	PM10	PM2.5	PM10	PM2.5
9/7/2013	0	0.062	0.006	0.050	0.009	Cal	Cal	0.041	0.009
9/7/2013	1	0.020	0.003	0.021	0.005	Cal	Cal	0.018	0.008
9/7/2013	2	0.012	0.002	0.018	0.004	Cal	Cal	0.004	0.006
9/7/2013	3	0.012	0.003	0.010	0.006	Cal	Cal	0.006	0.003
9/7/2013	4	0.008	0.001	0.010	0.006	Cal	Cal	0.005	0.002
9/7/2013	5	0.004	-0.001	0.009	0.003	Cal	Cal	0.002	0.004
9/7/2013	6	0.007	0.000	0.008	0.000	Cal	Cal	0.003	0.005
9/7/2013	7	0.008	0.001	0.007	0.003	Cal	Cal	0.004	0.004
9/7/2013	8	0.009	0.001	0.010	0.005	Cal	Cal	0.007	0.005
9/7/2013	9	0.010	0.003	0.013	0.003	Cal	Cal	0.010	0.005
9/7/2013	10	0.011	0.004	0.013	0.001	Cal	Cal	0.013	0.006
9/7/2013	11	0.012	0.003	0.017	0.002	Cal	Cal	0.050	0.006
9/7/2013	12	0.018	0.004	0.020	0.006	Cal	Cal	0.019	0.006
9/7/2013	13	0.021	0.004	0.022	0.006	Cal	Cal	0.021	0.006
9/7/2013	14	0.016	0.000	0.161	0.003	Cal	Cal	0.013	0.005
9/7/2013	15	0.022	0.002	0.020	0.002	Cal	Cal	0.018	0.005
9/7/2013	16	0.015	0.018	0.012	0.002	Cal	Cal	0.019	0.006
9/7/2013	17	0.019	0.004	0.985	0.047	Cal	Cal	0.021	0.007
9/7/2013	18	0.024	0.004	0.033	0.006	Cal	Cal	0.024	0.007
9/7/2013	19	0.015	0.004	0.019	0.005	Cal	Cal	0.013	0.008
9/7/2013	20	0.011	0.004	0.010	0.003	Cal	Cal	0.010	0.010
9/7/2013	21	0.008	0.005	0.011	0.004	Cal	Cal	0.009	0.008
9/7/2013	22	0.010	0.005	0.011	0.005	Cal	Cal	0.010	0.006
9/7/2013	23	0.008	0.004	0.012	0.003	Cal	Cal	0.008	0.007
9/8/2013	0	0.009	0.002	0.012	0.002	Cal	Cal	0.009	0.007
9/8/2013	1	0.012	0.005	0.012	0.004	Cal	Cal	0.010	0.009
9/8/2013	2	0.010	0.006	0.012	0.007	Cal	Cal	0.008	0.010
9/8/2013	3	0.010	0.004	0.009	0.007	Cal	Cal	0.010	0.009
9/8/2013	4	0.012	0.006	0.009	0.004	Cal	Cal	0.010	0.006
9/8/2013	5	0.017	0.007	0.019	0.003	Cal	Cal	0.011	0.006
9/8/2013	6	0.019	0.006	0.020	0.005	Cal	Cal	0.020	0.008
9/8/2013	7	0.020	0.008	0.025	0.006	Cal	Cal	0.024	0.009
9/8/2013	8	0.020	0.010	0.023	0.005	Cal	Cal	0.025	0.008
9/8/2013	9	0.019	0.006	0.017	0.003	Cal	Cal	0.020	0.005
9/8/2013	10	0.016	0.005	0.011	0.001	Cal	Cal	0.021	0.004
9/8/2013	11	0.013	0.004	0.011	-0.001	Cal	Cal	0.013	0.005
9/8/2013	12	0.013	0.000	0.011	0.001	Cal	Cal	0.016	0.005
9/8/2013	13	0.011	0.000	0.011	0.004	Cal	Cal	0.011	0.006
9/8/2013	14	0.028	0.002	0.024	0.004	Cal	Cal	0.012	0.003
9/8/2013	15	0.125	0.001	0.162	0.004	Cal	Cal	0.013	0.001
9/8/2013	16	0.243	0.001	0.751	0.020	Cal	Cal	0.012	0.004
9/8/2013	17	0.006	0.000	0.006	0.000	Cal	Cal	0.008	0.004
9/8/2013	18	0.006	-0.001	0.008	0.001	Cal	Cal	0.006	0.004
9/8/2013	19	0.005	0.001	0.008	0.002	Cal	Cal	0.007	0.006
9/8/2013	20	0.006	0.003	0.007	0.004	Cal	Cal	0.007	0.005
9/8/2013	21	0.007	0.005	0.008	0.004	Cal	Cal	0.007	0.004
9/8/2013	22	0.007	0.005	0.008	0.003	Cal	Cal	0.006	0.002
9/8/2013	23	0.010	0.003	0.010	0.003	Cal	Cal	0.007	0.001



## DESERT SUNLIGHT SOLAR FARM

### TABLE 3 - HOURLY BAM DATA

(Please refer to Table 3 cover page for additional details.)

All values are in units of milligrams per cubic meter.

Date	Hour	North Station		East Station		South Station		West Station	
		PM10	PM2.5	PM10	PM2.5	PM10	PM2.5	PM10	PM2.5
9/9/2013	0	0.011	0.004	0.012	0.003	Cal	Cal	0.009	0.002
9/9/2013	1	0.008	0.001	0.011	0.003	Cal	Cal	0.009	0.002
9/9/2013	2	0.008	0.001	0.010	0.003	Cal	Cal	0.011	0.003
9/9/2013	3	0.008	0.005	0.009	0.002	Cal	Cal	0.011	0.003
9/9/2013	4	0.007	0.005	0.009	0.002	Cal	Cal	0.008	0.003
9/9/2013	5	0.006	0.004	0.010	0.002	Cal	Cal	0.008	0.006
9/9/2013	6	0.006	0.003	0.007	0.001	Cal	Cal	0.008	0.007
9/9/2013	7	0.011	0.003	0.021	0.002	Cal	Cal	0.010	0.005
9/9/2013	8	0.009	0.003	0.016	0.006	Cal	Cal	0.011	0.004
9/9/2013	9	0.020	0.003	0.014	0.008	Cal	Cal	0.011	0.003
9/9/2013	10	0.022	0.004	<b>0.985</b>	<b>0.985</b>	Cal	Cal	0.022	0.002
9/9/2013	11	0.008	0.005	<b>0.985</b>	<b>0.985</b>	Cal	Cal	0.013	0.004
9/9/2013	12	0.022	0.002	0.022	0.005	Cal	Cal	0.021	0.006
9/9/2013	13	0.021	0.002	0.019	0.004	Cal	Cal	0.018	0.004
9/9/2013	14	0.025	0.003	0.018	0.005	Cal	Cal	0.017	0.003
9/9/2013	15	0.019	0.002	0.021	0.002	Cal	Cal	0.019	0.005
9/9/2013	16	0.073	0.001	0.019	0.002	Cal	Cal	0.027	0.005
9/9/2013	17	0.017	0.002	0.020	0.004	Cal	Cal	0.017	0.005
9/9/2013	18	0.027	0.003	0.138	0.005	Cal	Cal	0.032	0.007
9/9/2013	19	0.163	0.005	0.134	0.008	Cal	Cal	0.103	0.007
9/9/2013	20	0.020	0.004	0.012	0.007	Cal	Cal	0.019	0.006
9/9/2013	21	0.008	0.000	0.011	0.005	Cal	Cal	0.009	0.005
9/9/2013	22	0.010	0.002	0.009	0.005	Cal	Cal	0.008	0.006
9/9/2013	23	0.009	0.001	0.007	0.004	Cal	Cal	0.009	0.006
9/10/2013	0	0.007	0.000	0.005	0.003	Cal	Cal	0.007	0.003
9/10/2013	1	0.008	0.004	0.006	0.004	Cal	Cal	0.006	0.003
9/10/2013	2	0.008	0.003	0.007	0.004	Cal	Cal	0.003	0.004
9/10/2013	3	0.006	0.000	0.004	0.004	Cal	Cal	0.002	0.005
9/10/2013	4	0.005	0.003	0.004	0.003	Cal	Cal	0.006	0.005
9/10/2013	5	0.006	0.004	0.006	0.003	Cal	Cal	0.004	0.005
9/10/2013	6	0.008	0.004	0.008	0.003	Cal	Cal	0.003	0.005
9/10/2013	7	0.006	0.004	0.007	0.004	Cal	Cal	0.004	0.005
9/10/2013	8	0.007	0.005	0.002	0.006	Cal	Cal	0.006	0.005
9/10/2013	9	0.008	0.005	0.004	0.005	Cal	Cal	0.007	0.006
9/10/2013	10	0.006	0.006	0.007	0.003	Cal	Cal	0.010	0.007
9/10/2013	11	0.006	0.006	0.008	0.004	Cal	Cal	0.012	0.005
9/10/2013	12	0.007	0.005	0.003	0.003	Cal	Cal	0.009	0.004
9/10/2013	13	0.006	0.004	0.000	0.002	Cal	Cal	0.007	0.004
9/10/2013	14	0.003	0.004	0.004	0.002	Cal	Cal	0.005	0.004
9/10/2013	15	0.002	0.001	0.005	0.002	Cal	Cal	0.003	0.004
9/10/2013	16	0.003	0.002	0.003	0.002	Cal	Cal	0.001	0.004
9/10/2013	17	0.003	0.003	0.001	0.000	Cal	Cal	0.004	0.003
9/10/2013	18	0.003	0.002	0.002	0.002	Cal	Cal	0.005	0.004
9/10/2013	19	0.003	0.001	0.004	0.007	Cal	Cal	0.004	0.003
9/10/2013	20	0.005	0.001	0.008	0.006	Cal	Cal	0.005	0.004
9/10/2013	21	0.005	0.001	0.008	0.005	Cal	Cal	0.006	0.005
9/10/2013	22	0.004	0.001	0.006	0.009	Cal	Cal	0.005	0.003
9/10/2013	23	0.007	0.003	0.008	0.010	Cal	Cal	0.004	0.002



## DESERT SUNLIGHT SOLAR FARM

### TABLE 3 - HOURLY BAM DATA

(Please refer to Table 3 cover page for additional details.)

All values are in units of milligrams per cubic meter.

Date	Hour	North Station		East Station		South Station		West Station	
		PM10	PM2.5	PM10	PM2.5	PM10	PM2.5	PM10	PM2.5
9/11/2013	0	0.007	0.003	0.006	0.006	Cal	Cal	0.003	0.003
9/11/2013	1	0.006	0.002	0.004	0.002	Cal	Cal	0.004	0.005
9/11/2013	2	0.007	0.001	-0.006	0.002	Cal	Cal	0.004	0.006
9/11/2013	3	0.004	0.001	-0.005	0.002	Cal	Cal	0.006	0.005
9/11/2013	4	0.003	0.002	0.005	0.003	Cal	Cal	0.004	0.003
9/11/2013	5	0.004	0.003	0.006	0.004	Cal	Cal	---	---
9/11/2013	6	0.006	0.003	0.021	0.004	Cal	Cal	---	---
9/11/2013	7	0.009	0.002	0.020	0.005	Cal	Cal	---	---
9/11/2013	8	0.008	0.005	0.010	0.002	Cal	Cal	0.985	0.985
9/11/2013	9	0.009	0.005	0.018	0.001	Cal	Cal	0.364	-0.010
9/11/2013	10	0.013	0.000	0.009	0.004	Cal	Cal	0.010	-0.008
9/11/2013	11	0.019	0.000	0.011	0.005	Cal	Cal	0.018	-0.005
9/11/2013	12	0.013	0.004	0.015	0.006	Cal	Cal	0.008	-0.002
9/11/2013	13	0.011	0.006	0.012	0.004	Cal	Cal	0.018	0.003
9/11/2013	14	0.011	0.003	0.012	0.001	Cal	Cal	0.017	0.003
9/11/2013	15	0.016	0.003	0.010	0.002	Cal	Cal	0.013	0.004
9/11/2013	16	0.008	0.003	0.010	0.003	Cal	Cal	0.011	0.002
9/11/2013	17	0.008	0.002	0.007	0.002	Cal	Cal	0.005	0.002
9/11/2013	18	0.006	0.000	0.003	0.001	Cal	Cal	0.018	0.003
9/11/2013	19	0.003	-0.001	0.002	0.002	Cal	Cal	0.001	0.004
9/11/2013	20	0.005	-0.001	0.004	0.004	Cal	Cal	0.003	0.006
9/11/2013	21	0.007	-0.001	0.007	0.004	Cal	Cal	0.005	0.005
9/11/2013	22	0.007	0.001	0.008	0.003	Cal	Cal	0.008	0.985
9/11/2013	23	0.009	0.004	0.009	0.005	Cal	Cal	0.018	0.985
9/12/2013	0	0.022	0.004	0.012	0.005	Cal	Cal	0.007	0.985
9/12/2013	1	0.013	0.004	0.012	0.003	Cal	Cal	0.008	0.985
9/12/2013	2	0.013	0.008	0.010	0.002	Cal	Cal	0.008	0.985
9/12/2013	3	0.014	0.008	0.011	0.006	Cal	Cal	0.009	0.985
9/12/2013	4	0.019	0.004	0.013	0.006	Cal	Cal	0.012	0.985
9/12/2013	5	0.018	0.003	0.012	0.001	Cal	Cal	0.015	0.985
9/12/2013	6	0.013	0.004	0.017	0.002	Cal	Cal	0.015	0.985
9/12/2013	7	0.012	0.005	0.019	0.003	Cal	Cal	0.017	0.985
9/12/2013	8	0.012	0.004	0.015	0.002	Cal	Cal	0.014	0.985
9/12/2013	9	0.016	0.003	0.020	0.003	Cal	Cal	0.012	0.985
9/12/2013	10	0.014	0.004	0.015	0.003	Cal	Cal	0.007	0.985
9/12/2013	11	0.012	0.004	0.009	0.003	Cal	Cal	0.023	0.985
9/12/2013	12	0.009	0.002	0.011	0.003	Cal	Cal	0.009	0.985
9/12/2013	13	0.011	0.003	0.010	0.002	Cal	Cal	0.021	0.985
9/12/2013	14	0.059	0.003	0.010	0.001	Cal	Cal	0.008	0.985
9/12/2013	15	0.010	0.004	0.009	0.001	Cal	0.985	0.009	0.005
9/12/2013	16	0.011	0.005	0.008	0.002	Cal	0.006	0.009	0.005
9/12/2013	17	0.011	0.004	0.009	0.002	Cal	0.005	0.009	0.005
9/12/2013	18	0.011	0.007	0.010	0.004	Cal	0.006	0.010	0.005
9/12/2013	19	0.011	0.008	0.010	0.007	Cal	0.006	0.011	0.004
9/12/2013	20	0.011	0.006	0.010	0.004	Cal	0.005	0.012	0.005
9/12/2013	21	0.013	0.007	0.012	0.002	Cal	0.006	0.012	0.007
9/12/2013	22	0.013	0.008	0.012	0.006	Cal	0.006	0.013	0.007
9/12/2013	23	0.012	0.009	0.011	0.006	Cal	0.004	0.019	0.005



## DESERT SUNLIGHT SOLAR FARM

### TABLE 3 - HOURLY BAM DATA

(Please refer to Table 3 cover page for additional details.)

All values are in units of milligrams per cubic meter.

Date	Hour	North Station		East Station		South Station		West Station	
		PM10	PM2.5	PM10	PM2.5	PM10	PM2.5	PM10	PM2.5
9/13/2013	0	0.013	0.005	0.016	0.006	Cal	0.005	0.006	0.005
9/13/2013	1	0.012	0.005	0.012	0.006	Cal	0.005	0.009	0.006
9/13/2013	2	0.011	0.006	0.011	0.006	Cal	0.005	0.011	0.003
9/13/2013	3	0.015	0.005	0.012	0.005	Cal	0.006	0.009	0.002
9/13/2013	4	0.015	0.005	0.019	0.007	Cal	0.004	0.018	0.005
9/13/2013	5	0.015	0.007	0.018	0.008	Cal	0.006	0.010	0.006
9/13/2013	6	0.018	0.008	0.020	0.009	Cal	0.009	0.015	0.007
9/13/2013	7	0.021	0.006	0.017	0.009	Cal	0.008	0.015	0.008
9/13/2013	8	0.016	0.007	0.017	0.005	Cal	0.009	0.019	0.007
9/13/2013	9	0.985	0.985	0.019	0.006	Cal	0.007	0.014	0.006
9/13/2013	10	0.013	0.985	0.016	0.006	Cal	0.007	0.013	0.006
9/13/2013	11	0.013	0.007	0.014	0.985	Cal	0.009	0.011	0.004
9/13/2013	12	0.012	0.006	0.009	0.000	Cal	0.004	0.010	0.002
9/13/2013	13	0.008	0.003	0.007	0.001	Cal	0.003	0.011	0.001
9/13/2013	14	0.005	0.002	0.010	0.002	Cal	0.006	0.010	0.003
9/13/2013	15	0.006	0.004	0.011	0.001	Cal	0.004	0.010	0.002
9/13/2013	16	0.009	0.002	0.012	0.003	Cal	0.004	0.011	0.002
9/13/2013	17	0.010	-0.001	0.010	0.003	Cal	0.004	0.011	0.003
9/13/2013	18	0.009	0.001	0.011	0.004	Cal	0.005	0.010	0.003
9/13/2013	19	0.010	0.004	0.018	0.007	Cal	0.006	0.012	0.004
9/13/2013	20	0.011	0.003	0.015	0.007	Cal	0.006	0.013	0.005
9/13/2013	21	0.009	0.005	0.014	0.005	Cal	0.007	0.011	0.003
9/13/2013	22	0.008	0.004	0.013	0.007	Cal	0.007	0.011	0.004
9/13/2013	23	0.011	0.003	0.011	0.009	Cal	0.003	0.010	0.005
9/14/2013	0	0.011	0.005	0.013	0.006	Cal	0.003	0.010	0.004
9/14/2013	1	0.012	0.005	0.013	0.005	Cal	0.007	0.012	0.004
9/14/2013	2	0.013	0.004	0.011	0.006	Cal	0.006	0.011	0.007
9/14/2013	3	0.013	0.005	0.011	0.005	Cal	0.003	0.011	0.007
9/14/2013	4	0.017	0.006	0.012	0.004	Cal	0.004	0.012	0.003
9/14/2013	5	0.017	0.006	0.012	0.005	Cal	0.007	0.018	0.005
9/14/2013	6	0.017	0.007	0.025	0.008	Cal	0.006	0.011	0.006
9/14/2013	7	0.020	0.010	0.029	0.009	Cal	0.006	0.021	0.007
9/14/2013	8	0.029	0.010	0.031	0.009	Cal	0.008	0.018	0.006
9/14/2013	9	0.025	0.008	0.023	0.008	Cal	0.006	0.020	0.005
9/14/2013	10	0.021	0.005	0.020	0.009	Cal	0.006	0.018	0.007
9/14/2013	11	0.024	0.005	0.017	0.007	Cal	0.007	0.024	0.006
9/14/2013	12	0.018	0.006	0.017	0.005	Cal	0.007	0.021	0.007
9/14/2013	13	0.014	0.005	0.020	0.005	Cal	0.005	0.017	0.006
9/14/2013	14	0.011	0.006	0.009	0.004	Cal	0.003	0.013	0.008
9/14/2013	15	0.011	0.005	0.010	0.004	Cal	0.004	0.018	0.008
9/14/2013	16	0.012	0.003	0.017	0.005	Cal	0.005	0.014	0.004
9/14/2013	17	0.009	0.002	0.013	0.006	Cal	0.005	0.009	0.002
9/14/2013	18	0.011	0.004	0.011	0.007	Cal	0.005	0.006	0.001
9/14/2013	19	0.013	0.005	0.009	0.004	Cal	0.003	0.011	0.005
9/14/2013	20	0.008	0.005	0.011	0.003	Cal	0.003	0.016	0.007
9/14/2013	21	0.009	0.004	0.016	0.006	Cal	0.006	0.015	0.005
9/14/2013	22	0.012	0.004	0.011	0.005	Cal	0.005	0.011	0.004
9/14/2013	23	0.010	0.006	0.015	0.006	Cal	0.004	0.009	0.006



## DESERT SUNLIGHT SOLAR FARM

### TABLE 3 - HOURLY BAM DATA

(Please refer to Table 3 cover page for additional details.)

All values are in units of milligrams per cubic meter.

Date	Hour	North Station		East Station		South Station		West Station	
		PM10	PM2.5	PM10	PM2.5	PM10	PM2.5	PM10	PM2.5
9/15/2013	0	0.010	0.005	0.014	0.009	Cal	0.002	0.010	0.007
9/15/2013	1	0.012	0.006	0.017	0.009	Cal	0.003	0.011	0.005
9/15/2013	2	0.013	0.005	0.013	0.007	Cal	0.006	0.012	0.005
9/15/2013	3	0.013	0.001	0.014	0.004	Cal	0.006	0.016	0.006
9/15/2013	4	0.013	0.003	0.014	0.006	Cal	0.003	0.017	0.006
9/15/2013	5	0.011	0.006	0.015	0.007	Cal	0.005	0.011	0.005
9/15/2013	6	0.015	0.005	0.013	0.006	Cal	0.006	0.012	0.006
9/15/2013	7	0.015	0.008	0.013	0.008	Cal	0.007	0.013	0.007
9/15/2013	8	0.018	0.008	0.015	0.006	Cal	0.007	0.014	0.006
9/15/2013	9	0.012	0.004	0.012	0.006	Cal	0.006	0.020	0.006
9/15/2013	10	0.021	0.006	0.017	0.008	Cal	0.005	0.016	0.004
9/15/2013	11	0.013	0.005	0.012	0.007	Cal	0.006	0.012	0.002
9/15/2013	12	0.010	0.001	0.013	0.004	Cal	0.005	0.012	0.004
9/15/2013	13	0.021	0.001	0.015	0.003	Cal	0.004	0.012	0.006
9/15/2013	14	0.010	0.003	0.013	0.004	Cal	0.005	0.011	0.005
9/15/2013	15	0.011	0.003	0.009	0.004	Cal	0.003	0.011	0.004
9/15/2013	16	0.011	0.002	0.006	0.001	Cal	0.003	0.012	0.002
9/15/2013	17	0.009	0.004	0.007	0.001	Cal	0.005	0.009	0.001
9/15/2013	18	0.009	0.005	0.006	0.003	Cal	0.985	0.007	0.004
9/15/2013	19	0.011	0.003	0.009	0.002	Cal	0.002	0.009	0.005
9/15/2013	20	0.011	0.001	0.010	0.004	Cal	0.001	0.012	0.004
9/15/2013	21	0.012	0.001	0.010	0.007	Cal	0.004	0.011	0.003
9/15/2013	22	0.011	0.005	0.013	0.007	Cal	0.003	0.011	0.002
9/15/2013	23	0.009	0.006	0.014	0.006	Cal	0.004	0.010	0.003
9/16/2013	0	0.009	0.002	0.013	0.006	Cal	0.004	0.008	0.004
9/16/2013	1	0.010	0.003	0.010	0.003	Cal	0.004	0.011	0.003
9/16/2013	2	0.009	0.004	0.010	-0.001	Cal	0.004	0.012	0.005
9/16/2013	3	0.006	0.003	0.011	0.000	Cal	0.001	0.010	0.004
9/16/2013	4	0.009	0.005	0.012	0.003	Cal	0.002	0.012	0.003
9/16/2013	5	0.012	0.004	0.011	0.005	Cal	0.003	0.012	0.006
9/16/2013	6	0.011	0.005	0.011	0.007	Cal	0.004	0.010	0.006
9/16/2013	7	0.024	0.007	0.023	0.008	Cal	0.004	0.010	0.006
9/16/2013	8	0.016	0.006	0.028	0.006	Cal	0.005	0.010	0.007
9/16/2013	9	0.016	0.004	0.011	0.007	Cal	0.006	0.028	0.006
9/16/2013	10	0.017	0.003	-0.015	0.009	Cal	0.006	0.038	0.003
9/16/2013	11	0.023	0.003	0.012	0.006	Cal	0.007	0.015	0.002
9/16/2013	12	0.011	0.004	0.010	0.001	Cal	0.010	0.008	0.004
9/16/2013	13	0.008	0.001	0.008	0.002	Cal	0.012	0.019	0.007
9/16/2013	14	0.007	-0.002	0.007	0.003	Cal	0.985	0.003	0.006
9/16/2013	15	0.008	-0.001	0.004	0.001	Cal	0.985	0.006	0.004
9/16/2013	16	0.007	0.000	0.006	0.002	Cal	0.985	0.006	0.005
9/16/2013	17	0.006	-0.002	0.017	0.001	Cal	0.985	0.006	0.004
9/16/2013	18	0.005	0.001	0.009	0.001	Cal	0.985	0.007	0.002
9/16/2013	19	0.007	0.001	0.012	0.004	Cal	0.985	0.011	0.002
9/16/2013	20	0.008	0.002	0.017	0.005	Cal	0.985	0.013	0.003
9/16/2013	21	0.006	0.002	0.014	0.003	Cal	0.985	0.010	0.003
9/16/2013	22	0.006	0.002	0.012	0.004	Cal	0.985	0.008	0.004
9/16/2013	23	0.009	0.004	0.036	0.004	Cal	0.985	0.009	0.004



## DESERT SUNLIGHT SOLAR FARM

### TABLE 3 - HOURLY BAM DATA

(Please refer to Table 3 cover page for additional details.)

All values are in units of milligrams per cubic meter.

Date	Hour	North Station		East Station		South Station		West Station	
		PM10	PM2.5	PM10	PM2.5	PM10	PM2.5	PM10	PM2.5
9/17/2013	0	0.012	0.005	0.012	0.003	Cal	0.985	0.009	0.003
9/17/2013	1	0.008	0.005	0.013	0.004	Cal	0.985	0.007	0.003
9/17/2013	2	0.007	0.002	0.011	0.006	Cal	0.985	0.009	0.002
9/17/2013	3	0.008	0.000	0.012	0.005	Cal	0.985	0.011	0.005
9/17/2013	4	0.010	0.002	0.014	0.005	Cal	0.985	0.011	0.007
9/17/2013	5	0.017	0.005	0.016	0.007	Cal	0.985	0.012	0.006
9/17/2013	6	0.012	0.005	0.013	0.005	Cal	0.985	0.013	0.005
9/17/2013	7	0.019	0.003	0.021	0.006	Cal	0.985	0.015	0.004
9/17/2013	8	0.009	0.003	0.048	0.008	Cal	0.985	0.017	0.006
9/17/2013	9	0.011	0.005	0.021	0.004	Cal	0.985	0.017	0.005
9/17/2013	10	0.012	0.003	0.012	0.001	Cal	0.985	0.014	0.005
9/17/2013	11	0.012	0.003	0.012	0.001	Cal	0.985	0.014	0.005
9/17/2013	12	0.009	-0.001	0.010	0.001	Cal	0.985	0.010	0.001
9/17/2013	13	0.008	-0.002	0.011	0.000	Cal	0.985	0.019	0.001
9/17/2013	14	0.008	-0.004	0.043	-0.002	Cal	0.985	0.011	0.000
9/17/2013	15	0.137	-0.003	0.055	0.003	Cal	0.012	0.011	0.001
9/17/2013	16	0.064	0.004	0.017	0.003	Cal	0.012	0.009	0.002
9/17/2013	17	0.012	0.003	0.028	-0.001	Cal	0.011	0.008	0.000
9/17/2013	18	0.009	0.000	0.015	0.002	Cal	0.007	0.018	0.002
9/17/2013	19	0.015	0.002	0.022	0.004	Cal	-0.004	0.018	0.004
9/17/2013	20	0.029	0.004	0.025	0.003	Cal	-0.005	0.021	0.003
9/17/2013	21	0.022	0.003	0.024	0.004	Cal	0.001	0.015	0.004
9/17/2013	22	0.009	0.001	0.013	0.005	Cal	0.002	0.012	0.006
9/17/2013	23	0.010	0.002	0.012	0.005	Cal	0.004	0.020	0.006
9/18/2013	0	0.017	0.004	0.015	0.006	Cal	0.006	0.019	0.005
9/18/2013	1	0.009	0.006	0.015	0.004	Cal	0.004	0.009	0.006
9/18/2013	2	0.018	0.005	0.024	0.002	Cal	0.002	0.011	0.008
9/18/2013	3	0.033	0.005	0.035	0.004	Cal	0.006	0.024	0.005
9/18/2013	4	0.037	0.006	0.036	0.008	Cal	0.007	0.027	0.006
9/18/2013	5	0.040	0.009	0.037	0.009	Cal	0.006	0.031	0.006
9/18/2013	6	---	---	0.042	0.009	Cal	0.010	0.037	0.006
9/18/2013	7	---	---	0.053	0.009	Cal	0.008	---	---
9/18/2013	8	---	---	0.062	0.008	Cal	0.005	0.985	0.985
9/18/2013	9	0.985	0.985	0.060	0.009	Cal	0.005	0.040	-0.002
9/18/2013	10	0.036	0.000	0.045	0.007	Cal	0.009	0.033	-0.002
9/18/2013	11	0.030	-0.003	0.045	0.004	Cal	0.007	0.044	-0.001
9/18/2013	12	0.032	-0.001	0.040	0.002	Cal	0.004	0.035	0.003
9/18/2013	13	0.024	0.003	0.022	0.002	Cal	0.007	0.030	0.006
9/18/2013	14	0.027	0.002	0.021	0.005	Cal	0.006	0.018	0.003
9/18/2013	15	0.018	0.002	0.020	0.006	Cal	0.985	0.022	0.001
9/18/2013	16	0.018	0.002	0.017	0.006	Cal	0.985	0.021	0.003
9/18/2013	17	0.020	0.002	0.018	0.005	Cal	0.001	0.021	0.004
9/18/2013	18	0.020	0.001	0.020	0.003	Cal	0.001	0.019	0.004
9/18/2013	19	0.022	0.000	0.024	0.005	Cal	0.003	0.020	0.005
9/18/2013	20	0.024	0.002	0.031	0.005	Cal	0.006	0.025	0.005
9/18/2013	21	0.027	0.003	0.029	0.005	Cal	0.985	0.021	0.005
9/18/2013	22	0.032	0.006	0.024	0.004	Cal	0.004	0.017	0.006
9/18/2013	23	0.030	0.009	0.033	0.008	Cal	0.003	0.025	0.006



## DESERT SUNLIGHT SOLAR FARM

### TABLE 3 - HOURLY BAM DATA

(Please refer to Table 3 cover page for additional details.)

All values are in units of milligrams per cubic meter.

Date	Hour	North Station		East Station		South Station		West Station	
		PM10	PM2.5	PM10	PM2.5	PM10	PM2.5	PM10	PM2.5
9/19/2013	0	0.030	0.009	0.034	0.010	Cal	0.985	0.027	0.006
9/19/2013	1	0.033	0.007	0.036	0.008	Cal	0.985	0.027	0.008
9/19/2013	2	0.041	0.006	0.043	0.008	Cal	0.007	0.035	0.007
9/19/2013	3	0.043	0.007	0.050	0.009	Cal	0.010	0.041	0.007
9/19/2013	4	0.047	0.008	0.047	0.010	Cal	0.011	0.040	0.011
9/19/2013	5	0.045	0.011	0.048	0.017	Cal	0.016	0.041	0.012
9/19/2013	6	0.042	0.011	0.044	0.014	Cal	0.985	0.038	0.012
9/19/2013	7	0.041	0.009	0.048	0.013	Cal	0.985	0.037	0.009
9/19/2013	8	0.037	0.009	0.043	0.012	Cal	0.985	0.038	0.009
9/19/2013	9	0.036	0.007	0.040	0.010	Cal	0.985	0.036	0.008
9/19/2013	10	0.030	0.006	0.040	0.010	Cal	0.985	0.026	0.007
9/19/2013	11	0.026	0.006	0.041	0.007	Cal	0.985	0.029	0.007
9/19/2013	12	0.025	0.004	0.027	0.004	Cal	0.985	0.023	0.004
9/19/2013	13	0.020	0.002	0.025	0.003	Cal	0.985	0.019	0.006
9/19/2013	14	0.017	0.002	0.021	0.005	Cal	0.985	0.018	0.006
9/19/2013	15	0.018	0.004	0.018	0.006	Cal	0.985	0.016	0.004
9/19/2013	16	0.015	0.004	0.016	0.006	Cal	0.985	0.017	0.004
9/19/2013	17	0.017	0.001	0.016	0.004	Cal	0.985	0.013	0.003
9/19/2013	18	0.017	-0.001	0.012	0.002	Cal	0.985	0.011	0.003
9/19/2013	19	0.015	0.000	0.013	0.004	Cal	0.985	0.010	0.006
9/19/2013	20	0.013	0.003	0.012	0.004	Cal	0.985	0.012	0.006
9/19/2013	21	0.013	0.005	0.021	0.005	Cal	0.985	0.012	0.003
9/19/2013	22	0.013	0.004	0.024	0.007	Cal	0.985	0.012	0.000
9/19/2013	23	0.013	0.005	0.025	0.006	Cal	0.985	0.021	0.002
9/20/2013	0	0.016	0.004	0.025	0.006	Cal	0.985	0.016	0.006
9/20/2013	1	0.017	0.003	0.019	0.007	Cal	0.985	0.014	0.005
9/20/2013	2	0.017	0.002	0.021	0.006	Cal	0.985	0.014	0.003
9/20/2013	3	0.015	0.002	0.026	0.006	Cal	0.985	0.019	0.002
9/20/2013	4	0.018	0.004	0.021	0.007	Cal	0.985	0.019	0.004
9/20/2013	5	0.017	0.003	0.020	0.007	Cal	0.985	0.018	0.006
9/20/2013	6	0.016	0.004	0.017	0.005	Cal	0.985	0.020	0.005
9/20/2013	7	0.017	0.004	0.023	0.005	Cal	0.985	0.018	0.005
9/20/2013	8	0.021	0.005	0.031	0.007	Cal	0.985	0.020	0.005
9/20/2013	9	0.024	0.007	0.027	0.007	Cal	0.985	0.026	0.003
9/20/2013	10	0.020	0.009	0.019	0.005	Cal	0.985	0.016	0.001
9/20/2013	11	0.021	0.006	0.018	0.004	Cal	0.985	0.022	0.002
9/20/2013	12	0.019	0.002	0.466	0.004	Cal	0.985	0.026	0.003
9/20/2013	13	0.024	0.002	0.024	0.004	Cal	0.985	0.029	0.004
9/20/2013	14	0.030	0.004	0.022	0.004	Cal	-0.015	0.021	0.003
9/20/2013	15	0.031	0.004	0.022	0.007	Cal	0.010	0.020	0.002
9/20/2013	16	0.020	0.004	0.017	0.006	Cal	0.006	0.018	0.001
9/20/2013	17	0.021	0.004	0.021	0.003	Cal	0.005	0.019	0.004
9/20/2013	18	0.023	0.004	0.026	0.005	Cal	0.008	0.020	0.007
9/20/2013	19	0.024	0.006	0.027	0.006	Cal	0.024	0.021	0.006
9/20/2013	20	0.021	0.006	0.023	0.008	Cal	0.023	0.018	0.006
9/20/2013	21	0.020	0.005	0.024	0.009	Cal	0.005	0.016	0.005
9/20/2013	22	0.028	0.005	0.027	0.008	Cal	0.006	0.027	0.008
9/20/2013	23	0.038	0.006	0.041	0.015	Cal	0.010	0.035	0.009





## DESERT SUNLIGHT SOLAR FARM

### TABLE 3 - HOURLY BAM DATA

(Please refer to Table 3 cover page for additional details.)

All values are in units of milligrams per cubic meter.

Date	Hour	North Station		East Station		South Station		West Station	
		PM10	PM2.5	PM10	PM2.5	PM10	PM2.5	PM10	PM2.5
9/21/2013	0	0.031	0.008	0.037	0.006	Cal	0.009	0.038	0.009
9/21/2013	1	0.037	0.008	0.036	0.008	Cal	0.006	0.038	0.012
9/21/2013	2	0.036	0.009	0.040	0.011	Cal	0.006	0.034	0.010
9/21/2013	3	0.043	0.010	0.040	0.012	Cal	0.006	0.037	0.009
9/21/2013	4	0.035	0.009	0.031	0.011	Cal	0.009	0.024	0.010
9/21/2013	5	0.027	0.008	0.030	0.009	Cal	0.011	0.026	0.009
9/21/2013	6	0.024	0.008	0.024	0.009	Cal	0.008	0.023	0.007
9/21/2013	7	0.032	0.008	0.027	0.010	Cal	0.007	0.029	0.007
9/21/2013	8	0.025	0.006	0.021	0.007	Cal	0.008	0.022	0.007
9/21/2013	9	0.022	0.004	0.015	0.004	Cal	0.007	0.021	0.007
9/21/2013	10	0.017	0.004	0.014	0.005	Cal	0.008	0.016	0.007
9/21/2013	11	0.017	0.003	0.018	0.006	Cal	0.021	0.022	0.004
9/21/2013	12	0.015	0.003	0.016	0.007	Cal	0.004	0.015	0.004
9/21/2013	13	0.011	0.002	0.014	0.006	Cal	0.007	0.012	0.005
9/21/2013	14	0.011	0.002	0.014	0.004	Cal	0.012	0.018	0.002
9/21/2013	15	0.008	0.000	0.010	0.002	Cal	0.009	0.007	0.000
9/21/2013	16	0.003	-0.001	0.007	0.000	Cal	0.001	0.007	0.002
9/21/2013	17	0.005	0.002	0.011	0.000	Cal	0.003	0.006	0.002
9/21/2013	18	0.008	0.001	0.013	0.003	Cal	0.007	0.029	0.002
9/21/2013	19	0.022	0.000	0.023	0.004	Cal	0.003	0.012	0.002
9/21/2013	20	0.017	0.002	0.020	0.005	Cal	0.000	0.018	0.004
9/21/2013	21	0.023	0.005	0.024	0.006	Cal	0.004	---	---
9/21/2013	22	0.022	0.004	0.022	0.008	Cal	0.008	---	---
9/21/2013	23	0.018	0.004	0.025	0.009	Cal	0.007	---	---
9/22/2013	0	0.014	0.004	0.018	0.006	Cal	0.006	---	---
9/22/2013	1	0.014	0.001	0.019	0.004	Cal	0.004	---	---
9/22/2013	2	0.013	0.002	0.014	0.003	Cal	0.003	---	---
9/22/2013	3	0.037	0.004	0.033	0.006	Cal	0.005	---	---
9/22/2013	4	0.057	0.007	0.066	0.010	Cal	0.010	---	---
9/22/2013	5	0.107	0.006	0.086	0.007	Cal	0.023	---	---
9/22/2013	6	0.200	0.006	0.204	0.009	Cal	0.015	---	---
9/22/2013	7	0.150	0.007	0.285	0.015	Cal	0.014	---	---
9/22/2013	8	0.051	0.005	0.068	0.007	Cal	0.011	---	---
9/22/2013	9	0.034	0.005	0.160	0.009	Cal	0.037	---	---
9/22/2013	10	0.027	0.004	0.985	0.106	Cal	0.014	---	---
9/22/2013	11	0.028	0.001	0.028	0.004	Cal	0.011	---	---
9/22/2013	12	0.024	-0.001	0.026	0.002	Cal	0.005	---	---
9/22/2013	13	0.038	0.002	0.038	0.000	Cal	0.000	---	---
9/22/2013	14	0.031	0.002	0.039	0.001	Cal	0.001	---	---
9/22/2013	15	0.060	0.002	0.081	0.004	Cal	0.004	---	---
9/22/2013	16	0.028	0.004	0.032	0.006	Cal	0.002	---	---
9/22/2013	17	0.034	0.002	0.034	0.005	Cal	0.001	---	---
9/22/2013	18	0.032	0.003	0.037	0.004	Cal	0.002	---	---
9/22/2013	19	0.023	0.004	0.031	0.005	Cal	0.003	---	---
9/22/2013	20	0.020	0.004	0.028	0.006	Cal	0.003	---	---
9/22/2013	21	0.020	0.004	0.027	0.004	Cal	0.005	---	---
9/22/2013	22	0.020	0.003	0.025	0.004	Cal	0.003	---	---
9/22/2013	23	0.017	0.004	0.022	0.004	Cal	0.001	---	---



## DESERT SUNLIGHT SOLAR FARM

### TABLE 3 - HOURLY BAM DATA

(Please refer to Table 3 cover page for additional details.)

All values are in units of milligrams per cubic meter.

Date	Hour	North Station		East Station		South Station		West Station	
		PM10	PM2.5	PM10	PM2.5	PM10	PM2.5	PM10	PM2.5
9/23/2013	0	0.013	0.004	0.016	0.004	Cal	0.002	---	---
9/23/2013	1	0.013	0.004	0.012	0.005	Cal	0.002	---	---
9/23/2013	2	0.012	0.004	0.019	0.003	Cal	0.002	---	---
9/23/2013	3	0.017	0.005	0.017	0.003	Cal	0.000	---	---
9/23/2013	4	0.024	0.006	0.022	0.005	Cal	0.001	---	---
9/23/2013	5	0.016	0.005	0.018	0.005	Cal	0.002	---	---
9/23/2013	6	0.020	0.005	0.022	0.005	Cal	0.000	---	---
9/23/2013	7	0.016	0.007	0.019	0.004	Cal	0.003	---	---
9/23/2013	8	0.014	0.005	0.016	0.002	Cal	0.003	---	---
9/23/2013	9	0.014	0.004	0.014	0.004	Cal	0.002	---	---
9/23/2013	10	0.020	0.005	0.015	0.005	Cal	0.004	---	---
9/23/2013	11	0.013	0.002	0.010	0.002	Cal	0.003	---	---
9/23/2013	12	0.010	0.000	0.010	0.001	Cal	0.000	---	---
9/23/2013	13	0.005	0.000	0.009	0.002	Cal	-0.002	---	---
9/23/2013	14	0.003	-0.001	0.006	0.000	Cal	-0.001	---	---
9/23/2013	15	0.003	0.001	0.002	-0.001	Cal	-0.001	---	---
9/23/2013	16	0.003	0.000	0.002	-0.001	Cal	0.985	---	---
9/23/2013	17	0.004	-0.003	0.004	0.000	Cal	0.985	---	---
9/23/2013	18	0.003	-0.001	0.002	0.001	Cal	-0.003	---	---
9/23/2013	19	0.001	0.001	0.003	0.002	Cal	0.985	---	---
9/23/2013	20	0.004	0.001	0.005	0.003	Cal	0.000	---	---
9/23/2013	21	0.004	0.001	0.008	0.004	Cal	0.985	---	---
9/23/2013	22	0.007	-0.001	0.007	0.004	Cal	0.985	---	---
9/23/2013	23	0.009	0.000	0.006	0.002	Cal	0.003	---	---
9/24/2013	0	0.005	0.001	0.010	0.002	Cal	0.002	---	---
9/24/2013	1	0.004	-0.002	0.009	0.003	Cal	-0.001	---	---
9/24/2013	2	0.003	-0.003	0.007	0.000	Cal	-0.002	---	---
9/24/2013	3	0.001	-0.001	0.006	0.000	Cal	0.001	---	---
9/24/2013	4	0.003	0.004	0.006	0.000	Cal	0.002	---	---
9/24/2013	5	0.005	0.004	0.006	0.001	Cal	0.002	---	---
9/24/2013	6	0.006	0.003	0.009	0.004	Cal	-0.001	---	---
9/24/2013	7	0.011	0.002	0.010	0.003	Cal	-0.002	---	---
9/24/2013	8	0.010	0.003	0.018	0.002	Cal	-0.003	---	---
9/24/2013	9	0.006	0.004	0.009	0.001	Cal	-0.002	---	---
9/24/2013	10	0.005	0.001	0.011	0.002	Cal	0.000	---	---
9/24/2013	11	0.002	-0.002	0.036	0.002	0.985	0.000	---	---
9/24/2013	12	0.001	-0.002	0.006	0.000	0.007	0.000	---	---
9/24/2013	13	0.004	-0.002	0.006	-0.001	0.011	0.000	---	---
9/24/2013	14	0.006	-0.001	0.007	0.000	0.012	0.001	---	---
9/24/2013	15	0.003	-0.002	0.007	0.002	0.015	0.985	0.985	0.985
9/24/2013	16	0.004	-0.002	0.007	0.004	0.021	0.985	0.001	-0.009
9/24/2013	17	0.009	-0.001	0.010	0.004	0.014	0.985	0.004	-0.007
9/24/2013	18	0.012	0.000	0.013	0.005	0.018	0.003	0.008	-0.004
9/24/2013	19	0.022	0.002	0.028	0.006	0.019	0.985	0.012	-0.001
9/24/2013	20	0.021	0.005	0.024	0.009	0.018	0.004	0.014	0.001
9/24/2013	21	0.026	0.003	0.019	0.007	0.015	0.985	0.017	0.002
9/24/2013	22	0.026	0.001	0.023	0.004	0.022	0.004	0.022	0.004
9/24/2013	23	0.049	0.007	0.048	0.007	0.047	0.985	0.048	0.008



## DESERT SUNLIGHT SOLAR FARM

### TABLE 3 - HOURLY BAM DATA

(Please refer to Table 3 cover page for additional details.)

All values are in units of milligrams per cubic meter.

Date	Hour	North Station		East Station		South Station		West Station	
		PM10	PM2.5	PM10	PM2.5	PM10	PM2.5	PM10	PM2.5
9/25/2013	0	0.037	0.009	0.054	0.011	0.044	0.985	0.037	0.009
9/25/2013	1	0.033	0.007	0.039	0.011	0.034	0.046	0.029	0.007
9/25/2013	2	0.030	0.006	0.039	0.009	0.039	0.026	0.036	0.009
9/25/2013	3	0.035	0.006	0.037	0.008	0.037	0.015	0.033	0.008
9/25/2013	4	0.029	0.007	0.039	0.008	0.036	0.019	0.026	0.005
9/25/2013	5	0.032	0.007	0.039	0.010	0.039	0.011	0.032	0.007
9/25/2013	6	0.030	0.005	0.038	0.009	0.036	0.011	0.026	0.007
9/25/2013	7	0.034	0.006	0.040	0.008	0.045	0.012	0.024	0.005
9/25/2013	8	0.033	0.008	0.052	0.007	0.044	0.011	0.031	0.003
9/25/2013	9	0.030	0.005	0.047	0.008	0.039	0.011	0.032	0.003
9/25/2013	10	0.026	0.003	0.035	0.007	0.037	0.010	0.029	0.002
9/25/2013	11	0.020	0.001	0.040	0.004	0.104	0.016	0.037	0.000
9/25/2013	12	0.042	-0.002	0.188	0.008	0.451	0.053	0.056	0.002
9/25/2013	13	0.033	0.000	0.379	0.027	0.325	0.044	0.032	0.002
9/25/2013	14	0.069	0.002	0.809	0.055	0.985	0.185	-0.015	-0.015
9/25/2013	15	0.080	0.003	0.964	0.069	0.985	0.176	0.065	0.005
9/25/2013	16	0.055	0.004	0.269	0.021	0.845	0.059	0.063	0.005
9/25/2013	17	0.083	0.007	0.331	0.021	0.561	0.039	0.092	0.007
9/25/2013	18	0.100	0.010	0.193	0.014	0.373	0.026	0.117	0.009
9/25/2013	19	0.056	0.010	0.137	0.017	0.177	0.017	0.055	0.009
9/25/2013	20	0.054	0.006	0.075	0.011	0.110	0.009	0.052	0.009
9/25/2013	21	0.073	0.006	0.071	0.012	0.088	0.011	0.066	0.010
9/25/2013	22	0.040	0.006	0.048	0.009	0.054	0.012	0.040	0.009
9/25/2013	23	0.039	0.005	0.044	0.008	0.042	0.010	0.039	0.006
9/26/2013	0	0.025	0.004	0.032	0.007	0.035	0.008	0.023	0.005
9/26/2013	1	0.023	0.004	0.043	0.006	0.066	0.009	0.019	0.007
9/26/2013	2	0.088	0.007	0.068	0.008	0.048	0.010	0.062	0.008
9/26/2013	3	0.079	0.011	0.081	0.010	0.074	0.011	0.073	0.010
9/26/2013	4	0.073	0.010	0.081	0.012	0.075	0.017	0.075	0.010
9/26/2013	5	0.053	0.007	0.067	0.014	0.062	0.007	---	---
9/26/2013	6	0.040	0.007	0.043	0.014	0.041	0.006	---	---
9/26/2013	7	0.038	0.006	0.049	0.012	0.038	0.005	---	---
9/26/2013	8	0.035	0.005	0.036	0.007	0.043	0.005	---	---
9/26/2013	9	0.038	0.006	0.039	0.006	0.069	0.005	0.985	0.985
9/26/2013	10	0.026	0.005	0.030	0.006	0.029	0.005	0.029	-0.008
9/26/2013	11	0.024	0.005	0.027	0.006	0.022	0.006	0.016	-0.008
9/26/2013	12	0.025	0.005	0.047	0.009	0.067	0.006	0.022	-0.008
9/26/2013	13	0.033	0.006	0.057	0.009	0.027	0.005	0.033	-0.005
9/26/2013	14	0.043	0.006	0.985	0.007	0.492	0.009	0.029	-0.001
9/26/2013	15	0.054	0.008	0.048	0.008	0.272	0.012	0.040	0.001
9/26/2013	16	0.042	0.011	0.053	0.007	0.146	0.011	0.041	0.006
9/26/2013	17	0.029	0.007	0.031	0.005	0.112	0.011	0.034	0.006
9/26/2013	18	0.019	0.006	0.021	0.004	0.043	0.010	0.023	0.005
9/26/2013	19	0.016	0.006	0.018	0.005	0.014	0.009	0.012	0.006
9/26/2013	20	0.013	0.002	0.023	0.004	0.019	0.007	0.012	0.007
9/26/2013	21	0.027	0.003	0.026	0.006	0.022	0.004	0.022	0.005
9/26/2013	22	0.017	0.006	0.028	0.008	0.016	0.004	0.014	0.005
9/26/2013	23	0.011	0.005	0.023	0.006	0.015	0.005	0.014	0.004



## DESERT SUNLIGHT SOLAR FARM

### TABLE 3 - HOURLY BAM DATA

(Please refer to Table 3 cover page for additional details.)

All values are in units of milligrams per cubic meter.

Date	Hour	North Station		East Station		South Station		West Station	
		PM10	PM2.5	PM10	PM2.5	PM10	PM2.5	PM10	PM2.5
9/27/2013	0	0.040	0.007	0.029	0.003	0.038	0.001	0.039	0.005
9/27/2013	1	0.036	0.009	0.042	0.004	0.044	0.000	0.038	0.006
9/27/2013	2	0.034	0.006	0.041	0.007	0.039	0.002	0.028	0.004
9/27/2013	3	0.030	0.005	0.036	0.007	0.037	0.005	0.029	0.004
9/27/2013	4	0.032	0.005	0.038	0.006	0.035	0.004	0.027	0.006
9/27/2013	5	0.029	0.004	0.032	0.005	0.040	0.005	0.025	0.004
9/27/2013	6	0.031	0.005	0.032	0.005	0.032	0.005	0.027	0.002
9/27/2013	7	0.039	0.005	0.040	0.007	0.033	0.004	0.031	0.003
9/27/2013	8	0.038	0.004	0.049	0.006	0.039	0.003	0.030	0.004
9/27/2013	9	0.027	0.005	0.043	0.006	0.047	0.005	0.985	0.985
9/27/2013	10	0.026	0.004	0.023	0.002	0.247	0.019	0.985	0.985
9/27/2013	11	0.033	0.001	0.027	-0.001	0.196	0.009	0.015	0.003
9/27/2013	12	0.036	0.000	0.316	0.019	0.483	0.027	0.022	0.002
9/27/2013	13	0.016	0.001	0.017	0.002	0.251	0.012	0.018	0.002
9/27/2013	14	0.011	0.000	0.232	0.003	---	---	0.009	0.003
9/27/2013	15	0.010	-0.001	0.029	0.004	---	---	0.007	0.002
9/27/2013	16	0.008	0.000	0.000	0.002	---	---	0.007	0.002
9/27/2013	17	0.005	0.000	0.002	0.003	---	---	0.007	0.001
9/27/2013	18	0.004	0.002	0.002	0.003	---	---	0.004	0.000
9/27/2013	19	0.005	0.005	0.003	0.002	---	---	0.004	0.003
9/27/2013	20	0.004	0.003	0.010	0.003	---	---	0.004	0.005
9/27/2013	21	0.003	0.001	0.014	0.002	---	---	0.006	0.003
9/27/2013	22	0.005	0.002	0.010	0.000	---	---	0.006	0.002
9/27/2013	23	0.009	0.001	0.006	-0.001	---	---	0.003	0.000
9/28/2013	0	0.006	0.002	0.007	0.002	---	---	0.003	0.000
9/28/2013	1	0.003	0.002	0.008	0.004	---	---	0.003	0.003
9/28/2013	2	0.006	0.001	0.007	-0.001	---	---	0.001	0.002
9/28/2013	3	0.008	0.002	0.008	-0.001	---	---	0.002	0.000
9/28/2013	4	0.007	0.001	0.009	0.003	---	---	0.005	0.001
9/28/2013	5	0.006	0.000	0.006	0.003	---	---	0.004	0.001
9/28/2013	6	0.006	0.002	0.006	0.001	---	---	0.003	0.002
9/28/2013	7	0.004	0.001	0.007	0.002	---	---	0.004	0.002
9/28/2013	8	0.006	0.000	0.005	0.002	---	---	0.008	0.002
9/28/2013	9	0.005	0.000	0.005	0.002	---	---	0.024	0.003
9/28/2013	10	0.002	0.001	0.006	0.000	---	---	0.000	-0.002
9/28/2013	11	0.001	-0.001	0.004	-0.002	---	---	0.000	-0.003
9/28/2013	12	0.003	-0.002	0.006	-0.001	0.985	0.985	0.000	-0.001
9/28/2013	13	0.003	-0.001	0.003	-0.001	0.017	0.001	0.000	-0.003
9/28/2013	14	0.000	-0.002	-0.001	-0.002	0.057	-0.005	-0.001	-0.001
9/28/2013	15	0.001	-0.001	0.000	-0.001	-0.004	-0.008	-0.001	0.000
9/28/2013	16	0.000	-0.001	0.003	0.001	-0.002	-0.009	0.001	0.001
9/28/2013	17	0.000	-0.002	0.002	0.001	-0.002	-0.009	0.002	0.001
9/28/2013	18	0.003	-0.002	-0.001	0.000	-0.001	-0.004	0.000	-0.001
9/28/2013	19	0.005	-0.002	0.003	0.002	0.002	-0.002	0.001	-0.003
9/28/2013	20	0.004	-0.001	0.006	0.005	0.004	0.002	0.001	-0.001
9/28/2013	21	0.001	0.001	0.007	0.006	0.007	0.003	0.003	0.001
9/28/2013	22	0.001	0.001	0.005	0.006	0.007	0.003	0.007	0.002
9/28/2013	23	0.006	0.000	0.007	0.005	0.005	0.003	0.006	0.001



## DESERT SUNLIGHT SOLAR FARM

### TABLE 3 - HOURLY BAM DATA

(Please refer to Table 3 cover page for additional details.)

All values are in units of milligrams per cubic meter.

Date	Hour	North Station		East Station		South Station		West Station	
		PM10	PM2.5	PM10	PM2.5	PM10	PM2.5	PM10	PM2.5
9/29/2013	0	0.003	0.000	0.009	0.005	0.002	0.000	0.003	-0.002
9/29/2013	1	0.003	0.001	0.004	0.005	0.000	0.000	0.002	-0.001
9/29/2013	2	0.003	0.002	0.003	0.002	0.001	0.001	0.015	0.000
9/29/2013	3	0.002	0.002	0.006	0.004	0.003	0.001	0.004	0.001
9/29/2013	4	0.003	0.001	0.006	0.004	0.006	0.001	0.006	0.002
9/29/2013	5	0.004	0.003	0.006	0.004	0.005	0.003	0.005	0.001
9/29/2013	6	0.007	0.003	0.007	0.004	0.004	0.006	0.002	0.002
9/29/2013	7	0.005	0.001	0.007	0.003	0.006	0.001	0.002	0.002
9/29/2013	8	0.004	0.002	0.006	0.002	0.007	-0.001	0.005	0.000
9/29/2013	9	0.004	0.003	0.006	0.002	0.005	0.001	0.002	0.002
9/29/2013	10	0.004	0.001	0.008	0.002	0.001	0.001	0.001	-0.001
9/29/2013	11	0.003	0.001	0.010	0.002	0.001	0.002	0.003	-0.005
9/29/2013	12	0.003	-0.001	0.005	0.001	0.002	0.001	0.000	-0.002
9/29/2013	13	0.004	-0.004	-0.002	0.001	0.002	-0.001	0.001	0.000
9/29/2013	14	0.003	-0.002	0.001	-0.001	0.000	-0.001	0.004	0.000
9/29/2013	15	0.001	0.001	0.001	-0.002	0.001	0.001	0.000	0.000
9/29/2013	16	0.002	0.001	0.000	-0.002	0.002	0.002	0.000	0.001
9/29/2013	17	0.006	0.001	0.003	0.002	0.002	0.000	0.006	-0.002
9/29/2013	18	0.007	0.001	0.009	0.005	0.005	0.985	0.007	-0.001
9/29/2013	19	0.007	0.000	0.011	0.004	0.007	0.001	0.009	0.005
9/29/2013	20	0.009	0.000	0.009	0.004	0.009	0.001	0.011	0.006
9/29/2013	21	0.010	0.002	0.012	0.003	0.017	-0.001	0.010	0.006
9/29/2013	22	0.007	0.004	0.014	0.003	0.014	-0.001	0.009	0.005
9/29/2013	23	0.007	0.003	0.016	0.006	0.011	-0.001	0.008	0.003
9/30/2013	0	0.010	0.003	0.013	0.006	0.008	0.001	0.008	0.002
9/30/2013	1	0.010	0.001	0.012	0.006	0.010	0.003	0.007	0.003
9/30/2013	2	0.009	0.001	0.010	0.004	0.008	0.001	0.009	0.003
9/30/2013	3	0.010	0.002	0.010	0.005	0.007	0.000	0.008	0.003
9/30/2013	4	0.010	0.003	0.012	0.006	0.008	0.002	0.007	0.004
9/30/2013	5	0.012	0.004	0.012	0.003	0.009	0.003	0.012	0.002
9/30/2013	6	0.013	0.002	0.012	0.005	0.011	0.004	0.012	0.003
9/30/2013	7	0.012	0.003	0.017	0.006	0.018	0.002	0.010	0.003
9/30/2013	8	0.012	0.005	0.015	0.007	0.011	-0.001	0.010	0.001
9/30/2013	9	0.012	0.005	0.011	0.008	0.985	0.985	0.011	0.003
9/30/2013	10	0.013	0.003	0.012	0.003	0.019	-0.002	0.011	0.003
9/30/2013	11	0.012	0.002	0.009	-0.001	0.014	-0.002	0.008	0.000
9/30/2013	12	0.010	0.002	0.005	0.002	0.012	0.000	0.010	-0.001
9/30/2013	13	0.009	0.000	0.002	0.002	0.015	0.001	0.011	0.000
9/30/2013	14	0.010	-0.002	0.004	0.000	0.009	-0.001	0.009	0.002
9/30/2013	15	0.012	0.000	0.006	0.001	0.012	-0.002	0.010	0.000
9/30/2013	16	0.012	0.002	0.006	0.002	0.015	0.001	0.013	0.002
9/30/2013	17	0.011	0.001	0.010	0.001	0.009	0.002	0.013	0.003
9/30/2013	18	0.011	0.002	0.026	0.003	0.016	0.003	0.030	0.002
9/30/2013	19	0.017	0.001	0.012	0.006	0.018	0.000	0.011	0.002
9/30/2013	20	0.012	0.001	0.020	0.006	0.023	0.000	0.011	0.004
9/30/2013	21	0.012	0.001	0.018	0.005	0.016	0.985	0.012	0.005
9/30/2013	22	0.011	0.002	0.017	0.004	0.012	0.001	0.012	0.004
9/30/2013	23	0.017	0.004	0.015	0.002	0.012	0.000	0.012	0.004



# Table 4

## Monitored Constituents

The table below shows the sample dates. Table 4 is on the following page.

Station	Week	Sample Date	Sample ID	Work Order	Duration
North	Week 1	9/5/2013	QFF 13-257	1325348	24
	Week 2	9/10/2013	QFF 13-260	1325950	24
	Week 3	9/17/2013	QFF 13-264	1326669	21.75
	Week 4	9/25/2013	QFF 13-292	1327462	22.67
East	Week 1	9/5/2013	QFF 13-258	1325350	24
	Week 2	9/10/2013	QFF 13-262	1325952	24
	Week 3	9/17/2013	QFF 13-265	1326670	24
	Week 4	9/25/2013	QFF 13-290	1327460	24
West	Week 1	9/5/2013	QFF 13-256	1325347	22.25
	Week 2	9/10/2013	QFF 13-259	1325949	21
	Week 3	9/17/2013	QFF 13-263	1326668	22.5
	Week 4	9/25/2013	QFF 13-289	1327459	19.5
South	Week 1	---	---	---	---
	Week 2	9/10/2013	QFF 13-261	1325951	24
	Week 3	9/17/2013	QFF 13-266	1326671	24
	Week 4	9/25/2013	QFF 13-291	1327461	24

**Note 1:** South Station pump motor not functional during Week 1.



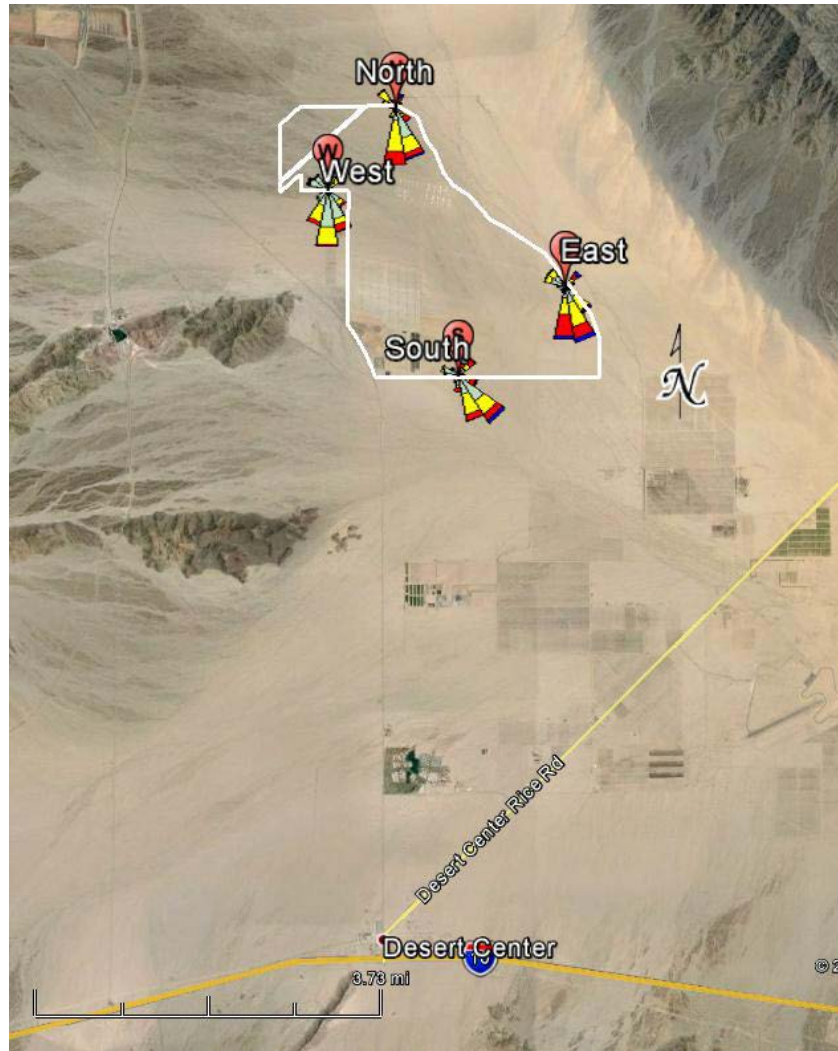
**Table 4: Monitored Constituents** See Footnotes

Analyte	Week	North Station	East Station	West Station	South Station
Elemental Carbon	Week 1	0.5	0.39	0.32	---
	Week 2	0.25	0.22	0.3	0.31
	Week 3	0.32	0.33	0.45	0.43
	Week 4	0.6	0.42	0.39	0.53
Arsenic	Week 1	< LOD	< LOD	< LOD	---
	Week 2	< LOD	< LOD	< LOD	< LOD
	Week 3	0.037	< LOD	< LOD	< LOD
	Week 4	< LOD	< LOD	< LOD	0.035
Beryllium	Week 1	< LOD	< LOD	< LOD	---
	Week 2	< LOD	< LOD	< LOD	< LOD
	Week 3	< LOD	< LOD	< LOD	0.00012
	Week 4	0.00013	0.00029	0.0002	0.00066
Cadmium	Week 1	< LOD	< LOD	< LOD	---
	Week 2	< LOD	0.00085	< LOD	< LOD
	Week 3	< LOD	< LOD	< LOD	< LOD
	Week 4	< LOD	< LOD	< LOD	< LOD
Copper	Week 1	0.042	0.059	0.033	---
	Week 2	0.04	0.15	0.028	0.041
	Week 3	0.081	0.069	0.027	0.05
	Week 4	0.022	0.033	0.03	0.064
Lead	Week 1	< LOD	< LOD	< LOD	---
	Week 2	< LOD	< LOD	< LOD	< LOD
	Week 3	0.017	0.011	< LOD	< LOD
	Week 4	< LOD	< LOD	0.016	0.014
Manganese	Week 1	0.022	0.019	0.018	---
	Week 2	0.0049	0.57	0.0061	0.015
	Week 3	0.045	0.038	0.034	0.076
	Week 4	0.079	0.16	0.11	0.38
Nickel	Week 1	< LOD	< LOD	< LOD	---
	Week 2	0.0012	0.0022	< LOD	0.0012
	Week 3	0.02	0.016	< LOD	0.0024
	Week 4	0.002	0.0043	0.0028	0.013
Selenium	Week 1	0.029	0.039	0.028	---
	Week 2	< LOD	< LOD	< LOD	< LOD
	Week 3	< LOD	< LOD	< LOD	0.04
	Week 4	< LOD	< LOD	< LOD	< LOD

**Note 1:** All values are in units of micrograms per cubic meter.

**Note 2:** < LOD = Less than Limit of Detection (LOD).

**Note 3:** Sample dates are shown in the cover page for this table.



**Figure 1: Meteorological Data Summary**

The triangles in Figure 1 indicate the direction the wind was blowing **to** rather than **from**. The table below provides a brief explanation of the various wind speed classes.

Color	Wind Speed (knots)
Cyan	≥ 22 knots
Green	17 – 21 knots
Blue	11 – 17 knots
Red	7 – 11 knots
Yellow	4 – 7 knots
Light Green	1 – 4 knots