

DOCKETED

Docket Number:	09-AFC-07C
Project Title:	Palen Solar Power Project - Compliance
TN #:	201293
Document Title:	Exh. 3081 Desert Sunlight Air Quality Monitoring Report April 2013
Description:	AQ monitoring report
Filer:	Ileene Anderson
Organization:	Center for Biological Diversity
Submitter Role:	Intervenor
Submission Date:	11/21/2013 4:44:32 PM
Docketed Date:	11/21/2013

**Desert Sunlight Solar Farm
Air Quality Monitoring Report**

April 2013





Report Index

Tables/Figures

Number	Table/Figure Name
Table 1	PM10 24-hour Time-Weighted Averages, All Sites
Table 2	PM2.5 24-hour Time-Weighted Averages, All Sites
Table 3	Hourly BAM Data, All Sites
Table 4	Monitored Constituents
Figure 1	Meteorological Data Summary



**Table 1: PM10 24-hour Time-Weighted Averages, All Sites
(See Footnotes)**

All values are in units of micrograms per cubic meter.

Date	North Station	East Station	South Station	West Station
4/1/2013	14	21	17	14
4/2/2013	11	12	11	10
4/3/2013	12	10	10	10
4/4/2013	9	13	13	10
4/5/2013	28	30	30	31
4/6/2013	23	25	25	23
4/7/2013	27	30	27	26
4/8/2013	368	329	306	294
4/9/2013	72	76	155	62
4/10/2013	10	16	19	11
4/11/2013	20	25	19	17
4/12/2013	---	20	19	20
4/13/2013	20	35	22	18
4/14/2013	24	31	27	25
4/15/2013	96	125	115	94
4/16/2013	69	66	114	68
4/17/2013	27	36	73	26
4/18/2013	8	10	16	15
4/19/2013	5	8	7	6
4/20/2013	15	18	18	16
4/21/2013	18	19	21	18
4/22/2013	19	31	28	22
4/23/2013	37	83	55	40
4/24/2013	18	21	27	20
4/25/2013	29	38	36	29
4/26/2013	21	26	26	23
4/27/2013	20	22	20	20
4/28/2013	19	20	19	19
4/29/2013	22	26	30	23
4/30/2013	23	38	33	23

Note 1: Please refer to Table 3 for the raw hourly data and treatment of valid and invalid values. All values in the above table are at actual conditions.

Note 2: Days marked 'No Data' are days for which there is no hourly data.

Note 3: Days marked (---) are days for which there is either more than 7 hours of negative data points or more than 12 hours of invalid data points.



**Table 2: PM2.5 24-hour Time-Weighted Averages, All Sites
(See Footnotes)**

All values are in units of micrograms per cubic meter.

Date	North Station	East Station	South Station	West Station
4/1/2013	2.5	4.9	3.8	3
4/2/2013	1.3	4	2.8	2
4/3/2013	2.5	3.8	3.2	2.8
4/4/2013	2.4	3.9	3.6	2.2
4/5/2013	5	6.5	6.7	7
4/6/2013	4.8	6.2	5.8	5.3
4/7/2013	5.4	6.1	5.9	4.5
4/8/2013	34	32.6	43.6	29.3
4/9/2013	6.6	8.5	11	6.3
4/10/2013	1.3	2.3	2.3	1.4
4/11/2013	2.9	4.1	2.8	2.7
4/12/2013	5.1	5.4	5.3	4.3
4/13/2013	4.4	6.7	4.9	4.8
4/14/2013	5.5	6.4	7.1	6
4/15/2013	13.2	14.6	13.1	12.3
4/16/2013	9.5	9.3	11.5	9.5
4/17/2013	4.7	5	6.2	4
4/18/2013	2.7	3.7	3.3	2.8
4/19/2013	2.1	3.5	1.3	1.9
4/20/2013	4.5	4.8	4.2	3.8
4/21/2013	5.4	5.7	5.8	4.3
4/22/2013	5.9	7	6.2	6
4/23/2013	8.5	11.6	9.3	8.8
4/24/2013	4	5.3	4.8	4.1
4/25/2013	8.5	9.6	10.2	7.4
4/26/2013	7.9	10.9	8.5	7.6
4/27/2013	6.9	7.5	7.1	6.1
4/28/2013	7.2	9.2	7.5	9.5
4/29/2013	8.5	8.6	8.6	8
4/30/2013	7.6	9.8	9	8.3

Note 1: Please refer to Table 3 for the raw hourly data and treatment of valid and invalid values. All values in the above table are at actual conditions.

Note 2: Days marked 'No Data' are days for which there is no hourly data.

Note 3: Days marked (---) are days for which there is either more than 7 hours of negative data points or more than 12 hours of invalid data points.



Table 3

Hourly BAM Data, All Stations

Please note the following:

1. PM10 and PM2.5 are at actual conditions.
2. Hours for which there are no BAM data are marked "---"
3. Data marked with **bold red** text is invalid due to either an error code produced by the BAM or hourly wind speed > 25 mph or an out-of-range concentration.
4. Data marked with **bold green** text is valid. However, this data is highlighted since there was either a "warning" error code or hourly shelter temperature change exceeding the instrument tolerance.
5. Data marked with 'Cal' indicates that the BAM was undergoing calibration. This data is excluded from the 24-hour average calculations.



DESERT SUNLIGHT SOLAR FARM

TABLE 3 - HOURLY BAM DATA

(Please refer to Table 3 cover page for additional details.)

All values are in units of milligrams per cubic meter.

Date	Hour	North Station		East Station		South Station		West Station	
		PM10	PM2.5	PM10	PM2.5	PM10	PM2.5	PM10	PM2.5
4/1/2013	0	0.014	0.006	0.015	0.001	0.010	0.003	0.020	0.006
4/1/2013	1	0.013	0.003	0.025	0.004	0.025	0.005	0.016	0.007
4/1/2013	2	0.017	0.003	0.014	0.008	0.013	0.005	0.015	0.004
4/1/2013	3	0.014	0.004	0.016	0.006	0.011	0.004	0.009	0.003
4/1/2013	4	0.011	0.001	0.014	0.003	0.007	0.004	0.009	0.002
4/1/2013	5	0.010	0.002	0.011	0.004	0.008	0.005	0.007	0.001
4/1/2013	6	0.011	0.003	0.009	0.007	0.009	0.004	0.006	0.004
4/1/2013	7	0.007	0.002	0.008	0.006	0.010	0.006	0.006	0.006
4/1/2013	8	0.004	0.001	0.008	0.004	0.017	0.005	0.010	0.005
4/1/2013	9	0.006	0.001	0.011	0.004	0.013	0.002	0.013	0.003
4/1/2013	10	0.010	0.002	0.010	0.005	0.013	0.002	0.013	0.000
4/1/2013	11	0.007	0.001	0.007	0.003	0.011	0.003	0.010	0.002
4/1/2013	12	0.021	0.002	0.023	0.001	0.016	0.000	0.010	0.004
4/1/2013	13	0.014	0.001	0.014	0.003	0.012	0.003	0.016	0.001
4/1/2013	14	0.013	0.000	0.120	0.009	0.011	0.004	0.014	-0.001
4/1/2013	15	0.011	0.001	0.011	0.008	0.013	0.003	0.013	-0.002
4/1/2013	16	0.011	0.001	0.017	0.002	0.021	0.003	0.011	0.002
4/1/2013	17	0.010	0.000	0.020	0.002	0.042	0.003	0.017	0.003
4/1/2013	18	0.024	0.004	0.030	0.005	0.033	0.003	0.022	0.002
4/1/2013	19	0.031	0.007	0.015	0.007	0.020	0.004	0.012	0.005
4/1/2013	20	0.022	0.005	0.026	0.008	0.026	0.005	0.018	0.006
4/1/2013	21	0.018	0.003	0.025	0.007	0.021	0.005	0.013	0.003
4/1/2013	22	0.016	0.003	0.020	0.005	0.013	0.005	0.017	0.003
4/1/2013	23	0.025	0.004	0.029	0.005	0.029	0.005	0.028	0.004
4/2/2013	0	0.027	0.004	0.023	0.005	0.029	0.005	0.037	0.003
4/2/2013	1	0.038	0.004	0.040	0.003	0.029	0.005	0.030	0.004
4/2/2013	2	0.015	0.003	0.025	0.005	0.014	0.006	0.014	0.003
4/2/2013	3	0.029	0.001	0.010	0.005	0.016	0.005	0.014	0.002
4/2/2013	4	0.009	0.001	0.011	0.005	0.007	0.004	0.013	0.003
4/2/2013	5	0.008	0.003	0.009	0.008	0.007	0.002	0.011	0.004
4/2/2013	6	0.009	0.003	0.009	0.005	0.009	0.003	0.009	0.006
4/2/2013	7	0.010	0.002	0.011	0.002	0.013	0.003	0.011	0.008
4/2/2013	8	0.008	0.003	0.011	0.005	---	---	0.010	0.007
4/2/2013	9	0.008	0.003	0.009	0.007	0.017	0.003	0.007	0.003
4/2/2013	10	0.011	0.001	0.007	0.005	0.013	0.004	0.009	0.000
4/2/2013	11	0.010	0.000	0.010	0.004	0.009	0.004	0.018	0.000
4/2/2013	12	0.008	0.000	0.012	0.004	0.010	0.003	0.007	0.001
4/2/2013	13	0.010	-0.001	0.015	0.002	0.010	0.002	0.005	0.001
4/2/2013	14	0.007	0.000	0.005	0.002	0.004	0.003	0.004	0.000
4/2/2013	15	0.005	0.000	0.006	0.003	0.007	0.002	0.005	0.000
4/2/2013	16	0.008	-0.001	0.006	0.002	0.011	0.002	0.006	-0.002
4/2/2013	17	0.007	0.000	0.009	0.002	0.010	0.001	0.006	-0.001
4/2/2013	18	0.008	0.001	0.014	0.003	0.008	0.000	0.003	0.002
4/2/2013	19	0.007	0.000	0.016	0.003	0.007	0.000	0.004	0.002
4/2/2013	20	0.003	0.000	0.008	0.004	0.006	-0.001	0.007	-0.001
4/2/2013	21	0.004	0.001	0.008	0.006	0.003	0.001	0.007	0.000
4/2/2013	22	0.004	0.002	0.007	0.004	0.002	0.003	0.005	0.001
4/2/2013	23	0.006	0.001	0.008	0.003	0.004	0.004	0.004	0.001



DESERT SUNLIGHT SOLAR FARM

TABLE 3 - HOURLY BAM DATA

(Please refer to Table 3 cover page for additional details.)

All values are in units of milligrams per cubic meter.

Date	Hour	North Station		East Station		South Station		West Station	
		PM10	PM2.5	PM10	PM2.5	PM10	PM2.5	PM10	PM2.5
4/3/2013	0	0.007	0.000	0.008	0.004	0.005	0.001	0.008	0.002
4/3/2013	1	0.006	-0.001	0.006	0.003	0.004	0.001	0.008	0.003
4/3/2013	2	0.009	0.000	0.008	0.002	0.005	0.003	0.008	0.005
4/3/2013	3	0.015	0.005	0.020	0.004	0.020	0.004	0.018	0.004
4/3/2013	4	0.020	0.006	0.019	0.004	0.016	0.004	0.020	0.002
4/3/2013	5	0.015	0.003	0.016	0.005	0.017	0.005	0.012	0.004
4/3/2013	6	0.013	0.003	0.017	0.006	0.011	0.007	0.013	0.006
4/3/2013	7	0.016	0.006	0.016	0.005	0.023	0.008	0.014	0.006
4/3/2013	8	0.016	0.006	0.011	0.008	0.016	0.006	0.020	0.005
4/3/2013	9	0.014	0.005	0.012	0.007	0.012	0.002	0.014	0.002
4/3/2013	10	0.013	0.004	0.012	0.007	0.013	0.000	-0.015	-0.015
4/3/2013	11	0.018	0.002	0.026	0.006	0.011	0.003	0.008	0.002
4/3/2013	12	0.016	-0.001	0.007	0.003	0.007	0.004	0.008	0.001
4/3/2013	13	0.011	0.000	0.007	0.002	0.006	0.002	0.005	0.001
4/3/2013	14	0.007	0.003	0.006	0.001	0.006	0.001	0.003	0.002
4/3/2013	15	0.004	0.003	0.006	-0.001	0.005	0.002	0.002	0.001
4/3/2013	16	0.004	0.001	0.007	0.000	0.008	0.004	0.006	0.002
4/3/2013	17	0.005	0.000	0.001	0.004	0.022	0.002	0.028	0.003
4/3/2013	18	0.006	0.002	0.002	0.005	0.006	0.000	0.007	0.002
4/3/2013	19	0.004	0.001	0.007	0.004	0.004	0.002	0.002	0.001
4/3/2013	20	0.004	0.003	0.009	0.003	0.005	0.003	0.000	0.003
4/3/2013	21	0.007	0.002	0.008	0.003	0.008	0.005	0.005	0.002
4/3/2013	22	0.011	0.001	0.005	0.003	0.007	0.005	0.006	0.002
4/3/2013	23	0.048	0.006	0.008	0.002	0.006	0.002	0.006	0.003
4/4/2013	0	0.008	0.006	0.009	0.004	0.006	0.002	0.005	0.001
4/4/2013	1	0.007	0.001	0.010	0.006	0.008	0.003	0.007	0.001
4/4/2013	2	0.007	0.000	0.010	0.004	0.009	0.002	0.007	0.002
4/4/2013	3	0.007	0.002	0.009	0.000	0.005	0.001	0.004	0.001
4/4/2013	4	0.005	0.002	0.010	0.000	0.004	0.001	0.005	0.000
4/4/2013	5	0.005	0.003	0.009	0.003	0.005	0.001	0.005	0.002
4/4/2013	6	0.006	0.001	0.006	0.004	0.006	0.002	0.005	0.002
4/4/2013	7	0.004	0.000	0.006	0.003	0.007	0.002	0.006	0.000
4/4/2013	8	0.005	0.000	0.010	0.005	0.009	0.000	0.009	0.002
4/4/2013	9	0.006	0.001	0.008	0.004	0.011	0.001	0.007	0.001
4/4/2013	10	0.985	0.985	0.003	0.001	0.027	0.005	0.007	0.001
4/4/2013	11	0.006	0.002	0.003	0.002	0.027	0.004	0.985	0.985
4/4/2013	12	0.007	0.003	0.008	0.002	0.014	0.002	0.011	0.001
4/4/2013	13	0.008	0.002	0.011	0.004	0.012	0.004	0.011	0.002
4/4/2013	14	0.011	0.001	0.033	0.006	0.012	0.985	0.010	0.000
4/4/2013	15	0.010	0.003	0.016	0.006	0.985	0.006	0.008	0.002
4/4/2013	16	0.006	0.001	0.015	0.004	0.019	0.004	0.007	0.005
4/4/2013	17	0.006	0.000	0.017	0.002	0.015	0.003	0.006	0.002
4/4/2013	18	0.009	0.002	0.011	0.002	0.008	0.006	0.008	0.001
4/4/2013	19	0.012	0.003	0.011	0.004	0.009	0.004	0.009	0.002
4/4/2013	20	0.020	0.005	0.025	0.006	0.026	0.005	0.023	0.004
4/4/2013	21	0.026	0.005	0.029	0.006	0.027	0.009	0.029	0.005
4/4/2013	22	0.023	0.006	0.023	0.008	0.023	0.008	0.022	0.008
4/4/2013	23	0.013	0.006	0.020	0.008	0.016	0.008	0.011	0.006



DESERT SUNLIGHT SOLAR FARM

TABLE 3 - HOURLY BAM DATA

(Please refer to Table 3 cover page for additional details.)

All values are in units of milligrams per cubic meter.

Date	Hour	North Station		East Station		South Station		West Station	
		PM10	PM2.5	PM10	PM2.5	PM10	PM2.5	PM10	PM2.5
4/5/2013	0	0.017	0.005	0.014	0.006	0.014	0.006	0.017	0.004
4/5/2013	1	0.013	0.004	0.012	0.005	0.014	0.003	0.016	0.007
4/5/2013	2	0.013	0.004	0.011	0.004	0.013	0.003	0.010	0.007
4/5/2013	3	0.016	0.003	0.024	0.005	0.016	0.004	0.020	0.004
4/5/2013	4	0.017	0.003	0.020	0.007	0.019	0.005	0.015	0.004
4/5/2013	5	0.015	0.006	0.020	0.006	0.015	0.006	0.018	0.006
4/5/2013	6	0.018	0.005	0.019	0.007	0.018	0.006	0.020	0.008
4/5/2013	7	0.016	0.004	0.021	0.008	0.017	0.008	0.022	0.006
4/5/2013	8	0.055	0.005	0.028	0.008	0.042	0.010	0.059	0.007
4/5/2013	9	0.051	0.006	0.055	0.007	0.075	0.009	0.056	0.010
4/5/2013	10	0.037	0.006	0.050	0.006	0.046	0.008	0.047	0.011
4/5/2013	11	0.040	0.006	0.041	0.005	0.042	0.009	0.036	0.008
4/5/2013	12	0.047	0.006	0.046	0.006	0.047	0.009	0.056	0.008
4/5/2013	13	0.027	0.007	0.025	0.007	0.025	0.008	0.031	0.011
4/5/2013	14	0.022	0.005	0.025	0.005	0.023	0.006	0.026	0.009
4/5/2013	15	0.021	0.003	0.016	0.004	0.011	0.006	0.019	0.006
4/5/2013	16	0.012	0.002	0.006	0.002	0.009	0.004	0.013	0.003
4/5/2013	17	0.011	0.000	0.009	0.003	0.008	0.003	0.013	0.004
4/5/2013	18	0.010	0.002	0.017	0.006	0.011	0.005	0.012	0.004
4/5/2013	19	0.015	0.003	0.016	0.007	0.012	0.005	0.016	0.005
4/5/2013	20	0.008	0.005	0.015	0.006	0.018	0.005	0.015	0.004
4/5/2013	21	0.018	0.005	0.022	0.006	0.019	0.006	0.016	0.004
4/5/2013	22	0.018	0.004	0.027	0.008	0.024	0.005	0.024	0.006
4/5/2013	23	0.157	0.021	0.177	0.022	0.176	0.022	0.160	0.023
4/6/2013	0	0.075	0.015	0.098	0.016	0.085	0.011	0.070	0.009
4/6/2013	1	0.041	0.009	0.052	0.012	0.047	0.011	0.044	0.009
4/6/2013	2	0.039	0.008	0.040	0.011	0.039	0.009	0.032	0.009
4/6/2013	3	0.018	0.007	0.021	0.008	0.019	0.008	0.020	0.009
4/6/2013	4	0.022	0.006	0.023	0.007	0.027	0.005	0.024	0.008
4/6/2013	5	0.016	0.005	0.024	0.007	0.021	0.003	0.017	0.004
4/6/2013	6	0.019	0.004	0.020	0.006	0.016	0.005	0.011	0.004
4/6/2013	7	0.015	0.003	0.015	0.006	0.016	0.005	0.017	0.005
4/6/2013	8	0.017	0.006	0.018	0.007	0.018	0.005	0.015	0.005
4/6/2013	9	0.012	0.005	0.014	0.006	0.014	0.006	0.013	0.003
4/6/2013	10	0.011	0.004	0.014	0.004	0.014	0.006	0.013	0.002
4/6/2013	11	0.011	0.004	0.013	0.004	0.014	0.004	0.014	0.002
4/6/2013	12	0.011	0.003	0.019	0.005	0.014	0.004	0.014	0.002
4/6/2013	13	0.011	0.002	0.013	0.003	0.012	0.003	0.013	0.004
4/6/2013	14	0.010	0.001	0.013	0.003	0.011	0.003	0.012	0.006
4/6/2013	15	0.008	0.001	0.010	0.003	0.010	0.005	0.011	0.004
4/6/2013	16	0.018	0.002	0.007	0.001	0.010	0.004	0.010	0.001
4/6/2013	17	0.014	0.002	0.009	0.006	0.011	0.003	0.009	0.000
4/6/2013	18	0.013	0.002	0.011	0.008	0.011	0.005	0.008	0.002
4/6/2013	19	0.012	0.003	0.010	0.006	0.016	0.006	0.009	0.004
4/6/2013	20	0.016	0.002	0.017	0.004	0.019	0.004	0.016	0.005
4/6/2013	21	0.027	0.003	0.024	0.003	0.026	0.003	0.029	0.008
4/6/2013	22	0.057	0.007	0.044	0.005	0.052	0.006	0.061	0.010
4/6/2013	23	0.067	0.011	0.068	0.007	0.089	0.016	0.079	0.011



DESERT SUNLIGHT SOLAR FARM

TABLE 3 - HOURLY BAM DATA

(Please refer to Table 3 cover page for additional details.)

All values are in units of milligrams per cubic meter.

Date	Hour	North Station		East Station		South Station		West Station	
		PM10	PM2.5	PM10	PM2.5	PM10	PM2.5	PM10	PM2.5
4/7/2013	0	0.054	0.010	0.063	0.008	0.051	0.011	0.053	0.008
4/7/2013	1	0.032	0.006	0.037	0.010	0.035	0.009	0.029	0.005
4/7/2013	2	0.020	0.003	0.027	0.009	0.038	0.005	0.022	0.003
4/7/2013	3	0.028	0.004	0.028	0.003	0.026	0.003	0.024	0.002
4/7/2013	4	0.045	0.007	0.050	0.005	0.034	0.006	0.041	0.003
4/7/2013	5	0.047	0.008	0.070	0.011	0.044	0.006	0.050	0.004
4/7/2013	6	0.037	0.006	0.042	0.010	0.044	0.005	0.043	0.005
4/7/2013	7	0.032	0.006	0.037	0.006	0.038	0.006	0.026	0.006
4/7/2013	8	0.028	0.006	0.031	0.005	0.028	0.006	0.029	0.006
4/7/2013	9	0.031	0.006	0.031	0.006	0.029	0.005	0.029	0.004
4/7/2013	10	0.035	0.004	0.031	0.006	0.028	0.005	0.031	0.005
4/7/2013	11	0.026	0.005	0.031	0.005	0.030	0.005	0.029	0.007
4/7/2013	12	0.022	0.006	0.027	0.004	0.023	0.005	0.023	0.006
4/7/2013	13	0.019	0.006	0.022	0.002	0.020	0.005	0.016	0.004
4/7/2013	14	0.024	0.005	0.022	0.003	0.019	0.005	0.018	0.004
4/7/2013	15	0.020	0.003	0.023	0.005	0.020	0.005	0.018	0.003
4/7/2013	16	0.018	0.005	0.017	0.004	0.016	0.005	0.017	0.002
4/7/2013	17	0.010	0.004	0.018	0.005	0.014	0.004	0.011	0.004
4/7/2013	18	0.016	0.001	0.015	0.004	0.014	0.004	0.011	0.004
4/7/2013	19	0.017	0.002	0.014	0.004	0.017	0.005	0.012	0.002
4/7/2013	20	0.027	0.006	0.025	0.007	0.026	0.007	0.021	0.004
4/7/2013	21	0.027	0.008	0.020	0.007	0.022	0.008	0.026	0.007
4/7/2013	22	0.015	0.006	0.022	0.009	0.021	0.008	0.019	0.007
4/7/2013	23	0.018	0.007	0.019	0.009	0.021	0.009	0.019	0.004
4/8/2013	0	0.017	0.008	0.021	0.008	0.022	0.008	0.022	0.005
4/8/2013	1	0.075	0.010	0.058	0.011	0.061	0.010	0.075	0.010
4/8/2013	2	0.046	0.012	0.050	0.014	0.050	0.012	0.042	0.011
4/8/2013	3	0.033	0.011	0.043	0.012	0.037	0.011	0.037	0.011
4/8/2013	4	0.032	0.013	0.036	0.011	0.039	0.009	0.033	0.011
4/8/2013	5	0.030	0.012	0.024	0.011	0.032	0.008	0.031	0.009
4/8/2013	6	0.033	0.010	0.034	0.010	0.032	0.010	0.029	0.010
4/8/2013	7	0.030	0.009	0.032	0.009	0.035	0.015	0.030	0.008
4/8/2013	8	0.026	0.010	0.051	0.011	0.036	0.011	0.032	0.008
4/8/2013	9	0.065	0.009	0.124	0.010	0.076	0.010	0.066	0.011
4/8/2013	10	0.147	0.009	0.160	0.016	0.312	0.019	0.137	0.011
4/8/2013	11	0.259	0.023	0.219	0.021	0.229	0.024	0.222	0.021
4/8/2013	12	0.311	0.022	0.314	0.026	0.255	0.018	0.262	0.020
4/8/2013	13	0.985	0.138	0.985	0.103	0.985	0.106	0.985	0.140
4/8/2013	14	0.760	0.057	0.978	0.069	0.985	0.101	0.683	0.052
4/8/2013	15	0.694	0.044	0.985	0.076	0.985	0.172	0.600	0.045
4/8/2013	16	0.302	0.020	0.869	0.045	0.684	0.036	0.192	0.017
4/8/2013	17	0.197	0.013	0.329	0.025	0.266	0.010	0.121	0.014
4/8/2013	18	0.486	0.043	0.467	0.035	0.570	0.041	0.492	0.038
4/8/2013	19	0.985	0.090	0.985	0.100	0.985	0.114	0.985	0.084
4/8/2013	20	0.985	0.093	0.985	0.136	0.985	0.234	0.985	0.080
4/8/2013	21	0.985	0.061	0.633	0.055	0.985	0.072	0.592	0.047
4/8/2013	22	0.985	0.071	0.516	0.044	0.505	0.042	0.529	0.039
4/8/2013	23	0.353	0.028	0.294	0.028	0.236	0.024	0.261	0.024



DESERT SUNLIGHT SOLAR FARM

TABLE 3 - HOURLY BAM DATA

(Please refer to Table 3 cover page for additional details.)

All values are in units of milligrams per cubic meter.

Date	Hour	North Station		East Station		South Station		West Station	
		PM10	PM2.5	PM10	PM2.5	PM10	PM2.5	PM10	PM2.5
4/9/2013	0	0.244	0.018	0.193	0.022	0.340	0.023	0.229	0.023
4/9/2013	1	0.150	0.014	0.219	0.015	0.319	0.027	0.123	0.017
4/9/2013	2	0.078	0.012	0.100	0.012	0.985	0.064	0.083	0.008
4/9/2013	3	0.049	0.009	0.048	0.009	0.215	0.012	0.048	0.007
4/9/2013	4	0.046	0.006	0.042	0.008	0.046	0.009	0.046	0.006
4/9/2013	5	0.054	0.007	0.043	0.008	0.049	0.007	0.049	0.005
4/9/2013	6	0.031	0.007	0.040	0.008	0.034	0.007	0.040	0.005
4/9/2013	7	0.033	0.004	0.039	0.008	0.043	0.007	0.044	0.008
4/9/2013	8	0.035	0.004	0.039	0.008	0.058	0.007	0.034	0.006
4/9/2013	9	0.071	0.005	0.053	0.005	0.274	0.009	0.068	0.005
4/9/2013	10	0.109	0.004	0.117	0.005	0.264	0.011	0.070	0.005
4/9/2013	11	0.043	0.003	0.063	0.003	0.118	0.009	0.026	0.003
4/9/2013	12	0.027	0.001	0.056	0.002	0.182	0.007	0.027	0.001
4/9/2013	13	0.219	0.006	0.123	0.005	0.160	0.007	0.061	0.001
4/9/2013	14	0.132	0.010	0.130	0.009	0.144	0.010	0.081	0.004
4/9/2013	15	0.122	0.012	0.146	0.012	0.224	0.015	0.164	0.009
4/9/2013	16	0.073	0.010	0.088	0.013	0.140	0.013	0.072	0.010
4/9/2013	17	0.046	0.004	0.057	0.011	0.058	0.010	0.046	0.007
4/9/2013	18	0.047	0.004	0.042	0.007	0.078	0.007	0.042	0.005
4/9/2013	19	0.032	0.005	0.034	0.005	0.037	0.005	0.029	0.003
4/9/2013	20	0.024	0.004	0.027	0.005	0.021	0.002	0.025	0.003
4/9/2013	21	0.026	0.004	0.031	0.006	0.024	0.004	0.028	0.003
4/9/2013	22	0.027	0.003	0.025	0.008	0.027	0.005	0.028	0.003
4/9/2013	23	0.020	0.002	0.068	0.009	0.048	0.003	0.018	0.005
4/10/2013	0	0.010	0.002	0.038	0.002	0.020	0.003	0.011	0.003
4/10/2013	1	0.010	0.001	0.016	0.002	0.010	0.003	0.012	0.004
4/10/2013	2	0.018	0.003	0.019	0.005	0.017	0.003	0.026	0.004
4/10/2013	3	0.016	0.004	0.020	0.006	0.015	0.005	0.019	0.003
4/10/2013	4	0.013	0.002	0.019	0.005	0.015	0.005	0.016	0.002
4/10/2013	5	0.014	0.002	0.057	0.004	0.011	0.003	0.007	0.003
4/10/2013	6	0.010	0.006	0.014	0.002	0.012	0.002	0.008	0.002
4/10/2013	7	0.008	0.004	0.018	-0.001	0.017	0.003	0.009	0.002
4/10/2013	8	0.007	0.000	0.008	0.002	0.009	0.002	0.008	0.002
4/10/2013	9	0.004	0.000	0.010	0.004	0.015	0.001	0.008	0.002
4/10/2013	10	0.004	-0.001	0.007	0.001	0.014	0.002	0.011	-0.015
4/10/2013	11	0.006	-0.002	0.005	0.002	0.046	0.002	0.011	-0.002
4/10/2013	12	0.007	-0.001	0.010	0.003	0.077	0.003	0.026	-0.002
4/10/2013	13	0.030	0.000	0.042	0.000	0.078	0.002	0.022	0.000
4/10/2013	14	0.008	0.000	0.014	0.000	0.027	0.001	0.008	0.001
4/10/2013	15	0.007	0.001	0.013	0.000	0.007	0.002	0.008	0.001
4/10/2013	16	0.010	0.003	0.021	0.001	0.019	0.001	0.006	0.001
4/10/2013	17	0.010	0.002	0.007	0.002	0.003	0.001	0.004	-0.001
4/10/2013	18	0.006	0.000	0.007	0.000	0.005	0.001	0.004	0.000
4/10/2013	19	0.006	0.001	0.007	0.001	0.008	0.002	0.006	0.002
4/10/2013	20	0.006	0.002	0.008	0.004	0.008	0.003	0.007	0.002
4/10/2013	21	0.006	0.002	0.010	0.005	0.007	0.001	0.006	0.001
4/10/2013	22	0.007	0.001	0.009	0.003	0.008	0.002	0.007	0.001
4/10/2013	23	0.009	0.000	0.007	0.002	0.009	0.002	0.006	0.002



DESERT SUNLIGHT SOLAR FARM

TABLE 3 - HOURLY BAM DATA

(Please refer to Table 3 cover page for additional details.)

All values are in units of milligrams per cubic meter.

Date	Hour	North Station		East Station		South Station		West Station	
		PM10	PM2.5	PM10	PM2.5	PM10	PM2.5	PM10	PM2.5
4/11/2013	0	0.011	0.002	0.008	0.002	0.008	0.001	0.008	0.002
4/11/2013	1	0.011	0.003	0.016	0.002	0.006	0.000	0.008	0.002
4/11/2013	2	0.010	0.001	0.012	0.004	0.006	0.000	0.006	0.000
4/11/2013	3	0.011	0.001	0.012	0.005	0.007	0.001	0.007	0.000
4/11/2013	4	0.012	0.001	0.011	0.004	0.009	0.001	0.007	0.001
4/11/2013	5	0.014	0.002	0.016	0.004	0.008	0.001	0.011	0.001
4/11/2013	6	0.014	0.004	0.011	0.005	0.009	0.000	0.012	0.003
4/11/2013	7	0.013	0.004	0.031	0.004	0.021	0.002	0.012	0.002
4/11/2013	8	0.012	0.001	0.026	0.005	0.021	0.005	0.014	0.000
4/11/2013	9	0.012	0.000	0.013	0.005	0.012	0.004	0.020	0.000
4/11/2013	10	0.019	0.002	0.034	0.001	0.017	0.000	-0.015	0.000
4/11/2013	11	0.024	0.001	0.045	-0.001	0.028	-0.001	0.023	0.000
4/11/2013	12	0.019	0.002	0.025	0.000	0.018	0.002	0.026	0.001
4/11/2013	13	0.020	0.001	0.023	0.001	0.044	0.004	0.019	0.005
4/11/2013	14	0.026	0.004	0.022	0.003	0.015	0.004	0.015	0.005
4/11/2013	15	0.013	0.006	0.037	0.005	0.016	0.005	0.014	0.003
4/11/2013	16	0.067	0.004	0.037	0.003	0.035	0.005	0.023	0.004
4/11/2013	17	0.021	0.005	0.050	0.006	0.033	0.005	0.017	0.002
4/11/2013	18	0.017	0.004	0.013	0.006	0.016	0.005	0.014	0.002
4/11/2013	19	0.016	0.002	0.016	0.003	0.015	0.005	0.016	0.005
4/11/2013	20	0.023	0.005	0.025	0.006	0.017	0.005	0.019	0.007
4/11/2013	21	0.048	0.007	0.045	0.009	0.040	0.005	0.052	0.007
4/11/2013	22	0.024	0.005	0.044	0.010	0.025	0.006	0.024	0.007
4/11/2013	23	0.027	0.003	0.024	0.007	0.031	0.003	0.028	0.006
4/12/2013	0	0.030	0.006	0.032	0.009	0.024	0.004	0.022	0.005
4/12/2013	1	0.985	0.006	0.022	0.008	0.013	0.004	0.016	0.005
4/12/2013	2	0.985	0.004	0.018	0.003	0.011	0.003	0.016	0.006
4/12/2013	3	0.985	0.005	0.013	0.005	0.017	0.005	0.018	0.007
4/12/2013	4	0.985	0.004	0.023	0.005	0.017	0.005	0.025	0.005
4/12/2013	5	0.985	0.005	0.021	0.003	0.017	0.006	0.027	0.002
4/12/2013	6	0.985	0.007	0.019	0.004	0.025	0.006	0.026	0.006
4/12/2013	7	0.985	0.007	0.021	0.006	0.026	0.007	0.020	0.007
4/12/2013	8	0.985	0.006	0.020	0.007	0.030	0.008	0.023	0.006
4/12/2013	9	0.985	0.006	0.018	0.004	0.018	0.007	0.028	0.006
4/12/2013	10	0.985	0.006	0.013	0.004	0.020	0.005	0.027	0.003
4/12/2013	11	0.985	0.006	0.019	0.006	0.040	0.006	0.025	0.004
4/12/2013	12	0.985	0.005	0.021	0.007	0.028	0.006	0.024	0.007
4/12/2013	13	0.985	0.006	0.022	0.007	0.024	0.005	0.023	0.006
4/12/2013	14	0.985	0.002	0.029	0.006	0.022	0.003	0.019	0.004
4/12/2013	15	0.020	0.003	0.018	0.005	0.017	0.004	0.023	0.002
4/12/2013	16	0.021	0.007	0.025	0.005	0.017	0.008	0.013	0.004
4/12/2013	17	0.013	0.006	0.014	0.004	0.013	0.006	0.017	0.005
4/12/2013	18	0.012	0.003	0.019	0.005	0.012	0.003	0.015	0.003
4/12/2013	19	0.017	0.003	0.020	0.005	0.016	0.004	0.016	0.004
4/12/2013	20	0.016	0.005	0.016	0.006	0.016	0.006	0.018	0.004
4/12/2013	21	0.018	0.006	0.017	0.006	0.016	0.006	0.017	0.002
4/12/2013	22	0.067	0.004	0.018	0.005	0.010	0.005	0.007	0.000
4/12/2013	23	0.011	0.004	0.014	0.005	0.017	0.004	0.009	0.001



DESERT SUNLIGHT SOLAR FARM

TABLE 3 - HOURLY BAM DATA

(Please refer to Table 3 cover page for additional details.)

All values are in units of milligrams per cubic meter.

Date	Hour	North Station		East Station		South Station		West Station	
		PM10	PM2.5	PM10	PM2.5	PM10	PM2.5	PM10	PM2.5
4/13/2013	0	0.011	0.003	0.015	0.006	0.014	0.003	0.013	0.003
4/13/2013	1	0.010	0.002	0.019	0.005	0.016	0.004	0.014	0.004
4/13/2013	2	0.011	0.004	0.016	0.001	0.015	0.004	0.015	0.003
4/13/2013	3	0.015	0.003	0.015	0.002	0.013	0.003	0.016	0.003
4/13/2013	4	0.017	0.003	0.014	0.008	0.011	0.004	0.015	0.003
4/13/2013	5	0.016	0.004	0.018	0.008	0.011	0.006	0.012	0.003
4/13/2013	6	0.018	0.005	0.019	0.006	0.018	0.006	0.012	0.005
4/13/2013	7	0.011	0.004	0.017	0.006	0.017	0.007	0.012	0.006
4/13/2013	8	0.011	0.004	0.011	0.006	0.014	0.006	0.017	0.005
4/13/2013	9	0.010	0.004	0.012	0.003	0.010	0.002	0.011	0.005
4/13/2013	10	0.018	0.006	0.013	0.003	0.010	0.004	0.018	0.004
4/13/2013	11	0.017	0.005	0.016	0.004	0.023	0.003	0.017	0.006
4/13/2013	12	0.015	0.004	0.031	0.005	0.018	0.002	0.014	0.005
4/13/2013	13	0.010	0.003	0.013	0.004	0.011	0.002	0.014	0.001
4/13/2013	14	0.028	0.002	0.038	0.005	0.027	0.003	0.022	0.002
4/13/2013	15	0.036	0.004	0.064	0.005	0.030	0.005	0.023	0.006
4/13/2013	16	0.062	0.005	0.289	0.027	0.068	0.006	0.030	0.006
4/13/2013	17	0.062	0.007	0.097	0.009	0.045	0.008	0.028	0.007
4/13/2013	18	0.019	0.007	0.030	0.009	0.021	0.008	0.018	0.007
4/13/2013	19	0.018	0.006	0.016	0.009	0.016	0.007	0.019	0.006
4/13/2013	20	0.024	0.005	0.027	0.009	0.022	0.007	0.027	0.007
4/13/2013	21	0.020	0.005	0.024	0.006	0.040	0.006	0.020	0.007
4/13/2013	22	0.013	0.005	0.018	0.006	0.031	0.006	0.016	0.006
4/13/2013	23	0.012	0.005	0.014	0.009	0.023	0.006	0.017	0.005
4/14/2013	0	0.013	0.005	0.019	0.008	0.014	0.005	0.016	0.003
4/14/2013	1	0.014	0.004	0.016	0.005	0.017	0.005	0.016	0.005
4/14/2013	2	0.013	0.005	0.014	0.004	0.016	0.004	0.014	0.006
4/14/2013	3	0.011	0.005	0.016	0.006	0.012	0.003	0.013	0.005
4/14/2013	4	0.012	0.005	0.017	0.007	0.021	0.006	0.016	0.004
4/14/2013	5	0.011	0.005	0.018	0.006	0.017	0.006	0.015	0.005
4/14/2013	6	0.011	0.007	0.019	0.006	0.011	0.006	0.014	0.006
4/14/2013	7	0.010	0.006	0.014	0.007	0.011	0.006	0.012	0.006
4/14/2013	8	0.012	0.003	0.014	0.007	0.020	0.006	0.016	0.006
4/14/2013	9	0.018	0.003	0.088	0.005	0.015	0.006	0.024	0.005
4/14/2013	10	0.037	0.004	0.021	0.004	0.017	0.006	0.022	0.006
4/14/2013	11	0.014	0.005	0.031	0.003	0.015	0.006	0.020	0.005
4/14/2013	12	0.017	0.004	0.019	0.003	0.017	0.008	0.020	0.002
4/14/2013	13	0.023	0.006	0.027	0.003	0.035	0.009	0.030	0.005
4/14/2013	14	0.032	0.007	0.032	0.005	0.032	0.009	0.030	0.005
4/14/2013	15	0.028	0.006	0.029	0.008	0.030	0.008	0.028	0.005
4/14/2013	16	0.042	0.004	0.029	0.006	0.022	0.006	0.028	0.006
4/14/2013	17	0.023	0.003	0.031	0.005	0.025	0.006	0.024	0.005
4/14/2013	18	0.039	0.005	0.044	0.007	0.059	0.007	0.039	0.005
4/14/2013	19	0.031	0.007	0.040	0.009	0.041	0.009	0.041	0.009
4/14/2013	20	0.036	0.008	0.045	0.011	0.040	0.012	0.040	0.009
4/14/2013	21	0.053	0.008	0.048	0.011	0.045	0.011	0.055	0.009
4/14/2013	22	0.037	0.009	0.057	0.009	0.047	0.009	0.038	0.012
4/14/2013	23	0.033	0.009	0.065	0.009	0.063	0.011	0.037	0.010



DESERT SUNLIGHT SOLAR FARM

TABLE 3 - HOURLY BAM DATA

(Please refer to Table 3 cover page for additional details.)

All values are in units of milligrams per cubic meter.

Date	Hour	North Station		East Station		South Station		West Station	
		PM10	PM2.5	PM10	PM2.5	PM10	PM2.5	PM10	PM2.5
4/15/2013	0	0.060	0.009	0.058	0.011	0.048	0.013	0.057	0.012
4/15/2013	1	0.077	0.012	0.098	0.016	0.096	0.011	0.084	0.015
4/15/2013	2	0.059	0.013	0.108	0.011	0.097	0.012	0.069	0.013
4/15/2013	3	0.062	0.015	0.064	0.011	0.060	0.011	0.069	0.011
4/15/2013	4	0.066	0.012	0.055	0.012	0.036	0.007	0.080	0.011
4/15/2013	5	0.059	0.011	0.048	0.010	0.040	0.007	0.069	0.016
4/15/2013	6	0.050	0.009	0.061	0.006	0.045	0.007	0.046	0.009
4/15/2013	7	0.041	0.009	0.054	0.007	0.124	0.010	0.049	0.009
4/15/2013	8	0.061	0.011	0.058	0.006	0.061	0.011	0.052	0.009
4/15/2013	9	0.092	0.010	0.071	0.007	0.098	0.009	0.142	0.015
4/15/2013	10	0.145	0.016	0.091	0.985	0.038	0.006	0.098	0.012
4/15/2013	11	0.099	0.013	0.985	0.020	0.066	0.005	0.068	0.010
4/15/2013	12	0.049	0.008	0.115	0.010	0.041	0.005	0.039	0.007
4/15/2013	13	0.048	0.006	0.055	0.008	0.052	0.006	0.048	0.003
4/15/2013	14	0.112	0.009	0.119	0.009	0.985	0.015	0.123	0.006
4/15/2013	15	0.240	0.022	0.190	0.017	0.272	0.019	0.168	0.015
4/15/2013	16	0.159	0.019	0.234	0.020	0.216	0.018	0.159	0.019
4/15/2013	17	0.121	0.019	0.238	0.026	0.171	0.020	0.128	0.018
4/15/2013	18	0.128	0.017	0.344	0.035	0.351	0.027	0.150	0.012
4/15/2013	19	0.113	0.013	0.233	0.023	0.214	0.024	0.120	0.017
4/15/2013	20	0.109	0.014	0.173	0.019	0.163	0.024	0.116	0.019
4/15/2013	21	0.164	0.022	0.187	0.021	0.178	0.021	0.162	0.014
4/15/2013	22	0.107	0.018	0.143	0.018	0.120	0.015	0.102	0.012
4/15/2013	23	0.072	0.010	0.072	0.013	0.065	0.012	0.060	0.011
4/16/2013	0	0.047	0.010	0.052	0.014	0.046	0.012	0.048	0.011
4/16/2013	1	0.045	0.009	0.051	0.011	0.041	0.013	0.042	0.010
4/16/2013	2	0.038	0.009	0.050	0.009	0.042	0.011	0.037	0.009
4/16/2013	3	0.034	0.011	0.053	0.009	0.047	0.009	0.036	0.010
4/16/2013	4	0.032	0.010	0.044	0.010	0.045	0.010	0.032	0.011
4/16/2013	5	0.043	0.010	0.055	0.011	0.048	0.010	0.041	0.012
4/16/2013	6	0.039	0.009	0.057	0.012	0.055	0.010	0.040	0.009
4/16/2013	7	0.055	0.007	0.048	0.016	0.058	0.011	0.056	0.007
4/16/2013	8	0.055	0.008	0.069	0.010	0.059	0.008	0.048	0.008
4/16/2013	9	0.036	0.006	0.039	0.007	0.042	0.005	0.040	0.007
4/16/2013	10	0.049	0.004	0.049	0.006	0.057	0.006	-0.015	-0.015
4/16/2013	11	0.029	0.007	0.034	0.004	0.034	0.007	0.034	0.006
4/16/2013	12	0.050	0.009	0.057	0.003	0.051	0.007	0.059	0.007
4/16/2013	13	0.060	0.016	0.067	0.006	0.072	0.007	0.065	0.009
4/16/2013	14	0.073	0.011	0.073	0.009	0.071	0.012	0.078	0.012
4/16/2013	15	0.055	0.013	0.065	0.009	0.071	0.012	0.066	0.013
4/16/2013	16	0.049	0.010	0.050	0.007	0.095	0.009	0.046	0.010
4/16/2013	17	0.059	0.007	0.057	0.007	0.063	0.008	0.064	0.009
4/16/2013	18	0.078	0.011	0.079	0.009	0.075	0.008	0.085	0.010
4/16/2013	19	0.049	0.010	0.054	0.010	0.050	0.008	0.043	0.009
4/16/2013	20	0.047	0.007	0.050	0.008	0.069	0.006	0.055	0.008
4/16/2013	21	0.194	0.010	0.101	0.011	0.422	0.025	0.304	0.011
4/16/2013	22	0.225	0.013	0.208	0.013	0.450	0.027	0.195	0.012
4/16/2013	23	0.204	0.012	0.125	0.013	0.665	0.034	0.059	0.008



DESERT SUNLIGHT SOLAR FARM

TABLE 3 - HOURLY BAM DATA

(Please refer to Table 3 cover page for additional details.)

All values are in units of milligrams per cubic meter.

Date	Hour	North Station		East Station		South Station		West Station	
		PM10	PM2.5	PM10	PM2.5	PM10	PM2.5	PM10	PM2.5
4/17/2013	0	0.172	0.012	0.151	0.013	0.166	0.011	0.094	0.006
4/17/2013	1	0.046	0.010	0.074	0.011	0.297	0.017	0.040	0.005
4/17/2013	2	0.025	0.006	0.037	0.009	0.115	0.008	0.026	0.005
4/17/2013	3	0.013	0.004	0.021	0.003	0.021	0.005	0.021	0.004
4/17/2013	4	0.017	0.005	0.018	0.001	0.041	0.004	0.021	0.003
4/17/2013	5	0.040	0.006	0.024	0.003	0.059	0.006	0.064	0.004
4/17/2013	6	0.014	0.005	0.019	0.004	0.041	0.008	0.020	0.006
4/17/2013	7	0.012	0.004	0.014	0.003	0.020	0.006	0.014	0.006
4/17/2013	8	0.010	0.004	0.028	0.005	0.026	0.004	0.015	0.007
4/17/2013	9	0.010	0.003	0.016	0.005	0.027	0.005	0.017	0.006
4/17/2013	10	0.015	0.002	0.034	0.003	0.085	0.005	0.016	0.003
4/17/2013	11	0.022	0.002	0.057	0.005	0.078	0.004	0.012	0.003
4/17/2013	12	0.031	0.001	0.070	0.004	0.124	0.005	0.038	0.004
4/17/2013	13	0.044	0.005	0.068	0.004	0.174	0.007	0.057	0.004
4/17/2013	14	0.031	0.007	0.036	0.008	0.099	0.007	0.026	0.001
4/17/2013	15	0.019	0.003	0.047	0.006	0.123	0.006	0.021	0.001
4/17/2013	16	0.027	0.002	0.029	0.003	0.095	0.006	0.021	0.004
4/17/2013	17	0.013	0.003	0.017	0.004	0.040	0.006	0.019	0.003
4/17/2013	18	0.018	0.004	0.018	0.002	0.030	0.006	0.018	0.003
4/17/2013	19	0.017	0.005	0.021	0.002	0.028	0.004	0.020	0.003
4/17/2013	20	0.018	0.004	0.021	0.004	0.021	0.003	0.021	0.003
4/17/2013	21	0.013	0.003	0.012	0.005	0.014	0.004	0.013	0.004
4/17/2013	22	0.011	0.006	0.015	0.006	0.012	0.006	0.010	0.004
4/17/2013	23	0.009	0.007	0.012	0.006	0.011	0.006	0.010	0.004
4/18/2013	0	0.007	0.005	0.009	0.004	0.011	0.004	0.010	0.006
4/18/2013	1	0.008	0.005	0.008	0.004	0.008	0.002	0.008	0.006
4/18/2013	2	0.019	0.003	0.012	0.004	0.008	0.003	0.009	0.004
4/18/2013	3	0.010	0.002	0.009	0.005	0.010	0.004	0.009	0.002
4/18/2013	4	0.005	0.002	0.007	0.005	0.010	0.006	0.008	0.001
4/18/2013	5	0.003	0.002	0.008	0.003	0.009	0.005	0.009	0.003
4/18/2013	6	0.009	0.004	0.006	0.004	0.011	0.006	0.013	0.006
4/18/2013	7	0.012	0.004	0.038	0.007	0.026	0.006	0.020	0.006
4/18/2013	8	0.010	0.004	0.009	0.007	0.018	0.004	0.012	0.004
4/18/2013	9	0.007	0.001	0.005	0.003	0.004	0.002	0.102	0.002
4/18/2013	10	0.007	0.985	0.005	0.002	0.028	0.002	0.008	0.001
4/18/2013	11	0.985	-0.001	0.009	0.002	0.010	0.003	0.009	0.001
4/18/2013	12	0.012	0.000	0.010	0.001	0.053	0.001	0.017	0.002
4/18/2013	13	0.013	0.004	0.008	0.003	0.033	0.002	0.013	0.002
4/18/2013	14	0.010	0.003	0.008	0.003	0.043	0.004	0.013	0.002
4/18/2013	15	0.008	0.003	0.010	0.003	0.017	0.002	0.011	0.002
4/18/2013	16	0.008	0.004	0.010	0.004	0.015	0.001	0.027	0.002
4/18/2013	17	0.008	0.001	0.010	0.003	0.012	0.000	0.007	0.003
4/18/2013	18	0.007	0.001	0.008	0.004	0.021	0.001	0.009	0.001
4/18/2013	19	0.007	0.003	0.007	0.004	0.006	0.002	0.009	0.001
4/18/2013	20	0.006	0.003	0.007	0.002	0.008	0.004	0.006	0.003
4/18/2013	21	0.005	0.001	0.008	0.004	0.009	0.005	0.007	0.004
4/18/2013	22	0.004	0.002	0.009	0.003	0.007	0.006	0.009	0.002
4/18/2013	23	0.005	0.006	0.008	0.005	0.004	0.004	0.008	0.000



DESERT SUNLIGHT SOLAR FARM

TABLE 3 - HOURLY BAM DATA

(Please refer to Table 3 cover page for additional details.)

All values are in units of milligrams per cubic meter.

Date	Hour	North Station		East Station		South Station		West Station	
		PM10	PM2.5	PM10	PM2.5	PM10	PM2.5	PM10	PM2.5
4/19/2013	0	0.005	0.006	0.009	0.006	0.005	0.002	0.009	0.002
4/19/2013	1	0.005	0.004	0.011	0.004	0.006	0.002	0.008	0.002
4/19/2013	2	0.005	0.001	0.012	0.002	0.007	0.002	0.006	0.002
4/19/2013	3	0.007	0.000	0.009	0.002	0.010	0.002	0.008	0.001
4/19/2013	4	0.006	0.000	0.008	0.004	0.010	0.001	0.008	0.000
4/19/2013	5	0.005	0.001	0.009	0.006	0.009	0.002	0.009	0.001
4/19/2013	6	0.007	0.004	0.010	0.007	0.018	0.005	0.009	0.002
4/19/2013	7	0.007	0.005	0.010	0.004	0.012	0.003	0.006	0.005
4/19/2013	8	0.006	0.004	0.017	0.003	0.010	0.000	0.008	0.003
4/19/2013	9	0.007	0.004	0.008	0.003	0.006	0.002	0.010	-0.001
4/19/2013	10	0.007	0.003	0.008	0.001	0.004	0.000	0.007	-0.001
4/19/2013	11	0.004	0.003	0.006	0.001	0.005	-0.001	0.005	0.001
4/19/2013	12	0.003	0.001	0.002	0.002	0.005	0.002	0.004	0.001
4/19/2013	13	0.003	0.001	0.005	0.003	0.005	0.001	0.004	0.003
4/19/2013	14	0.004	0.001	0.007	0.003	0.003	0.000	0.002	0.003
4/19/2013	15	0.004	0.000	0.004	0.003	0.002	0.001	0.004	0.001
4/19/2013	16	0.001	0.000	0.004	0.003	0.003	0.001	0.004	0.001
4/19/2013	17	0.001	0.001	0.004	0.003	0.003	0.000	0.004	0.002
4/19/2013	18	0.003	0.002	0.006	0.003	0.003	0.001	0.005	0.004
4/19/2013	19	0.003	0.000	0.008	0.003	0.005	0.001	0.007	0.004
4/19/2013	20	0.004	0.002	0.007	0.005	0.007	0.000	0.005	0.004
4/19/2013	21	0.016	0.005	0.006	0.005	0.007	0.003	0.003	0.004
4/19/2013	22	0.005	0.003	0.007	0.004	0.006	0.002	0.006	0.001
4/19/2013	23	0.005	0.000	0.007	0.005	0.007	0.000	0.003	0.001
4/20/2013	0	0.006	0.001	0.009	0.005	0.008	0.001	0.003	0.003
4/20/2013	1	0.003	0.003	0.010	0.004	0.007	0.004	0.004	0.003
4/20/2013	2	0.005	0.003	0.007	0.004	0.008	0.004	0.003	0.004
4/20/2013	3	0.007	0.004	0.007	0.004	0.009	0.001	0.004	0.004
4/20/2013	4	0.006	0.003	0.012	0.003	0.009	0.001	0.008	0.002
4/20/2013	5	0.032	0.004	0.022	0.004	0.019	0.001	0.019	0.002
4/20/2013	6	0.019	0.007	0.029	0.006	0.026	0.003	0.023	0.005
4/20/2013	7	0.015	0.006	0.025	0.006	0.027	0.006	0.023	0.007
4/20/2013	8	0.014	0.005	0.028	0.005	0.020	0.006	0.022	0.008
4/20/2013	9	0.023	0.006	0.024	0.007	0.030	0.005	0.022	0.006
4/20/2013	10	0.027	0.006	0.031	0.007	0.037	0.008	0.027	0.005
4/20/2013	11	0.030	0.006	0.029	0.006	0.033	0.006	0.027	0.006
4/20/2013	12	0.019	0.007	0.021	0.006	0.029	0.006	0.024	0.006
4/20/2013	13	0.017	0.006	0.014	0.003	0.022	0.008	0.023	0.003
4/20/2013	14	0.013	0.005	0.014	0.002	0.016	0.005	0.015	-0.001
4/20/2013	15	0.011	0.003	0.013	0.001	0.011	0.005	0.013	0.000
4/20/2013	16	0.011	0.002	0.012	0.001	0.013	0.006	0.013	0.001
4/20/2013	17	0.016	0.004	0.017	0.004	0.014	0.004	0.013	0.003
4/20/2013	18	0.007	0.004	0.017	0.006	0.013	0.003	0.012	0.003
4/20/2013	19	0.010	0.004	0.019	0.005	0.013	0.002	0.016	0.004
4/20/2013	20	0.014	0.003	0.015	0.005	0.012	0.003	0.012	0.004
4/20/2013	21	0.013	0.004	0.017	0.007	0.016	0.003	0.016	0.003
4/20/2013	22	0.026	0.005	0.020	0.007	0.016	0.004	0.017	0.006
4/20/2013	23	0.017	0.006	0.017	0.006	0.014	0.005	0.016	0.004



DESERT SUNLIGHT SOLAR FARM

TABLE 3 - HOURLY BAM DATA

(Please refer to Table 3 cover page for additional details.)

All values are in units of milligrams per cubic meter.

Date	Hour	North Station		East Station		South Station		West Station	
		PM10	PM2.5	PM10	PM2.5	PM10	PM2.5	PM10	PM2.5
4/21/2013	0	0.015	0.006	0.015	0.007	0.017	0.005	0.013	0.002
4/21/2013	1	0.011	0.006	0.019	0.007	0.017	0.006	0.019	0.005
4/21/2013	2	0.017	0.007	0.019	0.007	0.017	0.005	0.014	0.006
4/21/2013	3	0.009	0.006	0.018	0.007	0.015	0.001	0.018	0.002
4/21/2013	4	0.017	0.002	0.018	0.005	0.015	0.004	0.018	0.004
4/21/2013	5	0.014	0.005	0.017	0.003	0.016	0.008	0.016	0.005
4/21/2013	6	0.017	0.007	0.017	0.004	0.013	0.007	0.017	0.003
4/21/2013	7	0.018	0.005	0.017	0.005	0.041	0.006	0.022	0.002
4/21/2013	8	0.020	0.006	0.020	0.005	0.022	0.007	0.018	0.001
4/21/2013	9	0.017	0.003	0.023	0.004	0.028	0.007	0.017	0.004
4/21/2013	10	0.013	0.004	0.016	0.005	0.013	0.006	0.018	0.006
4/21/2013	11	0.013	0.006	0.016	0.005	0.016	0.006	0.014	0.006
4/21/2013	12	0.017	0.005	0.014	0.004	0.014	0.004	0.017	0.004
4/21/2013	13	0.015	0.005	0.017	0.005	0.034	0.004	0.012	0.003
4/21/2013	14	0.019	0.005	0.013	0.006	0.016	0.005	0.018	0.003
4/21/2013	15	0.018	0.005	0.022	0.005	0.023	0.005	0.022	0.003
4/21/2013	16	0.017	0.004	0.023	0.007	0.025	0.005	0.019	0.006
4/21/2013	17	0.034	0.005	0.021	0.007	0.017	0.005	0.018	0.007
4/21/2013	18	0.024	0.005	0.023	0.005	0.018	0.007	0.022	0.007
4/21/2013	19	0.018	0.006	0.027	0.006	0.017	0.006	0.020	0.005
4/21/2013	20	0.035	0.008	0.016	0.009	0.015	0.008	0.023	0.004
4/21/2013	21	0.016	0.007	0.017	0.006	0.020	0.009	0.018	0.005
4/21/2013	22	0.025	0.006	0.028	0.005	0.038	0.006	0.027	0.006
4/21/2013	23	0.023	0.006	0.023	0.007	0.026	0.006	0.017	0.005
4/22/2013	0	0.015	0.006	0.015	0.007	0.012	0.007	0.012	0.004
4/22/2013	1	0.017	0.006	0.014	0.006	0.011	0.008	0.011	0.007
4/22/2013	2	0.012	0.006	0.016	0.005	0.019	0.004	0.015	0.007
4/22/2013	3	0.013	0.004	0.019	0.004	0.014	0.004	0.011	0.004
4/22/2013	4	0.016	0.005	0.022	0.002	0.015	0.006	0.017	0.003
4/22/2013	5	0.018	0.006	0.018	0.003	0.024	0.008	0.016	0.004
4/22/2013	6	0.016	0.005	0.021	0.008	0.021	0.007	0.015	0.004
4/22/2013	7	0.017	0.005	0.045	0.008	0.048	0.006	0.025	0.005
4/22/2013	8	0.019	0.007	0.044	0.008	0.034	0.005	0.042	0.005
4/22/2013	9	0.015	0.007	0.027	0.007	0.016	0.004	0.023	0.004
4/22/2013	10	0.014	0.003	0.019	0.005	0.038	0.005	0.024	0.005
4/22/2013	11	0.014	0.002	0.018	0.005	0.027	0.004	0.019	0.007
4/22/2013	12	0.019	0.007	0.021	0.006	0.024	0.007	0.025	0.007
4/22/2013	13	0.020	0.008	0.020	0.006	0.030	0.009	0.019	0.007
4/22/2013	14	0.011	0.006	0.024	0.005	0.040	0.007	0.017	0.008
4/22/2013	15	0.012	0.004	0.019	0.007	0.034	0.006	0.021	0.006
4/22/2013	16	0.015	0.003	0.090	0.010	0.023	0.004	0.011	0.002
4/22/2013	17	0.018	0.006	0.020	0.011	0.030	0.005	0.018	0.001
4/22/2013	18	0.033	0.005	0.037	0.009	0.027	0.006	0.029	0.007
4/22/2013	19	0.020	0.004	0.025	0.007	0.019	0.006	0.019	0.008
4/22/2013	20	0.023	0.006	0.057	0.009	0.039	0.007	0.026	0.006
4/22/2013	21	0.038	0.008	0.043	0.012	0.044	0.008	0.036	0.010
4/22/2013	22	0.036	0.010	0.051	0.010	0.046	0.007	0.041	0.010
4/22/2013	23	0.036	0.012	0.047	0.009	0.045	0.008	0.038	0.012



DESERT SUNLIGHT SOLAR FARM

TABLE 3 - HOURLY BAM DATA

(Please refer to Table 3 cover page for additional details.)

All values are in units of milligrams per cubic meter.

Date	Hour	North Station		East Station		South Station		West Station	
		PM10	PM2.5	PM10	PM2.5	PM10	PM2.5	PM10	PM2.5
4/23/2013	0	0.035	0.011	0.035	0.011	0.041	0.009	0.033	0.012
4/23/2013	1	0.031	0.010	0.033	0.014	0.042	0.011	0.034	0.009
4/23/2013	2	0.023	0.010	0.039	0.012	0.031	0.013	0.030	0.010
4/23/2013	3	0.026	0.010	0.033	0.011	0.032	0.012	0.023	0.011
4/23/2013	4	0.032	0.011	0.032	0.010	0.025	0.009	0.024	0.010
4/23/2013	5	0.030	0.014	0.031	0.011	0.027	0.010	0.031	0.011
4/23/2013	6	0.033	0.013	0.054	0.013	0.058	0.011	0.038	0.012
4/23/2013	7	0.085	0.011	0.985	0.078	0.338	0.025	0.107	0.010
4/23/2013	8	0.057	0.010	0.108	0.013	0.087	0.011	0.067	0.011
4/23/2013	9	0.079	0.011	0.071	0.011	0.073	0.010	0.087	0.011
4/23/2013	10	0.112	0.017	0.120	0.020	0.133	0.012	0.115	0.015
4/23/2013	11	0.083	0.016	0.075	0.013	0.098	0.014	0.089	0.017
4/23/2013	12	0.058	0.008	0.057	0.011	0.067	0.014	0.055	0.008
4/23/2013	13	0.030	0.008	0.046	0.007	0.038	0.011	0.033	0.007
4/23/2013	14	0.031	0.006	0.035	0.005	0.036	0.007	0.039	0.009
4/23/2013	15	0.027	0.005	0.038	0.006	0.049	0.006	0.028	0.007
4/23/2013	16	0.021	0.006	0.020	0.006	0.037	0.005	0.024	0.003
4/23/2013	17	0.026	0.007	0.020	0.004	0.027	0.007	0.025	0.006
4/23/2013	18	0.020	0.006	0.021	0.004	0.013	0.006	0.025	0.008
4/23/2013	19	0.009	0.005	0.065	0.006	0.019	0.004	0.011	0.006
4/23/2013	20	0.011	0.002	0.022	0.005	0.013	0.003	0.010	0.005
4/23/2013	21	0.010	0.003	0.023	0.002	0.011	0.005	0.008	0.005
4/23/2013	22	0.007	0.002	0.014	0.002	0.020	0.005	0.007	0.005
4/23/2013	23	0.009	0.001	0.014	0.004	0.010	0.003	0.007	0.003
4/24/2013	0	0.022	0.002	0.013	0.005	0.010	0.005	0.017	0.005
4/24/2013	1	0.011	0.002	0.017	0.005	0.012	0.003	0.013	0.004
4/24/2013	2	0.011	0.004	0.015	0.006	0.009	0.002	0.012	0.000
4/24/2013	3	0.008	0.003	0.015	0.006	0.007	0.002	0.016	0.002
4/24/2013	4	0.017	0.004	0.013	0.006	0.011	0.001	0.010	0.003
4/24/2013	5	0.006	0.005	0.010	0.006	0.014	0.004	0.012	0.004
4/24/2013	6	0.007	0.003	0.016	0.006	0.016	0.005	0.015	0.007
4/24/2013	7	0.010	0.004	0.030	0.007	0.019	0.005	0.018	0.005
4/24/2013	8	0.017	0.006	0.016	0.006	0.027	0.007	0.016	0.004
4/24/2013	9	0.011	0.005	0.009	0.001	0.044	0.005	0.010	0.002
4/24/2013	10	0.009	0.001	0.011	0.002	0.016	0.002	0.016	0.000
4/24/2013	11	0.009	0.002	0.013	0.003	0.008	0.002	0.010	-0.001
4/24/2013	12	0.010	0.002	0.009	0.001	0.038	0.002	0.009	0.000
4/24/2013	13	0.011	0.000	0.015	0.003	0.033	0.002	0.009	0.002
4/24/2013	14	0.013	0.001	0.020	0.003	0.022	0.003	0.012	0.004
4/24/2013	15	0.014	0.002	0.020	0.002	0.051	0.005	0.018	0.005
4/24/2013	16	0.020	0.001	0.019	0.004	0.043	0.006	0.019	0.005
4/24/2013	17	0.024	0.003	0.032	0.006	0.057	0.005	0.029	0.007
4/24/2013	18	0.032	0.008	0.036	0.008	0.035	0.007	0.036	0.008
4/24/2013	19	0.036	0.009	0.032	0.008	0.035	0.008	0.034	0.007
4/24/2013	20	0.025	0.006	0.028	0.008	0.039	0.009	0.032	0.006
4/24/2013	21	0.027	0.006	0.032	0.009	0.026	0.007	0.033	0.007
4/24/2013	22	0.050	0.010	0.048	0.009	0.049	0.007	0.053	0.007
4/24/2013	23	0.022	0.008	0.026	0.008	0.026	0.010	0.021	0.006



DESERT SUNLIGHT SOLAR FARM

TABLE 3 - HOURLY BAM DATA

(Please refer to Table 3 cover page for additional details.)

All values are in units of milligrams per cubic meter.

Date	Hour	North Station		East Station		South Station		West Station	
		PM10	PM2.5	PM10	PM2.5	PM10	PM2.5	PM10	PM2.5
4/25/2013	0	0.024	0.007	0.023	0.006	0.023	0.010	0.027	0.005
4/25/2013	1	0.021	0.009	0.018	0.006	0.022	0.008	0.024	0.006
4/25/2013	2	0.023	0.009	0.026	0.007	0.017	0.005	0.023	0.007
4/25/2013	3	0.019	0.009	0.019	0.008	0.019	0.006	0.023	0.007
4/25/2013	4	0.023	0.007	0.027	0.009	0.028	0.007	0.028	0.006
4/25/2013	5	0.025	0.006	0.033	0.011	0.026	0.008	0.032	0.005
4/25/2013	6	0.027	0.009	0.041	0.010	0.037	0.010	0.031	0.007
4/25/2013	7	0.027	0.012	0.112	0.016	0.040	0.012	0.039	0.010
4/25/2013	8	0.021	0.009	0.049	0.010	0.036	0.009	0.022	0.007
4/25/2013	9	0.076	0.017	0.080	0.012	0.079	0.029	0.062	0.007
4/25/2013	10	0.066	0.015	0.073	0.014	0.069	0.016	-0.015	0.012
4/25/2013	11	0.051	0.010	0.066	0.012	0.057	0.013	0.048	0.013
4/25/2013	12	0.036	0.011	0.052	0.010	0.060	0.012	0.041	0.011
4/25/2013	13	0.029	0.011	0.030	0.010	0.038	0.010	0.031	0.008
4/25/2013	14	0.016	0.006	0.025	0.007	0.053	0.008	0.022	0.008
4/25/2013	15	0.017	0.004	0.020	0.006	0.021	0.009	0.021	0.005
4/25/2013	16	0.018	0.006	0.014	0.007	0.029	0.009	0.020	0.004
4/25/2013	17	0.012	0.006	0.026	0.007	0.047	0.006	0.017	0.004
4/25/2013	18	0.048	0.007	0.037	0.009	0.044	0.008	0.046	0.006
4/25/2013	19	0.038	0.007	0.042	0.012	0.037	0.016	0.036	0.009
4/25/2013	20	0.021	0.006	0.026	0.011	0.026	0.012	0.022	0.008
4/25/2013	21	0.019	0.007	0.025	0.009	0.021	0.009	0.020	0.008
4/25/2013	22	0.020	0.007	0.024	0.012	0.020	0.007	0.021	0.007
4/25/2013	23	0.017	0.007	0.028	0.009	0.025	0.006	0.019	0.008
4/26/2013	0	0.020	0.009	0.027	0.008	0.026	0.007	0.020	0.010
4/26/2013	1	0.022	0.009	0.030	0.017	0.027	0.008	0.023	0.010
4/26/2013	2	0.020	0.009	0.028	0.014	0.024	0.006	0.024	0.009
4/26/2013	3	0.025	0.009	0.028	0.013	0.026	0.007	0.024	0.007
4/26/2013	4	0.027	0.011	0.033	0.012	0.027	0.008	0.021	0.006
4/26/2013	5	0.024	0.011	0.031	0.011	0.022	0.009	0.027	0.006
4/26/2013	6	0.032	0.010	0.034	0.011	0.027	0.010	0.027	0.008
4/26/2013	7	0.027	0.011	0.033	0.012	0.052	0.011	0.027	0.009
4/26/2013	8	0.027	0.008	0.026	0.011	0.032	0.010	0.027	0.009
4/26/2013	9	0.023	0.007	0.026	0.010	0.032	0.010	0.027	0.009
4/26/2013	10	0.019	0.007	0.031	0.008	0.020	0.012	0.027	0.007
4/26/2013	11	0.022	0.006	0.019	0.007	0.024	0.009	0.024	0.006
4/26/2013	12	0.019	0.006	0.022	0.007	0.036	0.007	0.019	0.009
4/26/2013	13	0.017	0.007	0.025	0.009	0.027	0.008	0.020	0.008
4/26/2013	14	0.023	0.008	0.026	0.016	0.023	0.008	0.024	0.008
4/26/2013	15	0.017	0.006	0.020	0.009	0.029	0.010	0.024	0.007
4/26/2013	16	0.015	0.004	0.015	0.009	0.017	0.011	0.021	0.007
4/26/2013	17	0.014	0.007	0.019	0.010	0.024	0.007	0.017	0.007
4/26/2013	18	0.016	0.009	0.020	0.012	0.018	0.007	0.020	0.006
4/26/2013	19	0.017	0.006	0.026	0.012	0.023	0.007	0.018	0.006
4/26/2013	20	0.021	0.005	0.022	0.012	0.019	0.007	0.017	0.006
4/26/2013	21	0.020	0.008	0.027	0.010	0.021	0.008	0.022	0.006
4/26/2013	22	0.012	0.010	0.027	0.010	0.023	0.008	0.021	0.008
4/26/2013	23	0.019	0.007	0.022	0.011	0.024	0.008	0.019	0.008



DESERT SUNLIGHT SOLAR FARM

TABLE 3 - HOURLY BAM DATA

(Please refer to Table 3 cover page for additional details.)

All values are in units of milligrams per cubic meter.

Date	Hour	North Station		East Station		South Station		West Station	
		PM10	PM2.5	PM10	PM2.5	PM10	PM2.5	PM10	PM2.5
4/27/2013	0	0.025	0.006	0.023	0.009	0.023	0.007	0.026	0.007
4/27/2013	1	0.013	0.008	0.022	0.008	0.018	0.007	0.018	0.006
4/27/2013	2	0.021	0.007	0.023	0.008	0.021	0.007	0.019	0.004
4/27/2013	3	0.024	0.007	0.022	0.007	0.021	0.008	0.023	0.005
4/27/2013	4	0.025	0.009	0.028	0.006	0.027	0.010	0.026	0.007
4/27/2013	5	0.025	0.010	0.027	0.015	0.028	0.009	0.031	0.009
4/27/2013	6	0.028	0.010	0.028	0.010	0.029	0.009	0.028	0.008
4/27/2013	7	0.029	0.011	0.029	0.010	0.027	0.010	0.024	0.007
4/27/2013	8	0.032	0.009	0.032	0.009	0.029	0.010	0.024	0.007
4/27/2013	9	0.027	0.007	0.024	0.009	0.028	0.008	0.025	0.008
4/27/2013	10	0.019	0.008	0.022	0.009	0.023	0.006	0.027	0.007
4/27/2013	11	0.019	0.008	0.022	0.007	0.020	0.007	0.020	0.006
4/27/2013	12	0.019	0.007	0.023	0.006	0.025	0.008	0.018	0.005
4/27/2013	13	0.017	0.006	0.024	0.005	0.016	0.008	0.017	0.005
4/27/2013	14	0.014	0.004	0.014	0.005	0.016	0.009	0.013	0.006
4/27/2013	15	0.012	0.000	0.016	0.004	0.011	0.004	0.012	0.005
4/27/2013	16	0.015	0.002	0.011	0.004	0.016	0.001	0.021	0.003
4/27/2013	17	0.014	0.006	0.050	0.006	0.015	0.005	0.011	0.004
4/27/2013	18	0.018	0.005	0.017	0.007	0.012	0.006	0.011	0.005
4/27/2013	19	0.015	0.006	0.011	0.006	0.013	0.005	0.016	0.006
4/27/2013	20	0.015	0.007	0.016	0.007	0.017	0.007	0.014	0.006
4/27/2013	21	0.023	0.006	0.010	0.008	0.013	0.008	0.014	0.006
4/27/2013	22	0.027	0.009	0.020	0.008	0.014	0.006	0.022	0.008
4/27/2013	23	0.013	0.008	0.021	0.007	0.014	0.006	0.017	0.006
4/28/2013	0	0.013	0.007	0.021	0.006	0.019	0.005	0.015	0.005
4/28/2013	1	0.020	0.006	0.017	0.007	0.018	0.005	0.014	0.008
4/28/2013	2	0.025	0.008	0.029	0.009	0.022	0.006	0.021	0.008
4/28/2013	3	0.035	0.008	0.031	0.010	0.031	0.007	0.031	0.008
4/28/2013	4	0.029	0.009	0.036	0.013	0.031	0.010	0.031	0.011
4/28/2013	5	0.029	0.011	0.028	0.013	0.028	0.011	0.028	0.013
4/28/2013	6	0.025	0.009	0.027	0.012	0.023	0.010	0.022	0.011
4/28/2013	7	0.024	0.009	0.028	0.013	0.027	0.010	0.025	0.010
4/28/2013	8	0.023	0.011	0.024	0.012	0.026	0.009	0.020	0.009
4/28/2013	9	0.025	0.010	0.025	0.011	0.024	0.008	0.021	0.008
4/28/2013	10	0.019	0.005	0.023	0.013	0.025	0.009	0.026	0.009
4/28/2013	11	0.022	0.008	0.020	0.010	0.023	0.009	0.022	0.010
4/28/2013	12	0.016	0.010	0.020	0.009	0.020	0.010	0.021	0.008
4/28/2013	13	0.015	0.007	0.016	0.009	0.016	0.010	0.016	0.008
4/28/2013	14	0.014	0.006	0.010	0.007	0.015	0.008	0.012	0.026
4/28/2013	15	0.011	0.005	0.010	0.007	0.013	0.008	0.015	0.019
4/28/2013	16	0.009	0.005	0.010	0.007	0.012	0.005	0.019	0.009
4/28/2013	17	0.010	0.005	0.009	0.010	0.013	0.006	0.011	0.008
4/28/2013	18	0.012	0.006	0.020	0.008	0.011	0.006	0.011	0.007
4/28/2013	19	0.018	0.006	0.012	0.005	0.010	0.004	0.018	0.007
4/28/2013	20	0.012	0.005	0.012	0.008	0.012	0.004	0.023	0.007
4/28/2013	21	0.024	0.005	0.019	0.009	0.013	0.007	0.012	0.006
4/28/2013	22	0.009	0.005	0.013	0.007	0.014	0.007	0.015	0.006
4/28/2013	23	0.016	0.006	0.017	0.006	0.016	0.007	0.013	0.006



DESERT SUNLIGHT SOLAR FARM

TABLE 3 - HOURLY BAM DATA

(Please refer to Table 3 cover page for additional details.)

All values are in units of milligrams per cubic meter.

Date	Hour	North Station		East Station		South Station		West Station	
		PM10	PM2.5	PM10	PM2.5	PM10	PM2.5	PM10	PM2.5
4/29/2013	0	0.018	0.008	0.020	0.007	0.019	0.008	0.018	0.006
4/29/2013	1	0.021	0.007	0.020	0.006	0.018	0.006	0.018	0.006
4/29/2013	2	0.027	0.006	0.029	0.007	0.034	0.007	0.028	0.009
4/29/2013	3	0.027	0.011	0.029	0.011	0.035	0.010	0.026	0.013
4/29/2013	4	0.027	0.012	0.031	0.012	0.028	0.011	0.028	0.011
4/29/2013	5	0.026	0.010	0.026	0.011	0.029	0.012	0.022	0.010
4/29/2013	6	0.025	0.010	0.029	0.010	0.024	0.012	0.025	0.009
4/29/2013	7	0.025	0.012	0.025	0.009	0.050	0.012	0.061	0.010
4/29/2013	8	0.027	0.013	0.027	0.010	0.051	0.012	0.025	0.011
4/29/2013	9	0.020	0.010	0.027	0.013	0.040	0.009	0.019	0.008
4/29/2013	10	0.016	0.009	0.024	0.011	0.038	0.008	0.018	0.007
4/29/2013	11	0.017	0.007	0.031	0.008	0.026	0.008	0.022	0.009
4/29/2013	12	0.016	0.005	0.014	0.006	0.016	0.007	0.018	0.009
4/29/2013	13	0.013	0.006	0.019	0.006	0.021	0.009	0.016	0.007
4/29/2013	14	0.013	0.008	0.016	0.007	0.030	0.010	0.013	0.005
4/29/2013	15	0.024	0.007	0.033	0.007	0.024	0.007	0.014	0.003
4/29/2013	16	0.013	0.008	0.045	0.007	0.051	0.008	0.017	0.005
4/29/2013	17	0.014	0.006	0.017	0.006	0.026	0.008	0.014	0.007
4/29/2013	18	0.015	0.005	0.017	0.005	0.015	0.007	0.013	0.007
4/29/2013	19	0.015	0.005	0.019	0.006	0.018	0.005	0.018	0.004
4/29/2013	20	0.017	0.006	0.022	0.008	0.021	0.004	0.021	0.006
4/29/2013	21	0.043	0.010	0.034	0.012	0.036	0.007	0.035	0.010
4/29/2013	22	0.027	0.013	0.030	0.012	0.033	0.010	0.028	0.010
4/29/2013	23	0.034	0.011	0.031	0.010	0.026	0.010	0.025	0.009
4/30/2013	0	0.021	0.009	0.027	0.012	0.026	0.011	0.021	0.008
4/30/2013	1	0.018	0.009	0.025	0.012	0.017	0.010	0.018	0.009
4/30/2013	2	0.017	0.006	0.023	0.009	0.020	0.009	0.017	0.008
4/30/2013	3	0.020	0.006	0.018	0.010	0.019	0.009	0.017	0.009
4/30/2013	4	0.018	0.006	0.023	0.010	0.018	0.006	0.017	0.008
4/30/2013	5	0.020	0.007	0.021	0.006	0.017	0.006	0.023	0.007
4/30/2013	6	0.025	0.007	0.031	0.007	0.021	0.009	0.018	0.005
4/30/2013	7	0.018	0.007	0.067	0.015	0.048	0.009	0.028	0.007
4/30/2013	8	0.012	0.007	0.040	0.007	0.047	0.007	0.019	0.006
4/30/2013	9	0.015	0.006	0.023	0.006	0.039	0.008	0.015	0.006
4/30/2013	10	0.013	0.008	0.017	0.008	0.035	0.009	0.016	0.009
4/30/2013	11	0.017	0.005	0.025	0.010	0.027	0.010	0.017	0.008
4/30/2013	12	0.023	0.003	0.026	0.010	0.028	0.012	0.024	0.009
4/30/2013	13	0.036	0.007	0.065	0.010	0.074	0.011	0.029	0.010
4/30/2013	14	0.024	0.010	0.100	0.012	0.043	0.011	0.020	0.007
4/30/2013	15	0.019	0.008	0.041	0.011	0.045	0.011	0.024	0.006
4/30/2013	16	0.028	0.007	0.057	0.008	0.034	0.011	0.026	0.007
4/30/2013	17	0.029	0.008	0.086	0.009	0.047	0.008	0.023	0.008
4/30/2013	18	0.027	0.008	0.038	0.010	0.031	0.006	0.026	0.009
4/30/2013	19	0.026	0.009	0.029	0.011	0.028	0.008	0.029	0.011
4/30/2013	20	0.024	0.008	0.031	0.009	0.026	0.006	0.026	0.011
4/30/2013	21	0.030	0.009	0.029	0.009	0.032	0.007	0.032	0.010
4/30/2013	22	0.035	0.011	0.034	0.010	0.032	0.011	0.032	0.010
4/30/2013	23	0.034	0.011	0.028	0.015	0.028	0.011	0.036	0.011



Table 4

Monitored Constituents

The table below shows the sample dates. Table 4 is on the following page.

Station	Week	Sample Date	Sample ID	Work Order	Duration
North	Week 1	4/2/2013	QFF 13-114	1309572	24
	Week 2	4/10/2013	QFF 13-119	1310549	24
	Week 3	4/16/2013	QFF 13-122	1310982	24
	Week 4	4/24/2013	QFF 13-126	1312040	24
	Week 5	4/30/2013	QFF 13-130	1312658	24
East	Week 1	4/2/2013	QFF 13-113	1309570	24
	Week 2	4/10/2013	QFF 13-117	1310547	24
	Week 3	4/16/2013	QFF 13-121	1310981	24
	Week 4	4/24/2013	QFF 13-125	1312039	24
	Week 5	4/30/2013	QFF 13-129	1312656	24
West	Week 1	4/2/2013	QFF 13-115	1309573	24
	Week 2	4/10/2013	QFF 13-118	1310548	24
	Week 3	4/16/2013	QFF 13-123	1310983	24
	Week 4	4/24/2013	QFF 13-127	1312041	24
	Week 5	4/30/2013	QFF 13-131	1312660	24
South	Week 1	4/2/2013	QFF 13-112	1309569	24
	Week 2	4/10/2013	QFF 13-116	1310546	24
	Week 3	4/16/2013	QFF 13-120	1310980	24
	Week 4	4/24/2013	QFF 13-124	1312038	24
	Week 5	4/30/2013	QFF 13-128	1312654	24



Table 4: Monitored Constituents See Footnotes

Analyte	Week	North Station	East Station	West Station	South Station
Elemental Carbon	Week 1	0.33	0.46	0.3	0.17
	Week 2	0.45	0.27	0.26	0.25
	Week 3	0.44	0.45	0.38	0.33
	Week 4	0.3	0.36	0.24	0.3
	Week 5	0.68	0.64	0.47	0.51
Arsenic	Week 1	< LOD	< LOD	< LOD	< LOD
	Week 2	< LOD	< LOD	< LOD	< LOD
	Week 3	< LOD	< LOD	< LOD	< LOD
	Week 4	< LOD	< LOD	< LOD	< LOD
	Week 5	< LOD	< LOD	< LOD	< LOD
Beryllium	Week 1	< LOD	< LOD	< LOD	< LOD
	Week 2	< LOD	< LOD	< LOD	< LOD
	Week 3	0.00011	0.00013	0.0001	0.00017
	Week 4	< LOD	< LOD	< LOD	< LOD
	Week 5	0.000084	0.000085	< LOD	< LOD
Cadmium	Week 1	< LOD	< LOD	< LOD	< LOD
	Week 2	< LOD	< LOD	< LOD	< LOD
	Week 3	< LOD	< LOD	< LOD	< LOD
	Week 4	< LOD	< LOD	< LOD	< LOD
	Week 5	< LOD	< LOD	< LOD	< LOD
Copper	Week 1	0.023	0.035	0.034	0.011
	Week 2	0.022	0.032	0.034	0.013
	Week 3	0.018	0.033	0.026	0.028
	Week 4	0.03	0.027	0.025	0.027
	Week 5	0.025	0.027	0.031	0.037
Lead	Week 1	< LOD	< LOD	< LOD	< LOD
	Week 2	< LOD	< LOD	< LOD	< LOD
	Week 3	< LOD	0.0087	< LOD	0.0081
	Week 4	0.012	0.01	0.0092	0.01
	Week 5	< LOD	< LOD	0.0094	< LOD
Manganese	Week 1	0.0093	0.008	0.012	0.012
	Week 2	0.013	0.014	0.013	0.019
	Week 3	0.06	0.067	0.055	0.1
	Week 4	0.031	0.025	0.028	0.034
	Week 5	0.035	0.037	0.035	0.032
Nickel	Week 1	< LOD	< LOD	< LOD	< LOD
	Week 2	< LOD	< LOD	< LOD	< LOD
	Week 3	0.0019	0.003	0.001	0.0039
	Week 4	< LOD	< LOD	< LOD	< LOD
	Week 5	0.0013	0.0022	0.0022	0.0014
Selenium	Week 1	< LOD	< LOD	< LOD	< LOD
	Week 2	< LOD	< LOD	< LOD	< LOD
	Week 3	< LOD	< LOD	< LOD	< LOD
	Week 4	< LOD	< LOD	< LOD	< LOD
	Week 5	< LOD	< LOD	0.018	0.017

Note 1: All values are in units of micrograms per cubic meter.

Note 2: < LOD = Less than Limit of Detection (LOD).

Note 3: Sample dates are shown in the cover page for this table.

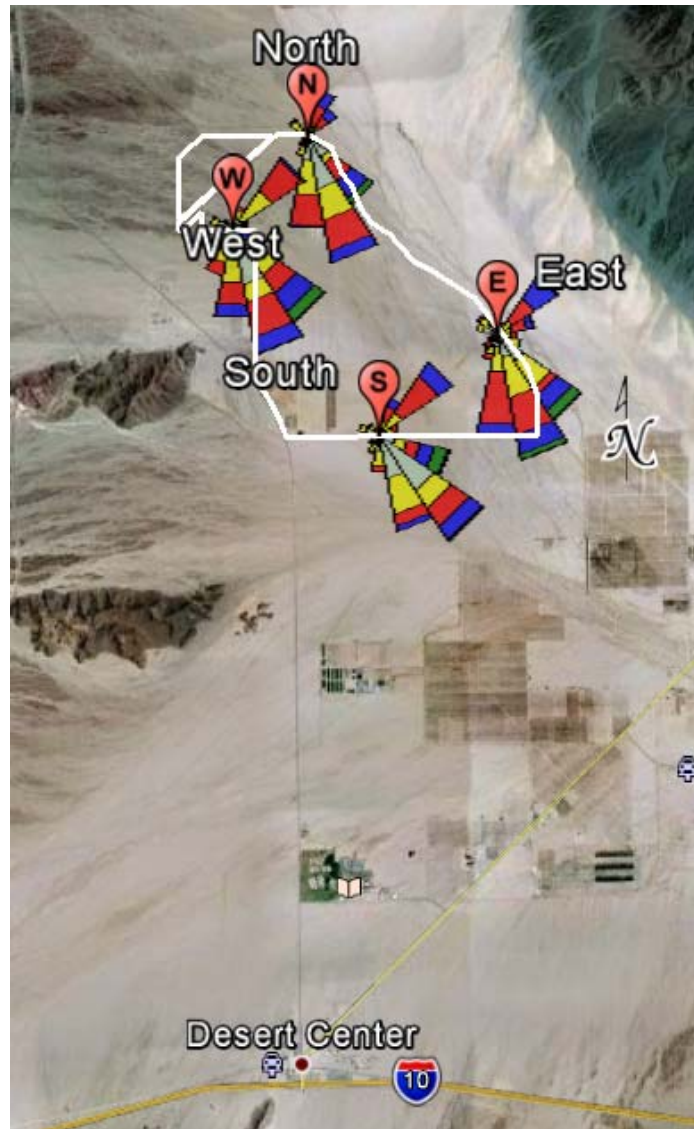


Figure 1: Meteorological Data Summary

The triangles in Figure 1 indicate the direction the wind was blowing **to** rather than **from**. The table below provides a brief explanation of the various wind speed classes.

Color	Wind Speed (knots)
Cyan	≥ 22 knots
Green	17 – 21 knots
Blue	11 – 17 knots
Red	7 – 11 knots
Yellow	4 – 7 knots
Light Green	1 – 4 knots