

DOCKETED

Docket Number:	09-AFC-07C
Project Title:	Palen Solar Power Project - Compliance
TN #:	201290
Document Title:	Exh. 3078 Desert Sunlight Air Quality Monitoring Report Jan 2013
Description:	AQ Monitoring report
Filer:	Ileene Anderson
Organization:	Center for Biological Diversity
Submitter Role:	Intervenor
Submission Date:	11/21/2013 4:22:59 PM
Docketed Date:	11/21/2013

**Desert Sunlight Solar Farm
Air Quality Monitoring Report**

January 2013





Report Index

Tables/Figures

Number	Table/Figure Name
Table 1	PM10 24-hour Time-Weighted Averages, All Sites
Table 2	PM2.5 24-hour Time-Weighted Averages, All Sites
Table 3	Hourly BAM Data, All Sites
Table 4	Monitored Constituents
Figure 1	Meteorological Data Summary



**Table 1: PM10 24-hour Time-Weighted Averages, All Sites
(See Footnotes)**

All values are in units of micrograms per cubic meter.

Date	North Station	East Station	South Station	West Station
1/1/2013	5	---	2	---
1/2/2013	4	3	3	---
1/3/2013	4	4	3	---
1/4/2013	3	4	3	---
1/5/2013	4	2	1	-1
1/6/2013	3	2	---	---
1/7/2013	7	11	34	0
1/8/2013	6	4	6	---
1/9/2013	4	4	4	1
1/10/2013	20	31	26	4
1/11/2013	11	18	29	2
1/12/2013	5	3	3	---
1/13/2013	4	3	3	---
1/14/2013	7	15	43	---
1/15/2013	5	6	7	---
1/16/2013	4	---	4	4
1/17/2013	5	No Data	5	5
1/18/2013	6	No Data	4	---
1/19/2013	7	No Data	4	---
1/20/2013	6	No Data	3	---
1/21/2013	6	No Data	5	1
1/22/2013	6	No Data	6	1
1/23/2013	6	No Data	4	1
1/24/2013	7	No Data	5	1
1/25/2013	7	No Data	5	1
1/26/2013	7	No Data	3	---
1/27/2013	7	No Data	6	2
1/28/2013	6	No Data	5	2
1/29/2013	8	No Data	12	0
1/30/2013	13	No Data	8	---
1/31/2013	50	No Data	6	No Data

Note 1: Please refer to Table 3 for the raw hourly data and treatment of valid and invalid values. All values in the above table are at actual conditions.

Note 2: Days marked 'No Data' are days for which there is no hourly data.

Note 3: Days marked (---) are days for which there is either more than 7 hours of negative data points or more than 12 hours of invalid data points.



**Table 2: PM2.5 24-hour Time-Weighted Averages, All Sites
(See Footnotes)**

All values are in units of micrograms per cubic meter.

Date	North Station	East Station	South Station	West Station
1/1/2013	0.8	0.8	0.5	0.8
1/2/2013	0.9	---	0.2	5.3
1/3/2013	0.9	0.3	---	0.7
1/4/2013	1.3	---	1.7	---
1/5/2013	1.2	---	0.7	0.8
1/6/2013	0.1	---	1.2	---
1/7/2013	2.5	---	2.6	1.9
1/8/2013	---	0.6	1.8	0.6
1/9/2013	---	0.4	1.5	1.1
1/10/2013	1.3	2.5	4.4	4.3
1/11/2013	2.3	1.5	3.6	2
1/12/2013	1.5	0.7	2.3	1.6
1/13/2013	1.2	0.7	0.5	1
1/14/2013	1.5	1.3	---	2.4
1/15/2013	1.1	1.2	1.9	2.6
1/16/2013	0.5	---	2.3	1.9
1/17/2013	1.5	No Data	1	3.1
1/18/2013	0.7	No Data	1.8	1.9
1/19/2013	1.5	No Data	1	1.5
1/20/2013	---	No Data	1.4	1
1/21/2013	0.8	No Data	1.3	1.2
1/22/2013	---	No Data	0.6	1
1/23/2013	0.5	No Data	0.5	1.3
1/24/2013	0.6	No Data	1.7	2.1
1/25/2013	1.7	No Data	4	4.4
1/26/2013	1.3	No Data	5.6	4
1/27/2013	2.5	No Data	5.1	4.7
1/28/2013	1.5	1.8	1.6	2.8
1/29/2013	3	3.3	3.5	3.7
1/30/2013	1.3	2.3	1.6	---
1/31/2013	0.3	1.4	1.4	No Data

Note 1: Please refer to Table 3 for the raw hourly data and treatment of valid and invalid values. All values in the above table are at actual conditions.

Note 2: Days marked 'No Data' are days for which there is no hourly data.

Note 3: Days marked (---) are days for which there is either more than 7 hours of negative data points or more than 12 hours of invalid data points.



Table 3

Hourly BAM Data, All Stations

Please note the following:

1. PM10 and PM2.5 are at actual conditions.
2. Hours for which there are no BAM data are marked "---"
3. Data marked with **bold red** text is invalid due to either an error code produced by the BAM or hourly wind speed > 25 mph or an out-of-range concentration.
4. Data marked with **bold green** text is valid. However, this data is highlighted since there was either a "warning" error code or hourly shelter temperature change exceeding the instrument tolerance.



DESERT SUNLIGHT SOLAR FARM

TABLE 3 - HOURLY BAM DATA

(Please refer to Table 3 cover page for additional details.)

All values are in units of milligrams per cubic meter.

Date	Hour	North Station		East Station		South Station		West Station	
		PM10	PM2.5	PM10	PM2.5	PM10	PM2.5	PM10	PM2.5
1/1/2013	0	0.009	-0.001	0.985	0.002	0.004	0.001	0.001	0.000
1/1/2013	1	0.008	-0.001	0.985	0.003	0.002	0.000	-0.002	-0.002
1/1/2013	2	0.004	0.002	0.985	0.000	0.001	0.000	-0.002	0.000
1/1/2013	3	0.005	0.000	0.985	0.001	-0.001	0.001	0.001	-0.001
1/1/2013	4	0.004	0.001	0.985	0.004	0.002	0.001	0.000	0.002
1/1/2013	5	0.005	0.002	0.985	0.002	0.004	0.000	-0.002	0.004
1/1/2013	6	0.006	0.001	0.985	0.000	0.002	0.002	-0.001	0.001
1/1/2013	7	0.007	0.002	0.985	0.001	0.002	0.001	0.001	0.001
1/1/2013	8	0.006	0.001	0.985	0.001	0.002	0.003	0.000	0.002
1/1/2013	9	0.005	0.002	0.985	0.001	0.002	0.003	0.001	0.001
1/1/2013	10	0.008	0.002	0.985	0.004	0.002	0.000	0.002	0.001
1/1/2013	11	0.007	0.000	0.985	0.002	0.003	-0.002	0.001	0.002
1/1/2013	12	0.005	0.001	0.985	-0.001	0.001	-0.002	0.002	0.001
1/1/2013	13	0.002	0.000	0.985	-0.001	-0.002	-0.001	-0.001	0.001
1/1/2013	14	0.002	-0.001	0.985	-0.001	0.000	0.000	-0.003	0.002
1/1/2013	15	0.006	0.002	0.985	0.000	0.001	-0.001	-0.002	0.002
1/1/2013	16	0.003	0.002	0.985	0.000	0.002	-0.001	-0.001	0.002
1/1/2013	17	0.004	-0.001	0.985	0.000	0.005	-0.001	0.001	0.000
1/1/2013	18	0.006	-0.002	0.985	0.000	0.005	0.002	0.000	0.000
1/1/2013	19	0.004	0.000	0.985	0.000	0.003	0.002	0.001	0.000
1/1/2013	20	0.003	0.002	0.985	0.000	0.000	0.003	0.001	0.000
1/1/2013	21	0.003	0.002	0.985	0.000	-0.001	0.002	0.000	-0.001
1/1/2013	22	0.004	0.001	0.985	-0.001	0.000	-0.002	0.001	-0.001
1/1/2013	23	0.004	0.001	0.985	0.001	0.001	0.001	0.001	0.002
1/2/2013	0	0.005	0.002	0.985	0.004	0.001	0.003	-0.001	0.003
1/2/2013	1	0.007	0.002	0.985	0.002	0.003	0.002	-0.003	0.003
1/2/2013	2	0.006	0.003	0.985	-0.001	0.002	-0.001	-0.002	0.002
1/2/2013	3	0.004	0.005	0.985	-0.003	0.002	-0.001	-0.002	0.003
1/2/2013	4	0.002	0.005	0.985	-0.002	0.003	0.000	-0.003	0.004
1/2/2013	5	0.001	0.002	0.985	-0.001	0.003	0.000	-0.002	0.002
1/2/2013	6	0.000	0.000	0.985	-0.001	0.001	-0.001	0.000	0.001
1/2/2013	7	0.001	0.000	0.985	0.001	0.002	0.000	0.001	0.001
1/2/2013	8	0.002	0.000	0.985	0.002	0.003	0.001	0.001	0.000
1/2/2013	9	0.005	-0.001	0.985	0.985	0.001	0.000	0.000	0.002
1/2/2013	10	0.007	0.000	0.985	-0.001	0.002	-0.001	-0.003	0.001
1/2/2013	11	0.006	0.001	0.003	-0.003	0.003	0.000	-0.002	0.096
1/2/2013	12	0.002	-0.002	0.000	-0.001	0.000	0.000	-0.001	-0.001
1/2/2013	13	0.005	-0.003	0.001	0.001	0.002	0.000	-0.001	0.000
1/2/2013	14	0.008	-0.001	0.006	-0.001	0.003	0.000	-0.002	0.002
1/2/2013	15	0.005	0.002	0.005	-0.004	0.002	0.001	-0.003	0.004
1/2/2013	16	0.003	-0.001	0.001	-0.004	0.005	0.003	-0.003	0.002
1/2/2013	17	0.005	-0.001	0.004	0.001	0.008	0.002	-0.002	0.001
1/2/2013	18	0.004	0.004	0.007	0.000	0.006	0.000	0.000	0.001
1/2/2013	19	0.003	0.002	0.005	0.000	0.006	-0.002	0.000	-0.002
1/2/2013	20	0.004	0.001	0.005	0.002	0.003	-0.001	0.000	-0.001
1/2/2013	21	0.004	-0.001	0.002	0.002	0.000	-0.001	0.001	0.001
1/2/2013	22	0.004	0.000	-0.001	0.001	0.001	0.000	0.002	0.000
1/2/2013	23	0.005	0.003	0.001	0.000	-0.001	0.002	0.000	0.002



DESERT SUNLIGHT SOLAR FARM

TABLE 3 - HOURLY BAM DATA

(Please refer to Table 3 cover page for additional details.)

All values are in units of milligrams per cubic meter.

Date	Hour	North Station		East Station		South Station		West Station	
		PM10	PM2.5	PM10	PM2.5	PM10	PM2.5	PM10	PM2.5
1/3/2013	0	0.005	0.003	0.004	0.000	-0.001	0.000	-0.002	0.001
1/3/2013	1	0.005	0.001	0.004	0.001	0.000	-0.001	-0.002	0.001
1/3/2013	2	0.005	0.001	0.005	0.001	0.002	0.000	-0.003	0.002
1/3/2013	3	0.006	0.001	0.003	-0.002	-0.001	-0.002	-0.004	0.000
1/3/2013	4	0.006	0.000	0.002	-0.003	-0.002	-0.003	-0.002	0.001
1/3/2013	5	---	---	0.004	0.002	0.003	-0.002	-0.001	0.001
1/3/2013	6	---	---	0.004	0.002	0.005	0.001	-0.001	-0.001
1/3/2013	7	---	---	0.002	-0.001	---	---	-0.001	0.000
1/3/2013	8	0.985	0.985	0.002	0.000	0.985	0.985	-0.001	0.000
1/3/2013	9	-0.009	-0.014	0.004	0.001	-0.005	-0.013	0.002	0.001
1/3/2013	10	-0.011	-0.013	0.005	-0.001	0.001	-0.008	0.000	0.003
1/3/2013	11	-0.007	-0.010	0.006	0.000	0.006	-0.004	-0.003	0.000
1/3/2013	12	0.000	-0.003	0.005	0.002	0.003	-0.004	-0.001	-0.001
1/3/2013	13	0.001	0.000	0.004	-0.001	0.001	-0.003	-0.001	0.000
1/3/2013	14	0.001	0.000	0.002	0.000	0.007	-0.002	-0.001	0.001
1/3/2013	15	0.004	0.001	0.001	0.002	0.008	0.002	0.000	-0.001
1/3/2013	16	0.005	0.001	0.003	0.000	0.006	0.001	-0.001	-0.001
1/3/2013	17	0.004	0.001	0.005	0.000	0.009	-0.001	-0.001	0.000
1/3/2013	18	0.007	0.003	0.007	0.001	0.008	0.000	-0.001	0.001
1/3/2013	19	0.004	0.004	0.008	0.002	0.007	0.002	0.000	0.002
1/3/2013	20	0.000	0.001	0.005	0.001	0.004	0.002	0.000	0.000
1/3/2013	21	0.003	-0.002	0.004	0.000	0.002	0.001	-0.001	0.000
1/3/2013	22	0.004	0.001	0.004	0.000	0.002	-0.001	0.000	0.003
1/3/2013	23	0.003	0.003	0.002	0.001	0.001	-0.001	-0.001	0.003
1/4/2013	0	0.007	0.003	0.003	0.001	0.000	0.001	-0.002	0.002
1/4/2013	1	0.005	0.000	0.006	0.000	0.002	0.001	-0.001	0.002
1/4/2013	2	0.003	0.001	0.005	-0.001	0.002	0.001	-0.003	0.001
1/4/2013	3	0.006	0.000	0.003	0.000	-0.001	0.003	-0.002	0.000
1/4/2013	4	0.005	0.000	0.004	0.001	0.000	0.002	0.001	0.001
1/4/2013	5	0.005	0.001	0.004	0.001	0.005	0.002	0.000	0.001
1/4/2013	6	0.006	0.001	0.006	0.002	0.008	0.002	-0.001	0.000
1/4/2013	7	0.007	0.002	0.006	0.005	0.004	0.002	-0.001	-0.002
1/4/2013	8	0.005	0.003	0.003	0.002	0.003	0.004	0.000	-0.001
1/4/2013	9	0.002	0.003	0.005	-0.001	0.985	0.985	0.000	0.000
1/4/2013	10	0.003	0.003	0.005	-0.001	0.985	0.985	-0.002	0.001
1/4/2013	11	0.000	-0.001	0.985	0.985	0.005	0.003	-0.003	-0.001
1/4/2013	12	0.001	0.985	0.002	-0.003	0.004	0.002	-0.004	-0.004
1/4/2013	13	0.000	0.000	0.001	-0.006	0.000	0.000	-0.003	-0.002
1/4/2013	14	-0.002	0.000	0.001	-0.006	0.000	-0.002	-0.002	-0.002
1/4/2013	15	0.000	-0.001	0.002	-0.002	0.003	0.000	-0.002	-0.001
1/4/2013	16	0.001	-0.001	0.002	-0.002	0.003	0.001	-0.002	-0.001
1/4/2013	17	0.003	0.001	0.003	-0.001	0.002	0.001	-0.001	0.002
1/4/2013	18	0.003	0.003	0.005	0.002	0.004	0.004	0.002	0.006
1/4/2013	19	0.002	0.003	0.007	0.001	0.006	0.005	-0.001	0.004
1/4/2013	20	0.000	0.004	0.006	-0.001	0.004	0.004	-0.004	0.001
1/4/2013	21	0.002	0.003	0.003	-0.002	0.004	0.003	-0.002	-0.002
1/4/2013	22	0.005	0.002	0.001	0.001	0.004	0.000	-0.001	-0.001
1/4/2013	23	0.004	0.001	0.003	0.003	0.003	-0.001	-0.001	-0.001



DESERT SUNLIGHT SOLAR FARM

TABLE 3 - HOURLY BAM DATA

(Please refer to Table 3 cover page for additional details.)

All values are in units of milligrams per cubic meter.

Date	Hour	North Station		East Station		South Station		West Station	
		PM10	PM2.5	PM10	PM2.5	PM10	PM2.5	PM10	PM2.5
1/5/2013	0	0.004	0.000	0.004	0.001	0.005	0.001	-0.001	0.002
1/5/2013	1	0.005	0.001	0.002	-0.002	0.002	0.000	-0.001	0.001
1/5/2013	2	0.003	0.003	0.002	0.000	0.000	0.001	-0.001	0.000
1/5/2013	3	0.001	0.001	0.000	0.001	0.002	0.000	0.001	0.001
1/5/2013	4	0.000	0.000	-0.001	0.000	0.002	0.002	0.000	-0.002
1/5/2013	5	0.002	0.003	0.002	-0.001	0.002	0.002	-0.002	-0.002
1/5/2013	6	0.006	0.002	0.002	-0.002	0.000	-0.002	0.000	0.000
1/5/2013	7	0.005	0.001	0.002	-0.001	0.002	0.001	0.001	0.001
1/5/2013	8	0.005	0.002	0.005	0.001	0.002	0.003	0.001	0.000
1/5/2013	9	0.005	0.002	0.005	0.001	0.002	0.002	-0.001	-0.001
1/5/2013	10	0.004	0.002	0.001	-0.001	0.000	0.002	-0.003	0.001
1/5/2013	11	0.004	0.001	-0.001	-0.001	0.000	0.002	-0.003	0.000
1/5/2013	12	0.004	-0.001	-0.003	0.001	-0.002	-0.001	0.985	-0.002
1/5/2013	13	0.002	0.000	-0.004	-0.002	-0.005	-0.003	0.985	-0.002
1/5/2013	14	0.002	0.001	-0.001	-0.004	-0.001	0.000	0.985	-0.001
1/5/2013	15	0.002	-0.001	0.000	-0.003	0.000	-0.001	0.985	-0.001
1/5/2013	16	0.002	-0.002	0.003	-0.002	0.000	-0.002	0.985	0.000
1/5/2013	17	0.005	0.000	0.006	0.000	0.001	0.000	0.985	0.002
1/5/2013	18	0.007	0.001	0.005	0.002	0.004	0.000	0.985	0.006
1/5/2013	19	0.006	0.002	0.004	0.000	0.003	0.002	0.985	0.006
1/5/2013	20	0.006	0.002	0.002	-0.003	0.002	0.002	0.985	0.002
1/5/2013	21	0.005	0.002	0.001	-0.001	0.000	0.002	0.985	0.002
1/5/2013	22	0.003	0.004	0.001	0.001	-0.001	0.002	0.985	0.003
1/5/2013	23	0.004	0.003	0.000	0.000	0.001	0.002	0.985	0.004
1/6/2013	0	0.003	0.000	0.002	-0.001	0.000	0.002	0.985	-0.001
1/6/2013	1	0.003	0.000	0.007	-0.001	0.000	0.000	0.985	-0.002
1/6/2013	2	0.002	0.000	0.006	-0.001	-0.002	0.000	0.985	0.001
1/6/2013	3	0.001	0.001	0.001	-0.001	-0.001	0.001	0.985	0.000
1/6/2013	4	0.002	-0.002	0.002	-0.001	0.002	0.001	0.985	-0.002
1/6/2013	5	0.005	0.000	0.001	-0.001	0.002	0.000	0.985	-0.002
1/6/2013	6	0.004	0.002	0.001	0.003	0.001	0.001	0.985	-0.001
1/6/2013	7	0.004	-0.001	0.002	0.004	0.000	0.001	0.985	-0.001
1/6/2013	8	0.002	0.002	0.001	0.001	0.000	0.000	0.985	0.000
1/6/2013	9	0.002	0.001	0.003	-0.002	0.000	0.002	0.985	0.000
1/6/2013	10	0.002	-0.001	0.000	-0.003	0.000	0.003	0.985	0.001
1/6/2013	11	0.003	0.001	-0.003	-0.003	0.985	-0.001	0.985	0.002
1/6/2013	12	0.003	0.000	-0.002	-0.001	0.985	-0.001	0.985	0.003
1/6/2013	13	0.003	-0.003	0.003	-0.001	0.985	0.000	0.985	0.002
1/6/2013	14	0.002	-0.003	0.004	-0.004	0.985	0.003	0.985	0.001
1/6/2013	15	0.002	-0.001	0.001	-0.002	0.985	0.005	0.985	-0.002
1/6/2013	16	0.005	0.000	0.001	-0.001	0.985	0.003	0.985	-0.004
1/6/2013	17	0.006	-0.001	0.001	0.000	0.985	0.002	0.985	-0.002
1/6/2013	18	0.007	0.000	0.004	0.001	0.985	0.001	0.985	0.004
1/6/2013	19	0.007	0.002	0.005	0.003	0.985	0.001	0.985	0.006
1/6/2013	20	0.006	0.001	0.003	0.004	0.985	0.001	0.985	0.003
1/6/2013	21	0.003	0.001	0.003	0.002	0.985	0.002	0.985	0.002
1/6/2013	22	0.002	0.002	0.004	0.001	0.985	0.002	0.985	0.002
1/6/2013	23	0.004	0.001	0.003	0.002	0.985	0.000	0.985	0.002



DESERT SUNLIGHT SOLAR FARM

TABLE 3 - HOURLY BAM DATA

(Please refer to Table 3 cover page for additional details.)

All values are in units of milligrams per cubic meter.

Date	Hour	North Station		East Station		South Station		West Station	
		PM10	PM2.5	PM10	PM2.5	PM10	PM2.5	PM10	PM2.5
1/7/2013	0	0.003	0.004	0.003	0.000	0.985	0.002	0.985	0.002
1/7/2013	1	0.003	0.005	0.005	0.000	0.985	0.003	0.985	0.003
1/7/2013	2	0.004	0.004	0.005	0.002	0.985	0.003	0.985	0.004
1/7/2013	3	0.004	0.003	0.003	0.002	0.985	0.001	0.985	0.003
1/7/2013	4	0.006	0.002	0.001	0.003	0.985	0.002	0.985	0.005
1/7/2013	5	0.005	0.002	0.002	0.004	0.985	0.004	0.985	0.003
1/7/2013	6	0.006	0.003	0.002	0.001	0.985	0.004	0.985	0.003
1/7/2013	7	0.005	0.003	0.002	0.002	0.985	0.002	0.985	0.005
1/7/2013	8	0.005	0.003	0.004	0.005	0.985	0.004	0.985	0.003
1/7/2013	9	-0.001	0.004	0.005	0.003	0.985	0.003	0.985	0.000
1/7/2013	10	0.019	0.002	0.030	0.002	0.985	0.002	0.985	-0.001
1/7/2013	11	0.010	0.000	0.028	0.002	0.096	0.004	-0.001	0.001
1/7/2013	12	0.011	0.001	0.045	-0.002	0.101	0.002	0.000	0.000
1/7/2013	13	0.024	0.000	0.063	-0.002	0.126	0.003	0.002	-0.002
1/7/2013	14	0.015	0.000	0.013	-0.001	0.050	0.005	0.001	0.001
1/7/2013	15	0.009	0.001	0.010	-0.001	0.010	0.004	0.000	0.003
1/7/2013	16	0.006	0.003	0.005	-0.001	0.009	0.002	-0.001	0.002
1/7/2013	17	0.006	0.003	0.004	-0.001	0.010	0.002	-0.001	0.002
1/7/2013	18	0.004	0.003	0.006	-0.001	0.008	0.004	-0.002	0.003
1/7/2013	19	0.006	0.004	0.006	-0.002	0.007	0.002	-0.003	0.001
1/7/2013	20	0.007	0.003	0.006	0.001	0.008	-0.001	-0.001	0.000
1/7/2013	21	0.006	0.002	0.008	0.003	0.006	0.000	0.000	0.002
1/7/2013	22	0.007	0.004	0.007	0.004	0.005	0.002	-0.001	0.001
1/7/2013	23	0.008	0.002	0.007	0.002	0.006	0.003	0.001	0.001
1/8/2013	0	0.007	-0.001	0.007	-0.001	0.004	0.004	0.002	0.002
1/8/2013	1	0.007	-0.001	0.003	-0.001	0.004	0.004	0.002	0.002
1/8/2013	2	0.008	-0.001	0.002	0.000	0.005	0.003	0.000	0.000
1/8/2013	3	0.009	0.000	0.002	0.000	0.001	0.000	-0.001	-0.003
1/8/2013	4	0.008	-0.001	0.003	-0.001	0.002	0.001	0.001	-0.004
1/8/2013	5	0.006	0.000	0.002	0.001	0.005	0.003	0.000	-0.001
1/8/2013	6	0.006	0.001	0.003	0.003	0.005	0.002	-0.001	0.001
1/8/2013	7	0.005	0.002	0.006	0.001	0.006	0.001	-0.003	0.002
1/8/2013	8	0.004	0.002	0.006	0.001	0.009	0.002	-0.002	0.002
1/8/2013	9	0.006	0.001	0.004	0.004	0.009	0.003	0.001	0.001
1/8/2013	10	0.006	0.000	0.004	0.001	0.006	0.003	0.001	0.001
1/8/2013	11	0.006	-0.001	0.004	-0.004	0.008	0.002	0.000	0.000
1/8/2013	12	0.007	-0.001	0.004	-0.005	0.017	-0.001	0.001	0.000
1/8/2013	13	0.007	-0.001	0.001	-0.005	0.006	-0.001	0.000	0.000
1/8/2013	14	0.004	-0.001	0.000	-0.002	0.006	0.002	-0.003	0.000
1/8/2013	15	0.001	-0.001	0.001	0.001	0.006	0.002	-0.004	0.001
1/8/2013	16	0.003	-0.001	0.001	0.000	0.003	0.000	-0.005	0.001
1/8/2013	17	0.006	-0.001	0.004	0.001	0.002	0.000	-0.003	0.001
1/8/2013	18	0.006	0.000	0.007	0.003	0.004	0.003	0.002	0.001
1/8/2013	19	0.003	0.004	0.006	0.004	0.005	0.002	0.004	0.002
1/8/2013	20	0.003	0.004	0.004	0.002	0.004	0.002	0.001	0.002
1/8/2013	21	0.004	0.002	0.003	-0.001	0.003	0.002	0.000	0.001
1/8/2013	22	0.006	0.003	0.004	-0.001	0.006	0.002	-0.001	0.000
1/8/2013	23	0.009	0.002	0.004	0.003	0.006	0.002	-0.002	0.002



DESERT SUNLIGHT SOLAR FARM

TABLE 3 - HOURLY BAM DATA

(Please refer to Table 3 cover page for additional details.)

All values are in units of milligrams per cubic meter.

Date	Hour	North Station		East Station		South Station		West Station	
		PM10	PM2.5	PM10	PM2.5	PM10	PM2.5	PM10	PM2.5
1/9/2013	0	0.009	-0.001	0.002	0.003	0.004	0.001	0.002	0.003
1/9/2013	1	0.005	-0.002	0.003	0.001	0.003	0.003	0.002	0.002
1/9/2013	2	0.003	0.000	0.004	0.002	0.003	0.002	0.001	0.000
1/9/2013	3	0.005	0.001	0.005	0.001	0.003	0.001	0.001	0.000
1/9/2013	4	0.007	0.001	0.003	0.002	0.002	0.001	0.000	0.000
1/9/2013	5	0.006	-0.001	0.002	0.002	0.003	0.000	0.000	-0.002
1/9/2013	6	0.003	-0.003	0.003	-0.001	0.005	0.000	-0.001	0.000
1/9/2013	7	0.002	-0.003	0.002	0.000	0.004	0.001	0.000	0.000
1/9/2013	8	0.005	0.000	0.006	0.000	0.005	0.005	0.001	0.000
1/9/2013	9	0.005	0.003	0.012	0.000	0.008	0.003	-0.002	0.002
1/9/2013	10	0.004	0.001	0.014	0.002	0.006	0.000	-0.003	-0.015
1/9/2013	11	0.002	-0.002	0.008	0.000	0.001	-0.001	-0.002	0.000
1/9/2013	12	0.001	-0.002	0.001	-0.004	0.000	-0.004	-0.001	-0.001
1/9/2013	13	0.003	-0.001	0.003	-0.004	0.005	0.000	0.000	-0.002
1/9/2013	14	0.003	0.001	0.985	-0.004	0.004	0.002	0.000	-0.001
1/9/2013	15	0.002	0.000	0.003	-0.001	0.000	0.001	0.001	0.000
1/9/2013	16	0.004	-0.003	0.000	0.001	0.003	0.001	0.001	0.002
1/9/2013	17	0.009	0.001	-0.001	0.000	0.006	0.000	0.001	0.004
1/9/2013	18	0.007	0.001	0.001	0.002	0.006	0.001	0.002	0.002
1/9/2013	19	0.005	0.000	0.005	0.002	0.006	0.005	0.003	0.001
1/9/2013	20	0.004	0.003	0.006	-0.001	0.005	0.005	0.002	0.004
1/9/2013	21	0.000	0.003	0.003	-0.001	0.004	0.004	0.007	0.006
1/9/2013	22	0.002	0.003	0.001	0.003	0.005	0.004	0.007	0.005
1/9/2013	23	0.005	0.001	0.001	0.005	0.005	0.001	0.000	0.001
1/10/2013	0	0.006	0.001	0.002	0.002	0.006	0.001	0.000	0.001
1/10/2013	1	0.006	0.001	0.007	-0.001	0.007	0.002	0.000	0.004
1/10/2013	2	0.006	0.002	0.009	0.000	0.006	0.001	-0.001	0.002
1/10/2013	3	0.007	0.001	0.007	0.001	0.004	0.000	-0.003	0.003
1/10/2013	4	0.008	0.000	0.006	-0.001	0.004	-0.001	-0.003	0.003
1/10/2013	5	---	---	0.007	-0.004	0.009	0.001	0.000	0.003
1/10/2013	6	---	---	0.011	0.000	0.013	0.005	0.003	0.005
1/10/2013	7	---	---	0.022	0.004	0.030	0.009	0.004	0.006
1/10/2013	8	---	---	0.018	0.007	0.019	0.008	0.004	0.007
1/10/2013	9	---	---	0.057	0.009	0.032	0.007	0.005	0.009
1/10/2013	10	0.985	0.985	0.021	0.008	0.021	0.010	0.004	0.007
1/10/2013	11	0.001	-0.008	0.023	0.005	0.013	0.009	0.003	0.006
1/10/2013	12	-0.001	-0.008	0.001	0.001	0.010	0.001	0.002	0.003
1/10/2013	13	0.041	-0.008	0.193	0.000	0.133	0.001	0.017	0.004
1/10/2013	14	0.045	-0.004	0.080	0.003	0.053	0.007	0.008	0.008
1/10/2013	15	0.035	0.001	0.048	0.003	0.057	0.007	0.010	0.006
1/10/2013	16	0.040	0.003	0.043	0.002	0.038	0.004	0.011	0.006
1/10/2013	17	0.046	0.002	0.052	0.004	0.092	0.006	0.009	0.005
1/10/2013	18	0.017	0.002	0.023	0.004	0.016	0.007	0.004	0.001
1/10/2013	19	0.014	0.001	0.014	0.002	0.014	0.004	0.001	0.003
1/10/2013	20	0.010	0.003	0.013	0.003	0.011	0.004	0.002	0.004
1/10/2013	21	0.016	0.003	0.009	0.003	0.008	0.003	0.002	0.002
1/10/2013	22	0.043	0.002	0.048	0.003	0.017	0.003	0.005	0.002
1/10/2013	23	0.022	0.002	0.029	0.003	0.017	0.006	0.006	0.003



DESERT SUNLIGHT SOLAR FARM

TABLE 3 - HOURLY BAM DATA

(Please refer to Table 3 cover page for additional details.)

All values are in units of milligrams per cubic meter.

Date	Hour	North Station		East Station		South Station		West Station	
		PM10	PM2.5	PM10	PM2.5	PM10	PM2.5	PM10	PM2.5
1/11/2013	0	0.024	0.002	0.209	0.003	0.368	0.010	0.003	0.003
1/11/2013	1	0.017	0.004	0.020	0.005	0.053	0.008	0.004	0.004
1/11/2013	2	0.021	0.003	0.019	0.003	0.018	0.001	0.004	0.003
1/11/2013	3	0.022	0.002	0.012	0.000	0.021	0.003	0.005	0.001
1/11/2013	4	0.017	0.005	0.026	0.001	0.025	0.005	0.008	0.002
1/11/2013	5	0.027	0.005	0.025	0.002	0.021	0.003	0.008	0.003
1/11/2013	6	0.026	0.004	0.026	0.002	0.025	0.005	0.005	0.001
1/11/2013	7	0.023	0.004	0.019	0.001	0.020	0.004	0.004	0.002
1/11/2013	8	0.008	0.004	0.009	0.002	0.013	0.001	0.004	0.003
1/11/2013	9	0.008	0.005	0.009	0.002	0.042	0.002	0.002	0.001
1/11/2013	10	0.009	0.004	0.007	0.001	0.035	0.002	-0.001	-0.001
1/11/2013	11	0.008	0.003	0.004	0.001	0.005	0.001	-0.001	0.000
1/11/2013	12	0.006	0.001	0.005	0.000	0.006	0.003	0.001	0.000
1/11/2013	13	0.004	0.000	0.003	0.000	0.005	0.004	0.001	0.000
1/11/2013	14	0.004	-0.003	-0.001	0.001	0.003	0.002	0.000	0.001
1/11/2013	15	0.004	-0.002	0.001	0.001	0.003	0.002	0.000	0.001
1/11/2013	16	0.005	0.001	0.003	0.001	0.002	0.001	-0.002	0.002
1/11/2013	17	0.004	0.001	0.003	0.000	0.002	0.001	-0.001	0.004
1/11/2013	18	0.004	0.001	0.005	0.001	0.005	0.004	0.001	0.005
1/11/2013	19	0.003	0.001	0.004	0.002	0.004	0.006	-0.002	0.004
1/11/2013	20	0.001	0.004	0.001	0.001	0.004	0.003	-0.003	0.003
1/11/2013	21	0.004	0.004	0.002	0.001	0.003	0.002	0.000	0.003
1/11/2013	22	0.010	0.001	0.008	0.002	0.007	0.006	0.000	0.001
1/11/2013	23	0.012	0.002	0.011	0.002	0.009	0.007	0.000	0.002
1/12/2013	0	0.007	0.002	0.008	0.000	0.007	0.005	0.002	0.002
1/12/2013	1	0.006	0.000	0.007	0.001	0.006	0.004	0.002	0.001
1/12/2013	2	0.006	0.002	0.006	0.003	0.003	0.004	0.001	0.001
1/12/2013	3	0.006	0.004	0.005	0.003	0.005	0.004	-0.002	0.002
1/12/2013	4	0.007	0.003	0.007	0.002	0.007	0.004	-0.001	0.002
1/12/2013	5	0.006	0.002	0.004	0.001	0.006	0.006	0.000	0.005
1/12/2013	6	0.004	0.002	0.003	0.002	0.006	0.008	0.000	0.004
1/12/2013	7	0.003	0.004	0.004	0.002	0.006	0.005	0.003	0.002
1/12/2013	8	0.005	0.005	0.004	0.001	0.006	0.002	0.003	0.005
1/12/2013	9	0.006	0.003	0.004	-0.001	0.005	0.001	0.000	0.002
1/12/2013	10	0.006	0.000	0.004	0.000	0.000	-0.001	0.000	0.001
1/12/2013	11	0.004	0.000	0.003	-0.001	-0.001	0.000	-0.002	0.001
1/12/2013	12	0.003	0.000	0.002	-0.001	0.003	0.000	-0.004	-0.001
1/12/2013	13	0.004	0.002	0.004	0.001	0.002	0.000	-0.004	0.000
1/12/2013	14	0.005	0.003	0.006	-0.001	-0.001	0.001	-0.003	0.001
1/12/2013	15	0.005	-0.001	0.002	-0.001	0.000	0.002	-0.002	0.002
1/12/2013	16	0.002	-0.002	0.000	0.000	0.002	0.002	-0.001	0.002
1/12/2013	17	0.005	0.000	0.002	-0.002	0.002	0.003	0.000	0.002
1/12/2013	18	0.003	0.000	0.002	-0.001	0.001	0.002	-0.001	0.005
1/12/2013	19	0.001	0.001	-0.001	0.002	0.001	0.001	-0.001	0.000
1/12/2013	20	0.007	0.002	0.002	0.002	0.000	0.002	-0.002	-0.001
1/12/2013	21	0.008	0.000	0.002	0.001	-0.001	0.001	-0.001	0.000
1/12/2013	22	0.004	0.002	-0.001	0.001	0.002	-0.002	0.001	0.000
1/12/2013	23	0.006	0.002	0.000	0.002	0.004	0.000	-0.001	0.000



DESERT SUNLIGHT SOLAR FARM

TABLE 3 - HOURLY BAM DATA

(Please refer to Table 3 cover page for additional details.)

All values are in units of milligrams per cubic meter.

Date	Hour	North Station		East Station		South Station		West Station	
		PM10	PM2.5	PM10	PM2.5	PM10	PM2.5	PM10	PM2.5
1/13/2013	0	0.008	0.002	0.003	-0.001	0.002	0.003	0.000	0.001
1/13/2013	1	0.004	0.002	0.004	-0.002	0.002	0.002	0.003	0.001
1/13/2013	2	0.004	0.002	0.005	-0.002	0.003	0.000	0.000	0.000
1/13/2013	3	0.003	0.001	0.002	0.000	0.001	0.002	-0.001	0.001
1/13/2013	4	0.003	0.001	0.002	0.002	0.002	0.002	0.002	0.001
1/13/2013	5	0.007	0.000	0.004	0.000	0.005	0.001	0.002	0.003
1/13/2013	6	0.007	0.003	0.015	0.003	0.007	0.002	0.001	0.000
1/13/2013	7	0.007	0.005	0.003	0.003	0.006	0.002	0.001	0.002
1/13/2013	8	0.005	0.002	0.004	0.003	0.005	0.001	0.001	0.004
1/13/2013	9	0.004	0.001	0.003	0.001	0.004	-0.001	0.001	0.001
1/13/2013	10	0.003	0.002	-0.001	-0.001	0.002	-0.003	-0.001	-0.003
1/13/2013	11	0.002	0.001	-0.001	0.000	0.002	-0.003	-0.001	-0.002
1/13/2013	12	0.003	0.001	0.001	0.000	-0.001	0.002	0.000	0.001
1/13/2013	13	0.001	0.002	0.001	-0.001	-0.002	0.001	-0.001	0.001
1/13/2013	14	0.000	-0.001	0.003	-0.001	0.000	-0.002	0.000	0.001
1/13/2013	15	0.000	0.000	0.003	-0.001	0.003	0.000	-0.002	-0.001
1/13/2013	16	0.001	0.001	0.002	0.001	0.002	0.000	-0.004	-0.001
1/13/2013	17	0.006	0.001	0.004	0.002	0.004	-0.001	-0.003	0.002
1/13/2013	18	0.008	0.003	0.002	0.001	0.003	0.000	0.001	0.002
1/13/2013	19	0.006	0.003	0.002	0.002	-0.001	0.001	0.001	0.003
1/13/2013	20	0.003	0.002	0.002	0.002	0.002	0.002	-0.002	0.002
1/13/2013	21	0.002	-0.001	0.001	0.002	0.002	0.005	0.985	-0.001
1/13/2013	22	0.001	-0.003	0.002	0.002	0.002	0.003	0.985	0.001
1/13/2013	23	0.005	-0.002	0.001	0.002	0.002	0.002	0.985	0.001
1/14/2013	0	0.007	0.000	0.000	0.002	0.002	0.004	0.985	-0.001
1/14/2013	1	0.005	0.004	0.001	0.004	0.004	0.004	0.985	-0.001
1/14/2013	2	0.004	0.003	0.003	0.002	0.002	0.004	0.985	-0.002
1/14/2013	3	0.007	0.001	0.005	0.000	0.000	0.004	0.985	-0.001
1/14/2013	4	0.010	0.003	0.008	0.001	0.001	0.005	0.985	0.002
1/14/2013	5	0.009	0.002	0.009	0.002	0.002	0.006	0.985	0.002
1/14/2013	6	0.007	0.002	0.009	0.003	0.003	0.008	0.985	0.004
1/14/2013	7	0.007	0.003	0.006	0.004	0.004	0.010	0.985	0.004
1/14/2013	8	0.985	0.985	0.006	0.002	0.002	0.010	0.985	0.000
1/14/2013	9	0.004	0.004	0.006	0.000	0.000	0.009	0.985	-0.001
1/14/2013	10	0.007	0.001	0.035	0.000	0.000	0.078	0.985	-0.001
1/14/2013	11	0.009	0.000	0.085	0.002	0.002	0.311	0.985	-0.001
1/14/2013	12	0.008	0.000	0.081	0.003	0.003	0.285	0.985	0.001
1/14/2013	13	0.025	-0.001	0.027	0.003	0.003	0.101	0.985	0.004
1/14/2013	14	0.004	0.001	0.008	0.001	0.001	0.076	0.985	0.001
1/14/2013	15	0.003	0.003	0.008	-0.002	-0.002	0.070	0.985	-0.002
1/14/2013	16	0.001	0.001	0.007	-0.004	-0.004	0.021	0.985	0.005
1/14/2013	17	0.005	0.002	0.007	-0.002	-0.002	0.004	0.985	0.004
1/14/2013	18	0.008	0.003	0.008	0.001	0.001	0.006	0.985	-0.002
1/14/2013	19	0.009	0.000	0.008	0.001	0.001	0.007	0.985	-0.003
1/14/2013	20	0.006	-0.001	0.008	0.002	0.002	0.005	0.985	-0.004
1/14/2013	21	0.002	-0.001	0.006	0.003	0.003	0.003	0.985	-0.002
1/14/2013	22	0.005	0.001	0.006	0.001	0.001	0.001	0.985	-0.001
1/14/2013	23	0.007	0.003	0.006	0.001	0.001	0.003	0.985	0.000



DESERT SUNLIGHT SOLAR FARM

TABLE 3 - HOURLY BAM DATA

(Please refer to Table 3 cover page for additional details.)

All values are in units of milligrams per cubic meter.

Date	Hour	North Station		East Station		South Station		West Station	
		PM10	PM2.5	PM10	PM2.5	PM10	PM2.5	PM10	PM2.5
1/15/2013	0	0.005	0.004	0.006	0.000	0.004	0.985	-0.001	0.001
1/15/2013	1	0.004	0.002	0.009	0.001	0.005	0.985	-0.002	0.003
1/15/2013	2	0.006	0.001	0.008	0.002	0.007	0.985	0.000	0.005
1/15/2013	3	0.009	0.003	0.007	0.000	0.006	0.985	0.000	0.005
1/15/2013	4	0.008	0.003	0.007	0.003	0.006	0.985	0.002	0.004
1/15/2013	5	0.005	0.000	0.006	0.004	0.006	0.985	0.001	0.003
1/15/2013	6	0.005	0.000	0.006	0.002	0.004	0.985	-0.001	0.003
1/15/2013	7	0.009	0.002	0.006	0.001	0.008	0.985	0.001	0.003
1/15/2013	8	0.009	0.002	0.006	0.001	0.025	0.985	0.007	0.004
1/15/2013	9	0.005	0.001	0.008	0.002	0.014	0.985	0.008	0.004
1/15/2013	10	0.006	0.001	0.010	0.002	0.010	0.002	0.002	0.000
1/15/2013	11	0.006	0.001	0.007	0.000	0.006	0.001	0.001	0.001
1/15/2013	12	0.006	-0.001	0.006	0.001	0.008	0.000	0.016	0.005
1/15/2013	13	0.006	0.000	0.005	0.001	0.008	0.001	0.005	0.004
1/15/2013	14	0.004	0.000	0.002	0.000	0.006	0.000	0.007	0.002
1/15/2013	15	0.003	0.001	0.003	0.002	0.005	-0.001	0.009	0.001
1/15/2013	16	0.003	0.000	0.006	0.000	0.006	0.000	0.009	0.002
1/15/2013	17	0.003	-0.002	0.006	0.001	0.007	0.003	0.006	0.004
1/15/2013	18	0.004	-0.002	0.004	0.002	0.007	0.003	0.001	0.003
1/15/2013	19	0.003	0.003	0.005	0.000	0.003	0.005	-0.003	0.001
1/15/2013	20	0.003	0.004	0.006	0.001	0.002	0.003	-0.003	0.000
1/15/2013	21	0.004	0.002	0.003	-0.001	0.002	0.002	-0.001	0.003
1/15/2013	22	0.004	0.001	0.001	0.000	0.001	0.004	-0.001	0.003
1/15/2013	23	0.004	0.000	0.004	0.003	0.001	0.003	-0.001	-0.002
1/16/2013	0	0.004	0.002	0.005	0.002	0.002	0.003	0.000	0.000
1/16/2013	1	0.005	0.002	0.006	0.001	0.002	0.002	0.003	0.003
1/16/2013	2	0.006	0.002	0.005	-0.002	0.004	0.001	0.004	0.003
1/16/2013	3	---	---	0.005	0.000	0.007	0.002	0.001	0.001
1/16/2013	4	---	---	0.006	0.002	0.005	0.004	0.001	0.000
1/16/2013	5	---	---	0.006	0.001	0.004	0.003	-0.001	0.002
1/16/2013	6	---	---	0.005	0.001	0.006	0.004	-0.003	0.002
1/16/2013	7	---	---	0.003	0.002	0.007	0.004	0.000	0.005
1/16/2013	8	0.985	0.985	0.003	0.001	0.005	0.006	0.004	0.005
1/16/2013	9	-0.015	-0.015	---	---	0.005	0.005	0.004	0.002
1/16/2013	10	-0.012	-0.014	---	---	0.006	0.001	0.005	0.000
1/16/2013	11	-0.004	-0.012	---	---	0.003	0.002	0.019	0.003
1/16/2013	12	0.985	0.985	---	---	-0.002	0.003	0.037	0.005
1/16/2013	13	0.004	-0.010	---	---	-0.001	0.003	0.006	0.002
1/16/2013	14	0.005	-0.006	---	---	0.003	0.002	0.003	0.002
1/16/2013	15	0.005	-0.003	---	---	0.003	0.002	0.001	0.002
1/16/2013	16	0.001	-0.002	---	---	0.001	0.001	0.004	0.000
1/16/2013	17	0.002	-0.001	---	---	0.002	0.000	0.006	-0.001
1/16/2013	18	0.001	0.001	---	---	0.003	0.002	0.003	0.002
1/16/2013	19	0.003	0.002	---	---	0.006	0.002	-0.001	0.003
1/16/2013	20	0.011	0.002	---	---	0.004	0.001	0.000	0.001
1/16/2013	21	0.009	0.000	---	---	0.003	0.001	0.001	0.000
1/16/2013	22	0.005	0.000	---	---	0.005	0.000	0.001	0.000
1/16/2013	23	0.004	0.001	---	---	0.003	0.001	0.001	0.003



DESERT SUNLIGHT SOLAR FARM

TABLE 3 - HOURLY BAM DATA

(Please refer to Table 3 cover page for additional details.)

All values are in units of milligrams per cubic meter.

Date	Hour	North Station		East Station		South Station		West Station	
		PM10	PM2.5	PM10	PM2.5	PM10	PM2.5	PM10	PM2.5
1/17/2013	0	0.003	0.002	---	---	0.005	0.001	-0.001	0.002
1/17/2013	1	0.006	0.004	---	---	0.005	-0.001	0.001	0.000
1/17/2013	2	0.007	0.004	---	---	0.004	-0.001	0.001	0.004
1/17/2013	3	0.004	0.002	---	---	0.003	0.002	0.000	0.004
1/17/2013	4	0.005	0.000	---	---	0.003	0.003	0.001	0.003
1/17/2013	5	0.005	-0.002	---	---	0.005	0.003	-0.001	0.003
1/17/2013	6	0.004	0.001	---	---	0.008	0.002	0.000	0.004
1/17/2013	7	0.007	0.003	---	---	0.006	0.001	0.001	0.003
1/17/2013	8	0.008	0.002	---	---	0.006	-0.001	0.007	0.002
1/17/2013	9	0.008	0.002	---	---	0.006	-0.001	0.008	0.002
1/17/2013	10	0.005	0.001	---	---	0.003	0.000	0.005	0.002
1/17/2013	11	0.004	0.002	---	---	0.002	0.001	0.008	0.003
1/17/2013	12	0.003	0.002	---	---	0.003	0.004	0.009	0.003
1/17/2013	13	0.005	-0.001	---	---	0.003	0.002	0.009	0.002
1/17/2013	14	0.004	0.001	---	---	0.004	0.001	0.004	0.004
1/17/2013	15	0.003	0.002	---	---	0.004	0.001	0.005	0.005
1/17/2013	16	0.004	-0.001	---	---	0.003	0.001	0.059	0.003
1/17/2013	17	0.006	-0.002	---	---	0.006	0.001	-0.002	0.002
1/17/2013	18	0.005	0.000	---	---	0.006	0.000	-0.001	0.003
1/17/2013	19	0.003	0.002	---	---	0.006	0.000	0.003	0.004
1/17/2013	20	0.004	0.003	---	---	0.006	0.002	0.002	0.004
1/17/2013	21	0.006	0.004	---	---	0.004	0.001	0.003	0.004
1/17/2013	22	0.008	0.002	---	---	0.005	0.001	0.002	0.005
1/17/2013	23	0.009	0.003	---	---	0.006	0.001	-0.001	0.003
1/18/2013	0	0.007	0.002	---	---	0.005	0.001	0.004	0.002
1/18/2013	1	0.007	0.000	---	---	0.005	0.002	0.007	0.003
1/18/2013	2	0.007	0.001	---	---	0.007	0.001	0.003	0.002
1/18/2013	3	0.007	0.000	---	---	0.007	0.000	-0.001	0.003
1/18/2013	4	0.009	-0.002	---	---	0.005	0.003	-0.001	0.002
1/18/2013	5	0.008	-0.001	---	---	0.005	0.002	0.002	0.002
1/18/2013	6	0.007	0.002	---	---	0.004	0.002	0.001	0.002
1/18/2013	7	0.004	0.004	---	---	0.006	0.006	0.045	0.002
1/18/2013	8	0.001	0.004	---	---	0.008	0.006	0.003	0.005
1/18/2013	9	0.006	0.002	---	---	0.006	0.002	0.003	0.003
1/18/2013	10	0.009	0.000	---	---	0.005	0.000	0.002	0.000
1/18/2013	11	0.005	-0.003	---	---	0.005	-0.001	0.000	-0.001
1/18/2013	12	0.003	-0.003	---	---	0.002	-0.001	0.015	0.000
1/18/2013	13	0.003	-0.001	---	---	-0.002	-0.001	0.010	0.002
1/18/2013	14	0.003	-0.001	---	---	-0.001	-0.001	0.005	0.002
1/18/2013	15	0.005	0.000	---	---	0.000	0.001	0.000	0.000
1/18/2013	16	0.004	0.002	---	---	0.002	0.000	-0.001	-0.003
1/18/2013	17	0.001	0.002	---	---	0.005	0.001	-0.002	0.003
1/18/2013	18	0.003	0.003	---	---	0.007	0.003	-0.002	0.005
1/18/2013	19	0.009	0.003	---	---	0.006	0.005	-0.001	0.002
1/18/2013	20	0.007	0.002	---	---	0.003	0.003	-0.001	0.005
1/18/2013	21	0.003	0.000	---	---	0.003	0.001	-0.001	0.002
1/18/2013	22	0.006	0.000	---	---	0.005	0.003	0.000	0.000
1/18/2013	23	0.008	0.001	---	---	0.006	0.004	0.002	0.002



DESERT SUNLIGHT SOLAR FARM

TABLE 3 - HOURLY BAM DATA

(Please refer to Table 3 cover page for additional details.)

All values are in units of milligrams per cubic meter.

Date	Hour	North Station		East Station		South Station		West Station	
		PM10	PM2.5	PM10	PM2.5	PM10	PM2.5	PM10	PM2.5
1/19/2013	0	0.035	0.002	---	---	0.009	0.003	0.001	0.001
1/19/2013	1	0.005	0.003	---	---	0.009	0.002	-0.002	0.004
1/19/2013	2	0.007	0.002	---	---	0.007	0.002	-0.001	0.004
1/19/2013	3	0.011	0.003	---	---	0.007	0.003	0.000	0.002
1/19/2013	4	0.009	0.004	---	---	0.007	0.003	0.000	0.004
1/19/2013	5	0.005	0.001	---	---	0.004	0.000	-0.002	0.004
1/19/2013	6	0.005	0.000	---	---	0.004	0.002	-0.002	0.002
1/19/2013	7	0.007	0.000	---	---	0.003	0.003	-0.002	0.001
1/19/2013	8	0.007	0.000	---	---	0.003	0.001	0.000	0.001
1/19/2013	9	0.007	0.001	---	---	0.004	0.001	0.001	0.002
1/19/2013	10	0.003	0.000	---	---	0.003	0.001	0.000	0.003
1/19/2013	11	0.002	0.000	---	---	0.002	-0.001	-0.001	0.001
1/19/2013	12	0.004	0.001	---	---	0.002	-0.002	-0.005	-0.002
1/19/2013	13	0.003	0.001	---	---	0.002	0.000	-0.005	0.000
1/19/2013	14	0.004	0.000	---	---	0.003	0.000	-0.003	-0.001
1/19/2013	15	0.006	0.002	---	---	0.002	-0.002	0.000	0.000
1/19/2013	16	0.003	0.003	---	---	0.000	-0.002	0.001	-0.001
1/19/2013	17	-0.001	0.003	---	---	0.001	-0.001	0.000	0.000
1/19/2013	18	0.003	0.002	---	---	0.002	0.000	-0.001	0.003
1/19/2013	19	0.005	0.002	---	---	0.001	0.001	0.000	0.002
1/19/2013	20	0.005	0.006	---	---	0.004	0.001	-0.001	0.002
1/19/2013	21	0.007	0.005	---	---	0.005	0.003	-0.002	0.002
1/19/2013	22	0.009	-0.002	---	---	0.007	0.003	-0.002	0.001
1/19/2013	23	0.009	-0.003	---	---	0.010	0.002	-0.002	0.002
1/20/2013	0	0.009	0.000	---	---	0.007	0.003	-0.002	0.001
1/20/2013	1	0.012	0.000	---	---	0.006	0.003	-0.002	-0.001
1/20/2013	2	0.011	-0.002	---	---	0.007	0.003	-0.004	0.000
1/20/2013	3	0.008	-0.001	---	---	0.006	0.002	-0.002	0.002
1/20/2013	4	0.006	0.002	---	---	0.004	0.002	0.000	0.001
1/20/2013	5	0.005	0.002	---	---	0.005	0.001	0.000	0.002
1/20/2013	6	0.007	0.001	---	---	0.006	0.002	0.000	0.004
1/20/2013	7	0.006	0.001	---	---	0.004	0.002	0.000	0.002
1/20/2013	8	0.004	0.000	---	---	0.003	0.001	-0.001	0.002
1/20/2013	9	0.004	0.000	---	---	0.001	0.003	0.000	0.001
1/20/2013	10	0.004	0.002	---	---	-0.001	0.001	0.001	0.000
1/20/2013	11	0.005	0.000	---	---	0.000	-0.002	0.000	0.000
1/20/2013	12	0.004	-0.002	---	---	-0.001	0.000	-0.002	0.000
1/20/2013	13	0.004	-0.002	---	---	-0.001	0.000	-0.002	-0.001
1/20/2013	14	0.005	-0.002	---	---	-0.002	-0.001	-0.003	-0.002
1/20/2013	15	0.003	-0.001	---	---	-0.002	0.001	-0.002	-0.001
1/20/2013	16	0.002	-0.001	---	---	0.000	0.002	-0.002	0.001
1/20/2013	17	0.002	0.001	---	---	0.003	0.000	-0.003	0.001
1/20/2013	18	0.001	0.001	---	---	0.002	0.002	0.001	0.001
1/20/2013	19	0.005	0.002	---	---	0.005	0.003	0.001	0.000
1/20/2013	20	0.007	0.001	---	---	0.005	0.000	0.001	0.001
1/20/2013	21	0.006	-0.001	---	---	0.004	0.000	0.001	0.003
1/20/2013	22	0.009	0.000	---	---	0.005	0.002	0.001	0.004
1/20/2013	23	0.009	0.002	---	---	0.006	0.004	0.002	0.003



DESERT SUNLIGHT SOLAR FARM

TABLE 3 - HOURLY BAM DATA

(Please refer to Table 3 cover page for additional details.)

All values are in units of milligrams per cubic meter.

Date	Hour	North Station		East Station		South Station		West Station	
		PM10	PM2.5	PM10	PM2.5	PM10	PM2.5	PM10	PM2.5
1/21/2013	0	0.008	0.002	---	---	0.008	0.004	0.001	0.001
1/21/2013	1	0.009	0.002	---	---	0.007	0.002	0.001	0.001
1/21/2013	2	0.009	0.003	---	---	0.003	0.000	0.001	0.001
1/21/2013	3	0.011	0.002	---	---	0.003	0.001	0.002	0.001
1/21/2013	4	0.012	0.002	---	---	0.004	0.001	0.004	0.003
1/21/2013	5	0.006	0.000	---	---	0.005	0.000	0.003	0.003
1/21/2013	6	0.002	0.000	---	---	0.004	0.001	0.002	0.000
1/21/2013	7	0.004	0.000	---	---	0.016	0.004	-0.001	0.002
1/21/2013	8	0.007	0.000	---	---	0.009	0.005	0.001	0.000
1/21/2013	9	0.005	0.000	---	---	0.010	0.002	0.003	0.000
1/21/2013	10	0.005	0.000	---	---	0.006	-0.001	0.001	0.001
1/21/2013	11	0.004	0.004	---	---	0.003	-0.004	0.002	0.000
1/21/2013	12	0.000	0.001	---	---	0.000	-0.001	0.003	-0.001
1/21/2013	13	0.003	-0.005	---	---	-0.001	0.001	0.000	0.002
1/21/2013	14	0.006	-0.003	---	---	0.003	0.000	0.000	0.003
1/21/2013	15	0.002	-0.001	---	---	0.004	0.001	0.000	0.001
1/21/2013	16	0.002	-0.001	---	---	0.007	0.001	0.002	0.002
1/21/2013	17	0.002	-0.002	---	---	0.008	0.001	0.003	0.003
1/21/2013	18	0.003	0.000	---	---	0.006	0.003	-0.001	0.003
1/21/2013	19	0.028	0.001	---	---	0.004	0.002	-0.004	0.002
1/21/2013	20	0.006	0.002	---	---	0.006	0.003	-0.003	0.001
1/21/2013	21	0.005	0.003	---	---	0.006	0.003	-0.002	-0.002
1/21/2013	22	0.003	0.002	---	---	0.005	0.001	-0.002	-0.001
1/21/2013	23	0.006	0.001	---	---	0.005	0.001	0.001	0.003
1/22/2013	0	0.009	-0.001	---	---	0.007	0.001	0.002	0.003
1/22/2013	1	0.019	0.000	---	---	0.010	0.003	0.002	0.002
1/22/2013	2	0.006	0.000	---	---	0.008	0.000	0.001	0.001
1/22/2013	3	0.007	-0.001	---	---	0.006	-0.002	-0.001	0.002
1/22/2013	4	0.008	-0.001	---	---	0.006	-0.001	0.000	0.002
1/22/2013	5	0.006	0.000	---	---	0.006	0.000	0.000	0.001
1/22/2013	6	0.006	0.001	---	---	0.004	-0.001	0.000	0.003
1/22/2013	7	0.006	0.001	---	---	0.008	-0.003	0.001	0.004
1/22/2013	8	0.006	0.002	---	---	0.010	-0.001	0.001	0.001
1/22/2013	9	0.007	0.001	---	---	0.006	0.001	0.002	-0.001
1/22/2013	10	0.008	-0.001	---	---	0.004	0.000	0.004	0.000
1/22/2013	11	0.005	0.000	---	---	0.001	0.000	0.003	0.000
1/22/2013	12	0.003	0.001	---	---	0.000	0.000	-0.001	-0.003
1/22/2013	13	0.002	0.001	---	---	0.001	-0.001	0.001	-0.003
1/22/2013	14	0.002	0.002	---	---	0.001	0.000	0.002	0.000
1/22/2013	15	-0.001	0.000	---	---	-0.001	0.000	-0.001	0.000
1/22/2013	16	-0.002	-0.001	---	---	0.005	0.000	-0.002	0.000
1/22/2013	17	0.019	-0.001	---	---	0.024	0.003	0.000	-0.001
1/22/2013	18	0.006	0.000	---	---	0.014	0.006	0.002	0.001
1/22/2013	19	0.006	-0.001	---	---	0.010	0.004	0.002	0.004
1/22/2013	20	0.005	-0.001	---	---	0.007	0.002	0.002	0.004
1/22/2013	21	0.005	0.000	---	---	0.005	0.002	0.004	0.004
1/22/2013	22	0.004	0.000	---	---	0.001	0.001	0.003	0.001
1/22/2013	23	0.002	0.002	---	---	0.001	0.000	0.000	-0.001



DESERT SUNLIGHT SOLAR FARM

TABLE 3 - HOURLY BAM DATA

(Please refer to Table 3 cover page for additional details.)

All values are in units of milligrams per cubic meter.

Date	Hour	North Station		East Station		South Station		West Station	
		PM10	PM2.5	PM10	PM2.5	PM10	PM2.5	PM10	PM2.5
1/23/2013	0	0.000	0.003	---	---	0.002	0.000	-0.001	0.000
1/23/2013	1	0.006	0.000	---	---	0.002	-0.001	-0.002	0.001
1/23/2013	2	0.006	-0.001	---	---	0.002	-0.001	0.000	0.001
1/23/2013	3	0.004	0.001	---	---	0.002	0.000	0.000	0.000
1/23/2013	4	0.007	-0.001	---	---	0.000	0.002	0.002	0.000
1/23/2013	5	0.005	0.000	---	---	-0.002	0.001	0.002	0.001
1/23/2013	6	0.006	0.002	---	---	0.001	0.000	0.002	0.003
1/23/2013	7	0.007	0.002	---	---	0.004	0.000	0.002	0.003
1/23/2013	8	0.007	0.000	---	---	0.006	0.001	0.002	0.002
1/23/2013	9	0.007	-0.002	---	---	0.006	0.002	0.000	0.001
1/23/2013	10	0.007	-0.002	---	---	0.004	0.000	-0.002	-0.015
1/23/2013	11	0.007	-0.001	---	---	0.005	-0.001	0.000	-0.003
1/23/2013	12	0.003	0.000	---	---	0.004	-0.002	0.000	-0.001
1/23/2013	13	0.002	0.001	---	---	0.004	-0.001	0.000	0.002
1/23/2013	14	0.006	0.000	---	---	0.005	0.000	0.001	0.002
1/23/2013	15	0.005	-0.001	---	---	0.007	-0.001	0.001	0.001
1/23/2013	16	0.005	0.000	---	---	0.007	0.000	0.004	0.000
1/23/2013	17	0.007	0.001	---	---	0.009	0.002	0.005	0.002
1/23/2013	18	0.007	0.002	---	---	0.009	0.000	0.001	0.004
1/23/2013	19	0.008	0.002	---	---	0.008	0.000	-0.003	0.005
1/23/2013	20	0.007	0.002	---	---	0.006	0.003	-0.002	0.002
1/23/2013	21	0.006	0.002	---	---	0.003	0.001	0.000	0.002
1/23/2013	22	0.006	0.002	---	---	0.003	0.002	0.000	0.002
1/23/2013	23	0.003	0.001	---	---	0.001	0.004	0.000	0.000
1/24/2013	0	0.003	0.002	---	---	0.002	0.000	0.000	0.002
1/24/2013	1	0.006	0.002	---	---	0.003	0.000	0.001	0.005
1/24/2013	2	0.005	0.001	---	---	0.001	0.000	0.002	0.001
1/24/2013	3	0.006	0.002	---	---	0.001	-0.002	0.003	-0.001
1/24/2013	4	---	---	---	---	0.002	0.000	0.000	0.001
1/24/2013	5	---	---	---	---	0.003	-0.001	-0.001	-0.001
1/24/2013	6	---	---	---	---	0.003	-0.002	0.002	-0.001
1/24/2013	7	---	---	---	---	0.006	-0.001	0.001	0.000
1/24/2013	8	---	---	---	---	---	---	0.003	0.002
1/24/2013	9	---	---	---	---	---	---	0.005	0.004
1/24/2013	10	0.985	0.985	---	---	---	---	0.002	0.003
1/24/2013	11	-0.010	-0.009	---	---	---	---	0.000	0.000
1/24/2013	12	-0.005	-0.008	---	---	---	---	0.000	0.002
1/24/2013	13	0.002	-0.006	---	---	0.005	0.002	-0.002	0.004
1/24/2013	14	0.005	-0.004	---	---	0.003	0.002	-0.003	0.003
1/24/2013	15	0.006	-0.003	---	---	0.005	0.002	-0.001	0.004
1/24/2013	16	0.008	-0.002	---	---	0.007	0.005	-0.001	0.005
1/24/2013	17	0.012	0.001	---	---	0.007	0.006	0.001	0.004
1/24/2013	18	0.012	0.002	---	---	0.008	0.005	0.000	0.004
1/24/2013	19	0.009	0.001	---	---	0.008	0.004	0.000	0.003
1/24/2013	20	0.009	0.002	---	---	0.006	0.004	0.002	0.001
1/24/2013	21	0.009	0.003	---	---	0.006	0.003	0.002	-0.001
1/24/2013	22	0.009	0.001	---	---	0.007	0.003	0.003	0.001
1/24/2013	23	0.006	0.001	---	---	0.007	0.003	0.003	0.006



DESERT SUNLIGHT SOLAR FARM

TABLE 3 - HOURLY BAM DATA

(Please refer to Table 3 cover page for additional details.)

All values are in units of milligrams per cubic meter.

Date	Hour	North Station		East Station		South Station		West Station	
		PM10	PM2.5	PM10	PM2.5	PM10	PM2.5	PM10	PM2.5
1/25/2013	0	0.017	0.003	---	---	0.004	0.002	0.002	0.006
1/25/2013	1	0.009	0.001	---	---	0.001	0.003	0.003	0.001
1/25/2013	2	0.009	0.000	---	---	0.004	0.002	0.002	0.002
1/25/2013	3	0.009	0.000	---	---	0.005	0.001	0.001	0.004
1/25/2013	4	0.007	0.001	---	---	0.004	0.004	0.001	0.007
1/25/2013	5	0.006	0.003	---	---	0.006	0.004	0.002	0.006
1/25/2013	6	0.007	0.002	---	---	0.008	0.002	0.002	0.003
1/25/2013	7	0.006	0.001	---	---	0.007	-0.001	0.001	0.001
1/25/2013	8	0.006	0.000	---	---	0.006	0.002	0.002	0.003
1/25/2013	9	---	---	---	---	0.004	0.006	0.001	0.004
1/25/2013	10	0.985	0.985	---	---	0.003	0.004	0.003	0.002
1/25/2013	11	-0.004	0.985	---	---	0.004	0.004	0.001	0.003
1/25/2013	12	0.002	0.000	---	---	0.003	0.002	-0.002	0.003
1/25/2013	13	0.006	0.002	---	---	0.002	0.003	0.985	0.985
1/25/2013	14	0.004	0.000	---	---	0.006	0.005	0.985	0.985
1/25/2013	15	0.007	0.000	---	---	0.005	0.004	0.985	0.985
1/25/2013	16	0.008	0.002	---	---	0.003	0.003	0.000	0.004
1/25/2013	17	0.007	0.002	---	---	0.006	0.005	0.002	0.006
1/25/2013	18	0.008	0.004	---	---	0.006	0.006	0.003	0.006
1/25/2013	19	0.011	0.005	---	---	0.004	0.006	0.002	0.005
1/25/2013	20	0.012	0.003	---	---	0.006	0.005	0.000	0.006
1/25/2013	21	0.010	0.001	---	---	0.008	0.006	-0.003	0.007
1/25/2013	22	0.009	0.002	---	---	0.005	0.010	-0.003	0.007
1/25/2013	23	0.008	0.003	---	---	0.000	0.008	-0.001	0.007
1/26/2013	0	0.008	0.002	---	---	0.002	0.006	-0.001	0.007
1/26/2013	1	0.008	-0.001	---	---	0.003	0.007	-0.001	0.006
1/26/2013	2	0.007	0.002	---	---	0.004	0.007	0.002	0.004
1/26/2013	3	0.009	0.003	---	---	0.004	0.007	0.004	0.002
1/26/2013	4	0.008	0.001	---	---	0.002	0.006	-0.001	0.002
1/26/2013	5	0.006	0.002	---	---	0.000	0.006	-0.002	0.003
1/26/2013	6	0.004	0.000	---	---	0.001	0.006	-0.001	0.004
1/26/2013	7	0.005	-0.001	---	---	0.005	0.006	-0.001	0.004
1/26/2013	8	0.005	0.000	---	---	0.003	0.006	-0.001	0.005
1/26/2013	9	0.008	0.002	---	---	0.000	0.005	-0.002	0.003
1/26/2013	10	0.011	0.001	---	---	0.003	0.005	0.000	0.006
1/26/2013	11	0.008	0.000	---	---	0.001	0.003	0.001	0.006
1/26/2013	12	0.008	-0.002	---	---	0.000	0.003	0.001	0.003
1/26/2013	13	0.007	-0.001	---	---	-0.001	0.004	0.002	0.000
1/26/2013	14	0.005	0.002	---	---	-0.004	0.004	-0.001	0.000
1/26/2013	15	0.004	0.002	---	---	0.002	0.006	-0.001	0.004
1/26/2013	16	0.005	0.001	---	---	0.006	0.006	0.000	0.007
1/26/2013	17	0.006	0.001	---	---	0.004	0.005	0.001	0.006
1/26/2013	18	0.005	0.003	---	---	0.002	0.005	0.000	0.004
1/26/2013	19	0.006	0.003	---	---	0.001	0.004	-0.002	0.002
1/26/2013	20	0.008	0.002	---	---	0.001	0.005	-0.003	0.001
1/26/2013	21	0.005	0.003	---	---	0.004	0.004	0.001	0.004
1/26/2013	22	0.006	0.003	---	---	0.008	0.007	0.005	0.007
1/26/2013	23	0.007	0.004	---	---	0.009	0.012	0.004	0.007



DESERT SUNLIGHT SOLAR FARM

TABLE 3 - HOURLY BAM DATA

(Please refer to Table 3 cover page for additional details.)

All values are in units of milligrams per cubic meter.

Date	Hour	North Station		East Station		South Station		West Station	
		PM10	PM2.5	PM10	PM2.5	PM10	PM2.5	PM10	PM2.5
1/27/2013	0	0.007	0.005	---	---	0.006	0.010	0.004	0.007
1/27/2013	1	0.009	0.004	---	---	0.004	0.008	0.003	0.007
1/27/2013	2	0.007	0.002	---	---	0.005	0.007	0.001	0.006
1/27/2013	3	0.005	-0.001	---	---	0.005	0.005	0.002	0.005
1/27/2013	4	0.003	-0.001	---	---	0.006	0.005	0.002	0.005
1/27/2013	5	0.004	0.002	---	---	0.008	0.005	0.003	0.006
1/27/2013	6	0.005	0.005	---	---	0.007	0.006	0.002	0.006
1/27/2013	7	0.006	0.005	---	---	0.006	0.007	0.001	0.007
1/27/2013	8	0.008	0.005	---	---	0.006	0.006	0.001	0.007
1/27/2013	9	0.006	0.007	---	---	0.008	0.007	0.001	0.006
1/27/2013	10	0.008	0.004	---	---	0.003	0.006	0.002	0.004
1/27/2013	11	0.009	0.003	---	---	0.001	0.004	0.001	0.004
1/27/2013	12	0.006	0.001	---	---	0.003	0.003	0.000	0.004
1/27/2013	13	0.006	0.000	---	---	0.000	0.003	0.001	0.003
1/27/2013	14	0.003	0.002	---	---	-0.001	0.003	0.000	0.003
1/27/2013	15	-0.001	0.001	---	---	0.002	0.001	0.000	-0.001
1/27/2013	16	0.002	-0.001	---	---	0.003	0.001	0.001	0.002
1/27/2013	17	0.003	0.000	---	---	0.003	0.003	-0.001	0.006
1/27/2013	18	0.006	0.003	---	---	0.006	0.003	-0.001	0.003
1/27/2013	19	0.013	0.002	---	---	0.016	0.005	0.002	0.005
1/27/2013	20	0.014	0.002	---	---	0.011	0.006	0.003	0.007
1/27/2013	21	0.017	0.002	---	---	0.012	0.006	0.005	0.006
1/27/2013	22	0.007	0.004	---	---	0.009	0.007	0.005	0.003
1/27/2013	23	0.010	0.005	---	---	0.007	0.005	0.004	0.002
1/28/2013	0	0.011	0.003	---	---	0.004	0.004	0.002	0.004
1/28/2013	1	0.009	0.003	---	---	0.003	0.002	0.001	0.004
1/28/2013	2	0.008	0.003	---	---	0.007	0.001	0.001	0.003
1/28/2013	3	0.007	0.002	---	---	0.006	0.004	0.001	0.003
1/28/2013	4	0.008	0.003	---	---	0.004	0.004	0.002	0.004
1/28/2013	5	0.008	0.003	---	---	0.004	0.003	0.002	0.004
1/28/2013	6	0.007	0.002	---	---	0.004	0.002	0.002	0.004
1/28/2013	7	0.007	0.003	---	---	0.004	0.001	0.002	0.003
1/28/2013	8	0.006	0.002	---	---	0.005	0.000	0.002	0.003
1/28/2013	9	0.008	0.000	---	0.985	0.008	0.000	0.005	0.004
1/28/2013	10	0.008	0.003	---	0.985	0.016	0.000	0.005	0.004
1/28/2013	11	0.008	0.004	---	0.003	0.007	0.001	0.005	0.004
1/28/2013	12	0.007	0.001	---	0.004	0.006	0.001	0.005	0.004
1/28/2013	13	0.004	0.000	---	-0.001	0.005	0.001	0.006	0.004
1/28/2013	14	0.004	0.001	---	-0.001	0.016	0.001	0.002	0.005
1/28/2013	15	0.005	0.001	---	0.002	0.006	0.000	0.001	0.005
1/28/2013	16	0.004	0.003	---	0.000	0.008	0.002	0.005	0.003
1/28/2013	17	0.000	0.002	---	0.000	0.006	0.002	0.002	0.003
1/28/2013	18	0.000	-0.002	---	0.002	0.000	0.000	-0.002	0.000
1/28/2013	19	0.005	0.000	---	0.002	0.001	0.001	-0.001	0.000
1/28/2013	20	0.005	0.001	---	0.002	0.002	0.002	-0.001	0.000
1/28/2013	21	0.003	-0.001	---	0.002	0.001	0.002	0.000	0.000
1/28/2013	22	0.006	-0.001	---	0.003	0.001	0.002	0.002	-0.001
1/28/2013	23	0.009	0.000	---	0.005	0.002	0.002	0.002	-0.001



DESERT SUNLIGHT SOLAR FARM

TABLE 3 - HOURLY BAM DATA

(Please refer to Table 3 cover page for additional details.)

All values are in units of milligrams per cubic meter.

Date	Hour	North Station		East Station		South Station		West Station	
		PM10	PM2.5	PM10	PM2.5	PM10	PM2.5	PM10	PM2.5
1/29/2013	0	0.008	0.000	---	0.004	0.005	0.004	0.000	0.003
1/29/2013	1	0.007	0.002	---	0.004	0.005	0.004	0.000	0.005
1/29/2013	2	0.007	0.004	---	0.004	0.002	0.003	0.001	0.004
1/29/2013	3	0.007	0.005	---	0.005	0.003	0.003	0.000	0.004
1/29/2013	4	0.007	0.005	---	0.002	0.006	0.001	0.002	0.004
1/29/2013	5	0.009	0.002	---	0.002	0.027	0.001	0.001	0.005
1/29/2013	6	0.008	0.002	---	0.006	0.000	0.005	0.000	0.003
1/29/2013	7	0.009	0.003	---	0.007	0.001	0.005	0.000	0.004
1/29/2013	8	0.007	0.004	---	0.005	0.005	0.004	0.002	0.005
1/29/2013	9	0.006	0.004	---	-0.015	0.008	0.004	0.003	0.002
1/29/2013	10	0.006	0.005	---	0.002	0.046	0.005	-0.015	-0.015
1/29/2013	11	0.005	0.006	---	0.003	0.031	0.005	0.001	0.004
1/29/2013	12	0.006	0.003	---	0.005	0.089	0.000	0.000	0.001
1/29/2013	13	0.007	0.002	---	0.006	0.000	-0.001	0.000	0.001
1/29/2013	14	0.009	0.002	---	0.004	-0.001	0.002	-0.001	0.004
1/29/2013	15	0.011	0.002	---	0.001	-0.001	0.001	-0.003	0.002
1/29/2013	16	0.008	0.002	---	0.000	0.003	0.002	-0.001	0.002
1/29/2013	17	0.006	0.002	---	0.002	0.022	0.006	-0.002	0.001
1/29/2013	18	0.008	0.002	---	0.003	0.005	0.006	-0.001	0.003
1/29/2013	19	0.010	0.003	---	0.004	0.006	0.005	0.002	0.008
1/29/2013	20	0.007	0.002	---	0.002	0.007	0.005	0.003	0.007
1/29/2013	21	0.007	0.002	---	0.002	0.006	0.004	0.001	0.006
1/29/2013	22	0.008	0.003	---	0.003	0.007	0.005	0.001	0.004
1/29/2013	23	0.010	0.004	---	0.000	0.006	0.004	0.001	0.002
1/30/2013	0	0.012	0.002	---	0.003	0.004	0.003	0.001	0.003
1/30/2013	1	0.009	-0.002	---	0.006	0.006	0.006	0.001	0.003
1/30/2013	2	0.008	0.000	---	0.002	0.006	0.004	0.002	0.002
1/30/2013	3	0.010	0.003	---	---	0.006	0.002	0.002	0.004
1/30/2013	4	0.015	0.004	---	---	0.008	0.004	0.002	0.005
1/30/2013	5	0.015	0.003	---	---	---	---	0.004	0.003
1/30/2013	6	0.018	0.004	---	---	---	---	0.005	0.003
1/30/2013	7	0.021	0.004	---	---	---	---	0.006	0.005
1/30/2013	8	0.018	0.002	---	0.985	0.985	0.985	0.006	0.004
1/30/2013	9	0.020	0.000	---	-0.013	0.006	-0.015	0.003	0.003
1/30/2013	10	0.022	-0.001	---	-0.010	0.009	-0.006	---	---
1/30/2013	11	0.023	-0.001	---	-0.007	0.020	-0.004	---	---
1/30/2013	12	0.020	-0.001	---	-0.006	0.015	0.000	---	---
1/30/2013	13	0.012	0.000	---	-0.004	0.012	0.003	---	---
1/30/2013	14	0.012	0.002	---	-0.003	0.006	0.001	---	---
1/30/2013	15	0.017	0.000	---	0.000	0.005	0.002	---	---
1/30/2013	16	0.011	-0.003	---	0.002	0.008	0.001	---	---
1/30/2013	17	0.006	-0.001	---	0.002	0.009	0.000	---	---
1/30/2013	18	0.004	0.003	---	0.006	0.007	0.001	---	---
1/30/2013	19	0.008	0.004	---	0.005	0.007	0.001	---	---
1/30/2013	20	0.007	0.003	---	0.001	0.007	0.003	---	---
1/30/2013	21	0.006	0.002	---	0.002	0.006	0.002	---	---
1/30/2013	22	0.007	0.002	---	0.004	0.003	0.000	---	---
1/30/2013	23	0.007	0.002	---	0.006	0.004	0.000	---	---



DESERT SUNLIGHT SOLAR FARM

TABLE 3 - HOURLY BAM DATA

(Please refer to Table 3 cover page for additional details.)

All values are in units of milligrams per cubic meter.

Date	Hour	North Station		East Station		South Station		West Station	
		PM10	PM2.5	PM10	PM2.5	PM10	PM2.5	PM10	PM2.5
1/31/2013	0	0.005	0.001	---	0.004	0.008	0.000	---	---
1/31/2013	1	0.006	-0.002	---	0.001	0.007	0.001	---	---
1/31/2013	2	0.008	0.000	---	0.002	0.005	0.002	---	---
1/31/2013	3	0.008	0.002	---	0.005	0.007	0.003	---	---
1/31/2013	4	0.008	0.000	---	0.003	0.006	0.004	---	---
1/31/2013	5	0.009	-0.001	---	0.002	0.005	0.002	---	---
1/31/2013	6	0.006	0.001	---	0.004	0.005	0.002	---	---
1/31/2013	7	0.003	-0.001	---	0.003	0.005	0.002	---	---
1/31/2013	8	0.008	0.000	---	0.000	0.007	0.003	---	---
1/31/2013	9	0.009	0.002	---	-0.001	0.009	0.003	---	---
1/31/2013	10	0.008	0.001	---	0.000	0.008	-0.001	---	---
1/31/2013	11	0.009	0.000	---	-0.001	0.004	0.001	---	---
1/31/2013	12	0.985	0.000	---	-0.003	0.004	0.003	---	---
1/31/2013	13	0.009	0.985	---	0.000	0.006	0.001	---	---
1/31/2013	14	0.985	0.985	---	0.000	0.008	0.000	---	---
1/31/2013	15	0.006	0.000	---	0.000	0.007	-0.001	---	---
1/31/2013	16	0.003	-0.001	---	0.002	0.003	0.000	---	---
1/31/2013	17	0.004	-0.001	---	0.001	0.004	0.000	---	---
1/31/2013	18	0.018	-0.001	---	0.003	0.005	0.000	---	---
1/31/2013	19	0.011	0.001	---	0.004	0.007	0.001	---	---
1/31/2013	20	0.007	0.001	---	0.002	0.007	0.001	---	---
1/31/2013	21	0.006	0.000	---	0.000	0.005	0.003	---	---
1/31/2013	22	0.006	0.002	---	0.001	0.006	0.004	---	---
1/31/2013	23	0.004	0.002	---	0.002	0.004	0.000	---	---



Table 4

Monitored Constituents

The table below shows the sample dates. Table 4 is on the following page.

Station	Week	Sample Date	Sample ID	Work Order	Duration
North	Week 1	1/2/2013	QFF 12-265	1300834	20.25
	Week 2	1/9/2013	QFF 12-261	1301550	19
	Week 3	1/15/2013	QFF 12-257	1302138	18.75
	Week 4	1/23/2013	QFF 13-010	1302854	17.75
	Week 5	1/29/2013	QFF 13-014	1303539	24
East	Week 1	1/2/2013	QFF 12-266	1300835	24
	Week 2	1/9/2013	QFF 12-262	1301551	24
	Week 3	1/15/2013	QFF 12-258	1302139	24
	Week 4	1/23/2013	QFF 12-254	1302857	24
	Week 5	1/29/2013	QFF 13-013	1303538	19.25
West	Week 1	1/2/2013	QFF 12-264	1300833	24
	Week 2	1/9/2013	QFF 12-260	1301549	24
	Week 3	1/15/2013	QFF 12-256	1302137	24
	Week 4	1/23/2013	QFF 13-011	1302853	24
	Week 5	1/29/2013	QFF 13-015	1303540	24
South	Week 1	1/2/2013	QFF 12-267	1300836	22.15
	Week 2	1/9/2013	QFF 12-263	1301552	24
	Week 3	1/15/2013	QFF 12-259	1302140	24
	Week 4	1/23/2013	QFF 12-255	1302852	24
	Week 5	1/29/2013	QFF 13-012	1303537	21



Table 4: Monitored Constituents See Footnotes

Analyte	Week	North Station	East Station	West Station	South Station
Elemental Carbon	Week 1	0.22	0.2	0.15	0.18
	Week 2	0.38	0.33	0.38	0.3
	Week 3	0.23	0.13	0.64	0.18
	Week 4	0.37	0.25	0.55	0.29
	Week 5	0.11	0.074	0.32	0.18
Arsenic	Week 1	< LOD	< LOD	< LOD	< LOD
	Week 2	0.024	< LOD	< LOD	< LOD
	Week 3	< LOD	< LOD	< LOD	< LOD
	Week 4	< LOD	< LOD	< LOD	< LOD
	Week 5	< LOD	< LOD	< LOD	< LOD
Beryllium	Week 1	< LOD	< LOD	< LOD	< LOD
	Week 2	< LOD	< LOD	< LOD	< LOD
	Week 3	< LOD	< LOD	< LOD	< LOD
	Week 4	< LOD	< LOD	< LOD	< LOD
	Week 5	< LOD	< LOD	< LOD	< LOD
Cadmium	Week 1	< LOD	< LOD	< LOD	< LOD
	Week 2	< LOD	< LOD	< LOD	< LOD
	Week 3	< LOD	< LOD	< LOD	< LOD
	Week 4	< LOD	< LOD	< LOD	< LOD
	Week 5	< LOD	< LOD	< LOD	< LOD
Copper	Week 1	0.031	0.037	0.012	0.01
	Week 2	0.038	0.043	0.033	0.021
	Week 3	0.063	0.07	0.028	0.011
	Week 4	0.047	0.074	0.037	0.015
	Week 5	0.17	0.095	0.03	0.015
Lead	Week 1	< LOD	< LOD	< LOD	< LOD
	Week 2	< LOD	< LOD	< LOD	< LOD
	Week 3	< LOD	< LOD	< LOD	< LOD
	Week 4	< LOD	< LOD	< LOD	< LOD
	Week 5	< LOD	< LOD	< LOD	< LOD
Manganese	Week 1	0.0037	0.0022	0.0021	0.0041
	Week 2	0.0046	0.0076	0.0096	0.0094
	Week 3	0.0039	0.003	0.019	0.0045
	Week 4	0.0064	0.0056	0.0084	0.011
	Week 5	0.014	0.0066	0.016	0.016
Nickel	Week 1	< LOD	< LOD	< LOD	< LOD
	Week 2	< LOD	< LOD	< LOD	< LOD
	Week 3	< LOD	< LOD	< LOD	< LOD
	Week 4	< LOD	< LOD	< LOD	< LOD
	Week 5	< LOD	< LOD	< LOD	< LOD
Selenium	Week 1	0.03	0.024	0.019	0.02
	Week 2	< LOD	< LOD	< LOD	< LOD
	Week 3	< LOD	< LOD	< LOD	< LOD
	Week 4	0.022	< LOD	0.022	0.021
	Week 5	< LOD	< LOD	< LOD	< LOD

Note 1: All values are in units of micrograms per cubic meter.

Note 2: < LOD = Less than Limit of Detection (LOD).

Note 3: Sample dates are shown in the cover page for this table.

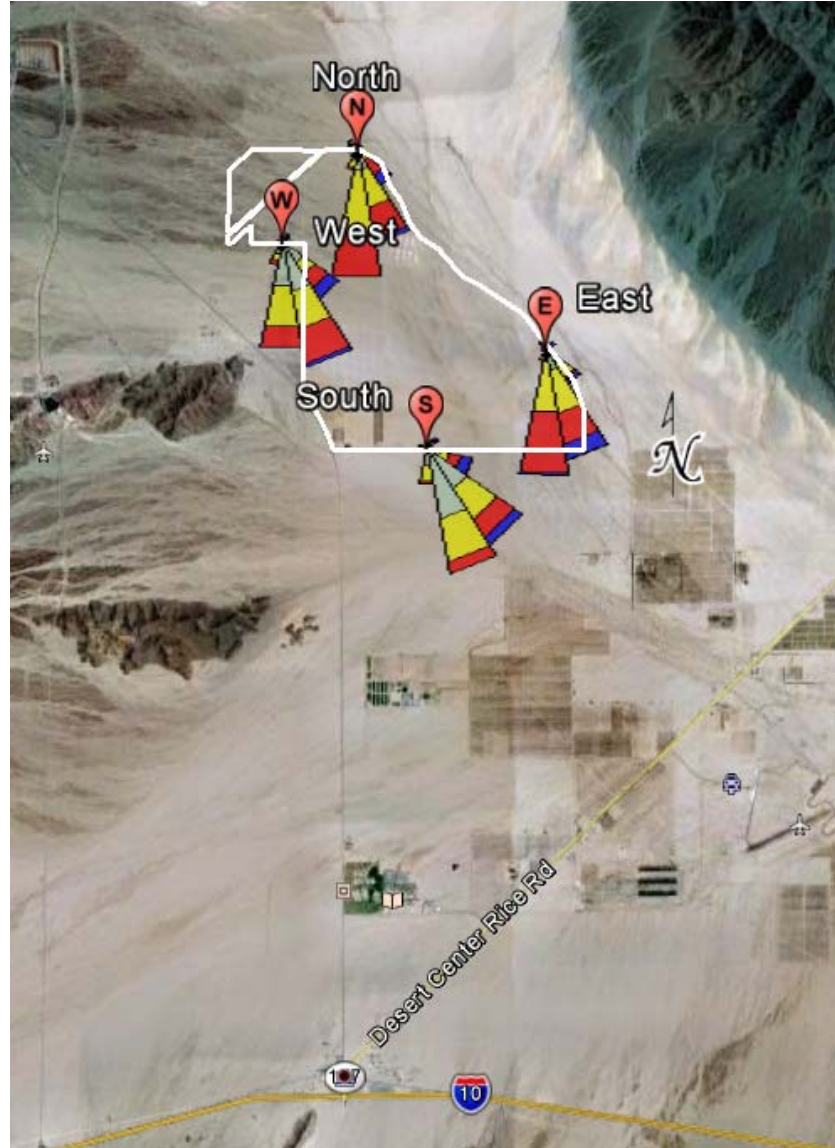


Figure 1: Meteorological Data Summary

The triangles in Figure 1 indicate the direction the wind was blowing **to** rather than **from**. The table below provides a brief explanation of the various wind speed classes.

Color	Wind Speed (knots)
Cyan	≥ 22 knots
Green	17 – 21 knots
Blue	11 – 17 knots
Red	7 – 11 knots
Yellow	4 – 7 knots
Light Green	1 – 4 knots