

DOCKETED

Docket Number:	09-AFC-07C
Project Title:	Palen Solar Power Project - Compliance
TN #:	201288
Document Title:	Exh 3076 Desert Sunlight Air Quality Monitoring Report Nov. 2012
Description:	AQ Monitoring report
Filer:	Ileene Anderson
Organization:	Center for Biological Diversity
Submitter Role:	Intervenor
Submission Date:	11/21/2013 4:22:58 PM
Docketed Date:	11/21/2013

**Desert Sunlight Solar Farm
Air Quality Monitoring Report**

November 2012





Report Index

Tables/Figures

Number	Table/Figure Name
Table 1	PM10 24-hour Time-Weighted Averages, All Sites
Table 2	PM2.5 24-hour Time-Weighted Averages, All Sites
Table 3	Hourly BAM Data, All Sites
Table 4	Monitored Constituents
Figure 1	Meteorological Data Summary



**Table 1: PM10 24-hour Time-Weighted Averages, All Sites
(See Footnotes)**

All values are in units of micrograms per cubic meter.

Date	North Station	East Station	South Station	West Station
11/1/2012	31	16	25	57
11/2/2012	12	12	13	11
11/3/2012	12	14	12	11
11/4/2012	9	10	10	8
11/5/2012	7	7	16	8
11/6/2012	7	7	12	5
11/7/2012	9	8	11	7
11/8/2012	26	32	31	24
11/9/2012	71	56	43	31
11/10/2012	19	20	45	16
11/11/2012	9	11	8	7
11/12/2012	11	11	21	8
11/13/2012	8	9	19	7
11/14/2012	7	12	10	5
11/15/2012	10	13	10	6
11/16/2012	9	9	9	6
11/17/2012	20	21	18	18
11/18/2012	5	3	3	3
11/19/2012	6	10	7	5
11/20/2012	45	37	6	6
11/21/2012	6	7	13	6
11/22/2012	9	9	12	7
11/23/2012	9	8	8	6
11/24/2012	9	10	7	9
11/25/2012	10	12	8	11
11/26/2012	10	11	14	8
11/27/2012	9	15	10	8
11/28/2012	11	13	11	11
11/29/2012	12	13	12	11
11/30/2012	7	5	4	3

Note 1: Please refer to Table 3 for the raw hourly data and treatment of valid and invalid values. All values in the above table are at actual conditions.

Note 2: Days marked 'No Data' are days for which there is no hourly data.

Note 3: Days marked (---) are days for which there is either more than 7 hours of negative data points or more than 12 hours of invalid data points.



**Table 2: PM2.5 24-hour Time-Weighted Averages, All Sites
(See Footnotes)**

All values are in units of micrograms per cubic meter.

Date	North Station	East Station	South Station	West Station
11/1/2012	3.8	1.9	---	30.6
11/2/2012	5.1	4	---	4.6
11/3/2012	4.8	3.8	4.6	4.2
11/4/2012	3.1	1.9	3.8	3
11/5/2012	3.3	1.3	---	3.5
11/6/2012	2.8	0.5	---	1.8
11/7/2012	2.3	1	---	2
11/8/2012	6.1	4.2	6	5.6
11/9/2012	5.1	10.5	3.9	5.1
11/10/2012	5.3	2.4	4.4	4.1
11/11/2012	4.6	3.3	2.2	2.8
11/12/2012	4.4	3.7	2.9	4.2
11/13/2012	4.3	4.7	3	3.3
11/14/2012	4	3.4	1.6	1.5
11/15/2012	4.4	3.5	1	2.8
11/16/2012	4.3	1.4	2.6	2.6
11/17/2012	6.7	4.8	3.1	4.6
11/18/2012	2.7	2.5	2.8	---
11/19/2012	3.4	1.7	3	---
11/20/2012	3.3	1.2	2.3	3.7
11/21/2012	2.2	1.4	1.8	2.5
11/22/2012	3.8	2.1	2.3	2.5
11/23/2012	3.8	1	2	2.5
11/24/2012	3.4	1.8	1.1	1.1
11/25/2012	2.5	2.5	2.3	2.2
11/26/2012	5.1	3.8	3.1	2.7
11/27/2012	4	3.8	2.8	3
11/28/2012	4.9	4.2	4.6	4.3
11/29/2012	5	3.7	4.5	3.6
11/30/2012	1.4	1.1	1.8	1.1

Note 1: Please refer to Table 3 for the raw hourly data and treatment of valid and invalid values. All values in the above table are at actual conditions.

Note 2: Days marked 'No Data' are days for which there is no hourly data.

Note 3: Days marked (---) are days for which there is either more than 7 hours of negative data points or more than 12 hours of invalid data points.



Table 3

Hourly BAM Data, All Stations

Please note the following:

1. PM10 and PM2.5 are at actual conditions.
2. Hours for which there are no BAM data are marked "---"
3. Data marked with **bold red** text is invalid due to either an error code produced by the BAM or hourly wind speed > 25 mph or an out-of-range concentration.
4. Data marked with **bold green** text is valid. However, this data is highlighted since there was either a "warning" error code or hourly shelter temperature change exceeding the instrument tolerance.



DESERT SUNLIGHT SOLAR FARM

TABLE 3 - HOURLY BAM DATA

(Please refer to Table 3 cover page for additional details.)

All values are in units of milligrams per cubic meter.

Date	Hour	North Station		East Station		South Station		West Station	
		PM10	PM2.5	PM10	PM2.5	PM10	PM2.5	PM10	PM2.5
11/1/2012	0	0.008	0.004	0.011	0.000	0.985	0.985	0.004	0.003
11/1/2012	1	0.007	0.006	0.013	-0.001	0.985	0.985	0.004	0.003
11/1/2012	2	0.007	0.005	0.012	0.002	0.985	0.004	0.005	0.002
11/1/2012	3	0.008	0.004	0.011	0.002	0.985	0.985	0.006	0.000
11/1/2012	4	0.010	0.001	0.009	0.003	0.985	0.985	0.005	-0.001
11/1/2012	5	0.009	0.002	0.008	0.003	0.985	0.985	0.003	0.004
11/1/2012	6	0.007	0.002	---	---	0.985	0.985	0.004	0.003
11/1/2012	7	---	---	---	---	0.985	0.985	0.007	0.001
11/1/2012	8	---	---	---	---	0.985	0.003	0.007	0.003
11/1/2012	9	0.985	0.985	0.985	0.985	0.985	0.004	0.021	0.003
11/1/2012	10	-0.004	-0.005	-0.009	-0.014	0.100	0.003	-0.015	-0.015
11/1/2012	11	-0.002	-0.006	-0.005	-0.011	0.004	0.002	0.096	0.038
11/1/2012	12	0.037	-0.003	0.017	-0.005	0.019	0.002	0.019	0.006
11/1/2012	13	0.041	0.004	0.037	-0.001	0.042	0.985	0.034	0.006
11/1/2012	14	0.034	0.004	0.036	0.002	0.036	0.985	0.985	0.597
11/1/2012	15	0.380	0.004	0.031	0.004	0.032	0.004	0.029	0.004
11/1/2012	16	0.024	0.005	0.016	0.004	0.028	0.008	0.022	0.006
11/1/2012	17	0.014	0.006	0.013	0.000	0.015	0.985	0.006	0.005
11/1/2012	18	0.013	0.004	0.013	-0.002	0.013	0.985	0.007	0.000
11/1/2012	19	0.012	0.002	0.013	0.001	0.018	0.985	0.007	0.001
11/1/2012	20	0.012	0.005	0.008	0.002	0.004	0.985	0.005	0.003
11/1/2012	21	0.012	0.006	0.007	0.004	0.007	0.985	0.007	0.006
11/1/2012	22	0.017	0.007	0.012	0.004	0.017	0.985	0.016	0.008
11/1/2012	23	0.012	0.005	0.014	0.005	0.014	0.009	0.002	0.002
11/2/2012	0	0.009	0.002	0.025	0.005	0.009	0.985	0.001	-0.001
11/2/2012	1	0.006	0.004	0.010	0.004	0.005	0.985	0.004	0.003
11/2/2012	2	0.009	0.005	0.009	0.003	0.007	0.006	0.007	0.003
11/2/2012	3	0.017	0.006	0.030	0.005	0.011	0.985	0.009	0.006
11/2/2012	4	0.017	0.006	0.019	0.005	0.015	0.004	0.012	0.008
11/2/2012	5	0.012	0.007	0.015	0.005	0.014	0.985	0.014	0.006
11/2/2012	6	0.012	0.008	0.010	0.006	0.013	0.985	0.013	0.005
11/2/2012	7	0.013	0.006	0.016	0.006	0.017	0.985	0.014	0.004
11/2/2012	8	0.013	0.008	0.012	0.004	0.012	0.985	0.013	0.004
11/2/2012	9	0.013	0.007	0.013	0.004	0.025	0.007	0.010	0.006
11/2/2012	10	0.009	0.005	0.012	0.004	0.025	0.006	0.008	0.004
11/2/2012	11	0.010	0.005	0.007	0.001	0.031	0.002	0.009	0.000
11/2/2012	12	0.013	0.003	0.005	0.003	0.012	0.985	0.013	0.002
11/2/2012	13	0.012	0.001	0.010	0.004	0.009	0.985	0.022	0.004
11/2/2012	14	0.012	0.000	0.010	0.004	0.007	0.985	0.007	0.004
11/2/2012	15	0.011	0.003	0.009	0.003	0.011	0.985	0.009	0.005
11/2/2012	16	0.011	0.005	0.017	0.004	0.018	0.985	0.017	0.005
11/2/2012	17	0.012	0.003	0.006	0.002	0.007	0.985	0.007	0.003
11/2/2012	18	0.013	0.006	0.004	0.001	0.008	0.985	0.040	0.006
11/2/2012	19	0.014	0.007	0.007	0.005	0.010	0.985	0.010	0.007
11/2/2012	20	0.013	0.006	0.013	0.006	0.011	0.006	0.011	0.006
11/2/2012	21	0.010	0.008	0.011	0.004	0.011	0.985	0.010	0.008
11/2/2012	22	0.018	0.006	0.010	0.004	0.012	0.985	0.006	0.007
11/2/2012	23	0.011	0.005	0.012	0.005	0.012	0.007	0.005	0.005



DESERT SUNLIGHT SOLAR FARM

TABLE 3 - HOURLY BAM DATA

(Please refer to Table 3 cover page for additional details.)

All values are in units of milligrams per cubic meter.

Date	Hour	North Station		East Station		South Station		West Station	
		PM10	PM2.5	PM10	PM2.5	PM10	PM2.5	PM10	PM2.5
11/3/2012	0	0.011	0.003	0.014	0.008	0.013	0.005	0.008	0.005
11/3/2012	1	0.013	0.003	0.013	0.006	0.014	0.004	0.010	0.008
11/3/2012	2	0.014	0.006	0.012	0.003	0.011	0.003	0.011	0.005
11/3/2012	3	0.013	0.006	0.014	0.003	0.012	0.985	0.012	0.004
11/3/2012	4	0.018	0.005	0.013	0.003	0.014	0.004	0.012	0.006
11/3/2012	5	0.017	0.006	0.013	0.005	0.018	0.006	0.016	0.004
11/3/2012	6	0.019	0.006	0.014	0.005	0.013	0.007	0.012	0.006
11/3/2012	7	0.012	0.004	0.019	0.004	0.013	0.007	0.012	0.008
11/3/2012	8	0.013	0.004	0.013	0.004	0.014	0.005	0.017	0.006
11/3/2012	9	0.016	0.003	0.012	0.004	0.013	0.003	0.015	0.003
11/3/2012	10	0.013	0.003	0.013	0.004	0.015	0.003	0.016	0.000
11/3/2012	11	0.015	0.003	0.019	0.003	0.017	0.985	0.015	-0.001
11/3/2012	12	0.013	0.015	0.009	0.002	0.012	0.004	0.010	0.003
11/3/2012	13	0.011	0.006	0.015	0.000	0.010	0.985	0.012	0.004
11/3/2012	14	0.006	0.006	0.006	-0.002	0.007	0.985	0.012	0.004
11/3/2012	15	0.008	0.003	0.006	0.001	0.008	0.004	0.007	0.006
11/3/2012	16	0.009	0.001	0.017	0.005	0.008	0.004	0.005	0.003
11/3/2012	17	0.009	0.001	0.006	0.003	0.007	0.985	0.007	0.001
11/3/2012	18	0.012	0.003	0.009	0.004	0.009	0.985	0.022	0.002
11/3/2012	19	0.010	0.004	0.012	0.005	0.014	0.004	0.009	0.003
11/3/2012	20	0.009	0.004	0.011	0.005	0.013	0.004	0.009	0.005
11/3/2012	21	0.008	0.006	0.011	0.006	0.013	0.005	0.008	0.006
11/3/2012	22	0.009	0.007	0.010	0.005	0.010	0.006	0.008	0.004
11/3/2012	23	0.008	0.007	0.047	0.006	0.009	0.005	0.007	0.005
11/4/2012	0	0.007	0.006	0.008	0.005	0.009	0.004	0.008	0.006
11/4/2012	1	0.008	0.006	0.008	0.001	0.008	0.002	0.009	0.003
11/4/2012	2	0.010	0.006	0.007	0.000	0.008	0.002	0.006	0.003
11/4/2012	3	0.011	0.005	0.007	0.002	0.008	0.003	0.006	0.006
11/4/2012	4	0.009	0.004	0.011	0.002	0.012	0.004	0.008	0.005
11/4/2012	5	0.008	0.005	0.012	0.003	0.012	0.006	0.008	0.003
11/4/2012	6	0.009	0.004	0.009	0.003	0.008	0.006	0.009	0.005
11/4/2012	7	0.011	0.005	0.009	0.001	0.019	0.004	0.015	0.006
11/4/2012	8	0.011	0.002	0.012	0.001	0.014	0.003	0.009	0.004
11/4/2012	9	0.011	0.000	0.012	0.003	0.010	0.006	0.011	0.004
11/4/2012	10	0.019	0.000	0.025	0.002	0.019	0.005	0.012	0.002
11/4/2012	11	0.016	0.002	0.008	0.000	0.010	0.002	0.010	-0.001
11/4/2012	12	0.004	0.003	0.006	0.001	0.008	0.985	0.007	0.000
11/4/2012	13	0.005	0.003	0.007	0.001	0.006	0.985	0.006	0.000
11/4/2012	14	0.005	0.004	0.006	0.000	0.006	0.985	0.006	0.000
11/4/2012	15	0.006	0.000	0.016	0.000	0.010	0.985	0.005	0.001
11/4/2012	16	0.006	0.000	0.005	0.002	0.011	0.985	0.005	0.005
11/4/2012	17	0.005	0.002	0.008	0.001	0.008	0.985	0.006	0.005
11/4/2012	18	0.006	0.002	0.010	0.000	0.009	0.985	0.006	0.001
11/4/2012	19	0.008	0.003	0.010	0.002	0.010	0.985	0.008	0.001
11/4/2012	20	0.010	0.003	0.010	0.005	0.009	0.985	0.007	0.004
11/4/2012	21	0.009	0.003	0.016	0.004	0.008	0.985	0.008	0.004
11/4/2012	22	0.009	0.003	0.010	0.004	0.006	0.985	0.008	0.002
11/4/2012	23	0.009	0.003	0.009	0.003	0.006	0.003	0.007	0.002



DESERT SUNLIGHT SOLAR FARM

TABLE 3 - HOURLY BAM DATA

(Please refer to Table 3 cover page for additional details.)

All values are in units of milligrams per cubic meter.

Date	Hour	North Station		East Station		South Station		West Station	
		PM10	PM2.5	PM10	PM2.5	PM10	PM2.5	PM10	PM2.5
11/5/2012	0	0.008	0.005	0.009	0.001	0.018	0.985	0.008	0.004
11/5/2012	1	0.009	0.005	0.010	0.001	0.008	0.985	0.007	0.007
11/5/2012	2	0.009	0.005	0.010	0.001	0.010	0.985	0.007	0.008
11/5/2012	3	0.011	0.005	0.007	0.001	0.012	0.985	0.009	0.004
11/5/2012	4	0.010	0.003	0.005	0.002	0.009	0.985	0.008	0.002
11/5/2012	5	0.006	0.001	0.006	0.001	0.009	0.985	0.006	0.003
11/5/2012	6	0.006	0.004	0.009	0.002	0.009	0.985	0.007	0.003
11/5/2012	7	0.009	0.003	0.006	0.004	0.007	0.985	0.009	0.003
11/5/2012	8	0.007	0.001	0.006	0.004	0.076	0.985	0.008	0.003
11/5/2012	9	0.006	0.003	0.008	0.003	0.029	0.985	0.008	0.003
11/5/2012	10	0.007	0.003	0.007	0.000	0.018	0.985	0.013	0.005
11/5/2012	11	0.007	0.003	0.008	0.000	0.021	0.985	0.009	0.002
11/5/2012	12	0.004	0.003	0.006	-0.001	0.015	0.985	0.022	-0.001
11/5/2012	13	0.004	0.003	0.002	-0.004	0.015	0.985	0.003	-0.001
11/5/2012	14	0.005	0.002	0.005	-0.004	0.012	0.985	0.021	0.004
11/5/2012	15	0.003	0.002	0.005	-0.002	0.008	0.985	0.007	0.005
11/5/2012	16	0.006	0.002	0.004	0.000	0.010	0.985	0.009	0.003
11/5/2012	17	0.007	0.002	0.002	0.001	0.014	0.985	0.006	0.004
11/5/2012	18	0.006	0.004	0.002	0.000	0.052	0.985	0.004	0.005
11/5/2012	19	0.006	0.005	0.016	0.002	0.014	0.985	0.005	0.004
11/5/2012	20	0.007	0.003	0.006	0.006	0.008	0.985	0.005	0.004
11/5/2012	21	0.009	0.003	0.009	0.007	0.004	0.985	0.006	0.001
11/5/2012	22	0.008	0.005	0.010	0.004	0.007	0.985	0.005	0.002
11/5/2012	23	0.006	0.003	0.006	0.002	0.008	0.985	0.005	0.006
11/6/2012	0	0.006	0.002	0.003	0.002	0.005	0.985	0.006	0.004
11/6/2012	1	0.015	0.004	0.022	0.001	0.005	0.985	0.008	0.001
11/6/2012	2	0.009	0.002	0.009	0.001	0.007	0.985	0.008	0.001
11/6/2012	3	0.011	0.001	0.008	0.001	0.007	0.985	0.008	0.000
11/6/2012	4	0.011	0.003	0.007	0.002	0.004	0.985	0.006	0.001
11/6/2012	5	0.009	0.006	0.006	0.002	0.006	0.985	0.006	0.003
11/6/2012	6	0.004	0.005	0.003	0.001	0.007	0.985	0.007	0.001
11/6/2012	7	0.004	0.001	0.003	-0.001	0.008	0.985	0.006	0.001
11/6/2012	8	0.008	0.001	0.005	0.000	0.061	0.006	0.007	0.002
11/6/2012	9	0.006	0.001	0.003	0.001	0.033	0.985	0.007	0.001
11/6/2012	10	0.004	0.002	0.005	-0.002	0.030	0.985	0.005	0.000
11/6/2012	11	0.006	0.003	0.003	-0.002	0.027	0.985	0.004	0.001
11/6/2012	12	0.016	0.003	0.001	0.001	0.016	0.985	0.002	0.003
11/6/2012	13	0.002	0.001	0.001	0.001	0.009	0.985	0.003	0.002
11/6/2012	14	0.003	0.002	-0.002	0.000	0.007	0.985	0.003	-0.001
11/6/2012	15	0.003	0.001	-0.002	-0.003	0.005	0.985	0.000	0.000
11/6/2012	16	0.004	0.001	0.000	-0.003	0.004	0.985	0.001	0.001
11/6/2012	17	0.005	0.002	0.003	-0.001	0.005	0.985	0.004	0.002
11/6/2012	18	0.007	0.004	0.006	-0.002	0.004	0.985	0.009	0.003
11/6/2012	19	0.009	0.005	0.005	0.000	0.006	0.985	0.010	0.003
11/6/2012	20	0.007	0.002	0.007	0.002	0.011	0.005	0.005	0.003
11/6/2012	21	0.005	0.004	0.008	0.001	0.008	0.003	0.004	0.002
11/6/2012	22	0.007	0.006	0.010	0.003	0.005	0.004	0.005	0.004
11/6/2012	23	0.008	0.005	0.054	0.006	0.005	0.003	0.005	0.005



DESERT SUNLIGHT SOLAR FARM

TABLE 3 - HOURLY BAM DATA

(Please refer to Table 3 cover page for additional details.)

All values are in units of milligrams per cubic meter.

Date	Hour	North Station		East Station		South Station		West Station	
		PM10	PM2.5	PM10	PM2.5	PM10	PM2.5	PM10	PM2.5
11/7/2012	0	0.008	0.003	0.005	0.004	0.006	0.985	0.004	0.004
11/7/2012	1	0.011	0.002	0.006	0.001	0.003	0.985	0.002	0.003
11/7/2012	2	0.011	0.001	0.005	0.002	0.004	0.985	0.004	0.002
11/7/2012	3	0.006	0.000	0.007	0.001	0.007	0.985	0.006	0.001
11/7/2012	4	0.006	0.003	0.010	0.002	0.007	0.985	0.006	0.002
11/7/2012	5	0.009	0.004	0.010	0.004	0.007	0.985	0.006	0.002
11/7/2012	6	0.009	0.002	0.009	0.003	0.006	0.985	0.005	0.001
11/7/2012	7	0.011	0.002	0.006	0.004	0.006	0.985	0.006	0.002
11/7/2012	8	0.010	0.003	0.006	0.002	0.044	0.985	0.006	0.003
11/7/2012	9	0.010	0.002	0.007	-0.001	0.022	0.985	0.008	0.000
11/7/2012	10	0.009	0.001	0.008	-0.002	0.024	0.985	0.008	-0.001
11/7/2012	11	0.006	0.002	0.009	-0.002	0.008	0.985	0.003	0.001
11/7/2012	12	0.010	0.002	0.023	0.000	0.007	0.985	0.005	0.000
11/7/2012	13	0.011	0.001	0.009	-0.001	0.009	0.985	0.009	-0.001
11/7/2012	14	0.007	0.000	0.007	-0.003	0.009	0.985	0.008	-0.001
11/7/2012	15	0.003	0.000	0.005	-0.002	0.017	0.985	0.007	0.004
11/7/2012	16	0.004	0.004	0.005	-0.001	0.007	0.985	0.007	0.003
11/7/2012	17	0.009	0.002	0.001	0.000	0.011	0.985	0.006	0.001
11/7/2012	18	0.009	0.000	0.004	0.002	0.013	0.985	0.008	0.004
11/7/2012	19	0.010	0.003	0.010	0.005	0.010	0.985	0.011	0.003
11/7/2012	20	0.012	0.004	0.010	0.003	0.011	0.985	0.010	0.002
11/7/2012	21	0.010	0.004	0.012	0.002	0.011	0.985	0.011	0.003
11/7/2012	22	0.010	0.004	0.011	0.002	0.012	0.985	0.010	0.006
11/7/2012	23	0.011	0.005	0.010	0.000	0.013	0.985	0.008	0.004
11/8/2012	0	0.015	0.006	0.012	0.001	0.011	0.985	0.009	0.003
11/8/2012	1	0.012	0.006	0.013	0.004	0.009	0.985	0.012	0.004
11/8/2012	2	0.013	0.006	0.024	0.004	0.016	0.985	0.013	0.005
11/8/2012	3	0.012	0.006	0.023	0.004	0.010	0.985	0.015	0.005
11/8/2012	4	0.017	0.005	0.011	0.004	0.009	0.985	0.011	0.008
11/8/2012	5	0.014	0.004	0.011	0.004	0.010	0.985	0.008	0.008
11/8/2012	6	0.013	0.002	0.012	0.002	0.011	0.985	0.008	0.006
11/8/2012	7	0.010	0.002	0.012	0.002	0.011	0.985	0.010	0.004
11/8/2012	8	0.016	0.005	0.010	0.003	0.017	0.985	0.011	0.006
11/8/2012	9	0.011	0.007	0.008	0.003	0.041	0.985	0.012	0.006
11/8/2012	10	0.011	0.005	0.009	0.001	0.038	0.985	0.011	0.003
11/8/2012	11	0.013	0.004	0.073	0.002	0.985	0.000	0.022	0.003
11/8/2012	12	0.012	0.003	0.017	0.003	0.014	0.001	0.017	0.005
11/8/2012	13	0.010	0.002	0.018	0.001	0.020	0.004	0.017	0.003
11/8/2012	14	0.033	0.007	0.038	0.000	0.019	0.004	0.022	0.003
11/8/2012	15	0.022	0.007	0.023	0.001	0.033	0.003	0.021	0.003
11/8/2012	16	0.035	0.005	0.034	0.002	0.036	0.004	0.025	0.003
11/8/2012	17	0.042	0.004	0.066	0.006	0.059	0.005	0.021	0.005
11/8/2012	18	0.023	0.004	0.020	0.005	0.024	0.006	0.020	0.006
11/8/2012	19	0.034	0.005	0.035	0.005	0.041	0.007	0.036	0.008
11/8/2012	20	0.118	0.023	0.149	0.019	0.153	0.019	0.136	0.020
11/8/2012	21	0.054	0.010	0.080	0.008	0.070	0.011	0.038	0.006
11/8/2012	22	0.043	0.009	0.036	0.009	0.049	0.008	0.052	0.006
11/8/2012	23	0.032	0.009	0.022	0.008	0.022	0.006	0.025	0.006



DESERT SUNLIGHT SOLAR FARM

TABLE 3 - HOURLY BAM DATA

(Please refer to Table 3 cover page for additional details.)

All values are in units of milligrams per cubic meter.

Date	Hour	North Station		East Station		South Station		West Station	
		PM10	PM2.5	PM10	PM2.5	PM10	PM2.5	PM10	PM2.5
11/9/2012	0	0.022	0.010	0.018	0.005	0.022	0.004	0.027	0.007
11/9/2012	1	0.022	0.006	0.066	0.004	0.133	0.003	0.015	0.005
11/9/2012	2	0.020	0.006	0.100	0.006	0.023	0.004	0.017	0.004
11/9/2012	3	0.018	0.005	0.040	0.004	0.017	0.004	0.010	0.005
11/9/2012	4	0.026	0.001	0.023	0.002	0.009	0.004	0.009	0.003
11/9/2012	5	0.017	0.002	0.029	0.004	0.033	0.004	0.020	0.004
11/9/2012	6	0.038	0.004	0.057	0.005	0.052	0.004	0.029	0.004
11/9/2012	7	0.024	0.004	0.015	0.003	0.012	0.003	0.021	0.003
11/9/2012	8	0.104	0.005	0.035	0.001	0.081	0.006	0.113	0.005
11/9/2012	9	0.065	0.006	0.085	0.002	0.079	0.007	0.081	0.006
11/9/2012	10	0.046	0.006	0.076	0.054	0.040	0.004	0.034	0.004
11/9/2012	11	0.904	0.006	0.053	0.008	0.035	0.002	0.026	0.005
11/9/2012	12	0.063	0.004	0.078	0.026	0.053	0.004	0.044	0.004
11/9/2012	13	0.059	0.006	0.104	0.006	0.082	0.004	0.057	0.005
11/9/2012	14	0.044	0.008	0.100	0.006	0.075	0.005	0.051	0.005
11/9/2012	15	0.058	0.005	0.088	0.005	0.057	0.005	0.049	0.006
11/9/2012	16	0.048	0.004	0.234	0.019	0.090	0.006	0.031	0.006
11/9/2012	17	0.026	0.003	0.034	0.025	0.028	0.006	0.023	0.006
11/9/2012	18	0.028	0.006	0.040	0.035	0.038	0.004	0.023	0.007
11/9/2012	19	0.015	0.007	0.017	0.023	0.017	0.002	0.021	0.006
11/9/2012	20	0.008	0.004	0.009	0.005	0.014	0.002	0.008	0.007
11/9/2012	21	0.008	0.004	0.008	0.003	0.010	0.001	0.007	0.006
11/9/2012	22	0.024	0.005	0.015	0.000	0.010	0.002	0.009	0.005
11/9/2012	23	0.024	0.006	0.025	0.002	0.024	0.004	0.029	0.004
11/10/2012	0	0.015	0.009	0.016	0.004	0.021	0.004	0.013	0.005
11/10/2012	1	0.010	0.005	0.023	0.004	0.017	0.003	0.011	0.004
11/10/2012	2	0.011	0.003	0.012	0.005	0.012	0.002	0.011	0.002
11/10/2012	3	0.010	0.006	0.011	0.004	0.012	0.004	0.010	0.006
11/10/2012	4	0.008	0.006	0.010	0.002	0.010	0.004	0.010	0.005
11/10/2012	5	0.018	0.006	0.012	0.000	0.006	0.005	0.009	0.004
11/10/2012	6	0.010	0.006	0.010	0.000	0.006	0.004	0.008	0.003
11/10/2012	7	0.010	0.005	0.009	0.001	0.007	0.004	0.009	0.002
11/10/2012	8	0.011	0.004	0.010	0.002	0.007	0.004	0.008	0.003
11/10/2012	9	0.013	0.005	0.007	-0.001	0.007	0.003	0.006	0.000
11/10/2012	10	0.010	0.009	0.005	0.000	0.009	0.003	0.005	0.000
11/10/2012	11	0.005	0.008	0.005	0.001	0.021	0.003	0.005	0.003
11/10/2012	12	0.006	0.004	0.026	0.002	0.003	0.001	0.005	0.003
11/10/2012	13	0.009	0.002	0.006	0.002	0.006	0.001	0.008	0.003
11/10/2012	14	0.009	0.001	0.008	-0.002	0.007	0.002	0.008	0.002
11/10/2012	15	0.009	0.005	0.010	0.000	0.030	0.000	0.006	0.003
11/10/2012	16	0.020	0.005	0.016	0.003	0.017	0.001	0.015	0.003
11/10/2012	17	0.047	0.005	0.047	0.003	0.054	0.004	0.045	0.004
11/10/2012	18	0.044	0.006	0.048	0.005	0.153	0.007	0.044	0.008
11/10/2012	19	0.066	0.006	0.060	0.006	0.177	0.010	0.048	0.008
11/10/2012	20	0.056	0.006	0.051	0.005	0.057	0.008	0.044	0.007
11/10/2012	21	0.029	0.005	0.031	0.004	0.089	0.008	0.021	0.007
11/10/2012	22	0.023	0.005	0.019	0.004	0.342	0.020	0.014	0.007
11/10/2012	23	0.013	0.005	0.017	0.003	0.014	0.000	0.011	0.006



DESERT SUNLIGHT SOLAR FARM

TABLE 3 - HOURLY BAM DATA

(Please refer to Table 3 cover page for additional details.)

All values are in units of milligrams per cubic meter.

Date	Hour	North Station		East Station		South Station		West Station	
		PM10	PM2.5	PM10	PM2.5	PM10	PM2.5	PM10	PM2.5
11/11/2012	0	0.017	0.006	0.013	0.002	0.010	0.000	0.010	0.005
11/11/2012	1	0.007	0.005	0.011	0.003	0.008	0.000	0.010	0.004
11/11/2012	2	0.010	0.005	0.010	0.004	0.008	0.002	0.008	0.004
11/11/2012	3	0.008	0.005	0.012	0.004	0.009	0.003	0.007	0.005
11/11/2012	4	0.007	0.004	0.009	0.003	0.010	0.002	0.008	0.003
11/11/2012	5	0.009	0.004	0.006	0.002	0.009	0.003	0.007	0.004
11/11/2012	6	0.008	0.006	0.005	0.002	0.005	0.002	0.008	0.004
11/11/2012	7	0.009	0.007	0.007	0.004	0.005	0.001	0.008	0.004
11/11/2012	8	0.009	0.007	0.010	0.005	0.008	0.003	0.004	0.006
11/11/2012	9	0.011	0.005	0.006	0.004	0.009	0.005	0.005	0.005
11/11/2012	10	0.010	0.001	0.006	0.004	0.008	0.004	0.005	0.001
11/11/2012	11	0.008	0.002	0.007	0.005	0.007	0.001	0.006	0.001
11/11/2012	12	0.008	0.005	0.006	0.002	0.005	0.001	0.003	0.002
11/11/2012	13	0.006	0.003	0.007	-0.002	0.004	0.003	0.003	0.001
11/11/2012	14	0.006	0.003	0.007	0.000	0.003	0.002	0.009	0.001
11/11/2012	15	0.007	0.003	0.008	0.001	0.005	0.000	0.010	0.000
11/11/2012	16	0.007	0.004	0.008	0.003	0.011	0.000	0.007	0.000
11/11/2012	17	0.004	0.005	0.006	0.002	0.011	0.001	0.005	0.001
11/11/2012	18	0.007	0.005	0.007	0.002	0.011	0.004	0.006	0.002
11/11/2012	19	0.010	0.005	0.057	0.007	0.010	0.005	0.009	0.003
11/11/2012	20	0.012	0.004	0.013	0.005	0.011	0.005	0.011	0.004
11/11/2012	21	0.012	0.005	0.025	0.002	0.012	0.001	0.009	0.003
11/11/2012	22	0.011	0.005	0.011	0.007	0.010	0.001	0.005	0.002
11/11/2012	23	0.013	0.006	0.011	0.007	0.008	0.003	0.006	0.003
11/12/2012	0	0.012	0.007	0.010	0.005	0.007	0.002	0.007	0.004
11/12/2012	1	0.010	0.006	0.009	0.006	0.006	0.002	0.008	0.005
11/12/2012	2	0.011	0.003	0.035	0.006	0.007	-0.001	0.006	0.004
11/12/2012	3	0.011	0.003	0.010	0.004	0.010	0.001	0.006	0.005
11/12/2012	4	0.009	0.006	0.040	0.005	0.010	0.006	0.006	0.007
11/12/2012	5	0.009	0.006	0.011	0.005	0.010	0.004	0.008	0.005
11/12/2012	6	0.010	0.006	0.010	0.004	0.008	0.005	0.010	0.003
11/12/2012	7	0.008	0.005	0.008	0.005	0.007	0.004	0.009	0.006
11/12/2012	8	0.006	0.006	0.015	0.005	0.016	0.002	0.007	0.009
11/12/2012	9	0.007	0.006	0.010	0.005	0.050	0.004	0.006	0.006
11/12/2012	10	0.008	0.005	0.011	0.004	0.041	0.003	0.009	0.002
11/12/2012	11	0.007	0.004	0.008	0.002	0.029	0.001	0.010	0.002
11/12/2012	12	0.008	0.001	0.005	0.002	0.050	0.003	0.009	0.002
11/12/2012	13	0.009	0.001	0.004	-0.001	0.022	0.004	0.008	0.004
11/12/2012	14	0.030	0.003	0.002	-0.001	0.012	0.001	0.004	0.002
11/12/2012	15	0.024	0.004	0.003	0.000	0.030	0.001	0.005	0.001
11/12/2012	16	0.019	0.003	0.006	0.001	0.088	0.004	0.007	0.005
11/12/2012	17	0.008	0.002	0.005	0.003	0.017	0.004	0.007	0.006
11/12/2012	18	0.009	0.003	0.006	0.001	0.029	0.002	0.006	0.004
11/12/2012	19	0.011	0.008	0.011	0.003	0.011	0.003	0.021	0.004
11/12/2012	20	0.009	0.006	0.011	0.007	0.011	0.007	0.010	0.005
11/12/2012	21	0.008	0.003	0.022	0.005	0.010	0.005	0.008	0.005
11/12/2012	22	0.009	0.004	0.010	0.005	0.006	0.001	0.006	0.003
11/12/2012	23	0.009	0.004	0.008	0.007	0.006	0.001	0.007	0.002



DESERT SUNLIGHT SOLAR FARM

TABLE 3 - HOURLY BAM DATA

(Please refer to Table 3 cover page for additional details.)

All values are in units of milligrams per cubic meter.

Date	Hour	North Station		East Station		South Station		West Station	
		PM10	PM2.5	PM10	PM2.5	PM10	PM2.5	PM10	PM2.5
11/13/2012	0	0.008	0.005	0.008	0.005	0.008	0.003	0.008	0.004
11/13/2012	1	0.009	0.004	0.023	0.003	0.008	0.005	0.025	0.005
11/13/2012	2	0.010	0.004	0.006	0.003	0.007	0.007	0.008	0.004
11/13/2012	3	0.007	0.003	0.029	0.006	0.008	0.006	0.007	0.005
11/13/2012	4	0.007	0.004	0.009	0.006	0.008	0.002	0.006	0.005
11/13/2012	5	0.007	0.006	0.007	0.003	0.009	0.002	0.008	0.006
11/13/2012	6	0.007	0.006	0.007	0.002	0.009	0.000	0.009	0.008
11/13/2012	7	0.007	0.010	0.008	0.003	0.007	0.001	0.008	0.004
11/13/2012	8	0.009	0.010	0.008	0.004	0.019	0.002	0.009	0.003
11/13/2012	9	0.012	0.005	0.006	0.005	0.040	0.003	0.008	0.004
11/13/2012	10	0.020	0.005	0.007	0.005	0.070	0.006	0.007	0.004
11/13/2012	11	0.021	0.006	0.011	0.003	0.089	0.004	0.007	0.001
11/13/2012	12	0.013	0.002	0.009	0.001	0.047	0.000	0.006	0.000
11/13/2012	13	0.012	0.000	0.003	-0.001	0.017	0.000	0.004	-0.001
11/13/2012	14	0.006	0.001	0.002	-0.001	0.008	0.001	0.005	-0.001
11/13/2012	15	0.003	0.003	0.002	-0.001	0.007	0.000	0.005	0.001
11/13/2012	16	0.005	0.002	0.002	0.006	0.007	0.000	0.002	0.002
11/13/2012	17	0.004	0.001	0.005	0.013	0.033	0.002	0.000	0.003
11/13/2012	18	0.003	0.002	0.006	0.013	0.008	0.004	0.000	0.005
11/13/2012	19	0.005	0.005	0.008	0.009	0.015	0.004	0.005	0.006
11/13/2012	20	0.009	0.006	0.011	0.007	0.010	0.005	0.004	0.003
11/13/2012	21	0.008	0.006	0.010	0.008	0.008	0.006	0.006	0.003
11/13/2012	22	0.005	0.004	0.011	0.007	0.006	0.006	0.008	0.004
11/13/2012	23	0.005	0.002	0.007	0.004	0.005	0.002	0.007	0.001
11/14/2012	0	0.005	0.004	0.005	0.005	0.004	-0.001	0.006	0.002
11/14/2012	1	0.006	0.005	0.021	0.006	0.004	-0.001	0.004	0.004
11/14/2012	2	0.006	0.005	0.005	0.004	0.005	0.001	0.006	0.003
11/14/2012	3	0.010	0.004	0.031	0.009	0.005	0.004	0.008	0.004
11/14/2012	4	0.013	0.006	---	---	0.006	0.004	0.008	0.003
11/14/2012	5	0.011	0.008	---	---	0.006	0.002	0.008	0.001
11/14/2012	6	0.009	0.007	---	---	0.004	0.001	0.007	0.002
11/14/2012	7	0.008	0.005	---	---	0.004	0.002	0.005	0.002
11/14/2012	8	0.008	0.006	---	---	0.007	0.003	0.003	0.001
11/14/2012	9	0.007	0.005	0.985	0.985	0.015	0.003	0.007	0.001
11/14/2012	10	0.008	0.004	-0.011	-0.001	0.033	0.001	0.007	0.001
11/14/2012	11	0.006	0.003	-0.007	-0.002	0.020	0.000	0.004	-0.001
11/14/2012	12	0.003	0.002	-0.005	-0.003	0.017	-0.001	0.002	0.001
11/14/2012	13	0.005	0.003	-0.007	-0.004	0.011	0.000	0.002	0.003
11/14/2012	14	0.005	0.001	-0.002	0.002	0.006	0.000	0.003	0.000
11/14/2012	15	0.003	0.002	0.003	0.009	0.002	0.000	0.004	0.000
11/14/2012	16	0.003	0.003	0.005	0.010	0.036	0.003	0.002	0.004
11/14/2012	17	0.006	0.002	0.006	0.006	0.006	0.003	0.006	0.002
11/14/2012	18	0.010	0.001	0.018	0.002	0.006	0.001	0.006	0.002
11/14/2012	19	0.008	0.004	0.011	0.004	0.018	0.001	0.004	0.002
11/14/2012	20	0.007	0.007	0.011	0.007	0.008	0.004	0.005	0.000
11/14/2012	21	0.007	0.005	0.026	0.006	0.006	0.005	0.004	0.001
11/14/2012	22	0.004	0.002	0.004	0.002	0.003	0.003	0.004	0.000
11/14/2012	23	0.005	0.001	0.028	0.000	0.004	0.000	0.002	-0.001



DESERT SUNLIGHT SOLAR FARM

TABLE 3 - HOURLY BAM DATA

(Please refer to Table 3 cover page for additional details.)

All values are in units of milligrams per cubic meter.

Date	Hour	North Station		East Station		South Station		West Station	
		PM10	PM2.5	PM10	PM2.5	PM10	PM2.5	PM10	PM2.5
11/15/2012	0	0.008	0.004	0.001	0.003	0.006	0.000	0.001	0.002
11/15/2012	1	0.008	0.007	0.002	0.007	0.003	-0.001	0.003	0.002
11/15/2012	2	0.006	0.006	0.005	0.006	0.003	-0.001	0.003	0.001
11/15/2012	3	0.007	0.002	0.008	0.004	0.001	0.003	0.004	0.000
11/15/2012	4	0.006	0.002	0.012	0.005	-0.001	0.004	0.005	0.001
11/15/2012	5	0.006	0.005	0.011	0.003	0.002	0.001	0.005	0.004
11/15/2012	6	0.009	0.007	0.007	0.002	0.006	0.002	0.006	0.003
11/15/2012	7	0.009	0.006	0.011	0.004	0.010	0.000	0.005	0.002
11/15/2012	8	0.023	0.005	0.011	0.003	0.032	-0.001	0.004	0.004
11/15/2012	9	0.010	0.005	0.009	0.003	0.031	0.000	0.005	0.006
11/15/2012	10	0.021	0.003	0.025	0.002	0.013	0.001	0.007	0.004
11/15/2012	11	0.008	0.001	0.005	0.002	0.019	0.002	0.011	0.003
11/15/2012	12	0.009	0.003	0.022	0.002	0.024	0.001	0.010	0.001
11/15/2012	13	0.010	0.006	0.007	0.000	0.007	0.000	0.008	-0.001
11/15/2012	14	0.009	0.004	0.017	0.000	0.008	-0.001	0.011	0.001
11/15/2012	15	0.008	0.004	0.005	0.002	0.008	0.000	0.010	0.005
11/15/2012	16	0.007	0.003	0.026	0.002	0.006	0.000	0.010	0.004
11/15/2012	17	0.009	0.003	0.044	0.007	0.006	0.000	0.012	0.004
11/15/2012	18	0.016	0.005	0.020	0.007	0.025	0.001	0.010	0.006
11/15/2012	19	0.010	0.005	0.016	0.004	0.008	0.003	0.007	0.004
11/15/2012	20	0.011	0.005	0.027	0.007	0.006	0.003	0.002	0.002
11/15/2012	21	0.012	0.006	0.009	0.006	0.008	0.002	0.003	0.002
11/15/2012	22	0.009	0.005	0.009	0.003	0.006	0.001	0.004	0.004
11/15/2012	23	0.007	0.003	0.010	0.001	0.004	0.003	0.004	0.004
11/16/2012	0	0.007	0.002	0.010	-0.002	0.008	0.002	0.005	0.003
11/16/2012	1	0.006	0.004	0.011	-0.002	0.005	0.001	0.005	0.004
11/16/2012	2	0.008	0.004	0.009	0.001	0.001	0.004	0.005	0.004
11/16/2012	3	0.007	0.005	0.008	0.001	0.003	0.004	0.005	0.003
11/16/2012	4	0.006	0.007	0.007	0.001	0.004	0.002	0.005	0.002
11/16/2012	5	0.007	0.006	0.006	0.003	0.006	0.001	0.006	0.001
11/16/2012	6	0.006	0.005	0.009	0.001	0.006	0.000	0.005	0.000
11/16/2012	7	0.006	0.006	0.009	0.001	0.029	0.002	0.005	0.001
11/16/2012	8	0.006	0.005	0.006	0.000	0.005	0.003	0.004	0.004
11/16/2012	9	0.007	0.003	0.003	-0.002	0.006	0.001	0.001	0.001
11/16/2012	10	0.006	0.002	0.003	-0.001	0.006	-0.001	0.002	0.985
11/16/2012	11	0.006	0.001	0.004	-0.001	0.025	-0.001	0.985	0.002
11/16/2012	12	0.006	0.002	0.004	0.000	0.006	0.002	0.006	0.002
11/16/2012	13	0.007	0.003	0.005	0.002	0.005	0.002	0.008	0.001
11/16/2012	14	0.010	0.004	0.007	0.001	0.007	0.001	0.004	0.001
11/16/2012	15	0.008	0.005	0.007	0.001	0.009	0.001	0.002	0.000
11/16/2012	16	0.007	0.002	0.007	0.003	0.010	0.004	0.006	0.001
11/16/2012	17	0.009	0.001	0.008	0.002	0.011	0.004	0.009	0.003
11/16/2012	18	0.012	0.002	0.007	0.004	0.007	0.004	0.008	0.004
11/16/2012	19	0.011	0.005	0.018	0.005	0.006	0.004	0.007	0.005
11/16/2012	20	0.010	0.010	0.020	0.005	0.019	0.006	0.006	0.006
11/16/2012	21	0.008	0.007	0.011	0.005	0.009	0.007	0.003	0.004
11/16/2012	22	0.009	0.004	0.008	0.003	0.009	0.005	0.005	0.003
11/16/2012	23	0.033	0.007	0.019	0.002	0.018	0.004	0.035	0.004



DESERT SUNLIGHT SOLAR FARM

TABLE 3 - HOURLY BAM DATA

(Please refer to Table 3 cover page for additional details.)

All values are in units of milligrams per cubic meter.

Date	Hour	North Station		East Station		South Station		West Station	
		PM10	PM2.5	PM10	PM2.5	PM10	PM2.5	PM10	PM2.5
11/17/2012	0	0.050	0.009	0.039	0.004	0.035	0.003	0.045	0.007
11/17/2012	1	0.053	0.010	0.048	0.006	0.038	0.004	0.051	0.012
11/17/2012	2	0.051	0.010	0.047	0.007	0.048	0.007	0.051	0.011
11/17/2012	3	0.041	0.011	0.049	0.010	0.039	0.009	0.040	0.009
11/17/2012	4	0.044	0.012	0.041	0.008	0.040	0.010	0.037	0.008
11/17/2012	5	0.035	0.010	0.034	0.005	0.032	0.008	0.035	0.007
11/17/2012	6	0.031	0.008	0.024	0.004	0.021	0.007	0.027	0.007
11/17/2012	7	0.030	0.007	0.015	0.006	0.028	0.007	0.027	0.008
11/17/2012	8	0.025	0.009	0.014	0.009	0.017	0.005	0.031	0.007
11/17/2012	9	0.014	0.008	0.009	0.022	0.010	0.002	0.006	0.004
11/17/2012	10	0.010	0.006	0.006	0.003	0.010	0.000	0.007	0.002
11/17/2012	11	0.008	0.005	0.003	0.003	0.006	-0.002	0.008	0.002
11/17/2012	12	0.011	0.002	0.052	0.006	0.031	-0.003	0.006	0.001
11/17/2012	13	0.007	0.003	0.005	0.007	0.005	0.000	0.003	0.000
11/17/2012	14	0.006	0.002	0.044	0.005	0.010	0.000	0.005	0.000
11/17/2012	15	0.008	0.003	0.014	0.003	0.011	0.001	0.006	0.003
11/17/2012	16	0.007	0.006	0.011	-0.001	0.008	0.001	0.003	0.004
11/17/2012	17	0.006	0.006	0.009	0.000	0.007	0.001	0.006	0.003
11/17/2012	18	0.006	0.004	0.008	0.003	0.005	0.002	0.011	0.002
11/17/2012	19	0.005	0.005	0.006	0.002	0.007	0.002	0.009	0.002
11/17/2012	20	0.007	0.006	0.010	0.000	0.007	0.002	0.005	0.002
11/17/2012	21	0.011	0.005	0.011	0.002	0.006	0.002	0.006	0.002
11/17/2012	22	0.008	0.008	0.005	0.002	0.005	0.003	0.005	0.003
11/17/2012	23	0.007	0.005	0.006	-0.001	0.004	0.004	0.002	0.004
11/18/2012	0	0.010	0.003	0.010	0.000	0.007	0.002	0.002	0.004
11/18/2012	1	0.007	0.005	0.007	0.002	0.007	0.003	0.006	0.005
11/18/2012	2	0.006	0.005	0.005	-0.001	0.006	0.005	0.005	0.005
11/18/2012	3	0.007	0.005	0.007	0.000	0.006	0.002	0.002	0.005
11/18/2012	4	0.008	0.003	0.006	0.002	0.002	0.002	-0.003	0.002
11/18/2012	5	0.004	0.002	0.006	0.003	0.000	0.005	-0.002	0.000
11/18/2012	6	0.002	0.002	0.003	0.002	-0.001	0.003	0.002	0.002
11/18/2012	7	0.003	0.005	0.000	0.001	0.003	0.002	0.001	0.002
11/18/2012	8	0.003	0.006	0.001	0.001	0.003	0.003	0.002	0.003
11/18/2012	9	0.004	0.004	0.002	0.001	-0.003	0.003	0.005	0.985
11/18/2012	10	0.006	0.003	0.001	0.000	-0.001	0.002	0.006	0.985
11/18/2012	11	0.005	0.003	0.000	-0.002	0.000	0.003	0.004	0.985
11/18/2012	12	0.002	0.001	-0.002	-0.001	0.001	0.003	0.002	0.985
11/18/2012	13	0.002	-0.001	-0.001	0.001	0.002	0.003	0.000	0.985
11/18/2012	14	0.002	0.001	0.001	0.008	0.007	0.002	0.000	0.985
11/18/2012	15	0.004	0.000	0.002	0.010	0.007	0.001	0.001	0.985
11/18/2012	16	0.005	0.000	0.002	0.005	0.002	0.002	0.001	0.985
11/18/2012	17	0.002	0.002	0.001	0.003	0.003	0.004	0.001	0.985
11/18/2012	18	0.005	0.003	0.005	0.004	0.004	0.003	0.007	0.985
11/18/2012	19	0.007	0.002	0.006	0.005	0.006	0.003	0.007	0.985
11/18/2012	20	0.006	0.003	0.003	0.004	0.004	0.004	0.005	0.985
11/18/2012	21	0.007	0.003	0.004	0.004	0.004	0.002	0.008	0.985
11/18/2012	22	0.007	0.001	0.004	0.004	0.004	0.002	0.005	0.985
11/18/2012	23	0.006	0.004	0.005	0.004	0.003	0.003	0.001	0.985



DESERT SUNLIGHT SOLAR FARM

TABLE 3 - HOURLY BAM DATA

(Please refer to Table 3 cover page for additional details.)

All values are in units of milligrams per cubic meter.

Date	Hour	North Station		East Station		South Station		West Station	
		PM10	PM2.5	PM10	PM2.5	PM10	PM2.5	PM10	PM2.5
11/19/2012	0	0.005	0.002	0.003	0.001	0.005	0.002	0.002	0.985
11/19/2012	1	0.003	0.003	0.001	0.000	0.006	0.003	0.005	0.985
11/19/2012	2	0.005	0.006	0.005	0.001	0.007	0.002	0.006	0.985
11/19/2012	3	0.007	0.006	0.010	0.001	0.008	0.002	0.006	0.985
11/19/2012	4	0.007	0.005	0.009	0.002	0.009	0.002	0.008	0.985
11/19/2012	5	0.008	0.004	0.006	0.004	0.009	0.003	0.005	0.985
11/19/2012	6	0.006	0.003	0.006	0.003	0.007	0.003	0.003	0.985
11/19/2012	7	0.007	0.003	0.007	0.003	0.007	0.002	0.005	0.985
11/19/2012	8	0.007	0.001	0.004	0.003	0.006	0.003	0.006	0.985
11/19/2012	9	0.005	0.000	0.001	0.001	0.008	0.005	0.005	0.985
11/19/2012	10	0.007	0.004	0.003	-0.002	0.007	0.003	0.003	0.985
11/19/2012	11	0.005	0.004	0.004	-0.004	0.003	0.002	0.005	0.985
11/19/2012	12	0.004	0.001	0.003	-0.003	0.005	0.005	0.004	0.985
11/19/2012	13	0.007	0.001	0.007	0.001	0.006	0.002	0.004	0.985
11/19/2012	14	0.005	0.002	0.006	0.002	0.005	0.003	0.007	0.985
11/19/2012	15	0.003	0.003	0.002	0.003	0.003	0.004	0.003	0.985
11/19/2012	16	0.005	0.002	0.002	0.002	0.030	0.005	0.003	0.985
11/19/2012	17	0.006	0.002	0.005	0.000	0.005	0.004	0.006	0.985
11/19/2012	18	0.007	0.004	0.006	0.001	0.006	0.001	0.004	0.985
11/19/2012	19	0.007	0.005	0.115	0.007	0.007	0.003	0.005	0.985
11/19/2012	20	0.008	0.005	0.006	0.007	0.006	0.006	0.005	0.985
11/19/2012	21	0.007	0.006	0.017	0.003	0.006	0.004	0.007	0.985
11/19/2012	22	0.004	0.006	0.005	0.002	0.004	0.001	0.006	0.985
11/19/2012	23	0.003	0.004	0.006	0.002	0.004	0.003	0.002	0.985
11/20/2012	0	0.004	0.005	0.006	0.004	0.005	0.003	0.004	0.985
11/20/2012	1	0.002	0.003	0.007	0.002	0.003	0.004	0.005	0.985
11/20/2012	2	0.002	0.003	0.008	0.000	0.005	0.003	0.005	0.985
11/20/2012	3	0.005	0.002	0.009	0.000	0.004	0.003	0.006	0.985
11/20/2012	4	0.005	0.001	0.008	0.001	0.004	0.004	0.005	0.985
11/20/2012	5	0.005	0.005	0.005	0.001	0.006	0.003	0.003	0.985
11/20/2012	6	0.007	0.005	0.007	0.002	0.004	0.004	0.002	0.985
11/20/2012	7	0.007	0.004	0.008	0.004	0.010	0.006	0.005	0.985
11/20/2012	8	0.006	0.004	0.008	0.003	0.011	0.004	0.008	0.985
11/20/2012	9	0.006	0.004	0.754	0.002	0.010	0.000	0.007	0.985
11/20/2012	10	0.985	0.004	0.002	0.001	0.015	-0.001	0.005	0.985
11/20/2012	11	0.006	0.003	0.002	0.000	0.006	0.001	0.003	0.004
11/20/2012	12	0.004	0.000	0.003	0.001	0.008	0.003	0.002	0.002
11/20/2012	13	0.002	0.001	0.004	-0.002	0.008	0.002	0.004	0.003
11/20/2012	14	0.003	0.006	0.001	-0.004	0.004	-0.001	0.008	0.005
11/20/2012	15	0.004	0.004	0.002	0.003	0.004	0.000	0.006	0.005
11/20/2012	16	0.005	0.002	0.006	0.005	0.004	0.001	0.006	0.005
11/20/2012	17	0.004	0.001	0.005	0.000	0.003	0.000	0.006	0.003
11/20/2012	18	0.005	0.002	0.005	0.000	0.007	0.001	0.008	0.005
11/20/2012	19	0.006	0.004	0.008	0.002	0.009	0.003	0.010	0.003
11/20/2012	20	0.003	0.004	0.006	0.002	0.007	0.005	0.021	0.003
11/20/2012	21	0.003	0.005	0.005	0.000	0.007	0.005	0.010	0.005
11/20/2012	22	0.005	0.005	0.005	0.000	0.006	0.002	0.008	0.004
11/20/2012	23	0.005	0.001	0.006	0.002	0.005	0.000	0.006	0.001



DESERT SUNLIGHT SOLAR FARM

TABLE 3 - HOURLY BAM DATA

(Please refer to Table 3 cover page for additional details.)

All values are in units of milligrams per cubic meter.

Date	Hour	North Station		East Station		South Station		West Station	
		PM10	PM2.5	PM10	PM2.5	PM10	PM2.5	PM10	PM2.5
11/21/2012	0	0.005	0.000	0.010	0.003	0.006	0.002	0.004	0.000
11/21/2012	1	0.006	0.001	0.008	0.003	0.006	0.002	0.004	0.002
11/21/2012	2	0.005	0.001	0.002	-0.001	0.005	0.001	0.004	0.003
11/21/2012	3	0.005	0.003	0.002	0.000	0.004	0.002	0.003	0.004
11/21/2012	4	0.004	0.003	0.006	0.004	0.003	0.003	0.005	0.004
11/21/2012	5	0.003	0.001	0.007	0.004	0.004	0.002	0.004	0.004
11/21/2012	6	0.003	0.003	0.006	0.003	0.006	0.002	0.004	0.001
11/21/2012	7	0.017	0.006	0.009	0.004	0.010	0.002	0.006	0.001
11/21/2012	8	0.009	0.006	0.008	0.002	0.010	0.004	0.006	0.002
11/21/2012	9	0.009	0.003	0.005	0.002	0.010	0.004	0.008	-0.001
11/21/2012	10	0.010	0.003	0.006	0.001	0.011	0.000	0.007	0.000
11/21/2012	11	0.009	0.002	0.006	-0.003	0.008	-0.001	0.006	0.002
11/21/2012	12	0.008	0.000	0.003	-0.002	0.006	0.002	0.005	0.002
11/21/2012	13	0.007	-0.001	0.003	0.002	0.006	0.002	0.004	0.001
11/21/2012	14	0.003	-0.002	0.004	-0.001	0.032	-0.001	0.005	0.000
11/21/2012	15	0.005	0.002	0.004	-0.003	0.009	-0.002	0.007	0.001
11/21/2012	16	0.006	0.005	0.006	0.004	0.137	0.002	0.006	0.003
11/21/2012	17	0.005	0.002	0.008	0.002	0.005	0.004	0.008	0.003
11/21/2012	18	0.007	0.001	0.008	0.002	0.008	0.003	0.019	0.004
11/21/2012	19	0.007	0.001	0.007	0.003	0.009	0.001	0.003	0.004
11/21/2012	20	0.005	0.002	0.009	0.001	0.006	0.002	0.005	0.004
11/21/2012	21	0.005	0.002	0.012	0.002	0.004	0.004	0.004	0.005
11/21/2012	22	0.002	0.003	0.012	0.001	0.003	0.003	0.003	0.006
11/21/2012	23	0.001	0.005	0.008	0.000	0.003	0.001	0.003	0.005
11/22/2012	0	0.005	0.003	0.007	0.001	0.007	0.000	0.004	0.003
11/22/2012	1	0.008	0.003	0.006	0.003	0.010	0.001	0.005	0.004
11/22/2012	2	0.010	0.004	0.009	0.001	0.009	0.002	0.008	0.002
11/22/2012	3	0.012	0.005	0.015	0.000	0.011	0.001	0.012	0.002
11/22/2012	4	0.011	0.007	0.019	0.002	0.010	0.002	0.010	0.001
11/22/2012	5	0.009	0.006	0.005	0.004	0.008	0.004	0.008	0.001
11/22/2012	6	0.009	0.006	0.004	0.004	0.009	0.003	0.008	0.003
11/22/2012	7	0.009	0.005	0.017	0.005	0.017	0.002	0.009	0.003
11/22/2012	8	0.010	0.002	0.004	0.002	0.029	0.002	0.008	0.004
11/22/2012	9	0.009	0.002	0.008	-0.002	0.055	0.003	0.008	0.003
11/22/2012	10	0.010	0.003	0.009	0.001	0.021	0.004	0.007	0.001
11/22/2012	11	0.009	0.000	0.016	0.000	0.019	0.003	0.006	0.001
11/22/2012	12	0.008	0.000	0.003	0.000	0.005	0.002	0.006	0.000
11/22/2012	13	0.006	0.002	0.001	-0.001	0.006	0.001	0.007	0.001
11/22/2012	14	0.005	0.002	0.000	0.002	0.006	0.002	0.008	0.003
11/22/2012	15	0.006	0.004	0.005	0.006	0.002	0.004	0.005	0.001
11/22/2012	16	0.008	0.007	0.017	0.004	0.005	0.003	0.006	0.003
11/22/2012	17	0.009	0.004	0.006	0.001	0.009	0.001	0.006	0.004
11/22/2012	18	0.009	0.002	0.016	0.000	0.010	0.001	0.003	0.004
11/22/2012	19	0.008	0.002	0.008	0.002	0.010	0.002	0.005	0.004
11/22/2012	20	0.007	0.005	0.009	0.003	0.008	0.001	0.007	0.004
11/22/2012	21	0.007	0.008	0.008	0.003	0.007	0.003	0.008	0.005
11/22/2012	22	0.009	0.006	0.007	0.004	0.010	0.004	0.009	0.002
11/22/2012	23	0.012	0.004	0.007	0.005	0.011	0.004	0.009	0.002



DESERT SUNLIGHT SOLAR FARM

TABLE 3 - HOURLY BAM DATA

(Please refer to Table 3 cover page for additional details.)

All values are in units of milligrams per cubic meter.

Date	Hour	North Station		East Station		South Station		West Station	
		PM10	PM2.5	PM10	PM2.5	PM10	PM2.5	PM10	PM2.5
11/23/2012	0	0.012	0.005	0.006	0.004	0.010	0.004	0.009	0.003
11/23/2012	1	0.008	0.007	0.005	0.003	0.007	0.003	0.008	0.002
11/23/2012	2	0.011	0.004	0.007	0.002	0.009	0.004	0.008	0.006
11/23/2012	3	0.013	0.004	0.010	0.002	0.012	0.004	0.010	0.007
11/23/2012	4	0.012	0.006	0.011	0.003	0.011	0.003	0.008	0.006
11/23/2012	5	0.013	0.004	0.008	0.002	0.008	0.001	0.006	0.006
11/23/2012	6	0.013	0.005	0.005	0.002	0.010	-0.001	0.006	0.004
11/23/2012	7	0.009	0.008	0.006	0.002	0.011	0.001	0.006	0.002
11/23/2012	8	0.009	0.005	0.009	0.001	0.006	0.001	0.003	0.002
11/23/2012	9	0.016	0.002	0.008	0.001	0.006	0.001	0.005	0.002
11/23/2012	10	0.008	0.005	0.006	0.001	0.017	0.000	0.008	0.000
11/23/2012	11	0.007	0.002	0.007	0.000	0.006	-0.001	0.006	0.002
11/23/2012	12	0.008	-0.001	0.006	0.000	0.005	0.000	0.005	0.002
11/23/2012	13	0.009	0.000	0.003	0.001	0.003	0.003	0.006	0.000
11/23/2012	14	0.006	0.003	0.002	0.000	0.004	0.003	0.007	0.000
11/23/2012	15	0.008	0.002	0.001	-0.001	0.006	0.000	0.005	-0.001
11/23/2012	16	0.006	0.000	0.023	0.001	0.005	0.003	0.002	0.001
11/23/2012	17	0.005	0.002	0.008	0.000	0.005	0.005	0.004	0.003
11/23/2012	18	0.006	0.004	0.008	0.001	0.004	0.001	0.008	0.002
11/23/2012	19	0.005	0.005	0.009	-0.001	0.004	0.001	0.010	0.002
11/23/2012	20	0.004	0.007	0.018	-0.001	0.007	0.004	0.006	0.002
11/23/2012	21	0.004	0.007	0.006	0.002	0.008	0.004	0.004	0.002
11/23/2012	22	0.006	0.003	0.006	0.000	0.009	0.002	0.006	0.002
11/23/2012	23	0.006	0.002	0.006	0.000	0.010	0.002	0.007	0.003
11/24/2012	0	0.007	0.004	0.010	0.002	0.007	0.002	0.021	0.003
11/24/2012	1	0.010	0.003	0.011	0.002	0.006	0.002	0.008	0.002
11/24/2012	2	0.011	0.004	0.010	-0.001	0.008	0.001	0.008	0.000
11/24/2012	3	0.011	0.005	0.009	-0.001	0.010	0.000	0.009	-0.001
11/24/2012	4	0.009	0.003	0.009	-0.001	0.007	0.002	0.009	0.000
11/24/2012	5	0.009	0.003	0.010	0.001	0.005	0.001	0.007	0.000
11/24/2012	6	0.010	0.002	0.009	0.002	0.006	-0.001	0.005	0.002
11/24/2012	7	0.010	0.005	0.009	0.002	0.010	0.001	0.007	0.001
11/24/2012	8	0.013	0.005	0.010	0.003	0.010	0.002	0.010	0.000
11/24/2012	9	0.013	0.004	0.008	0.000	0.008	0.001	0.009	0.001
11/24/2012	10	0.012	0.003	0.007	-0.003	0.008	0.000	0.008	0.000
11/24/2012	11	0.008	0.002	0.007	0.001	0.009	0.000	0.006	-0.001
11/24/2012	12	0.006	0.003	0.004	0.001	0.011	0.000	0.004	0.000
11/24/2012	13	0.006	0.002	0.032	0.002	0.008	0.001	0.004	0.001
11/24/2012	14	0.006	0.001	0.002	0.000	0.005	0.001	0.006	-0.002
11/24/2012	15	0.006	0.001	0.003	-0.001	0.004	0.001	0.008	0.000
11/24/2012	16	0.008	0.002	0.005	0.003	0.005	0.001	0.009	0.004
11/24/2012	17	0.010	0.003	0.008	0.003	0.006	0.001	0.012	0.004
11/24/2012	18	0.008	0.005	0.024	0.001	0.006	0.000	0.009	0.003
11/24/2012	19	0.008	0.006	0.009	0.005	0.006	0.001	0.038	0.001
11/24/2012	20	0.006	0.004	0.009	0.007	0.009	0.002	0.006	0.000
11/24/2012	21	0.006	0.004	0.010	0.005	0.008	0.001	0.005	0.002
11/24/2012	22	0.007	0.004	0.008	0.004	0.007	0.003	0.006	0.003
11/24/2012	23	0.007	0.003	0.006	0.005	0.008	0.004	0.009	0.003



DESERT SUNLIGHT SOLAR FARM

TABLE 3 - HOURLY BAM DATA

(Please refer to Table 3 cover page for additional details.)

All values are in units of milligrams per cubic meter.

Date	Hour	North Station		East Station		South Station		West Station	
		PM10	PM2.5	PM10	PM2.5	PM10	PM2.5	PM10	PM2.5
11/25/2012	0	0.006	0.002	0.045	0.004	0.009	0.004	0.006	0.004
11/25/2012	1	0.006	0.005	0.006	0.003	0.008	0.002	0.004	0.004
11/25/2012	2	0.009	0.005	0.006	0.001	0.008	0.003	0.003	0.003
11/25/2012	3	0.015	0.003	0.009	0.002	0.008	0.002	0.004	0.002
11/25/2012	4	0.013	0.004	0.014	0.003	0.007	0.003	0.006	0.001
11/25/2012	5	0.011	0.005	0.013	0.004	0.007	0.005	0.008	0.002
11/25/2012	6	0.011	0.002	0.013	0.006	0.010	0.002	0.010	0.003
11/25/2012	7	0.015	0.005	0.011	0.006	0.010	0.001	0.008	0.003
11/25/2012	8	0.012	0.005	0.011	0.004	0.010	0.002	0.005	0.001
11/25/2012	9	0.015	0.001	0.011	0.001	0.010	0.004	0.017	0.000
11/25/2012	10	0.006	-0.001	0.009	0.000	0.007	0.003	0.006	0.000
11/25/2012	11	0.009	-0.001	0.009	0.001	0.004	0.001	0.006	0.001
11/25/2012	12	0.011	-0.003	0.015	0.001	0.008	0.003	0.008	0.004
11/25/2012	13	0.011	-0.002	0.012	-0.001	0.011	0.002	0.010	0.002
11/25/2012	14	0.010	0.001	0.008	0.002	0.009	0.002	0.010	0.002
11/25/2012	15	0.009	0.000	0.005	0.002	0.009	0.001	0.007	0.002
11/25/2012	16	0.009	0.000	0.004	0.001	0.007	-0.001	0.006	0.000
11/25/2012	17	0.008	0.004	0.008	0.001	0.006	0.000	0.007	0.003
11/25/2012	18	0.008	0.006	0.011	0.002	0.008	0.000	0.083	0.004
11/25/2012	19	0.008	0.007	0.010	0.003	0.010	0.001	0.007	0.002
11/25/2012	20	0.008	0.005	0.010	0.004	0.009	0.002	0.008	0.002
11/25/2012	21	0.008	0.002	0.007	0.004	0.007	0.002	0.009	0.004
11/25/2012	22	0.011	0.001	0.020	0.002	0.009	0.005	0.009	0.003
11/25/2012	23	0.010	0.003	0.009	0.003	0.010	0.006	0.008	0.000
11/26/2012	0	0.005	0.006	0.009	0.003	0.010	0.004	0.007	0.004
11/26/2012	1	0.006	0.006	0.008	0.002	0.010	0.005	0.006	0.004
11/26/2012	2	0.009	0.007	0.009	0.001	0.010	0.006	0.007	0.002
11/26/2012	3	0.010	0.007	0.010	0.001	0.009	0.004	0.010	0.002
11/26/2012	4	0.010	0.005	0.010	0.002	0.006	0.004	0.008	0.001
11/26/2012	5	0.010	0.006	0.016	0.003	0.008	0.006	0.010	0.003
11/26/2012	6	0.009	0.006	0.008	0.004	0.021	0.005	0.012	0.005
11/26/2012	7	0.010	0.005	0.011	0.004	0.023	0.003	0.009	0.005
11/26/2012	8	0.010	0.006	-0.015	0.005	0.017	0.003	0.005	0.004
11/26/2012	9	0.020	0.007	0.014	0.003	0.020	0.003	0.006	0.002
11/26/2012	10	0.010	0.005	0.012	-0.001	0.014	0.002	0.007	0.001
11/26/2012	11	0.010	0.003	0.011	0.000	0.012	0.003	0.007	-0.001
11/26/2012	12	0.010	0.003	0.009	0.001	0.011	0.001	0.010	0.000
11/26/2012	13	0.008	0.004	0.007	0.000	0.008	0.000	0.013	0.001
11/26/2012	14	0.008	0.003	0.008	0.003	0.009	0.002	0.011	0.002
11/26/2012	15	0.010	0.003	0.007	0.003	0.011	0.000	0.009	0.002
11/26/2012	16	0.011	0.002	0.007	0.018	0.043	0.001	0.007	0.005
11/26/2012	17	0.012	0.003	0.011	0.005	0.015	0.004	0.008	0.006
11/26/2012	18	0.011	0.007	0.013	0.005	0.017	0.004	0.016	0.004
11/26/2012	19	0.010	0.006	0.016	0.008	0.011	0.003	0.007	0.004
11/26/2012	20	0.012	0.005	0.017	0.009	0.011	0.003	0.008	0.003
11/26/2012	21	0.010	0.005	0.014	0.006	0.010	0.003	0.008	0.001
11/26/2012	22	0.009	0.006	0.011	0.004	0.010	0.003	0.006	0.002
11/26/2012	23	0.009	0.007	0.007	0.003	0.012	0.003	0.006	0.003



DESERT SUNLIGHT SOLAR FARM

TABLE 3 - HOURLY BAM DATA

(Please refer to Table 3 cover page for additional details.)

All values are in units of milligrams per cubic meter.

Date	Hour	North Station		East Station		South Station		West Station	
		PM10	PM2.5	PM10	PM2.5	PM10	PM2.5	PM10	PM2.5
11/27/2012	0	0.007	0.004	0.154	0.008	0.008	0.003	0.006	0.002
11/27/2012	1	0.006	0.003	0.010	0.010	0.007	0.001	0.005	0.002
11/27/2012	2	0.008	0.004	0.011	0.010	0.008	0.001	0.006	0.003
11/27/2012	3	0.008	0.005	0.010	0.011	0.005	0.001	0.005	0.004
11/27/2012	4	0.010	0.006	0.017	0.006	0.007	0.003	0.006	0.004
11/27/2012	5	0.009	0.006	0.007	0.004	0.008	0.006	0.009	0.002
11/27/2012	6	0.010	0.005	0.011	0.005	0.009	0.006	0.007	0.002
11/27/2012	7	0.012	0.003	0.010	0.001	0.011	0.003	0.006	0.005
11/27/2012	8	0.011	0.004	0.006	0.002	0.012	0.001	0.007	0.005
11/27/2012	9	0.011	0.004	0.009	0.005	0.013	0.001	0.007	0.003
11/27/2012	10	0.011	0.004	0.019	0.001	0.012	0.001	0.007	0.002
11/27/2012	11	0.007	0.003	0.003	-0.002	0.015	0.001	0.006	0.000
11/27/2012	12	0.006	0.001	0.003	-0.001	0.007	0.002	0.003	0.000
11/27/2012	13	0.006	0.002	0.003	0.000	0.008	0.002	0.015	0.001
11/27/2012	14	0.006	0.002	0.006	0.000	0.021	0.002	0.006	0.002
11/27/2012	15	0.007	0.003	0.008	0.001	0.008	0.002	0.005	0.004
11/27/2012	16	0.006	0.005	0.007	0.000	0.007	0.001	0.006	0.002
11/27/2012	17	0.005	0.004	0.009	0.002	0.009	0.003	0.008	0.002
11/27/2012	18	0.009	0.004	0.011	0.004	0.011	0.004	0.008	0.003
11/27/2012	19	0.013	0.006	0.013	0.004	0.010	0.005	0.007	0.004
11/27/2012	20	0.012	0.005	0.013	0.005	0.010	0.005	0.006	0.006
11/27/2012	21	0.008	0.004	0.010	0.005	0.011	0.005	0.029	0.005
11/27/2012	22	0.008	0.004	0.007	0.003	0.013	0.005	0.005	0.004
11/27/2012	23	0.008	0.005	0.007	0.006	0.013	0.002	0.005	0.004
11/28/2012	0	0.007	0.005	0.008	0.009	0.010	0.003	0.005	0.002
11/28/2012	1	0.006	0.004	0.019	0.006	0.008	0.005	0.008	0.003
11/28/2012	2	0.004	0.006	0.010	0.004	0.006	0.005	0.008	0.005
11/28/2012	3	0.005	0.006	0.008	0.003	0.005	0.002	0.006	0.003
11/28/2012	4	0.007	0.004	0.007	0.002	0.006	0.002	0.007	0.002
11/28/2012	5	0.009	0.003	0.010	0.002	---	---	0.008	0.004
11/28/2012	6	0.009	0.004	0.010	0.001	---	---	0.008	0.005
11/28/2012	7	0.008	0.004	0.009	0.002	---	---	0.006	0.005
11/28/2012	8	0.009	0.005	0.020	0.004	0.985	0.985	0.006	0.003
11/28/2012	9	0.007	0.006	0.012	-0.015	-0.003	-0.011	0.006	0.000
11/28/2012	10	-0.015	0.004	0.008	0.004	-0.003	-0.010	0.007	0.003
11/28/2012	11	0.013	0.003	0.002	0.001	-0.004	-0.006	0.016	0.003
11/28/2012	12	0.009	0.003	0.003	-0.003	-0.001	-0.004	0.009	0.002
11/28/2012	13	0.006	0.002	0.008	0.000	0.006	-0.002	0.011	0.001
11/28/2012	14	0.008	0.001	0.010	0.003	0.007	0.001	0.011	0.002
11/28/2012	15	0.009	0.001	0.011	0.002	0.009	0.002	0.011	0.004
11/28/2012	16	0.009	0.001	0.013	0.001	0.035	0.003	0.012	0.004
11/28/2012	17	0.011	0.004	0.012	0.003	0.014	0.004	0.012	0.006
11/28/2012	18	0.024	0.008	0.022	0.007	0.021	0.007	0.014	0.007
11/28/2012	19	0.017	0.009	0.018	0.010	0.016	0.009	0.016	0.007
11/28/2012	20	0.020	0.007	0.021	0.009	0.023	0.007	0.017	0.007
11/28/2012	21	0.021	0.010	0.024	0.009	0.020	0.016	0.013	0.007
11/28/2012	22	0.019	0.009	0.024	0.008	0.021	0.009	0.021	0.008
11/28/2012	23	0.018	0.009	0.029	0.009	0.028	0.010	0.020	0.009



DESERT SUNLIGHT SOLAR FARM

TABLE 3 - HOURLY BAM DATA

(Please refer to Table 3 cover page for additional details.)

All values are in units of milligrams per cubic meter.

Date	Hour	North Station		East Station		South Station		West Station	
		PM10	PM2.5	PM10	PM2.5	PM10	PM2.5	PM10	PM2.5
11/29/2012	0	0.019	0.012	0.025	0.011	0.020	0.010	0.017	0.007
11/29/2012	1	0.022	0.010	0.019	0.008	0.022	0.008	0.019	0.007
11/29/2012	2	0.016	0.009	0.019	0.006	0.023	0.009	0.021	0.006
11/29/2012	3	0.022	0.010	0.016	0.007	0.019	0.009	0.016	0.006
11/29/2012	4	0.018	0.010	0.019	0.007	0.012	0.006	0.017	0.005
11/29/2012	5	0.015	0.009	0.016	0.006	0.012	0.006	0.011	0.006
11/29/2012	6	0.014	0.009	0.015	0.006	0.013	0.006	0.010	0.008
11/29/2012	7	0.016	0.007	0.015	0.007	0.018	0.006	0.009	0.005
11/29/2012	8	0.008	0.005	0.021	0.006	0.017	0.004	0.010	0.002
11/29/2012	9	0.018	0.985	0.023	0.003	0.030	0.003	0.017	0.003
11/29/2012	10	0.985	0.985	0.014	0.003	0.012	0.004	0.023	0.006
11/29/2012	11	0.024	0.006	0.017	0.005	0.019	0.005	0.022	0.007
11/29/2012	12	0.007	0.003	0.013	0.005	0.014	0.006	0.010	0.003
11/29/2012	13	0.010	0.000	0.010	0.003	0.014	0.006	0.011	0.003
11/29/2012	14	0.009	0.001	0.006	0.001	0.010	0.003	0.010	0.003
11/29/2012	15	0.008	0.001	0.020	0.000	0.008	0.002	0.006	0.002
11/29/2012	16	0.007	0.000	0.010	-0.001	0.010	0.002	0.005	0.002
11/29/2012	17	0.005	0.000	0.006	-0.001	0.006	0.002	0.004	-0.001
11/29/2012	18	0.006	0.001	0.004	0.000	0.004	0.003	0.003	0.000
11/29/2012	19	0.006	0.002	0.004	0.002	0.003	0.003	0.004	0.003
11/29/2012	20	0.005	0.003	0.001	0.002	-0.001	0.002	0.004	0.002
11/29/2012	21	0.008	0.004	0.002	0.001	-0.001	0.000	0.002	0.001
11/29/2012	22	0.008	0.005	0.003	0.000	0.002	0.001	0.002	0.000
11/29/2012	23	0.008	0.003	0.025	0.002	0.005	0.003	0.001	0.000
11/30/2012	0	0.006	0.001	0.003	0.002	0.004	0.002	0.000	0.001
11/30/2012	1	0.004	0.000	0.002	0.002	0.002	0.001	0.001	0.001
11/30/2012	2	0.007	0.003	0.003	0.003	0.004	0.002	0.003	0.002
11/30/2012	3	0.009	0.005	0.006	0.000	0.004	0.003	0.002	0.001
11/30/2012	4	0.008	0.003	0.007	-0.001	0.005	0.003	0.002	0.000
11/30/2012	5	0.008	0.001	0.007	0.001	0.006	0.003	0.005	0.002
11/30/2012	6	0.009	-0.001	0.004	0.003	0.006	0.002	0.002	0.002
11/30/2012	7	0.008	0.000	0.005	0.002	0.006	0.001	0.004	0.001
11/30/2012	8	0.008	0.001	0.008	0.000	0.006	0.001	0.002	0.000
11/30/2012	9	0.008	0.001	0.007	0.001	0.005	0.001	0.000	-0.003
11/30/2012	10	0.985	0.002	0.003	0.000	0.002	0.000	0.004	-0.003
11/30/2012	11	0.005	0.002	0.001	-0.002	0.001	0.000	0.003	-0.002
11/30/2012	12	0.002	0.000	0.001	-0.001	0.001	0.002	0.000	0.000
11/30/2012	13	0.004	-0.002	0.000	0.000	0.001	0.003	0.004	0.002
11/30/2012	14	0.005	0.001	-0.001	0.000	0.004	0.001	0.004	0.002
11/30/2012	15	0.009	0.004	0.000	-0.001	0.005	0.001	0.001	0.002
11/30/2012	16	0.011	0.004	0.002	0.001	0.004	0.004	0.001	0.002
11/30/2012	17	0.009	0.003	0.003	0.002	0.007	0.006	0.003	0.002
11/30/2012	18	0.009	0.003	0.031	0.003	0.006	0.005	0.004	0.001
11/30/2012	19	0.006	0.001	0.004	0.003	0.004	0.001	0.001	0.003
11/30/2012	20	0.003	0.000	0.005	0.000	0.003	0.000	0.001	0.003
11/30/2012	21	0.004	0.001	0.004	0.002	0.002	-0.001	0.006	0.001
11/30/2012	22	0.006	-0.001	0.003	0.003	0.002	0.000	0.007	0.003
11/30/2012	23	0.006	0.001	0.004	0.004	0.003	0.003	0.004	0.003



Table 4

Monitored Constituents

The table below shows the sample dates. Table 4 is on the following page.

Station	Week	Sample Date	Sample ID	Work Order	Duration
North	Week 1	11/7/2012	QFF 12-227	1231854	24
	Week 2	11/13/2012	QFF 12-228	1232146	24
	Week 3	11/20/2012	QFF 12-237	1233239	24
	Week 4	11/27/2012	QFF 12-238	1233571	24
East	Week 1	11/7/2012	QFF 12-226	1231853	24
	Week 2	11/13/2012	QFF 12-230	1232148	19
	Week 3	11/20/2012	QFF 12-236	1233238	24
	Week 4	11/27/2012	QFF 12-234	1233570	24
West	Week 1	11/7/2012	QFF 12-225	1231852	24
	Week 2	11/13/2012	QFF 12-229	1232147	24
	Week 3	11/20/2012	QFF 12-232	1233236	24
	Week 4	11/27/2012	QFF 12-239	1233574	24
South	Week 1	---	---	---	---
	Week 2	11/13/2012	QFF 12-231	1232150	24
	Week 3	11/20/2012	QFF 12-235	1233237	24
	Week 4	11/27/2012	QFF 12-233	1233569	20.5

Note 1: South Station pump motor not functional during Week 1.



Table 4: Monitored Constituents See Footnotes

Analyte	Week	North Station	East Station	West Station	South Station
Elemental Carbon	Week 1	0.7	0.38	0.52	---
	Week 2	0.34	0.16	0.18	0.14
	Week 3	0.22	0.35	0.15	0.21
	Week 4	0.27	0.56	0.14	0.32
Arsenic	Week 1	0.024	< LOD	< LOD	---
	Week 2	< LOD	< LOD	< LOD	< LOD
	Week 3	< LOD	< LOD	0.017	< LOD
	Week 4	< LOD	< LOD	< LOD	< LOD
Beryllium	Week 1	< LOD	< LOD	< LOD	---
	Week 2	< LOD	< LOD	< LOD	< LOD
	Week 3	< LOD	< LOD	< LOD	< LOD
	Week 4	< LOD	< LOD	< LOD	< LOD
Cadmium	Week 1	< LOD	< LOD	< LOD	---
	Week 2	< LOD	< LOD	< LOD	< LOD
	Week 3	< LOD	< LOD	< LOD	< LOD
	Week 4	< LOD	< LOD	< LOD	< LOD
Copper	Week 1	0.024	0.026	0.11	---
	Week 2	0.026	0.031	0.058	0.016
	Week 3	0.023	0.032	0.2	0.017
	Week 4	0.038	0.025	0.057	0.03
Lead	Week 1	< LOD	< LOD	< LOD	---
	Week 2	0.012	< LOD	0.01	0.0088
	Week 3	< LOD	< LOD	< LOD	< LOD
	Week 4	< LOD	< LOD	< LOD	< LOD
Manganese	Week 1	0.009	0.014	0.011	---
	Week 2	0.013	0.0086	0.0081	0.023
	Week 3	0.0085	0.0054	0.0075	0.0083
	Week 4	0.0071	0.011	0.0083	0.01
Nickel	Week 1	< LOD	< LOD	< LOD	---
	Week 2	< LOD	< LOD	< LOD	< LOD
	Week 3	< LOD	< LOD	< LOD	< LOD
	Week 4	< LOD	< LOD	< LOD	< LOD
Selenium	Week 1	< LOD	< LOD	< LOD	---
	Week 2	0.022	0.021	0.021	0.018
	Week 3	< LOD	< LOD	< LOD	< LOD
	Week 4	< LOD	< LOD	< LOD	< LOD

Note 1: All values are in units of micrograms per cubic meter.

Note 2: < LOD = Less than Limit of Detection (LOD).

Note 3: Sample dates are shown in the cover page for this table.

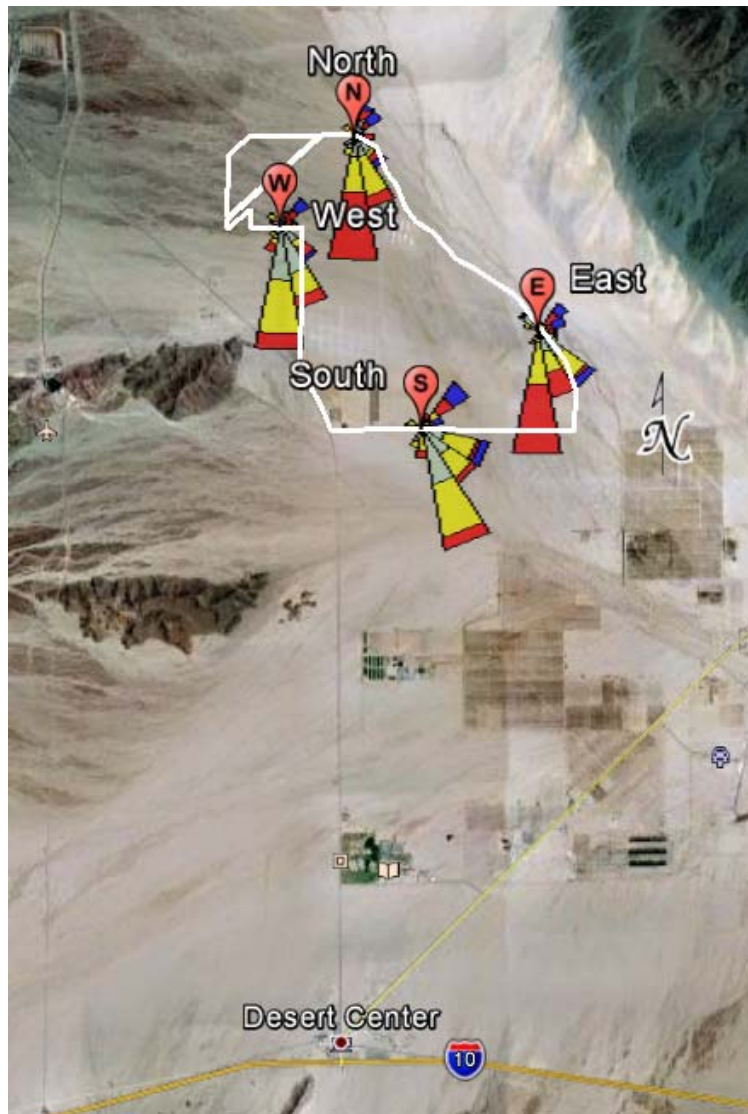


Figure 1: Meteorological Data Summary

The triangles in Figure 1 indicate the direction the wind was blowing **to** rather than **from**. The table below provides a brief explanation of the various wind speed classes.

Color	Wind Speed (knots)
Cyan	≥ 22 knots
Green	17 – 21 knots
Blue	11 – 17 knots
Red	7 – 11 knots
Yellow	4 – 7 knots
Light Green	1 – 4 knots