

DOCKETED

Docket Number:	09-AFC-07C
Project Title:	Palen Solar Power Project - Compliance
TN #:	201286
Document Title:	Exh. 3073 Desert Sunlight Air Quality Monitoring Report August 2012
Description:	AQ Monitoring Report
Filer:	Ileene Anderson
Organization:	Center for Biological Diversity
Submitter Role:	Intervenor
Submission Date:	11/21/2013 4:22:58 PM
Docketed Date:	11/21/2013

**Desert Sunlight Solar Farm
Air Quality Monitoring Report**

August 2012





Report Index

Tables/Figures

Number	Table/Figure Name
Table 1	PM10 24-hour Time-Weighted Averages, All Sites
Table 2	PM2.5 24-hour Time-Weighted Averages, All Sites
Table 3	Hourly BAM Data, All Sites
Table 4	Monitored Constituents
Figure 1	Meteorological Data Summary



**Table 1: PM10 24-hour Time-Weighted Averages, All Sites
(See Footnotes)**

All values are in units of micrograms per cubic meter.

Date	North Station	East Station	South Station	West Station
8/1/2012	3	2	5	3
8/2/2012	5	---	6	5
8/3/2012	15	13	20	12
8/4/2012	18	15	14	13
8/5/2012	28	26	21	18
8/6/2012	24	24	33	23
8/7/2012	20	15	32	16
8/8/2012	17	12	22	18
8/9/2012	105	127	134	107
8/10/2012	48	49	53	47
8/11/2012	66	21	54	105
8/12/2012	20	14	16	16
8/13/2012	51	60	45	25
8/14/2012	32	48	---	30
8/15/2012	155	139	---	123
8/16/2012	23	7	15	14
8/17/2012	16	6	8	8
8/18/2012	6	3	7	---
8/19/2012	8	5	6	---
8/20/2012	10	7	13	---
8/21/2012	16	13	16	21
8/22/2012	38	28	26	36
8/23/2012	8	---	8	8
8/24/2012	17	14	16	15
8/25/2012	14	12	12	13
8/26/2012	33	21	22	28
8/27/2012	10	8	19	7
8/28/2012	9	8	17	8
8/29/2012	50	34	20	18
8/30/2012	28	26	30	28
8/31/2012	28	21	22	26

Note 1: Please refer to Table 3 for the raw hourly data and treatment of valid and invalid values. All values in the above table are at actual conditions.

Note 2: Days marked 'No Data' are days for which there is no hourly data.

Note 3: Days marked (---) are days for which there is either more than 7 hours of negative data points or more than 12 hours of invalid data points.



**Table 2: PM2.5 24-hour Time-Weighted Averages, All Sites
(See Footnotes)**

All values are in units of micrograms per cubic meter.

Date	North Station	East Station	South Station	West Station
8/1/2012	---	---	---	3.9
8/2/2012	0.6	---	4.5	3.7
8/3/2012	3.3	---	8	5.7
8/4/2012	3.6	---	5.9	5.8
8/5/2012	3.5	1.1	---	5.3
8/6/2012	3.3	0.9	---	7.4
8/7/2012	3.8	-0.6	---	5
8/8/2012	2.5	-0.5	---	6
8/9/2012	16.7	17.9	---	57.6
8/10/2012	7.3	6	14.2	10.3
8/11/2012	13.8	2.1	---	15.3
8/12/2012	2.2	---	---	5.9
8/13/2012	4.3	2.9	7.1	6.5
8/14/2012	9.3	9.5	---	9.5
8/15/2012	20.3	---	---	21.5
8/16/2012	3.6	---	---	7.4
8/17/2012	---	0.5	---	---
8/18/2012	---	1.4	---	---
8/19/2012	---	---	---	---
8/20/2012	---	---	---	2.5
8/21/2012	---	---	---	4.1
8/22/2012	3.6	2	---	6
8/23/2012	---	---	---	4
8/24/2012	---	---	---	5.4
8/25/2012	---	---	---	3.2
8/26/2012	3.1	---	---	5
8/27/2012	---	---	---	2.1
8/28/2012	---	---	---	1.9
8/29/2012	---	3.2	---	4.4
8/30/2012	3.4	3.9	---	7
8/31/2012	3.7	4.6	---	48.3

Note 1: Please refer to Table 3 for the raw hourly data and treatment of valid and invalid values. All values in the above table are at actual conditions.

Note 2: Days marked 'No Data' are days for which there is no hourly data.

Note 3: Days marked (---) are days for which there is either more than 7 hours of negative data points or more than 12 hours of invalid data points.



Table 3

Hourly BAM Data, All Stations

Please note the following:

1. PM10 and PM2.5 are at actual conditions.
2. Hours for which there are no BAM data are marked "---"
3. Data marked with **bold red** text is invalid due to either an error code produced by the BAM or hourly wind speed > 25 mph or an out-of-range concentration.
4. Data marked with **bold green** text is valid. However, this data is highlighted since there was either a "warning" error code or hourly shelter temperature change exceeding the instrument tolerance.



DESERT SUNLIGHT SOLAR FARM

TABLE 3 - HOURLY BAM DATA

(Please refer to Table 3 cover page for additional details.)

All values are in units of milligrams per cubic meter.

Date	Hour	North Station		East Station		South Station		West Station	
		PM10	PM2.5	PM10	PM2.5	PM10	PM2.5	PM10	PM2.5
8/1/2012	0	0.000	0.003	0.985	0.985	0.002	0.985	0.001	0.003
8/1/2012	1	0.000	-0.003	0.985	0.985	0.000	0.985	0.002	0.003
8/1/2012	2	0.001	-0.002	0.985	0.985	0.002	0.985	0.004	0.001
8/1/2012	3	0.002	0.001	0.985	0.985	0.003	0.985	0.002	0.000
8/1/2012	4	0.002	-0.002	0.985	0.985	0.002	0.985	0.001	0.003
8/1/2012	5	0.002	-0.003	0.985	0.985	0.000	0.985	0.002	0.005
8/1/2012	6	-0.001	0.000	0.985	0.985	0.003	0.985	0.002	0.005
8/1/2012	7	-0.001	0.001	0.985	0.985	0.009	0.985	0.004	0.006
8/1/2012	8	0.002	0.000	0.985	0.985	0.008	0.985	0.006	0.005
8/1/2012	9	0.002	0.002	0.985	0.985	0.005	0.005	0.001	0.007
8/1/2012	10	0.003	0.000	0.002	0.001	0.007	0.007	0.001	0.009
8/1/2012	11	0.006	0.001	0.006	-0.003	0.008	0.003	0.004	0.006
8/1/2012	12	0.006	0.001	0.006	-0.005	0.005	0.002	0.006	0.005
8/1/2012	13	0.005	-0.001	0.004	-0.007	0.009	0.003	0.003	0.003
8/1/2012	14	0.985	0.985	-0.002	-0.003	0.013	0.985	-0.001	0.003
8/1/2012	15	0.985	-0.003	-0.002	-0.002	0.012	0.985	0.001	0.002
8/1/2012	16	0.007	-0.003	0.003	-0.001	0.016	0.985	0.005	0.002
8/1/2012	17	0.007	-0.006	0.001	0.001	-0.002	0.985	0.004	0.005
8/1/2012	18	0.005	-0.007	0.001	-0.006	0.002	0.985	0.001	0.006
8/1/2012	19	0.002	-0.003	0.003	-0.006	0.006	0.985	0.001	0.003
8/1/2012	20	0.000	-0.002	0.002	0.002	0.004	0.985	0.001	0.001
8/1/2012	21	0.004	0.000	0.002	0.002	0.003	0.985	0.001	0.003
8/1/2012	22	0.007	0.000	0.001	0.002	0.003	0.002	0.003	0.004
8/1/2012	23	0.005	0.002	---	---	0.002	0.985	0.006	0.004
8/2/2012	0	0.004	0.001	---	---	0.001	0.985	0.005	0.005
8/2/2012	1	0.006	-0.002	---	---	0.001	0.985	0.002	0.004
8/2/2012	2	0.003	0.000	---	---	0.002	0.985	0.002	0.005
8/2/2012	3	0.004	-0.001	---	---	0.001	0.985	0.003	0.005
8/2/2012	4	0.006	-0.001	---	---	0.003	0.004	0.008	0.005
8/2/2012	5	0.005	0.000	---	---	---	---	0.010	0.006
8/2/2012	6	---	---	---	---	---	---	0.005	0.005
8/2/2012	7	---	---	---	---	---	---	0.006	0.006
8/2/2012	8	---	---	0.985	0.985	0.985	0.985	0.009	0.008
8/2/2012	9	0.985	0.985	-0.015	-0.015	-0.007	-0.001	0.006	0.007
8/2/2012	10	-0.010	-0.008	-0.011	-0.006	-0.002	0.985	0.003	0.004
8/2/2012	11	-0.008	-0.006	-0.008	-0.006	0.000	0.985	0.006	0.985
8/2/2012	12	0.004	0.001	-0.005	-0.006	0.004	0.985	0.007	0.003
8/2/2012	13	0.005	0.004	-0.003	-0.006	0.007	0.003	0.002	0.003
8/2/2012	14	0.000	0.002	0.000	-0.006	0.007	0.006	0.001	0.002
8/2/2012	15	0.006	-0.002	0.001	-0.008	0.009	0.005	0.001	0.001
8/2/2012	16	0.008	-0.002	0.002	-0.015	0.028	0.004	-0.001	-0.002
8/2/2012	17	0.006	-0.001	0.000	-0.005	0.006	0.003	-0.002	0.000
8/2/2012	18	0.004	-0.002	0.002	-0.004	0.005	0.003	0.005	0.002
8/2/2012	19	0.003	0.001	0.007	-0.004	0.004	0.007	0.008	0.001
8/2/2012	20	0.004	0.005	0.007	-0.004	0.007	0.009	0.003	0.002
8/2/2012	21	0.005	0.003	0.028	-0.004	0.011	0.006	0.005	0.002
8/2/2012	22	0.006	0.002	0.006	-0.001	0.011	0.006	0.010	0.006
8/2/2012	23	0.006	0.003	0.008	0.001	0.010	0.004	0.014	0.006



DESERT SUNLIGHT SOLAR FARM

TABLE 3 - HOURLY BAM DATA

(Please refer to Table 3 cover page for additional details.)

All values are in units of milligrams per cubic meter.

Date	Hour	North Station		East Station		South Station		West Station	
		PM10	PM2.5	PM10	PM2.5	PM10	PM2.5	PM10	PM2.5
8/3/2012	0	0.006	0.000	0.010	0.000	0.011	0.004	0.018	0.003
8/3/2012	1	0.008	0.001	0.008	0.002	0.009	0.006	0.003	0.002
8/3/2012	2	0.007	0.003	0.006	0.002	0.008	0.006	0.004	0.002
8/3/2012	3	0.008	0.000	0.008	0.001	0.011	0.006	0.004	0.007
8/3/2012	4	0.010	0.000	0.008	0.002	0.012	0.004	0.005	0.005
8/3/2012	5	0.011	0.002	0.017	-0.001	0.009	0.006	0.008	0.000
8/3/2012	6	0.009	-0.001	0.007	-0.002	0.016	0.009	0.006	0.005
8/3/2012	7	0.016	-0.001	0.006	-0.004	0.031	0.012	0.006	0.007
8/3/2012	8	0.013	0.005	0.008	-0.005	0.011	0.013	0.010	0.005
8/3/2012	9	0.011	0.006	0.021	-0.003	0.032	0.012	0.009	0.006
8/3/2012	10	0.024	0.006	0.018	0.002	0.045	0.010	0.022	0.008
8/3/2012	11	0.017	0.006	0.016	0.005	0.033	0.007	0.019	0.008
8/3/2012	12	0.019	0.005	0.012	0.000	0.034	0.007	0.015	0.007
8/3/2012	13	0.022	0.003	0.018	-0.001	0.046	0.009	0.016	0.008
8/3/2012	14	0.021	0.004	0.018	0.001	0.036	0.009	0.017	0.009
8/3/2012	15	0.024	0.005	0.014	0.002	0.013	0.008	0.010	0.007
8/3/2012	16	0.009	0.003	0.012	0.003	0.012	0.008	0.009	0.005
8/3/2012	17	0.017	0.003	0.011	-0.003	0.012	0.007	0.009	0.006
8/3/2012	18	0.017	0.003	0.011	-0.003	0.012	0.006	0.010	0.005
8/3/2012	19	0.018	0.005	0.018	0.003	0.017	0.008	0.017	0.006
8/3/2012	20	0.017	0.006	0.014	0.008	0.013	0.009	0.021	0.008
8/3/2012	21	0.014	0.005	0.015	0.006	0.021	0.008	0.012	0.007
8/3/2012	22	0.016	0.005	0.014	-0.001	0.015	0.009	0.015	0.005
8/3/2012	23	0.018	0.005	0.016	0.000	0.014	0.010	0.015	0.006
8/4/2012	0	0.016	0.003	0.014	-0.003	0.013	0.010	0.038	0.007
8/4/2012	1	0.014	0.005	0.012	-0.002	0.016	0.007	0.013	0.007
8/4/2012	2	0.014	0.005	0.015	0.003	0.009	0.005	0.011	0.006
8/4/2012	3	0.017	0.006	0.015	0.003	0.012	0.008	0.010	0.007
8/4/2012	4	0.020	0.006	0.017	0.003	0.020	0.009	0.009	0.009
8/4/2012	5	0.011	0.006	0.014	0.003	0.016	0.008	0.010	0.010
8/4/2012	6	0.019	0.006	0.017	0.003	0.017	0.009	0.013	0.009
8/4/2012	7	0.019	0.004	0.014	0.003	0.023	0.009	0.011	0.006
8/4/2012	8	0.013	0.004	0.014	0.001	0.012	0.008	0.012	0.005
8/4/2012	9	0.013	0.004	0.010	-0.001	0.012	0.006	0.017	0.007
8/4/2012	10	0.016	0.002	0.010	0.000	0.012	0.005	0.016	0.005
8/4/2012	11	0.014	-0.001	0.012	0.002	0.009	0.005	0.013	0.003
8/4/2012	12	0.029	-0.001	0.018	-0.003	0.016	0.004	0.012	0.003
8/4/2012	13	0.030	-0.001	0.011	-0.004	0.010	0.004	0.006	0.005
8/4/2012	14	0.054	0.002	0.011	-0.001	0.011	0.005	0.009	0.006
8/4/2012	15	0.012	0.004	0.009	-0.001	0.012	0.003	0.010	0.007
8/4/2012	16	0.018	0.003	0.027	-0.003	0.010	0.004	0.007	0.005
8/4/2012	17	0.013	0.005	0.009	-0.004	0.009	0.004	0.008	0.002
8/4/2012	18	0.012	0.004	0.010	-0.004	0.012	0.003	0.010	0.003
8/4/2012	19	0.013	0.002	0.022	-0.003	0.017	0.001	0.013	0.006
8/4/2012	20	0.021	0.002	0.025	-0.001	0.017	0.985	0.014	0.006
8/4/2012	21	0.013	0.005	0.014	0.001	0.016	0.985	0.014	0.004
8/4/2012	22	0.013	0.006	0.017	0.003	0.017	0.985	0.016	0.004
8/4/2012	23	0.016	0.005	0.014	0.002	0.014	0.985	0.014	0.007



DESERT SUNLIGHT SOLAR FARM

TABLE 3 - HOURLY BAM DATA

(Please refer to Table 3 cover page for additional details.)

All values are in units of milligrams per cubic meter.

Date	Hour	North Station		East Station		South Station		West Station	
		PM10	PM2.5	PM10	PM2.5	PM10	PM2.5	PM10	PM2.5
8/5/2012	0	0.017	0.003	0.093	0.003	0.013	0.985	0.016	0.011
8/5/2012	1	0.012	0.002	0.020	0.004	0.026	0.985	0.009	0.006
8/5/2012	2	0.015	0.002	0.026	0.004	0.027	0.985	0.016	0.003
8/5/2012	3	0.016	0.005	0.018	0.005	0.014	0.985	0.012	0.006
8/5/2012	4	0.015	0.005	0.018	0.001	0.018	0.985	0.012	0.005
8/5/2012	5	0.013	0.003	0.014	0.001	0.015	0.985	0.012	0.005
8/5/2012	6	0.013	0.003	0.030	0.002	0.020	0.985	0.018	0.006
8/5/2012	7	0.018	0.004	0.016	0.001	0.020	0.985	0.012	0.004
8/5/2012	8	0.021	0.003	0.017	0.003	0.019	0.985	0.021	0.004
8/5/2012	9	0.014	0.005	0.016	0.003	0.014	0.985	0.018	0.005
8/5/2012	10	0.021	0.008	0.027	-0.015	0.016	0.985	0.023	0.004
8/5/2012	11	0.027	0.005	0.017	0.001	0.024	0.985	0.025	0.003
8/5/2012	12	0.017	0.002	0.012	0.000	0.020	0.985	0.022	0.006
8/5/2012	13	0.013	0.002	0.011	-0.001	0.012	0.985	0.010	0.007
8/5/2012	14	0.068	0.001	0.028	-0.001	0.026	0.004	0.012	0.003
8/5/2012	15	0.108	0.002	0.024	-0.004	0.028	0.985	0.012	0.003
8/5/2012	16	0.106	0.005	0.024	-0.005	0.013	0.985	0.020	0.005
8/5/2012	17	0.017	0.002	0.057	0.001	0.035	0.985	0.016	0.001
8/5/2012	18	0.026	0.002	0.024	0.001	0.025	0.985	0.016	0.001
8/5/2012	19	0.020	0.004	0.025	0.000	0.023	0.009	0.030	0.005
8/5/2012	20	0.025	0.004	0.033	-0.003	0.026	0.008	0.027	0.007
8/5/2012	21	0.026	0.003	0.029	-0.006	0.026	0.007	0.028	0.010
8/5/2012	22	0.029	0.004	0.023	-0.001	0.028	0.007	0.025	0.009
8/5/2012	23	0.025	0.006	0.026	0.004	0.027	0.006	0.019	0.007
8/6/2012	0	0.028	0.004	0.050	0.007	0.030	0.007	0.023	0.008
8/6/2012	1	0.029	0.003	0.026	0.006	0.022	0.009	0.023	0.009
8/6/2012	2	0.024	0.006	0.018	-0.001	0.028	0.007	0.023	0.006
8/6/2012	3	0.022	0.005	0.033	0.000	0.026	0.006	0.026	0.007
8/6/2012	4	0.029	0.003	0.021	0.003	0.022	0.007	0.023	0.011
8/6/2012	5	0.027	0.005	0.024	-0.001	0.024	0.009	0.022	0.010
8/6/2012	6	0.024	0.006	0.023	0.000	0.077	0.011	0.018	0.008
8/6/2012	7	0.021	0.008	0.023	0.003	0.076	0.011	0.020	0.007
8/6/2012	8	0.023	0.006	0.020	0.001	0.047	0.985	0.023	0.007
8/6/2012	9	0.019	0.003	0.023	0.001	0.025	0.985	0.019	0.006
8/6/2012	10	0.016	0.002	0.019	0.000	0.024	0.010	0.019	0.007
8/6/2012	11	0.026	0.003	0.027	0.000	0.033	0.985	0.028	0.008
8/6/2012	12	0.027	0.004	0.026	0.000	0.044	0.985	0.026	0.007
8/6/2012	13	0.028	0.003	0.032	-0.002	0.079	0.985	0.032	0.008
8/6/2012	14	0.027	0.003	0.023	0.000	0.030	0.985	0.028	0.006
8/6/2012	15	0.022	0.002	0.015	-0.004	0.031	0.985	0.022	0.006
8/6/2012	16	0.022	-0.002	0.032	-0.004	0.021	0.985	0.030	0.007
8/6/2012	17	0.025	-0.002	0.020	-0.001	0.024	0.985	0.017	0.007
8/6/2012	18	0.023	0.002	0.024	-0.007	0.024	0.985	0.021	0.007
8/6/2012	19	0.023	0.004	0.024	-0.007	0.024	0.985	0.032	0.007
8/6/2012	20	0.025	0.003	0.029	0.003	0.022	0.985	0.027	0.009
8/6/2012	21	0.018	0.003	0.018	0.004	0.019	0.985	0.014	0.008
8/6/2012	22	0.021	0.003	0.018	0.002	0.017	0.985	0.014	0.005
8/6/2012	23	0.018	0.003	0.019	0.003	0.016	0.985	0.013	0.006



DESERT SUNLIGHT SOLAR FARM

TABLE 3 - HOURLY BAM DATA

(Please refer to Table 3 cover page for additional details.)

All values are in units of milligrams per cubic meter.

Date	Hour	North Station		East Station		South Station		West Station	
		PM10	PM2.5	PM10	PM2.5	PM10	PM2.5	PM10	PM2.5
8/7/2012	0	0.017	0.004	0.027	0.002	0.017	0.985	0.018	0.008
8/7/2012	1	0.017	0.006	0.014	0.001	0.016	0.985	0.010	0.005
8/7/2012	2	0.017	0.004	0.017	0.002	0.018	0.985	0.012	0.004
8/7/2012	3	0.013	0.001	0.007	0.002	0.015	0.985	0.014	0.005
8/7/2012	4	0.014	0.002	0.015	0.001	0.012	0.985	0.014	0.005
8/7/2012	5	0.022	0.005	0.027	-0.003	0.020	0.985	0.018	0.008
8/7/2012	6	0.019	0.007	---	---	0.023	0.985	0.015	0.006
8/7/2012	7	0.022	0.006	---	---	0.096	0.985	0.018	0.006
8/7/2012	8	0.018	0.005	0.985	0.985	0.051	0.008	0.017	0.006
8/7/2012	9	0.016	0.004	0.010	-0.003	0.046	0.985	0.017	0.003
8/7/2012	10	0.021	0.001	0.006	-0.004	0.067	0.985	-0.015	0.003
8/7/2012	11	0.017	0.003	0.005	-0.003	0.023	0.985	0.012	0.003
8/7/2012	12	0.025	0.005	0.017	-0.015	0.022	0.985	0.013	0.004
8/7/2012	13	0.038	0.002	0.015	0.002	0.033	0.985	0.021	0.005
8/7/2012	14	0.022	0.000	0.014	0.001	0.053	0.985	0.021	0.004
8/7/2012	15	0.021	0.005	0.015	-0.002	0.053	0.985	0.018	0.003
8/7/2012	16	0.015	0.005	0.014	-0.003	0.026	0.985	0.020	0.001
8/7/2012	17	0.020	0.002	0.020	-0.002	0.023	0.985	0.018	0.003
8/7/2012	18	0.041	0.003	0.016	-0.005	0.051	0.985	0.020	0.005
8/7/2012	19	0.015	0.002	0.017	-0.007	0.021	0.985	0.022	0.006
8/7/2012	20	0.019	0.002	0.021	0.000	0.019	0.985	0.014	0.006
8/7/2012	21	0.015	0.005	---	---	0.020	0.985	0.014	0.007
8/7/2012	22	0.018	0.006	---	---	0.021	0.985	0.013	0.007
8/7/2012	23	0.015	0.007	---	---	0.019	0.985	0.018	0.007
8/8/2012	0	0.017	0.006	---	---	0.020	0.985	0.032	0.006
8/8/2012	1	0.017	0.006	---	---	0.021	0.985	0.018	0.007
8/8/2012	2	0.019	0.003	---	---	0.029	0.985	0.021	0.008
8/8/2012	3	---	---	---	---	---	---	0.019	0.007
8/8/2012	4	---	---	---	---	---	---	0.026	0.007
8/8/2012	5	---	---	---	---	---	---	0.021	0.006
8/8/2012	6	---	---	---	---	---	---	0.022	0.007
8/8/2012	7	---	---	---	---	---	---	0.019	0.009
8/8/2012	8	---	---	0.985	0.985	---	---	0.019	0.007
8/8/2012	9	0.985	0.985	-0.004	-0.002	0.032	0.985	0.027	0.006
8/8/2012	10	0.009	0.000	0.001	-0.004	0.029	0.985	-0.015	-0.015
8/8/2012	11	0.011	-0.001	0.008	-0.005	0.027	0.985	0.025	0.009
8/8/2012	12	0.019	-0.002	0.011	-0.004	0.014	0.985	0.007	0.003
8/8/2012	13	0.014	-0.002	0.010	-0.003	0.024	0.006	0.021	0.002
8/8/2012	14	0.013	-0.001	0.018	-0.007	0.023	0.985	0.015	0.005
8/8/2012	15	0.043	0.004	0.014	-0.006	0.035	0.985	0.016	0.005
8/8/2012	16	0.026	0.005	0.016	0.001	0.029	0.985	0.016	0.006
8/8/2012	17	0.014	0.002	0.015	0.002	0.014	0.985	0.013	0.007
8/8/2012	18	0.014	0.004	0.017	0.003	0.021	0.006	0.012	0.008
8/8/2012	19	0.013	0.004	0.010	0.004	0.014	0.005	0.011	0.005
8/8/2012	20	0.012	0.003	0.012	-0.004	0.014	0.006	0.013	0.002
8/8/2012	21	0.018	0.003	0.014	-0.002	0.017	0.985	0.014	0.005
8/8/2012	22	0.016	0.004	0.020	0.002	0.013	0.985	0.016	0.006
8/8/2012	23	0.015	0.004	0.013	0.001	0.013	0.985	0.010	0.005



DESERT SUNLIGHT SOLAR FARM

TABLE 3 - HOURLY BAM DATA

(Please refer to Table 3 cover page for additional details.)

All values are in units of milligrams per cubic meter.

Date	Hour	North Station		East Station		South Station		West Station	
		PM10	PM2.5	PM10	PM2.5	PM10	PM2.5	PM10	PM2.5
8/9/2012	0	0.015	0.004	0.026	-0.001	0.013	0.985	0.030	0.005
8/9/2012	1	0.017	0.006	0.016	-0.001	0.012	0.985	0.012	0.004
8/9/2012	2	0.017	0.006	0.017	0.004	0.018	0.985	0.012	0.005
8/9/2012	3	0.022	0.004	0.020	0.006	0.020	0.985	0.022	0.006
8/9/2012	4	0.023	0.005	0.024	0.007	0.018	0.985	0.013	0.007
8/9/2012	5	0.023	0.009	0.015	0.006	0.024	0.985	0.027	0.007
8/9/2012	6	0.056	0.009	0.171	0.021	0.248	0.985	0.114	0.020
8/9/2012	7	0.175	0.021	0.291	0.030	0.286	0.985	0.231	0.033
8/9/2012	8	0.218	0.030	0.343	0.044	0.342	0.985	0.082	0.013
8/9/2012	9	0.154	0.019	0.312	0.045	0.322	0.049	0.182	0.031
8/9/2012	10	0.289	0.040	0.263	0.036	0.269	0.043	0.282	0.985
8/9/2012	11	0.142	0.028	0.195	0.024	0.195	0.985	0.207	0.031
8/9/2012	12	0.148	0.022	0.120	0.012	0.139	0.985	0.137	0.021
8/9/2012	13	0.083	0.010	0.088	0.009	0.092	0.985	0.077	0.009
8/9/2012	14	0.093	0.012	0.076	0.007	0.985	0.985	0.086	0.015
8/9/2012	15	0.090	0.011	0.985	0.017	0.985	0.985	0.096	0.018
8/9/2012	16	0.165	0.025	0.177	0.024	0.175	0.032	0.159	0.029
8/9/2012	17	0.153	0.026	0.149	0.023	0.148	0.027	0.150	0.022
8/9/2012	18	0.133	0.024	0.143	0.031	0.138	0.031	0.133	0.025
8/9/2012	19	0.129	0.019	0.118	0.021	0.123	0.019	0.122	0.025
8/9/2012	20	0.115	0.015	0.112	0.024	0.120	0.020	0.124	0.023
8/9/2012	21	0.107	0.019	0.108	0.015	0.098	0.024	0.099	0.016
8/9/2012	22	0.085	0.021	0.076	0.013	0.076	0.022	0.088	0.018
8/9/2012	23	0.073	0.016	0.068	0.013	0.066	0.015	0.078	0.015
8/10/2012	0	0.067	0.013	0.066	0.011	0.067	0.015	0.062	0.015
8/10/2012	1	0.055	0.011	0.073	0.007	0.072	0.017	0.059	0.014
8/10/2012	2	0.059	0.010	0.076	0.009	0.071	0.020	0.064	0.013
8/10/2012	3	0.065	0.012	0.066	0.011	0.072	0.018	0.070	0.012
8/10/2012	4	0.064	0.010	0.068	0.011	0.065	0.016	0.061	0.010
8/10/2012	5	0.064	0.010	0.068	0.001	0.072	0.013	0.065	0.016
8/10/2012	6	0.069	0.015	0.069	0.002	0.084	0.017	0.074	0.016
8/10/2012	7	0.067	0.012	0.065	0.010	0.110	0.018	0.081	0.013
8/10/2012	8	0.071	0.015	0.059	0.010	0.074	0.012	0.061	0.012
8/10/2012	9	0.065	0.012	0.068	0.009	0.064	0.012	0.067	0.013
8/10/2012	10	0.057	0.009	0.047	0.008	0.054	0.012	0.052	0.011
8/10/2012	11	0.048	0.006	0.043	0.007	0.057	0.011	0.044	0.009
8/10/2012	12	0.042	0.985	0.039	0.003	0.042	0.010	0.046	0.009
8/10/2012	13	0.029	0.008	0.027	0.004	0.034	0.008	0.033	0.007
8/10/2012	14	0.033	0.005	0.028	0.007	0.035	0.985	0.033	0.007
8/10/2012	15	0.027	-0.005	0.027	-0.001	0.042	0.985	0.026	0.008
8/10/2012	16	0.030	-0.005	0.026	-0.003	0.033	0.985	0.030	0.007
8/10/2012	17	0.032	0.000	0.021	0.001	0.032	0.985	0.029	0.006
8/10/2012	18	0.024	0.000	0.030	0.000	0.025	0.985	0.019	0.006
8/10/2012	19	0.021	-0.001	0.040	0.001	0.024	0.985	0.027	0.006
8/10/2012	20	0.025	-0.003	0.022	0.001	0.029	0.985	0.026	0.007
8/10/2012	21	0.068	-0.001	0.100	0.016	0.057	0.985	0.038	0.010
8/10/2012	22	0.033	0.005	0.032	0.012	0.035	0.985	0.032	0.012
8/10/2012	23	0.026	0.005	0.026	0.008	0.025	0.985	0.022	0.009



DESERT SUNLIGHT SOLAR FARM

TABLE 3 - HOURLY BAM DATA

(Please refer to Table 3 cover page for additional details.)

All values are in units of milligrams per cubic meter.

Date	Hour	North Station		East Station		South Station		West Station	
		PM10	PM2.5	PM10	PM2.5	PM10	PM2.5	PM10	PM2.5
8/11/2012	0	0.026	0.003	0.036	0.004	0.036	0.985	0.026	0.007
8/11/2012	1	0.032	0.002	0.031	0.004	0.025	0.985	0.025	0.008
8/11/2012	2	0.029	0.002	0.027	0.003	0.026	0.985	0.027	0.008
8/11/2012	3	0.026	0.003	0.026	0.003	0.027	0.985	0.018	0.007
8/11/2012	4	0.027	0.004	0.023	0.005	0.022	0.985	0.026	0.008
8/11/2012	5	0.028	0.004	0.027	0.008	0.022	0.985	0.026	0.006
8/11/2012	6	0.027	0.004	0.028	0.006	0.032	0.985	0.022	0.005
8/11/2012	7	0.985	0.184	---	---	0.985	0.985	0.985	0.126
8/11/2012	8	0.790	0.078	---	---	0.558	0.985	0.889	0.088
8/11/2012	9	0.108	0.015	---	---	0.143	0.985	0.136	0.019
8/11/2012	10	0.122	0.015	0.985	0.985	0.143	0.985	0.106	0.018
8/11/2012	11	0.058	0.001	0.058	0.005	0.055	0.985	0.056	0.008
8/11/2012	12	0.030	0.001	0.028	0.003	0.028	0.985	0.025	0.009
8/11/2012	13	0.016	0.004	0.007	-0.002	0.019	0.985	0.020	0.008
8/11/2012	14	0.007	0.002	0.009	-0.003	0.016	0.985	0.013	0.006
8/11/2012	15	0.008	-0.003	0.010	-0.002	0.009	0.985	0.009	0.004
8/11/2012	16	0.010	-0.004	0.003	-0.002	0.008	0.985	0.007	0.001
8/11/2012	17	0.010	-0.001	-0.003	-0.007	0.008	0.985	0.011	0.000
8/11/2012	18	0.010	0.002	0.000	-0.007	0.011	0.985	0.012	0.003
8/11/2012	19	0.098	0.005	0.060	0.002	0.011	0.985	0.031	0.006
8/11/2012	20	0.019	0.005	0.018	0.004	0.011	0.985	0.014	0.007
8/11/2012	21	0.021	0.003	0.012	0.000	0.015	0.985	0.017	0.004
8/11/2012	22	0.016	0.004	0.013	-0.001	0.014	0.006	0.006	0.004
8/11/2012	23	0.011	-0.001	0.013	0.000	0.013	0.985	0.010	0.006
8/12/2012	0	0.012	-0.002	0.016	0.001	0.011	0.985	0.011	0.006
8/12/2012	1	0.019	0.001	0.013	-0.001	0.016	0.985	0.017	0.006
8/12/2012	2	0.012	0.001	0.017	-0.002	0.020	0.985	0.016	0.006
8/12/2012	3	0.040	0.002	0.037	0.002	0.024	0.985	0.019	0.006
8/12/2012	4	0.027	0.003	0.032	0.004	0.028	0.985	0.019	0.007
8/12/2012	5	0.029	-0.001	0.020	0.004	0.025	0.985	0.022	0.006
8/12/2012	6	0.021	0.001	---	---	0.027	0.985	0.022	0.005
8/12/2012	7	0.021	0.004	---	---	0.023	0.985	0.020	0.005
8/12/2012	8	0.020	0.003	0.985	0.985	0.020	0.985	0.016	0.003
8/12/2012	9	0.017	0.004	0.006	0.002	0.017	0.985	0.016	0.005
8/12/2012	10	0.022	0.003	0.007	-0.001	0.018	0.985	0.030	0.008
8/12/2012	11	0.016	0.003	0.007	-0.015	0.011	0.985	0.011	0.007
8/12/2012	12	0.010	0.002	0.016	0.001	0.015	0.985	0.011	0.006
8/12/2012	13	0.012	-0.002	0.008	-0.001	0.013	0.985	0.013	0.005
8/12/2012	14	0.012	0.001	0.008	-0.002	0.010	0.985	0.011	0.006
8/12/2012	15	0.010	0.002	0.007	-0.002	0.010	0.005	0.011	0.005
8/12/2012	16	0.016	-0.001	0.005	-0.002	0.010	0.006	0.011	0.005
8/12/2012	17	0.025	0.001	0.008	-0.002	0.009	0.007	0.012	0.006
8/12/2012	18	0.060	0.005	0.015	-0.002	0.012	0.007	0.019	0.008
8/12/2012	19	0.017	0.006	0.012	0.004	0.014	0.006	0.013	0.004
8/12/2012	20	0.015	0.003	0.012	0.008	0.012	0.008	0.016	0.004
8/12/2012	21	0.015	0.002	0.013	0.008	0.010	0.007	0.010	0.007
8/12/2012	22	0.021	0.006	0.014	0.006	0.021	0.008	0.023	0.008
8/12/2012	23	0.008	0.005	0.012	0.004	0.008	0.008	0.007	0.007



DESERT SUNLIGHT SOLAR FARM

TABLE 3 - HOURLY BAM DATA

(Please refer to Table 3 cover page for additional details.)

All values are in units of milligrams per cubic meter.

Date	Hour	North Station		East Station		South Station		West Station	
		PM10	PM2.5	PM10	PM2.5	PM10	PM2.5	PM10	PM2.5
8/13/2012	0	0.006	0.000	0.008	0.002	0.010	0.005	0.020	0.003
8/13/2012	1	0.008	0.003	0.005	0.002	0.011	0.003	0.005	0.005
8/13/2012	2	0.012	0.006	0.007	0.004	0.009	0.004	0.009	0.006
8/13/2012	3	0.013	0.001	0.012	0.003	0.007	0.005	0.014	0.004
8/13/2012	4	0.010	-0.002	0.011	0.004	0.009	0.005	0.011	0.007
8/13/2012	5	0.019	0.003	0.007	0.005	0.011	0.006	0.011	0.007
8/13/2012	6	0.014	0.005	0.009	0.001	0.040	0.008	0.018	0.006
8/13/2012	7	0.015	0.004	---	---	0.119	0.010	0.017	0.009
8/13/2012	8	0.020	0.004	---	---	0.082	0.016	0.018	0.008
8/13/2012	9	0.016	0.005	0.985	0.985	0.044	0.006	0.014	0.006
8/13/2012	10	0.025	0.004	0.007	-0.003	0.037	0.008	0.022	0.006
8/13/2012	11	0.012	0.001	0.007	-0.002	0.029	0.009	0.014	0.004
8/13/2012	12	0.010	0.001	0.009	-0.001	0.018	0.005	0.013	0.004
8/13/2012	13	0.016	0.003	0.009	-0.003	0.039	0.006	0.015	0.005
8/13/2012	14	0.021	0.004	0.008	-0.009	0.045	0.985	0.015	0.002
8/13/2012	15	0.015	0.004	0.010	-0.007	0.040	0.985	0.021	0.003
8/13/2012	16	0.253	0.003	0.201	0.000	0.075	0.985	0.085	0.005
8/13/2012	17	0.131	0.002	0.024	0.004	0.032	0.985	0.029	0.007
8/13/2012	18	0.492	0.025	0.818	0.034	0.217	0.985	0.086	0.008
8/13/2012	19	0.018	0.007	0.025	0.007	0.022	0.011	0.023	0.008
8/13/2012	20	0.021	0.006	0.021	0.001	0.985	0.985	0.026	0.010
8/13/2012	21	0.021	0.004	0.021	-0.003	0.985	0.985	0.033	0.012
8/13/2012	22	0.028	0.005	0.024	-0.002	0.985	0.985	0.020	0.011
8/13/2012	23	0.029	0.006	0.025	0.002	0.985	0.985	0.067	0.010
8/14/2012	0	0.041	0.006	0.123	0.010	0.985	0.985	0.038	0.011
8/14/2012	1	0.050	0.007	0.078	0.011	0.985	0.985	0.040	0.007
8/14/2012	2	0.026	0.006	0.038	0.008	0.985	0.985	0.020	0.004
8/14/2012	3	0.026	0.005	0.024	0.009	0.985	0.985	0.021	0.006
8/14/2012	4	0.024	0.006	0.028	0.008	0.985	0.985	0.024	0.006
8/14/2012	5	0.030	0.008	0.026	0.006	0.985	0.985	0.023	0.008
8/14/2012	6	0.021	0.007	0.023	0.007	0.985	0.985	0.016	0.008
8/14/2012	7	0.026	0.010	0.026	0.008	0.985	0.985	0.020	0.006
8/14/2012	8	0.020	0.012	0.027	0.008	0.985	0.985	0.021	0.008
8/14/2012	9	0.027	0.010	0.024	0.007	0.985	0.985	0.023	0.009
8/14/2012	10	0.985	0.985	0.032	0.985	0.985	0.985	0.034	0.007
8/14/2012	11	0.985	0.985	0.033	0.985	0.985	0.985	0.036	0.006
8/14/2012	12	0.036	0.009	0.059	0.985	0.985	0.985	0.040	0.006
8/14/2012	13	0.068	0.009	0.082	0.985	0.985	0.985	0.070	0.010
8/14/2012	14	0.057	0.010	0.053	0.985	0.985	0.985	0.043	0.012
8/14/2012	15	0.030	0.010	0.250	0.985	0.985	0.985	0.017	0.012
8/14/2012	16	0.022	0.007	0.019	0.985	0.985	0.985	0.017	0.010
8/14/2012	17	0.022	0.007	0.020	0.985	0.985	0.985	0.017	0.006
8/14/2012	18	0.020	0.008	0.014	0.008	0.985	0.985	0.031	0.008
8/14/2012	19	0.025	0.010	0.028	0.011	0.021	0.985	0.019	0.013
8/14/2012	20	0.034	0.018	0.032	0.016	0.985	0.985	0.036	0.018
8/14/2012	21	0.037	0.019	0.038	0.021	0.985	0.985	0.037	0.022
8/14/2012	22	0.032	0.010	0.034	0.005	0.985	0.985	0.038	0.009
8/14/2012	23	0.039	0.011	0.050	0.985	0.985	0.985	0.034	0.016



DESERT SUNLIGHT SOLAR FARM

TABLE 3 - HOURLY BAM DATA

(Please refer to Table 3 cover page for additional details.)

All values are in units of milligrams per cubic meter.

Date	Hour	North Station		East Station		South Station		West Station	
		PM10	PM2.5	PM10	PM2.5	PM10	PM2.5	PM10	PM2.5
8/15/2012	0	0.019	0.011	0.027	0.985	0.985	0.985	0.027	0.013
8/15/2012	1	0.029	0.017	0.026	0.985	0.985	0.985	0.023	0.013
8/15/2012	2	0.035	0.017	0.033	0.985	0.985	0.985	0.027	0.017
8/15/2012	3	0.127	0.024	0.073	0.985	0.985	0.985	0.083	0.024
8/15/2012	4	0.857	0.094	0.630	0.985	0.985	0.985	0.781	0.087
8/15/2012	5	0.569	0.048	0.527	0.985	0.985	0.985	0.518	0.052
8/15/2012	6	0.235	0.026	0.299	0.985	0.985	0.985	0.207	0.026
8/15/2012	7	0.218	0.020	0.161	0.985	0.985	0.985	0.145	0.019
8/15/2012	8	0.091	0.014	0.077	0.985	0.985	0.985	0.086	0.013
8/15/2012	9	0.065	0.013	0.064	0.985	0.985	0.985	0.066	0.013
8/15/2012	10	0.101	0.013	0.233	0.985	0.985	0.985	0.102	0.013
8/15/2012	11	0.097	0.013	0.082	0.985	0.985	0.985	0.091	0.017
8/15/2012	12	0.985	0.015	0.004	0.985	0.985	0.985	0.074	0.017
8/15/2012	13	0.068	0.011	0.985	0.985	0.985	0.985	0.056	0.014
8/15/2012	14	0.064	0.011	0.985	0.985	0.985	0.022	0.064	0.014
8/15/2012	15	0.071	0.010	0.985	0.004	0.985	0.985	0.055	0.016
8/15/2012	16	0.078	0.009	0.064	0.007	0.985	0.985	0.053	0.011
8/15/2012	17	0.392	0.024	0.079	0.013	0.072	0.985	0.076	0.019
8/15/2012	18	0.084	0.014	0.057	0.018	0.063	0.985	0.060	0.017
8/15/2012	19	0.091	0.023	0.065	0.019	0.069	0.985	0.073	0.018
8/15/2012	20	0.065	0.012	0.069	0.016	0.060	0.985	0.069	0.020
8/15/2012	21	0.058	0.013	0.063	0.009	0.058	0.985	0.054	0.015
8/15/2012	22	0.082	0.018	---	---	0.058	0.985	0.087	0.027
8/15/2012	23	0.078	0.017	---	---	0.090	0.985	0.077	0.020
8/16/2012	0	0.068	0.010	---	---	0.057	0.985	0.069	0.016
8/16/2012	1	0.040	0.007	---	---	0.028	0.985	0.026	0.004
8/16/2012	2	0.035	0.003	---	---	0.015	0.985	0.025	0.007
8/16/2012	3	0.021	-0.001	---	---	0.015	0.985	0.007	0.009
8/16/2012	4	---	---	---	---	---	---	0.009	0.005
8/16/2012	5	---	---	---	---	---	---	0.012	0.006
8/16/2012	6	---	---	---	---	---	---	0.012	0.007
8/16/2012	7	---	---	---	---	---	---	0.010	0.007
8/16/2012	8	---	---	---	---	---	---	0.016	0.007
8/16/2012	9	---	---	---	---	---	---	0.009	0.009
8/16/2012	10	---	---	---	---	---	---	0.010	0.009
8/16/2012	11	0.985	0.985	0.985	0.985	0.985	0.985	0.008	0.005
8/16/2012	12	0.058	-0.001	-0.001	0.001	0.009	0.985	0.006	0.005
8/16/2012	13	-0.005	-0.005	0.003	-0.003	0.012	0.985	0.008	0.985
8/16/2012	14	0.000	-0.006	0.009	-0.005	0.011	0.985	0.985	0.985
8/16/2012	15	0.007	-0.002	0.006	0.985	0.008	0.985	0.010	0.007
8/16/2012	16	0.021	0.001	0.004	-0.001	0.011	0.985	0.009	0.009
8/16/2012	17	0.015	0.004	0.009	0.006	0.013	0.985	0.010	0.007
8/16/2012	18	0.015	0.006	0.010	0.010	0.012	0.985	0.013	0.005
8/16/2012	19	0.011	0.007	0.009	0.008	0.011	0.985	0.014	0.007
8/16/2012	20	0.011	0.006	0.010	0.007	0.012	0.985	0.009	0.009
8/16/2012	21	0.014	0.004	0.011	0.009	0.011	0.985	0.008	0.007
8/16/2012	22	0.012	0.003	0.009	0.012	0.010	0.985	0.011	0.007
8/16/2012	23	0.011	0.004	0.009	0.010	0.010	0.985	0.011	0.008



DESERT SUNLIGHT SOLAR FARM

TABLE 3 - HOURLY BAM DATA

(Please refer to Table 3 cover page for additional details.)

All values are in units of milligrams per cubic meter.

Date	Hour	North Station		East Station		South Station		West Station	
		PM10	PM2.5	PM10	PM2.5	PM10	PM2.5	PM10	PM2.5
8/17/2012	0	0.013	0.003	0.009	0.009	0.011	0.985	0.024	0.008
8/17/2012	1	0.014	0.004	0.008	0.005	0.011	0.985	0.011	0.008
8/17/2012	2	0.013	0.005	0.009	-0.004	0.016	0.985	0.009	0.985
8/17/2012	3	---	---	0.020	-0.008	0.018	0.985	0.016	0.985
8/17/2012	4	---	---	0.013	-0.002	0.019	0.985	0.018	0.985
8/17/2012	5	---	---	0.007	0.006	0.006	0.985	0.008	0.985
8/17/2012	6	---	---	---	---	0.007	0.985	0.005	0.985
8/17/2012	7	---	---	---	---	0.005	0.985	0.002	0.985
8/17/2012	8	---	---	0.985	0.985	0.005	0.985	0.004	0.985
8/17/2012	9	---	---	-0.015	-0.015	0.006	0.985	0.008	0.985
8/17/2012	10	-0.010	-0.015	-0.004	-0.010	0.003	0.985	0.007	0.985
8/17/2012	11	-0.009	-0.009	0.000	-0.006	0.003	0.985	0.001	0.985
8/17/2012	12	-0.010	-0.010	0.002	-0.004	0.002	0.985	0.007	0.985
8/17/2012	13	-0.008	-0.008	0.003	-0.004	0.002	0.985	0.008	0.985
8/17/2012	14	0.001	-0.006	0.003	-0.003	0.004	0.985	0.002	0.985
8/17/2012	15	0.007	-0.005	0.001	0.002	0.008	0.985	0.005	0.985
8/17/2012	16	0.086	-0.003	0.005	0.002	0.009	0.985	0.008	0.985
8/17/2012	17	0.006	-0.001	0.006	0.000	0.008	0.985	0.008	0.985
8/17/2012	18	0.024	-0.001	0.008	-0.003	0.011	0.985	0.008	0.985
8/17/2012	19	0.006	0.002	0.008	-0.003	0.009	0.985	0.006	0.985
8/17/2012	20	0.008	0.000	0.004	0.000	0.009	0.985	0.005	0.985
8/17/2012	21	0.009	-0.001	0.005	0.003	0.007	0.985	0.008	0.985
8/17/2012	22	0.010	0.002	0.006	0.003	0.008	0.985	0.009	0.985
8/17/2012	23	0.015	0.002	0.008	0.002	0.012	0.985	0.008	0.985
8/18/2012	0	0.006	0.001	0.010	0.005	0.013	0.985	0.985	0.985
8/18/2012	1	0.007	-0.002	0.007	0.001	0.008	0.985	0.985	0.985
8/18/2012	2	0.008	-0.001	0.006	-0.001	0.005	0.985	0.985	0.985
8/18/2012	3	0.007	0.002	0.004	0.004	0.007	0.985	0.985	0.985
8/18/2012	4	0.009	0.003	0.002	0.003	0.008	0.985	0.985	0.985
8/18/2012	5	0.008	0.002	0.004	0.003	0.006	0.985	0.985	0.985
8/18/2012	6	0.007	0.001	0.006	0.002	0.006	0.985	0.985	0.985
8/18/2012	7	0.008	0.001	0.007	-0.001	0.010	0.985	0.985	0.985
8/18/2012	8	0.009	-0.001	0.006	0.001	0.009	0.985	0.985	0.985
8/18/2012	9	0.006	-0.004	0.005	0.003	0.005	0.985	0.985	0.985
8/18/2012	10	0.005	-0.003	0.000	0.000	0.003	0.985	0.985	0.985
8/18/2012	11	0.007	0.000	-0.001	-0.002	0.002	0.985	0.985	0.985
8/18/2012	12	0.006	0.001	0.002	0.000	0.004	0.985	0.985	0.985
8/18/2012	13	0.003	0.000	0.002	0.001	0.006	0.985	0.985	0.985
8/18/2012	14	0.002	-0.001	-0.002	0.002	0.002	0.985	0.985	0.985
8/18/2012	15	0.002	-0.002	-0.002	-0.001	0.001	0.985	0.985	0.985
8/18/2012	16	0.002	-0.003	0.001	-0.002	0.004	0.985	0.985	0.985
8/18/2012	17	0.004	-0.001	-0.002	0.000	0.006	0.985	0.985	0.985
8/18/2012	18	0.006	0.001	0.000	0.000	0.005	0.985	0.985	0.985
8/18/2012	19	0.004	0.002	0.003	0.004	0.006	0.985	0.985	0.985
8/18/2012	20	0.004	0.001	0.004	0.001	0.006	0.985	0.985	0.985
8/18/2012	21	0.007	-0.001	0.003	0.002	0.006	0.985	0.985	0.985
8/18/2012	22	0.010	0.000	0.007	0.004	0.017	0.985	0.985	0.985
8/18/2012	23	0.013	0.001	0.011	0.004	0.012	0.985	0.985	0.985



DESERT SUNLIGHT SOLAR FARM

TABLE 3 - HOURLY BAM DATA

(Please refer to Table 3 cover page for additional details.)

All values are in units of milligrams per cubic meter.

Date	Hour	North Station		East Station		South Station		West Station	
		PM10	PM2.5	PM10	PM2.5	PM10	PM2.5	PM10	PM2.5
8/19/2012	0	0.013	0.003	0.009	0.000	0.012	0.985	0.985	0.985
8/19/2012	1	0.014	0.003	0.011	-0.001	0.011	0.985	0.985	0.985
8/19/2012	2	0.012	0.003	0.013	0.004	0.010	0.985	0.985	0.985
8/19/2012	3	0.009	0.003	0.010	0.002	0.006	0.985	0.985	0.985
8/19/2012	4	0.008	0.002	0.006	0.000	0.004	0.985	0.985	0.985
8/19/2012	5	0.006	0.000	0.005	0.000	0.002	0.985	0.985	0.985
8/19/2012	6	0.007	-0.001	0.007	-0.001	0.003	0.985	0.985	0.985
8/19/2012	7	0.007	0.000	0.005	-0.001	0.005	0.985	0.985	0.985
8/19/2012	8	0.004	-0.003	0.000	-0.002	0.003	0.985	0.985	0.985
8/19/2012	9	0.005	-0.003	0.003	-0.001	0.005	0.985	0.985	0.985
8/19/2012	10	0.010	-0.004	0.006	0.002	0.008	0.985	0.985	0.985
8/19/2012	11	0.009	-0.004	0.004	-0.001	0.008	0.985	0.985	0.985
8/19/2012	12	0.009	-0.002	0.003	-0.004	0.010	0.985	0.985	0.985
8/19/2012	13	0.013	0.000	0.001	-0.003	0.009	0.985	0.985	0.985
8/19/2012	14	0.011	0.000	0.002	-0.001	0.006	0.985	0.985	0.985
8/19/2012	15	0.008	-0.002	0.006	-0.001	0.006	0.985	0.985	0.985
8/19/2012	16	0.009	-0.003	0.006	0.000	0.005	0.985	0.985	0.985
8/19/2012	17	0.006	-0.001	0.002	-0.001	0.006	0.985	0.985	0.985
8/19/2012	18	0.006	0.001	-0.001	-0.002	0.001	0.985	0.985	0.985
8/19/2012	19	0.006	0.000	-0.002	-0.004	0.000	0.985	0.985	0.985
8/19/2012	20	0.003	-0.001	0.001	-0.002	0.004	0.985	0.985	0.985
8/19/2012	21	0.002	-0.001	0.006	0.000	0.005	0.985	0.985	0.985
8/19/2012	22	0.002	0.005	0.006	-0.003	0.004	0.985	0.985	0.985
8/19/2012	23	0.005	0.006	0.004	-0.003	0.005	0.985	0.985	0.985
8/20/2012	0	0.008	0.001	0.006	-0.004	0.007	0.985	0.985	0.985
8/20/2012	1	0.008	-0.002	0.007	-0.004	0.006	0.985	0.985	0.985
8/20/2012	2	0.006	0.000	0.004	0.000	0.006	0.985	0.985	0.985
8/20/2012	3	0.005	0.000	0.003	0.001	0.006	0.985	0.985	0.985
8/20/2012	4	0.008	-0.002	0.002	-0.001	0.005	0.985	0.985	0.985
8/20/2012	5	0.006	-0.001	0.003	-0.001	0.003	0.985	0.985	0.985
8/20/2012	6	0.007	-0.002	0.006	-0.002	0.043	0.985	0.985	0.985
8/20/2012	7	0.010	-0.001	0.028	-0.001	0.018	0.985	0.985	0.985
8/20/2012	8	0.010	-0.001	0.007	0.002	0.010	0.985	0.985	0.985
8/20/2012	9	0.010	0.000	0.006	0.000	0.028	0.985	0.985	0.985
8/20/2012	10	0.007	0.001	0.006	0.000	0.011	0.985	0.985	0.985
8/20/2012	11	0.008	0.003	0.005	-0.002	0.013	0.985	0.985	0.005
8/20/2012	12	0.007	0.002	0.002	-0.003	0.013	0.985	0.985	0.001
8/20/2012	13	0.005	-0.001	-0.002	0.001	0.016	0.985	0.985	0.000
8/20/2012	14	0.005	-0.003	-0.001	0.000	0.011	0.985	0.985	0.000
8/20/2012	15	0.007	-0.002	0.003	-0.002	0.015	0.985	0.985	-0.002
8/20/2012	16	0.010	-0.002	0.004	0.000	0.005	0.985	0.985	0.000
8/20/2012	17	0.007	-0.002	0.002	-0.001	0.004	0.985	0.985	0.004
8/20/2012	18	0.007	0.000	0.002	-0.002	0.009	0.985	0.985	0.002
8/20/2012	19	0.008	0.001	0.007	0.001	0.013	0.985	0.985	0.002
8/20/2012	20	0.012	0.002	0.016	-0.002	0.014	0.985	0.985	0.006
8/20/2012	21	0.026	0.003	0.014	-0.002	0.017	0.985	0.985	0.006
8/20/2012	22	0.019	0.003	0.013	0.001	0.018	0.985	0.985	0.004
8/20/2012	23	0.025	0.003	0.023	0.002	0.023	0.985	0.985	0.004



DESERT SUNLIGHT SOLAR FARM

TABLE 3 - HOURLY BAM DATA

(Please refer to Table 3 cover page for additional details.)

All values are in units of milligrams per cubic meter.

Date	Hour	North Station		East Station		South Station		West Station	
		PM10	PM2.5	PM10	PM2.5	PM10	PM2.5	PM10	PM2.5
8/21/2012	0	0.016	0.003	0.012	-0.002	0.015	0.985	0.985	0.004
8/21/2012	1	0.013	0.004	0.011	0.001	0.012	0.985	0.985	0.007
8/21/2012	2	0.012	0.002	0.007	0.003	0.006	0.985	0.985	0.006
8/21/2012	3	0.007	-0.001	0.004	0.002	0.004	0.985	0.985	-0.001
8/21/2012	4	0.003	-0.002	0.004	0.001	0.005	0.985	0.985	-0.002
8/21/2012	5	0.002	-0.004	0.004	-0.001	0.005	0.985	0.985	0.001
8/21/2012	6	0.002	-0.001	0.003	0.001	0.006	0.985	0.985	0.003
8/21/2012	7	0.006	-0.001	0.007	0.000	0.007	0.985	0.985	0.002
8/21/2012	8	0.008	-0.002	0.009	0.000	0.009	0.985	0.985	0.002
8/21/2012	9	0.007	-0.002	0.008	0.000	0.010	0.985	0.985	0.002
8/21/2012	10	0.007	-0.002	0.008	-0.002	0.010	0.985	0.985	-0.015
8/21/2012	11	0.017	0.985	0.007	-0.002	0.008	0.985	0.010	0.005
8/21/2012	12	0.013	-0.015	0.004	-0.002	0.011	0.985	0.012	0.002
8/21/2012	13	0.007	-0.015	0.005	-0.002	0.019	0.985	0.011	-0.001
8/21/2012	14	0.021	-0.015	0.009	-0.003	0.019	0.985	0.008	0.001
8/21/2012	15	0.020	-0.015	0.019	-0.003	0.019	0.985	0.008	0.002
8/21/2012	16	0.019	-0.002	0.014	-0.001	0.042	0.985	0.020	0.003
8/21/2012	17	0.022	-0.001	0.017	-0.002	0.020	0.985	0.024	0.008
8/21/2012	18	0.025	0.003	0.018	0.000	0.024	0.985	0.033	0.010
8/21/2012	19	0.024	0.007	0.026	0.004	0.021	0.985	0.026	0.008
8/21/2012	20	0.029	0.008	0.028	0.005	0.031	0.985	0.024	0.007
8/21/2012	21	0.033	0.008	0.034	0.004	0.032	0.985	0.039	0.008
8/21/2012	22	0.034	0.008	0.026	0.005	0.027	0.985	0.034	0.009
8/21/2012	23	0.028	0.006	0.017	0.004	0.025	0.985	0.023	0.009
8/22/2012	0	0.022	0.002	0.019	0.000	0.015	0.985	0.014	0.007
8/22/2012	1	0.018	0.000	0.007	-0.001	0.013	0.985	0.020	0.004
8/22/2012	2	0.011	0.002	0.009	0.001	0.011	0.985	0.010	0.003
8/22/2012	3	0.111	0.006	0.041	0.001	0.021	0.985	0.017	0.005
8/22/2012	4	0.045	0.009	0.018	0.000	0.028	0.985	0.039	0.006
8/22/2012	5	0.040	0.007	0.031	0.002	0.030	0.985	0.036	0.006
8/22/2012	6	0.025	0.005	0.020	0.004	0.022	0.985	0.026	0.007
8/22/2012	7	0.031	0.003	0.049	0.004	0.053	0.985	0.077	0.007
8/22/2012	8	0.029	0.003	0.018	0.002	0.052	0.985	0.144	0.011
8/22/2012	9	0.117	0.008	0.080	0.000	0.078	0.985	0.129	0.015
8/22/2012	10	0.044	0.010	0.034	-0.001	0.036	0.985	0.059	0.009
8/22/2012	11	0.027	0.003	0.022	0.002	0.024	0.985	0.038	0.004
8/22/2012	12	0.020	0.000	0.014	0.004	0.028	0.985	0.030	0.003
8/22/2012	13	0.069	0.000	0.019	-0.001	0.023	0.985	0.023	0.001
8/22/2012	14	0.026	0.000	0.017	0.000	0.013	0.985	0.018	0.000
8/22/2012	15	0.018	0.001	0.019	0.003	0.026	0.985	0.017	0.001
8/22/2012	16	0.077	0.003	0.038	0.005	0.038	0.985	0.063	0.006
8/22/2012	17	0.028	0.004	0.083	0.009	0.060	0.985	0.028	0.010
8/22/2012	18	0.017	0.003	0.009	0.005	0.017	0.985	0.017	0.007
8/22/2012	19	0.018	0.003	0.009	0.000	0.016	0.985	0.012	0.005
8/22/2012	20	0.008	0.003	---	---	0.010	0.985	0.013	0.008
8/22/2012	21	---	---	---	---	0.006	0.985	0.010	0.009
8/22/2012	22	---	---	---	---	0.004	0.985	0.006	0.006
8/22/2012	23	---	---	---	---	0.002	0.985	0.008	0.005



DESERT SUNLIGHT SOLAR FARM

TABLE 3 - HOURLY BAM DATA

(Please refer to Table 3 cover page for additional details.)

All values are in units of milligrams per cubic meter.

Date	Hour	North Station		East Station		South Station		West Station	
		PM10	PM2.5	PM10	PM2.5	PM10	PM2.5	PM10	PM2.5
8/23/2012	0	---	---	---	---	0.001	0.985	0.008	0.004
8/23/2012	1	---	---	---	---	0.003	0.985	0.005	0.004
8/23/2012	2	---	---	---	---	0.004	0.985	0.007	0.003
8/23/2012	3	---	---	---	---	0.004	0.985	0.007	0.001
8/23/2012	4	---	---	---	---	0.003	0.985	0.006	0.000
8/23/2012	5	---	---	---	---	---	---	0.003	0.001
8/23/2012	6	---	---	---	---	---	---	0.004	0.003
8/23/2012	7	---	---	---	---	---	---	0.007	0.003
8/23/2012	8	---	---	---	---	---	---	0.005	0.004
8/23/2012	9	0.985	0.985	0.985	0.985	0.985	0.985	0.006	0.004
8/23/2012	10	-0.015	-0.015	-0.015	-0.015	0.004	0.985	0.006	0.003
8/23/2012	11	-0.015	-0.011	-0.009	-0.010	0.003	0.985	0.005	-0.001
8/23/2012	12	0.001	-0.010	-0.007	-0.006	0.003	0.985	0.007	0.000
8/23/2012	13	0.004	-0.009	-0.003	-0.003	0.006	0.985	0.010	0.004
8/23/2012	14	0.010	-0.003	0.005	-0.002	0.023	0.985	0.009	-0.015
8/23/2012	15	0.017	0.003	0.009	-0.001	0.017	0.985	0.018	0.009
8/23/2012	16	0.012	0.003	0.007	-0.002	0.010	0.985	0.016	0.007
8/23/2012	17	0.007	0.004	0.007	-0.001	0.008	0.985	0.008	0.004
8/23/2012	18	0.002	0.004	0.007	0.002	0.023	0.985	0.016	0.004
8/23/2012	19	0.005	0.003	0.007	0.003	0.002	0.985	0.011	0.006
8/23/2012	20	0.010	0.003	0.009	0.000	0.008	0.985	0.009	0.007
8/23/2012	21	0.012	0.004	0.028	-0.001	0.013	0.985	0.009	0.009
8/23/2012	22	0.007	0.003	0.005	0.000	0.011	0.985	0.010	0.008
8/23/2012	23	0.007	-0.001	0.005	-0.004	0.011	0.985	0.010	0.005
8/24/2012	0	0.007	-0.001	0.004	-0.007	0.011	0.985	0.010	0.003
8/24/2012	1	0.006	-0.001	0.006	-0.004	0.006	0.985	0.006	0.000
8/24/2012	2	0.009	0.000	0.009	0.000	0.008	0.985	0.003	0.003
8/24/2012	3	0.010	0.001	0.007	0.003	0.008	0.985	0.004	0.004
8/24/2012	4	0.010	-0.002	0.008	0.003	0.007	0.985	0.009	0.003
8/24/2012	5	0.012	-0.001	0.012	-0.001	0.016	0.985	0.011	0.003
8/24/2012	6	0.011	0.003	0.013	0.000	0.016	0.985	0.011	0.002
8/24/2012	7	0.012	0.002	0.018	-0.002	0.043	0.985	0.014	0.005
8/24/2012	8	0.015	0.002	0.014	-0.003	0.027	0.985	0.019	0.006
8/24/2012	9	0.013	0.003	0.014	-0.002	0.985	0.985	0.026	0.007
8/24/2012	10	0.019	0.002	0.022	-0.001	0.019	0.985	0.020	0.006
8/24/2012	11	0.023	0.001	0.013	-0.002	0.023	0.985	0.020	0.006
8/24/2012	12	0.021	0.001	0.017	-0.002	0.019	0.985	0.026	0.007
8/24/2012	13	0.030	0.002	0.018	0.001	0.019	0.985	0.020	0.007
8/24/2012	14	0.052	-0.001	0.018	0.003	0.017	0.985	0.020	0.005
8/24/2012	15	0.020	-0.003	0.013	0.003	0.009	0.985	0.016	0.005
8/24/2012	16	0.015	-0.003	0.012	0.001	0.010	0.985	0.012	0.008
8/24/2012	17	0.011	-0.002	0.013	0.003	0.009	0.985	0.013	0.006
8/24/2012	18	0.015	0.002	0.014	0.003	0.011	0.985	0.013	0.006
8/24/2012	19	0.014	0.004	0.013	0.002	0.014	0.985	0.015	0.006
8/24/2012	20	0.013	0.004	0.012	0.003	0.013	0.985	0.014	0.004
8/24/2012	21	0.016	0.002	0.017	0.003	0.017	0.985	0.017	0.005
8/24/2012	22	0.019	0.003	0.020	0.006	0.016	0.985	0.020	0.009
8/24/2012	23	0.023	0.007	0.017	0.005	0.023	0.985	0.027	0.013



DESERT SUNLIGHT SOLAR FARM

TABLE 3 - HOURLY BAM DATA

(Please refer to Table 3 cover page for additional details.)

All values are in units of milligrams per cubic meter.

Date	Hour	North Station		East Station		South Station		West Station	
		PM10	PM2.5	PM10	PM2.5	PM10	PM2.5	PM10	PM2.5
8/25/2012	0	0.023	0.008	0.024	0.003	0.024	0.985	0.025	0.013
8/25/2012	1	0.023	0.006	0.017	0.001	0.021	0.985	0.020	0.010
8/25/2012	2	0.013	0.002	0.012	-0.001	0.022	0.985	0.012	0.007
8/25/2012	3	0.012	0.000	0.012	0.001	0.013	0.985	0.018	0.006
8/25/2012	4	0.016	0.003	0.015	0.002	0.013	0.985	0.015	0.005
8/25/2012	5	0.014	0.005	0.015	0.002	0.014	0.985	0.014	0.001
8/25/2012	6	0.018	0.002	0.018	0.002	0.012	0.985	0.013	0.000
8/25/2012	7	0.016	0.001	0.014	0.001	0.011	0.985	0.012	0.002
8/25/2012	8	0.016	0.003	0.014	0.000	0.015	0.985	0.011	0.003
8/25/2012	9	0.018	0.003	0.013	-0.001	0.010	0.985	0.011	0.002
8/25/2012	10	0.015	0.001	0.008	-0.004	0.008	0.985	0.010	0.001
8/25/2012	11	0.008	0.001	0.005	-0.003	0.008	0.985	0.016	0.002
8/25/2012	12	0.009	0.002	0.008	0.000	0.016	0.985	0.015	0.002
8/25/2012	13	0.011	0.001	0.011	0.001	0.011	0.985	0.010	0.003
8/25/2012	14	0.016	-0.003	0.014	0.002	0.010	0.985	0.008	0.005
8/25/2012	15	0.012	-0.003	0.010	0.001	0.003	0.985	0.006	0.001
8/25/2012	16	0.013	-0.002	0.003	0.001	-0.001	0.985	0.002	-0.002
8/25/2012	17	0.011	-0.004	0.001	0.000	0.002	0.985	0.000	0.003
8/25/2012	18	0.007	-0.001	0.002	-0.003	0.003	0.985	0.001	0.002
8/25/2012	19	0.006	0.001	0.004	-0.004	0.006	0.985	0.006	0.000
8/25/2012	20	0.006	-0.001	0.009	-0.002	0.007	0.985	0.010	0.001
8/25/2012	21	0.008	-0.004	0.011	0.000	0.008	0.985	0.009	0.002
8/25/2012	22	0.011	-0.002	0.010	-0.001	0.011	0.985	0.017	0.003
8/25/2012	23	0.040	0.004	0.033	0.002	0.049	0.985	0.054	0.004
8/26/2012	0	0.078	0.009	0.044	0.005	0.058	0.985	0.091	0.006
8/26/2012	1	0.066	0.009	0.047	0.006	0.046	0.985	0.079	0.010
8/26/2012	2	0.060	0.007	0.042	0.004	0.046	0.985	0.061	0.009
8/26/2012	3	0.048	0.005	0.046	0.001	0.047	0.985	0.048	0.008
8/26/2012	4	0.044	0.007	0.043	0.006	0.042	0.985	0.047	0.009
8/26/2012	5	0.035	0.008	0.032	0.006	0.031	0.985	0.034	0.010
8/26/2012	6	0.042	0.008	0.035	0.003	0.028	0.985	0.033	0.008
8/26/2012	7	0.041	0.006	0.036	0.005	0.039	0.985	0.041	0.005
8/26/2012	8	0.031	0.002	0.043	0.001	0.027	0.985	0.034	0.004
8/26/2012	9	0.033	0.004	0.031	-0.002	0.032	0.985	0.039	0.003
8/26/2012	10	0.026	0.006	0.019	0.000	0.019	0.985	0.026	0.005
8/26/2012	11	0.022	0.004	0.023	0.003	0.023	0.985	0.048	0.004
8/26/2012	12	0.023	0.000	0.019	0.003	0.015	0.985	0.015	0.005
8/26/2012	13	0.021	-0.002	0.013	0.001	0.021	0.985	0.014	0.007
8/26/2012	14	0.061	0.000	0.011	0.000	0.019	0.985	0.013	0.005
8/26/2012	15	0.132	0.003	0.008	-0.002	0.007	0.985	0.010	0.003
8/26/2012	16	0.019	0.002	0.006	-0.003	0.006	0.985	0.009	0.003
8/26/2012	17	0.003	0.001	0.004	-0.001	0.006	0.985	0.008	0.006
8/26/2012	18	0.003	0.001	0.000	-0.003	0.004	0.985	0.004	0.002
8/26/2012	19	0.000	0.000	-0.003	-0.006	0.000	0.985	0.002	0.000
8/26/2012	20	0.001	-0.004	-0.002	-0.004	0.001	0.985	0.001	-0.001
8/26/2012	21	0.003	-0.004	0.002	-0.001	0.003	0.985	0.003	0.002
8/26/2012	22	0.003	0.001	0.003	-0.001	0.002	0.985	0.004	0.005
8/26/2012	23	0.003	0.002	0.002	0.000	0.000	0.985	0.005	0.002



DESERT SUNLIGHT SOLAR FARM

TABLE 3 - HOURLY BAM DATA

(Please refer to Table 3 cover page for additional details.)

All values are in units of milligrams per cubic meter.

Date	Hour	North Station		East Station		South Station		West Station	
		PM10	PM2.5	PM10	PM2.5	PM10	PM2.5	PM10	PM2.5
8/27/2012	0	0.004	0.002	0.020	0.001	0.023	0.985	0.006	0.000
8/27/2012	1	0.008	-0.002	0.006	0.001	0.008	0.985	0.004	-0.001
8/27/2012	2	0.006	-0.004	0.009	0.001	0.007	0.985	0.002	-0.002
8/27/2012	3	0.004	-0.001	0.009	0.001	0.006	0.985	0.004	-0.001
8/27/2012	4	0.007	0.001	0.006	0.000	0.005	0.985	0.006	0.001
8/27/2012	5	0.010	0.005	0.007	-0.001	0.006	0.985	0.005	0.004
8/27/2012	6	0.014	0.002	0.009	0.000	0.032	0.985	0.005	0.005
8/27/2012	7	0.015	-0.001	0.011	0.005	0.046	0.985	0.006	0.003
8/27/2012	8	0.005	0.000	0.011	0.004	0.059	0.985	0.008	0.002
8/27/2012	9	0.016	-0.001	0.010	0.002	0.028	0.985	0.006	0.005
8/27/2012	10	0.013	0.002	0.010	0.001	0.021	0.985	0.985	0.004
8/27/2012	11	0.021	0.001	0.009	-0.001	0.028	0.985	0.011	0.002
8/27/2012	12	0.011	-0.002	0.006	-0.003	0.015	0.985	0.007	0.002
8/27/2012	13	0.009	-0.003	0.003	0.001	0.018	0.985	0.006	0.002
8/27/2012	14	0.010	-0.003	0.007	0.003	0.027	0.985	0.006	0.004
8/27/2012	15	0.013	-0.002	0.008	0.001	0.041	0.985	0.007	0.005
8/27/2012	16	0.012	-0.001	0.006	-0.002	0.017	0.985	0.010	0.005
8/27/2012	17	0.012	-0.002	0.006	-0.003	0.006	0.985	0.008	0.000
8/27/2012	18	0.011	-0.006	0.006	-0.001	0.017	0.985	0.010	-0.001
8/27/2012	19	0.010	-0.003	0.009	-0.001	0.015	0.985	0.013	0.003
8/27/2012	20	0.012	0.001	0.008	-0.001	0.013	0.985	0.011	0.003
8/27/2012	21	0.010	0.001	0.006	-0.001	0.009	0.985	0.005	0.002
8/27/2012	22	0.005	0.000	0.004	0.001	0.005	0.985	0.001	0.002
8/27/2012	23	0.006	0.001	0.003	0.000	0.007	0.985	0.003	0.001
8/28/2012	0	0.007	0.002	0.017	-0.002	0.010	0.985	0.002	0.001
8/28/2012	1	0.005	-0.001	0.005	-0.001	0.013	0.985	0.004	0.001
8/28/2012	2	0.007	-0.001	0.009	-0.003	0.010	0.985	0.009	-0.001
8/28/2012	3	0.006	0.000	0.010	-0.003	0.008	0.985	0.009	0.000
8/28/2012	4	0.009	0.001	0.007	-0.001	0.010	0.985	0.008	0.001
8/28/2012	5	0.012	0.003	0.008	-0.001	0.011	0.985	0.009	0.003
8/28/2012	6	0.011	0.004	0.008	0.001	0.043	0.985	0.008	0.005
8/28/2012	7	0.013	0.002	0.008	-0.001	0.092	0.985	0.008	0.005
8/28/2012	8	0.014	-0.001	0.007	-0.002	0.036	0.985	0.009	0.006
8/28/2012	9	0.013	0.000	0.010	0.003	0.039	0.985	0.011	0.006
8/28/2012	10	0.012	-0.004	0.010	0.001	0.028	0.985	0.011	0.004
8/28/2012	11	0.013	-0.004	0.005	0.001	0.012	0.985	0.009	0.002
8/28/2012	12	0.009	0.000	---	---	0.010	0.985	0.007	0.001
8/28/2012	13	0.006	0.000	0.985	0.985	0.006	0.985	0.021	0.003
8/28/2012	14	0.005	0.000	-0.015	-0.007	0.006	0.985	0.005	0.001
8/28/2012	15	0.004	0.001	-0.006	-0.003	0.006	0.985	0.006	-0.003
8/28/2012	16	0.007	0.000	0.004	-0.002	0.005	0.985	0.008	-0.002
8/28/2012	17	0.007	-0.001	0.006	-0.002	0.006	0.985	0.007	-0.001
8/28/2012	18	0.008	-0.004	0.007	-0.002	0.011	0.985	0.007	0.001
8/28/2012	19	0.010	-0.001	---	---	0.011	0.985	0.006	0.001
8/28/2012	20	---	---	---	---	0.009	0.985	0.006	0.002
8/28/2012	21	---	---	---	---	0.008	0.985	0.006	0.002
8/28/2012	22	---	---	---	---	0.009	0.985	0.006	0.003
8/28/2012	23	---	---	---	---	0.009	0.985	0.006	0.004



DESERT SUNLIGHT SOLAR FARM

TABLE 3 - HOURLY BAM DATA

(Please refer to Table 3 cover page for additional details.)

All values are in units of milligrams per cubic meter.

Date	Hour	North Station		East Station		South Station		West Station	
		PM10	PM2.5	PM10	PM2.5	PM10	PM2.5	PM10	PM2.5
8/29/2012	0	---	---	---	---	0.011	0.985	0.009	0.003
8/29/2012	1	---	---	---	---	0.013	0.985	0.021	0.002
8/29/2012	2	---	---	---	---	0.010	0.985	0.007	0.002
8/29/2012	3	---	---	---	---	0.009	0.985	0.006	0.001
8/29/2012	4	---	---	---	---	0.008	0.985	0.009	0.001
8/29/2012	5	---	---	---	---	0.009	0.985	0.010	0.000
8/29/2012	6	---	---	---	---	---	---	---	---
8/29/2012	7	---	---	---	---	---	---	---	---
8/29/2012	8	---	---	---	---	0.985	0.985	---	---
8/29/2012	9	0.985	0.985	0.985	0.985	0.013	0.985	0.985	0.985
8/29/2012	10	-0.003	-0.003	-0.005	-0.007	0.011	0.985	0.006	-0.004
8/29/2012	11	-0.002	0.985	-0.004	-0.004	0.007	0.985	0.007	-0.004
8/29/2012	12	0.002	-0.015	-0.001	-0.003	0.006	0.985	0.008	0.000
8/29/2012	13	0.009	-0.006	0.001	-0.002	0.011	0.985	0.011	0.002
8/29/2012	14	0.011	-0.015	0.005	0.000	0.018	0.985	0.017	0.003
8/29/2012	15	0.024	-0.015	0.098	0.002	0.025	0.985	0.011	0.005
8/29/2012	16	0.180	0.003	0.021	0.007	0.010	0.985	0.012	0.006
8/29/2012	17	0.019	0.005	0.020	0.006	0.012	0.985	0.019	0.006
8/29/2012	18	0.015	0.004	0.019	0.006	0.014	0.985	0.036	0.021
8/29/2012	19	0.027	0.004	0.027	0.008	0.038	0.985	0.032	0.012
8/29/2012	20	0.305	0.006	0.029	0.006	0.025	0.985	0.030	0.011
8/29/2012	21	0.027	0.005	0.008	0.005	0.015	0.985	0.015	0.008
8/29/2012	22	0.050	0.003	0.063	0.004	0.055	0.985	0.049	0.007
8/29/2012	23	0.032	0.004	0.161	0.007	0.094	0.985	0.045	0.007
8/30/2012	0	0.208	0.009	0.211	0.018	0.241	0.985	0.207	0.008
8/30/2012	1	0.041	0.009	0.052	0.005	0.057	0.985	0.009	0.008
8/30/2012	2	0.033	0.003	0.007	0.003	0.006	0.985	0.035	0.008
8/30/2012	3	0.015	0.000	0.009	0.002	0.008	0.985	0.029	0.010
8/30/2012	4	0.023	0.002	0.012	0.002	0.017	0.985	0.017	0.008
8/30/2012	5	0.022	0.005	0.011	0.004	0.016	0.985	0.014	0.007
8/30/2012	6	0.023	0.005	0.017	0.004	0.011	0.985	0.018	0.004
8/30/2012	7	0.017	0.005	0.012	0.006	0.020	0.985	0.023	0.004
8/30/2012	8	0.017	0.003	0.009	0.005	0.025	0.985	0.015	0.006
8/30/2012	9	0.006	0.004	0.006	0.002	0.009	0.985	0.014	0.004
8/30/2012	10	0.007	0.004	0.008	0.002	0.010	0.985	0.018	0.004
8/30/2012	11	0.011	-0.001	0.018	0.003	0.010	0.985	0.015	0.006
8/30/2012	12	0.018	-0.003	0.006	0.004	0.028	0.985	0.012	0.007
8/30/2012	13	0.010	0.002	0.007	0.002	0.004	0.985	0.017	0.006
8/30/2012	14	0.010	0.005	0.016	0.000	0.009	0.985	0.016	0.006
8/30/2012	15	0.011	0.004	0.009	0.001	0.014	0.985	0.012	0.007
8/30/2012	16	0.011	0.001	0.020	0.002	0.019	0.985	0.013	0.006
8/30/2012	17	0.016	0.001	0.026	0.002	0.026	0.985	0.021	0.006
8/30/2012	18	0.019	0.001	0.027	0.000	0.029	0.985	0.016	0.007
8/30/2012	19	0.016	0.001	0.023	0.001	0.030	0.985	0.028	0.008
8/30/2012	20	0.025	0.004	0.029	0.006	0.025	0.985	0.022	0.008
8/30/2012	21	0.031	0.006	0.038	0.006	0.036	0.985	0.039	0.008
8/30/2012	22	0.036	0.006	0.033	0.008	0.035	0.985	0.033	0.011
8/30/2012	23	0.035	0.006	0.028	0.006	0.034	0.985	0.029	0.011



DESERT SUNLIGHT SOLAR FARM

TABLE 3 - HOURLY BAM DATA

(Please refer to Table 3 cover page for additional details.)

All values are in units of milligrams per cubic meter.

Date	Hour	North Station		East Station		South Station		West Station	
		PM10	PM2.5	PM10	PM2.5	PM10	PM2.5	PM10	PM2.5
8/31/2012	0	0.022	0.005	0.019	0.004	0.018	0.985	0.025	0.010
8/31/2012	1	0.020	0.003	0.019	0.005	0.017	0.985	0.023	0.010
8/31/2012	2	0.019	0.003	0.013	0.004	0.015	0.985	0.012	0.007
8/31/2012	3	0.012	0.001	0.010	0.002	0.010	0.985	0.012	0.007
8/31/2012	4	0.012	-0.001	0.008	0.005	0.019	0.985	0.014	0.004
8/31/2012	5	0.016	0.003	0.011	0.006	0.011	0.985	0.014	0.004
8/31/2012	6	0.021	0.004	0.013	0.007	0.020	0.985	0.023	0.008
8/31/2012	7	0.022	0.003	0.015	0.006	0.015	0.985	0.022	0.007
8/31/2012	8	0.020	0.003	0.026	0.005	0.021	0.985	0.022	0.004
8/31/2012	9	0.027	0.000	0.029	0.004	0.024	0.985	-0.015	0.985
8/31/2012	10	0.019	0.000	0.016	0.002	0.017	0.985	0.985	0.007
8/31/2012	11	0.017	0.000	0.018	0.003	0.017	0.985	0.027	0.009
8/31/2012	12	0.032	0.002	0.016	0.005	0.027	0.985	0.034	0.010
8/31/2012	13	0.036	0.006	0.028	0.005	0.035	0.985	0.039	0.012
8/31/2012	14	0.106	0.007	0.025	0.005	0.033	0.985	0.033	0.008
8/31/2012	15	0.036	0.006	0.028	0.004	0.030	0.985	0.033	0.007
8/31/2012	16	0.030	0.007	0.032	0.004	0.035	0.985	0.038	0.007
8/31/2012	17	0.029	0.006	0.025	0.001	0.021	0.985	0.024	0.008
8/31/2012	18	0.016	0.003	0.008	-0.002	0.010	0.985	0.014	0.007
8/31/2012	19	0.029	0.002	0.017	0.001	0.017	0.985	0.017	0.006
8/31/2012	20	0.029	0.005	0.030	0.009	0.030	0.985	0.035	0.008
8/31/2012	21	0.037	0.006	0.034	0.009	0.032	0.985	0.034	0.010
8/31/2012	22	0.033	0.007	0.029	0.008	0.032	0.985	0.032	0.008
8/31/2012	23	0.031	0.008	0.027	0.009	0.029	0.985	0.035	0.007



Table 4

Monitored Constituents

The table below shows the sample dates. Table 4 is on the following page.

Station	Week	Sample Date	Sample ID	Work Order	Duration
North	Week 1	8/1/2012	QFF 12-108	1222158	21.15
	Week 2	8/7/2012	QFF 12-112	1222385	18
	Week 3	8/15/2012	QFF 12-114	1223423	16.41
	Week 4	8/22/2012	QFF 12-119	1224537	11.45
	Week 5	8/28/2012	QFF 12-124	1224543	10.83
East	Week 1	8/1/2012	QFF 12-106	1222154	14.3
	Week 2	8/7/2012	QFF 12-110	1222383	12.45
	Week 3	8/15/2012	QFF 12-115	1223424	11
	Week 4	8/22/2012	QFF 12-118	1224536	11
	Week 5	8/28/2012	QFF 12-122	1224541	8.15
West	Week 1	8/1/2012	QFF 12-107	1222157	24
	Week 2	8/7/2012	QFF 12-111	1222384	24
	Week 3	8/15/2012	QFF 12-113	1223418	24
	Week 4	8/22/2012	QFF 12-120	1224539	24
	Week 5	8/28/2012	QFF 12-123	1224542	22
South	Week 1	8/1/2012	QFF 12-097	1222153	20.3
	Week 2	8/7/2012	QFF 12-109	1222382	18
	Week 3	8/15/2012	QFF 12-116	1223422	17.34
	Week 4	8/22/2012	QFF 12-117	1224535	20.5
	Week 5	8/28/2012	QFF 12-121	1224540	21.15



Table 4: Monitored Constituents See Footnotes

Analyte	Week	North Station	East Station	West Station	South Station
Elemental Carbon	Week 1	0.18	0.14	0.22	0.4
	Week 2	0.29	0.36	0.49	0.4
	Week 3	1	0.2	0.59	0.31
	Week 4	0.12	0.12	0.29	0.33
	Week 5	0.22	0.31	0.41	0.42
Arsenic	Week 1	< LOD	< LOD	0.026	< LOD
	Week 2	< LOD	0.048	< LOD	< LOD
	Week 3	< LOD	< LOD	< LOD	< LOD
	Week 4	< LOD	< LOD	< LOD	< LOD
	Week 5	< LOD	< LOD	< LOD	< LOD
Beryllium	Week 1	< LOD	< LOD	< LOD	< LOD
	Week 2	< LOD	< LOD	< LOD	< LOD
	Week 3	0.0002	< LOD	< LOD	< LOD
	Week 4	< LOD	< LOD	< LOD	< LOD
	Week 5	< LOD	< LOD	< LOD	< LOD
Cadmium	Week 1	< LOD	< LOD	< LOD	< LOD
	Week 2	< LOD	< LOD	< LOD	< LOD
	Week 3	< LOD	< LOD	< LOD	< LOD
	Week 4	< LOD	< LOD	< LOD	< LOD
	Week 5	< LOD	< LOD	< LOD	< LOD
Copper	Week 1	0.048	0.049	0.018	0.018
	Week 2	0.042	0.037	0.024	0.032
	Week 3	0.045	0.047	0.018	0.019
	Week 4	0.038	0.062	0.018	0.012
	Week 5	0.031	0.047	0.033	0.02
Lead	Week 1	< LOD	< LOD	< LOD	< LOD
	Week 2	< LOD	< LOD	< LOD	< LOD
	Week 3	0.016	0.021	0.0089	0.013
	Week 4	< LOD	< LOD	< LOD	< LOD
	Week 5	< LOD	< LOD	< LOD	< LOD
Manganese	Week 1	0.0058	0.0025	0.0037	0.013
	Week 2	0.025	0.017	0.022	0.034
	Week 3	0.11	0.049	0.044	0.031
	Week 4	0.028	0.046	0.013	0.03
	Week 5	0.011	0.0097	0.017	0.014
Nickel	Week 1	< LOD	< LOD	< LOD	< LOD
	Week 2	< LOD	< LOD	0.0012	0.0013
	Week 3	0.004	< LOD	0.0011	< LOD
	Week 4	0.0027	0.0025	0.00088	0.0013
	Week 5	< LOD	< LOD	< LOD	< LOD
Selenium	Week 1	0.033	0.028	0.024	0.041
	Week 2	0.024	< LOD	0.03	0.025
	Week 3	< LOD	< LOD	< LOD	< LOD
	Week 4	< LOD	< LOD	< LOD	0.021
	Week 5	< LOD	< LOD	< LOD	< LOD

Note 1: All values are in units of micrograms per cubic meter.

Note 2: < LOD = Less than Limit of Detection (LOD).

Note 3: Sample dates are shown in the cover page for this table.

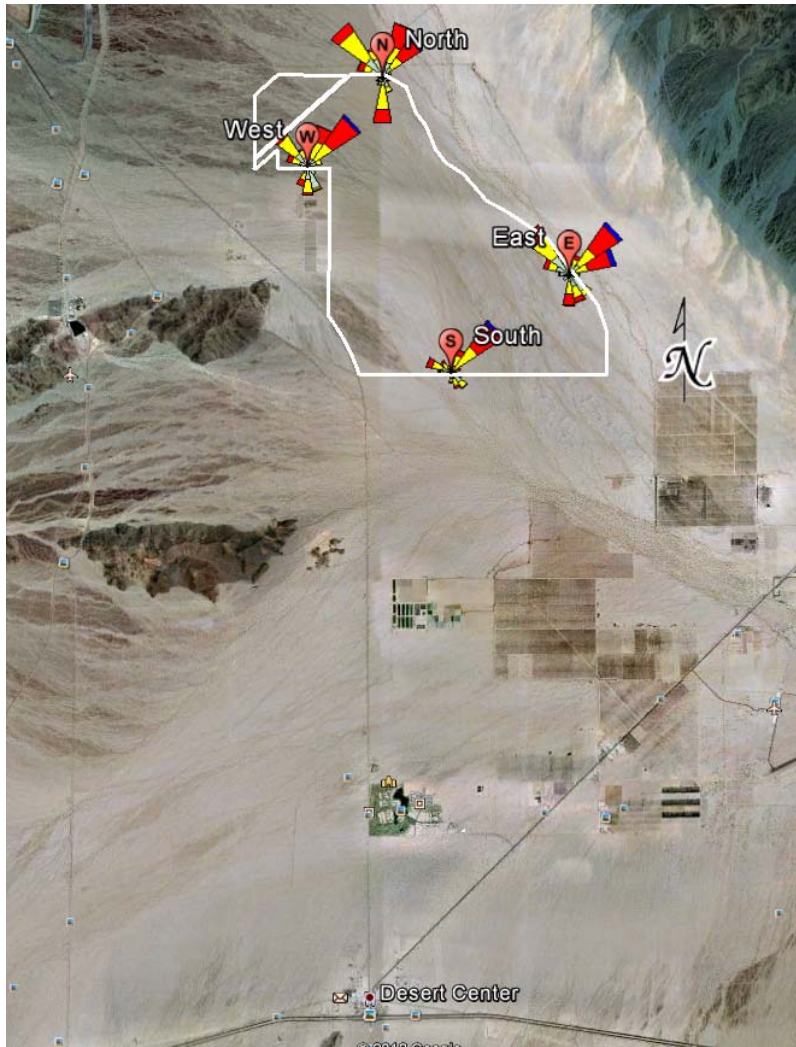


Figure 1: Meteorological Data Summary

The triangles in Figure 1 indicate the direction the wind was blowing **to** rather than **from**. The table below provides a brief explanation of the various wind speed classes.

Color	Wind Speed (knots)
Cyan	≥ 22 knots
Green	17 – 21 knots
Blue	11 – 17 knots
Red	7 – 11 knots
Yellow	4 – 7 knots
Light Green	1 – 4 knots