

DOCKETED

Docket Number:	09-AFC-07C
Project Title:	Palen Solar Power Project - Compliance
TN #:	201282
Document Title:	Exh. 3070 Desert Sunlight Air Quality Monitoring Report May 2012
Description:	AQ MONITORING REPORT
Filer:	Ileene Anderson
Organization:	Center for Biological Diversity
Submitter Role:	Intervenor
Submission Date:	11/21/2013 4:14:14 PM
Docketed Date:	11/21/2013

**Desert Sunlight Solar Farm
Air Quality Monitoring Report**

May 2012





Report Index

Tables/Figures

Number	Table/Figure Name
Table 1	PM10 24-hour Time-Weighted Averages, All Sites
Table 2	PM2.5 24-hour Time-Weighted Averages, All Sites
Table 3	Hourly BAM Data, All Sites
Table 4	Monitored Constituents
Figure 1	Meteorological Data Summary



**Table 1: PM10 24-hour Time-Weighted Averages, All Sites
(See Footnotes)**

All values are in units of micrograms per cubic meter.

Date	North Station	East Station	South Station	West Station
5/1/2012	25	31	34	26
5/2/2012	24	19	24	23
5/3/2012	20	19	21	20
5/4/2012	22	21	25	22
5/5/2012	28	31	29	26
5/6/2012	22	25	23	24
5/7/2012	19	25	52	17
5/8/2012	61	68	62	51
5/9/2012	20	20	21	18
5/10/2012	297	296	295	293
5/11/2012	28	31	32	34
5/12/2012	28	31	28	28
5/13/2012	22	23	22	23
5/14/2012	21	27	24	23
5/15/2012	---	19	25	18
5/16/2012	24	33	35	30
5/17/2012	34	39	67	58
5/18/2012	35	38	41	38
5/19/2012	25	28	24	24
5/20/2012	23	26	---	24
5/21/2012	---	25	No Data	23
5/22/2012	---	33	No Data	29
5/23/2012	108	122	---	110
5/24/2012	115	119	119	114
5/25/2012	76	124	174	67
5/26/2012	15	17	20	14
5/27/2012	14	15	14	12
5/28/2012	12	12	9	12
5/29/2012	19	24	20	15
5/30/2012	18	20	21	12
5/31/2012	22	31	30	20

Note 1: Please refer to Table 3 for the raw hourly data and treatment of valid and invalid values. All values in the above table are at actual conditions.

Note 2: Days marked 'No Data' are days for which there is no hourly data.

Note 3: Days marked (---) are days for which there is either more than 7 hours of negative data points or more than 12 hours of invalid data points.



**Table 2: PM2.5 24-hour Time-Weighted Averages, All Sites
(See Footnotes)**

All values are in units of micrograms per cubic meter.

Date	North Station	East Station	South Station	West Station
5/1/2012	9.5	13.8	11.3	8
5/2/2012	8.5	6.9	11.4	6.4
5/3/2012	7.2	11.5	10.2	6.4
5/4/2012	7.5	8.3	8.9	6
5/5/2012	11.1	11.5	12.2	8
5/6/2012	8.5	8.2	8.2	7
5/7/2012	7.3	6.6	11.4	6
5/8/2012	11	15.2	13.3	8.5
5/9/2012	5.8	---	10.1	5
5/10/2012	101.2	102.3	157.1	109.5
5/11/2012	10.1	9.3	22.1	8.7
5/12/2012	20.2	11.3	13.4	10.3
5/13/2012	19.2	29.3	10.1	7.8
5/14/2012	34.6	14	9.2	6.6
5/15/2012	5	7.2	7.9	4.9
5/16/2012	11	15.1	17	7.3
5/17/2012	8.1	31.6	12.3	27
5/18/2012	---	9.4	11.3	7.7
5/19/2012	---	10	13.6	7.7
5/20/2012	---	15.8	---	8.4
5/21/2012	---	11.4	No Data	8.7
5/22/2012	---	8	No Data	9.8
5/23/2012	21.6	30	---	14.6
5/24/2012	26.1	30.3	22.1	---
5/25/2012	16	44	23.2	---
5/26/2012	5.6	20.6	6	---
5/27/2012	13.7	6.6	9	---
5/28/2012	13.7	7.2	6.9	---
5/29/2012	7	5.6	7.6	---
5/30/2012	5	6.3	13	---
5/31/2012	7	15.3	17.5	---

Note 1: Please refer to Table 3 for the raw hourly data and treatment of valid and invalid values. All values in the above table are at actual conditions.

Note 2: Days marked 'No Data' are days for which there is no hourly data.

Note 3: Days marked (---) are days for which there is either more than 7 hours of negative data points or more than 12 hours of invalid data points.



Table 3

Hourly BAM Data, All Stations

Please note the following:

1. PM10 and PM2.5 are at actual conditions.
2. Hours for which there are no BAM data are marked “---”
3. Data marked with **bold red** text is invalid due to either an error code produced by the BAM or hourly wind speed > 25 mph or an out-of-range concentration.
4. Data marked with **bold green** text is valid. However, this data is highlighted since there was either a “warning” error code or hourly shelter temperature change exceeding the instrument tolerance



DESERT SUNLIGHT SOLAR FARM

TABLE 3 - HOURLY BAM DATA

(Please refer to Table 3 cover page for additional details.)

All values are in units of milligrams per cubic meter.

Date	Hour	North Station		East Station		South Station		West Station	
		PM10	PM2.5	PM10	PM2.5	PM10	PM2.5	PM10	PM2.5
5/1/2012	0	0.025	0.011	0.022	0.012	0.025	0.985	0.025	0.008
5/1/2012	1	0.027	0.009	0.025	0.012	0.025	0.014	0.023	0.009
5/1/2012	2	0.027	0.034	0.027	0.012	0.017	0.012	0.020	0.009
5/1/2012	3	0.024	0.007	0.026	0.009	0.021	0.009	0.020	0.008
5/1/2012	4	0.022	0.009	0.024	0.018	0.030	0.009	0.022	0.007
5/1/2012	5	0.019	0.009	0.027	0.015	0.027	0.009	0.046	0.008
5/1/2012	6	0.030	0.008	0.026	0.014	0.028	0.011	0.034	0.011
5/1/2012	7	0.028	0.008	0.033	0.014	0.044	0.014	0.022	0.011
5/1/2012	8	0.024	0.011	0.022	0.013	0.036	0.012	0.021	0.006
5/1/2012	9	0.022	0.010	0.025	0.011	0.028	0.011	0.024	0.005
5/1/2012	10	0.027	0.008	0.021	0.011	0.024	0.011	0.033	0.004
5/1/2012	11	0.024	0.009	0.030	0.040	0.027	0.009	0.030	0.005
5/1/2012	12	0.023	0.009	0.019	0.010	0.023	0.009	0.020	0.011
5/1/2012	13	0.022	0.007	0.069	0.012	0.034	0.011	0.025	0.008
5/1/2012	14	0.025	0.007	0.036	0.010	0.046	0.011	0.030	0.006
5/1/2012	15	0.027	0.010	0.042	0.009	0.081	0.012	0.028	0.008
5/1/2012	16	0.027	0.010	0.052	0.011	0.073	0.018	0.030	0.009
5/1/2012	17	0.031	0.008	0.068	0.018	0.046	0.014	0.034	0.007
5/1/2012	18	0.022	0.015	0.031	0.015	0.045	0.014	0.026	0.008
5/1/2012	19	0.018	0.003	0.025	0.012	0.031	0.011	0.021	0.009
5/1/2012	20	0.021	0.005	0.024	0.015	0.023	0.010	0.023	0.009
5/1/2012	21	0.023	0.006	0.028	0.014	0.023	0.009	0.014	0.008
5/1/2012	22	0.023	0.007	0.023	0.013	0.019	0.009	0.020	0.008
5/1/2012	23	0.027	0.007	0.028	0.011	0.031	0.012	0.037	0.009
5/2/2012	0	0.031	0.006	0.032	0.012	0.027	0.010	0.031	0.008
5/2/2012	1	0.030	0.008	0.030	0.010	0.027	0.009	0.026	0.007
5/2/2012	2	0.029	0.009	0.017	0.006	0.022	0.008	0.021	0.007
5/2/2012	3	0.032	0.009	0.027	0.007	0.028	0.009	0.033	0.010
5/2/2012	4	0.027	0.008	0.026	0.009	0.027	0.009	0.025	0.010
5/2/2012	5	0.024	0.007	0.029	0.010	0.026	0.008	0.030	0.007
5/2/2012	6	0.026	0.007	---	---	0.034	0.009	0.023	0.007
5/2/2012	7	0.027	0.008	---	---	0.041	0.016	0.024	0.009
5/2/2012	8	0.027	0.009	0.985	0.985	0.031	0.010	0.030	0.006
5/2/2012	9	0.032	0.007	0.011	-0.004	0.026	0.007	0.042	0.006
5/2/2012	10	0.027	0.985	0.008	-0.004	0.018	0.007	0.019	0.007
5/2/2012	11	0.985	0.985	0.018	-0.002	0.025	0.008	0.019	0.004
5/2/2012	12	0.985	0.019	0.013	0.002	0.014	0.007	0.024	0.003
5/2/2012	13	0.022	0.010	0.011	0.005	0.014	0.985	0.030	0.000
5/2/2012	14	0.016	0.006	0.008	0.006	0.017	0.985	0.018	0.000
5/2/2012	15	0.019	0.004	0.021	0.985	0.043	0.985	0.018	0.002
5/2/2012	16	0.021	0.006	0.013	0.015	0.021	0.028	0.015	0.985
5/2/2012	17	0.019	0.008	0.025	0.008	0.015	0.017	0.014	0.985
5/2/2012	18	0.022	0.007	0.015	0.007	0.016	0.012	0.018	0.006
5/2/2012	19	0.018	0.008	0.016	0.007	0.019	0.012	0.015	0.007
5/2/2012	20	0.017	0.011	0.015	0.010	0.017	0.009	0.018	0.006
5/2/2012	21	0.022	0.009	0.023	0.012	0.022	0.015	0.020	0.009
5/2/2012	22	0.024	0.011	0.024	0.012	0.020	0.013	0.017	0.011
5/2/2012	23	0.021	0.011	0.026	0.010	0.020	0.016	0.021	0.009



DESERT SUNLIGHT SOLAR FARM

TABLE 3 - HOURLY BAM DATA

(Please refer to Table 3 cover page for additional details.)

All values are in units of milligrams per cubic meter.

Date	Hour	North Station		East Station		South Station		West Station	
		PM10	PM2.5	PM10	PM2.5	PM10	PM2.5	PM10	PM2.5
5/3/2012	0	0.025	0.012	0.023	0.008	0.022	0.017	0.016	0.008
5/3/2012	1	0.023	0.013	0.018	0.009	0.020	0.009	0.018	0.007
5/3/2012	2	0.024	0.011	0.025	0.023	0.022	0.010	0.021	0.006
5/3/2012	3	0.025	0.007	0.020	0.013	0.025	0.009	0.025	0.008
5/3/2012	4	0.021	0.008	0.018	0.012	0.021	0.007	0.018	0.006
5/3/2012	5	0.027	0.010	0.019	0.012	0.019	0.010	0.024	0.006
5/3/2012	6	0.020	0.009	0.017	0.010	0.021	0.013	0.029	0.008
5/3/2012	7	0.024	0.009	0.023	0.009	0.028	0.011	0.019	0.007
5/3/2012	8	0.025	0.010	0.025	0.007	0.036	0.008	0.024	0.005
5/3/2012	9	0.012	0.008	0.017	0.005	0.017	0.006	0.017	0.006
5/3/2012	10	0.015	0.006	0.014	0.005	0.011	0.007	0.017	0.006
5/3/2012	11	0.020	0.005	0.014	0.017	0.011	0.009	0.019	0.006
5/3/2012	12	0.017	0.004	0.014	0.010	0.017	0.008	0.018	0.006
5/3/2012	13	0.015	0.004	0.015	0.010	0.013	0.009	0.022	0.003
5/3/2012	14	0.017	0.003	0.015	0.011	0.020	0.017	0.026	0.005
5/3/2012	15	0.015	0.005	0.013	0.029	0.019	0.010	0.018	0.007
5/3/2012	16	0.024	0.005	0.019	0.018	0.022	0.010	0.019	0.005
5/3/2012	17	0.020	0.003	0.017	0.008	0.021	0.010	0.015	0.005
5/3/2012	18	0.015	0.005	0.018	0.008	0.017	0.007	0.019	0.008
5/3/2012	19	0.015	0.006	0.023	0.009	0.027	0.008	0.028	0.006
5/3/2012	20	0.014	0.006	0.023	0.009	0.023	0.013	0.014	0.006
5/3/2012	21	0.017	0.008	0.023	0.009	0.027	0.014	0.019	0.010
5/3/2012	22	0.023	0.008	0.026	0.012	0.024	0.012	0.022	0.009
5/3/2012	23	0.019	0.008	0.021	0.014	0.017	0.011	0.024	0.005
5/4/2012	0	0.018	0.009	0.024	0.013	0.025	0.008	0.016	0.004
5/4/2012	1	0.028	0.008	0.043	0.015	0.018	0.009	0.027	0.007
5/4/2012	2	0.025	0.010	0.026	0.014	0.027	0.013	0.021	0.008
5/4/2012	3	0.028	0.012	0.036	0.012	0.037	0.014	0.029	0.008
5/4/2012	4	0.030	0.011	0.026	0.010	0.029	0.013	0.027	0.009
5/4/2012	5	0.030	0.012	0.024	0.010	0.029	0.011	0.033	0.012
5/4/2012	6	0.031	0.014	0.033	0.008	0.032	0.010	0.030	0.011
5/4/2012	7	0.025	0.010	0.021	0.010	0.026	0.009	0.029	0.008
5/4/2012	8	0.026	0.007	0.032	0.013	0.040	0.011	0.025	0.006
5/4/2012	9	0.029	0.008	0.024	0.009	0.045	0.013	0.025	0.004
5/4/2012	10	0.026	0.009	0.020	0.007	0.035	0.013	0.021	0.005
5/4/2012	11	0.024	0.010	0.026	0.005	0.027	0.009	0.021	0.004
5/4/2012	12	0.014	0.007	0.008	0.003	0.013	0.006	0.019	0.002
5/4/2012	13	0.014	0.007	0.007	0.005	0.018	0.007	0.024	0.005
5/4/2012	14	0.017	0.003	0.009	0.008	0.016	0.006	0.017	0.005
5/4/2012	15	0.011	-0.003	0.010	0.007	0.012	0.003	0.011	0.003
5/4/2012	16	0.010	-0.003	0.009	0.002	0.011	0.003	0.009	0.004
5/4/2012	17	0.012	0.001	0.011	0.001	0.020	0.004	0.010	0.003
5/4/2012	18	0.017	0.005	0.011	0.002	0.016	0.004	0.014	0.001
5/4/2012	19	0.013	0.006	0.017	0.004	0.017	0.006	0.016	0.004
5/4/2012	20	0.022	0.008	0.013	0.007	0.021	0.008	0.033	0.005
5/4/2012	21	0.022	0.009	0.032	0.011	0.049	0.007	0.013	0.006
5/4/2012	22	0.023	0.009	0.021	0.011	0.018	0.010	0.023	0.009
5/4/2012	23	0.032	0.011	0.024	0.012	0.029	0.016	0.025	0.010



DESERT SUNLIGHT SOLAR FARM

TABLE 3 - HOURLY BAM DATA

(Please refer to Table 3 cover page for additional details.)

All values are in units of milligrams per cubic meter.

Date	Hour	North Station		East Station		South Station		West Station	
		PM10	PM2.5	PM10	PM2.5	PM10	PM2.5	PM10	PM2.5
5/5/2012	0	0.034	0.012	0.034	0.013	0.027	0.011	0.032	0.012
5/5/2012	1	0.026	0.016	0.064	0.013	0.031	0.011	0.028	0.012
5/5/2012	2	0.028	0.017	0.030	0.014	0.026	0.010	0.022	0.013
5/5/2012	3	0.027	0.013	0.045	0.013	0.029	0.010	0.025	0.011
5/5/2012	4	0.025	0.017	0.032	0.013	0.027	0.009	0.027	0.009
5/5/2012	5	0.037	0.017	0.035	0.017	0.034	0.012	0.021	0.010
5/5/2012	6	0.037	0.016	0.031	0.015	0.027	0.012	0.028	0.012
5/5/2012	7	0.044	0.012	0.033	0.013	0.040	0.016	0.033	0.012
5/5/2012	8	0.026	0.010	0.036	0.010	0.027	0.010	0.027	0.009
5/5/2012	9	0.020	0.010	0.044	0.008	0.022	0.009	0.020	0.007
5/5/2012	10	0.026	0.012	0.034	0.008	0.033	0.009	0.033	0.008
5/5/2012	11	0.034	0.011	0.046	0.009	0.051	0.010	0.041	0.006
5/5/2012	12	0.032	0.007	0.026	0.010	0.051	0.008	0.030	0.003
5/5/2012	13	0.029	0.009	0.023	0.011	0.026	0.009	0.025	0.005
5/5/2012	14	0.024	0.010	0.022	0.009	0.023	0.011	0.026	0.006
5/5/2012	15	0.022	0.007	0.018	0.008	0.019	0.009	0.028	0.004
5/5/2012	16	0.020	0.008	0.019	0.009	0.021	0.008	0.021	0.004
5/5/2012	17	0.019	0.009	0.016	0.010	0.026	0.030	0.027	0.006
5/5/2012	18	0.022	0.009	0.027	0.012	0.023	0.025	0.022	0.006
5/5/2012	19	0.020	0.008	0.025	0.012	0.025	0.019	0.017	0.007
5/5/2012	20	0.020	0.006	0.019	0.012	0.020	0.019	0.019	0.007
5/5/2012	21	0.031	0.007	0.030	0.013	0.027	0.007	0.022	0.006
5/5/2012	22	0.032	0.010	0.027	0.013	0.025	0.009	0.025	0.008
5/5/2012	23	0.025	0.014	0.031	0.011	0.034	0.009	0.028	0.009
5/6/2012	0	0.028	0.014	0.029	0.009	0.027	0.007	0.027	0.007
5/6/2012	1	0.025	0.015	0.035	0.011	0.028	0.007	0.024	0.008
5/6/2012	2	0.031	0.011	0.029	0.011	0.022	0.008	0.028	0.009
5/6/2012	3	0.029	0.008	0.038	0.012	0.030	0.009	0.026	0.009
5/6/2012	4	0.027	0.011	0.033	0.013	0.028	0.011	0.029	0.011
5/6/2012	5	0.030	0.012	0.045	0.012	0.027	0.010	0.027	0.009
5/6/2012	6	0.034	0.012	0.027	0.011	0.032	0.009	0.031	0.011
5/6/2012	7	0.028	0.010	0.028	0.009	0.035	0.015	0.027	0.010
5/6/2012	8	0.028	0.011	0.033	0.011	0.030	0.010	0.032	0.009
5/6/2012	9	0.025	0.011	0.029	0.009	0.026	0.009	0.027	0.010
5/6/2012	10	0.017	0.007	0.025	0.006	0.018	0.006	0.014	0.006
5/6/2012	11	0.023	0.005	0.017	0.005	0.018	0.004	0.077	0.005
5/6/2012	12	0.017	0.004	0.012	0.002	0.024	0.005	0.017	0.002
5/6/2012	13	0.011	0.004	0.012	0.004	0.017	0.005	0.019	0.003
5/6/2012	14	0.016	0.006	0.018	0.006	0.027	0.006	0.018	0.005
5/6/2012	15	0.013	0.007	0.016	0.005	0.013	0.007	0.013	0.004
5/6/2012	16	0.019	0.006	0.017	0.004	0.017	0.010	0.019	0.006
5/6/2012	17	0.018	0.006	0.016	0.005	0.018	0.009	0.018	0.008
5/6/2012	18	0.021	0.006	0.017	0.007	0.017	0.007	0.015	0.007
5/6/2012	19	0.017	0.004	0.027	0.006	0.016	0.009	0.020	0.005
5/6/2012	20	0.018	0.006	0.018	0.005	0.017	0.009	0.014	0.006
5/6/2012	21	0.020	0.010	0.028	0.019	0.021	0.009	0.020	0.006
5/6/2012	22	0.017	0.009	0.021	0.008	0.022	0.008	0.011	0.006
5/6/2012	23	0.017	0.009	0.019	0.008	0.013	0.985	0.011	0.006



DESERT SUNLIGHT SOLAR FARM

TABLE 3 - HOURLY BAM DATA

(Please refer to Table 3 cover page for additional details.)

All values are in units of milligrams per cubic meter.

Date	Hour	North Station		East Station		South Station		West Station	
		PM10	PM2.5	PM10	PM2.5	PM10	PM2.5	PM10	PM2.5
5/7/2012	0	0.014	0.008	0.022	0.010	0.013	0.009	0.012	0.005
5/7/2012	1	0.012	0.008	0.020	0.009	0.014	0.007	0.013	0.004
5/7/2012	2	0.015	0.008	0.015	0.006	0.014	0.007	0.012	0.004
5/7/2012	3	0.015	0.008	0.024	0.009	0.016	0.008	0.012	0.007
5/7/2012	4	0.014	0.009	0.018	0.009	0.019	0.007	0.017	0.007
5/7/2012	5	0.018	0.008	0.018	0.006	0.014	0.008	0.016	0.006
5/7/2012	6	0.018	0.009	0.025	0.006	0.023	0.009	0.017	0.006
5/7/2012	7	0.021	0.009	0.020	0.006	0.036	0.008	0.020	0.008
5/7/2012	8	0.018	0.008	0.018	0.006	0.038	0.009	0.019	0.007
5/7/2012	9	0.016	0.006	0.022	0.005	0.107	0.011	0.020	0.003
5/7/2012	10	0.021	0.005	0.024	0.004	0.069	0.009	0.018	0.001
5/7/2012	11	0.018	0.005	0.018	0.006	0.112	0.008	0.015	0.002
5/7/2012	12	0.019	0.005	0.035	0.004	0.106	0.028	0.018	0.004
5/7/2012	13	0.021	0.005	0.031	0.003	0.074	0.985	0.019	0.006
5/7/2012	14	0.025	0.007	0.022	0.007	0.103	0.985	0.027	0.007
5/7/2012	15	0.017	0.008	0.064	0.009	0.195	0.985	0.018	0.007
5/7/2012	16	0.036	0.006	0.058	0.009	0.056	0.985	0.026	0.007
5/7/2012	17	0.025	0.008	0.030	0.010	0.070	0.985	0.013	0.008
5/7/2012	18	0.020	0.009	0.028	0.010	0.070	0.985	0.020	0.008
5/7/2012	19	0.018	0.008	0.026	0.007	0.024	0.985	0.021	0.010
5/7/2012	20	0.020	0.006	0.014	0.003	0.028	0.985	0.017	0.010
5/7/2012	21	0.017	0.005	0.018	0.001	0.018	0.032	0.016	0.007
5/7/2012	22	0.019	0.009	0.020	0.005	0.016	0.985	0.017	0.006
5/7/2012	23	0.016	0.009	0.021	0.008	0.017	0.985	0.013	0.004
5/8/2012	0	0.011	0.006	0.014	0.006	0.019	0.008	0.035	0.005
5/8/2012	1	0.020	0.006	0.051	0.006	0.018	0.008	0.017	0.006
5/8/2012	2	0.013	0.007	0.016	0.010	0.017	0.008	0.013	0.005
5/8/2012	3	0.028	0.009	0.036	0.038	0.026	0.007	0.035	0.005
5/8/2012	4	0.590	0.074	0.694	0.098	0.547	0.064	0.468	0.054
5/8/2012	5	0.090	0.021	0.150	0.032	0.083	0.017	0.064	0.009
5/8/2012	6	0.035	0.008	0.024	0.010	0.046	0.013	0.035	0.009
5/8/2012	7	0.113	0.020	0.122	0.018	0.057	0.012	0.061	0.010
5/8/2012	8	0.182	0.019	0.174	0.039	0.199	0.022	0.198	0.022
5/8/2012	9	0.058	0.008	0.048	0.008	0.064	0.008	0.048	0.006
5/8/2012	10	0.020	0.006	0.054	0.005	0.073	0.007	0.015	0.005
5/8/2012	11	0.025	0.003	0.023	0.005	0.023	0.004	0.021	0.005
5/8/2012	12	---	---	0.017	0.006	0.032	0.004	0.020	0.002
5/8/2012	13	0.985	0.985	0.024	0.017	0.052	0.029	0.028	0.002
5/8/2012	14	0.014	0.007	0.024	0.005	0.032	0.035	0.040	0.005
5/8/2012	15	0.014	0.005	0.019	0.004	0.015	0.009	0.016	0.006
5/8/2012	16	0.017	0.004	0.011	0.004	0.020	0.007	0.014	0.006
5/8/2012	17	0.013	0.004	0.017	0.005	0.061	0.010	0.018	0.006
5/8/2012	18	0.014	0.004	0.018	0.008	0.017	0.010	0.010	0.006
5/8/2012	19	0.014	0.005	0.014	0.008	0.014	0.006	0.015	0.005
5/8/2012	20	0.017	0.006	0.020	0.007	0.016	0.008	0.013	0.004
5/8/2012	21	0.024	0.007	0.015	0.008	0.019	0.008	0.013	0.007
5/8/2012	22	0.016	0.007	0.020	0.010	0.015	0.007	0.016	0.007
5/8/2012	23	0.017	0.007	0.025	0.008	0.018	0.009	0.012	0.006



DESERT SUNLIGHT SOLAR FARM

TABLE 3 - HOURLY BAM DATA

(Please refer to Table 3 cover page for additional details.)

All values are in units of milligrams per cubic meter.

Date	Hour	North Station		East Station		South Station		West Station	
		PM10	PM2.5	PM10	PM2.5	PM10	PM2.5	PM10	PM2.5
5/9/2012	0	0.019	0.008	0.039	0.008	0.022	0.009	0.017	0.006
5/9/2012	1	0.016	0.008	---	---	0.016	0.008	0.009	0.007
5/9/2012	2	0.013	0.008	---	---	0.013	0.009	0.009	0.006
5/9/2012	3	0.014	0.008	---	---	0.015	0.007	0.012	0.003
5/9/2012	4	0.020	0.007	---	---	0.016	0.006	0.017	0.001
5/9/2012	5	0.017	0.005	---	---	0.015	0.006	0.015	0.003
5/9/2012	6	---	---	---	---	0.022	0.005	0.020	0.005
5/9/2012	7	---	---	---	---	0.046	0.007	0.021	0.006
5/9/2012	8	---	---	0.985	0.985	0.027	0.010	0.021	0.005
5/9/2012	9	0.985	0.985	0.010	-0.006	0.019	0.009	0.023	0.001
5/9/2012	10	0.010	0.000	0.008	-0.007	0.022	0.008	-0.015	-0.015
5/9/2012	11	0.018	0.000	0.007	-0.008	0.021	0.006	0.025	0.985
5/9/2012	12	0.985	0.985	0.009	-0.006	0.016	0.006	0.017	0.001
5/9/2012	13	0.018	0.004	0.020	0.000	0.024	0.985	0.022	0.002
5/9/2012	14	0.018	0.004	0.017	0.985	0.021	0.985	0.017	0.003
5/9/2012	15	0.054	0.005	0.985	0.985	0.021	0.009	0.019	0.003
5/9/2012	16	0.017	0.006	0.985	0.002	0.020	0.054	0.019	0.002
5/9/2012	17	0.019	0.007	0.026	0.004	0.018	0.011	0.017	0.005
5/9/2012	18	0.018	0.005	0.024	0.006	0.015	0.009	0.015	0.006
5/9/2012	19	0.018	0.005	0.018	0.007	0.019	0.009	0.033	0.009
5/9/2012	20	0.020	0.006	0.033	0.007	0.022	0.009	0.017	0.010
5/9/2012	21	0.019	0.006	0.024	0.007	0.019	0.007	0.020	0.008
5/9/2012	22	0.025	0.008	0.021	0.010	0.030	0.007	0.020	0.008
5/9/2012	23	0.021	0.010	0.020	0.007	0.021	0.012	0.020	0.009
5/10/2012	0	0.985	0.504	0.985	0.547	0.985	0.568	0.985	0.593
5/10/2012	1	0.985	0.460	0.985	0.433	0.985	0.493	0.985	0.531
5/10/2012	2	0.985	0.348	0.985	0.319	0.985	0.388	0.985	0.348
5/10/2012	3	0.985	0.199	0.985	0.186	0.985	0.158	0.985	0.189
5/10/2012	4	0.877	0.142	0.966	0.136	0.911	0.138	0.944	0.165
5/10/2012	5	0.764	0.129	0.791	0.131	0.741	0.123	0.725	0.136
5/10/2012	6	0.613	0.112	0.609	0.107	0.615	0.109	0.687	0.123
5/10/2012	7	0.663	0.114	0.581	0.101	0.617	0.104	0.612	0.115
5/10/2012	8	0.518	0.089	0.485	0.081	0.500	0.084	0.474	0.096
5/10/2012	9	0.387	0.069	0.376	0.064	0.341	0.062	0.356	0.065
5/10/2012	10	0.236	0.044	0.269	0.048	0.265	0.041	0.245	0.047
5/10/2012	11	0.253	0.044	0.249	0.049	0.222	0.043	0.231	0.044
5/10/2012	12	0.194	0.035	0.164	0.091	0.167	0.129	0.223	0.037
5/10/2012	13	0.144	0.021	0.114	0.040	0.172	0.985	0.125	0.028
5/10/2012	14	0.128	0.015	0.092	0.016	0.072	0.026	0.090	0.017
5/10/2012	15	0.112	0.015	0.136	0.015	0.136	0.027	0.111	0.018
5/10/2012	16	0.104	0.012	0.087	0.015	0.106	0.204	0.096	0.013
5/10/2012	17	0.047	0.010	0.069	0.012	0.099	0.090	0.050	0.008
5/10/2012	18	0.032	0.009	0.053	0.009	0.065	0.096	0.038	0.006
5/10/2012	19	0.038	0.010	0.042	0.009	0.042	0.985	0.034	0.008
5/10/2012	20	0.032	0.016	0.033	0.010	0.033	0.985	0.031	0.006
5/10/2012	21	0.038	0.013	0.034	0.012	0.037	0.985	0.038	0.008
5/10/2012	22	0.034	0.011	0.038	0.012	0.036	0.985	0.024	0.013
5/10/2012	23	0.033	0.009	0.034	0.011	0.035	0.102	0.030	0.013



DESERT SUNLIGHT SOLAR FARM

TABLE 3 - HOURLY BAM DATA

(Please refer to Table 3 cover page for additional details.)

All values are in units of milligrams per cubic meter.

Date	Hour	North Station		East Station		South Station		West Station	
		PM10	PM2.5	PM10	PM2.5	PM10	PM2.5	PM10	PM2.5
5/11/2012	0	0.027	0.010	0.054	0.015	0.031	0.080	0.038	0.013
5/11/2012	1	0.023	0.011	0.031	0.010	0.027	0.015	0.026	0.985
5/11/2012	2	0.025	0.009	0.020	0.009	0.028	0.038	0.022	0.011
5/11/2012	3	0.019	0.008	0.061	0.015	0.022	0.011	0.014	0.007
5/11/2012	4	0.022	0.009	0.032	0.011	0.025	0.010	0.024	0.006
5/11/2012	5	0.028	0.010	0.031	0.010	0.028	0.046	0.024	0.009
5/11/2012	6	0.023	0.011	0.032	0.011	0.029	0.038	0.091	0.012
5/11/2012	7	0.027	0.015	0.025	0.011	0.035	0.012	0.029	0.012
5/11/2012	8	0.041	0.007	0.034	0.009	0.051	0.019	0.041	0.012
5/11/2012	9	0.046	0.009	0.033	0.010	0.047	0.011	0.045	0.009
5/11/2012	10	0.035	0.011	0.030	0.010	0.032	0.012	0.037	0.005
5/11/2012	11	0.036	0.011	0.029	0.007	0.043	0.012	0.032	0.009
5/11/2012	12	0.033	0.010	0.038	0.003	0.041	0.012	0.031	0.008
5/11/2012	13	0.027	0.009	0.031	0.006	0.036	0.009	0.030	0.006
5/11/2012	14	0.028	0.008	0.021	0.008	0.034	0.985	0.089	0.010
5/11/2012	15	0.021	0.008	0.027	0.007	0.021	0.985	0.028	0.009
5/11/2012	16	0.029	0.009	0.029	0.006	0.033	0.985	0.028	0.007
5/11/2012	17	0.026	0.009	0.026	0.007	0.035	0.008	0.027	0.007
5/11/2012	18	0.021	0.009	0.021	0.008	0.018	0.009	0.024	0.008
5/11/2012	19	0.025	0.010	0.021	0.006	0.024	0.008	0.024	0.006
5/11/2012	20	0.030	0.011	0.028	0.008	0.026	0.007	0.025	0.004
5/11/2012	21	0.035	0.012	0.024	0.009	0.027	0.056	0.033	0.009
5/11/2012	22	0.025	0.017	0.032	0.011	0.034	0.011	0.025	0.012
5/11/2012	23	0.029	0.010	0.027	0.015	0.034	0.040	0.029	0.010
5/12/2012	0	0.031	0.016	0.098	0.017	0.036	0.033	0.026	0.011
5/12/2012	1	0.030	0.015	0.030	0.012	0.031	0.014	0.069	0.017
5/12/2012	2	0.038	0.028	0.043	0.023	0.036	0.017	0.032	0.017
5/12/2012	3	0.037	0.017	0.039	0.017	0.040	0.015	0.033	0.016
5/12/2012	4	0.036	0.023	0.038	0.015	0.034	0.018	0.036	0.011
5/12/2012	5	0.035	0.017	0.040	0.017	0.026	0.017	0.027	0.012
5/12/2012	6	0.031	0.014	0.035	0.011	0.034	0.016	0.031	0.012
5/12/2012	7	0.034	0.016	0.030	0.012	0.031	0.016	0.031	0.012
5/12/2012	8	0.034	0.011	0.027	0.011	0.030	0.011	0.028	0.013
5/12/2012	9	0.031	0.015	0.028	0.009	0.027	0.010	0.027	0.011
5/12/2012	10	0.024	0.011	0.030	0.010	0.025	0.009	0.028	0.007
5/12/2012	11	0.023	0.011	0.022	0.011	0.023	0.009	0.023	0.006
5/12/2012	12	0.022	0.145	0.025	0.008	0.028	0.010	0.029	0.006
5/12/2012	13	0.027	0.065	0.031	0.010	0.026	0.985	0.026	0.010
5/12/2012	14	0.044	0.010	0.028	0.010	0.027	0.985	0.031	0.010
5/12/2012	15	0.031	0.012	0.030	0.010	0.033	0.985	0.034	0.010
5/12/2012	16	0.028	0.017	0.032	0.009	0.030	0.985	0.030	0.009
5/12/2012	17	0.024	0.006	0.031	0.007	0.022	0.985	0.024	0.007
5/12/2012	18	0.021	0.009	0.022	0.009	0.019	0.985	0.024	0.008
5/12/2012	19	0.022	0.009	0.019	0.010	0.021	0.008	0.020	0.008
5/12/2012	20	0.014	0.004	0.022	0.008	0.017	0.007	0.017	0.010
5/12/2012	21	0.016	0.004	0.018	0.007	0.022	0.009	0.023	0.008
5/12/2012	22	0.017	0.004	0.016	0.009	0.019	0.011	0.013	0.006
5/12/2012	23	0.023	0.005	0.017	0.010	0.028	0.012	0.018	0.009



DESERT SUNLIGHT SOLAR FARM

TABLE 3 - HOURLY BAM DATA

(Please refer to Table 3 cover page for additional details.)

All values are in units of milligrams per cubic meter.

Date	Hour	North Station		East Station		South Station		West Station	
		PM10	PM2.5	PM10	PM2.5	PM10	PM2.5	PM10	PM2.5
5/13/2012	0	0.022	0.009	0.023	0.009	0.026	0.011	0.018	0.009
5/13/2012	1	0.021	0.008	0.021	0.009	0.027	0.009	0.022	0.007
5/13/2012	2	0.026	0.010	0.030	0.011	0.021	0.009	0.017	0.006
5/13/2012	3	0.021	0.010	0.036	0.011	0.027	0.011	0.021	0.006
5/13/2012	4	0.027	0.077	0.027	0.011	0.024	0.011	0.024	0.009
5/13/2012	5	0.028	0.077	0.033	0.011	0.030	0.012	0.027	0.009
5/13/2012	6	0.026	0.014	0.035	0.010	0.026	0.012	0.024	0.009
5/13/2012	7	0.031	0.018	0.033	0.010	0.023	0.010	0.026	0.009
5/13/2012	8	0.027	0.010	0.022	0.009	0.023	0.010	0.027	0.007
5/13/2012	9	0.026	0.010	0.021	0.006	0.027	0.008	0.027	0.007
5/13/2012	10	0.027	0.008	0.022	0.002	0.022	0.009	0.021	0.008
5/13/2012	11	0.026	0.008	0.020	0.006	0.018	0.009	0.030	0.008
5/13/2012	12	0.018	0.008	0.024	0.010	0.022	0.985	0.025	0.009
5/13/2012	13	0.021	0.007	0.019	0.007	0.027	0.985	0.026	0.008
5/13/2012	14	0.022	0.007	0.022	0.199	0.023	0.985	0.020	0.007
5/13/2012	15	0.015	0.008	0.023	0.014	0.020	0.985	0.023	0.011
5/13/2012	16	0.013	0.008	0.018	0.012	0.018	0.985	0.016	0.010
5/13/2012	17	0.013	0.037	0.017	0.130	0.017	0.985	0.037	0.009
5/13/2012	18	0.012	0.009	0.017	0.152	0.019	0.985	0.015	0.008
5/13/2012	19	0.015	0.007	0.016	0.014	0.015	0.985	0.020	0.006
5/13/2012	20	0.014	0.006	0.018	0.014	0.021	0.985	0.020	0.005
5/13/2012	21	0.024	0.008	0.021	0.026	0.022	0.985	0.017	0.005
5/13/2012	22	0.020	0.009	0.022	0.011	0.018	0.985	0.023	0.006
5/13/2012	23	0.023	0.087	0.021	0.010	0.018	0.985	0.019	0.010
5/14/2012	0	0.022	0.012	0.046	0.011	0.029	0.009	0.038	0.011
5/14/2012	1	0.024	0.011	0.028	0.016	0.016	0.010	0.015	0.009
5/14/2012	2	0.022	0.078	0.032	0.012	0.019	0.011	0.019	0.006
5/14/2012	3	0.021	0.023	0.027	0.011	0.022	0.012	0.014	0.007
5/14/2012	4	0.021	0.026	0.023	0.009	0.017	0.011	0.022	0.008
5/14/2012	5	0.019	0.008	0.023	0.010	0.020	0.010	0.015	0.007
5/14/2012	6	0.017	0.007	0.015	0.011	0.021	0.011	0.014	0.009
5/14/2012	7	0.015	0.024	0.014	0.007	0.033	0.010	0.012	0.006
5/14/2012	8	0.020	0.135	0.014	0.006	0.024	0.004	0.011	0.004
5/14/2012	9	0.015	0.034	0.012	0.004	0.014	0.985	0.019	0.004
5/14/2012	10	0.016	0.006	0.013	0.000	0.020	0.985	0.007	-0.001
5/14/2012	11	0.010	0.008	0.012	0.003	0.015	0.985	0.037	0.000
5/14/2012	12	0.020	0.031	0.127	0.008	0.060	0.985	0.019	0.006
5/14/2012	13	0.025	0.044	0.018	0.007	0.023	0.985	0.035	0.007
5/14/2012	14	0.035	0.008	0.021	0.025	0.022	0.985	0.061	0.006
5/14/2012	15	0.021	0.009	0.036	0.010	0.028	0.985	0.053	0.008
5/14/2012	16	0.037	0.033	0.031	0.006	0.034	0.985	0.032	0.005
5/14/2012	17	0.027	0.075	0.022	0.004	0.016	0.985	0.023	0.006
5/14/2012	18	0.020	0.130	0.018	0.100	0.019	0.985	0.024	0.011
5/14/2012	19	0.021	0.063	0.014	0.041	0.016	0.985	0.018	0.010
5/14/2012	20	0.985	0.042	0.017	0.007	0.013	0.985	0.013	0.009
5/14/2012	21	0.985	0.006	0.030	0.009	0.045	0.005	0.012	0.006
5/14/2012	22	0.985	0.008	0.022	0.009	0.020	0.009	0.015	0.006
5/14/2012	23	0.985	0.010	0.031	0.009	0.026	0.008	0.024	0.008



DESERT SUNLIGHT SOLAR FARM

TABLE 3 - HOURLY BAM DATA

(Please refer to Table 3 cover page for additional details.)

All values are in units of milligrams per cubic meter.

Date	Hour	North Station		East Station		South Station		West Station	
		PM10	PM2.5	PM10	PM2.5	PM10	PM2.5	PM10	PM2.5
5/15/2012	0	0.985	0.010	0.025	0.034	0.028	0.010	0.047	0.009
5/15/2012	1	0.985	0.009	0.042	0.014	0.026	0.012	0.016	0.010
5/15/2012	2	0.985	0.011	0.025	0.010	0.022	0.009	0.020	0.009
5/15/2012	3	0.985	0.010	0.029	0.009	0.023	0.005	0.020	0.008
5/15/2012	4	0.985	0.007	0.040	0.011	0.039	0.006	0.019	0.008
5/15/2012	5	0.985	0.007	0.017	0.009	0.019	0.010	0.018	0.009
5/15/2012	6	0.985	0.006	0.022	0.008	0.027	0.011	0.018	0.008
5/15/2012	7	0.985	0.005	0.025	0.007	0.037	0.010	0.026	0.006
5/15/2012	8	0.985	0.005	0.017	0.006	0.028	0.985	0.012	0.003
5/15/2012	9	0.985	0.004	0.018	0.007	0.089	0.985	0.013	0.001
5/15/2012	10	0.985	0.003	0.007	0.005	0.023	0.985	0.017	0.003
5/15/2012	11	0.985	0.003	0.011	0.003	0.013	0.985	0.011	0.002
5/15/2012	12	0.985	0.000	0.018	0.001	0.014	0.985	0.010	0.000
5/15/2012	13	0.985	0.001	0.017	0.002	0.016	0.985	0.015	-0.001
5/15/2012	14	0.985	0.004	0.016	0.004	0.014	0.985	0.020	0.002
5/15/2012	15	0.985	0.004	0.012	0.003	0.014	0.985	0.024	0.985
5/15/2012	16	0.985	0.003	0.009	0.005	0.035	0.985	0.007	0.985
5/15/2012	17	0.985	0.003	0.006	0.006	0.005	0.010	0.008	0.002
5/15/2012	18	0.985	0.003	0.016	0.004	0.020	0.006	0.011	0.006
5/15/2012	19	0.985	0.003	0.016	0.004	0.016	0.004	0.017	0.005
5/15/2012	20	0.985	0.005	0.016	0.005	0.017	0.005	0.014	0.002
5/15/2012	21	0.985	0.005	0.017	0.005	0.017	0.004	0.018	0.003
5/15/2012	22	0.985	0.003	0.020	0.005	0.016	0.006	0.018	0.006
5/15/2012	23	0.985	0.006	0.023	0.005	0.030	0.010	0.026	0.006
5/16/2012	0	0.985	0.009	0.058	0.008	0.054	0.106	0.051	0.009
5/16/2012	1	0.985	0.010	0.059	0.054	0.048	0.052	0.044	0.011
5/16/2012	2	0.985	0.010	0.044	0.011	0.041	0.032	0.059	0.008
5/16/2012	3	0.985	0.009	0.048	0.078	0.041	0.018	0.038	0.006
5/16/2012	4	0.985	0.010	0.037	0.011	0.033	0.010	0.038	0.008
5/16/2012	5	0.985	0.011	0.048	0.009	0.037	0.009	0.032	0.008
5/16/2012	6	0.985	0.011	0.034	0.008	0.061	0.010	0.030	0.007
5/16/2012	7	0.985	0.012	0.037	0.008	0.058	0.011	0.027	0.007
5/16/2012	8	0.985	0.013	0.032	0.008	0.060	0.011	0.028	0.006
5/16/2012	9	0.985	0.008	0.040	0.008	0.060	0.011	0.030	0.006
5/16/2012	10	0.985	0.006	0.028	0.007	0.037	0.008	0.027	0.006
5/16/2012	11	0.985	0.985	0.019	0.006	0.026	0.005	-0.015	-0.015
5/16/2012	12	0.026	0.033	0.016	0.005	0.022	0.006	0.985	0.985
5/16/2012	13	0.015	0.010	0.014	0.004	0.017	0.007	0.032	0.006
5/16/2012	14	0.019	0.010	0.985	0.985	0.017	0.007	0.020	0.006
5/16/2012	15	0.016	0.008	0.020	0.053	0.985	0.985	0.027	0.006
5/16/2012	16	0.026	0.008	0.019	0.005	0.024	0.985	0.025	0.009
5/16/2012	17	0.021	0.009	0.019	0.006	0.021	0.009	0.021	0.985
5/16/2012	18	0.024	0.012	0.020	0.007	0.023	0.011	0.020	0.007
5/16/2012	19	0.025	0.012	0.044	0.010	0.024	0.011	0.022	0.005
5/16/2012	20	0.024	0.010	0.026	0.011	0.027	0.011	0.019	0.009
5/16/2012	21	0.026	0.011	0.031	0.009	0.024	0.010	0.025	0.007
5/16/2012	22	0.031	0.010	0.037	0.010	0.031	0.009	0.029	0.007
5/16/2012	23	0.032	0.010	0.029	0.011	0.029	0.009	0.024	0.009



DESERT SUNLIGHT SOLAR FARM

TABLE 3 - HOURLY BAM DATA

(Please refer to Table 3 cover page for additional details.)

All values are in units of milligrams per cubic meter.

Date	Hour	North Station		East Station		South Station		West Station	
		PM10	PM2.5	PM10	PM2.5	PM10	PM2.5	PM10	PM2.5
5/17/2012	0	0.032	0.007	0.065	0.013	0.683	0.010	0.088	0.009
5/17/2012	1	---	---	0.048	0.025	0.038	0.010	0.026	0.009
5/17/2012	2	---	---	0.048	0.012	0.052	0.018	0.044	0.010
5/17/2012	3	---	---	0.043	0.015	0.042	0.015	0.036	0.011
5/17/2012	4	---	---	0.040	0.014	0.037	0.011	0.039	0.011
5/17/2012	5	---	---	0.033	0.097	0.028	0.016	0.028	0.011
5/17/2012	6	---	---	0.026	0.008	0.040	0.014	0.025	0.009
5/17/2012	7	---	---	0.025	0.011	0.101	0.015	0.022	0.010
5/17/2012	8	0.985	0.985	0.028	0.009	0.033	0.006	0.025	0.008
5/17/2012	9	0.008	0.000	0.022	0.010	0.025	0.006	0.021	0.006
5/17/2012	10	0.018	-0.001	0.031	0.096	0.023	0.007	0.032	0.007
5/17/2012	11	0.027	0.001	0.032	0.131	0.033	0.010	0.041	0.009
5/17/2012	12	0.025	0.005	0.026	0.132	0.031	0.012	0.557	0.417
5/17/2012	13	0.035	0.007	0.049	0.082	0.036	0.011	0.034	0.011
5/17/2012	14	0.065	0.009	0.032	0.009	0.027	0.011	0.035	0.008
5/17/2012	15	0.030	0.010	0.034	0.008	0.059	0.015	0.037	0.004
5/17/2012	16	0.030	0.010	0.034	0.008	0.025	0.012	0.042	0.006
5/17/2012	17	0.036	0.011	0.041	0.008	0.035	0.013	0.032	0.011
5/17/2012	18	0.036	0.015	0.044	0.008	0.042	0.015	0.032	0.018
5/17/2012	19	0.039	0.012	0.044	0.011	0.043	0.017	0.048	0.014
5/17/2012	20	0.057	0.016	0.062	0.015	0.063	0.010	0.060	0.013
5/17/2012	21	0.036	0.011	0.056	0.010	0.044	0.012	0.029	0.010
5/17/2012	22	0.032	0.985	0.037	0.011	0.042	0.013	0.030	0.010
5/17/2012	23	0.033	0.985	0.040	0.015	0.036	0.016	0.035	0.016
5/18/2012	0	0.022	0.985	0.029	0.010	0.027	0.011	0.053	0.008
5/18/2012	1	0.022	0.985	0.033	0.015	0.033	0.010	0.025	0.009
5/18/2012	2	0.027	0.985	0.021	0.006	0.022	0.010	0.022	0.009
5/18/2012	3	0.011	0.985	0.020	0.006	0.021	0.017	0.015	0.007
5/18/2012	4	0.080	0.985	0.064	0.036	0.070	0.018	0.072	0.009
5/18/2012	5	0.073	0.985	0.069	0.014	0.082	0.025	0.076	0.012
5/18/2012	6	0.061	0.985	0.072	0.014	0.075	0.021	0.065	0.013
5/18/2012	7	0.056	0.985	0.078	0.012	0.083	0.018	0.054	0.012
5/18/2012	8	0.041	0.985	0.042	0.010	0.054	0.012	0.042	0.011
5/18/2012	9	0.038	0.985	0.040	0.007	0.031	0.010	0.033	0.009
5/18/2012	10	0.039	0.985	0.049	0.006	0.066	0.006	0.065	0.006
5/18/2012	11	0.061	0.985	0.039	0.006	0.039	0.007	0.053	0.006
5/18/2012	12	0.032	0.985	0.026	0.005	0.033	0.006	0.030	0.006
5/18/2012	13	0.028	0.985	0.033	0.005	0.031	0.005	0.030	0.005
5/18/2012	14	0.022	0.985	0.021	0.005	0.022	0.005	0.023	0.004
5/18/2012	15	0.021	0.985	0.020	0.005	0.022	0.005	0.022	0.005
5/18/2012	16	0.021	0.985	0.023	0.005	0.021	0.006	0.025	0.005
5/18/2012	17	0.018	0.985	0.015	0.005	0.100	0.010	0.051	0.004
5/18/2012	18	0.022	0.985	0.025	0.006	0.015	0.016	0.019	0.005
5/18/2012	19	0.022	0.985	0.033	0.006	0.024	0.013	0.022	0.007
5/18/2012	20	0.023	0.985	0.026	0.009	0.022	0.011	0.021	0.007
5/18/2012	21	0.031	0.985	0.049	0.011	0.027	0.010	0.028	0.008
5/18/2012	22	0.033	0.985	0.033	0.011	0.030	0.010	0.026	0.008
5/18/2012	23	0.036	0.985	0.042	0.011	0.034	0.010	0.028	0.009



DESERT SUNLIGHT SOLAR FARM

TABLE 3 - HOURLY BAM DATA

(Please refer to Table 3 cover page for additional details.)

All values are in units of milligrams per cubic meter.

Date	Hour	North Station		East Station		South Station		West Station	
		PM10	PM2.5	PM10	PM2.5	PM10	PM2.5	PM10	PM2.5
5/19/2012	0	0.048	0.985	0.056	0.013	0.042	0.082	0.046	0.012
5/19/2012	1	0.036	0.985	0.039	0.014	0.043	0.020	0.038	0.012
5/19/2012	2	0.038	0.985	0.041	0.014	0.037	0.018	0.035	0.010
5/19/2012	3	0.035	0.985	0.062	0.014	0.033	0.011	0.030	0.008
5/19/2012	4	0.036	0.985	0.037	0.012	0.036	0.013	0.034	0.010
5/19/2012	5	0.035	0.985	0.039	0.017	0.037	0.016	0.039	0.012
5/19/2012	6	0.037	0.985	0.032	0.013	0.037	0.016	0.031	0.012
5/19/2012	7	0.027	0.985	0.037	0.013	0.034	0.015	0.028	0.012
5/19/2012	8	0.028	0.985	0.032	0.016	0.026	0.014	0.032	0.010
5/19/2012	9	0.029	0.985	0.031	0.010	0.032	0.012	0.029	0.010
5/19/2012	10	0.027	0.985	0.021	0.008	0.024	0.011	0.019	0.007
5/19/2012	11	0.026	0.985	0.016	0.006	0.018	0.009	0.019	0.005
5/19/2012	12	0.016	0.985	0.012	0.006	0.010	0.007	0.015	0.004
5/19/2012	13	0.015	0.985	0.017	0.006	0.010	0.008	0.013	0.002
5/19/2012	14	0.014	0.985	0.013	0.004	0.010	0.009	0.013	0.006
5/19/2012	15	0.012	0.985	0.049	0.020	0.011	0.011	0.017	0.006
5/19/2012	16	0.010	0.985	0.012	0.007	0.013	0.009	0.010	0.985
5/19/2012	17	0.010	0.985	0.017	0.005	0.014	0.006	0.017	0.985
5/19/2012	18	0.012	0.985	0.014	0.004	0.012	0.005	0.013	0.003
5/19/2012	19	0.011	0.005	0.013	0.005	0.010	0.003	0.013	0.004
5/19/2012	20	0.011	0.003	0.013	0.006	0.012	0.005	0.013	0.005
5/19/2012	21	0.025	0.008	0.022	0.008	0.021	0.007	0.023	0.005
5/19/2012	22	0.022	0.985	0.027	0.010	0.029	0.009	0.019	0.008
5/19/2012	23	0.028	0.985	0.025	0.010	0.029	0.010	0.021	0.007
5/20/2012	0	0.023	0.985	0.034	0.008	0.022	0.012	0.024	0.008
5/20/2012	1	0.022	0.985	0.040	0.009	0.020	0.012	0.022	0.006
5/20/2012	2	0.020	0.985	0.027	0.012	0.024	0.012	0.020	0.003
5/20/2012	3	0.019	0.985	0.038	0.011	0.027	0.011	0.022	0.004
5/20/2012	4	0.027	0.985	0.037	0.010	---	---	0.025	0.010
5/20/2012	5	0.036	0.985	0.042	0.012	---	---	0.033	0.012
5/20/2012	6	0.038	0.985	0.041	0.014	---	---	0.036	0.012
5/20/2012	7	0.034	0.985	0.037	0.014	---	---	0.036	0.014
5/20/2012	8	0.035	0.985	0.041	0.012	---	---	0.036	0.013
5/20/2012	9	0.042	0.985	0.038	0.011	---	---	0.036	0.011
5/20/2012	10	0.034	0.985	0.038	0.009	---	---	0.035	0.012
5/20/2012	11	0.026	0.985	0.021	0.006	---	---	0.025	0.010
5/20/2012	12	0.021	0.985	0.021	0.008	---	---	0.022	0.006
5/20/2012	13	0.018	0.985	0.012	0.008	---	---	0.016	0.006
5/20/2012	14	0.012	0.985	0.013	0.006	---	---	0.015	0.006
5/20/2012	15	0.010	0.985	0.013	0.006	---	---	0.013	0.004
5/20/2012	16	0.009	0.985	0.012	0.006	---	---	0.012	0.985
5/20/2012	17	0.018	0.007	0.015	0.044	---	---	0.031	0.985
5/20/2012	18	0.012	0.005	0.012	0.003	---	---	0.023	0.985
5/20/2012	19	0.021	0.007	0.013	0.045	---	---	0.015	0.985
5/20/2012	20	0.016	0.008	0.021	0.034	---	---	0.014	0.007
5/20/2012	21	0.018	0.006	0.022	0.034	---	---	0.021	0.006
5/20/2012	22	0.020	0.985	0.026	0.024	---	---	0.017	0.007
5/20/2012	23	0.019	0.985	0.017	0.034	---	---	0.025	0.010



DESERT SUNLIGHT SOLAR FARM

TABLE 3 - HOURLY BAM DATA

(Please refer to Table 3 cover page for additional details.)

All values are in units of milligrams per cubic meter.

Date	Hour	North Station		East Station		South Station		West Station	
		PM10	PM2.5	PM10	PM2.5	PM10	PM2.5	PM10	PM2.5
5/21/2012	0	0.022	0.985	0.028	0.018	---	---	0.033	0.011
5/21/2012	1	0.985	0.985	0.026	0.029	---	---	0.022	0.009
5/21/2012	2	0.985	0.985	0.025	0.016	---	---	0.019	0.005
5/21/2012	3	0.985	0.985	0.032	0.010	---	---	0.022	0.006
5/21/2012	4	0.985	0.985	0.030	0.026	---	---	0.019	0.008
5/21/2012	5	0.985	0.985	0.034	0.024	---	---	0.029	0.010
5/21/2012	6	0.985	0.985	0.028	0.016	---	---	0.027	0.011
5/21/2012	7	0.985	0.985	0.027	0.010	---	---	0.028	0.009
5/21/2012	8	0.985	0.985	0.027	0.008	---	---	0.027	0.009
5/21/2012	9	0.985	0.985	0.030	0.008	---	---	0.027	0.009
5/21/2012	10	0.985	0.985	0.026	0.016	---	---	0.021	0.007
5/21/2012	11	0.985	0.985	0.022	0.002	---	---	0.024	0.005
5/21/2012	12	0.985	0.985	0.022	0.006	---	---	0.026	0.008
5/21/2012	13	0.985	0.985	0.007	0.008	---	---	0.036	0.011
5/21/2012	14	0.985	0.985	0.023	0.006	---	---	0.028	0.008
5/21/2012	15	0.985	0.985	0.018	0.006	---	---	0.024	0.985
5/21/2012	16	0.985	0.985	0.030	0.006	---	---	0.021	0.985
5/21/2012	17	0.985	0.006	0.015	0.006	---	---	0.007	0.985
5/21/2012	18	0.019	0.064	0.017	0.005	---	---	0.017	0.985
5/21/2012	19	0.024	0.033	0.026	0.005	---	---	0.015	0.985
5/21/2012	20	0.021	0.031	0.021	0.006	---	---	0.022	0.008
5/21/2012	21	0.027	0.006	0.031	0.011	---	---	0.025	0.010
5/21/2012	22	0.985	0.985	0.033	0.013	---	---	0.021	0.010
5/21/2012	23	0.985	0.985	0.024	0.012	---	---	0.022	0.012
5/22/2012	0	0.985	0.985	0.037	0.010	---	---	0.024	0.012
5/22/2012	1	0.985	0.985	0.031	0.011	---	---	0.041	0.012
5/22/2012	2	0.985	0.985	0.061	0.015	---	---	0.046	0.013
5/22/2012	3	0.985	0.985	0.073	0.017	---	---	0.048	0.016
5/22/2012	4	0.985	0.985	0.050	0.017	---	---	0.036	0.015
5/22/2012	5	0.985	0.985	0.055	0.014	---	---	0.035	0.013
5/22/2012	6	0.985	0.985	0.053	0.015	---	---	0.036	0.012
5/22/2012	7	0.985	0.985	0.040	0.011	---	---	0.039	0.012
5/22/2012	8	0.985	0.985	0.051	0.012	---	---	0.043	0.011
5/22/2012	9	0.985	0.985	0.040	0.011	---	---	0.032	0.009
5/22/2012	10	0.985	0.985	0.035	0.006	---	---	0.033	0.007
5/22/2012	11	0.985	0.985	0.027	0.004	---	---	0.024	0.008
5/22/2012	12	0.985	0.985	0.012	0.002	---	---	0.018	0.009
5/22/2012	13	0.985	0.985	0.010	-0.001	---	---	0.014	0.007
5/22/2012	14	0.985	0.985	0.008	0.001	---	---	0.016	0.006
5/22/2012	15	0.985	0.985	0.019	0.003	---	---	0.013	0.007
5/22/2012	16	0.985	0.985	0.014	0.002	---	---	0.014	0.006
5/22/2012	17	0.985	0.985	0.015	0.002	---	---	0.019	0.985
5/22/2012	18	0.023	0.006	0.019	0.004	---	---	0.021	0.985
5/22/2012	19	0.017	0.007	0.019	0.004	---	---	0.022	0.006
5/22/2012	20	0.985	0.008	0.025	0.006	---	---	0.025	0.009
5/22/2012	21	0.985	0.985	0.029	0.006	---	---	0.021	0.009
5/22/2012	22	0.985	0.985	0.027	0.008	---	---	0.028	0.008
5/22/2012	23	0.985	0.985	0.040	0.012	---	---	0.036	0.008



DESERT SUNLIGHT SOLAR FARM

TABLE 3 - HOURLY BAM DATA

(Please refer to Table 3 cover page for additional details.)

All values are in units of milligrams per cubic meter.

Date	Hour	North Station		East Station		South Station		West Station	
		PM10	PM2.5	PM10	PM2.5	PM10	PM2.5	PM10	PM2.5
5/23/2012	0	0.985	0.985	0.068	0.013	---	---	0.057	0.012
5/23/2012	1	0.985	0.985	0.106	0.025	---	---	0.087	0.022
5/23/2012	2	0.985	0.985	0.094	0.020	---	---	0.086	0.022
5/23/2012	3	0.985	0.985	0.076	0.060	---	---	0.066	0.010
5/23/2012	4	0.985	0.985	0.057	0.058	---	---	0.070	0.015
5/23/2012	5	0.985	0.985	0.110	0.038	---	---	0.102	0.017
5/23/2012	6	0.985	0.985	0.091	0.056	---	---	0.081	0.015
5/23/2012	7	0.985	0.985	0.080	0.031	---	---	0.069	0.013
5/23/2012	8	0.985	0.985	0.131	0.029	---	---	0.114	0.011
5/23/2012	9	0.985	0.985	0.233	0.051	---	---	0.217	0.023
5/23/2012	10	0.144	0.985	0.316	0.058	---	---	0.106	0.013
5/23/2012	11	0.091	0.010	0.194	0.985	---	---	0.098	0.016
5/23/2012	12	0.060	0.011	0.067	0.026	---	---	0.051	0.008
5/23/2012	13	0.046	0.010	0.045	0.014	---	---	0.046	0.007
5/23/2012	14	0.031	0.008	0.034	0.010	0.985	0.985	0.985	0.985
5/23/2012	15	0.030	0.006	0.040	0.004	0.042	0.008	0.032	0.985
5/23/2012	16	0.036	0.008	0.035	0.028	0.031	0.005	0.985	0.985
5/23/2012	17	0.051	0.010	0.056	0.011	0.027	0.004	0.985	0.985
5/23/2012	18	0.077	0.016	0.091	0.012	0.083	0.007	0.081	0.985
5/23/2012	19	0.140	0.042	0.148	0.020	0.140	0.019	0.147	0.985
5/23/2012	20	0.329	0.056	0.333	0.042	0.373	0.044	0.365	0.985
5/23/2012	21	0.249	0.046	0.271	0.035	0.235	0.040	0.203	0.985
5/23/2012	22	0.132	0.039	0.143	0.026	0.153	0.027	0.135	0.985
5/23/2012	23	0.095	0.019	0.115	0.024	0.109	0.020	0.098	0.985
5/24/2012	0	0.067	0.013	0.080	0.018	0.079	0.011	0.069	0.985
5/24/2012	1	0.082	0.014	---	---	0.072	0.018	0.081	0.985
5/24/2012	2	0.182	0.028	---	---	0.131	0.021	0.180	0.985
5/24/2012	3	---	---	---	---	0.151	0.025	0.149	0.985
5/24/2012	4	---	---	---	---	0.106	0.020	0.090	0.985
5/24/2012	5	---	---	---	---	---	---	0.080	0.985
5/24/2012	6	---	---	---	---	---	---	---	---
5/24/2012	7	---	---	---	---	---	---	---	---
5/24/2012	8	0.985	0.985	0.985	0.985	---	---	0.985	0.985
5/24/2012	9	0.084	0.013	0.073	0.003	---	---	0.081	0.985
5/24/2012	10	0.128	0.015	0.136	0.008	---	---	0.131	0.985
5/24/2012	11	0.112	0.013	0.116	0.059	0.985	0.985	0.123	0.985
5/24/2012	12	0.116	0.023	0.129	0.027	0.985	0.985	0.116	0.985
5/24/2012	13	0.139	0.074	0.145	0.015	0.985	0.020	0.137	0.985
5/24/2012	14	0.139	0.021	0.148	0.020	0.132	0.020	0.135	0.985
5/24/2012	15	0.118	0.018	0.132	0.067	0.134	0.022	0.122	0.985
5/24/2012	16	0.139	0.023	0.140	0.025	0.985	0.985	0.130	0.985
5/24/2012	17	0.123	0.021	0.135	0.046	0.190	0.023	0.113	0.985
5/24/2012	18	0.095	0.057	0.114	0.025	0.101	0.022	0.099	0.985
5/24/2012	19	0.105	0.020	0.108	0.055	0.114	0.022	0.101	0.985
5/24/2012	20	0.108	0.024	0.123	0.024	0.119	0.026	0.108	0.985
5/24/2012	21	0.115	0.022	0.118	0.023	0.129	0.022	0.119	0.985
5/24/2012	22	0.109	0.029	0.110	0.030	0.114	0.031	0.114	0.985
5/24/2012	23	0.103	0.041	0.095	0.040	0.100	0.028	0.106	0.985



DESERT SUNLIGHT SOLAR FARM

TABLE 3 - HOURLY BAM DATA

(Please refer to Table 3 cover page for additional details.)

All values are in units of milligrams per cubic meter.

Date	Hour	North Station		East Station		South Station		West Station	
		PM10	PM2.5	PM10	PM2.5	PM10	PM2.5	PM10	PM2.5
5/25/2012	0	0.104	0.035	0.108	0.062	---	---	0.104	0.985
5/25/2012	1	0.084	0.026	0.087	0.039	0.985	0.985	0.082	0.985
5/25/2012	2	0.079	0.024	0.077	0.023	0.075	0.022	0.080	0.985
5/25/2012	3	0.074	0.023	0.066	0.034	0.068	0.018	0.073	0.985
5/25/2012	4	0.051	0.017	0.054	0.023	0.047	0.016	0.057	0.985
5/25/2012	5	0.047	0.016	0.054	0.019	0.047	0.017	0.046	0.985
5/25/2012	6	0.052	0.018	0.054	0.014	0.078	0.046	0.053	0.985
5/25/2012	7	0.053	0.016	0.050	0.017	0.049	0.024	0.051	0.985
5/25/2012	8	0.044	0.011	0.043	0.011	0.044	0.015	0.049	0.985
5/25/2012	9	0.046	0.015	0.046	0.010	0.043	0.015	0.041	0.985
5/25/2012	10	0.031	0.010	0.038	0.007	0.033	0.013	0.036	0.985
5/25/2012	11	0.030	0.010	0.031	0.007	0.034	0.010	0.038	0.985
5/25/2012	12	0.044	0.011	0.062	0.009	0.035	0.009	0.033	0.985
5/25/2012	13	0.089	0.012	0.154	0.010	0.082	0.010	0.069	0.985
5/25/2012	14	0.117	0.011	0.599	0.037	0.490	0.025	0.070	0.985
5/25/2012	15	0.245	0.018	0.985	0.288	0.985	0.098	0.185	0.985
5/25/2012	16	0.193	0.019	0.985	0.281	0.985	0.062	0.111	0.985
5/25/2012	17	0.097	0.011	0.418	0.041	0.259	0.020	0.066	0.985
5/25/2012	18	0.066	0.012	0.298	0.033	0.161	0.022	0.069	0.985
5/25/2012	19	0.094	0.013	0.219	0.025	0.100	0.014	0.096	0.985
5/25/2012	20	0.082	0.020	0.121	0.033	0.077	0.016	0.076	0.985
5/25/2012	21	0.044	0.013	0.064	0.015	0.053	0.013	0.044	0.985
5/25/2012	22	0.042	0.012	0.052	0.011	0.036	0.013	0.040	0.985
5/25/2012	23	0.027	0.010	0.037	0.007	0.036	0.012	0.029	0.985
5/26/2012	0	0.022	0.011	0.023	0.008	0.024	0.013	0.023	0.985
5/26/2012	1	0.020	0.010	0.027	0.008	0.021	0.010	0.025	0.985
5/26/2012	2	0.033	0.007	0.071	0.010	0.098	0.007	0.039	0.985
5/26/2012	3	0.012	0.006	0.015	0.011	0.021	0.007	0.012	0.985
5/26/2012	4	0.011	0.006	0.016	0.055	0.012	0.008	0.011	0.985
5/26/2012	5	0.010	0.005	0.013	0.036	0.011	0.008	0.010	0.985
5/26/2012	6	0.015	0.006	0.012	0.026	0.985	0.006	0.008	0.985
5/26/2012	7	0.017	0.006	0.009	0.020	0.985	0.005	0.009	0.985
5/26/2012	8	0.011	0.005	0.009	0.034	0.985	0.001	0.011	0.985
5/26/2012	9	0.011	0.004	0.007	0.013	0.985	0.001	0.011	0.985
5/26/2012	10	0.019	0.006	0.004	0.028	0.985	0.003	0.011	0.985
5/26/2012	11	0.007	0.006	0.007	0.005	0.985	0.004	0.010	0.985
5/26/2012	12	0.008	0.004	0.008	0.026	0.985	0.004	0.007	0.985
5/26/2012	13	0.008	0.003	0.008	-0.004	0.008	0.004	0.007	0.985
5/26/2012	14	0.010	0.004	0.010	0.042	0.018	0.008	0.011	0.985
5/26/2012	15	0.014	0.005	0.032	0.029	0.013	0.007	0.011	0.985
5/26/2012	16	0.013	0.005	0.034	0.000	0.016	0.004	0.011	0.985
5/26/2012	17	0.011	0.003	0.016	0.028	0.011	0.006	0.015	0.985
5/26/2012	18	0.021	0.002	0.011	0.067	0.012	0.005	0.017	0.985
5/26/2012	19	0.015	0.006	0.008	0.020	0.019	0.006	0.013	0.985
5/26/2012	20	0.013	0.008	0.008	0.008	0.016	0.006	0.019	0.985
5/26/2012	21	0.013	0.007	0.020	0.009	0.014	0.006	0.013	0.985
5/26/2012	22	0.013	0.005	0.020	0.009	0.015	0.007	0.014	0.985
5/26/2012	23	0.021	0.004	0.022	0.006	0.017	0.008	0.021	0.985



DESERT SUNLIGHT SOLAR FARM

TABLE 3 - HOURLY BAM DATA

(Please refer to Table 3 cover page for additional details.)

All values are in units of milligrams per cubic meter.

Date	Hour	North Station		East Station		South Station		West Station	
		PM10	PM2.5	PM10	PM2.5	PM10	PM2.5	PM10	PM2.5
5/27/2012	0	0.018	0.009	0.018	0.007	0.017	0.006	0.015	0.985
5/27/2012	1	0.023	0.011	0.024	0.005	0.020	0.007	0.017	0.985
5/27/2012	2	0.015	0.008	0.024	0.001	0.016	0.007	0.013	0.985
5/27/2012	3	0.015	0.006	0.019	0.005	0.985	0.005	0.012	0.985
5/27/2012	4	0.015	0.006	0.018	0.006	0.985	0.005	0.017	0.985
5/27/2012	5	0.018	0.009	0.012	0.008	0.985	0.005	0.013	0.985
5/27/2012	6	0.016	0.008	0.019	0.009	0.985	0.009	0.013	0.985
5/27/2012	7	0.013	0.006	0.013	0.007	0.985	0.008	0.014	0.985
5/27/2012	8	0.018	0.006	0.017	0.005	0.985	0.004	0.013	0.985
5/27/2012	9	0.020	0.004	0.013	0.004	0.985	0.005	0.013	0.985
5/27/2012	10	0.017	0.004	0.014	0.003	0.985	0.006	0.014	0.985
5/27/2012	11	0.014	0.009	0.011	0.002	0.985	0.006	0.019	0.985
5/27/2012	12	0.014	0.008	0.008	0.001	0.985	0.006	0.015	0.985
5/27/2012	13	0.017	0.003	0.008	0.001	0.014	0.022	0.008	0.985
5/27/2012	14	0.010	0.002	0.010	0.002	0.010	0.015	0.005	0.985
5/27/2012	15	0.009	0.003	0.012	0.001	0.006	0.004	0.009	0.985
5/27/2012	16	0.010	0.002	0.017	0.001	0.008	0.019	0.011	0.985
5/27/2012	17	0.010	0.048	0.012	0.003	0.007	0.010	0.011	0.985
5/27/2012	18	0.008	0.017	0.010	0.004	0.008	0.017	0.009	0.985
5/27/2012	19	0.009	0.034	0.006	0.002	0.009	0.016	0.004	0.985
5/27/2012	20	0.009	0.000	0.007	0.020	0.008	0.006	0.005	0.985
5/27/2012	21	0.017	0.058	0.025	0.021	0.045	0.008	0.009	0.985
5/27/2012	22	0.011	0.005	0.017	0.014	0.014	0.016	0.009	0.985
5/27/2012	23	0.015	0.063	0.014	0.027	0.014	0.005	0.010	0.985
5/28/2012	0	0.013	0.011	0.014	0.015	0.011	0.017	0.009	0.985
5/28/2012	1	0.019	0.010	0.020	0.005	0.007	0.005	0.018	0.985
5/28/2012	2	0.008	0.006	0.019	0.003	0.006	0.020	0.008	0.985
5/28/2012	3	0.010	0.044	0.011	0.001	0.007	0.007	0.007	0.985
5/28/2012	4	0.011	0.006	0.010	0.002	0.006	0.008	0.006	0.985
5/28/2012	5	0.019	0.006	0.016	0.004	0.008	0.006	0.016	0.985
5/28/2012	6	0.017	0.116	0.018	0.006	0.016	0.006	0.017	0.985
5/28/2012	7	0.022	0.009	0.014	0.007	0.021	0.006	0.021	0.985
5/28/2012	8	0.017	0.057	0.020	0.009	0.016	0.007	0.018	0.985
5/28/2012	9	0.020	0.006	0.023	0.026	0.016	0.008	0.014	0.985
5/28/2012	10	0.013	0.004	0.017	0.012	0.010	0.010	0.013	0.985
5/28/2012	11	0.011	0.002	0.007	0.022	0.007	0.010	0.011	0.985
5/28/2012	12	0.009	0.003	0.005	0.017	0.006	0.004	0.009	0.985
5/28/2012	13	0.008	0.004	0.003	0.004	0.005	0.004	0.007	0.985
5/28/2012	14	0.006	0.003	0.004	0.001	0.004	0.003	0.006	0.985
5/28/2012	15	0.007	0.002	0.006	0.001	0.005	0.003	0.009	0.985
5/28/2012	16	0.008	0.000	0.007	0.004	0.006	0.005	0.011	0.985
5/28/2012	17	0.009	0.001	0.009	0.004	0.006	0.007	0.009	0.985
5/28/2012	18	0.009	0.004	0.007	0.005	0.005	0.007	0.009	0.985
5/28/2012	19	0.010	0.003	0.007	0.002	0.007	0.004	0.008	0.985
5/28/2012	20	0.012	0.006	0.018	0.001	0.010	0.003	0.007	0.985
5/28/2012	21	0.013	0.008	0.014	0.007	0.011	0.004	0.015	0.985
5/28/2012	22	0.013	0.009	0.019	0.009	0.016	0.006	0.016	0.985
5/28/2012	23	0.014	0.008	0.010	0.006	0.015	0.005	0.015	0.985



DESERT SUNLIGHT SOLAR FARM

TABLE 3 - HOURLY BAM DATA

(Please refer to Table 3 cover page for additional details.)

All values are in units of milligrams per cubic meter.

Date	Hour	North Station		East Station		South Station		West Station	
		PM10	PM2.5	PM10	PM2.5	PM10	PM2.5	PM10	PM2.5
5/29/2012	0	0.013	0.005	0.013	0.005	0.011	0.005	0.016	0.985
5/29/2012	1	0.013	0.004	0.014	0.006	0.020	0.004	0.008	0.985
5/29/2012	2	0.016	0.006	0.019	0.006	0.008	0.006	0.015	0.985
5/29/2012	3	0.017	0.006	0.018	0.004	0.011	0.007	0.008	0.985
5/29/2012	4	0.016	0.005	0.011	0.003	0.010	0.020	0.011	0.985
5/29/2012	5	0.016	0.003	0.022	0.006	0.020	0.004	0.014	0.985
5/29/2012	6	0.017	0.007	0.024	0.007	0.056	0.006	0.018	0.985
5/29/2012	7	0.019	0.011	0.017	0.008	0.045	0.010	0.017	0.985
5/29/2012	8	0.018	0.008	0.014	0.008	0.023	0.012	0.019	0.985
5/29/2012	9	0.033	0.009	0.014	0.006	0.022	0.007	0.012	0.985
5/29/2012	10	0.019	0.009	0.010	0.005	0.014	0.004	0.022	0.985
5/29/2012	11	0.018	0.005	0.010	0.003	0.015	0.007	0.016	0.985
5/29/2012	12	0.015	0.004	0.014	0.003	0.985	0.985	0.017	0.985
5/29/2012	13	0.022	0.002	0.017	0.002	0.008	0.005	0.015	0.985
5/29/2012	14	0.017	0.015	0.015	0.002	0.017	0.006	0.015	0.985
5/29/2012	15	0.021	0.008	0.185	0.006	0.015	0.011	0.017	0.985
5/29/2012	16	0.019	0.006	0.017	0.007	0.015	0.012	0.010	0.985
5/29/2012	17	0.015	0.005	0.016	0.003	0.013	0.008	0.010	0.985
5/29/2012	18	0.014	0.007	0.013	0.003	0.011	0.005	0.008	0.985
5/29/2012	19	0.012	0.006	0.013	0.003	0.018	0.002	0.008	0.985
5/29/2012	20	0.022	0.005	0.017	0.006	0.013	0.006	0.016	0.985
5/29/2012	21	0.024	0.010	0.026	0.008	0.034	0.010	0.023	0.985
5/29/2012	22	0.028	0.012	0.027	0.011	0.029	0.008	0.025	0.985
5/29/2012	23	0.030	0.011	0.029	0.013	0.032	0.009	0.028	0.985
5/30/2012	0	0.028	0.013	0.041	0.011	0.043	0.026	0.036	0.985
5/30/2012	1	0.031	0.010	0.034	0.008	0.032	0.024	0.027	0.985
5/30/2012	2	0.022	0.011	0.035	0.008	0.023	0.010	0.018	0.985
5/30/2012	3	---	---	0.031	0.013	0.024	0.021	0.020	0.985
5/30/2012	4	---	---	0.023	0.013	0.020	0.014	---	---
5/30/2012	5	---	---	0.020	0.011	0.018	0.011	---	---
5/30/2012	6	---	---	---	---	0.039	0.016	---	---
5/30/2012	7	---	---	---	---	0.026	0.027	---	---
5/30/2012	8	0.985	0.985	0.009	0.005	0.021	0.012	0.985	0.985
5/30/2012	9	0.033	-0.002	0.018	0.003	0.036	0.985	0.013	0.985
5/30/2012	10	0.021	0.985	0.014	0.001	0.029	0.985	0.011	0.985
5/30/2012	11	0.985	0.985	0.013	0.003	0.029	0.012	0.010	0.985
5/30/2012	12	0.985	0.985	0.039	0.004	0.013	0.017	0.010	0.985
5/30/2012	13	0.030	0.001	0.010	0.005	0.011	0.006	-0.003	0.985
5/30/2012	14	0.012	0.005	0.007	0.008	0.011	0.009	0.985	0.985
5/30/2012	15	0.015	0.005	0.985	0.005	0.012	0.009	0.000	0.985
5/30/2012	16	0.007	0.006	0.040	0.003	0.985	0.985	0.010	0.985
5/30/2012	17	0.010	0.005	0.006	0.004	0.013	0.985	0.009	0.985
5/30/2012	18	0.010	0.005	0.008	0.002	0.010	0.007	0.011	0.985
5/30/2012	19	0.008	0.003	0.009	0.001	0.003	0.005	0.010	0.985
5/30/2012	20	0.017	0.002	0.008	0.005	0.006	0.006	0.011	0.985
5/30/2012	21	0.011	0.004	0.010	0.008	0.018	0.006	0.010	0.985
5/30/2012	22	0.017	0.004	0.016	0.008	0.019	0.009	0.008	0.985
5/30/2012	23	0.018	0.003	0.024	0.009	0.020	0.012	0.008	0.985



DESERT SUNLIGHT SOLAR FARM

TABLE 3 - HOURLY BAM DATA

(Please refer to Table 3 cover page for additional details.)

All values are in units of milligrams per cubic meter.

Date	Hour	North Station		East Station		South Station		West Station	
		PM10	PM2.5	PM10	PM2.5	PM10	PM2.5	PM10	PM2.5
5/31/2012	0	0.015	0.005	0.016	0.008	0.021	0.174	0.018	0.985
5/31/2012	1	0.014	0.006	0.024	0.006	0.018	0.004	0.012	0.985
5/31/2012	2	0.033	0.007	0.035	0.008	0.035	0.009	0.031	0.985
5/31/2012	3	0.038	0.009	0.039	0.010	0.039	0.013	0.032	0.985
5/31/2012	4	0.034	0.009	0.041	0.012	0.034	0.012	0.039	0.985
5/31/2012	5	0.034	0.009	0.034	0.013	0.032	0.013	0.031	0.985
5/31/2012	6	0.026	0.011	0.064	0.013	0.035	0.012	0.031	0.985
5/31/2012	7	0.032	0.011	0.030	0.011	0.041	0.020	0.021	0.985
5/31/2012	8	0.031	0.010	0.073	0.050	0.074	0.012	0.033	0.985
5/31/2012	9	0.031	0.007	0.037	0.036	0.055	0.012	0.026	0.985
5/31/2012	10	0.034	0.007	0.031	0.034	0.035	0.985	0.027	0.985
5/31/2012	11	0.039	0.007	0.022	0.020	0.033	0.985	0.029	0.985
5/31/2012	12	0.033	0.006	0.017	0.006	0.032	0.011	0.020	0.985
5/31/2012	13	0.014	0.006	0.015	0.006	0.023	0.010	0.015	0.985
5/31/2012	14	0.018	0.007	0.013	0.006	0.023	0.012	0.015	0.985
5/31/2012	15	0.011	0.007	0.090	0.009	0.013	0.011	0.014	0.985
5/31/2012	16	0.010	0.006	0.012	0.024	0.013	0.015	0.014	0.985
5/31/2012	17	0.009	0.005	0.012	0.022	0.011	0.009	0.010	0.985
5/31/2012	18	0.010	0.004	0.014	0.019	0.011	0.008	0.016	0.985
5/31/2012	19	0.013	0.005	0.026	0.021	0.029	0.006	0.009	0.985
5/31/2012	20	0.012	0.004	0.013	0.010	0.011	0.005	0.010	0.985
5/31/2012	21	0.012	0.005	0.039	0.011	0.074	0.005	0.011	0.985
5/31/2012	22	0.013	0.007	0.019	0.008	0.017	0.005	0.012	0.985
5/31/2012	23	0.012	0.008	0.016	0.004	0.013	0.007	0.008	0.985



Table 4

Monitored Constituents

The table below shows the sample dates. Table 4 is on the following page.

Station	Week	Sample Date	Sample ID	Work Order	Duration
North	Week 1	5/1/2012	QFF 12-035	1213139	24
	Week 2	5/8/2012	QFF 12-022	1213742	24
	Week 3	5/16/2012	QFF 12-025	1214258	14.75
	Week 4	5/23/2012	QFF 12-029	1215013	18.35
East	Week 1	5/1/2012	QFF 12-037	1213141	22
	Week 2	5/8/2012	QFF 12-023	1213743	13.5
	Week 3	5/16/2012	QFF 12-027	1214260	24
	Week 4	5/23/2012	QFF 12-030	1215014	17.5
West	Week 1	5/1/2012	QFF 12-036	1213140	24
	Week 2	5/8/2012	QFF 12-021	1213741	24
	Week 3	5/16/2012	QFF 12-026	1214259	24
	Week 4	5/23/2012	QFF 12-031	1215020	22
South	Week 1	5/1/2012	QFF 12-038	1213142	24
	Week 2	5/8/2012	QFF 12-024	1213744	24
	Week 3	5/16/2012	QFF 12-028	1214261	24
	Week 4	5/24/2012	QFF 12-032	1215021	23



Table 4: Monitored Constituents See Footnotes

Analyte	Week	North Station	East Station	West Station	South Station
Elemental Carbon	Week 1	0.23	0.22	0.25	0.16
	Week 2	0.21	0.31	0.29	0.31
	Week 3	0.34	0.46	0.38	0.33
	Week 4	0.56	0.54	1.7	0.65
Arsenic	Week 1	< LOD	< LOD	< LOD	< LOD
	Week 2	< LOD	< LOD	< LOD	< LOD
	Week 3	0.046	< LOD	0.021	< LOD
	Week 4	< LOD	< LOD	0.019	< LOD
Beryllium	Week 1	< LOD	< LOD	< LOD	< LOD
	Week 2	< LOD	< LOD	< LOD	< LOD
	Week 3	< LOD	< LOD	< LOD	< LOD
	Week 4	0.00025	0.00024	0.00025	0.00016
Cadmium	Week 1	< LOD	< LOD	< LOD	< LOD
	Week 2	< LOD	< LOD	< LOD	< LOD
	Week 3	< LOD	< LOD	< LOD	< LOD
	Week 4	< LOD	< LOD	< LOD	< LOD
Copper	Week 1	0.013	0.014	0.017	0.022
	Week 2	0.015	0.017	0.046	0.041
	Week 3	0.02	0.032	0.037	0.042
	Week 4	0.027	0.025	0.048	0.027
Lead	Week 1	< LOD	< LOD	< LOD	< LOD
	Week 2	< LOD	< LOD	< LOD	< LOD
	Week 3	< LOD	< LOD	< LOD	0.0087
	Week 4	0.014	0.012	0.011	0.011
Manganese	Week 1	0.02	0.025	0.026	0.031
	Week 2	0.021	0.029	0.021	0.028
	Week 3	0.036	0.034	0.033	0.034
	Week 4	0.16	0.15	0.17	0.09
Nickel	Week 1	0.00088	0.0016	< LOD	0.0015
	Week 2	0.001	< LOD	0.00084	< LOD
	Week 3	0.0023	0.0016	0.00086	0.0014
	Week 4	0.0064	0.0089	0.0073	0.0023
Selenium	Week 1	< LOD	< LOD	< LOD	< LOD
	Week 2	< LOD	< LOD	< LOD	< LOD
	Week 3	< LOD	< LOD	0.021	< LOD
	Week 4	< LOD	< LOD	< LOD	< LOD

Note 1: All values are in units of micrograms per cubic meter.

Note 2: < LOD = Less than Limit of Detection (LOD).

Note 3: Sample dates are shown in the cover page for this table.

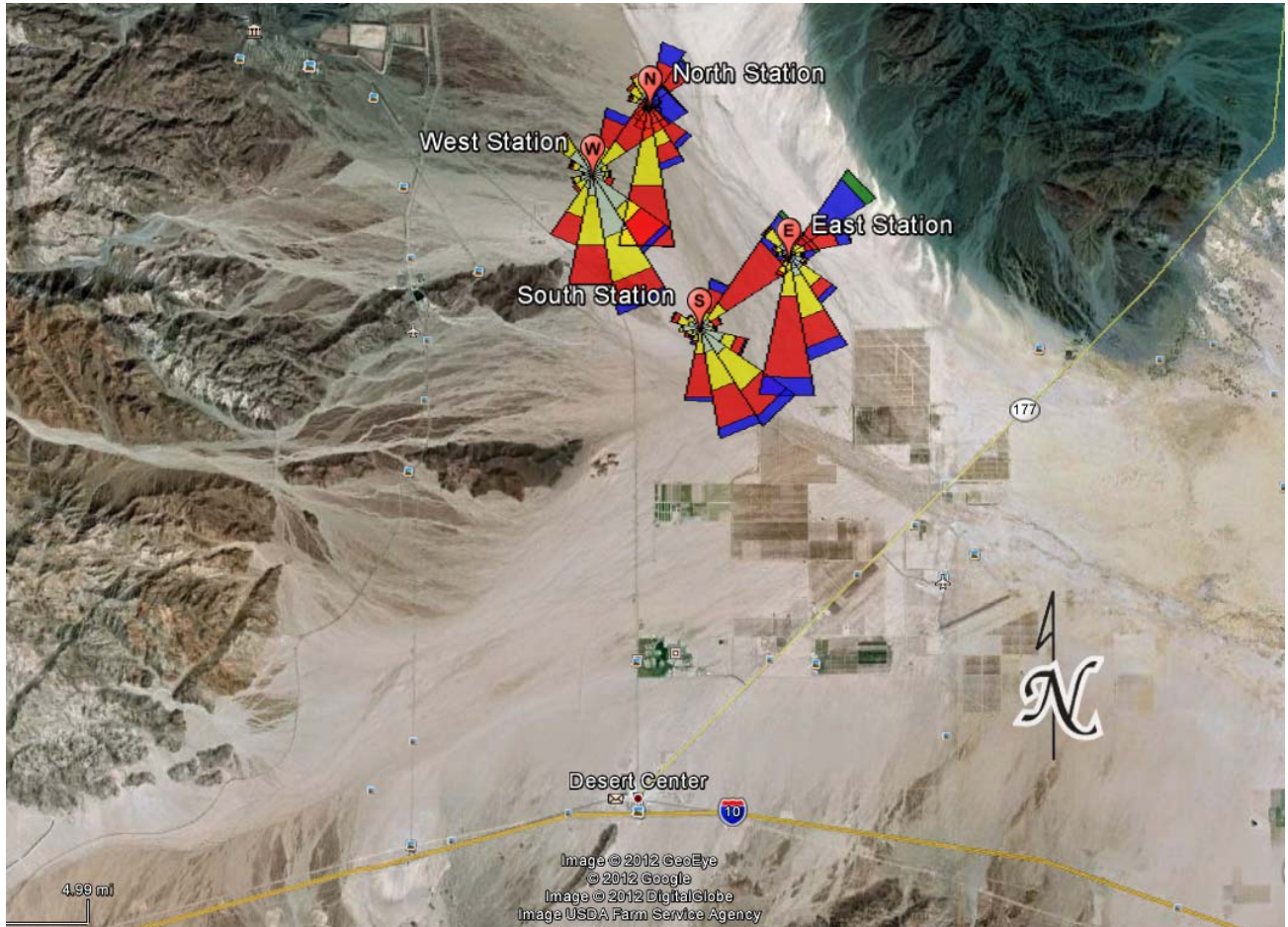


Figure 1: Meteorological Data Summary

This report uses the unit vector average method of calculating average wind headings. This method is more useful for weather data monitoring than methods such as the direct scalar average approach. Previous versions of this report have been updated to reflect the use of this method.

The triangles in Figure 1 indicate the direction the wind was blowing **to** rather than **from**. The table below provides a brief explanation of the various wind speed classes.

Color	Wind Speed (knots)
Light blue (Not Shown In Figure 1)	≥ 22 knots
Dark green	17 – 21 knots
Dark blue	11 – 17 knots
Red	7 – 11 knots
Yellow	4 – 7 knots
Light gray/green	1 – 4 knots