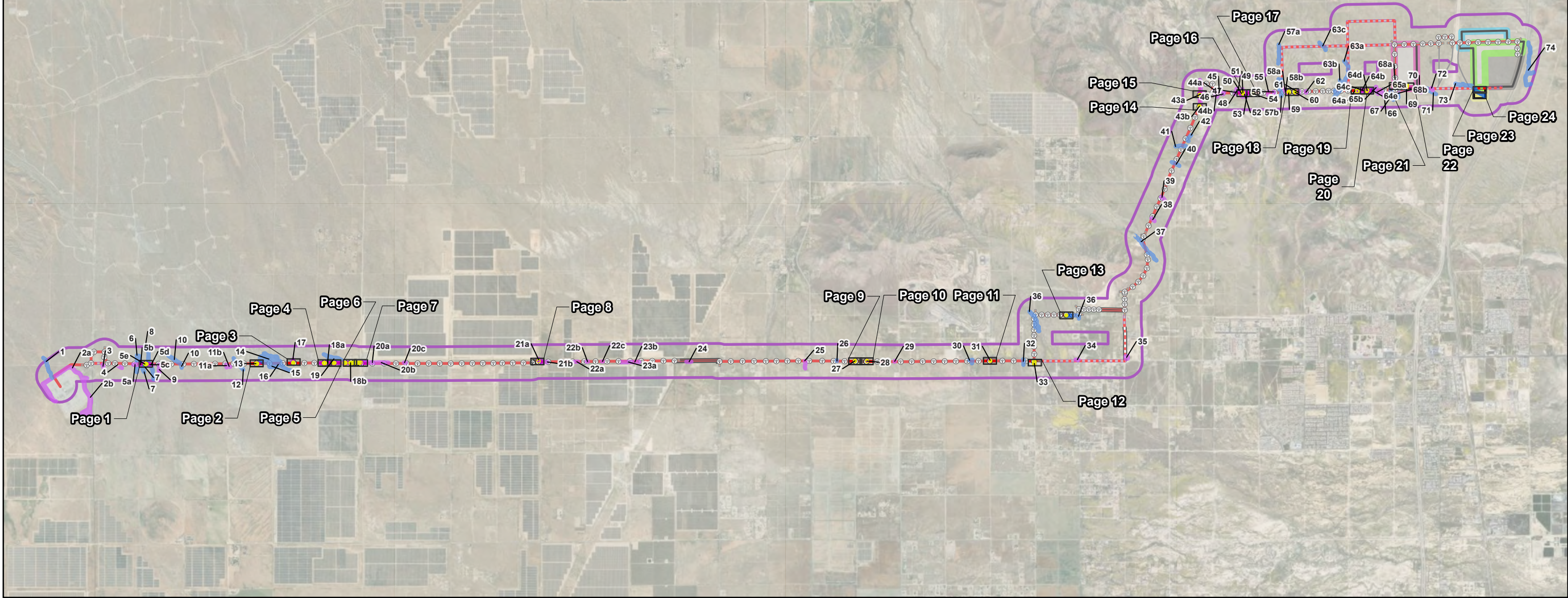
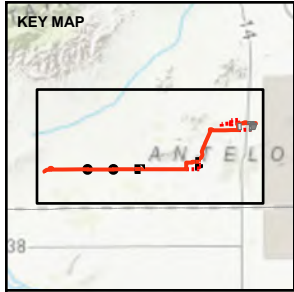


DOCKETED	
Docket Number:	21-AFC-02
Project Title:	Willow Rock Energy Storage Center
TN #:	262243
Document Title:	Willow Rock Jurisdictional Drainages Additional Information Attachment
Description:	N/A
Filer:	Kathryn Stevens
Organization:	WSP USA Inc.
Submitter Role:	Applicant Consultant
Submission Date:	3/19/2025 3:54:40 PM
Docketed Date:	3/19/2025

ATTACHMENT 1

**Jurisdictional Delineation Map Book
– Temporary Impacts**



- LEGEND**
- Mapbook Page Extent**
- Mapbook Page Extent
- Jurisdictional Drainages**
- Potential State Jurisdictional Drainages
 - Potential Non-Jurisdictional Drainages
 - Temporary Impacts on Drainage Features
- Project Features**
- Proposed Transmission Line Pole Locations
 - Proposed Transmission Pole Construction Access Sites
 - Proposed Pull and Tensioning Sites
- Potential Use Access Roads**
- Existing Unimproved Roads
 - Proposed Access Roads
- Proposed Transmission Line**
- Preferred Route, Aboveground
 - Preferred Route, Underground
 - Preferred Route Option, Aboveground
 - Preferred Route Option, Underground
- Project Components**
- Project ROW
 - WRESC Site
 - P1
 - P2 North
 - P2 South
 - Villa Haines
 - Project Boundary
 - 1,000 ft Buffer Around Project Parcels and Transmission Line ROW



CLIENT
GEM A-CAES LLC

CONSULTANT



YYYY-MM-DD 2025-03-18
DESIGNED MK
PREPARED KO
REVIEWED DS
APPROVED JP

NOTE(S)
1. PROJECT ROW IS 62.5 FT ON EITHER SIDE OF THE PROPOSED TRANSMISSION LINE ROUTE.

REFERENCE(S)
1. JURISDICTIONAL DELINEATION DATA: WSP, 2023-2024
2. COORDINATE SYSTEM: NAD 1983 STATEPLANE CALIFORNIA V FIPS 0405 FEET
3. MAP SERVICE LAYER CREDITS: WORLD TOPOGRAPHIC MAP: ESRI, HERE, GARMIN, FAO, USGS, NGA, EPA, NPS
WORLD IMAGERY: EARTHSTAR GEOGRAPHICS

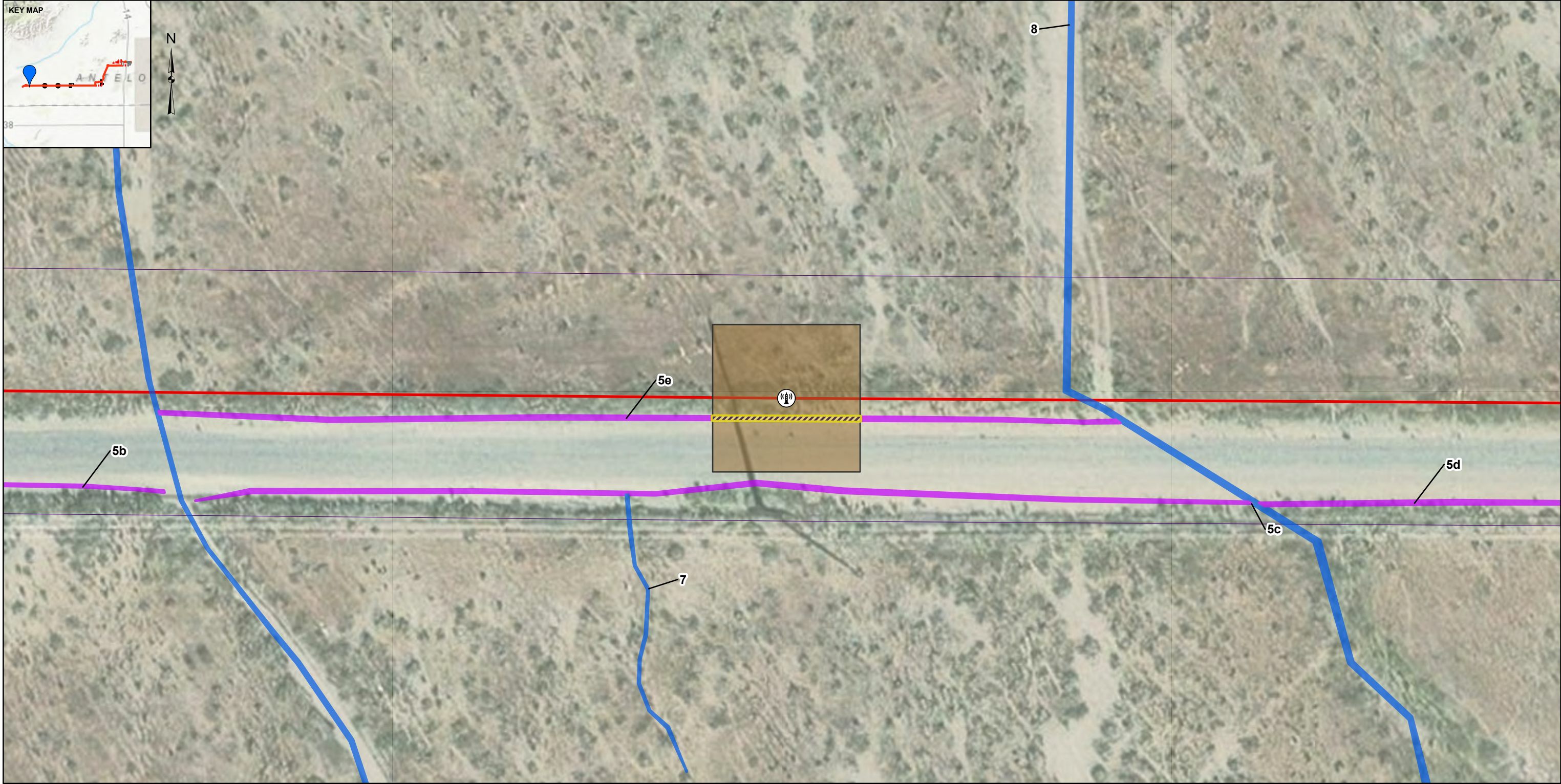
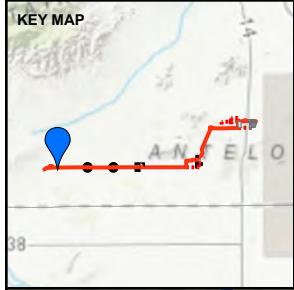
PROJECT
WILLOW ROCK ENERGY STORAGE CENTER
JURISDICTIONAL DELINEATION FOCUSED SURVEY

TITLE
JURISDICTIONAL DELINEATION OVERVIEW MAP - TEMPORARY IMPACTS

PROJECT NO. US0029687.8167 PHASE 200 REV. 0 FIGURE 1

PATH: G:\Hydro\Aerial\11_0315TEMP\2025_03_10_VO_IDImpacts_UpdatedReport\UD_Impacts_VO_03102025.apr PRINTED: 3/18/2025 at 1:24 PM BY: USKO127008

IF THIS MEASUREMENT DOES NOT MATCH WHAT IS SHOWN, THE SHEET SIZE HAS BEEN MODIFIED FROM: ANSI B



LEGEND

- Jurisdictional Drainages**

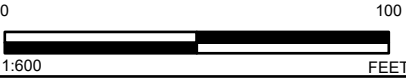
 - Potential State Jurisdictional Drainages
 - Potential Non-Jurisdictional Drainages
 - Temporary Impacts on Drainage Features
- Project Features**

 - Proposed Transmission Line Pole Locations
- Proposed Transmission Line**

 - Preferred Route, Aboveground
 - Project ROW
- Proposed Transmission Pole Construction and Access Sites

NOTE(S)
1. PROJECT ROW IS 62.5 FT ON EITHER SIDE OF THE PROPOSED TRANSMISSION LINE ROUTE.

REFERENCE(S)
1. JURISDICTIONAL DELINEATION DATA: WSP, 2023-2024
2. COORDINATE SYSTEM: NAD 1983 STATEPLANE CALIFORNIA V FIPS 0405 FEET
3. MAP SERVICE LAYER CREDITS: WORLD TOPOGRAPHIC MAP: ESRI, HERE, GARMIN, FAO, USGS, NGA, EPA, NPS
WORLD IMAGERY: MAXAR, MICROSOFT



CLIENT
GEM A-CAES LLC

CONSULTANT

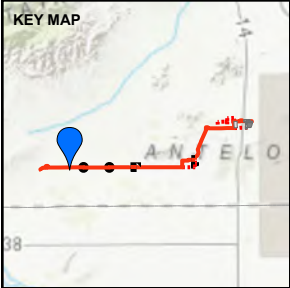


YYYY-MM-DD	2025-03-18
DESIGNED	MK
PREPARED	KO
REVIEWED	DS
APPROVED	JP

PROJECT
WILLOW ROCK ENERGY STORAGE CENTER
JURISDICTIONAL DELINEATION FOCUSED SURVEY

TITLE
JURISDICTIONAL DELINEATION MAP BOOK - TEMPORARY IMPACTS

PROJECT NO.	PHASE	REV.	FIGURE
US0029687.8167	200	0	1-1



LEGEND

- Jurisdictional Drainages**
- Potential State Jurisdictional Drainages
 - Potential Non-Jurisdictional Drainages
 - Temporary Impacts on Drainage Features
- Proposed Transmission Line**
- Preferred Route, Aboveground
 - Project ROW
- Project Features**
- Proposed Transmission Line Pole Locations
 - Proposed Transmission Pole Construction and Access Sites

NOTE(S)
1. PROJECT ROW IS 62.5 FT ON EITHER SIDE OF THE PROPOSED TRANSMISSION LINE ROUTE.

REFERENCE(S)
1. JURISDICTIONAL DELINEATION DATA: WSP, 2023-2024
2. COORDINATE SYSTEM: NAD 1983 STATEPLANE CALIFORNIA V FIPS 0405 FEET
3. MAP SERVICE LAYER CREDITS: WORLD TOPOGRAPHIC MAP: ESRI, HERE, GARMIN, FAO, USGS, NGA, EPA, NPS
WORLD IMAGERY: MAXAR, MICROSOFT

CLIENT
GEM A-CAES LLC

CONSULTANT

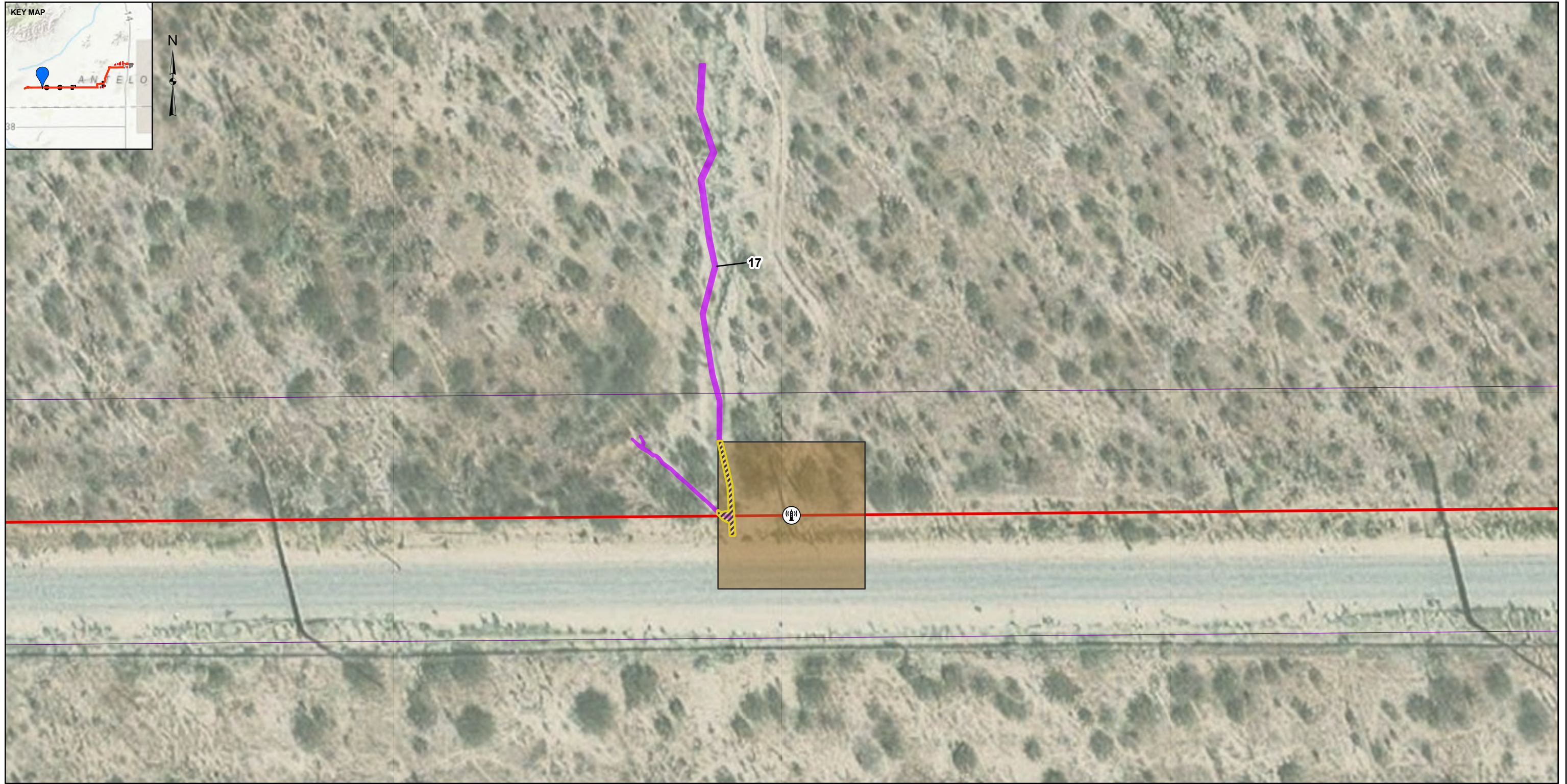
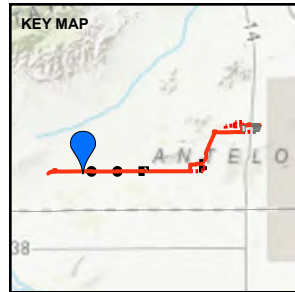


YYYY-MM-DD 2025-03-18
DESIGNED MK
PREPARED KO
REVIEWED DS
APPROVED JP

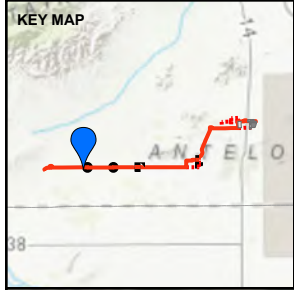
PROJECT
WILLOW ROCK ENERGY STORAGE CENTER
JURISDICTIONAL DELINEATION FOCUSED SURVEY

TITLE
JURISDICTIONAL DELINEATION MAP BOOK - TEMPORARY IMPACTS

PROJECT NO. PHASE REV. FIGURE
US0029687.8167 200 0 1-2



PROJECT NO.	PHASE	REV.	FIGURE
US0029687.8167	200	0	1-3



LEGEND

Jurisdictional Drainages

- Potential State Jurisdictional Drainages
- Potential Non-Jurisdictional Drainages
- Temporary Impacts on Drainage Features

Project Features

- Proposed Transmission Line Pole Locations

- Proposed Transmission Pole Construction and Access Sites

Proposed Transmission Line

- Preferred Route, Aboveground
- Project ROW

NOTE(S)

- PROJECT ROW IS 62.5 FT ON EITHER SIDE OF THE PROPOSED TRANSMISSION LINE ROUTE.

REFERENCE(S)

- JURISDICTIONAL DELINEATION DATA: WSP, 2023-2024
 - COORDINATE SYSTEM: NAD 1983 STATEPLANE CALIFORNIA V FIPS 0405 FEET
 - MAP SERVICE LAYER CREDITS: WORLD TOPOGRAPHIC MAP: ESRI, HERE, GARMIN, FAO, USGS, NGA, EPA, NPS
- WORLD IMAGERY: MAXAR, MICROSOFT

CLIENT
GEM A-CAES LLC

CONSULTANT



YYYY-MM-DD 2025-03-18

DESIGNED MK

PREPARED KO

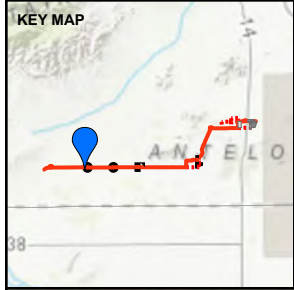
REVIEWED DS

APPROVED JP

PROJECT
WILLOW ROCK ENERGY STORAGE CENTER
JURISDICTIONAL DELINEATION FOCUSED SURVEY

TITLE
JURISDICTIONAL DELINEATION MAP BOOK - TEMPORARY IMPACTS

PROJECT NO.	PHASE	REV.	FIGURE
US0029687.8167	200	0	1-4



LEGEND

- Jurisdictional Drainages**
- Potential State Jurisdictional Drainages
 - Potential Non-Jurisdictional Drainages
 - Temporary Impacts on Drainage Features
- Proposed Transmission Line**
- Preferred Route, Aboveground
 - Project ROW
- Project Features**
- Proposed Transmission Line Pole Locations
 - Proposed Transmission Pole Construction and Access Sites

NOTE(S)
1. PROJECT ROW IS 62.5 FT ON EITHER SIDE OF THE PROPOSED TRANSMISSION LINE ROUTE.

REFERENCE(S)
1. JURISDICTIONAL DELINEATION DATA: WSP, 2023, 2024
2. COORDINATE SYSTEM: NAD 1983 STATEPLANE CALIFORNIA V FIPS 0405 FEET
3. MAP SERVICE LAYER CREDITS: WORLD TOPOGRAPHIC MAP: ESRI, HERE, GARMIN, FAO, NOAA, USGS, EPA, NPS
WORLD IMAGERY: MAXAR, MICROSOFT

CLIENT
GEM A-CAES LLC

CONSULTANT

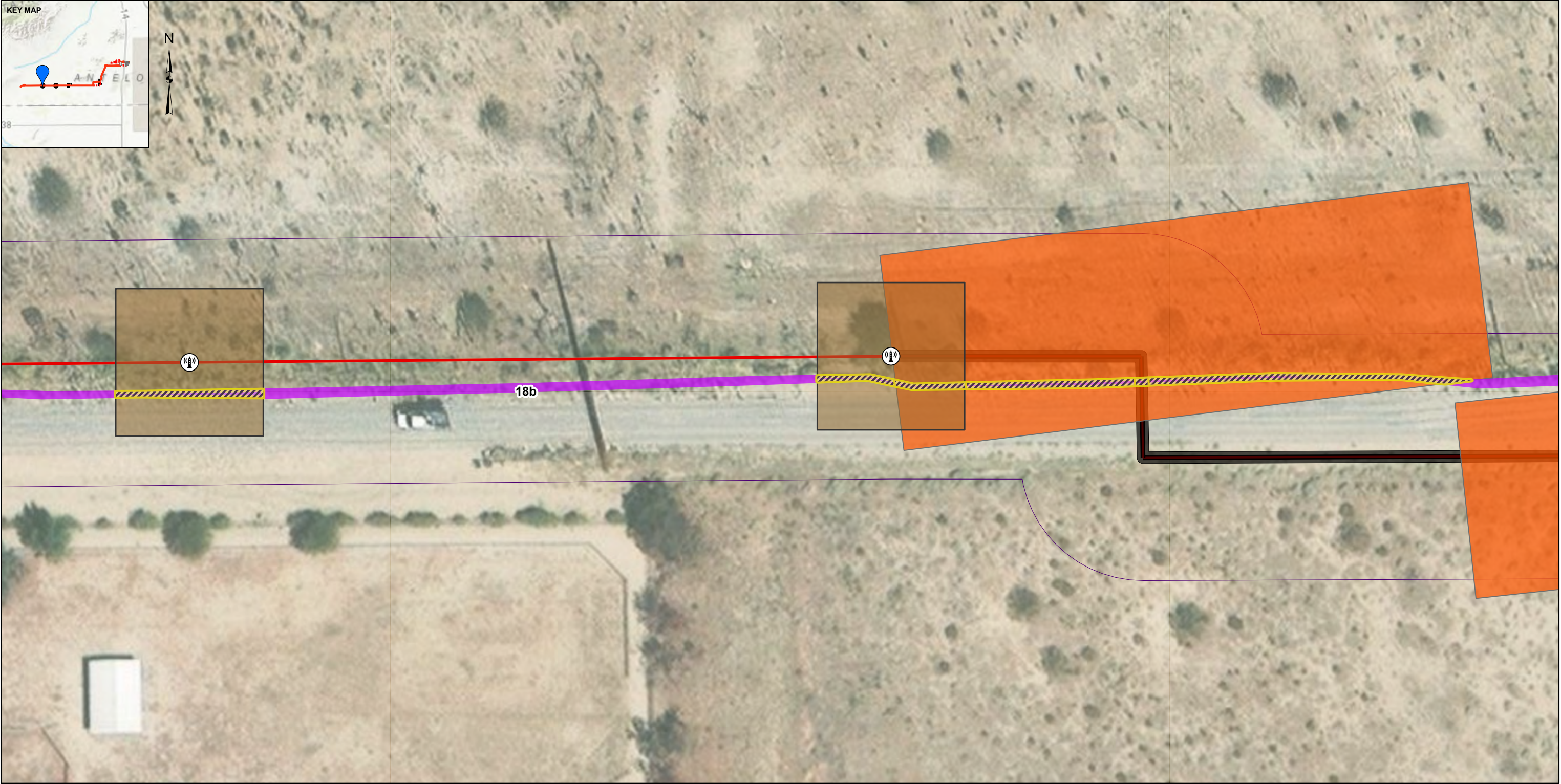
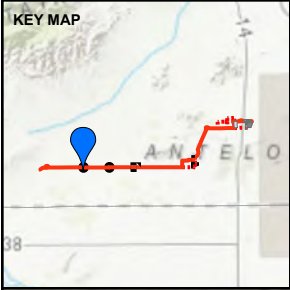


YYYY-MM-DD	2025-03-18
DESIGNED	MK
PREPARED	KO
REVIEWED	DS
APPROVED	JP

PROJECT
WILLOW ROCK ENERGY STORAGE CENTER
JURISDICTIONAL DELINEATION FOCUSED SURVEY

TITLE
JURISDICTIONAL DELINEATION MAP BOOK - TEMPORARY IMPACTS

PROJECT NO.	PHASE	REV.	FIGURE
US0029687.8167	200	0	1-5



LEGEND

- Jurisdictional Drainages**

 - Potential Non-Jurisdictional Drainages
 - Temporary Impacts on Drainage Features
- Project Features**

 - Proposed Transmission Line Pole Locations
 - Proposed Transmission Pole Construction and Access Sites
- Proposed Transmission Line**

 - Preferred Route, Aboveground
 - Preferred Route, Underground
- Proposed Pull and Tensioning Sites**

 - Proposed Underground Transmission Line Sites
- Project ROW**

 - Project ROW

NOTE(S)
1. PROJECT ROW IS 62.5 FT ON EITHER SIDE OF THE PROPOSED TRANSMISSION LINE ROUTE.

REFERENCE(S)
1. JURISDICTIONAL DELINEATION DATA: WSP, 2023, 2024
2. COORDINATE SYSTEM: NAD 1983 STATEPLANE CALIFORNIA V FIPS 0405 FEET
3. MAP SERVICE LAYER CREDITS: WORLD TOPOGRAPHIC MAP: ESRI, HERE, GARMIN, FAO, NOAA, USGS, EPA, NPS
WORLD IMAGERY: MAXAR, MICROSOFT

CLIENT
GEM A-CAES LLC

CONSULTANT

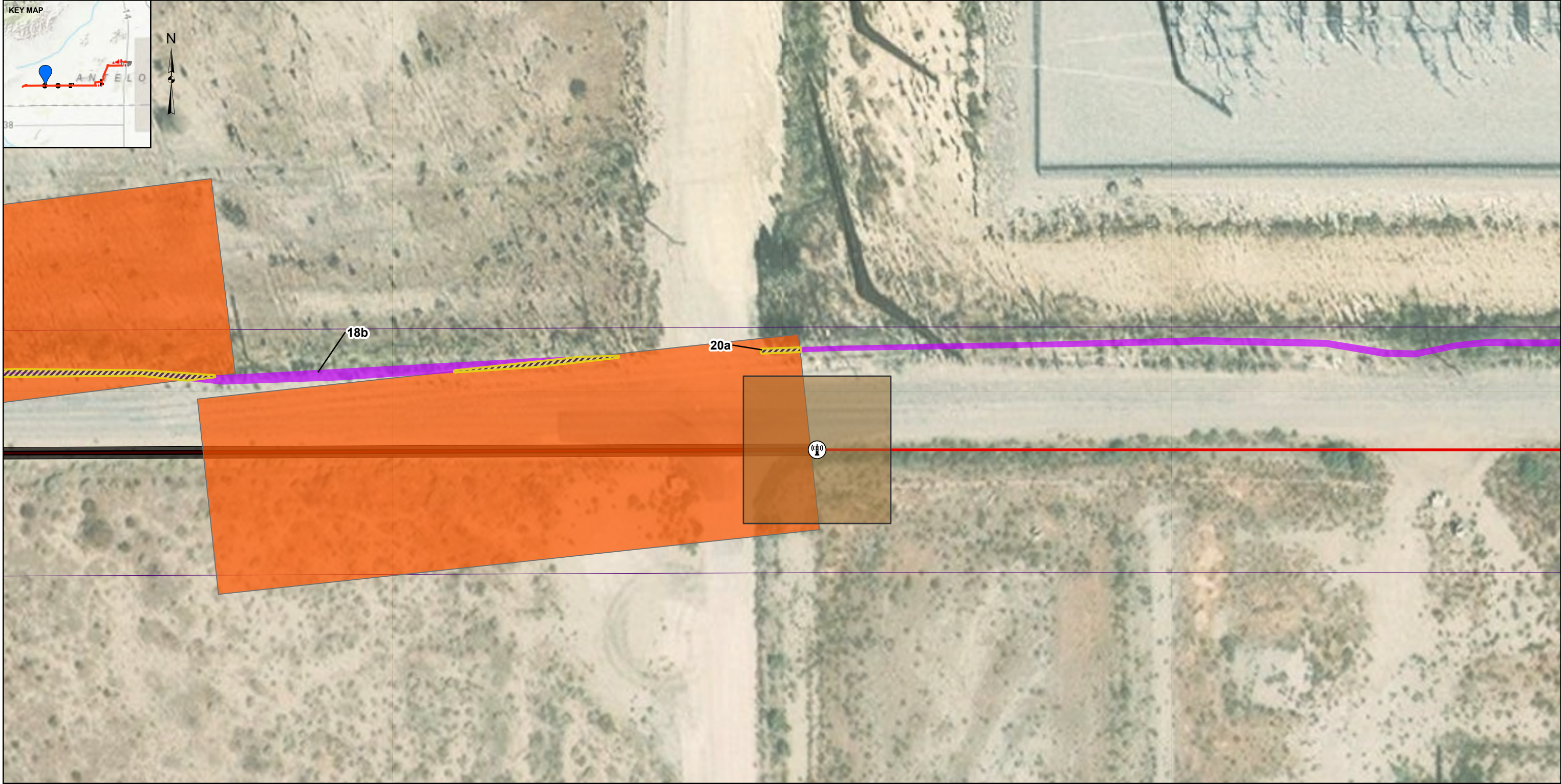
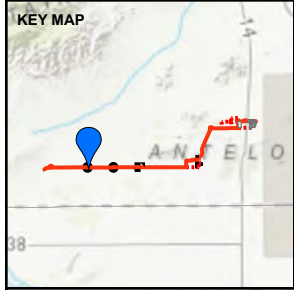


YYYY-MM-DD	2025-03-18
DESIGNED	MK
PREPARED	KO
REVIEWED	DS
APPROVED	JP

PROJECT
WILLOW ROCK ENERGY STORAGE CENTER
JURISDICTIONAL DELINEATION FOCUSED SURVEY

TITLE
JURISDICTIONAL DELINEATION MAP BOOK - TEMPORARY IMPACTS

PROJECT NO.	PHASE	REV.	FIGURE
US0029687.8167	200	0	1-6



LEGEND

- Jurisdictional Drainages**

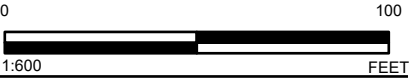
 - Potential Non-Jurisdictional Drainages
 - Temporary Impacts on Drainage Features
- Proposed Transmission Line**

 - Proposed Pull and Tensioning Sites
 - Proposed Underground Transmission Line Sites
 - Preferred Route, Aboveground
 - Preferred Route, Underground
 - Project ROW
- Project Features**

 - Proposed Transmission Line Pole Locations
 - Proposed Transmission Pole Construction and Access Sites

NOTE(S)
1. PROJECT ROW IS 62.5 FT ON EITHER SIDE OF THE PROPOSED TRANSMISSION LINE ROUTE.

REFERENCE(S)
1. JURISDICTIONAL DELINEATION DATA: WSP, 2023-2024
2. COORDINATE SYSTEM: NAD 1983 STATEPLANE CALIFORNIA V FIPS 0405 FEET
3. MAP SERVICE LAYER CREDITS: WORLD TOPOGRAPHIC MAP: ESRI, HERE, GARMIN, FAO, NOAA, USGS, EPA, NPS
WORLD IMAGERY: MAXAR, MICROSOFT



CLIENT
GEM A-CAES LLC

CONSULTANT

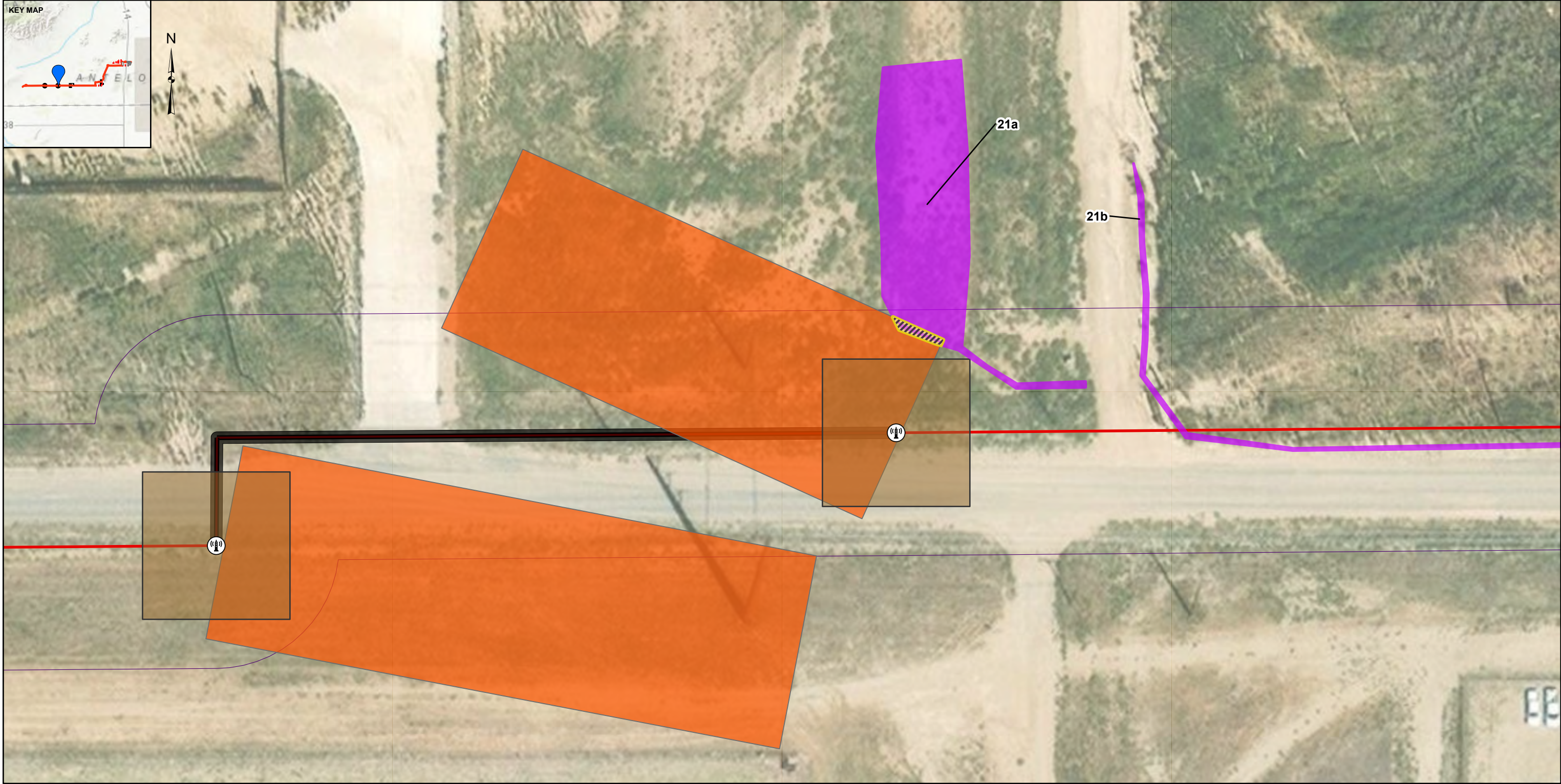


YYYY-MM-DD	2025-03-18
DESIGNED	MK
PREPARED	KO
REVIEWED	DS
APPROVED	JP

PROJECT
WILLOW ROCK ENERGY STORAGE CENTER
JURISDICTIONAL DELINEATION FOCUSED SURVEY

TITLE
JURISDICTIONAL DELINEATION MAP BOOK - TEMPORARY IMPACTS

PROJECT NO.	PHASE	REV.	FIGURE
US0029687.8167	200	0	1-7



LEGEND

- Jurisdictional Drainages**

 - Potential Non-Jurisdictional Drainages
 - Temporary Impacts on Drainage Features
- Project Features**

 - Proposed Transmission Line Pole Locations
 - Proposed Transmission Pole Construction and Access Sites
- Proposed Transmission Line**

 - Preferred Route, Aboveground
 - Preferred Route, Underground
- Proposed Pull and Tensioning Sites**

 - Proposed Underground Transmission Line Sites
- Project ROW**

 - Project ROW

NOTE(S)
1. PROJECT ROW IS 62.5 FT ON EITHER SIDE OF THE PROPOSED TRANSMISSION LINE ROUTE.

REFERENCE(S)
1. JURISDICTIONAL DELINEATION DATA: WSP, 2023, 2024
2. COORDINATE SYSTEM: NAD 1983 STATEPLANE CALIFORNIA V FIPS 0405 FEET
3. MAP SERVICE LAYER CREDITS: WORLD TOPOGRAPHIC MAP: ESRI, HERE, GARMIN, FAO, NOAA, USGS, EPA, NPS
WORLD IMAGERY: MAXAR, MICROSOFT

CLIENT
GEM A-CAES LLC

CONSULTANT

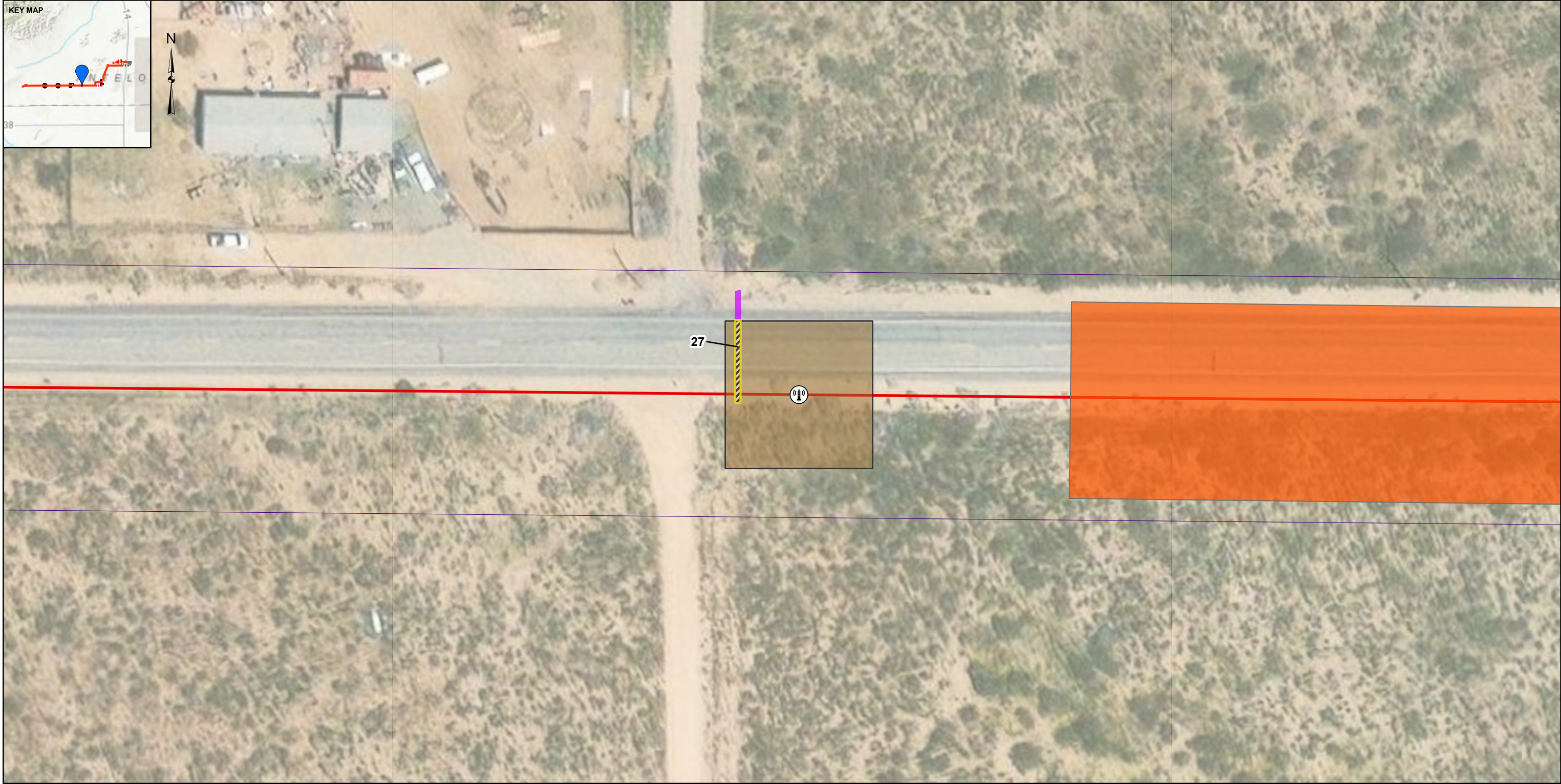
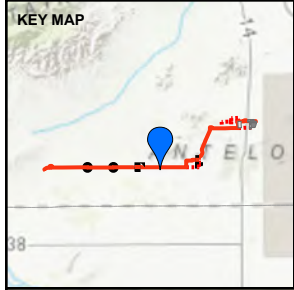


YYYY-MM-DD	2025-03-18
DESIGNED	MK
PREPARED	KO
REVIEWED	DS
APPROVED	JP

PROJECT
WILLOW ROCK ENERGY STORAGE CENTER
JURISDICTIONAL DELINEATION FOCUSED SURVEY

TITLE
JURISDICTIONAL DELINEATION MAP BOOK - TEMPORARY IMPACTS

PROJECT NO.	PHASE	REV.	FIGURE
US0029687.8167	200	0	1-8



LEGEND

- Jurisdictional Drainages**
- Potential Non-Jurisdictional Drainages
 - Temporary Impacts on Drainage Features
- Project Features**
- Proposed Transmission Line Pole Locations
- Proposed Transmission Line**
- Preferred Route, Aboveground
 - Project ROW
- Proposed Transmission Pole Construction and Access Sites**
- Proposed Pull and Tensioning Sites

NOTE(S)

1. PROJECT ROW IS 62.5 FT ON EITHER SIDE OF THE PROPOSED TRANSMISSION LINE ROUTE.

REFERENCE(S)

1. JURISDICTIONAL DELINEATION DATA: WSP, 2023, 2024
2. COORDINATE SYSTEM: NAD 1983 STATEPLANE CALIFORNIA V FIPS 0405 FEET
3. MAP SERVICE LAYER CREDITS: WORLD TOPOGRAPHIC MAP: ESRI, HERE, GARMIN, FAO, NOAA, USGS, EPA, NPS
WORLD IMAGERY: MAXAR, MICROSOFT

CLIENT
GEM A-CAES LLC

CONSULTANT

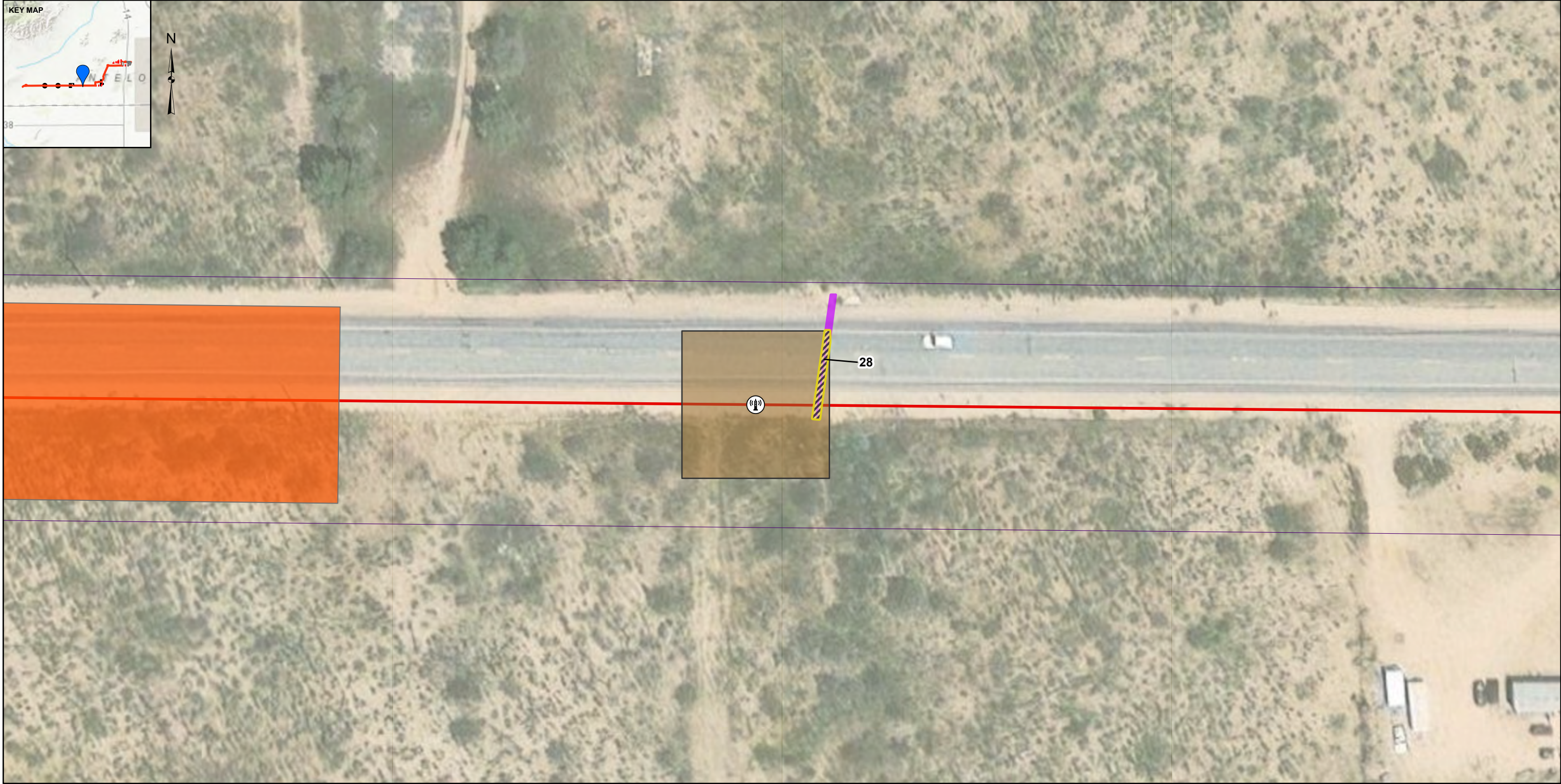
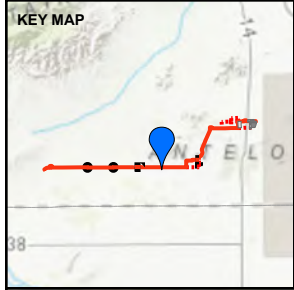


YYYY-MM-DD	2025-03-18
DESIGNED	MK
PREPARED	KO
REVIEWED	DS
APPROVED	JP

PROJECT
WILLOW ROCK ENERGY STORAGE CENTER
JURISDICTIONAL DELINEATION FOCUSED SURVEY

TITLE
JURISDICTIONAL DELINEATION MAP BOOK - TEMPORARY IMPACTS

PROJECT NO.	PHASE	REV.	FIGURE
US0029687.8167	200	0	1-9



LEGEND

- Jurisdictional Drainages**

 - Potential Non-Jurisdictional Drainages
 - Temporary Impacts on Drainage Features
- Proposed Transmission Line**

 - Preferred Route, Aboveground
 - Project ROW
- Proposed Transmission Pole Construction and Access Sites**

 - Proposed Pull and Tensioning Sites
- Proposed Transmission Line Pole Locations**

 - Proposed Transmission Line Pole Locations

NOTE(S)
1. PROJECT ROW IS 62.5 FT ON EITHER SIDE OF THE PROPOSED TRANSMISSION LINE ROUTE.

REFERENCE(S)
1. JURISDICTIONAL DELINEATION DATA: WSP, 2023, 2024
2. COORDINATE SYSTEM: NAD 1983 STATEPLANE CALIFORNIA V FIPS 0405 FEET
3. MAP SERVICE LAYER CREDITS: WORLD TOPOGRAPHIC MAP: ESRI, HERE, GARMIN, FAO, NOAA, USGS, EPA, NPS
WORLD IMAGERY: MAXAR, MICROSOFT

CLIENT
GEM A-CAES LLC

CONSULTANT



YYYY-MM-DD	2025-03-18
DESIGNED	MK
PREPARED	KO
REVIEWED	DS
APPROVED	JP

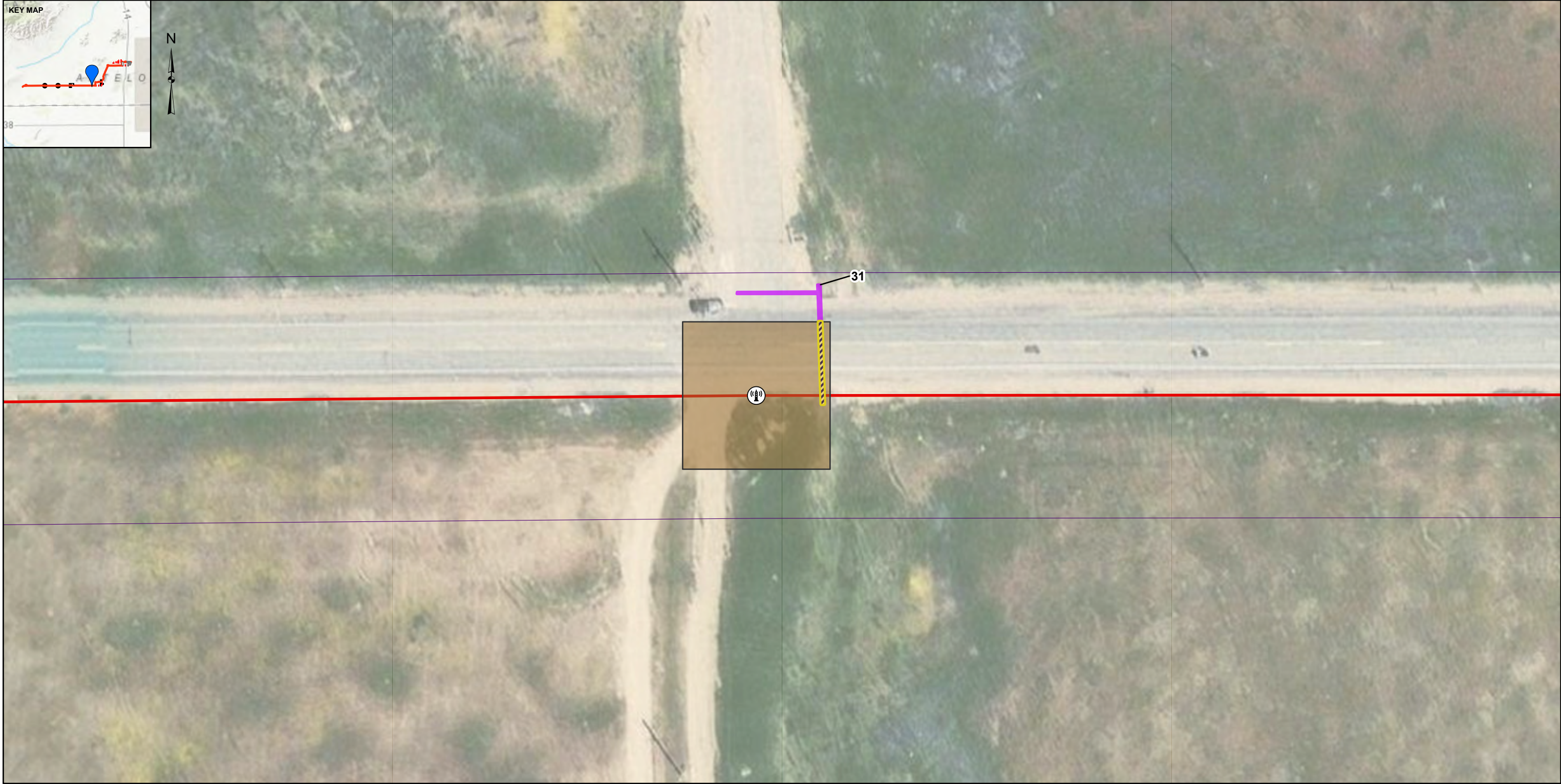
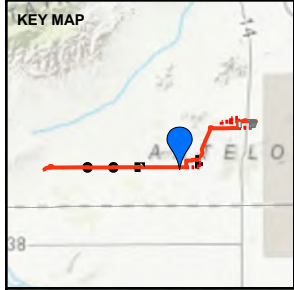
PROJECT
WILLOW ROCK ENERGY STORAGE CENTER
JURISDICTIONAL DELINEATION FOCUSED SURVEY

TITLE
JURISDICTIONAL DELINEATION MAP BOOK - TEMPORARY IMPACTS

PROJECT NO.	PHASE	REV.	FIGURE
US0029687.8167	200	0	1-10

PATH: G:\Hydro\Aerial\11_GIS\TEMP\2025_03_10_VO_JD\Impacts_Updated\Report\UD_Impacts_VO_03102025.aprx PRINTED: 3/18/2025 at 1:25 PM BY: USKO127008

1 in IF THIS MEASUREMENT DOES NOT MATCH WHAT IS SHOWN, THE SHEET SIZE HAS BEEN MODIFIED FROM: ANSI B



LEGEND

- Jurisdictional Drainages**

 - Potential Non-Jurisdictional Drainages
 - Temporary Impacts on Drainage Features
- Proposed Transmission Line**

 - Preferred Route, Aboveground
 - Project ROW
- Project Features**

 - Proposed Transmission Line Pole Locations
- Proposed Transmission Pole Construction and Access Sites

NOTE(S)
1. PROJECT ROW IS 62.5 FT ON EITHER SIDE OF THE PROPOSED TRANSMISSION LINE ROUTE.

REFERENCE(S)
1. JURISDICTIONAL DELINEATION DATA: WSP, 2023-2024
2. COORDINATE SYSTEM: NAD 1983 STATEPLANE CALIFORNIA V FIPS 0405 FEET
3. MAP SERVICE LAYER CREDITS: WORLD TOPOGRAPHIC MAP: ESRI, HERE, GARMIN, FAO, NOAA, USGS, EPA, NPS
WORLD IMAGERY: MAXAR, MICROSOFT



CLIENT
GEM A-CAES LLC

CONSULTANT

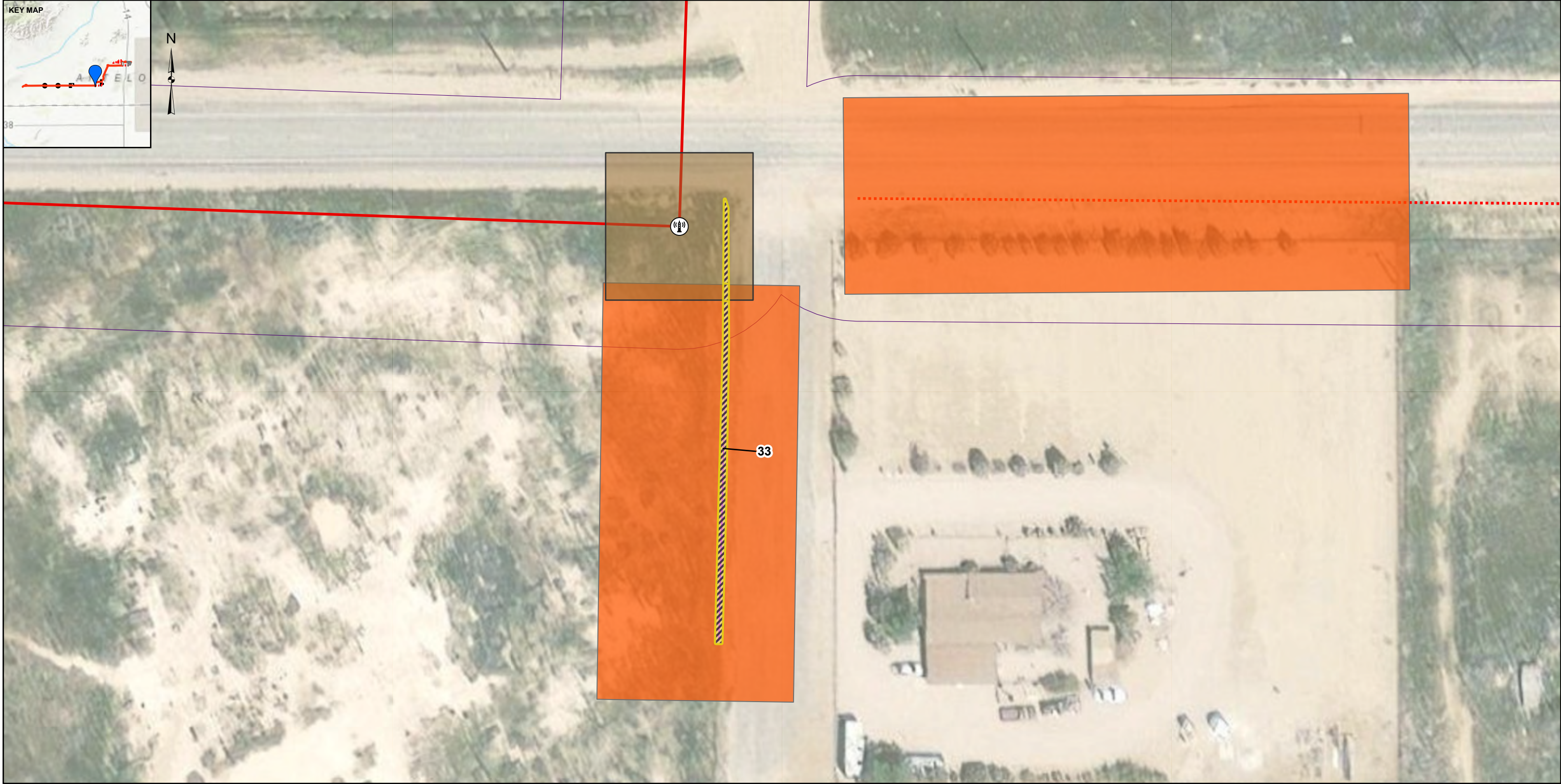


YYYY-MM-DD	2025-03-18
DESIGNED	MK
PREPARED	KO
REVIEWED	DS
APPROVED	JP

PROJECT
WILLOW ROCK ENERGY STORAGE CENTER
JURISDICTIONAL DELINEATION FOCUSED SURVEY

TITLE
JURISDICTIONAL DELINEATION MAP BOOK - TEMPORARY IMPACTS

PROJECT NO.	PHASE	REV.	FIGURE
US0029687.8167	200	0	1-11



LEGEND

Jurisdictional Drainages

Potential Non-Jurisdictional Drainages

Temporary Impacts on Drainage Features

Proposed Transmission Line Pole Locations

Proposed Transmission Pole Construction and Access Sites

Proposed Pull and Tensioning Sites

Proposed Transmission Line

Preferred Route, Aboveground

Preferred Route Option, Aboveground

Project ROW

CLIENT

GEM A-CAES LLC

CONSULTANT

wsp

YYYY-MM-DD

2025-03-18

DESIGNED

MK

PREPARED

KO

REVIEWED

DS

APPROVED

JP

PROJECT

WILLOW ROCK ENERGY STORAGE CENTER

JURISDICTIONAL DELINEATION FOCUSED SURVEY

TITLE

JURISDICTIONAL DELINEATION MAP BOOK - TEMPORARY IMPACTS

PROJECT NO.

US0029687.8167

PHASE

200

REV.

0

FIGURE

1-12

NOTE(S)

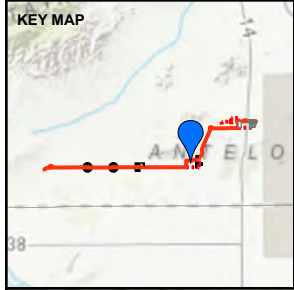
1. PROJECT ROW IS 62.5 FT ON EITHER SIDE OF THE PROPOSED TRANSMISSION LINE ROUTE.

REFERENCE(S)

1. JURISDICTIONAL DELINEATION DATA: WSP, 2023, 2024
2. COORDINATE SYSTEM: NAD 1983 STATEPLANE CALIFORNIA V FIPS 0405 FEET
3. MAP SERVICE LAYER CREDITS: WORLD TOPOGRAPHIC MAP: ESRI, HERE, GARMIN, FAO, NOAA, USGS, EPA, NPS
WORLD IMAGERY: MAXAR, MICROSOFT

PATH: G:\Hydro\Aerial\11_0315TEMP\2025_03_10_VO_ID\Impacts_Updated\Report\UD_Impacts_VO_03102025.aprx PRINTED: 3/18/2025 at 1:25 PM BY: USKO127008

IF THIS MEASUREMENT DOES NOT MATCH WHAT IS SHOWN, THE SHEET SIZE HAS BEEN MODIFIED FROM: ANSI B



LEGEND

- Jurisdictional Drainages**

 - Potential State Jurisdictional Drainages
 - Temporary Impacts on Drainage Features
- Project Features**

 - Proposed Transmission Line Pole Locations
- Proposed Transmission Line**

 - Preferred Route, Aboveground
 - Project ROW
- Proposed Transmission Pole Construction and Access Sites

NOTE(S)
1. PROJECT ROW IS 62.5 FT ON EITHER SIDE OF THE PROPOSED TRANSMISSION LINE ROUTE.

REFERENCE(S)
1. JURISDICTIONAL DELINEATION DATA: WSP, 2023, 2024
2. COORDINATE SYSTEM: NAD 1983 STATEPLANE CALIFORNIA V FIPS 0405 FEET
3. MAP SERVICE LAYER CREDITS: WORLD TOPOGRAPHIC MAP: ESRI, HERE, GARMIN, FAO, NOAA, USGS, EPA, NPS
WORLD IMAGERY: MAXAR, MICROSOFT

CLIENT
GEM A-CAES LLC

CONSULTANT

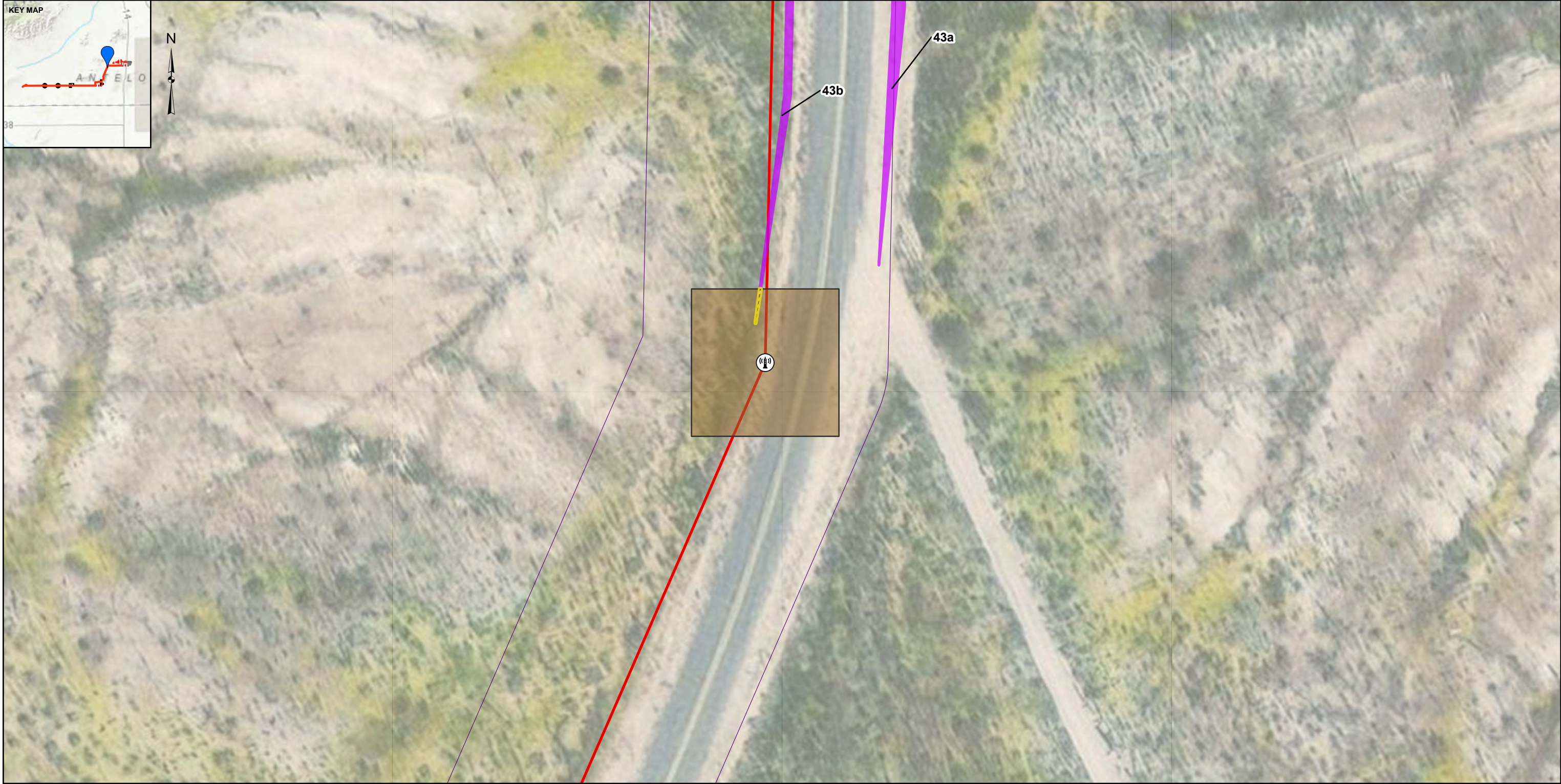
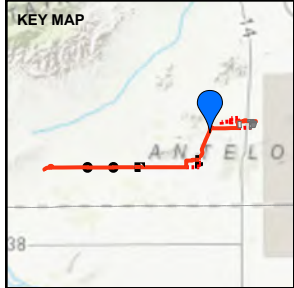


YYYY-MM-DD	2025-03-18
DESIGNED	MK
PREPARED	KO
REVIEWED	DS
APPROVED	JP

PROJECT
WILLOW ROCK ENERGY STORAGE CENTER
JURISDICTIONAL DELINEATION FOCUSED SURVEY

TITLE
JURISDICTIONAL DELINEATION MAP BOOK - TEMPORARY IMPACTS

PROJECT NO.	PHASE	REV.	FIGURE
US0029687.8167	200	0	1-13

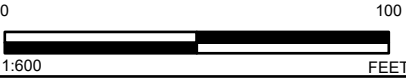


LEGEND

- Jurisdictional Drainages**
- Potential Non-Jurisdictional Drainages
 - Temporary Impacts on Drainage Features
- Proposed Transmission Line**
- Preferred Route, Aboveground
 - Project ROW
- Project Features**
- Proposed Transmission Line Pole Locations
 - Proposed Transmission Pole Construction and Access Sites

NOTE(S)
1. PROJECT ROW IS 62.5 FT ON EITHER SIDE OF THE PROPOSED TRANSMISSION LINE ROUTE.

REFERENCE(S)
1. JURISDICTIONAL DELINEATION DATA: WSP, 2023-2024
2. COORDINATE SYSTEM: NAD 1983 STATEPLANE CALIFORNIA V FIPS 0405 FEET
3. MAP SERVICE LAYER CREDITS: WORLD TOPOGRAPHIC MAP: ESRI, HERE, GARMIN, FAO, NOAA, USGS, EPA, NPS
WORLD IMAGERY: MAXAR, MICROSOFT



CLIENT
GEM A-CAES LLC

CONSULTANT

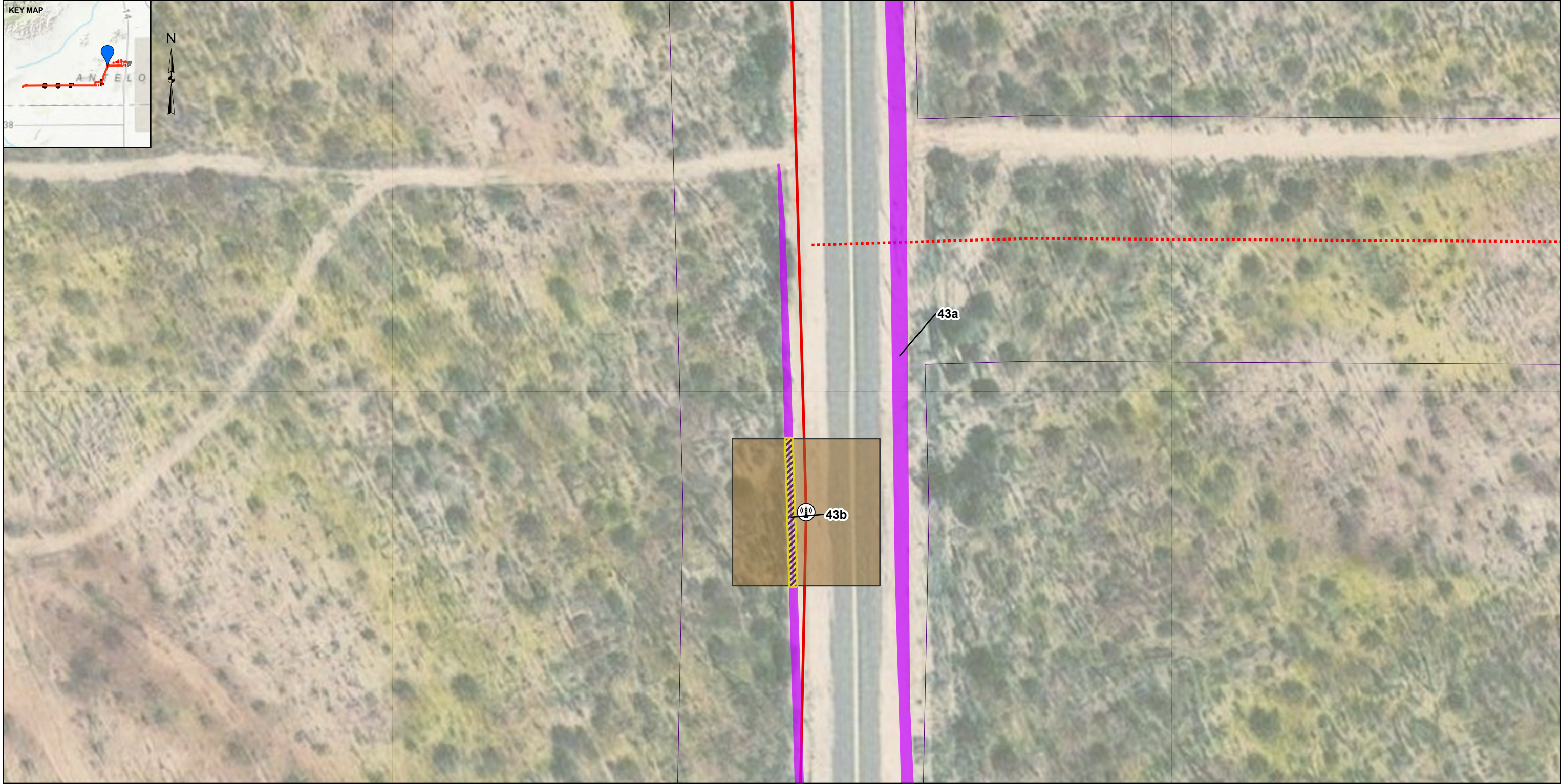
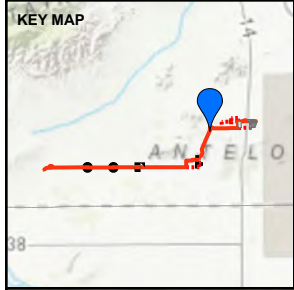


YYYY-MM-DD	2025-03-18
DESIGNED	MK
PREPARED	KO
REVIEWED	DS
APPROVED	JP

PROJECT
WILLOW ROCK ENERGY STORAGE CENTER
JURISDICTIONAL DELINEATION FOCUSED SURVEY

TITLE
JURISDICTIONAL DELINEATION MAP BOOK - TEMPORARY IMPACTS

PROJECT NO.	PHASE	REV.	FIGURE
US0029687.8167	200	0	1-14

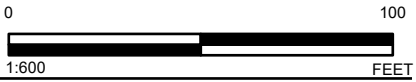


LEGEND

- Jurisdictional Drainages**
- Potential Non-Jurisdictional Drainages
 - Temporary Impacts on Drainage Features
- Proposed Transmission Line**
- Preferred Route, Aboveground
 - Preferred Route Option, Aboveground
 - Project ROW
- Project Features**
- Proposed Transmission Line Pole Locations
 - Proposed Transmission Pole Construction and Access Sites

NOTE(S)
1. PROJECT ROW IS 62.5 FT ON EITHER SIDE OF THE PROPOSED TRANSMISSION LINE ROUTE.

REFERENCE(S)
1. JURISDICTIONAL DELINEATION DATA: WSP, 2023-2024
2. COORDINATE SYSTEM: NAD 1983 STATEPLANE CALIFORNIA V FIPS 0405 FEET
3. MAP SERVICE LAYER CREDITS: WORLD TOPOGRAPHIC MAP: ESRI, HERE, GARMIN, FAO, NOAA, USGS, EPA, NPS
WORLD IMAGERY: MAXAR, MICROSOFT



CLIENT
GEM A-CAES LLC

CONSULTANT

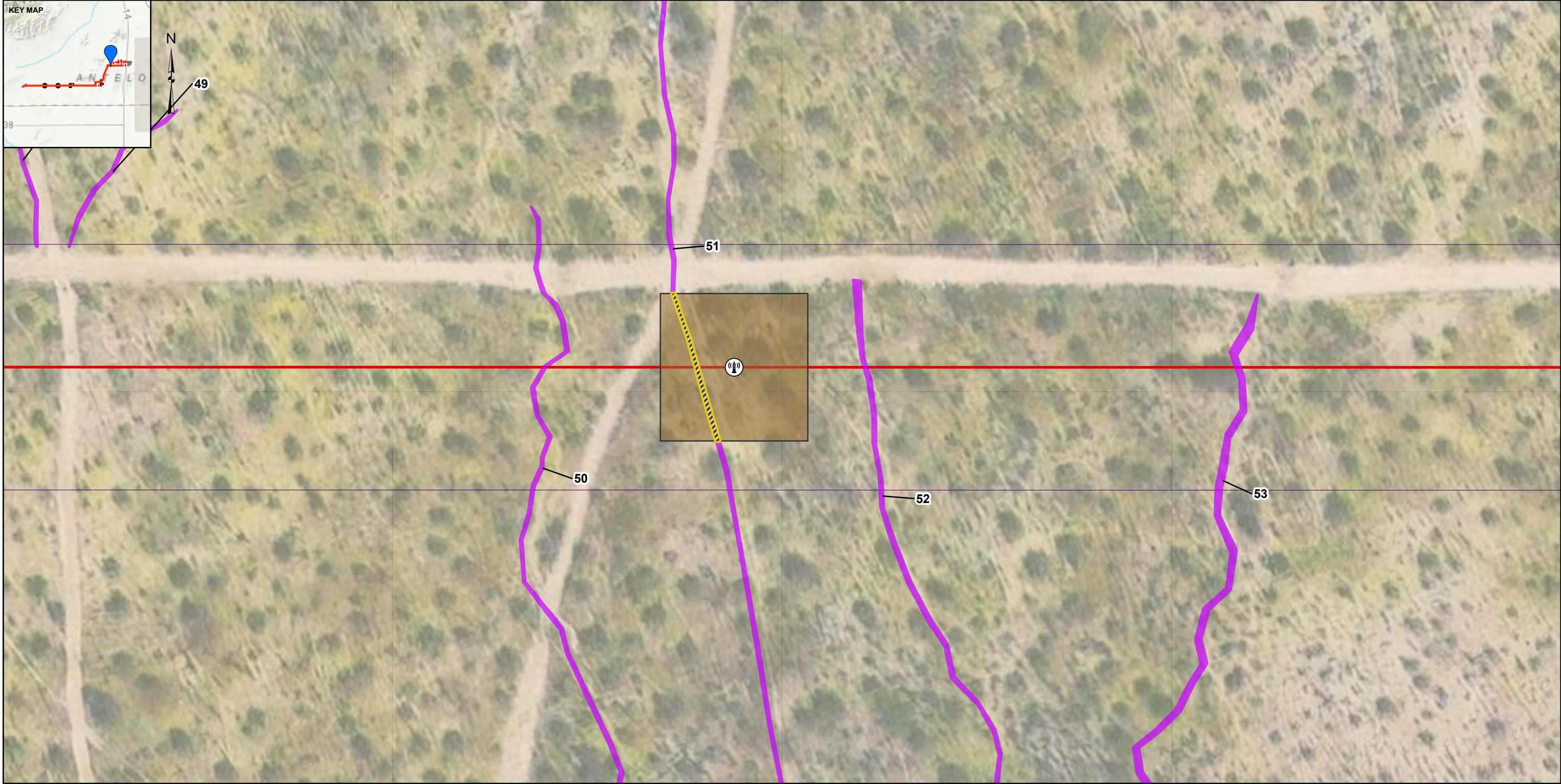


YYYY-MM-DD	2025-03-18
DESIGNED	MK
PREPARED	KO
REVIEWED	DS
APPROVED	JP

PROJECT
WILLOW ROCK ENERGY STORAGE CENTER
JURISDICTIONAL DELINEATION FOCUSED SURVEY

TITLE
JURISDICTIONAL DELINEATION MAP BOOK - TEMPORARY IMPACTS

PROJECT NO.	PHASE	REV.	FIGURE
US0029687.8167	200	0	1-15



LEGEND

Jurisdictional Drainages

- Potential Non-Jurisdictional Drainages
- Temporary Impacts on Drainage Features

Project Features

- Proposed Transmission Line Pole Locations

- Proposed Transmission Pole Construction and Access Sites

Proposed Transmission Line

- Preferred Route, Aboveground
- Project ROW

NOTE(S)

- PROJECT ROW IS 62.5 FT ON EITHER SIDE OF THE PROPOSED TRANSMISSION LINE ROUTE.

REFERENCE(S)

- JURISDICTIONAL DELINEATION DATA: WSP, 2023-2024
 - COORDINATE SYSTEM: NAD 1983 STATEPLANE CALIFORNIA V FIPS 0405 FEET
 - MAP SERVICE LAYER CREDITS: WORLD TOPOGRAPHIC MAP: ESRI, HERE, GARMIN, FAO, NOAA, USGS, EPA, NPS
- WORLD IMAGERY: MAXAR, MICROSOFT



CLIENT
GEM A-CAES LLC

CONSULTANT



YYYY-MM-DD	2025-03-18
DESIGNED	MK
PREPARED	KO
REVIEWED	DS
APPROVED	JP

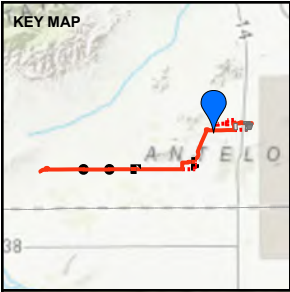
PROJECT

WILLOW ROCK ENERGY STORAGE CENTER
JURISDICTIONAL DELINEATION FOCUSED SURVEY

TITLE

JURISDICTIONAL DELINEATION MAP BOOK - TEMPORARY IMPACTS

PROJECT NO.	PHASE	REV.	FIGURE
US0029687.8167	200	0	1-16



LEGEND

- Jurisdictional Drainages**
- Potential Non-Jurisdictional Drainages
 - Temporary Impacts on Drainage Features
- Proposed Transmission Line**
- Preferred Route, Aboveground
 - Project ROW
- Project Features**
- Proposed Transmission Line Pole Locations
 - Proposed Transmission Pole Construction and Access Sites

NOTE(S)
1. PROJECT ROW IS 62.5 FT ON EITHER SIDE OF THE PROPOSED TRANSMISSION LINE ROUTE.

REFERENCE(S)
1. JURISDICTIONAL DELINEATION DATA: WSP, 2023-2024
2. COORDINATE SYSTEM: NAD 1983 STATEPLANE CALIFORNIA V FIPS 0405 FEET
3. MAP SERVICE LAYER CREDITS: WORLD TOPOGRAPHIC MAP: ESRI, HERE, GARMIN, FAO, NOAA, USGS, EPA, NPS
WORLD IMAGERY: MAXAR, MICROSOFT

CLIENT
GEM A-CAES LLC

CONSULTANT

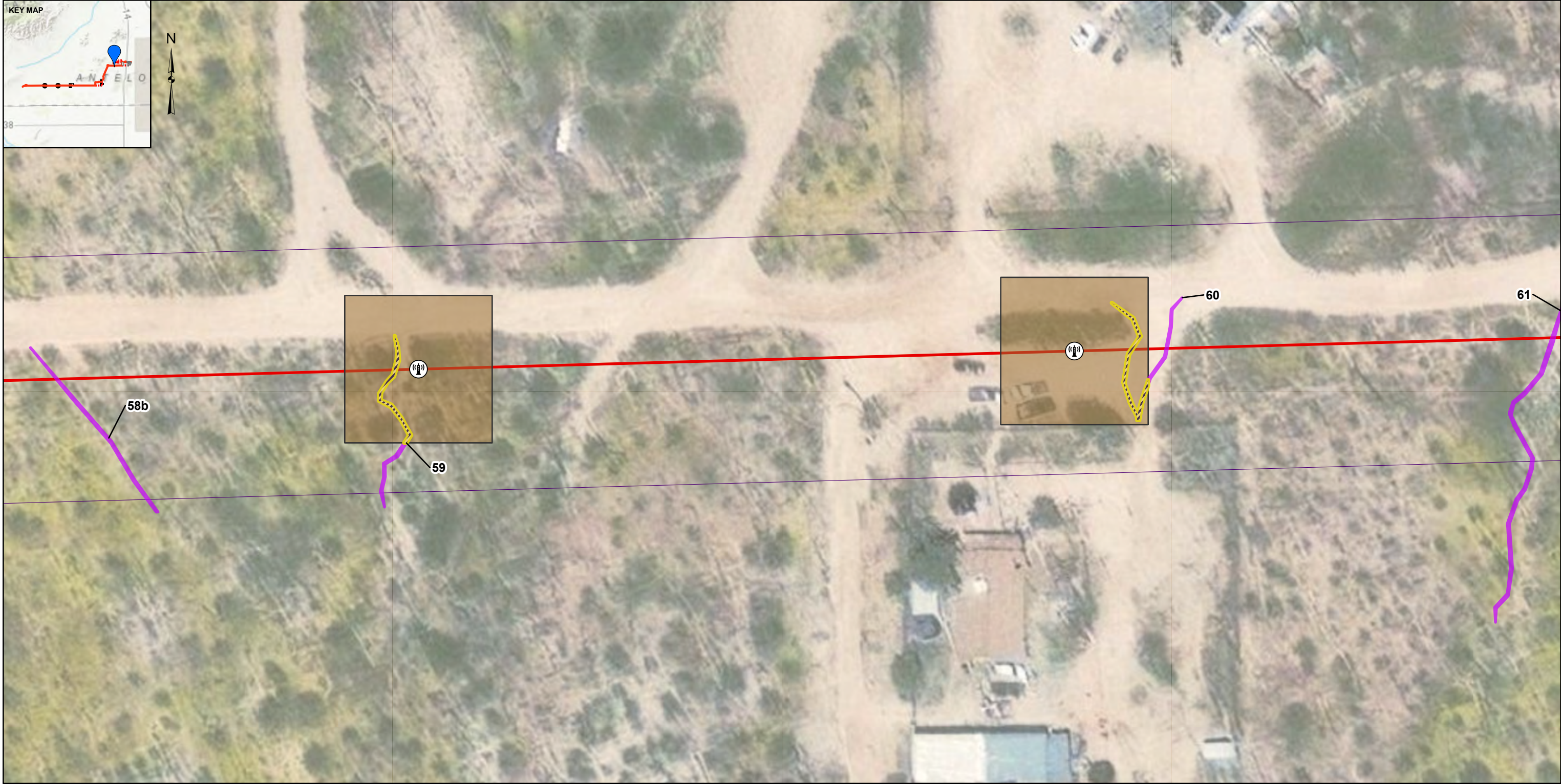


YYYY-MM-DD	2025-03-18
DESIGNED	MK
PREPARED	KO
REVIEWED	DS
APPROVED	JP

PROJECT
WILLOW ROCK ENERGY STORAGE CENTER
JURISDICTIONAL DELINEATION FOCUSED SURVEY

TITLE
JURISDICTIONAL DELINEATION MAP BOOK - TEMPORARY IMPACTS

PROJECT NO.	PHASE	REV.	FIGURE
US0029687.8167	200	0	1-17



LEGEND

Jurisdictional Drainages

- Potential Non-Jurisdictional Drainages
- Temporary Impacts on Drainage Features

Project Features

- Proposed Transmission Line Pole Locations

- Proposed Transmission Pole Construction and Access Sites

Proposed Transmission Line

- Preferred Route, Aboveground
- Project ROW

NOTE(S)

- PROJECT ROW IS 62.5 FT ON EITHER SIDE OF THE PROPOSED TRANSMISSION LINE ROUTE.

REFERENCE(S)

- JURISDICTIONAL DELINEATION DATA: WSP, 2023-2024
- COORDINATE SYSTEM: NAD 1983 STATEPLANE CALIFORNIA V FIPS 0405 FEET
- MAP SERVICE LAYER CREDITS: WORLD TOPOGRAPHIC MAP: ESRI, HERE, GARMIN, FAO, NOAA, USGS, EPA, NPS
WORLD IMAGERY: MAXAR, MICROSOFT



CLIENT
GEM A-CAES LLC

CONSULTANT



YYYY-MM-DD	2025-03-18
DESIGNED	MK
PREPARED	KO
REVIEWED	DS
APPROVED	JP

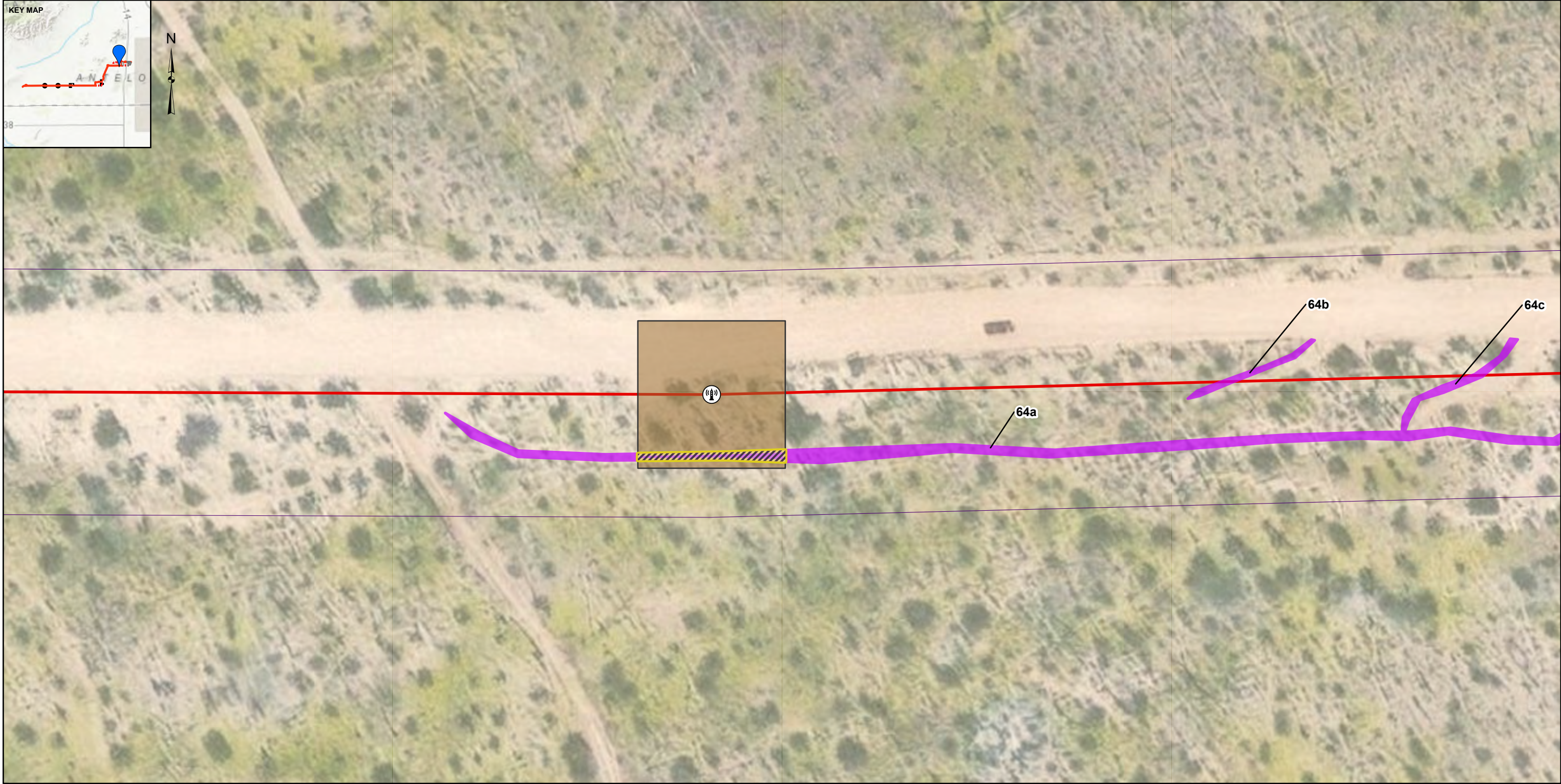
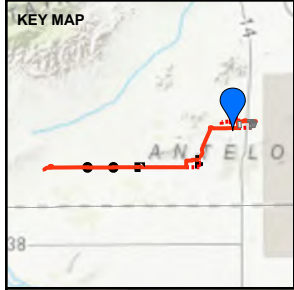
PROJECT

WILLOW ROCK ENERGY STORAGE CENTER
JURISDICTIONAL DELINEATION FOCUSED SURVEY

TITLE

JURISDICTIONAL DELINEATION MAP BOOK - TEMPORARY IMPACTS

PROJECT NO.	PHASE	REV.	FIGURE
US0029687.8167	200	0	1-18



LEGEND

- Jurisdictional Drainages**

 - Potential Non-Jurisdictional Drainages
 - Temporary Impacts on Drainage Features
- Proposed Transmission Line**

 - Preferred Route, Aboveground
 - Project ROW
- Project Features**

 - Proposed Transmission Line Pole Locations
- Proposed Transmission Pole Construction and Access Sites

NOTE(S)
1. PROJECT ROW IS 62.5 FT ON EITHER SIDE OF THE PROPOSED TRANSMISSION LINE ROUTE.

REFERENCE(S)
1. JURISDICTIONAL DELINEATION DATA: WSP, 2023-2024
2. COORDINATE SYSTEM: NAD 1983 STATEPLANE CALIFORNIA V FIPS 0405 FEET
3. MAP SERVICE LAYER CREDITS: WORLD TOPOGRAPHIC MAP: ESRI, HERE, GARMIN, FAO, NOAA, USGS, EPA, NPS
WORLD IMAGERY: MAXAR, MICROSOFT

CLIENT
GEM A-CAES LLC

CONSULTANT

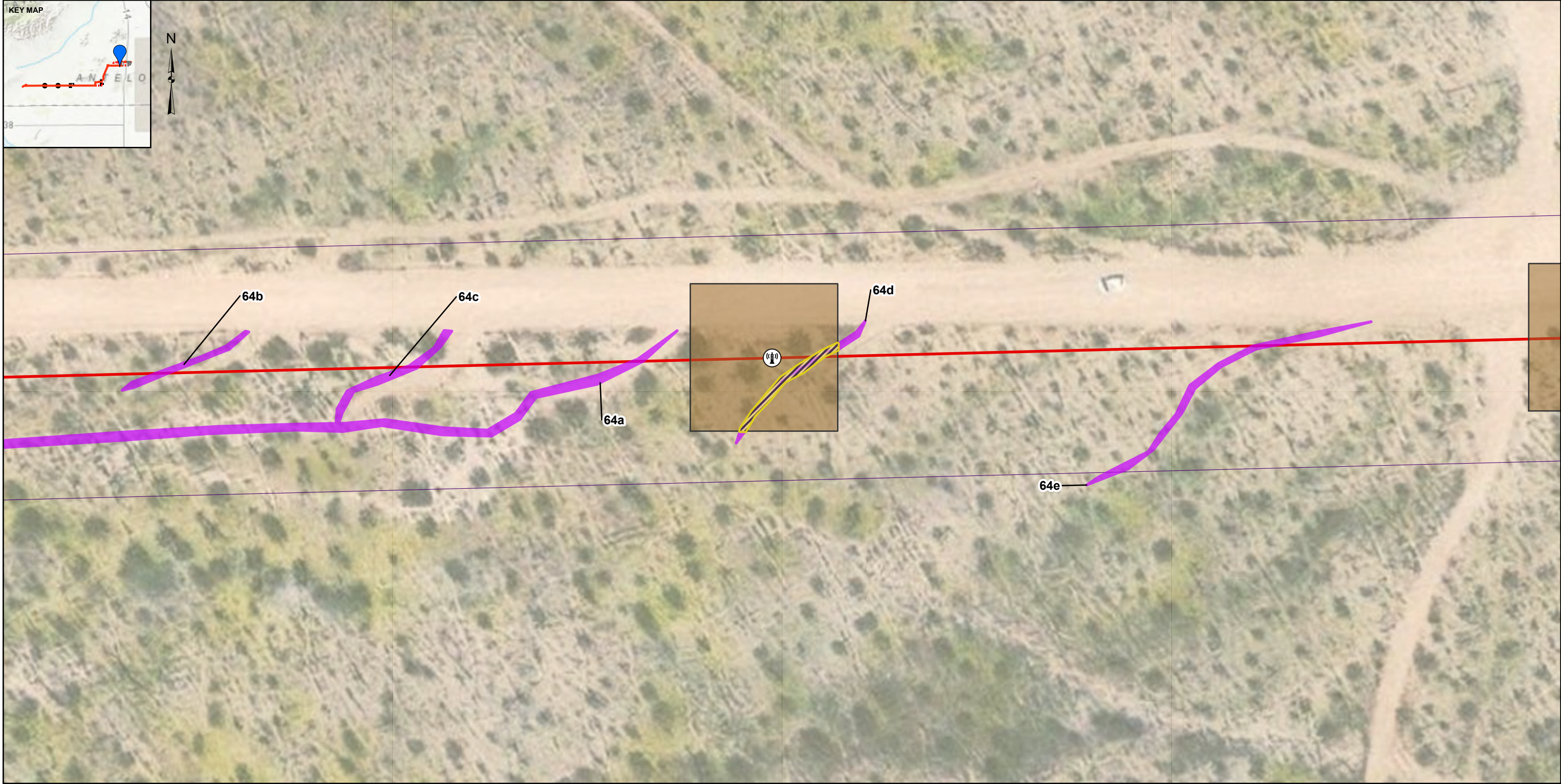
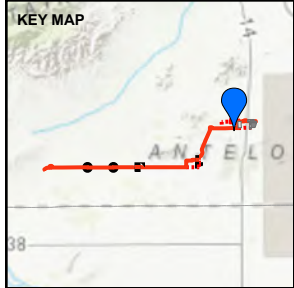


YYYY-MM-DD	2025-03-18
DESIGNED	MK
PREPARED	KO
REVIEWED	DS
APPROVED	JP

PROJECT
WILLOW ROCK ENERGY STORAGE CENTER
JURISDICTIONAL DELINEATION FOCUSED SURVEY

TITLE
JURISDICTIONAL DELINEATION MAP BOOK - TEMPORARY IMPACTS

PROJECT NO.	PHASE	REV.	FIGURE
US0029687.8167	200	0	1-19



LEGEND

Jurisdictional Drainages

- Potential Non-Jurisdictional Drainages
- Temporary Impacts on Drainage Features

Project Features

- Proposed Transmission Line Pole Locations

- Proposed Transmission Pole Construction and Access Sites

Proposed Transmission Line

- Preferred Route, Aboveground
- Project ROW

NOTE(S)

- PROJECT ROW IS 62.5 FT ON EITHER SIDE OF THE PROPOSED TRANSMISSION LINE ROUTE.

REFERENCE(S)

- JURISDICTIONAL DELINEATION DATA: WSP, 2023-2024
- COORDINATE SYSTEM: NAD 1983 STATEPLANE CALIFORNIA V FIPS 0405 FEET
- MAP SERVICE LAYER CREDITS: WORLD TOPOGRAPHIC MAP: ESRI, HERE, GARMIN, FAO, NOAA, USGS, EPA, NPS

PROJECT

WILLOW ROCK ENERGY STORAGE CENTER
JURISDICTIONAL DELINEATION FOCUSED SURVEY

TITLE

**JURISDICTIONAL DELINEATION MAP BOOK - TEMPORARY
IMPACTS**

PROJECT NO.	PHASE	REV.	FIGURE
US0029687.8167	200	0	1-20

CLIENT
GEM A-CAES LLC

CONSULTANT



YYYY-MM-DD 2025-03-18

DESIGNED MK

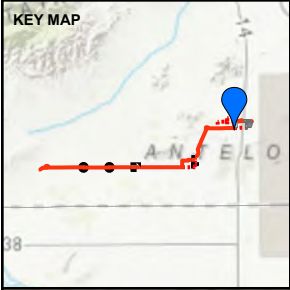
PREPARED KO

REVIEWED DS

APPROVED JP



IF THIS MEASUREMENT DOES NOT MATCH WHAT IS SHOWN, THE SHEET SIZE HAS BEEN MODIFIED FROM: ANSI B



Area could be used for temporary Western Joshua Tree storage and may be temporarily impacted by site access.

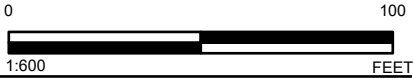
LEGEND

- Jurisdictional Drainages**

 - Potential State Jurisdictional Drainages
 - Temporary Impacts on Drainage Features
 - Proposed Transmission Pole Construction and Access Sites
 - Proposed Pull and Tensioning Sites
 - Existing Unimproved Roads
- Proposed Transmission Line**

 - Preferred Route, Aboveground
 - Project ROW
- Project Components**

 - Villa Haines
 - Project Boundary



NOTE(S)
1. PROJECT ROW IS 62.5 FT ON EITHER SIDE OF THE PROPOSED TRANSMISSION LINE ROUTE.

REFERENCE(S)
1. JURISDICTIONAL DELINEATION DATA: WSP, 2023, 2024
2. COORDINATE SYSTEM: NAD 1983 STATEPLANE CALIFORNIA V FIPS 0405 FEET
3. MAP SERVICE LAYER CREDITS: WORLD TOPOGRAPHIC MAP: ESRI, HERE, GARMIN, FAO, NOAA, USGS, EPA, NPS
WORLD IMAGERY: MAXAR, MICROSOFT

CLIENT
GEM A-CAES LLC

CONSULTANT

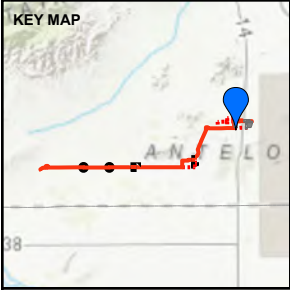


YYYY-MM-DD	2025-03-18
DESIGNED	MK
PREPARED	KO
REVIEWED	DS
APPROVED	JP

PROJECT
WILLOW ROCK ENERGY STORAGE CENTER
JURISDICTIONAL DELINEATION FOCUSED SURVEY

TITLE
JURISDICTIONAL DELINEATION MAP BOOK - TEMPORARY IMPACTS

PROJECT NO.	PHASE	REV.	FIGURE
US0029687.8167	200	0	1-21



LEGEND

Jurisdictional Drainages

- Potential Non-Jurisdictional Drainages
- Temporary Impacts on Drainage Features

Proposed Transmission Line

- Preferred Route Option, Aboveground

- Project ROW

Project Components

- Villa Haines
- Project Boundary

NOTE(S)

- PROJECT ROW IS 62.5 FT ON EITHER SIDE OF THE PROPOSED TRANSMISSION LINE ROUTE.

REFERENCE(S)

- JURISDICTIONAL DELINEATION DATA: WSP, 2023, 2024
- COORDINATE SYSTEM: NAD 1983 STATEPLANE CALIFORNIA V FIPS 0405 FEET
- MAP SERVICE LAYER CREDITS: WORLD TOPOGRAPHIC MAP: ESRI, HERE, GARMIN, FAO, NOAA, USGS, EPA, NPS
WORLD IMAGERY: MAXAR, MICROSOFT

CLIENT
GEM A-CAES LLC

CONSULTANT



YYYY-MM-DD 2025-03-18

DESIGNED MK

PREPARED KO

REVIEWED DS

APPROVED JP

PROJECT
WILLOW ROCK ENERGY STORAGE CENTER
JURISDICTIONAL DELINEATION FOCUSED SURVEY

TITLE
JURISDICTIONAL DELINEATION MAP BOOK - TEMPORARY IMPACTS

PROJECT NO.	PHASE	REV.	FIGURE
US0029687.8167	200	0	1-22



LEGEND

Jurisdictional Drainages

Potential State Jurisdictional Drainages

Project Components

P2 South

Project Boundary

CLIENT

GEM A-CAES LLC

CONSULTANT

wsp

0100

1:600

FEET

NOTE(S)

1. PROJECT ROW IS 62.5 FT ON EITHER SIDE OF THE PROPOSED TRANSMISSION LINE ROUTE.

REFERENCE(S)

1. JURISDICTIONAL DELINEATION DATA: WSP, 2023,2024
2. COORDINATE SYSTEM: NAD 1983 STATEPLANE CALIFORNIA V FIPS 0405 FEET
3. MAP SERVICE LAYER CREDITS: WORLD TOPOGRAPHIC MAP: ESRI, HERE, GARMIN, FAO, NOAA, USGS, EPA, NPS
WORLD IMAGERY: MAXAR, MICROSOFT

PROJECT

WILLOW ROCK ENERGY STORAGE CENTER
JURISDICTIONAL DELINEATION FOCUSED SURVEY

TITLE

JURISDICTIONAL DELINEATION MAP BOOK - TEMPORARY IMPACTS

PROJECT NO.

PHASE

REV.

FIGURE

US0029687.8167

200

0

1-24

PATH: G:\Hydro\Aerial\11_GIS\TEMP\2025_03_10_KO_IDImpacts_Updated\Report\UD_Impacts_KO_03102025.aprx PRINTED: 3/18/2025 at 1:28 PM BY: USKO127008

IF THIS MEASUREMENT DOES NOT MATCH WHAT IS SHOWN, THE SHEET SIZE HAS BEEN MODIFIED FROM: ANSI B