

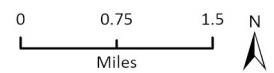
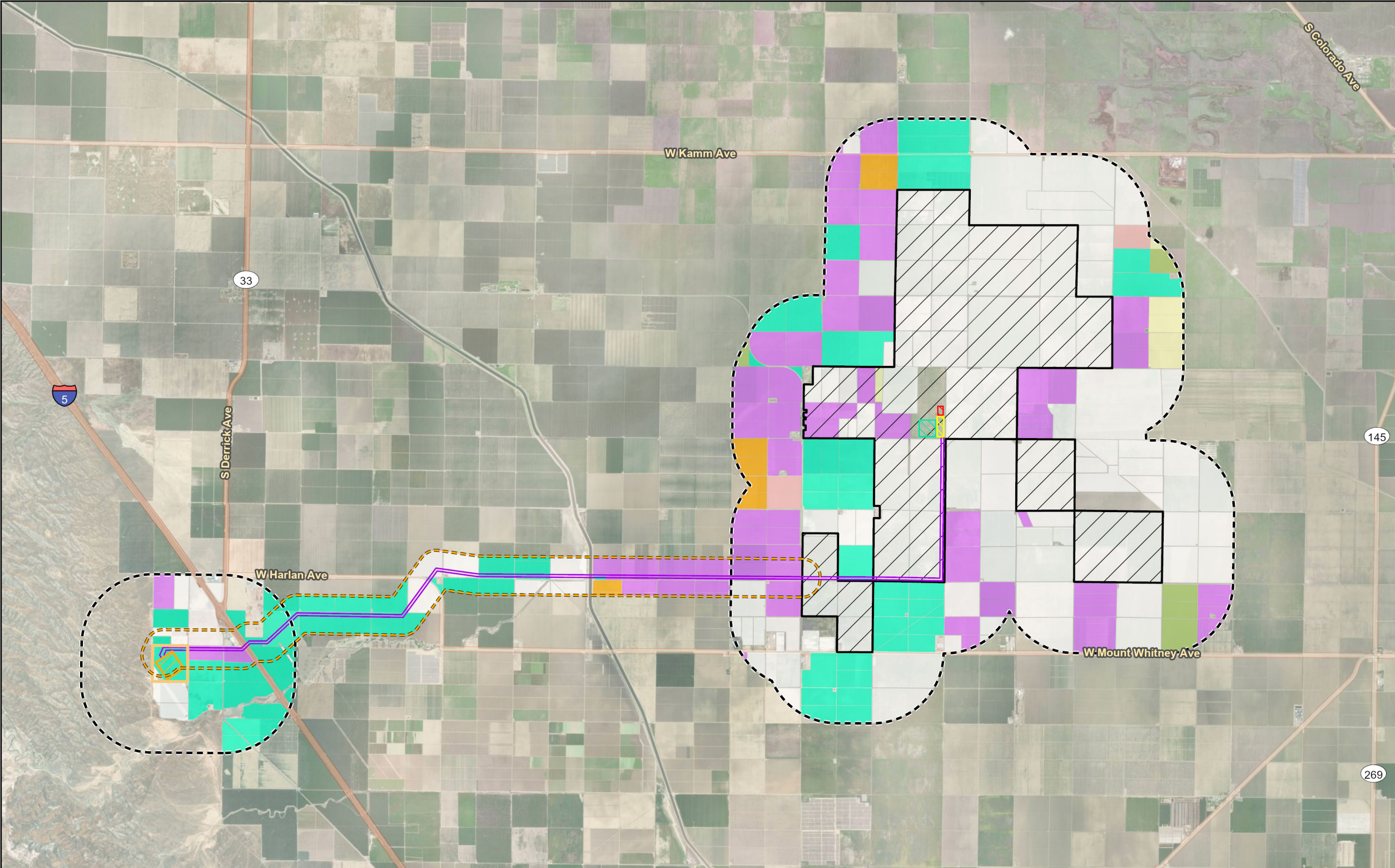
DOCKETED

Docket Number:	23-OPT-02
Project Title:	Darden Clean Energy Project
TN #:	261490
Document Title:	Updated Land Use Figures
Description:	This file contains land use figures with the updated proposed project layout.
Filer:	Becky Moores
Organization:	Intersect Power
Submitter Role:	Applicant
Submission Date:	1/31/2025 12:17:14 PM
Docketed Date:	1/31/2025

Darden Clean Energy Project

Fresno County, California



- 0.25-Mile Buffer
- 1-Mile Buffer
- Agricultural Uses (CNRA)**
 - Deciduous Fruits and Nuts
 - Field Crops
 - Grain and Hay Crop
 - Pasture
 - Truck Nursery and Berry Crops
 - Unclassified
 - Vineyard
- Project Components**
 - Solar Facility
 - Utility Switchyard
 - Utility Switchyard Parcel
 - Gen-Tie Line ROW
- Option 1**
 - BESS
 - O&M Facilities
 - Step-Up Substation









RINCON CONSULTANTS, INC.
Environmental Scientists | Planners | Engineers

Darden Clean Energy Project

Fresno County, California

-  0.25-Mile Buffer
-  1-Mile Buffer

Important Farmland

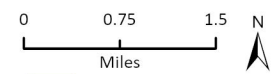
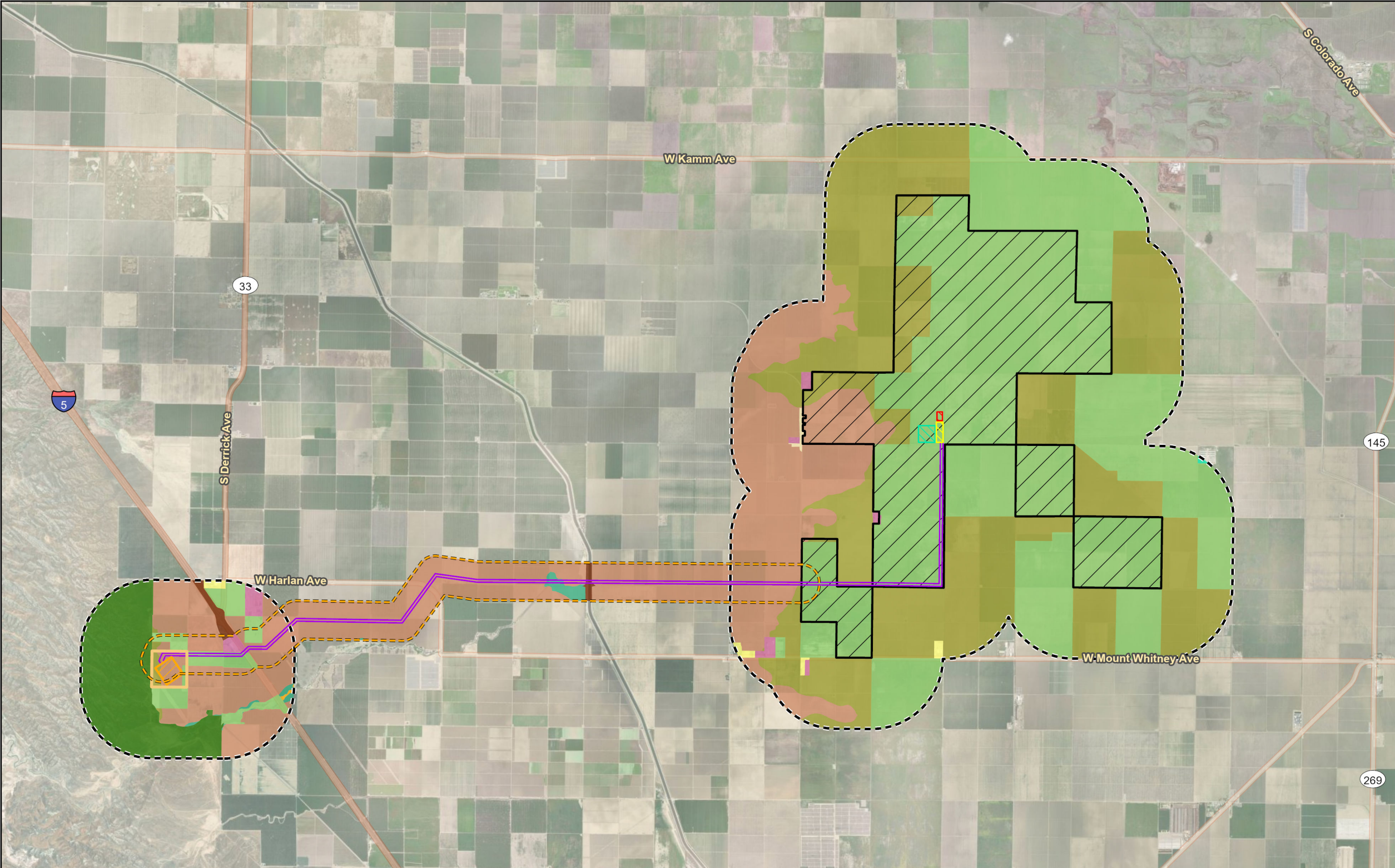
-  Confined Animal Agriculture
-  Grazing Land
-  Farmland of Local Importance
-  Farmland of Statewide Importance
-  Nonagricultural or Natural Vegetation
-  Prime Farmland
-  Rural Residential Land
-  Semi-Agricultural and Rural Commercial Land
-  Unique Farmland
-  Urban and Built-up Land
-  Vacant or Disturbed Land

Project Components

-  Solar Facility
-  Utility Switchyard
-  Utility Switchyard Parcel
-  Gen-Tie Line ROW

Option 1

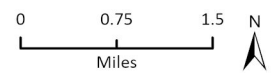
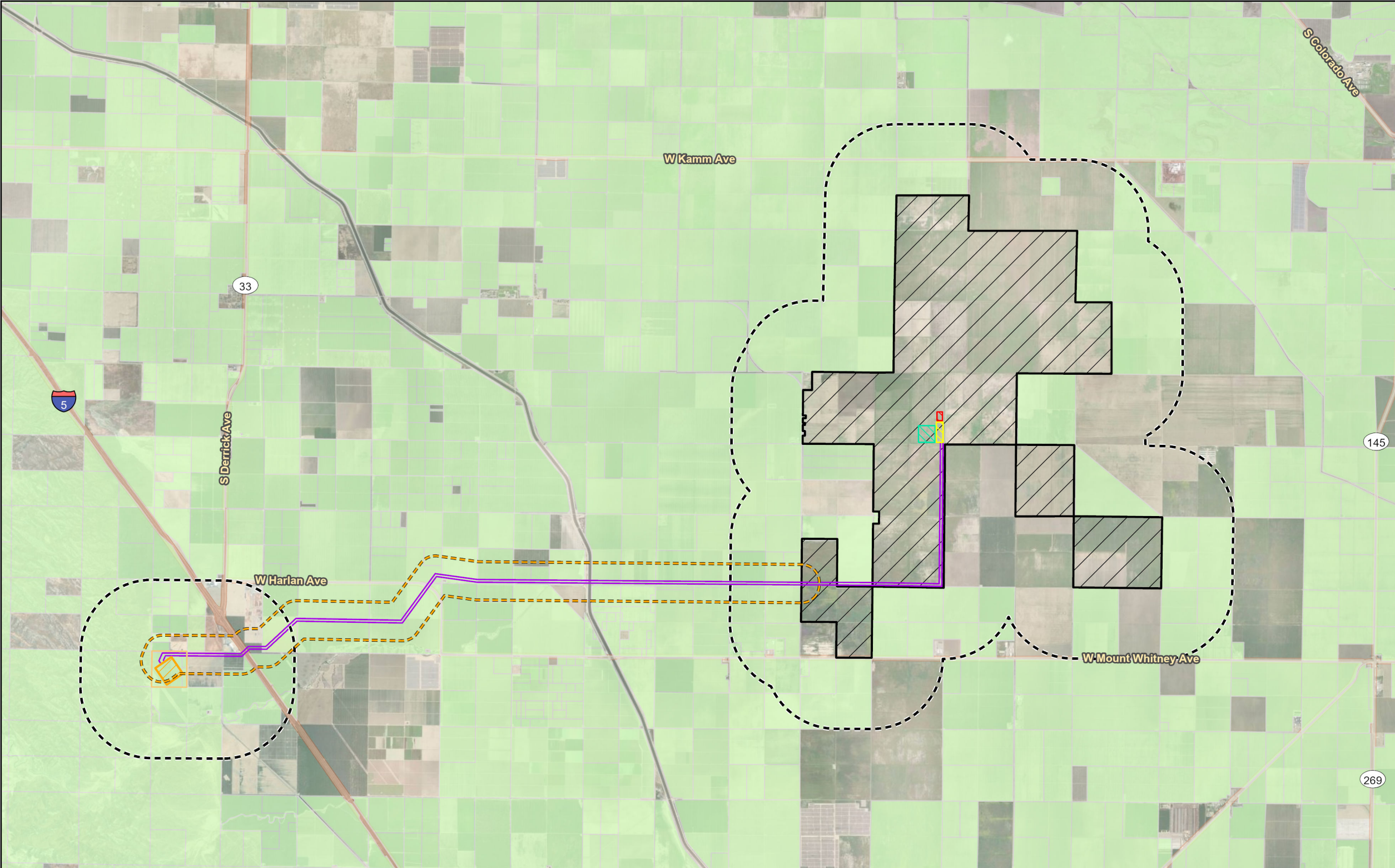
-  BESS
-  O&M Facilities
-  Step-Up Substation



Darden Clean Energy Project

Fresno County, California















- Active Williamson Act
 - 0.25-Mile Buffer
 - 1-Mile Buffer
- Project Components**
- Solar Facility
 - Utility Switchyard
 - Utility Switchyard Parcel
 - Gen-Tie Line ROW
- Option 1**
- BESS
 - O&M Facilities
 - Step-Up Substation



RINCON CONSULTANTS, INC.
Environmental Scientists | Planners | Engineers

Darden Clean Energy Project

Fresno County, California

-  100-Foot Buffer
- Land Cover**
-  Unclassified
-  Non-Active Agriculture
-  Orchard
-  Grassland
-  Open Water
-  Developed
- Project Components**
-  Solar Facility
-  Utility Switchyard
-  Utility Switchyard Parcel
-  Gen-Tie Line ROW
- Option 1**
-  BESS
-  O&M Facilities
-  Step-Up Substation

