

DOCKETED	
Docket Number:	23-OPT-02
Project Title:	Darden Clean Energy Project
TN #:	260651
Document Title:	Supplemental Data Response Set 1 - Appendix J SUP DR PD-1 Updated Visual Simulations Part 3
Description:	Provides updated visual simulations showing the project with the hydrogen facility removed. (Part 3/3)
Filer:	Megan Knight
Organization:	Rincon Consultants, Inc.
Submitter Role:	Applicant Consultant
Submission Date:	12/13/2024 4:42:12 PM
Docketed Date:	12/13/2024

Appendix J - Part 3

SUP DR PD-1 Updated Visual Simulations



Viewpoint 6 - W Cerini Ave - Residences, Looking South - Proposed View

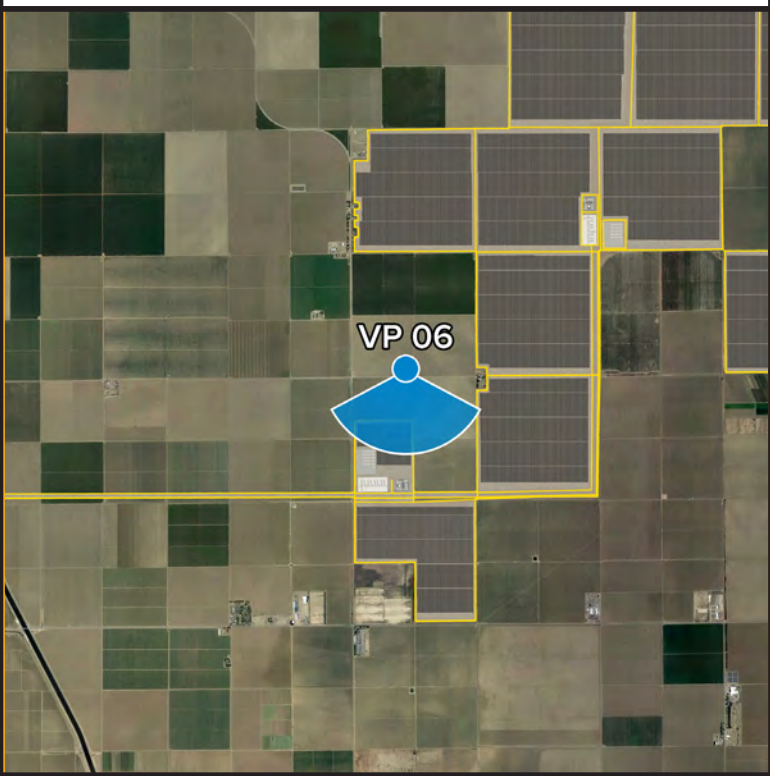
For on-screen display:
Scale bar to be 4 inches wide
Viewing distance 19.7 inches



Project Darden

Viewpoint 6
W Cerini Ave - Residences
Looking South

● Viewpoint Location ● Project Area



Easting Position: **-120.239018'**
Northing Position: **36.458105'**
Elevation of Viewpoint Position (MAD83): **2573**
Height of Camera Above Ground (ft): **5.58**
Date of Photography: **15-Aug-23 at 3:09 pm**
Orientation of View: **S**
Horizontal Field of View: **124°**
Vertical Field of View: **55°**

CORRECT VIEWING OF TRUEVIEW™ PHOTO SIMULATIONS

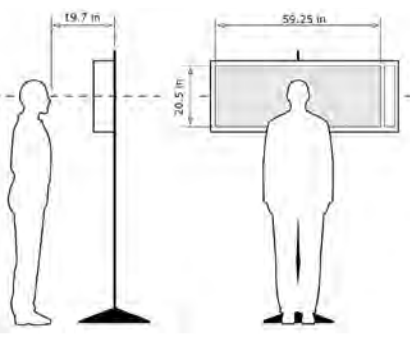


Photo Simulation Created Using
TrueView™ Technology
(Patent No.: US 6,184,906 B2)
Provided by

Truescape®
truescape.com



Viewpoint 6 - W Cerini Ave - Residences, Looking South - Proposed Overlay View

For on-screen display:
Scale bar to be 4 inches wide
Viewing distance 19.7 inches



Project Darden

Viewpoint 6
W Cerini Ave - Residences
Looking South

Viewpoint Location Project Area



Easting Position: 120.239018'
Northing Position: 36.458105'
Elevation of Viewpoint Position (MAD83): 2573
Height of Camera Above Ground (ft): 5.58
Date of Photography: 15-Aug-23 at 3:09 pm
Orientation of View: S
Horizontal Field of View: 124°
Vertical Field of View: 55°

CORRECT VIEWING OF TRUEVIEW™ PHOTO SIMULATIONS

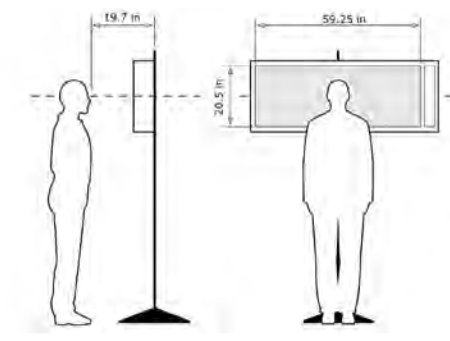


Photo Simulation Created Using
TrueView™ Technology
(Patent No.: US 6,184,906 B2)
Provided by





Viewpoint 6 - W Cerini Ave - Residences, Looking South - Proposed View with Crop Outline

For on-screen display:
Scale bar to be 4 inches wide
Viewing distance 19.7 inches



Project Darden

Viewpoint 6
W Cerini Ave - Residences
Looking South

● Viewpoint Location ● Project Area



Easting Position: **-120.239018'**
Northing Position: **36.458105'**
Elevation of Viewpoint Position (MAD3): **2573**
Height of Camera Above Ground (ft): **5.58**
Date of Photography: **15-Aug-23 at 3:09 pm**
Orientation of View: **S**
Horizontal Field of View: **124'**
Vertical Field of View: **55'**

CORRECT VIEWING OF TRUEVIEW™ PHOTO SIMULATIONS

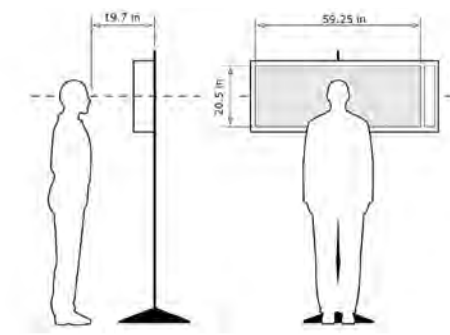


Photo Simulation Created Using
TrueView™ Technology
(Patent No.: US 6,184,906 B2)
Provided by

Truescape®
truescape.com



For on-screen display:
Scale bar to be 4 inches wide
Viewing distance 19.7 inches



For on-screen display:
Scale bar to be 4 inches wide
Viewing distance 19.7 inches



For on-screen display:
Scale bar to be 4 inches wide
Viewing distance 19.7 inches