

DOCKETED	
Docket Number:	23-OPT-02
Project Title:	Darden Clean Energy Project
TN #:	260652
Document Title:	Supplemental Data Response Set 1 - Appendix J SUP DR PD-1 Updated Visual Simulations Part 2
Description:	Provides updated visual simulations showing the project with the hydrogen facility removed. (Part 2/3)
Filer:	Megan Knight
Organization:	Rincon Consultants, Inc.
Submitter Role:	Applicant Consultant
Submission Date:	12/13/2024 4:42:12 PM
Docketed Date:	12/13/2024

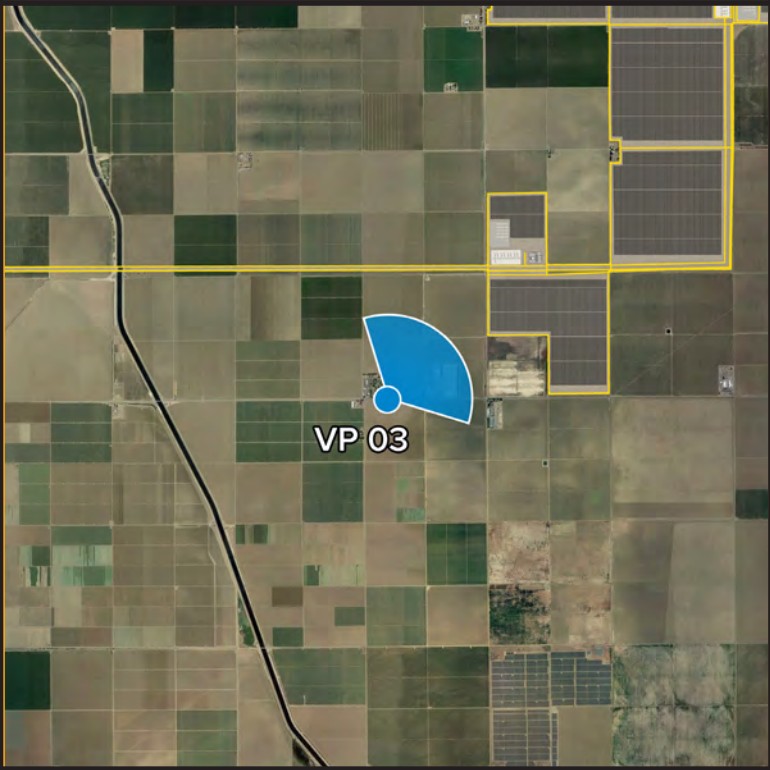
Appendix J - Part 2

SUP DR PD-1 Updated Visual Simulations

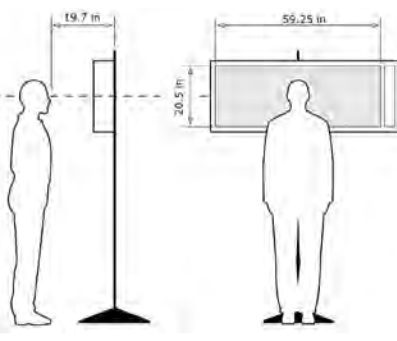


Viewpoint 3 - W Mt Whitney Ave - Residences, Looking Northeast - Proposed View with Crop Outline

For on-screen display:
Scale bar to be 4 inches wide
Viewing distance 19.7 inches



Easting Position: 120.263092'
Northing Position: 36.428922'
Elevation of Viewpoint Position (MAD83): 280.5
Height of Camera Above Ground (ft): 5.58
Date of Photography: 16-Aug-23 at 10:56 am
Orientation of View: NE
Horizontal Field of View: 124'
Vertical Field of View: 55'





For on-screen display:
Scale bar to be 4 inches wide
Viewing distance 19.7 inches



For on-screen display:
Scale bar to be 4 inches wide
Viewing distance 19.7 inches

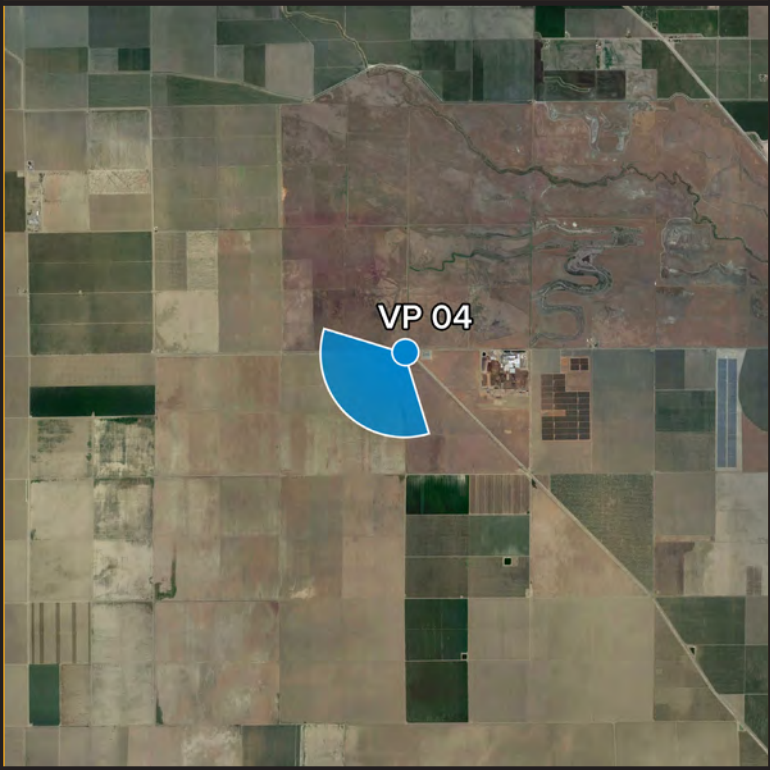


For on-screen display:
Scale bar to be 4 inches wide
Viewing distance 19.7 inches



Viewpoint 4 - S. Yuba Avenue & W. Kamm Avenue, Looking Southwest - Existing View

For on-screen display:
Scale bar to be 4 inches wide
Viewing distance 19.7 inches



Easting Position: -120.169867°
Northing Position: 36.531320°
Elevation of Viewpoint Position (MAD83): 189.8
Height of Camera Above Ground (ft): 5.58
Date of Photography: 15-Aug-23 at 11:17 am
Orientation of View: SW
Horizontal Field of View: 124°
Vertical Field of View: 55°

CORRECT VIEWING OF TRUEVIEW™ PHOTO SIMULATIONS

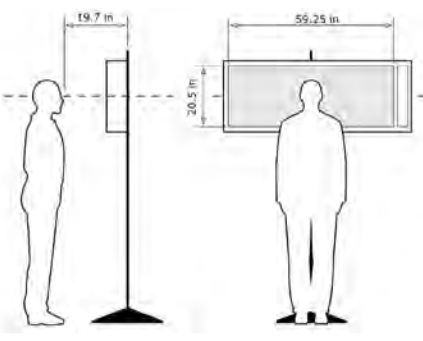


Photo Simulation Created Using
TrueView™ Technology
(Patent No.: US 8,184,906 B2)
Provided by



Viewpoint 4 - S. Yuba Avenue & W. Kamm Avenue, Looking Southwest - Proposed View

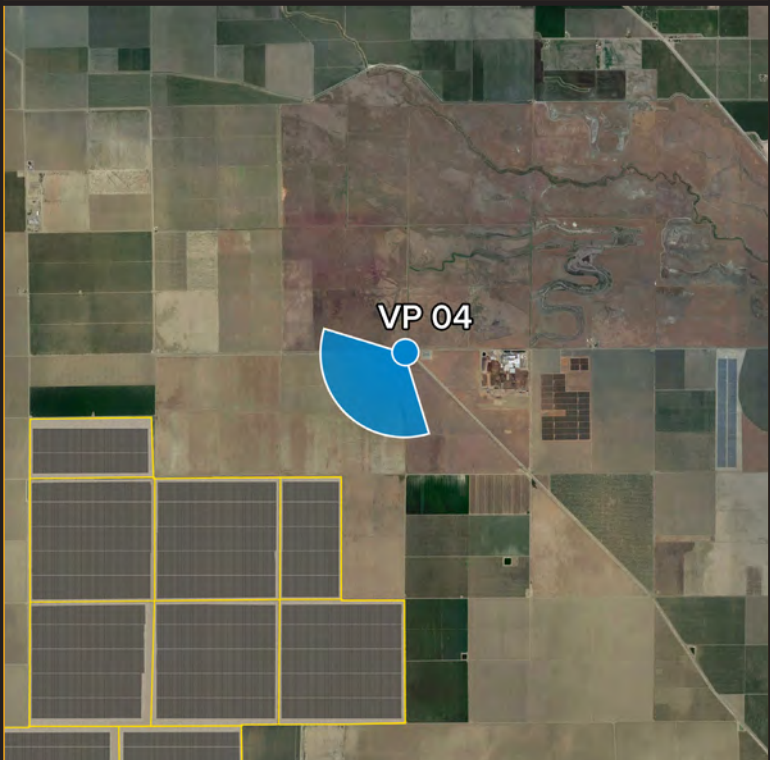
For on-screen display:
Scale bar to be 4 inches wide
Viewing distance 19.7 inches



Project Darden

Viewpoint 4
S. Yuba Avenue & W. Kamm Avenue
Looking Southwest

Viewpoint Location Project Area



Easting Position: -120.169867°
Northing Position: 36.531320°
Elevation of Viewpoint Position (MAD83): 189.8
Height of Camera Above Ground (ft): 5.58
Date of Photography: 15-Aug-23 at 11:17 am
Orientation of View: SW
Horizontal Field of View: 124°
Vertical Field of View: 55°

CORRECT VIEWING OF TRUEVIEW™ PHOTO SIMULATIONS

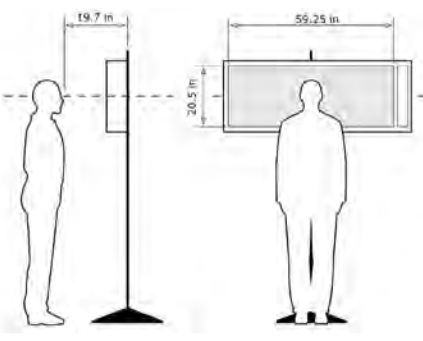


Photo Simulation Created Using
TrueView™ Technology
(Patent No.: US 8,184,906 B2)
Provided by





Viewpoint 4 - S. Yuba Avenue & W. Kamm Avenue, Looking Southwest - Proposed Overlay View

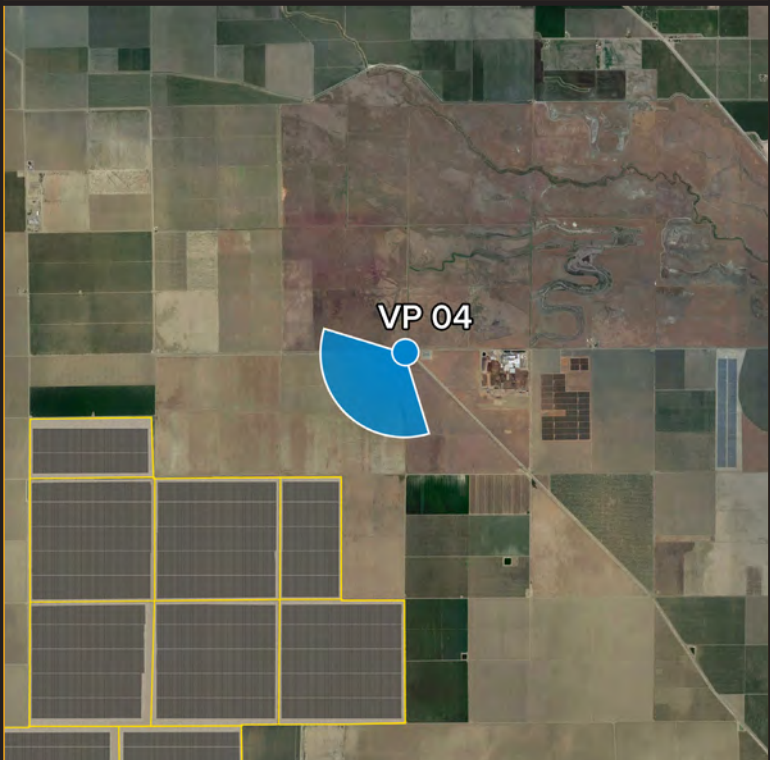
For on-screen display:
Scale bar to be 4 inches wide
Viewing distance 19.7 inches



Project Darden

Viewpoint 4
S. Yuba Avenue & W. Kamm Avenue
Looking Southwest

Viewpoint Location Project Area



Easting Position: -120.169867°
Northing Position: 36.531320°
Elevation of Viewpoint Position (MAD83): 189.8
Height of Camera Above Ground (ft): 5.58
Date of Photography: 15-Aug-23 at 11:17 am
Orientation of View: SW
Horizontal Field of View: 124°
Vertical Field of View: 55°

CORRECT VIEWING OF TRUEVIEW™ PHOTO SIMULATIONS

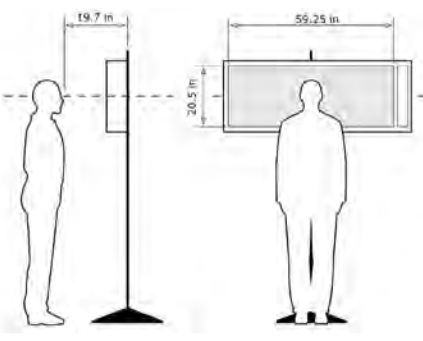


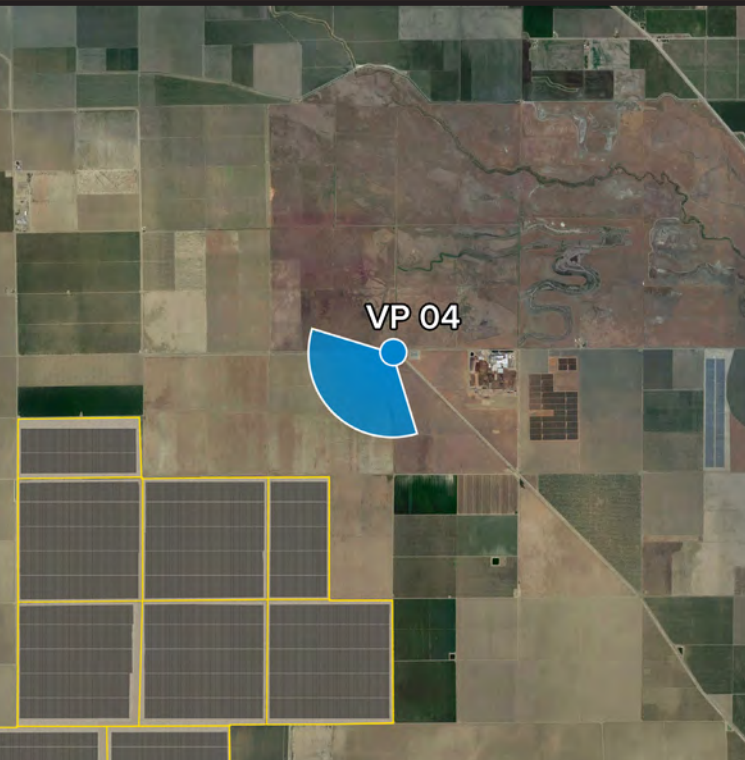
Photo Simulation Created Using
TrueView™ Technology
(Patent No.: US 8,184,906 B2)
Provided by





Viewpoint 4 - S. Yuba Avenue & W. Kamm Avenue, Looking Southwest - Proposed View with Crop Outline

For on-screen display:
Scale bar to be 4 inches wide
Viewing distance 19.7 inches



Easting Position: -120.169867°
Northing Position: 36.531320°
Elevation of Viewpoint Position (MAD83): 189.8
Height of Camera Above Ground (ft): 5.58
Date of Photography: 15-Aug-23 at 11:17 am
Orientation of View: SW
Horizontal Field of View: 124°
Vertical Field of View: 55°

CORRECT VIEWING OF TRUEVIEW™ PHOTO SIMULATIONS

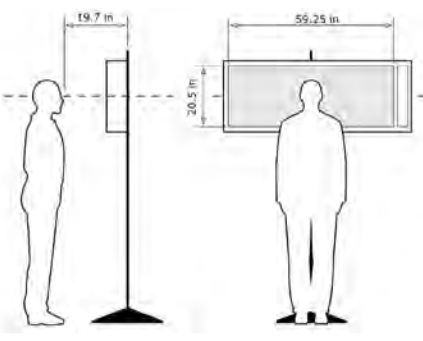


Photo Simulation Created Using
TrueView™ Technology
(Patent No.: US 8,184,906 B2)
Provided by



For on-screen display:
Scale bar to be 4 inches wide
Viewing distance 19.7 inches



For on-screen display:
Scale bar to be 4 inches wide
Viewing distance 19.7 inches




For on-screen display:
Scale bar to be 4 inches wide
Viewing distance 19.7 inches



Viewpoint 5 - W Kamm Ave, Looking South - Existing View

For on-screen display:
Scale bar to be 4 inches wide
Viewing distance 19.7 inches




Project Darden

Viewpoint 5
W Kamm Ave
Looking South

● Viewpoint Location

● Project Area



Easting Position:120.240957°

Northing Position:36.530488°

Elevation of Viewpoint Position (MAD83):209.5

Height of Camera Above Ground (ft):5.58

Date of Photography:15-Aug-23 at 12:49 pm

Orientation of View:N

Horizontal Field of View:124°

Vertical Field of View:55°

CORRECT VIEWING OF TRUEVIEW™ PHOTO SIMULATIONS

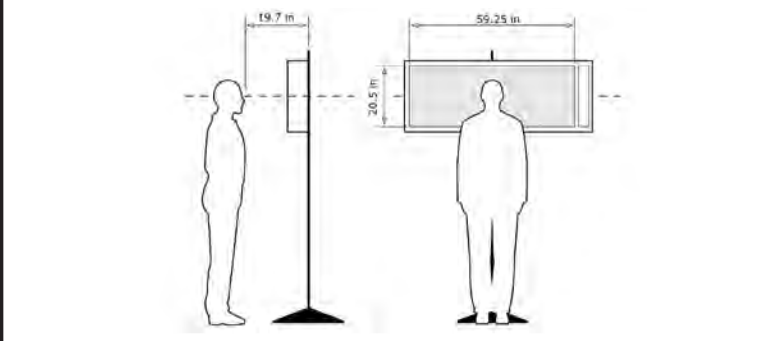


Photo Simulation Created Using
TrueView™ Technology
(Patent No.: US 8,184,906 B2)


Provided by

Truescape®
truescape.com



Viewpoint 5 - W Kamm Ave, Looking South - Proposed View

For on-screen display:
Scale bar to be 4 inches wide
Viewing distance 19.7 inches




Project Darden

Viewpoint 5
W Kamm Ave
Looking South

● Viewpoint Location

● Project Area



Easting Position:120.240957°

Northing Position:36.530488°

Elevation of Viewpoint Position (MAD83):209.5

Height of Camera Above Ground (ft):5.58

Date of Photography:15-Aug-23 at 12:49 pm

Orientation of View:N

Horizontal Field of View:124°

Vertical Field of View:55°

CORRECT VIEWING OF TRUEVIEW™ PHOTO SIMULATIONS

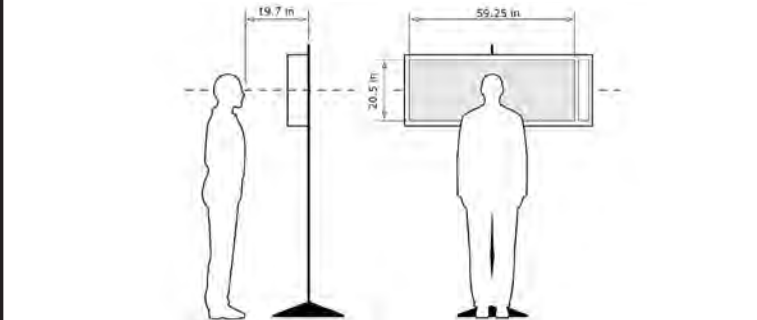


Photo Simulation Created Using
TrueView™ Technology
(Patent No.: US 8,184,906 B2)
Provided by

Truescape®
truescape.com



Viewpoint 5 - W Kamm Ave, Looking South - Proposed Overlay View

For on-screen display:
Scale bar to be 4 inches wide
Viewing distance 19.7 inches



Project Darden

Viewpoint 5
W Kamm Ave
Looking South

Viewpoint Location Project Area



Easting Position: 120.240957"
Northing Position: 36.530488"
Elevation of Viewpoint Position (MAD83): 209.5
Height of Camera Above Ground (ft): 5.58
Date of Photography: 15-Aug-23 at 12:49 pm
Orientation of View: N
Horizontal Field of View: 124°
Vertical Field of View: 55°

CORRECT VIEWING OF TRUEVIEW™ PHOTO SIMULATIONS

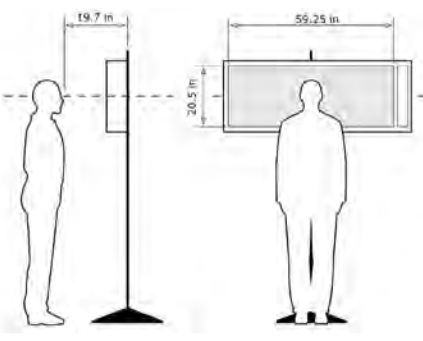


Photo Simulation Created Using
TrueView™ Technology
(Patent No.: US 8,184,906 B2)
Provided by





Viewpoint 5 - W Kamm Ave, Looking South - Proposed View with Crop Outline

For on-screen display:
Scale bar to be 4 inches wide
Viewing distance 19.7 inches



Project Darden

Viewpoint 5
W Kamm Ave
Looking South

Viewpoint Location Project Area



Easting Position: 120.240957"
Northing Position: 36.530488"
Elevation of Viewpoint Position (MAD83): 209.5
Height of Camera Above Ground (ft): 5.58
Date of Photography: 15-Aug-23 at 12:49 pm
Orientation of View: N
Horizontal Field of View: 124°
Vertical Field of View: 55°

CORRECT VIEWING OF TRUEVIEW™ PHOTO SIMULATIONS

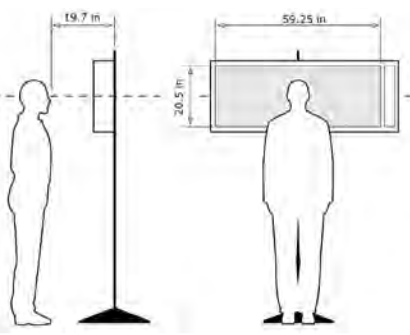


Photo Simulation Created Using
TrueView™ Technology
(Patent No.: US 6,184,906 B2)
Provided by





For on-screen display:
Scale bar to be 4 inches wide
Viewing distance 19.7 inches



For on-screen display:
Scale bar to be 4 inches wide
Viewing distance 19.7 inches



For on-screen display:
Scale bar to be 4 inches wide
Viewing distance 19.7 inches



Viewpoint 6 - W Cerini Ave - Residences, Looking South - Existing View

For on-screen display:
Scale bar to be 4 inches wide
Viewing distance 19.7 inches



Project Darden

Viewpoint 6
W Cerini Ave - Residences
Looking South

Viewpoint Location Project Area



Easting Position: 120.239018'
Northing Position: 36.458105'
Elevation of Viewpoint Position (MAD83): 2573
Height of Camera Above Ground (ft): 5.58
Date of Photography: 15-Aug-23 at 3:09 pm
Orientation of View: S
Horizontal Field of View: 124°
Vertical Field of View: 55°

CORRECT VIEWING OF TRUEVIEW™ PHOTO SIMULATIONS

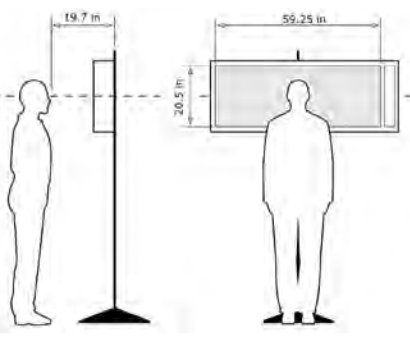


Photo Simulation Created Using
TrueView™ Technology
(Patent No.: US 6,184,906 B2)
Provided by

