

<b>DOCKETED</b>	
<b>Docket Number:</b>	23-OPT-02
<b>Project Title:</b>	Darden Clean Energy Project
<b>TN #:</b>	260653
<b>Document Title:</b>	Supplemental Data Response Set 1 - Appendix J SUP DR PD-1 Updated Visual Simulations Part 1
<b>Description:</b>	Provides updated visual simulations showing the project with the hydrogen facility removed. (Part 1/3)
<b>Filer:</b>	Megan Knight
<b>Organization:</b>	Rincon Consultants, Inc.
<b>Submitter Role:</b>	Applicant Consultant
<b>Submission Date:</b>	12/13/2024 4:42:12 PM
<b>Docketed Date:</b>	12/13/2024

# Appendix J - Part 1

---

SUP DR PD-1 Updated Visual Simulations



**TrueView Photo Simulations - Existing & Proposed  
December 2024**



## Viewpoint Locations

**Viewpoint 1** - S Derrick Ave & West Side Fwy

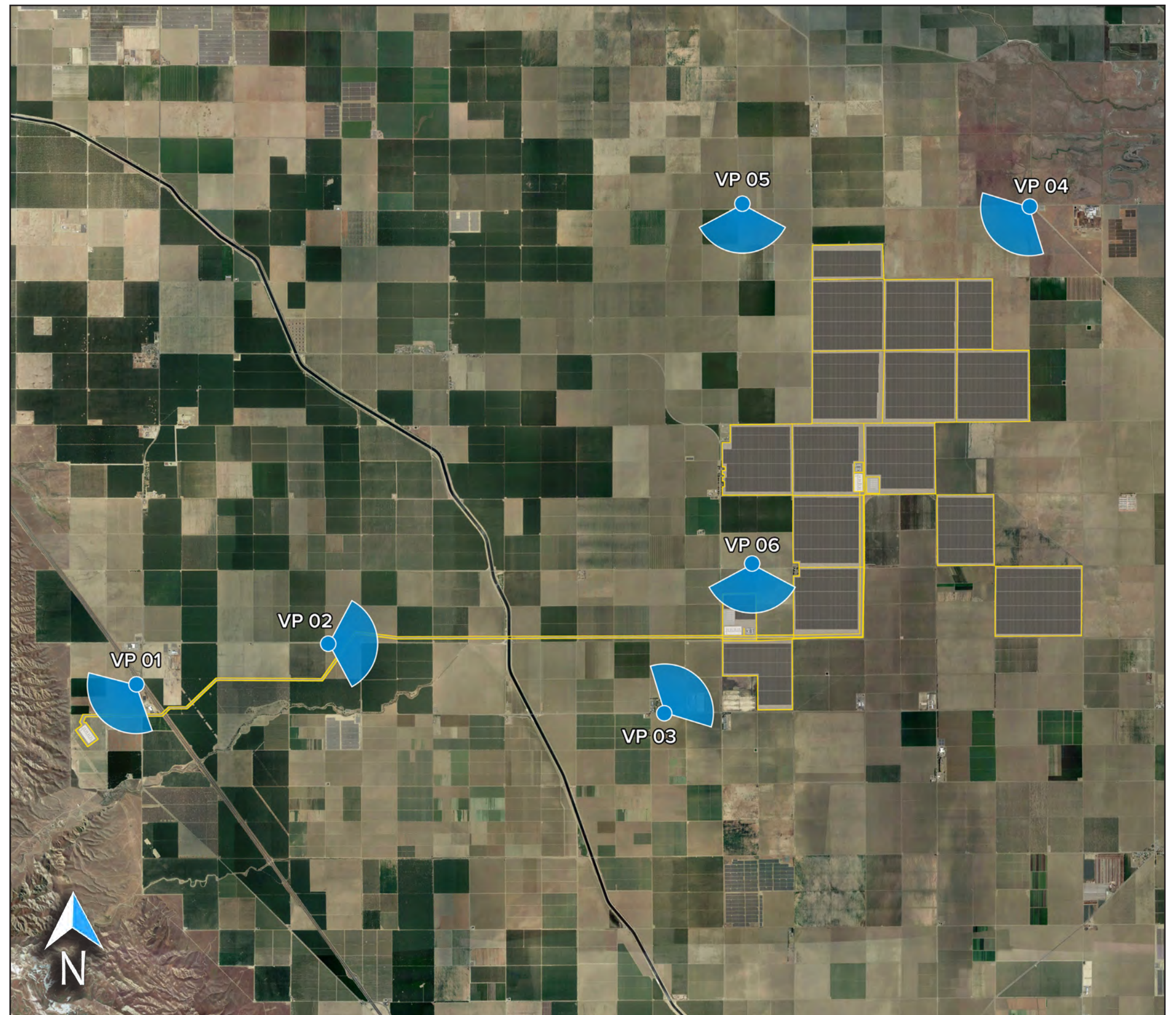
**Viewpoint 2** - W Harlan Ave - Corner

**Viewpoint 3** - W Mt Whitney Ave - Residences

**Viewpoint 4** - S. Yuba Avenue & W. Kamm Avenue

**Viewpoint 5** - W Kamm Ave

**Viewpoint 6** - W Cerini Ave - Residences





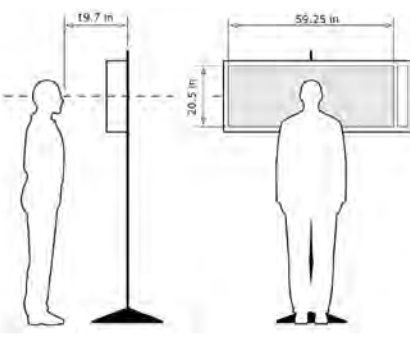


Viewpoint 1 - S Derrick Ave & West Side Fwy, Looking Southeast - Existing View

For on-screen display:  
Scale bar to be 4 inches wide  
Viewing distance 19.7 inches



Easting Position: 120.394500°  
Northing Position: 36.434767°  
Elevation of Viewpoint Position (MAD83): 504.5  
Height of Camera Above Ground (ft): 5.58  
Date of Photography: 16-Aug-23 at 5:06 pm  
Orientation of View: SW  
Horizontal Field of View: 124°  
Vertical Field of View: 55°





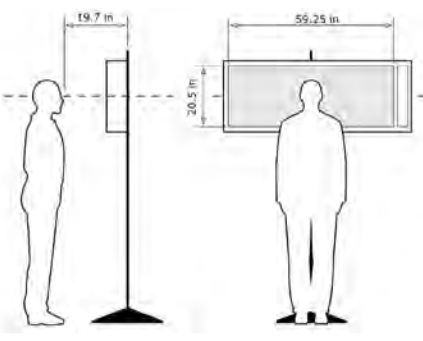


Viewpoint 1 - S Derrick Ave & West Side Fwy, Looking Southeast - Proposed View

For on-screen display:  
Scale bar to be 4 inches wide  
Viewing distance 19.7 inches



Easting Position: 120.394500°  
Northing Position: 36.434767°  
Elevation of Viewpoint Position (MAD3): 504.5  
Height of Camera Above Ground (ft): 5.58  
Date of Photography: 16-Aug-23 at 5:06 pm  
Orientation of View: SW  
Horizontal Field of View: 124°  
Vertical Field of View: 55°








Viewpoint 1 - S Derrick Ave & West Side Fwy, Looking Southeast - Proposed Overlay View

For on-screen display:  
Scale bar to be 4 inches wide  
Viewing distance 19.7 inches




Project Darden

**Viewpoint 1**  
S Derrick Ave & West Side Fwy  
Looking Southeast

Viewpoint Location

Project Area



Easting Position:120.394500°

Northing Position:36.434767°

Elevation of Viewpoint Position (MAD3):504.5

Height of Camera Above Ground (ft):5.58

Date of Photography:16-Aug-23 at 5:06 pm

Orientation of View:SW

Horizontal Field of View:124°

Vertical Field of View:55°

CORRECT VIEWING OF TRUEVIEW™ PHOTO SIMULATIONS

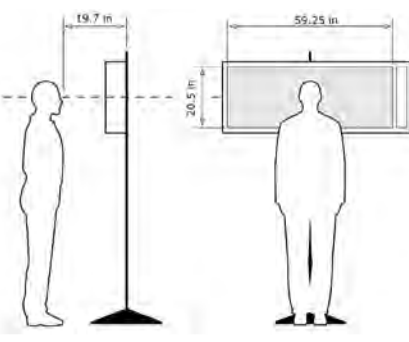


Photo Simulation Created Using  
TrueView™ Technology  
(Patent No.: US 6,184,906 B2)  
Provided by

**Truescape®**  
truescape.com



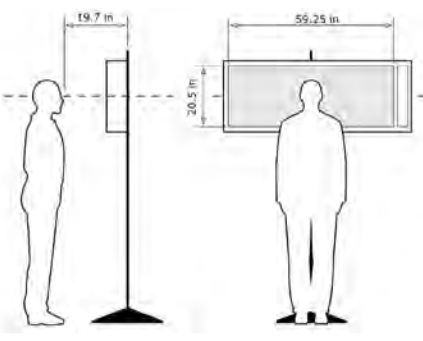


Viewpoint 1 - S Derrick Ave & West Side Fwy, Looking Southeast - Proposed View with Crop Outline

For on-screen display:  
Scale bar to be 4 inches wide  
Viewing distance 19.7 inches



Easting Position: 120.394500°  
Northing Position: 36.434767°  
Elevation of Viewpoint Position (MAD83): 504.5  
Height of Camera Above Ground (ft): 5.58  
Date of Photography: 16-Aug-23 at 5:06 pm  
Orientation of View: SW  
Horizontal Field of View: 124°  
Vertical Field of View: 55°







For on-screen display:  
Scale bar to be 4 inches wide  
Viewing distance 19.7 inches





For on-screen display:  
Scale bar to be 4 inches wide  
Viewing distance 19.7 inches





For on-screen display:  
Scale bar to be 4 inches wide  
Viewing distance 19.7 inches





Viewpoint 2 - W Harlan Ave - Corner, Looking East - Existing View

For on-screen display:  
Scale bar to be 4 inches wide  
Viewing distance 19.7 inches



Project Darden

Viewpoint 2  
W Harlan Ave - Corner  
Looking East

Viewpoint Location    Project Area



Easting Position: 120.346257'  
Northing Position: 36.443098'  
Elevation of Viewpoint Position (MAD83): 399.8  
Height of Camera Above Ground (ft): 5.58  
Date of Photography: 16-Aug-23 at 11:47 am  
Orientation of View: E  
Horizontal Field of View: 124°  
Vertical Field of View: 55°

CORRECT VIEWING OF TRUEVIEW™ PHOTO SIMULATIONS

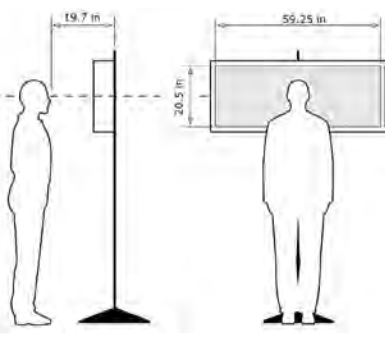


Photo Simulation Created Using  
TrueView™ Technology  
(Patent No.: US 6,184,906 B2)  
Provided by

Truescape®  
truescape.com





Viewpoint 2 - W Harlan Ave - Corner, Looking East - **Proposed View**

For on-screen display:  
Scale bar to be 4 inches wide  
Viewing distance 19.7 inches



Project Darden

**Viewpoint 2**  
W Harlan Ave - Corner  
Looking East

Viewpoint Location    Project Area



Easting Position: 120.346257'  
Northing Position: 36.443098'  
Elevation of Viewpoint Position (MAD83): 399.8  
Height of Camera Above Ground (ft): 5.58  
Date of Photography: 16-Aug-23 at 11:47 am  
Orientation of View: E  
Horizontal Field of View: 124°  
Vertical Field of View: 55°

CORRECT VIEWING OF TRUEVIEW™ PHOTO SIMULATIONS

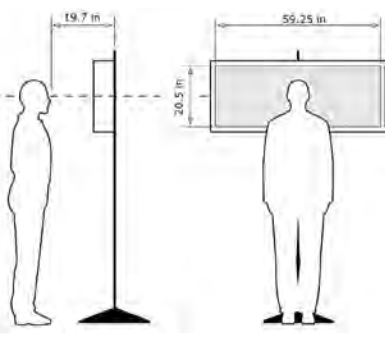


Photo Simulation Created Using  
TrueView™ Technology  
(Patent No.: US 6,184,906 B2)  
Provided by







Viewpoint 2 - W Harlan Ave - Corner, Looking East - **Proposed Overlay View**

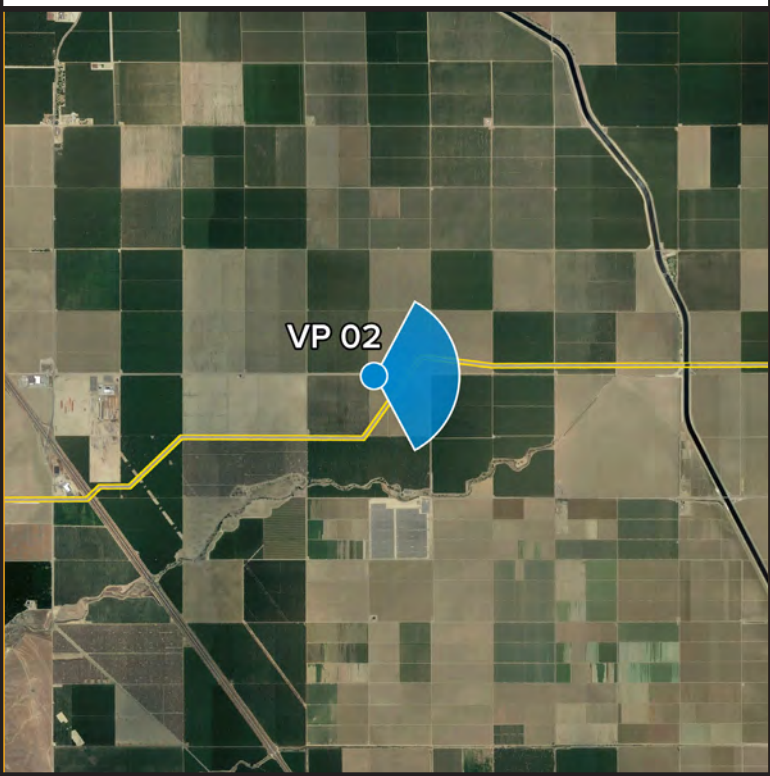
For on-screen display:  
Scale bar to be 4 inches wide  
Viewing distance 19.7 inches



Project Darden

**Viewpoint 2**  
W Harlan Ave - Corner  
Looking East

Viewpoint Location    Project Area



Easting Position: 120.346257"  
Northing Position: 36.443098"  
Elevation of Viewpoint Position (MAD83): 399.8  
Height of Camera Above Ground (ft): 5.58  
Date of Photography: 16-Aug-23 at 11:47 am  
Orientation of View: E  
Horizontal Field of View: 124°  
Vertical Field of View: 55°

CORRECT VIEWING OF TRUEVIEW™ PHOTO SIMULATIONS

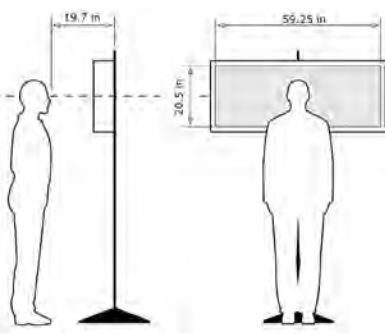


Photo Simulation Created Using  
TrueView™ Technology  
(Patent No.: US 6,184,906 B2)  
Provided by

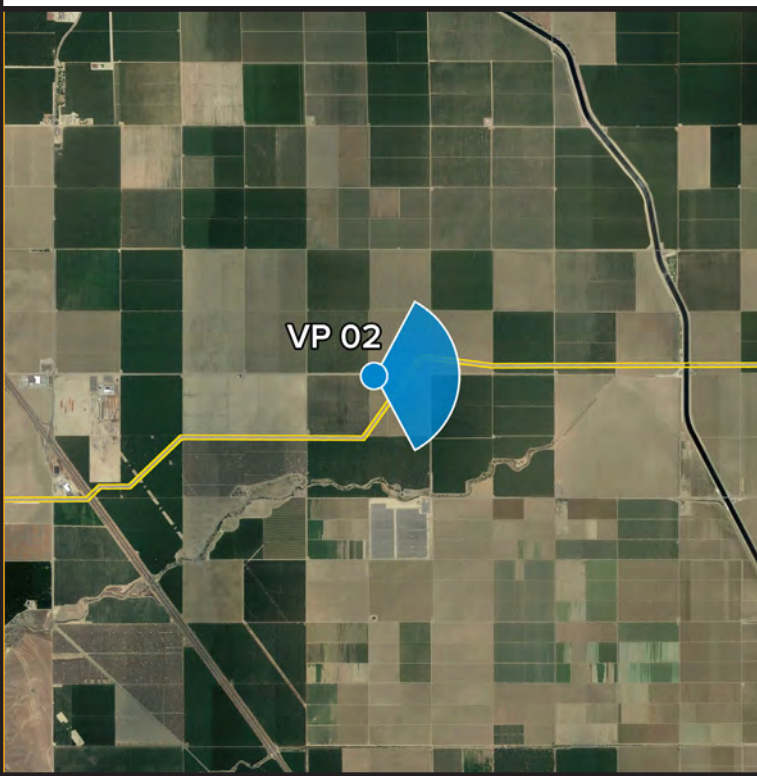
**Truescape®**  
truescape.com



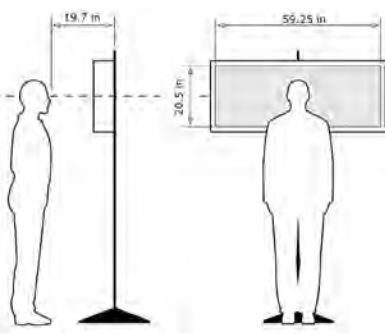


Viewpoint 2 - W Harlan Ave - Corner, Looking East - **Proposed View with Crop Outline**

For on-screen display:  
Scale bar to be 4 inches wide  
Viewing distance 19.7 inches



Easting Position: 120.346257'  
Northing Position: 36.443098'  
Elevation of Viewpoint Position (MAD83): 399.8  
Height of Camera Above Ground (ft): 5.58  
Date of Photography: 16-Aug-23 at 11:47 am  
Orientation of View: E  
Horizontal Field of View: 124°  
Vertical Field of View: 55°







For on-screen display:  
Scale bar to be 4 inches wide  
Viewing distance 19.7 inches





For on-screen display:  
Scale bar to be 4 inches wide  
Viewing distance 19.7 inches





For on-screen display:  
Scale bar to be 4 inches wide  
Viewing distance 19.7 inches





Viewpoint 3 - W Mt Whitney Ave - Residences, Looking Northeast - Existing View

For on-screen display:  
Scale bar to be 4 inches wide  
Viewing distance 19.7 inches



Easting Position: 120.263092'  
Northing Position: 36.428922'  
Elevation of Viewpoint Position (MAD83): 280.5  
Height of Camera Above Ground (ft): 5.58  
Date of Photography: 16-Aug-23 at 10:56 am  
Orientation of View: NE  
Horizontal Field of View: 124°  
Vertical Field of View: 55°

CORRECT VIEWING OF TRUEVIEW™ PHOTO SIMULATIONS

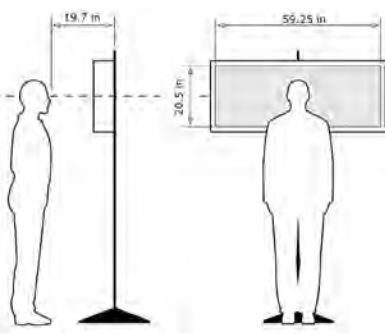


Photo Simulation Created Using  
TrueView™ Technology  
(Patent No.: US 6,184,906 B2)  
Provided by





Viewpoint 3 - W Mt Whitney Ave - Residences, Looking Northeast - **Proposed View**

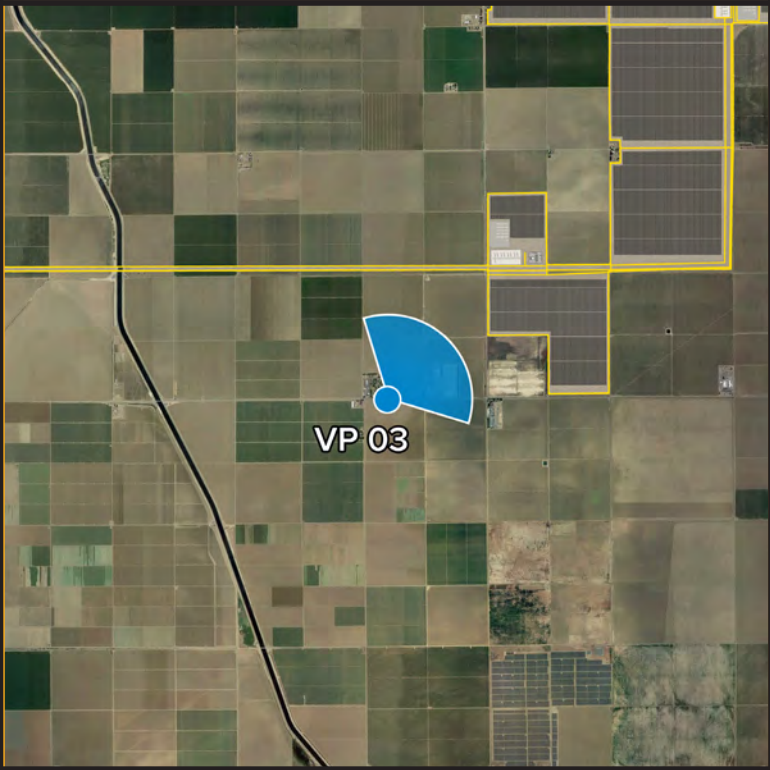
For on-screen display:  
Scale bar to be 4 inches wide  
Viewing distance 19.7 inches



Project Darden

**Viewpoint 3**  
W Mt Whitney Ave - Residences  
Looking Northeast

Viewpoint Location    Project Area



Easting Position: 120.263092'  
Northing Position: 36.428922'  
Elevation of Viewpoint Position (MAD83): 280.5  
Height of Camera Above Ground (ft): 5.58  
Date of Photography: 16-Aug-23 at 10:56 am  
Orientation of View: NE  
Horizontal Field of View: 124°  
Vertical Field of View: 55°

CORRECT VIEWING OF TRUEVIEW™ PHOTO SIMULATIONS

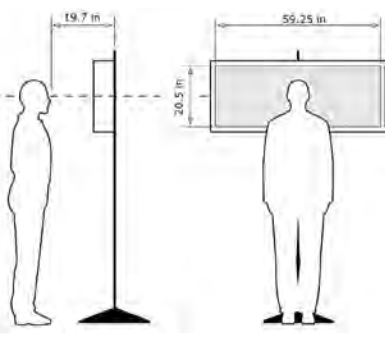


Photo Simulation Created Using  
TrueView™ Technology  
(Patent No.: US 6,184,906 B2)  
Provided by

**Truescape®**  
truescape.com





Viewpoint 2 - W Harlan Ave - Corner, Looking East - Proposed Overlay View

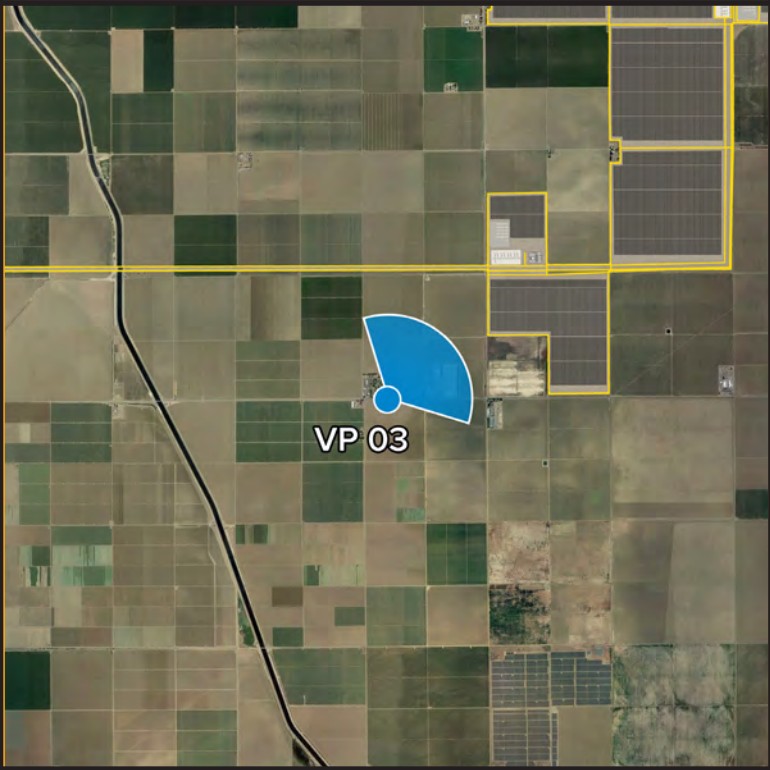
For on-screen display:  
Scale bar to be 4 inches wide  
Viewing distance 19.7 inches



Project Darden

Viewpoint 3  
W Mt Whitney Ave - Residences  
Looking Northeast

Viewpoint Location    Project Area



Easting Position: 120.263092'  
Northing Position: 36.428922'  
Elevation of Viewpoint Position (MAD83): 280.5  
Height of Camera Above Ground (ft): 5.58  
Date of Photography: 16-Aug-23 at 10:56 am  
Orientation of View: NE  
Horizontal Field of View: 124°  
Vertical Field of View: 55°

CORRECT VIEWING OF TRUEVIEW™ PHOTO SIMULATIONS

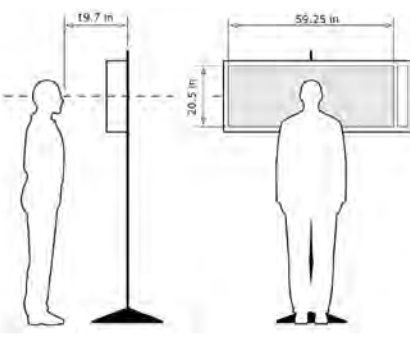


Photo Simulation Created Using  
TrueView™ Technology  
(Patent No.: US 6,184,906 B2)  
Provided by

Truescape®  
truescape.com