

DOCKETED	
Docket Number:	23-OPT-02
Project Title:	Darden Clean Energy Project
TN #:	260642
Document Title:	Updated Project Description December 2024
Description:	This updated project description incorporates changes to the project including the removal of the hydrogen facility and removal of the Option 2 location for the BESS, substation, and O&M facilities. Information from data request responses has also been incorporated where appropriate.
Filer:	Becky Moores
Organization:	Intersect Power
Submitter Role:	Applicant
Submission Date:	12/13/2024 3:07:15 PM
Docketed Date:	12/13/2024

2 Project Description

Table of Contents

2	Project Description	2-1
2.1	Generating Facility Description, Design, and Operation.....	2-1
2.1.1	Project Location	2-1
2.1.2	Site Arrangement and Layout.....	2-2
2.1.3	Solar Facility Description	2-5
2.1.4	Battery Energy Storage System Description	2-7
2.1.5	Operations Methods and Activities	2-8
2.1.6	Water Supply and Use	2-10
2.1.7	Stormwater and Drainage	2-11
2.1.8	Waste Management	2-11
2.1.9	Management of Hazardous Materials.....	2-12
2.1.10	Fire Protection	2-13
2.1.11	Emergency Power	2-14
2.1.12	Auxiliary Systems	2-14
2.1.13	Safety	2-15
2.1.14	Generation Site and Facilities Selection	2-15
2.2	Transmission and Interconnection Description, Design, and Operation	2-15
2.2.1	Affected Systems	2-24
2.2.2	Generation-Intertie Description	2-24
2.2.3	Step-Up Substation	2-27
2.2.4	Utility-Owned High-Voltage Switchyard Description	2-27
2.2.5	Transmission Facilities Selection	2-28
2.3	Project Construction	2-28
2.3.1	Solar Facility and Step-Up Substation Construction Methods and Activities.....	2-29
2.3.2	Battery Energy Storage System Construction Methods and Activities	2-30
2.3.3	Gen-tie Construction Methods and Activities	2-30
2.3.4	Utility Switchyard Construction Methods and Activities.....	2-31
2.3.5	Commissioning.....	2-32
2.4	References	2-33

Tables

Table 2-1	Operational Water Demands.....	2-10
Table 2-2	PG&E Downstream Network Upgrades	2-25
Table 2-3	Preliminary Construction Schedules.....	2-29

Figures

Figure 2-1 Regional Location..... 2-3

Figure 2-2 Project Site and Components 2-4

Figure 2-3a Existing Transmission Lines Within 1 Mile of the Project Site Overview..... 2-16

Figure 2-3b Existing Transmission Lines Within 1 Mile of the Project Site (Mapbook Page 2) 2-17

Figure 2-3c Existing Transmission Lines Within 1 Mile of the Project Site (Mapbook Page 3) 2-18

Figure 2-3d Existing Transmission Lines Within 1 Mile of the Project Site (Mapbook Page 4) 2-19

Figure 2-3e Existing Transmission Lines Within 1 Mile of the Project Site (Mapbook Page 5) 2-20

Figure 2-3f Existing Transmission Lines Within 1 Mile of the Project Site (Mapbook Page 6) 2-21

Figure 2-3g Existing Transmission Lines Within 1 Mile of the Project Site (Mapbook Page 7) 2-22

Figure 2-3h Existing Transmission Lines Within 1 Mile of the Project Site (Mapbook Page 8) 2-23

2 Project Description

IP Darden I, LLC and Affiliates¹ (Applicant), wholly owned subsidiaries of Intersect Power, LLC, propose to construct, operate, and eventually repower or decommission the Darden Clean Energy Project (Project) on approximately 9,500 acres in western Fresno County (Figure 2-1 and Figure 2-2). The Project would operate 7 days a week, 365 days a year, with an up to 35-year² anticipated lifespan. The primary Project components are:

- 1,150 megawatt (MW) solar photovoltaic (PV) facility (solar facility)
- Up to 4,600 MW-hour battery energy storage system (BESS)
- 34.5-500 kilovolt (kV) grid step-up substation (step-up substation)
- 15-mile 500 kV generation intertie (gen-tie) line
- Pacific Gas and Electric Company (PG&E)-owned 500 kV utility switchyard along the Los Banos-Midway #2 500 kV transmission line

The Project site and related facilities were selected taking into consideration the Project objectives, engineering constraints, site geology, environmental impacts, water, waste and fuel constraints, and electric transmission constraints, among other factors. A detailed discussion of site selection is provided in Chapter 6, *Alternatives*.

2.1 Generating Facility Description, Design, and Operation

The generating facility includes a 1,150 MWac (1,610 MWdc) solar facility with appurtenant facilities including an up to 4,600 MW-hour BESS. Section 2.1.2 summarizes the general site arrangement and layout of the Project while Sections 2.1.3 and 2.1.4 provide a description of each of the generating facility components.

2.1.1 Project Location

The Project site is located in an agricultural area of unincorporated Fresno County south of the community of Cantua Creek. The solar facility, BESS, and substation would be located on approximately 9,100 acres of land currently owned by Westlands Water District, between South Sonoma Avenue to the west and South Butte Avenue to the east. The Project's approximately 15-mile gen-tie line would span west from the intersection of South Sonoma Avenue and West Harlan Avenue to immediately west of Interstate 5, where it would connect to the new utility switchyard along PG&E's Los Banos-Midway #2 500 kV transmission line. Figure 2-1 shows the regional location of the Project.

¹ "Affiliates" means IP Darden II, LLC, IP Darden III, LLC, IP Darden IV, LLC, IP DardenV, LLC, IP Darden VI, LLC, IP Darden VII, LLC, IP Darden VIII, LLC, and IP Darden BAAH, LLC. IP Darden I, LLC and Affiliates are indirect subsidiaries of Intersect Power, LLC.

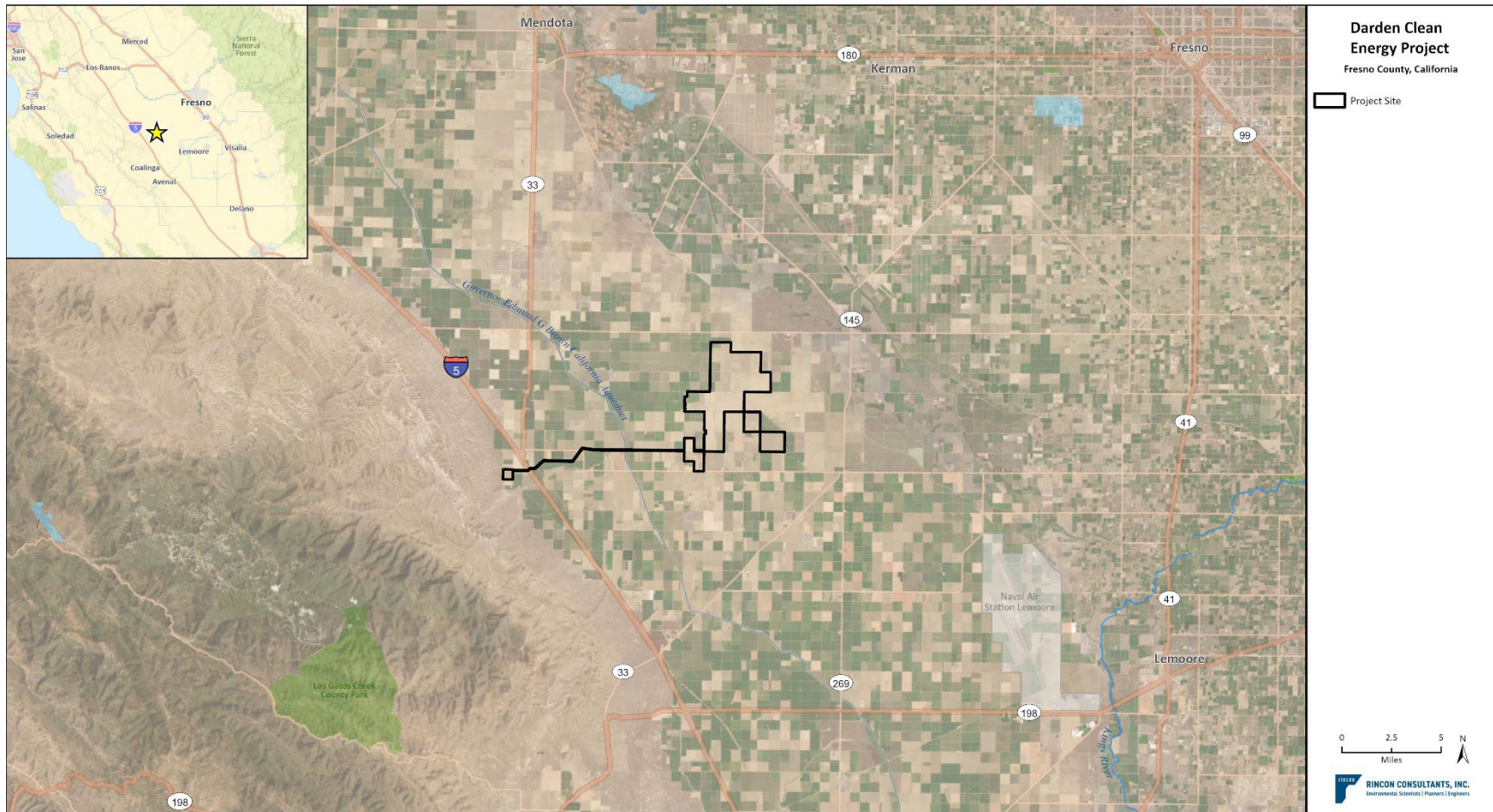
² After 35 years, the Project would be repowered or decommissioned.

2.1.2 Site Arrangement and Layout

Figure 2-2 shows the Project site plan and location of the solar facility BESS, step-up substation, gen-tie line, and utility switchyard, which are discussed in Section 2.2.³ The gen-tie line would extend from the solar facility west to the proposed utility switchyard along PG&E's Los Banos-Midway #2 500 kV transmission line. The Executive Summary includes a mapbook that shows the Project parcels, section, township, and range, as well as the proposed locations of the Project components. Appendix A contains a list of property owners. Section 5.5, *Visual Resources*, includes photo simulations of the Project. In addition, Appendix F contains scale plan and elevation drawings depicting the relative size and location of all facilities that were used to create Project visual simulations.

³ Two options were initially considered for the location of the BESS, O&M facilities, and step-up substation (Option 1 and Option 2). As of December 2024, Option 1 was confirmed to be the selected location for these Project components and Option 2 is no longer being considered. Discussion of Option 2 has been removed from this Project Description. However, for ease of reference across the Opt-In Application materials, the figures still reference the confirmed location of the components as Option 1.

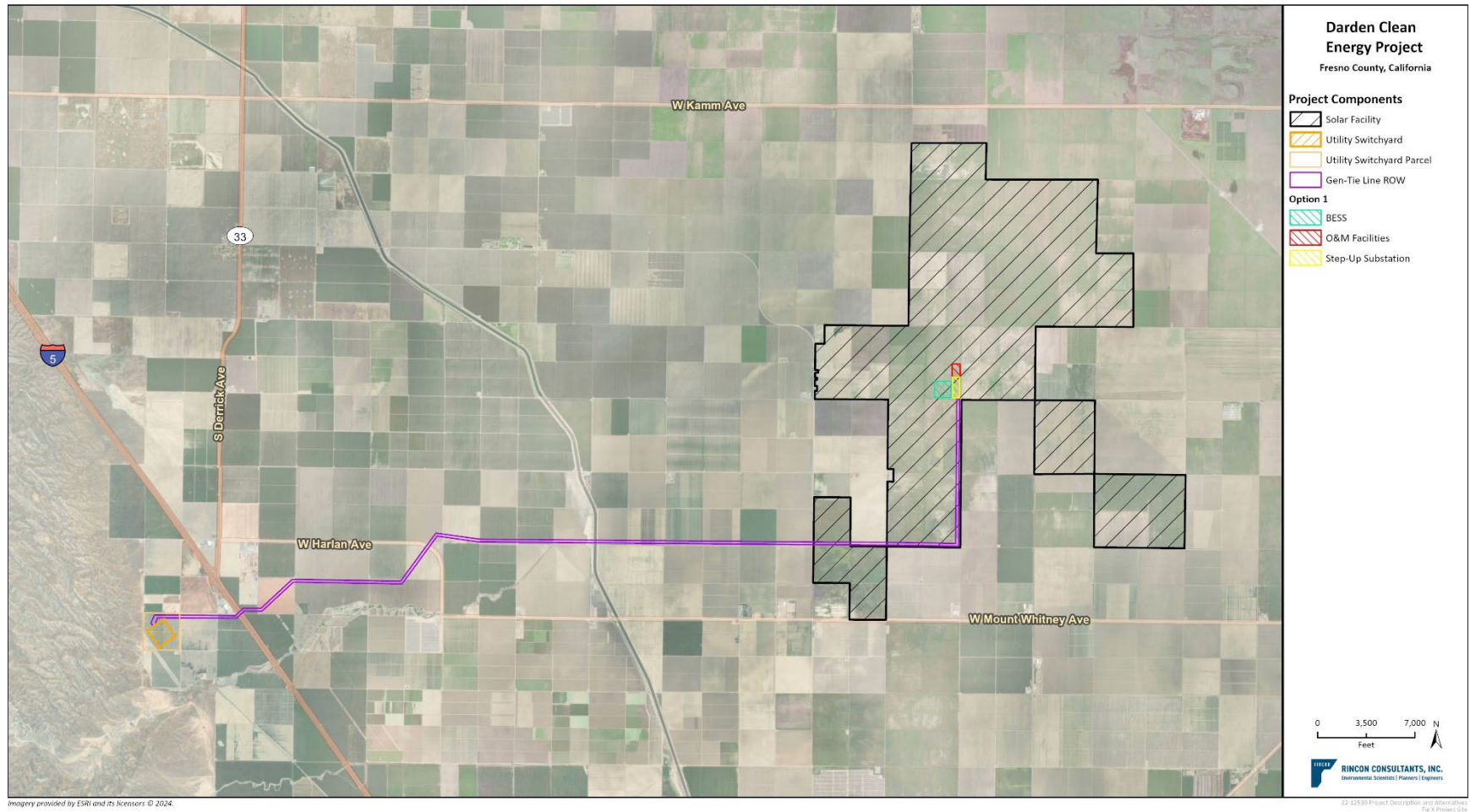
Figure 2-1 Regional Location



Imagery provided by ESRI and its licensors. © 2024.

22-12530-Project Description and Alternatives
Fig. 2-1 Regional Location

Figure 2-2 Project Site and Components



Imagery provided by ESRI and its licensors. © 2024.

2.1.3 Solar Facility Description

2.1.3.1 Solar Facility Project Objectives

The Applicant's objectives for the solar facility are as follows:

1. Design, construct, and operate the facility in a manner that respects the local community, its values, and its economy.
2. Operate the facility in a manner that protects the safety of on-site staff and off-site members of the public.
3. Generate sales tax revenues for Fresno County by establishing a point of sale in the County for the procurement of most major Project services and equipment.
4. Create temporary and permanent living-wage, union jobs for local and regional residents.
5. Generate affordable wholesale electric power to serve the ratepayers of the Fresno County region and the State of California.
6. Significantly contribute to addressing the climate crisis by generating renewable energy to displace climate-warming fossil fuel-based generation, and in so doing, helping to create a global climate that is hospitable to future generations and wild places.
7. Substantially contribute to meeting the State of California's renewable energy policy objectives as described by the interim targets in Senate Bill (SB) 1020 to require renewable energy and zero-carbon resources to supply 90 percent of all retail electricity sales by 2035 and 95 percent of all retail electricity sales by 2040.
8. Assist the nation in meeting its Nationally Determined Contribution commitments under Article 4 of the Paris Climate Agreement to achieve a 50 to 52 percent reduction in United States (U.S.) greenhouse gas pollution from 2005 levels by 2030, and to achieve 100 percent carbon pollution-free production in the electricity sector by 2035.
9. Given the urgency of the climate crisis, site and rapidly construct a major renewable energy generation facility on contaminated lands that are poorly suited for agricultural use and where the highest and best use is long-term solar energy generation.
10. Minimize environmental impacts and land disturbance associated with solar energy development by siting the facility on relatively flat, contiguous lands with low quality habitat, high solar insolation in close proximity to existing roads and established utility corridors.
11. Create a new point of interconnection in the Central Valley along California's backbone transmission infrastructure to facilitate this Project and future generators helping meet the state's renewable energy goals.

2.1.3.2 Solar Facility Components

The solar facility layout is illustrated in Appendix F.

Overview of Solar Technology

Solar cells, also called photovoltaic (PV) cells, convert sunlight directly into electricity. PV gets its name from the process of converting light (photons) to electricity (voltage), which is called the "photovoltaic effect." PV cells are located on panels, which are mounted at a fixed angle facing south or on a tracking device that follows the sun. Many solar panels combined together in a row

and controlled by tracker motors create one system called a solar sub-array. For large electric utility or industrial applications, hundreds of solar sub-arrays are interconnected to form a utility-scale PV system.

Photovoltaic Panels and Support Structures

The solar facility would include approximately 3,100,000 solar panels. It is anticipated that the panels selected for the Project would be First Solar Series 7. The Series 7 panel utilizes First Solar's thin film technology.

The panel mounting system would depend on the market conditions and environmental factors. Either mono-facial or bi-facial panels could be used, and panels would either be mounted in a portrait orientation as single panels or mounted in a landscape orientation and stacked two high on a north-south oriented single-axis tracking system that would track the sun from east to west during the day.

Panels would be arranged in strings with a maximum height of 10 feet at full tilt or slightly higher due to topography or hydrology. Panel faces would be minimally reflective, dark in color, and highly absorptive.

The single axis tracking system would be oriented along a north/south axis with panels facing east in the early morning, lying flat during high noon, and facing west during later afternoon and evening hours.

Spacing between each row would be a minimum of 10 feet. The solar panel array would generate electricity directly from sunlight, which would be collected, converted to alternating current (AC), stored, and delivered to the on-site step-up substation.

Structures supporting the PV panels would consist of steel piles (e.g., cylindrical pipes, H-beams, helical screws, or similar structures). The piles typically would be spaced 18 feet apart. For the tracking system, piles would be installed to a height of approximately 4 to 6 feet above grade (minimum 1 foot clearance between bottom edge of panel and ground but could be higher to compensate for terrain variations and clearance for overland flow during stormwater events).

Inverters, Transformers, and Electrical Collection System

The solar facility would be designed and laid out primarily in sub-arrays of installed rows of panels, ranging in capacity from 4 to 7 MW. Each sub-array would include a direct current (DC) to AC inverter and medium voltage transformer equipment area (i.e., inverter-transformer station) measuring 40 feet by 25 feet. The color of the inverter equipment would be light colored or neutral, depending on thermal requirements and availability from the manufacturer. The inverter-transformer station would be constructed on either a concrete pad or steel skid centrally located within the surrounding rows of panels. Sub-arrays would be designed and sized as appropriate to accommodate the irregular shape of the Project footprint. The precise sub-array dimensions and configuration would be dependent on available technology and market conditions. Each inverter-transformer station would contain an inverter, a transformer, a battery enclosure, and a switchboard.

The inverter-transformer station would contain a security camera at the top of an approximately 20-foot wood or metal pole. If required based on site meteorological conditions, an inverter shade structure would be installed at each inverter-transformer station. The shade structure would consist

of wood or metal supports and a durable outdoor material shade structure (metal, vinyl, or similar). The shade structure, if utilized, would extend up to 10 feet above the ground surface.

Panels would be electrically connected into panel strings using wiring secured to the panel racking system. Underground cables would be installed to convey the DC electricity from the panels via combiner boxes or combiner harnesses with a trunk bus system located throughout the PV arrays, to inverters that would convert the DC to AC electricity. The output voltage of the inverters would be stepped up to the required collection system voltage at the medium voltage pad mount transformer located in close proximity to the inverter. The 34.5 kV level collection cables would be buried underground in a trench about 4 feet deep, with segments installed overhead on wood poles to connect all of the solar facility development areas to the on-site step-up substation, which may or may not involve an overhead or underground road crossing. Thermal specifications require 10 feet of spacing between the medium voltage lines, and in some locations closer to the step-up substation interconnection, more than 20 medium voltage AC lines run in parallel.

In locations where the collection system crosses a road or pipelines overhead, direct embedded wood poles would be used on a case-by-case basis. Wood poles spaced up to 250 feet apart could be installed on the site. The typical height of the poles would be approximately 60 to 100 feet, with an embedment depth of 10 to 15 feet depending on the type of crossing, and diameters varying from 12 to 20 inches.

2.1.4 Battery Energy Storage System Description

2.1.4.1 *Battery Energy Storage System Objectives*

The Applicant's objectives for the BESS are as follows:

1. Contribute to meeting SB 100 policy objectives with a 2045 goal of California's electricity system to be carbon free by capturing and storing renewable energy when it is plentiful and dispatching for use when it is scarce.
2. Contribute to addressing the climate crisis by firming intermittent renewable energy to displace climate-warming fossil fuel-based generation, and in so doing, help create a global climate that is hospitable to future generations and wild places.

2.1.4.2 *Battery Energy Storage System Facility Components*

BESS facilities can assist grid operators in more effectively integrating intermittent renewable resources into the statewide grid. The Project would include a battery storage system capable of storing up to 1,150 MW of electricity for 4 hours (up to 4,600 megawatt-hour), requiring up to 35 acres that would be located near the step-up substation. As shown in Figure 2-2, the battery system would be located near the step-up substation to facilitate interconnection and metering.

The storage system would consist of lithium-ion battery packs housed in electrical enclosures and buried electrical conduit. The Tesla Megapack 2 XL, a lithium iron phosphate (LFP) battery technology, is anticipated to be used for the Project. Approximately 1,220 electrical enclosures measuring approximately 40 feet or 52 feet by 8 feet and 8.5 feet high would be installed on level foundations. The enclosures would be connected to pad mount transformers that step up the battery voltage to medium voltage levels and would connect to the Project substation through feeder breakers. The layout of the BESS would entail blocks of 4 to 6 battery energy stations surrounded by access roads, with each energy station consisting of 2 to 4 battery enclosures and 1 medium voltage transformer.

Over the life of the Project the storage capacity of the battery cells will naturally degrade, and the Project would implement an augmentation strategy to maintain the contractually required capacity of the system. Augmentation would entail either a capacity maintenance approach of adding individual battery units to the existing energy stations or overbuilding the BESS by 1 to 4 percent by incorporating additional BESS containers to the system design from the start.

Battery systems would require air conditioners or heat exchangers and inverters. Up to 4 15,000-gallon water tanks for emergency use would be installed for the Project with locations based on the BESS layout and design. The size, final number, and location of water tanks for emergency use would be determined in accordance with California Fire Code (CFC) and be reviewed/approved by the local or State Fire Marshal.

The BESS would comply with the current CFC, which governs the code requirements to minimize the risk of fire and life safety hazards specific to BESS used for load shedding, load sharing and other grid services (Chapter 12 Section 1206 of the 2019 CFC). In accordance with the CFC, the battery enclosure and the site installation design are all required to be approved by the local or State Fire Marshal.

2.1.5 Operations Methods and Activities

Upon commissioning, the Project would enter the operation phase. The Project would operate 7 days a week, 365 days a year. Operational activities at the Project site would include:

- Maintaining safe and reliable solar generation and storage
- Site security
- Responding to automated electronic alerts based on monitored data, including actual versus expected tolerances for system output and other key performance metrics
- Communicating with customers, transmission system operators, and other entities involved in facility operations

2.1.5.1 Operations and Maintenance Facility

The Project would include an O&M facility area on approximately 6 acres near the step-up substation within the solar facility, which would include one to two O&M buildings to accommodate staff members, storage areas, and parking. The O&M buildings would likely be 65 feet by 80 feet and up to approximately 10,400 square feet in size. The O&M buildings would be constructed on a concrete foundation and be approximately 15 feet at its tallest point.

2.1.5.2 Operations and Maintenance Workforce

During operation of the Project, an average of 12 permanent staff associated with the solar facility would be on-site daily, with additional staff during intermittent solar panel washing (17 staff), facility maintenance and repairs (4 staff), and vegetation management activities (12 staff). Up to 4 average permanent staff associated with the BESS would be on-site daily. Off-duty Project operators may be on call to respond to specific alerts generated by the monitoring equipment at the Project site. Security personnel would be on-call. It is anticipated that permanent staff would be recruited from nearby communities in Fresno County. The O&M building would house the security monitoring equipment, including security camera feeds for monitoring the Project 24 hours per day. An equipment list for the O&M phase of the Project is provided in Section 5.7, *Air Quality*.

2.1.5.3 Site Maintenance

The Project site maintenance program would be largely conducted during daytime hours. Equipment repairs could take place in the early morning or evening when the facility would be producing the least amount of energy.

Maintenance typically would include the following: panel repairs; panel washing; maintenance of transformers, inverters, energy storage system, and other electrical equipment; road and fence repairs; and vegetation and pest management. The Applicant would recondition roads approximately once per year, as needed, such as after a heavy storm event that may cause destabilization or erosion.

Revegetation would be the primary strategy to control dust across the solar facility site. Soil binders would be used to control dust on roads and elsewhere on the solar facility site, as needed. On-site vegetation would be managed to ensure access to all areas of the site, reduce fire risk, and support wildlife habitat. A Vegetation Management Plan is provided in the Biological Resources Assessment (Appendix Q).

Solar panels would be washed as needed (up to four times each year) using light utility vehicles with tow-behind water trailers to maintain optimal electricity production. Periodic rainfall may be sufficient to remove light dust layers, which would reduce the manual washing of panels. No chemical agents would be used for typical panel washing; potential non-toxic cleaning solutions may be occasionally used. Guidance from the panel manufacturer would be followed.

O&M vehicles would include trucks (pickup and flatbed), forklifts, and loaders for routine and unscheduled maintenance and water trucks for solar panel washing. Large heavy-haul transport equipment may be brought to the solar facility infrequently for equipment repair or replacement. No helicopter use is proposed during routine operations although they may be used for emergency maintenance or repair activities.

Long-term maintenance schedules would be developed to arrange periodic maintenance and equipment replacement in accordance with manufacturer recommendations. Solar panels are warrantied for 35 years or longer and are expected to have a life of 50 or more years, with a degradation rate of 0.5 percent per year. Moving parts, such as motors and tracking panel drive equipment, motorized circuit breakers and disconnects, and inverter ventilation equipment, would be serviced on a regular basis, and unscheduled maintenance would be performed as necessary.

2.1.5.4 Drone Use

Drones may be used to perform annual thermal and visual inspections of the gen-tie line and overhead medium voltage collector line structures. The maximum drone operation heights would be restricted to 300 feet, which is higher than the maximum height of the gen-tie line structures.

Annual visual inspections are required by the North American Electric Reliability Corporation FAC-003-4 Transmission Vegetation Management and utilized for preventative maintenance to reduce risk of equipment malfunction or failure. Drone inspections would be performed once per year between September and November to avoid potential impacts to nesting native and migratory birds. A team of two Federal Aviation Administration (FAA) approved and Unmanned Aircraft System certified pilots would drive a truck on gen-tie line access roads as close to the inspection sites as is safe and feasible, park on the road, and begin the inspection. The drones used would be battery-powered *Matrice 300 RTK* or *Matrice 200 series* drones or similar and would perform the inspections between approximately 76-300 feet above ground level. Operating hours for inspections

would be between the hours of 10:00 a.m. and 3:00 p.m. The drone pilots would work in pairs with one flying and one spotting for safety. The use of drones for gen-tie infrastructure inspections would minimize the need for larger vehicles, such as bucket trucks, and no ground disturbance would occur during drone use.

2.1.6 Water Supply and Use

2.1.6.1 Construction Water

Construction of the Project would require approximately 1,100 acre-feet of water. Water demand during construction would primarily be related to dust suppression required for site preparation. Temporary sanitary facilities would be provided during construction and would not require an on-site water supply.

2.1.6.2 Operational Water and Wastewater Requirements

During operation, the total annual water supply for the Project would be approximately 35 acre-feet per year (AFY) as shown in Table 2-1. Water demand during operation of the Project would be related to the following: washing the solar panels up to four times per year; watering sheep used for vegetation management; supplying O&M facilities; and initial landscaping establishment. Section 5.13, *Water Resources*, provides additional details regarding the Project’s water requirements.

Table 2-1 Operational Water Demands

Water Use	Demand Over 35 Years (AFY)
PV Panel Washing and Vegetation Management	25
Solar Facility O&M Building and Initial Landscaping Establishment	10
Total	35

2.1.6.3 Water Quality

Section 5.13, *Water Resources*, includes a projection of the water quality based on available testing data.

2.1.6.4 Water Treatment

During operation of the Project, if needed, an appropriate size and type of water purification system will be selected for placement within the O&M building, to provide potable water for operational workers. The system would be selected based on site specific water quality parameters and may include reverse osmosis, nanofiltration, ion exchange filtration, carbon filtration, and/or ultraviolet treatment. This system would be used exclusively to provide potable water for up to an average of 16 permanent on site daily staff, including an average of 12 permanent staff associated with the solar facility and 4 permanent staff associated with the BESS. Alternatively to the water purification system, a bottled water service provider may be contracted to provide sufficient water supply for daily use at the facilities.

2.1.6.5 Water Availability

Water supply for the Project would be sourced from groundwater conferred to the Project company by Westlands Water District (WWD) in connection with the option to purchase the property. Groundwater is available in the following allocations, which are accounted for in WWD's approved Groundwater Sustainability Plan for the Westside Subbasin of the San Joaquin Valley Groundwater Basin, which underlies the Project site:

Two (2) acre-feet per 320 acres per year of operations, as follows: "...Buyer or its successors or assigns may extract two (2.0) acre-feet of groundwater per year for operation of its solar power generation facilities for each 320-acre portion of land acquired by Buyer..." (see redacted Purchase Option Agreement, Exhibit B, Section C.1(a) in Appendix L of CEC Data Request Response Set 4).

One hundred thirty (130) acre-feet per 320 acres per year of construction, as follows: "Also, during construction of the solar project facilities located on the Property, Buyer or its successors and assigns may extract an additional one hundred and thirty (130) acre-feet of groundwater per year for construction water purposes for each 320 acre portion of land acquired by Buyer..."

This water supply and its availability to meet Project needs is discussed in the Project's Water Supply Assessment in Appendix S.⁴

2.1.7 Stormwater and Drainage

The Project would include construction of solar arrays within the majority of the Project site that would be located above grade with a low maintenance mix of native/non-native grassland that would not require substantial supplemental water below the arrays, along with minimal impervious surfaces. The Project site has been modeled for site runoff in a 100-year storm event considering soil and landcover type. Project design includes detention basins placed throughout the Project site to control the rate and amount of stormwater runoff associated with each drainage area. Detailed layout maps for the proposed detention basins are provided in the 2023 Preliminary Drainage Report prepared for the Project (IP Darden I, LLC 2023) and are described in more detail in Section 5.13, *Water Resources*.

2.1.8 Waste Management

Wastes produced at the Project site would be properly collected, treated if necessary, and disposed of. Wastes include process wastewater as well as nonhazardous waste and hazardous waste, both liquid and solid. Waste management is discussed below and in more detail in Section 5.11, *Waste Management*.

2.1.8.1 Wastewater Collection, Treatment, and Disposal

During Project operation, wastewater production would be associated with permanent toilet and sanitary facilities. Sanitary facilities would either consist of portable sinks and toilets that would be regularly emptied by a permitted provider, or permanent facilities with an Onsite Wastewater Treatment System (OWTS), subject to oversight and approval by the County of Fresno Public Works and Planning Department.

⁴ Updated technical reports can be provided upon request from the California Energy Commission; however, the significance conclusions remain unchanged.

No wastewater generated through Project operations would be disposed of through discharge directly to open waterbodies.

2.1.8.2 *Solid Nonhazardous Waste*

Solid nonhazardous waste would be produced during Project construction and operation. Nonhazardous construction wastes would generally include soil, scrap wood, excess concrete, empty containers, scrap metal, insulation, and sanitary waste. Nonhazardous wastes generated during Project operation would generally include scrap metal, spent solar panels and transformer components, sanitary waste, and typical refuse generated by workers.

Construction materials would be sorted on-site throughout construction and transported to appropriate waste management facilities. Recyclable materials would be separated from non-recyclable items and stored until they could be transported to a designated recycling facility. Recycling would be in accordance with applicable California state requirements. Wooden construction waste (such as wood from wood pallets) would be sold, recycled, or chipped and composted. Other compostable materials, such as non-invasive vegetation, may also be composted off-site.

Non-hazardous construction materials that cannot be reused or recycled would likely be disposed of at a Class II/III landfill. All contractors and workers would be educated about waste sorting, appropriate recycling storage areas, and how to reduce landfill waste.

Waste management is discussed further in Section 5.11, *Waste Management*.

2.1.8.3 *Hazardous Wastes*

Hazardous waste would be produced during Project construction and operations. Hazardous construction wastes generally include small amounts of waste oil, solvents, detergents, fuels, oily rags/sorbents, and empty hazardous material containers. Hazardous wastes generated during operations generally include small amounts of waste oil, solvents, detergents, fuels, oily rags/sorbents, and spent batteries.

Several methods would be used to properly manage and dispose of hazardous wastes. In general, hazardous waste and electronic waste would not be placed in a landfill, but rather would be stored on-site for less than 90 days and would be transported to a treatment, storage, and disposal facility by a licensed hazardous waste transporter. Waste lubricating oil would be recovered and recycled by a waste oil recycling contractor. Spent lubrication oil filters would either be recycled or disposed of in a Class I landfill. Workers would be trained to handle hazardous wastes generated at the site. Chemical cleaning wastes would be temporarily stored on-site in portable tanks or sumps and disposed of off-site by an appropriate contractor in accordance with applicable regulatory requirements.

Hazardous materials management is further discussed in Section 5.9, *Hazardous Materials Handling*, and Section 5.11, *Waste Management*.

2.1.9 Management of Hazardous Materials

A variety of chemicals would be stored and used during the construction and operation of the Project. The storage, handling, and use of all chemicals will be conducted in accordance with applicable laws, ordinances, regulations, and standards. Chemicals would be stored in appropriate chemical storage facilities. Bulk chemicals would be stored in storage tanks, and most other

chemicals would be stored in returnable delivery containers. Chemical storage and chemical feed areas would be designed to contain leaks and spills. Containment pits and drain piping design would allow a full-tank capacity spill without overflowing the containment area. For multiple tanks located within the same containment area, the capacity of the largest single tank would determine the volume of the containment area and drain piping with an allowance for rainwater if applicable. Drain piping for reactive chemicals would be trapped and isolated from other drains to eliminate noxious or toxic vapors.

Personnel would use approved personal protective equipment during chemical spill containment and cleanup activities. Personnel would be properly trained in the handling of these chemicals and would be instructed in the procedures to follow in case of a chemical spill or accidental release. Adequate supplies of emergency response equipment including absorbent material would be stored on-site for spill cleanup. Also refer to Section 5.10, *Worker Safety*.

A list of the chemicals anticipated to be used on the Project site and their storage locations is provided in Section 5.9, *Hazardous Materials Handling*.

2.1.10 Fire Protection

Fire protection would be provided to limit the risk of personnel injury, property loss, and possible disruption of the electricity generated by the Project. As discussed in Section 5.10, *Worker Safety*, a Fire Protection and Prevention Plan will be implemented during both Project construction and operations. In addition, fire protection as it pertains to the Project components are discussed below.

Solar Facility

Solar arrays and PV panels are fire-resistant, as they are constructed largely of steel, glass, aluminum, or components housed within steel enclosures. As the tops and sides of the panels are constructed from glass and aluminum, PV panels are not vulnerable to ignition from wildland fires. In a wildfire situation, the panels would be rotated and stowed in a panel-up position. The rotation of the tracker rows would be controlled remotely via a wireless local area network. All trackers could be rotated simultaneously in a hazard situation. During construction, standard defensible space requirements would be maintained surrounding any welding or digging operations.

O&M Facilities

Fire safety and suppression measures, such as smoke detectors and extinguishers, would be installed and available at O&M facilities, in accordance with current CFC.

Battery Energy Storage System

The BESS enclosures are outdoors and are not “walk-in” cabinets; therefore, fire suppression is not required by the CFC. The BESS megapacks would be designed and in compliance with National Fire Protection Association (NFPA) Section 855. A hazard mitigation analysis developed by the BESS manufacturer will be provided to the local authorities and will comply with California Codes 1207.1.4.1 and 1207.1.4.2. The BESS yard will have thermal detection cameras installed externally on battery containers and will be strategically placed in optimal locations to detect fires. These cameras will be remotely monitored 24 hours a day. There will be up to four emergency 15,000-gallon water tanks for the Project, based on final layout.

The BESS equipment selected for the Project will be tested pursuant to UL 9540A standards, and the Project will be designed and built pursuant to UL and NFPA codes. The BESS equipment to be used will be tested to demonstrate that they do not require built-in smoke, gas, or fire detection or suppression devices.

The BESS equipment will be designed to minimize the risk of an over-pressure event and deflagration through the use of over-pressure vents and a sparker system. These safety features will be tested pursuant to UL 9540A standards to demonstrate their effectiveness in preventing deflagration in a large-scale fire.

2.1.11 Emergency Power

Up to three self-contained emergency backup liquid propane gas (LPG)-fired generator sets (genset) would supply emergency power to the Project substation when electric power is not available. The LPG generator for the Project substation would be used for backup power to the substation control buildings during power supply failures for climate control and charging batteries for protective systems. The gensets would be powered by an approximately 150-ekW rated engine.⁵

2.1.12 Auxiliary Systems

2.1.12.1 SCADA and Telecommunications Facilities

The facility would be designed with a comprehensive Supervisory Control and Data Acquisition (SCADA) System to allow remote monitoring of facility operation and/or remote control of critical components. The fiber optic or other cabling required for the monitoring system typically would be installed in buried conduit within the access road or planned trenching leading to a SCADA system cabinet at the on-site step-up substation for the Project site or a SCADA system cabinet within the O&M building. External telecommunications connections to the SCADA system cabinets could be provided through wireless or hard-wired connections to locally available commercial service providers.

The Project's SCADA system would interconnect to an external fiber optic network or fixed wireless service at the on-site step-up substation, and would require installation of buried fiber optic cables underground or fixed wireless antennas. External telecommunications connections to the SCADA system cabinets could be provided through wireless or hard-wired connections to locally available commercial service providers, so no additional disturbance associated with telecommunications is anticipated for the SCADA system. However, downstream network upgrades associated with the Project were identified in the California Independent System Operator (CAISO) Phase II Interconnection Study discussed in Section 2.2.1. Downstream network upgrades would include establishing microwave and fiber line communications paths to meet PG&E's communications reliability standards and support redundant communication paths for the utility switchyard.

The digital microwave pathway will utilize the utility switchyard's new approximately 120-foot to 200-foot microwave antenna tower and either existing or new microwave towers at existing substations or switchyards. PG&E proposes to install a combination of fiber lines on existing electric transmission 230-kV structures using Optical Ground Wire (OPGW) and on existing electric distribution structures using All-Dielectric Self-Supporting (ADSS). Additional details on the PG&E

⁵ These engines are expected to operate less than 100 hours per year for reliability testing and maintenance. They would only otherwise operate in an emergency requiring operation of the critical facility loads when electric power is not available. This emergency backup equipment does not need to operate for the facility to function during normal operation.

telecommunication pathways is included in the response to Data Request DR TSD-3 in Response Set 4. Fuel Types, Handling, and Use Scenarios

The Project does not require the use of fossil fuels during normal operations, with the exception of diesel that would be used for fueling equipment and LPG that would be used for the self-contained emergency backup generators. Diesel would be stored in an above ground storage tank in compliance with federal, state and local rules and regulations. LPG for refueling the emergency backup generators would not be stored on site. Also refer to Section 5.9, *Hazardous Materials Handling*.

2.1.13 Safety

The Project would be designed to maximize safe operation. Potential hazards could occur during both Project construction and operation. Facility operators would be trained in safe operation, maintenance, and emergency response procedures to minimize the risk of personal injury and damage to the facilities. Section 5.10, *Worker Safety*, provides a hazards analysis and describes Project training and safety programs.

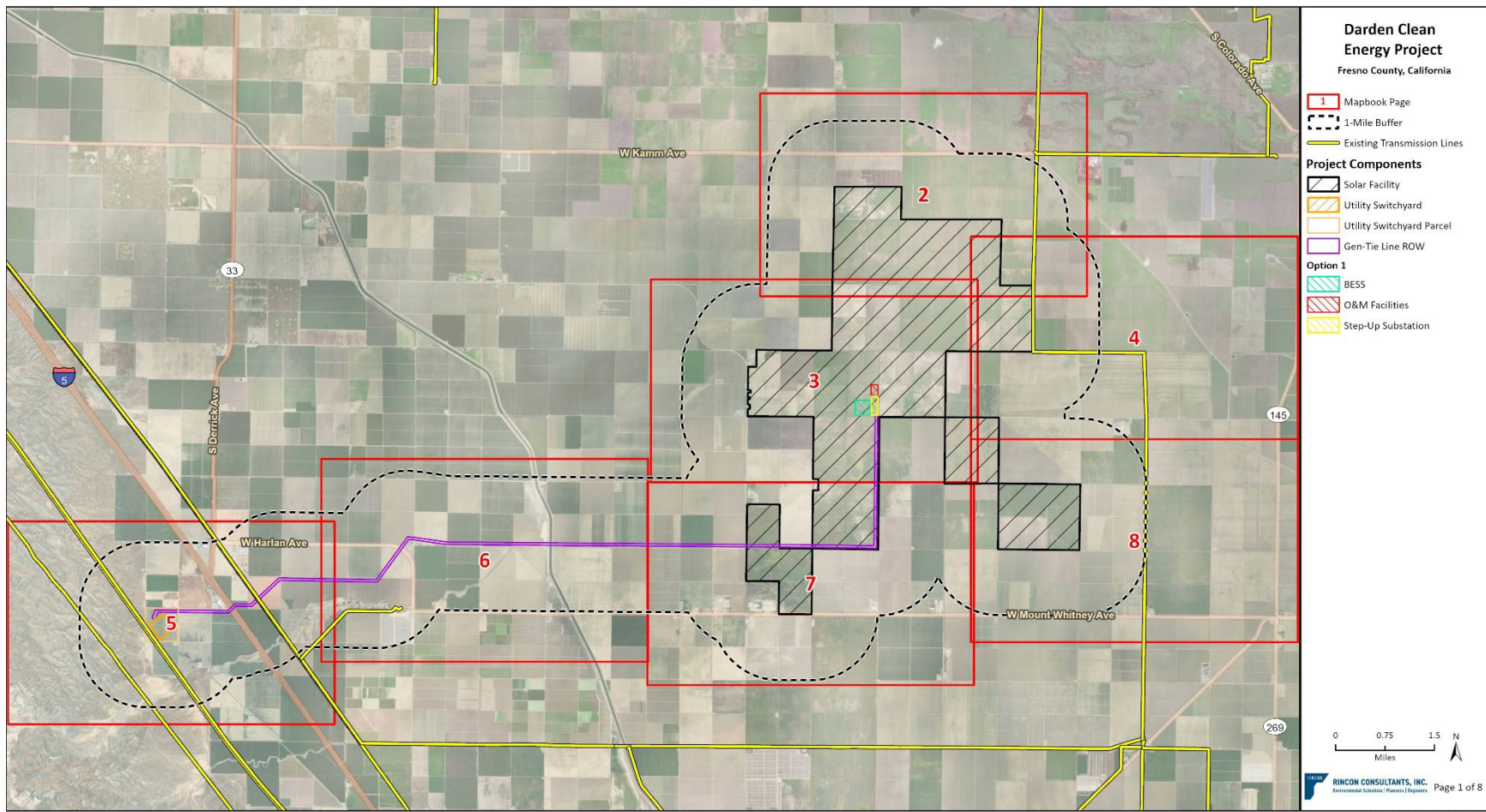
2.1.14 Generation Site and Facilities Selection

The Project site and components were selected taking into consideration engineering constraints, site geology, environmental impacts, water, waste and fuel constraints, and electric transmission constraints, among other factors. The Project site was selected in furtherance of the project objectives. The site selection criteria are discussed in detail in Chapter 6, *Alternatives*.

2.2 Transmission and Interconnection Description, Design, and Operation

The Project would be interconnected with the regional electrical grid by a new approximately 15-mile 500 kV gen tie-line with a corridor width of up to 275 feet. The final placement of the corridor and poles would be within the easements and based on engineering considerations including geotechnical results and existing infrastructure (roads, agricultural facilities, utilities, etc.). In general, the 500 kV line runs west from the Project across privately owned lands, across Interstate 5, and into the new utility switchyard, as shown in Figure 2-2. Figure 2-3a through Figure 2-3h at the end of this chapter provide a map of the proposed gen-tie route and existing transmission lines within 1 mile of the Project. There are no settled areas, parks, recreational areas, or scenic areas within one mile of the Project; therefore, these are not shown on the maps. Section 5.5, *Visual Resources*, provides photographic simulations of the Project. The design details upon which the photographic simulations are based are located in Appendix F.

Figure 2-3a Existing Transmission Lines Within 1 Mile of the Project Site Overview



Imagery provided by ESRI and its licensors. © 2024. Additional data provided by CEC, 2023.

Figure 2-3b Existing Transmission Lines Within 1 Mile of the Project Site (Mapbook Page 2)



Figure 2-3c Existing Transmission Lines Within 1 Mile of the Project Site (Mapbook Page 3)



Figure 2-3d Existing Transmission Lines Within 1 Mile of the Project Site (Mapbook Page 4)



Figure 2-3e Existing Transmission Lines Within 1 Mile of the Project Site (Mapbook Page 5)

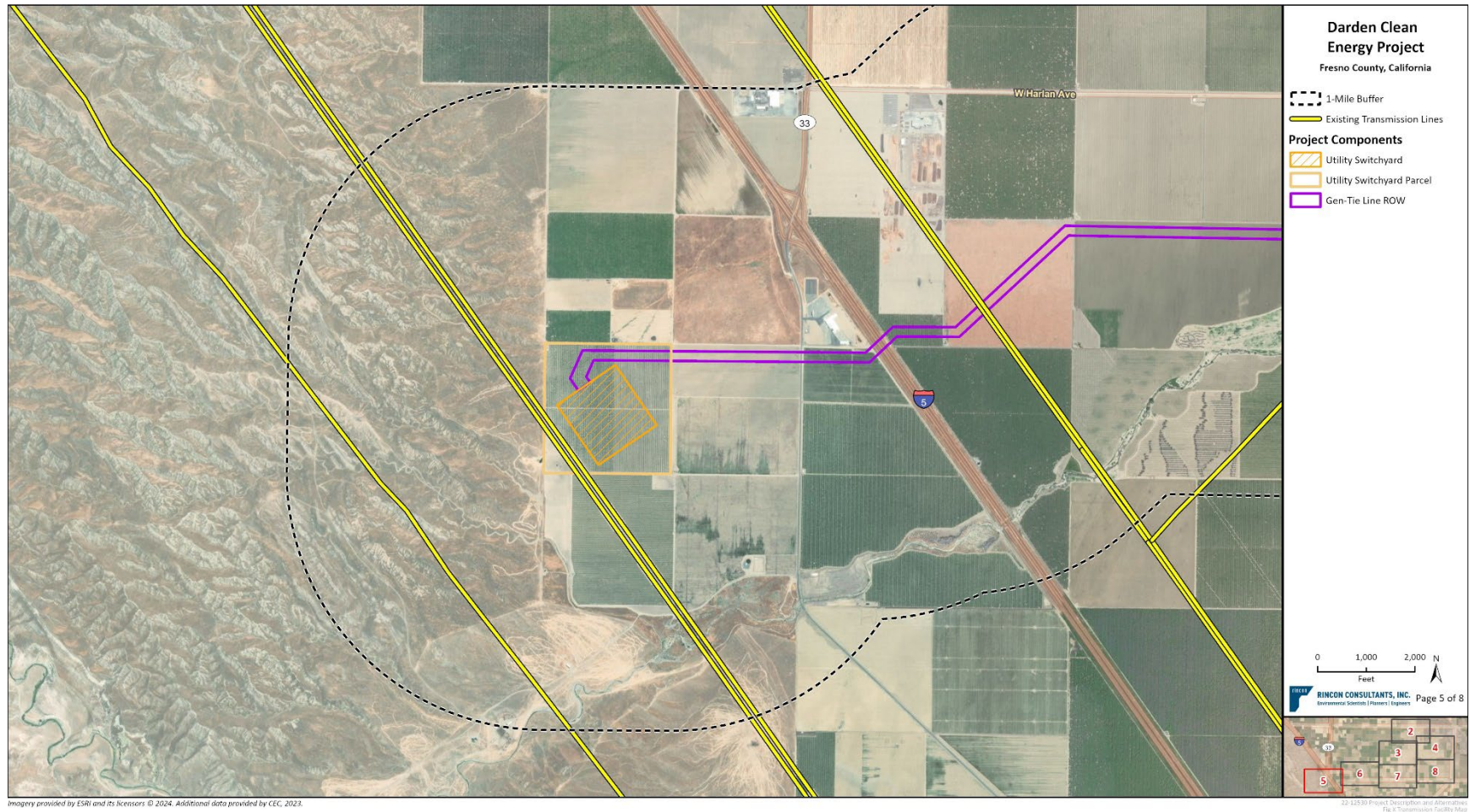


Figure 2-3f Existing Transmission Lines Within 1 Mile of the Project Site (Mapbook Page 6)

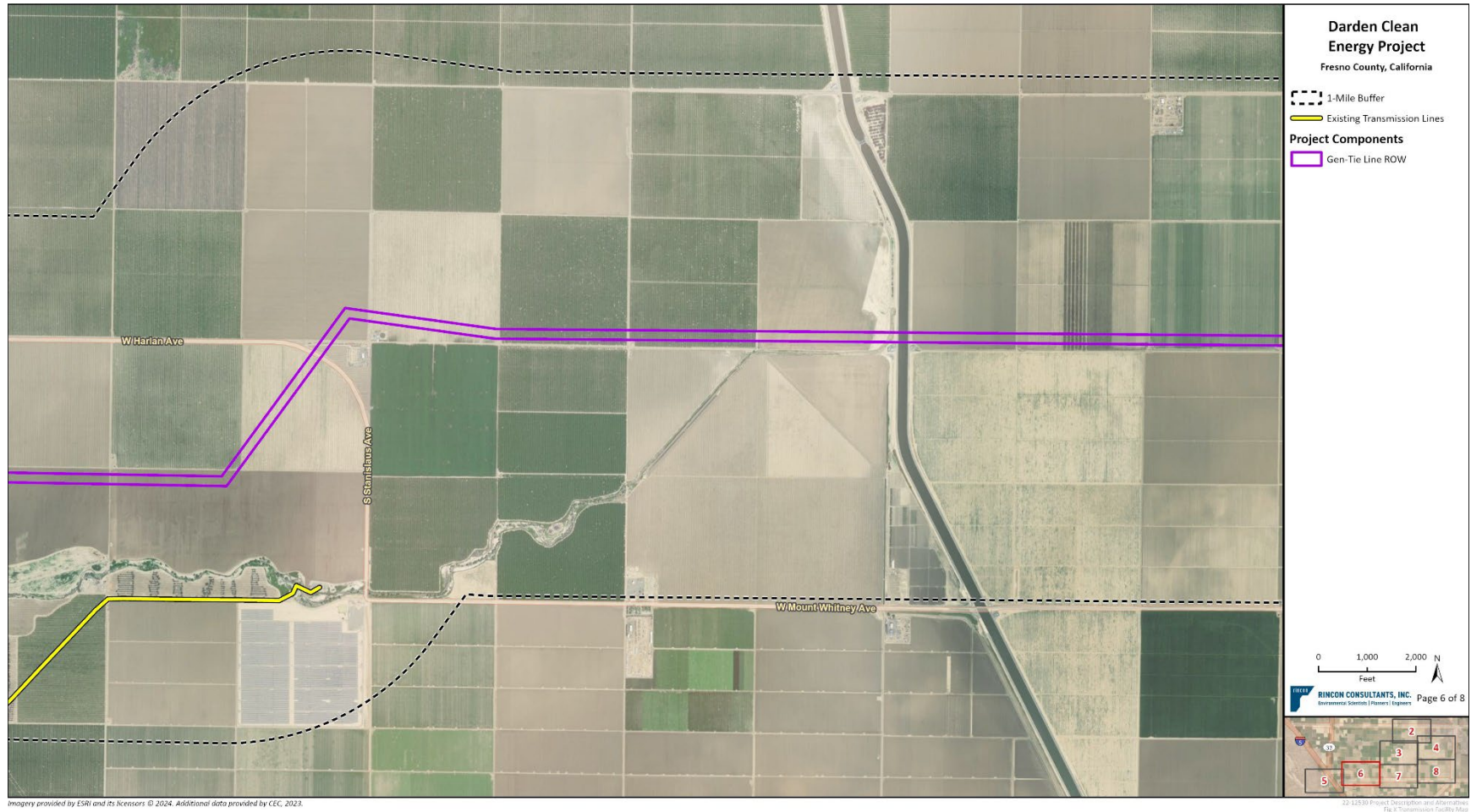


Figure 2-3g Existing Transmission Lines Within 1 Mile of the Project Site (Mapbook Page 7)



Figure 2-3h Existing Transmission Lines Within 1 Mile of the Project Site (Mapbook Page 8)



Imagery provided by ESRI and its licensors. © 2024. Additional data provided by CEC, 2023.

22-12530 Project Description and Alternatives
Fig. 2-3 Transmission Facility Map

2.2.1 Affected Systems

The Project would interconnect to PG&E's transmission system within the CAISO planning area. CAISO has identified four potential Affected Systems from the QC14 Phase I Interconnection Study: CCSF, CDWR, MID, and WAPA-SNR.

The Applicant has contacted all four potential affected systems as of August 2023. After CAISO completed and published the QC14 Phase II Interconnection Study in January 2024, conversations with the four identified systems resumed.

Table 2-2 below lists the downstream network upgrades associated with the Project that were identified in the CASIO Phase II Interconnection Study.

2.2.2 Generation-Intertie Description

The interconnecting 500 kV transmission circuit would consist of a single-circuit configuration constructed overhead. The gen-tie line would be constructed with either monopole tubular steel poles (TSPs) or steel H-frame structures. Gen-tie structures would be at least 120 feet tall, with a maximum height of 200 feet. There would be a total of approximately 80 monopole or H-frame structures, in addition to dead-end structures. The total number of gen-tie structures would be determined by the final design of the gen-tie line. The Project transmission facilities would be designed consistent with the *Suggested Practices for Avian Protection on Power Lines: The State of the Art in 2006* (Avian Power Line Interaction Committee [APLIC] 2006) where feasible. Transmission facilities would also be evaluated for potential collision reduction devices in accordance with *Reducing Avian Collisions with Power Lines: The State of Art in 2012* (APLIC 2012).

Table 2-2 PG&E Downstream Network Upgrades

Upgrade Classification	Upgrade	Description	Project Cost Allocation	CEQA Analysis
Reliability Network Upgrade (RNUs)				
Interconnection RNU- Allocated (IRNU-A)	Darden Utility Switchyard	<ul style="list-style-type: none"> ▪ See PG&E Utility Switchyard project description 	100.00%	Included as a part of the Project's application for Opt-In certification under AB 205.
IRNU-A	Los Banos Substation	<ul style="list-style-type: none"> ▪ Install a megawatt (MW) terminal and Direct Transfer Trip (DTT) scheme between the Darden Utility Switchyard and Los Banos Substation using existing IT T1 infrastructure for the communication circuits. 	100.00%	Work will occur within the fence line of the Los Banos Substation. PG&E standard Construction Measures will be implemented to ensure impacts are less than significant.
IRNU-A	Midway Substation	<ul style="list-style-type: none"> ▪ Install a DTT scheme between the Darden Utility Switchyard and Midway Substation using existing IT T1 infrastructure for the communication circuits. ▪ Remove existing shunt reactor and install a new smaller shunt reactor to maintain the level of compensation. ▪ Replace or modify line relays installed with the new control building to maintain compatibility with line relays at the Darden Utility Switchyard. 	100.00%	Work will occur within the fence line of the Midway Substation. PG&E standard Construction Measures will be implemented to ensure impacts are less than significant.
IRNU-A	Gates (or Manning) Substation	<ul style="list-style-type: none"> ▪ Modify the Series Capacitor, as required. <ul style="list-style-type: none"> ◦ A new series capacitor bank would need to be installed at Manning Substation, if that facility is built and comes online before Darden. If Darden comes online first, the series capacitor would then need to be installed at the Gates Substation instead. 	100.00%	Work will occur within the fence line of the Gates Substation. PG&E standard Construction Measures will be implemented to ensure impacts are less than significant. Or, this scope will be considered as part of the Manning Substation scope, which is being permitted under a separate California Public Utilities Commission (CPUC) formal process with proponent, LS Power.
IRNU-A	Transmission Line and Fiber Install	<ul style="list-style-type: none"> ▪ See PG&E Utility Switchyard project description 	100.00%	Included as a part of the Darden Project's application for Opt-In certification under AB 205.

Upgrade Classification	Upgrade	Description	Project Cost Allocation	CEQA Analysis
Network Upgrade Interconnection Facility (NU/IF)	Transmission Line Transposition Towers (Manning Substation Scope)	<p>A Transposition Structure will be added at approximately 8 miles and 16 miles south of the Manning Substation (two total structures) in the existing PG&E 500 kV corridor. Scope includes concrete foundations and Lattice Steel Poles or Tubular Steel Poles to transpose the line conductors.</p> <p>This upgrade is currently in the Manning Substation scope and would only be associated with the Darden Clean Energy Project if both of the following occurred:</p> <ul style="list-style-type: none"> ▪ Harlan switching station seeks in-service prior to the Manning Substation ▪ The scope currently assigned to Manning Substation cannot be scheduled ahead of the Harlan switching station’s desired in-service date 	TBD	Work is being considered as part of the Manning Substation scope, which is being permitted under a separate CPUC formal process with proponent, LS Power.
General RNU (GRNU)	Los Banos 500 kV circuit breakers 822, 832 & 842 overstress	<ul style="list-style-type: none"> ▪ Replace Los Banos 500 kV circuit breakers 822, 832 & 842 	15.17%	Work will occur within the fence line of the Los Banos Substation. PG&E standard Construction Measures will be implemented to ensure impacts are less than significant.
GRNU	Midway 500 kV CB 742, 822, 912, 942 Overstress beyond 50 kA	<ul style="list-style-type: none"> ▪ Replace Midway 500 kV circuit breakers 742, 822, 912, 942 	17.40%	Work will occur within the fence line of the Midway Substation. PG&E standard Construction Measures will be implemented to ensure impacts are less than significant.
Conditionally Assigned Network Upgrades (CANUs)				
GRNU	Midway 230 kV Bus Overstress	<ul style="list-style-type: none"> ▪ Install 2 x 16 ohm series bus reactors between Midway substation 230 kV bus sections D and E (16 ohm parallel/8 ohm net) 	6.43%	Work will occur within the fence line of the Midway Substation. PG&E standard Construction Measures will be implemented to ensure impacts are less than significant.

2.2.3 Step-Up Substation

The step-up substation would step up the medium voltage of the PV collector system from 34.5 kV to 500 kV. The step-up substation would be located on approximately 20 acres within the solar facility, as shown in Figure 2-2. The step-up substation would terminate the medium voltage solar feeders to several common medium voltage busses and transform the power at these busses to the high voltage required for transmission on the gen-tie line to the utility switchyard.

The internal arrangements for the step-up substation would include:

- Eight power and auxiliary transformers with foundations
- Prefabricated control building(s) to enclose the protection and control equipment, including relays and low voltage switchgear (each building is approximately 20 feet by 80 feet, and 10 to 20 feet high)
- Metering stand
- Capacitor bank(s)
- Nine 500 kV circuit breakers and disconnect switches
- Up to two microwave towers, approximately 18 feet by 18 feet and up to 200 feet tall, mounted with an antenna up to 15 feet in diameter
- Dead-end structure(s) up to 100 feet in height to connect the step-up substation to the grid

2.2.4 Utility-Owned High-Voltage Switchyard Description

The Applicant's objectives for the utility-owned switchyard are to construct a high-voltage electrical interconnection facility to enhance the capacity of the transmission system and allow for the delivery of wholesale renewable electricity to the statewide grid, on behalf of the regulated utility.

2.2.4.1 *Utility Switchyard Facility Components*

One utility-owned switchyard would be located on approximately 50 acres and would electrically connect the Project generation onto the utility's 500 kV transmission network. As shown in Figure 2-2, the utility switchyard would be located on the west side of the Project and serve as a termination point for the Project gen-tie and would loop into the Los Banos-Midway #2 500 kV transmission line. The utility switchyard would contain approximately five (5) 500 kV circuit breakers and will be surrounded by a new security wall or chain link barbed wire security fence up to approximately 20-feet in height with a secure gate accessible only by PG&E staff.

Structural components within the utility switchyard area would include:

- One up to 199-foot-tall free-standing digital microwave antenna (radio tower) to support SCADA communication between the switchyard and the off-site PG&E Operations Center. The foundation would either be a concrete slab of up to 50-feet by 50-feet or drilled-pier depending on the results of future soils studies. Support guy wires may be utilized if deemed necessary.
- Series capacitor banks (sizing to be determined by utility requirements).
- Approximately fifteen (15) 500 kV steel A-frame dead-end poles up to 150 feet in height with foundations approximately 20 feet deep or more.
- Busbar (a conducting bar that carries heavy currents to supply several electric circuits)

- Two (2) modular protection automation and control (MPAC) enclosure(s) approximately 150 feet by 25 feet by 12 feet tall for PG&E's substation control and protection equipment; MPAC building would be installed on a concrete foundation.
- Two (2) switchyard battery enclosure area(s) approximately 34-feet by 16-feet by 12-feet tall
- Five (5) 500 kV circuit breakers and air disconnect switches
- On-site stormwater retention pond (approximately 1,300 feet by 130 feet) for temporary run-off storage during rainfall events
- New security wall or chain link barbed wire security fence up to approximately 20-feet in height with a secure gate accessible only by PG&E staff.

2.2.4.2 *Utility Switchyard Operations*

At the completion of the switchyard, ownership would transfer to PG&E, who would assume responsibility for operation of the switchyard. It is anticipated that the switchyard would be remotely operated and maintained within PG&E's existing O&M program.

2.2.5 Transmission Facilities Selection

The selection process for transmission facilities also followed the process described in Section 2.1.14. In addition, the gen-tie route selected was the shortest possible distance connecting the Project site area to the Point of Interconnection through parcels with landowners who were interested in entering into easement agreements. Where possible, the gen-tie would abut existing roads and parcel boundaries, as well as circumvent existing landowner permanent infrastructure. All major infrastructure that the gen-tie crosses (Interstate 5, California Aqueduct, high voltage utility transmission lines) would be done so as close to perpendicular as possible. Existing land use activities within the gen-tie easement areas are consistent with the overall region; therefore, minimizing the distance of the line best reduces the overall environmental impact.

Project step-up substations are typically located to minimize the gen-tie length; however, due to the scale of this Project, preliminary design and engineering indicates that a centrally located substation reduces the footprint of the medium voltage collection lines, has a more efficient site footprint, and reduces electrical losses.

The proposed utility switchyard location is adjacent to the existing PG&E Los Banos-Midway #2 500 kV line and other existing transmission lines, which the Project, as well as future projects, would tie into.

2.3 Project Construction

This section describes construction of the overall Project, including the generating facility components and transmission components. Construction of the Project is anticipated to take 18 to 36 months to complete. Construction would begin in late 2025 or early 2026 and the Project would be operational by 2027 or 2028. The 36-month duration would require a peak workforce of approximately 1,200 and the 18-month duration would require a peak workforce of approximately 1,500. Construction would typically occur Monday through Friday from 6:00 a.m. to 7:00 p.m., but may occur seven days a week if necessary. Table 2-3 below includes the anticipated construction phases and dates for each of the construction scenarios.

Table 2-3 Preliminary Construction Schedules

Phase	18-Month			36-Month		
	Start	End	Days	Start	End	days
Phase 1: Site Preparation	12/31/2025	4/30/2026	90	12/31/2025	7/31/2026	140
Phase 2: PV Panel System	2/28/2026	6/28/2027	320	5/31/2026	6/30/2028	500
Phase 3: Inverters, Transformers, Substation, and Electrical	5/28/2026	3/28/2027	200	5/30/2027	5/30/2028	240
Phase 4: Gen-Tie	1/30/2026	6/30/2026	100	11/30/2027	5/30/2028	120
Phase 5: BESS Facility	10/28/2026	4/28/2027	120	1/30/2028	9/30/2028	160
Phase 7 ¹ : Utility Switchyard	2/28/2026	11/28/2026	180	5/31/2026	3/31/2027	200

¹ Phase 6 has been removed from the Project; however, the numbering for the remaining phases has not been changed for ease of reference across other Opt-In Application materials.

The following sections describe the construction methods and activities for the major Project components.

2.3.1 Solar Facility and Step-Up Substation Construction Methods and Activities

The PV panels would be manufactured at an off-site location and transported to the Project site. The structures supporting the PV panel arrays would consist of steel piles (e.g., cylindrical pipes, H-beams, or similar) driven into the soil using pneumatic techniques, similar to a hydraulic rock hammer attachment on the boom of a rubber-tired backhoe excavator. The piles typically are spaced 18 feet apart. Piles typically would be installed to a reveal height of approximately 4 to 6 feet above grade. Following pile installation the associated motors, torque tubes, and drivelines (if applicable) would be placed and secured. Some designs allow for PV panels to be secured directly to the torque tubes using appropriate panel clamps. A galvanized metal racking system, which secures the PV panels to the installed foundations, may be field-assembled and attached according to the manufacturer's guidelines.

DC lines from PV sub-arrays would be installed in conduits. The lines would be collected and combined and routed to the inverters to be converted to AC and stepped up to 34.5 kV via a pad mount transformer. Within the sub-arrays this wiring would typically be hung from the racking equipment. Final sections would be connected to the inverters via an underground stub.

Electrical inverters would be placed on steel skids, elevated as necessary with steel piles to allow for runoff to flow beneath the inverter structures.

Medium-voltage (34.5 kV) cabling from the inverters to the step-up substation (Section 2.2.3) would be installed either primarily underground, or overhead along panel strings in a CAB3 system to avoid the need for underground cabling and trenching, where required. At the end of panel strings, cables would be combined and routed overhead on wood poles roughly 30 to 50 feet high, depending on voltage. Trenches for the 34.5 kV collector lines would be run from the inverters to the on-site step-up substation.

Underground cables would be installed using direct bury equipment and/or ordinary trenching techniques, which typically include a rubber-tired backhoe excavator or trencher. An underground 34.5 kV line would likely be buried at a minimum of 36 inches below grade but could go as deep as 6 feet and include horizontal drilling to avoid environmental resources. Shields or trench shoring

would be temporarily installed for safety to brace the walls of the trench, if required based on the trench depth. After the excavation, cable rated for direct burial would be installed in the trench, and the excavated soil would be used to fill the trench and compress to 90 to 95 percent maximum dry density or in accordance with final engineering.

As shown in the site plan (Appendix F), the Project would achieve a minimum 50-foot buffer to adjacent properties by excluding structural improvements and equipment (excluding fencing) from within 50 feet of the outside boundary of the Project site, in accordance with the Fresno County Solar Facility Guidelines. On-site stormwater detention and treatment systems would be designed to limit stormwater-related erosion onto adjacent properties, consistent with County and State Water Resources Control Board requirements and a Pest Management Plan would be implemented to minimize the likelihood of pests (including weeds and rodents) that could impact the Project site and adjacent properties.

Construction of the O&M building and distribution line connection would likely be part of the solar facility development in tandem with the PV panel installation. The site of the O&M building would be cleared and graded, followed by installation of a concrete foundation.

2.3.2 Battery Energy Storage System Construction Methods and Activities

The BESS must be nearly level; therefore, the proposed BESS area would be cleared and graded. Site preparation would also include construction of drainage components to capture and direct stormwater flows around the BESS facility. Once the concrete foundations are in place for the BESS, the batteries, inverters, and other electrical equipment would be mounted and installed. Equipment would be delivered to the site on trucks.

2.3.3 Gen-tie Construction Methods and Activities

Minimal to no grading is anticipated due to the flat topography of the Project area. The entire gen-tie corridor would not be cleared or mowed for construction. For the overhead 500 kV line, TSP foundations would be excavated to an average depth of up to 40 feet. Installation would consist of the following basic steps:

- Deliver new poles to installation sites
- Auger new hole using line truck attachment to a depth of up to 40 feet and include concrete supports depending on final engineering
- Pour concrete foundation
- Install bottom pole section by line truck, crane, or helicopter
- Install top pole section(s) by line truck, crane, or helicopter, if required

Once poles are erected, the 500 kV conductor would be strung generally using a wire truck, crane and/or helicopter, splicing rig and puller from conductor pull and tension sites at the end of the power line. Each conductor would be pulled into place at a pre-calculated sag and then tension-clamped to the end of each insulator using sag cat and static truck/tensioner equipment. The sheaves and vibration dampers and accessories would be removed once installation is complete.

Helicopters are anticipated to be used for wire stringing activities including hanging travelers, pulling conductor and optical ground wire, dead-end activities, and the installation of bird diverters. Alternative ground-based construction activities may be utilized as appropriate. There would be one

Helicopter Landing Zone (HLZ) located in the 20-acre step-up substation laydown yard. A water truck would be on-site to water the HLZ prior to helicopter activities to prevent fugitive dust from rotor wash. Helicopter refueling would be done within the HLZ from a construction vehicle equipped as a fuel truck. Refueling would occur at one of the nearest local airports, between 2 (Five Points Ranch Airport) and 10 miles away (San Joaquin Airport), where the helicopter would be hangered overnight, before and/or after each day the helicopter is utilized. While the helicopter may land briefly within approved, existing disturbed areas on the gen-tie line to pick up equipment, materials, or personnel, no helicopter refueling would occur on private land. Helicopter activities would occur over a temporary two-month period and would occur within the typical construction hours Monday through Friday 6:00 a.m. to 7:00 p.m. A full-time avian monitor would be on-site for the full duration of helicopter activities to specifically monitor helicopter activities.

The helicopter contractor selected for helicopter operations would abide by all requirements in the Helicopter Use Plan prepared for the Project. All aircraft, pilots, linemen, and mechanics would be in full compliance with applicable Federal Aviation Administration (FAA) requirements and standards. The helicopter crew would be comprised of a qualified pilot, mechanic, and lineman required for Project activities. All linemen would be experienced journeyman lineman and would be Quanta H certified to perform tasks from the helicopter via Human External Cargo and/or from the helicopter skid. The helicopter contractor would utilize an MD-500 helicopter capable of performing light lift and other construction support operations. The flight crew would utilize very high frequency radios to communicate with the selected airport's common traffic frequency as well as ground crews within the Project and HLZs. All helicopters are equipped with geographic positioning system tracking units via Spidertracks, to track helicopter flight paths.

No helicopter use is proposed during routine operations although they may be used for emergency maintenance or repair activities.

2.3.4 Utility Switchyard Construction Methods and Activities

The Project Applicant will construct the utility switchyard and deed it to PG&E upon completion and inspection, to be owned and operated by PG&E as a public utility. Construction will occur in a phased approach beginning with site preparation and grading of the site, installing foundations and underground equipment, and then installing and testing electrical equipment. Site preparation will involve grubbing, clearing, and grading of the utility switchyard footprint (grading would be minimal due to the existing flat terrain) as well as installing the security wall or fence. Underground equipment, if necessary, will be installed in trenches and backfilled with suitable material (e.g., excavated soil or clean fill). Utility switchyard equipment will be installed on concrete foundations.

Equipment used for construction of the utility switchyard may include, but is not limited to: cranes, aerial lift, skid steer loaders, rubber tired loaders, rubber tired dozer, welders, trencher, forklift, bore/drill rig, grader, roller, tractor/loader/backhoe, haul trucks, and UTVs. Approximately 3-acre-feet of water will be used during construction of the utility switchyard, at an average of 50 to 100 gallons per day (this number is included in the overall 1,100 acre-feet of construction water needed for the Project as a whole).

Construction of the power line interconnection and other interconnection facilities will be completed by PG&E. The new structures will require permanent concrete foundations approximately 6 feet in diameter and up to 35 feet deep. Construction will involve temporary ground disturbance around each new power pole location (approximately a 50-foot radius) as well

as temporary ground disturbance associated with access to each proposed structure location (approximately a 15-foot-wide access route if there is an adequate turning radius).

2.3.5 Commissioning

Often thought of as the last phase of the construction process, once the site is completely built, the Project would go through a commissioning phase that entails energization and testing before full site operation. Commissioning of equipment would include testing, calibration of equipment, and troubleshooting. The step-up substation equipment, inverters, collector system, and PV array systems would be tested prior to commencement of commercial operations. Upon completion of successful testing, the equipment would be energized. The Project may go through commissioning in phases as sections are completed. During commissioning staff members would be driving the site performing energization procedures and troubleshooting bugs to ensure the overall health and safety of the site. Typically, heavy equipment and large crews are not needed at this point, unless repairs or part replacements are required.

2.4 References

Avian Power Line Interaction Committee. 2006 *Suggested Practices for Avian Protection on Power Lines: The State of the Art in 2006*. Available at

<https://www.nrc.gov/docs/ML1224/ML12243A391.pdf> (Accessed November 2023)

_____. 2012. *Reducing Avian Collisions with Power Lines: The State of Art in 2012*. Available at

https://www.aplic.org/uploads/files/15518/Reducing_Avian_Collisions_2012watermarkLR.pdf (Accessed November 2023).

IP Darden I, LLC. 2023. Preliminary Drainage Report. Darden Clean Energy Project. Prepared by Westwood. April.

Rincon Consultants. 2023a. *Swainson's Hawk Conservation Strategy for the Darden Green Energy Project*. 47 pp.

Rincon Consultants. 2023b. *Vegetation Management Plan for the Darden Green Energy Project*.