

DOCKETED	
Docket Number:	24-OPT-05
Project Title:	Corby Battery Energy Storage System Project
TN #:	260610
Document Title:	Federal, State, Other Agency Notice of Receipt of an Opt-In Application (24-OPT-05) & Distribution List
Description:	Federal, State, Other Agency Notice of Receipt of an Opt-In Application for the Corby Battery Energy Storage System Project (24-OPT-05) & Distribution List
Filer:	Renee Longman
Organization:	California Energy Commission
Submitter Role:	Commission Staff
Submission Date:	12/12/2024 12:03:45 PM
Docketed Date:	12/12/2024



December 6, 2024

Notice of Receipt of Opt-In Application for Corby Battery Energy Storage System Project (24-OPT-05) / request for comments and information

This letter serves as notification that the California Energy Commission (CEC) has received an opt-in application for the Corby Battery Energy Storage System Project. North Bay Interconnect, LLC and Corby Energy Storage, LLC (applicant), proposes to construct, own, and operate the Corby Battery Energy Storage System Project (project). The facility would be constructed on an approximately 40.3-acre privately owned parcel (Assessor's Parcel Number 0141-030-090) southwest of the intersection of Kilkenny Road and Byrnes Road in Solano County, California. The project would include a 300-megawatt (MW) battery energy storage system (BESS), associated project substation, inverters, and other ancillary facilities, such as fencing, sound barrier, roads, retention basins, storage containers, and a supervisory control and data acquisition (SCADA) system. The project site is currently used as agricultural land for row crops. The surrounding land is also in agricultural use, including orchards to the south, irrigated pastures to the east and west, and rural residential use to the north.

The project would connect to the Pacific Gas and Electric (PG&E) Vaca-Dixon Substation across Interstate 80 (I-80) and northwest of the project site, using an approximately 1.1-mile long 230-kilovolt (kV) generation tie (gen-tie) line, portions of which would be installed overhead and underground. The underground portion of the gen-tie line would run east-west parallel to and crossing Kilkenny Road, either within acquired easements on adjacent parcels (Underground Route Option #1) or within the Kilkenny Road right-of-way (Underground Route Option #2).

The overhead portions would include two structures on the project site, four structures between Kilkenny Road and I-80 on private land owned by the applicant, and up to four structures north of I-80 on PG&E-owned property adjacent to the Vaca-Dixon Substation, for a total of up to ten overhead gen-tie structures.

To accommodate the interconnection of the project, PG&E would install a new 230-kV Double Bus Bay structure with associated foundations and supports on approximately 0.6 acre of the existing substation. This new bay would house four switch support structures and associated equipment for the new 230-kV connection. In addition, PG&E would also construct, own, and operate the portion of the gen-tie between the point of change of ownership pole immediately south of I-80 and the first point of interconnection at the Vaca-Dixon Substation, including five of the ten structures.

The project would be unstaffed after construction, with operational control from an offsite control room through the SCADA system. Operational staff would perform periodic inspections and maintenance as necessary. The Project Description (TN 259872) section of the application can be accessed directly at the following link: <https://efiling.energy.ca.gov/GetDocument.aspx?tn=259872&DocumentContentId=96060>.

In 2022, Assembly Bill 205 established a new Opt-In Certification Program for eligible clean and renewable energy facilities to optionally seek certification through the CEC. Upon receipt of an application, the CEC has the exclusive authority to certify the site and related facility. With certain exceptions, the issuance of a certificate by the CEC is in lieu of any permit, certificate, or similar document required by any state, local, or regional agency, or federal agency to the extent permitted by federal law, and supersedes any applicable statute, ordinance, or regulation of any state, local, or regional agency, or federal agency to the extent permitted by federal law. The CEC is the lead agency under the California Environmental Quality Act and is required to prepare an environmental impact report for any facility that elects to opt into the CEC's jurisdiction. Further information about the Opt-In Certification Program can be found on the CEC website at: <https://www.energy.ca.gov/programs-and-topics/topics/power-plants/opt-certification-program>

The CEC provides the following notice pursuant to Public Resources Code section 25545.8, which states that subsections (g) and (k) of Public Resources Code section 25519 apply to an opt-in application. The relevant language from Public Resources Code section 25519 is as follows:

(g) The commission shall transmit a copy of the application to each federal and state agency having jurisdiction or special interest in matters pertinent to the proposed site and related facilities and to the Attorney General.

(k) The commission shall transmit a copy of the application to any governmental agency not specifically mentioned in this act, but which it finds has any information or interest in the proposed site and related facilities, and shall invite the comments and recommendations of each agency. The commission shall request any relevant laws, ordinances, or regulations that an agency has promulgated or administered.

The CEC has set up a webpage for the project at the following link: <https://www.energy.ca.gov/powerplant/battery-storage-system/corby-battery-energy-storage-system-project>. To stay informed about this project and receive notice of upcoming meetings and workshops, sign up to the project's email subscription, which can be accessed on the same project webpage. Once enrolled, automatic email notifications are sent when documents and notices are posted to the project webpage. The documents which comprise the opt-in application can be found in the project docket, which is accessible via the project webpage or directly at the following link: <https://efiling.energy.ca.gov/Lists/DocketLog.aspx?docketnumber=24-OPT-05>.

Pursuant to Public Resources Code section 25519(k), the CEC invites the comments and recommendations of your agency, and requests that you send us any relevant laws, ordinances, or regulations that your agency has promulgated or administered that are applicable to the proposed project.

To stay informed about this project and receive notice of upcoming public meetings, sign up to the project subscription, which can be accessed on the project webpage. Once enrolled, automatic email notifications are sent via govDelivery when documents and notices are posted to the project docket.

Feel free to reach out to us directly via email if you have any questions about this notice. Thank you.

Renee Longman
Project Manager
California Energy Commission

renee.longman@energy.ca.gov

Enclosures:

Figure 1-1 Project Vicinity (from Application TN 259872)

Figure 1-2 Site Location (from Application TN 259872)

Figure 1-3 Project Layout (from Application TN 259872)

**NextEra Energy
Corby Battery Energy
Storage System Project**

**Figure 1-1
Project Vicinity**

Solano County, CA

Proposed Features

- Gen-tie (Overhead)
- Gen-tie (Underground; 2 Options)
- Gen-tie (Overhead; PG&E)
- Project Site

Public Land Ownership

- Local Government
- Federal
- Non Profit
- Special District
- State

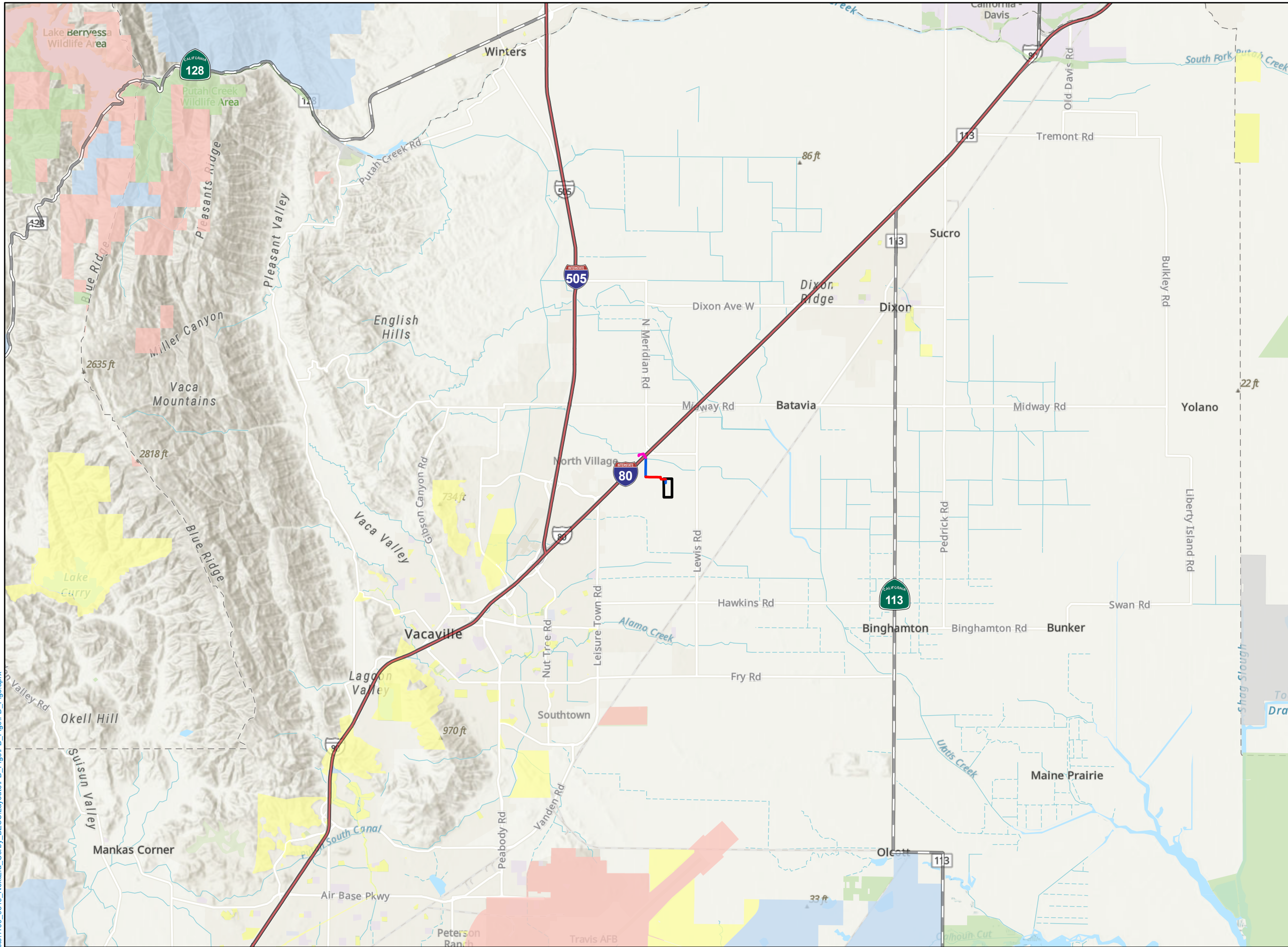
Transportation

- Interstate Highway
- State Highway



NOT FOR CONSTRUCTION

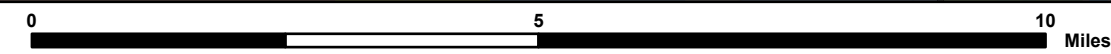
Reference Map



Z:\Projects\1109_0319_NextEra_Corby_BESS\Layouts\PD_Figs\PD_Figs.aprx



1:120,000 NAD 1983 StatePlane California II FIPS 0402 Feet



Source: ESRI, USDA NAIP, US CENSUS, BTS

**NextEra Energy
Corby Battery Energy
Storage System Project**

**Figure 1-2
Site Location**

Solano County, CA

- Applicant-Owned Parcels
- Township Range
- Section
- Proposed Features**
- Gen-tie (Overhead)
- Gen-tie (Underground; Option 1)
- Gen-tie (Underground; Option 2)
- Gen-tie (Overhead; PG&E)
- Project Site
- Transportation**
- Interstate Highway
- Road



**NOT FOR CONSTRUCTION
Reference Map**

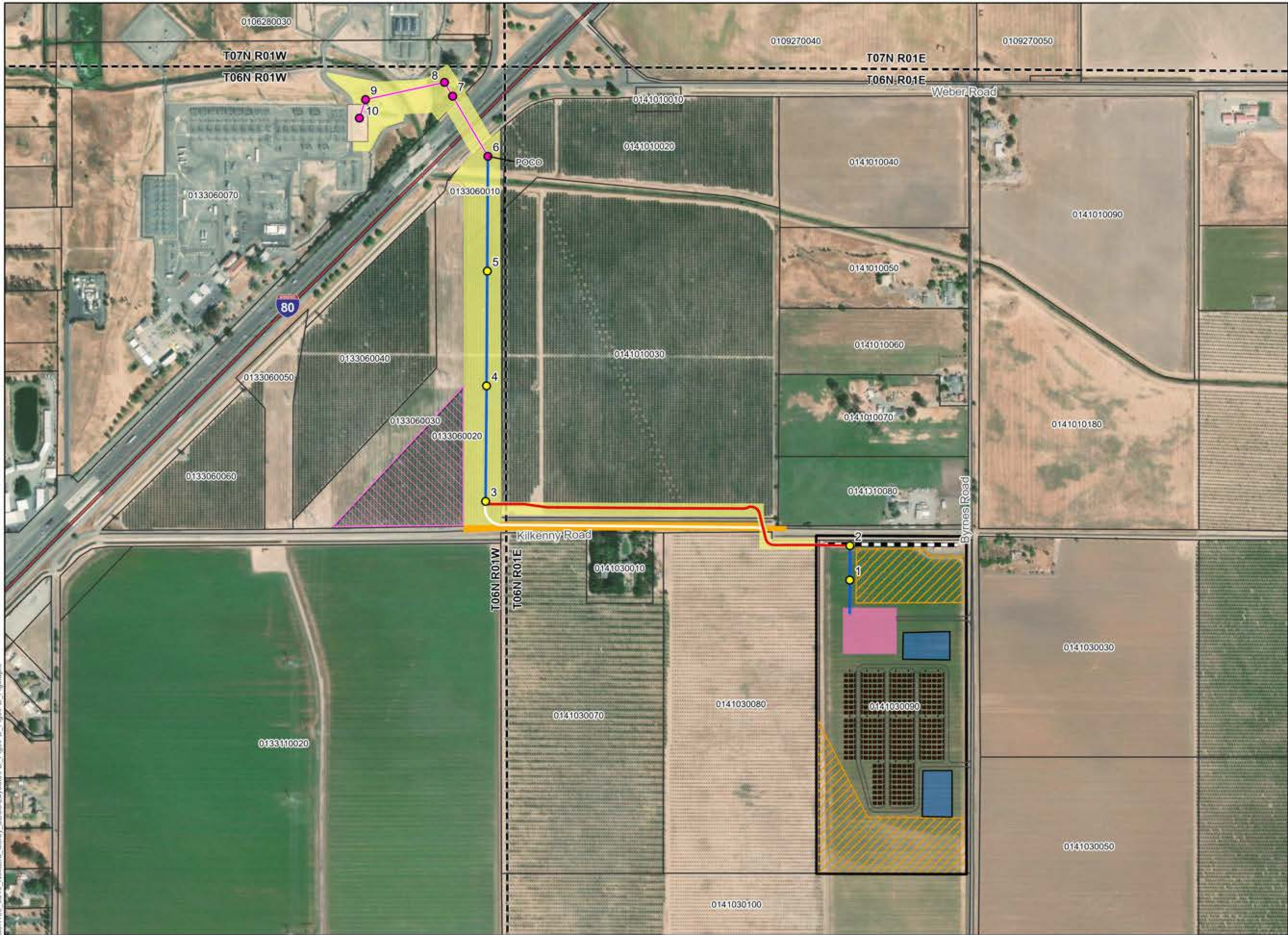


Z:\Projects\1109_0319_NextEra_Corby_BE\SS\Layouts\PD_Figs\PD_Figs.aprx

**NextEra Energy
Corby Battery Energy
Storage System Project**

**Figure 1-3
Project Layout**

Solano County, CA



- ▭ Parcels
- ▭ Township Range
- Proposed Features**
- Proposed Pole
- Gen-tie (Overhead)
- Gen-tie (Underground; Option 1)
- Gen-tie (Underground; Option 2)
- ▬ Sound Barrier
- Access Road
- ▨ Construction Laydown Area
- ▨ Gen-tie Corridor (Option 1)
- ▨ Gen-tie Corridor (Option 2)
- ▨ Gen-tie Laydown Area
- BESS Array
- ▭ Project Site
- Stormwater Pond
- Project Substation
- New Corby Bay
- PG&E Features**
- Pole Locations (PG&E)
- Gen-tie (Overhead; PG&E)



NOT FOR CONSTRUCTION
Reference Map



Z:\Projects\1109_0319_NextEra_Corby_BEES\Layouts\PD_Figs\PD_Figs\PD_Figs.aprx

Distribution List

California Air Resources Board
California Department of Conservation
California Independent System Operator
Caltrans - District 4
Cal Fire
U.S. Army Corps of Engineers
United States Fish and Wildlife Service, Sacramento Field Office
United States EPA Region 9
Office of Environmental Health Hazard Assessment, Reproductive and Cancer Hazard
Assessment Branch
California Highway Patrol, Headquarters
Cal/OSHA, American Canyon Office
Department of Pesticide Regulation, Human Health Assessment Branch
Yolo-Solano Air Quality Management District (AQMD)
California Office of Historic Preservation
California Geological Survey
Dixon Fire Protection District
Solano Irrigation District
Solano County Water Agency
California Geological Survey Mineral Resources Program
Dixon Unified School District
Solano County Sheriff's Office
California Natural Resources Agency
Natural Resources Conservation Services
Native American Heritage Commission
Office of Environmental Health Hazard Assessment, Reproductive and Cancer Hazard
Assessment Branch
California Environmental Protection Agency (CalEPA)
U.S. EPA, Region IX, Environmental Review Branch
Department of Water Resources
Travis Air Force Base