

DOCKETED	
Docket Number:	24-OPT-05
Project Title:	Corby Battery Energy Storage System Project
TN #:	260606
Document Title:	Courtesy Tribal Notice of Receipt of Opt-In Application (24-OPT-05) and Distribution List
Description:	Courtesy Tribal Notice of Receipt of Opt-In Application for the Corby Battery Energy Storage System Project (24-OPT-05) and Distribution List
Filer:	Renee Longman
Organization:	California Energy Commission
Submitter Role:	Commission Staff
Submission Date:	12/12/2024 10:16:46 AM
Docketed Date:	12/12/2024



November 15, 2024

Subject: Opt-In Certification for Corby Battery Energy Storage System Project (24-OPT-05)

On November 7, 2024, California Energy Commission (CEC) staff confirmed receipt of an application from Corby Energy Storage, LLC ("Applicant"), for certification from the CEC through the Opt-In process for the Corby Battery Energy Storage System Project (24-OPT-05, project or Corby BESS). The project is proposed on an approximately 40.3-acre privately owned parcel (Assessor's Parcel Number 0141-030-090) southwest of the intersection of Kilkenny Road and Byrnes Road in Solano County, California.

Project Description

The project would include a 300-megawatt (MW) battery energy storage system (BESS), associated project substation, inverters, and other ancillary facilities, such as fencing, sound barrier, roads, retention basins, storage containers, and a supervisory control and data acquisition (SCADA) system. The project site is currently used as agricultural land for row crops. The surrounding land is also in agricultural use, including orchards to the south, irrigated pastures to the east and west, and rural residential use to the north.

The project would connect to the Pacific Gas and Electric (PG&E) Vaca-Dixon Substation across Interstate 80 (I-80) and northwest of the project site, using an approximately 1.1-mile long 230-kilovolt (kV) generation tie (gen-tie) line, portions of which would be installed overhead and underground. The underground portion of the gen-tie line would run east-west parallel to and crossing Kilkenny Road, either within acquired easements on adjacent parcels (Underground Route Option #1) or within the Kilkenny Road right-of-way (Underground Route Option #2).

The overhead portions would include two structures on the project site, four structures between Kilkenny Road and I-80 on private land owned by the applicant, and up to four structures north of I-80 on PG&E-owned property adjacent to the Vaca-Dixon Substation, for a total of up to ten overhead gen-tie structures.

To accommodate the interconnection of the project, PG&E would install a new 230-kV Double Bus Bay structure with associated foundations and supports on approximately 0.6 acre of the existing substation. This new bay would house four switch support structures and associated equipment for the new 230-kV connection. In addition, PG&E would also construct, own, and operate the portion of the gen-tie between the point of change of ownership pole

immediately south of I-80 and the first point of interconnection at the Vaca-Dixon Substation, including five of the ten structures.

The project would be unstaffed after construction, with operational control from an offsite control room through the SCADA system. Operational staff would perform periodic inspections and maintenance as necessary. The Project Description (TN 259872) section of the application can be accessed directly at the following link:

<https://efiling.energy.ca.gov/GetDocument.aspx?tn=259872&DocumentContentId=96060>.

CEC Jurisdiction and Opt-In Certification Program

The CEC was authorized to establish a certification program for eligible clean and renewable energy facilities to optionally seek certification from the CEC. (Pub. Resources Code, §§ 25545–25545.13.) Under this new Opt-In Certification Program, among the types of facilities that CEC can certify are energy storage facilities of 200 megawatt-hours (MWh) or more and the electric transmission lines from these facilities to the first point of interconnection with the existing transmission grid.

The CEC is the lead agency under the California Environmental Quality Act (CEQA) and is required to prepare an environmental impact report (EIR) for any facility that elects to opt-in to the CEC's jurisdiction. With exceptions, the issuance of a certificate by the CEC for an eligible facility is in lieu of any permit, certificate, or similar document required by any state, local, or regional agency. The CEC is required to make its decision on whether to certify the project within 270 days of receiving a *complete* application. The CEC is required to consult with all responsible and trustee agencies on the scope and content of the EIR. The CEC staff has begun its review of the application—which has not been deemed complete at this time—and transmitted the application to responsible and trustee agencies. Once the application is deemed complete, the CEC staff will evaluate the proposed project, consult with California Native American tribes, and host public meetings in the project area. No later than five days of deeming the application complete, the CEC staff will send formal letters to California Native American tribes inviting tribes to consult with the CEC about the project. Consultation between California Native American tribes and the CEC will proceed according to the requirements of Public Resources Code, sections 21080.3.1, 21080.3.2, 21082.3, and 25545.7.4 (CEQA and the Warren-Alquist Act).

The CEC will also host an informational and public scoping meeting during the development of the EIR, and a public meeting during the 60-day comment period on the Draft EIR, which will be included as part of the CEC's Staff

Assessment of the application. After the conclusion of the public comment period, the CEC staff will publish an updated Staff Assessment (which will include a Final EIR), and the CEC's Executive Director's recommendation on whether the CEC should certify the EIR and issue a certificate for construction and operation of the proposed project. The updated Staff Assessment and Executive Director's recommendation will be published at least 30 days before the CEC's consideration at a public meeting.

At the final public meeting the CEC will formally decide whether to certify the EIR and grant a certification for construction and operation of the proposed project. Should the certification be granted, other agencies that retain their permitting authorities must take final action on any additional permits within 90 days of the CEC issuing a certificate.

Participation

The CEC welcomes public participation in the Opt-In review process. A copy of the Opt-In application as well as other project information, can be found on the CEC website at: <https://www.energy.ca.gov/powerplant/battery-storage-system/corby-battery-energy-storage-system-project>. To stay informed about this project and receive notice of upcoming meetings and workshops, sign up to the project's email subscription, which can be accessed on the same project webpage. Once enrolled, automatic email notifications are sent when documents and notices are posted to the project webpage. Information about the Opt-In Certification Program can be found on the CEC website at: <https://www.energy.ca.gov/programs-and-topics/topics/power-plants/opt-certification-program>.

The CEC staff welcomes your comments and questions. Please do not hesitate to contact Assistant Tribal Liaison, Gabriel Roark, at (916) 237-2544 or by email at gabriel.roark@energy.ca.gov.

Enclosures:

Figure 1-1 Project Vicinity (from Application TN 259872)

Figure 1-2 Site Location (from Application TN 259872)

Figure 1-3 Project Layout (from Application TN 259872)

**NextEra Energy
Corby Battery Energy
Storage System Project**

**Figure 1-1
Project Vicinity**

Solano County, CA

Proposed Features

- Gen-tie (Overhead)
- Gen-tie (Underground; 2 Options)
- Gen-tie (Overhead; PG&E)
- Project Site

Public Land Ownership

- Local Government
- Federal
- Non Profit
- Special District
- State

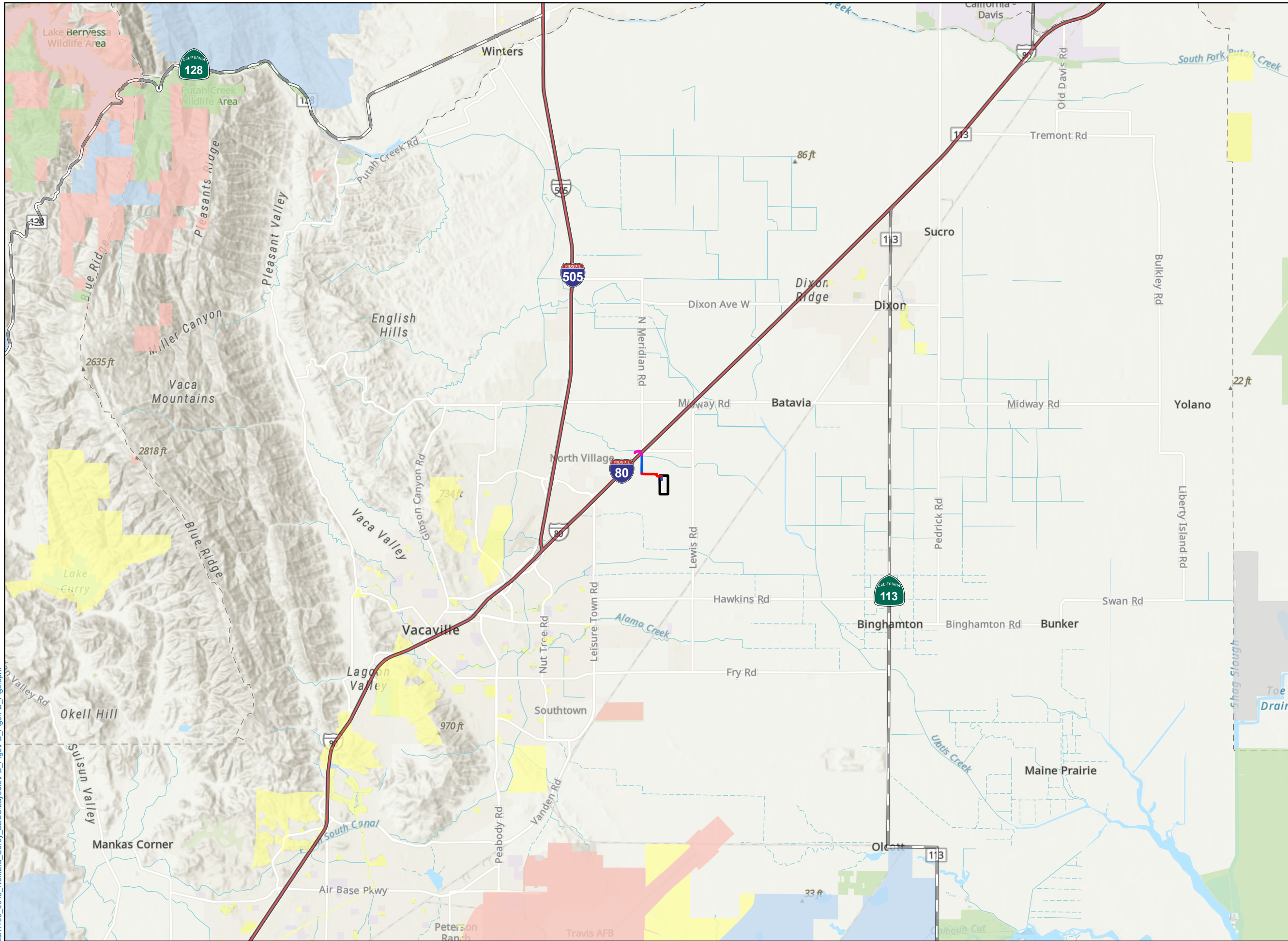
Transportation

- Interstate Highway
- State Highway



NOT FOR CONSTRUCTION

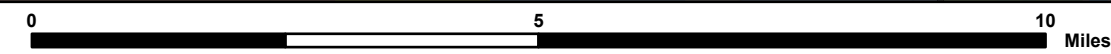
Reference Map



Z:\Projects\1109_0319_NextEra_Corby_BESS\Layouts\PD_Figs\PD_Figs.aprx



1:120,000 NAD 1983 StatePlane California II FIPS 0402 Feet



Source: ESRI, USDA NAIP, US CENSUS, BTS

**NextEra Energy
Corby Battery Energy
Storage System Project**

**Figure 1-2
Site Location**

Solano County, CA

- Applicant-Owned Parcels
- Township Range
- Section
- Proposed Features**
- Gen-tie (Overhead)
- Gen-tie (Underground; Option 1)
- Gen-tie (Underground; Option 2)
- Gen-tie (Overhead; PG&E)
- Project Site
- Transportation**
- Interstate Highway
- Road



NOT FOR CONSTRUCTION

Reference Map

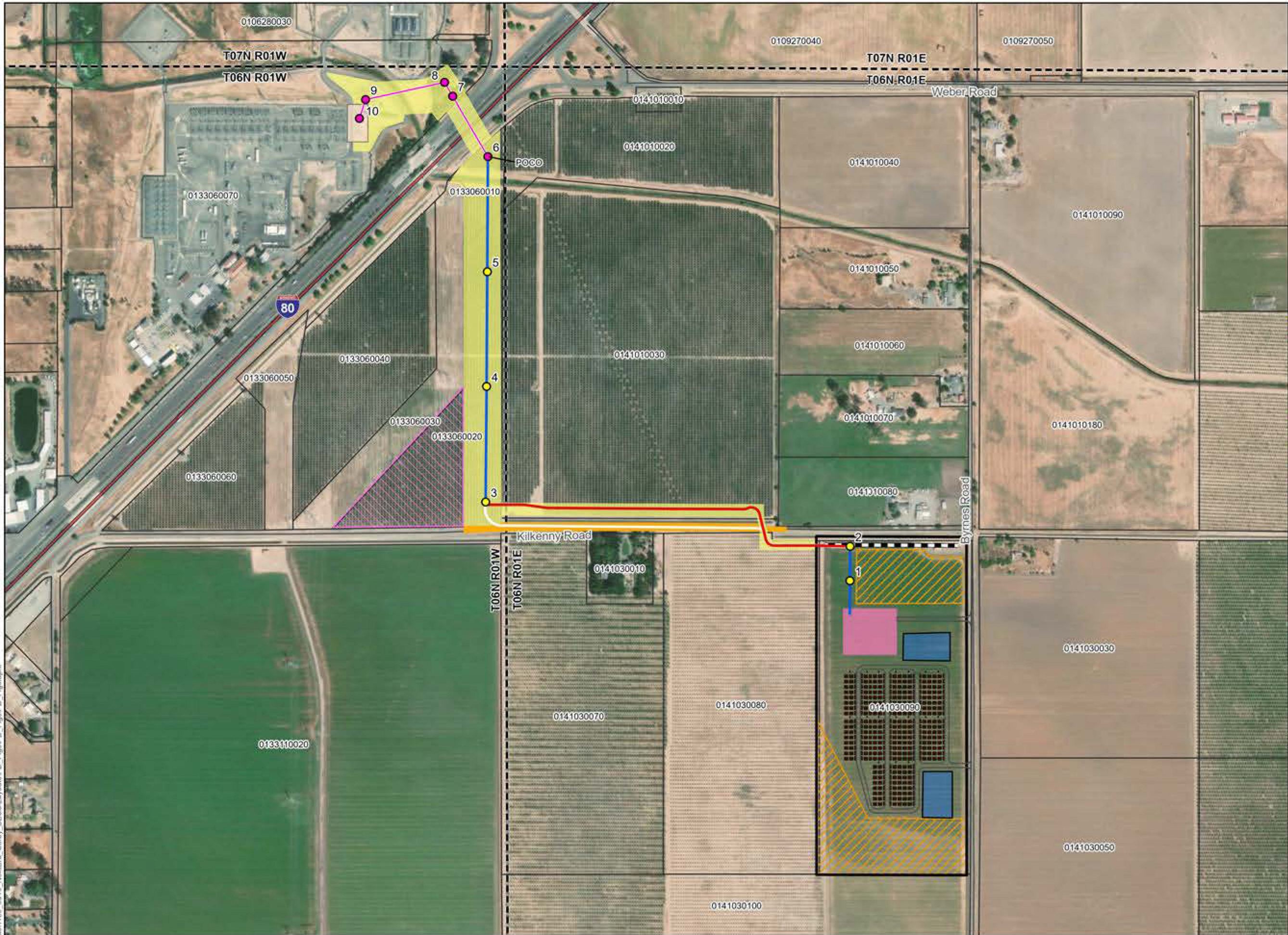


Z:\Projects\1109_0319_NextEra_Corby_BESS\Layouts\PD_Figs\PD_Figs\PD_Figs.aprx

**NextEra Energy
Corby Battery Energy
Storage System Project**

**Figure 1-3
Project Layout**

Solano County, CA



- Parcels
- Township Range
- Proposed Features**
- Proposed Pole
- Gen-tie (Overhead)
- Gen-tie (Underground; Option 1)
- Gen-tie (Underground; Option 2)
- Sound Barrier
- Access Road
- Construction Laydown Area
- Gen-tie Corridor (Option 1)
- Gen-tie Corridor (Option 2)
- Gen-tie Laydown Area
- BESS Array
- Project Site
- Stormwater Pond
- Project Substation
- New Corby Bay
- PG&E Features**
- Pole Locations (PG&E)
- Gen-tie (Overhead; PG&E)



NOT FOR CONSTRUCTION
Reference Map



Z:\Projects\1109_0319_NextEra_Corby_BESS\Layouts\PD_Figs\PD_Figs\PD_Figs.aprx

Distribution List

Cachil Dehe Band of Wintun Indians of the Colusa Indian Community	Wayne Mitchum Jr., Chairman
Cachil Dehe Band of Wintun Indians of the Colusa Indian Community	Jennie Mitchum, Cultural Preservation Director
Cortina Rancheria - Kletsel Dehe Band of Wintun Indians	Charlie Wright, Chairperson
Grindstone Rancheria of Wintun-Wailaki	Ronald Kirk, Chairperson
Yocha Dehe Wintun Nation	Anthony Roberts, Chairperson
Yocha Dehe Wintun Nation	Yvonne Perkins, THPO, Cultural Resources Chairman
Yocha Dehe Wintun Nation	Leland Kinter, Tribal Treasurer
Yocha Dehe Wintun Nation	James Kinter, Tribal Secretary