

**DOCKETED**

<b>Docket Number:</b>	24-OPT-04
<b>Project Title:</b>	Potentia-Viridi Battery Energy Storage System
<b>TN #:</b>	258532
<b>Document Title:</b>	Federal, State, Other Agency Notification of Application Receipt for Potentia-Viridi BESS (24-OPT-04) & distribution list
<b>Description:</b>	Emailed on August 15, 2024
<b>Filer:</b>	Ann Crisp
<b>Organization:</b>	California Energy Commission
<b>Submitter Role:</b>	Commission Staff
<b>Submission Date:</b>	8/15/2024 4:39:11 PM
<b>Docketed Date:</b>	8/15/2024



August 15, 2024

Notice of Receipt of Opt-In Application for Potentia-Viridi Battery Energy Storage System project (24-OPT-04) / request for comments and information

This letter serves as notification that the California Energy Commission (CEC) has received an opt-in application for the Potentia-Viridi Battery Energy Storage System project (project). Levy Alameda, LLC ("Applicant") proposes to construct, operate, and decommission a 400-megawatt (MW) battery energy storage system (BESS) in an unincorporated area in eastern Alameda County. The approximately 85-acre project site is located within a portion of Assessor Parcel Number (APN) 99B-7890-002-04 located at 17257 Patterson Pass Road, southwest of Interstate 580 and Interstate 205. The primary components of the proposed project include an up to 3,200-megawatt-hour BESS facility, an operations and maintenance (O&M) building, a project substation, a 500-kilovolt (kV) overhead intertie transmission (gen-tie) line, and interconnection facilities within the Pacific Gas and Electric Company (PG&E) owned and operated Tesla Substation. The project would be composed of lithium-iron phosphate batteries, or similar technology batteries, with proven safety and performance records, available at the time of procurement. Electric energy would be transferred from the existing power grid to charge project batteries and store electrical energy and discharge back to the power grid when the stored energy is needed. The project would be interconnected to the regional electrical transmission grid via an approximately 2,884-foot-long new single-circuit 500kV gen-tie line within a 200-foot-wide corridor between the project substation and the existing PG&E Tesla Substation. The gen-tie line would extend southeast from the project substation, crossing Patterson Pass Rd, and then proceed east to the Point of Interconnection (POI) at the Tesla Substation. The Applicant entered into a Large Generator Interconnection Agreement with the California Independent System Operator and PG&E on October 31, 2022. The Project Description (TN 258016) section of the application can be accessed directly at the following link: <https://efiling.energy.ca.gov/GetDocument.aspx?tn=258016&DocumentContentId=93945>

In 2022, Assembly Bill 205 established a new Opt-In Certification Program for eligible non-fossil-fueled power plants, energy storage, and manufacturing and assembly facilities to optionally seek certification through the CEC. Upon receipt of an application, the CEC has the exclusive authority to certify the site and related facility. With certain exceptions, the issuance of a certificate by the CEC is in lieu of any permit, certificate, or similar document required by any state, local, or regional agency, or federal agency to the extent permitted by federal law, and supersedes any applicable statute, ordinance, or regulation of any state, local, or regional agency, or federal agency to the extent permitted by federal law. The CEC is the lead agency under the California Environmental Quality Act and is required to prepare an environmental impact report for any facility that elects to opt into the CEC's jurisdiction.

The CEC provides the following notice pursuant to Public Resources Code section 25545.8, which states that subsections (g) and (k) of Public Resources Code section 25519 apply to an opt-in application. The relevant language from Public Resources Code section 25519 is as follows:

(g) The commission shall transmit a copy of the application to each federal and state agency having jurisdiction or special interest in matters pertinent to the proposed site and related facilities and to the Attorney General.

(k) The commission shall transmit a copy of the application to any governmental agency not specifically mentioned in this act, but which it finds has any information or interest in the proposed site and related facilities, and shall invite the comments and recommendations of each agency. The commission shall request any relevant laws, ordinances, or regulations that an agency has promulgated or administered.

The CEC has set up a webpage for the project at the following link:

<https://www.energy.ca.gov/powerplant/battery-storage-system/potentia-viridi-battery-energy-storage-system>

The documents which comprise the opt-in application can be found in the project docket, which is accessible via the project webpage or directly at the following link:

<https://efiling.energy.ca.gov/Lists/DocketLog.aspx?docketnumber=24-OPT-04>

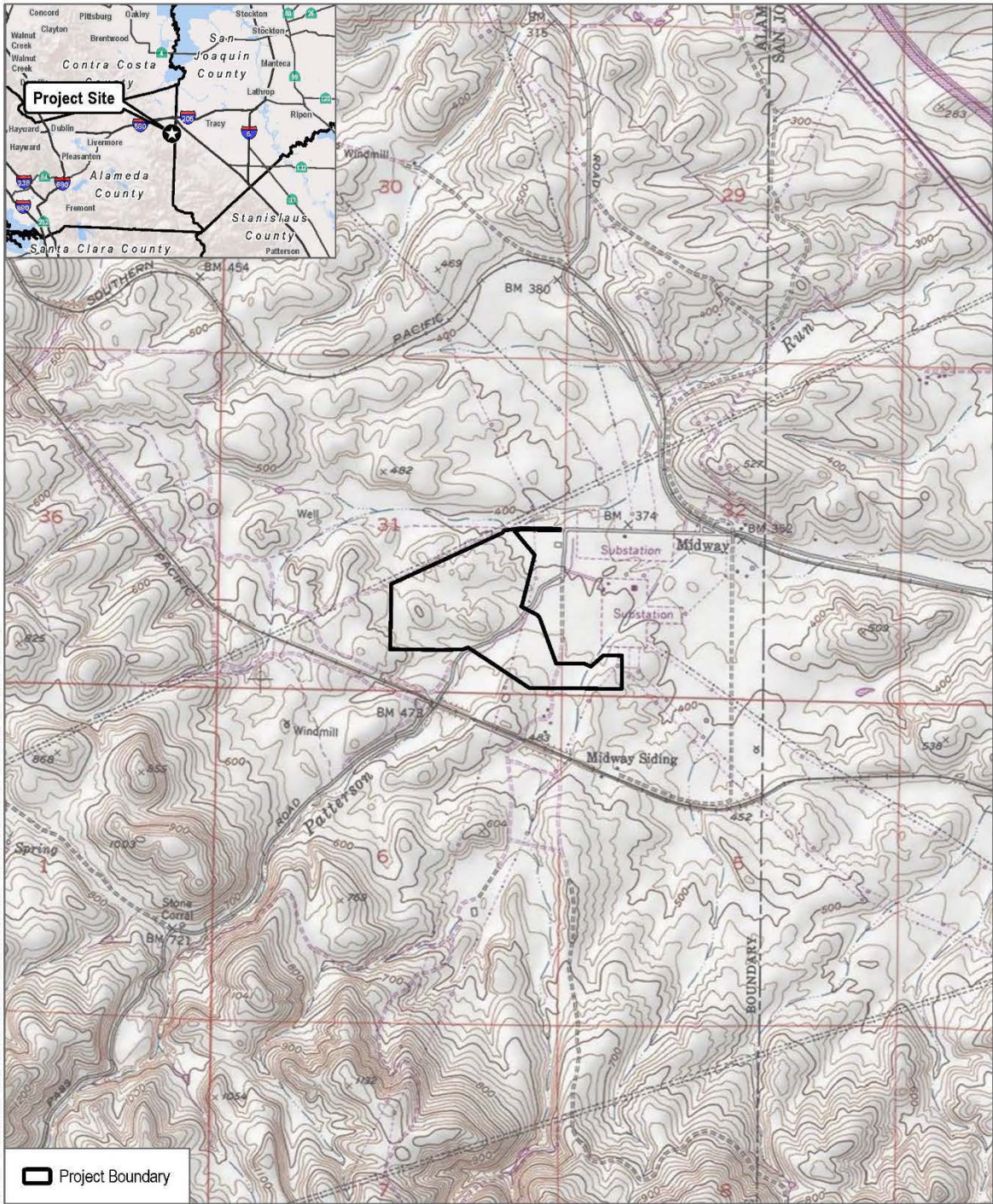
Pursuant to Public Resources Code section 25519(k), the CEC invites the comments and recommendations of your agency, and requests that you send us any relevant laws, ordinances, or regulations that your agency has promulgated or administered that are applicable to the proposed project.

To stay informed about this project and receive notice of upcoming public meetings, sign up to the project subscription, which can be accessed on the project webpage. Once enrolled, automatic email notifications are sent via govDelivery when documents and notices are posted to the project docket.

Feel free to reach out to me directly via email if you have any questions about this notice. Thank you.

Ann Crisp  
Project Manager  
California Energy Commission  
[ann.crisp@energy.ca.gov](mailto:ann.crisp@energy.ca.gov)

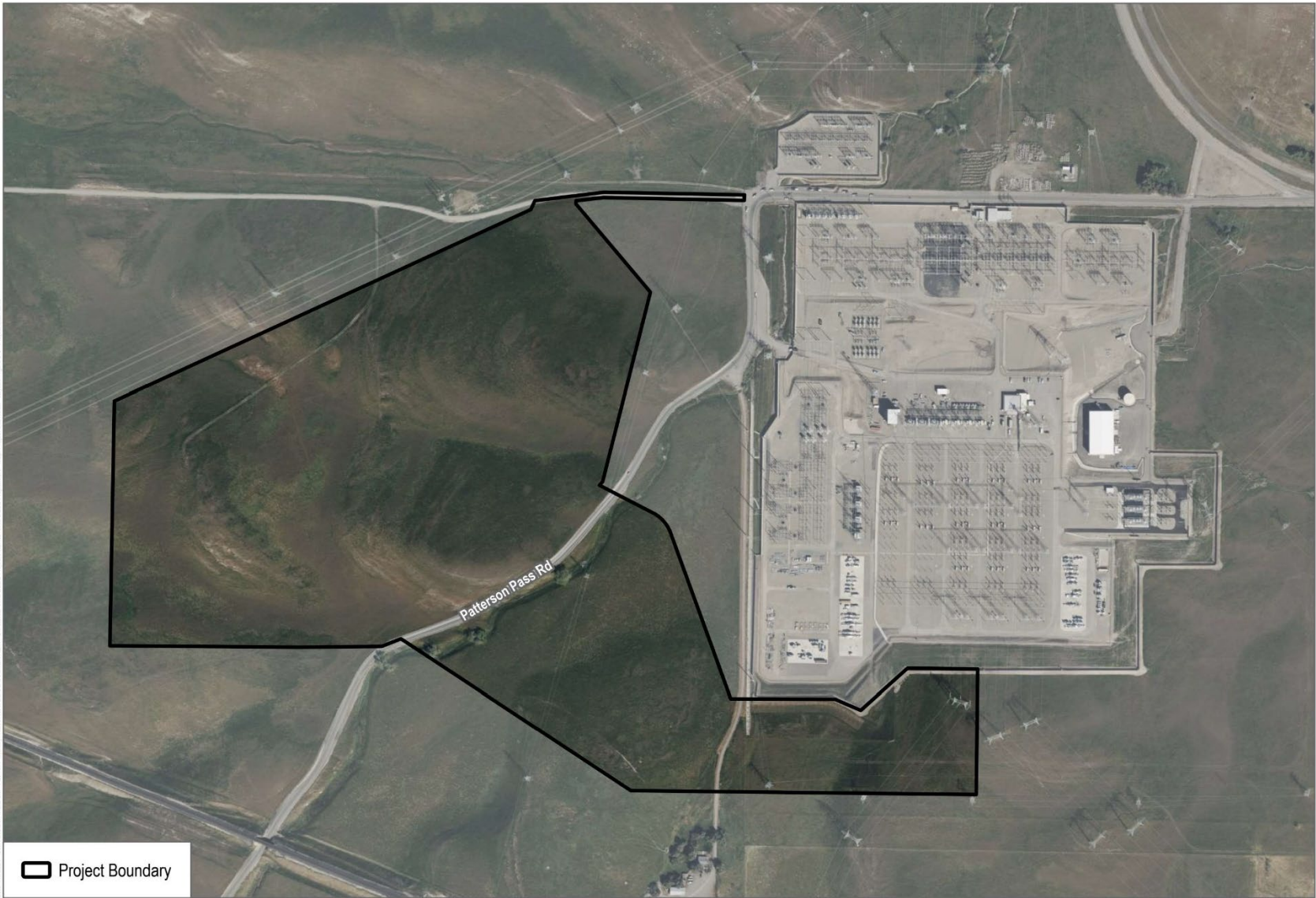
Enclosures: Figure 2-1 Regional Map (from application, TN 258016)  
Figure 2-3 Project Site Aerial (from application, TN 258016)



SOURCE: USGS 7.5 Minute Quadrangle Series  
 Midway Quadrangle - Township 2S Range 4E Section 31, 32



**FIGURE 2-1**  
**Regional Map**  
 Potentia-Viridi BESS Project



SOURCE: Bing Maps 2023



**FIGURE 2-3**  
Project Site Aerial  
Potentia-Viridi BESS Project

Distributed via email to the following contacts:

<b>First</b>	<b>Last</b>	<b>Title</b>	<b>Agency</b>
Xuna	Cai	Supervising Air Quality Engineer	BAAQMD, Engineering Division
Pamela	Leong	Director, Officer	BAAQMD, Engineering Division
Wendy	Goodfriend	Director, Planning and Climate Protection Division	BAAQMD, Planning and Climate Protection
Rebecca	Fancher	Staff Air Pollution Specialist	California Air Resources Board
Courtney	Graham	Manager	California Air Resources Board, Enforcement Division
LinYing	Li	Air Pollution Specialist	California Air Resources Board
Kerri	Kisko	Environmental Scientist	California Department of Conservation
			California Independent System Operator
Steve	Stewart	EACCS Steering Committee	East Alameda County Conservation Strategy
			California Department of Conservation
Erik	Alm	Office Chief - Office of Regional and Community Planning	Caltrans - District 4 Office of Regional and Community Planning; Local Development – Intergovernmental Review (LD-IGR)
Regina	Hunter	Branch Chief, Office of Public Affairs   Customer Engagement	Caltrans - District 4 - Bay Area
		Encroachment Department	District 4-Encroachment Permits
Junming	Li	Water Supply Engineering	Zone 7 Water Agency
Elke	Rank	Senior Water Resources Planner	Zone 7 Water Agency
Steven	Blythe	Assistant Chief - Santa Clara Unit	Cal Fire
Baraka	Carter	Unit Chief	Cal Fire
Mary	Pakenham-Walsh	Chief, CA Delta Section	U.S. Army Corps of Engineers
Matthew	DiLoreto	Regulatory Project Manager, CA Delta Section	U.S. Army Corps of Engineers
Michael	Fris	Field Supervisor	United States Fish and Wildlife Service, Sacramento Field Office
Ryan	Olah	Coast Bay Division, Division Supervisor	United States Fish and Wildlife Service, Sacramento Field Office
Matt	Lakin	Acting Director	United States EPA Region 9
Martha	Sandy, Ph.D	Branch Chief	Office of Environmental Health Hazard Assessment, Reproductive and Cancer Hazard Assessment Branch
		CHP Special Projects Section	California Highway Patrol, Headquarters
Eddie	Miranda	District Manager	Cal/OSHA, Region 2, Modesto District Office

<b>First</b>	<b>Last</b>	<b>Title</b>	<b>Agency</b>
Nan	Singhasemanon	Assistant Director	Department of Pesticide Regulation, Human Health Assessment Branch
Wade	Crowfoot	Secretary	California Natural Resources Agency
James	Booth	District Conservationist	Natural Resources Conservation Services
Reginald	Pagaling	Chairperson	Native American Heritage Commission
Martha	Sandy, Ph.D	Branch Chief	Office of Environmental Health Hazard Assessment, Reproductive and Cancer Hazard Assessment Branch
Elizabeth	Brega	Senior Environmental Scientist	California Department of Environmental Protection
Thomas	Plenys	NEPA Reviewer – Energy (Team Lead)	U.S. EPA, Region IX, Environmental Review Branch
Karla	Nemeth	Director	Department of Water Resources