

DOCKETED

Docket Number:	24-OPT-04
Project Title:	Potentia-Viridi Battery Energy Storage System
TN #:	258529
Document Title:	Notice of Receipt of an Opt-In Application for Attorney General
Description:	emailed on August 14, 2024
Filer:	Ann Crisp
Organization:	California Energy Commission
Submitter Role:	Commission Staff
Submission Date:	8/15/2024 4:12:58 PM
Docketed Date:	8/15/2024



August 14, 2024

Notice of Receipt of Opt-In Application for Potentia-Viridi Battery Energy Storage System project (24-OPT-04)

This letter serves as notification that the California Energy Commission (CEC) has received an opt-in application for the Potentia-Viridi Battery Energy Storage System project (project). Levy Alameda, LLC ("Applicant") proposes to construct, operate, and decommission a 400-megawatt (MW) battery energy storage system (BESS) in an unincorporated area in eastern Alameda County. The approximately 85-acre project site is located within a portion of Assessor Parcel Number (APN) 99B-7890-002-04 located at 17257 Patterson Pass Road, southwest of Interstate 580 and Interstate 205. The primary components of the proposed project include an up to 3,200-megawatt-hour BESS facility, an operations and maintenance (O&M) building, a project substation, a 500-kilovolt (kV) overhead intertie transmission (gen-tie) line, and interconnection facilities within the Pacific Gas and Electric (PG&E) owned and operated Tesla Substation. The project would be composed of lithium-iron phosphate batteries, or similar technology batteries, with proven safety and performance records, available at the time of procurement. Electric energy would be transferred from the existing power grid to charge project batteries and store electrical energy and discharge back to the power grid when the stored energy is needed. The project would be interconnected to the regional electrical transmission grid via an approximately 2,884-foot-long new single-circuit 500 kV gen-tie line within a 200-foot-wide corridor between the project substation and the existing PG&E Tesla Substation. The gen-tie line would extend southeast from the project substation, crossing Patterson Pass Rd, and then proceed east to the Point of Interconnection (POI) at the Tesla Substation. The Applicant entered into a Large Generator Interconnection Agreement with California Independent System Operator and PG&E on October 31, 2022. The Project Description (TN 258016) section of the application can be accessed directly at the following link:

<https://efiling.energy.ca.gov/GetDocument.aspx?tn=258016&DocumentContentId=93945>

In 2022, Assembly Bill 205 established a new Opt-In Certification Program for eligible non-fossil-fueled power plants, energy storage, and manufacturing and assembly facilities to optionally seek certification through the CEC. Upon receipt of an application, the CEC has the exclusive authority to certify the site and related facility. With certain exceptions, the issuance of a certificate by the CEC is in lieu of any permit, certificate, or similar document required by any state, local, or regional agency, or federal agency

to the extent permitted by federal law, and supersedes any applicable statute, ordinance, or regulation of any state, local, or regional agency, or federal agency to the extent permitted by federal law. The CEC is the lead agency under the California Environmental Quality Act and is required to prepare an environmental impact report for any facility that elects to opt into the CEC's jurisdiction.

The CEC provides the following notice pursuant to Public Resources Code, section 25545.8, which states that certain subsections of Public Resources Code, section 25519 are applicable. Section 25519(g) of the Public Resources Code states, in part: "The commission shall transmit a copy of the application to each federal and state agency having jurisdiction or special interest in matters pertinent to the proposed site and related facilities *and to the Attorney General.*" (emphasis added)

The CEC has set up a web page for the project at the following link:

<https://www.energy.ca.gov/powerplant/battery-storage-system/potentia-iridi-battery-energy-storage-system>

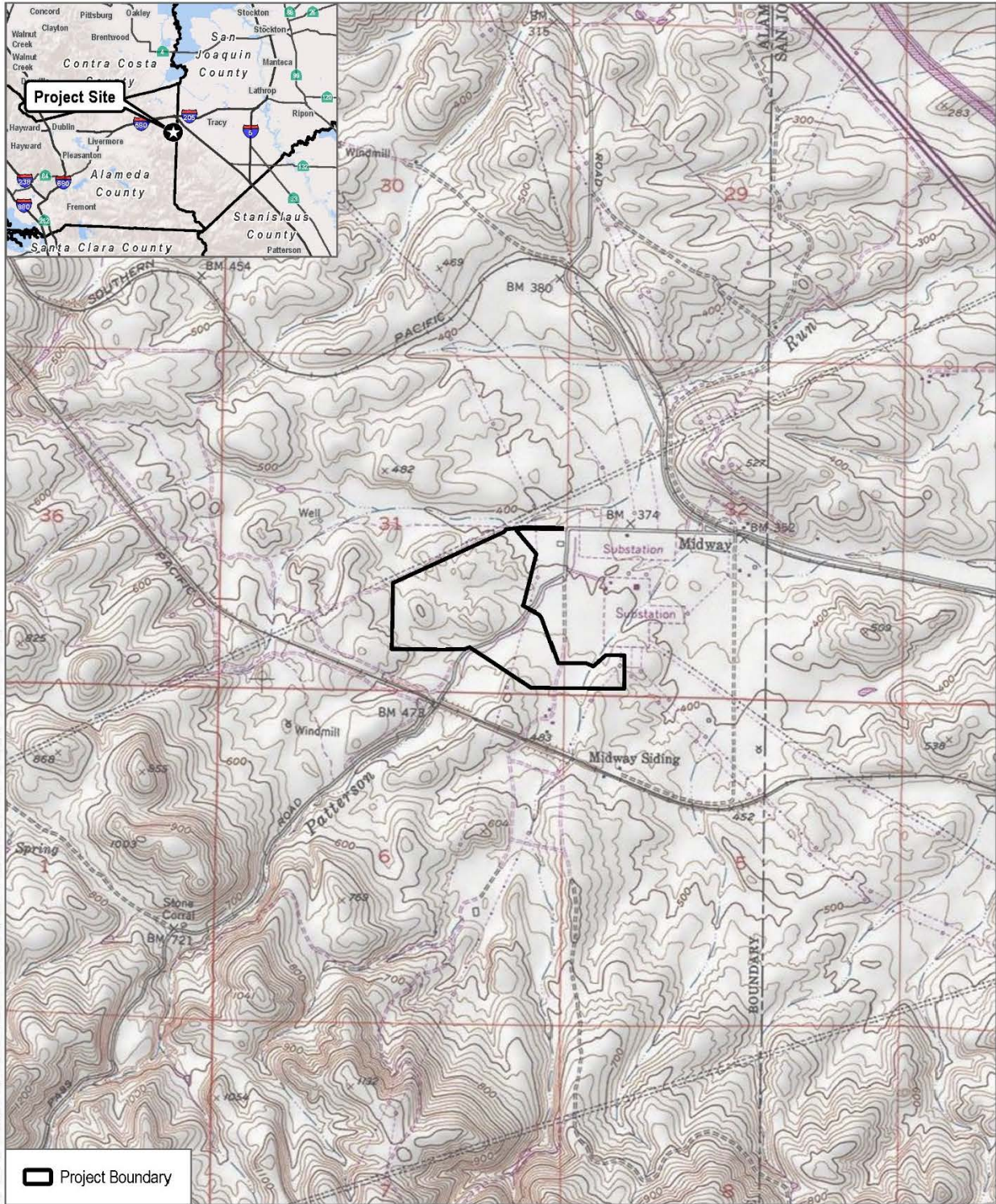
The documents which comprise the opt-in application can be found in the project docket, which is accessible via the project webpage or directly at the following link: <https://efiling.energy.ca.gov/Lists/DocketLog.aspx?docketnumber=24-OPT-04>

Feel free to reach out to us directly via email if you have any questions about this notice. Thank you.

Ann Crisp
Project Manager
California Energy Commission

ann.crisp@energy.ca.gov

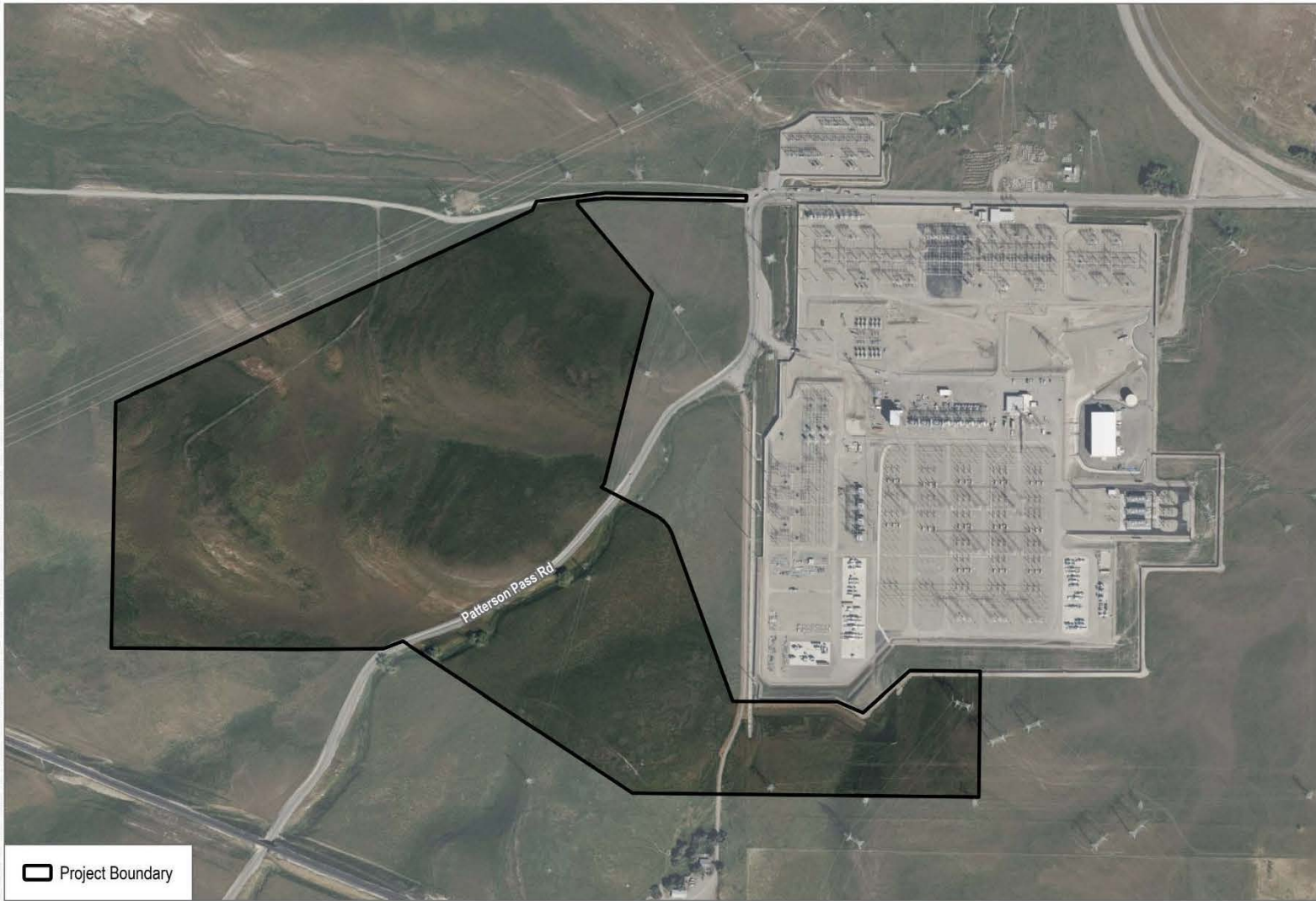
Enclosures: Figure 2-1 Regional Map (from application, TN 258016)
Figure 2-3 Project Site Aerial (from application, TN 258016)



SOURCE: USGS 7.5 Minute Quadrangle Series
 Midway Quadrangle - Township 2S Range 4E Section 31, 32



FIGURE 2-1
Regional Map
 Potentia-Viridi BESS Project



SOURCE: Bing Maps 2023

DUDEK



0 270 540
Feet

FIGURE 2-3
Project Site Aerial
Potentia-Viridi BESS Project