

DOCKETED

Docket Number:	24-OPT-04
Project Title:	Potentia-Viridi Battery Energy Storage System
TN #:	258042
Document Title:	Worker Environmental Awareness Plan
Description:	This document is a handout and presentation for the worker environmental awareness program developed for the project.
Filer:	Jennifer Dorgan
Organization:	Allen Matkins Leck Gamble Mallory & Nats
Submitter Role:	Applicant Representative
Submission Date:	7/26/2024 11:06:27 AM
Docketed Date:	7/26/2024

Appendix 1G

Worker Environmental Awareness Plan

Appendix 1G
Workers Environmental Awareness Plan
**Potentia-Viridi Battery
Energy Storage Project
Alameda County, California**

JULY 2024

Prepared for:

LEVY ALAMEDA, LLC

Project Applicant

155 Wellington St W., Suite 2930
Toronto, Ontario M5V 3H1, Canada

CALIFORNIA ENERGY COMMISSION

Lead Agency

715 P Street,
Sacramento, California 95814

Prepared by:

DUDEK

4900 California Avenue
Tower B, Second Floor
Bakersfield, California 93309

INTENTIONALLY LEFT BLANK

Cultural Resources

- May include prehistoric and historic period archaeological sites, Native American cultural resources, and historic buildings or structures.
- All cultural resource discoveries are strictly confidential.
- Inform the lead archaeologist or your supervisor in the event of an inadvertent cultural resource discovery.



Paleontological Resources

- May include fossilized remains, traces, or imprints of once-living organisms preserved in rocks or sediments.
- Unauthorized collecting or disturbing of fossils is illegal and can result in fines and/or imprisonment.



Dudek will support this project by ensuring careful adherence to all regulations pertaining to environmental resources. It is important that all project staff understand that we are on-site to ensure that the project remains compliant. Please contact us with any questions or concerns that you might have. It is much more efficient and beneficial to the project when we are able to respond to a potential issue on the front end, allowing for a more flexible decision with regard to compliance.

IF IN DOUBT, ASK!

??

If a biological, cultural, or paleontological resource is encountered:

- Do not touch or approach the potential resource.
- Halt work in the immediate vicinity of potential resources.
- Notify your supervisor and biological, cultural, or paleontological monitor immediately.
- Do not resume work until you receive authorization from the environmental compliance monitoring team or your supervisor.

Dudek Contacts

Dudek Project Manager:

Ronelle Candia

Email: rcandia@dudek.com

Phone: (661) 509-2787

Biological Lead:

Laura Burris

Email: lburris@dudek.com

Phone: (916) 835-9671

Cultural Lead:

Adam Giacinto

Email: agiacinto@dudek.com

Phone: (707) 217-7093

Workers Environmental Awareness Program

DUDEK

800.450.1818 | HELLO@DUDEK.COM

DUDEK.COM



Potentia-Viridi BESS Project

JULY 2024

Construction Best Management Practices

Please remember to abide by the following guidelines:

- ✔ All vehicle travel must remain within the established transportation route limits.
- ✔ Limit vehicle speed to reduce risk of collision with sensitive resources.
- ✔ Any holes or trenches left open overnight must be covered or ramped; open pipes must be capped or screened.
- ✔ Limit the size of any vegetation and/or ground disturbance to the absolute minimum necessary to perform the activity safely and as designed.
- ✔ Do not litter (including food waste)
- ✔ Smoking should be confined to pre-defined locations that is not near dry vegetation and cigarette butts will be properly disposed.
- ✔ At no time should any wildlife be harmed or harassed.

Fire Prevention

- ✔ Possession of shovel, fire extinguisher and/or at least 5 gallons of water should be on hand in the event of an unintentional fire start.
- ✔ Catalytic converters should be inspected often and cleaned of all vegetation debris.
- ✔ Welding operations should be conducted in areas free or mostly free from vegetation.
- ✔ Report wildland fires immediately to the **Alameda County Regional Emergency Communications Center (Dispatch Center) at (925) 447-6880 or (510) 881-8181.**
- ✔ Helpful information to be reported is lat/long location (**37.710350, -121.571450**), what's burning, time started, who/what is near the fire and direction of fire spread.

Biological Resources

There are several sensitive wildlife species in the vicinity of the Project area that are protected under local, state, and federal measures.

California Tiger Salamander



- ✔ Large, stocky salamander that measures up to 8 inches in length.
- ✔ Spends most of its life underground in vacant burrows in grasslands near breeding ponds.
- ✔ Breeding season emergence is primarily between November to February.

California Red-Legged Frog

- ✔ Measures approximately 4-5 inches in length. Adults are brown/reddish brown with their back abdomen and hind legs often red or salmon pink. Their backs can have small black specks or dark colored blotches.
- ✔ Breeding season is during the winter and early spring from as early as late November through April and May.
- ✔ Breeds in streams, deep pools, creeks, ponds, marshes.



Nesting Birds

- ✔ Nesting birds are protected under the Migratory Bird Treaty Act (MBTA)
- ✔ The MBTA prohibits the take, killing, possession, transportation, or purchase of migratory birds, their eggs, nests, or parts.
- ✔ Birds nest on the ground, in vegetation, in trees, and on man-made structures and equipment.
- ✔ Nesting season is from February 1 – August 31.



General Wildlife Guidance

- ✔ The Project site may include a variety of common species, including big game, avian, snakes, lizards, rodents, lagomorphs, and canids.
- ✔ If wildlife is encountered, give the animal space and allow it to leave project area under their own volition prior to the Biological Monitor assisting.
- ✔ Check all equipment for snakes before handling or moving. If you encounter a snake on site, contact the Biological Monitor immediately to assist in removing the snake.
- ✔ Check for ticks at the end of each day if working in vegetation.

Report all special-status wildlife sightings and bird nests to your supervisor or the on-site biologist.

TRAINING PRESENTATION

Potentia-Viridi BESS Project

*Worker Environmental Awareness
Program (WEAP) Training*

Provided by
DUDEK

Worker Environmental Awareness Program (WEAP) Training

The WEAP will provide information on your responsibilities regarding the potentially sensitive environmental resources that may be present on the project site.

Objectives include:



KNOW YOUR ENVIRONMENT

Recognize existing and potential sensitive resources



AVOID IMPACTS

Understand measures required to avoid impacts to sensitive resources



REPORT SIGHTINGS

Know reporting procedures for sensitive resources

Sensitive Resources



BIOLOGICAL RESOURCES

- Federally listed species
- State listed species
- Nesting birds



CULTURAL AND PALEONTOLOGICAL RESOURCES

- Cultural artifacts
- Archaeological sites
- Fossils

Biological Resource Laws & Regulations

✓ **Federal Laws**

- Federal Endangered Species Act (FESA)
- Migratory Bird Treaty Act (MBTA)

✓ **State Laws**

- California Endangered Species Act (CESA)
- California Department of Fish and Game Code (CFGC)

✓ **Penalties for Violations**

- Civil penalties up to \$25,000 per violation
- Criminal penalties up to \$50,000 and imprisonment up to one year

Violations may result in construction delays, fines for you and your employer, imprisonment, and/or the loss of your job.

Big Tarplant

Blepharizonia plumosa

Rare Plant Ranking 1B.1 (Seriously threatened in California)

- ✓ Found in grasslands
- ✓ Growth/Blooming period is July-October
- ✓ Known to occur onsite at the PG&E Substation
- ✓ Avoidance measures: Environmentally Sensitive Area ("ESA") signage and buffer area will be posted around known occurrence areas.



California Tiger Salamander

Ambystoma californiense

Federally and State listed as Threatened

- ✓ Large, stocky salamander that measures up to 8 inches in length.
- ✓ Spends most of its life underground in vacant burrows in grasslands near breeding ponds.
- ✓ Breeding season emergence is primarily between November to February.
- ✓ Avoidance measures: ESA signage and buffer area will be posted around burrows and breeding areas.



California red-legged frog

Rana draytonii

Federally listed as Threatened and State listed as a Species of Special Concern

- ✓ Measures approximately 4-5 inches in length. Adults are brown/reddish brown with their back abdomen and hind legs often red or salmon pink. Their backs can have small black specks or dark colored blotches.
- ✓ Breeding season is from late November through April and May. Breeds in streams, deep pools, creeks, ponds, marshes
- ✓ Avoidance measures: ESA signage and buffer area will be posted around known breeding areas.



American Badger

Taxidea taxus

State listed as a Species of Special Concern

- ✓ Prefer crumbly soils in open grasslands, woodlands, or desert areas to dig their dens
- ✓ Females prepare grass-lined dens in early spring
- ✓ Avoidance measures: ESA signage and a buffer area will be posted around active dens



Nesting Birds

Nesting birds are protected under the Migratory Bird Treaty Act (MBTA)

- ✓ The MBTA prohibits the take, killing, possession, transportation, or purchase of migratory birds, their eggs, nests, or parts
- ✓ Nesting season:
 - February 1-August 31
- ✓ Avoidance measures: If an active bird nest is found, ESA signage and an appropriate buffer area will be established



Wildlife Impact Minimization Measures

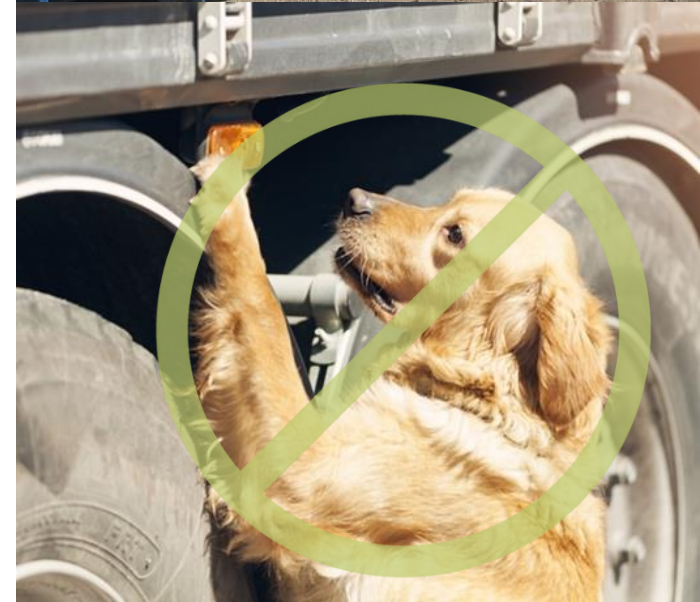
- ✓ Ensure work areas have been cleared by the appropriate environmental monitors prior to commencing work
- ✓ Restrict work activities to the work boundaries delineated with stakes and/or flagging
- ✓ Do not enter ESAs without biological monitor approval
- ✓ Spills must be cleaned up promptly with a spill kit and properly documented



Wildlife Impact Minimization Measures

- ✓ Place all waste inside of lidded trash receptacles and keep lids tightly closed
 - **Do not feed wildlife**
- ✓ Pets and firearms are prohibited at the project site
- ✓ Observe all posted speed limits
- ✓ Check for wildlife beneath parked vehicles and equipment prior to moving

Intentional collection, harming, harassment, or killing of any wildlife species is prohibited and may carry legal consequences.



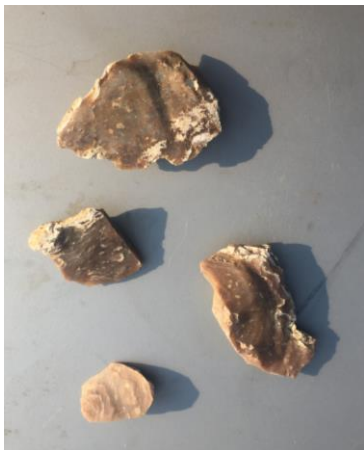
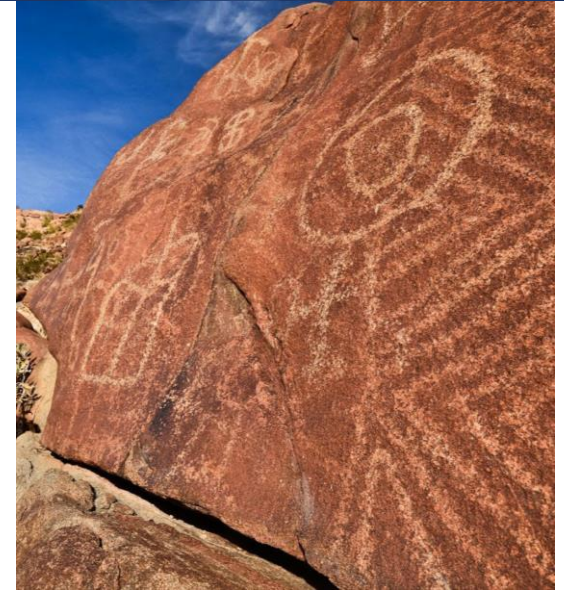
Wildlife Entrapment Prevention

- ✓ Trenches/holes with a **2-foot depth or greater** must be inspected prior to backfill, if unattended and left open prior to backfilling.
 - If left open overnight, either securely cover with plywood, or provide ramps with a maximum slope of 45-degrees
- ✓ Uncovered pipes/culverts with a **4-inch diameter or greater** must be inspected for wildlife prior to disturbance



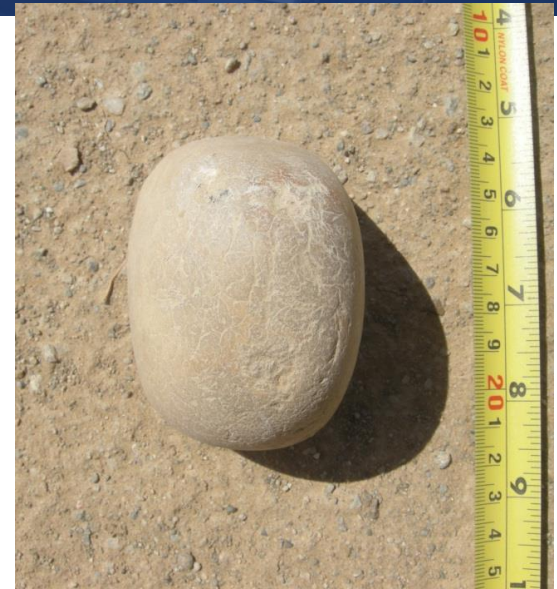
What are Cultural Resources?

- ✓ Prehistoric and historic period archaeological sites
- ✓ Native American cultural resources
 - Artifacts
 - Human Remains
- ✓ Historic buildings and structures



Prehistoric Resources

- ✓ Stone tools or toolmaking debris
- ✓ Darkened or stained soils known as “midden”
- ✓ Stone milling equipment such as mortars, pestles, handstones, and milling slabs
- ✓ Battered stone tools such as hammerstones and pitted stones
- ✓ Human remains



Historic Resources

- ✓ Burial plots
- ✓ Structural foundations
- ✓ Deposits or trash scatters of metal, glass, or ceramic refuse



Cultural Resource Laws & Regulations

✓ Federal Laws

- Native American Graves Protection and Repatriation Act of 1990
- National Historic Preservation Act of 1966
- Public Resources Code Section 5097.98
- Assembly Bill 52
- Health and Safety Code, Sections 7050.5
- Penal Code, Section 622.5

✓ State Laws

- California Environmental Quality Act
- California Native American Graves Protection and Repatriation Act of 2001



➤ **All cultural resource discoveries are strictly confidential**

Violations may result in construction delays, fines for you and your employer, imprisonment, and/or the loss of your job.

Paleontological Resources

- ✓ Fossilized remains, traces, or imprints of once-living organisms
- ✓ Preserved in rocks or sediments



Paleontological Resource Laws & Regulations

✓ Federal Laws

- National Environmental Policy Act
- American Antiquities Act of 1906
- National Historic Preservation Act of 1966
- Paleontological Resources Protection Act of 2009

✓ State Laws

- California Environmental Quality Act

Unauthorized collecting or disturbing of fossils is illegal and can result in fines and/or imprisonment.



Unanticipated Discoveries

- ✓ **Unanticipated discoveries may include:**
 - Buried resources
 - Human remains
 - Fossils

- ✓ **If an unanticipated discovery occurs:**
 - Do not touch the potential resource
 - Halt work in the immediate vicinity of potential resources
 - Notify the designated point of contact for cultural resources
 - Do not resume work until the cultural resources team gives the go-ahead

TRAINING PRESENTATION

Thank you for
your participation!