

| <b>DOCKETED</b>         |   |
|-------------------------|---|
| <b>Docket Number:</b>   | 24-OIIP-02  |
| <b>Project Title:</b>   | Informational Proceeding on Lithium Valley Vision               |
| <b>TN #:</b>            | 255786  |
| <b>Document Title:</b>  | Imperial County Presentation on Lithium Valley                  |
| <b>Description:</b>     | Slide deck for Imperial County's presentation on Lithium Valley |
| <b>Filer:</b>           | Erik Stokes   |
| <b>Organization:</b>    | California Energy Commission                                    |
| <b>Submitter Role:</b>  | Commission Staff  |
| <b>Submission Date:</b> | 4/18/2024 2:11:52 PM  |
| <b>Docketed Date:</b>   | 4/18/2024   |



# LITHIUM VALLEY

## A Leader in Clean Lithium

Sustainable Lithium Recovery from Geothermal Brine

**Southern California**



# Lithium Valley Highlights

- Overview of Lithium Valley
- Specific Plan/Programmatic Environmental Impact Report
- Health Impact Assessment
- Clean Tech Hub Consortium
- EDA Recompete Grant
- Workforce Development
- Education & Community Engagement
- Planning for the Future





# What is Lithium?

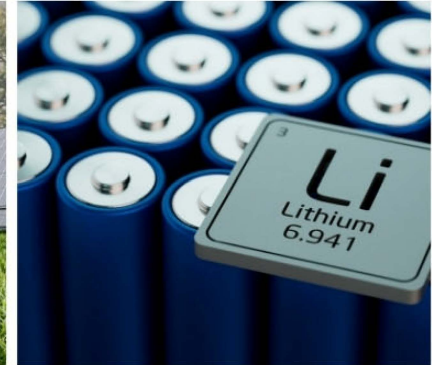
Lithium is a chemical element that can be used in medicine as well as to create batteries

Department of Energy and Lawrence Berkeley National Labs Study in 2023 validated:

**3400kilotons** of Lithium in the SKGRA

## Why Now?

- Economically viable
- Sustainable domestic lithium
- National electrification goals





# Traditional Lithium Mining



Evaporation Ponds | Chile

**Catastrophic to  
the Environment**

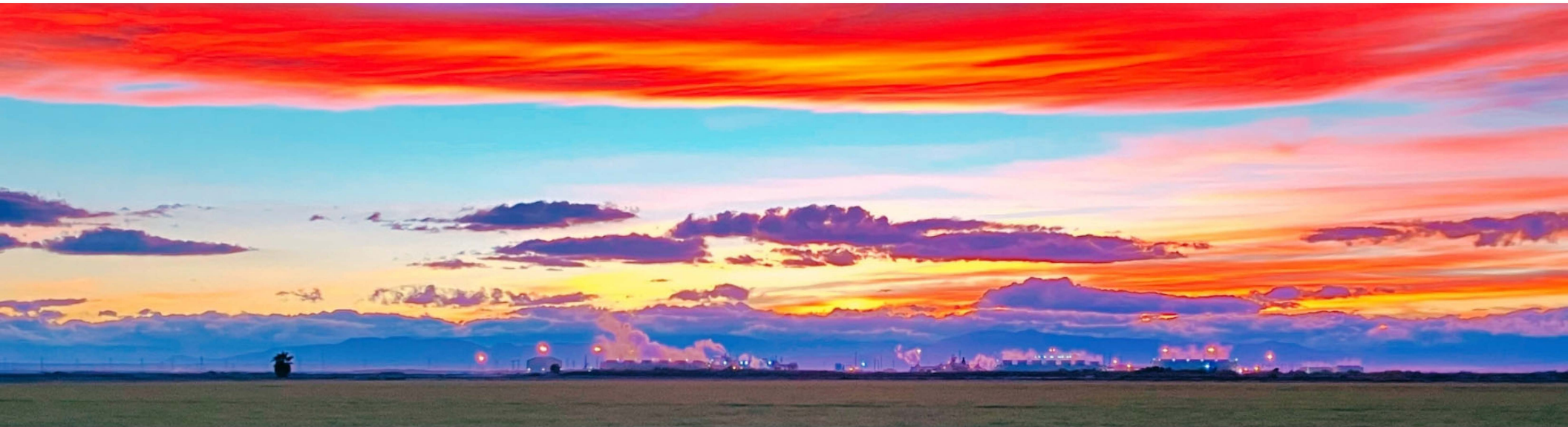


Hard Rock Mining | Australia

Traditionally, lithium mining has predominantly occurred through hard rock mining and evaporation ponds, which are both catastrophic to the environment.

---

**There is NO MINING in Lithium Valley**



# Lithium Recovery from Geothermal Brine

Clean Sustainable Solution | Produced in Harmony with Agriculture | Sourced in the US



Renewable  
Energy



Small physical  
footprint



No mining or  
evaporation  
ponds

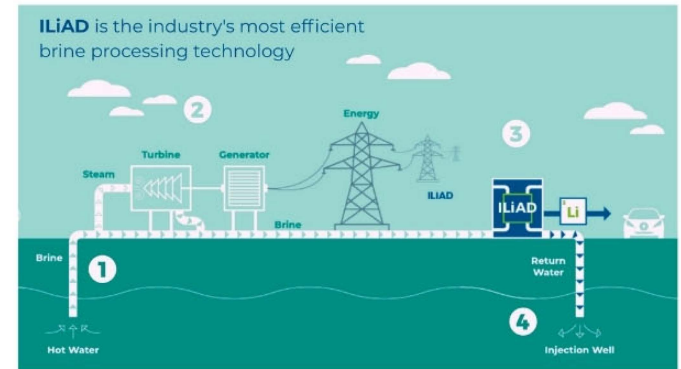


# Companies Exploring Lithium



*"Designing an efficient, modular engineering framework means we can replicate these facilities at each project stage to scale up faster and more cost-effectively."*

- Rod Colwell, CEO







# Advancing Lithium Valley

## 2021

- Lithium Valley Blue Ribbon Commission
- Geothermal Development Working Group

## 2022

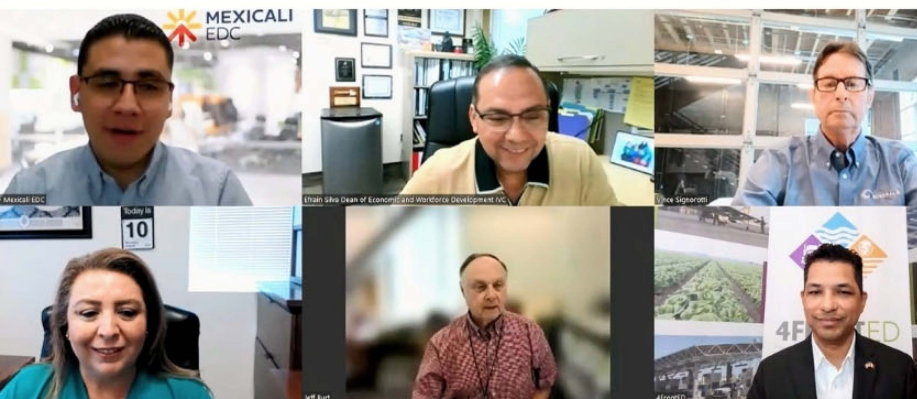
- Lithium Valley Economic Investment Opportunity Plan
  - Local, Regional, & National Media Outreach
- Preparation of Salton Sea Renewable Resource Specific Plan/Programmatic Environmental Impact Report (PEIR)
- SB 125 is passed
- Off-Site Meetings, Letters, and Public Presentations







# Advancing Lithium Valley



## 2023

- Community Workshops
  - Specific Plan/PEIR
  - Tax Revenues Listening Sessions
    - Board Chambers and across Imperial County
- Collaboration with Community-Based Organizations

## 2024

- Health Assessment in collaboration with SDSU
- Clean Tech Hub Consortium kick-off
- Workforce roadmap
- Lithium Valley educational campaign



# SB 125 Overview

**\$5,000,000 Allocated to County of Imperial for Geothermal Energy Development & Lithium Extraction**

- **\$3,850,000** to Prepare Programmatic Environmental Impact Report & Health Impact Assessment, and to Support Community Outreach
- **\$720,000** Engagement by Community-Based Organizations
  - County held an RFP and awards were given to:
  - Comite Civico del Valle: \$363,000
  - IV Equity and Justice: \$170,000
  - Los Amigos de la Comunidad: \$89,000
  - Raizes: \$72,000
  - Imperial Valley LGBT Resource Center: \$26,000
- **\$80,000** Tribal Engagement
- **\$350,000** to Support the Activities of an Ombudsperson to Engage with Stakeholders on Lithium Extraction, Rare-Earth Minerals, & Renewable Energy Generation





# Specific Plan and PEIR

## Lead Consultants: RICK and Dudek

- Framework and guidance for necessary infrastructure and facilities
- Streamline future development/permitting
  - *Ex: Renewable energy facilities, mineral recovery, lithium battery manufacturing*
- Land area: ~51,786-acre area adjacent to the Salton Sea

## The PEIR will analyze potential impacts associated with all CEQA topics:

- |                                  |                                      |
|----------------------------------|--------------------------------------|
| • Aesthetics                     | • Mineral Resources                  |
| • Agriculture/Forestry Resources | • Noise                              |
| • Air Quality                    | • Population and Housing             |
| • Biological Resources           | • Public Services                    |
| • Cultural Resources             | • Recreation                         |
| • Energy                         | • Transportation                     |
| • Geology/Soils                  | • Tribal Cultural Resources          |
| • Greenhouse Gas Emissions       | • Utilities and Service Systems      |
| • Hazards/Hazardous Materials    | • Wildfire                           |
| • Hydrology/Water Quality        | • Mandatory Findings of Significance |
| • Land Use and Planning          |                                      |





# Baseline Report

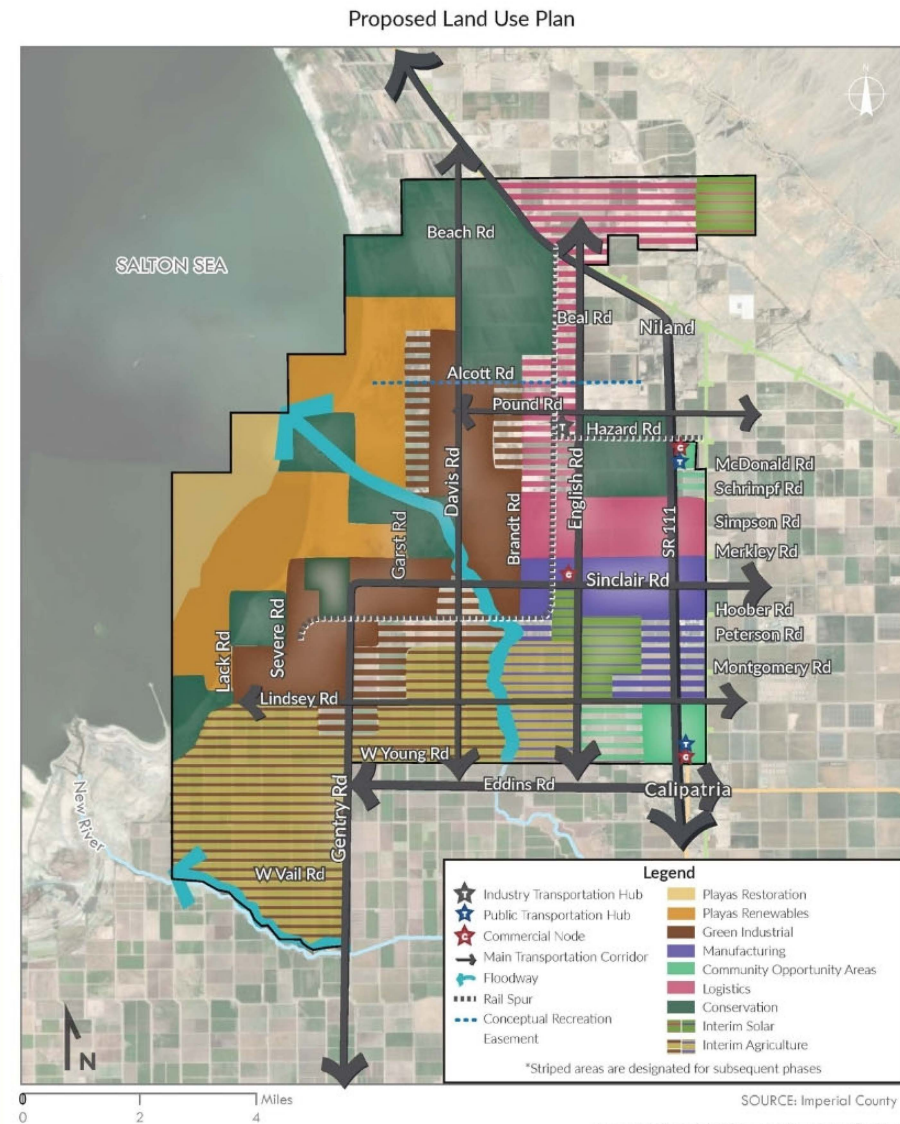
The purpose of the Lithium Valley Baseline Report (Baseline Report) is to establish an inventory of existing conditions within the Lithium Valley Study Area

## Infrastructure Assessment

Provides a comprehensive evaluation of the existing infrastructure located within and surrounding the Study Area

### Some of the Keys Areas Evaluated:

- Land Use
- Market Conditions
- Social Conditions
- Public Services and Resources
- Utilities
- Low-Carbon Energy Resources
- Circulation and Goods Movement







# Lithium Valley Spending Plan

## SB 125 Establishes a Lithium Excise Tax

- \$400/mt for the first 20,000 tons of LCE extracted
- \$600/mt extracted from over 20,000 up to 30,000mt
- \$800/mt for LCE extracted over 30,000mt

## 80% of Tax will go to Imperial County

- Public comment is still open to determine the communities allocation priorities

## 20% to Salton Sea Restoration

## Common Themes from Public Comments

- |                         |                          |
|-------------------------|--------------------------|
| • Community/Recreation  | • Housing                |
| • Infrastructure        | • General/Administration |
| • Education             | • Workforce              |
| • Medical/Public Health | • Public Services        |
| • Environment           | • Economic Development   |



# Health Impact Assessment

SDSU Foundation and Dudek are working in coordination with Imperial County on Health Assessment's pertaining to Lithium Valley and the Specific Plan/PEIR

- **SDSU Health Impact Assessment activities started July 2023**
  - Hired research personnel
  - Staff and Community Health Worker training completed
  - Survey database set (RedCap)
  - Protocols developed
  - Sampling material and equipment secured
  - Systematic literature review and secondary data collection conducted
- **Institutional Review Board (IRB) approval received December 2023 by SDSU**
  - Participant recruitment efforts started in January 2024
  - As of March 2024, 4 focus groups completed, reaching 24 participants
  - As of April 10, 2024, 130 out of 150 participant assessments completed
  - In-depth environmental assessments of 50 homes are scheduled to start the week of April 22nd

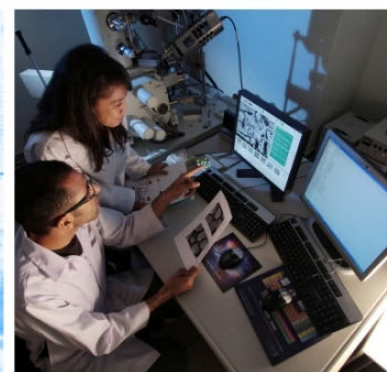
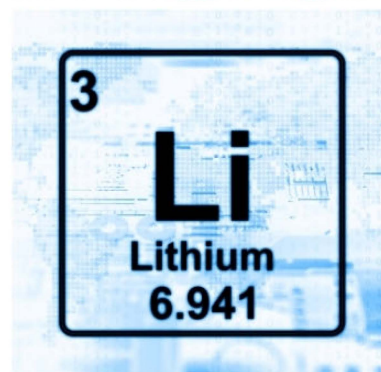
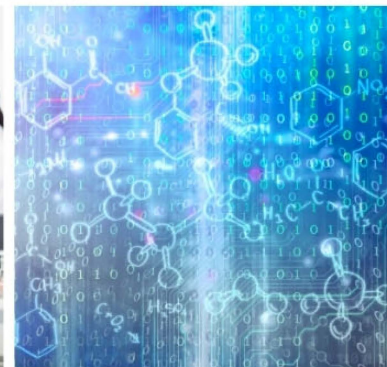


# Lithium Valley Clean Tech Strategy Development Consortium



San Diego State  
University

**Economic Development Administration awarded \$500,000** to develop the regional coalition and strategic framework to further develop and implement direct lithium extraction from regional lithium brine deposits, contributing to a sustainable, inclusive, advanced-energy ecosystem in Southern California and securing the national lithium-based energy supply chain







# EDA Recompete Grant

**TOP 22** out of 565

“

“Being one of 22 finalists out of 565 applications nationwide is a testament to the regional collaborative approach and hard work of everyone involved, and we are very motivated and committed to carrying this across the finish line,” said **Representative Raul Ruiz (CA-25)**. “I look forward to continuing to work with our Lithium Valley partners in developing transformative initiatives that will make the biggest difference for the community.”

”

## \$50 million Lithium Valley Recompete Plan:

1. Labor Hub
2. Small Business Incubator
3. Workforce Development
4. Education and Training
5. Fenceline Community Prioritization
6. Supportive Services
7. Marketing and Community Engagement
8. Admin/Indirect/Staffing/Benefits





# Workforce Development

## Valley Works

- \$650,000 - Lithium Valley Workforce and Economic Development Needs Assessment Grant
  - Workforce and opportunities roadmap
- 

## Imperial Valley College - LIFT

- Lithium Industry Force Training
- Workforce pipeline with industry and Imperial County
- 1 year certification programs - high school to career
  - Plant Operator
  - Chemical Lab Technician
  - Instrumentation Technician

# Education & Community

## SB125 CBO Engagement

- 5 Local Environmental Justice groups have been conducting community engagement since June 2023

## Launching an Educational Platform

- Imperial County is creating a new Lithium Valley website that explains renewable energy in a simple & engaging way

## Upcoming Classroom Campaign

- Imperial County is developing a K-12 Lithium Valley focused campaign in collaboration with educational partners

## Continued Presentations & Public Comment

- We are committed to ongoing community, investor, and stakeholder conversations to advance Lithium Valley
- Calendar of Local and National events planned







# Limitless Horizons

## Key Industry Development

Lithium Valley is ideal for many businesses including:

- Battery Manufacturing
- Recycling of Materials/Waste
- Auto Manufacturing
- Data Centers
- Hydrogen Production
- Battery Storage

## Imperial County Lithium Users Tax Rebate

- Imperial County lithium suppliers will receive a tax rebate for lithium produced in Imperial County and sold to manufacturers in Imperial County
- Companies located in Imperial County who purchase Imperial County sourced lithium for a value-added product will also receive the tax rebate

**Tax Rebate: \$50/mt | 5,000mt = \$250,000**



# Imperial County Board of Supervisors



**Jesus Escobar**  
District 1



**Luis Plancarte**  
District 2, Chair



**Michael Kelley**  
District 3



**Ryan Kelley**  
District 4



**John Hawk**  
District 5, Vice Chair



# Lithium Valley Executive Team



**Miguel Figueroa**  
Chief Executive  
Officer



**Rebecca  
Terrazas-Baxter**  
Assistant CEO



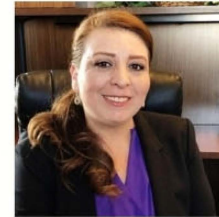
**Bari Bean**  
Deputy CEO -  
Natural Resources



**John Gay**  
Director of Public  
Works



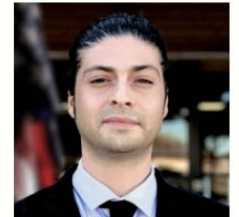
**Jim Minnick**  
Director of Planning  
& Development



**Priscilla Lopez**  
Director of Workforce  
Development



**Janette Angulo**  
Director of Public  
Health



**Eddie Lopez**  
Public Information  
Officer



# Harvesting Clean Energy in **Harmony with Agriculture**



**SUSTAINABLE LITHIUM RECOVERED  
FROM GEOTHERMAL BRINE**







# Connect With Our Team



**Follus Us**

@ImperialCounty



**Contact**

[LithiumValley@co.imperial.ca.us](mailto:LithiumValley@co.imperial.ca.us)



**Follus Us**

@ImperialCounty



**Discover More**

[www.LithiumValley.ImperialCounty.org](http://www.LithiumValley.ImperialCounty.org)