

<b>DOCKETED</b>	
<b>Docket Number:</b>	17-MISC-01
<b>Project Title:</b>	California Offshore Renewable Energy
<b>TN #:</b>	255194
<b>Document Title:</b>	State Lands Commission Ports and Waterfront Infrastructure Presentation
<b>Description:</b>	State Lands Commission Ports and Waterfront Infrastructure Presentation from the 3.20.24 AB 525 Workshop
<b>Filer:</b>	susan fleming
<b>Organization:</b>	California Energy Commission
<b>Submitter Role:</b>	Commission Staff
<b>Submission Date:</b>	3/20/2024 3:26:26 PM
<b>Docketed Date:</b>	3/20/2024



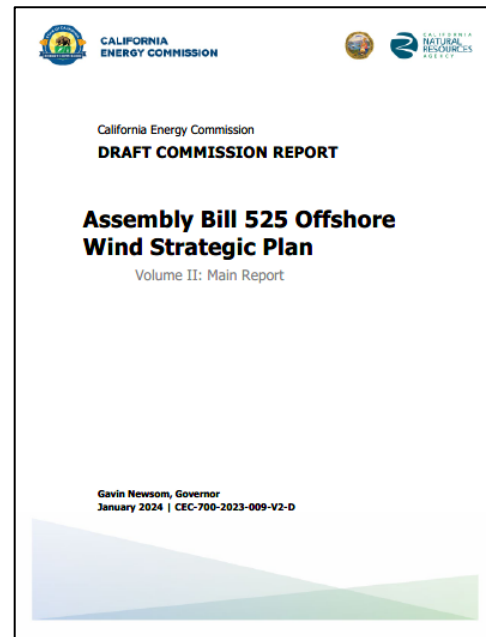
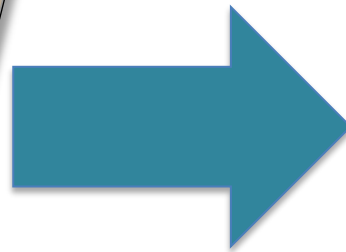
# Chapter 6: Port and Waterfront Infrastructure

March 20, 2024

CALIFORNIA STATE LANDS COMMISSION



# REPORTS INFORMING AB 525 PORTS CHAPTER



Reports available for download:  
[slc.ca.gov/renewable-energy/offshore-wind-energy-development](https://slc.ca.gov/renewable-energy/offshore-wind-energy-development)

# THREE MAIN PORT TYPES

1. Staging and integration (S&I)
2. Manufacturing/fabrication (MF)
3. Operations and maintenance (O&M)

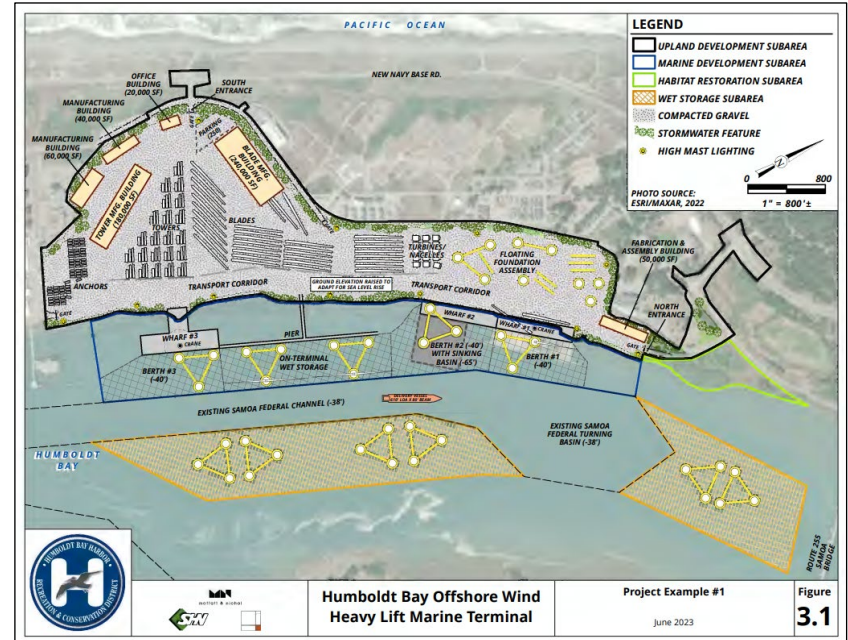


Depiction by Moffatt & Nichol

# STAGING AND INTEGRATION

Site where components are received for assembly of the turbines

- 30-100 acres
- No overhead restrictions (e.g., bridges)
- Humboldt, Long Beach, Los Angeles are likely sites

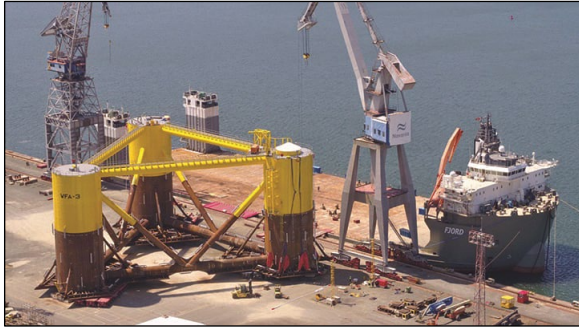


POLB artistic rendering; helpful 2-minute video:  
<https://youtu.be/i2rdYDeh5V4>

# MANUFACTURING/FABRICATION

Site for manufacturing of larger components from raw materials

- 30-100 acres
- Wharf loading capacity >6,000 pounds per ft<sup>2</sup>
- Can be specific to a component, like nacelles
- Must be located on a waterway; many more options than S&I



Floating platform



Nacelle

# OPERATION AND MAINTENANCE

Provide for the transfer of crews needed to perform minor maintenance and repair of turbines at the wind farms.

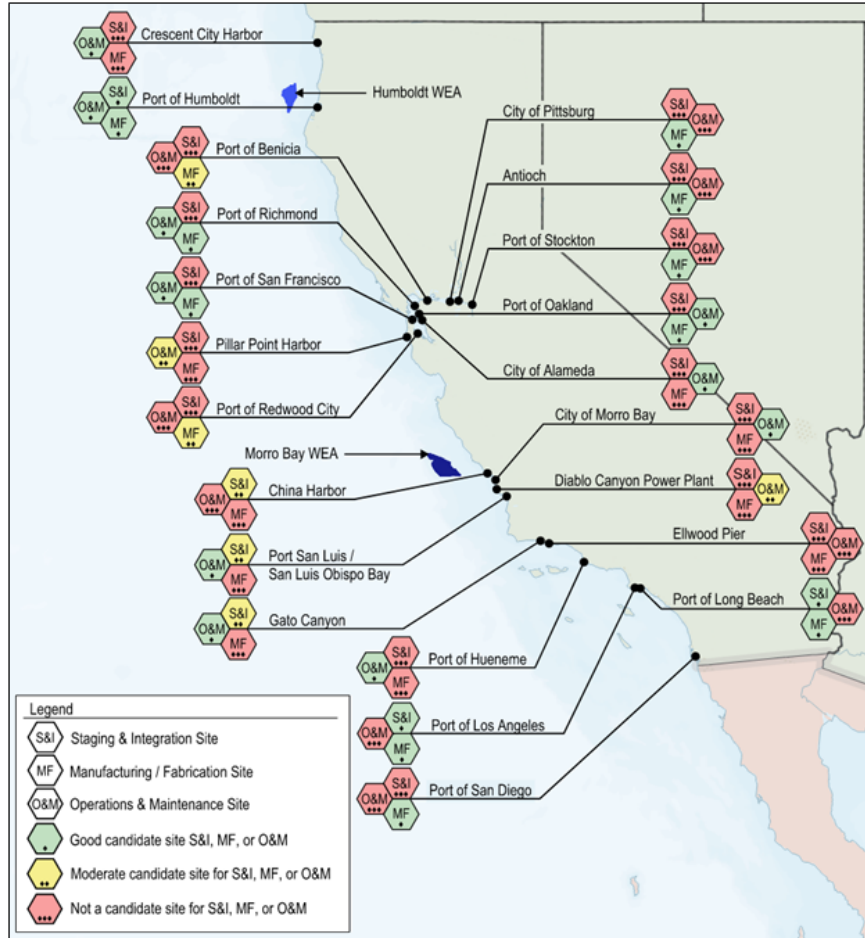
- 2-10 acres
- Wharf doesn't need to be nearly as strong
- Closer to the wind farm, the better



Crew transfer vessel



Service operation vessel



# CONCLUSIONS FROM PORT READINESS PLAN

- Utilization of a “multi-port strategy”
- Existing ports are preferable to undeveloped sites
- \$11-12 billion in port upgrades needed



## CHAPTER 6 RECOMMENDATIONS

- Continue to support...port development and readiness framework
  - Coordinated with larger West Coast port network evaluation efforts and supply chain development.
- Continue to collaborate with ports, tribal governments, underserved communities, and other stakeholders to understand the unique challenges and opportunities
- Continue to engage to explore options to support local supply chain development.



[www.slc.ca.gov](http://www.slc.ca.gov)

# THANK YOU & QUESTIONS

Amy Vierra  
Division of Environmental  
Science, Planning and  
Management

[Amy.vierra@slc.ca.gov](mailto:Amy.vierra@slc.ca.gov)

916.562.0025



California State  
Lands Commission

