

DOCKETED

Docket Number:	23-OPT-01
Project Title:	Fountain Wind Project
TN #:	254345
Document Title:	fwp_aquatic_feature_jurisdictionality_fig1
Description:	N/A
Filer:	Caitlin Barns
Organization:	Stantec Consulting Services, Inc.
Submitter Role:	Applicant Consultant
Submission Date:	2/6/2024 8:46:18 AM
Docketed Date:	2/6/2024

V:\1950\active\Task_Owner_and_others\Non-BC1956_Jobs\185703743003_data\gis_cad\gis\mxd\2024\WETLANDS_02b_ProjectComponents_and_AquaticImpacts_Jurisdictional.mxd Revised: 2024-01-29 By: khoward



Legend

Study Area: 2,856 acres

Crossing Location Identifier

Resource Impact Type

- Permanent Impact (fill)
- Permanent Vegetation Clearing
- Temporary Disturbance (no fill)
- No Impact

Project Components and Disturbance Areas

- Turbine (with structure number)
- Met Towers
- Operations and Maintenance Facility
- Laydown Yard/Staging Area
- Batch Plants
- Substation
- Permanent Disturbance
- Temporary Disturbance

Jurisdictional Agency

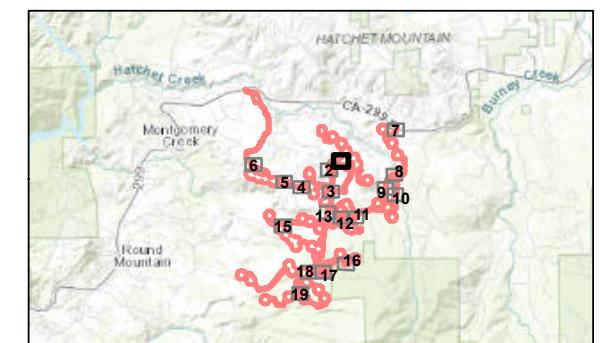
- U.S. Army Corps of Engineers
- Regional Water Quality Control Board
- California Department of Fish and Wildlife



0 200 Feet
(At original document size of 11x17)
1:2,400

- Notes**
- Coordinate System: NAD 1983 UTM Zone 10N
 - Background: ESRI World Imagery

Printed 1/29/2024



Project Location: Shasta County, California
Prepared by JED on 2024-18-01
Technical Review by KH on 2024-18-01

Client/Project: ConnectGen Fountain Wind Energy
203723159

Figure No.

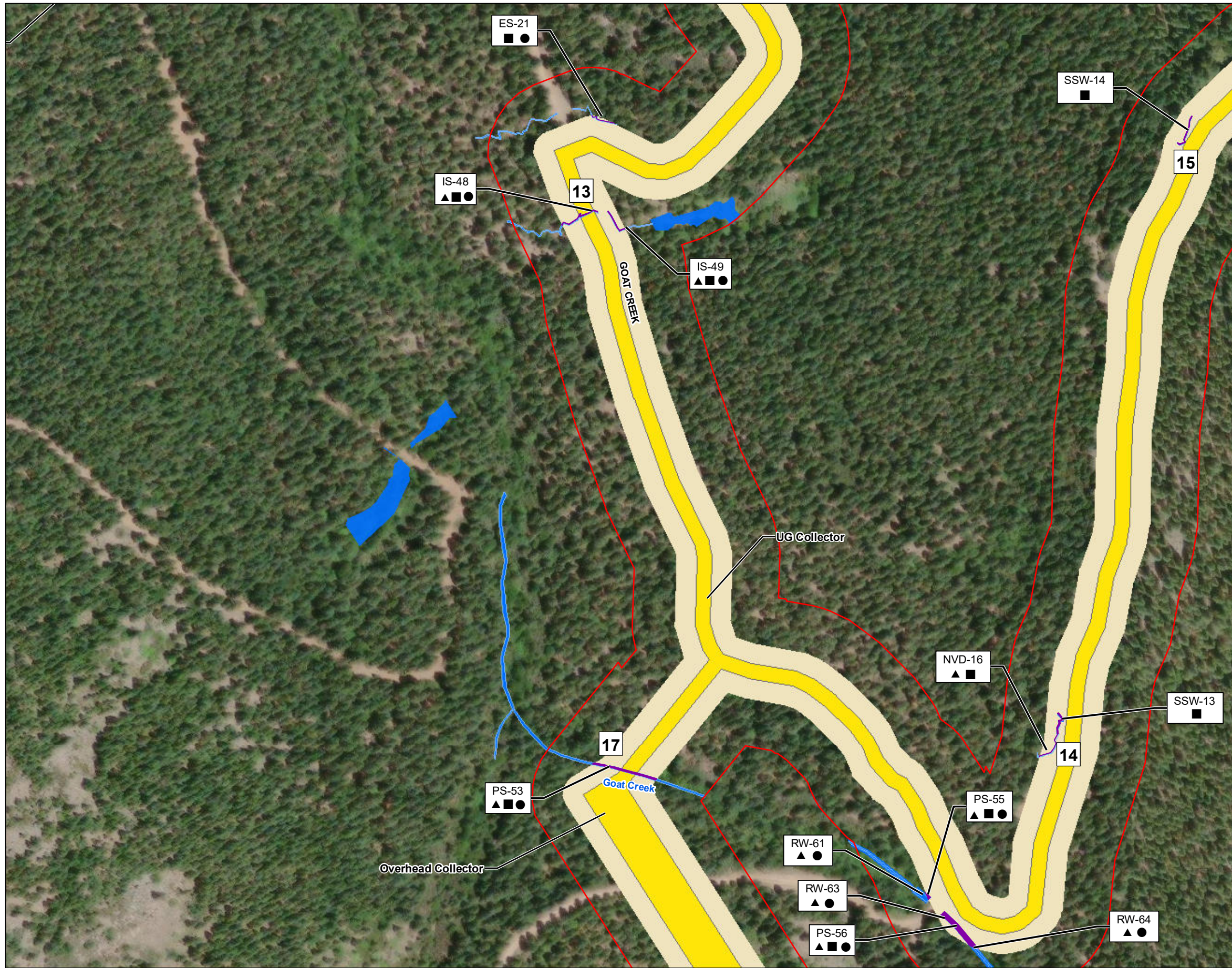
1

Title

Project Components and Potential Impacts to Waters



V:\1950\active\Task_Owner and other Non-BC1956_Jobs\185703743003_data\gis_cad\gis\mxd\2024\WETLANDS_02b_ProjectComponents_and_AquaticImpacts_Jurisdictional.mxd Revised: 2024-01-29 By: khoward



Legend

Study Area: 2,856 acres

Crossing Location Identifier

Resource Impact Type

- Permanent Impact (fill)
- Permanent Vegetation Clearing
- Temporary Disturbance (no fill)
- No Impact

Project Components and Disturbance Areas

- Turbine (with structure number)
- Met Towers
- Operations and Maintenance Facility
- Laydown Yard/Staging Area
- Batch Plants
- Substation
- Permanent Disturbance
- Temporary Disturbance

Jurisdictional Agency

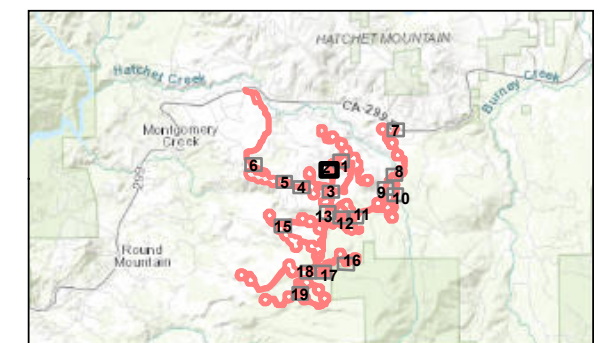
- U.S. Army Corps of Engineers
- Regional Water Quality Control Board
- California Department of Fish and Wildlife



0 200 Feet
(At original document size of 11x17)
1:2,400

- Notes**
1. Coordinate System: NAD 1983 UTM Zone 10N
 2. Background: ESRI World Imagery

Printed 1/29/2024



Project Location
Shasta County
California

Prepared by JED on 2024-18-01
Technical Review by KH on 2024-18-01

Client/Project
ConnectGen
Fountain Wind Energy

203723159

Figure No.

1

Title
Project Components and Potential Impacts to Waters

V:\1950\active\Task_Owner and other Non-BC1956_Jobs\185703743003_data\gis_cad\gis\mxd\2024\NWE_TLANDS_02b_ProjectComponents_and_AquaticImpacts_Jurisdictional.mxd Revised: 2024-01-29 By: khoward



Legend

Study Area: 2,856 acres

Crossing Location Identifier

Resource Impact Type

Permanent Impact (fill)

Permanent Vegetation Clearing

Temporary Disturbance (no fill)

No Impact

Project Components and Disturbance Areas

Turbine (with structure number)

Met Towers

Operations and Maintenance Facility

Laydown Yard/Staging Area

Batch Plants

Substation

Permanent Disturbance

Temporary Disturbance

Jurisdictional Agency

U.S. Army Corps of Engineers

Regional Water Quality Control Board

California Department of Fish and Wildlife

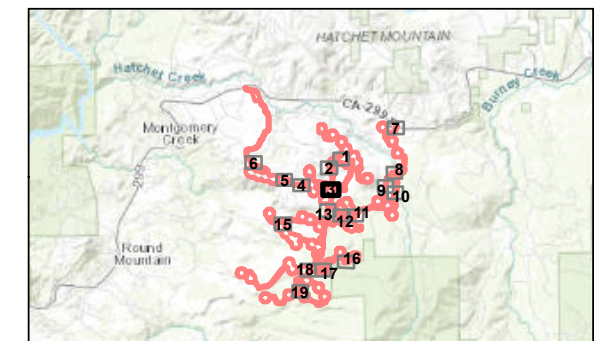


0 200 Feet
(At original document size of 11x17)
1:2,400

Notes

- 1. Coordinate System: NAD 1983 UTM Zone 10N
- 2. Background: ESRI World Imagery

Printed 1/29/2024



Project Location
Shasta County
California

Prepared by JED on 2024-18-01
Technical Review by KH on 2024-18-01

Client/Project
ConnectGen
Fountain Wind Energy

203723159

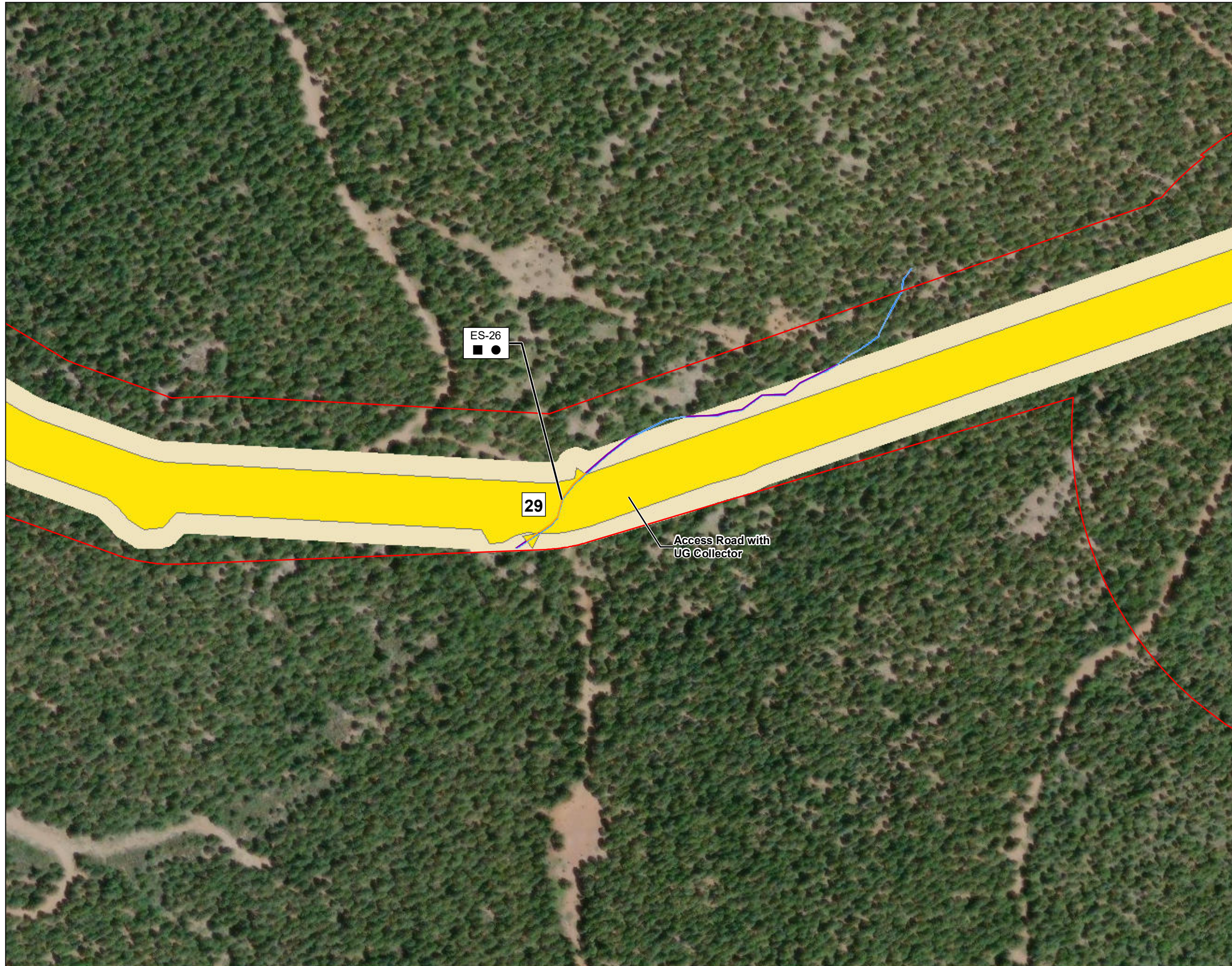
Figure No.

1

Title

Project Components and Potential Impacts to Waters

V:\1950\active\Task_Owner and other Non-BC1956_Jobs\185703743003_data\gis_cad\gis\mxd\2024\WETLANDS_02b_ProjectComponents_and_AquaticImpacts_Jurisdictional.mxd Revised: 2024-01-29 By: khoward



Legend

Study Area: 2,856 acres

Crossing Location Identifier

Resource Impact Type

Permanent Impact (fill)

Permanent Vegetation Clearing

Temporary Disturbance (no fill)

No Impact

Project Components and Disturbance Areas

Turbine (with structure number)

Met Towers

Operations and Maintenance Facility

Laydown Yard/Staging Area

Batch Plants

Substation

Permanent Disturbance

Temporary Disturbance

Jurisdictional Agency

U.S. Army Corps of Engineers

Regional Water Quality Control Board

California Department of Fish and Wildlife

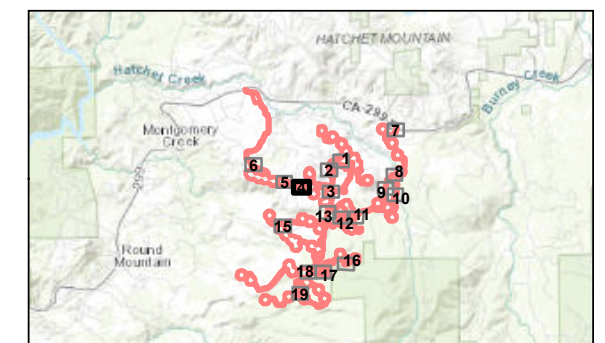


0 200 Feet
(At original document size of 11x17)
1:2,400

Notes

- 1. Coordinate System: NAD 1983 UTM Zone 10N
- 2. Background: ESRI World Imagery

Printed 1/29/2024



Project Location
Shasta County
California

Prepared by JED on 2024-18-01
Technical Review by KH on 2024-18-01

Client/Project
ConnectGen
Fountain Wind Energy

203723159

Figure No.

1

Title

Project Components and Potential Impacts to Waters

V:\1950\active\Task_Owner and other Non-BC1956_Jobs\18570374303_data\gis_cad\gis\mxd\2024\WETLANDS_02b_ProjectComponents_and_AquaticImpacts_Jurisdictional.mxd Revised: 2024-01-29 By: khoward



Legend

Study Area: 2,856 acres

Crossing Location Identifier

Resource Impact Type

Permanent Impact (fill)

Permanent Vegetation Clearing

Temporary Disturbance (no fill)

No Impact

Project Components and Disturbance Areas

Turbine (with structure number)

Met Towers

Operations and Maintenance Facility

Laydown Yard/Staging Area

Batch Plants

Substation

Permanent Disturbance

Temporary Disturbance

Jurisdictional Agency

U.S. Army Corps of Engineers

Regional Water Quality Control Board

California Department of Fish and Wildlife

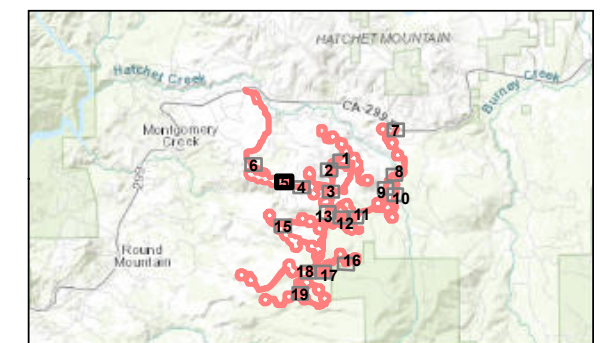


0 200 Feet
(At original document size of 11x17)
1:2,400

Notes

- 1. Coordinate System: NAD 1983 UTM Zone 10N
- 2. Background: ESRI World Imagery

Printed 1/29/2024



Project Location
Shasta County
California

Prepared by JED on 2024-18-01
Technical Review by KH on 2024-18-01

Client/Project
ConnectGen
Fountain Wind Energy

203723159

Figure No.

1

Title

Project Components and Potential Impacts to Waters

V:\1950\active\Task_Owner and other Non-BC1956_Jobs\185703743003_data\gis_cad\gis\mxd\2024\NWE_TLANDS_02b_ProjectComponents_and_AquaticImpacts_Jurisdictional.mxd Revised: 2024-01-29 By: khoward



Legend

Study Area: 2,856 acres

Crossing Location Identifier

Resource Impact Type

Permanent Impact (fill)

Permanent Vegetation Clearing

Temporary Disturbance (no fill)

No Impact

Project Components and Disturbance Areas

Turbine (with structure number)

Met Towers

Operations and Maintenance Facility

Laydown Yard/Staging Area

Batch Plants

Substation

Permanent Disturbance

Temporary Disturbance

Jurisdictional Agency

U.S. Army Corps of Engineers

Regional Water Quality Control Board

California Department of Fish and Wildlife

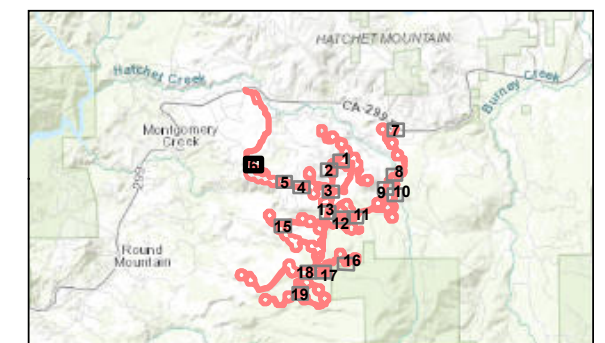


0 200 Feet
(At original document size of 11x17)
1:2,400

Notes

- 1. Coordinate System: NAD 1983 UTM Zone 10N
- 2. Background: ESRI World Imagery

Printed 1/29/2024



Project Location
Shasta County
California

Prepared by JED on 2024-18-01
Technical Review by KH on 2024-18-01

Client/Project
ConnectGen
Fountain Wind Energy

203723159

Figure No.

1

Title

Project Components and Potential Impacts to Waters

Page 6 of 19



V:\1950\active\Task Owner and other Non-BC1956 Jobs\18570374303_data\gis_cad\gis\mxd\2024\WETLANDS_02b_ProjectComponents_and_AquaticImpacts_Jurisdictional.mxd Revised: 2024-01-29 By: khoward



Legend

Study Area: 2,856 acres

Crossing Location Identifier

Resource Impact Type

Permanent Impact (fill)

Permanent Vegetation Clearing

Temporary Disturbance (no fill)

No Impact

Project Components and Disturbance Areas

Turbine (with structure number)

Met Towers

Operations and Maintenance Facility

Laydown Yard/Staging Area

Batch Plants

Substation

Permanent Disturbance

Temporary Disturbance

Jurisdictional Agency

U.S. Army Corps of Engineers

Regional Water Quality Control Board

California Department of Fish and Wildlife

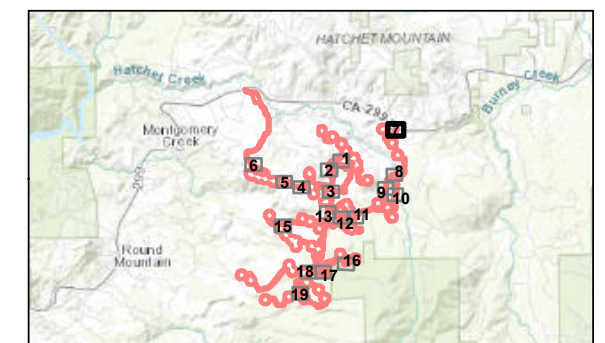


0 200 Feet
(At original document size of 11x17)
1:2,400

Notes

- 1. Coordinate System: NAD 1983 UTM Zone 10N
- 2. Background: ESRI World Imagery

Printed 1/29/2024



Project Location
Shasta County
California

Prepared by JED on 2024-18-01
Technical Review by KH on 2024-18-01

Client/Project
ConnectGen
Fountain Wind Energy

203723159

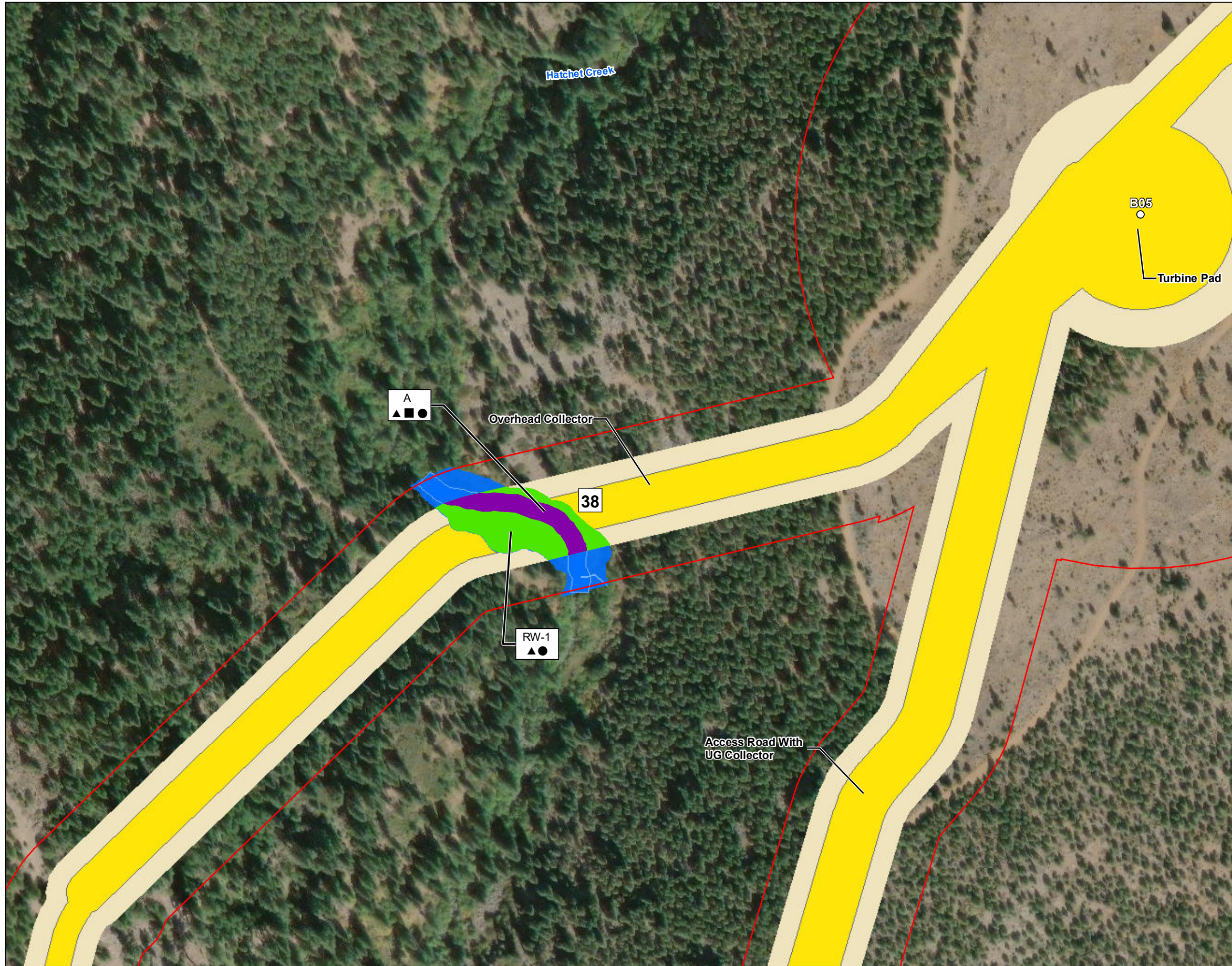
Figure No.

1

Title

Project Components and Potential Impacts to Waters

V:\1950\active\Task_Owner_and_other_Non-BC1956_Jobs\185703743003_data\gis_cad\gis\mxd\2024\NWE_TLANDS_02b_ProjectComponents_and_AquaticImpacts_Jurisdictional.mxd Revised: 2024-01-29 By: khoward



Legend

Study Area: 2,856 acres

Crossing Location Identifier

Resource Impact Type

- Permanent Impact (fill)
- Permanent Vegetation Clearing
- Temporary Disturbance (no fill)
- No Impact

Project Components and Disturbance Areas

- Turbine (with structure number)
- Met Towers
- Operations and Maintenance Facility
- Laydown Yard/Staging Area
- Batch Plants
- Substation
- Permanent Disturbance
- Temporary Disturbance

Jurisdictional Agency

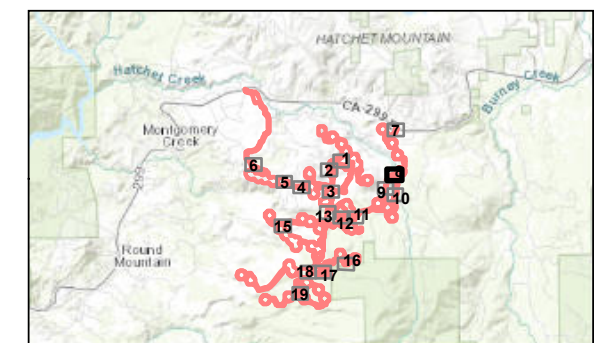
- U.S. Army Corps of Engineers
- Regional Water Quality Control Board
- California Department of Fish and Wildlife



0 200 Feet
 (At original document size of 11x17)
 1:2,400

- Notes**
1. Coordinate System: NAD 1983 UTM Zone 10N
 2. Background: ESRI World Imagery

Printed 1/29/2024



Project Location
 Shasta County
 California

Prepared by JED on 2024-18-01
 Technical Review by KH on 2024-18-01

Client/Project
 ConnectGen
 Fountain Wind Energy

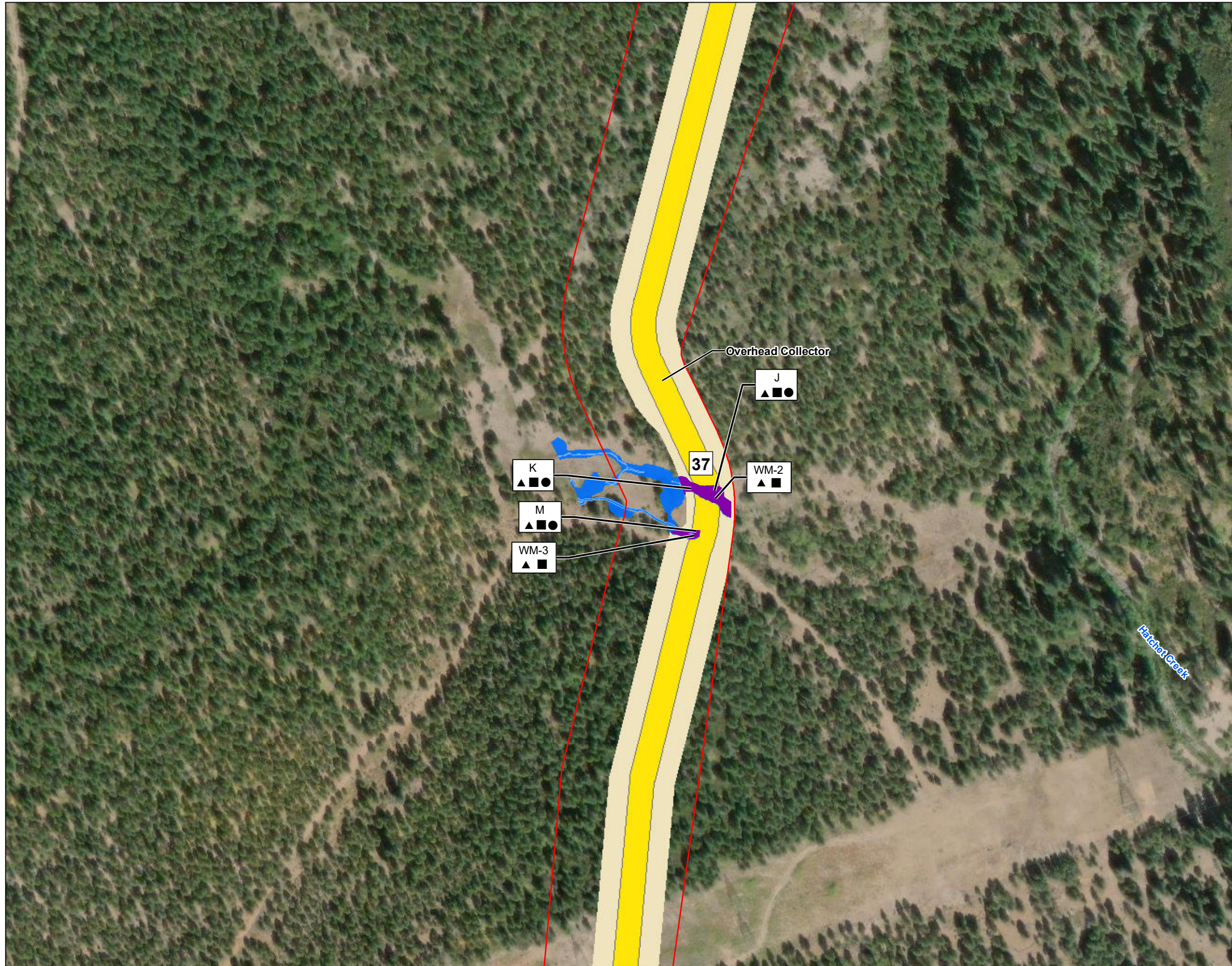
203723159

Figure No.

1

Title
 Project Components and Potential Impacts to Waters

V:\1950\active\Task_Owner_and_others\Non-BC1956_Jobs\185703743003_data\gis_cad\gis\mxd\2024\NWE_TLANDS_02b_ProjectComponents_and_AquaticImpacts_Jurisdictional.mxd Revised: 2024-01-29 By: khoward



Legend

Study Area: 2,856 acres

Crossing Location Identifier

Resource Impact Type

Permanent Impact (fill)

Permanent Vegetation Clearing

Temporary Disturbance (no fill)

No Impact

Project Components and Disturbance Areas

Turbine (with structure number)

Met Towers

Operations and Maintenance Facility

Laydown Yard/Staging Area

Batch Plants

Substation

Permanent Disturbance

Temporary Disturbance

Jurisdictional Agency

U.S. Army Corps of Engineers

Regional Water Quality Control Board

California Department of Fish and Wildlife

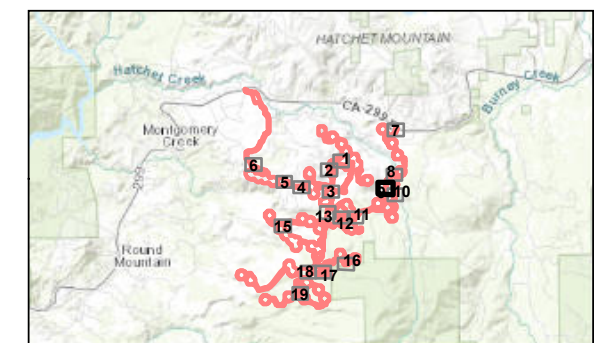


0 200 Feet
(At original document size of 11x17)
1:2,400

Notes

- 1. Coordinate System: NAD 1983 UTM Zone 10N
- 2. Background: ESRI World Imagery

Printed 1/29/2024



Project Location
Shasta County
California

Prepared by JED on 2024-18-01
Technical Review by KH on 2024-18-01

Client/Project
ConnectGen
Fountain Wind Energy

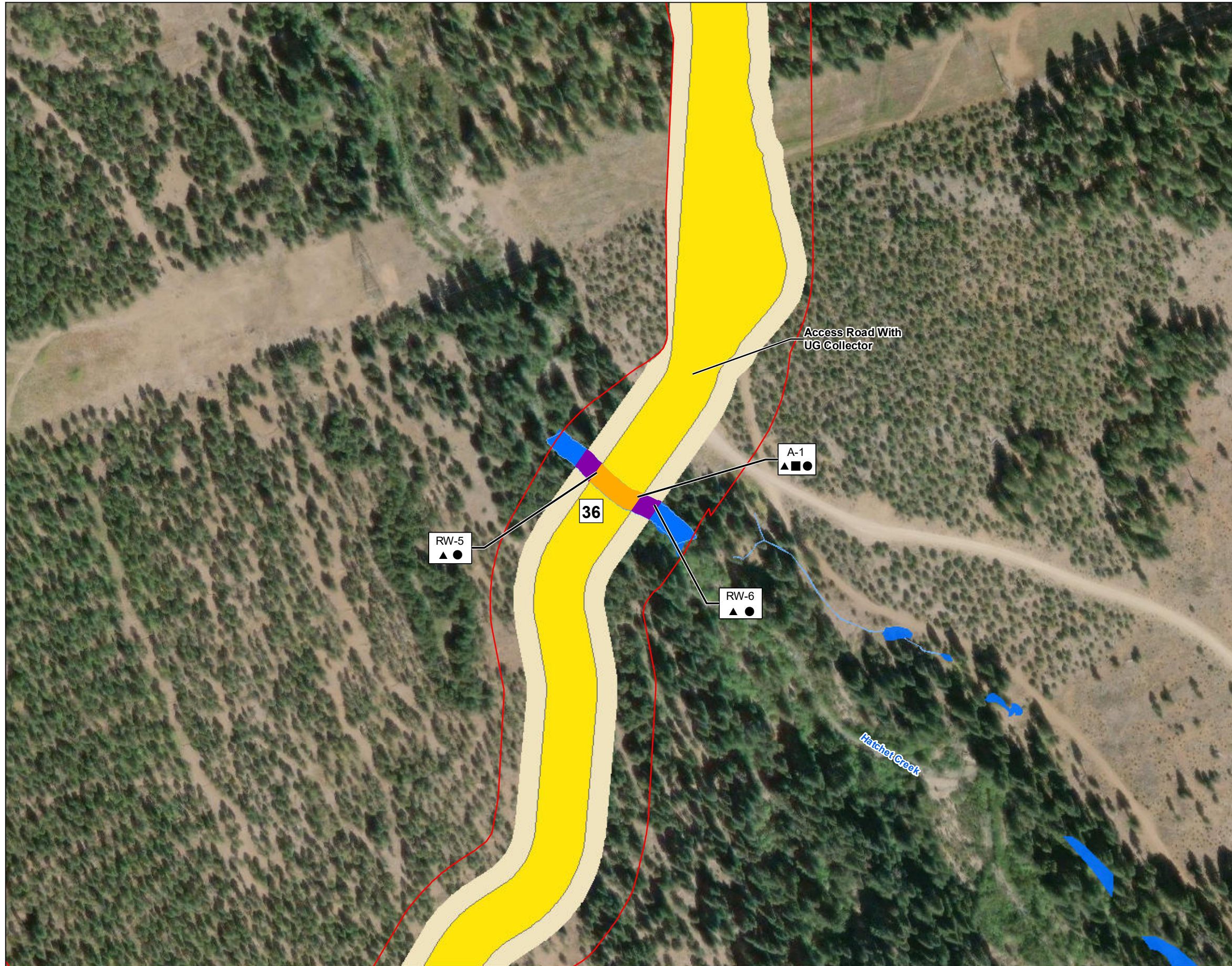
203723159

Figure No.

1

Title
Project Components and Potential Impacts to Waters

V:\1950\active\Task_Owner and other Non-BC1956_Jobs\185703743003_data\gis_cad\gis\mxd\2024\WETLANDS_02b_ProjectComponents_and_AquaticImpacts_Jurisdictional.mxd Revised: 2024-01-29 By: khoward



Legend

Study Area: 2,856 acres

Crossing Location Identifier

Resource Impact Type

Permanent Impact (fill)

Permanent Vegetation Clearing

Temporary Disturbance (no fill)

No Impact

Project Components and Disturbance Areas

Turbine (with structure number)

Met Towers

Operations and Maintenance Facility

Laydown Yard/Staging Area

Batch Plants

Substation

Permanent Disturbance

Temporary Disturbance

Jurisdictional Agency

U.S. Army Corps of Engineers

Regional Water Quality Control Board

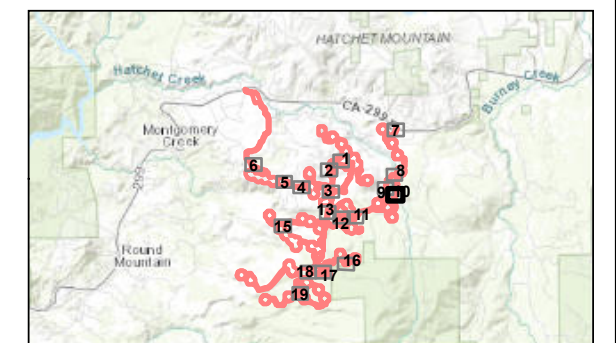
California Department of Fish and Wildlife



0 200 Feet
(At original document size of 11x17)
1:2,400

Notes
1. Coordinate System: NAD 1983 UTM Zone 10N
2. Background: ESRI World Imagery

Printed 1/29/2024



Project Location
Shasta County
California

Prepared by JED on 2024-18-01
Technical Review by KH on 2024-18-01

Client/Project
ConnectGen
Fountain Wind Energy

203723159

Figure No.

1

Title
Project Components and Potential Impacts to Waters

V:\1950\active\Task Owner and other Non-BC1956 Jobs\18570374303_data\gis_cad\gis\mxd\2024\WETLANDS_02b_ProjectComponents_and_AquaticImpacts_Jurisdictional.mxd Revised: 2024-01-29 By: khoward



Legend

Study Area: 2,856 acres

Crossing Location Identifier

Resource Impact Type

Permanent Impact (fill)

Permanent Vegetation Clearing

Temporary Disturbance (no fill)

No Impact

Project Components and Disturbance Areas

Turbine (with structure number)

Met Towers

Operations and Maintenance Facility

Laydown Yard/Staging Area

Batch Plants

Substation

Permanent Disturbance

Temporary Disturbance

Jurisdictional Agency

U.S. Army Corps of Engineers

Regional Water Quality Control Board

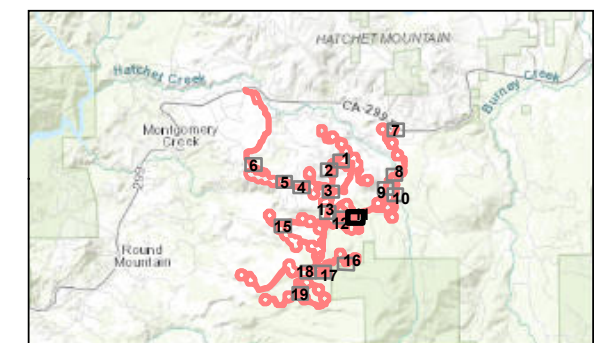
California Department of Fish and Wildlife



0 200 Feet
(At original document size of 11x17)
1:2,400

Notes
1. Coordinate System: NAD 1983 UTM Zone 10N
2. Background: ESRI World Imagery

Printed 1/29/2024



Project Location
Shasta County
California
Prepared by JED on 2024-18-01
Technical Review by KH on 2024-18-01

Client/Project
ConnectGen
Fountain Wind Energy
203723159

Figure No.

1

Title

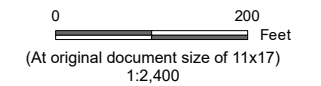
Project Components and Potential Impacts to Waters

V:\1950\active\Task Owner and other Non-BC1956 Jobs\185703743003_data\gis_cad\gis\mxd\2024\WETLANDS_02b_ProjectComponents_and_AquaticImpacts_jurisdictional.mxd Revised: 2024-01-29 By: khoward



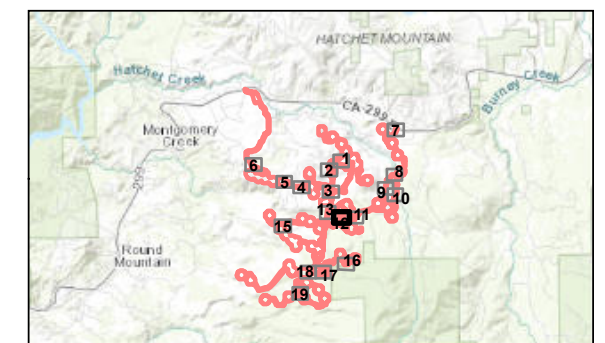
Legend

- Study Area: 2,856 acres
- # Crossing Location Identifier
- Resource Impact Type**
- Permanent Impact (fill)
- Permanent Vegetation Clearing
- Temporary Disturbance (no fill)
- No Impact
- Project Components and Disturbance Areas**
- Turbine (with structure number)
- Met Towers
- ▭ Operations and Maintenance Facility
- ▨ Laydown Yard/Staging Area
- ▩ Batch Plants
- ▧ Substation
- Permanent Disturbance
- Temporary Disturbance
- Jurisdictional Agency**
- U.S. Army Corps of Engineers
- Regional Water Quality Control Board
- California Department of Fish and Wildlife



- Notes**
1. Coordinate System: NAD 1983 UTM Zone 10N
 2. Background: ESRI World Imagery

Printed 1/29/2024



Project Location
Shasta County
California

Prepared by JED on 2024-18-01
Technical Review by KH on 2024-18-01

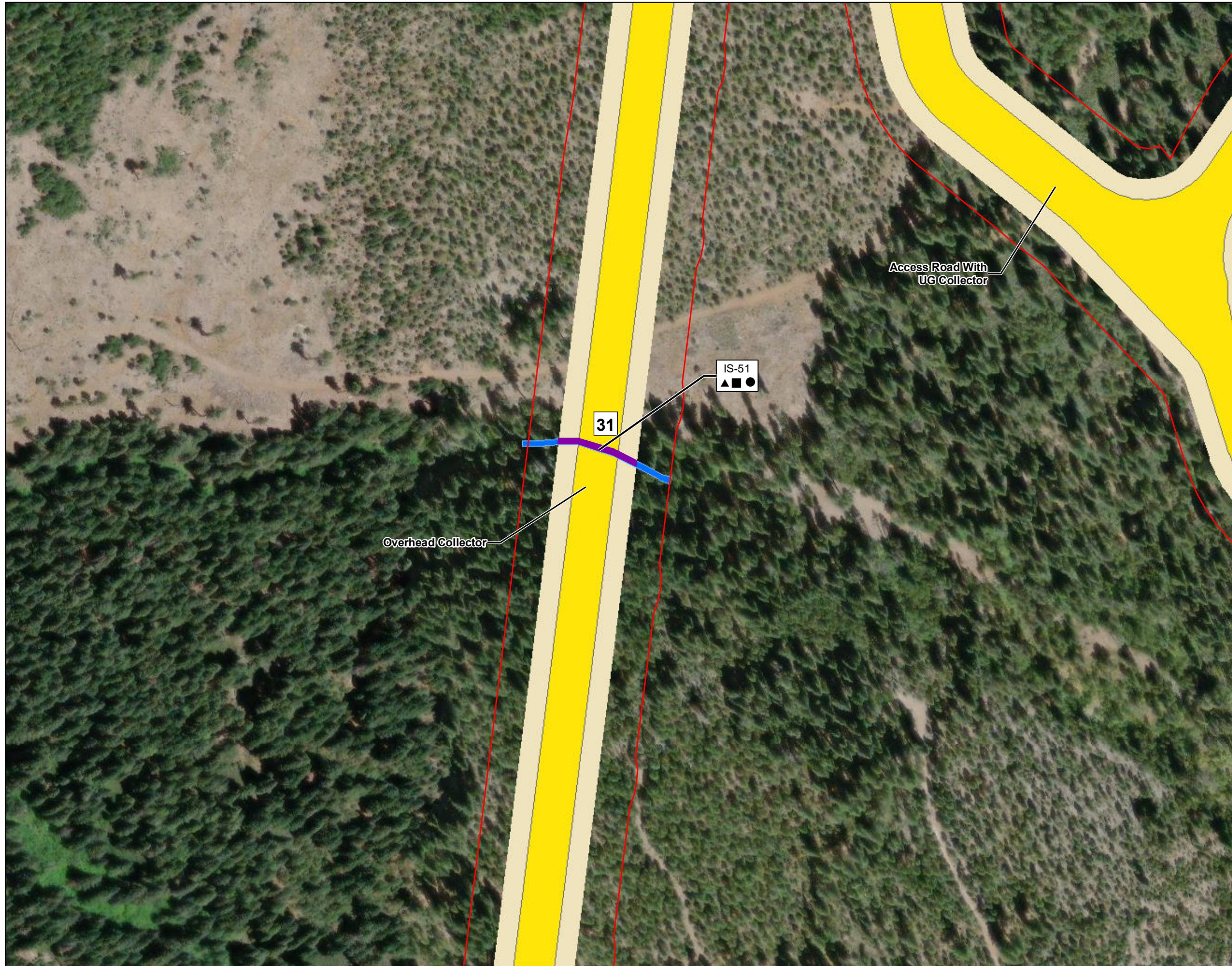
Client/Project
ConnectGen
Fountain Wind Energy

203723159

Figure No.
1

Title
Project Components and Potential Impacts to Waters

V:\1950\active\Task_Owner and other Non-BC1956_Jobs\185703743003_data\gis_cad\gis\mxd\2024\NWE_TLANDS_02b_ProjectComponents_and_AquaticImpacts_Jurisdictional.mxd Revised: 2024-01-29 By: khoward



Legend

Study Area: 2,856 acres

Crossing Location Identifier

Resource Impact Type

Permanent Impact (fill)

Permanent Vegetation Clearing

Temporary Disturbance (no fill)

No Impact

Project Components and Disturbance Areas

Turbine (with structure number)

Met Towers

Operations and Maintenance Facility

Laydown Yard/Staging Area

Batch Plants

Substation

Permanent Disturbance

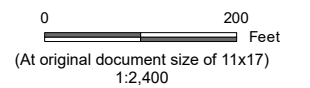
Temporary Disturbance

Jurisdictional Agency

U.S. Army Corps of Engineers

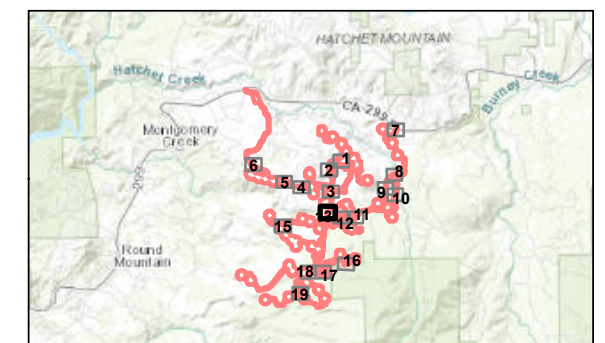
Regional Water Quality Control Board

California Department of Fish and Wildlife



- Notes**
- Coordinate System: NAD 1983 UTM Zone 10N
 - Background: ESRI World Imagery

Printed 1/29/2024



Project Location
Shasta County
California

Prepared by JED on 2024-18-01
Technical Review by KH on 2024-18-01

Client/Project
ConnectGen
Fountain Wind Energy

203723159

Figure No.

1

Title

Project Components and Potential Impacts to Waters

V:\1950\active\Task_Owner and other Non-BC1956_Jobs\185703743003_data\gis_cad\gis\mxd\2024\NWE_TLANS_02b_ProjectComponents_and_AquaticImpacts_Jurisdictional.mxd Revised: 2024-01-29 By: khoward



Legend

Study Area: 2,856 acres

Crossing Location Identifier

Resource Impact Type

Permanent Impact (fill)

Permanent Vegetation Clearing

Temporary Disturbance (no fill)

No Impact

Project Components and Disturbance Areas

Turbine (with structure number)

Met Towers

Operations and Maintenance Facility

Laydown Yard/Staging Area

Batch Plants

Substation

Permanent Disturbance

Temporary Disturbance

Jurisdictional Agency

U.S. Army Corps of Engineers

Regional Water Quality Control Board

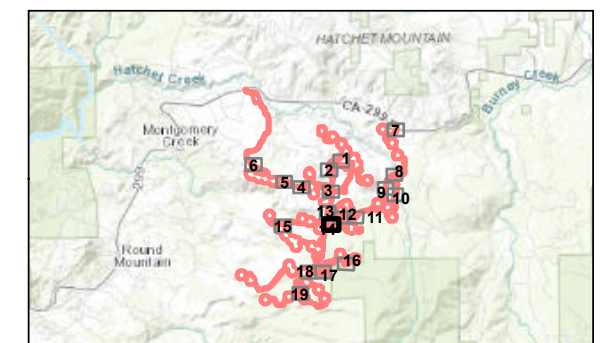
California Department of Fish and Wildlife



0 200 Feet
(At original document size of 11x17)
1:2,400

Notes
1. Coordinate System: NAD 1983 UTM Zone 10N
2. Background: ESRI World Imagery

Printed 1/29/2024



Project Location
Shasta County
California

Prepared by JED on 2024-18-01
Technical Review by KH on 2024-18-01

Client/Project
ConnectGen
Fountain Wind Energy

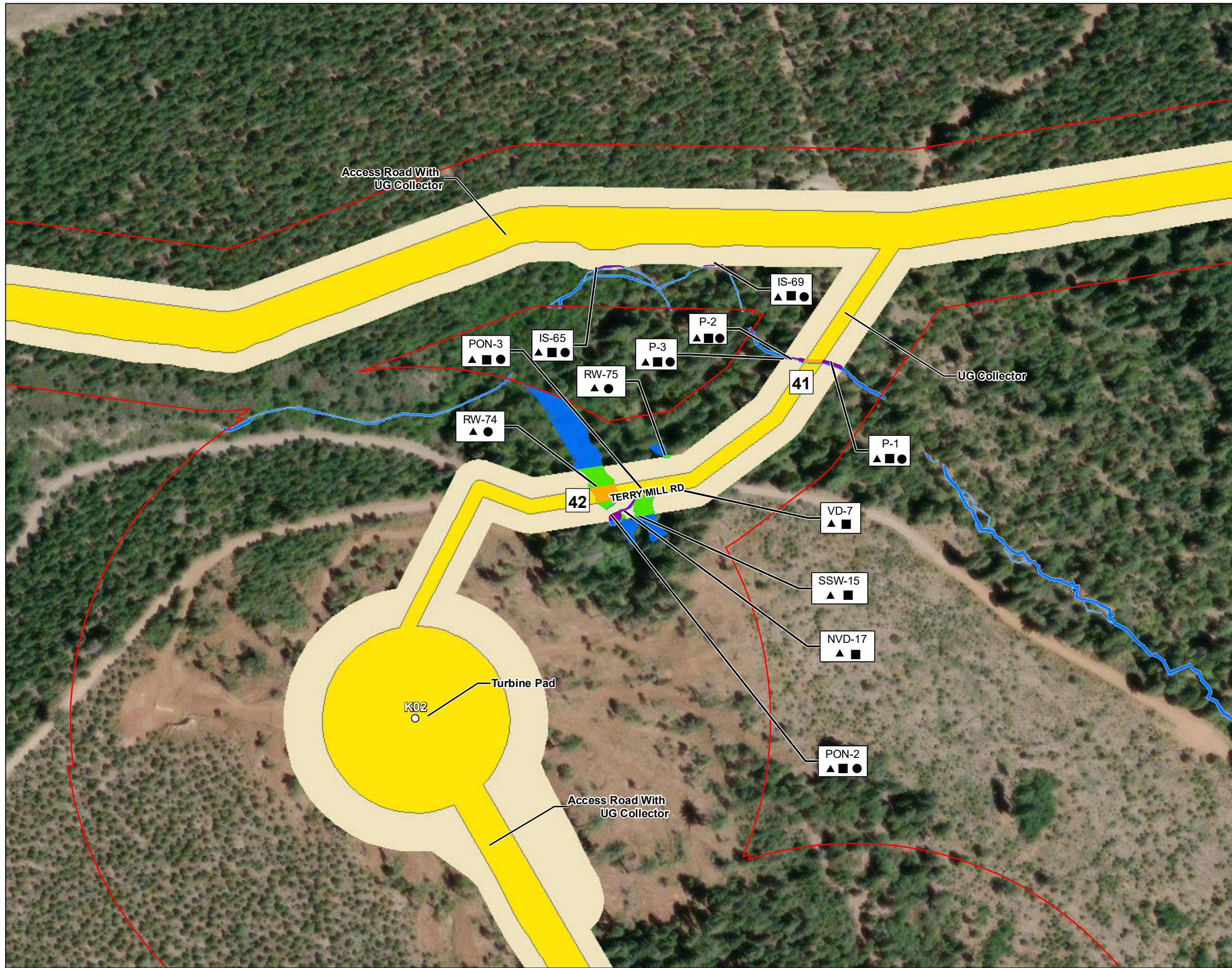
203723159

Figure No.

1

Title
Project Components and Potential Impacts to Waters

V:\1950\active\Task Owner and other Non-BC1956 Jobs\18570374303_data\gis_cad\img\mxd\2024\WETLANDS_02b_ProjectComponents_and_AquaticImpacts_Jurisdictional.mxd Revised: 2024-01-29 By: khoward



Legend

Study Area: 2,856 acres

Crossing Location Identifier

Resource Impact Type

Permanent Impact (fill)

Permanent Vegetation Clearing

Temporary Disturbance (no fill)

No Impact

Project Components and Disturbance Areas

Turbine (with structure number)

Met Towers

Operations and Maintenance Facility

Laydown Yard/Staging Area

Batch Plants

Substation

Permanent Disturbance

Temporary Disturbance

Jurisdictional Agency

▲ U.S. Army Corps of Engineers

■ Regional Water Quality Control Board

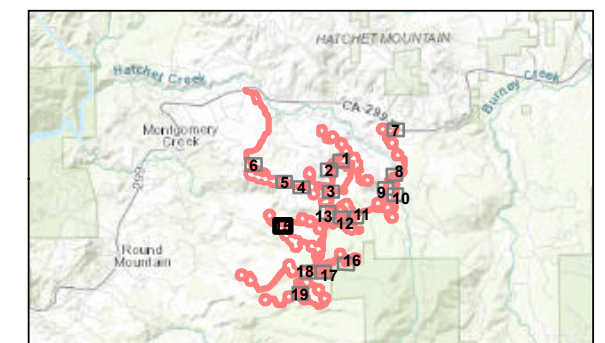
● California Department of Fish and Wildlife



0 200 Feet
(At original document size of 11x17)
1:2,400

Notes
1. Coordinate System: NAD 1983 UTM Zone 10N
2. Background: ESRI World Imagery

Printed 1/29/2024



Project Location
Shasta County
California

Prepared by JED on 2024-18-01
Technical Review by KH on 2024-18-01

Client/Project
ConnectGen
Fountain Wind Energy

203723159

Figure No.

1

Title

Project Components and Potential Impacts to Waters

V:\1950\active\Task_Owner and other Non-BC1956_Jobs\185703743003_data\gis_cad\gis\mxd\2024\WETLANDS_02b_ProjectComponents_and_AquaticImpacts_Jurisdictional.mxd Revised: 2024-01-29 By: khoward



Legend

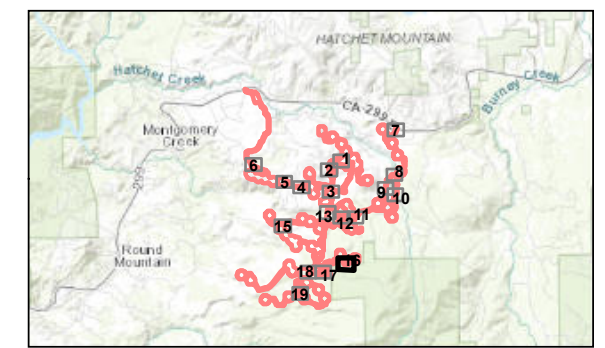
- Study Area: 2,856 acres
- # Crossing Location Identifier
- Resource Impact Type**
- Permanent Impact (fill)
- Permanent Vegetation Clearing
- Temporary Disturbance (no fill)
- No Impact
- Project Components and Disturbance Areas**
- Turbine (with structure number)
- Met Towers
- Operations and Maintenance Facility
- ▨ Laydown Yard/Staging Area
- ▩ Batch Plants
- ▤ Substation
- Permanent Disturbance
- Temporary Disturbance
- Jurisdictional Agency**
- U.S. Army Corps of Engineers
- Regional Water Quality Control Board
- California Department of Fish and Wildlife



0 200 Feet
(At original document size of 11x17)
1:2,400

Notes
1. Coordinate System: NAD 1983 UTM Zone 10N
2. Background: ESRI World Imagery

Printed 1/29/2024



Project Location
Shasta County
California
Prepared by JED on 2024-18-01
Technical Review by KH on 2024-18-01

Client/Project
ConnectGen
Fountain Wind Energy
203723159

Figure No.
1

Title
Project Components and Potential Impacts to Waters

V:\1950\active\Task_Owner_and_other_Non-BC1956_Jobs\18570374303_data\gis_cad\fig\mxd\2024\WETLANDS_02b_ProjectComponents_and_AquaticImpacts_Jurisdictional.mxd Revised: 2024-01-29 By: khoward



Legend

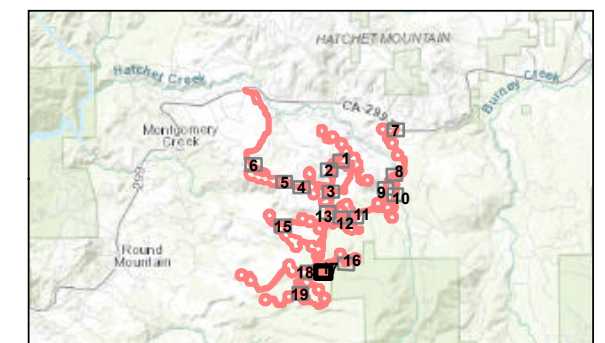
- Study Area: 2,856 acres
- # Crossing Location Identifier
- Resource Impact Type**
- Permanent Impact (fill)
- Permanent Vegetation Clearing
- Temporary Disturbance (no fill)
- No Impact
- Project Components and Disturbance Areas**
- Turbine (with structure number)
- Met Towers
- Operations and Maintenance Facility
- Laydown Yard/Staging Area
- Batch Plants
- Substation
- Permanent Disturbance
- Temporary Disturbance
- Jurisdictional Agency**
- U.S. Army Corps of Engineers
- Regional Water Quality Control Board
- California Department of Fish and Wildlife



0 200 Feet
(At original document size of 11x17)
1:2,400

Notes
1. Coordinate System: NAD 1983 UTM Zone 10N
2. Background: ESRI World Imagery

Printed 1/29/2024



Project Location
Shasta County
California

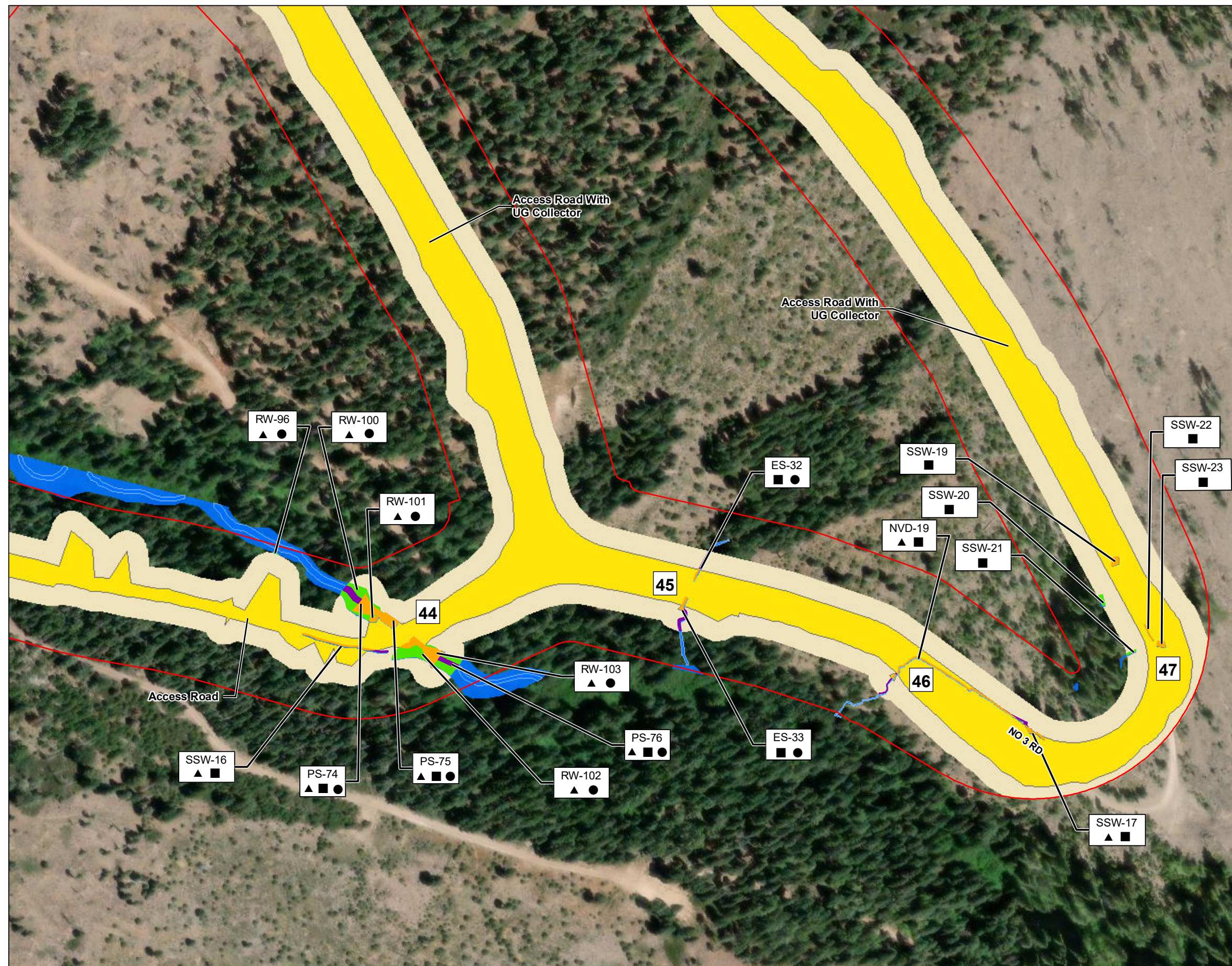
Prepared by JED on 2024-18-01
Technical Review by KH on 2024-18-01

Client/Project
ConnectGen
Fountain Wind Energy

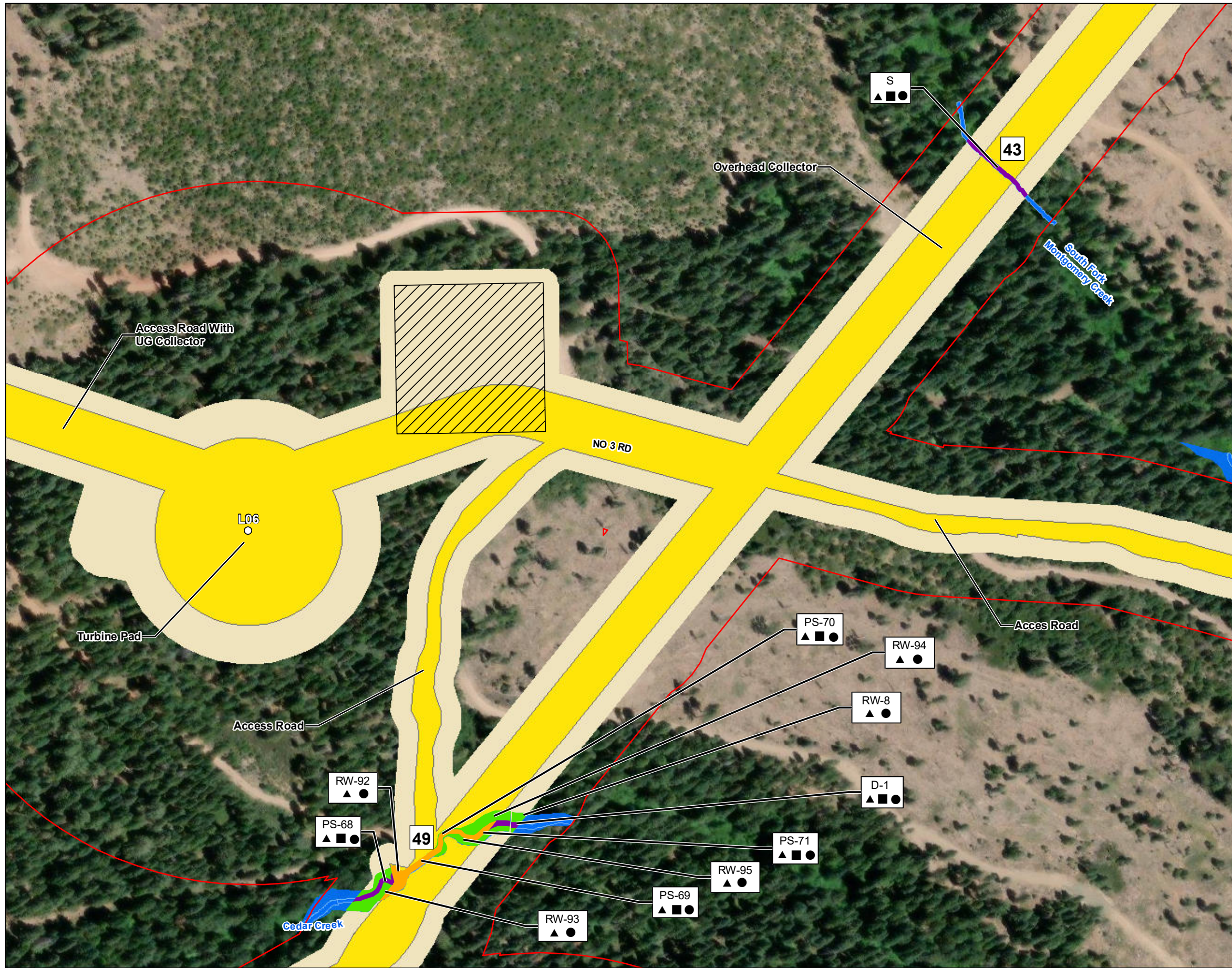
203723159

Figure No.
1

Title
Project Components and Potential Impacts to Waters



V:\1950\active\Task Owner and other Non-BC1956 Jobs\185703743003_data\gis_cad\gis\mxd\2024\NWE\LANDS_02b_ProjectComponents_and_AquaticImpacts_jurisdictional.mxd Revised: 2024-01-29 By: khoward



Legend

Study Area: 2,856 acres

Crossing Location Identifier

Resource Impact Type

Permanent Impact (fill)

Permanent Vegetation Clearing

Temporary Disturbance (no fill)

No Impact

Project Components and Disturbance Areas

Turbine (with structure number)

Met Towers

Operations and Maintenance Facility

Laydown Yard/Staging Area

Batch Plants

Substation

Permanent Disturbance

Temporary Disturbance

Jurisdictional Agency

U.S. Army Corps of Engineers

Regional Water Quality Control Board

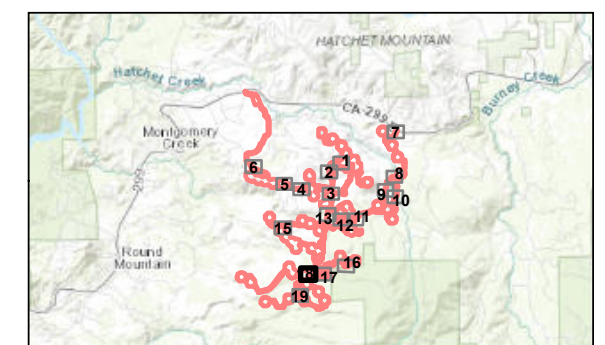
California Department of Fish and Wildlife



0 200 Feet
(At original document size of 11x17)
1:2,400

Notes
1. Coordinate System: NAD 1983 UTM Zone 10N
2. Background: ESRI World Imagery

Printed 1/29/2024



Project Location
Shasta County
California

Prepared by JED on 2024-18-01
Technical Review by KH on 2024-18-01

Client/Project
ConnectGen
Fountain Wind Energy

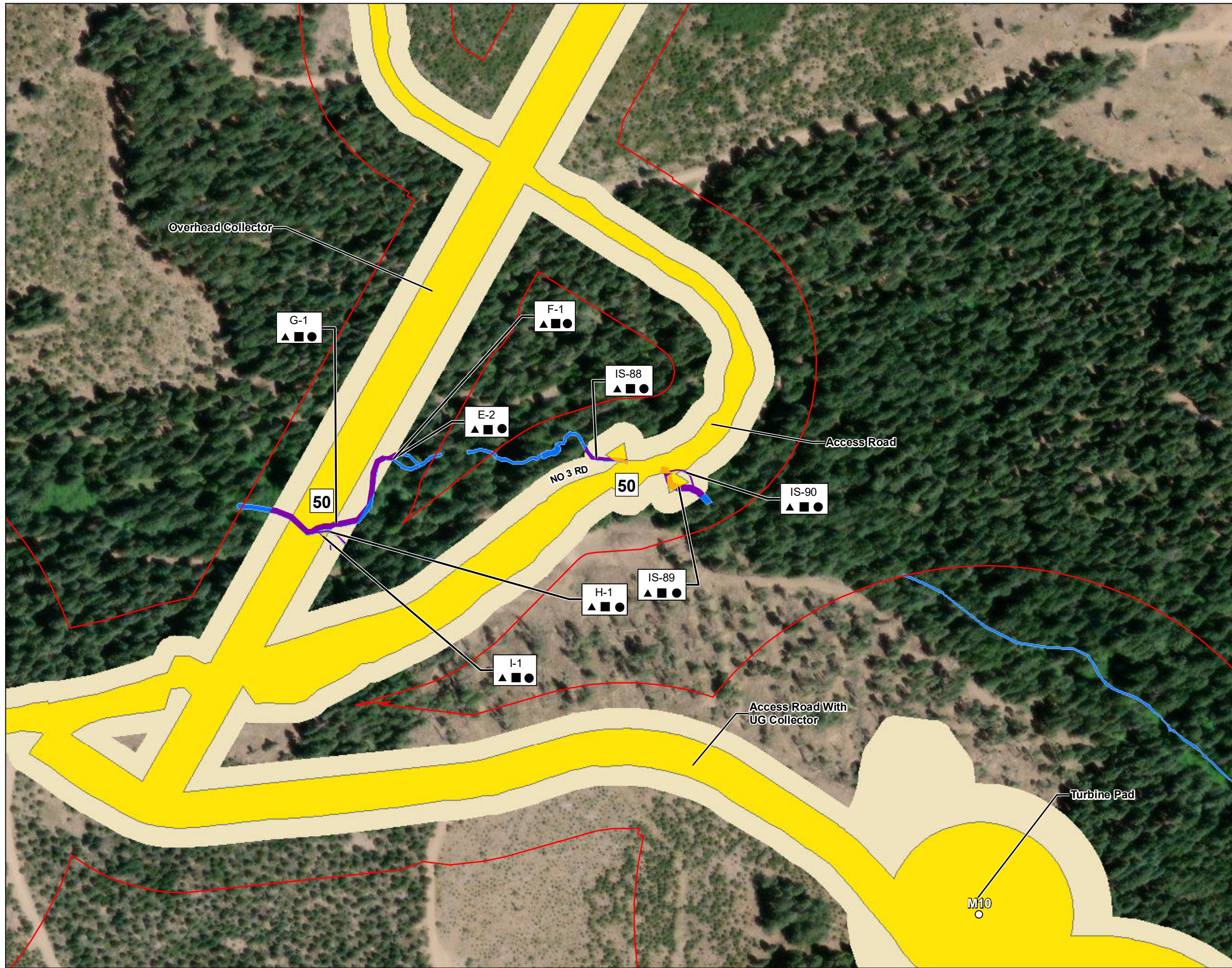
203723159

Figure No.

1

Title
Project Components and Potential Impacts to Waters

V:\1950\active\Task_Owner and other Non-BC1956_Jobs\185703743003_data\gis_cad\gis\mxd\2024\WETLANDS_02b_ProjectComponents_and_AquaticImpacts_Jurisdictional.mxd Revised: 2024-01-29 By: khoward



Legend

Study Area: 2,856 acres

Crossing Location Identifier

Resource Impact Type

Permanent Impact (fill)

Permanent Vegetation Clearing

Temporary Disturbance (no fill)

No Impact

Project Components and Disturbance Areas

Turbine (with structure number)

Met Towers

Operations and Maintenance Facility

Laydown Yard/Staging Area

Batch Plants

Substation

Permanent Disturbance

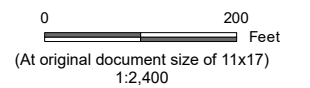
Temporary Disturbance

Jurisdictional Agency

▲ U.S. Army Corps of Engineers

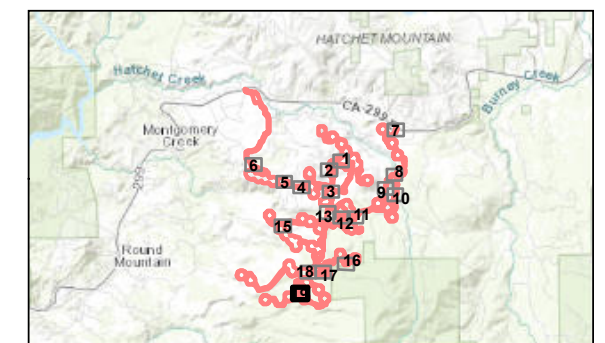
■ Regional Water Quality Control Board

● California Department of Fish and Wildlife



Notes
 1. Coordinate System: NAD 1983 UTM Zone 10N
 2. Background: ESRI World Imagery

Printed 1/29/2024



Project Location
 Shasta County
 California

Prepared by JED on 2024-18-01
 Technical Review by KH on 2024-18-01

Client/Project
 ConnectGen
 Fountain Wind Energy

203723159

Figure No.
 1

Title
 Project Components and Potential Impacts to Waters