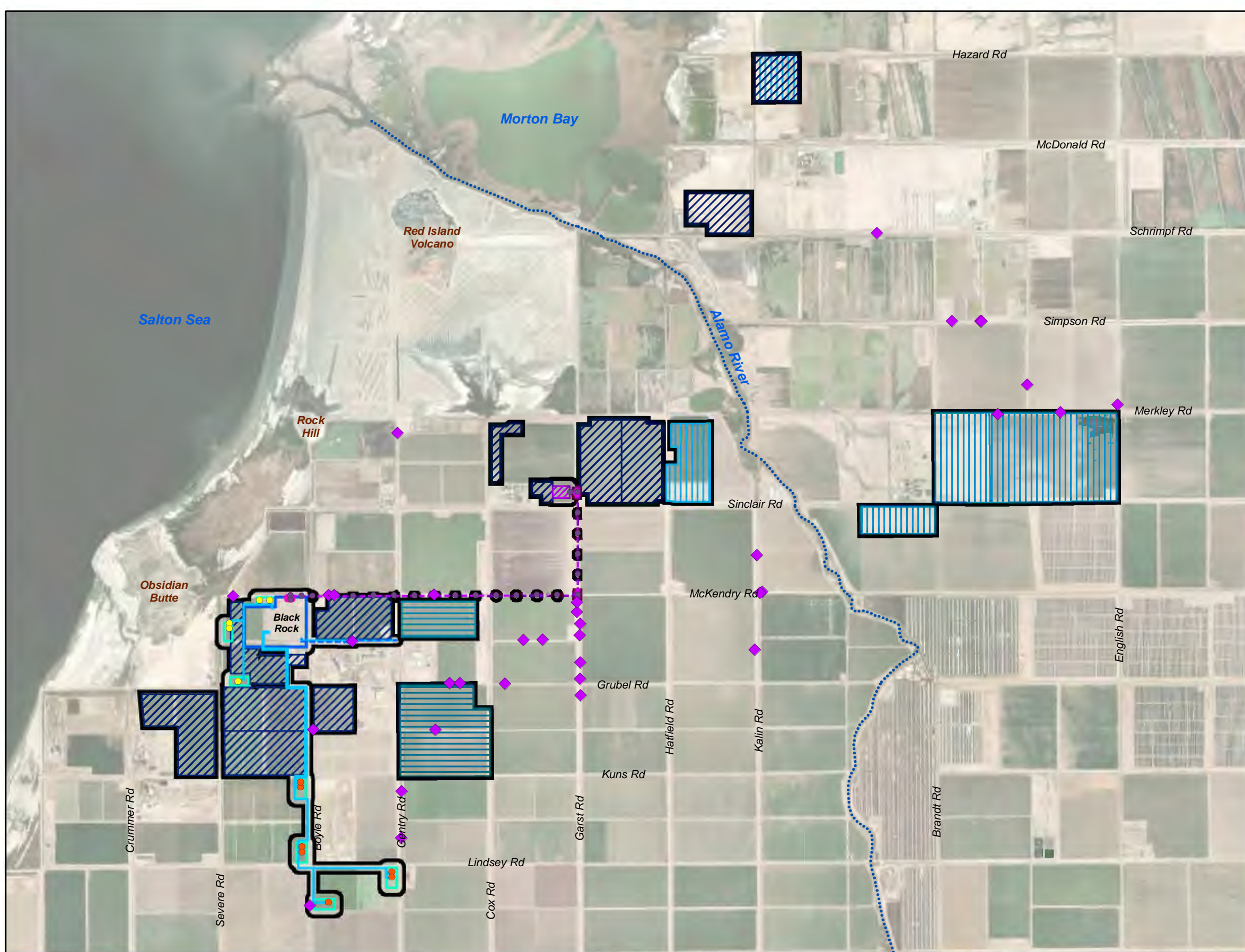
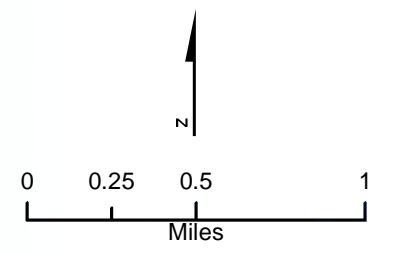


<b>DOCKETED</b>	
<b>Docket Number:</b>	23-AFC-03
<b>Project Title:</b>	Black Rock Geothermal Project (BRGP)
<b>TN #:</b>	253502
<b>Document Title:</b>	Appendix A 2023 Burrowing Owl Breeding Season Proposed Methods, Figure 2
<b>Description:</b>	N/A
<b>Filer:</b>	Ngoc Tran
<b>Organization:</b>	California Energy Commission
<b>Submitter Role:</b>	Commission Staff
<b>Submission Date:</b>	12/4/2023 1:34:08 PM
<b>Docketed Date:</b>	12/4/2023



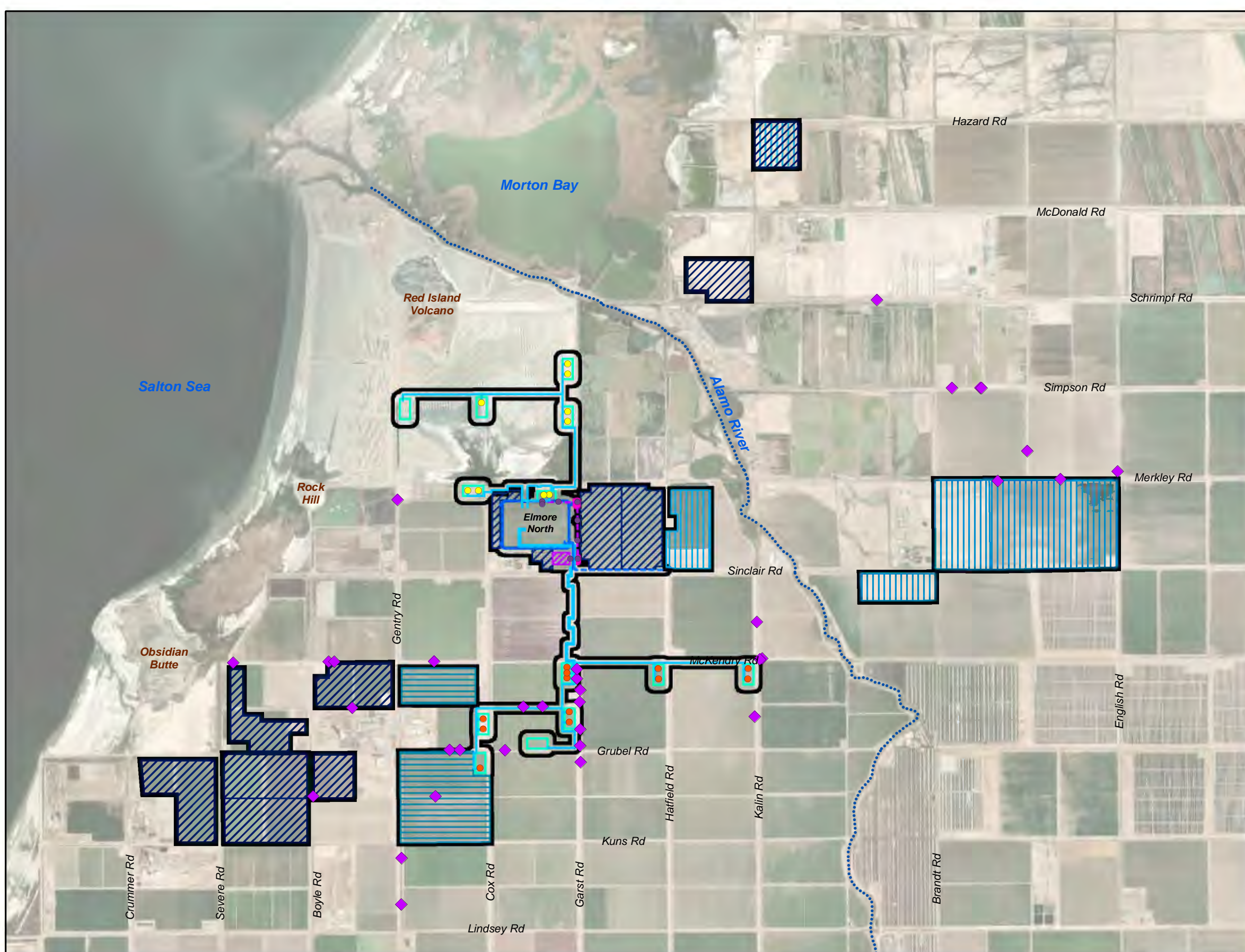
- Legend**
- ◆ Burrowing Owl Incidental Point
  - ▭ Biological Study Area
  - ▭ Plant
  - ▭ Well Pad
  - Injection Well
  - Production Well
  - Pipeline
  - - - Water Supply Pipeline
  - Gen-Tie Line Pole
  - - - Gen-Tie Line
  - Pull Site
  - ▨ Switching Station
  - ▨ Borrow Pit
  - ▨ Construction Camp
  - ▨ Construction Laydown and Parking Areas

Note:  
All incidental observations of burrowing owls are included in this figure and were not clipped to BSA.



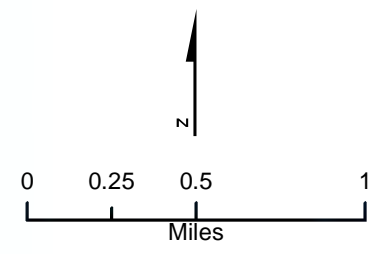
**Figure 2**  
**Burrowing Owl Observations**  
**Black Rock Geothermal Project**  
Imperial County, California





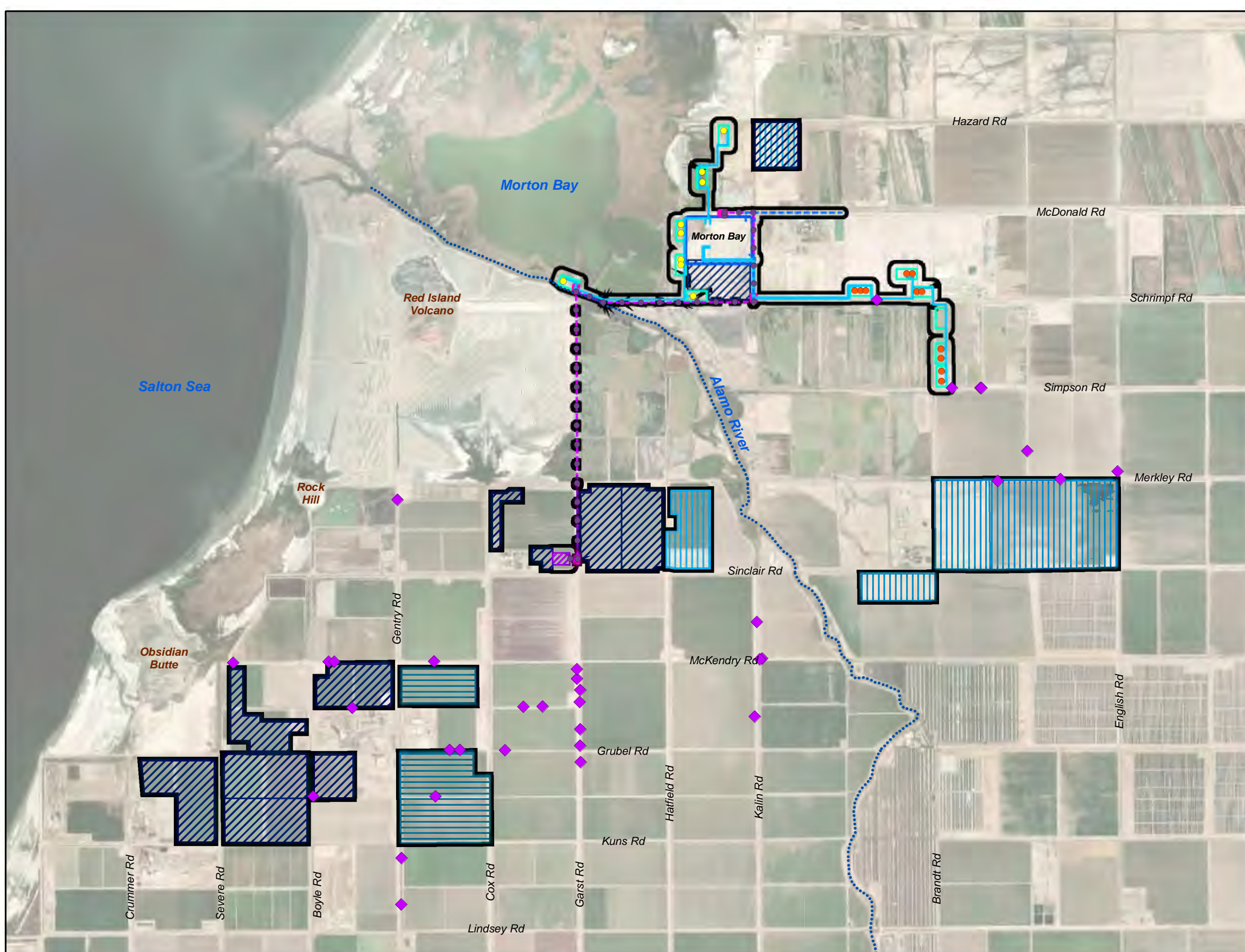
- Legend**
- ◆ Burrowing Owl Incidental Point
  - ▭ Biological Study Area
  - ▭ Plant
  - ▭ Well Pad
  - Injection Well
  - Production Well
  - Pipeline
  - - - Water Supply Pipeline
  - Gen-Tie Line Pole
  - - - Gen-Tie Line
  - Pull Site
  - ▨ Switching Station
  - ▨ Borrow Pit
  - ▨ Construction Camp
  - ▨ Construction Laydown and Parking Areas

Note:  
All incidental observations of burrowing owls are included in this figure and were not clipped to BSA.



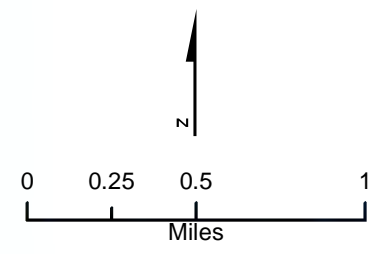
**Figure 2**  
**Burrowing Owl Observations**  
**Elmore North Geothermal Project**  
Imperial County, California





- Legend**
- ◆ Burrowing Owl Incidental Point
  - ▭ Biological Study Area
  - ▭ Plant
  - ▭ Well Pad
  - Injection Well
  - Production Well
  - Pipeline
  - - - Water Supply Pipeline
  - Gen-Tie Line Pole
  - - - Gen-Tie Line
  - ▭ Pull Site
  - ▭ Switching Station
  - ▭ Borrow Pit
  - ▭ Construction Camp
  - ▭ Construction Laydown and Parking Areas

Note:  
All incidental observations of burrowing owls are included in this figure and were not clipped to BSA.



**Figure 2**  
**Burrowing Owl Observations**  
**Morton Bay Geothermal Project**  
Imperial County, California