

DOCKETED

Docket Number:	23-AFC-01
Project Title:	Morton Bay Geothermal Project (MBGP)
TN #:	253492
Document Title:	Figures 5, 6a, 6b, 7a, 7b, 8a, 8b
Description:	Maps of burrowing owl survey results
Filer:	Ngoc Tran
Organization:	California Energy Commission
Submitter Role:	Commission Staff
Submission Date:	12/4/2023 12:06:32 PM
Docketed Date:	12/4/2023



- Legend**
- Plant
 - Merged Biological Study Area (BSA)
 - 200-meter BSA Buffer
 - Burrowing Owl at Burrow
 - ▲ Incidental Burrowing Owl Observation

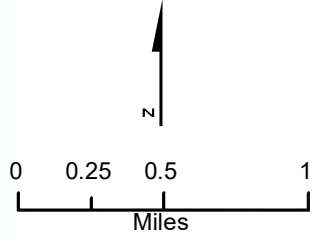
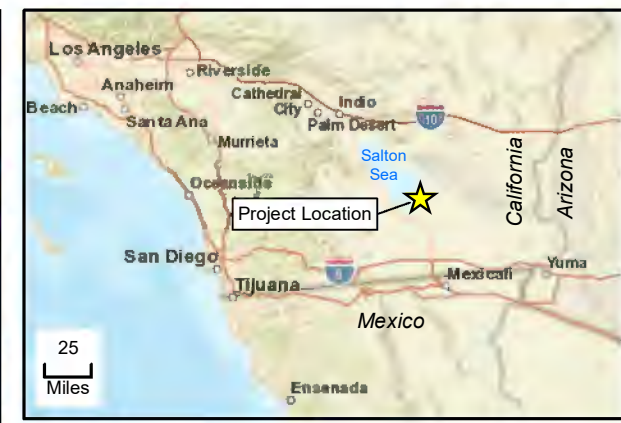
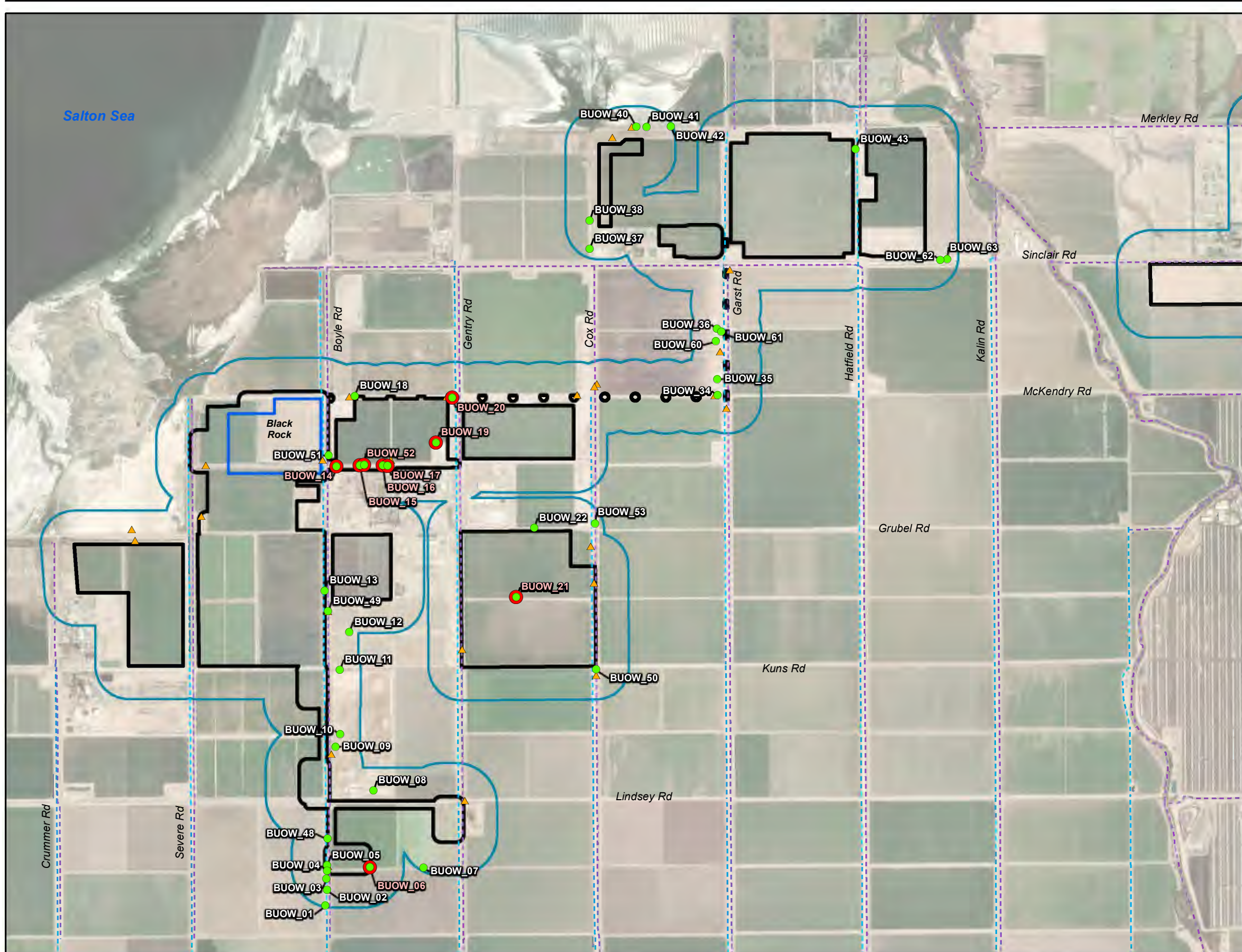


Figure 5
Overview of Burrowing Owl
Survey Results
 Imperial County, California



- Legend**
- Plant
 - Black Rock Geothermal Project Biological Study Area (BSA)
 - 200-meter BSA Buffer
 - Burrowing Owl at Burrow
 - Potentially Impacted Burrows
 - ▲ Incidental Burrowing Owl Observation
 - Imperial Irrigation District Canal
 - Imperial Irrigation District Drain

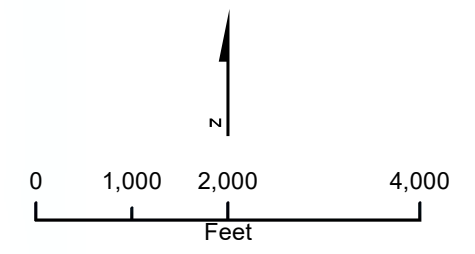
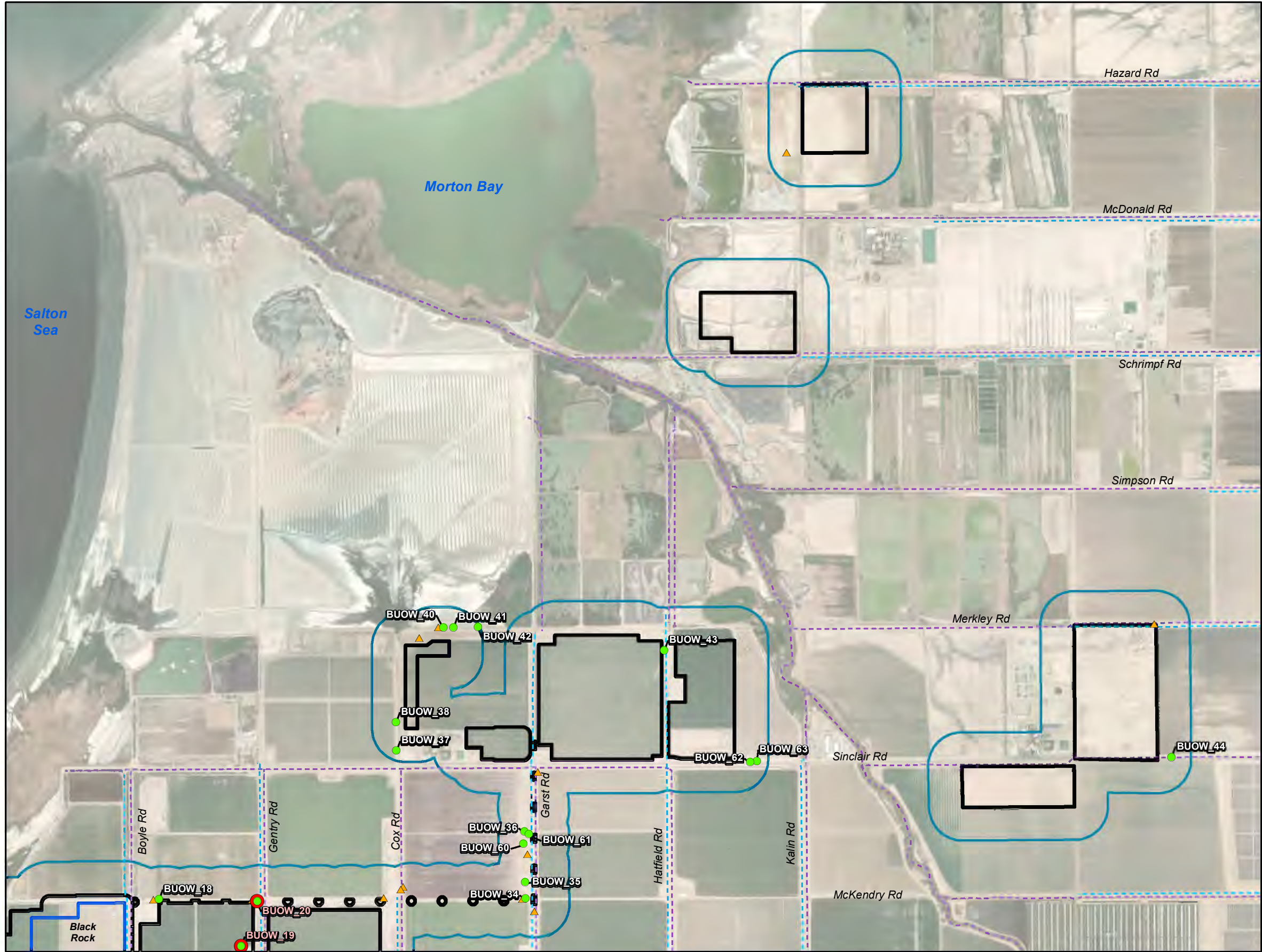


Figure 6a
Black Rock Geothermal Project
Burrowing Owl Survey Results
 Imperial County, California



- Legend**
- Plant
 - Black Rock Geothermal Project Biological Study Area (BSA)
 - 200-meter BSA Buffer
 - Burrowing Owl at Burrow
 - Potentially Impacted Burrows
 - ▲ Incidental Burrowing Owl Observation
 - Imperial Irrigation District Canal
 - Imperial Irrigation District Drain

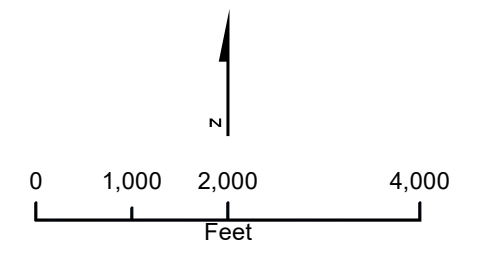
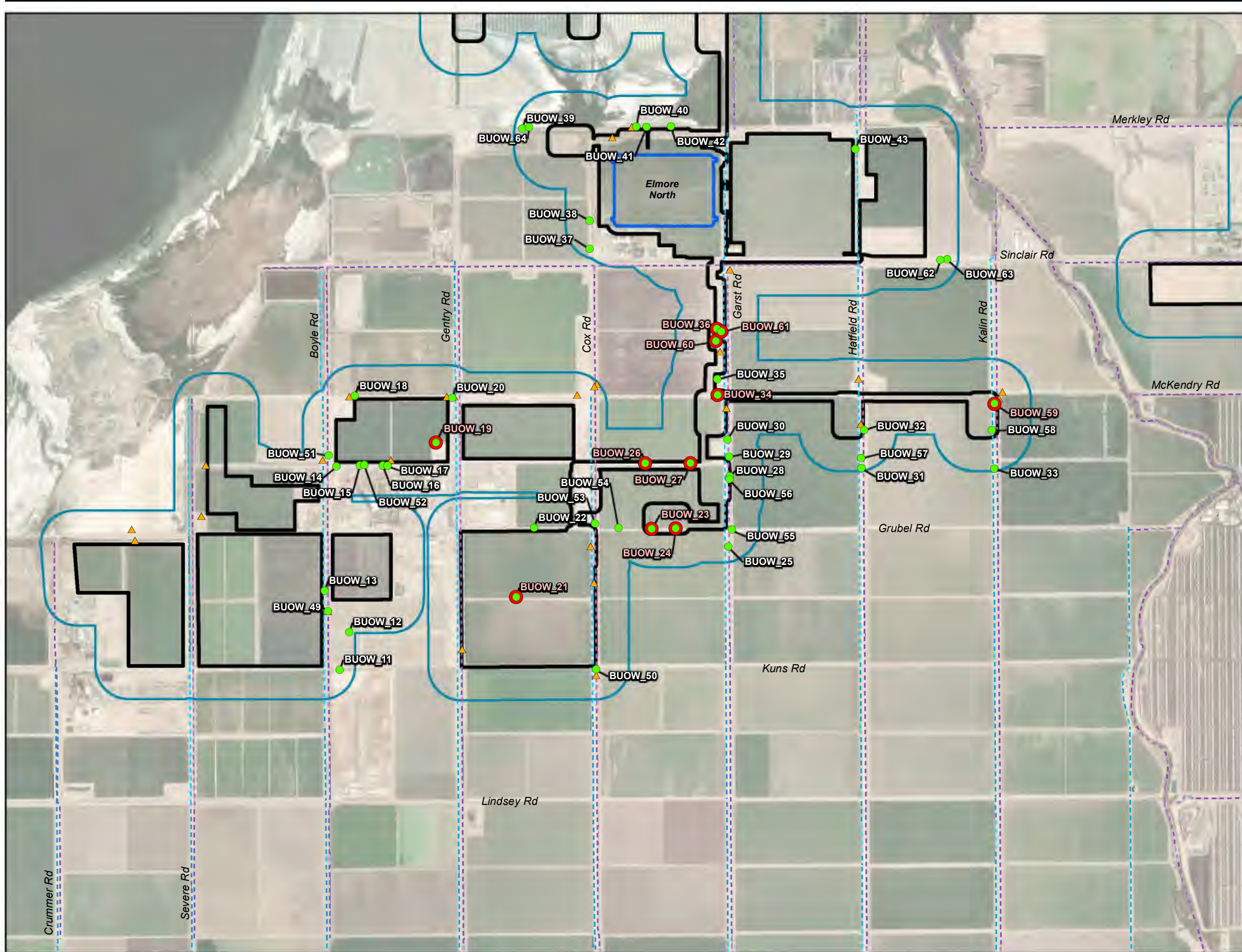


Figure 6b
Black Rock Geothermal Project
Burrowing Owl Survey Results
 Imperial County, California



- Legend**
- Plant
 - Elmore North Geothermal Project Biological Study Area (BSA)
 - 200-meter BSA Buffer
 - Burrowing Owl at Burrow
 - Potentially Impacted Burrows
 - ▲ Incidental Burrowing Owl Observation
 - Imperial Irrigation District Canal
 - Imperial Irrigation District Drain

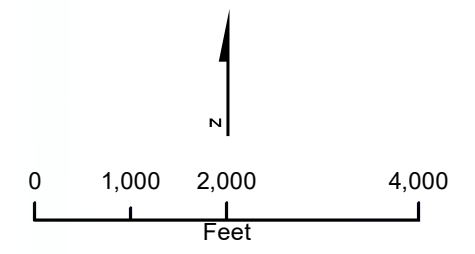
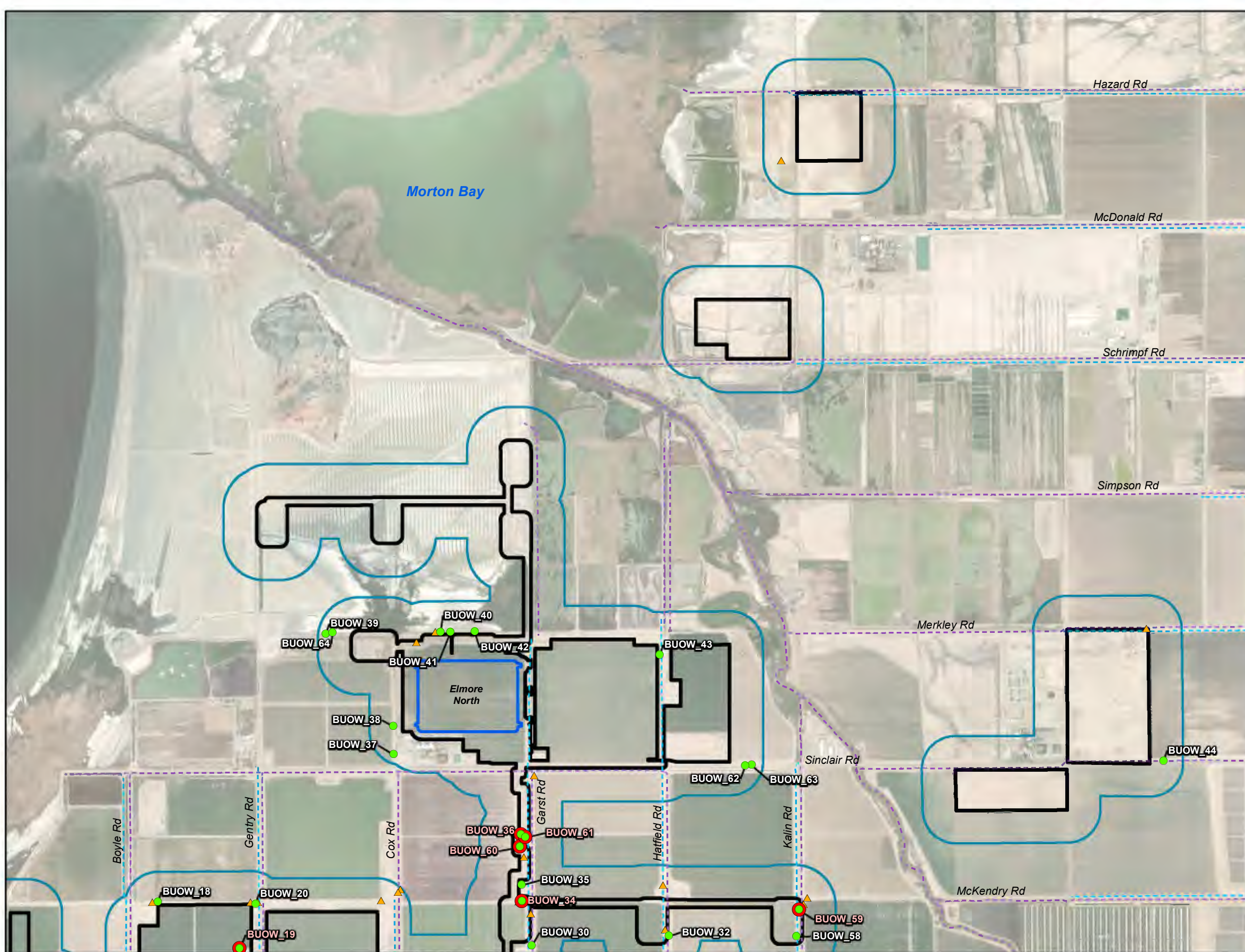


Figure 7a
Elmore North Geothermal Project
Burrowing Owl Survey Results
 Imperial County, California

\\dc1vs01\gisproj\BIBHE_Renewables\Imperial_Valley\MapFiles\Bio\BUOW\Figure_7_231018.mxd



- Legend**
- Plant
 - Elmore North Geothermal Project Biological Study Area (BSA)
 - 200-meter BSA Buffer
 - Burrowing Owl at Burrow
 - Potentially Impacted Burrows
 - ▲ Incidental Burrowing Owl Observation
 - Imperial Irrigation District Canal
 - Imperial Irrigation District Drain

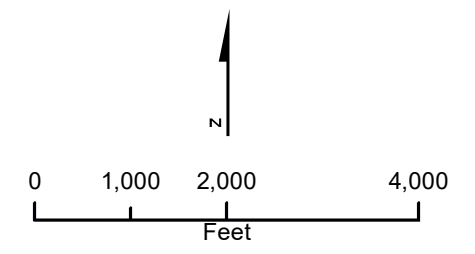
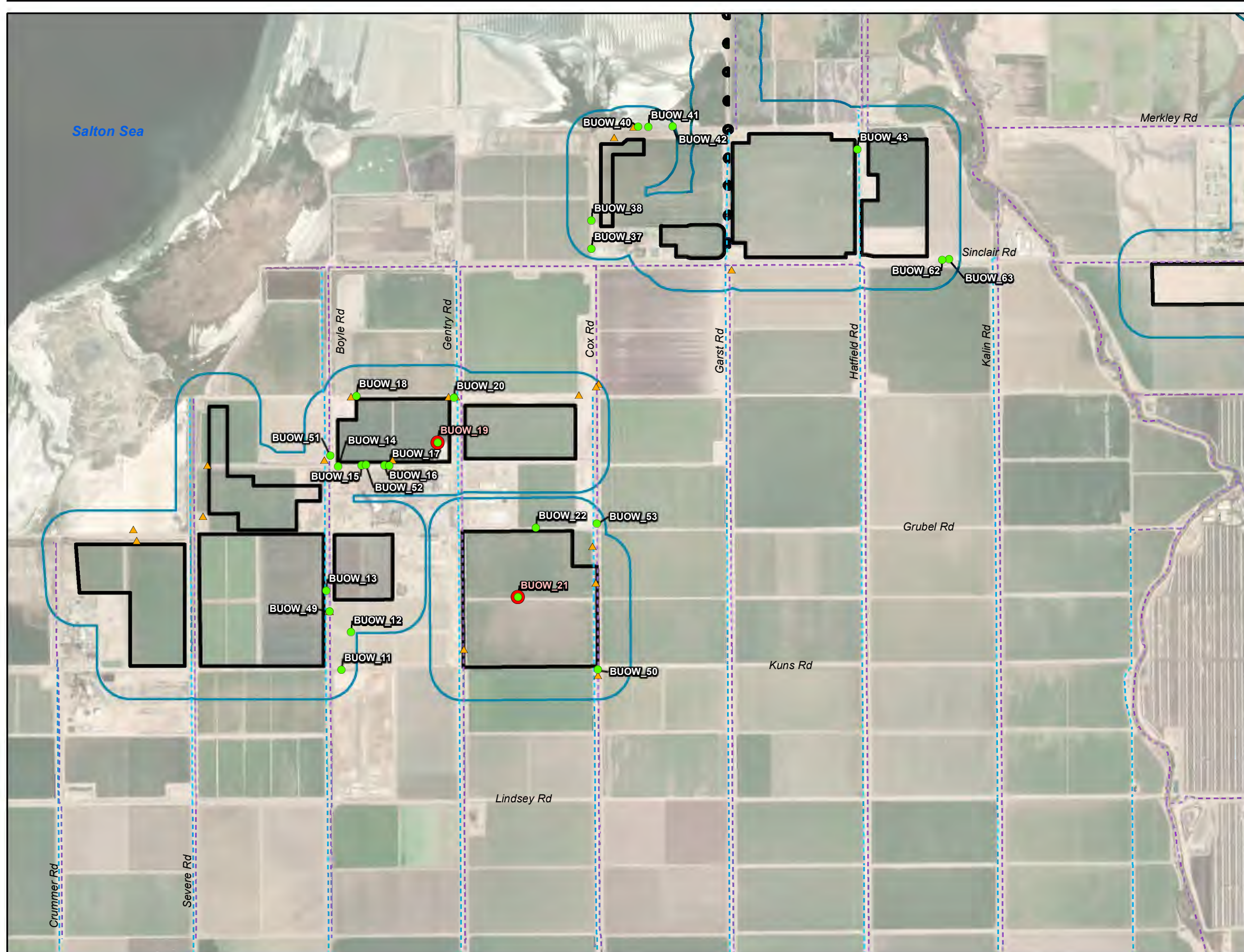


Figure 7b
Elmore North Geothermal Project
Burrowing Owl Survey Results
 Imperial County, California

\\dc1vs01\gisproj\BIBHE_Renewables\Imperial_Valley\MapFiles\Bio\BUOW\Figure_7_231018.mxd



- Legend**
- Plant
 - Morton Bay Geothermal Project Biological Study Area (BSA)
 - 200-meter BSA Buffer
 - Burrowing Owl at Burrow
 - Potentially Impacted Burrows
 - ▲ Incidental Burrowing Owl Observation
 - Imperial Irrigation District Canal
 - Imperial Irrigation District Drain

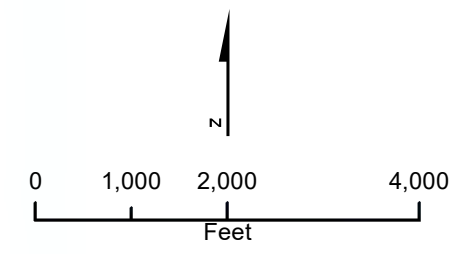
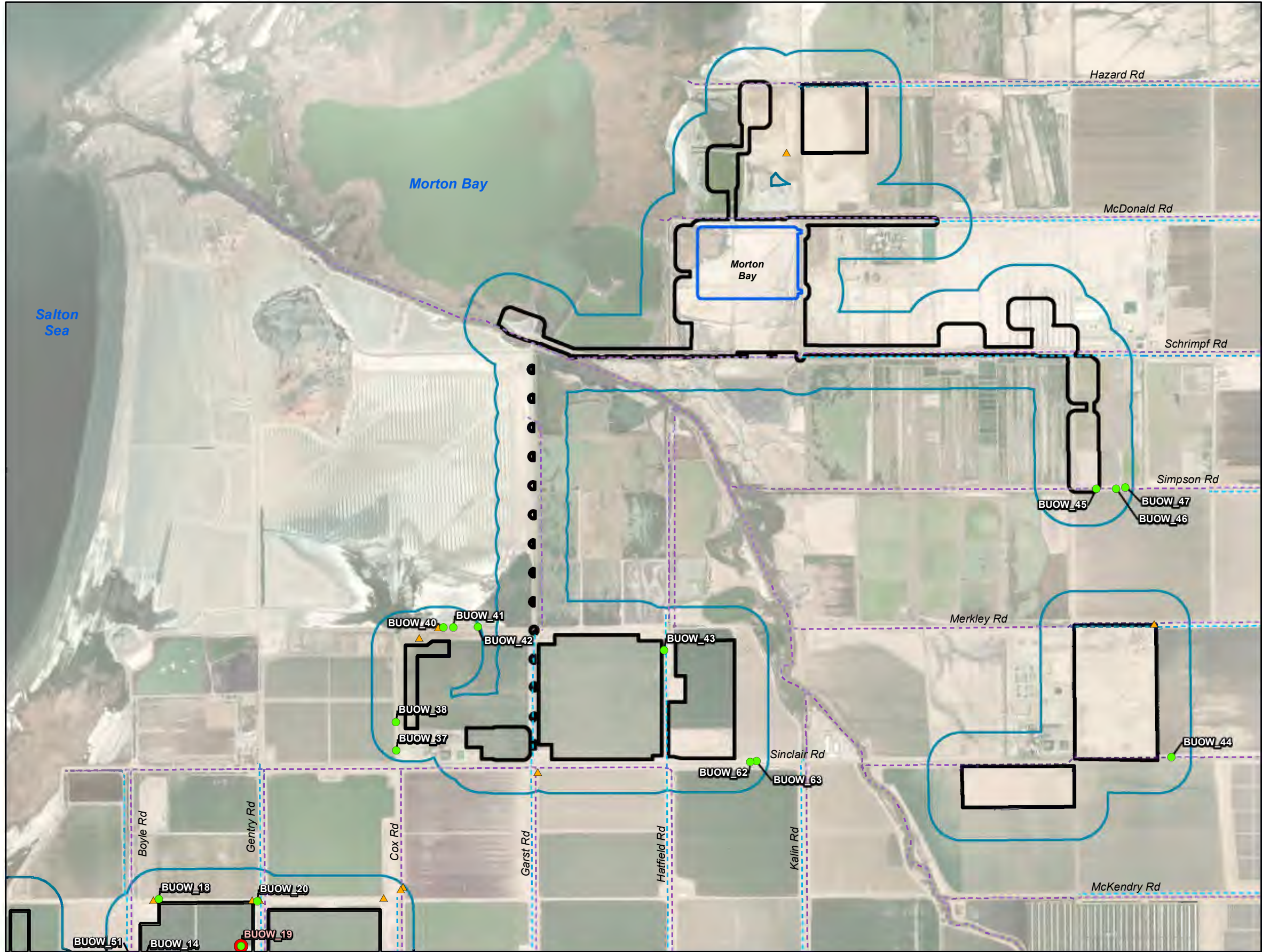


Figure 8a
Morton Bay Geothermal Project
Burrowing Owl Survey Results
 Imperial County, California



- Legend**
- Plant
 - Morton Bay Geothermal Project
 - Biological Study Area (BSA)
 - 200-meter BSA Buffer
 - Burrowing Owl at Burrow
 - Potentially Impacted Burrows
 - ▲ Incidental Burrowing Owl Observation
 - Imperial Irrigation District Canal
 - Imperial Irrigation District Drain

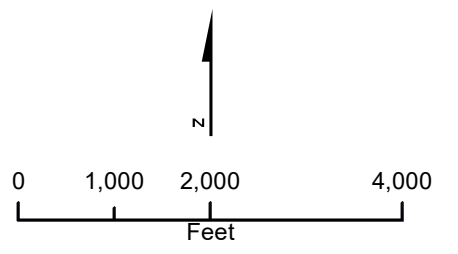


Figure 8b
Morton Bay Geothermal Project
Burrowing Owl Survey Results
 Imperial County, California

\\dc1vs01\gisproj\BIBHE_Renewables\Imperial_Valley\MapFiles\Bio\BUOW\Figure_8_231018.mxd