

<b>DOCKETED</b>	
<b>Docket Number:</b>	23-OPT-02
<b>Project Title:</b>	Darden Clean Energy Project
<b>TN #:</b>	253033-4
<b>Document Title:</b>	Appendix L Visual Simulations Methodology and Data Sheets_Volume 4_Darden Clean Energy
<b>Description:</b>	Volume 4 provides photo simulations of the Darden Clean Energy Project.
<b>Filer:</b>	Evelyn Langsdale
<b>Organization:</b>	Rincon Consultants
<b>Submitter Role:</b>	Applicant Consultant
<b>Submission Date:</b>	11/7/2023 4:13:56 PM
<b>Docketed Date:</b>	11/7/2023

# Appendix L - Volume 4

---

Federal Highway Administration Visual Impact Assessment Worksheets

Truescape Visual Simulations Methodology

Truescape TrueView Photo Simulations, October 2023





For on-screen display:  
Scale bar to be 4 inches wide  
Viewing distance 19.7 inches





For on-screen display:  
Scale bar to be 4 inches wide  
Viewing distance 19.7 inches





For on-screen display:  
Scale bar to be 4 inches wide  
Viewing distance 19.7 inches





Viewpoint 6 - W Cerini Ave - Residences, Looking South - Existing View

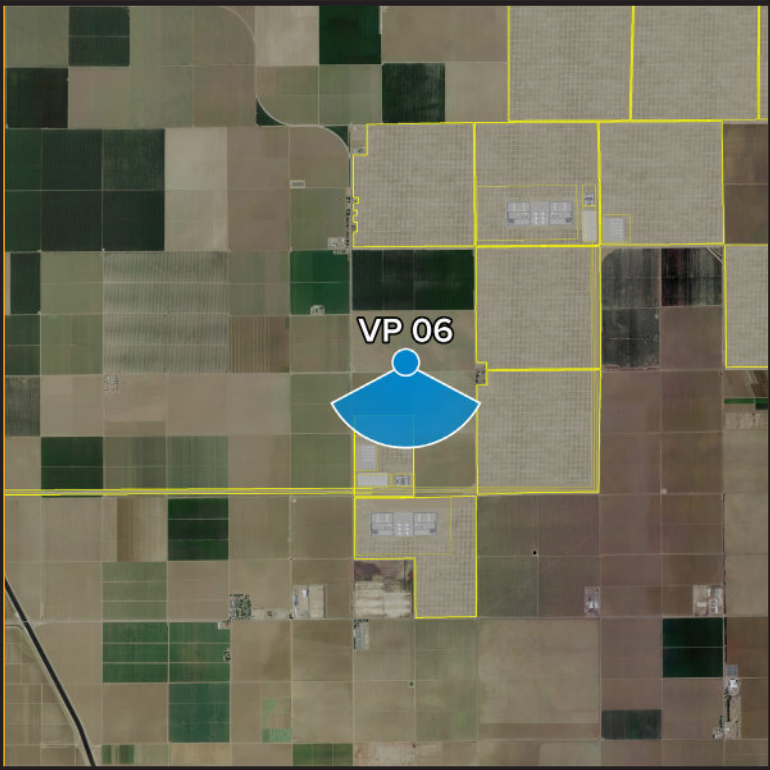
For on-screen display:  
Scale bar to be 4 inches wide  
Viewing distance 19.7 inches



Project Darden

Viewpoint 6  
W Cerini Ave - Residences  
Looking South

Viewpoint Location    Project Area



Easting Position: 120.239018'  
Northing Position: 36.458105'  
Elevation of Viewpoint Position (MAD83): 2573  
Height of Camera Above Ground (ft): 5.58  
Date of Photography: 15-Aug-23 at 3:09 pm  
Orientation of View: S  
Horizontal Field of View: 124°  
Vertical Field of View: 55°

CORRECT VIEWING OF TRUEVIEW™ PHOTO SIMULATIONS

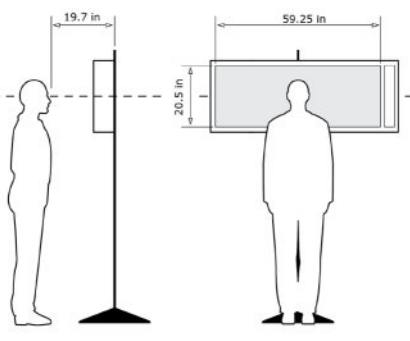


Photo Simulation Created Using  
TrueView™ Technology  
(Patent No.: US 6,184,906 B2)  
Provided by







**Viewpoint 6 - W Cerini Ave - Residences, Looking South - Proposed View**

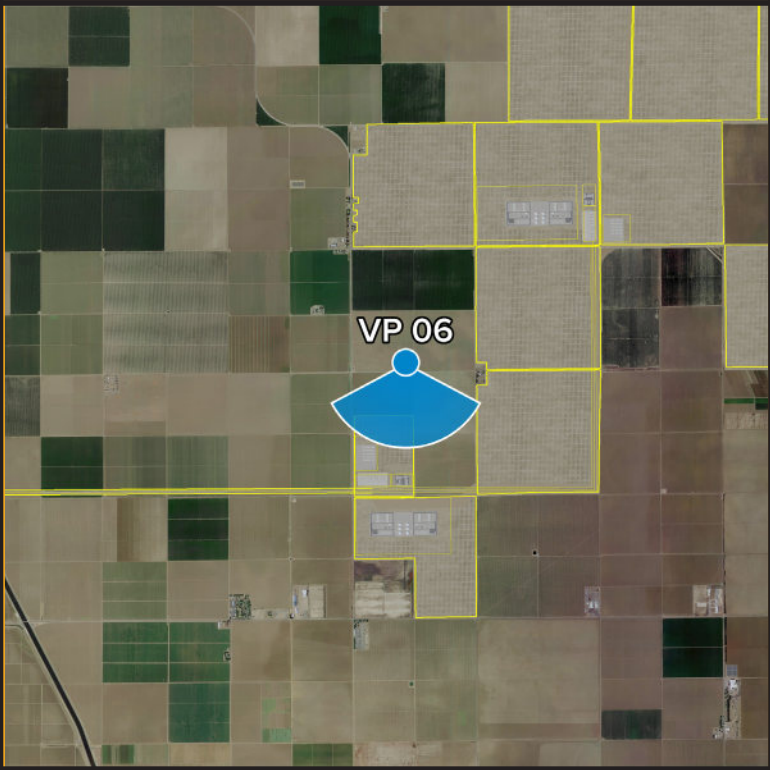
For on-screen display:  
Scale bar to be 4 inches wide  
Viewing distance 19.7 inches



Project Darden

**Viewpoint 6**  
W Cerini Ave - Residences  
Looking South

● Viewpoint Location ● Project Area



Easting Position: **-120.239018°**  
Northing Position: **36.458105°**  
Elevation of Viewpoint Position (MAD83): **2573**  
Height of Camera Above Ground (ft): **5.58**  
Date of Photography: **15-Aug-23 at 3:09 pm**  
Orientation of View: **S**  
Horizontal Field of View: **124°**  
Vertical Field of View: **55°**

CORRECT VIEWING OF TRUEVIEW™ PHOTO SIMULATIONS

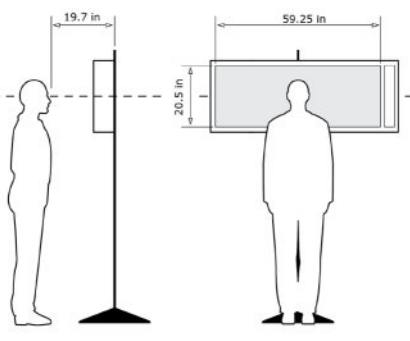


Photo Simulation Created Using  
TrueView™ Technology  
(Patent No.: US 6,184,906 B2)  
Provided by

**Truescape®**  
truescape.com





**Viewpoint 6 - W Cerini Ave - Residences, Looking South - Proposed Overlay View**

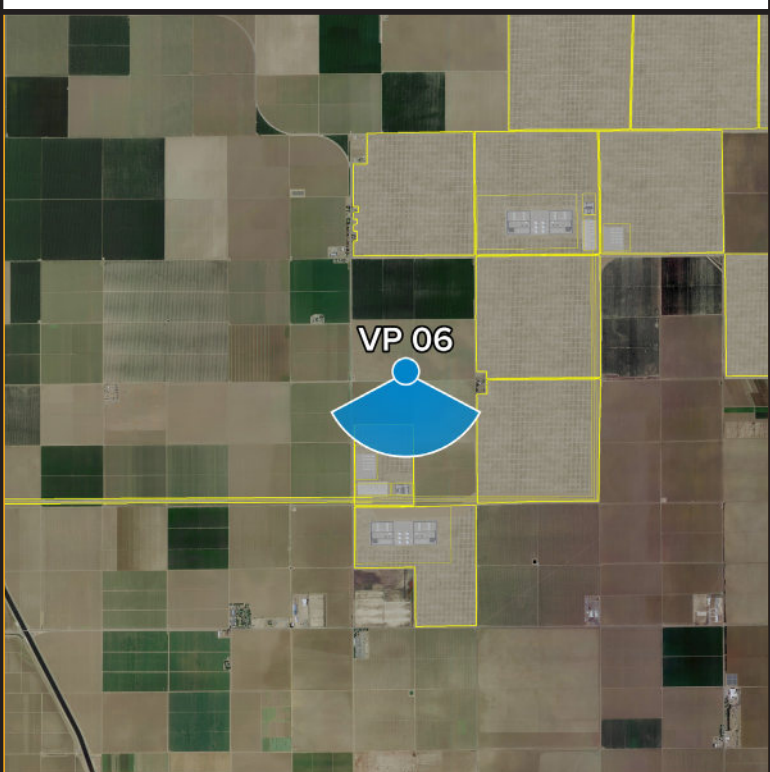
For on-screen display:  
Scale bar to be 4 inches wide  
Viewing distance 19.7 inches



Project Darden

**Viewpoint 6**  
W Cerini Ave - Residences  
Looking South

● Viewpoint Location ● Project Area



Easting Position: **-120.239018°**  
Northing Position: **36.458105°**  
Elevation of Viewpoint Position (MAD3): **2573**  
Height of Camera Above Ground (ft): **5.58**  
Date of Photography: **15-Aug-23 at 3:09 pm**  
Orientation of View: **S**  
Horizontal Field of View: **124°**  
Vertical Field of View: **55°**

CORRECT VIEWING OF TRUEVIEW™ PHOTO SIMULATIONS

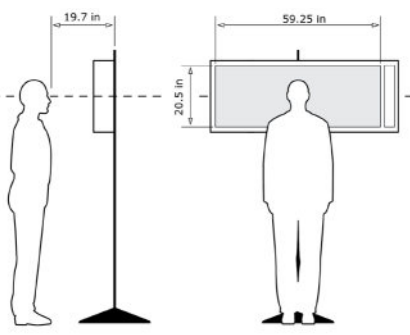


Photo Simulation Created Using  
TrueView™ Technology  
(Patent No.: US 6,184,906 B2)  
Provided by

**Truescape®**  
truescape.com





Viewpoint 6 - W Cerini Ave - Residences, Looking South - Proposed View with Crop Outline

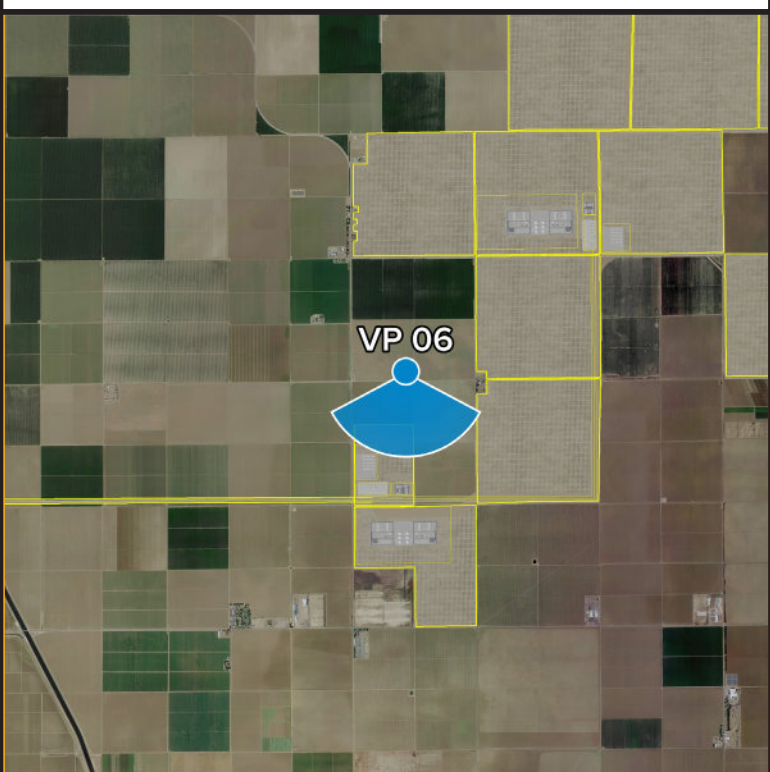
For on-screen display:  
Scale bar to be 4 inches wide  
Viewing distance 19.7 inches



Project Darden

**Viewpoint 6**  
W Cerini Ave - Residences  
Looking South

● Viewpoint Location ● Project Area



Easting Position: 120.239018'  
Northing Position: 36.458105'  
Elevation of Viewpoint Position (MAD83): 2573  
Height of Camera Above Ground (ft): 5.58  
Date of Photography: 15-Aug-23 at 3:09 pm  
Orientation of View: S  
Horizontal Field of View: 124°  
Vertical Field of View: 55°

CORRECT VIEWING OF TRUEVIEW™ PHOTO SIMULATIONS

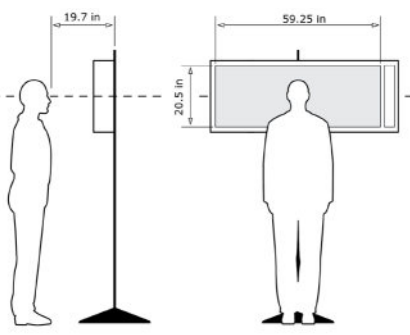


Photo Simulation Created Using  
TrueView™ Technology  
(Patent No.: US 6,184,906 B2)  
Provided by

**Truescape®**  
truescape.com





For on-screen display:  
Scale bar to be 4 inches wide  
Viewing distance 19.7 inches





For on-screen display:  
Scale bar to be 4 inches wide  
Viewing distance 19.7 inches





For on-screen display:  
Scale bar to be 4 inches wide  
Viewing distance 19.7 inches