

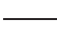
DOCKETED	
Docket Number:	23-AFC-01
Project Title:	Morton Bay Geothermal Project (MBGP)
TN #:	252491-8
Document Title:	Morton Bay Geothermal Project Data Request Response Set 1 Part 8
Description:	N/A
Filer:	Jerry Salamy
Organization:	Jacobs
Submitter Role:	Applicant Consultant
Submission Date:	10/2/2023 7:58:39 PM
Docketed Date:	10/3/2023

 Zone X Shaded (Levee Protected)

 Morton Bay

 Elmore North

 Black Rock

 XS

 Zone AE

 Streamcenterline

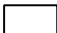
 Merge_Major

S_FLD_HAZ_AR-Effective

 A

 AE

 AO

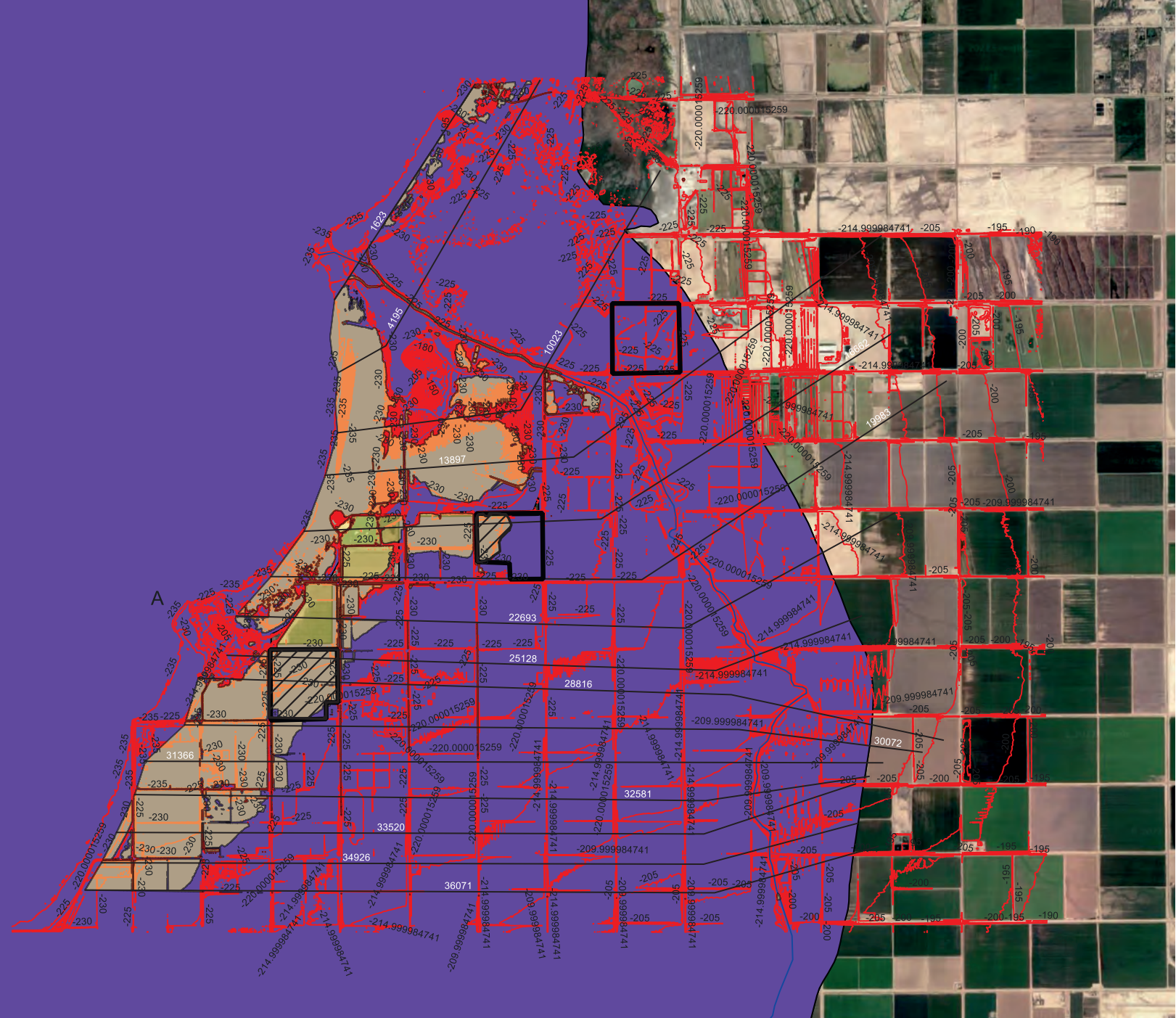
 D

 X



Google.cn Satellite

0 5,000 10,000 ft



ALAMO RIVER
IMPERIAL COUNTY
FLOODPLAIN WORKMAP

MRC LLC

29830 N. 78TH WAY, SCOTTSDALE, AZ 85266
Phone: (480) 513-7263 Fax: (480) 656-1304
www.mrcllc.net



EXHIBIT 4

(Annotated FIRM Panel)

Legend

- Morton Bay
- Elmore North
- Black Rock
- Center Line
- Zone A

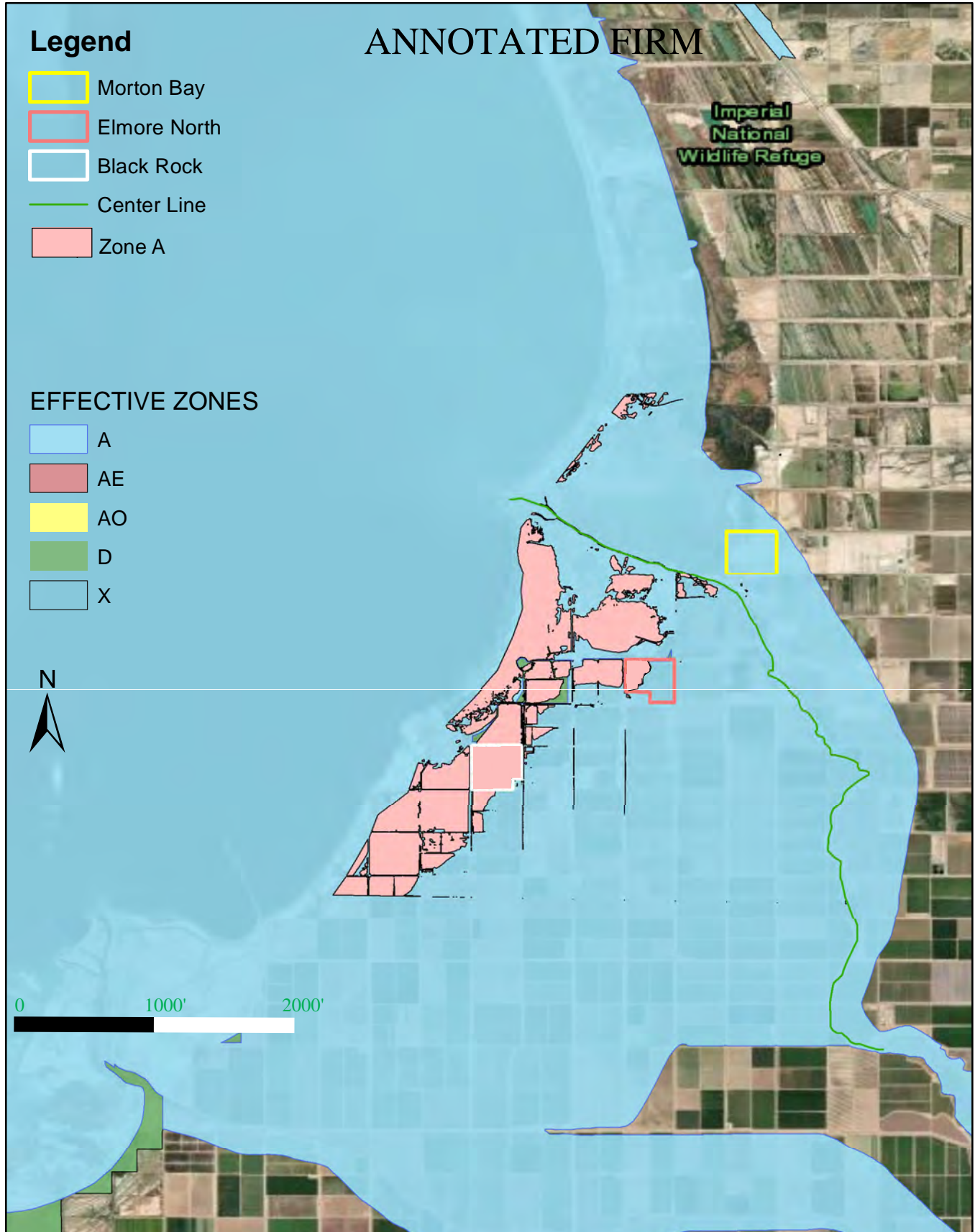
EFFECTIVE ZONES

- A
- AE
- AO
- D
- X



ANNOTATED FIRM

**Imperial
National
Wildlife Refuge**



Drawing Number: Date: Drawn By: Job Number: As Shown Scale: Date:	ALAMO RIVER IMPERIAL COUNTY ANNOTATED FIRM		MRC LLC 29830 N. 78TH WAY, SCOTTSDALE, AZ 85266 Phone: (480) 513-7263 Fax: (480) 656-2304 www.mrclic.net					
---	---	--	--	--	--	--	--	--

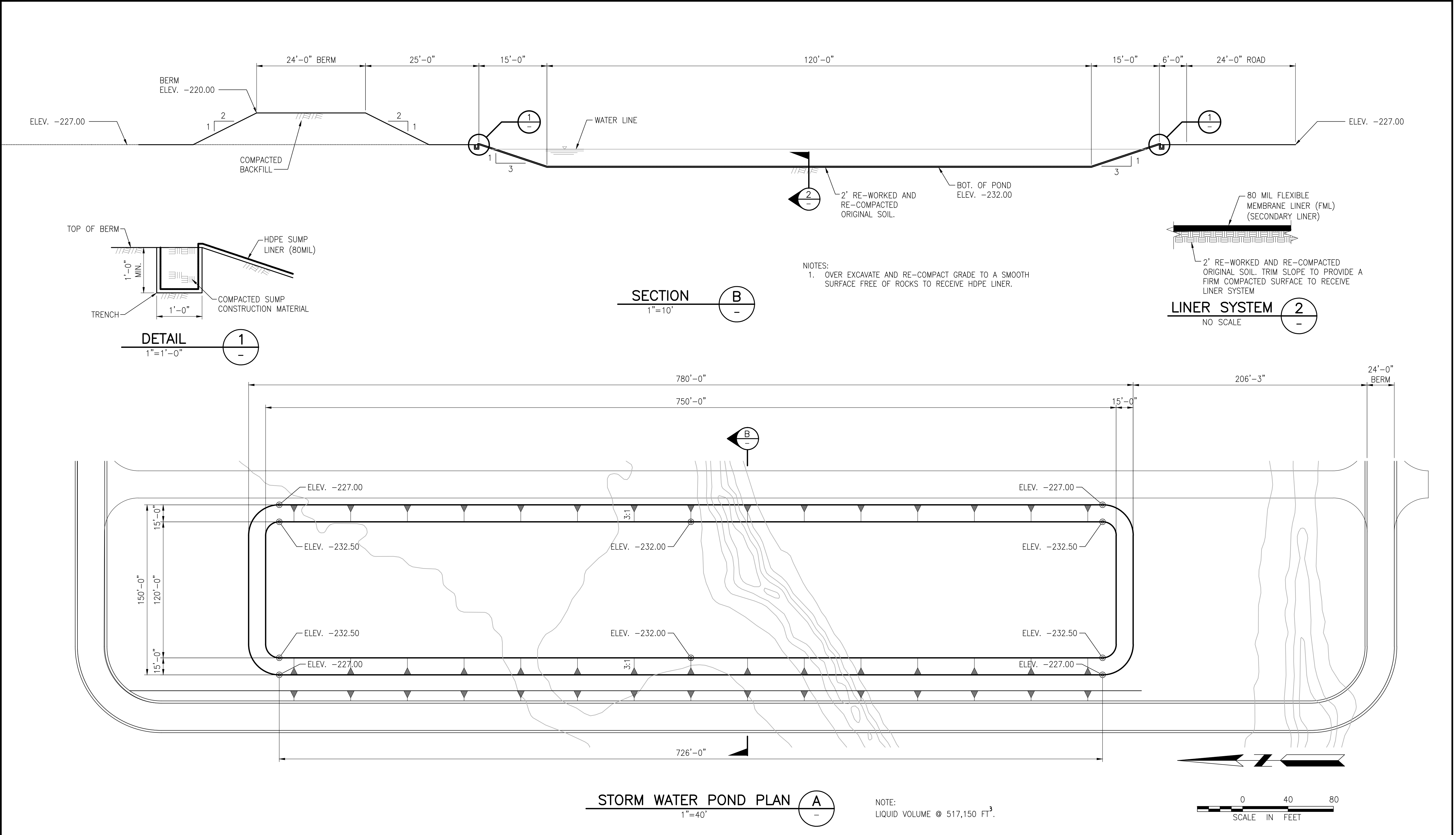
EXHIBIT 5

(Hydraulic Models and Electronic Files)

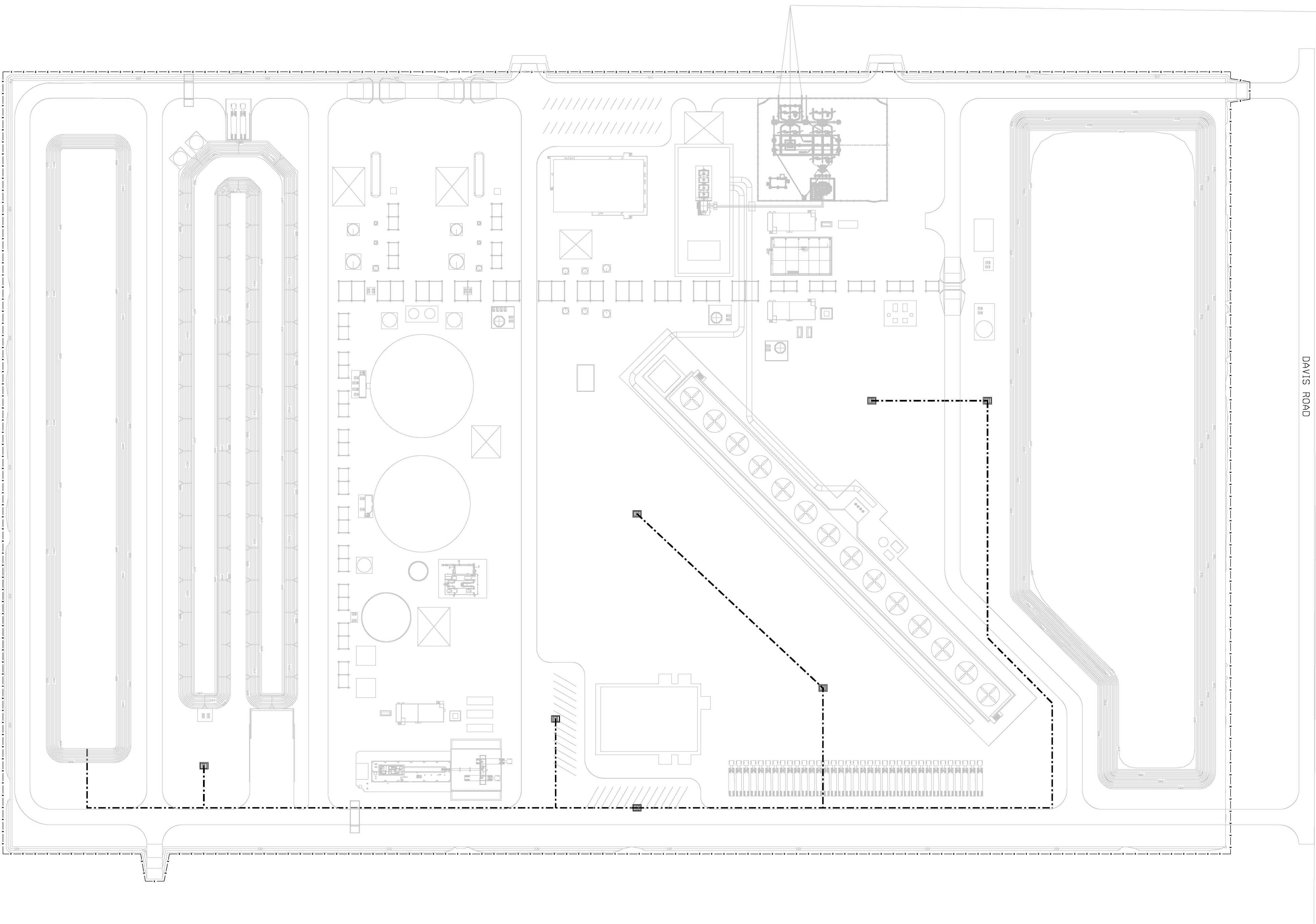
MBGP Attachment DRR 109 Brind Pond Liner Design



Plot Date: 20 Jan 2023, - 16:19:12; Drawing file: S:\CAD Folder\CADFILES\242\067\Civil drawings\ MB-C3-303-1.dwg

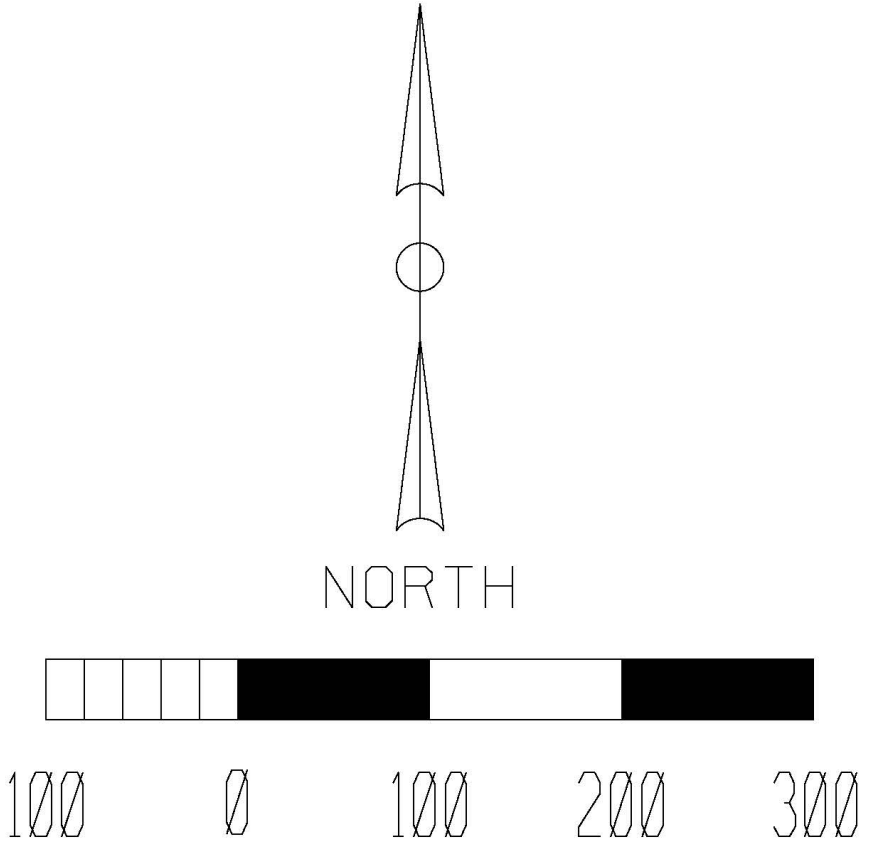


<p>THESE DRAWINGS ARE INSTRUMENTS OF PROFESSIONAL DESIGN SERVICES PERFORMED BY VEIZADES & ASSOCIATES INC. FOR THIS SPECIFIC PROJECT REFLECTING THE UNIQUE REQUIREMENTS OF THE PROJECT. ANY UNAUTHORIZED CHANGES OR USE OF THESE DRAWINGS, INCLUDING ANY INFORMATION CONTAINED THEREIN, FOR ANY OTHER PROJECT IS PROHIBITED. THE CLIENT AGREES TO INDEMNIFY VEIZADES & ASSOCIATES, INC. AGAINST ANY CLAIMS OR DAMAGES ARISING FROM SUCH UNAUTHORIZED CHANGES OR USE. VEIZADES & ASSOCIATES, INC. IS THE AUTHOR OF THESE DRAWINGS AND RETAINS ALL RIGHTS INCLUDING COPY RIGHTS.</p>					<p>WARNING</p> <p>IF BAR BELOW DOES NOT MEASURE 1 INCH THEN DRAWING IS NOT TO SCALE</p> <p>0 1 1 INCH</p>	<p>VEIZADES & ASSOCIATES, INC. CONSULTING ENGINEERS</p> <p>5 THIRD STREET • SUITE 400 • SAN FRANCISCO • CA 94103 TEL: 415. 394.8855 FAX: 415. 394.8866</p>	DESIGNED BY BAP		<p>BHE RENEWABLES</p>	PROJECT NO. 242-067
	CHECKED BY HGV	CONTRACT NO.								
	DRAFTED BY NP	CADFILE NO.								
	APPROVED BY HGV	SHEET NO. MB-C3-303-1								
DATE 01/18/23										
SCALE 1"=40'									REV. NO. A	
<p>NEW GENERATION PROJECTS MORTON BAY</p>										
<p>STORM WATER POND CIVIL PLAN</p>										



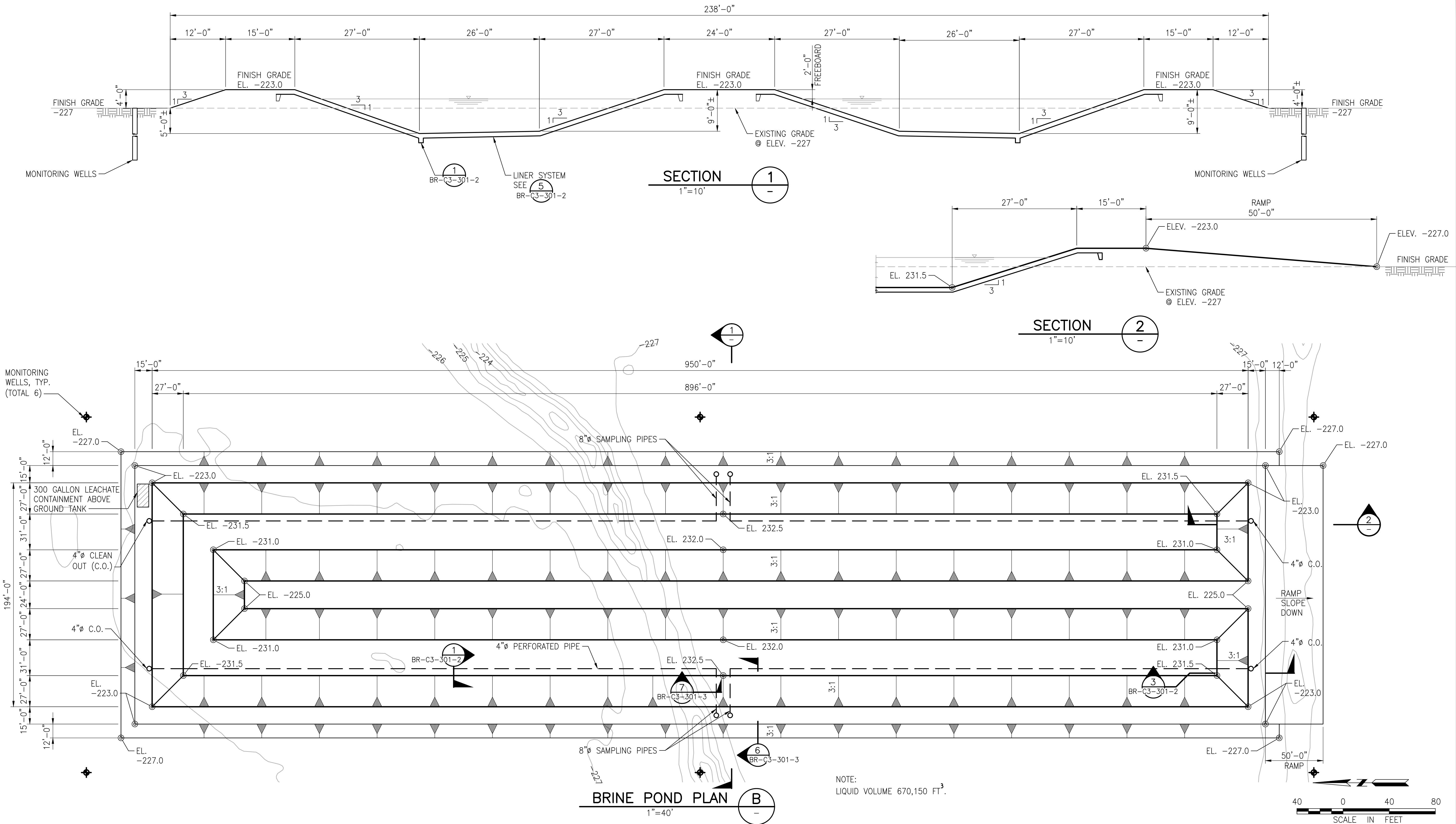
- LEGEND:
- PROPOSED EQUIPMENT / IMPROVEMENTS
 - PROPOSED FENCE
 - PROPOSED DRAINAGE INLET
 - PROPOSED 1' CONTOURS
 - PROPOSED STORMWATER PIPE

PRELIMINARY STORMWATER PIPING PLAN
SCALE: 1"=100'



--	--	--	--	--	--	--	--	--	--	--	--	--	--	--	--	--	--	--	--	--	--	--	--	--	--	--	--	--	--	--	--	--	--	--	--	--	--	--	--	--	--	--	--	--	--	--	--	--	--	--	--	--	--	--	--	--	--	--	--	--	--	--	--	--	--	--	--	--	--	--	--	--	--	--	--	--	--	--	--	--	--	--	--	--	--	--	--	--	--	--	--	--	--	--	--	--	--	--	--	--	--	--	--	--	--	--	--	--	--	--	--	--	--	--	--	--	--	--	--	--	--	--	--	--	--	--	--	--	--	--	--	--	--	--	--	--	--	--	--	--	--	--	--	--	--	--	--	--	--	--	--	--	--	--	--	--	--	--	--	--	--	--	--	--	--	--	--	--	--	--	--	--	--	--	--	--	--	--	--	--	--	--	--	--	--	--	--	--	--	--	--	--	--	--	--	--	--	--	--	--	--	--	--	--	--	--	--	--	--	--	--	--	--	--	--	--	--	--	--	--	--	--	--	--	--	--	--	--	--	--	--	--	--	--	--	--	--	--	--	--	--	--	--	--	--	--	--	--	--	--	--	--	--	--	--	--	--	--	--	--	--	--	--	--	--	--	--	--	--	--	--	--	--	--	--	--	--	--	--	--	--	--	--	--	--	--	--	--	--	--	--	--	--	--	--	--	--	--	--	--	--	--	--	--	--	--	--	--	--	--	--	--	--	--	--	--	--	--	--	--	--	--	--	--	--	--	--	--	--	--	--	--	--	--	--	--	--	--	--	--	--	--	--	--	--	--	--	--	--	--	--	--	--	--	--	--	--	--	--	--	--	--	--	--	--	--	--	--	--	--	--	--	--	--	--	--	--	--	--	--	--	--	--	--	--	--	--	--	--	--	--	--	--	--	--	--	--	--	--	--	--	--	--	--	--	--	--	--	--	--	--	--	--	--	--	--	--	--	--	--	--	--	--	--	--	--	--	--	--	--	--	--	--	--	--	--	--	--	--	--	--	--	--	--	--	--	--	--	--	--	--	--	--	--	--	--	--	--	--	--	--	--	--	--	--	--	--	--	--	--	--	--	--	--	--	--	--	--	--	--	--	--	--	--	--	--	--	--	--	--	--	--	--	--	--	--	--	--	--	--	--	--	--	--	--	--	--	--	--	--	--	--	--	--	--	--	--	--	--	--	--	--	--	--	--	--	--	--	--	--	--	--	--	--	--	--	--	--	--	--	--	--	--	--	--	--	--	--	--	--	--	--	--	--	--	--	--	--	--	--	--	--	--	--	--	--	--	--	--	--	--	--	--	--	--	--	--	--	--	--	--	--	--	--	--	--	--	--	--	--	--	--	--	--	--	--	--	--	--	--	--	--	--	--	--	--	--	--	--	--	--	--	--	--	--	--	--	--	--	--	--	--	--	--	--	--	--	--	--	--	--	--	--	--	--	--	--	--	--	--	--	--	--	--	--	--	--	--	--	--	--	--	--	--	--	--	--	--	--	--	--	--	--	--	--	--	--	--	--	--	--	--	--	--	--	--	--	--	--	--	--	--	--	--	--	--	--	--	--	--	--	--	--	--	--	--	--	--	--	--	--	--	--	--	--	--	--	--	--	--	--	--	--	--	--	--	--	--	--	--	--	--	--	--	--	--	--	--	--	--	--	--	--	--	--	--	--	--	--	--	--	--	--	--	--	--	--	--	--	--	--	--	--	--	--	--	--	--	--	--	--	--	--	--	--	--	--	--	--	--	--	--	--	--	--	--	--	--	--	--	--	--	--	--	--	--	--	--	--	--	--	--	--	--	--	--	--	--	--	--	--	--	--	--	--	--	--	--	--	--	--	--	--	--	--	--	--	--	--	--	--	--	--	--	--	--	--	--	--	--	--	--	--	--	--	--	--	--	--	--	--	--	--	--	--	--	--	--	--	--	--	--	--	--	--	--	--	--	--	--	--	--	--	--	--	--	--	--	--	--	--	--	--	--	--	--	--	--	--	--	--	--	--	--	--	--	--	--	--	--	--	--	--	--	--	--	--	--	--	--	--	--	--	--	--	--	--	--	--	--	--	--	--	--	--	--	--	--	--	--	--	--	--	--	--	--	--	--	--	--	--	--	--	--	--	--	--	--	--	--	--	--	--	--	--	--	--	--	--	--	--	--	--	--	--	--	--	--	--	--	--	--	--	--	--	--	--	--	--	--	--	--	--	--	--	--	--	--	--	--	--	--	--	--	--	--	--	--	--	--	--	--	--	--	--	--	--	--	--	--	--	--	--	--	--	--	--	--	--	--	--	--	--	--	--	--	--	--	--	--	--	--	--	--	--	--	--	--	--	--	--	--	--	--	--	--	--	--	--	--	--	--	--	--	--	--	--	--	--	--	--	--	--	--	--	--	--	--	--	--	--	--	--	--	--	--	--	--	--	--	--	--	--	--	--	--	--	--	--	--	--	--	--	--	--	--	--	--	--	--	--	--	--	--	--	--	--	--	--	--	--	--	--	--	--	--	--	--	--	--	--	--	--	--	--	--	--	--	--	--	--	--	--	--	--	--	--	--	--	--	--	--	--	--	--	--	--	--	--	--	--	--	--	--	--	--	--	--	--	--	--	--	--	--	--	--	--	--	--	--	--	--	--	--	--	--	--	--	--	--	--	--	--	--	--	--	--	--	--	--	--	--	--	--	--	--	--	--	--	--	--	--	--	--	--	--	--	--	--	--	--	--	--	--	--	--	--	--	--	--	--	--	--	--	--	--	--	--	--	--	--	--	--	--	--	--	--	--	--	--	--	--	--	--	--	--	--	--	--	--	--	--	--	--	--	--	--	--	--	--	--	--	--	--	--	--	--	--	--	--	--	--	--	--	--	--	--	--	--	--	--	--	--	--	--	--	--	--	--	--	--	--	--	--	--	--	--	--	--	--	--	--	--	--	--	--	--	--	--	--	--	--	--	--	--	--	--	--	--	--	--	--	--	--	--	--	--	--	--	--	--	--	--	--	--	--	--	--	--	--	--	--	--	--	--	--	--	--	--	--	--	--	--	--	--	--	--	--	--	--	--	--	--	--	--	--	--	--	--	--	--	--	--	--	--	--	--

Plot Date: 13 Jan 2023, - 18:19:56; Drawing file: S:\CAD Folder\CADFILES\242\067\Civil drawings\ MB-C3-301-1.dwg



THESE DRAWINGS ARE INSTRUMENTS OF PROFESSIONAL DESIGN SERVICES PERFORMED BY VEIZADES & ASSOCIATES INC. FOR THIS SPECIFIC PROJECT REFLECTING THE UNIQUE REQUIREMENTS OF THE PROJECT. ANY UNAUTHORIZED CHANGES OR USE OF THESE DRAWINGS, INCLUDING ANY INFORMATION CONTAINED THEREIN, FOR ANY OTHER PROJECT IS PROHIBITED. THE CLIENT AGREES TO INDEMNIFY VEIZADES & ASSOCIATES, INC. AGAINST ANY CLAIMS OR DAMAGES ARISING FROM SUCH UNAUTHORIZED CHANGES OR USE. VEIZADES & ASSOCIATES, INC. IS THE AUTHOR OF THESE DRAWINGS AND RETAINS ALL RIGHTS INCLUDING COPY RIGHTS.

A	ISSUED FOR REVIEW	BAP	HGV	13/JAN/23	
NO.	REVISIONS	BY	APPR.	DATE	

WARNING
IF BAR BELOW
DOES NOT
MEASURE
1 INCH
THEN DRAWING
IS NOT
TO SCALE
0 1
1 INCH



VEIZADES & ASSOCIATES, INC.
CONSULTING ENGINEERS

5 THIRD STREET • SUITE 400 • SAN FRANCISCO • CA 94103
TEL: 415. 394.8855 FAX: 415. 394.8866

DESIGNED BY BAP
CHECKED BY HGV
DRAFTED BY NP
APPROVED BY HGV
DATE 12/07/22
SCALE 1"=40'



NEW GENERATION PROJECTS
MORTON BAY

BRINE POND CIVIL PLAN

PROJECT NO.
242-067

CONTRACT NO.

CADFILE NO.

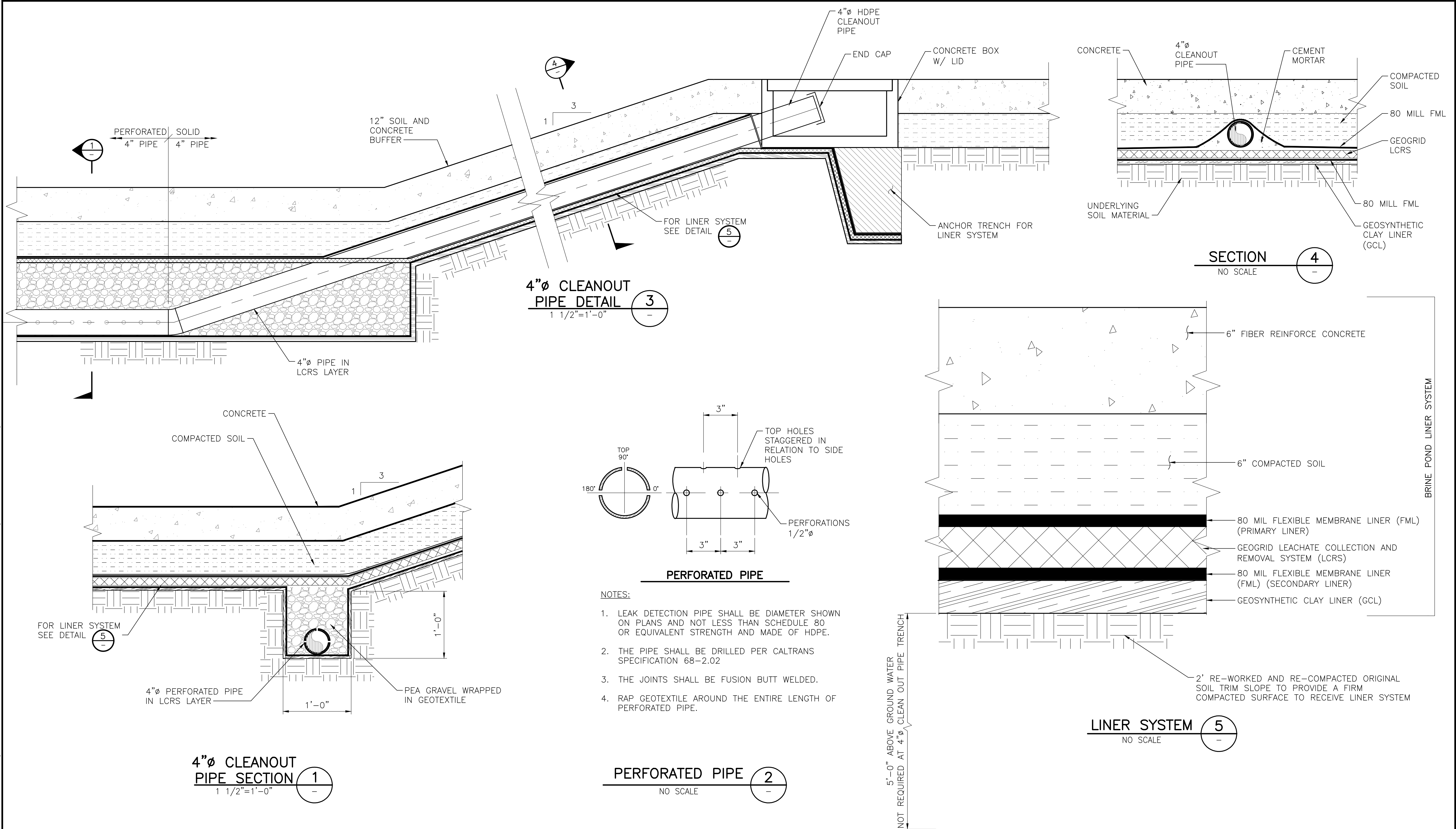
SHEET NO.

MB-C3-301-1

REV. NO.



Plot Date: 22 Feb 2023, - 10:44:03; Drawing file: S:\CAD Folder\CADFILES\242067\Civil drawings\ BR-C3-301-2.3.dwg



THESE DRAWINGS ARE INSTRUMENTS OF PROFESSIONAL DESIGN SERVICES PERFORMED BY VEIZADES & ASSOCIATES INC. FOR THIS SPECIFIC PROJECT REFLECTING THE UNIQUE REQUIREMENTS OF THE PROJECT. ANY UNAUTHORIZED CHANGES OR USE OF THESE DRAWINGS, INCLUDING ANY INFORMATION CONTAINED THEREIN, FOR ANY OTHER PROJECT IS PROHIBITED. THE CLIENT AGREES TO INDEMNIFY VEIZADES & ASSOCIATES, INC. AGAINST ANY CLAIMS OR DAMAGES ARISING FROM SUCH UNAUTHORIZED CHANGES OR USE. VEIZADES & ASSOCIATES, INC. IS THE AUTHOR OF THESE DRAWINGS AND RETAINS ALL RIGHTS INCLUDING COPYRIGHTS.

B	RE-ISSUED FOR REVIEW	BAP	HGV	02/22/23	
A	ISSUED FOR REVIEW	BAP	HGV	01/13/23	
NO.	REVISIONS	BY	APPR.	DATE	

WARNING

IF BAR BELOW DOES NOT MEASURE 1 INCH THEN DRAWING IS NOT TO SCALE

0 1

1 INCH

VEIZADES & ASSOCIATES, INC.
CONSULTING ENGINEERS

5 THIRD STREET • SUITE 400 • SAN FRANCISCO • CA 94103
TEL: 415. 394.8855 FAX: 415. 394.8866

DESIGNED BY
BAP

CHECKED BY
HGV

DRAFTED BY
DA

APPROVED BY
HGV

DATE
12/06/22

SCALE
1 1/2"=1'-0"



NEW GENERATION
BLACK ROCK PROJECT

BRINE POND CIVIL DETAILS - 1

PROJECT NO.
242-067

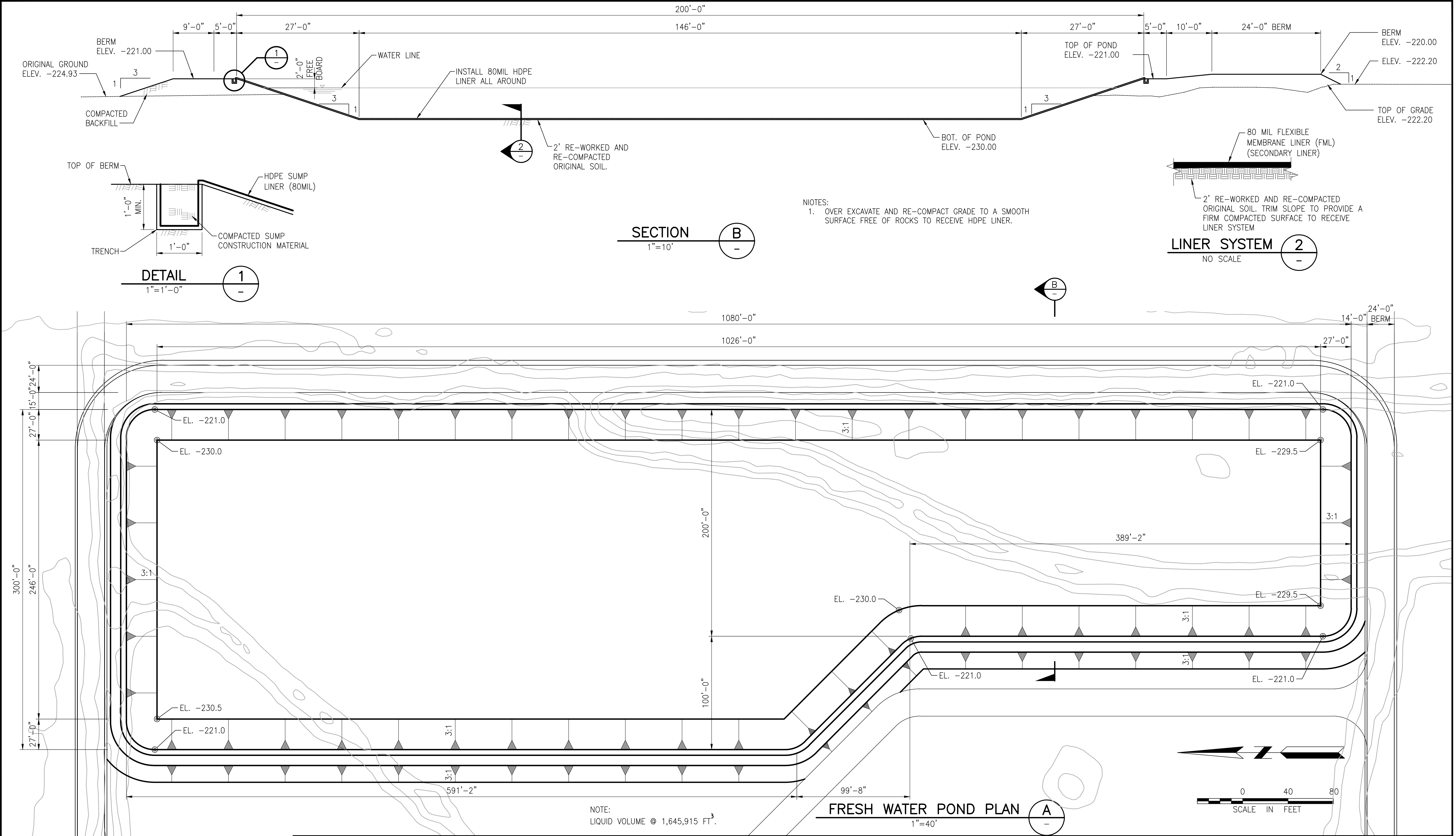
CONTRACT NO.

CADFILE NO.

SHEET NO.
BR-C3-301-2

REV. NO.

Plot Date: 20 Jan 2023, - 16:17:43; Drawing file: S:\CAD Folder\CADFILES\2421067\Civil drawings\ MB-C3-302-1.dwg



THESE DRAWINGS ARE INSTRUMENTS OF PROFESSIONAL DESIGN SERVICES PERFORMED BY VEIZADES & ASSOCIATES INC. FOR THIS SPECIFIC PROJECT REFLECTING THE UNIQUE REQUIREMENTS OF THE PROJECT. ANY UNAUTHORIZED CHANGES OR USE OF THESE DRAWINGS, INCLUDING ANY INFORMATION CONTAINED THEREIN, FOR ANY OTHER PROJECT IS PROHIBITED. THE CLIENT AGREES TO INDEMNIFY VEIZADES & ASSOCIATES, INC. AGAINST ANY CLAIMS OR DAMAGES ARISING FROM SUCH UNAUTHORIZED CHANGES OR USE. VEIZADES & ASSOCIATES, INC. IS THE AUTHOR OF THESE DRAWINGS AND RETAINS ALL RIGHTS INCLUDING COPY RIGHTS.

A	ISSUED FOR REVIEW	BAP	HGV	20/JAN/23	
NO.	REVISIONS	BY	APPR.	DATE	

WARNING
IF BAR BELOW
DOES NOT
MEASURE
1 INCH
THEN DRAWING
IS NOT
TO SCALE
0 1
1 INCH

VEIZADES & ASSOCIATES, INC.
CONSULTING ENGINEERS
5 THIRD STREET • SUITE 400 • SAN FRANCISCO • CA 94103
TEL: 415. 394.8855 FAX: 415. 394.8866

DESIGNED BY
BAP
CHECKED BY
HGV
DRAFTED BY
NP
APPROVED BY
HGV
DATE
01/18/23
SCALE
1"=40'

BHE
RENEWABLES
NEW GENERATION PROJECTS
MORTON BAY
FRESH WATER POND CIVIL PLAN

PROJECT NO.
242-067
CONTRACT NO.
CADFILE NO.
SHEET NO.
MB-C3-302-1
REV. NO.
A

Figures



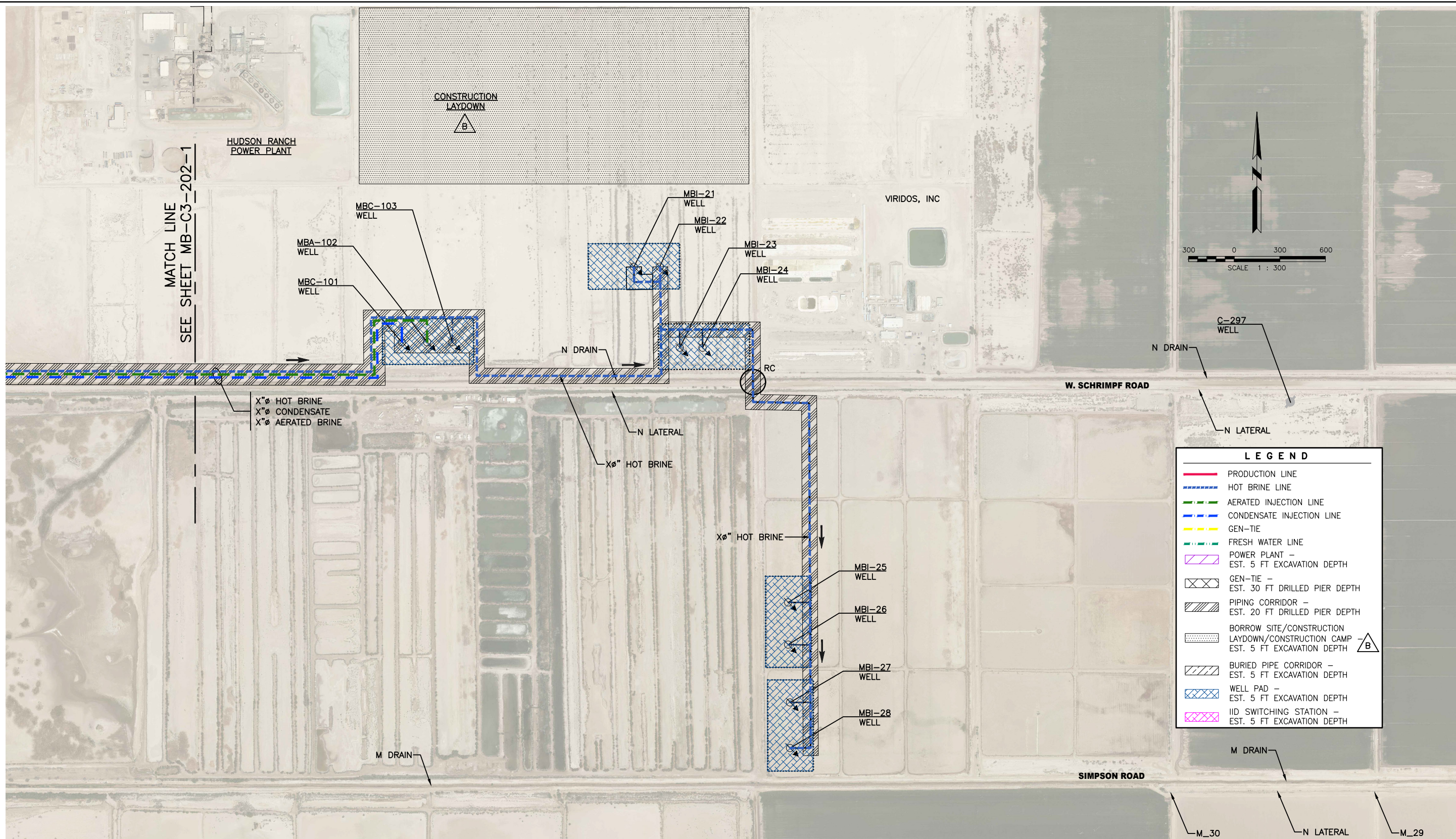
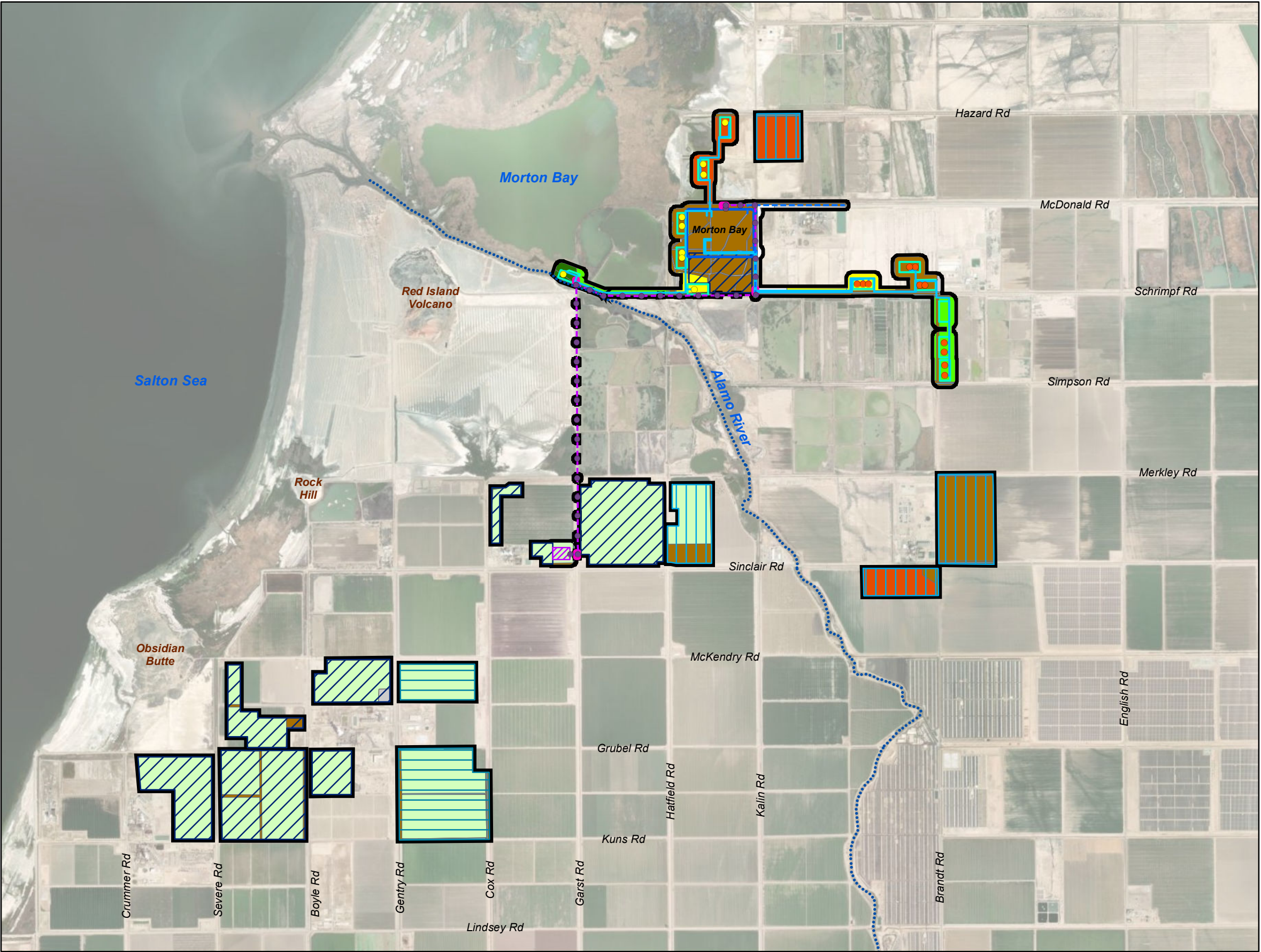


Figure 2-7bR
Depth of Excavation,
Morton Bay Geothermal Project
 Imperial County, California



Legend

- Biological Study Area
- Plant
- Well Pad
- Injection Well
- Production Well
- Pipeline
- Water Supply Pipeline
- Gen-Tie Line Pole
- Gen-Tie Line
- Pull Site
- Switching Station
- Borrow Pit
- Construction Camp
- Construction Laydown and Parking Areas

Land Cover and Vegetation Types

- Agriculture
- Barren Lands
- Canals and Drains
- Developed
- Disturbed with Vegetation
- Disturbed with No Vegetation
- Invasive Southwest Riparian Woodland and Shrubland/Tamarisk Thickets
- North American Arid West Emergent Marsh/Cattail Marsh
- North American Warm Desert Playa/Iodine Bush Scrub

Note:
Impacts to canals and drains are included for completeness;
no IID infrastructure will be impacted by this Project.

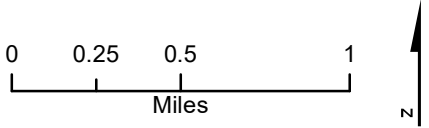


Figure DRR 25
Land Cover and Vegetation Types
Morton Bay Geothermal Project
Imperial County, California

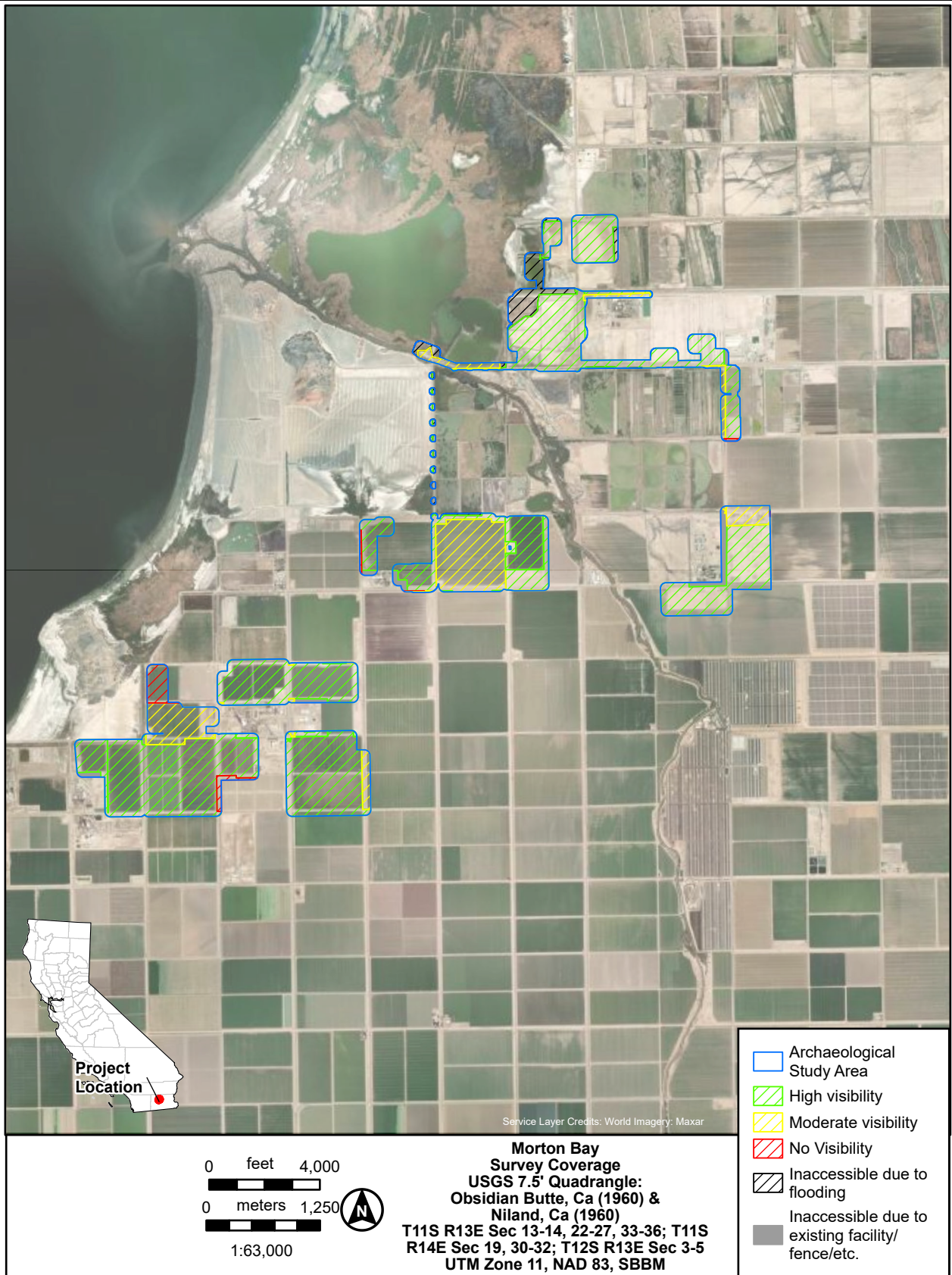


Figure DR 31
Archaeological Survey Map,
Morton Bay Geothermal Project
 Imperial County, California

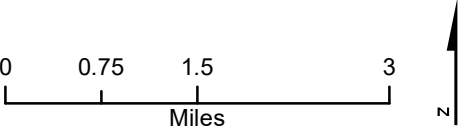
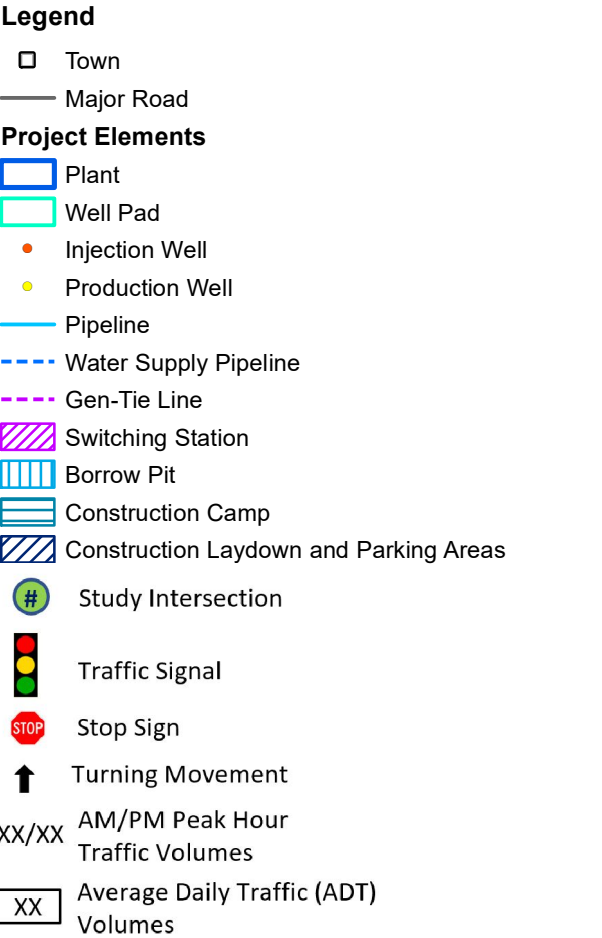


Figure DRR 88
Construction Project AM, PM,
and ADT Volume
Morton Bay Geothermal Project
Imperial County, California