

**DOCKETED**

<b>Docket Number:</b>	23-AFC-02
<b>Project Title:</b>	Elmore North Geothermal Project (ENGP)
<b>TN #:</b>	252490-13
<b>Document Title:</b>	Elmore North Geothermal Project Data Request Response Set 1 Part 13
<b>Description:</b>	N/A
<b>Filer:</b>	Jerry Salamy
<b>Organization:</b>	Jacobs
<b>Submitter Role:</b>	Applicant Consultant
<b>Submission Date:</b>	10/2/2023 7:50:34 PM
<b>Docketed Date:</b>	10/3/2023

# Legend

- Morton Bay
- Elmore North
- Black Rock
- Center Line
- Zone A

## EFFECTIVE ZONES

- A
- AE
- AO
- D
- X

# ANNOTATED FIRM

**Imperial  
National  
Wildlife Refuge**



0 1000' 2000'



Drawing Number: As Shown Scale: Date: Drawn By: Job Number:	ALAMO RIVER IMPERIAL COUNTY ANNOTATED FIRM	MRC LLC 29830 N. 78TH WAY, SCOTTSDALE, AZ 85266 Phone: (480) 513-7263 Fax: (480) 656-2304 <a href="http://www.mrcilc.net">www.mrcilc.net</a>		

# **EXHIBIT 5**

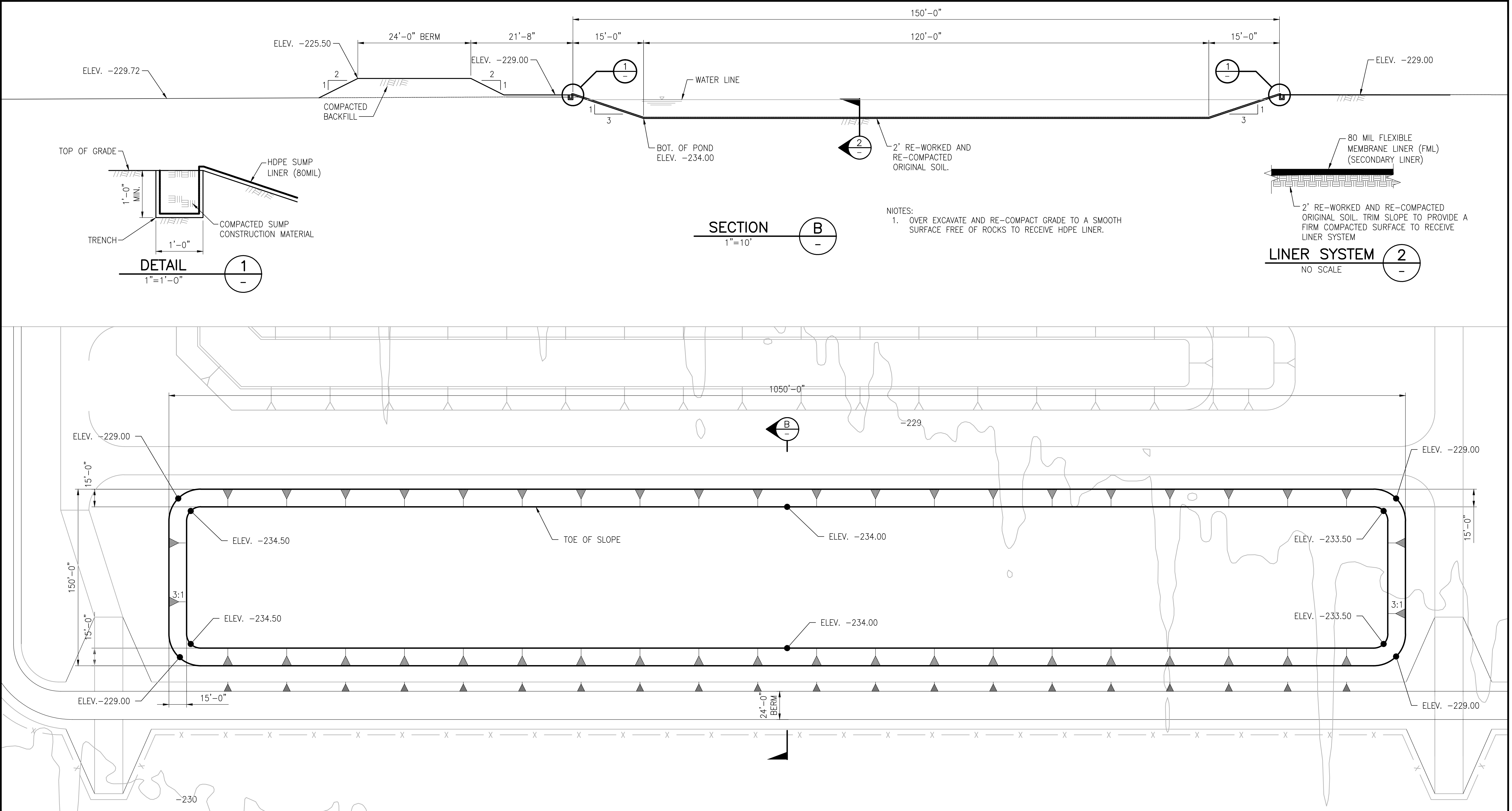
## **(Hydraulic Models and Electronic Files)**

# **ENGP Attachment DRR 105 Brine Pond Liner Design**





Plot Date: 20 Jan 2023, - 16:08:59; Drawing file: S:\CAD Folder\CADFILES\242\067\Civil drawings\ EN-C3-303-1.dwg



THESE DRAWINGS ARE INSTRUMENTS OF PROFESSIONAL DESIGN SERVICES PERFORMED BY VEIZADES & ASSOCIATES INC. FOR THIS SPECIFIC PROJECT REFLECTING THE UNIQUE REQUIREMENTS OF THE PROJECT. ANY UNAUTHORIZED CHANGES OR USE OF THESE DRAWINGS, INCLUDING ANY INFORMATION CONTAINED THEREIN, FOR ANY OTHER PROJECT IS PROHIBITED. THE CLIENT AGREES TO INDEMNIFY VEIZADES & ASSOCIATES, INC. AGAINST ANY CLAIMS OR DAMAGES ARISING FROM SUCH UNAUTHORIZED CHANGES OR USE. VEIZADES & ASSOCIATES, INC. IS THE AUTHOR OF THESE DRAWINGS AND RETAINS ALL RIGHTS INCLUDING COPY RIGHTS.

A	ISSUED FOR REVIEW	BAP	HGV	20/JAN/23
NO.	REVISIONS	BY	APPR.	DATE

WARNING  
IF BAR BELOW DOES NOT MEASURE 1 INCH THEN DRAWING IS NOT TO SCALE

0 1  
1 INCH

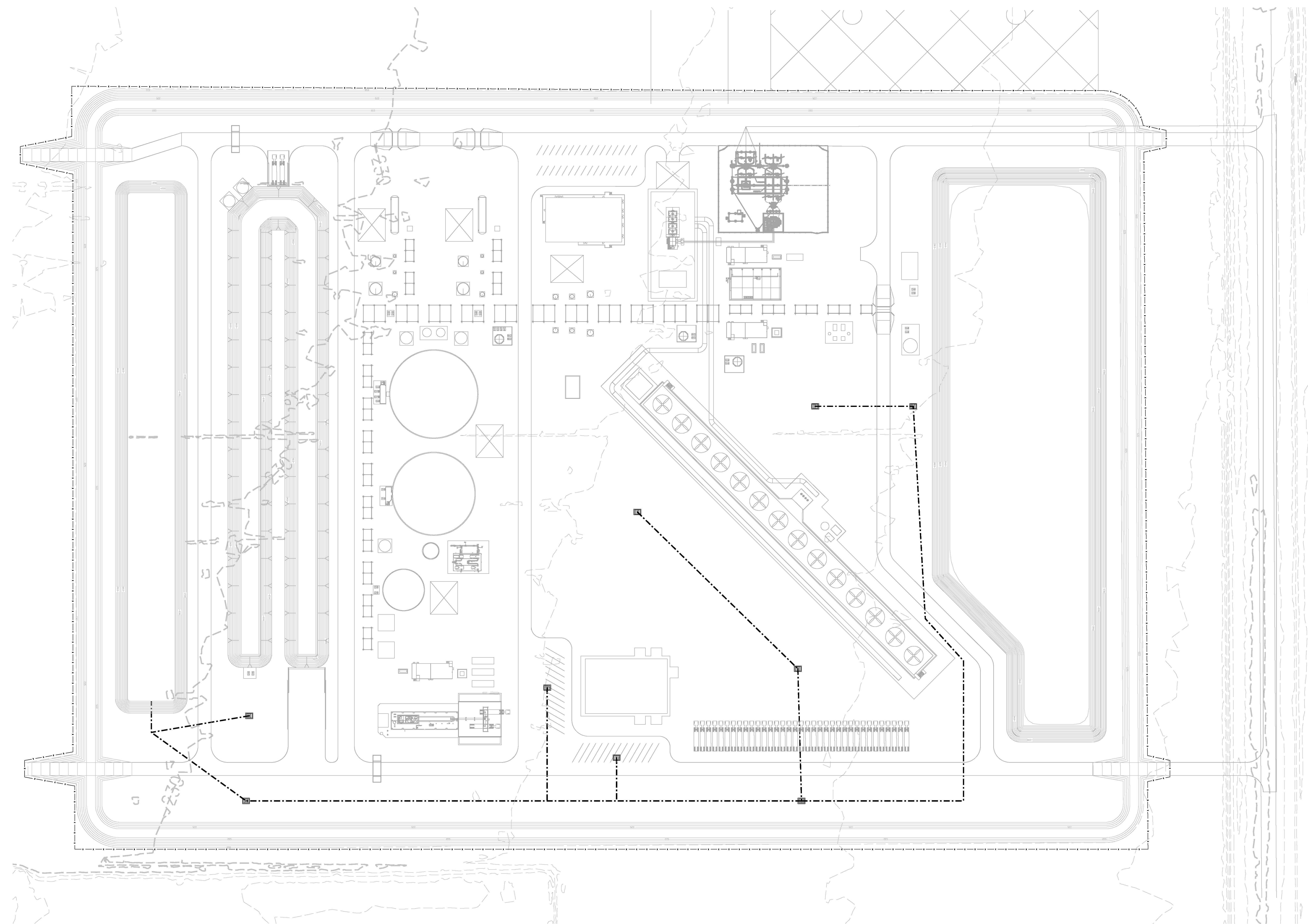
**VEIZADES & ASSOCIATES, INC.**  
CONSULTING ENGINEERS  
5 THIRD STREET • SUITE 400 • SAN FRANCISCO • CA 94103  
TEL: 415. 394.8855 FAX: 415. 394.8866

DESIGNED BY BAP
CHECKED BY HGV
DRAFTED BY NP
APPROVED BY HGV
DATE 01/18/22
SCALE 1"=40'

<b>BHE</b> RENEWABLES
NEW GENERATION ELMORE NORTH PROJECT
STORM WATER POND CIVIL PLAN

PROJECT NO. 242-067
CONTRACT NO.
CADFILE NO.
SHEET NO. <b>EN-C3-303-1</b>
REV. NO. A

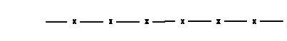




LEGEND:



PROPOSED EQUIPMENT / IMPROVEMENTS



PROPOSED FENCE

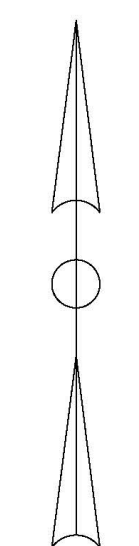


PROPOSED DRAINAGE INLET

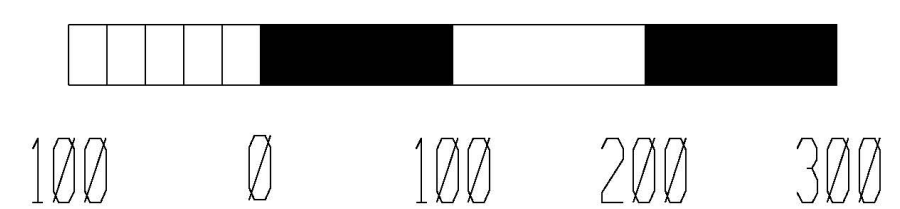




PROPOSED STORMWATER PIPE

PROPOSED 1' CONTOURS



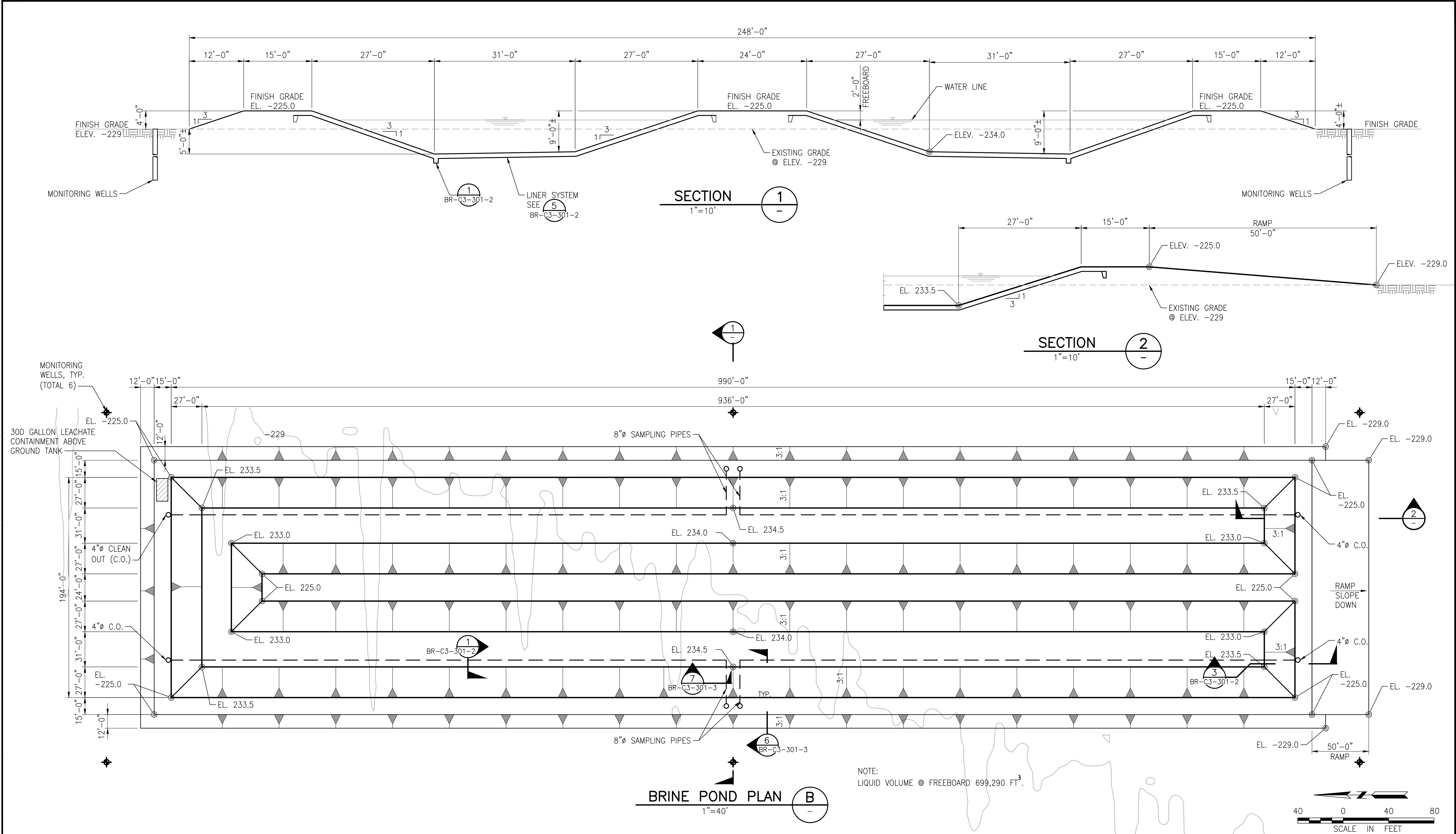
NORTH



											D SHEET SCALE	N/A	ENGINEERING AND PERMIT STAMPS (As Required)	CUSTOMER	DRG TITLE					
															ELMORE NORTH 147 MW GEOTHERMAL PLANT PRELIMINARY STORMWATER PIPING PLAN					
B	11/14/22	ISSUED FOR CLIENT REVIEW				JD	RS	JD												
A	10/31/22	ISSUED FOR CLIENT REVIEW				JD	RS	JD					WORLEY PROJECT No.							
REV	DATE	REVISION DESCRIPTION			DRAWN	DRAFT CHK	DESIGNED	ENG CHK	APPROVED	CUSTOMER	REF DRAWING No	REFERENCE DRAWING TITLE								
												418162-40300			DRG No	418162-40300-EN-CI-UTL-001	REV	B		



Plot Date: 13 Jan 2023, - 18:14:55; Drawing file: S:\CAD Folder\CADFILES\242\067\Civil drawings\ EN-C3-301-1.dwg



THESE DRAWINGS ARE INSTRUMENTS OF PROFESSIONAL DESIGN SERVICES PERFORMED BY VEIZADES & ASSOCIATES INC. FOR THIS SPECIFIC PROJECT REFLECTING THE UNIQUE REQUIREMENTS OF THE PROJECT. ANY UNAUTHORIZED CHANGES OR USE OF THESE DRAWINGS, INCLUDING ANY INFORMATION CONTAINED THEREIN, FOR ANY OTHER PROJECT IS PROHIBITED. THE CLIENT AGREES TO INDEMNIFY VEIZADES & ASSOCIATES, INC. AGAINST ANY CLAIMS OR DAMAGES ARISING FROM SUCH UNAUTHORIZED CHANGES OR USE. VEIZADES & ASSOCIATES, INC. IS THE AUTHOR OF THESE DRAWINGS AND RETAINS ALL RIGHTS INCLUDING COPY RIGHTS.

A	ISSUED FOR REVIEW	BAP	HGV	13/JAN/23	
NO.	REVISIONS	BY	APPR.	DATE	

WARNING  
IF BAR BELOW DOES NOT MEASURE 1 INCH THEN DRAWING IS NOT TO SCALE

0 1  
1 INCH

**VEIZADES & ASSOCIATES, INC.**  
CONSULTING ENGINEERS  
5 THIRD STREET • SUITE 400 • SAN FRANCISCO • CA 94103  
TEL: 415. 394.8855 FAX: 415. 394.8866

DESIGNED BY  
BAP  
CHECKED BY  
HGV  
DRAFTED BY  
NP  
APPROVED BY  
HGV  
DATE  
12/07/22  
SCALE  
1"=40'

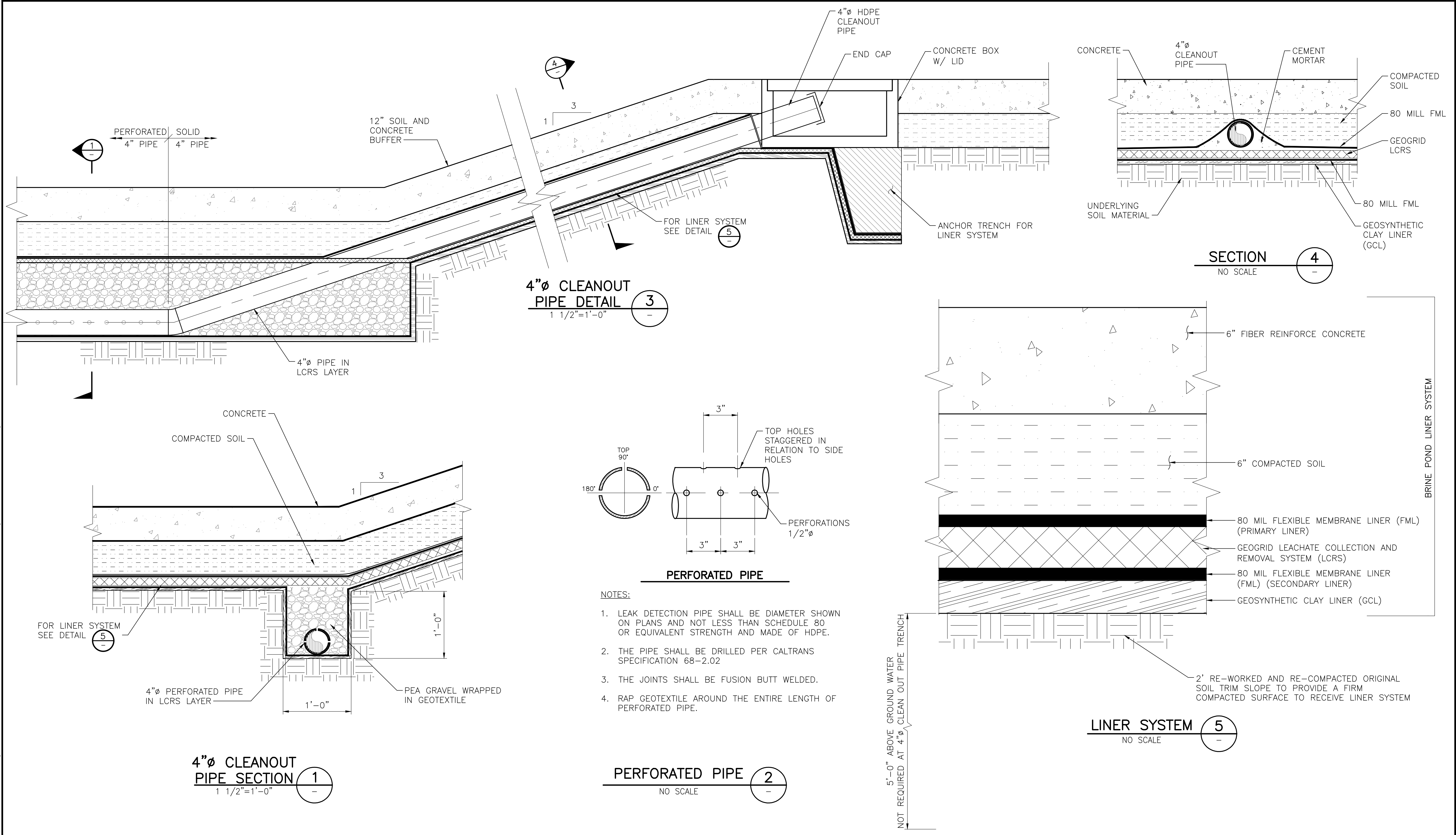
**BHE**  
RENEWABLES

NEW GENERATION  
ELMORE NORTH PROJECT

BRINE POND CIVIL PLAN

PROJECT NO.  
242-067  
CONTRACT NO.  
CADFILE NO.  
SHEET NO.  
**EN-C3-301-1**  
REV. NO.  
A

Plot Date: 22 Feb 2023, - 10:44:03; Drawing file: S:\CAD Folder\CADFILES\242067\Civil drawings\ BR-C3-301-2.3.dwg




THESE DRAWINGS ARE INSTRUMENTS OF PROFESSIONAL DESIGN SERVICES PERFORMED BY VEIZADES & ASSOCIATES INC. FOR THIS SPECIFIC PROJECT REFLECTING THE UNIQUE REQUIREMENTS OF THE PROJECT. ANY UNAUTHORIZED CHANGES OR USE OF THESE DRAWINGS, INCLUDING ANY INFORMATION CONTAINED THEREIN, FOR ANY OTHER PROJECT IS PROHIBITED. THE CLIENT AGREES TO INDEMNIFY VEIZADES & ASSOCIATES, INC. AGAINST ANY CLAIMS OR DAMAGES ARISING FROM SUCH UNAUTHORIZED CHANGES OR USE. VEIZADES & ASSOCIATES, INC. IS THE AUTHOR OF THESE DRAWINGS AND RETAINS ALL RIGHTS INCLUDING COPYRIGHTS.

B	RE-ISSUED FOR REVIEW	BAP	HGV	02/22/23
A	ISSUED FOR REVIEW	BAP	HGV	01/13/23
NO.	REVISIONS	BY	APPR.	DATE



A	ISSUED FOR REVIEW	BAP	HGV	20/JAN/23
NO.	REVISIONS	BY	APPR.	DATE

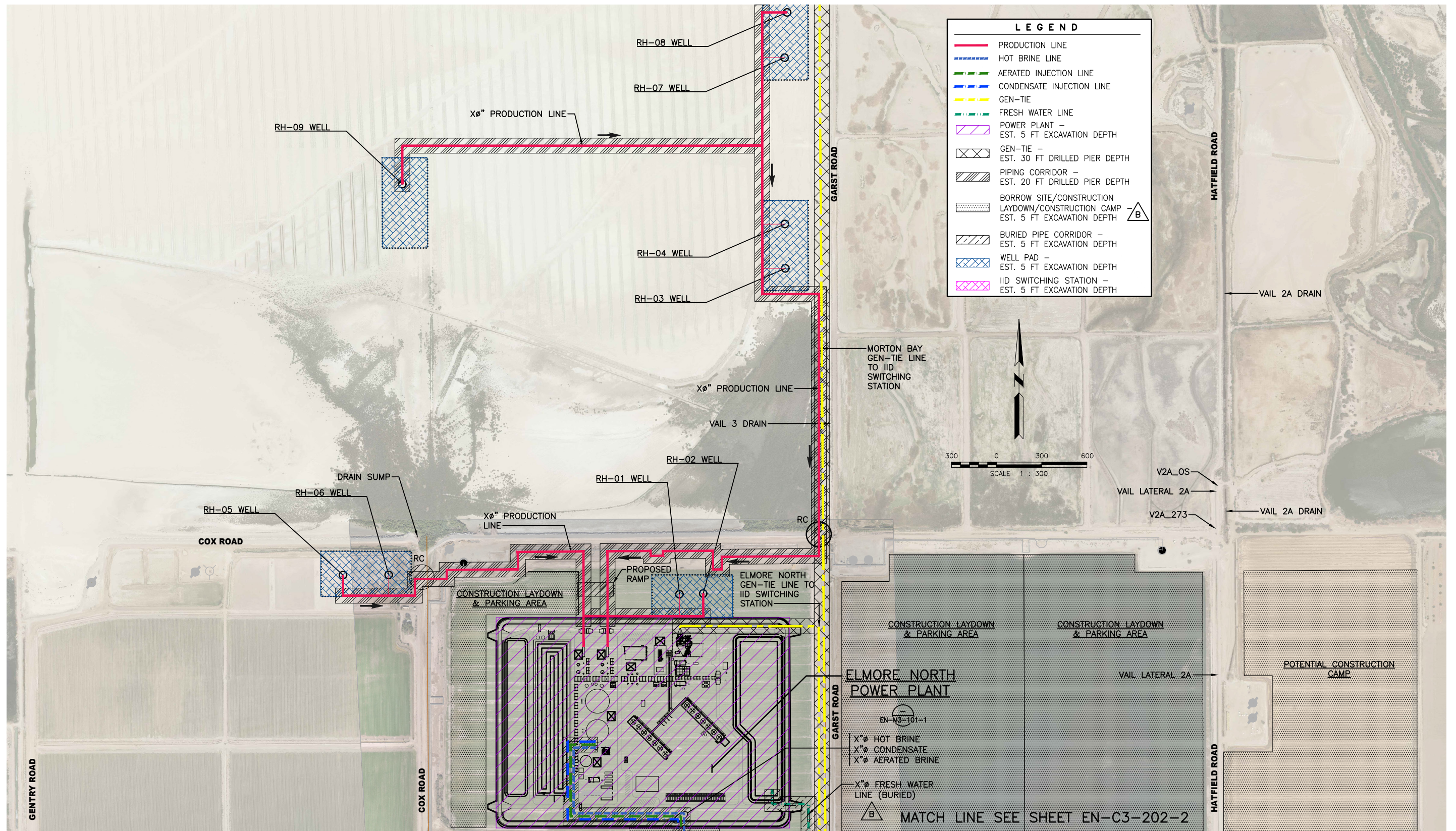
DESIGNED BY BAP
CHECKED BY HGV
DRAFTED BY NP
APPROVED BY HGV
DATE 01/18/22
SCALE 1"=40'

PROJECT NO. 242-067
CONTRACT NO.
CADFILE NO.
SHEET NO. <b>EN-C3-302-1</b>
REV. NO. 

## Figures

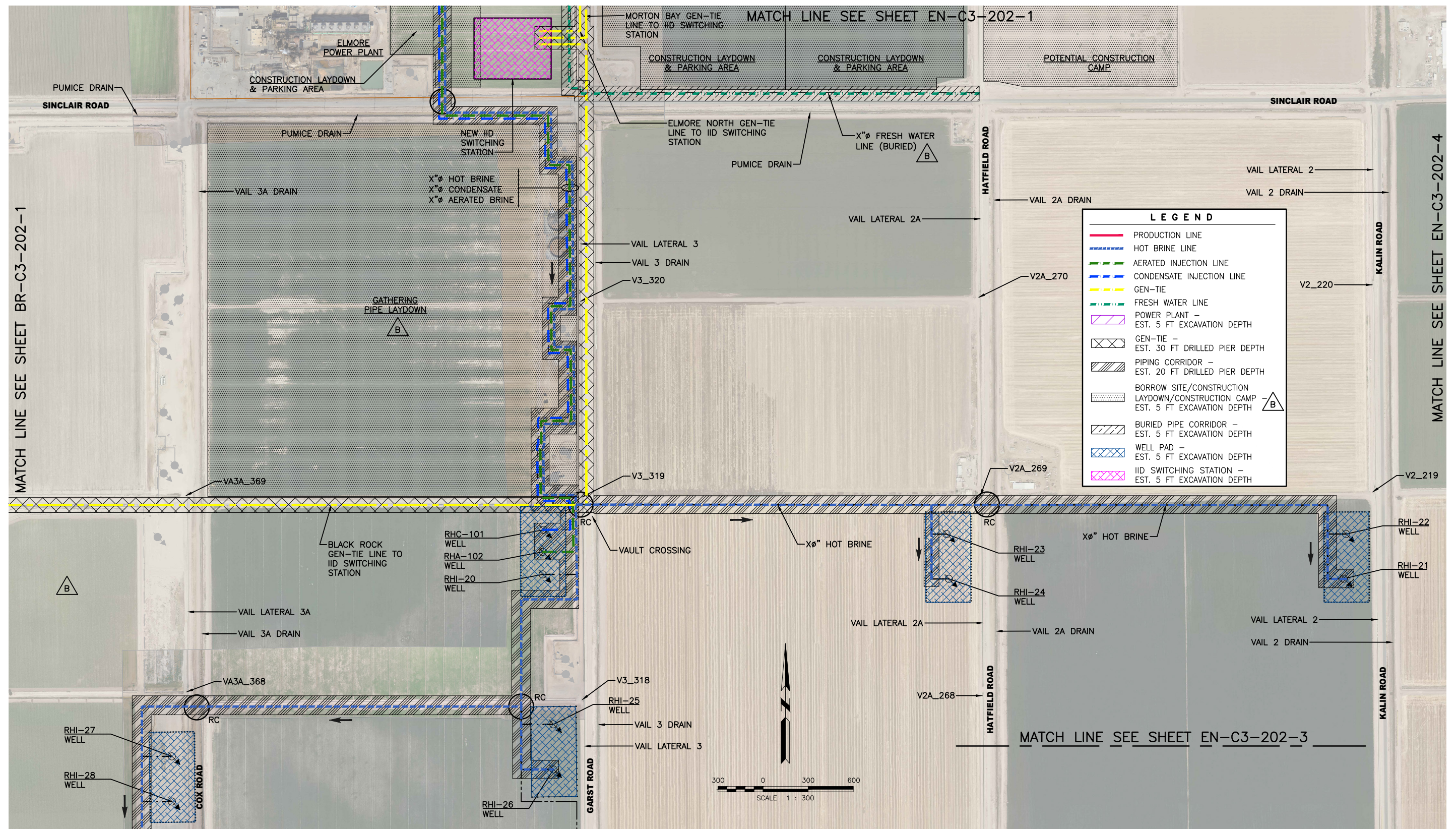






**Figure 2-7a**  
**Depth of Excavation,**  
**Elmore North Geothermal Project**  
 Imperial County, California





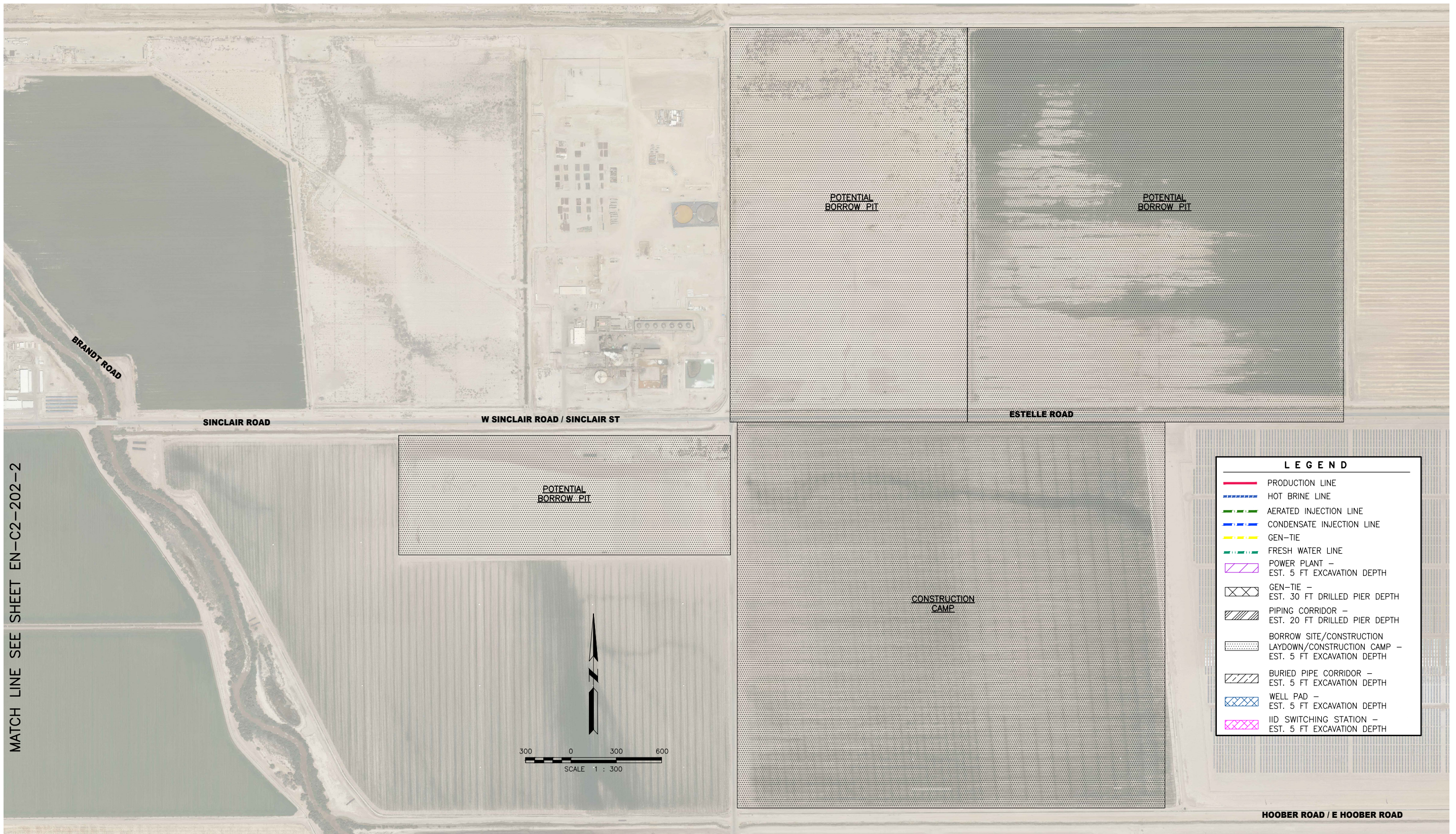
**Figure 2-7b**  
**Depth of Excavation,**  
**Elmore North Geothermal Project**  
Imperial County, California





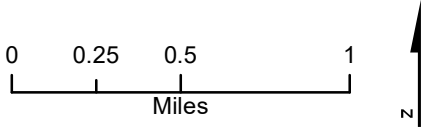
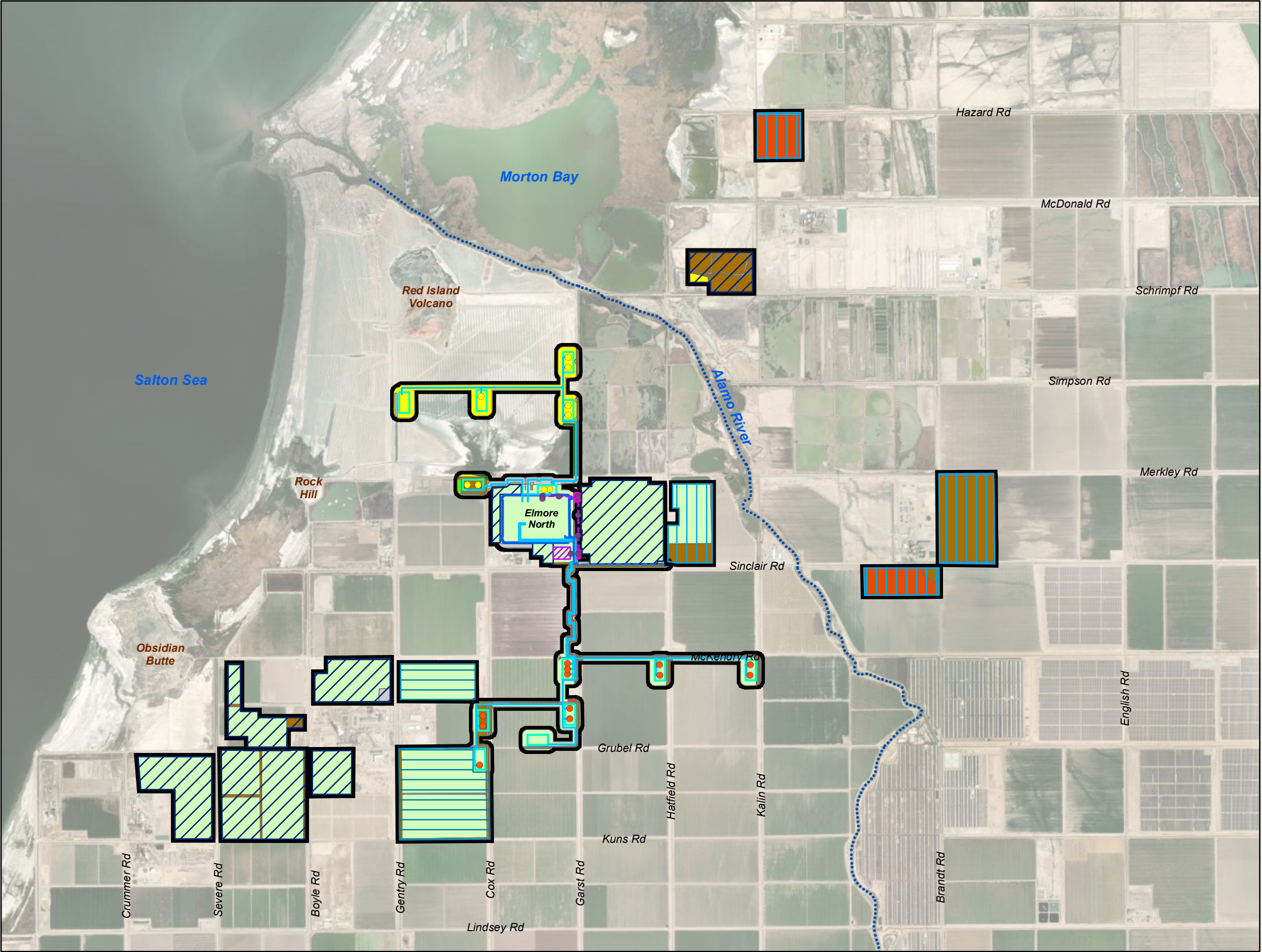
**Figure 2-7c**  
**Depth of Excavation,**  
**Elmore North Geothermal Project**  
 Imperial County, California





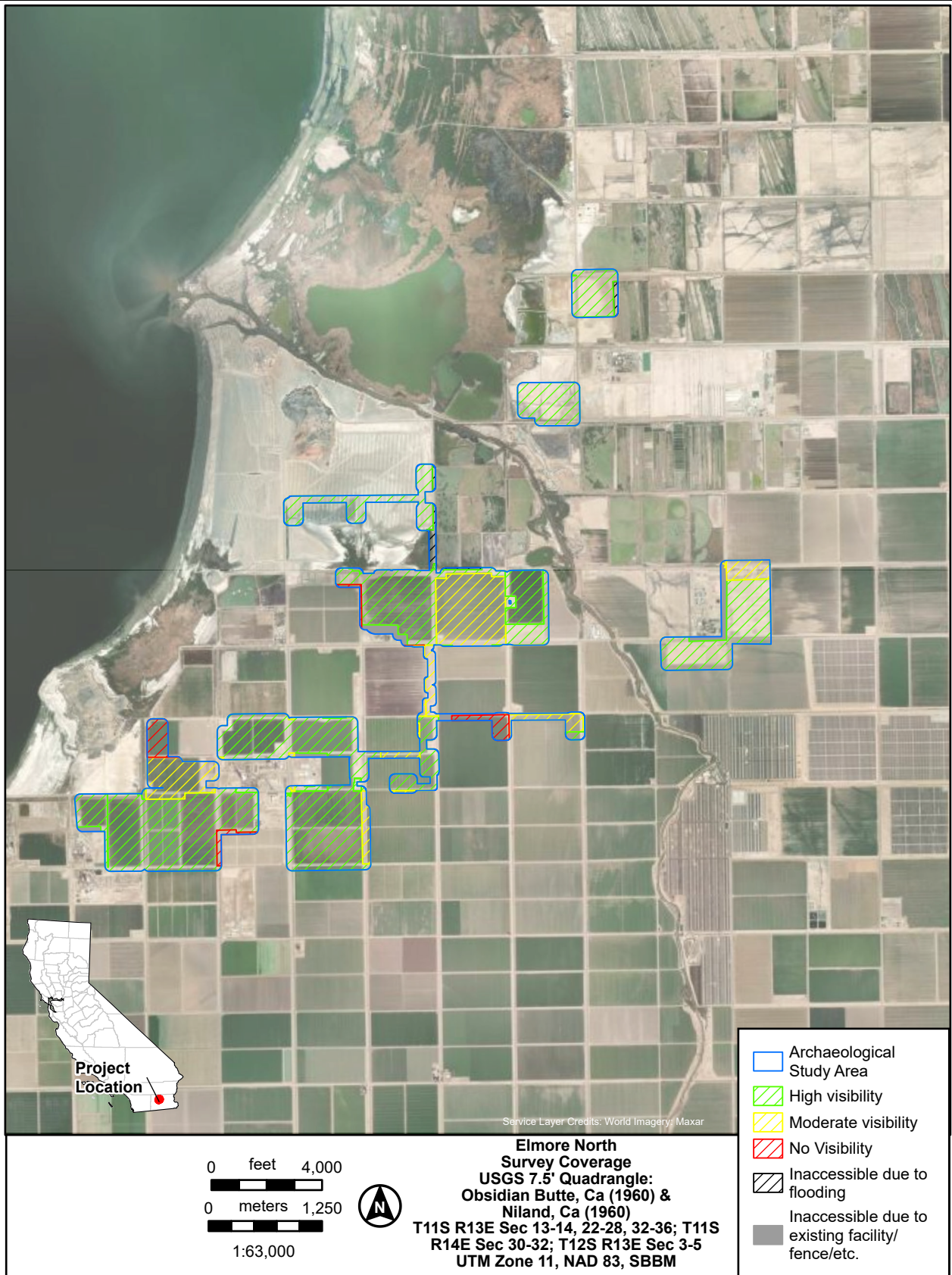
**Figure 2-7d**  
**Depth of Excavation,**  
**Elmore North Geothermal Project**  
 Imperial County, California





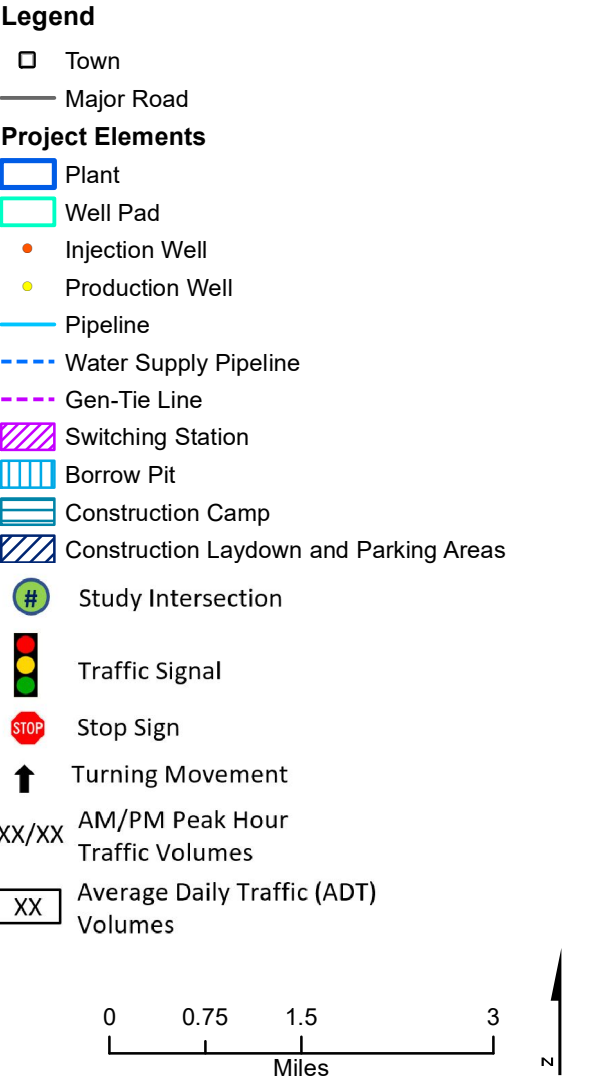
**Figure DRR 25**  
**Land Cover and Vegetation Types**  
**Elmore North Geothermal Project**  
Imperial County, California





**Figure DR 31**  
**Archaeological Survey Map,**  
**Elmore North Geothermal Project**  
Imperial County, California





**Figure DRR 84**  
**Construction Project AM, PM,**  
**and ADT Volume**  
**Elmore North Geothermal Project**  
Imperial County, California