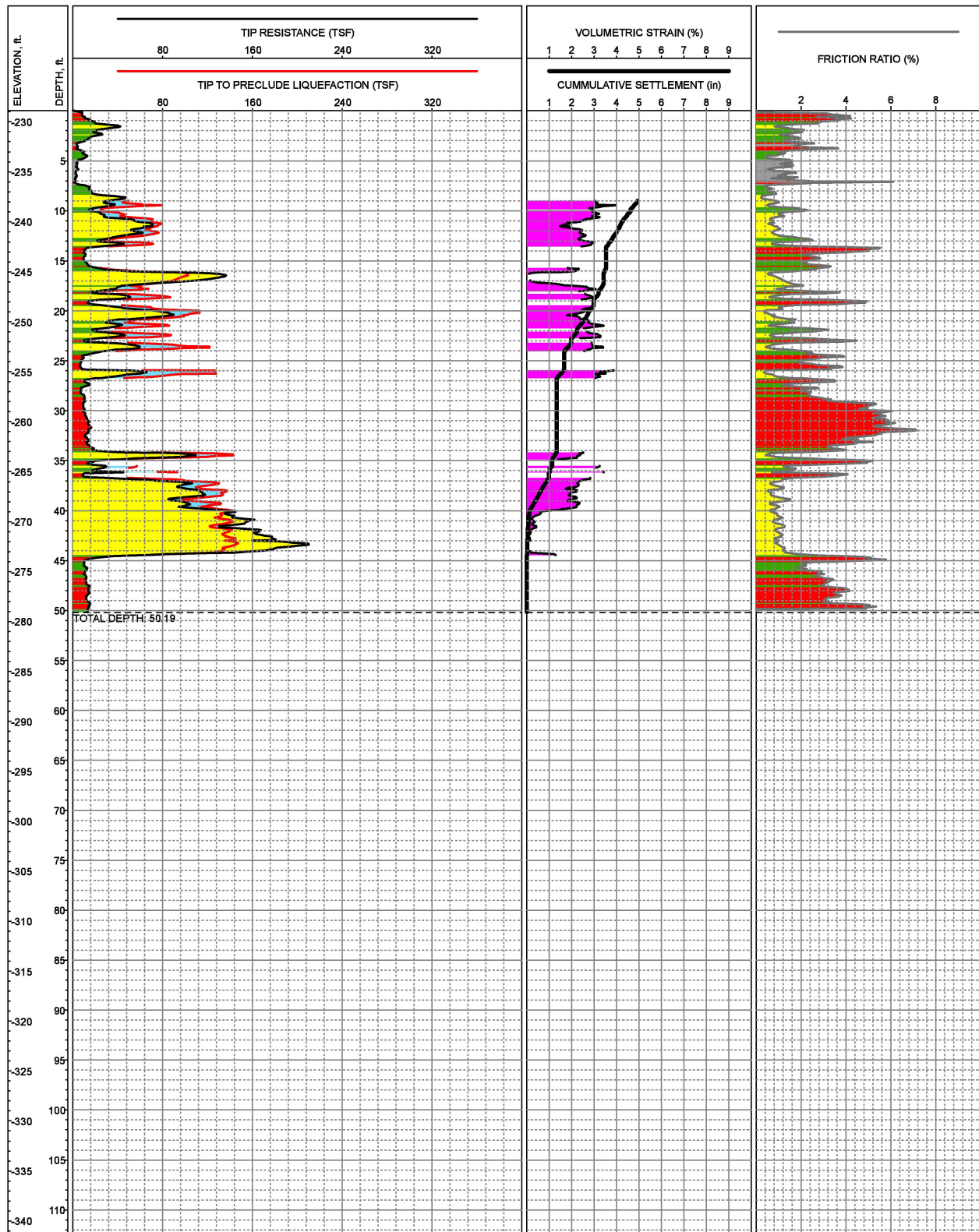


<b>DOCKETED</b>	
<b>Docket Number:</b>	23-AFC-02
<b>Project Title:</b>	Elmore North Geothermal Project (ENGP)
<b>TN #:</b>	252490-9
<b>Document Title:</b>	Elmore North Geothermal Project Data Request Response Set 1 Part 9
<b>Description:</b>	N/A
<b>Filer:</b>	Jerry Salamy
<b>Organization:</b>	Jacobs
<b>Submitter Role:</b>	Applicant Consultant
<b>Submission Date:</b>	10/2/2023 7:50:34 PM
<b>Docketed Date:</b>	10/3/2023



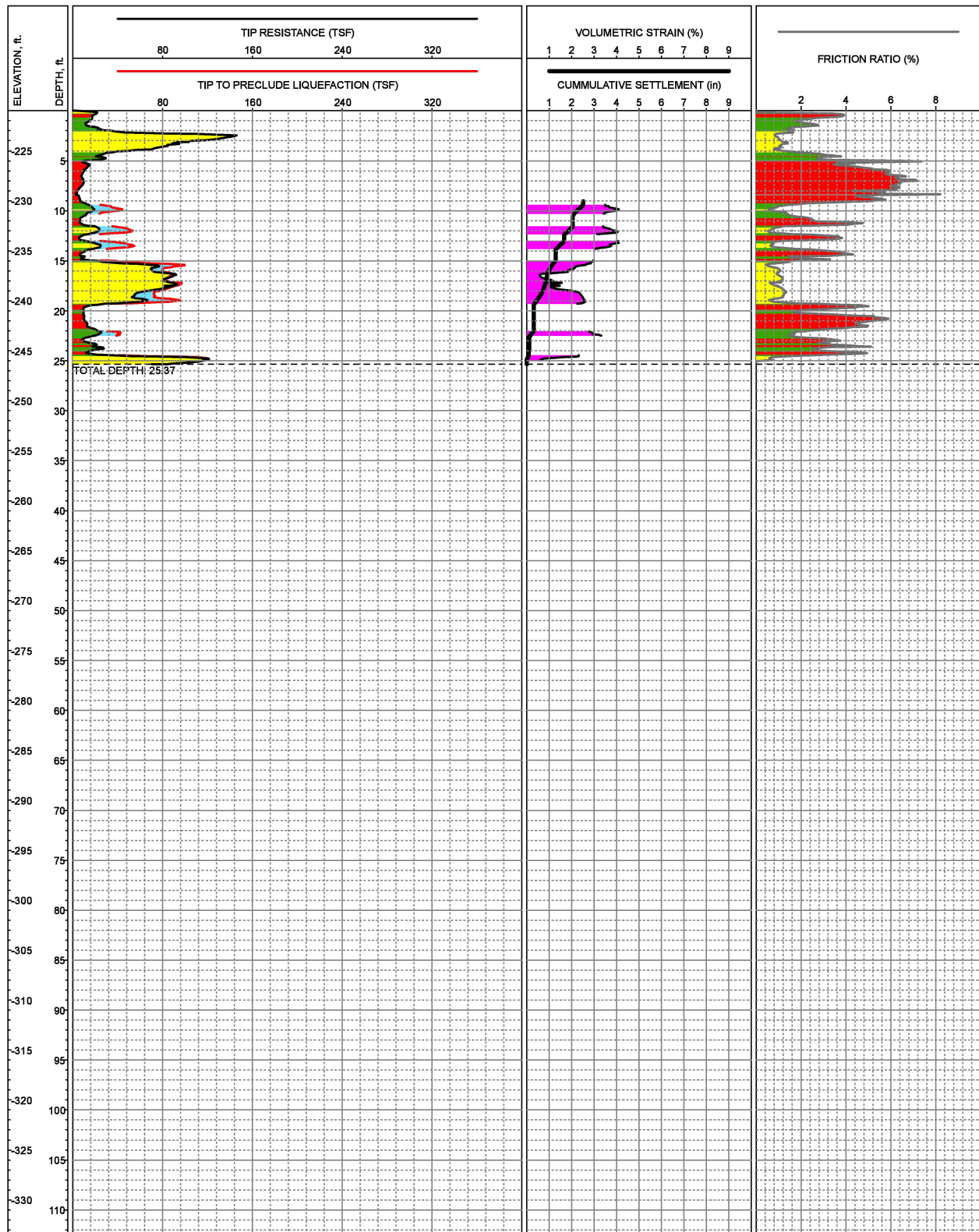
LOCATION: E6,752,117, N2,005,697, CA State Plane, Zone 6, NAD83, Feet  
 SURFACE EL: -228.9ft +/- (NAVD88)  
 COMPLETION DEPTH: 50.19ft  
 TESTDATE: 10/8/2008

EXPLORATION METHOD: Cone Penetrometer  
 PERFORMED BY: Kehoe Testing & Engineering  
 REVIEWED BY: Jon Everett

**LIQUEFACTION LOG OF CPT NO: C-102**  
 P.G.A. = 0.40g and Mw = 6.5  
 Black Rock Units 1, 2 & 3  
 Calipatria, California

FIGURE C-3

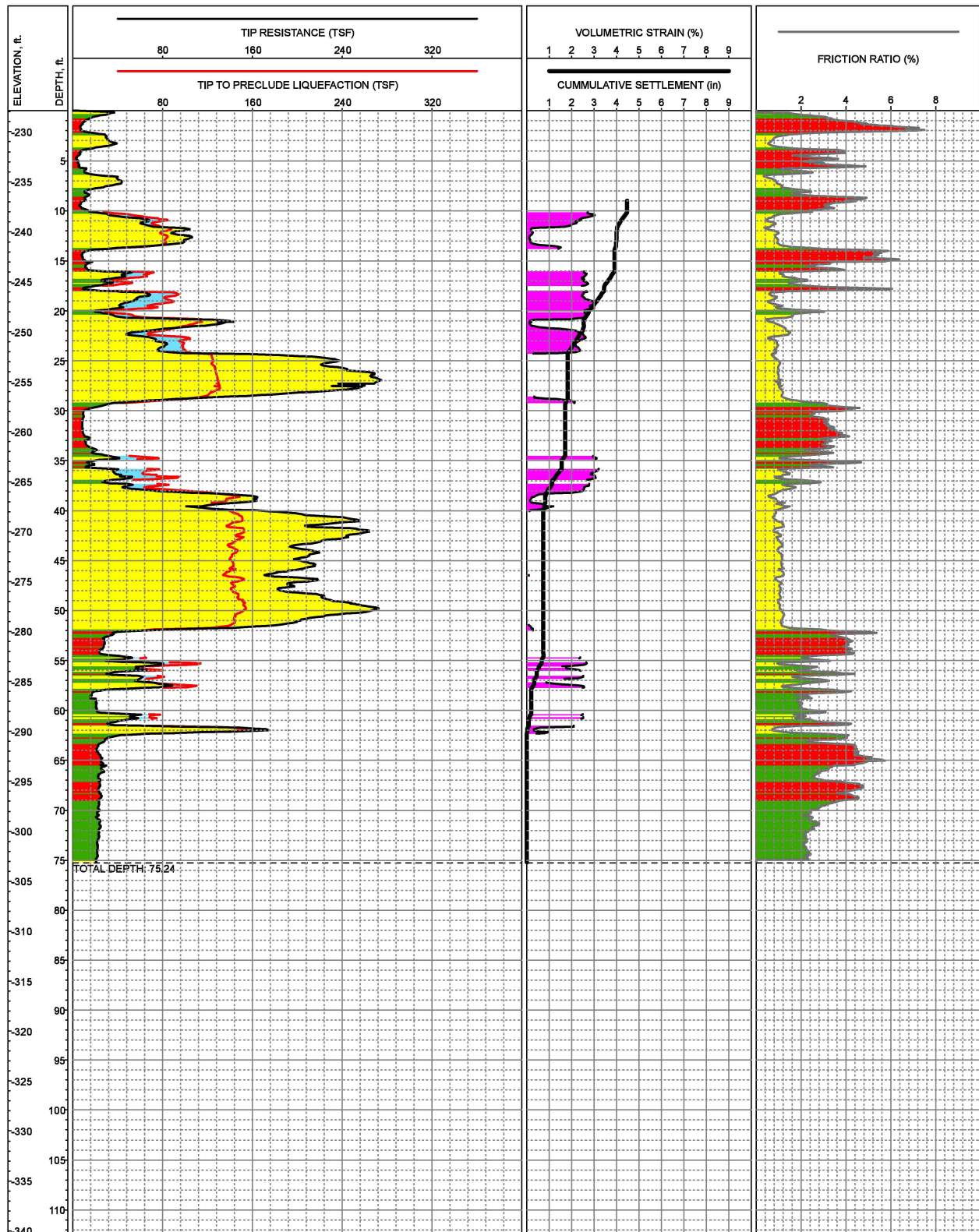
N:\Projects\3652\_CalEnergy\3652-001\_Black\_Rock\_Explorations\CPT\2008\Logs\Logs\_BlackRock123\_Liqu\_2008\_12\_18\MXD\Logs\_BlackRock123\_Liqu\_2008\_12\_18.mxd 01/16/2009, CDean



LOCATION: E6,750,954, N2,004,791, CA State Plane, Zone 6, NAD83, Feet  
 SURFACE EL: -221.0ft +/- (NAVD88)  
 COMPLETION DEPTH: 25.37ft  
 TESTDATE: 10/8/2008

EXPLORATION METHOD: Cone Penetrometer  
 PERFORMED BY: Kehoe Testing & Engineering  
 REVIEWED BY: Jon Everett

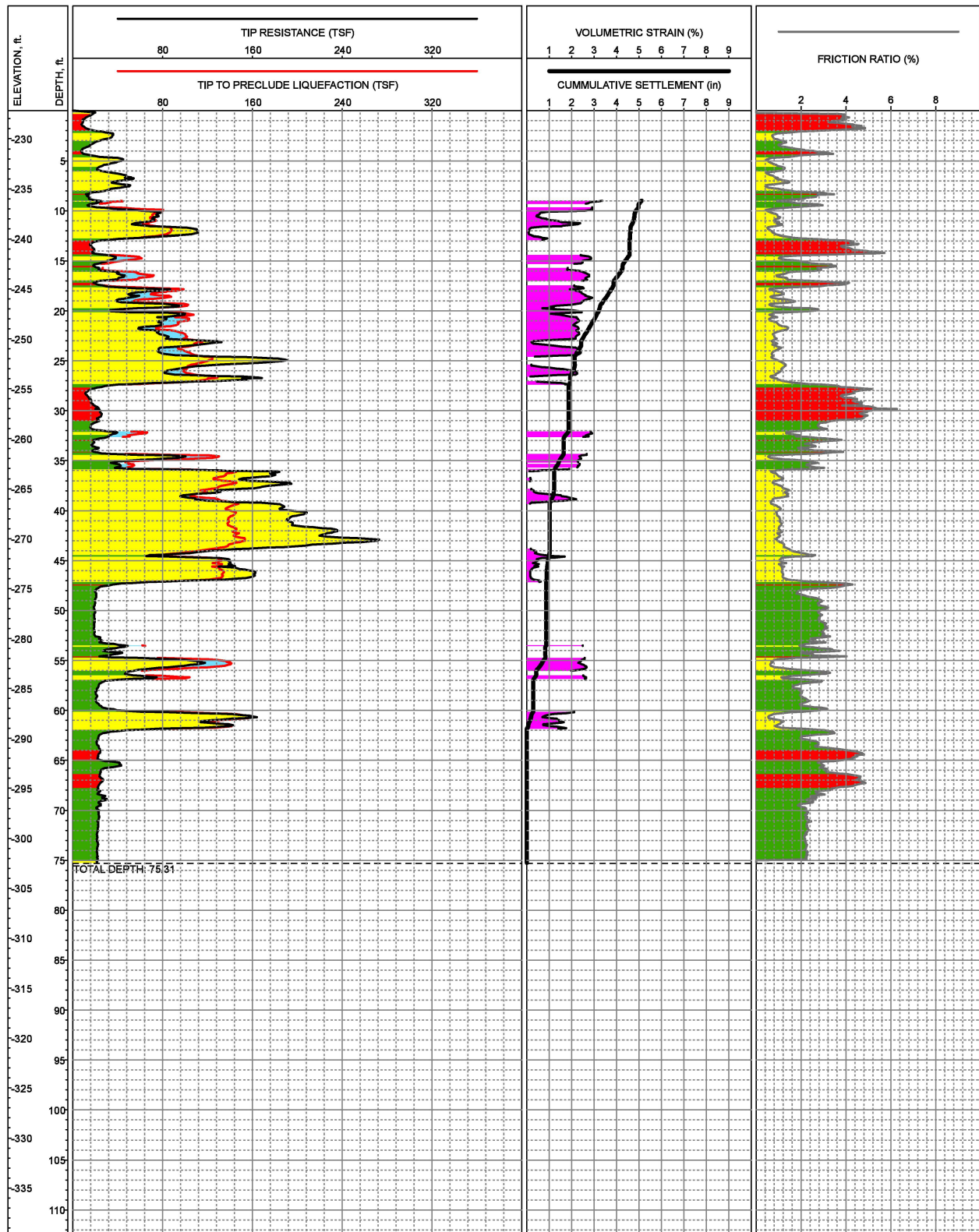
**LIQUEFACTION LOG OF CPT NO: C-103**  
 P.G.A. = 0.40g and Mw = 6.5  
 Black Rock Units 1, 2 & 3  
 Calipatria, California



LOCATION: E6,752,229, N2,004,966, CA State Plane, Zone 6, NAD83, Feet  
 SURFACE EL: -227.9ft +/- (NAVD88)  
 COMPLETION DEPTH: 75.24ft  
 TESTDATE: 10/7/2008

EXPLORATION METHOD: Cone Penetrometer  
 PERFORMED BY: Kehoe Testing & Engineering  
 REVIEWED BY: Jon Everett

**LIQUEFACTION LOG OF CPT NO: C-104**  
 P.G.A. = 0.40g and Mw = 6.5  
 Black Rock Units 1, 2 & 3  
 Calipatria, California

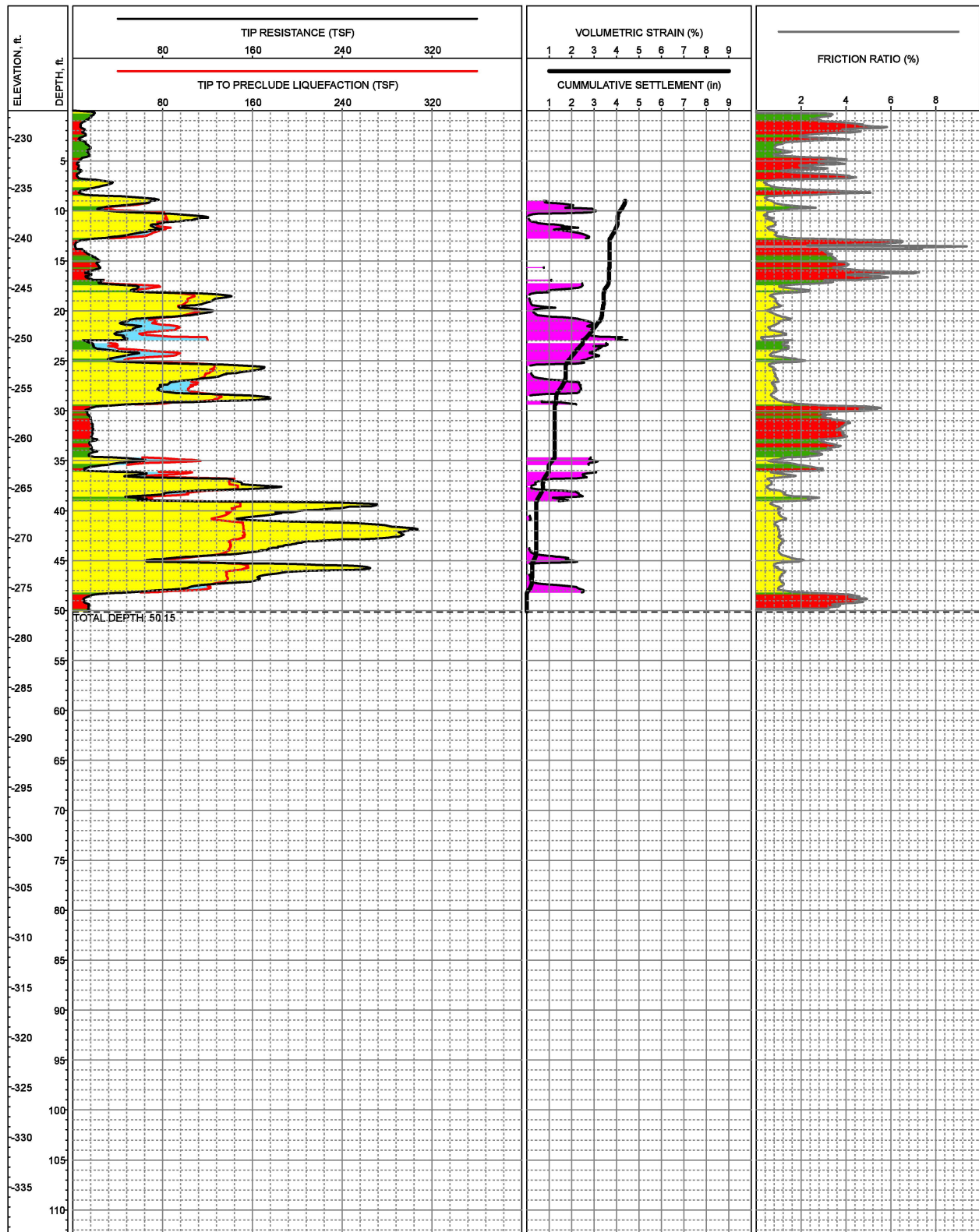


LOCATION: E6,752,401, N2,004,829, CA State Plane, Zone 6, NAD83, Feet  
 SURFACE EL: -227.2ft +/- (NAVD88)  
 COMPLETION DEPTH: 75.31ft  
 TESTDATE: 10/7/2008

EXPLORATION METHOD: Cone Penetrometer  
 PERFORMED BY: Kehoe Testing & Engineering  
 REVIEWED BY: Jon Everett

**LIQUEFACTION LOG OF CPT NO: C-105**  
 P.G.A. = 0.40g and Mw = 6.5  
 Black Rock Units 1, 2 & 3  
 Calipatria, California

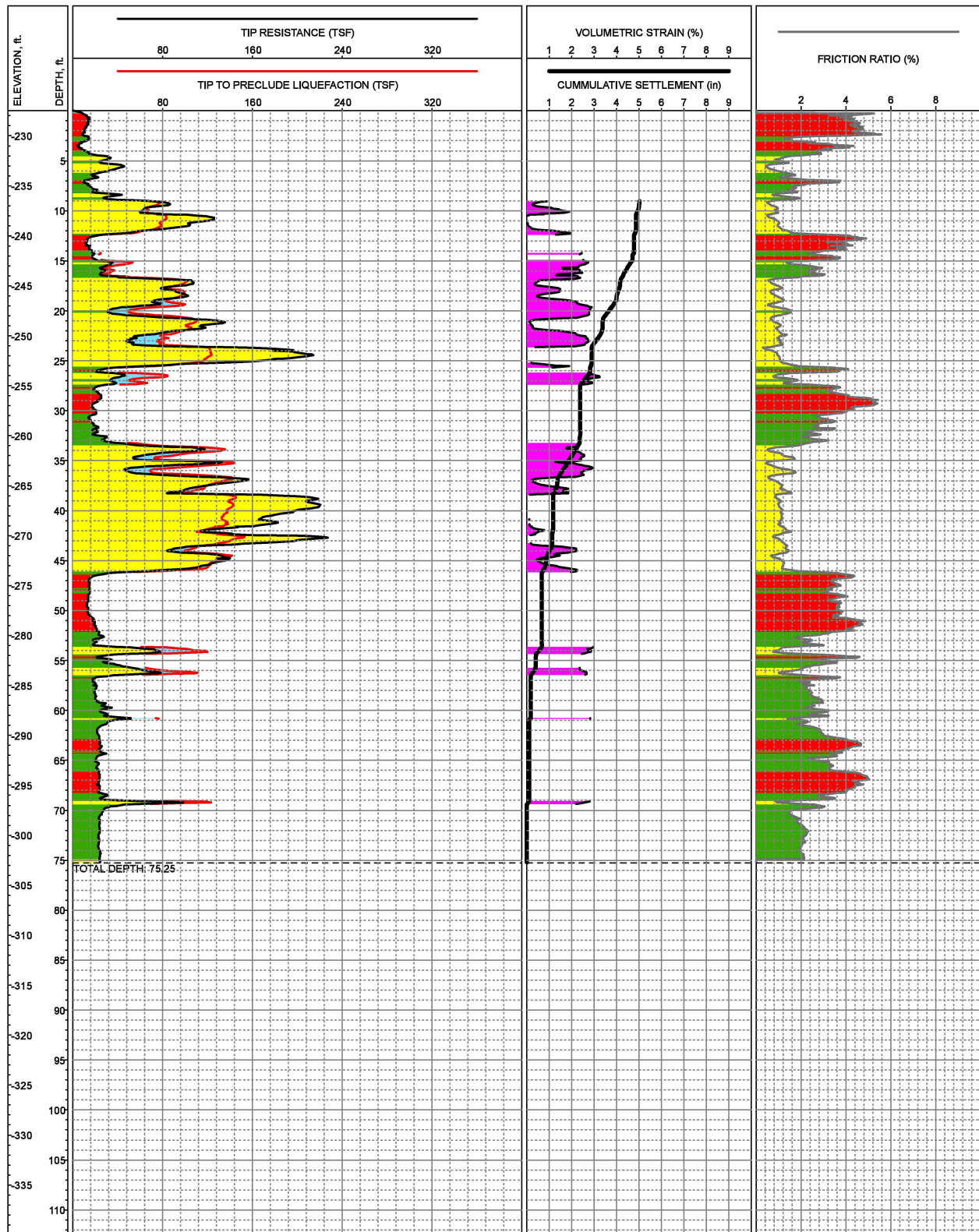
FIGURE C-6



LOCATION: E6,751,827, N2,004,673, CA State Plane, Zone 6, NAD83, Feet  
 SURFACE EL: -227.3ft +/- (NAVD88)  
 COMPLETION DEPTH: 50.15ft  
 TESTDATE: 10/7/2008

EXPLORATION METHOD: Cone Penetrometer  
 PERFORMED BY: Kehoe Testing & Engineering  
 REVIEWED BY: Jon Everett

**LIQUEFACTION LOG OF CPT NO: C-106**  
 P.G.A. = 0.40g and Mw = 6.5  
 Black Rock Units 1, 2 & 3  
 Calipatria, California



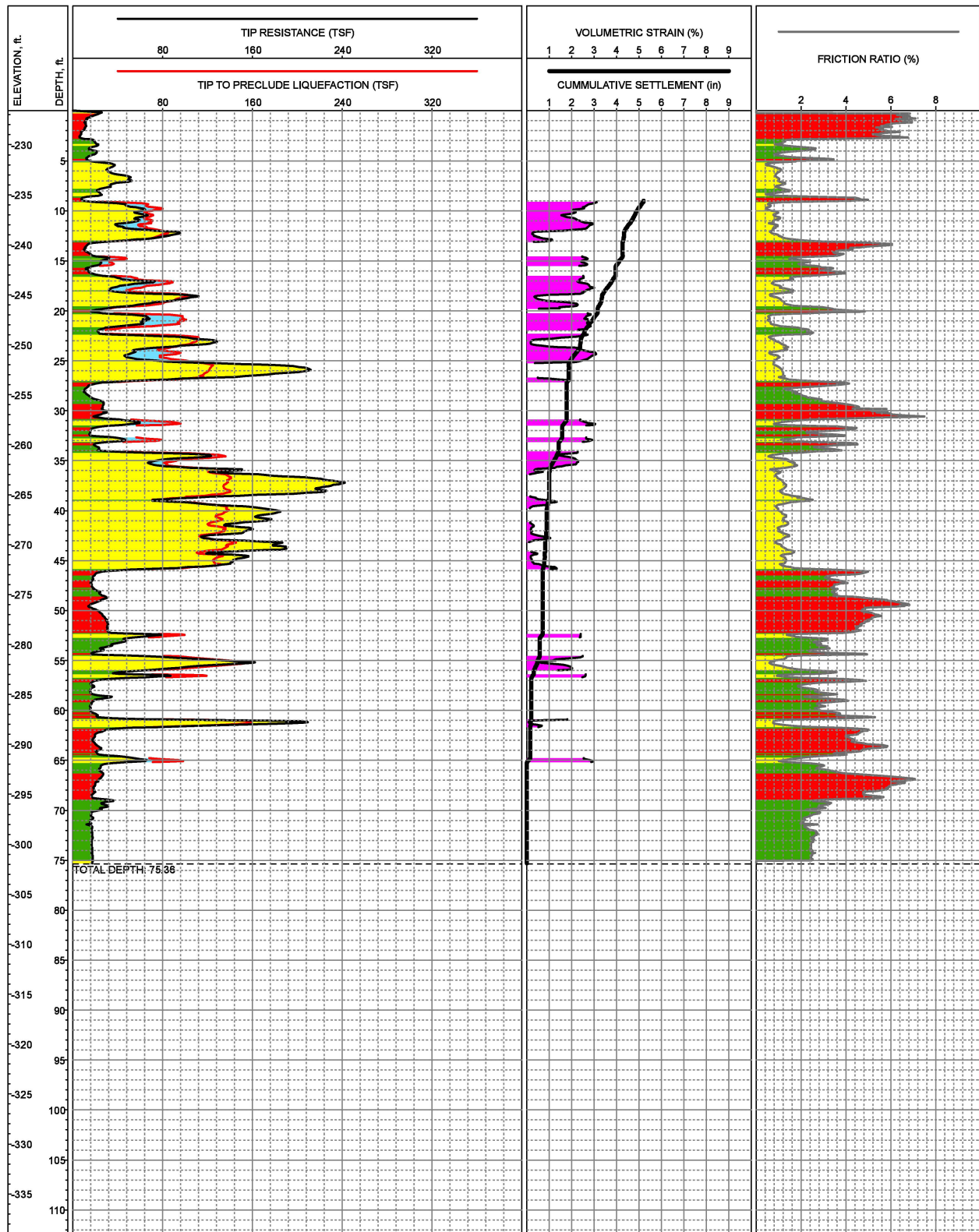
LOCATION: E6,752,273, N2,004,748, CA State Plane, Zone 6, NAD83, Feet  
 SURFACE EL: -227.5ft +/- (NAVD88)  
 COMPLETION DEPTH: 75.25ft  
 TESTDATE: 10/7/2008

EXPLORATION METHOD: Cone Penetrometer  
 PERFORMED BY: Kehoe Testing & Engineering  
 REVIEWED BY: Jon Everett

**LIQUEFACTION LOG OF CPT NO: C-107**  
 P.G.A. = 0.40g and  $M_w = 6.5$   
 Black Rock Units 1, 2 & 3  
 Calipatria, California

FIGURE C-8

N:\Projects\3652-CalEnergy\3652-001\_Black\_Rock\_Explorations\CPT\2008\Logs\Logs\_BlackRock123\_Liqu\_2008\_12\_18\MXD\Logs\_BlackRock123\_Liqu\_2008\_12\_18.mxd 01/16/2009, CDean

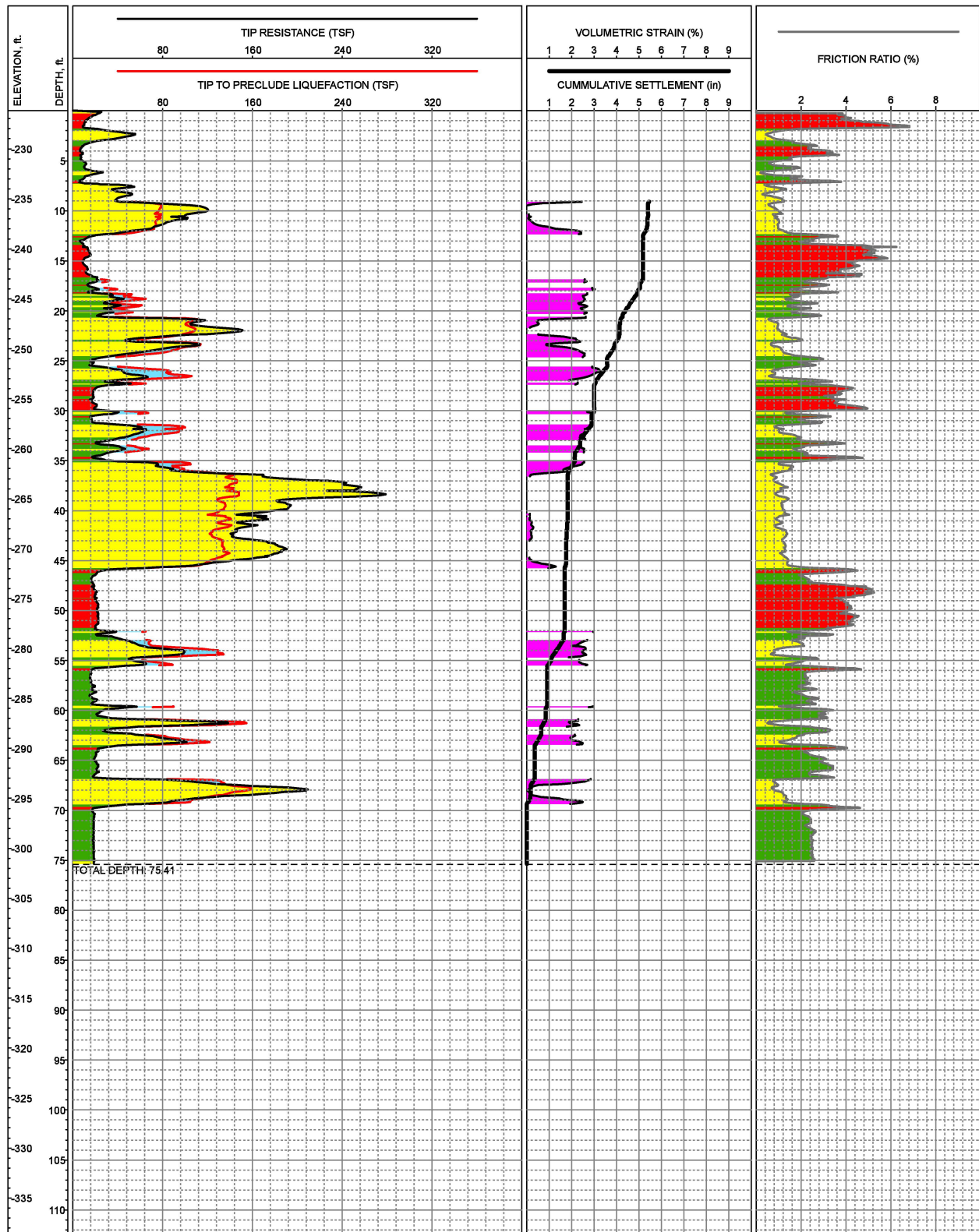


LOCATION: E6,752,567, N2,004,655, CA State Plane, Zone 6, NAD83, Feet  
 SURFACE EL: -226.6ft +/- (NAVD88)  
 COMPLETION DEPTH: 75.36ft  
 TESTDATE: 10/7/2008

EXPLORATION METHOD: Cone Penetrometer  
 PERFORMED BY: Kehoe Testing & Engineering  
 REVIEWED BY: Jon Everett

**LIQUEFACTION LOG OF CPT NO: C-108**  
 P.G.A. = 0.40g and  $M_w = 6.5$   
 Black Rock Units 1, 2 & 3  
 Calipatria, California



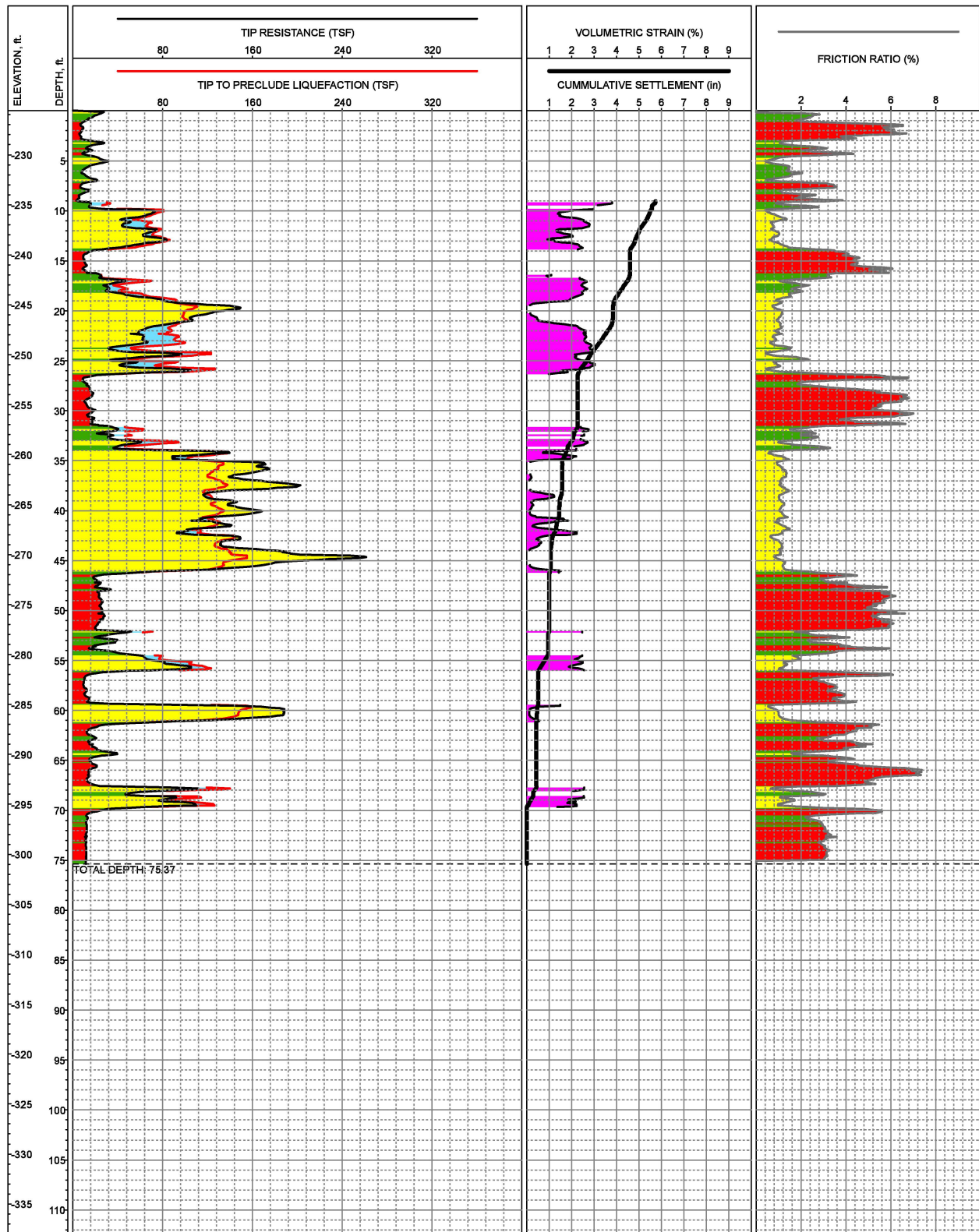


LOCATION: E6,751,740, N2,004,265, CA State Plane, Zone 6, NAD83, Feet  
 SURFACE EL: -226.2ft +/- (NAVD88)  
 COMPLETION DEPTH: 75.41ft  
 TESTDATE: 10/8/2008

EXPLORATION METHOD: Cone Penetrometer  
 PERFORMED BY: Kehoe Testing & Engineering  
 REVIEWED BY: Jon Everett

**LIQUEFACTION LOG OF CPT NO: C-109**  
 P.G.A. = 0.40g and  $M_w = 6.5$   
 Black Rock Units 1, 2 & 3  
 Calipatria, California

FIGURE C-10



LOCATION: E6,752,361, N2,004,312, CA State Plane, Zone 6, NAD83, Feet  
 SURFACE EL: -225.6ft +/- (NAVD88)  
 COMPLETION DEPTH: 75.37ft  
 TESTDATE: 10/9/2008

EXPLORATION METHOD: Cone Penetrometer  
 PERFORMED BY: Kehoe Testing & Engineering  
 REVIEWED BY: Jon Everett

**LIQUEFACTION LOG OF CPT NO: C-110**  
 P.G.A. = 0.40g and  $M_w = 6.5$   
 Black Rock Units 1, 2 & 3  
 Calipatria, California

FIGURE C-11