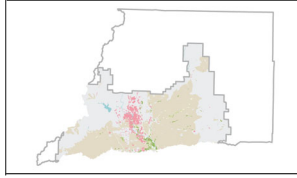


DOCKETED

Docket Number:	23-OPT-01
Project Title:	Fountain Wind Project
TN #:	250706
Document Title:	LU-009_shasta_county_FMMP_Metadata
Description:	N/A
Filer:	Caitlin Barns
Organization:	Stantec Consulting Services, Inc.
Submitter Role:	Applicant Consultant
Submission Date:	6/21/2023 4:01:03 PM
Docketed Date:	6/21/2023

2018 Shasta County Important Farmland

File Geodatabase Feature Class and REST service



Tags

California Important Farmland, Shasta County.

Summary

The Farmland Mapping and Monitoring Program (FMMP) provides data to decision makers for use in planning the present and future use of California's agricultural land resources. The data is a current inventory of agricultural resources for general planning purposes and has a minimum mapping unit of ten acres.

Description

Established in 1982, Government Code Section 65570 mandates FMMP to report biennially on even numbered years, the conversion of farmland and grazing land, and to provide maps and data to local government and the public. The Important Farmland survey area is based on Natural Resources Conservation Service (NRCS) modern soil surveys covering most non-governmental lands in California; 51 counties are fully or partially surveyed during the 2018 map update. Soil surveys specific to National Forests or other government land units are not surveyed. Beginning in 2002, SSURGO digital soil information was incorporated into the Shasta County Important Farmland data and the 2016 data began to incorporate the new NRCS Gridded Soil Survey (gSSURGO). Data subsequent to 2002 may have acreage and soil line differences due to incorporation of newer NRCS-SSURGO or gSSURGO editions.

Prior to the availability of SSURGO or gSSURGO, soil information was hand-transferred from the paper soil surveys. Older versions of the data have not been modified. The land use minimum mapping unit of ten acres has not changed, but digital soil units of less than one acre occur in the gSSURGO-enhanced Important Farmland data. The data between 2002 and 2014 incorporates SSURGO and the interaction of land use and soil components resulted in units of less than ten acres for categories such as Other Land. The 2016 data incorporates gSSURGO and will no longer merge resulting polygons less than one acre for any map category for that and future updates. For more information on gSSURGO, contact the USDA-Natural Resources Conservation Service: <https://www.nrcs.usda.gov>

USDA NRCS soil survey CA607 (Shasta Area).

Shasta County initial mapping year - 1984.

Geodetic Model: 1984 to 2012 - North American Datum of 1927; 2014 to 2018 - North American Datum of 1983.

2018 county boundaries: California Department of Forestry and Fire Protection, Fire and Resource Assessment Program (FRAP) 2018 version (cnty 18_2) of California Counties GIS data. <https://frap.fire.ca.gov>

2018 Imagery source: USDA Farm Service Agency - National Agricultural Imagery Program (NAIP); Summer 2018; True color; 1 meter resolution. <https://www.fsa.usda.gov>

Google Incorporated; Various dates; True color; Google Maps and Streetview. <https://www.google.com/maps>

Credits

A citation for the Farmland Mapping and Monitoring Program on any map products, graphic media, or data analyses based on the data is appreciated.

Use limitations

This data does not reflect general plan or zoning designations, city limit lines, changing economic or market conditions, or other factors which may be taken into consideration when land use policies are determined. This data is not designed to be used for parcel specific planning purposes due to its scale and the size of the minimum mapping unit (10 acres).

Extent

West -121.892215 **East** -121.755116
North 40.887801 **South** 40.761594

Scale Range

Maximum (zoomed in) 1:5,000
Minimum (zoomed out) 1:150,000,000

ArcGIS Metadata ►

Topics and Keywords ►

THEMES OR CATEGORIES OF THE RESOURCE farming, geoscientificInformation

* CONTENT TYPE Downloadable Data
EXPORT TO FGDC CSDGM XML FORMAT AS RESOURCE DESCRIPTION No

PLACE KEYWORDS Sacramento Valley, Shasta

THEME KEYWORDS Farmland, California Farmland, Farmland Monitoring, Urbanization, Land Use, Agriculture, Conservation, Prime Farmland, FMMP, Important Farmland, Shasta

[Hide Topics and Keywords ▲](#)

Citation ►

TITLE 2018 Shasta County Important Farmland

PRESENTATION FORMATS digital map
FGDC GEOSPATIAL PRESENTATION FORMAT vector digital data

[Hide Citation ▲](#)

Citation Contacts ►

RESPONSIBLE PARTY
INDIVIDUAL'S NAME Farmland Mapping and Monitoring Program
ORGANIZATION'S NAME California Department of Conservation, Division of Land Resource Protection
CONTACT'S ROLE originator

CONTACT INFORMATION ►

PHONE
VOICE (916) 324-0850

ADDRESS
TYPE both
DELIVERY POINT 715 P Street MS 1904
CITY Sacramento
ADMINISTRATIVE AREA California
POSTAL CODE 95814
E-MAIL ADDRESS fmmp@conservation.ca.gov

[Hide Contact information ▲](#)

[Hide Citation Contacts ▲](#)

Resource Details ►

DATASET LANGUAGES English (UNITED STATES)
DATASET CHARACTER SET utf8 - 8 bit UCS Transfer Format

SPATIAL REPRESENTATION TYPE vector

PROCESSING ENVIRONMENT Microsoft Windows 7 Version 6.1 (Build 7601) Service Pack 1; Esri ArcGIS 10.1.1.3143

CREDITS
A citation for the Farmland Mapping and Monitoring Program on any map products, graphic media, or data analyses based on the data is appreciated.

ARCGIS ITEM PROPERTIES
* NAME ShastaCo_CalifImportantFarmland2018_1mileBuffer_Clip
* LOCATION file:///\\US0241-PPFSS01\WORKGROUP\1956\active_Task Owner and other Non-BC1956 Jobs\185703743\03_data\gis_cad\gis\mxd\2023\Calcs and Data\LU-02_LandUse.gdb
* ACCESS PROTOCOL Local Area Network

[Hide Resource Details ▲](#)

Extents ►

EXTENT
GEOGRAPHIC EXTENT
BOUNDING RECTANGLE
EXTENT TYPE Extent used for searching
* WEST LONGITUDE -121.892215
* EAST LONGITUDE -121.755116
* NORTH LATITUDE 40.887801
* SOUTH LATITUDE 40.761594
* EXTENT CONTAINS THE RESOURCE Yes

EXTENT IN THE ITEM'S COORDINATE SYSTEM
* WEST LONGITUDE -159533.234800
* EAST LONGITUDE -148227.056500

* SOUTH LATITUDE 306626.208900
 * NORTH LATITUDE 320421.641400
 * EXTENT CONTAINS THE RESOURCE Yes

[Hide Extents ▲](#)

Resource Points of Contact ►

POINT OF CONTACT

INDIVIDUAL'S NAME Farmland Mapping and Monitoring Program
 ORGANIZATION'S NAME California Department of Conservation, Division of Land Resource Protection
 CONTACT'S ROLE originator

CONTACT INFORMATION ►

PHONE
 VOICE (916) 324-0850

ADDRESS
 TYPE both
 DELIVERY POINT 715 P Street MS 1904
 CITY Sacramento
 ADMINISTRATIVE AREA California
 POSTAL CODE 95814
 E-MAIL ADDRESS fmmp@conservation.ca.gov

[Hide Contact information ▲](#)

[Hide Resource Points of Contact ▲](#)

Resource Maintenance ►

RESOURCE MAINTENANCE

TIME PERIOD BETWEEN UPDATES
 TIME DURATION Biennial

[Hide Resource Maintenance ▲](#)

Resource Constraints ►

CONSTRAINTS

LIMITATIONS OF USE

This data does not reflect general plan or zoning designations, city limit lines, changing economic or market conditions, or other factors which may be taken into consideration when land use policies are determined. This data is not designed to be used for parcel specific planning purposes due to its scale and the size of the minimum mapping unit (10 acres).

LEGAL CONSTRAINTS

LIMITATIONS OF USE

The Department of Conservation makes no warranties as to the suitability of this data for any particular purpose.

[Hide Resource Constraints ▲](#)

Spatial Reference ►

ARCGIS COORDINATE SYSTEM

* TYPE Projected
 * GEOGRAPHIC COORDINATE REFERENCE GCS_North_American_1983
 * PROJECTION NAD_1983_California_Teale_Albers

* COORDINATE REFERENCE DETAILS

PROJECTED COORDINATE SYSTEM

WELL-KNOWN IDENTIFIER 3310
 X ORIGIN -16909700
 Y ORIGIN -8597000
 XY SCALE 10000
 Z ORIGIN -100000
 Z SCALE 10000
 M ORIGIN -100000
 M SCALE 10000
 XY TOLERANCE 0.001
 Z TOLERANCE 0.001
 M TOLERANCE 0.001
 HIGH PRECISION true

LATEST WELL-KNOWN IDENTIFIER 3310

WELL-KNOWN TEXT PROJCS["NAD_1983_California_Teale_Albers",GEOGCS["GCS_North_American_1983",DATUM["D_North_American_1983",SPHEROID["GRS_1980",6378137.0,298.257222101]],PRIMEM["Greenwich",0.0],UNIT["Degree",0.0174532925199433]],PROJECTION["Albers"],PARAMETER["False_Easting",0.0],PARAMETER["False_Northing",-4000000.0],PARAMETER["Central_Meridian",-120.0],PARAMETER["Standard_Parallel_1",34.0],PARAMETER

["Standard_Parallel_2",40.5],PARAMETER["Latitude_Of_Origin",0.0],UNIT["Meter",1.0],AUTHORITY["EPSG",3310]]

REFERENCE SYSTEM IDENTIFIER

* VALUE 3310
* CODESPACE EPSG
* VERSION 6.8(9.2.0)

[Hide Spatial Reference ▲](#)

Spatial Data Properties ►

VECTOR ►

* LEVEL OF TOPOLOGY FOR THIS DATASET geometry only

GEOMETRIC OBJECTS

FEATURE CLASS NAME ShastaCo_CalifImportantFarmland2018_1mileBuffer_Clip
* OBJECT TYPE composite
* OBJECT COUNT 10

[Hide Vector ▲](#)

ARCGIS FEATURE CLASS PROPERTIES ►

FEATURE CLASS NAME ShastaCo_CalifImportantFarmland2018_1mileBuffer_Clip
* FEATURE TYPE Simple
* GEOMETRY TYPE Polygon
* HAS TOPOLOGY FALSE
* FEATURE COUNT 10
* SPATIAL INDEX TRUE
* LINEAR REFERENCING FALSE

[Hide ArcGIS Feature Class Properties ▲](#)

[Hide Spatial Data Properties ▲](#)

Data Quality ►

SCOPE OF QUALITY INFORMATION ►

RESOURCE LEVEL dataset

[Hide Scope of quality information ▲](#)

[Hide Data Quality ▲](#)

Geoprocessing history ►

PROCESS

PROCESS NAME
DATE 2019-05-15 10:45:42
TOOL LOCATION c:\program files (x86)\arcgis\desktop10.4\ArcToolbox\Toolboxes\Data Management Tools.tbx\CalculateField
COMMAND ISSUED
CalculateField MUPOLYGON_ST NRCS_soil "p" VB #
INCLUDE IN LINEAGE WHEN EXPORTING METADATA No

PROCESS

PROCESS NAME
DATE 2019-05-15 16:01:01
TOOL LOCATION c:\program files (x86)\arcgis\desktop10.4\ArcToolbox\Toolboxes\Data Management Tools.tbx\CalculateField
COMMAND ISSUED
CalculateField MUPOLYGON_ST NRCS_soil "s" VB #
INCLUDE IN LINEAGE WHEN EXPORTING METADATA No

PROCESS

PROCESS NAME
DATE 2019-05-15 16:09:09
TOOL LOCATION c:\program files (x86)\arcgis\desktop10.4\ArcToolbox\Toolboxes\Data Management Tools.tbx\CalculateField
COMMAND ISSUED
CalculateField MUPOLYGON_ST NRCS_soil "u" VB #
INCLUDE IN LINEAGE WHEN EXPORTING METADATA No

PROCESS

PROCESS NAME
DATE 2019-05-16 09:07:43
TOOL LOCATION c:\program files (x86)\arcgis\desktop10.4\ArcToolbox\Toolboxes\Data Management Tools.tbx\CalculateField
COMMAND ISSUED
CalculateField MUPOLYGON_ST NRCS_soil "l" VB #
INCLUDE IN LINEAGE WHEN EXPORTING METADATA No

PROCESS

```
PROCESS NAME
DATE 2019-05-16 13:42:54
TOOL LOCATION c:\program files (x86)\arcgis\desktop10.4\ArcToolbox\Toolboxes\Data Management Tools.tbx\CalculateField
COMMAND ISSUED
CalculateField MUPOLYGON_ST NRCS_soil "n" VB #
INCLUDE IN LINEAGE WHEN EXPORTING METADATA No

PROCESS
PROCESS NAME
DATE 2019-05-16 15:01:49
TOOL LOCATION c:\program files (x86)\arcgis\desktop10.4\ArcToolbox\Toolboxes\Data Management Tools.tbx\CalculateField
COMMAND ISSUED
CalculateField MUPOLYGON_ST NRCS_soil "x" VB #
INCLUDE IN LINEAGE WHEN EXPORTING METADATA No

PROCESS
PROCESS NAME
DATE 2019-05-17 13:02:48
TOOL LOCATION c:\program files (x86)\arcgis\desktop10.4\ArcToolbox\Toolboxes\Data Management Tools.tbx\CalculateField
COMMAND ISSUED
CalculateField MUPOLYGON_ST NRCS_soil "n" VB #
INCLUDE IN LINEAGE WHEN EXPORTING METADATA No

PROCESS
PROCESS NAME
DATE 2019-05-17 13:04:53
TOOL LOCATION c:\program files (x86)\arcgis\desktop10.4\ArcToolbox\Toolboxes\Data Management Tools.tbx\CalculateField
COMMAND ISSUED
CalculateField MUPOLYGON_ST flclass "Not prime farmland" VB #
INCLUDE IN LINEAGE WHEN EXPORTING METADATA No

PROCESS
PROCESS NAME
DATE 2019-05-17 13:09:13
TOOL LOCATION c:\program files (x86)\arcgis\desktop10.4\ArcToolbox\Toolboxes\Data Management Tools.tbx\CalculateField
COMMAND ISSUED
CalculateField MUPOLYGON_ST flclass "Not prime farmland" VB #
INCLUDE IN LINEAGE WHEN EXPORTING METADATA No

PROCESS
PROCESS NAME
DATE 2019-05-17 13:10:20
TOOL LOCATION c:\program files (x86)\arcgis\desktop10.4\ArcToolbox\Toolboxes\Data Management Tools.tbx\CalculateField
COMMAND ISSUED
CalculateField MUPOLYGON_ST NRCS_soil "n" VB #
INCLUDE IN LINEAGE WHEN EXPORTING METADATA No

PROCESS
PROCESS NAME
DATE 2019-05-17 13:13:28
TOOL LOCATION c:\program files (x86)\arcgis\desktop10.4\ArcToolbox\Toolboxes\Data Management Tools.tbx\CalculateField
COMMAND ISSUED
CalculateField MUPOLYGON_ST NRCS_soil "n" VB #
INCLUDE IN LINEAGE WHEN EXPORTING METADATA No

PROCESS
PROCESS NAME
DATE 2019-05-17 13:14:38
TOOL LOCATION c:\program files (x86)\arcgis\desktop10.4\ArcToolbox\Toolboxes\Data Management Tools.tbx\CalculateField
COMMAND ISSUED
CalculateField MUPOLYGON_ST flclass "Not prime farmland" VB #
INCLUDE IN LINEAGE WHEN EXPORTING METADATA No

PROCESS
PROCESS NAME
DATE 2019-05-17 13:19:00
TOOL LOCATION c:\program files (x86)\arcgis\desktop10.4\ArcToolbox\Toolboxes\Data Management Tools.tbx\CalculateField
COMMAND ISSUED
CalculateField MUPOLYGON_ST flclass "Not prime farmland" VB #
INCLUDE IN LINEAGE WHEN EXPORTING METADATA No

PROCESS
PROCESS NAME
DATE 2019-05-17 13:19:30
TOOL LOCATION c:\program files (x86)\arcgis\desktop10.4\ArcToolbox\Toolboxes\Data Management Tools.tbx\CalculateField
COMMAND ISSUED
CalculateField MUPOLYGON_ST NRCS_soil "n" VB #
INCLUDE IN LINEAGE WHEN EXPORTING METADATA No

PROCESS
PROCESS NAME
DATE 2019-05-17 15:10:07
TOOL LOCATION c:\program files (x86)\arcgis\desktop10.4\ArcToolbox\Toolboxes\Data Management Tools.tbx\CalculateField
```

```
COMMAND ISSUED
  CalculateField MUPOLYGON_ST flclass "Not prime farmland" VB #
INCLUDE IN LINEAGE WHEN EXPORTING METADATA No

PROCESS
PROCESS NAME
DATE 2019-05-17 15:11:29
TOOL LOCATION c:\program files (x86)\arcgis\desktop10.4\ArcToolbox\Toolboxes\Data Management Tools.tbx\CalculateField
COMMAND ISSUED
  CalculateField MUPOLYGON_ST NRCS_soil "n" VB #
INCLUDE IN LINEAGE WHEN EXPORTING METADATA No

PROCESS
PROCESS NAME
DATE 2019-05-17 15:16:29
TOOL LOCATION c:\program files (x86)\arcgis\desktop10.4\ArcToolbox\Toolboxes\Data Management Tools.tbx\CalculateField
COMMAND ISSUED
  CalculateField MUPOLYGON_ST flclass "Not complete" VB #
INCLUDE IN LINEAGE WHEN EXPORTING METADATA No

PROCESS
PROCESS NAME
DATE 2019-05-17 15:48:18
TOOL LOCATION c:\program files (x86)\arcgis\desktop10.4\ArcToolbox\Toolboxes\Data Management Tools.tbx\CalculateField
COMMAND ISSUED
  CalculateField MUPOLYGON_ST flclass "Not prime farmland" VB #
INCLUDE IN LINEAGE WHEN EXPORTING METADATA No

PROCESS
PROCESS NAME
DATE 2019-05-17 15:49:20
TOOL LOCATION c:\program files (x86)\arcgis\desktop10.4\ArcToolbox\Toolboxes\Data Management Tools.tbx\CalculateField
COMMAND ISSUED
  CalculateField MUPOLYGON_ST NRCS_soil "n" VB #
INCLUDE IN LINEAGE WHEN EXPORTING METADATA No

PROCESS
PROCESS NAME
DATE 2019-05-17 15:54:47
TOOL LOCATION c:\program files (x86)\arcgis\desktop10.4\ArcToolbox\Toolboxes\Data Management Tools.tbx\CalculateField
COMMAND ISSUED
  CalculateField MUPOLYGON_ST NRCS_soil "n" VB #
INCLUDE IN LINEAGE WHEN EXPORTING METADATA No

PROCESS
PROCESS NAME
DATE 2019-05-17 15:55:41
TOOL LOCATION c:\program files (x86)\arcgis\desktop10.4\ArcToolbox\Toolboxes\Data Management Tools.tbx\CalculateField
COMMAND ISSUED
  CalculateField MUPOLYGON_ST flclass "Not prime farmland" VB #
INCLUDE IN LINEAGE WHEN EXPORTING METADATA No

PROCESS
PROCESS NAME
DATE 2019-05-17 15:59:51
TOOL LOCATION c:\program files (x86)\arcgis\desktop10.4\ArcToolbox\Toolboxes\Data Management Tools.tbx\CalculateField
COMMAND ISSUED
  CalculateField MUPOLYGON_ST flclass "Not prime farmland" VB #
INCLUDE IN LINEAGE WHEN EXPORTING METADATA No

PROCESS
PROCESS NAME
DATE 2019-05-17 16:00:36
TOOL LOCATION c:\program files (x86)\arcgis\desktop10.4\ArcToolbox\Toolboxes\Data Management Tools.tbx\CalculateField
COMMAND ISSUED
  CalculateField MUPOLYGON_ST NRCS_soil "n" VB #
INCLUDE IN LINEAGE WHEN EXPORTING METADATA No

PROCESS
PROCESS NAME
DATE 2019-05-17 16:04:18
TOOL LOCATION c:\program files (x86)\arcgis\desktop10.4\ArcToolbox\Toolboxes\Data Management Tools.tbx\CalculateField
COMMAND ISSUED
  CalculateField MUPOLYGON_ST flclass "Not complete" VB #
INCLUDE IN LINEAGE WHEN EXPORTING METADATA No

PROCESS
PROCESS NAME
DATE 2019-05-17 16:05:14
TOOL LOCATION c:\program files (x86)\arcgis\desktop10.4\ArcToolbox\Toolboxes\Data Management Tools.tbx\CalculateField
COMMAND ISSUED
  CalculateField MUPOLYGON_ST NRCS_soil "x" VB #
INCLUDE IN LINEAGE WHEN EXPORTING METADATA No
```

PROCESS
PROCESS NAME
DATE 2019-05-17 16:07:48
TOOL LOCATION c:\program files (x86)\arcgis\desktop10.4\ArcToolbox\Toolboxes\Data Management Tools.tbx\CalculateField
COMMAND ISSUED
CalculateField MUPOLYGON_ST flclass "Not complete" VB #
INCLUDE IN LINEAGE WHEN EXPORTING METADATA No

PROCESS
PROCESS NAME
DATE 2019-05-17 16:12:04
TOOL LOCATION c:\program files (x86)\arcgis\desktop10.4\ArcToolbox\Toolboxes\Data Management Tools.tbx\CalculateField
COMMAND ISSUED
CalculateField MUPOLYGON_ST flclass "Not prime farmland" VB #
INCLUDE IN LINEAGE WHEN EXPORTING METADATA No

PROCESS
PROCESS NAME
DATE 2019-05-17 16:12:33
TOOL LOCATION c:\program files (x86)\arcgis\desktop10.4\ArcToolbox\Toolboxes\Data Management Tools.tbx\CalculateField
COMMAND ISSUED
CalculateField MUPOLYGON_ST NRCS_soil "n" VB #
INCLUDE IN LINEAGE WHEN EXPORTING METADATA No

PROCESS
PROCESS NAME
DATE 2019-05-21 16:02:25
TOOL LOCATION c:\program files (x86)\arcgis\desktop10.4\ArcToolbox\Toolboxes\Data Management Tools.tbx\CalculateField
COMMAND ISSUED
CalculateField MUPOLYGON_ST flclass "Not prime farmland" VB #
INCLUDE IN LINEAGE WHEN EXPORTING METADATA No

PROCESS
PROCESS NAME
DATE 2019-05-21 16:03:20
TOOL LOCATION c:\program files (x86)\arcgis\desktop10.4\ArcToolbox\Toolboxes\Data Management Tools.tbx\CalculateField
COMMAND ISSUED
CalculateField MUPOLYGON_ST NRCS_soil "n" VB #
INCLUDE IN LINEAGE WHEN EXPORTING METADATA No

PROCESS
PROCESS NAME
DATE 2019-05-21 16:08:53
TOOL LOCATION c:\program files (x86)\arcgis\desktop10.4\ArcToolbox\Toolboxes\Data Management Tools.tbx\CalculateField
COMMAND ISSUED
CalculateField MUPOLYGON_ST NRCS_soil "n" VB #
INCLUDE IN LINEAGE WHEN EXPORTING METADATA No

PROCESS
PROCESS NAME
DATE 2019-05-21 16:10:02
TOOL LOCATION c:\program files (x86)\arcgis\desktop10.4\ArcToolbox\Toolboxes\Data Management Tools.tbx\CalculateField
COMMAND ISSUED
CalculateField MUPOLYGON_ST flclass "Not prime farmland" VB #
INCLUDE IN LINEAGE WHEN EXPORTING METADATA No

PROCESS
PROCESS NAME
DATE 2019-05-22 10:18:23
TOOL LOCATION c:\program files (x86)\arcgis\desktop10.4\ArcToolbox\Toolboxes\Data Management Tools.tbx\CalculateField
COMMAND ISSUED
CalculateField MUPOLYGON_ST flclass "Not prime farmland" VB #
INCLUDE IN LINEAGE WHEN EXPORTING METADATA No

PROCESS
PROCESS NAME
DATE 2019-05-22 10:19:41
TOOL LOCATION c:\program files (x86)\arcgis\desktop10.4\ArcToolbox\Toolboxes\Data Management Tools.tbx\CalculateField
COMMAND ISSUED
CalculateField MUPOLYGON_ST NRCS_soil "n" VB #
INCLUDE IN LINEAGE WHEN EXPORTING METADATA No

PROCESS
PROCESS NAME
DATE 2019-05-22 10:26:49
TOOL LOCATION c:\program files (x86)\arcgis\desktop10.4\ArcToolbox\Toolboxes\Data Management Tools.tbx\CalculateField
COMMAND ISSUED
CalculateField MUPOLYGON_ST flclass "Not complete" VB #
INCLUDE IN LINEAGE WHEN EXPORTING METADATA No

PROCESS
PROCESS NAME

DATE 2019-05-22 14:24:06
TOOL LOCATION c:\program files (x86)\arcgis\desktop10.4\ArcToolbox\Toolboxes\Data Management Tools.tbx\CalculateField
COMMAND ISSUED
CalculateField MUPOLYGON_ST flclass "Not complete" VB #
INCLUDE IN LINEAGE WHEN EXPORTING METADATA No

PROCESS
PROCESS NAME
DATE 2019-05-22 15:03:37
TOOL LOCATION c:\program files (x86)\arcgis\desktop10.4\ArcToolbox\Toolboxes\Data Management Tools.tbx\CalculateField
COMMAND ISSUED
CalculateField MUPOLYGON_ST flclass "Not prime farmland" VB #
INCLUDE IN LINEAGE WHEN EXPORTING METADATA No

PROCESS
PROCESS NAME
DATE 2019-05-22 15:04:46
TOOL LOCATION c:\program files (x86)\arcgis\desktop10.4\ArcToolbox\Toolboxes\Data Management Tools.tbx\CalculateField
COMMAND ISSUED
CalculateField MUPOLYGON_ST NRCS_soil "n" VB #
INCLUDE IN LINEAGE WHEN EXPORTING METADATA No

PROCESS
PROCESS NAME
DATE 2019-05-22 15:07:08
TOOL LOCATION c:\program files (x86)\arcgis\desktop10.4\ArcToolbox\Toolboxes\Data Management Tools.tbx\CalculateField
COMMAND ISSUED
CalculateField MUPOLYGON_ST flclass "Not complete" VB #
INCLUDE IN LINEAGE WHEN EXPORTING METADATA No

PROCESS
PROCESS NAME
DATE 2019-05-22 15:09:57
TOOL LOCATION c:\program files (x86)\arcgis\desktop10.4\ArcToolbox\Toolboxes\Data Management Tools.tbx\CalculateField
COMMAND ISSUED
CalculateField MUPOLYGON_ST flclass "Not complete" VB #
INCLUDE IN LINEAGE WHEN EXPORTING METADATA No

PROCESS
PROCESS NAME
DATE 2019-05-22 15:19:21
TOOL LOCATION c:\program files (x86)\arcgis\desktop10.4\ArcToolbox\Toolboxes\Data Management Tools.tbx\CalculateField
COMMAND ISSUED
CalculateField MUPOLYGON_ST flclass "Not prime farmland" VB #
INCLUDE IN LINEAGE WHEN EXPORTING METADATA No

PROCESS
PROCESS NAME
DATE 2019-05-22 15:20:21
TOOL LOCATION c:\program files (x86)\arcgis\desktop10.4\ArcToolbox\Toolboxes\Data Management Tools.tbx\CalculateField
COMMAND ISSUED
CalculateField MUPOLYGON_ST NRCS_soil "n" VB #
INCLUDE IN LINEAGE WHEN EXPORTING METADATA No

PROCESS
PROCESS NAME
DATE 2019-05-22 15:24:09
TOOL LOCATION c:\program files (x86)\arcgis\desktop10.4\ArcToolbox\Toolboxes\Data Management Tools.tbx\CalculateField
COMMAND ISSUED
CalculateField MUPOLYGON_ST flclass "Not complete" VB #
INCLUDE IN LINEAGE WHEN EXPORTING METADATA No

PROCESS
PROCESS NAME
DATE 2019-05-22 15:27:16
TOOL LOCATION c:\program files (x86)\arcgis\desktop10.4\ArcToolbox\Toolboxes\Data Management Tools.tbx\CalculateField
COMMAND ISSUED
CalculateField MUPOLYGON_ST flclass "Not prime farmland" VB #
INCLUDE IN LINEAGE WHEN EXPORTING METADATA No

PROCESS
PROCESS NAME
DATE 2019-05-22 15:29:56
TOOL LOCATION c:\program files (x86)\arcgis\desktop10.4\ArcToolbox\Toolboxes\Data Management Tools.tbx\CalculateField
COMMAND ISSUED
CalculateField MUPOLYGON_ST NRCS_soil "n" VB #
INCLUDE IN LINEAGE WHEN EXPORTING METADATA No

PROCESS
PROCESS NAME
DATE 2019-05-22 15:33:21
TOOL LOCATION c:\program files (x86)\arcgis\desktop10.4\ArcToolbox\Toolboxes\Data Management Tools.tbx\CalculateField
COMMAND ISSUED

```
CalculateField MUPOLYGON_ST flclass "Not complete" VB #
INCLUDE IN LINEAGE WHEN EXPORTING METADATA No

PROCESS
PROCESS NAME
DATE 2019-05-22 15:41:24
TOOL LOCATION c:\program files (x86)\arcgis\desktop10.4\ArcToolbox\Toolboxes\Data Management Tools.tbx\CalculateField
COMMAND ISSUED
CalculateField MUPOLYGON_ST flclass "Not prime farmland" VB #
INCLUDE IN LINEAGE WHEN EXPORTING METADATA No

PROCESS
PROCESS NAME
DATE 2019-05-22 15:42:21
TOOL LOCATION c:\program files (x86)\arcgis\desktop10.4\ArcToolbox\Toolboxes\Data Management Tools.tbx\CalculateField
COMMAND ISSUED
CalculateField MUPOLYGON_ST NRCS_soil "n" VB #
INCLUDE IN LINEAGE WHEN EXPORTING METADATA No

PROCESS
PROCESS NAME
DATE 2019-05-22 16:04:49
TOOL LOCATION c:\program files (x86)\arcgis\desktop10.4\ArcToolbox\Toolboxes\Data Management Tools.tbx\CalculateField
COMMAND ISSUED
CalculateField MUPOLYGON_ST NRCS_soil "n" VB #
INCLUDE IN LINEAGE WHEN EXPORTING METADATA No

PROCESS
PROCESS NAME
DATE 2019-05-22 16:05:51
TOOL LOCATION c:\program files (x86)\arcgis\desktop10.4\ArcToolbox\Toolboxes\Data Management Tools.tbx\CalculateField
COMMAND ISSUED
CalculateField MUPOLYGON_ST flclass "Not prime farmland" VB #
INCLUDE IN LINEAGE WHEN EXPORTING METADATA No

PROCESS
PROCESS NAME
DATE 2019-05-22 16:09:32
TOOL LOCATION c:\program files (x86)\arcgis\desktop10.4\ArcToolbox\Toolboxes\Data Management Tools.tbx\CalculateField
COMMAND ISSUED
CalculateField MUPOLYGON_ST flclass "Not prime farmland" VB #
INCLUDE IN LINEAGE WHEN EXPORTING METADATA No

PROCESS
PROCESS NAME
DATE 2019-05-22 16:10:45
TOOL LOCATION c:\program files (x86)\arcgis\desktop10.4\ArcToolbox\Toolboxes\Data Management Tools.tbx\CalculateField
COMMAND ISSUED
CalculateField MUPOLYGON_ST NRCS_soil "n" VB #
INCLUDE IN LINEAGE WHEN EXPORTING METADATA No

PROCESS
PROCESS NAME
DATE 2019-05-23 09:41:56
TOOL LOCATION c:\program files (x86)\arcgis\desktop10.4\ArcToolbox\Toolboxes\Data Management Tools.tbx\CalculateField
COMMAND ISSUED
CalculateField MUPOLYGON_ST flclass "Not prime farmland" VB #
INCLUDE IN LINEAGE WHEN EXPORTING METADATA No

PROCESS
PROCESS NAME
DATE 2019-05-23 09:43:00
TOOL LOCATION c:\program files (x86)\arcgis\desktop10.4\ArcToolbox\Toolboxes\Data Management Tools.tbx\CalculateField
COMMAND ISSUED
CalculateField MUPOLYGON_ST NRCS_soil "n" VB #
INCLUDE IN LINEAGE WHEN EXPORTING METADATA No

PROCESS
PROCESS NAME
DATE 2019-05-23 10:05:24
TOOL LOCATION c:\program files (x86)\arcgis\desktop10.4\ArcToolbox\Toolboxes\Data Management Tools.tbx\CalculateField
COMMAND ISSUED
CalculateField MUPOLYGON_ST NRCS_soil "n" VB #
INCLUDE IN LINEAGE WHEN EXPORTING METADATA No

PROCESS
PROCESS NAME
DATE 2019-05-23 10:07:02
TOOL LOCATION c:\program files (x86)\arcgis\desktop10.4\ArcToolbox\Toolboxes\Data Management Tools.tbx\CalculateField
COMMAND ISSUED
CalculateField MUPOLYGON_ST flclass "Not prime farmland" VB #
INCLUDE IN LINEAGE WHEN EXPORTING METADATA No
```

PROCESS

PROCESS NAME
DATE 2019-05-23 10:11:02
TOOL LOCATION c:\program files (x86)\arcgis\desktop10.4\ArcToolbox\Toolboxes\Data Management Tools.tbx\CalculateField
COMMAND ISSUED
CalculateField MUPOLYGON_ST flclass "Not complete" VB #
INCLUDE IN LINEAGE WHEN EXPORTING METADATA No

PROCESS

PROCESS NAME
DATE 2019-05-23 10:17:38
TOOL LOCATION c:\program files (x86)\arcgis\desktop10.4\ArcToolbox\Toolboxes\Data Management Tools.tbx\CalculateField
COMMAND ISSUED
CalculateField MUPOLYGON_ST flclass "Not prime farmland" VB #
INCLUDE IN LINEAGE WHEN EXPORTING METADATA No

PROCESS

PROCESS NAME
DATE 2019-05-23 10:18:39
TOOL LOCATION c:\program files (x86)\arcgis\desktop10.4\ArcToolbox\Toolboxes\Data Management Tools.tbx\CalculateField
COMMAND ISSUED
CalculateField MUPOLYGON_ST NRCS_soil "n" VB #
INCLUDE IN LINEAGE WHEN EXPORTING METADATA No

PROCESS

PROCESS NAME
DATE 2019-05-23 10:23:23
TOOL LOCATION c:\program files (x86)\arcgis\desktop10.4\ArcToolbox\Toolboxes\Data Management Tools.tbx\CalculateField
COMMAND ISSUED
CalculateField MUPOLYGON_ST NRCS_soil "n" VB #
INCLUDE IN LINEAGE WHEN EXPORTING METADATA No

PROCESS

PROCESS NAME
DATE 2019-05-23 10:25:00
TOOL LOCATION c:\program files (x86)\arcgis\desktop10.4\ArcToolbox\Toolboxes\Data Management Tools.tbx\CalculateField
COMMAND ISSUED
CalculateField MUPOLYGON_ST flclass "Not prime farmland" VB #
INCLUDE IN LINEAGE WHEN EXPORTING METADATA No

PROCESS

PROCESS NAME
DATE 2019-05-23 10:33:25
TOOL LOCATION c:\program files (x86)\arcgis\desktop10.4\ArcToolbox\Toolboxes\Data Management Tools.tbx\CalculateField
COMMAND ISSUED
CalculateField MUPOLYGON_ST flclass "Not prime farmland" VB #
INCLUDE IN LINEAGE WHEN EXPORTING METADATA No

PROCESS

PROCESS NAME
DATE 2019-05-23 10:34:31
TOOL LOCATION c:\program files (x86)\arcgis\desktop10.4\ArcToolbox\Toolboxes\Data Management Tools.tbx\CalculateField
COMMAND ISSUED
CalculateField MUPOLYGON_ST NRCS_soil "n" VB #
INCLUDE IN LINEAGE WHEN EXPORTING METADATA No

PROCESS

PROCESS NAME
DATE 2019-05-23 10:37:33
TOOL LOCATION c:\program files (x86)\arcgis\desktop10.4\ArcToolbox\Toolboxes\Data Management Tools.tbx\CalculateField
COMMAND ISSUED
CalculateField MUPOLYGON_ST flclass "Not complete" VB #
INCLUDE IN LINEAGE WHEN EXPORTING METADATA No

PROCESS

PROCESS NAME
DATE 2019-05-23 14:12:50
TOOL LOCATION c:\program files (x86)\arcgis\desktop10.4\ArcToolbox\Toolboxes\Data Management Tools.tbx\CalculateField
COMMAND ISSUED
CalculateField MUPOLYGON_ST flclass "Not prime farmland" VB #
INCLUDE IN LINEAGE WHEN EXPORTING METADATA No

PROCESS

PROCESS NAME
DATE 2019-05-23 14:13:45
TOOL LOCATION c:\program files (x86)\arcgis\desktop10.4\ArcToolbox\Toolboxes\Data Management Tools.tbx\CalculateField
COMMAND ISSUED
CalculateField MUPOLYGON_ST NRCS_soil "n" VB #
INCLUDE IN LINEAGE WHEN EXPORTING METADATA No

PROCESS

PROCESS NAME
DATE 2019-05-23 14:25:09

TOOL LOCATION c:\program files (x86)\arcgis\desktop10.4\ArcToolbox\Toolboxes\Data Management Tools.tbx\CalculateField
COMMAND ISSUED
CalculateField MUPOLYGON_ST flclass "Not surveyed" VB #
INCLUDE IN LINEAGE WHEN EXPORTING METADATA No

PROCESS

PROCESS NAME
DATE 2019-05-23 14:26:17
TOOL LOCATION c:\program files (x86)\arcgis\desktop10.4\ArcToolbox\Toolboxes\Data Management Tools.tbx\CalculateField
COMMAND ISSUED
CalculateField MUPOLYGON_ST flclass "Not prime farmland" VB #
INCLUDE IN LINEAGE WHEN EXPORTING METADATA No

PROCESS

PROCESS NAME
DATE 2019-05-23 14:26:41
TOOL LOCATION c:\program files (x86)\arcgis\desktop10.4\ArcToolbox\Toolboxes\Data Management Tools.tbx\CalculateField
COMMAND ISSUED
CalculateField MUPOLYGON_ST NRCS_soil "n" VB #
INCLUDE IN LINEAGE WHEN EXPORTING METADATA No

PROCESS

PROCESS NAME
DATE 2019-05-23 14:38:05
TOOL LOCATION c:\program files (x86)\arcgis\desktop10.4\ArcToolbox\Toolboxes\Data Management Tools.tbx\CalculateField
COMMAND ISSUED
CalculateField MUPOLYGON_ST NRCS_soil "n" VB #
INCLUDE IN LINEAGE WHEN EXPORTING METADATA No

PROCESS

PROCESS NAME
DATE 2019-05-23 14:39:22
TOOL LOCATION c:\program files (x86)\arcgis\desktop10.4\ArcToolbox\Toolboxes\Data Management Tools.tbx\CalculateField
COMMAND ISSUED
CalculateField MUPOLYGON_ST flclass "Not prime farmland" VB #
INCLUDE IN LINEAGE WHEN EXPORTING METADATA No

PROCESS

PROCESS NAME
DATE 2019-05-23 14:42:24
TOOL LOCATION c:\program files (x86)\arcgis\desktop10.4\ArcToolbox\Toolboxes\Data Management Tools.tbx\CalculateField
COMMAND ISSUED
CalculateField MUPOLYGON_ST flclass "Not complete" VB #
INCLUDE IN LINEAGE WHEN EXPORTING METADATA No

PROCESS

PROCESS NAME
DATE 2019-05-23 14:44:48
TOOL LOCATION c:\program files (x86)\arcgis\desktop10.4\ArcToolbox\Toolboxes\Data Management Tools.tbx\CalculateField
COMMAND ISSUED
CalculateField MUPOLYGON_ST flclass "Not complete" VB #
INCLUDE IN LINEAGE WHEN EXPORTING METADATA No

PROCESS

PROCESS NAME
DATE 2019-05-23 14:47:51
TOOL LOCATION c:\program files (x86)\arcgis\desktop10.4\ArcToolbox\Toolboxes\Data Management Tools.tbx\CalculateField
COMMAND ISSUED
CalculateField MUPOLYGON_ST flclass "Not complete" VB #
INCLUDE IN LINEAGE WHEN EXPORTING METADATA No

PROCESS

PROCESS NAME
DATE 2019-05-23 14:50:26
TOOL LOCATION c:\program files (x86)\arcgis\desktop10.4\ArcToolbox\Toolboxes\Data Management Tools.tbx\CalculateField
COMMAND ISSUED
CalculateField MUPOLYGON_ST flclass "Not complete" VB #
INCLUDE IN LINEAGE WHEN EXPORTING METADATA No

PROCESS

PROCESS NAME
DATE 2019-05-23 14:56:18
TOOL LOCATION c:\program files (x86)\arcgis\desktop10.4\ArcToolbox\Toolboxes\Data Management Tools.tbx\CalculateField
COMMAND ISSUED
CalculateField MUPOLYGON_ST flclass "Not prime farmland" VB #
INCLUDE IN LINEAGE WHEN EXPORTING METADATA No

PROCESS

PROCESS NAME
DATE 2019-05-23 14:57:11
TOOL LOCATION c:\program files (x86)\arcgis\desktop10.4\ArcToolbox\Toolboxes\Data Management Tools.tbx\CalculateField
COMMAND ISSUED
CalculateField MUPOLYGON_ST NRCS_soil "n" VB #

INCLUDE IN LINEAGE WHEN EXPORTING METADATA No

PROCESS

PROCESS NAME
DATE 2019-05-23 15:01:24
TOOL LOCATION c:\program files (x86)\arcgis\desktop10.4\ArcToolbox\Toolboxes\Data Management Tools.tbx\CalculateField
COMMAND ISSUED
CalculateField MUPOLYGON_ST NRCS_soil "n" VB #
INCLUDE IN LINEAGE WHEN EXPORTING METADATA No

PROCESS

PROCESS NAME
DATE 2019-05-23 15:02:30
TOOL LOCATION c:\program files (x86)\arcgis\desktop10.4\ArcToolbox\Toolboxes\Data Management Tools.tbx\CalculateField
COMMAND ISSUED
CalculateField MUPOLYGON_ST flclass "Not prime farmland" VB #
INCLUDE IN LINEAGE WHEN EXPORTING METADATA No

PROCESS

PROCESS NAME
DATE 2019-05-23 15:05:00
TOOL LOCATION c:\program files (x86)\arcgis\desktop10.4\ArcToolbox\Toolboxes\Data Management Tools.tbx\CalculateField
COMMAND ISSUED
CalculateField MUPOLYGON_ST flclass "Not complete" VB #
INCLUDE IN LINEAGE WHEN EXPORTING METADATA No

PROCESS

PROCESS NAME
DATE 2019-05-23 15:07:33
TOOL LOCATION c:\program files (x86)\arcgis\desktop10.4\ArcToolbox\Toolboxes\Data Management Tools.tbx\CalculateField
COMMAND ISSUED
CalculateField MUPOLYGON_ST flclass "Not complete" VB #
INCLUDE IN LINEAGE WHEN EXPORTING METADATA No

PROCESS

PROCESS NAME
DATE 2019-05-23 15:10:21
TOOL LOCATION c:\program files (x86)\arcgis\desktop10.4\ArcToolbox\Toolboxes\Data Management Tools.tbx\CalculateField
COMMAND ISSUED
CalculateField MUPOLYGON_ST flclass "Not complete" VB #
INCLUDE IN LINEAGE WHEN EXPORTING METADATA No

PROCESS

PROCESS NAME
DATE 2019-05-23 15:21:39
TOOL LOCATION c:\program files (x86)\arcgis\desktop10.4\ArcToolbox\Toolboxes\Data Management Tools.tbx\CalculateField
COMMAND ISSUED
CalculateField MUPOLYGON_ST flclass "Not complete" VB #
INCLUDE IN LINEAGE WHEN EXPORTING METADATA No

PROCESS

PROCESS NAME
DATE 2019-05-23 15:23:35
TOOL LOCATION c:\program files (x86)\arcgis\desktop10.4\ArcToolbox\Toolboxes\Data Management Tools.tbx\CalculateField
COMMAND ISSUED
CalculateField MUPOLYGON_ST flclass "Not prime farmland" VB #
INCLUDE IN LINEAGE WHEN EXPORTING METADATA No

PROCESS

PROCESS NAME
DATE 2019-05-23 15:25:41
TOOL LOCATION c:\program files (x86)\arcgis\desktop10.4\ArcToolbox\Toolboxes\Data Management Tools.tbx\CalculateField
COMMAND ISSUED
CalculateField MUPOLYGON_ST NRCS_soil "n" VB #
INCLUDE IN LINEAGE WHEN EXPORTING METADATA No

PROCESS

PROCESS NAME
DATE 2019-05-23 15:28:02
TOOL LOCATION c:\program files (x86)\arcgis\desktop10.4\ArcToolbox\Toolboxes\Data Management Tools.tbx\CalculateField
COMMAND ISSUED
CalculateField MUPOLYGON_ST flclass "Not complete" VB #
INCLUDE IN LINEAGE WHEN EXPORTING METADATA No

PROCESS

PROCESS NAME
DATE 2019-05-23 15:32:08
TOOL LOCATION c:\program files (x86)\arcgis\desktop10.4\ArcToolbox\Toolboxes\Data Management Tools.tbx\CalculateField
COMMAND ISSUED
CalculateField MUPOLYGON_ST flclass "Not complete" VB #
INCLUDE IN LINEAGE WHEN EXPORTING METADATA No

PROCESS

PROCESS NAME
DATE 2019-05-23 15:33:42
TOOL LOCATION c:\program files (x86)\arcgis\desktop10.4\ArcToolbox\Toolboxes\Data Management Tools.tbx\CalculateField
COMMAND ISSUED
CalculateField MUPOLYGON_ST flclass "Not prime farmland" VB #
INCLUDE IN LINEAGE WHEN EXPORTING METADATA No

PROCESS
PROCESS NAME
DATE 2019-05-23 15:34:32
TOOL LOCATION c:\program files (x86)\arcgis\desktop10.4\ArcToolbox\Toolboxes\Data Management Tools.tbx\CalculateField
COMMAND ISSUED
CalculateField MUPOLYGON_ST NRCS_soil "n" VB #
INCLUDE IN LINEAGE WHEN EXPORTING METADATA No

PROCESS
PROCESS NAME
DATE 2019-05-23 15:36:52
TOOL LOCATION c:\program files (x86)\arcgis\desktop10.4\ArcToolbox\Toolboxes\Data Management Tools.tbx\CalculateField
COMMAND ISSUED
CalculateField MUPOLYGON_ST flclass "Not complete" VB #
INCLUDE IN LINEAGE WHEN EXPORTING METADATA No

PROCESS
PROCESS NAME
DATE 2019-05-23 15:49:47
TOOL LOCATION c:\program files (x86)\arcgis\desktop10.4\ArcToolbox\Toolboxes\Data Management Tools.tbx\CalculateField
COMMAND ISSUED
CalculateField MUPOLYGON_ST flclass "Not complete" VB #
INCLUDE IN LINEAGE WHEN EXPORTING METADATA No

PROCESS
PROCESS NAME
DATE 2019-05-23 15:50:09
TOOL LOCATION c:\program files (x86)\arcgis\desktop10.4\ArcToolbox\Toolboxes\Data Management Tools.tbx\CalculateField
COMMAND ISSUED
CalculateField MUPOLYGON_ST NRCS_soil "x" VB #
INCLUDE IN LINEAGE WHEN EXPORTING METADATA No

PROCESS
PROCESS NAME
DATE 2019-05-23 15:56:57
TOOL LOCATION c:\program files (x86)\arcgis\desktop10.4\ArcToolbox\Toolboxes\Data Management Tools.tbx\CalculateField
COMMAND ISSUED
CalculateField MUPOLYGON_ST NRCS_soil "x" VB #
INCLUDE IN LINEAGE WHEN EXPORTING METADATA No

PROCESS
PROCESS NAME
DATE 2019-05-23 15:57:48
TOOL LOCATION c:\program files (x86)\arcgis\desktop10.4\ArcToolbox\Toolboxes\Data Management Tools.tbx\CalculateField
COMMAND ISSUED
CalculateField MUPOLYGON_ST flclass "Not complete" VB #
INCLUDE IN LINEAGE WHEN EXPORTING METADATA No

PROCESS
PROCESS NAME
DATE 2019-05-23 15:59:11
TOOL LOCATION c:\program files (x86)\arcgis\desktop10.4\ArcToolbox\Toolboxes\Data Management Tools.tbx\CalculateField
COMMAND ISSUED
CalculateField MUPOLYGON_ST flclass "Not complete" VB #
INCLUDE IN LINEAGE WHEN EXPORTING METADATA No

PROCESS
PROCESS NAME
DATE 2019-05-23 15:59:35
TOOL LOCATION c:\program files (x86)\arcgis\desktop10.4\ArcToolbox\Toolboxes\Data Management Tools.tbx\CalculateField
COMMAND ISSUED
CalculateField MUPOLYGON_ST NRCS_soil "x" VB #
INCLUDE IN LINEAGE WHEN EXPORTING METADATA No

PROCESS
PROCESS NAME
DATE 2019-05-31 14:28:49
TOOL LOCATION c:\program files (x86)\arcgis\desktop10.4\ArcToolbox\Toolboxes\Data Management Tools.tbx\CalculateField
COMMAND ISSUED
CalculateField Farmland_Class_2018 PSU_soil "P" VB #
INCLUDE IN LINEAGE WHEN EXPORTING METADATA No

PROCESS
PROCESS NAME
DATE 2019-05-31 15:14:54
TOOL LOCATION c:\program files (x86)\arcgis\desktop10.4\ArcToolbox\Toolboxes\Data Management Tools.tbx\CalculateField

```

COMMAND ISSUED
  CalculateField Farmland_Class_2018 PSU_soil "S" VB #
INCLUDE IN LINEAGE WHEN EXPORTING METADATA No

PROCESS
  PROCESS NAME
  DATE 2019-05-31 15:18:34
  TOOL LOCATION c:\program files (x86)\arcgis\desktop10.4\ArcToolbox\Toolboxes\Data Management Tools.tbx\CalculateField
  COMMAND ISSUED
    CalculateField Farmland_Class_2018 PSU_soil "U" VB #
  INCLUDE IN LINEAGE WHEN EXPORTING METADATA No

PROCESS
  PROCESS NAME
  DATE 2019-05-31 15:26:30
  TOOL LOCATION c:\program files (x86)\arcgis\desktop10.4\ArcToolbox\Toolboxes\Data Management Tools.tbx\CalculateField
  COMMAND ISSUED
    CalculateField Farmland_Class_2018 PSU_soil "U" VB #
  INCLUDE IN LINEAGE WHEN EXPORTING METADATA No

PROCESS
  PROCESS NAME
  DATE 2019-05-31 15:29:23
  TOOL LOCATION c:\program files (x86)\arcgis\desktop10.4\ArcToolbox\Toolboxes\Data Management Tools.tbx\CalculateField
  COMMAND ISSUED
    CalculateField Farmland_Class_2018 PSU_soil "U" VB #
  INCLUDE IN LINEAGE WHEN EXPORTING METADATA No

PROCESS
  PROCESS NAME
  DATE 2019-05-31 15:30:21
  TOOL LOCATION c:\program files (x86)\arcgis\desktop10.4\ArcToolbox\Toolboxes\Data Management Tools.tbx\CalculateField
  COMMAND ISSUED
    CalculateField Farmland_Class_2018 PSU_soil "U" VB #
  INCLUDE IN LINEAGE WHEN EXPORTING METADATA No

PROCESS
  PROCESS NAME
  DATE 2021-07-14 16:48:12
  TOOL LOCATION c:\program files (x86)\arcgis\desktop10.7\ArcToolbox\Toolboxes\Data Management Tools.tbx\Dissolve
  COMMAND ISSUED
    Dissolve sha_soils C:\Users\kkisko\GIS_Basedata\Soils_Processing\soils_interim_2018.gdb\Shasta\sha_soils_dissolve
    PSU_soil # MULTI_PART DISSOLVE_LINES
  INCLUDE IN LINEAGE WHEN EXPORTING METADATA No

PROCESS
  PROCESS NAME
  DATE 2021-07-14 17:02:39
  TOOL LOCATION c:\program files (x86)\arcgis\desktop10.7\ArcToolbox\Toolboxes\Analysis Tools.tbx\Union
  COMMAND ISSUED
    Union "C:\Users\kkisko\GIS_Basedata\Soils_Processing\soils_interim_2018.gdb\Shasta\sha_soils_new
    #C:\Users\kkisko\GIS_Basedata\Soils_Processing\soils_z_boundaries_2018.gdb\Shasta\sha_z_polygon #"
    C:\Users\kkisko\GIS_Basedata\Soils_Processing\soils_interim_2018.gdb\Shasta\sha_soils_z_union NO_FID # GAPS
  INCLUDE IN LINEAGE WHEN EXPORTING METADATA No

PROCESS
  PROCESS NAME
  DATE 2021-11-19 08:40:26
  TOOL LOCATION c:\program files (x86)\arcgis\desktop10.7\ArcToolbox\Toolboxes\Analysis Tools.tbx\Union
  COMMAND ISSUED
    Union "Shasta_soils #;shaf18 #" G:\DLRP\ESRIConversion\shasta\1618\sha1618.gdb\sha1618_dataset\Shasta2018 NO_FID #
    GAPS
  INCLUDE IN LINEAGE WHEN EXPORTING METADATA No

PROCESS
  PROCESS NAME
  DATE 2021-11-19 08:47:38
  TOOL LOCATION c:\program files (x86)\arcgis\desktop10.7\ArcToolbox\Toolboxes\Data Management Tools.tbx\CalculateField
  COMMAND ISSUED
    CalculateField Shasta2018 ifl18 [new_polygon_type] VB #
  INCLUDE IN LINEAGE WHEN EXPORTING METADATA No

PROCESS
  PROCESS NAME
  DATE 2021-11-19 09:09:05
  TOOL LOCATION c:\program files (x86)\arcgis\desktop10.7\ArcToolbox\Toolboxes\Data Management Tools.tbx\CalculateField
  COMMAND ISSUED
    CalculateField Shasta2018 ifl18 "P" VB #
  INCLUDE IN LINEAGE WHEN EXPORTING METADATA No

PROCESS
  PROCESS NAME
  DATE 2021-11-19 09:10:41

```

TOOL LOCATION c:\program files (x86)\arcgis\desktop10.7\ArcToolbox\Toolboxes\Data Management Tools.tbx\CalculateField
 COMMAND ISSUED
 CalculateField Shasta2018 ifl18 "S" VB #
 INCLUDE IN LINEAGE WHEN EXPORTING METADATA No

PROCESS

PROCESS NAME
 DATE 2021-11-19 09:11:42
 TOOL LOCATION c:\program files (x86)\arcgis\desktop10.7\ArcToolbox\Toolboxes\Data Management Tools.tbx\CalculateField
 COMMAND ISSUED
 CalculateField Shasta2018 ifl18 "U" VB #
 INCLUDE IN LINEAGE WHEN EXPORTING METADATA No

PROCESS

PROCESS NAME
 DATE 2021-11-19 09:12:38
 TOOL LOCATION c:\program files (x86)\arcgis\desktop10.7\ArcToolbox\Toolboxes\Data Management Tools.tbx\CalculateField
 COMMAND ISSUED
 CalculateField Shasta2018 ifl18 "P" VB #
 INCLUDE IN LINEAGE WHEN EXPORTING METADATA No

PROCESS

PROCESS NAME
 DATE 2021-11-19 09:14:15
 TOOL LOCATION c:\program files (x86)\arcgis\desktop10.7\ArcToolbox\Toolboxes\Data Management Tools.tbx\CalculateField
 COMMAND ISSUED
 CalculateField Shasta2018 ifl18 "S" VB #
 INCLUDE IN LINEAGE WHEN EXPORTING METADATA No

PROCESS

PROCESS NAME
 DATE 2021-11-19 09:18:39
 TOOL LOCATION c:\program files (x86)\arcgis\desktop10.7\ArcToolbox\Toolboxes\Data Management Tools.tbx\CalculateField
 COMMAND ISSUED
 CalculateField Shasta2018 ifl18 "I" VB #
 INCLUDE IN LINEAGE WHEN EXPORTING METADATA No

PROCESS

PROCESS NAME
 DATE 2021-11-19 09:20:41
 TOOL LOCATION c:\program files (x86)\arcgis\desktop10.7\ArcToolbox\Toolboxes\Data Management Tools.tbx\CalculateField
 COMMAND ISSUED
 CalculateField Shasta2018 ifl18 "U" VB #
 INCLUDE IN LINEAGE WHEN EXPORTING METADATA No

PROCESS

PROCESS NAME
 DATE 2021-11-19 09:21:36
 TOOL LOCATION c:\program files (x86)\arcgis\desktop10.7\ArcToolbox\Toolboxes\Data Management Tools.tbx\CalculateField
 COMMAND ISSUED
 CalculateField Shasta2018 ifl18 "I" VB #
 INCLUDE IN LINEAGE WHEN EXPORTING METADATA No

PROCESS

PROCESS NAME
 DATE 2021-11-19 09:32:00
 TOOL LOCATION c:\program files (x86)\arcgis\desktop10.7\ArcToolbox\Toolboxes\Data Management Tools.tbx\CalculateField
 COMMAND ISSUED
 CalculateField Shasta2018 polygon_ac [Shape_Area]/4046.856422 VB #
 INCLUDE IN LINEAGE WHEN EXPORTING METADATA No

PROCESS

PROCESS NAME
 DATE 2021-12-06 17:29:03
 TOOL LOCATION c:\program files (x86)\arcgis\desktop10.7\ArcToolbox\Toolboxes\Conversion Tools.tbx\FeatureClassToFeatureClass
 COMMAND ISSUED
 FeatureClassToFeatureClass G:\DLRP\ESRIConversion\shasta\1618\shal1618.gdb\shal1618_dataset\Shasta2018
 G:\DLRP\ArchivedData\GIS\IFL_2018.gdb\shasta shasta2018 # "upd_year" true true false 8 Double 0
 0 ,First,#,G:\DLRP\ESRIConversion\shasta\1618\shal1618.gdb\shal1618_dataset\Shasta2018,upd_year,-1,-1;county_nam
 "county_nam" true true false 20 Text 0 0 ,First,#,G:\DLRP\ESRIConversion\shasta\1618
 \shal1618.gdb\shal1618_dataset\Shasta2018,county_nam,-1,-1;polygon_ac "polygon_ac" true true false 8 Double 0
 0 ,First,#,G:\DLRP\ESRIConversion\shasta\1618\shal1618.gdb\shal1618_dataset\Shasta2018,polygon_ac,-1,-1;Shape_Length
 "Shape_Length" false true true 8 Double 0 0 ,First,#,G:\DLRP\ESRIConversion\shasta\1618
 \shal1618.gdb\shal1618_dataset\Shasta2018,Shape_Length,-1,-1;Shape Area "Shape_Area" false true true 8 Double 0
 0 ,First,#,G:\DLRP\ESRIConversion\shasta\1618\shal1618.gdb\shal1618_dataset\Shasta2018,Shape_Area,-1,-1;ifl18 "ifl18"
 true true false 5 Text 0 0 ,First,#,G:\DLRP\ESRIConversion\shasta\1618
 \shal1618.gdb\shal1618_dataset\Shasta2018,ifl18,-1,-1" #
 INCLUDE IN LINEAGE WHEN EXPORTING METADATA No

PROCESS

PROCESS NAME
 DATE 2021-12-06 17:42:29
 TOOL LOCATION c:\program files (x86)\arcgis\desktop10.7\ArcToolbox\Toolboxes\Data Management Tools.tbx\CalculateField

COMMAND ISSUED
 CalculateField shasta2018 upd_year "2018" VB #
 INCLUDE IN LINEAGE WHEN EXPORTING METADATA No

PROCESS

PROCESS NAME
 DATE 2021-12-06 17:42:47
 TOOL LOCATION c:\program files (x86)\arcgis\desktop10.7\ArcToolbox\Toolboxes\Data Management Tools.tbx\CalculateField
 COMMAND ISSUED
 CalculateField shasta2018 county_nam "sha" VB #
 INCLUDE IN LINEAGE WHEN EXPORTING METADATA No

PROCESS

PROCESS NAME
 DATE 2021-12-06 17:43:47
 TOOL LOCATION c:\program files (x86)\arcgis\desktop10.7\ArcToolbox\Toolboxes\Data Management Tools.tbx\CalculateField
 COMMAND ISSUED
 CalculateField shasta2018 polygon_ty [ifl118] VB #
 INCLUDE IN LINEAGE WHEN EXPORTING METADATA No

PROCESS

DATE 2022-10-18 10:46:35
 TOOL LOCATION c:\program files\arcgis\pro\Resources\ArcToolbox\toolboxes\Data Management Tools.tbx\CopyFeatures
 COMMAND ISSUED
 CopyFeatures shasta2018
 C:\Users\pcadmin\Downloads\Important_Farmland_2020_in_progress\Important_Farmland_2018.gdb\Important_Farmland_2020
 \shasta2018 # # # #
 INCLUDE IN LINEAGE WHEN EXPORTING METADATA No

PROCESS

DATE 2023-04-13 11:00:40
 TOOL LOCATION c:\program files (x86)\arcgis\desktop10.8\ArcToolbox\Toolboxes\Analysis Tools.tbx\Clip
 COMMAND ISSUED
 Clip shasta2018 "1 mile from the Project Site" "V:\1956\active_Task Owner and other Non-BC1956 Jobs\185703743
 \03_data\gis_cad\gis\mxd\2023\Calcs and Data\LU-
 02_LandUse.gdb\ShastaCo_CalifImportantFarmland2018_1mileBuffer_Clip" #
 INCLUDE IN LINEAGE WHEN EXPORTING METADATA No

[Hide Geoprocessing history ▲](#)

Distribution ►

DISTRIBUTOR ►

CONTACT INFORMATION

INDIVIDUAL'S NAME Farmland Mapping and Monitoring Program
 ORGANIZATION'S NAME California Department of Conservation, Division of Land Resource Protection
 CONTACT'S ROLE originator

CONTACT INFORMATION ►

PHONE
 VOICE (916) 324-0850

ADDRESS

TYPE both
 DELIVERY POINT 715 P Street MS 1904
 CITY Sacramento
 ADMINISTRATIVE AREA California
 POSTAL CODE 95814
 E-MAIL ADDRESS fmmp@conservation.ca.gov

[Hide Contact information ▲](#)

AVAILABLE FORMAT

NAME File Geodatabase Feature Class and REST service

[Hide Distributor ▲](#)

DISTRIBUTION FORMAT

NAME File Geodatabase Feature Class and REST service

TRANSFER OPTIONS

ONLINE SOURCE
 LOCATION www.conservation.ca.gov/dlrp/fmmp

[Hide Distribution ▲](#)

Fields ►

DETAILS FOR OBJECT [ShastaCo_CalifImportantFarmland2018_1mileBuffer_Clip](#) ►

*TYPE Feature Class

* ROW COUNT 10

FIELD OBJECTID ►

* ALIAS OBJECTID
 * DATA TYPE OID
 * WIDTH 4
 * PRECISION 0
 * SCALE 0

FIELD DESCRIPTION
 Internal feature number.

DESCRIPTION SOURCE
 Esri

DESCRIPTION OF VALUES
 Sequential unique whole numbers that are automatically generated.

Hide Field OBJECTID ▲

FIELD Shape ►

* ALIAS Shape
 * DATA TYPE Geometry
 * WIDTH 0
 * PRECISION 0
 * SCALE 0

FIELD DESCRIPTION
 Feature geometry.

DESCRIPTION SOURCE
 Esri

DESCRIPTION OF VALUES
 Coordinates defining the features.

Hide Field Shape ▲

FIELD upd_year ►

* ALIAS upd_year
 * DATA TYPE Double
 * WIDTH 8
 * PRECISION 0
 * SCALE 0

FIELD DESCRIPTION
 The year the data was captured.

DESCRIPTION SOURCE
 Farmland Mapping and Monitoring Program

ACCURACY INFORMATION
 ACCURACY FMMP updates their data biennially on even numbered years.

Hide Field upd_year ▲

FIELD county_nam ►

* ALIAS county_nam
 * DATA TYPE String
 * WIDTH 20
 * PRECISION 0
 * SCALE 0

FIELD DESCRIPTION
 County name identified by a three-letter abbreviation.

DESCRIPTION SOURCE
 Farmland Mapping and Monitoring Program

ACCURACY INFORMATION
 ACCURACY Shasta County is abbreviated as "sha".

Hide Field county_nam ▲

FIELD polygon_ac ►

* ALIAS polygon_ac
 * DATA TYPE Double
 * WIDTH 8
 * PRECISION 0
 * SCALE 0

FIELD DESCRIPTION

The acreage of the polygon feature.

DESCRIPTION SOURCE
Computer calculated.

[Hide Field polygon_ac ▲](#)

FIELD Shape_Length ►

* ALIAS Shape_Length
* DATA TYPE Double
* WIDTH 8
* PRECISION 0
* SCALE 0

FIELD DESCRIPTION
Length of feature in internal units.

DESCRIPTION SOURCE
Esri

DESCRIPTION OF VALUES
Positive real numbers that are automatically generated.

[Hide Field Shape_Length ▲](#)

FIELD Shape_Area ►

* ALIAS Shape_Area
* DATA TYPE Double
* WIDTH 8
* PRECISION 0
* SCALE 0

FIELD DESCRIPTION
Area of feature in internal units squared.

DESCRIPTION SOURCE
Esri

DESCRIPTION OF VALUES
Positive real numbers that are automatically generated.

[Hide Field Shape_Area ▲](#)

FIELD polygon_ty ►

* ALIAS polygon_ty
* DATA TYPE String
* WIDTH 5
* PRECISION 0
* SCALE 0

FIELD DESCRIPTION
Identifies the mapping categories used by the Farmland Mapping and Monitoring Program.

DESCRIPTION SOURCE
Definitions were developed by the USDA-NRCS as part of their nationwide Land Inventory and Monitoring (LIM) system and modified for use in California.

LIST OF VALUES

VALUE Prime Farmland (P)

DESCRIPTION Prime Farmland has the best combination of physical and chemical features able to sustain long-term agricultural production. This land has the soil quality, growing season, and moisture supply needed to produce sustained high yields. Land must have been used for irrigated agricultural production at some time during the four years prior to the mapping date

ENUMERATED DOMAIN VALUE DEFINITION SOURCE Farmland Mapping and Monitoring Program

VALUE Farmland of Statewide Importance (S)

DESCRIPTION Farmland of Statewide Importance is similar to Prime Farmland but with minor shortcomings, such as greater slopes or less ability to store soil moisture. Land must have been used for irrigated agricultural production at some time during the four years prior to the mapping date.

ENUMERATED DOMAIN VALUE DEFINITION SOURCE Farmland Mapping and Monitoring Program

VALUE Unique Farmland (U)

DESCRIPTION Unique Farmland consists of lesser quality soils used for the production of the state's leading agricultural crops. This land is usually irrigated, but may include nonirrigated orchards or vineyards as found in some climatic zones in California. Land must have been cropped at some time during the four years prior to the mapping date.

ENUMERATED DOMAIN VALUE DEFINITION SOURCE Farmland Mapping and Monitoring Program

VALUE Farmland of Local Importance (L)

DESCRIPTION Dryland grain producing lands. Also included are farmlands that are presently irrigated but do not meet the soil characteristics of Prime or Statewide. The majority of these farmlands are located within the Anderson Cottonwood Irrigation District.

These soils include Newton gravelly loam (8 to 15 percent slopes), Moda loam, seeped (0 to 3 percent slopes), Moda loam, shallow (0 to 5 percent slopes), and Hillgate loam.

ENUMERATED DOMAIN VALUE DEFINITION SOURCE Farmland Mapping and Monitoring Program

VALUE Grazing Land (G)

DESCRIPTION Grazing Land is land on which the existing vegetation is suited to the grazing of livestock.

ENUMERATED DOMAIN VALUE DEFINITION SOURCE Farmland Mapping and Monitoring Program

VALUE Urban and Built-Up Land (D)

DESCRIPTION Urban and Built-up Land is occupied by structures with a building density of at least 1 unit to 1.5 acres, or approximately 6 structures to a 10-acre parcel. Common examples include residential, industrial, commercial, institutional facilities, cemeteries, airports, golf courses, sanitary landfills, sewage treatment, and water control structures.

ENUMERATED DOMAIN VALUE DEFINITION SOURCE Farmland Mapping and Monitoring Program

VALUE Other Land (X)

DESCRIPTION Other Land is land not included in any other mapping category. Common examples include low density rural developments, brush, timber, wetland, and riparian areas not suitable for livestock grazing, confined livestock, poultry, or aquaculture facilities, strip mines, borrow pits, and water bodies smaller than 40 acres. Vacant and nonagricultural land surrounded on all sides by urban development and greater than 40 acres is mapped as Other Land.

ENUMERATED DOMAIN VALUE DEFINITION SOURCE Farmland Mapping and Monitoring Program

VALUE Water (W)

DESCRIPTION Perennial water bodies with an extent of at least 40 acres.

ENUMERATED DOMAIN VALUE DEFINITION SOURCE Farmland Mapping and Monitoring Program

VALUE Area not mapped (Z)

DESCRIPTION Area which falls outside of the NRCS soil survey. Not mapped by the FMMP.

ENUMERATED DOMAIN VALUE DEFINITION SOURCE Farmland Mapping and Monitoring Program

[Hide Field polygon_ty ▲](#)

[Hide Details for object ShastaCo_CalifImportantFarmland2018_1mileBuffer_Clip ▲](#)

[Hide Fields ▲](#)

Metadata Details ►

METADATA LANGUAGE English (UNITED STATES)

METADATA CHARACTER SET utf8 - 8 bit UCS Transfer Format

SCOPE OF THE DATA DESCRIBED BY THE METADATA dataset

SCOPE NAME * dataset

LAST UPDATE 2018-11-03

ARCGIS METADATA PROPERTIES

METADATA FORMAT ArcGIS 1.0

STANDARD OR PROFILE USED TO EDIT METADATA FGDC

CREATED IN ARCGIS FOR THE ITEM 2021-07-14 17:25:15

LAST MODIFIED IN ARCGIS FOR THE ITEM 2023-06-21 15:21:10

AUTOMATIC UPDATES

HAVE BEEN PERFORMED Yes

LAST UPDATE 2023-06-21 15:21:10

[Hide Metadata Details ▲](#)

Metadata Contacts ►

METADATA CONTACT

INDIVIDUAL'S NAME Farmland Mapping and Monitoring Program

ORGANIZATION'S NAME California Department of Conservation, Division of Land Resource Protection

CONTACT'S ROLE originator

CONTACT INFORMATION ►

PHONE

VOICE (916) 324-0850

ADDRESS

TYPE both

DELIVERY POINT 715 P Street MS 1904

CITY Sacramento

ADMINISTRATIVE AREA California

POSTAL CODE 95814

E-MAIL ADDRESS fmmp@conservation.ca.gov

[Hide Contact information ▲](#)

[Hide Metadata Contacts ▲](#)

Metadata Maintenance ►

MAINTENANCE

TIME PERIOD BETWEEN UPDATES

TIME DURATION Biennial on even numbered years

MAINTENANCE CONTACT

INDIVIDUAL'S NAME Farmland Mapping and Monitoring Program

ORGANIZATION'S NAME California Department of Conservation, Division of Land Resource Protection

CONTACT'S ROLE originator

CONTACT INFORMATION ►

PHONE

VOICE (916) 324-0850

ADDRESS

TYPE both

DELIVERY POINT 715 P Street MS 1904

CITY Sacramento

ADMINISTRATIVE AREA California

POSTAL CODE 95814

E-MAIL ADDRESS fmmp@conservation.ca.gov

[Hide Contact information ▲](#)

[Hide Metadata Maintenance ▲](#)

Thumbnail and Enclosures ►

THUMBNAIL

THUMBNAIL TYPE JPG

ENCLOSURE

ENCLOSURE TYPE File

DESCRIPTION OF ENCLOSURE original metadata

ORIGINAL METADATA DOCUMENT, WHICH WAS TRANSLATED yes

SOURCE METADATA FORMAT fgdc

[Hide Thumbnail and Enclosures ▲](#)

FGDC Metadata (read-only) ▼