

DOCKETED

| | |
|-------------------------|---|
| Docket Number: | 22-DECARB-03 |
| Project Title: | Equitable Building Decarbonization Program |
| TN #: | 250643 |
| Document Title: | Presentation EBD Workshop, San Francisco 2023-06-06 |
| Description: | N/A |
| Filer: | Vivian Chi |
| Organization: | California Energy Commission |
| Submitter Role: | Commission Staff |
| Submission Date: | 6/16/2023 11:13:18 AM |
| Docketed Date: | 6/16/2023 |

California Energy Commission Regional Community Workshop: Equitable Building Decarbonization Direct Install Program

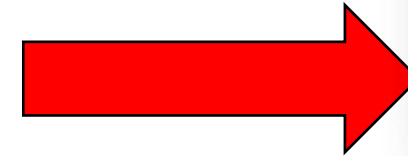
San Francisco, June 6, 2023



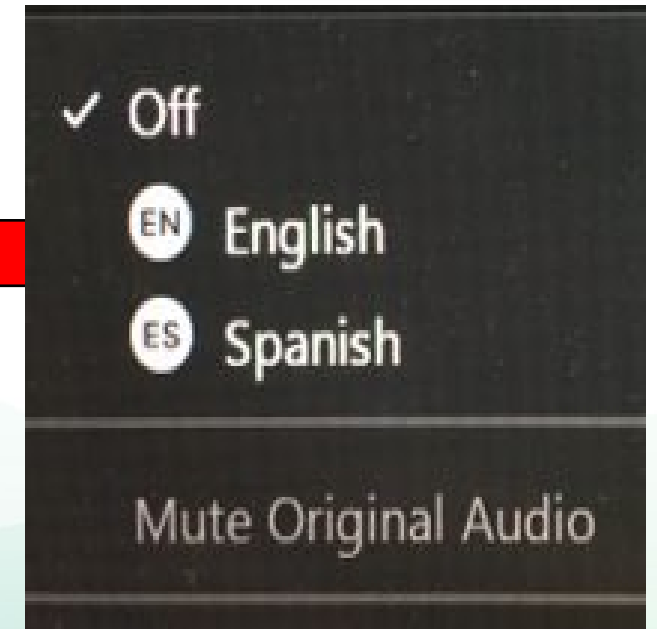


Steps to Select English Channel

1) Click "Interpretation" icon



2) Click "EN English" option

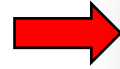


3) **DO NOT** select "Mute Original Audio"



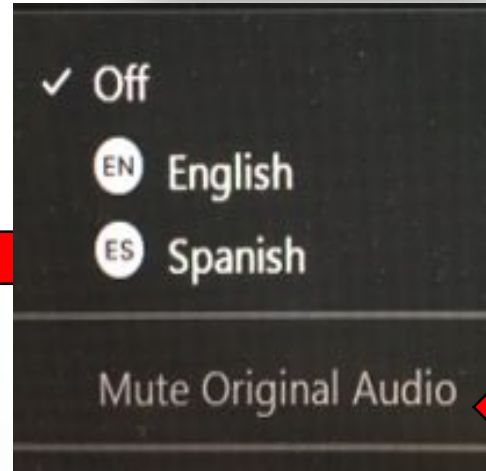
Interpretation / Interpretación

1) Click globe “Interpretation” icon.



2) Click “ES Spanish” option

3) Click “Mute Original Audio”



1) Haga clic en el icono del globo de interpretación

2) Haga clic donde dice “ES Spanish”

3) Haga clic en “Mute Original Audio”

NOTE: To access interpretation, download Zoom application on your device. Interpreter will relate everything from English to Spanish during meeting and will inform you when to make public comment. Speak in Spanish and interpreter will relate comments to English.

NOTA: Para utilizar la función de interpretación, descargue la aplicación Zoom en su aparato. El intérprete relacionará todo lo dicho en inglés al español durante la junta y le informará cuándo podrá hacer un comentario público. Hable en español y el intérprete relatará sus comentarios en inglés.



Instructions / Instrucciones

- Meeting is conducted with in person locations and remotely via Zoom
 - Recorded and transcribed by court reporter
 - To participate in public comment
 - By computer: use the “raise hand” feature in Zoom
 - By telephone: dial *9 to “raise hand” and *6 to mute/unmute your phone line
 - Questions and Comments can be entered in the Q&A section of the Zoom application
- Reunión realizada de manera presencial y remota a través de Zoom
 - Grabada y transcrita por un taquígrafo judicial
 - Para participar en los comentarios públicos
 - Por computadora: use la función de “levantar la mano” de Zoom
 - Por teléfono: marque *9 para “levantar la mano” y *6 para silenciar y activar el sonido
 - Haga sus preguntas o comentarios a través de la función de preguntas y respuestas



Goal of Regional Workshops

Seek input and regional perspective on:

- Design of Equitable Building Decarbonization Program
 - Program Guidelines
 - Criteria and services to consider
 - Collaboration with local initiatives
- Needs and challenges of various communities and residents across the state
- Approaches for meaningful engagement



Agenda

- 1:00 Welcome
- 1:30 Presentations
 - State Equitable Building Decarbonization Program
 - Federal Inflation Reduction Act residential energy programs
 - Locally available energy efficiency and electrification programs
- 2:30 Roundtable discussion on energy-related local community needs and challenges
- 3:00 Questions and answers
- 3:30 Public comments
- 4:00 Adjourn



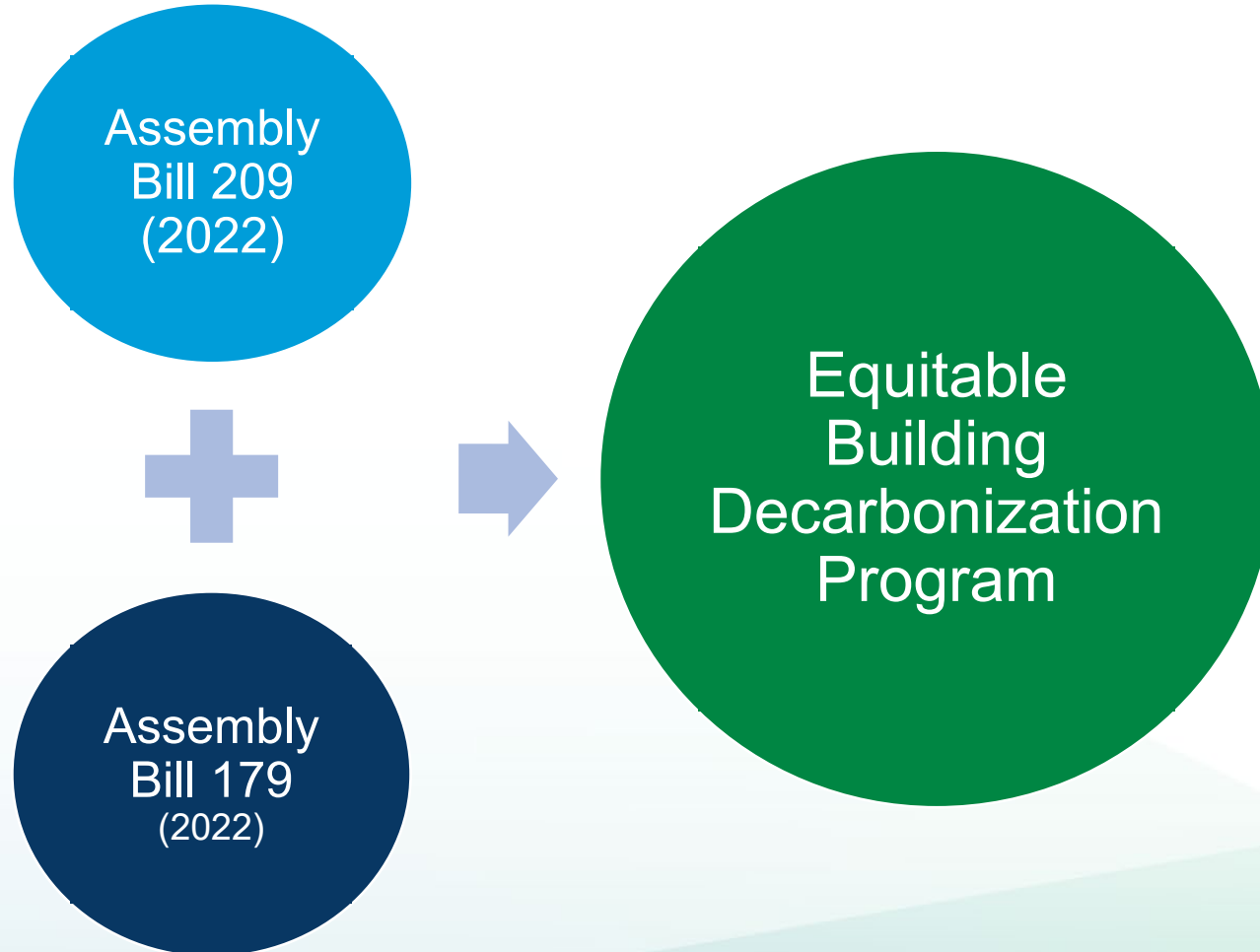
Opening Remarks

Commissioner Andrew McAllister, Ph.D.



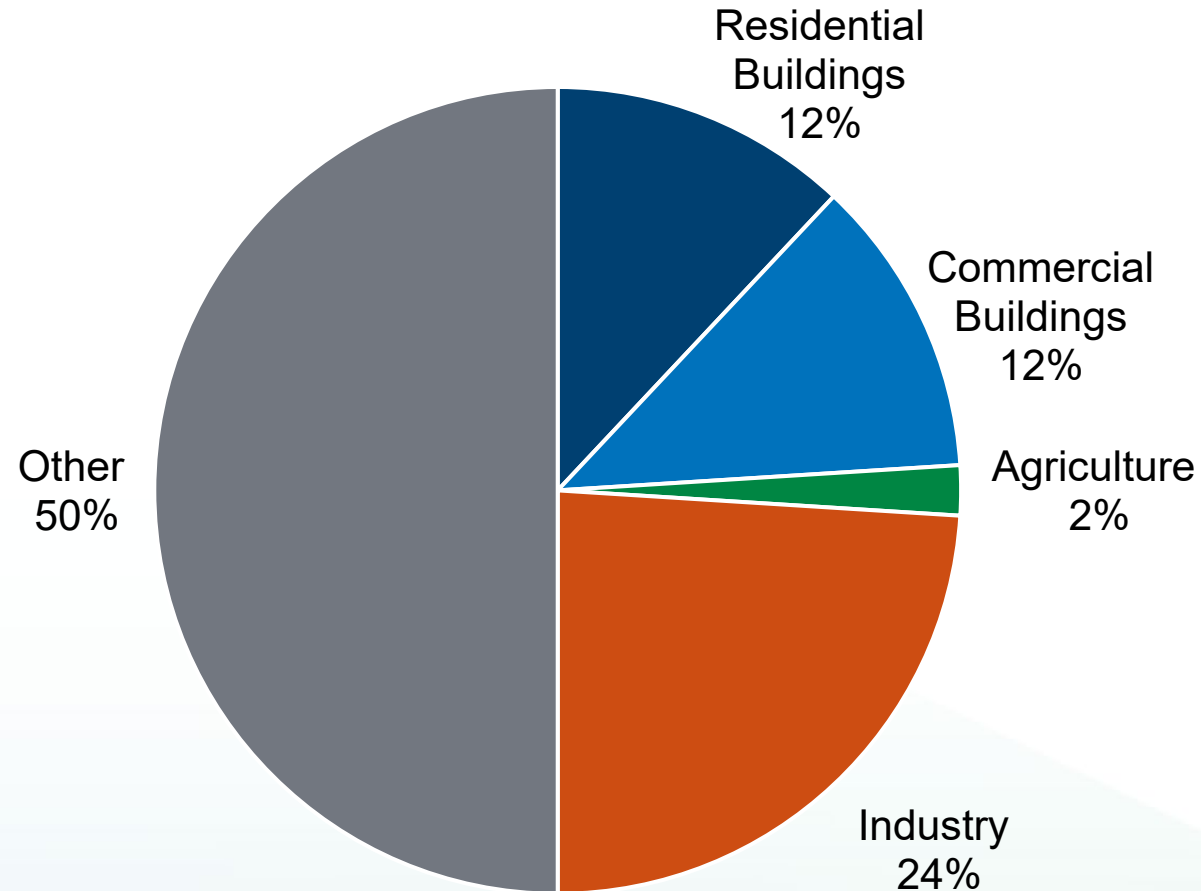


Equitable Building Decarbonization Program





California's Greenhouse Gas Emissions



Includes fuel, refrigerant, and electricity use by sector.
Source: 2021 Integrated Energy Policy Report.



Timeline for Direct Install Program

| Date | Milestone |
|------------------|---|
| 9/6/2022 | AB 209 and AB 179 signed |
| 12/9/2022 | Request for Information released |
| 12/13/2022 | Public workshop on program scoping |
| 1/20/2023 | Deadline for public comments (extended at stakeholder request) |
| Feb-April 2023 | Comment review and development of draft guidelines |
| 5/4/2023 | Release draft guidelines |
| ★ May-June 2023 | Public workshops on draft guidelines, Tribal listening sessions, comment period |
| 6/30/2023 | Deadline for public comments |
| Summer 2023 | Staff review comments and finalize guidelines on Statewide Direct Install Program |
| Fall 2023 | CEC adoption hearing on guidelines |
| Fall/Winter 2023 | Direct install program administrators selected through competitive solicitation |
| 2024-2025 | Administrator ramp-up and direct install program roll-out in initial communities |



Overview of Draft Guidelines





Program Goals

Reduce
Greenhouse Gas
Emissions

Advance Energy
Equity

Improve Resiliency
to Extreme Heat

Improve Indoor Air
Quality

Improve Energy
Affordability

Support Grid
Reliability

Support Local
Workforce

Support 6 Million
Heat Pump Goal

Support Climate-
Ready and Climate-
Friendly Homes
Goals



Proposed Program Components

Statewide
Direct
Install
Program

Tribal
Direct
Install
Program

Support
for
Existing
Programs

Statewide
Incentive
Program



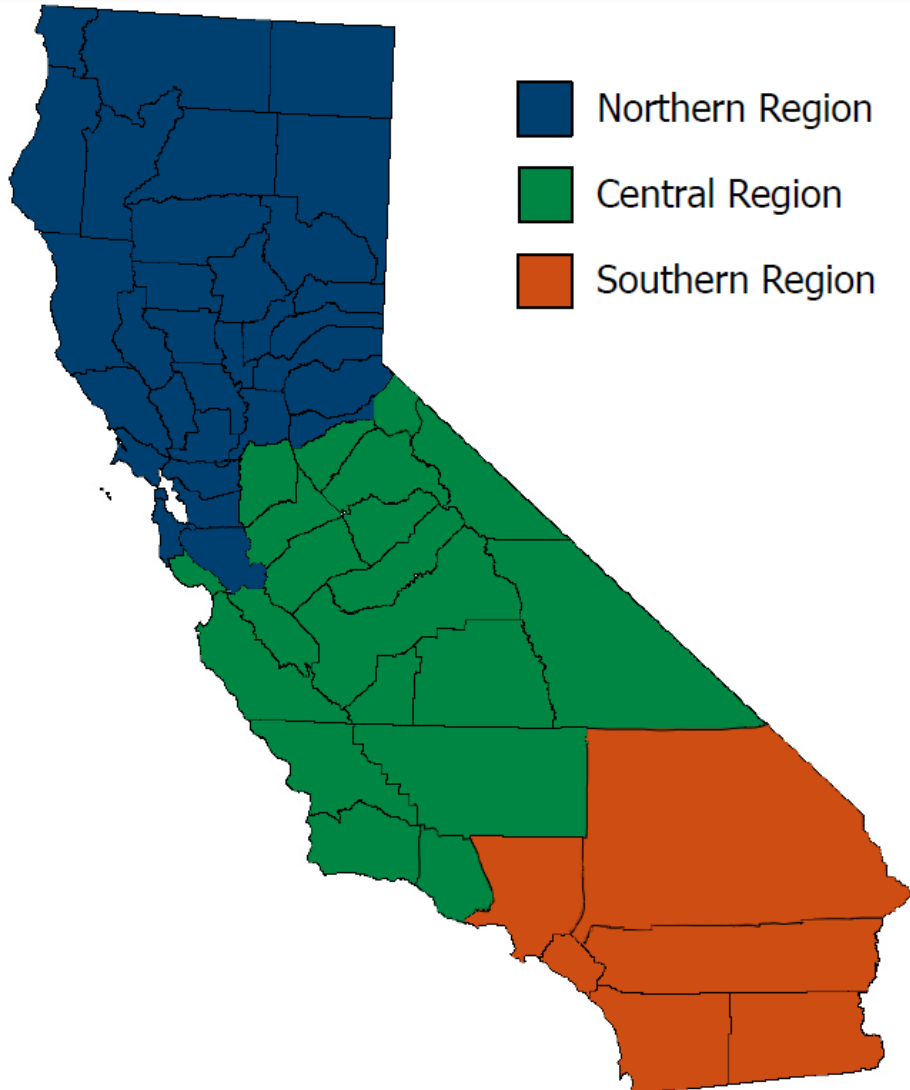
Proposed Budget Breakdown

| Program Investments | Estimated Funding over Program Lifetime |
|---|---|
| Statewide Direct Install Program, including 5% set-aside for manufactured housing | \$643,700,000 |
| Tribal Direct Install Program | \$30,000,000 |
| Support for Existing Programs | \$30,000,000 |
| Statewide Incentive Program | \$80,000,000 |
| Total* | \$783,700,000 |

* Does not include program administration and technical assistance, which may represent up to 15% of total program funds.



Statewide Direct Install Program: Regional Funding Allocation



| Region | Population of Underresourced Communities | Percentage of Statewide Direct Install Program Funds |
|--------------|--|--|
| Northern | 5.3 million | 23% |
| Central | 4.3 million | 19% |
| Southern | 13.6 million | 58% |
| Total | 23.2 million | 100% |



Statewide Direct Install Program: Selection of Administrators



- Competitive solicitation
- Must include community-based organizations (CBOs)
- Selection criteria will be included in Request for Proposals



Statewide Direct Install Program: Community Eligibility

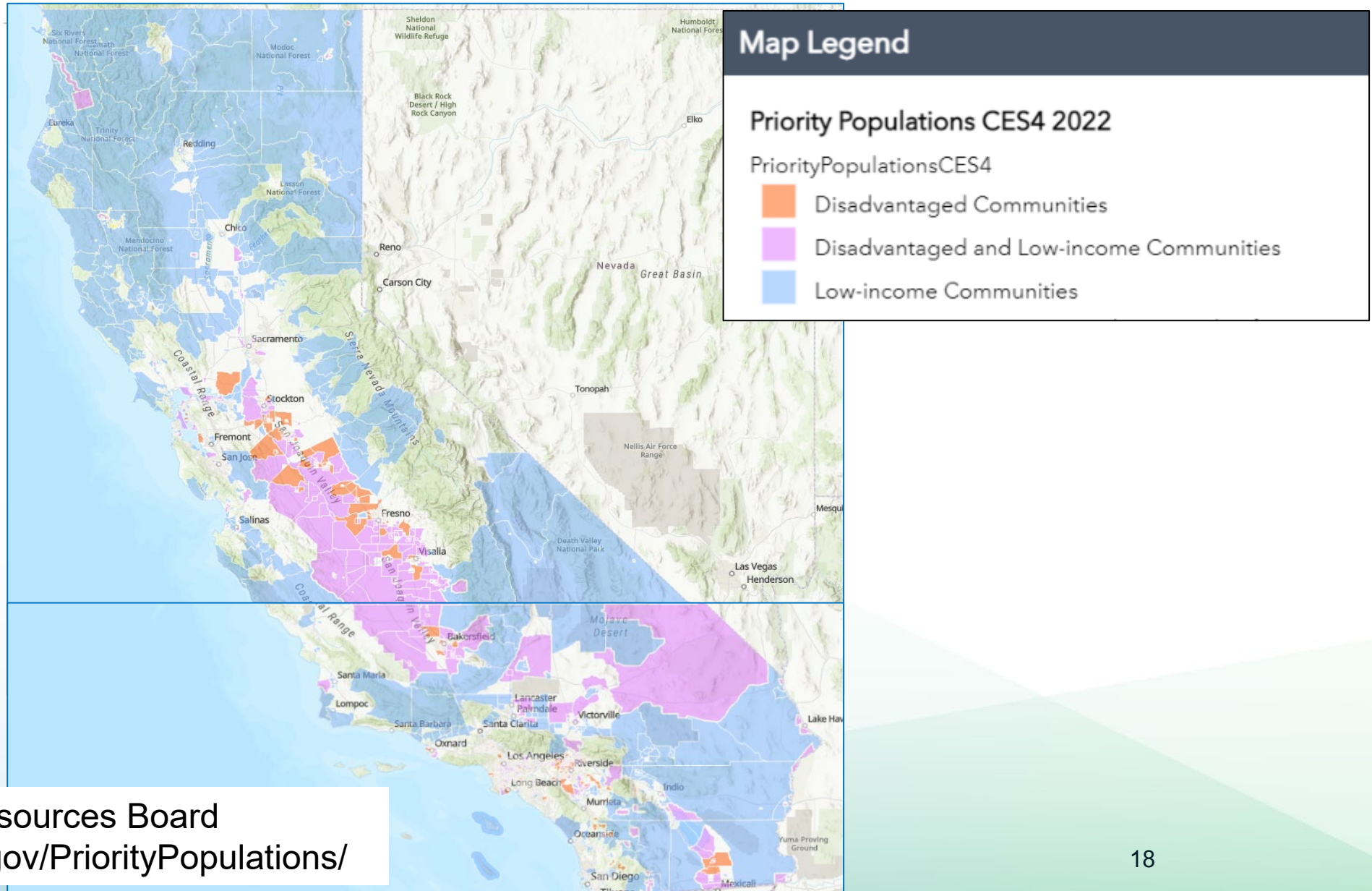
Household must be in
underresourced community:

- Disadvantaged Communities designated by CalEPA
- Census tracts with AMI at or below 80% of statewide AMI
- Census tracts with median household incomes at or below threshold designated as low-income by HCD





Underresourced Communities



Source: California Air Resources Board
<https://webmaps.arb.ca.gov/PriorityPopulations/>



Statewide Direct Install Program: Initial Focus Areas

- Program implementation to occur at the **community level** in partnership with CBOs
- **Initial focus areas** to be identified for first phase of program based on specified criteria
- Opportunities for communities not identified as initial focus areas to be considered for inclusion in **subsequent phases**



Statewide Direct Install Program: Eligible Building and Fuel Types



Eligible Buildings - Residential

- Single-family homes
- Multifamily buildings
- Other residential buildings such as assisted living facilities | group homes
- Mixed-use buildings including residential units
- Manufactured homes, mobile homes, multifamily manufactured homes



Eligible Fuel Types

- To be eligible, buildings must use natural gas, propane, or another fossil fuel as the primary fuel for space heating or water heating



Statewide Direct Install Program: Income Eligibility



Single-family homes:

- Occupied by low-income or moderate-income households
- Low-income: $\leq 80\%$ of local AMI
- Moderate-income: 80-120% of AMI



Multifamily buildings:

- At least 66% of households earn less than or equal to 80% of AMI, or
- Rent for at least 66% of units are affordable to such households



Statewide Direct Install Program: Household/Property Targeting

Within focus areas, data will be used to identify and target households most likely to benefit from program

Criteria to include:

- Likelihood of favorable bill impacts from decarbonization
- Vulnerability to extreme heat
- Potential for avoided GHGs
- Proximity to other targeted households





Statewide Direct Install Program: Set-Aside for Manufactured Homes



- 5% set-aside for manufactured homes and mobile homes
- Unique challenges to decarbonization:
 - Low electrical capacity
 - Limited space availability
 - Higher remediation needs
 - Retrofits must comply with National Manufactured Home Construction and Safety Standards



Statewide Direct Install Program: Required Measures

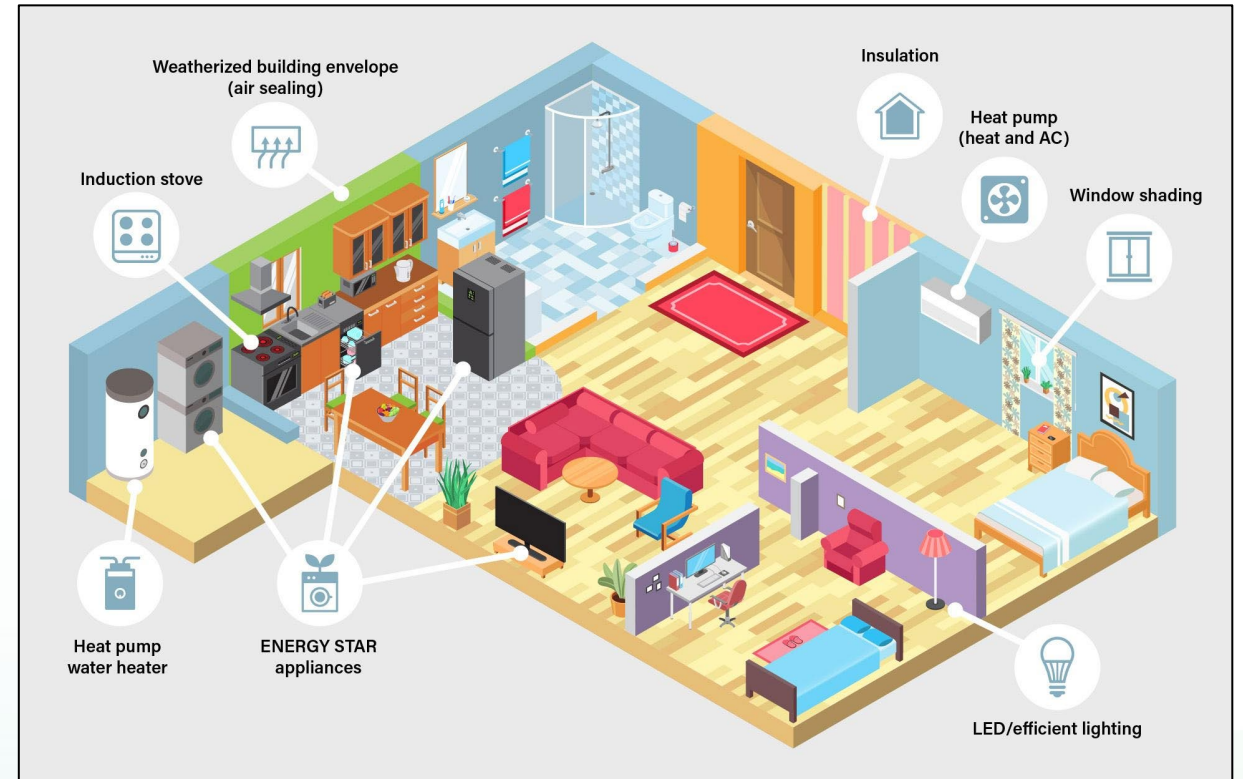
All building retrofits conducted by program must include:

- Installation of heat pump for space heating and cooling or heat pump water heater
- Following the retrofit, at least two of these four end uses must be electric:
 - Space heating
 - Water heating
 - Cooking
 - Clothes drying



Statewide Direct Install Program: Eligible Measures

- Heating, Cooling, and Building Envelope
 - Heat pump for space heating and cooling
 - Duct testing/sealing
 - Smart thermostat
 - Ceiling fan, whole-house fan
 - Air sealing, insulation
- Water Heating
 - Heat pump water heater
 - Low-flow showerheads and faucets
- Cooking: Induction range or cooktop
- Laundry: Electric clothes dryer
- Lighting: LED lights
- Air Quality: Efficient air filters
- Electrical wiring and panel upsizing
- Remediation



Source: ACEEE

} Subject to cost caps



Statewide Direct Install Program: Electrical/Remediation Cost Caps

| Household Income | Average* Per-Home/Unit Cost Cap for Electrical and Remediation Measures |
|-------------------------------|---|
| Low Income ($\leq 80\%$ AMI) | \$5,000 |
| Moderate Income (80-120% AMI) | \$3,000 |

* Capping the average, rather than per-home, remediation cost will allow the program to serve homes with a range of remediation needs.



Program Coordination and Incentive Layering

- Encouraged coordination with relevant federal, state, utility, regional, and/or local programs
- Complementary funding sources should be applied to a project prior to Equitable Building Decarbonization funds, whenever possible
- Program coordination principles:
 - Minimize complexity
 - Comply with legal and regulatory requirements
 - Total project funding does not exceed actual project cost





Tenant Protection

TENANT PROTECTION



Tenant Information

- Information about project and tenants' rights to be provided in the predominant languages spoken in community

Temporary Displacement

- Projects should be designed to avoid/reduce temporary displacement
- If temporary displacement is needed, tenants have right to return to same unit

Eviction

- Property owner must commit not to evict tenant without just cause

Rent Increases

- Property owner must commit not to increase rent as a result of improvements funded by program



Workforce Standards and Requirements

Prevailing Wage

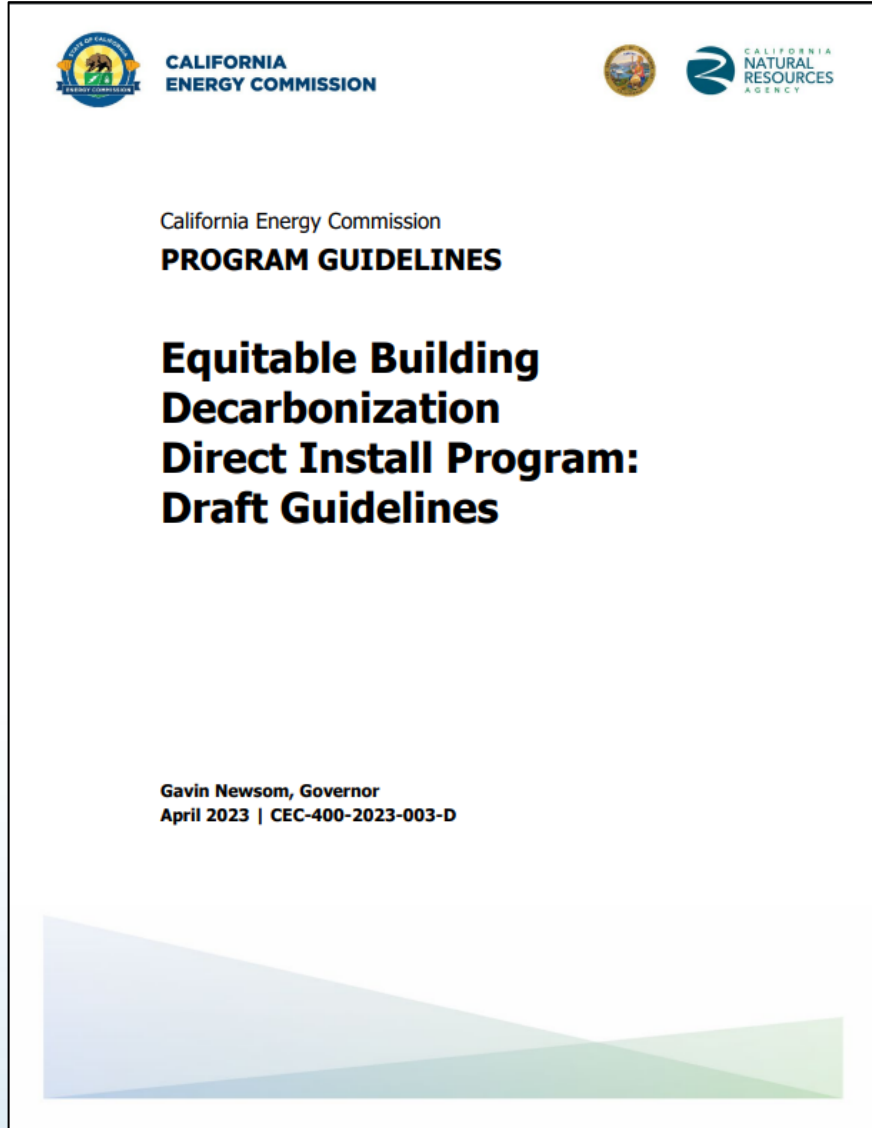
- Statute requires:
“Projects funded pursuant to the direct install program shall be performed by workers paid prevailing wage where possible and when applicable.”
- Administrators should assume prevailing wage requirements in California Labor Code apply
- Administrators are responsible for ensuring subcontractor compliance

Administrators to develop **Workforce Plans** that address:

- Preference for local contractors and contractors that met specified criteria
- Training opportunities for contractors and workers
- Bundling of projects



More Information



<https://www.energy.ca.gov/publications/2023/equitable-building-decarbonization-direct-install-program-draft-guidelines>



Federal Inflation Reduction Act Residential Energy Rebates

IRA Residential Rebate Funding for California

| Homeowner Managing Energy Savings HOMES | High Efficiency Electric Home Rebate Program HEEHRA | Total Allocation Amount for California |
|---|---|---|
| \$292M | + \$290M | = \$582M |

IRA HOMES and HEEHRA Programs

| HOMES Efficiency \$292 million | HEEHRA Electrification \$290 million |
|--|--|
| <p>Whole-house performance-based rebates</p> <ul style="list-style-type: none">• Eligible applicants: Homeowners or aggregators• For single-family homes, program specifies whether modeled or measured energy savings will be required based on amount of energy savings• Multifamily buildings with 50% or more of dwelling units occupied by LMI households• Rebates based on measured energy savings• Rebates up to \$8,000 | <p>Point-of-sale rebates</p> <ul style="list-style-type: none">• Eligible applicants: LMI households, owners of eligible LMI multifamily buildings, and a governmental, commercial, or nonprofit entity carrying out a project for LMI household or LMI multifamily building owner• Project must include purchase and installation of one or more specified items and meet program requirements• Items must be ENERGY STAR® certified, if applicable• Rebates up to \$14,000 |

California HOMES and HEEHRA Timetable

| Anticipated Date | Activity |
|------------------|---|
| Ongoing | Data gathering, outreach & local coordination |
| March 2023 | Response to U.S. DOE Request for Information |
| Summer 2023 | U.S. DOE Guidance Published |
| 2023/2024 | CEC Workshops & Program Development |
| Winter 2024 | U.S. DOE awards funding |
| 2024 | Programs Launch – Funds to Public |



Other Residential Energy Incentive Programs in Your Region

BayREN Home+ Incentive Measures

| Operations and Maintenance Measures | Rebate Amount |
|--|---------------|
| Duct sealing or replacement ≤ 5% total leakage | \$500.00 |

| Building Shell Measures | Rebate Amount |
|---|---------------|
| Attic insulation ≥ R-44 | \$1000.00 max |
| Wall insulation ≥ R-13, 2x4 / R-19, 2x6 | \$1000.00 max |

| Water Heating Measures | Rebate Amount |
|---|---------------|
| High Efficiency gas tank water heater | \$400.00 |
| ⚡ Heat pump water heater replacing gas | \$400.00 |
| ⚡ Heat pump water heater replacing electric | \$250.00 |

| Electrification Appliance Measures | Rebate Amount |
|---|---------------|
| ⚡ Induction electric range (no hybrid) or cooktop (must replace existing natural gas range or cooktop) | \$250.00 |
| ⚡ Heat pump clothes dryer ≥ 4.50 Combined Energy Factor (CEF) (must replace existing natural gas clothes dryer / ENERGY STAR) | \$250.00 |

| Heating and Cooling Measures | Rebate Amount |
|--|---------------|
| High Efficiency central gas furnace ≥ 95% AFUE | \$300.00 |
| High Efficiency split central air conditioner ≥ 17 SEER | \$200.00 |
| High Efficiency packaged central air conditioner ≥ 16 SEER | \$200.00 |
| ⚡ High Efficiency heat pump ≥ 17 SEER replacing gas | \$400.00 |
| ⚡ High Efficiency heat pump ≥ 17 SEER replacing electric | \$250.00 |
| Bonus Rebates | Rebate Amount |
| Building air sealing ≥ 30% total leakage reduction | \$150.00 |
| Combustion Appliance Safety (CAS) test-out | \$100.00 |



Roundtable Discussion

Q&A

Public Comments



Roundtable Discussion

Share regional challenges related to clean energy and healthy homes

Program will be implemented in phases, where should it start? What criteria should be used to identify initial communities? Is there a specific selection process recommended?

What tenant protections should be included in program?
What local organizations work with tenant protections?

Are existing contractors | workforce in the region familiar with installing heat-pumps and other all-electric equipment?

Who should CEC partner with in this region? Do existing programs pay for deferred maintenance costs?

What types of services should program implementers (and CBOs) provide?

What should CEC know about your community's needs?



Q&A

Instruction

- 3 minutes or less per person
- 1 representative per organization

In-person

- Raise your hand and we will pass the mic

Zoom App/Online

- Click “raise hand”

Telephone

- Press *9 to raise hand
- Press *6 to (un)mute

When called upon

- Zoom Hosts will open your line
- Unmute, spell name, state affiliation, if any for the record, then begin your comment.

For Phone Participation: Dial (669) 900-6833 or (888) 475-4499 Enter Webinar ID: 820 5851 8489



Public Comment

Instruction

- 3 minutes or less per person
- 1 representative per organization

In-person

- Raise your hand and we will pass the mic

Zoom App/Online

- Click “raise hand”

Telephone

- Press *9 to raise hand
- Press *6 to (un)mute

When called upon

- Zoom Hosts will open your line
- Unmute, spell name, state affiliation, if any for the record, then begin your comment.

Written Comments:

- Visit [Equitable Building Decarbonization Program | California Energy Commission](#)
- Click on [California Energy Commission : e-comment : Submit Comment](#)

3-MINUTE TIMER





Next Steps





Public Workshops and Listening Sessions

| Date | Location | Focus |
|---------------|------------------|---|
| June 6, 2023 | San Francisco | Regional Workshop |
| June 9, 2023 | Los Angeles | Regional Workshop |
| June 12, 2023 | Santa Rosa | Regional Workshop |
| June 15, 2023 | Indio | Regional Workshop |
| June 23, 2023 | Fresno | Regional Workshop |
| June 10, 2023 | Online (Weekend) | Expanded Community Feedback Opportunity |
| June 21, 2023 | Online (Evening) | Expanded Community Feedback Opportunity |



Empower Innovation



COMMUNITY EVENTS
FUNDING RESOURCES

SIGN UP

LOGIN

EN



EQUITABLE BUILDING DECARBONIZATION PROGRAM

< ALL FUNDING OPPORTUNITIES

Source: [Empower Innovation](https://www.empowerinnovation.net/en/custom/funding/view/38760): <https://www.empowerinnovation.net/en/custom/funding/view/38760>



Timeline for Direct Install Program

| Date | Milestone |
|------------------|---|
| 9/6/2022 | AB 209 and AB 179 signed |
| 12/9/2022 | Request for Information released |
| 12/13/2022 | Public workshop on program scoping |
| 1/20/2023 | Deadline for public comments (extended at stakeholder request) |
| Feb-April 2023 | Comment review and development of draft guidelines for direct install program |
| 5/4/2023 | Release draft guidelines |
| ★ May-June 2023 | Public workshops on draft guidelines, Tribal listening sessions, comment period |
| 6/30/2023 | Deadline for public comments |
| Summer 2023 | Staff review comments and finalize guidelines on Statewide Direct Install Program |
| Fall 2023 | CEC adoption hearing on guidelines |
| Fall/Winter 2023 | Direct install program administrators selected through competitive solicitation |
| 2024-2025 | Administrator ramp-up and direct install program roll-out in initial communities |

Subject to change.



We want your input!

Tell us about your experience!

Complete this short questionnaire





Comments Due by June 30, 2023 on Current Draft Guidelines

Written comments may be submitted to public docket
by 5:00 p.m. on **June 30, 2023**

Please see [notice](#) for further information:

<https://efiling.energy.ca.gov/GetDocument.aspx?tn=249981>



Thank you for your patience

The in-person location is currently having technical difficulties.

Please see the following web page for additional opportunities to provide input:

<https://www.energy.ca.gov/programs-and-topics/programs/equitable-building-decarbonization-program>



Break

Please return at 2:40 pm