

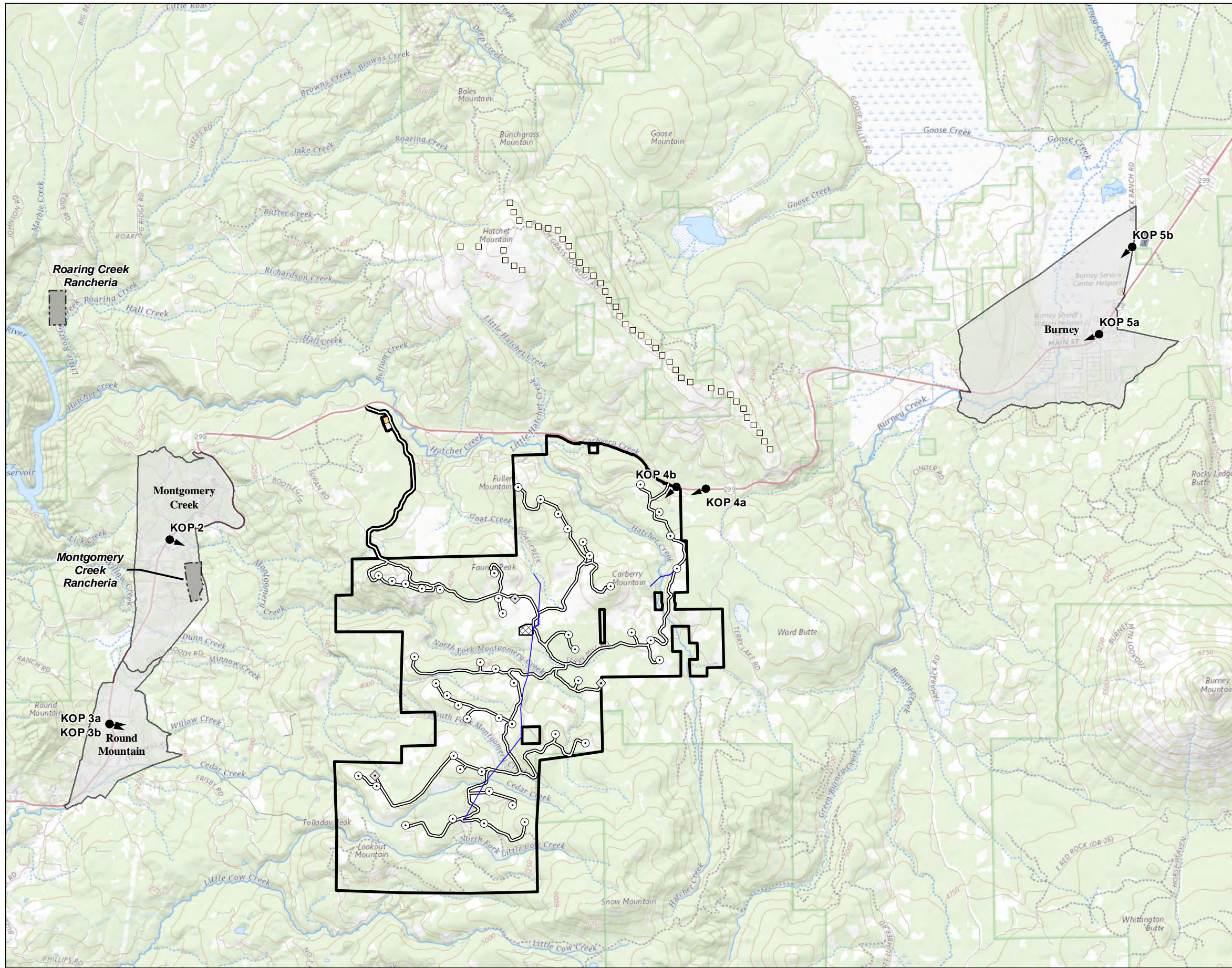
**DOCKETED**

<b>Docket Number:</b>	23-OPT-01
<b>Project Title:</b>	Fountain Wind Project
<b>TN #:</b>	250566
<b>Document Title:</b>	fwp_visual_resources_addendum_pt2
<b>Description:</b>	N/A
<b>Filer:</b>	Caitlin Barns
<b>Organization:</b>	Stantec Consulting Services, Inc.
<b>Submitter Role:</b>	Applicant Consultant
<b>Submission Date:</b>	6/9/2023 11:29:56 AM
<b>Docketed Date:</b>	6/9/2023

# FIGURES

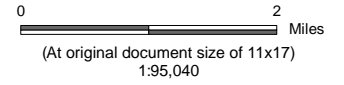


V:\11950\active\_Tasks\Owner and other Non-BCI 956 - Jobs\1185703743\03\_data\gis\cad\gis\mxd\Views\shd\2023\FinWind\VS\_Figure 1\_ProjectLayout.mxd Revised: 2023-06-05 By: gearpeniler



**Legend**

- Key Observation Point
- ⊙ Turbine Location
- ◇ Met Tower Location
- Overhead Collection
- Access Road
- O&M Facility
- ▣ Substation/Switchyard Site
- ▭ Project Area
- Hatchet Ridge Wind Turbine
- ▨ Tribal Land
- ▭ Jurisdictional Boundary



- Notes**
1. Coordinate System: NAD 1983 UTM Zone 10N
  2. Data Sources: Shasta County GIS Division
  3. Background: The USGS National Map



**Project Location**  
Shasta County  
California

Prepared by GC on 2023-06-01  
TR Review by JH on 2023-06-01  
IR Review by CB on 2023-06-01

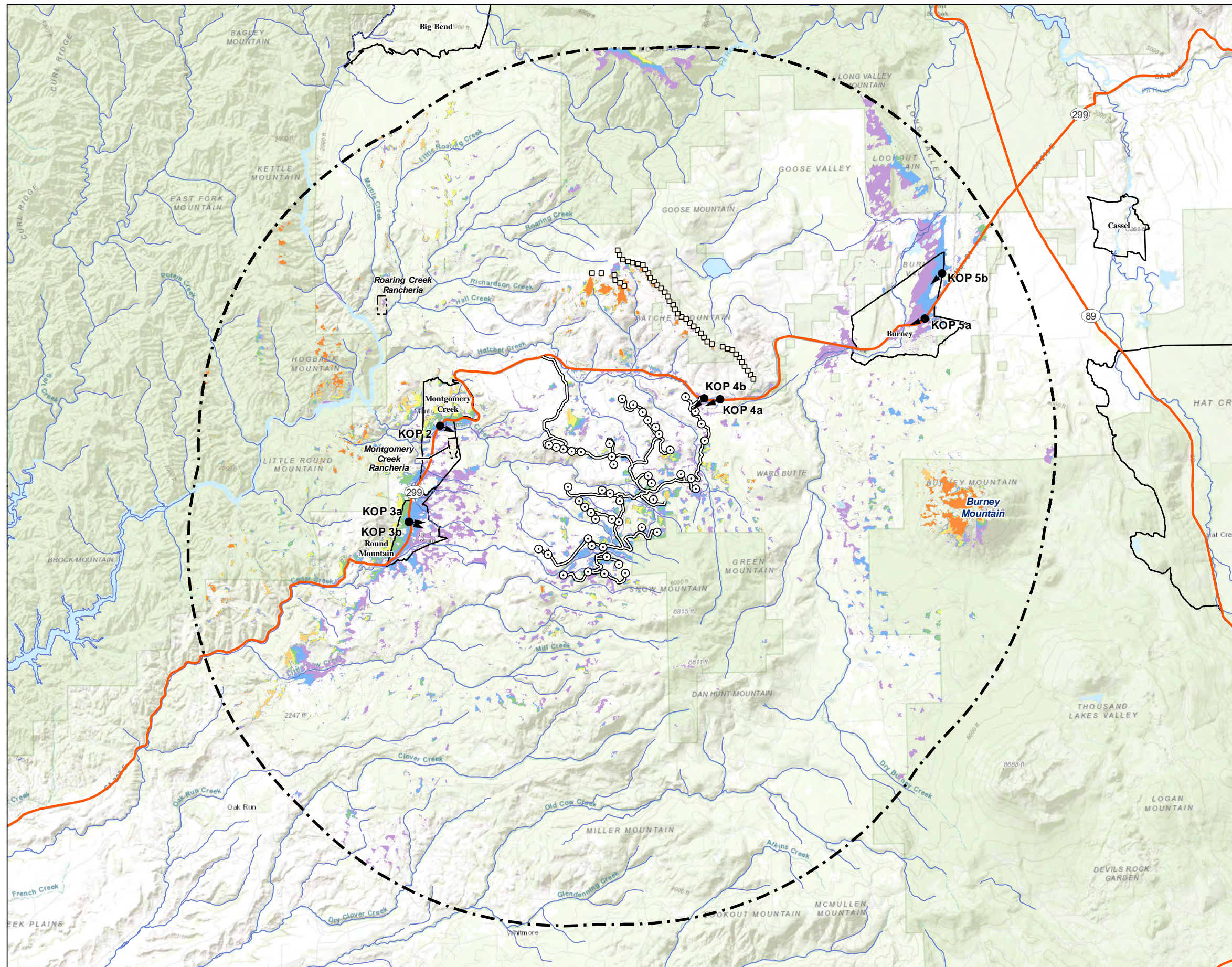
**Client/Project**  
Fountain Wind LLC  
Fountain Wind Project  
Visual Resources Technical Report Addendum

203723159

**Figure No.**  
**1**

**Title**  
**Revised Project Layout and Key Observation Points**

V:\11959\active\Task Owner and other Non-BCI\956\_Joia\1185703743\03\_data\tagis\_cad\tagis\mxd\Views\10-MileBladeTip\VS.mxd Revised: 2023-06-05



**Legend**

- Key Observation Point (KOP)
- ⊙ Turbine Location
- Access Road
- ⌘ 10-Mile Radius from Project Footprint
- 10-Mile Radius Viewshed – Turbine Blade Tip
- Number of Potential Turbines Visible
- 1 - 8
- 9 - 16
- 17 - 24
- 25 - 32
- 33 - 40
- 41 - 48
- Hatchet Ridge Wind Turbine
- ⌘ Tribal Land
- ▭ Jurisdictional Boundary



0 3 Miles  
 (At original document size of 11x17)  
 1:182,000

- Notes**
1. Coordinate System: NAD 1983 UTM Zone 10N
  2. Data Sources: USGS
  3. Background: ESRI World Topographic Map



**Project Location**  
 Shasta County  
 California

Prepared by GC on 2023-06-01  
 TR Review by JH on 2023-06-01  
 IR Review by CB on 2023-06-01

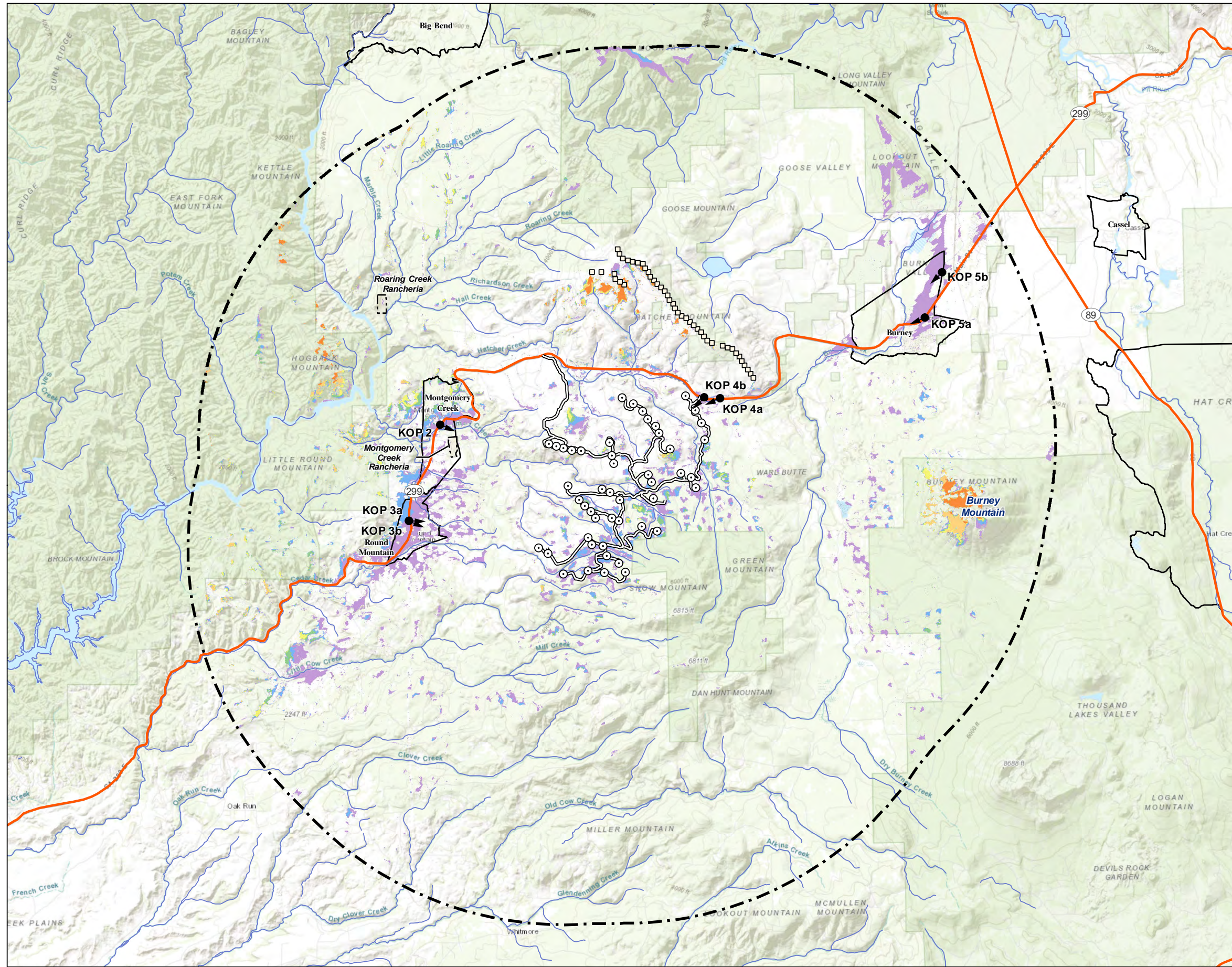
**Client/Project**  
 Fountain Wind LLC  
 Fountain Wind Project  
 Visual Resources Technical Report Addendum

203723159

**Figure No.**  
**2**

**Title**  
**10-Mile Radius Viewshed  
 Turbine Blade Tip**

V:\11959\active\Task Owner and other Non-BC1956\_Joia\185703743\03\_data\tagis\_cad\tagis\Views\10-MileRadiusViewshed\2023\FinWind\VS\_Figure3\_10MileHubVS.mxd Revise: 2023-06-05



**Legend**

- Key Observation Point (KOP)
- Turbine Location
- Access Road
- ⋯ 10-Mile Radius from Project Footprint
- 10-Mile Radius Viewshed – Hub Height
- Number of Potential Turbines Visible
- 1 - 8
- 9 - 16
- 17 - 24
- 25 - 32
- 33 - 40
- 41 - 48
- Hatchet Ridge Wind Turbine
- ⋯ Tribal Land
- Jurisdictional Boundary



0 3 Miles  
 (At original document size of 11x17)  
 1:182,000

- Notes**
1. Coordinate System: NAD 1983 UTM Zone 10N
  2. Data Sources: USGS
  3. Background: ESRI World Topographic Map



**Project Location**  
 Shasta County  
 California

Prepared by GC on 2023-06-01  
 TR Review by JH on 2023-06-01  
 IR Review by CB on 2023-06-01

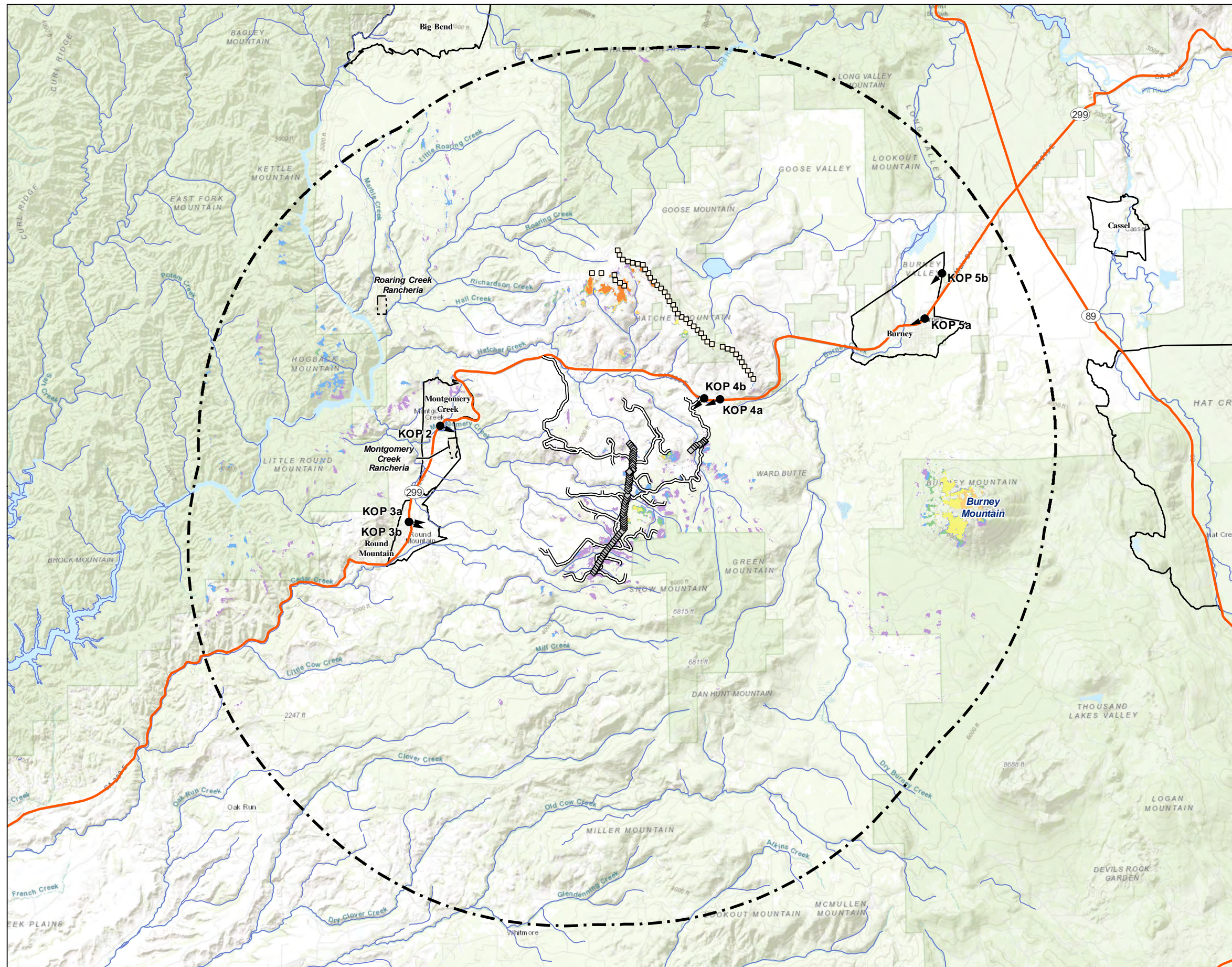
**Client/Project**  
 Fountain Wind LLC  
 Fountain Wind Project  
 Visual Resources Technical Report Addendum

203723159

**Figure No.**  
**3**

**Title**  
**10-Mile Radius Viewshed  
 Hub Height**

V:\11959\active\Task\_Owner and other Non-BCI\956\_Joist\1857\03743\03\_data\tagis\_cad\gismxd\Views\10-MileRadiusViewshed\2023\FinWind\VS\_Figure4\_10MilePoleVS.mxd Revised: 2023-06-05



**Legend**

- Key Observation Point (KOP)
- ◆ Collector Pole
- Access Road
- ⊞ 10-Mile Radius from Project Footprint
- ⊞ 10-Mile Radius Viewshed – Overhead Collector Pole
- Number of Potential Poles Visible
- 1 - 10
- 11 - 20
- 21 - 30
- 31 - 40
- 41 - 50
- 51 - 68
- Hatchet Ridge Wind Turbine
- ⊞ Tribal Land
- ▭ Jurisdictional Boundary



0 3 Miles  
(At original document size of 11x17)  
1:182,000

- Notes**
1. Coordinate System: NAD 1983 UTM Zone 10N
  2. Data Sources: USGS
  3. Background: ESRI World Topographic Map



**Project Location**  
Shasta County  
California

Prepared by GC on 2023-06-01  
TR Review by JH on 2023-06-01  
IR Review by CB on 2023-06-01

**Client/Project**  
Fountain Wind LLC  
Fountain Wind Project  
Visual Resources Technical Report Addendum

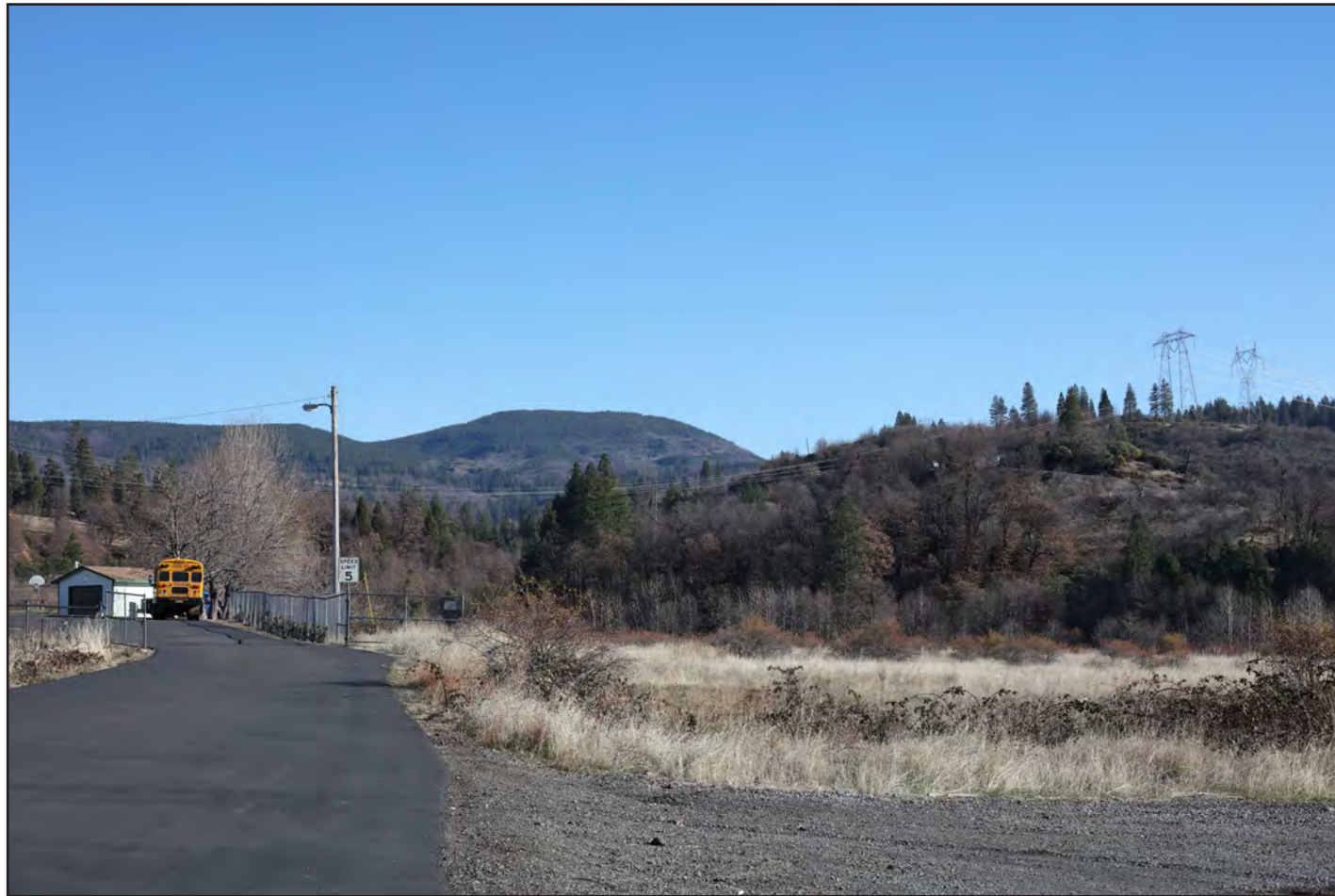
203723159

Figure No.

**4**

Title

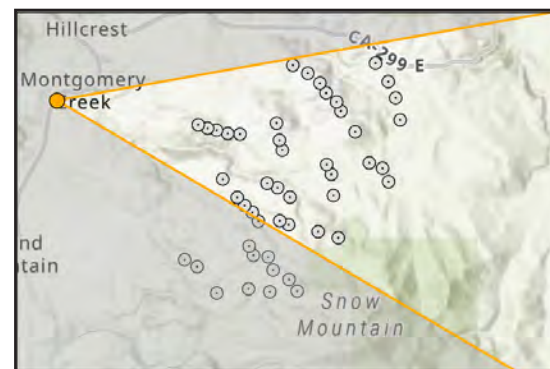
**10-Mile Radius Viewshed  
Overhead Collector Poles**



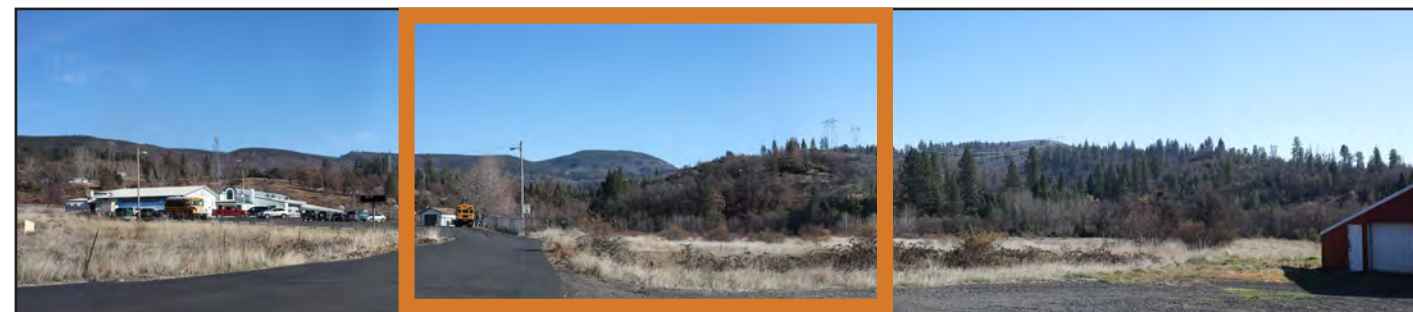
a) View to the east-southeast from the entrance to Montgomery Creek Elementary School from State Route 299.



b) Simulated view from KOP 2. Project turbines would be most visible in the center of the view, between approximately 3 and 5 miles away.



KOP view orientation, location, and proximity to Project features.

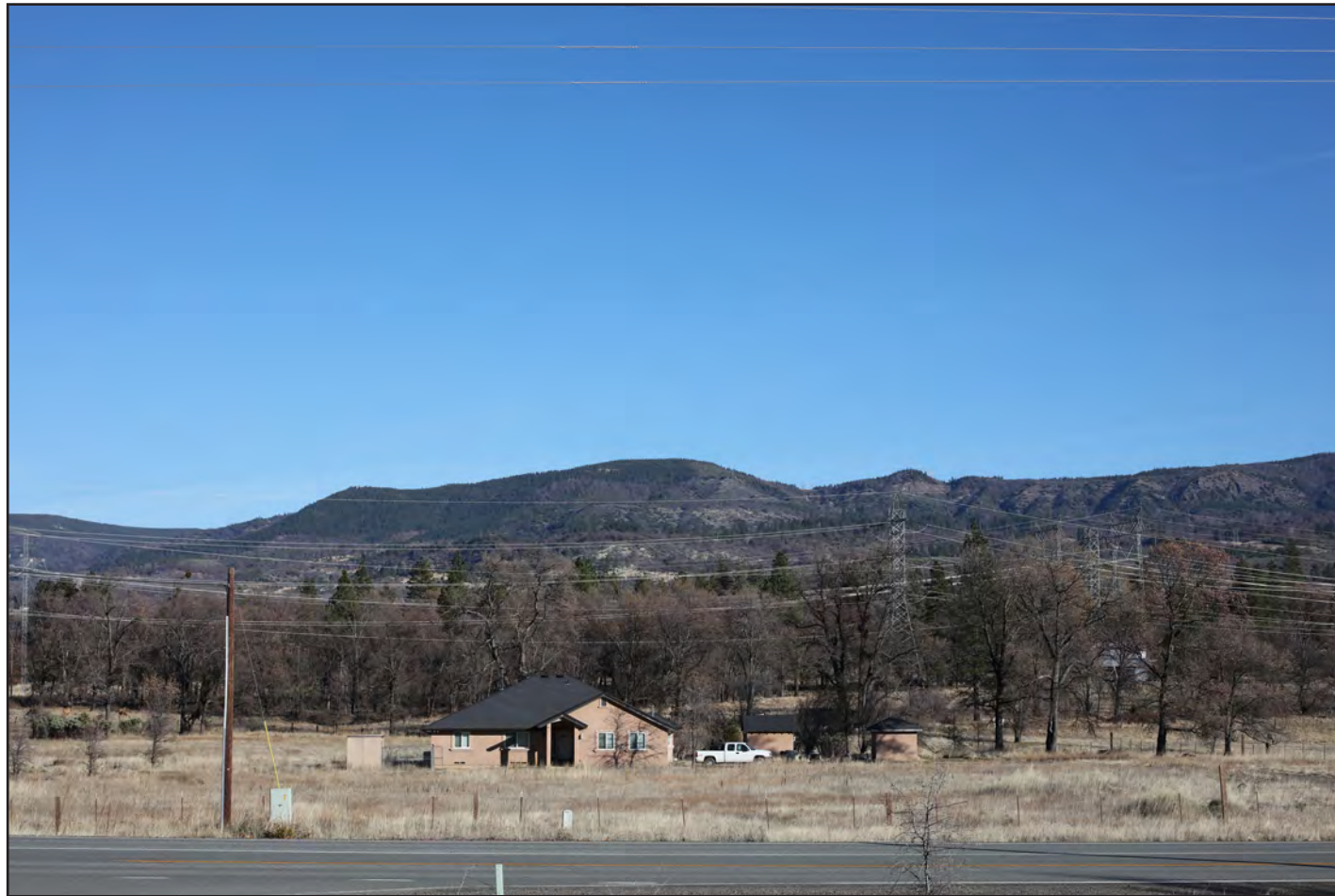


Existing view from KOP 2 (outlined in orange) within broader context.

Latitude / Longitude:	40° 50.576'N 121° 55.342'W
Approximate Distance from Nearest Project Feature:	3.2 miles
Photography Date / Time:	December 13, 2018 / 2:18 p.m.
Camera Make / Model:	Canon EOS 5DS
Focal Length:	50mm
Photographer:	Stantec



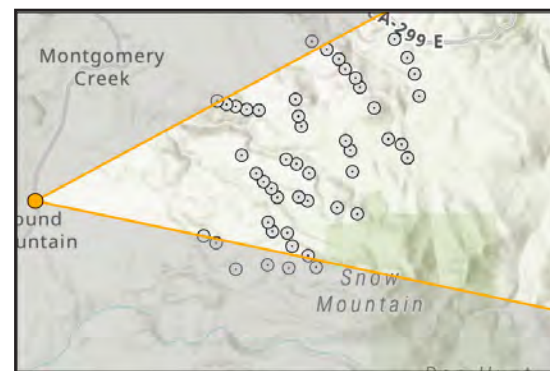




a) View to the east from the Round Mountain Post Office, just south of the Hill Country Community Clinic.



b) Simulated view from KOP 3a. The most visible Project turbines would be in the left of the view, around 5 miles away. Other turbines present in this view would be mostly obscured by the ridgeline.



KOP view orientation, location, and proximity to Project features.



Existing view from KOP 3a (outlined in orange) within broader context.

Latitude / Longitude:	36°7.002'N 76°33.543'W
Approximate Distance from Nearest Project Feature:	1.1 miles
Photography Date / Time:	December 13, 2018 / 3:18 p.m.
Camera Make / Model:	Canon EOS 5DS
Focal Length:	50mm
Photographer:	Stantec

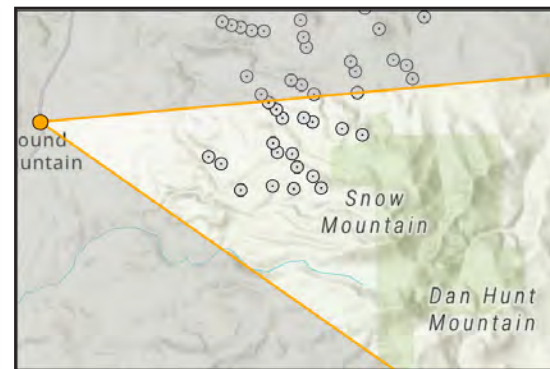




a) View to the east-southeast from the Round Mountain Post Office, just south of the Hill Country Community Clinic.



b) Simulated view from KOP 3b. The two Project turbines most visible in the center of the view would be 3.8 and 4.1 miles away.



KOP view orientation, location, and proximity to Project features.



Existing view from KOP 3b (outlined in orange) within broader context.

Latitude / Longitude:	40° 48.199'N 121° 56.407'W
Approximate Distance from Nearest Project Feature:	3.8 miles
Photography Date / Time:	December 13, 2018 / 3:18 p.m.
Camera Make / Model:	Canon EOS 5DS
Focal Length:	50mm
Photographer:	Stantec

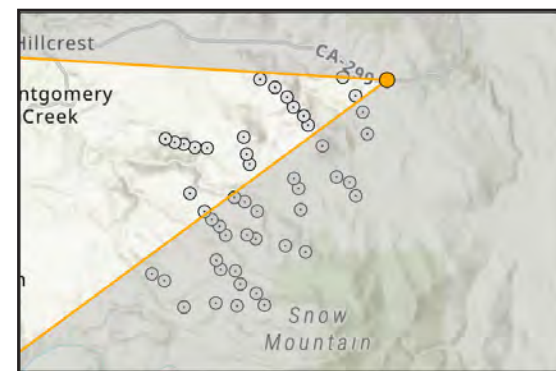




a) View to the west-southwest from SR 299, west of the Hatchet Ridge Wind Farm access road. Variably dense roadside vegetation along this segment of SR 299 limits visibility of the Project site.



b) Simulated view from KOP 4a. Project turbines would be visible to different extents at distances of 0.8 mile to 3.4 miles away.



KOP view orientation, location, and proximity to Project features.



Existing view from KOP 4a (outlined in orange) within broader context.

Latitude / Longitude:	40° 51.144'N 121° 46.197'W
Approximate Distance from Nearest Project Feature:	0.8 mile
Photography Date / Time:	May 12, 2023 / 10:46 a.m.
Camera Make / Model:	Canon EOS 5DS
Focal Length:	50mm
Photographer:	Stantec





a) View to the southwest from SR 299, just east of the Project's eastern access road. The ridgeline along the back of the view is within 0.5 mile of the viewpoint.

b) Simulated view from KOP 4b. The clearing of trees for the access road is apparent from this location.



KOP view orientation, location, and proximity to Project features.



Existing view from KOP 4b (outlined in orange) within broader context.

Latitude / Longitude:	40° 51.176'N 121° 46.702'W
Approximate Distance from Nearest Project Feature:	0.2 mile
Photography Date / Time:	May 12, 2023 / 11:20 a.m.
Camera Make / Model:	Canon EOS 5DS
Focal Length:	50mm
Photographer:	Stantec



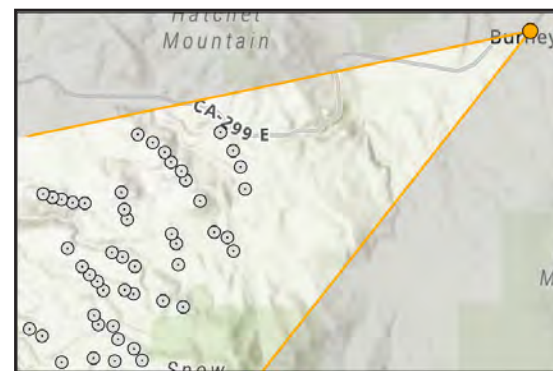




a) View to the west-southwest from downtown Burney. The existing Hatched Ridge Wind project is visible in the right portion of the view, just over 5 miles away.



b) Simulated view from KOP 5a. Project turbines would be visible near the center of the view, to the left of existing Hatched Ridge turbines, between 7 and 8.5 miles away.



KOP view orientation, location, and proximity to Project features.



Existing view from KOP 5a (outlined in orange) within broader context.

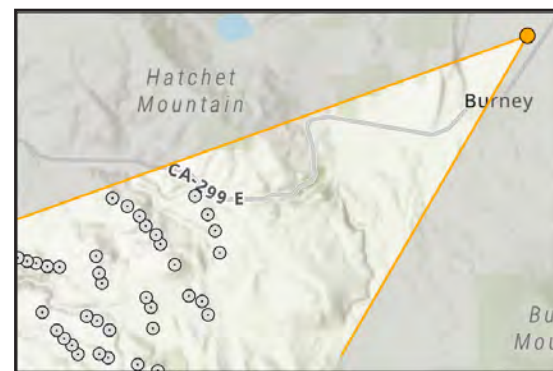
Latitude / Longitude:	40° 53.070'N 121° 39.465'W
Approximate Distance from Nearest Project Feature:	7 miles
Photography Date / Time:	April 18, 2019 / 11:08 a.m.
Camera Make / Model:	Canon EOS 5DS
Focal Length:	50mm
Photographer:	Stantec





a) View to the southwest from Black Ranch Road in north Burney. Hatchet Ridge Wind project turbines are visible in the right third of the view, as close as 6.2 miles away.

b) Simulated view from KOP 5b. Project turbines would appear to the left of and beyond Hatchet Ridge turbines and be visible as close as just over 8 miles away.



KOP view orientation, location, and proximity to Project features.



Existing view from KOP 5b (outlined in orange) within broader context.

Latitude / Longitude:	40° 54.192'N 121° 38.875'W
Approximate Distance from Nearest Project Feature:	8.1 miles
Photography Date / Time:	May 12, 2023 / 9:30 a.m.
Camera Make / Model:	Canon EOS 5DS
Focal Length:	50mm
Photographer:	Stantec

