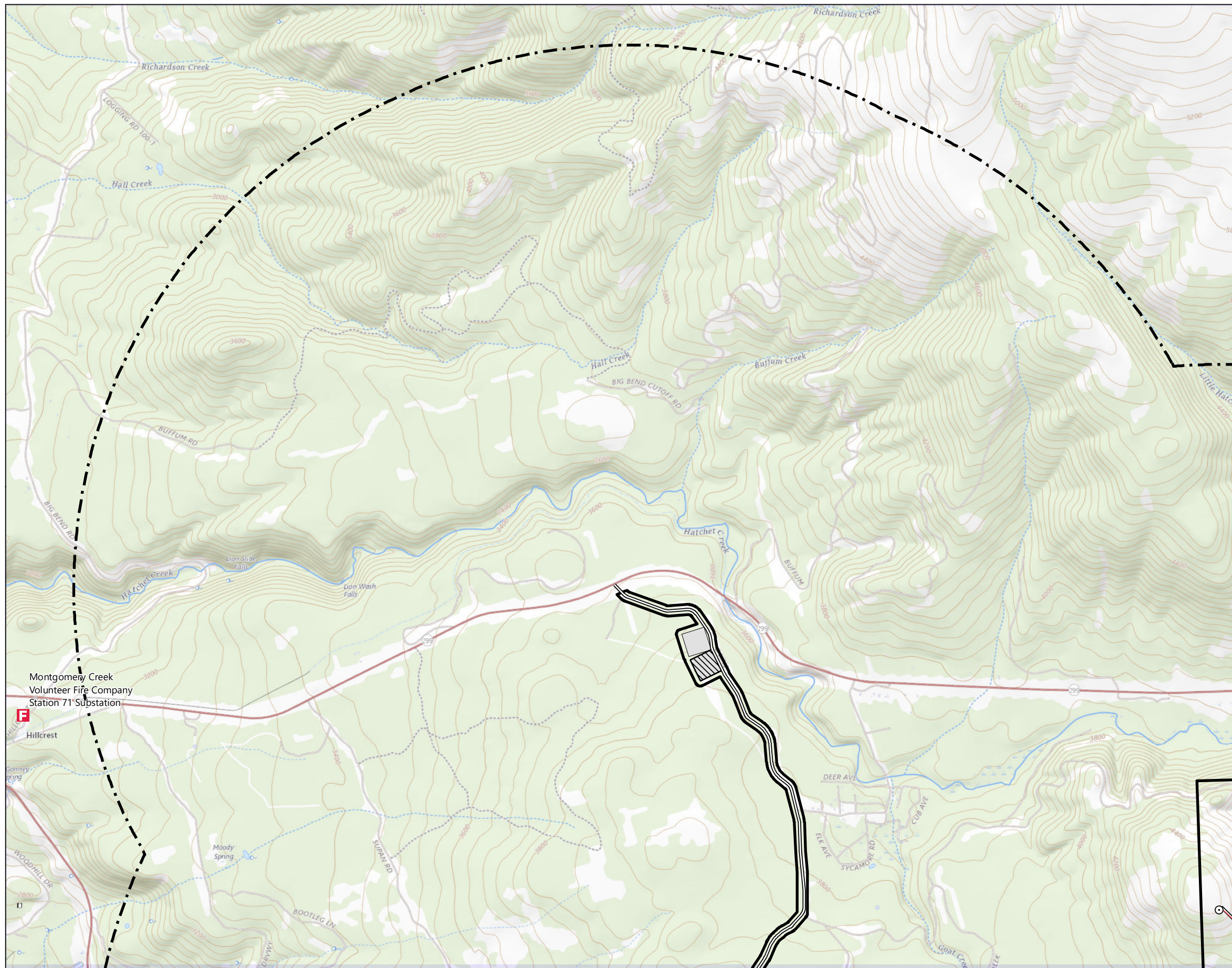


<b>DOCKETED</b>	
<b>Docket Number:</b>	23-OPT-01
<b>Project Title:</b>	Fountain Wind Project
<b>TN #:</b>	250329
<b>Document Title:</b>	HAZ-04_fwp_HazMaterial
<b>Description:</b>	N/A
<b>Filer:</b>	Caitlin Barns
<b>Organization:</b>	Stantec Consulting Services, Inc.
<b>Submitter Role:</b>	Applicant Consultant
<b>Submission Date:</b>	5/25/2023 9:39:56 AM
<b>Docketed Date:</b>	5/25/2023

V:\11950\active\Task\_Owner and other Non-BCI\956\_Joist\185703743\03\_data\tagis\_cad\tagis\mxd\2023\HAZ-04-HazMaterial.mxd Revised: 2023-05-11 By: gcarpentier



Legend

- Fire Station
- Turbine Location
- Met Tower Location
- Microwave Tower Location
- Storage Shed Location
- Overhead Collection
- Underground Collection
- Access Road
- Batch Plant
- O&M Facility
- Staging Area
- Substation/Switchyard Site
- Project Area
- 2 miles from the Project Site



0 2,000 Feet  
(At original document size of 11x17)  
1:24,000

Notes

1. Coordinate System: NAD 1983 UTM Zone 10N
2. Data Sources: Shasta County GIS Division
3. Background: The USGS National Map



Project Location  
Shasta County  
California

Prepared by GC on 2023-05-11  
TR Review by BB on 2023-05-11  
IR Review by CB on 2023-05-11

Client/Project  
Fountain Wind LLC  
Fountain Wind Project

203723159

Figure No.

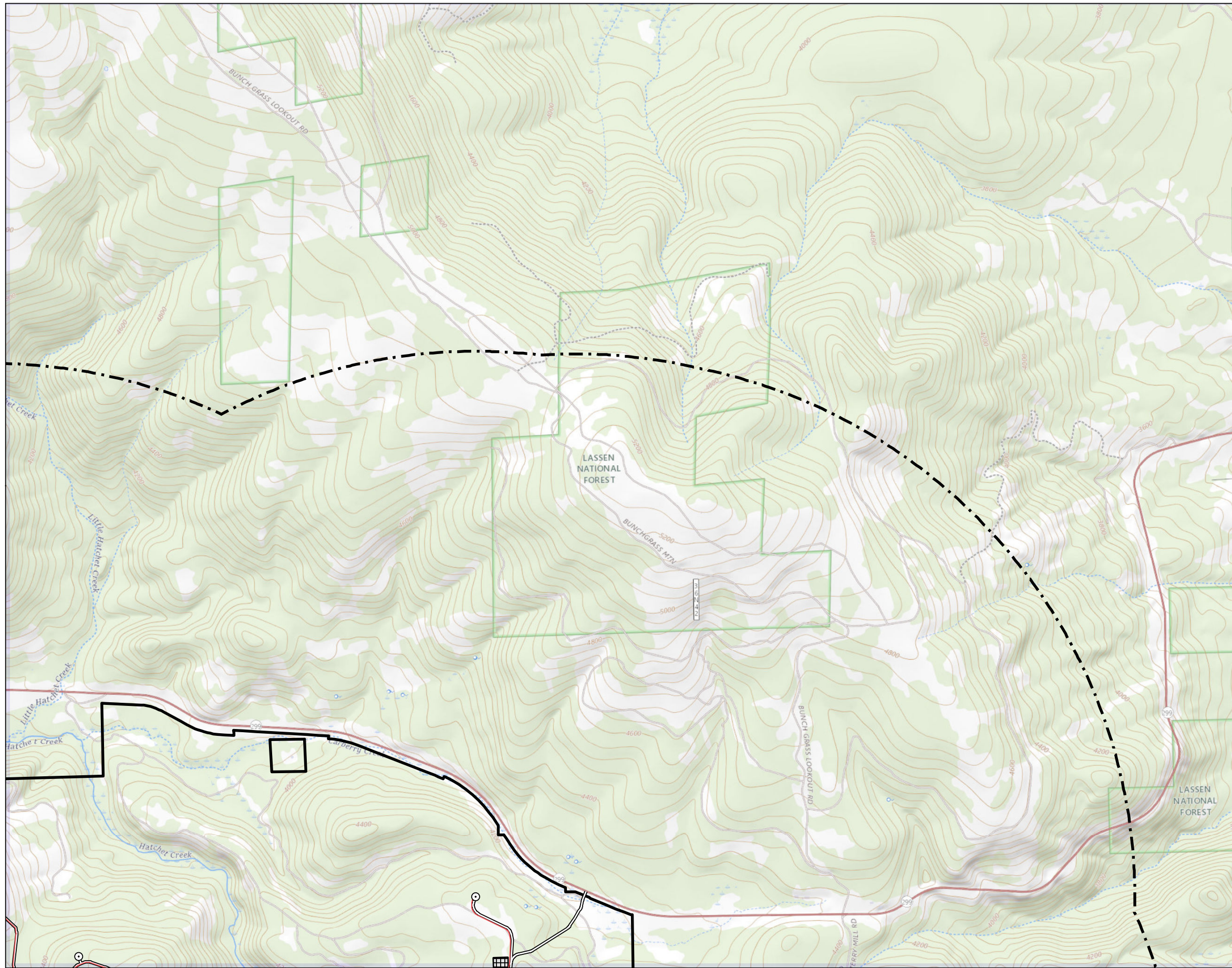
HAZ-04

**DRAFT**

Title

**2-mile Radius Surrounding Project for  
Hazards Materials Release Analysis**

V:\11950\active\Task\_Owner and other Non-BCI\956\_Joist\185703743\03\_data\glg\_cad\glg\mxd\2023\HAZ-04-HazMaterial.mxd Revised: 2023-05-11 By: gcarpentier



Legend

- Fire Station
- Turbine Location
- Met Tower Location
- Microwave Tower Location
- Storage Shed Location
- Overhead Collection
- Underground Collection
- Access Road
- Batch Plant
- O&M Facility
- Staging Area
- Substation/Switchyard Site
- Project Area
- 2 miles from the Project Site



0 2,000 Feet  
(At original document size of 11x17)  
1:24,000

Notes

1. Coordinate System: NAD 1983 UTM Zone 10N
2. Data Sources: Shasta County GIS Division
3. Background: The USGS National Map



Project Location  
Shasta County  
California

Prepared by GC on 2023-05-11  
TR Review by BB on 2023-05-11  
IR Review by CB on 2023-05-11

Client/Project  
Fountain Wind LLC  
Fountain Wind Project

203723159

Figure No.

**HAZ-04**

**DRAFT**

Title

**Area Potentially Affected by Any Release of Hazardous Materials**

Legend

- Fire Station
- Turbine Location
- Met Tower Location
- Microwave Tower Location
- Storage Shed Location
- Overhead Collection
- Underground Collection
- Access Road
- Batch Plant
- O&M Facility
- Staging Area
- Substation/Switchyard Site
- Project Area
- 2 miles from the Project Site



0 2,000 Feet  
 (At original document size of 11x17)  
 1:24,000

Notes

1. Coordinate System: NAD 1983 UTM Zone 10N
2. Data Sources: Shasta County GIS Division
3. Background: The USGS National Map



Project Location  
 Shasta County  
 California

Prepared by GC on 2023-05-11  
 TR Review by BB on 2023-05-11  
 IR Review by CB on 2023-05-11

Client/Project  
 Fountain Wind LLC  
 Fountain Wind Project

203723159

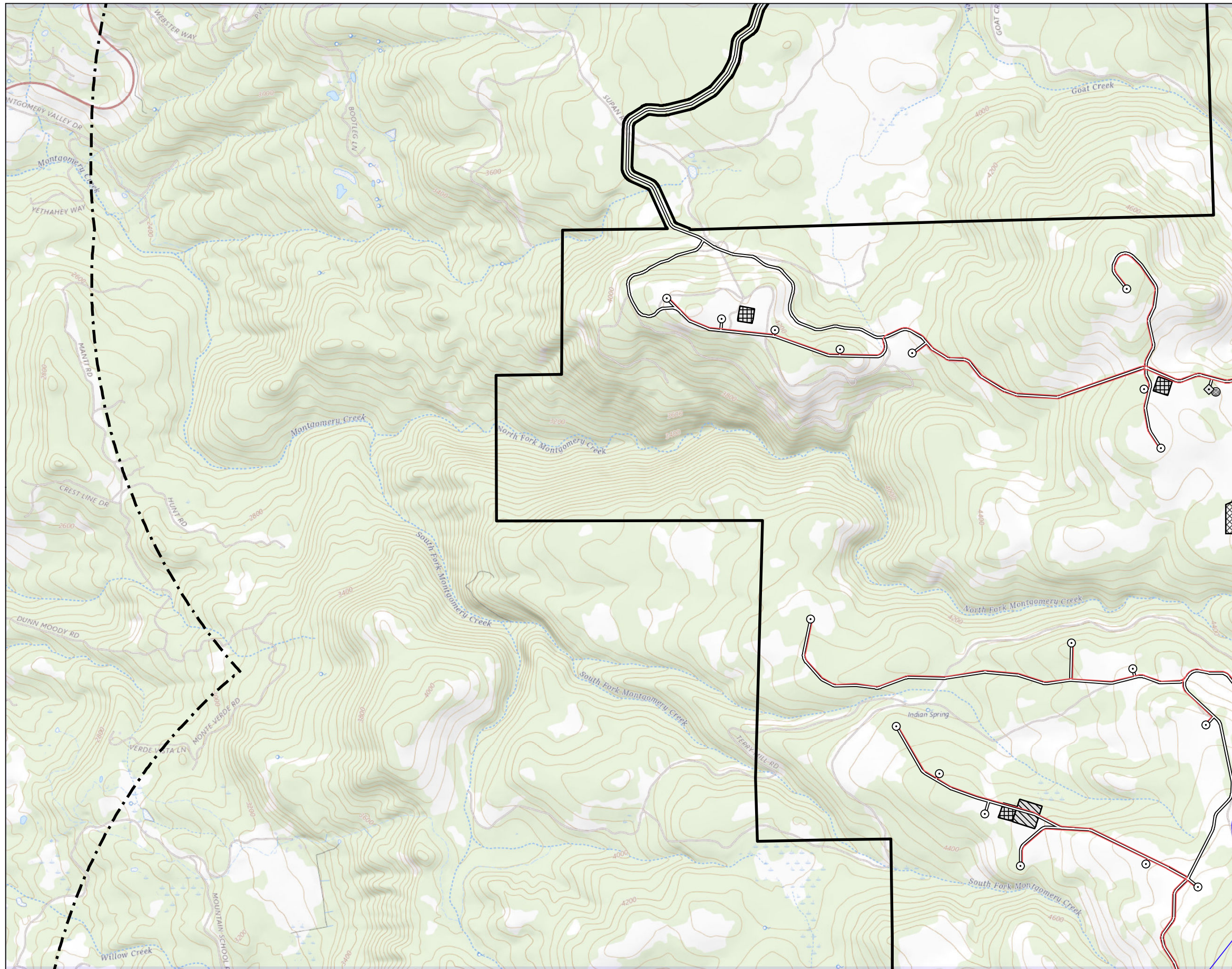
Figure No.

**HAZ-04**

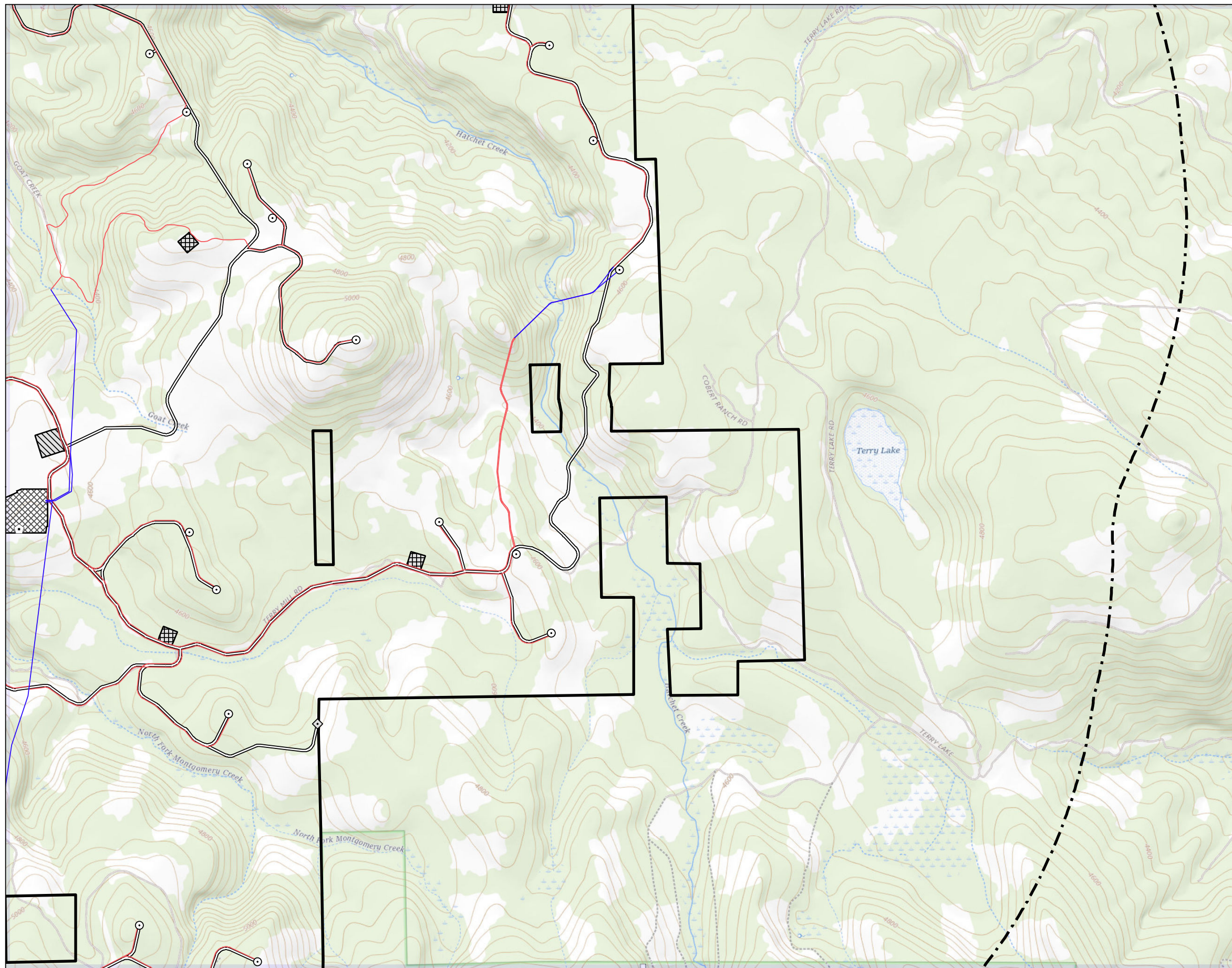
**DRAFT**

Title

**Area Potentially Affected by Any Release of Hazardous Materials**



V:\11950\active\Task\_Owner and other Non-BCI\956\_Joist\185703743\03\_data\tagis\_cad\tagis\mxd\2023\HAZ-04-HazMaterial.mxd Revised: 2023-05-11 By: gcarpentier



Legend

- Fire Station
- Turbine Location
- Met Tower Location
- Microwave Tower Location
- Storage Shed Location
- Overhead Collection
- Underground Collection
- Access Road
- Batch Plant
- O&M Facility
- Staging Area
- Substation/Switchyard Site
- Project Area
- 2 miles from the Project Site



0 2,000 Feet  
(At original document size of 11x17)  
1:24,000

Notes

1. Coordinate System: NAD 1983 UTM Zone 10N
2. Data Sources: Shasta County GIS Division
3. Background: The USGS National Map



Project Location  
Shasta County  
California

Prepared by GC on 2023-05-11  
TR Review by BB on 2023-05-11  
IR Review by CB on 2023-05-11

Client/Project  
Fountain Wind LLC  
Fountain Wind Project

203723159

Figure No.

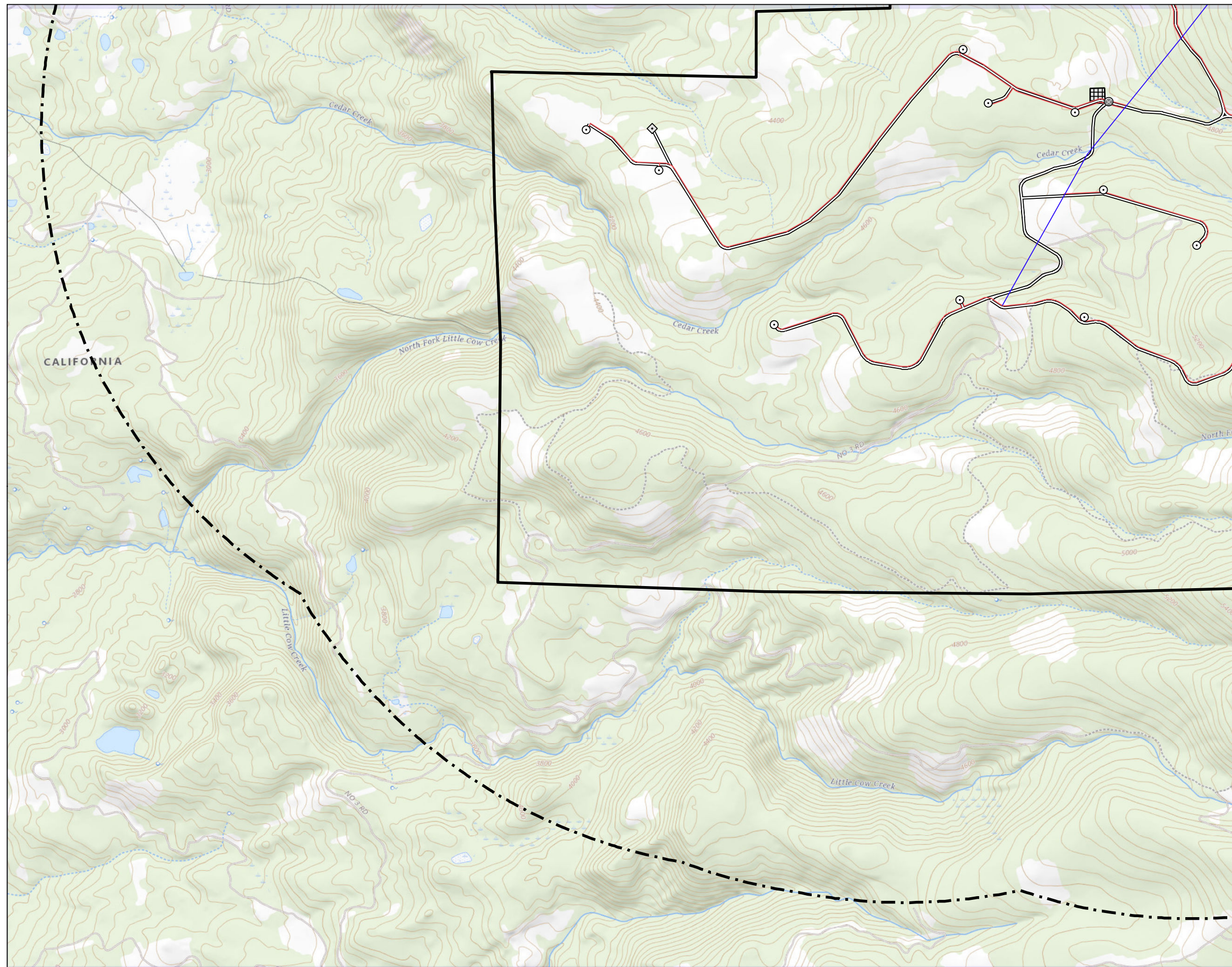
HAZ-04

**DRAFT**

Title

**Area Potentially Affected by Any Release of Hazardous Materials**

V:\11950\active\Task\_Owner and other Non-BCI\956\_Joist\185703743\03\_data\tag\cad\gismxd\2023\HAZ-04-HazMaterial.mxd Revised: 2023-05-11 By: gcarpentier



Legend

- Fire Station
- Turbine Location
- Met Tower Location
- Microwave Tower Location
- Storage Shed Location
- Overhead Collection
- Underground Collection
- Access Road
- Batch Plant
- O&M Facility
- Staging Area
- Substation/Switchyard Site
- Project Area
- 2 miles from the Project Site



0 2,000 Feet  
(At original document size of 11x17)  
1:24,000

- Notes
1. Coordinate System: NAD 1983 UTM Zone 10N
  2. Data Sources: Shasta County GIS Division
  3. Background: The USGS National Map



**Project Location**  
Shasta County  
California

**Client/Project**  
Fountain Wind LLC  
Fountain Wind Project

Prepared by GC on 2023-05-11  
TR Review by BB on 2023-05-11  
IR Review by CB on 2023-05-11

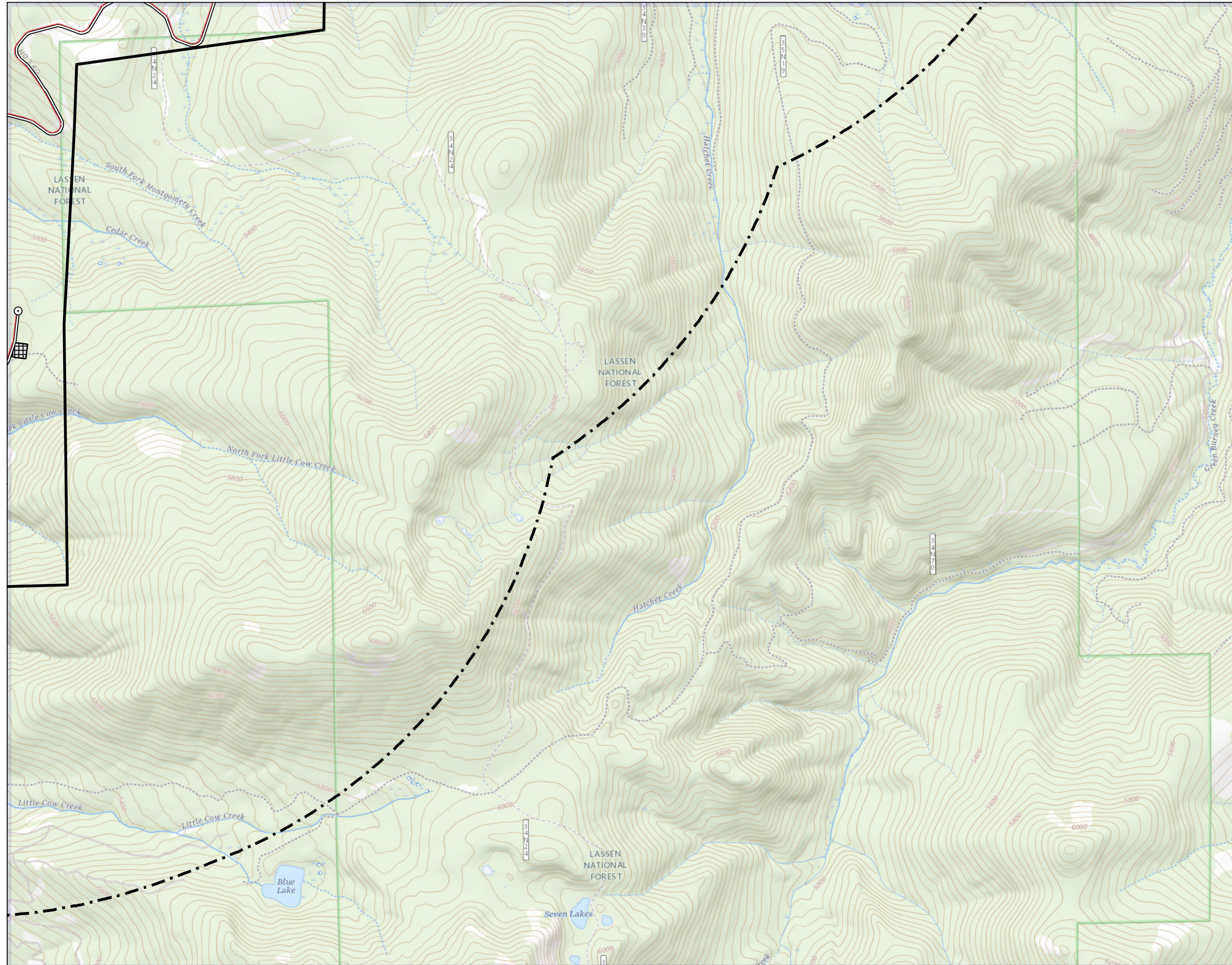
203723159

Figure No.  
**HAZ-04**

**DRAFT**

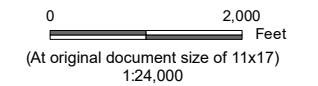
Title  
**Area Potentially Affected by Any Release of Hazardous Materials**

V:\11950\active\Task\_Owner and other Non-BC1956\_Joist185703743\03\_data\tagis\_cad\tagis\mxd\2023\HAZ-04-HazMaterial.mxd Revised: 2023-05-11 By: gcarpentier



Legend

- Fire Station
- Turbine Location
- Met Tower Location
- Microwave Tower Location
- Storage Shed Location
- Overhead Collection
- Underground Collection
- Access Road
- Batch Plant
- O&M Facility
- Staging Area
- Substation/Switchyard Site
- Project Area
- 2 miles from the Project Site



- Notes
1. Coordinate System: NAD 1983 UTM Zone 10N
  2. Data Sources: Shasta County GIS Division
  3. Background: The USGS National Map



**Project Location**  
 Shasta County  
 California

**Client/Project**  
 Fountain Wind LLC  
 Fountain Wind Project

Prepared by GC on 2023-05-11  
 TR Review by BB on 2023-05-11  
 IR Review by CB on 2023-05-11

203723159

Figure No.

**HAZ-04**

**DRAFT**

Title

**Area Potentially Affected by Any Release of Hazardous Materials**