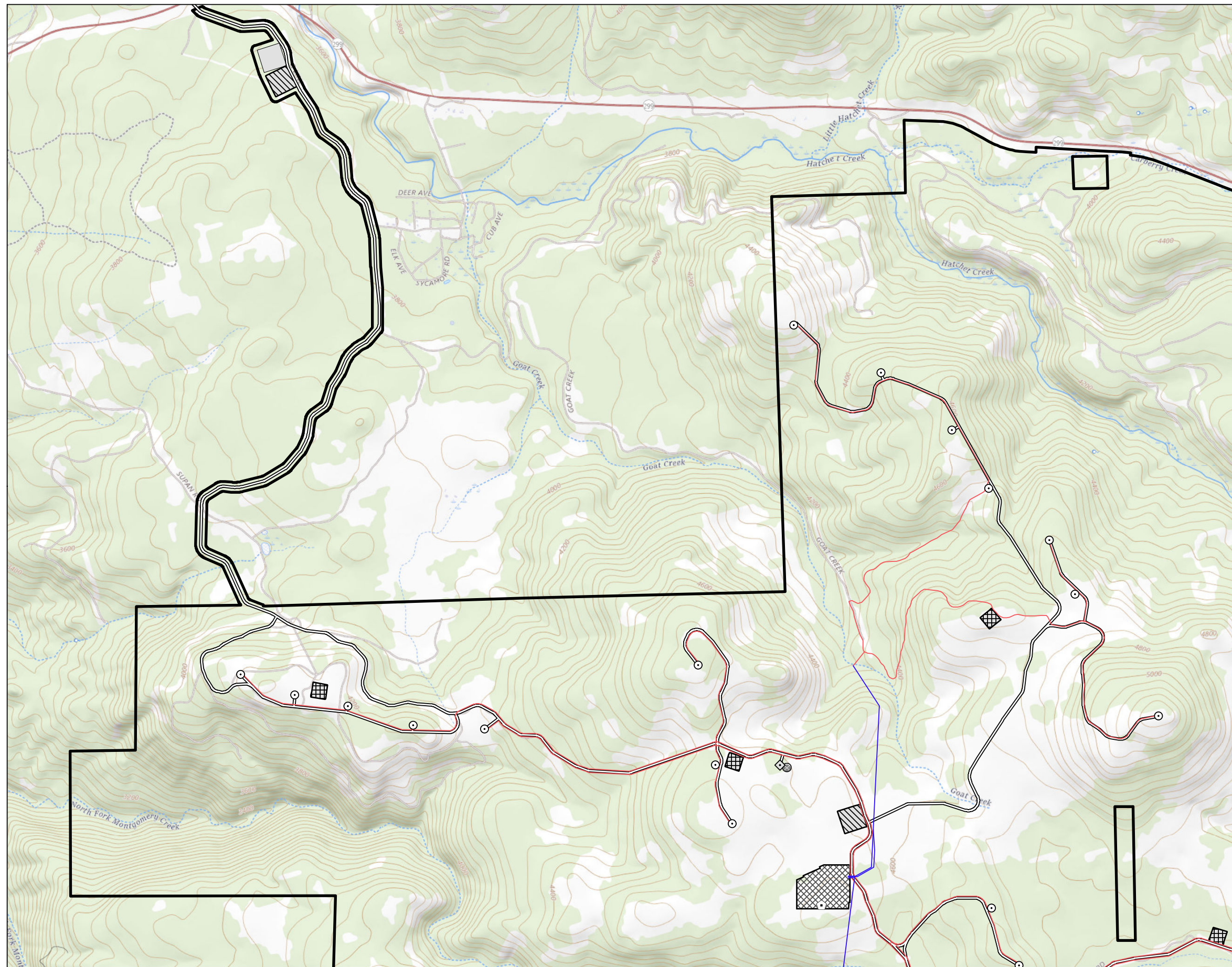


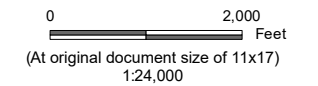
DOCKETED	
Docket Number:	23-OPT-01
Project Title:	Fountain Wind Project
TN #:	250100
Document Title:	GEO-04_Geologic_RecResources
Description:	N/A
Filer:	Caitlin Barns
Organization:	Stantec Consulting Services, Inc.
Submitter Role:	Applicant Consultant
Submission Date:	5/11/2023 11:13:40 AM
Docketed Date:	5/11/2023

V:\11950\active\Task_Owner and other Non-BC1956_Joist\11957\03743\03_data\gis\cad\gis\mxd\2023\GEO-04_GeologicResources.mxd Revised: 2023-05-10 By: garpenter



Legend

- Turbine Location
- ◇ Met Tower Location
- ⬠ Microwave Tower Location
- ⊙ Storage Shed Location
- Overhead Collection
- Underground Collection
- Access Road
- ▨ Batch Plant
- ▭ O&M Facility
- ▧ Staging Area
- ▩ Substation/Switchyard Site
- ▭ Project Area
- California Protected Lands Database
- ▭ Lassen National Forest



- Notes**
1. Coordinate System: NAD 1983 UTM Zone 10N
 2. Data Sources: Shasta County GIS Division
 3. Background: The USGS National Map



Project Location
Shasta County
California

Prepared by GC on 2023-05-09
TR Review by BB on 2023-05-09
IR Review by CB on 2023-05-09

Client/Project
Fountain Wind LLC
Fountain Wind Project

203723159

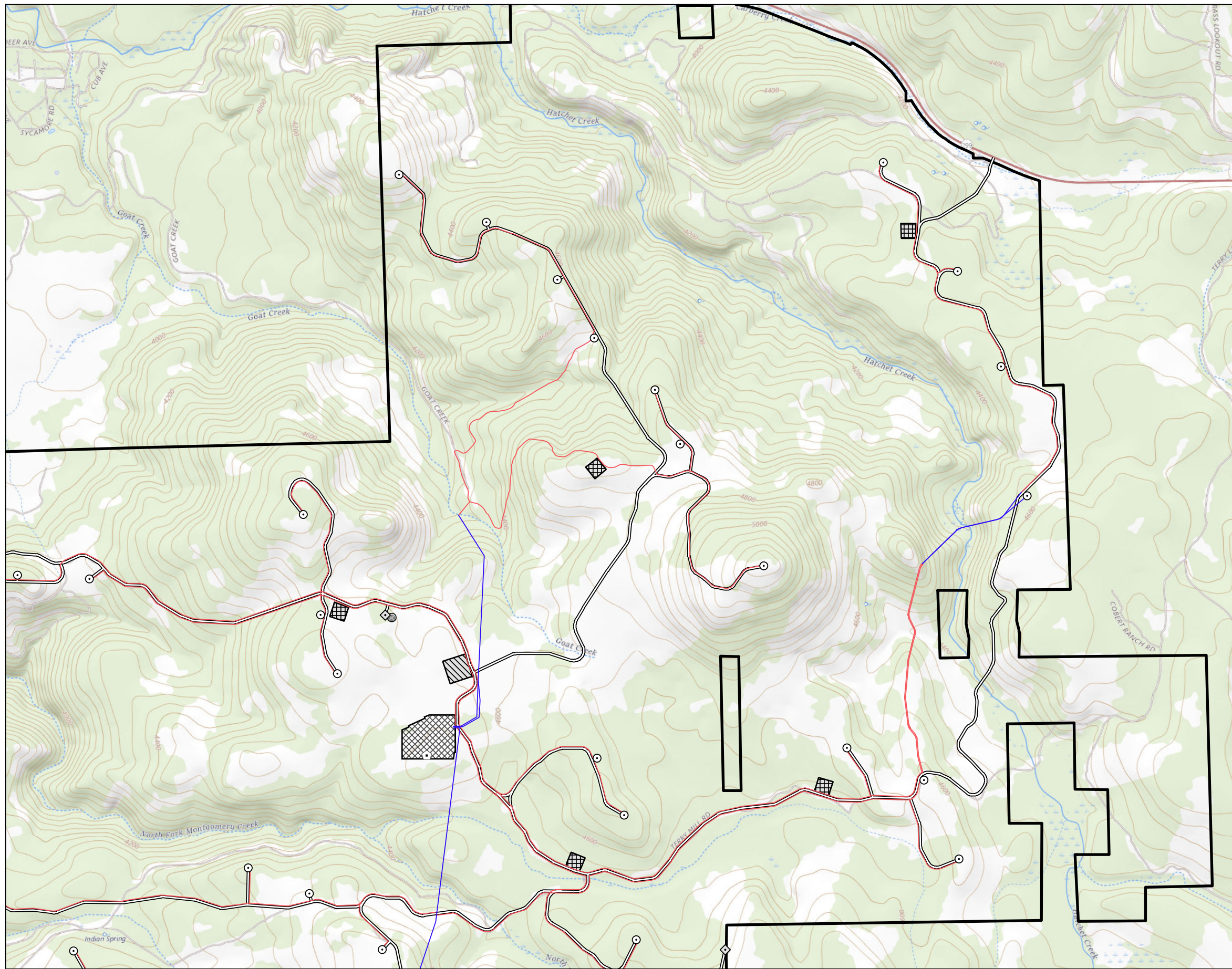
Figure No.

GEO-04

Title

**Geologic Resources of Recreational,
Commercial, or Scientific Value
Sheet 1 of 3**

V:\11950\active\Task_Owner and other Non-BCI\956_Joia\11857\03\43\03_data\gis_cad\gis\mxd\2023\GEO-04_GeologicResources.mxd Revised: 2023-05-10 By: garpentier



Legend

- Turbine Location
- ◇ Met Tower Location
- △ Microwave Tower Location
- Storage Shed Location
- Overhead Collection
- Underground Collection
- Access Road
- ▨ Batch Plant
- ▩ O&M Facility
- ▧ Staging Area
- ▦ Substation/Switchyard Site
- ▭ Project Area
- California Protected Lands Database
- ▭ Lassen National Forest



0 2,000 Feet
 (At original document size of 11x17)
 1:24,000

Notes

1. Coordinate System: NAD 1983 UTM Zone 10N
2. Data Sources: Shasta County GIS Division
3. Background: The USGS National Map



Project Location
 Shasta County
 California

Prepared by GC on 2023-05-09
 TR Review by BB on 2023-05-09
 IR Review by CB on 2023-05-09

Client/Project
 Fountain Wind LLC
 Fountain Wind Project

203723159

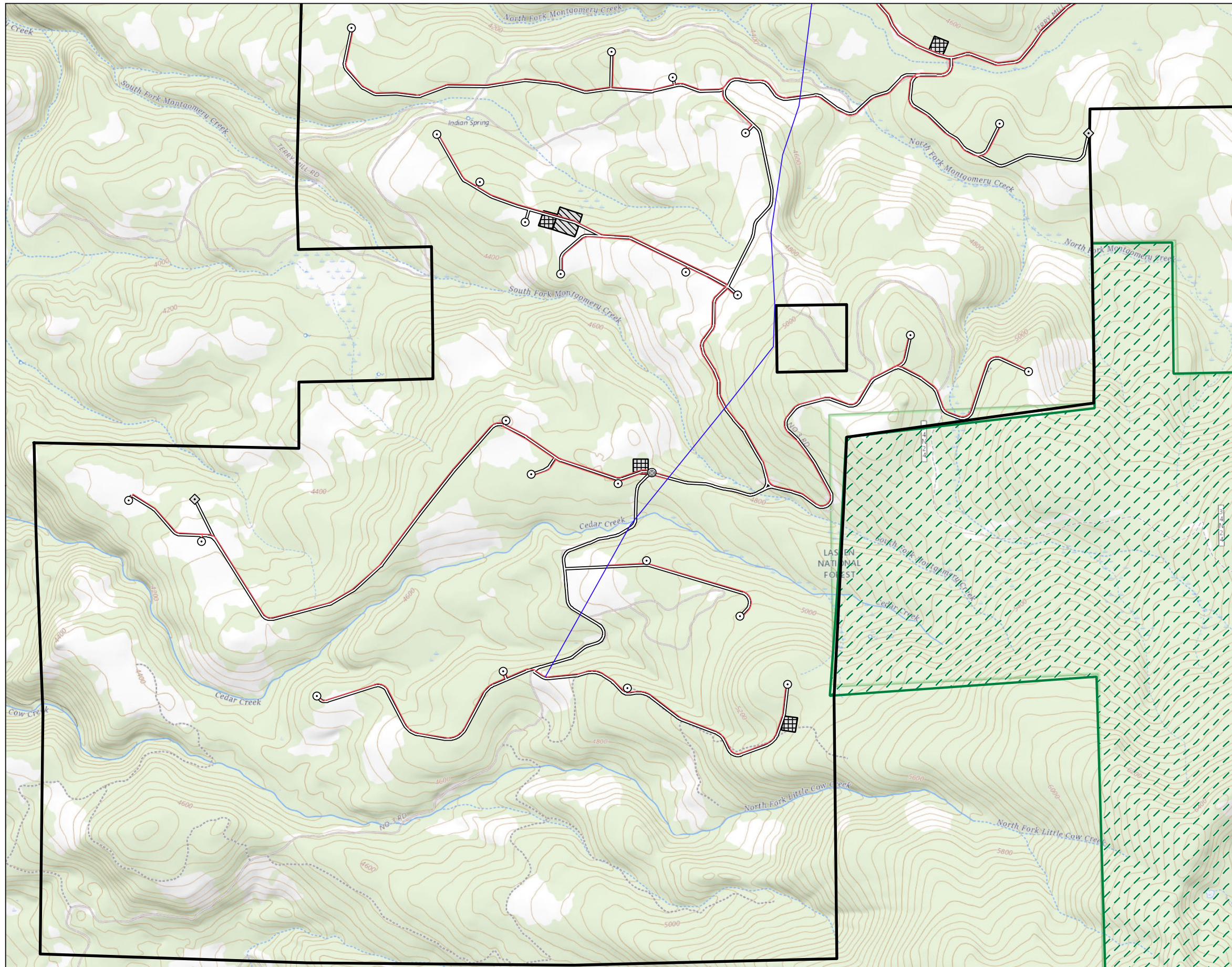
Figure No.

GEO-04

Title

**Geologic Resources of Recreational,
 Commercial, or Scientific Value
 Sheet 2 of 3**

V:\11950\active\Task_Owner and other Non-BC1956_Joist\11957\03743\03_data\tagis_cad\tagis\mxd\2023\GEO-04_GeologicResources.mxd Revised: 2023-05-10 By: garpenter



Legend

- Turbine Location
- ◇ Met Tower Location
- ⬠ Microwave Tower Location
- Storage Shed Location
- Overhead Collection
- Underground Collection
- Access Road
- ▨ Batch Plant
- ▩ O&M Facility
- ▤ Staging Area
- ▧ Substation/Switchyard Site
- ▭ Project Area
- California Protected Lands Database
- ▨ Lassen National Forest



0 2,000 Feet
 (At original document size of 11x17)
 1:24,000

Notes

1. Coordinate System: NAD 1983 UTM Zone 10N
2. Data Sources: Shasta County GIS Division
3. Background: The USGS National Map



Project Location

Shasta County
 California
 Client/Project
 Fountain Wind LLC
 Fountain Wind Project

Prepared by GC on 2023-05-09
 TR Review by BB on 2023-05-09
 IR Review by CB on 2023-05-09

203723159

Figure No.

GEO-04

Title

**Geologic Resources of Recreational,
 Commercial, or Scientific Value
 Sheet 3 of 3**