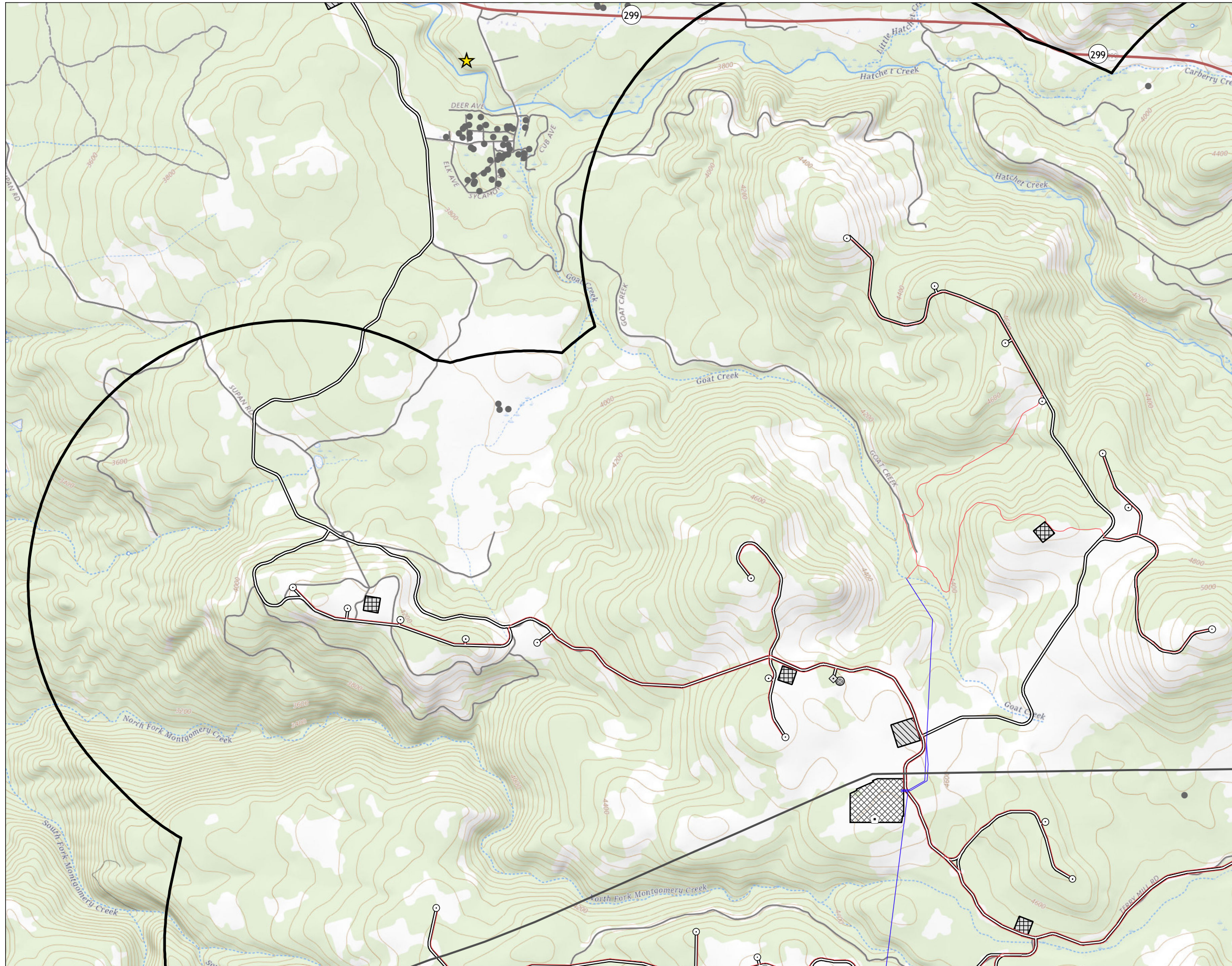


**DOCKETED**

<b>Docket Number:</b>	23-OPT-01
<b>Project Title:</b>	Fountain Wind Project
<b>TN #:</b>	250101
<b>Document Title:</b>	PO-018_Collector_line_RouteResources
<b>Description:</b>	N/A
<b>Filer:</b>	Caitlin Barns
<b>Organization:</b>	Stantec Consulting Services, Inc.
<b>Submitter Role:</b>	Applicant Consultant
<b>Submission Date:</b>	5/11/2023 11:13:40 AM
<b>Docketed Date:</b>	5/11/2023



V:\1950\active\_Tasks\Owner and other Non-BC1956\_Jobs\185703743003\_data\gis\_data\gis\_md\2023\PO-018\_T1\LineRouteResources\_pwb.mxd Revised: 2023-05-09 By: pbantera



Legend

- ★ Fountain Fire Overlook
- Settled Areas
- Turbine Location
- ◇ Met Tower Location
- ⬠ Microwave Tower Location
- ⊙ Storage Shed Location
- Collector Line
- Overhead Collection
- Underground Collection
- ≡ Access Road
- ⬢ Collector Line 1 Mile Buffer
- 🌲 National Forest
- ▨ Batch Plant
- O&M Facility
- ▧ Staging Area
- ⊞ Substation/Switchyard Site



0 3,000 Feet  
 (At original document size of 11x17)  
 1:24,000

- Notes**
1. Coordinate System: NAD 1983 UTM Zone 10N
  2. Data Sources: Shasta County GIS Division
  3. Background: The USGS Topo Map Vector Data



**Project Location**  
 Shasta County  
 California

Prepared by GC on 2023-05-09  
 TR Review by DA on 2023-05-09  
 IR Review by CB on 2023-05-09

**Client/Project**  
 Fountain Wind LLC  
 Fountain Wind Project

203723159

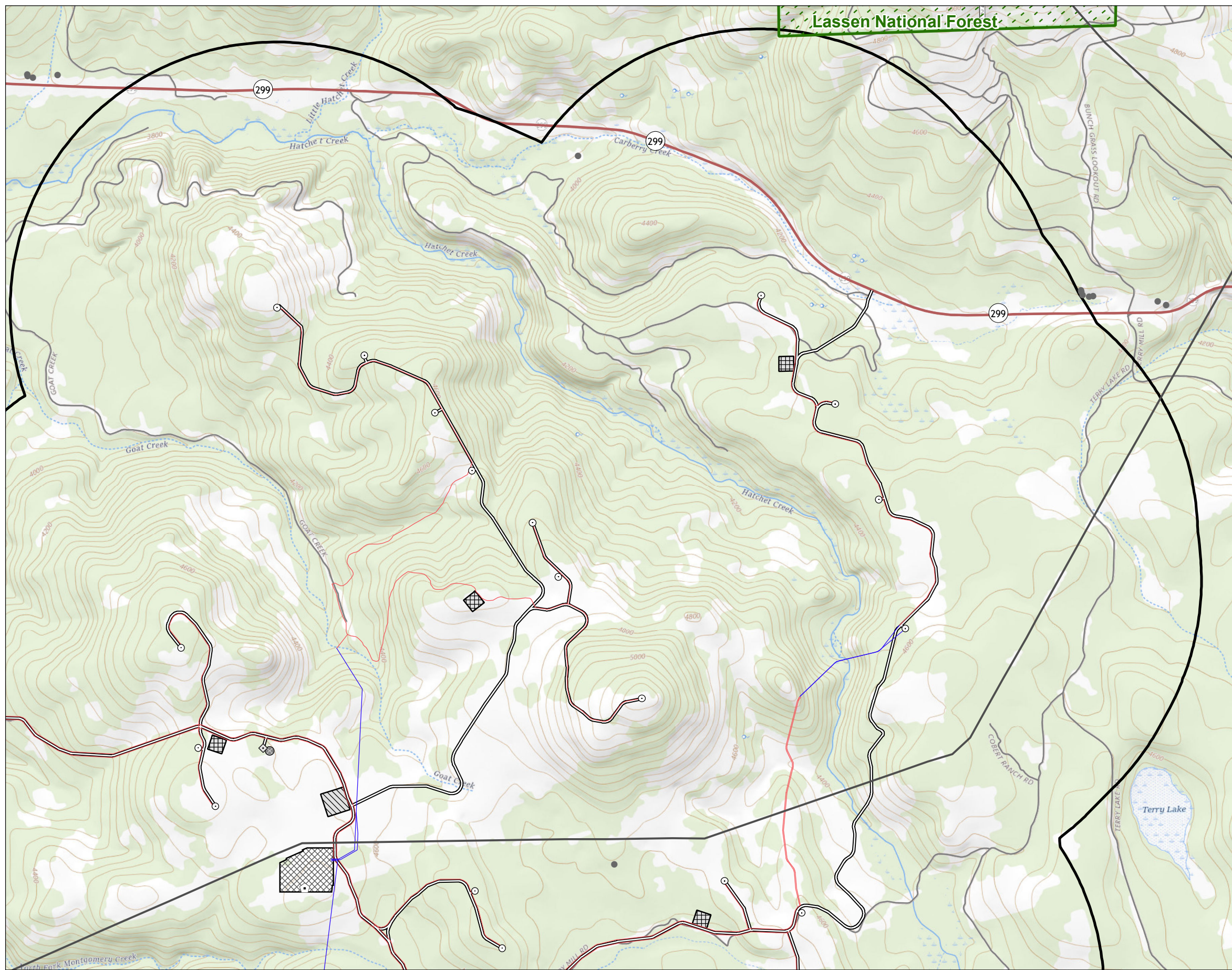
**Figure No.**

**PO-018**

**Title**  
**Collector Line Settled Areas, Scenic and  
 Recreational Resources**



V:\1956\active\_Task Owner and other Non-BC\1956\_Jobs\185703743003\_data\gis\_md\2023\PO-018\_T1\ThreeRouteResources\_pwb.mxd Revised: 2023-05-09 By: pbantera

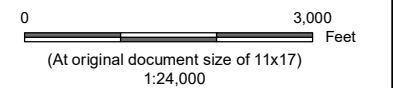


Lassen National Forest



Legend

- ★ Fountain Fire Overlook
- Settled Areas
- Turbine Location
- ◇ Met Tower Location
- ⬠ Microwave Tower Location
- ⊙ Storage Shed Location
- Collector Line
- Overhead Collection
- Underground Collection
- ≡ Access Road
- ▭ Collector Line 1 Mile Buffer
- ▨ National Forest
- ▨ Batch Plant
- ▨ O&M Facility
- ▨ Staging Area
- ▨ Substation/Switchyard Site



Notes

1. Coordinate System: NAD 1983 UTM Zone 10N
2. Data Sources: Shasta County GIS Division
3. Background: The USGS Topo Map Vector Data



Project Location  
Shasta County  
California

Prepared by GC on 2023-05-09  
TR Review by DA on 2023-05-09  
IR Review by CB on 2023-05-09

Client/Project  
Fountain Wind LLC  
Fountain Wind Project

203723159

Figure No.

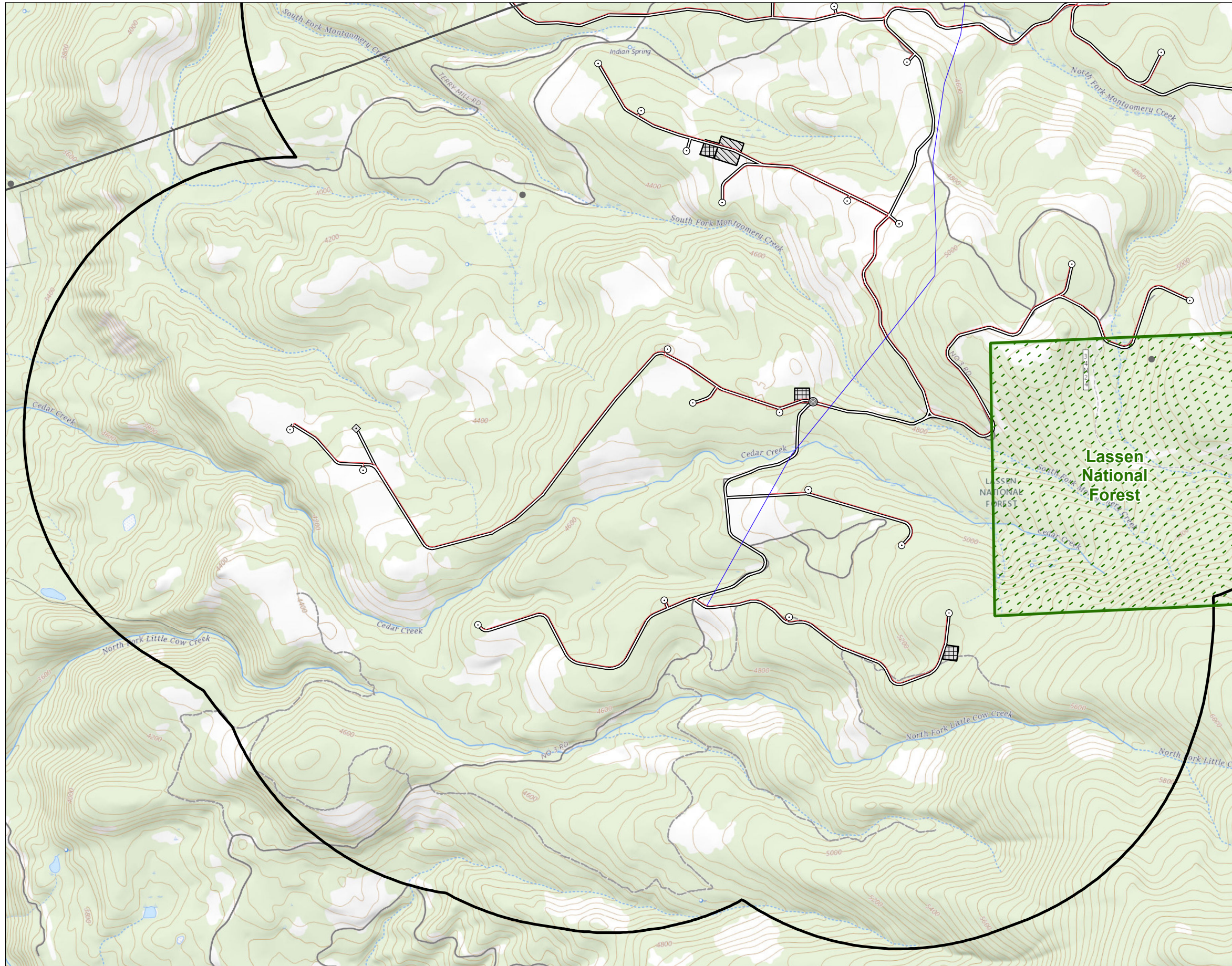
**PO-018**

Title

**Collector Line Settled Areas, Scenic and Recreational Resources**

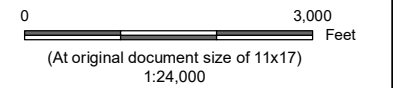


V:\1956\active\_Task Owner and other Non-BC\1956\_Jobs\185703743003\_data\gls\mxd\2023\PO-018\_TheRouteResources\_pwb.mxd Revised: 2023-05-09 By: pbantera



Legend

- ★ Fountain Fire Overlook
- Settled Areas
- Turbine Location
- ◇ Met Tower Location
- ⬠ Microwave Tower Location
- ⊙ Storage Shed Location
- Collector Line
- Overhead Collection
- Underground Collection
- ≡ Access Road
- ▭ Collector Line 1 Mile Buffer
- ▨ National Forest
- ▨ Batch Plant
- ▨ O&M Facility
- ▨ Staging Area
- ▨ Substation/Switchyard Site



Notes

1. Coordinate System: NAD 1983 UTM Zone 10N
2. Data Sources: Shasta County GIS Division
3. Background: The USGS Topo Map Vector Data



Project Location  
Shasta County  
California

Prepared by GC on 2023-05-09  
TR Review by DA on 2023-05-09  
IR Review by CB on 2023-05-09

Client/Project  
Fountain Wind LLC  
Fountain Wind Project

203723159

Figure No.

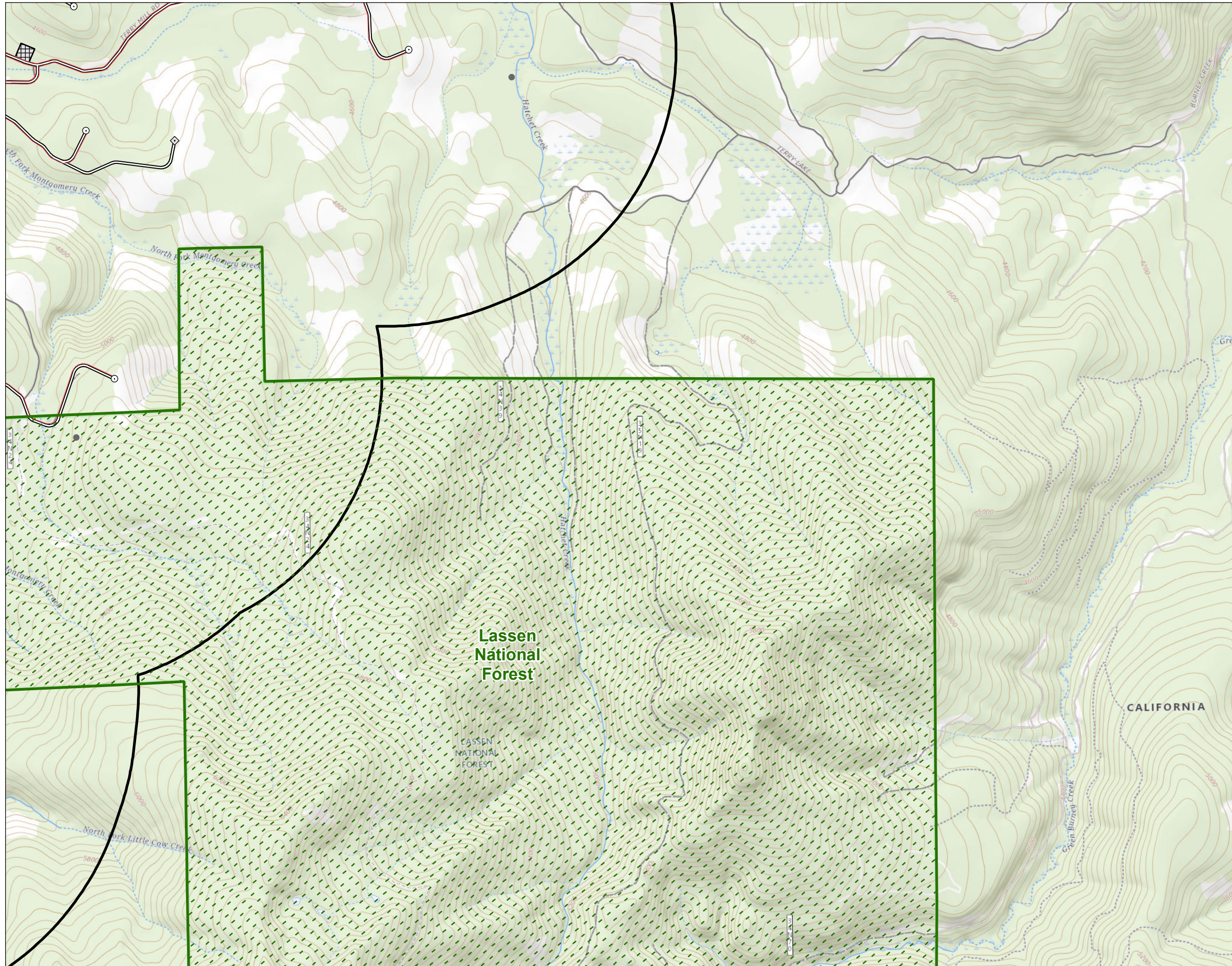
**PO-018**

Title

**Collector Line Settled Areas, Scenic and Recreational Resources**

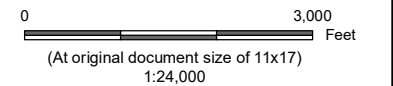


V:\1950\active\_Task Owner and other Non-BC1956\_Jobs\185703743003\_data\gls\_card\gls\_mxd\2023\PO-018\_ThinRouteResources\_pwb.mxd Revised: 2023-05-09 By: pbanbera



Legend

- ★ Fountain Fire Overlook
- Settled Areas
- Turbine Location
- ◇ Met Tower Location
- ⬠ Microwave Tower Location
- ⊙ Storage Shed Location
- Collector Line
- Overhead Collection
- Underground Collection
- ≡ Access Road
- ▭ Collector Line 1 Mile Buffer
- ▨ National Forest
- ▨ Batch Plant
- ▭ O&M Facility
- ▨ Staging Area
- ▨ Substation/Switchyard Site



Notes

1. Coordinate System: NAD 1983 UTM Zone 10N
2. Data Sources: Shasta County GIS Division
3. Background: The USGS Topo Map Vector Data



Project Location  
Shasta County  
California

Prepared by GC on 2023-05-09  
TR Review by DA on 2023-05-09  
IR Review by CB on 2023-05-09

Client/Project  
Fountain Wind LLC  
Fountain Wind Project

203723159

Figure No.

**PO-018**

Title

**Collector Line Settled Areas, Scenic and Recreational Resources**