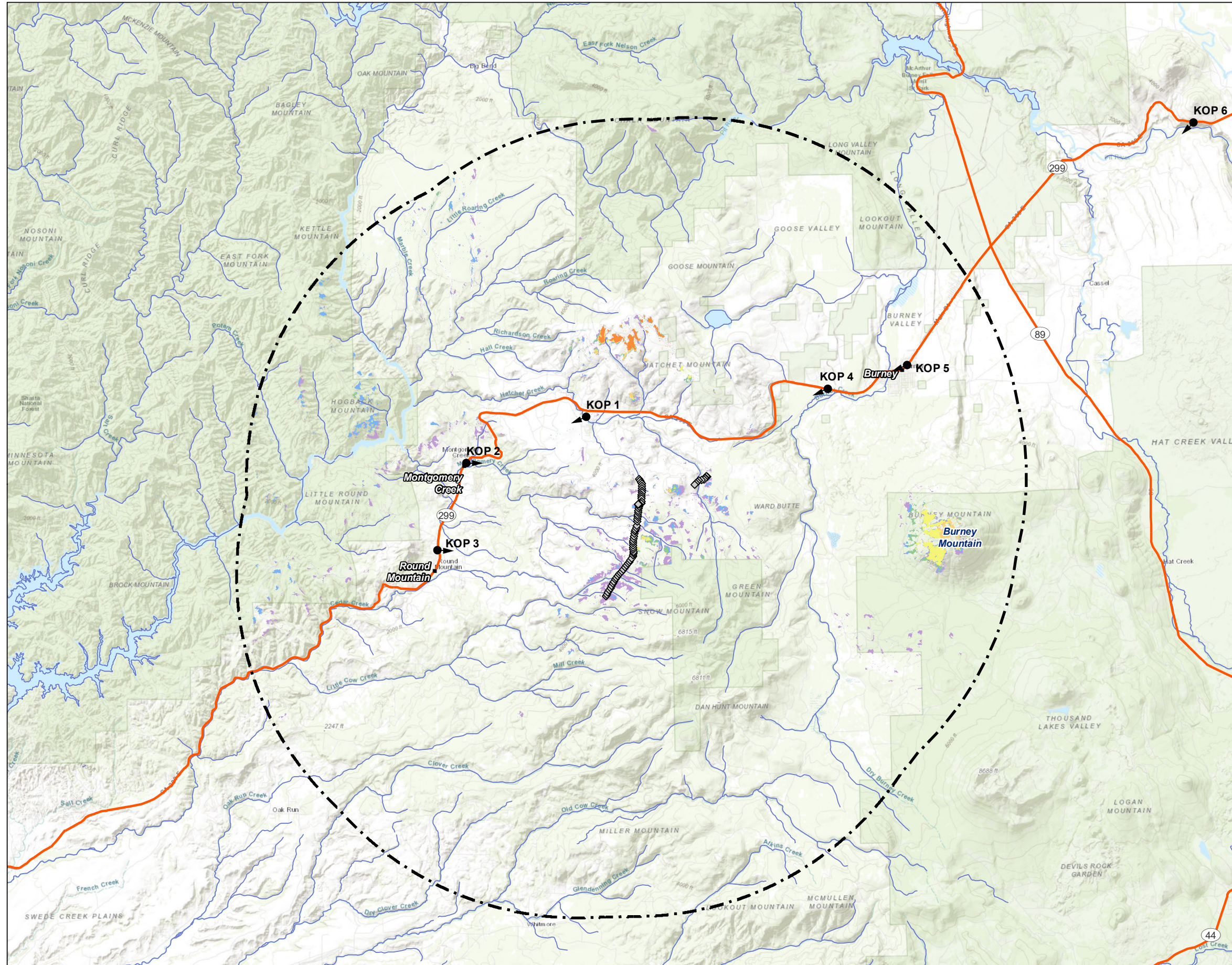


DOCKETED	
Docket Number:	23-OPT-01
Project Title:	Fountain Wind Project
TN #:	249950-6
Document Title:	FtnWind_RevViewshed-01_10milePoleVS
Description:	N/A
Filer:	Caitlin Barns
Organization:	Stantec Consulting Services, Inc.
Submitter Role:	Applicant Consultant
Submission Date:	5/2/2023 3:30:57 PM
Docketed Date:	5/2/2023

V:\11950\active\Task_Owner and other Non-BCI\956_Joist\185703743\03_data\tagline_cad\glis\mxd\Views\10-Mile Radius Viewshed\2023\20230723159_03_10-Mile Pole VS.mxd Revised: 2023-04-18



Legend

- ◆ Collector Pole
- Key Observation Point (KOP)
- ⊞ 10-Mile Radius from Project Footprint
- 10-Mile Radius Viewshed – Overhead Collector Pole
- Number of Potential Poles Visible
- 1 - 10
- 11 - 20
- 21 - 30
- 31 - 40
- 41 - 50
- 51 - 68



0 3 Miles
 (At original document size of 11x17)
 1:200,000

- Notes
1. Coordinate System: NAD 1983 UTM Zone 10N
 2. Data Sources: USGS
 3. Background: ESRI World Topographic Map



Project Location
 Shasta County
 California

Client/Project
 Fountain Wind LLC
 Fountain Wind Project

Prepared by GC on 2023-04-18
 Reviewed by JH on 2023-04-19

203723159

Figure No.
3

Title
**10-Mile Radius Viewshed
 Overhead Collector Poles**