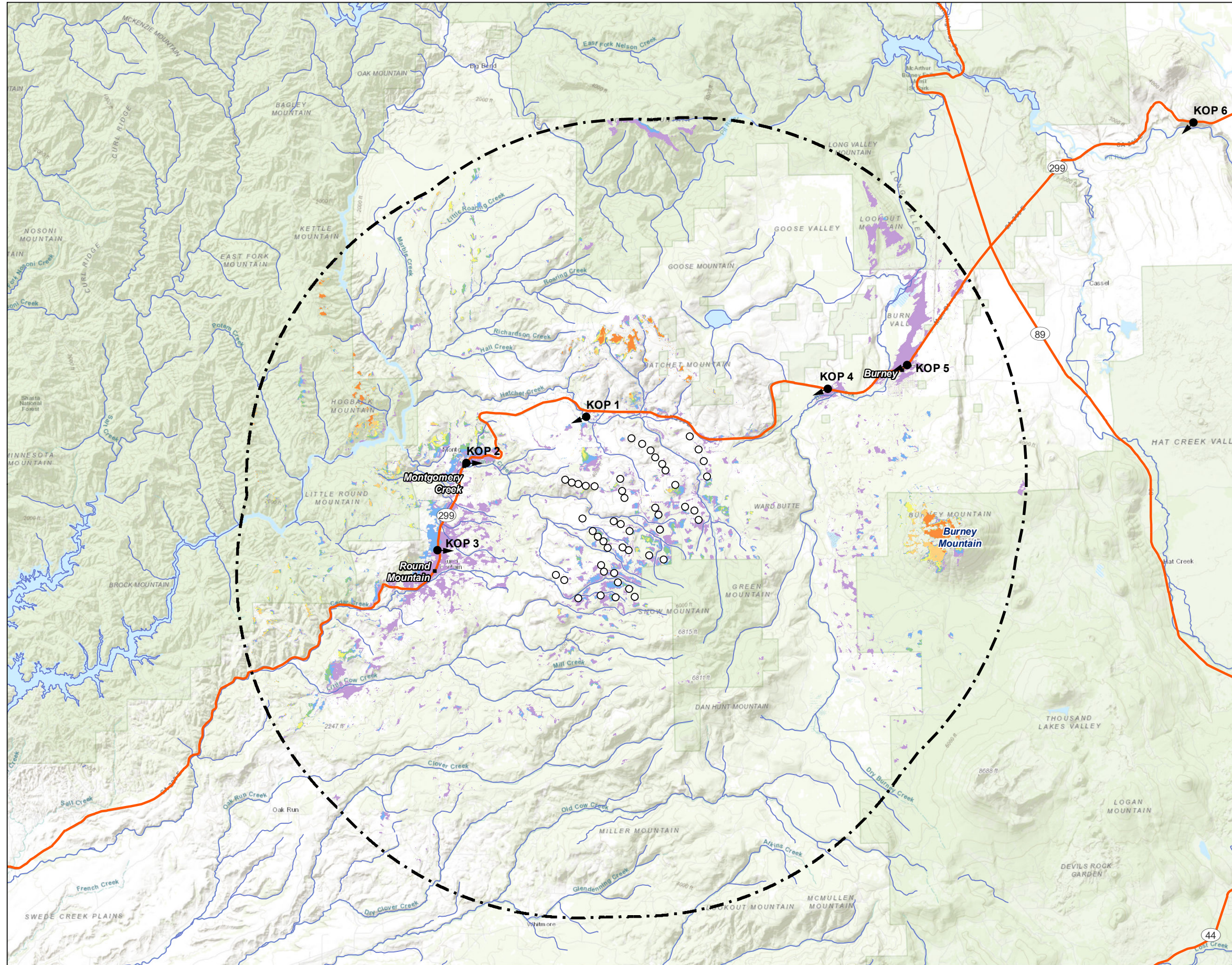


DOCKETED

Docket Number:	23-OPT-01
Project Title:	Fountain Wind Project
TN #:	249950-5
Document Title:	FtnWind_RevViewshed-02_10mileHubVS
Description:	N/A
Filer:	Caitlin Barns
Organization:	Stantec Consulting Services, Inc.
Submitter Role:	Applicant Consultant
Submission Date:	5/2/2023 3:30:57 PM
Docketed Date:	5/2/2023

V:\11950\active\Task_Owner and other Non-BC1956_Joist\1195703743\03_data\tagline_cad\tagline\Views\10-MileHubV5.mxd Revised: 2023-04-18



Legend

- Turbine
- Key Observation Point (KOP)
- ⌈ ⌋ 10-Mile Radius from Project Footprint
- 10-Mile Radius Viewshed – Hub Height
- Number of Potential Turbines Visible
- 1 - 8
- 9 - 16
- 17 - 24
- 25 - 32
- 33 - 40
- 41 - 48



0 3 Miles
 (At original document size of 11x17)
 1:200,000

- Notes**
1. Coordinate System: NAD 1983 UTM Zone 10N
 2. Data Sources: USGS
 3. Background: ESRI World Topographic Map



Project Location
 Shasta County
 California

Client/Project
 Fountain Wind LLC
 Fountain Wind Project

Prepared by GC on 2023-04-18
 Reviewed by JH on 2023-04-19

203723159

Figure No.

2

Title

**10-Mile Radius Viewshed
 Hub Height**