

DOCKETED

Docket Number:	23-ERDD-06
Project Title:	California Tribal Energy Resiliency Alliance (C-TERA)
TN #:	249814
Document Title:	Presentation - Energy Technical Assistance Hubs Staff Draft Proposal for California Tribal Energy Resiliency Alliance (C-TERA)
Description:	Presented at the 4/17/23 Tribal Listening Session and 4/18/23 Public Workshop
Filer:	Rachel Salazar
Organization:	California Energy Commission
Submitter Role:	Commission Staff
Submission Date:	4/19/2023 12:37:50 PM
Docketed Date:	4/19/2023



Energy Technical Assistance Hubs Staff Draft Proposal for California Tribal Energy Resiliency Alliance (C-TERA)



Housekeeping

- This **Scoping Workshop on Technical Assistance Hubs** under the Proposed C-TERA is being held remotely.
- Input provided via oral or written comments will help inform development of the planned Technical Assistance Hubs.
- Information and documentation for this listening session will be provided on the event webpage: <https://www.energy.ca.gov/event/workshop/2023-04/scoping-workshop-technical-assistance-hubs-under-proposed-california-tribal>
- **Discussion** will take place at the end of the presentation. **Written comments** requested by **April 28, 2023**.
- **Zoom:** Technical support is available at <https://support.zoom.us/> Or call (888) 799-9666, ext. 2
- You may also contact the Public Advisor's Office via email publicadvisor@energy.ca.gov, or by phone at (916) 957-7910.



Agenda

Time	Topic	Presenter
1:00 PM	Welcome and Introduction	Alex Horangic
1:10 PM	Overview of the DOE Grid Resilience and Innovation Partnerships (GRIP) Funding Opportunity and Application Focus	Alex Horangic
1:15 PM	CEC GRIP Application — Technical Assistance Hubs	Fritz Foo
1:35 PM	Discussion Period	All
2:50 PM*	Close of Workshop	Alex Horangic

*Pending discussion, the session may conclude earlier.



U.S. DOE Grid Resilience and Innovation Partnerships Program (GRIP)

GRIP Grid Innovation Program

\$5 billion for innovative approaches to transmission, storage, and distribution infrastructure to enhance grid resilience and reliability.

- Enhance grid flexibility and improve resilience of nation's power grid against extreme weather and climate change.
- Accelerate deployment of transformative projects to help ensure reliability of power infrastructure, ensuring all American communities have access to affordable, reliable, clean electricity anytime, anywhere.
- Innovative approaches (e.g., advanced technologies, innovative partnerships, deployment of projects planned through innovative processes, etc.)



<https://www.energy.gov/gdo/grid-resilience-and-innovation-partnerships-grip-program>



CEC GRIP Application Focus

California Tribal Energy Resiliency Alliance (C-TERA):

Develop and deploy a proposed portfolio of grid-serving clean energy projects:

- Serve the specific needs of Tribal communities and their critical facilities and provide resilience for the Tribes and adjacent communities.
- 16 proposed projects totaling approx. \$500M (\$250M federal funds/\$250M non-federal funds).





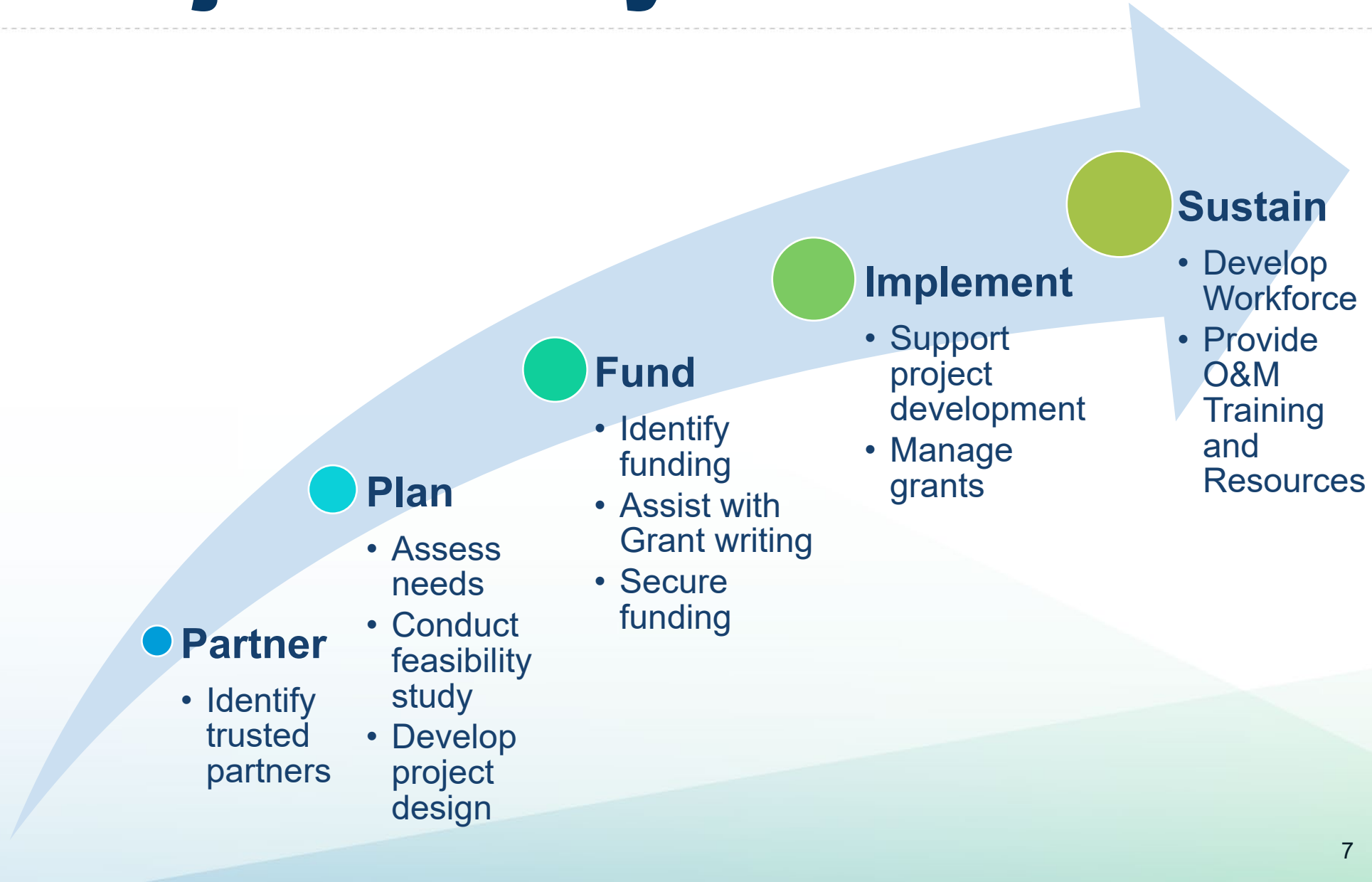
Technical Assistance Hubs

C-TERA Technical Assistance (TA) hubs will deliver holistic support for Tribal Energy Sovereignty by offering:

- Services to support clean energy projects through the project **life cycle**, including needs assessment, financial planning, project planning, construction, operations, and maintenance.
- Services to support **community engagement**.
- Services to support **economic and workforce development**.
- Services to ensure Tribes are positioned to access **future funding opportunities**, such as grant writing support.



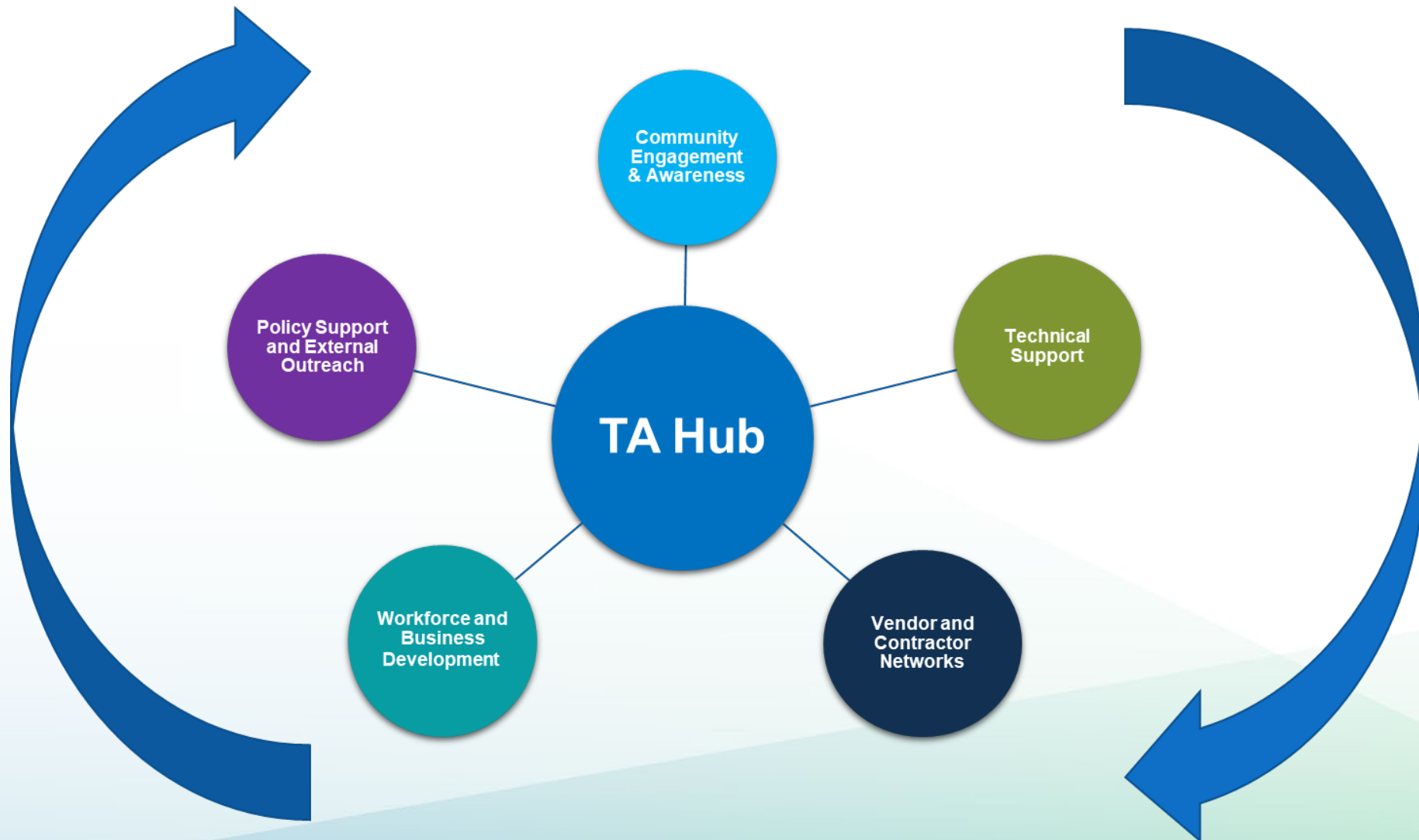
Project Lifecycle





Proposed Support Services

Holistic support throughout life cycle of project and beyond





Proposed Support Services (1)

TA hubs will provide a variety of services depending on the specific Tribal community's needs, centered around 5 core areas:

1. Technical Support

- a. Support for clean energy project design, development, and management.
- b. Support for climate adaptation planning, financial planning, and other planning needs.
- c. Assistance engaging with relevant government agencies and utilities to help ensure project success.
- d. Legal and grant writing services.
- e. Support for project benefits tracking.



Proposed Support Services (2)

2. Community Support and Awareness

- a. Help convene community members to identify priority concerns, conduct **needs assessments**, and raise awareness of energy needs and goals.
- b. Share information and **actively recruit participation** for clean energy projects, jobs, programs, trainings, incentives, and funding opportunities.
- c. Develop expertise within communities through mentorship/coaching.



Proposed Support Services (3)

3. Vendor and Contractor Networks

- a. Build out and ensure access to quality clean energy/clean transportation service providers such as project developers, contractors, and manufacturers.
- b. Support development of clean energy Tribal-owned enterprises.
- c. Enhance service providers expertise in working with Tribal and under-resourced communities.



Proposed Support Services (4)

4. Workforce and Business Development

- a. Cultivate partnerships with industry, academia, labor, and training providers to access training and jobs.
- b. Develop career/job pathways across the full spectrum of project occupations from on-the-job training, pre-apprenticeship training, apprenticeship enrollment, and access to product OEM training.
- c. Support development and growth of small, certified businesses and entrepreneurship, particularly tribal-owned.



Proposed Support Services (5)

5. Policy Support and External Outreach

- a. Conduct targeted stakeholder engagement to inform public policy development and investments.
- b. Facilitate strategic connections between communities and policymakers.
- c. Communicate project outcomes and learnings with other communities and policymakers to inform future efforts (e.g. case studies and outreach).



Network Partners

TA hubs will form regional networks to provide support services. Networks will include:

- Tribes
- Tribal-serving organizations
- Federal, state, and local government entities
- Universities and other academic institutions
- Clean energy technology companies and employers
- Service providers
- Others with dedicated resources



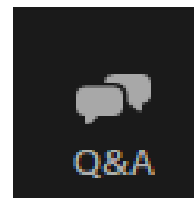
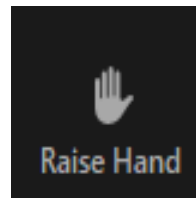
C-TERA Timeline





Discussion Guidelines

- Use the “Raise Hand” feature and you will be called on to unmute yourself or type your feedback in the Q&A window.



- From cell phone: push *9 to “raise your hand”, host will give you the ability to speak, then caller must push *6 to mute and unmute.
- Provide your name and affiliation when speaking.



Discussion Questions – Structure and Services

Initial TA hub Structure

1. How should the TA hubs be **organizationally structured**?
 - a. Should TA hubs be local, regional or statewide?
 - b. Should there be a physical location for a TA hub?
 - c. What key organizations should help lead the TA hubs (state agencies, academic institutions, community or equity advocacy firms)?
2. Are there **areas of expertise or services** that are missing?





Discussion Questions – Structure and Services (cont'd)

Initial TA hub Structure (cont'd)

3. Are there **regional efforts** that could be leveraged?
4. What are some successful **TA hub models** that should be considered?
5. How do we structure TA Hubs to be **sustainable** over time? (i.e. financially, continued services and assistance, etc.)?



Discussion Questions – Goals

Overall Goals of TA Hub

6. Are the goals listed for TA hubs comprehensive?

- Accelerate the adoption of clean energy/transportation solutions
- Enhance community resilience
- Support business, workforce, and jobs
- Build capacity to help enable access and benefits from future clean energy/transportation funding opportunities
- Support energy sovereignty



Discussion Questions – Workforce and Enterprise

Workforce and Enterprise

7. What **workforce training and development models and partners** should be considered and/or leveraged?
8. How can TA Hubs support **enterprises and businesses**?





Provide Comments

Written comments requested by 5:00 PM on April 28, 2023

Options to submit comments include:

- Submit online through the CEC's e-commenting page at <https://efiling.energy.ca.gov/EComment/EComment.aspx?docketnumber=23-ERDD06>.
- Send email to docket@energy.ca.gov. Include **docket number 23-ERDD-06** and **"California Tribal Energy Resiliency Alliance (C-TERA)"** in the subject line.



Thank you!