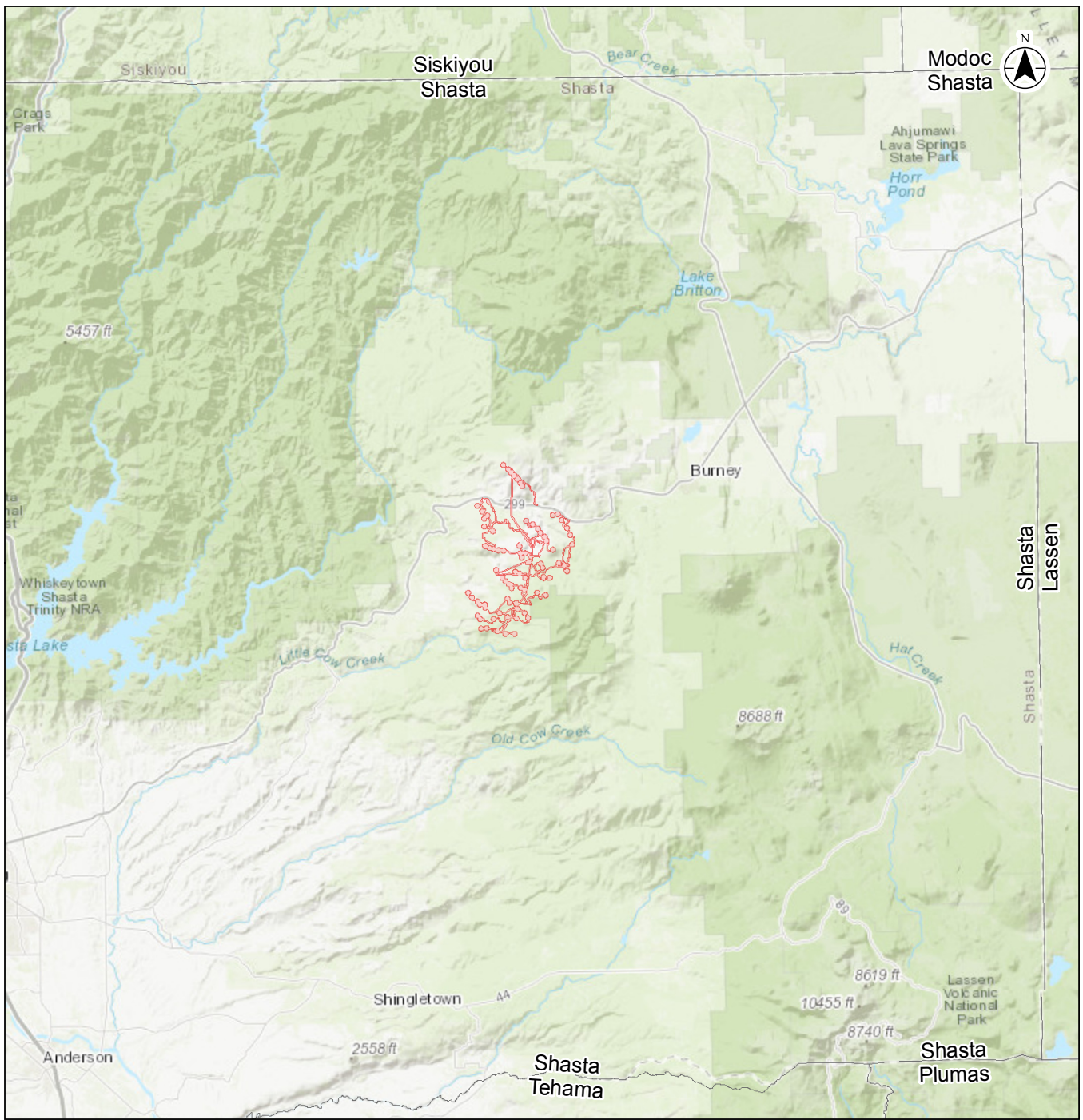
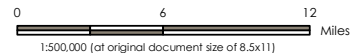


DOCKETED	
Docket Number:	23-OPT-01
Project Title:	Fountain Wind Project
TN #:	248329-6
Document Title:	LSAA Figure 1 Project Overview
Description:	N/A
Filer:	Caitlin Barns
Organization:	Stantec Consulting Services, Inc.
Submitter Role:	Applicant Consultant
Submission Date:	1/5/2023 9:49:25 AM
Docketed Date:	1/5/2023



- Project Study Area
- County Boundary



Project Location: 185703743
 Shasta County, California
 Prepared by WDC on 2018-11-14
 Technical Review by ES on 2018-11-15
 Independent Review by XX on 2018-11-XX
 Client/Project:

Fountain Wind Energy

Figure No. **1**

Title **Project Vicinity Map**

Notes
 1. Coordinate System: NAD 1983 UTM Zone 10N
 2. Service Layer Credits: Sources: Esri, HERE, DeLorme, Intermap, increment P Corp., GEBCO, USGS, FAO, NPS, NRCAN, GeBCO, IGN, Kadaster NL, Ordnance Survey, Esri Japan, METI, Esri China (Hong Kong), swisstopo, MapmyIndia, © OpenStreetMap contributors, and the GIS

Disclaimer: Stantec assumes no responsibility for data supplied in electronic format. The recipient accepts full responsibility for verifying the accuracy and completeness of the data. The recipient releases Stantec, its officers, employees, consultants and agents, from any and all claims arising in any way from the content or provision of the data.