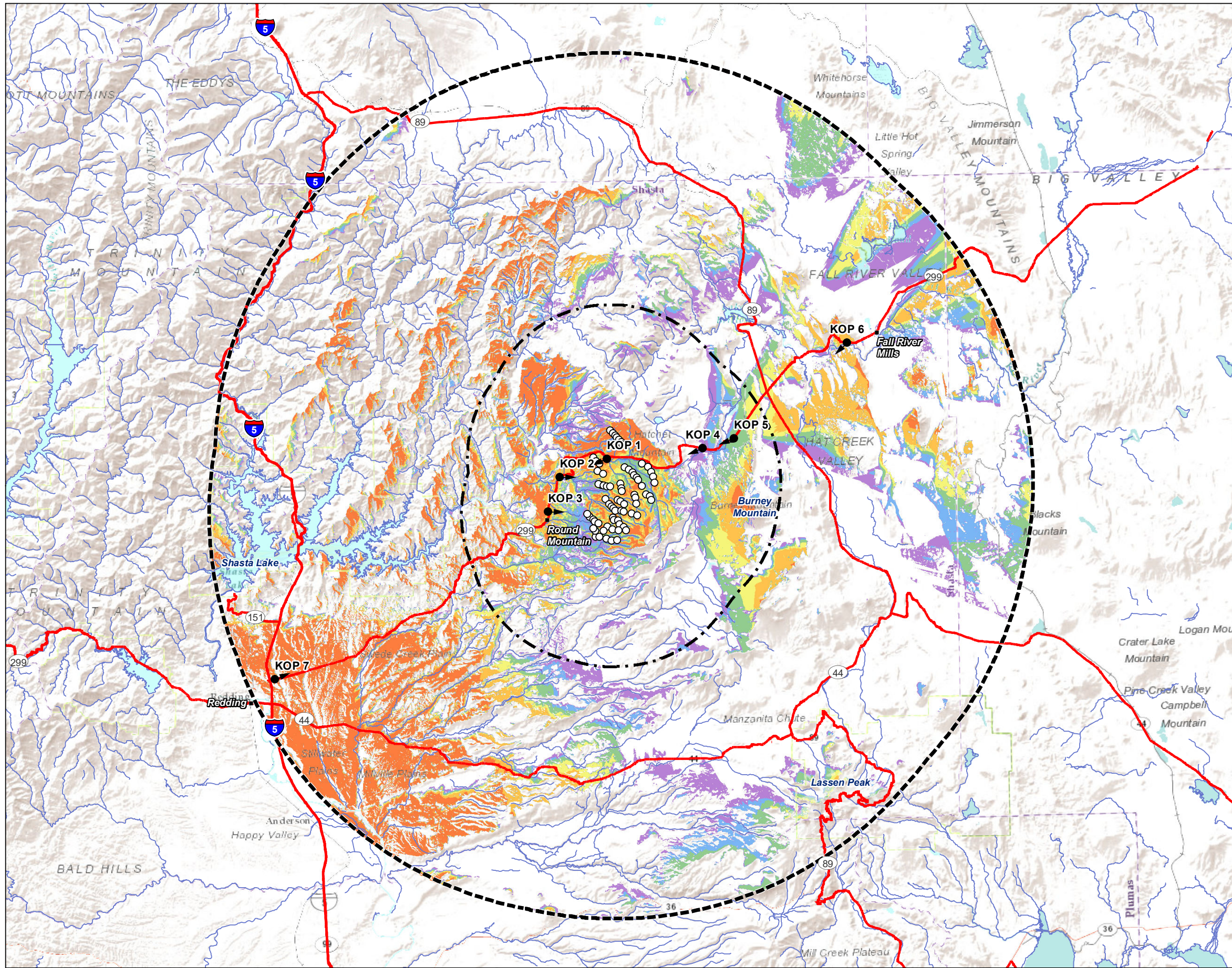


DOCKETED	
Docket Number:	23-OPT-01
Project Title:	Fountain Wind Project
TN #:	248320-11
Document Title:	Visual resources report Fig2a rev2
Description:	N/A
Filer:	Caitlin Barns
Organization:	Stantec Consulting Services, Inc.
Submitter Role:	Applicant Consultant
Submission Date:	1/4/2023 1:58:57 PM
Docketed Date:	1/4/2023

V:\1950\active\Task Owner and other Non-BC1956_Jobs\185703743003_data\gis_cad\gis\mxd\viewshed\185804576_02A_30mileBladeTip\VS.mxd Revised: 2020-06-22 By: gcarpentier



Legend

- Turbine
- Key Observation Point (KOP)
- ⊞ 10 Mile Radius from Project Footprint
- ⊞ 30 Mile Radius from Project Footprint
- 30-Mile Radius Viewshed – Turbine Blade Tip
- Number of Potential Turbines Visible
- 1 - 5
- 6 - 10
- 11 - 20
- 21 - 30
- 31 - 50
- 51 - 72



0 4 8 Miles
(At original document size of 11x17)
1:506,880

- Notes
1. Coordinate System: NAD 1983 UTM Zone 10N
 2. Data Sources: USGS
 3. Background: ESRI Terrain Base Map



Project Location
Shasta County
California

Client/Project
Fountain Wind Project
ConnectGen Operating LLC

Prepared by GC on 2019-10-23
Reviewed by JH on 2019-10-24

185804576

Figure No.
2a

Title
**30-Mile Radius Viewshed
Turbine Blade Tip**