

DOCKETED	
Docket Number:	23-OPT-01
Project Title:	Fountain Wind Project
TN #:	248320-8
Document Title:	Figure - 6-1 Fountain Fire Overlook KOP
Description:	N/A
Filer:	Caitlin Barns
Organization:	Stantec Consulting Services, Inc.
Submitter Role:	Applicant Consultant
Submission Date:	1/4/2023 1:58:57 PM
Docketed Date:	1/4/2023



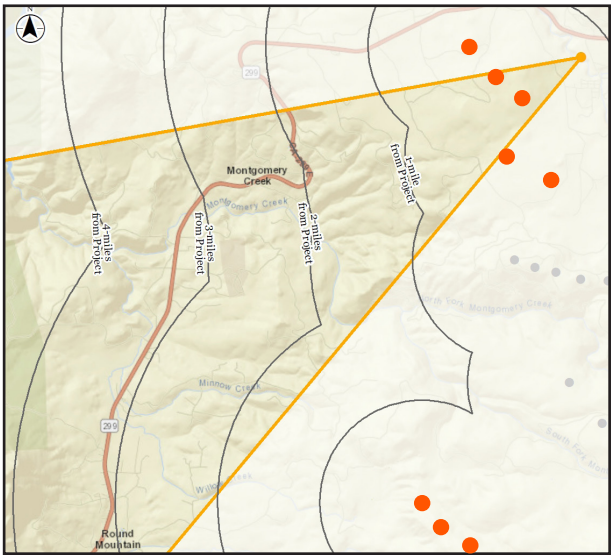
A: View from KOP 1 with 72-turbine layout simulated as evaluated in the FEIR. Proposed turbines would be visible just under one mile away. This view was evaluated as an approximation of Project visibility from nearby Moose Camp.



B: There would be no turbines visible from KOP 1 with the 48-turbine layout.



C: Existing view from KOP 1 (outlined) within broader context.



D: Approximate location of turbines within the 40-degree horizontal field of vision represented in the above view. Orange dots indicate turbines removed in refined project layout.

Specifications
Location: 40°51'47.50"N, 121°51'1.23"W
View Direction: West-Southwest
Date & Time: 18 April 2019, 10:38 a.m.
Camera Focal Length: 50 mm
Camera Make / Model: 5DsR
Photo Source: Stantec
Number of Refined Layout Turbines Visible: 0



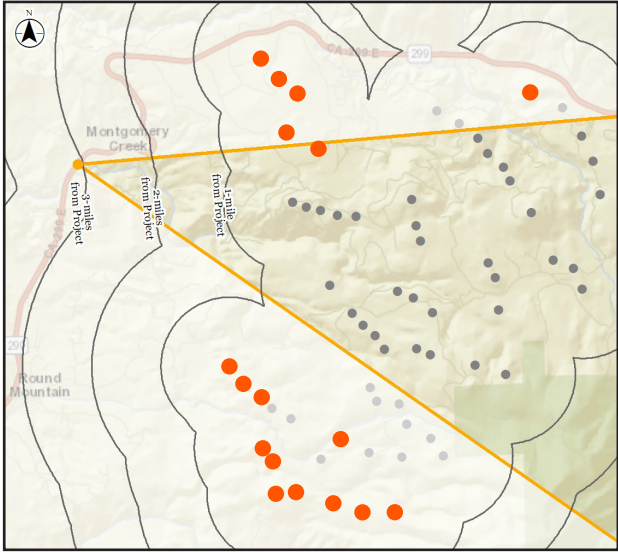
A: View from KOP 2 with 72-turbine layout simulated as evaluated in the FEIR. Proposed turbines would be most visible in the left half of the view, between 3 and 5 miles away.



B: With the 48-turbine layout, one turbine would be removed from the left edge of this view. Other turbines would remain but would appear lower in profile along the ridgeline in the center of the view.



C: Existing view from KOP 2 (outlined) within broader context.



D: Approximate location of turbines within the 40-degree horizontal field of vision represented in the above view. Orange dots indicate turbines removed in refined project layout.

Specifications
Location: 40°50'34.57"N, 121°55'20.54"W
View Direction: East
Date & Time: 13 December 2018, 2:18 p.m.
Camera Focal Length: 50 mm
Camera Make / Model: 5DsR
Photo Source: Stantec
Number of Refined Layout Turbines Visible: 9



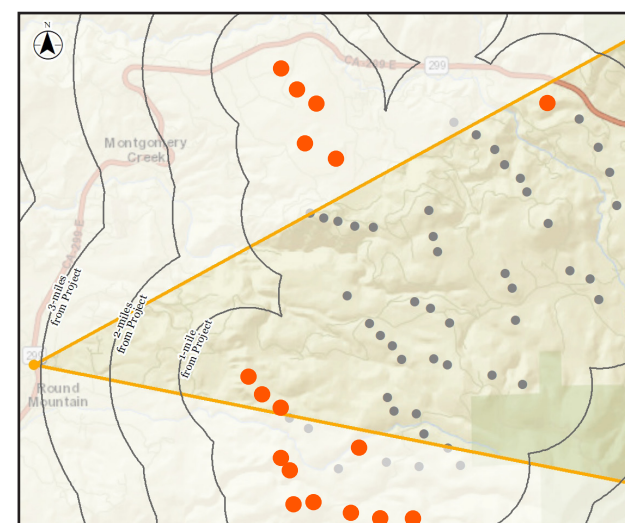
A: View from KOP 3 with 72-turbine layout simulated as evaluated in the FEIR. Proposed turbines would be visible between 3 and 6 miles away.



B: With the 48-turbine layout, the three nearest turbines visible in the right of the view evaluated in the FEIR would be removed. The height of other remaining turbines would appear lower along the ridgelines, though their increased rotor diameters would make them slightly more prominent.



C: Existing view from KOP 3 (outlined) within broader context.



D: Approximate location of turbines within the 40-degree horizontal field of vision represented in the above view. Orange dots indicate turbines removed in refined project layout.

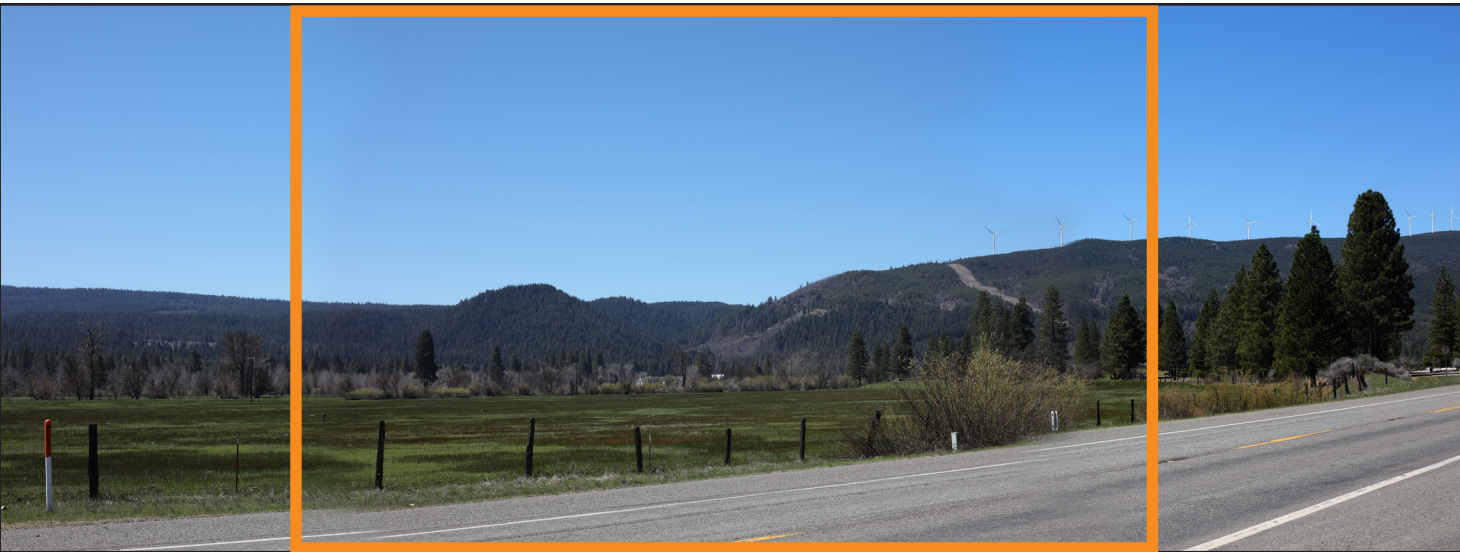
Specifications
Location: 40°48'11.94"N, 121°56'24.44"W
View Direction: East
Date & Time: 13 December 2018; 3:18 p.m.
Camera Focal Length: 50 mm
Camera Make / Model: 5DsR
Photo Source: Stantec
Number of Refined Layout Turbines Visible: 9



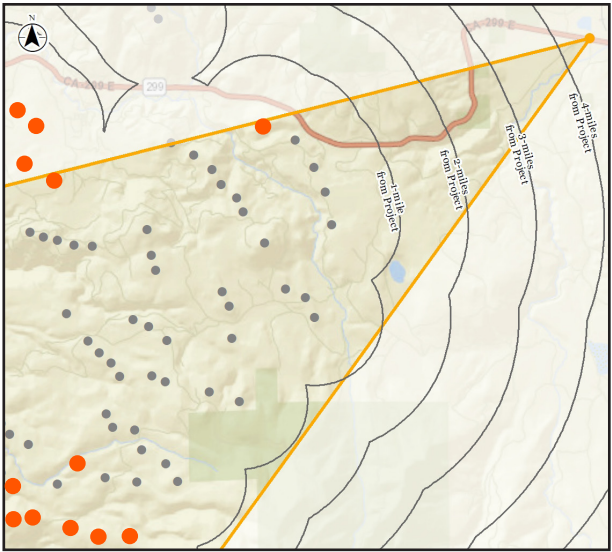
A: View from KOP 4 with 72-turbine layout simulated as evaluated in the FEIR. Two Project turbines would be visible between 4 and 6 miles away, in the center of the view.



B: With the 48-turbine layout, the nearer of the two Project turbines would be removed and the other would appear slightly shorter.



C: Existing view from KOP 4 (outlined) within broader context.



D: Approximate location of turbines within the 40-degree horizontal field of vision represented in the above view. Orange dots indicate turbines removed in refined project layout.

Specifications
Location: 40°52'27.26"N, 121°42'19.29"W
View Direction: West-Southwest
Date & Time: 18 April 2019, 12:07 p.m.
Camera Focal Length: 50 mm
Camera Make / Model: 5DsR
Photo Source: Stantec
Number of Refined Layout Turbines Visible: 1



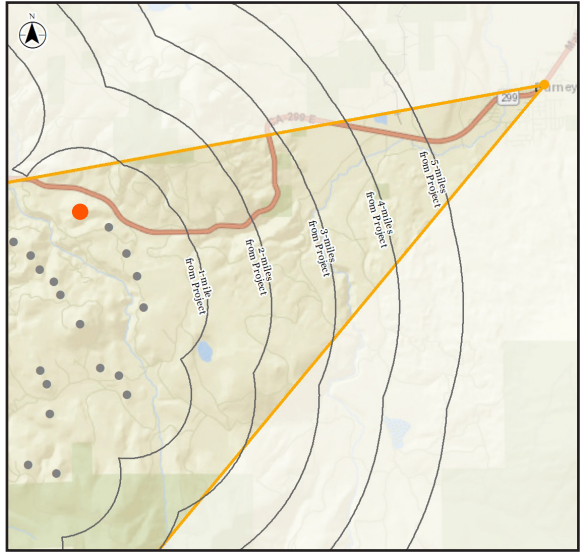
A: View from KOP 5 with 72-turbine layout simulated as evaluated in the FEIR. The Project turbines in the center of the view would be visible between 7 and 10 miles away and appear to the left of the existing Hatchet Ridge turbines.



B: With the 48-turbine layout, Project turbines would remain in view but appear lower in profile along the ridgeline.



C: Existing view from KOP 5 (outlined) within broader context.



D: Approximate location of turbines within the 40-degree horizontal field of vision represented in the above view. Orange dots indicate turbines removed in refined project layout.

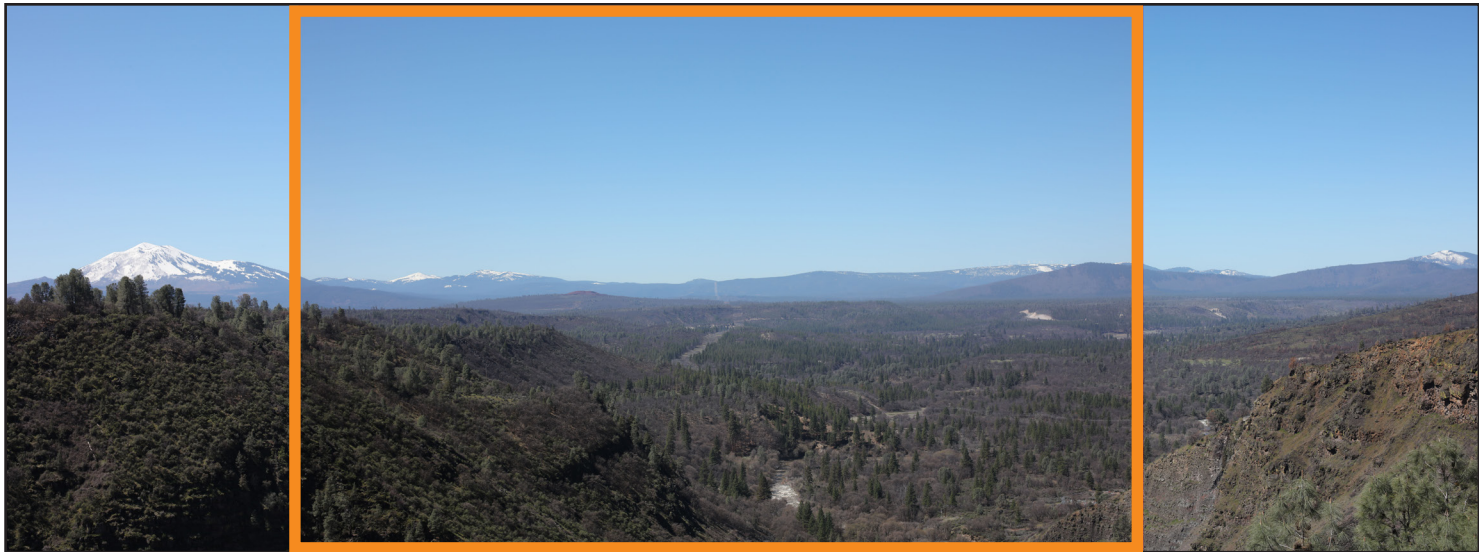
Specifications
Location: 40°53'4.21"N, 121°39'27.93"W
View Direction: West-Southwest
Date & Time: 18 April 2019, 11:08 a.m.
Camera Focal Length: 50 mm
Camera Make / Model: 5DsR
Photo Source: Stantec
Number of Refined Layout Turbines Visible: 7



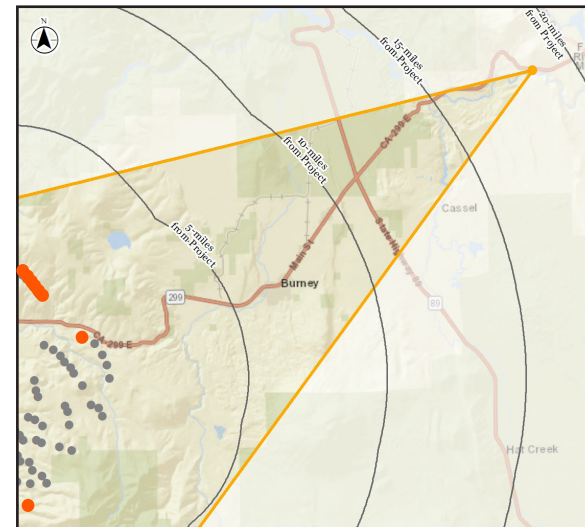
A: View from KOP 6 with 72-turbine layout simulated as evaluated in the FEIR. The 72-turbine layout would be visible just under 19 miles away, alongside the Hatchet Ridge Wind Project.



B: With the 48-turbine layout, fewer turbines would be discernable along, beneath, and beyond the distant ridgeline. The Project would remain broadly visible in the distance.



C: Existing view from KOP 6 (outlined) within broader context.



D: Approximate location of turbines within the 40-degree horizontal field of vision represented in the above view. Orange dots indicate turbines removed in refined project layout.

Specifications
Location: 40°59'33.61"N, 121°29'2.01"W
View Direction: Southwest
Date & Time: 18 April 2019, 11:42 a.m.
Camera Focal Length: 50 mm
Camera Make / Model: 5DsR
Photo Source: Stantec
Number of Refined Layout Turbines Visible: 23



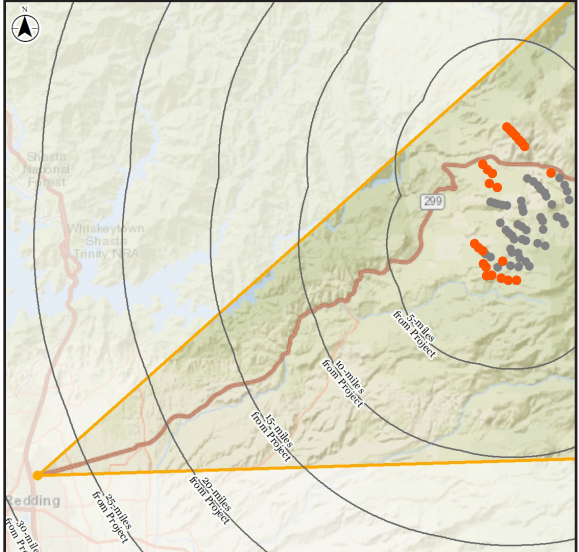
A: View from KOP 7 with 72-turbine layout simulated as evaluated in the FEIR. Project turbines would be visible just under 28 miles away.



B: With the 48-turbine layout, a reduced number of turbines would be visible within the same general area from this distance.



C: Existing view from KOP 7 (outlined) within broader context.



D: Approximate location of turbines within the 40-degree horizontal field of vision represented in the above view. Orange dots indicate turbines removed in refined project layout.

Specifications
Location: 40°36'48.54"N, 122°21'20.27"W
View Direction: East-Northeast
Date & Time: 18 April 2019, 1:26 p.m.
Camera Focal Length: 50 mm
Camera Make / Model: 5DsR
Photo Source: Stantec
Number of Refined Layout Turbines Visible: 48