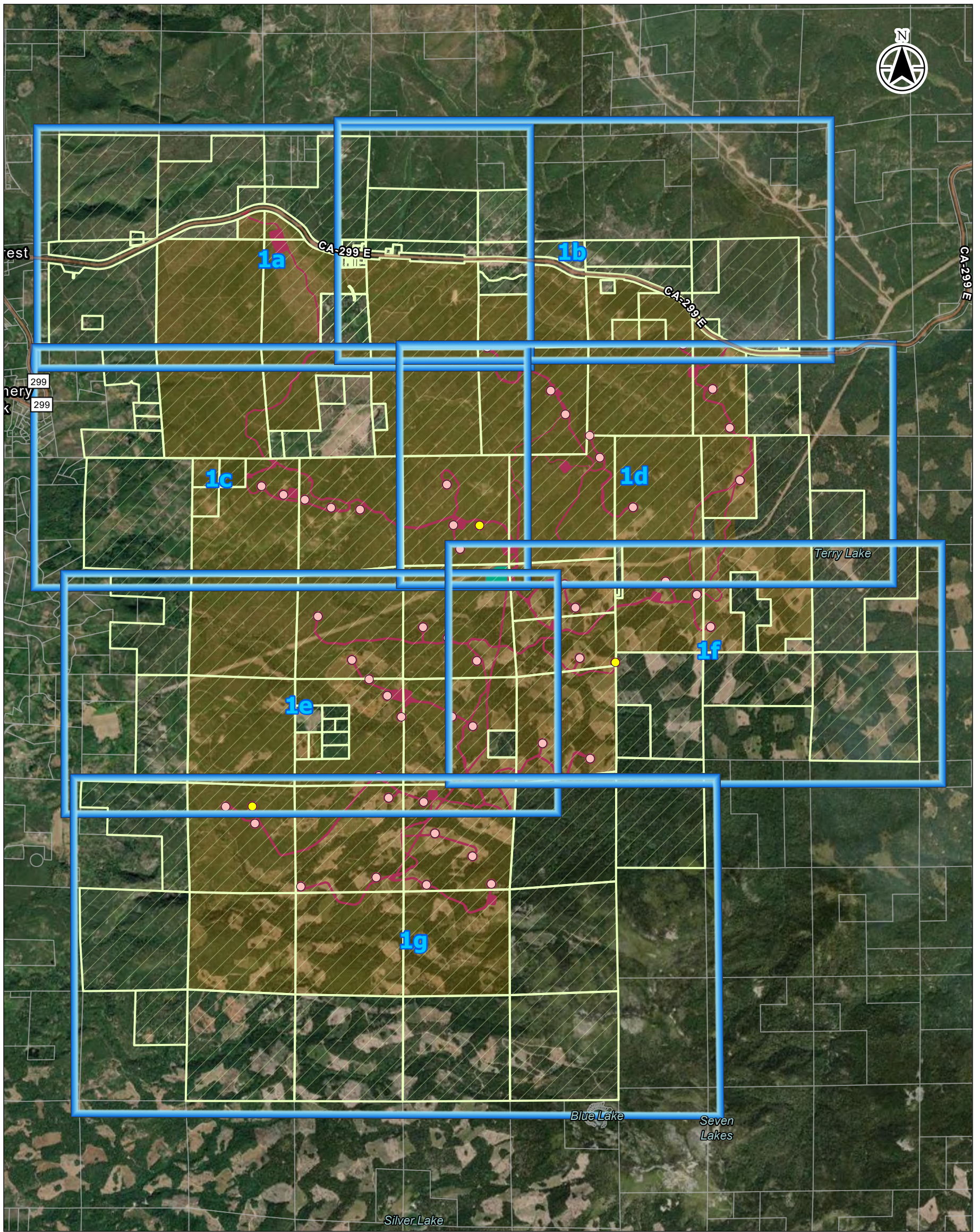










<b>DOCKETED</b>	
<b>Docket Number:</b>	23-OPT-01
<b>Project Title:</b>	Fountain Wind Project
<b>TN #:</b>	248296-10
<b>Document Title:</b>	Figure - Parcels within 1000 ft
<b>Description:</b>	N/A
<b>Filer:</b>	Caitlin Barns
<b>Organization:</b>	Stantec Consulting Services, Inc.
<b>Submitter Role:</b>	Applicant Consultant
<b>Submission Date:</b>	1/3/2023 2:43:41 PM
<b>Docketed Date:</b>	1/3/2023





-  Parcels within 1000ft of Lease Hold Area
-  Parcel Boundary
-  Lease Hold Area
-  Project Area
-  Substation and Switching Station
-  Met Tower Location
-  Turbine Location
-  Parcel Map Index

0 0.6 1.2  
Miles  
1:60,000 (At Original document size of 11x17)



Project Location 185804576

Shasta County, California

Client/Project

Fountain Wind

Figure No.

1

Title

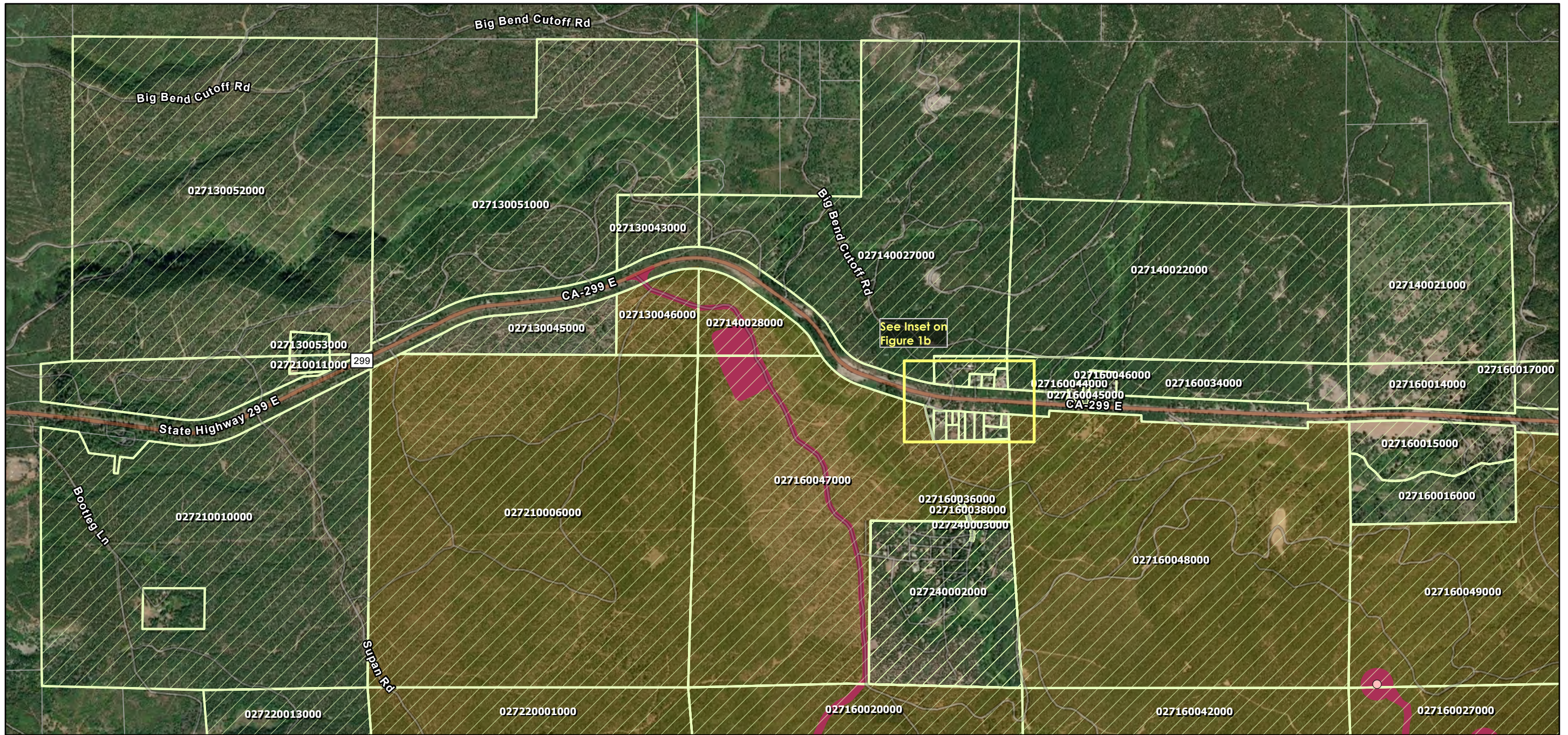
Notification Area-  
Parcels within 1000 feet of the  
Lease Hold Area

**Notes**  
1. Coordinate System: NAD 1983 2011 StatePlane California I FIPS 0401 Ft US

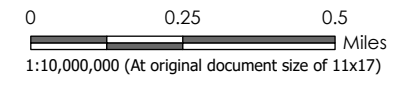
Disclaimer: Stantec assumes no responsibility for data supplied in electronic format. The recipient accepts full responsibility for verifying the accuracy and completeness of the data. The recipient releases Stantec, its officers, employees, consultants and agents, from any and all claims arising in any way from the content or provision of the data.

\\corp.asd\data\Virtual\_Workspace\workgroup\185804576\03\_data\gls\proj\FountainWind.aprx. Revised: 2022-10-26 By: Stantec GIS Dept.





- Parcels within 1000ft of Lease Hold Area
- Parcel Boundary
- Lease Hold Area
- Project Area
- Turbine Location



1. Coordinate System:  
 NAD 1983 (2011) State Plane Washington  
 South FIPS 4602 (US feet)  
 2. Service Layer Credits: Esri, NASA, NGA,  
 USGS, FEMA, Esri, HERE,  
 Garmin, SafeGraph, GeoTechnologies, Inc, METI/NASA,  
 USGS, Bureau of Land Management, EPA, NPS, USDA



Project Location 185804576  
**Shasta County, California**  
 Client/Project

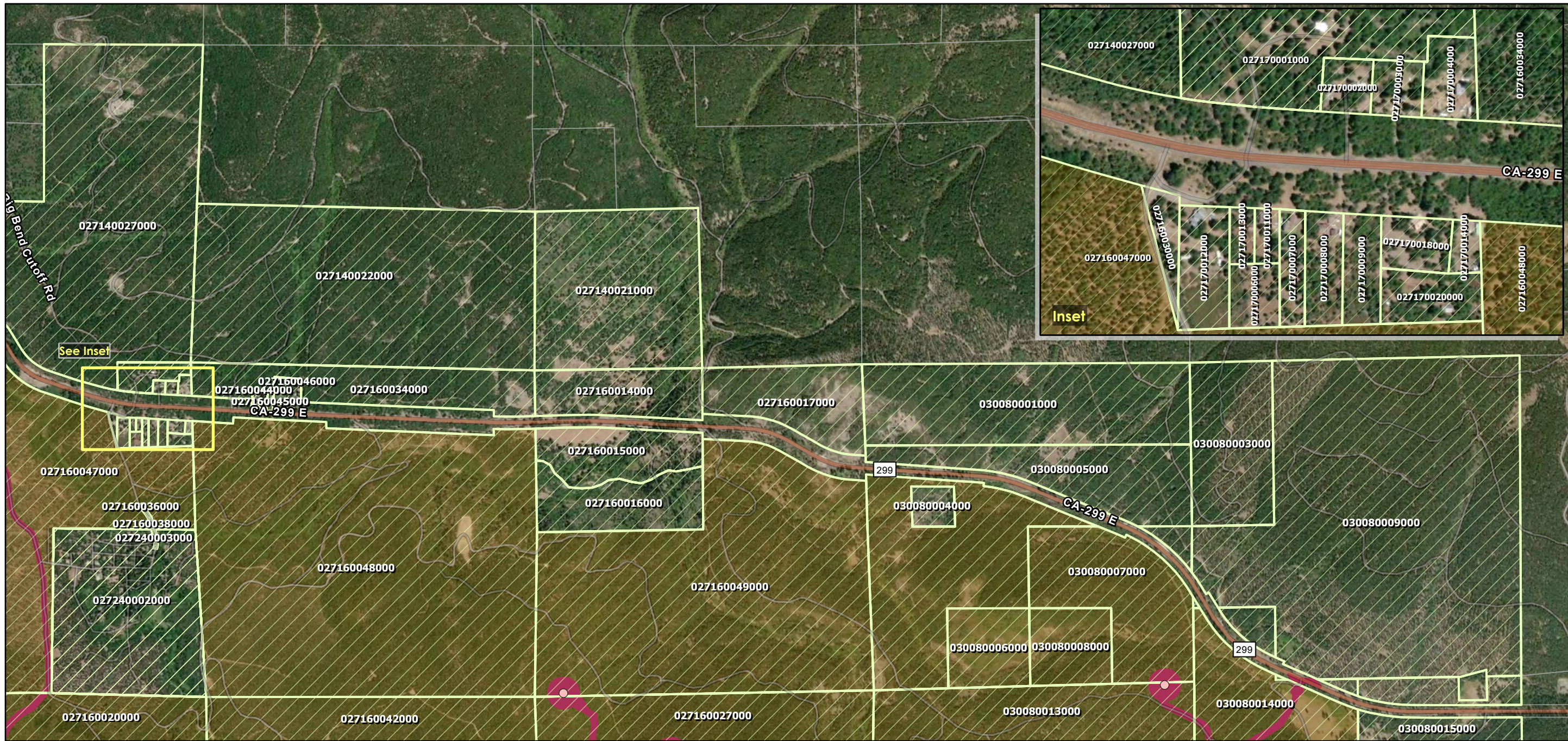
**Fountain Wind**  
 Figure No.  
**1a**  
 Title  
**Notification Area- Parcels within 1000 feet  
 of the Lease Hold Area**



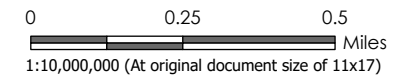
Stantec GIS Dept. \\corporate\stata\Virtual\_Workspace\workgroup\185804576\185804576\03\_data\gis\_cad\shasta\proj\FountainWind.aprx Date Saved: 2022-mm-26

Disclaimer: Stantec assumes no responsibility for data supplied in electronic format. The recipient accepts full responsibility for verifying the accuracy and completeness of the data. The recipient releases Stantec, its officers, employees, consultants and agents, from any and all claims arising in any way from the content or provision of the data.





- Parcels within 1000ft of Lease Hold Area
- Parcel Boundary
- Lease Hold Area
- Project Area
- Turbine Location



1. Coordinate System:  
 NAD 1983 (2011) State Plane Washington  
 South FIPS 4602 (US feet)  
 2. Service Layer Credits: Esri, NASA, NGA,  
 USGS, FEMA, Esri, HERE,  
 Garmin, SafeGraph, GeoTechnologies, Inc, METI/NASA,  
 USGS, Bureau of Land Management, EPA, NPS, USDA



Project Location 185804576

Shasta County, California

Client/Project

**Fountain Wind**

Figure No.

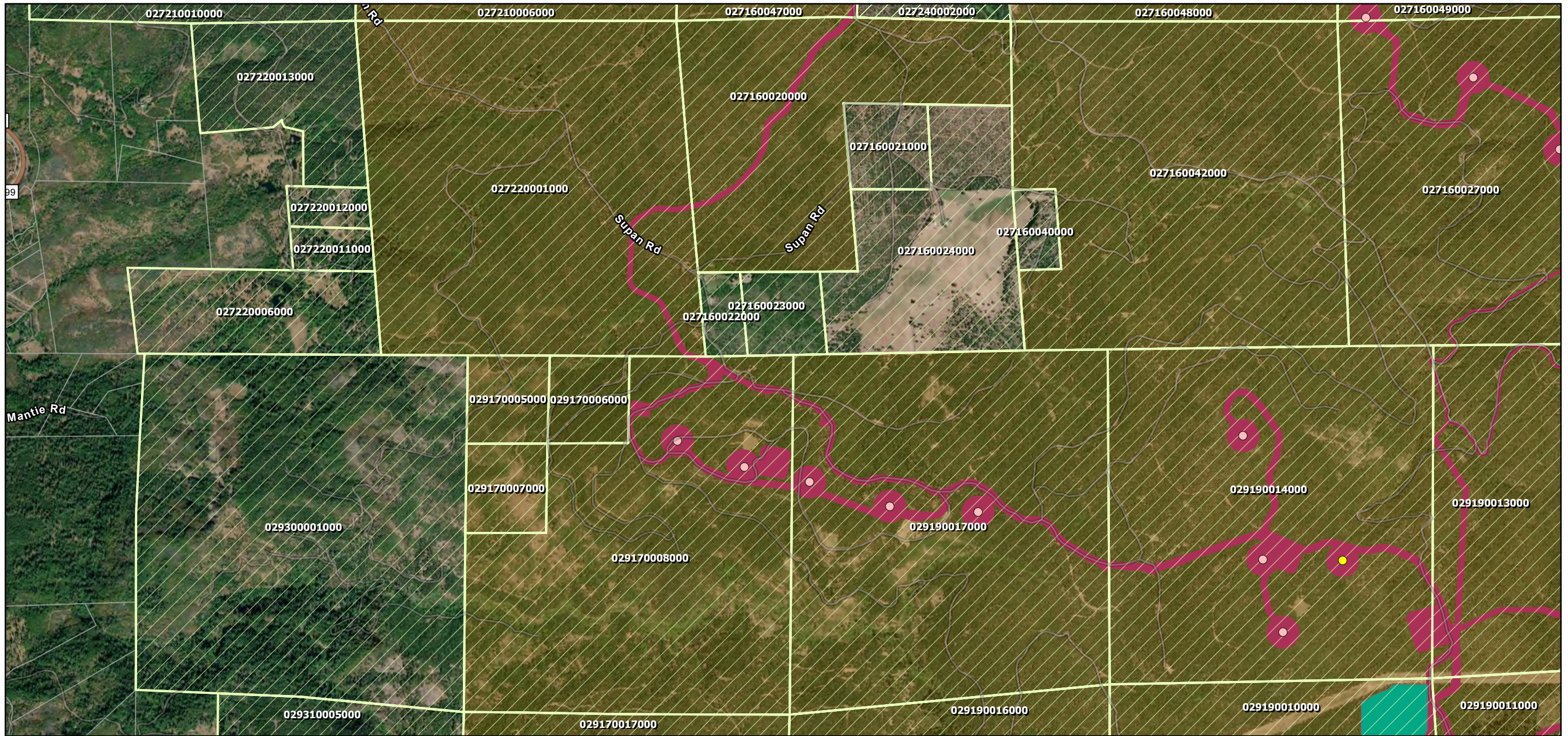
**1b**

Title

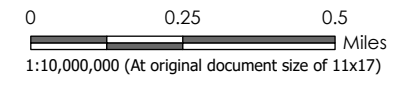
**Notification Area- Parcels within 1000 feet  
 of the Lease Hold Area**







- Parcels within 1000ft of Lease Hold Area
- Parcel Boundary
- Lease Hold Area
- Substation and Switching Station
- Project Area
- Met Tower Location
- Turbine Location



1. Coordinate System:  
 NAD 1983 (2011) State Plane Washington  
 South FIPS 4602 (US feet)  
 2. Service Layer Credits: Esri, NASA, NGA,  
 USGS, FEMA, Esri, HERE,  
 Garmin, SafeGraph, GeoTechnologies, Inc, METI/NASA,  
 USGS, Bureau of Land Management, EPA, NPS, USDA



Project Location 185804576  
**Shasta County, California**

Client/Project

**Fountain Wind**

Figure No.  
**1c**

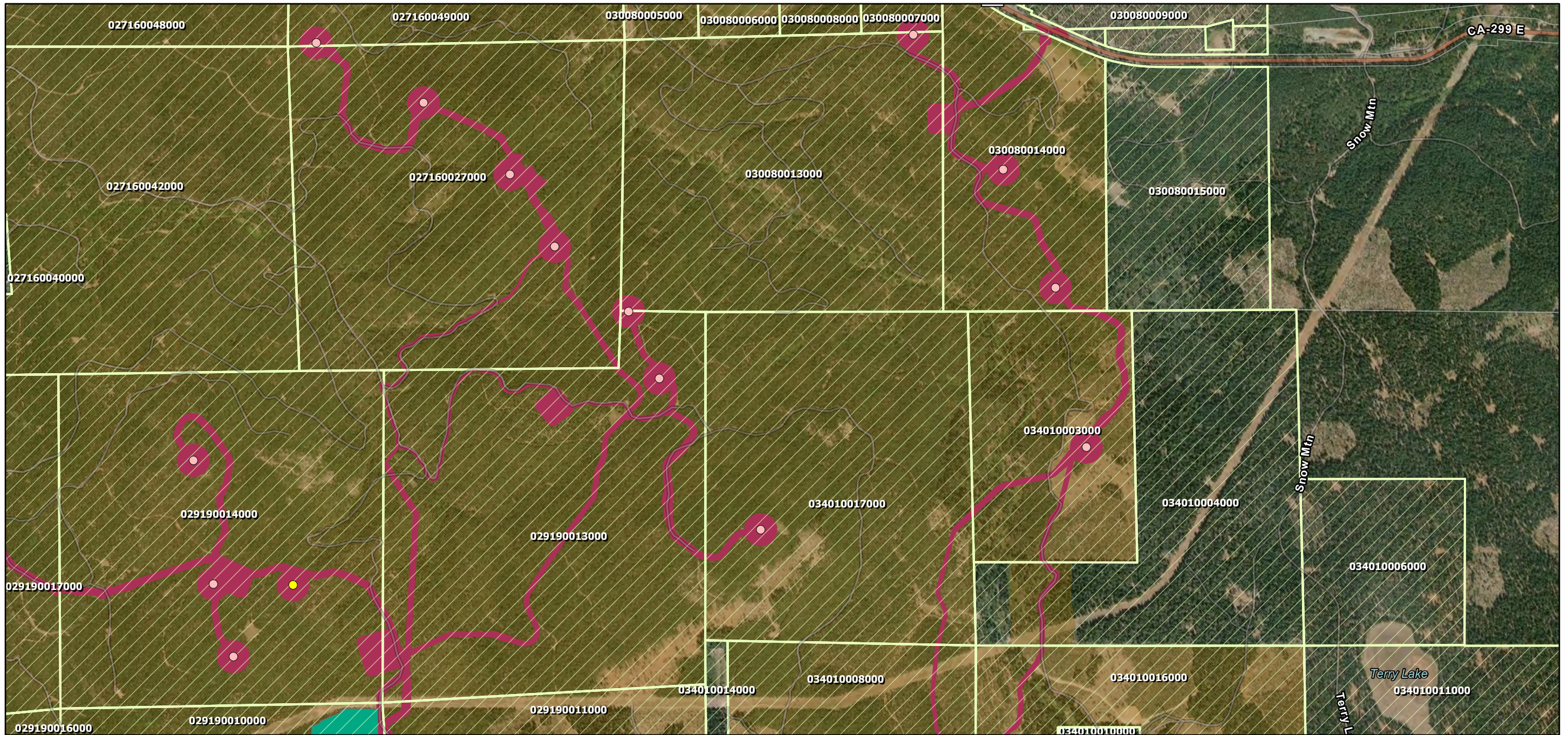
Title  
**Notification Area- Parcels within 1000 feet  
 of the Lease Hold Area**



Stantec GIS Dept. \\corporate\data\Virtual\_Workspace\workgroup\185804576\185804576\_03\_data\gis\_cad\shasta\proj\FountainWind.aprx Date Saved: 2022-mm-26

Disclaimer: Stantec assumes no responsibility for data supplied in electronic format. The recipient accepts full responsibility for verifying the accuracy and completeness of the data. The recipient releases Stantec, its officers, employees, consultants and agents, from any and all claims arising in any way from the content or provision of the data.





Source: GIS Dept. \\corporate\gis\workspace\workgroup\185804576\185804576\03\_data\gis\_cad\gis\proj\found\wind\1d.aprx Date Saved: 2022-mm-26



- Parcels within 1000ft of Lease Hold Area
- Parcel Boundary
- Lease Hold Area
- Substation and Switching Station
- Project Area
- Met Tower Location
- Turbine Location

0      0.25      0.5  
 Miles  
 1:10,000,000 (At original document size of 11x17)

1. Coordinate System:  
 NAD 1983 (2011) State Plane Washington  
 South FIPS 4602 (US feet)  
 2. Service Layer Credits: Esri, NASA, NGA,  
 USGS, FEMA, Esri, HERE,  
 Garmin, SafeGraph, GeoTechnologies, Inc, METI/NASA,  
 USGS, Bureau of Land Management, EPA, NPS, USDA



Project Location 185804576  
**Shasta County, California**

Client/Project

**Fountain Wind**

Figure No.

**1d**

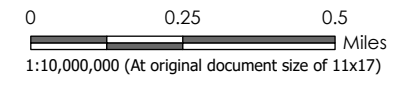
Title  
**Notification Area- Parcels within 1000 feet  
 of the Lease Hold Area**

Disclaimer: Stantec assumes no responsibility for data supplied in electronic format. The recipient accepts full responsibility for verifying the accuracy and completeness of the data. The recipient releases Stantec, its officers, employees, consultants and agents, from any and all claims arising in any way from the content or provision of the data.





- Parcels within 1000ft of Lease Hold Area
- Parcel Boundary
- Lease Hold Area
- Substation and Switching Station
- Project Area
- Turbine Location



1. Coordinate System:  
 NAD 1983 (2011) State Plane Washington  
 South FIPS 4602 (US feet)  
 2. Service Layer Credits: Esri, NASA, NGA,  
 USGS, FEMA, Esri, HERE,  
 Garmin, SafeGraph, GeoTechnologies, Inc, METI/NASA,  
 USGS, Bureau of Land Management, EPA, NPS, USDA



Project Location 185804576  
**Shasta County, California**  
 Client/Project

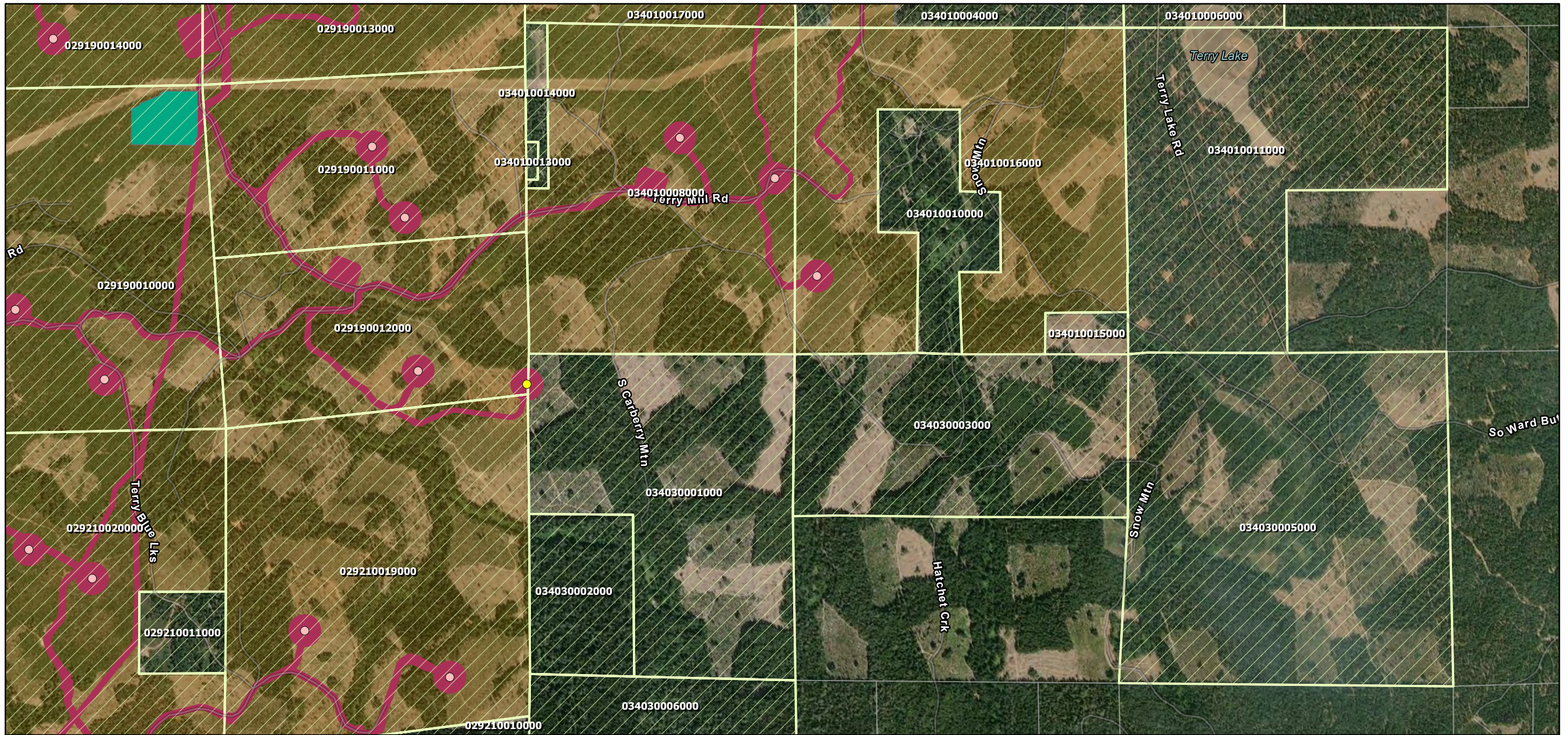
**Fountain Wind**  
 Figure No.  
**1e**  
 Title  
**Notification Area- Parcels within 1000 feet  
 of the Lease Hold Area**



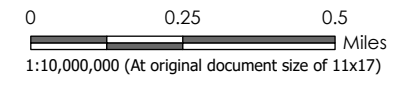
Stantec GIS Dept. \\corporate\data\Virtual\_Workspace\workgroup\185804576\185804576\_03\_data\gis\_cad\gis\proj\FountainWind.aprx Date Saved: 2022-mm-26

Disclaimer: Stantec assumes no responsibility for data supplied in electronic format. The recipient accepts full responsibility for verifying the accuracy and completeness of the data. The recipient releases Stantec, its officers, employees, consultants and agents, from any and all claims arising in any way from the content or provision of the data.





- Parcels within 1000ft of Lease Hold Area
- Parcel Boundary
- Lease Hold Area
- Substation and Switching Station
- Project Area
- Met Tower Location
- Turbine Location



1. Coordinate System:  
 NAD 1983 (2011) State Plane Washington  
 South FIPS 4602 (US feet)  
 2. Service Layer Credits: Esri, NASA, NGA,  
 USGS, FEMA, Esri, HERE,  
 Garmin, SafeGraph, GeoTechnologies, Inc, METI/NASA,  
 USGS, Bureau of Land Management, EPA, NPS, USDA



Project Location 185804576  
**Shasta County, California**  
 Client/Project

**Fountain Wind**  
 Figure No.  
**1f**  
 Title  
**Notification Area- Parcels within 1000 feet  
 of the Lease Hold Area**



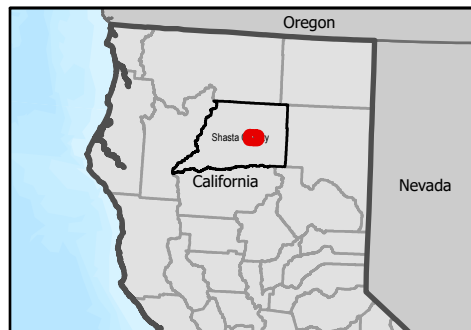
Source: GIS Dept. \\corporate\data\Virtual\_Workspace\workgroup\185804576\185804576\_03\_data\gis\_cad\gis\proj\FountainWind.aprx Date Saved: 2022-mm-26

Disclaimer: Stantec assumes no responsibility for data supplied in electronic format. The recipient accepts full responsibility for verifying the accuracy and completeness of the data. The recipient releases Stantec, its officers, employees, consultants and agents, from any and all claims arising in any way from the content or provision of the data.

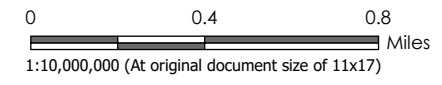




Stantec GIS Dept. \\corporate\data\Virtual\_Workspace\workgroup\185804576\185804576\03\_data\gis\_cad\gis\proj\FountainWind.aprx Date Saved: 2022-mm-26



- Parcels within 1000ft of Lease Hold Area
- Parcel Boundary
- Lease Hold Area
- Project Area
- Met Tower Location
- Turbine Location



1. Coordinate System:  
 NAD 1983 (2011) State Plane Washington  
 South FIPS 4602 (US feet)  
 2. Service Layer Credits: Esri, NASA, NGA,  
 USGS, FEMA, Esri, HERE,  
 Garmin, SafeGraph, GeoTechnologies, Inc, METI/NASA,  
 USGS, Bureau of Land Management, EPA, NPS, USDA



Project Location 185804576  
**Shasta County, California**  
 Client/Project

**Fountain Wind**  
 Figure No.  
**1g**  
 Title  
**Notification Area- Parcels within 1000 feet  
 of the Lease Hold Area**



Disclaimer: Stantec assumes no responsibility for data supplied in electronic format. The recipient accepts full responsibility for verifying the accuracy and completeness of the data. The recipient releases Stantec, its officers, employees, consultants and agents, from any and all claims arising in any way from the content or provision of the data.