

<b>DOCKETED</b>	
<b>Docket Number:</b>	23-OPT-01
<b>Project Title:</b>	Fountain Wind Project
<b>TN #:</b>	248296-2
<b>Document Title:</b>	Community Benefits Program
<b>Description:</b>	N/A
<b>Filer:</b>	Caitlin Barns
<b>Organization:</b>	Stantec Consulting Services, Inc.
<b>Submitter Role:</b>	Applicant Consultant
<b>Submission Date:</b>	1/3/2023 2:43:41 PM
<b>Docketed Date:</b>	1/3/2023



**Fountain**  
WIND PROJECT

# Fountain Wind Project Community Benefit Program



**JUNE 2021**

## About the Fountain Wind Community Benefit Program

ConnectGen's core values include community engagement and community investment. Listening to the community and helping with local needs is how we establish strong bonds with our host communities and neighbors. ConnectGen has spent the past two years listening to the community and is pleased to share the Fountain Wind Community Benefit Program. This program supports needs identified by the communities of Round Mountain, Montgomery Creek, and Big Bend, and all of Shasta County. The Fountain Wind Project Community Benefit Program consists of approximately \$2,000,000 in funding to local programs supporting education, public safety, fire protection, and workforce development. The local projects and organizations highlighted below were identified based on direct feedback from members of the community. ConnectGen is proud to support Shasta County through the following programs.

### Cedar Creek Elementary Redevelopment (\$1,000,000 Commitment)

Based on input from residents and project stakeholders within the Round Mountain and Montgomery Creek communities, ConnectGen has committed a \$1,000,000 direct investment in the local community for the purpose of creating and sustaining the Cedar Creek Resource Center at the Mountain Union Elementary School District's Cedar Creek Elementary School.

### Fall River RCD Fuel Reduction Project (\$250,000 Commitment)

ConnectGen recognizes that improved fire safety and fire protection is a matter of extreme importance in Shasta County. ConnectGen has partnered with the Fall River Resource Conservation District ("Fall River RCD") to develop and implement a fuel reduction and fuel break project along Hwy 299 and Big Bend Rd., adjacent to the Fountain Wind Project, and will be providing funding in the amount of \$250,000 to the Fall River RCD for design, permitting, and implementation of the Fuel Break Project.

### ShastaBeam Internet Expansion (\$200,000 Commitment)

Outreach with local stakeholders identified that one of the greatest needs in the community is access to reliable, cost-efficient internet service. ConnectGen has committed to funding two new communications towers, to be installed by Shasta Beam, that will provide access to internet service to over 90% of residential and business addresses in the Big Bend, Round Mountain, and Montgomery Creek communities, totaling approximately 700 addresses.

### Pit River Tribe TERO Contribution (\$250,000 Commitment)

Based on communication with the Pit River Tribe, ConnectGen has proposed funding in total of \$250,000 for Tribal workforce development programming to be administered by the Tribe's Tribal Employment Rights office (TERO). In addition, ConnectGen has teamed up with local labor organizations to offer apprenticeship opportunities specifically for tribal members that could lead to life-long careers working in various trades.

### Shasta County Sheriff's Office (\$150,000 Commitment)

Following discussions with the Shasta County Sheriff's Office, ConnectGen has proposed to commit \$150,000 in funding for county-wide public safety purposes. ConnectGen is working with the Sheriff's Department to identify the equipment and resources best suited to benefit from this funding.

### Community Access to Shasta Cascade Timberlands Property

Based on strong interest from local residents and members of the Pit River Tribe, ConnectGen worked with the Fountain Wind Project landowner, Shasta Cascade Timberlands, to develop a program to allow public access to the property for hunting, as well as access to culturally significant sites. This community access program will be administered by the landowner's land management company, with assistance from the full-time operational personnel that will be employed by the Fountain Wind Project.



# *Cedar Creek Resource Center*

A repurposing of the closed Cedar Creek Elementary School.



**APRIL 2021**

# Opportunity

One of ConnectGen's core values is community investment. As such, the Fountain Wind Project will play an important role in supporting community, education, safety, and economic opportunity for all citizens in Shasta County and in particular the Intermountain Region. Turning this commitment into a reality requires collaboration and inspiration from the community. Based on input from residents and leaders of the Round Mountain and Montgomery Creek community, three categories of benefit have been identified; 1) an increased public safety presence, 2) a youth educational center, and 3) community resource space that is accessible year-round for emergency services, adult education, and other programs. Based on this feedback, Fountain Wind has conducted multiple meetings with area stakeholders, including the Shasta County Sheriff's Office, Mountain Union Elementary School District, Shasta College, and the Tri County Community Network to evaluate specific needs of the community.

The Mountain Union Elementary School District's Cedar Creek Elementary School has been identified as an opportunity to provide a multitude of community benefits. The Cedar Creek Elementary school is an approximate 10,000 square foot facility located at 29771 Terry Mill Road in Round Mountain. The school originally opened in 1980, and has been closed since 2009 due to declining enrollment.

This building has adequate space and facilities to provide a wide range of benefits to residents of Round Mountain, Montgomery Creek, and the broader Intermountain Community, including youth education programs, community benefit programs, and enhanced public safety benefits. Proposed services and programs would include the following:

## YOUTH AND ADULT EDUCATION PROGRAMS RELATED TO:

- Development of a Regional/California cultural education center focused on Native American history, including tribal language training and how modern technologies and ancient technologies compare/contrast and influence one another<sup>1</sup>.
- Forestry and Resource History, Industry, and Management program, including experiential activities related to the Forestry/Natural Resource and Heavy Equipment Logging Operations Programs offered by Shasta College.
- Forest Fire Safety & Prevention, including a history of the 1992 Fountain Fire and other fire events in Shasta County. This program would cover the opportunities at the Shasta Union/CTE Fire Academy, located at Foothill High School, as well as the Fire Technology Program at Shasta College with introductions to Wildland Firefighting, Fire Prevention, and Emergency Response services.
- Energy resource education, including education and technical curriculum of the various energy resources local to Shasta County including hydropower, biomass cogeneration, wind, and solar.
- Food security and ag-tech education, in collaboration with regional research and development partners, creating an agriculture education center focused on small-scale agricultural design and cloud-based technologies, supporting the economic stability of low-acreage farms and local food production in providing a healthy food supply chain and sustainable revenue model for community members
- The above-mentioned programs can be combined into weeklong summer camps serving students throughout California or the western United States.

---

1. **Any program related to Tribal Cultural History would only be implemented based on the input and approval by the appropriate tribal representatives.**



#### **COMMUNITY BENEFIT PROGRAMS RELATED TO:**

- Mental Health Counseling resources provided in consultation with the Hill Country Community Clinic, Tri County Community Network, and the Shasta County Department of Health and Human Services.
- Workforce Skills Training provided in collaboration with Shasta College, Shasta Builders' Exchange, Tri County Community Network, and other regional providers. Training for adults interested in developing or improving a wide variety of skills related to economic growth and well-being.
- Adult education and training workshops including home-based business opportunities, health, fitness, finances and retirement, computer skills, cooking, and self-care programs offered by Shasta College. Preparation and training would occur at the center with additional learning modules provided for individuals to take home.
- Children's programs including preschool, childcare, and after-school programming in consultation with Tri County Community Network.
- Bright Futures family learning workshops, training, activities, and resources through First 5 Shasta.
- Free public access to high-speed internet, including dedicated technology stations for access to training resources and telehealth services.

#### **PUBLIC SAFETY BENEFITS IN THE FORM OF:**

- Utilities and meeting space for Shasta County Sheriff's officers.
- Community support during potential power outages; the facility could be equipped with a backup energy source in the event of a PG&E Public Safety Power Shutoff ("PSPS"), which are becoming more and more frequent, and could also provide a source of public Wi-Fi, water, nonperishable foods, and heat/air conditioning for those in need.
- Facilities and space for CALFIRE, CALTRANS, or other local EMS providers to use during special projects or in case of a local emergency.

The above recommendations are merely ideas and suggestions. The Cedar Creek Elementary building has the space to accommodate a variety of uses. Fountain Wind is flexible and excited to support any programs and initiatives that will provide long-lasting, multi-generational benefits to Shasta County, and in particular, Round Mountain, Montgomery Creek, and all of the Intermountain region.

## **Funding**

Fountain Wind is proposing to commit \$1,000,000 for the purpose of creating and sustaining the Cedar Creek Resource Center. The Fountain Wind Project would provide funding for upgrades and rehabilitation of the facilities at the commencement of Project construction and finalization of the repurposing program. Fountain Wind would distribute remaining funds during the operational life of the wind project for the ongoing support of the facilities and related programs.

Fountain Wind also expects to partner with local organizations to leverage additional funding through grants and donations from the public and private sectors with a focus on youth services, safety, and adult education/training. Examples of such sources include the Science, Technology, Engineering, and Math (STEM) grants through the Department of Education; Workforce Development grants through the Department of Labor, Tribal Living Language Grant Program through the U.S. Department of the Interior; and Agriculture Technology Grants through the U.S. Department of Agriculture. State education initiatives such as the California Adult Education Program, the Perkins Act, and Strong Workforce Programs are examples of joint K-12 & Community College programs with potential for supporting the needs of the Cedar Creek Resource Center. Overall, there are many resources already identified which would complement this repurposing opportunity.

# Implementation & Advisory Committee

The success of this initiative will require input and guidance from the community. The first stage would involve consultation with community leaders to confirm the feasibility and reception of this proposal. Next, Fountain Wind will constitute an Advisory Committee to guide the investment. Within six months of approval of the Fountain Wind Project by the Board of Supervisors, Fountain Wind would establish the Cedar Creek Repurposing Advisory Committee currently envisioned to be composed of the following members<sup>2</sup>:

- Mountain Union Elementary School District Superintendent (or designee) – Committee Chairperson
- Hill Country Community Clinic Representative
- Tri County Community Network (aka The Intermountain Community Center) Representative
- Pit River Tribe Representative
- Shasta College Representative
- Two at-large Community Members appointed by the Shasta County District 3 Supervisor
- One at-large Community Member appointed by the Shasta County Board of Supervisors
- Fountain Wind Representative

The Advisory Committee will commit to meeting at least once per quarter to guide the repurposing efforts and program planning. The Committee will conduct multiple community engagement sessions to gain input from the broader community on how the center could be used, how it would be named, and which areas of repurposing will be prioritized. Ultimately, it will be up to the Advisory Committee to decide how to administer the funding.

*Note: Repurposing of the Cedar Creek Elementary School will be subject to community acceptance and the appropriate district and school board approvals, as well as the ability to obtain the necessary building permits and meet all county and state regulatory requirements and standards.*

---

**2. The entities and organizations represented in this list are tentative. Confirmation of participation in the Advisory Committee would be required.**



## Fountain Wind Project & Fall River Resource Conservation District

# Fuel Break Project: Big Bend Road and Highway 299

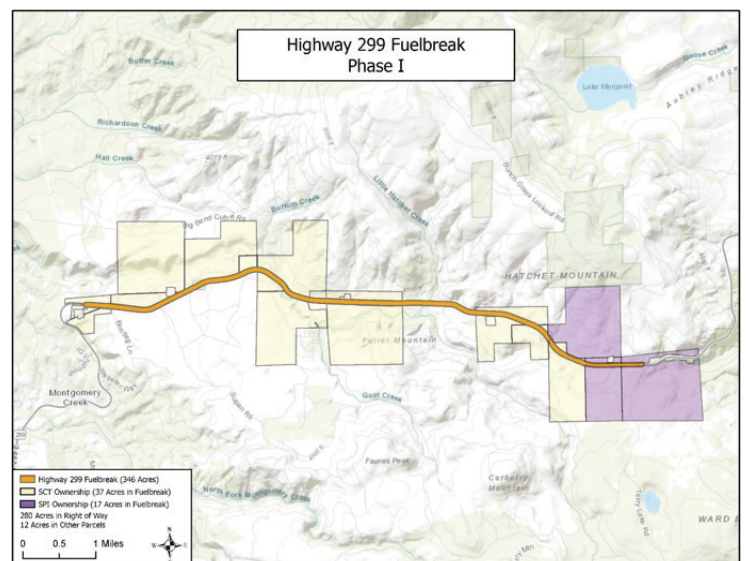
### Introduction

ConnectGen recognizes that improved fire safety and fire protection is a matter of extreme importance in Shasta County. In addition to the inherent fire safety and fire protection benefits created by the Fountain Wind Project, ConnectGen has identified additional fire protection enhancements in the vicinity of the project. ConnectGen has been working with the Fall River Resource Conservation District (“Fall River RCD”) to develop and implement a fuel reduction and fuel break project in the greater Burney, California area. After extensive consultation with local landowners and stakeholders in the vicinity of the Fountain Wind Project, it became apparent that a fuel break and fuel reduction project along approximately 23 linear miles of Big Bend Road and Highway 299 (the “Fuel Break Project”) has been a long-standing need of the community.

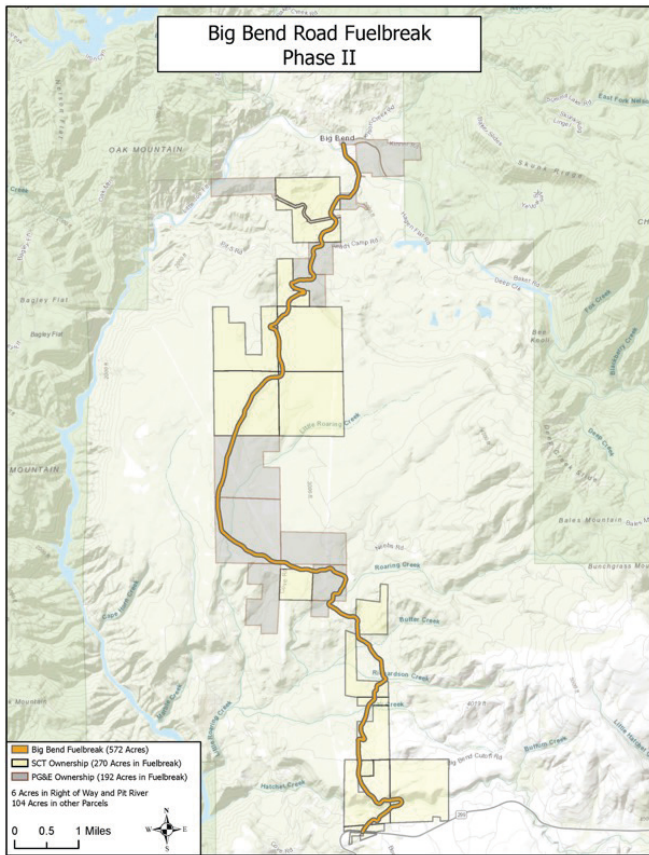
To address this need, ConnectGen has committed funding in the amount of \$250,000 to the Fall River RCD for design, permitting and implementation of the Fuel Break Project. Funding would be provided subject to the Fountain Wind Project’s successful completion of the California Environmental Quality Act review process, receipt of Conditional Use Permits from Shasta County, and commencement of construction of the Fountain Wind Project, which is expected to occur in spring 2022. In addition to the Fuel Break Project, the Fountain Wind Project will improved fire protection for the area by introducing a series of fire breaks within the project, increasing timberland access through a network of new and enhanced roads, and implementing an extensive Fire Prevention Plan in coordination with Shasta County, and CAL FIRE.

### Fuel Break Project

After initial identification of the project by ConnectGen in the fall of 2020, the Fall River RCD conducted an inspection of the fuel loadings along Big Bend Road and portions of Highway 299 between Big Bend Road and Hatchet Ridge. The locations of the proposed fuel break treatment areas are currently overstocked, unhealthy, and prone to high intensity wildfire. Based on the type and density of vegetation that was recorded during the inspection, the Fall River RCD recommended implementation of a 300-foot-wide shaded fuel break, 150-feet on either side of the portions of Big Bend Road and Highway 299 pictured on the right.







A shaded fuel break is a forest management strategy used for mitigating the threat of wildfire in areas where there has been a dangerous buildup of combustible vegetation. A shaded fuel break is created by the process of selectively thinning and removing the more flammable understory vegetation and fallen material while leaving the majority of larger, more fire tolerant trees in place. Shaded fuel breaks provide safe egress for residents and ingress for first responders while thinned forest stands and removal of ladder fuels provide anchor points for fire suppression and increase the chances of saving homes, and potentially lives.

The Fuel Break Project would reduce ladder fuels and establish a 300-foot-wide shaded fuel break totaling 23 linear miles, including 15 miles of Big Bend Road and 8 miles along Highway 299, representing approximately 873 total acres. The proposed treatment areas are along primary access points for local residents and would help to protect approximately 105 habitable structures. Material removed from these fuel breaks will be delivered to a locally owned and operated small scale bioenergy facility, such as Hat Creek Bioenergy, which is planned to be operational by 2022, or to an existing bioenergy facility such as Burney Forest Power.

The Fall River RCD has conducted meetings and gained support from local stakeholders, including the Big Bend Community Land Trust Inc. Board of Directors, the Big Bend Volunteer Fire Company, approximately twenty landowners representing over 1,500 acres of privately owned land, Indian Springs Elementary School, Cove Crest Farms, and a number of local businesses. Additionally, meetings have taken place with Shasta Cascade Timberlands, one of the largest landowners in the area, who is supportive of the Fuel Break Project. The California Department of Transportation (“CAL TRANS”) is also interested in participating in the project.

To further leverage the contribution by ConnectGen, the Fall River RCD submitted a grant application to the California Department of Forestry and Fire Protection (“CAL FIRE”) in May 2021 as part of the California Climate Investments Department of Forestry and Fire Protection. This program provides matching funds for fuel break projects which allows the Fall River RCD to double the size, scope, and benefit of the project.

## Fuel Break Project Benefits

The Fuel Break Project is located on primary evacuation routes for the residents of Big Bend, Hillcrest, Moose Camp, and Montgomery Creek, and could likely impact residents from Burney and Johnson Park in the event of a fire traveling from the east toward those communities. The project would serve to protect approximately 105 habitable structures located near the treated areas. The communities that stand to benefit from the Fuel Break Project are located in low-income, high wildfire threat areas which have received limited vegetation treatments in the recent past.

The project will also serve to reduce hazardous fuel along critical transportation corridors within these Wildland Urban Interface (“WUI”) areas in eastern Shasta County and offers direct public safety benefits to local residents and landowners in a CAL FIRE-designated high-priority treatment area.

In addition, the project will serve to lessen the probability of high-severity wildfires spreading into and through the WUI areas, destroying property and surrounding forest lands, by allowing first responders to safely deploy fire suppression resources along these corridors. The Fuel Break Project will serve to protect critical infrastructure, including communication towers, electrical transmission and distribution lines, as well as a small elementary school located within the town of Big Bend.

## About Fall River Resource Conservation District

The Fall River RCD was organized in 1957 and consists of approximately 1.2 million acres in northeastern California, including parts of Shasta, Siskiyou, Lassen, and Modoc Counties. The mission of the Fall River RCD is to support private and public landowners in the use and management of natural resources that will ensure the sustained highest economic, social, and environmental benefits of these resources.

The Fall River RCD is uniquely positioned to lead the implementation of the Fuel Break Project given its track record of project execution in eastern Shasta County and its existing partnerships with State and local entities such as the Sierra Nevada Conservancy, CAL TRANS, and CAL FIRE. The Fall River RCD has successfully developed and implemented over twenty-five projects in the last 10 years totaling over \$10 million.

## About Fountain Wind Project

The Fountain Wind Project is a proposed 216 MW wind project in northeastern Shasta County. The project will be located on privately owned timberlands near Highway 299, approximately six miles west of Burney, and is anticipated to be operational by the end of 2023. The Fountain Wind Project is proud to support local organizations such as the Fall River RCD and is committed to supporting Shasta County through its proposed Community Benefit Program. This program consists of approximately \$2,000,000 in funding to local programs covering education, public safety, fire protection, and workforce development.

# *Proposal for Expanded Internet Service to Round Mountain, Montgomery Creek, Big Bend Communities*



## **Fountain Wind Project and Shasta Beam Team Up to bring Much-Needed Wireless Internet to Intermountain Region**

### **The Issue**

Whether you live in the rural regions of Shasta County or one of the three cities, access to reliable, fast internet service has become vital to many parts of our lives. Good internet service is essential for public safety, education, business, health care, e-commerce, employment, and overall access to information.

Unfortunately, large portions of the County around the Round Mountain, Montgomery Creek, and Big Bend communities do not have access to broadband internet service. In the limited places where it is available, service is not always reliable, reasonably priced, and the connection speeds are slower than the benchmark standard established by the FCC.<sup>2</sup> Children relying on remote learning or seniors seeking telemedicine care require more robust service than what is available in the limited locations where internet connection can be found.

Through Fountain Wind Project's outreach efforts with local community members and residents, it became clear that one of the most widely identified needs in the community was access to reliable, cost-efficient internet service.

### **The Solution**

The Fountain Wind Project, as part of its mission to bring broad community benefits to the Intermountain Region, in particular the Round Mountain, Montgomery Creek, and Big Bend communities, has teamed up with ShastaBeam Wireless Internet to expand wireless internet service in the region. In the Fall of 2020, ConnectGen's Director, Henry Woltag, reached out to Andy Main, managing partner of Mountain Tower and Network Company, LLC, dba ShastaBeam, of Redding, California, for assistance in evaluating the expansion opportunity.

ShastaBeam provides wireless internet service in other parts of rural Shasta County using a series of towers that allow residents and businesses in the most remote areas to obtain internet service. This service does not require line of sight satellite dishes or access to cable or fiber networks but still provides high-speed, reliable, unlimited data internet service at multiple plan levels of service to match individual's needs.

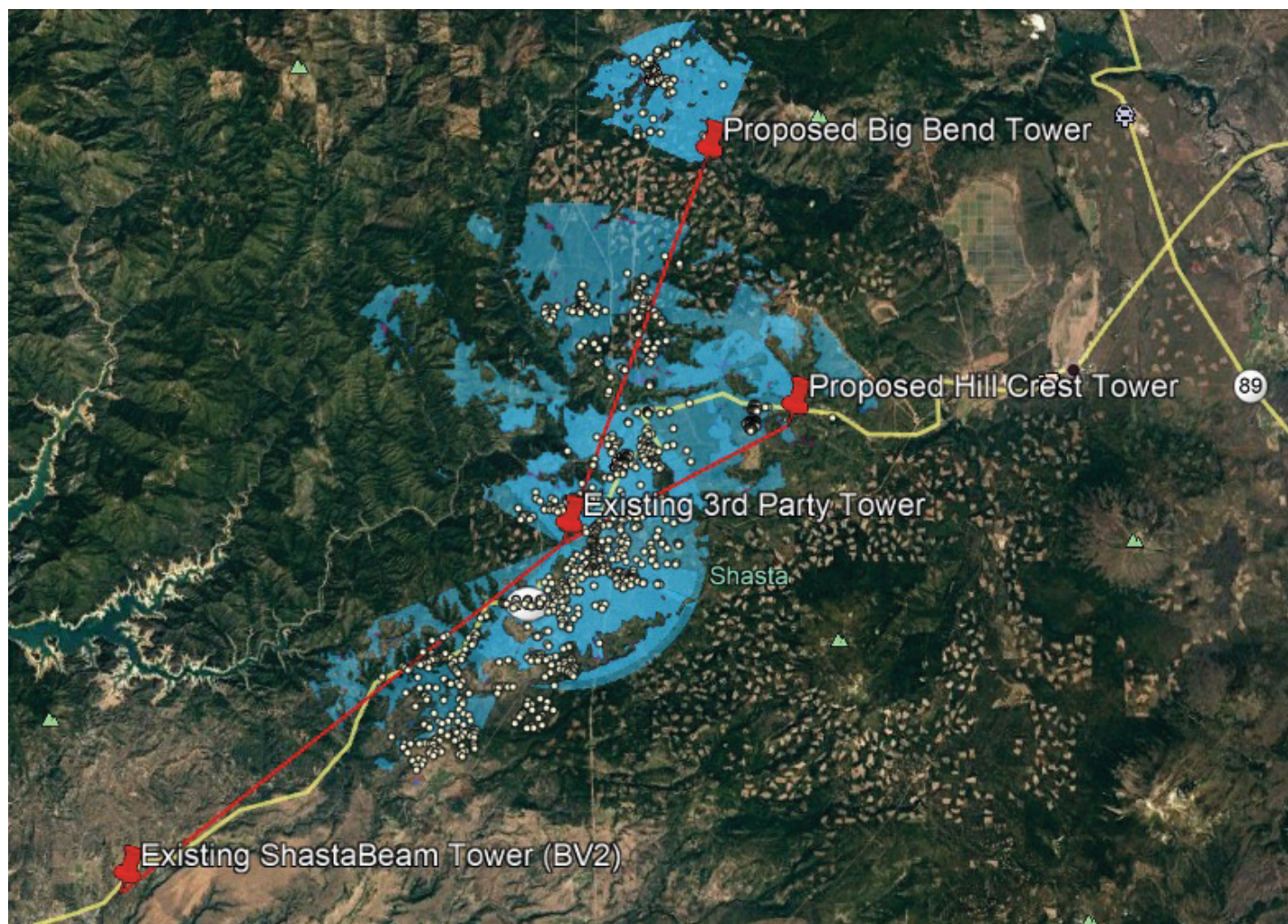
Fountain Wind and ShastaBeam have identified locations for two potential additional tower sites that would offer coverage to over 90% of specified residential and business addresses in the Big Bend, Round Mountain, and Montgomery Creek communities, totaling approximately 700 addresses. Most of these locations currently have either no or very limited access to internet service. The proposal would also provide an alternative to the current single incumbent utility in the area that presently provides limited internet service.

---

1. **The Federal Communications Commission established a benchmark for 25 Megabits per second ("Mbps") download and 3 Mbps upload speed <https://docs.fcc.gov/public/attachments/FCC-20-50A1.pdf>. Current service provided by Frontier Communications is limited to 6 Mbps upload.**



The diagram below shows the proposed tower network that would provide ShastaBeam's internet service to the subject area. The blue shading represents the area where internet services would be available, given the location of the new towers while taking into account the topography of the surrounding areas. Facilities could be located at the top of the existing tower west of Round Mountain. The white dots represent the residential and business addresses represent while the red lines represent wireless services provided between ShastaBeam's towers, starting at the existing Bella Vista Ridge (BV2) tower.



As part of the Project's Community Benefit Program, Fountain Wind has proposed to fund the installation of the two new towers and associated equipment, estimated at \$200,000. By offsetting the initial capital cost of installing the new infrastructure, ShastaBeam will be able to reduce the cost of internet service to the residents and business owners within the Round Mountain, Montgomery Creek, and Big Bend communities.. ShastaBeam is also committed to working with the local communities to obtain financial benefits offered by the FCC's recently enacted Emergency Broadband Benefit Program ("EBBP")<sup>2</sup>.

By funding the construction of these new internet facilities, Fountain Wind builds on its commitment to be a long-term contributor and member to this community. Prior to Fountain Wind's outreach effort, there were no plans to bring this expanded service to the Round Mountain, Montgomery Creek, and Big Bend area due to the dispersed population and rugged terrain. However, Fountain Wind believes access to fast, reliable internet service is essential to the region's public health, business, education, and safety and is proud to sponsor this project with ShastaBeam.

---

1. The benefits of the FCC's EBBP are explained in greater detail at <https://www.fcc.gov/consumer-faq-emergency-broadband-benefit>. The funding provided by this program are intended to support broadband services and devices to help low-income households gain access to reliable internet service.

## About ShastaBeam Wireless Internet

ShastaBeam Wireless Internet has been providing high-speed Internet services to Northern California since 2004. The company-owned network of 30+ towers service North State communities in areas where cable and fiber services provided by AT&T, Spectrum, and other urban internet providers do not offer services. ShastaBeam services are an estimated 90% rural based.

In 2020, ShastaBeam was instrumental in helping to develop new county ordinances that allow for the development of fixed wireless antenna towers without the requirement of going through the expensive and time-consuming California Environment Quality Act (“CEQA”) process. As a result of the new ordinance, ShastaBeam can now erect new internet service towers in Shasta County economically and efficiently, increasing its ability to service the County’s rural population with just a building permit application. In 2021, ShastaBeam is on schedule to install one tower per month in its market area.

ShastaBeam is in the early stages of evaluating how to bring its internet service further into parts of Eastern Shasta County and the Intermountain Region. By working with the Fountain Wind Project to expand into the communities of Round Mountain, Montgomery Creek, and Big Bend, provides ShastaBeam the opportunity to evaluate the possibility of expanding further east into the Burney community.

## About Fountain Wind

The Fountain Wind Project is a proposed 216 MW wind project in northeastern Shasta County. The project will be located on privately owned timberlands near Highway 299, approximately six miles west of Burney, and is anticipated to be operational by the end of 2023. The Fountain Wind Project is committed to supporting Shasta County through its proposed Community Benefit Program. This program consists of approximately \$2,000,000 in funding to local programs covering education, public safety, fire protection, and workforce development.



March 17, 2021

Pit River Tribe Tribal Employment Rights Office

Attention: Josiah Jacobs, Director

36970 Park Ave

Burney, CA 96013

**Re: Support for the Pit River Tribe's Tribal Employment Rights Office**

Dear Mr. Jacobs,

CG Fountain Wind LLC ("ConnectGen") is currently developing the Fountain Wind Project ("Project") in northeastern Shasta County and provides this letter to memorialize the conversations and current understanding between ConnectGen and the Pit River Tribe ("Tribe") regarding support for the Tribe's Tribal Employment Rights Office ("TERO") and potential employment opportunities relating to the construction of the Project.

**Background**

In late December 2020, the Tribe contacted ConnectGen to discuss tribal employment opportunities related to the construction of the Project and a potential contribution to the TERO program. The Tribe communicated that the goal of the TERO is to provide tribal members with resources, training and tools needed to gain employment on and around tribal lands. We understand the TERO is funded, in part, by collecting fees from projects located on tribal lands. Though the Project is not located on tribal owned lands, and, therefore, not subject to the TERO fee, in the interest of benefitting local communities and in furtherance of building a strong relationship with the Tribe, ConnectGen offers its support, as set forth below.

ConnectGen is committed to benefitting communities neighboring the Project and has been actively engaging with local Project stakeholders since 2019 to identify needs and develop a Community Benefit Program to address those needs. One of the identified needs, as highlighted by the Tribe, is workforce skills training for local community members interested in new and enhanced employment opportunities. ConnectGen supports programs designed to bring long-lasting, generational benefits to local communities. Accordingly, ConnectGen welcomes the opportunity to work with the Tribe to achieve TERO's training objectives, which align with the Project's and ConnectGen's goals.

**Apprenticeship Opportunities**

In furtherance of Project-related efforts to support local job training and creation, a Letter of Commitment with the State Building and Construction Trades Council of California, which includes the Northeastern California Building & Construction Trades Council ("State Trades"), was signed. The State Trades, with the support of ConnectGen, agree to offer tribal members access to apprenticeship opportunities in connection with the construction of the Project. It is the State Trades' goal to provide employment opportunities related to the Project's construction and enable tribal members to establish life-long careers in construction on other projects throughout the North State.



## TERO Commitment

In furtherance of Project-related efforts to support local job training and creation, a Letter of Commitment with the State Building and Construction Trades Council of California, which includes the Northeastern California Building & Construction Trades Council (“State Trades”), was signed. The State Trades, with the support of ConnectGen, agree to offer tribal members access to apprenticeship opportunities in connection with the construction of the Project. It is the State Trades’ goal to provide employment opportunities related to the Project’s construction and enable tribal members to establish life-long careers in construction on other projects throughout the North State.


ConnectGen proposes to directly fund certain additional training activities through TERO’s existing programs and will seek to engage qualified and approved tribal members for various construction-related positions. Specifically, ConnectGen proposes the following support.

1. ConnectGen will make a contribution of One-Hundred Thousand Dollars (\$100,000.00) to TERO within thirty (30) days of final completion of construction of the Project (“Completion of Construction”), estimated to occur in late 2023.
2. ConnectGen will fund sustained contributions of Ten Thousand Dollars (\$10,000.00) per year for fifteen (15) years, commencing on the first anniversary of the Completion of Construction.
3. ConnectGen will engage qualified and approved tribal cultural resources monitor(s) to assist with monitoring of certain construction activities in areas identified by the Tribe as culturally sensitive.
4. ConnectGen will collaborate with the general contractor for the Project to engage qualified and approved tribal members to perform certain environmental monitoring tasks such as Storm Water Pollution Prevention Plan (SWPPP) monitoring and erosion control monitoring.
5. ConnectGen will collaborate with the State Building and Construction Trades Council of California to provide tribal members with the opportunity to participate in the State Trades’ apprenticeship programs, pursuant to the attached letter from the State Trades, dated March 1, 2021.

## Conclusion

ConnectGen has been fortunate to meet with a wide range of tribal representatives on several occasions over the course of the Project’s development. As communicated in these meetings, ConnectGen remains committed to collaborating with the Tribe through development, construction, and operation of the Project to bring direct and indirect benefits to the local community. We recognize the Tribe is an integral member of the local community which is why ConnectGen proposes the support outlined in this letter. We look forward to the opportunity to work with the Tribe as the Project progresses.

Sincerely,



Caton Fenz

Chief Executive Officer

CG Fountain Wind LLC

---

*1. All personnel on the Project site are required to comply with relevant health, safety, security, and environmental policies, and procedures and applicable law and regulations (“Site Rules and Legal Requirements”). ConnectGen, its contractors, the State Trades, and others will provide training for on-site personnel with respect to the Site Rules and Legal Requirements.*

Andrew Meredith  
President  
Northeastern CA Building & Construction Trades  
900 Locust Street, Suite 2  
Redding, CA 96001

March 1<sup>st</sup>, 2021

Henry Woltag  
ConnectGEN LLC  
1001 McKinney Street, Suite 700  
Houston, TX 77002



**RE: Opportunities for Pit River Tribal Members**

Henry:

I wanted to reach out formally, in writing, to discuss the opportunities available for members of the Pit River Tribe within the Northeastern California Building & Construction Trades Council. While I know the urge is to just apply these opportunities as they relate to work on the proposed Fountain Wind Project, I want to first clarify that any opportunities discussed here are career opportunities that will extend well beyond the construction phase of the project.

As you are aware, our affiliates and their apprenticeship programs are the industry leaders when it comes to training. Additionally, they are each aligned with a contractor base that constructs all levels of construction projects throughout the North State. As such, we are able to offer life-changing apprenticeship slots and journeyman level positions to area residents, all of which result in true pathway to the Middle Class. We pride ourselves in doing just that: connecting people from all backgrounds with careers offering Middle Class wages, benefits, and dignity in the workplace.

After speaking with you regarding possibilities for members of the Pit River Tribe, I must admit I was excited. As an organization, we have struggled to connect members of local native tribes with the opportunities that exist in the Building Trades. I share your hope that we can utilize the opportunities that exist as it relates to your proposed project to change that narrative once and for all. We are committed to working with ConnectGEN and the tribe to get tribal members connected with careers, not just on the Fountain Wind Project, but on projects all throughout the North State.

To demonstrate our commitment to engaging with Pit River Tribe members, I wanted to offer some tangible opportunities. First, I would like to offer to host a hiring fair associated with the Building Trades for tribal members at a place and time of the tribe's choosing. In addition, I am willing to commit to working with Pit River tribal leadership to directly slot tribal members into our various apprenticeship programs at the onset of the Fountain Wind Project. Our hopes are that these opportunities would be life changing for tribal members.

We are committed to working with you to make sure the work generated by the Fountain Wind Project has as much of a meaningful impact as possible for Shasta County and its residents. I truly hope there is a way to make sure this commitment can engage members of the Pit River Tribe. If there is anything else we can do to accomplish that goal, please let me know.

Respectfully,

**Andrew Meredith**  
President  
Northeastern CA Building & Construction Trades

**Subject: SCT Wind Project Community Access**

**To: James Bullen**

**From: John Vona**

**Date: 03/24/2021**

---

## Memorandum

### Community and Tribal Access Outline

#### Purpose:

##### Community Access

To allow members of the Moose Camp, Round Mountain, Montgomery Creek, and Burney communities the ability to access portions of SCT property for specific recreational or culturally important activities under a program that will be managed by wind farm staff.

##### Pit River Tribe Access

Allow members of the Pit River Tribe access to areas if the property for:

- a. Harvesting of plant species that are of cultural or medicinal importance.
- b. Visitation of previously identified sacred or culturally significant sites
- c. Performance of culturally significant ceremonies that do not involve the use of fire.

##### Community Access Outline:

- 1) SCT will provide hunting access to members of the Moose Camp, Round Mountain, Montgomery Creek, Big Bend and Burney communities during specified hunting seasons.
- 2) During specified hunting seasons, SCT will leave the gate open on a main wind-power access road, which also serves as log-haul road, to allow hunter access on the Anderson tract south from State Highway 299.
- 3) ConnectGen and FWS Forestry will collaborate on how best to notify the hunting community about this access program.
- 4) FWS will develop a permit system for individual hunters
- 5) ConnectGen and FWS to develop a "check-in and check-out" for hunters, managed by ConnectGen security out from the on-site operations and maintenance (O&M) building.
- 6) For the spur roads off the mainline road that are not gated or rocked, we will likely install gates on those roads. If the spur roads are rocked, rather than gated, we can consider expanding access based on how the hunting program is going.
- 7) ConnectGen and FWS will coordinate with the local communities regarding when hunting would temporarily be prohibited by on-site activities including active timber harvest operations, red flag warnings, and major wind farm maintenance related activities.

##### Pit River Tribe Access Outline

- 1) Reach out to leaders of the Pit River tribe and understand the following:
  - a. Where they would like to access
  - b. What activities they would like to perform
  - c. Time of year they would like to access
  - d. Numbers of individuals who want access



- 2) From the information gathered on the questions above, we would develop either a permit system or simply offer the tribal members the opportunity access the property at specified times of the year to allow members to pursue the requested activities.