

DOCKETED	
Docket Number:	23-OPT-01
Project Title:	Fountain Wind Project
TN #:	248296-1
Document Title:	Applicant Board of Supervisors Presentation
Description:	N/A
Filer:	Caitlin Barns
Organization:	Stantec Consulting Services, Inc.
Submitter Role:	Applicant Consultant
Submission Date:	1/3/2023 2:43:41 PM
Docketed Date:	1/3/2023

FOUNTAIN WIND PROJECT



Fountain
WIND PROJECT

Shasta County Board Of Supervisors Presentation
October 26, 2021

[VIDEO]

Refined Project

Based on feedback provided during the Planning Commission hearing, we reduced the permanent footprint from 713 to 475 acres and total turbines from 72 to 48, with fewer roads, stream crossings and impacts to habitat and wildlife.

Key refinements include:

- Removed 24 turbines
- Decreased turbine tip height by 10%
- Condensed Project Area by 50%
- Reduced permanent and temporary disturbance by 33% and 35%

These refinements respect private property rights while also bringing tremendous benefits to Shasta County.



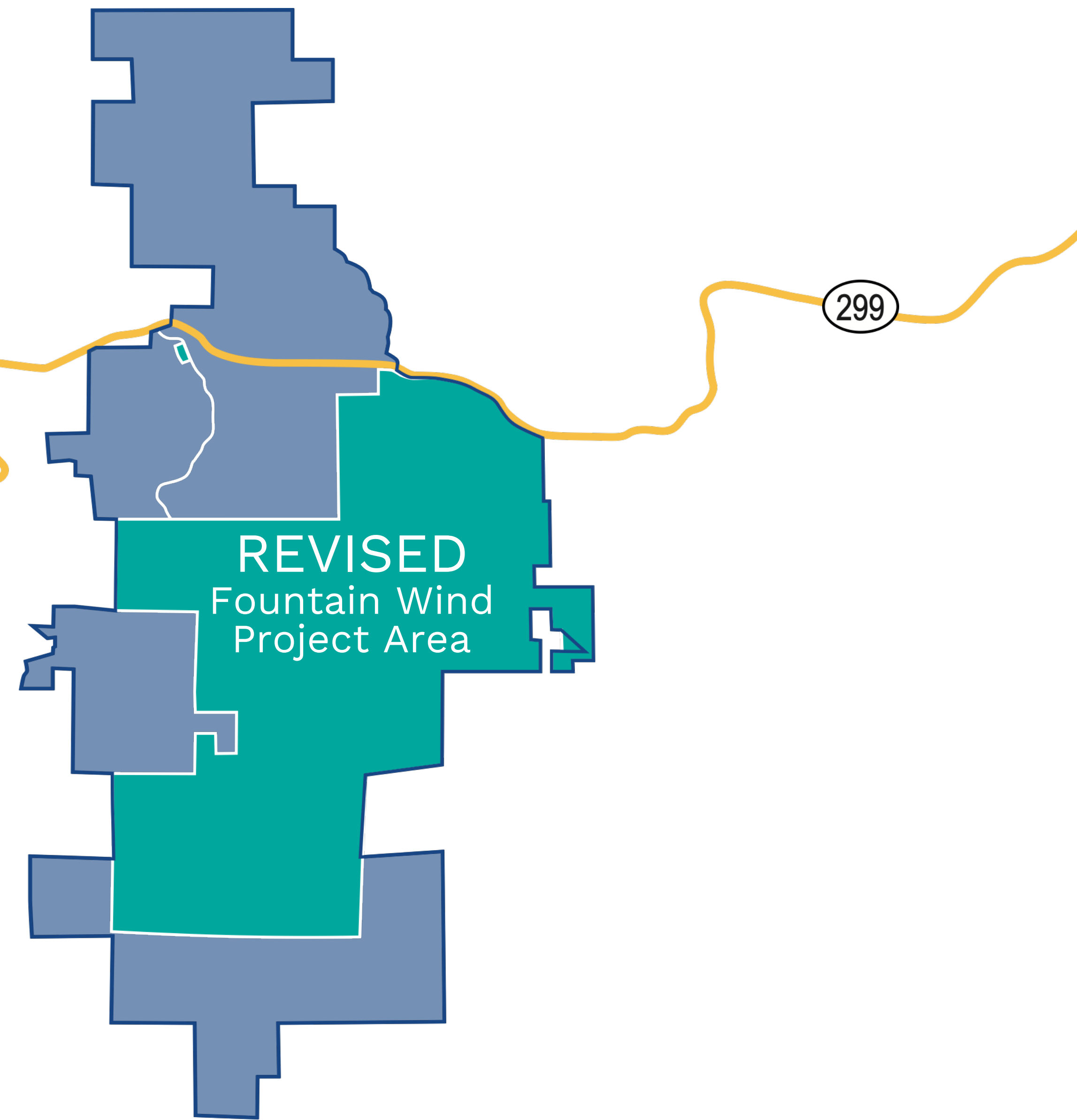
Reduced Impacts

Significantly reduces or eliminates visibility of turbines from Moose Camp, Round Mountain, and Montgomery Creek

Results in a more compact project and less fragmentation to the landscape and land use

Less physical disturbance to the natural and cultural environments

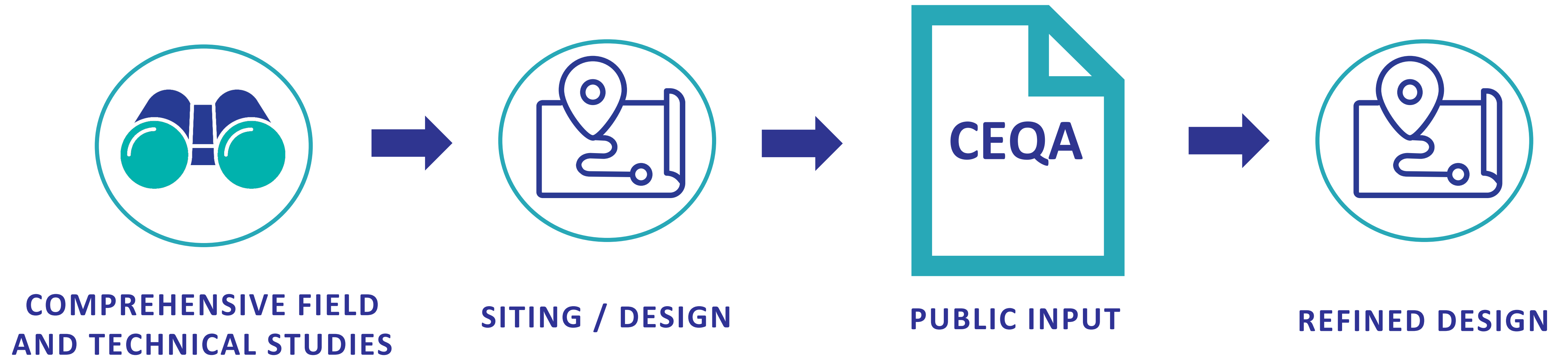
Reduced risk to avian species



THE REFINED PROJECT AREA USES **50% LESS** OF THE PROPERTY



This is CEQA Working



- Fountain Wind has made revisions throughout the development process to reduce impacts and in response to stakeholder feedback.
- The additional refinements are fully within the footprint studied and disclosed through the CEQA process.
- Board of Supervisors have 'De Novo' review of permit application and are not bound by Planning Commission review or decision.



Community Outreach

Our team completed unprecedented outreach in Shasta County to listen to as many individuals as would share their thoughts with us.



Dozens of one-on-one and small group meetings and open house meetings in the project area



Site visits with project stakeholders



Mailed project info to more than 3,000 households



Conversations with more than 1,000 Shasta County residents



Community Endorsements

Strong county-wide support for Fountain Wind Project

Shasta Voices

Shasta Builders Exchange

Tri-County Community Network

J.F. Shea Construction

Western Shasta Resource Conservation
District

State Building & Construction Trades
Council of California

Fall River Resource Conservation District

Pit Resource Conservation District

Bales Mountain Quarry

Roseburg Forest Products

Operating Engineers Local Union No. 3

Northeastern Building & Construction
Trades Council

Hundreds of Residents of Shasta County



New Jobs & Long-term Revenue for the County



200
CONSTRUCTION JOBS



12
WELL-PAYING LONG-TERM JOBS



\$50 MILLION
IN PROPERTY TAX REVENUE



\$3.5 MILLION
IN SALES TAX REVENUE



Local Workforce & Suppliers Will Benefit



LABORERS



OPERATORS

ELECTRICIANS

IRONWORKERS

**TIMBER
HARVESTING**

CONCRETE SUPPLY

**READY MIX
SUPPLY**

REBAR SUPPLY

**O&M BUILDING
CONSTRUCTION**



OFFICE TRAILERS

**HEAVY EQUIPMENT
RENTALS**

RESTAURANTS

HOTELS

**CAMPGROUND/ RV
PARKS**

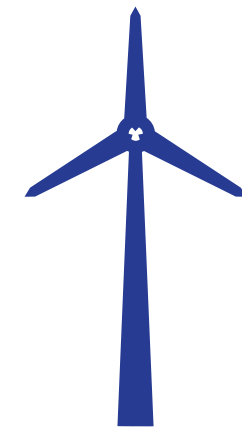


Contributes to Fire Protection in Shasta County

Fountain Wind will have significant fire safety systems in place at the project site and will contribute to the overall fire protection of the surrounding area.



1,600 Acres
New Fire
Breaks



Enhanced Fire
Detection &
Suppression in
Turbine Nacelle



\$350,000 Funding
for Wildfire Safety
Projects



38 miles of
Enhanced
Access Roads



New 5,000-
Gallon Water
Tanks



Significant Community Benefits Program



\$1 million commitment

to Shasta County Sheriff's Office to support public safety priorities



\$100,000 commitment

to the Shasta County Fire Safe Council and the Western Shasta Resource Conservation District for updating the Countywide Community Wildfire Protection Plan



\$1 million Endowment

for the communities of Round Mountain & Montgomery Creek, to be administered by a local advisory committee



\$200,000 commitment

to ShastaBeam to enhance internet service in the Intermountain region



\$250,000 commitment

to the Fall River RCD to permit and implement shaded fuel breaks along Highway 299 and Big Bend Road



Community Access

to Shasta Cascade Timberlands Property for hunting and culturally significant activities



Myths

vs.

Facts

1

ConnectGen is not allowed to present a refined project to the Board of Supervisors.

There is no restriction under County code or California law, CEQA or otherwise, that prohibits ConnectGen from reducing the scope of the project as long as it is within the previous footprint of analysis. The refined project is entirely within the scope of the original analysis.

2

This project will prevent CAL FIRE from using air tankers or helicopters when responding to a fire.

CAL FIRE disagrees. Per written response from Shasta County Fire in the Planning Commission staff report “the presence of the turbines would not result in the creation of a no-fly zone.”



Myths

vs.

Facts

3

Construction of the wind farm will result in impact to ancestral burial and sacred sites

The project has been extensively studied and surveyed by qualified archeologists and has been designed to avoid impact to all identified prehistoric sites in the area. To date, locations of ancestral burial grounds or sacred sites have not been identified. The EIR includes mitigation commitments to monitor and avoid sacred sites.

4

ConnectGen is trying to buy support from the community

Much like the Hatchet Wind project, ConnectGen is committed to bring significant benefits to the local communities and all of Shasta County. ConnectGen established a \$2.8 million Community Benefit Program based on direct feedback from members of the community. ConnectGen has been working with the community to identify and develop these commitments for the past several years and has continued to improve and enhance the collective community benefits program.



Why Fountain Wind Should be Approved



ConnectGen is an experienced, well-backed company that is committed to investing \$350 million in the county



Tremendous amount of economic and community benefits



Strong community support



Environmental impacts have been addressed

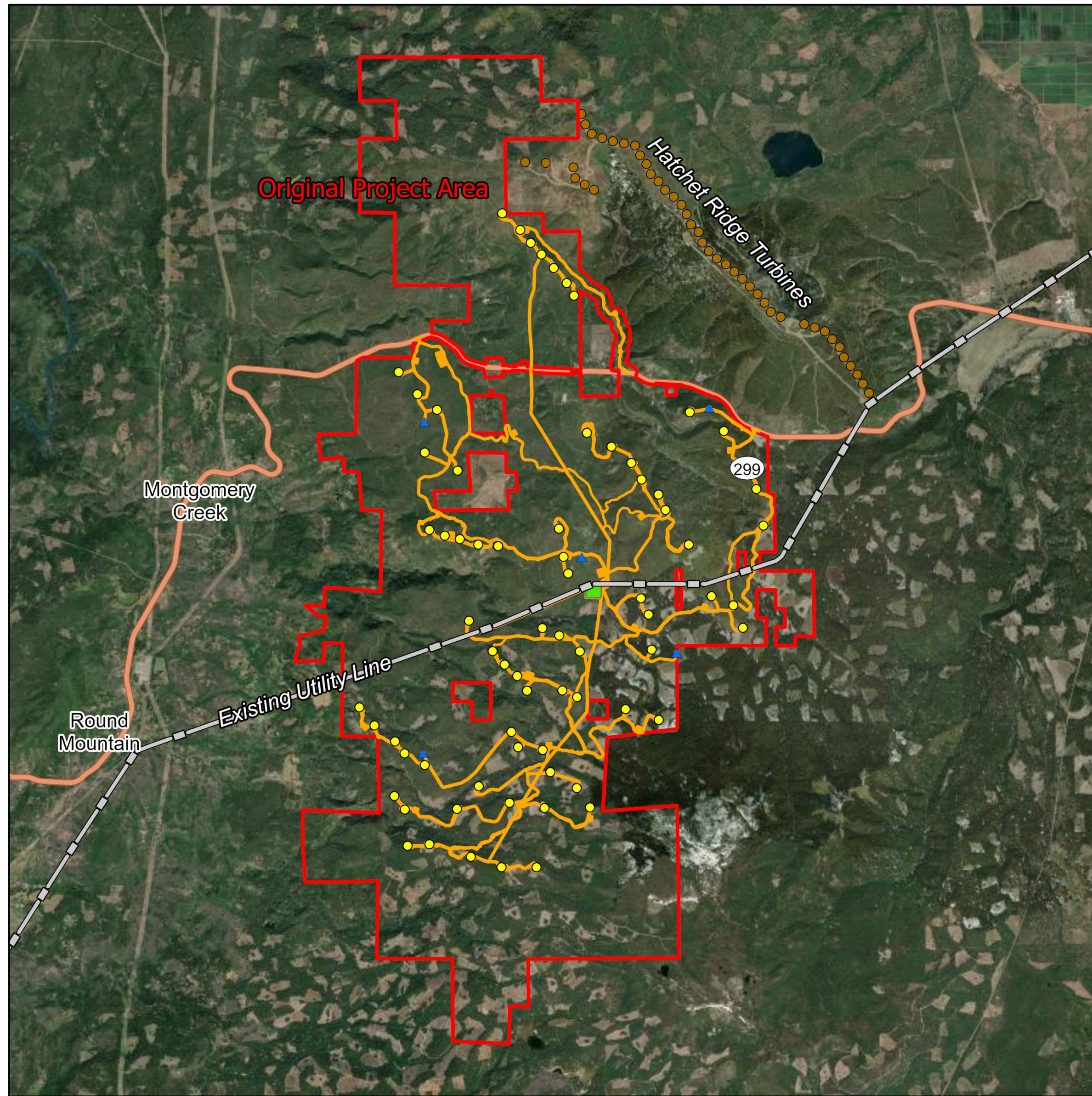
Taking all these factors under consideration, Fountain Wind will be a net benefit to the health, safety, peace, and morals to Shasta County and all its citizens.



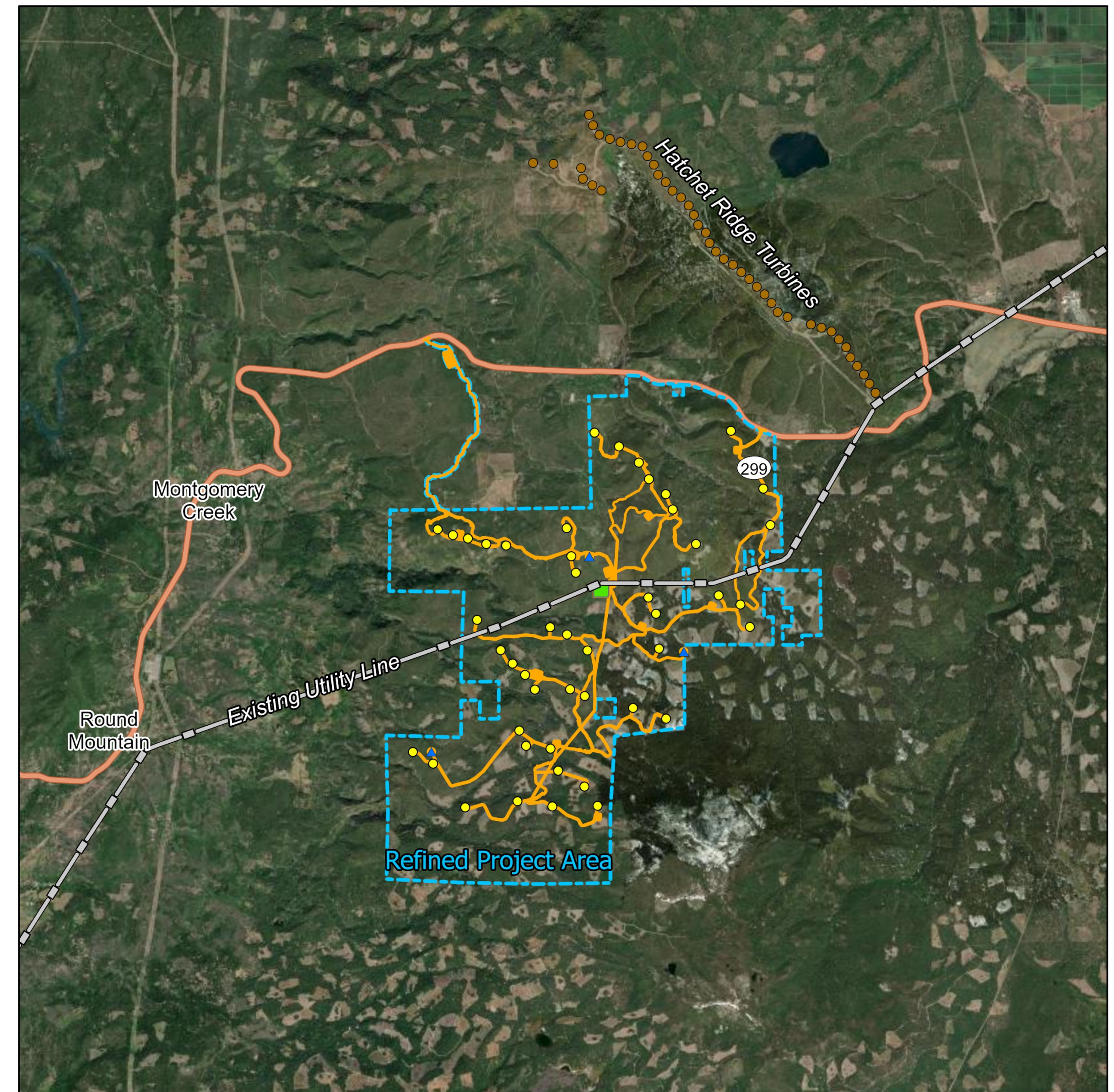
Appendix



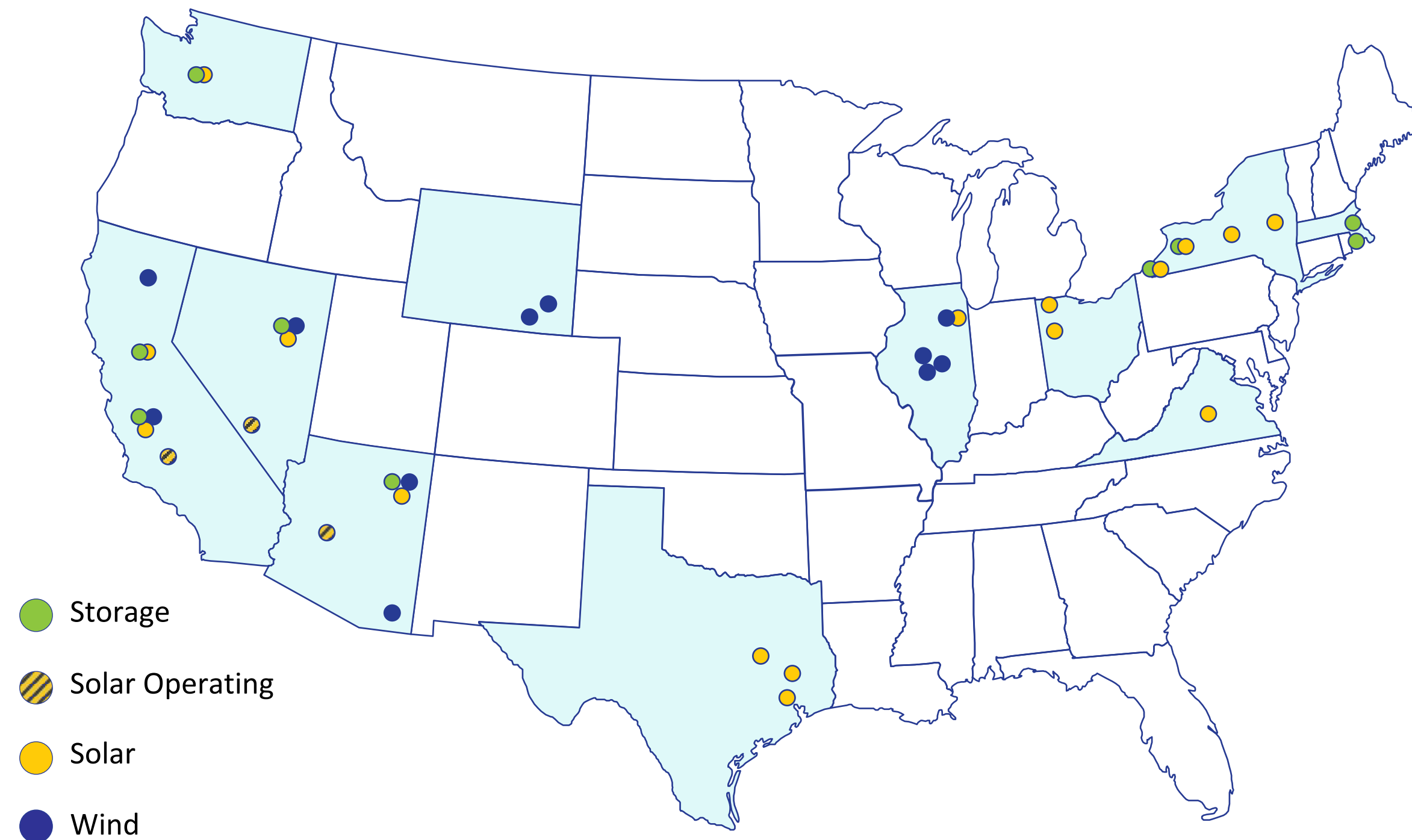
Original Project



Refined Project



ConnectGen Experience in North America



ConnectGen is an independent renewable energy company developing large-scale wind, solar, and energy storage projects across North America.

ConnectGen has established a portfolio of over 10,000 MW of wind, solar, and energy storage projects across 11 states.

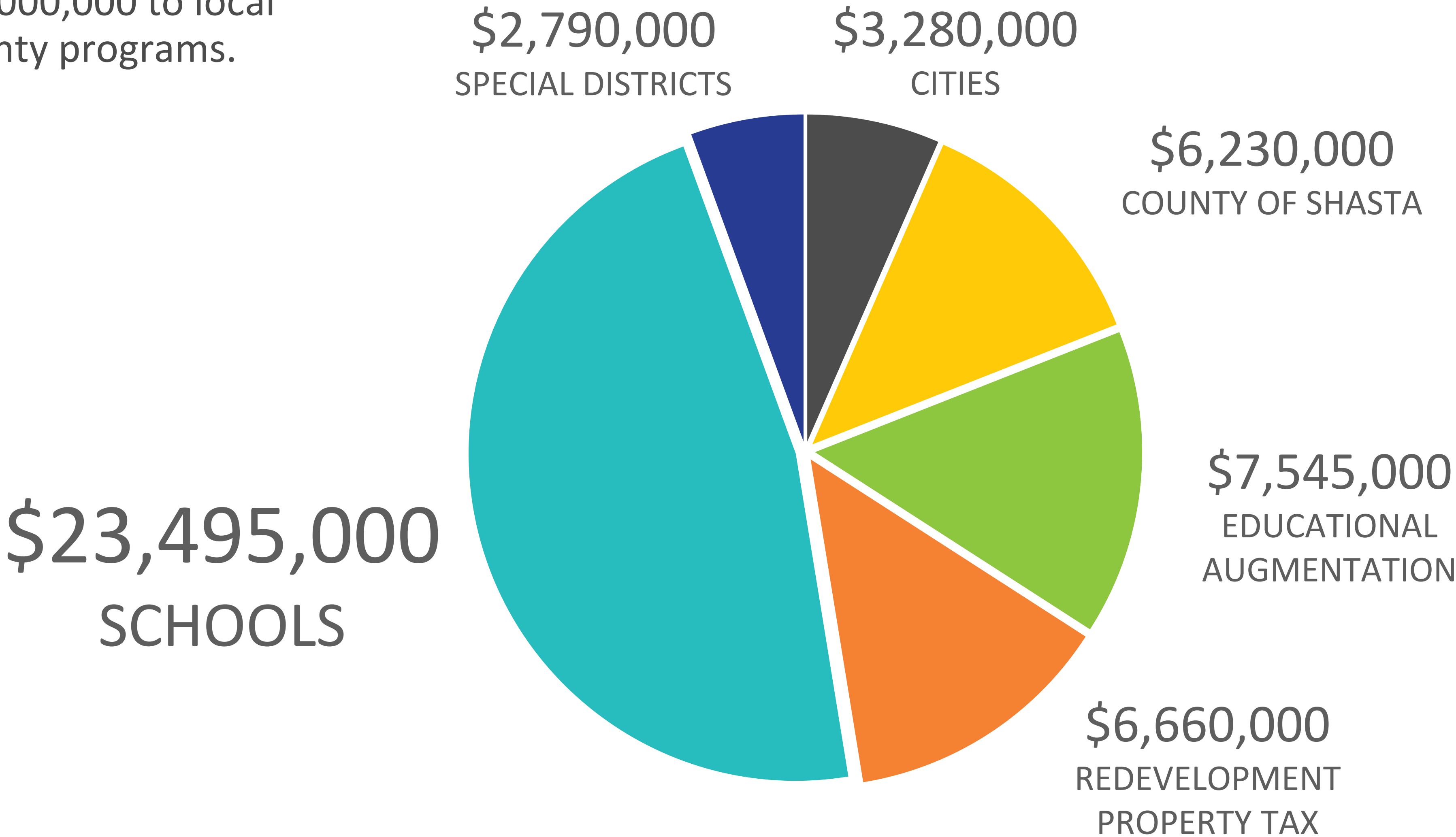
Our experienced team has over 75 years of collective experience, and has developed, built and operated over 10,000 MW of renewable energy projects across the US and Canada.

ConnectGen is backed by Quantum Energy Partners. Founded in 1998, Quantum Energy Partners is a leading provider of private equity capital to the global energy industry, having managed together with its affiliates more than \$17 billion in equity commitments since inception.



\$50 Million Over 30 Years

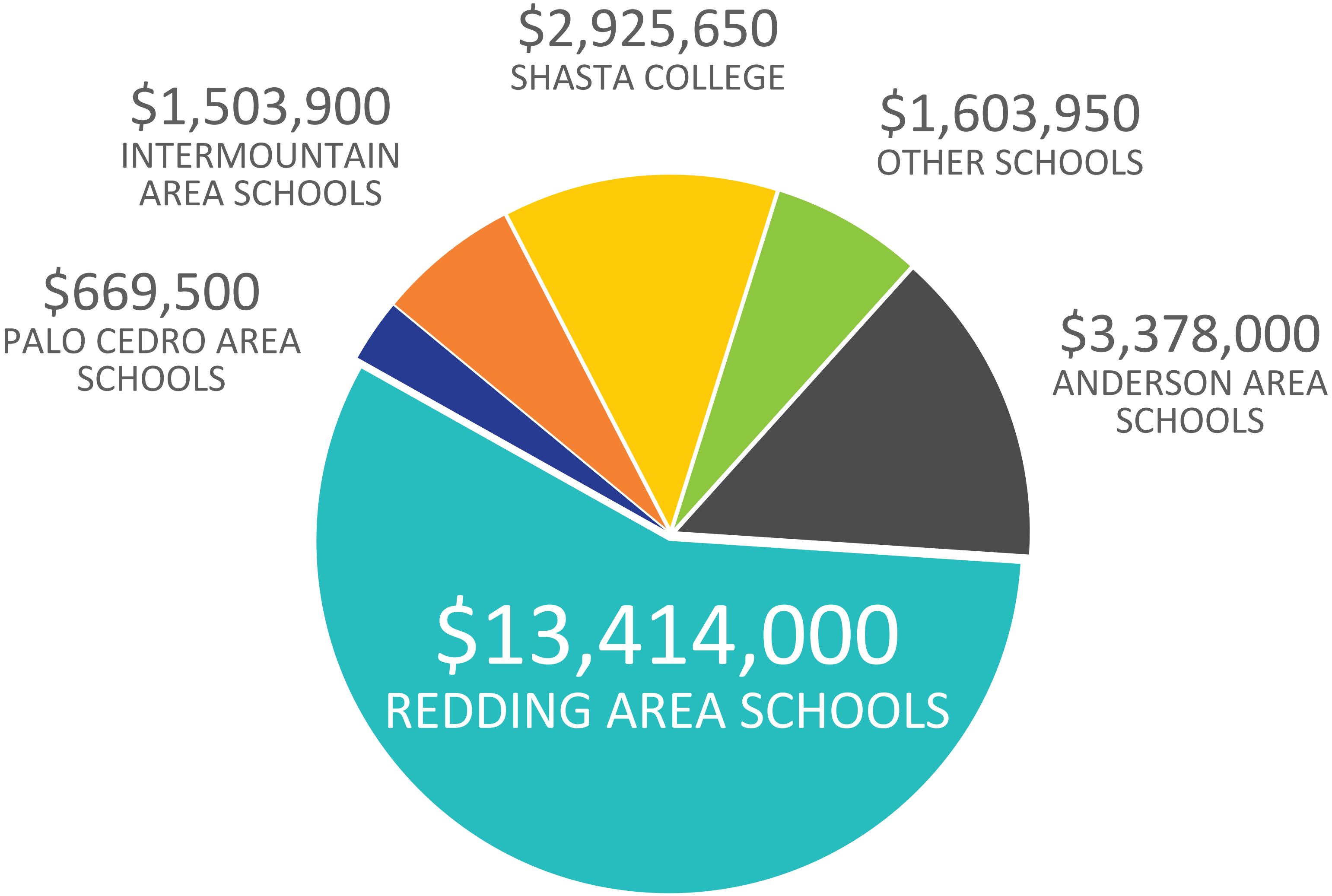
Property tax alone from Fountain
Wind will provide \$50,000,000 to local
schools, cities and county programs.



Millions of Dollars for Local Schools

Nearly 50 percent of the property tax dollars go to supporting local schools.

Allocation to School Districts of the \$23,495,000 over 30 years.





Original Project

Fountain Fire Overlook



Refined Project

Fountain Fire Overlook

Original Project

Montgomery Creek



Refined Project

Montgomery Creek





Original Project

Round Mountain



Refined Project

Round Mountain