

<b>DOCKETED</b>	
<b>Docket Number:</b>	01-AFC-07C
<b>Project Title:</b>	01-AFC-7C Russell City Energy Company
<b>TN #:</b>	246122
<b>Document Title:</b>	Attachment A Photos Figures 17, 25-37 to Investigation Report Calpine Russell City Steam Turbine Event
<b>Description:</b>	***Please See Report TN242911*** Attachment A Photos Figures 17, 25-37 to Investigation Report Calpine Russell City Steam Turbine Event
<b>Filer:</b>	Patricia Carlos
<b>Organization:</b>	California Energy Commission
<b>Submitter Role:</b>	Commission Staff
<b>Submission Date:</b>	9/15/2022 3:27:25 PM
<b>Docketed Date:</b>	9/15/2022



Figure 17. Generator exciter shaft fracture surface.



Figure 25. Borescope image of the HRH 2 manual stop / check valve disk (upper image) and CRV 1 basket (lower image) from the HRH 2 piping.



Figure 26. Borescope image of the CRV 1 basket (upper image) and the HRH 1 manual stop / check valve disk (lower image).

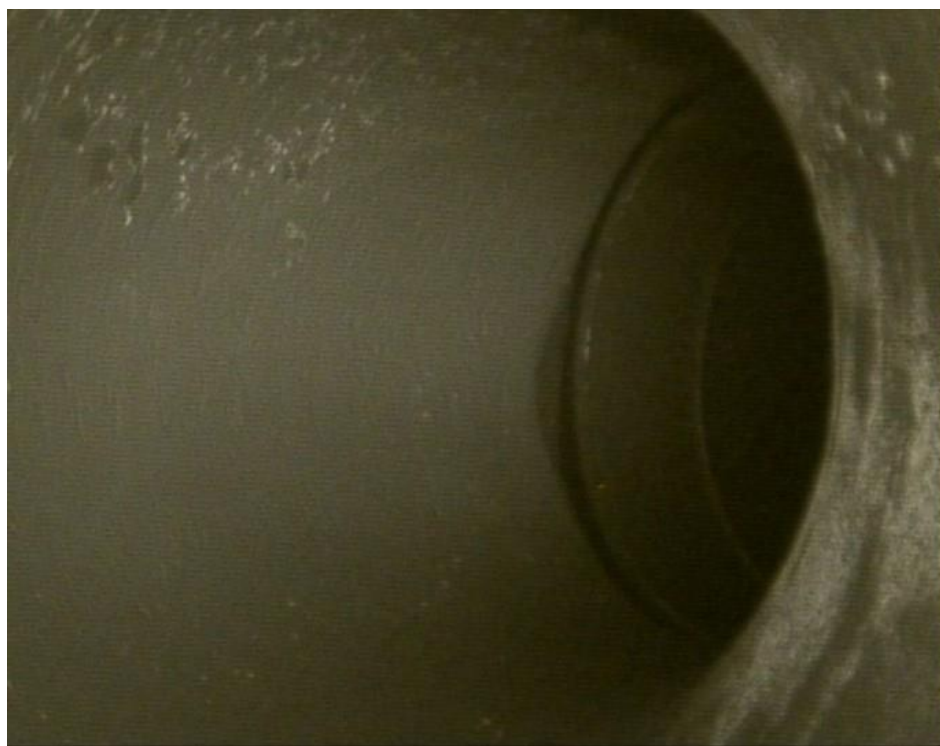


Figure 27. Borescope image of the HRH 1 piping showing oxide exfoliation (upper image) downstream of the manual stop / check valve and the CRV 2 basket (lower image).



Figure 28. Borescope image of the CRV 2 basket showing oxide exfoliation.

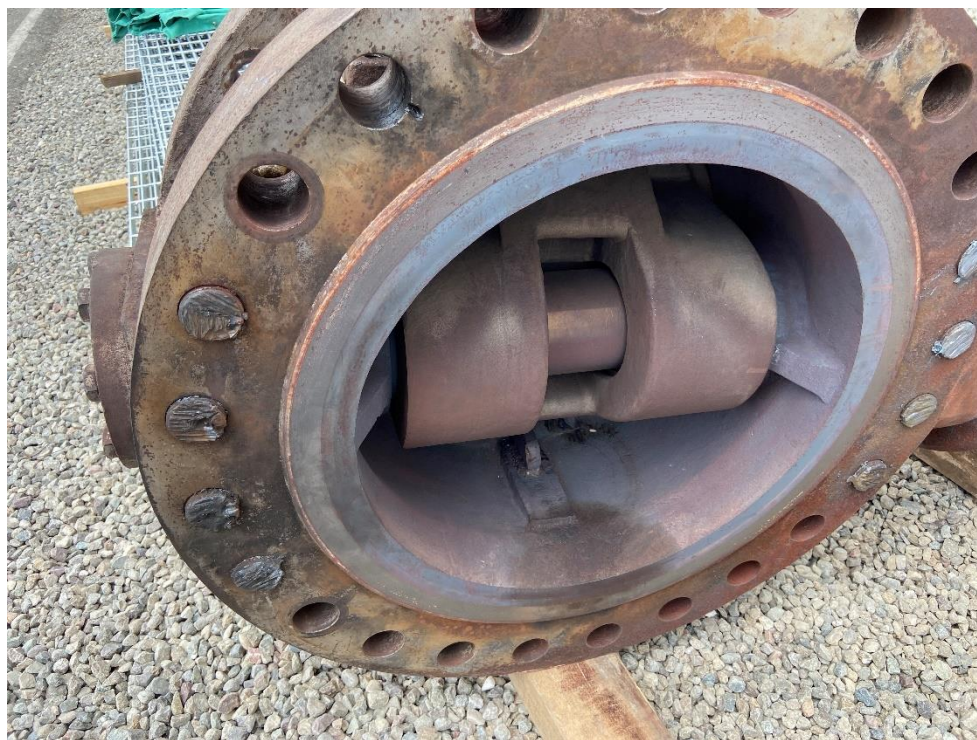


Figure 29. Views of the HRSG 1 CRH stop valve.

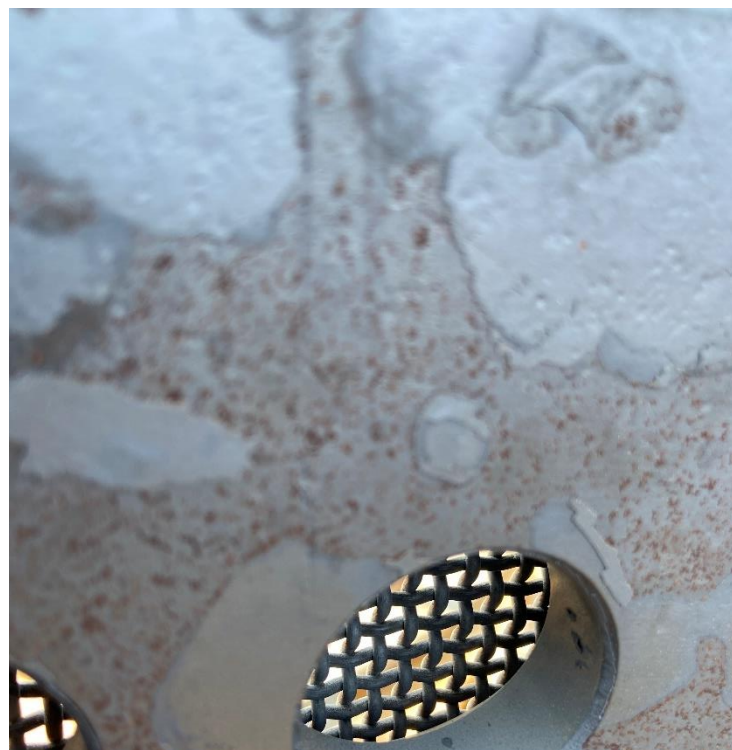


Figure 30. Views of the HRSG 1 CRH stop valve seat area (upper image) and the oxide exfoliation on the CRV 2 basket (lower image).





Figure 31. Views of oxide exfoliation on the CRV 2 basket (upper image) and the CRV 2 intercept valve stem with runout measurements (lower image).



Figure 32. Views of the CRV 2 intercept valve stem with runout measurements and witness marks.



Figure 33. Views of the CRV 2 stop valve bushings (upper image) and stem witness marks (lower image).



Figure 34. View of the CRV 2 stop valve bonnet with oxide exfoliation.



Figure 35. Images from the Bay Valves service center showing the HRSG 1 CRH stop valve (upper image) as received and disassembled gearbox (lower image).



Figure 36. Additional images from the Bay Valves service center showing the disassembled gearbox.

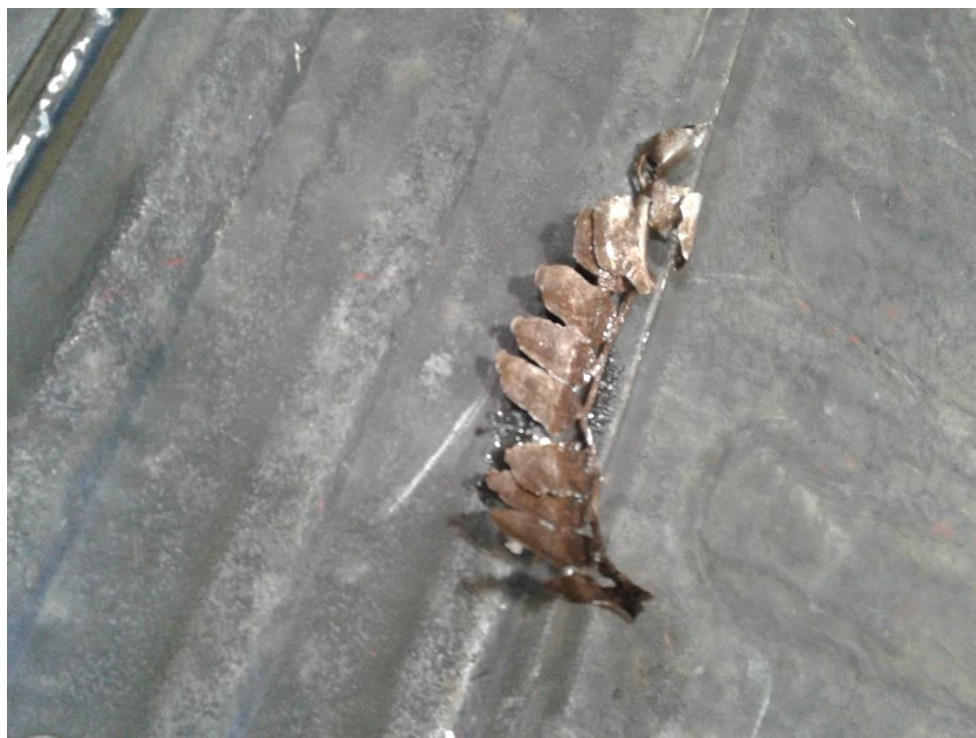


Figure 37. Images from the Bay Valves service center showing the HRSG 1 CRH stop valve damaged gearbox bearing components.