

DOCKETED

| | |
|-------------------------|--|
| Docket Number: | 21-ESR-01 |
| Project Title: | Energy System Reliability |
| TN #: | 244790 |
| Document Title: | Paul Lindsey Comments - Retain Diablo Canyon Power Plant |
| Description: | N/A |
| Filer: | System |
| Organization: | Paul Lindsey |
| Submitter Role: | Public |
| Submission Date: | 8/12/2022 10:01:26 AM |
| Docketed Date: | 8/12/2022 |

*Comment Received From: Paul Lindsey
Submitted On: 8/12/2022
Docket Number: 21-ESR-01*

Retain Diablo Canyon Power Plant

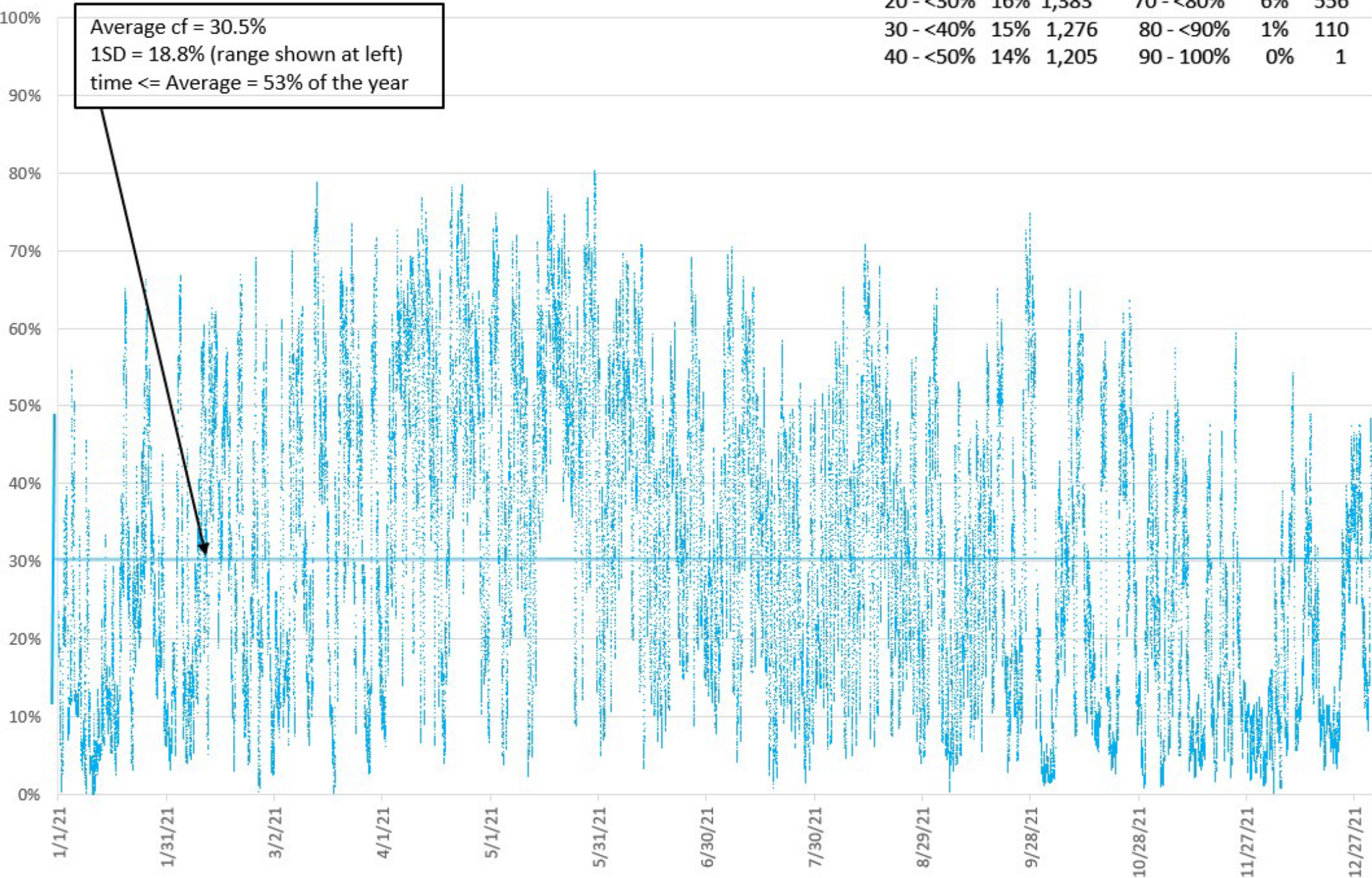
I urge the CA Energy Commission to fully support the continued operation of Diablo Canyon Nuclear Power Plant for as long as the NRC says that it is safe to operate. It generates over 2,000MW of safe, carbon-free electricity that is unaffected by weather, daylight or the supply & cost of natural gas. I have attached charts from publically-available CAISO 2021 data that show the inherent unreliability of wind and solar electricity production. Wind power is completely uncontrollable. Solar is more predictable, but still produces less than 10% of the rated output 55% of the time. These charts include the power that was constrained (not allowed on the grid).

Additional submitted attachment is included below.

California ISO Wind (7,144MW avg capacity) 2021 cf w/ Curtailment included (78.6 GWh, 0.4% of total output)

Time at cf ranges over the year

| | | | | | |
|-----------|-----|-----------|-----------|-----|-----------|
| 0 - <10% | 16% | 1,411 hrs | 50 - <60% | 12% | 1,016 hrs |
| 10 - <20% | 21% | 1,801 | 60 - <70% | 9% | 825 |
| 20 - <30% | 16% | 1,383 | 70 - <80% | 6% | 556 |
| 30 - <40% | 15% | 1,276 | 80 - <90% | 1% | 110 |
| 40 - <50% | 14% | 1,205 | 90 - 100% | 0% | 1 |



Average cf = 30.5%
1SD = 18.8% (range shown at left)
time <= Average = 53% of the year

California ISO Solar (14,406MW average capacity) 2021 cf w/ curtailment added-in (1,426.3 GWh, 4.2% of total output)

Time at cf ranges over the year

| | | | | | |
|-----------|-----|-----------|-----------|-----|---------|
| 0 - <10% | 55% | 4,823 hrs | 50 - <60% | 5% | 435 hrs |
| 10 - <20% | 3% | 246 | 60 - <70% | 7% | 617 |
| 20 - <30% | 3% | 246 | 70 - <80% | 9% | 784 |
| 30 - <40% | 3% | 258 | 80 - <90% | 10% | 838 |
| 40 - <50% | 4% | 319 | 90 - 100% | 2% | 195 |

Average cf = 28.2%
1SD = 34.2% (range shown at left)
time <= Average = 60% of the year

