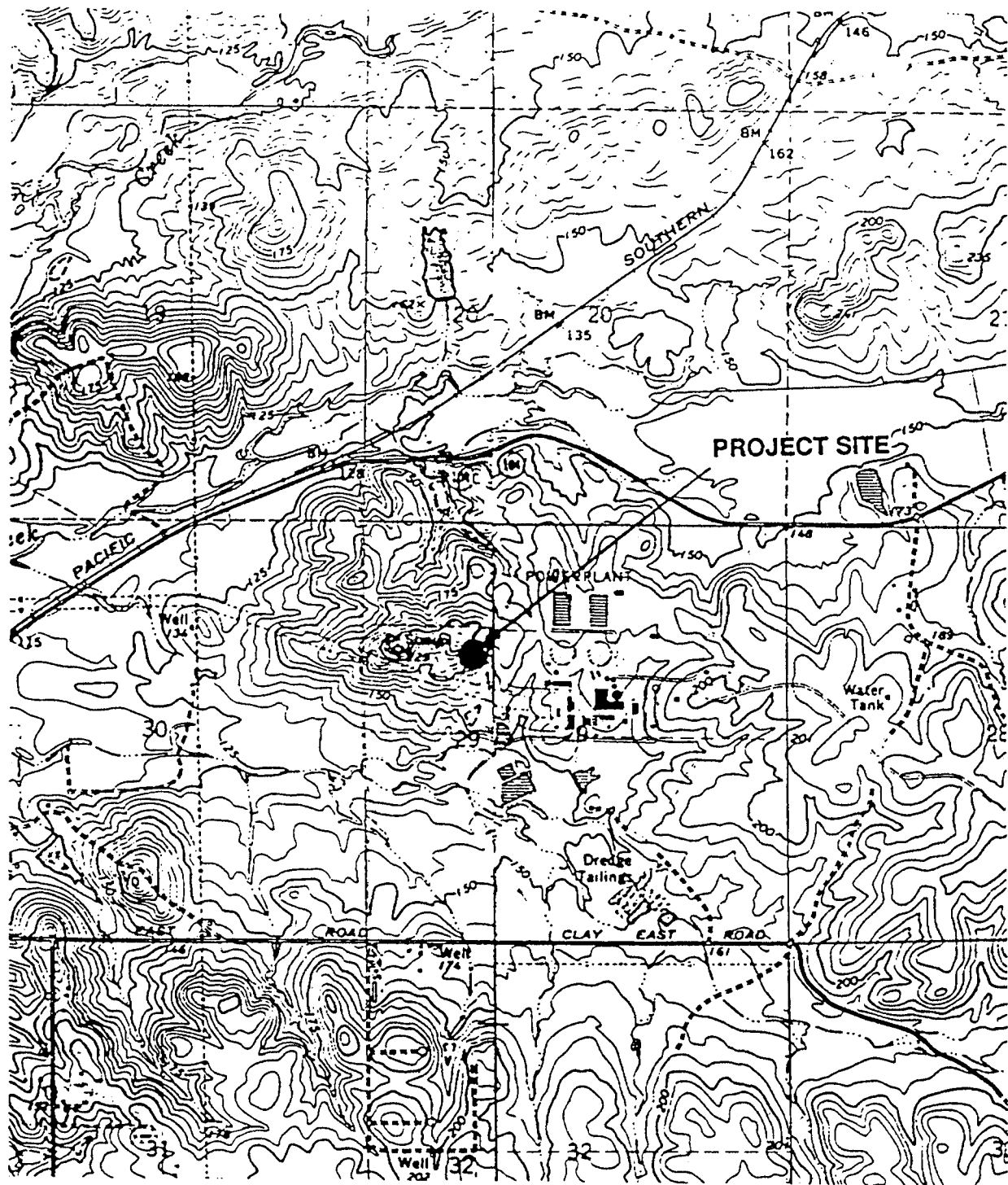


DOCKETED

Docket Number:	01-AFC-19C
Project Title:	SMUD Cosumnes Power Plant - Compliance
TN #:	244288-47
Document Title:	Figures
Description:	N/A
Filer:	Patty Paul
Organization:	Ch2mhill/Carrier
Submitter Role:	Applicant Consultant
Submission Date:	8/1/2022 5:08:59 PM
Docketed Date:	8/1/2022

FIGURES

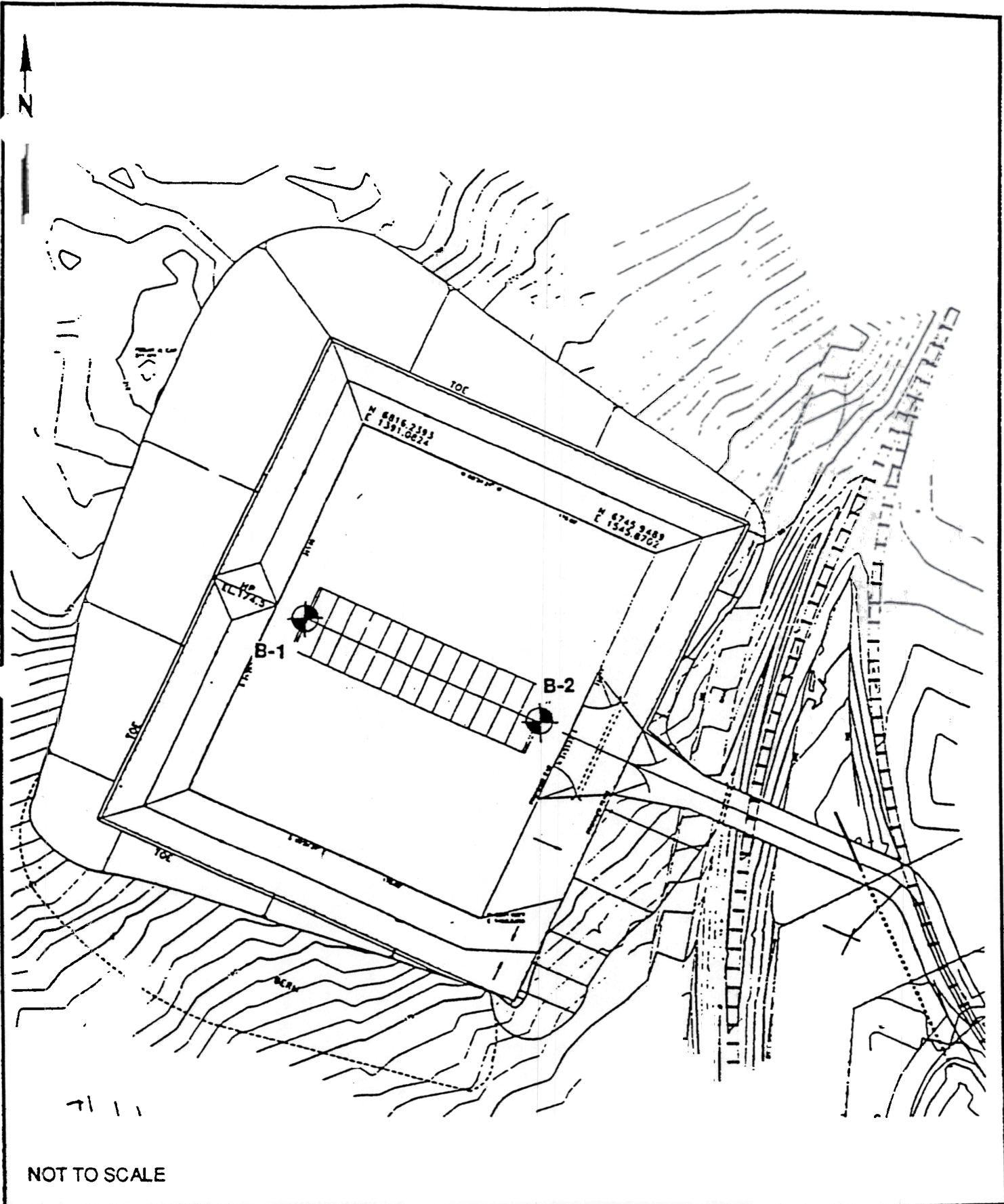


Scale: 1 = 24,000

DATE May 28, 1993
JOB NO. E306-01
DWG NO. E306-01/01
DRAWN J. Phillips
CHKD J. Phillips
APPD J. Hicks

EGC ENVIRONMENTAL GEOTECHNICAL CONSULTANTS, INC.
CONSULTANTS IN APPLIED EARTH SCIENCE
PROJECT SITE LOCATION MAP
Independent Spent Fuel Storage Facility
Sacramento County, California
Sacramento Municipal Utility District

FIGURE NO.
1
REV. NO.



NOT TO SCALE

NOTES Legend: B-1  Boring Location	DATE	May 28, 1993	EGC ENVIRONMENTAL GEOTECHNICAL CONSULTANTS, INC. <small>CONSULTANTS IN APPLIED EARTH SCIENCE</small>	FIGURE NO. 2 <small>REV</small>
	JOB NO.	E306-01		
	DWG NO.	E306-01/02	BORING LOCATION MAP Independent Spent Fuel Storage Facility Sacramento County, California Sacramento Municipal Utility District	
	DRAWN	J. Phillips		
	CHECKED	J. Phillips		
APP'D	J. Hicks			

EXPLORATORY BORING LOG

CLIENT: Sacramento Municipal Utility District
 LOCATION: Rancho Seco Nuclear Generating Station
 Sacramento County, California

JOB NO: E306-01
 DATE: 4/27/93

BORING
 B - 1

DRILL RIG: Mobile B-61
 DRILLER: B&F
 WT. OF HAMMER/DROP: 140 pounds/30 inches

BORING ELEV.: 195 Feet
 BORING DIAM.: 8-inch
 LOGGED BY: JMP

PAGE 1 OF 3

MATERIAL DESCRIPTION AND REMARKS	CONSISTENCY	U S C S	DEPTH (ft.)	S M P L	N blows per ft.	DRY DENSITY (pcf)	WATER CONTENT (%)	PLASTICITY INDEX (%)	UNCONFINED COMPRESSIVE STRENGTH (psf)	
6-inch root zone Sandy SILT, brown, low plasticity, moist	STIFF	ML	1					10.6		
			2							
			3							
			4							
			5							
			6							
			7							
			8							
			9							
			10							
Hard Pan, Cemented Silty SAND, trace gravel, light brown, dry	HARD	SP	11	1	50 5"			9000+		
			12							
Sandy CLAY, trace gravel, brown, low plasticity, dry	STIFF	CL	13							
			14							
			15							
Sandy SILT, trace gravel, brown, low plasticity, dry	HARD	ML	16							
			17							
			18							
			19	2	50 5"	95	14.9			9000+
			20							
SAND, fine to medium, brown, dry	VERY DENSE	SP	21	3	106	92	14.0		9000+	
			22							
			23	4	63	93	7.5			
			24							
			25							
			25	5	62					

ENVIRONMENTAL GEOTECHNICAL
 CONSULTANTS, INC.

SUBSURFACE EXPLORATION LOG B-1
 Rancho Seco Nuclear Generating Station
 Sacramento County, California
 Sacramento Municipal Utility District

FIGURE
 NO.
 3

EXPLORATORY BORING LOG

CLIENT: Sacramento Municipal Utility District LOCATION: Rancho Seco Nuclear Generating Station Sacramento County, California	JOB NO: E306-01 DATE: 4/27/93	B O R I N G B - 1
--	----------------------------------	----------------------

DRILL RIG: Mobile B-61 DRILLER: B&F WT. OF HAMMER/DROP: 140 pounds/30 inches	BORING ELEV.: 195 Feet BORING DIAM.: 8-inch LOGGED BY: JHP	PAGE 2 OF 3
--	--	-------------

MATERIAL DESCRIPTION AND REMARKS	CONSISTENCY	U S C S	DEPTH (ft.)	S M P L	N blows per ft.	DRY DENSITY (pcf)	WATER CONTENT (%)	PLASTICITY INDEX (%)	UNCONFINED COMPRESSIVE STRENGTH (psf)
Gravel at 26.0 feet			26	5	62				
			27						
			28						
SILT, orange brown, low plasticity, dry	HARD	ML	29	6	135				9000+
			30						
			31						
			32						
			33						
			34						
			35						
Gravel layer @ 37.0 feet			36	7	$\frac{25}{1/2''}$				9000+
			37						
			38						
			39						
			40						
			41	8	$\frac{60}{6''}$				9000+
			42						
			43						
			44						
Sandy Gravel, gray, dry	VERY DENSE	GW	45						
			46	9	$\frac{150}{6''}$				
			47						
			48						
SILT, orange brown, low plasticity, dry	HARD	NL	49						
			50	10	$\frac{50}{5''}$				9000+

ENVIRONMENTAL GEOTECHNICAL
CONSULTANTS, INC.

SUBSURFACE EXPLORATION LOG B-1
Rancho Seco Nuclear Generating Station
Sacramento County, California
Sacramento Municipal Utility District

FIGURE
NO.
3

EXPLORATORY BORING LOG

CLIENT: Sacramento Municipal Utility District
 LOCATION: Rancho Seco Nuclear Generating Station
 Sacramento County, California

JOB NO: E306-01
 DATE: 4/27/93

BORING
 B - 1

DRILL RIG: Mobile B-61
 DRILLER: B&F
 WT. OF HAMMER/DROP: 140 pounds/30 inches

BORING ELEV.: 195 Feet
 BORING DIAM.: 8-inch
 LOGGED BY: JMP

PAGE 3 OF 3

MATERIAL DESCRIPTION AND REMARKS	CONSISTENCY	U S C S	DEPTH (ft.)	S M P L	N blows per ft.	DRY DENSITY (pcf)	WATER CONTENT (%)	PLASTICITY INDEX (%)	UNCONFINED COMPRESSIVE STRENGTH (psf)
SILT, orange brown, low plasticity, dry	HARD	ML	51	10	50 5"				9000+
			52						
			53						
			54						
Sandy CLAY, brown, low plasticity, trace gravel, dry	HARD	CL	55		50 5"				9000+
			56	11					
			57						
			58						
			59						
			60						
		CL	61	12	50 6"				9000+
			62						
End of boring @ 62.0 feet. Groundwater not encountered.			63						
			64						
			65						
			66						
			67						
			68						
			69						
			70						
			71						
			72						
			73						
			74						
			75						

Notes: BS = bulk sample

ENVIRONMENTAL GEOTECHNICAL
 CONSULTANTS, INC.

SUBSURFACE EXPLORATION LOG B-1
 Rancho Seco Nuclear Generating Station
 Sacramento County, California
 Sacramento Municipal Utility District

FIGURE
 NO.
 3

EXPLORATORY BORING LOG

CLIENT: Sacramento Municipal Utility District
 LOCATION: Rancho Seco Nuclear Generating Station
 Sacramento County, California

JOB NO: E306-01
 DATE: 4/27/93

BORING
 B - 2

DRILL RIG: Mobile B-61
 DRILLER: B&F
 WT. OF HAMMER/DROP: 140 pounds/30 inches

BORING ELEV.: 183 Feet
 BORING DIAM.: 8-inch
 LOGGED BY: JMP

PAGE 1 OF 3

MATERIAL DESCRIPTION AND REMARKS	CONSISTENCY	U S C S	DEPTH (ft.)	S M P L	N blows per ft.	DRY DENSITY (pcf)	WATER CONTENT (%)	PLASTICITY INDEX (%)	UNCONFINED COMPRESSIVE STRENGTH (psf)
6-inch root zone Sandy CLAY, brown, low plasticity, moist	STIFF	CL	1						3000
			2						
			3						
			4						
			5						
			6	1	16				
SAND, grayish brown, wet	MED DENSE	SP	7						
			8						
			9						
Sandy SILT, orange brown, low plasticity, dry	HARD	ML	10						
			11	2	25				
			12						
			13	3	$\frac{100}{5''}$	87	17.9	9000+	
			14						
			15						
			16	4	68	77	12.2	9000+	
			17						
			18						
			19	5	57	81	16.8		
Sandy GRAVEL, grayish brown, slightly moist	VERY DENSE	GW	20						
			21						
			22						
			23						
			24						
			25	6	$\frac{50}{4''}$				

ENVIRONMENTAL GEOTECHNICAL
 CONSULTANTS, INC.

SUBSURFACE EXPLORATION LOG B-2
 Rancho Seco Nuclear Generating Station
 Sacramento County, California
 Sacramento Municipal Utility District

FIGURE
 NO.
 4

EXPLORATORY BORING LOG

CLIENT: Sacramento Municipal Utility District
 LOCATION: Rancho Seco Nuclear Generating Station
 Sacramento County, California

JOB NO: E306-01
 DATE: 4/27/93

BORING
 B - 2

DRILL RIG: Mobile B-61
 DRILLER: B&F
 WT. OF HAMMER/DROP: 140 pounds/30 inches

BORING ELEV.: 183 Feet
 BORING DIAM.: 8-inch
 LOGGED BY: JMP

PAGE 2 OF 3

MATERIAL DESCRIPTION AND REMARKS	CONSISTENCY	U S C S	DEPTH (ft.)	S M P L	N blows per ft.	DRY DENSITY (pcf)	WATER CONTENT (%)	PLASTICITY INDEX (%)	UNCONFINED COMPRESSIVE STRENGTH (psf)
Sandy GRAVEL, grayish brown, slightly moist	VERY DENSE	GW	26	6	50 4"				
			27						
			28						
			29						
			30						
			31	7	50 4"				
			32						
			33						
			34						
			35						
Sandy SILT, orange brown, low plasticity, slightly moist	HARD	ML	36	8	50 4"				9000+
			37						
			38						
			39						
			40						
			41	9	50 5"				9000+
			42						
			43						
			44						
			45						
Light brown below @ 40 feet			46	10	50 6"				9000+
			47						
			48						
			49						
			50						
				11	50 5"				9000+

ENVIRONMENTAL GEOTECHNICAL
 CONSULTANTS, INC.

SUBSURFACE EXPLORATION LOG B-2
 Rancho Seco Nuclear Generating Station
 Sacramento County, California
 Sacramento Municipal Utility District

GURE
 N O.
 4

EXPLORATORY BORING LOG

CLIENT: Sacramento Municipal Utility District LOCATION: Rancho Seco Nuclear Generating Station Sacramento County, California	JOB NO: E306-01 DATE: 4/27/93	BORING B - 2
--	----------------------------------	-----------------

DRILL RIG: Mobile B-61 DRILLER: B&F WT. OF HAMMER/DROP: 140 pounds/30 inches	BORING ELEV.: 183 Feet BORING DIAM.: 8-inch LOGGED BY: JHP	PAGE 3 OF 3
--	--	-------------

MATERIAL DESCRIPTION AND REMARKS	CONSISTENCY	U S C S	DEPTH (ft.)	S M P L	N blows per ft.	DRY DENSITY (pcf)	WATER CONTENT (%)	PLASTICITY INDEX (%)	UNCONFINED COMPRESSIVE STRENGTH (psf)
Sandy SILT, orange brown, low plasticity, slightly moist	HARD	ML	51	11	$\frac{50}{5^H}$				9000+
Silty SAND, brown, dry	VERY DENSE	SM	52						
			53						
			54						
			55						
			56	12	62				
			57						
			58						
			59						
			60						
			61						
SILT, brown, low plasticity, dry	HARD	ML	62						
			63						
			64						
			65						
			66	13	80				
			67						
			68						
			69						
			70						
			71						
End of boring @ 75 feet. Groundwater not encountered.			72						
			73						
			74						
			75	14	$\frac{50}{5^H}$				

ENVIRONMENTAL GEOTECHNICAL
CONSULTANTS, INC.

SUBSURFACE EXPLORATION LOG B-2
 Rancho Seco Nuclear Generating Station
 Sacramento County, California
 Sacramento Municipal Utility District

FIGURE
NO.
4