

<b>DOCKETED</b>	
<b>Docket Number:</b>	01-AFC-19C
<b>Project Title:</b>	SMUD Cosumnes Power Plant - Compliance
<b>TN #:</b>	244288-37
<b>Document Title:</b>	Noise Monitoring Results - Appendix 8_5A
<b>Description:</b>	N/A
<b>Filer:</b>	Patty Paul
<b>Organization:</b>	Ch2mhill/Carrier
<b>Submitter Role:</b>	Applicant Consultant
<b>Submission Date:</b>	8/1/2022 5:08:59 PM
<b>Docketed Date:</b>	8/1/2022

APPENDIX 8.5A

# Noise Monitoring Results

---

**TABLE 8.5A-1**  
Hourly Values at M1

Date	Time	Leq (hr)	L10 (hr)	L90 (hr)
5/23/2001	7:01 PM	45	42	30
5/23/2001	8:01 PM	43	46	34
5/23/2001	9:01 PM	60	64	52
5/23/2001	10:01 PM	53	56	36
5/23/2001	11:01 PM	43	46	33
5/23/2001	12:01 AM	47	50	41
5/24/2001	1:01 AM	44	48	34
5/24/2001	2:01 AM	49	52	45
5/24/2001	3:01 AM	50	53	44
5/24/2001	4:01 AM	46	50	39
5/24/2001	5:01 AM	46	50	38
5/24/2001	6:01 AM	52	54	41
5/24/2001	7:01 AM	47	50	37
5/24/2001	8:01 AM	53	50	33
5/24/2001	9:01 AM	49	49	37
5/24/2001	10:01 AM	50	44	31
5/24/2001	11:01 AM	56	47	36
5/24/2001	12:01 PM	50	48	32
5/24/2001	1:01 PM	52	50	31
5/24/2001	2:01 PM	48	44	32
5/24/2001	3:01 PM	51	43	32
5/24/2001	4:01 PM	52	44	31
5/24/2001	5:01 PM	52	47	34
5/24/2001	6:01 PM	47	46	33
5/24/2001	7:01 PM	50	51	35
5/24/2001	8:01 PM	41	44	33
5/24/2001	9:01 PM	52	52	36
5/24/2001	10:01 PM	51	40	31
5/24/2001	11:01 PM	38	40	34
5/24/2001	12:01 AM	39	42	35
5/25/2001	1:01 AM	41	44	28
5/25/2001	2:01 AM	47	50	37
5/25/2001	3:01 AM	43	46	37
5/25/2001	4:01 AM	37	38	29
5/25/2001	5:01 AM	47	51	37
5/25/2001	6:01 AM	52	55	41
5/25/2001	7:01 AM	49	49	41

**TABLE 8.5A-2**  
10-minute Measurements at CPP M1 (dBA)

Time	L <sub>eq</sub>	L <sub>10</sub>	L <sub>90</sub>
18:01	38.1	41.5	31.5
18:11	52.4	44.5	32
18:21	39.7	43	31
18:31	37.6	41	30
18:41	35.9	39	29
18:51	33.3	35	28
19:01	40.5	44	31.5
19:11	37.6	40.5	30.5
19:21	38.8	42.5	28.5
19:31	44	43.5	31
19:41	42.1	46	31.5
19:51	45.7	49	34.5
20:01	44.1	46.5	39
20:11	46.2	48	43
20:21	47.8	49	45.5
20:31	59	65.5	39
20:41	63.6	68.5	44
20:51	62.4	64	57.5
21:01	59.5	62.5	54.5
21:11	60	63.5	40.5
21:21	51.3	54.5	34.5
21:31	38.6	42	31.5
21:41	39.4	42.5	32.5
21:51	46.6	41	35
22:01	38.1	40.5	35.5
22:11	39.6	40.5	36
22:21	35.6	38.5	28
22:31	41.7	36.5	28
22:41	40.6	44	34.5
22:51	40.9	44	33.5
23:01	47.5	52	32.5
23:11	46	51	34.5
23:21	41.4	45.5	30.5
23:31	39.1	42	30.5
23:41	47.8	50.5	40.5
23:51	50.5	52.5	45.5
0:01	49.5	51.5	43
0:11	45.9	49.5	29
0:21	31.4	34	28
0:31	28.8	29.5	27
0:41	30.9	31	28.5
0:51	35	38	30
1:01	50	54.5	40.5
1:11	44.5	46.5	38.5
1:21	46.1	48	39.5
1:31	49.3	51.5	44

**TABLE 8.5A-2**  
10-minute Measurements at CPP M1 (dBA)

Time	L <sub>eq</sub>	L <sub>10</sub>	L <sub>90</sub>
1:41	44.3	47	30.5
1:51	52.5	56	45
2:01	52.4	54.5	50
2:11	50.6	52	47
2:21	52.4	54.5	48
2:31	49.9	53	30.5
2:41	47.7	52	27.5
2:51	50.2	53	44.5
3:01	46.8	50.5	39
3:11	48	50	38
3:21	46.6	49	39.5
3:31	49	52	43.5
3:41	39.4	43	25.5
3:51	47	51.5	39.5
4:01	42.2	46	35
4:11	35.6	37.5	32.5
4:21	39.6	42	34.5
4:31	44.7	48.5	31.5
4:41	49.3	54	39.5
4:51	49.1	53	40.5
5:01	45.9	48.5	40.5
5:11	48.3	50.5	42
5:21	56.5	54	38
5:31	55.7	59.5	46.5
5:41	45.3	49	37
5:51	44.1	48.5	35.5
6:01	42.5	45	37.5
6:11	44.1	48	37.5
6:21	46.2	48.5	37
6:31	51.7	52	37.5
6:41	46.8	51	37
6:51	46.6	49	35.5
7:01	44.5	48	34
7:11	45.9	48.5	34
7:21	56	48	32
7:31	48.2	52	32.5
7:41	49	53.5	35
7:51	53.3	45	31
8:01	56.9	47.5	33
8:11	43.3	46	37
8:21	54.5	50	39.5
8:31	46.5	50	39
8:41	42.6	46	34.5
8:51	47.1	51	34.5
9:01	49.2	45	33.5
9:11	42.4	44.5	32.5
9:21	41.7	45.5	31.5
9:31	39.8	42.5	31.5

**TABLE 8.5A-2**  
10-minute Measurements at CPP M1 (dBA)

Time	L <sub>eq</sub>	L <sub>10</sub>	L <sub>90</sub>
9:41	53.6	46.5	31.5
9:51	55.7	37.5	28.5
10:01	42.9	45.5	29
10:11	44.9	48.5	30.5
10:21	56.8	49.5	33.5
10:31	45.4	47	38.5
10:41	44.4	47	39.5
10:51	61.1	44	31
11:01	54.9	41.5	30
11:11	48.6	43	28.5
11:21	39.4	41.5	28.5
11:31	41.9	46	33
11:41	52.7	51	29.5
11:51	46.5	51	35.5
12:01	54.3	43	30.5
12:11	54.4	56.5	31.5
12:21	50.5	44	30.5
12:31	46.7	47.5	30.5
12:41	37.8	41	30
12:51	56.1	45.5	32
13:01	36.4	39	31
13:11	43	42.5	32
13:21	39.5	42.5	33
13:31	54.2	48	32
13:41	41.4	45	33.5
13:51	35.9	38.5	31.5
14:01	46.7	45	32
14:11	37.7	40	31.5
14:21	37.5	40.5	32
14:31	52	46	34.5
14:41	53.6	37.5	29.5
14:51	54.6	42.5	31.5
15:01	41.4	45	30.5
15:11	36.3	39	31
15:21	56.6	47.5	33
15:31	51.4	48	31.5
15:41	45	39.5	30
15:51	38.5	41	31.5
16:01	53.5	42.5	31
16:11	49.8	45.5	31
16:21	47	50	32.5
16:31	43.1	45.5	34
16:41	42.2	45.5	33
16:51	45.3	44.5	35
17:01	58.5	48	35
17:11	41.4	44	35
17:21	41.8	44	33
17:31	39.5	42.5	33

**TABLE 8.5A-2**  
10-minute Measurements at CPP M1 (dBA)

Time	L <sub>eq</sub>	L <sub>10</sub>	L <sub>90</sub>
17:41	38.7	42	31.5
17:51	45.6	49.5	33
18:01	53	49.5	32.5
18:11	40.9	44.5	33
18:21	40.4	43.5	30.5
18:31	54.5	45.5	31.5
18:41	36.2	39	28.5
18:51	49.1	53.5	37.5
19:01	52.7	56.5	38
19:11	37.7	41.5	30
19:21	36.6	39.5	30.5
19:31	40.1	43	32.5
19:41	37.7	41.5	29
19:51	38.3	40.5	31.5
20:01	46.7	50	37
20:11	49.4	52.5	38.5
20:21	52.2	56	36.5
20:31	51.3	54.5	38
20:41	50.3	48.5	34.5
20:51	40	42.5	30.5
21:01	55.9	46.5	30
21:11	38.4	42	29.5
21:21	34.3	36.5	28.5
21:31	40.1	44	30
21:41	58.3	40.5	31.5
21:51	35.3	37.5	30
22:01	35.4	37	32.5
22:11	36.4	38	32.5
22:21	38.8	40.5	36
22:31	41.9	44	38
22:41	38.5	42	31.5
22:51	31.5	32.5	28.5
23:01	33.1	34.5	30.5
23:11	36.1	38.5	31.5
23:21	35.1	37.5	30.5
23:31	32.5	36.5	26.5
23:41	36.4	39.5	29
23:51	42.7	45	38.5
0:01	43.2	46	38.5
0:11	37.5	41.5	25.5
0:21	42.9	46.5	27
0:31	40.4	43	30.5
0:41	36.7	40.5	26
0:51	37.8	37.5	26.5
1:01	43.3	46	27.5
1:11	50	53.5	42
1:21	49.8	53.5	34
1:31	42.3	45.5	28.5

**TABLE 8.5A-2**  
 10-minute Measurements at CPP M1 (dBA)

Time	L <sub>eq</sub>	L <sub>10</sub>	L <sub>90</sub>
1:41	45.7	48.5	38
1:51	41.6	45.5	32.5
2:01	36.6	38.5	32.5
2:11	44.3	47.5	39
2:21	44.4	45.5	39
2:31	45.1	47.5	37.5
2:41	41.1	44	34.5
2:51	42.4	45.5	33.5
3:01	34.1	37	28
3:11	37.1	40	30.5
3:21	36.2	39.5	31
3:31	34.2	36.5	29
3:41	34.9	36	27.5
3:51	34.7	35.5	29
4:01	40.7	39.5	27
4:11	44.8	47	27.5
4:21	47.8	53	35.5
4:31	44.6	45	39.5
4:41	48	53	34
4:51	46.5	49	39
5:01	49.7	51.5	38.5
5:11	48.4	51.5	42
5:21	53.8	58	45.5
5:31	54.8	58.5	41
5:41	47.2	50.5	35
5:51	51.6	54.5	37.5
6:01	48.2	50.5	39
6:11	47.9	51.5	41
6:21	50.4	51.5	45
6:31	46.5	49	42.5
6:41	45.1	48.5	40
6:51	46.2	48.5	39
7:01	52.3	44.5	35
7:11	41.6	45	35.5
7:21	55.6	52	35.5
7:31	55.3	50.5	35.5
7:41	43.7	45.5	37.5
7:51	41.5	45	35



Figure 8.5A-1: 10-Minute Values at CPP Location M1

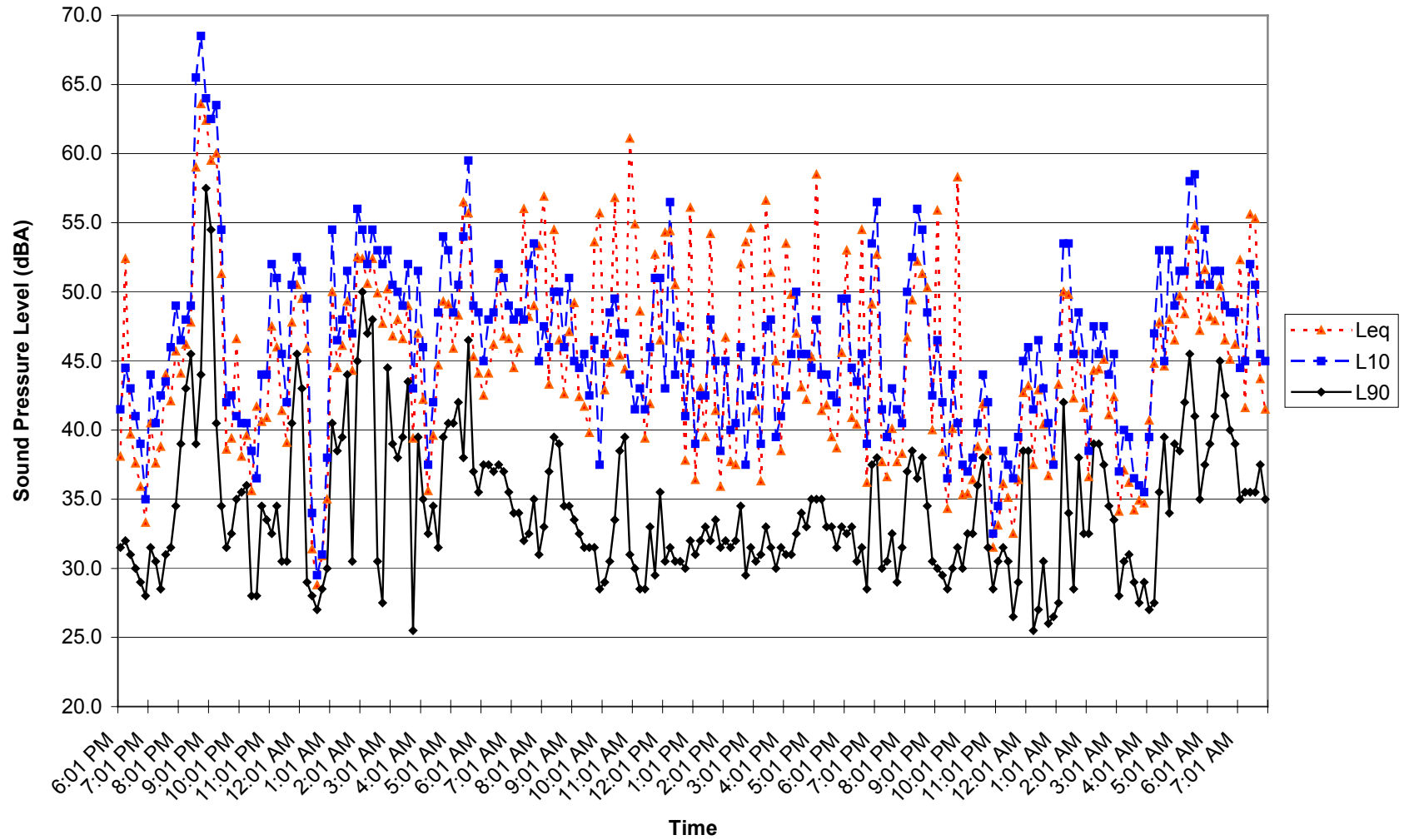


Figure 8.5A-2: Hourly Values at CPP M1

