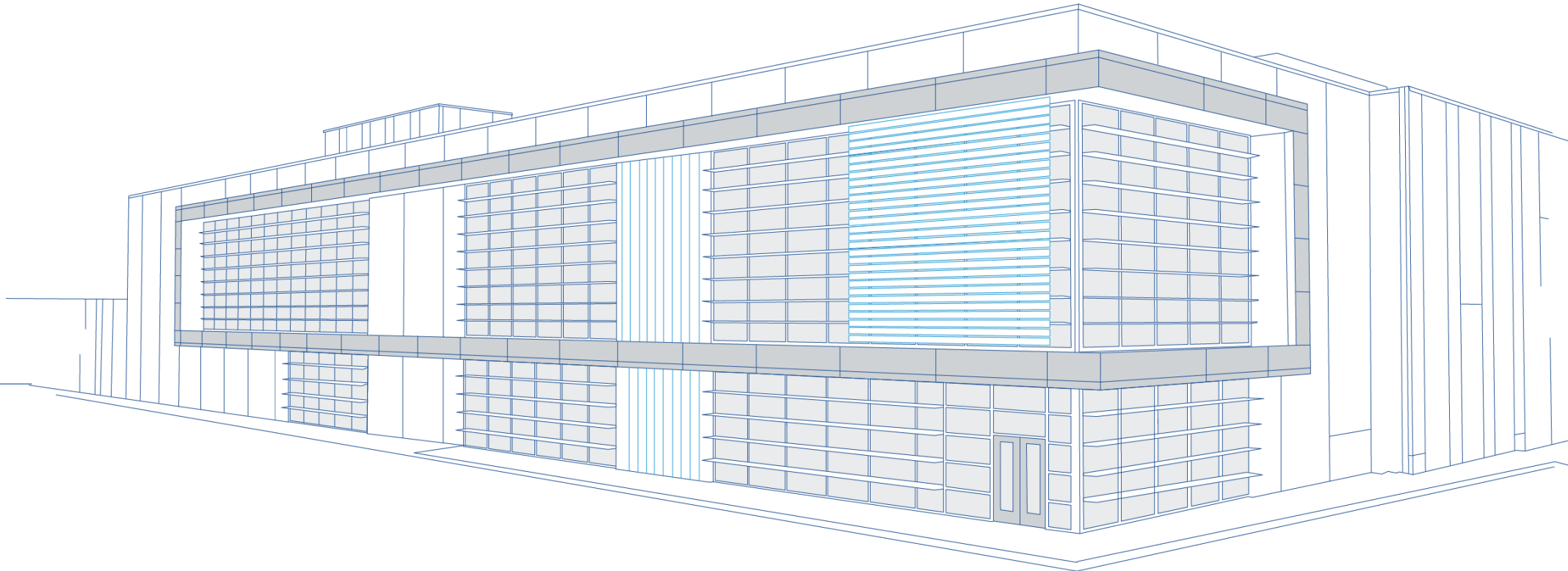


DOCKETED

Docket Number:	21-SPPE-02
Project Title:	STACK Trade Zone Park
TN #:	244283
Document Title:	Presentation - STACK TZP Project Overview
Description:	N/A
Filer:	Scott Galati
Organization:	DayZenLLC
Submitter Role:	Applicant Representative
Submission Date:	8/1/2022 3:20:08 PM
Docketed Date:	8/1/2022

CEC DISCUSSION MATERIALS

AUGUST 2022



STACK'S FOOTPRINT



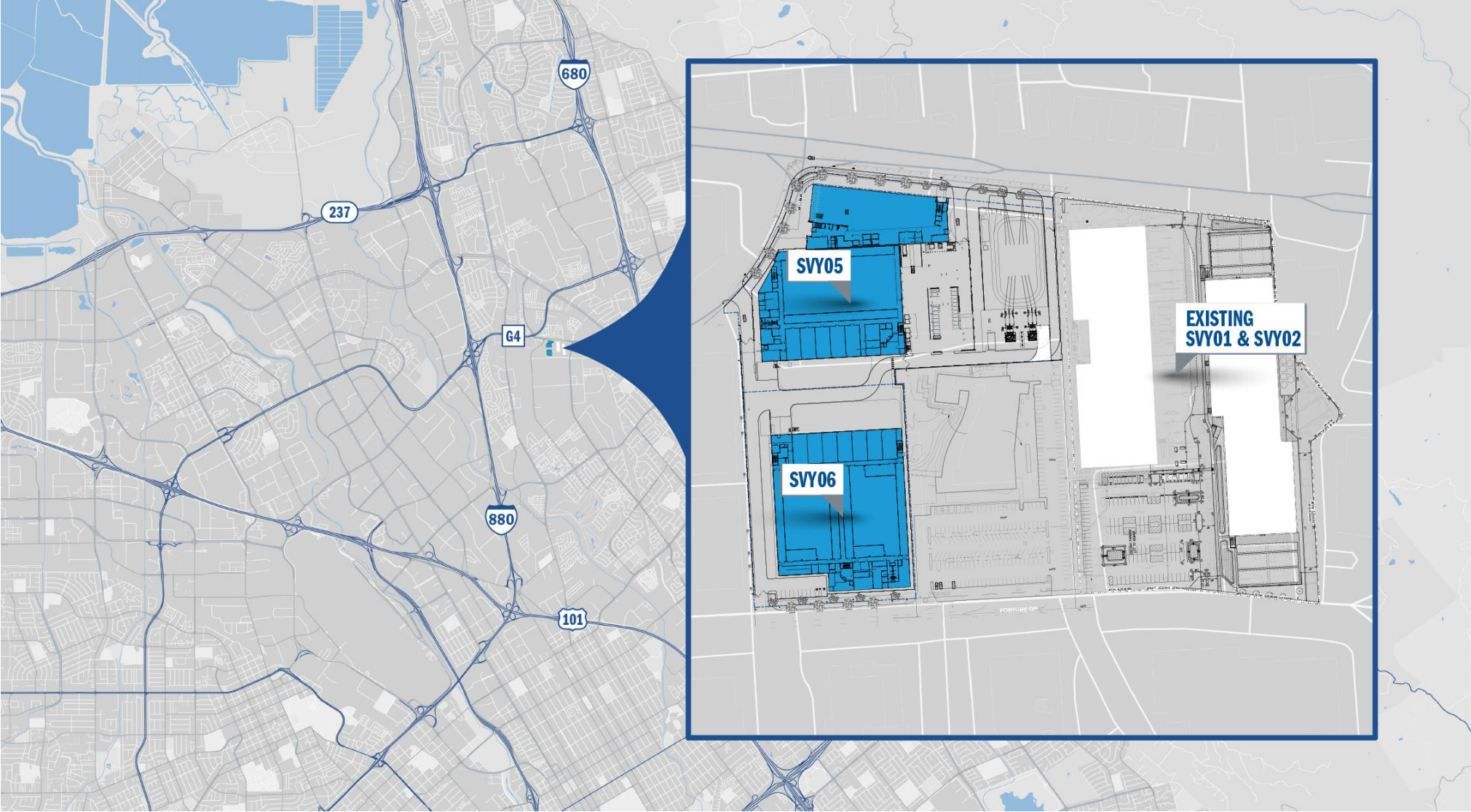
IN-SERVICE DATA CENTERS
28

BUILT CAPACITY
414_{MW}

UNDER CONSTRUCTION
321_{MW}

FUTURE DEVELOPMENT POTENTIAL
1.83+_{GW}

SITE OVERVIEW



EXISTING CONDITIONS



PROJECT RENDERINGS



PROJECT DESCRIPTION

OVERVIEW

Redevelopment of **9.78-acre** site consisting of two new, three-story data center buildings; one three-story advanced manufacturing building; onsite substation; and a multi-story parking garage

LOCATION

2400 Ringwood RD & 1849 Fortune Drive, San Jose, CA

BOUNDARY

Trade Zone Blvd to the north; Ringwood Rd to the west; STACK's SVY01 facility to the east; and Fortune Drive to the South

ACREAGE

+/- 9.78

EXISTING IMPROVEMENTS

- Blighted single-story manufacturing building & associated parking
- Single-story office building & associated parking

PROPOSED IMPROVEMENTS

527,000 SF of new Data Center development and **135,000 SF**

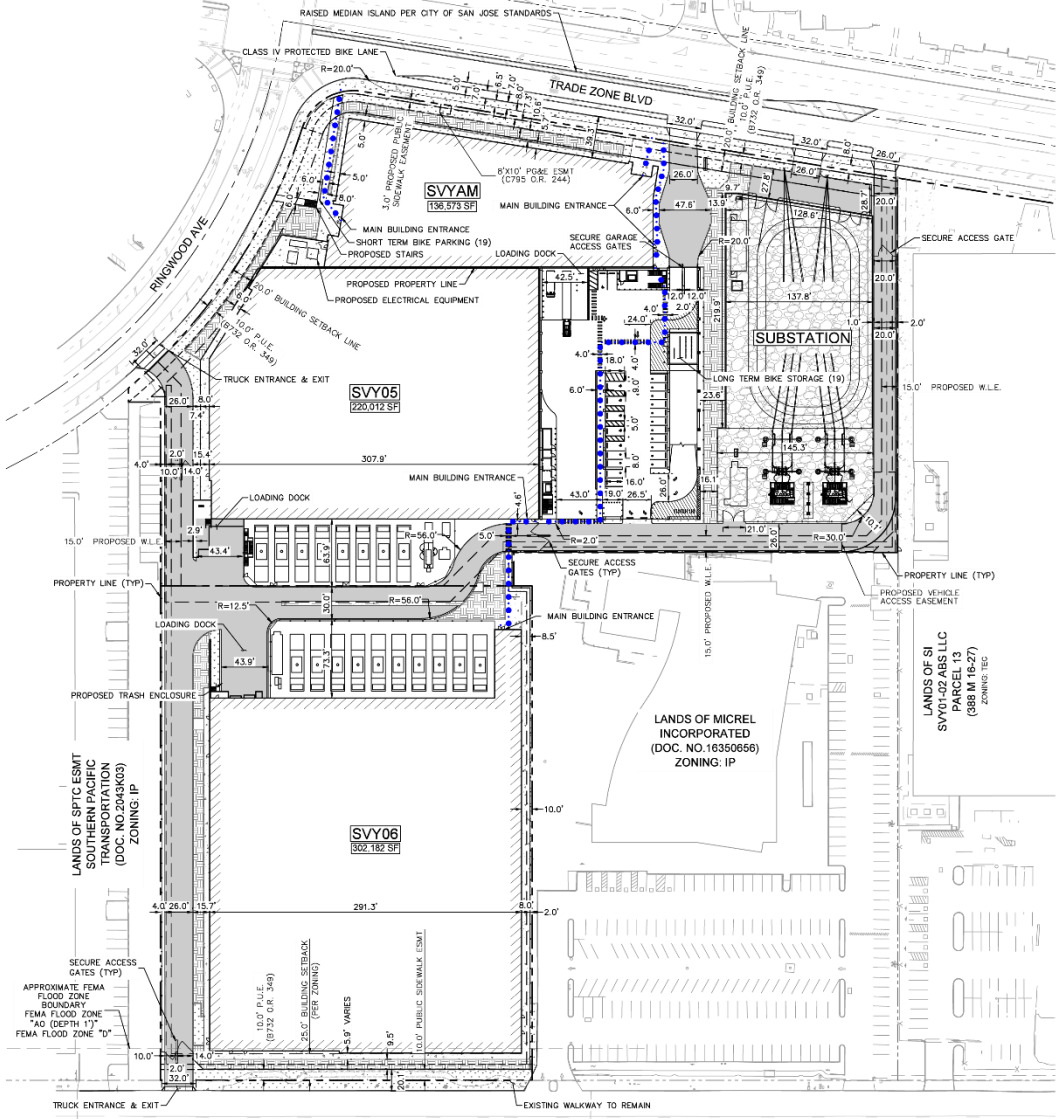
Advanced Manufacturing:

- Multi-story parking garage
- **24MW** data center building (SVY05)
- **36MW** data center building (SVY06)
- Three-story advanced manufacturing building
- Onsite substation
- Backup generating facility

BACKUP GENERATING FACILITY

- Thirty-six **(36) 3MW** backup critical generators & two **(2) 1MW** backup house generators located in the exterior yard between the two buildings
- The backup generating facility will only be operated for maintenance, testing and emergency utility power outages
- The primary objective of the backup generating facility will be to provide sufficient power to servers housed in the data center buildings during a power outage
- Primary fuel source will be renewable diesel fuels [as practicable]

PROJECT SITE PLAN



STACK TRADE ZONE PARK ENVIRONMENTAL BENEFITS:

- Air Cooled Chillers
 - Low Global Warming Potential (GWP) Refrigerant R513a
- Multi-modal access plan for the site
 - Bike Paths
 - Pedestrian walkways tied into the existing sidewalk access points from BART
 - Additional Bike Racks/Storage
- Renewable Diesel Fuel [as practicable]
- Tier-4 Standby Generators
- Redeveloping a blighted site
- LEED Silver Certification
- STACK's 100% renewable position and objectives
- Advanced Manufacturing Building to support City of SJ initiatives



STACK's *OnePurpose* program encompasses everything we do for people, planet, and progress.

RENEWABLE ENERGY

To tackle climate change, we're focused on shifting to 100% renewables across our portfolio and building resilience to climate uncertainty by innovating on new operating models and sourcing responsibly.

RESOURCE EFFICIENCY

To protect our water supply, STACK is focused on using water more efficiently. Our Basis of Design offers 1.3 PUE or better and leverages air for cooling instead of water wherever possible to conserve and reduce.

SUSTAINABLE SOURCING

To reduce our carbon footprint at the facility level and upstream, STACK is working with all our suppliers to reduce waste and emissions.

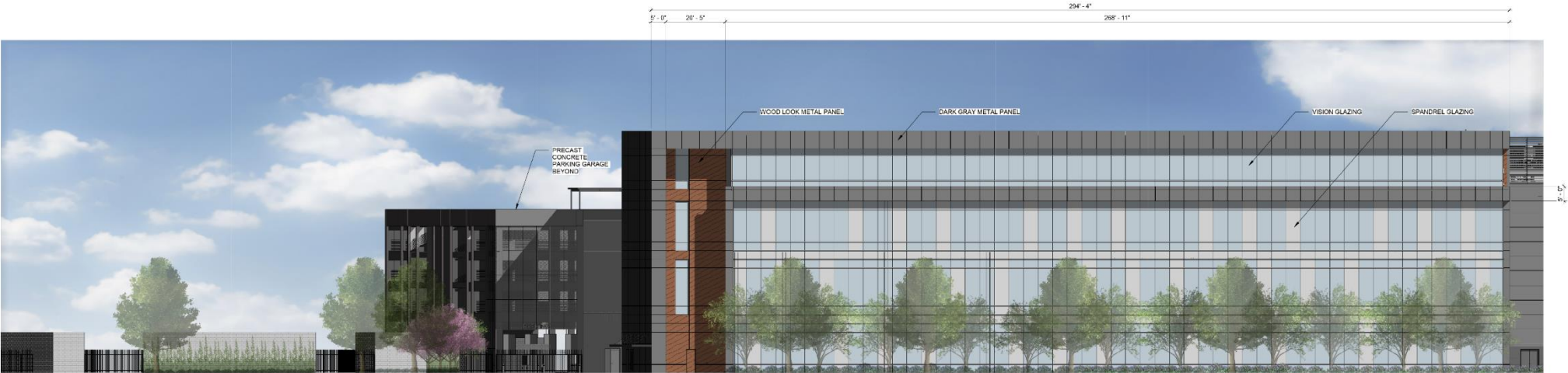


E STACK
INFRASTRUCTURE

APPENDIX

DATA CENTER ELEVATIONS

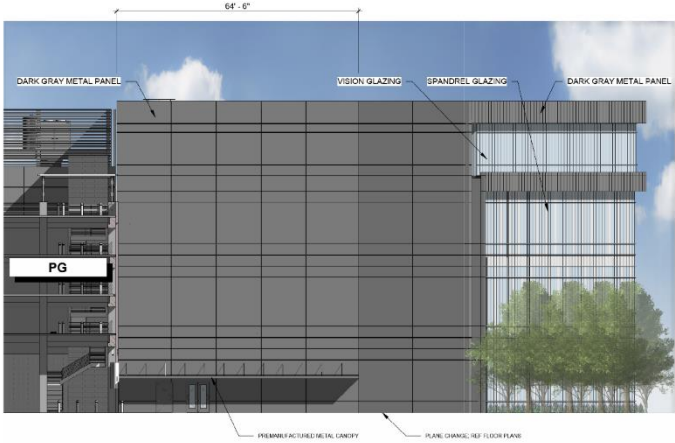
SVYAM



3 SVYAM - NORTH ELEVATION - VIEW FROM TRADE ZONE
1/16" = 1'-0"



2 SVYAM - WEST ELEVATION - VIEW FROM RINGWOOD
1/16" = 1'-0"



1 SVYAM - EAST ELEVATION
1/16" = 1'-0"

DATA CENTER ELEVATIONS

SVY05



2 SVY05 - OVERALL NORTH ELEVATION
1/18" = 1'-0"



1 SVY05 - SOUTH ELEVATION
1/18" = 1'-0"

DATA CENTER ELEVATIONS

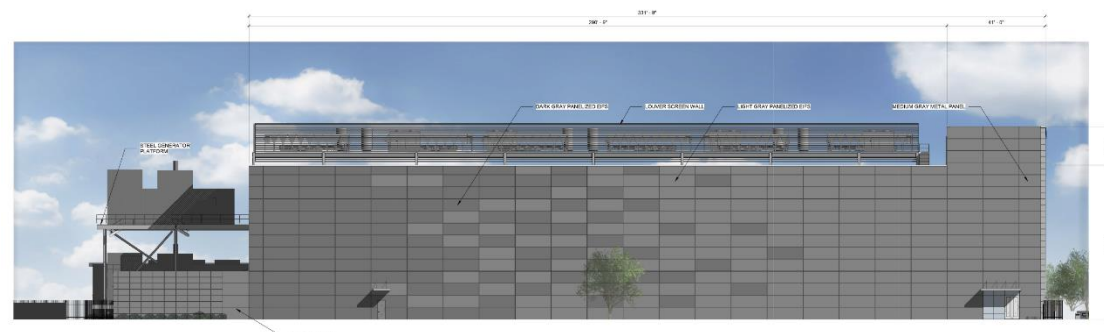
SVY06



2 SVY06 - NORTH ELEVATION
1/8" = 1'-0"

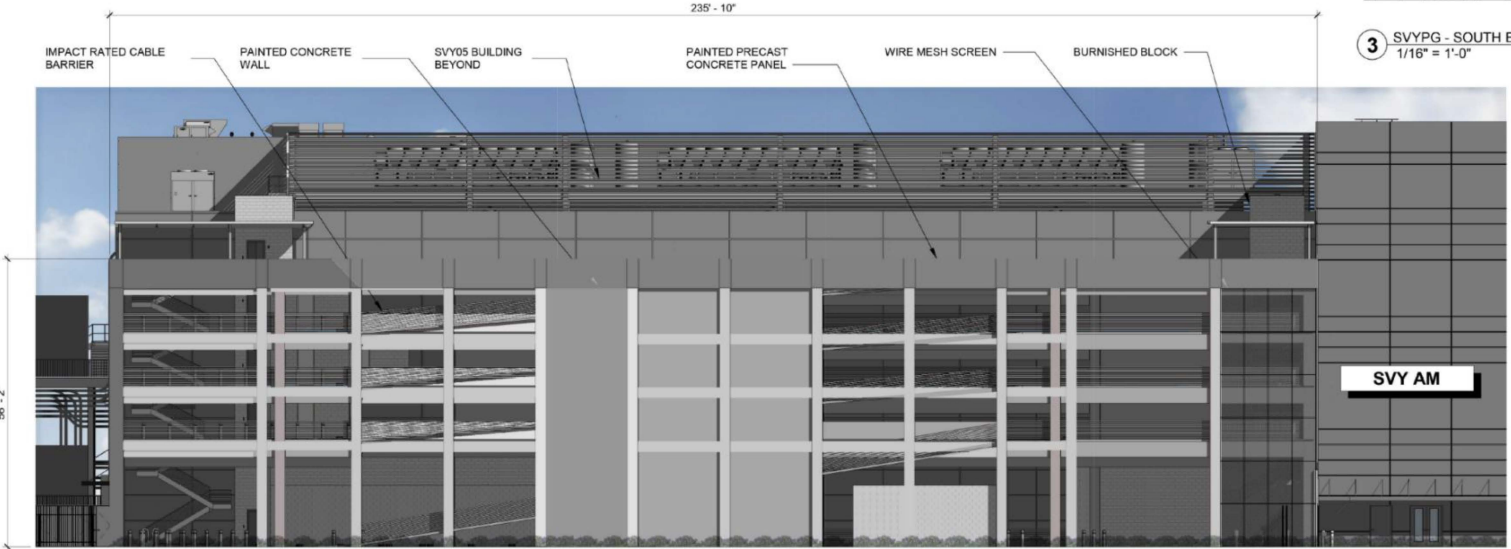


1 SVY06 - EAST ELEVATION
1/8" = 1'-0"

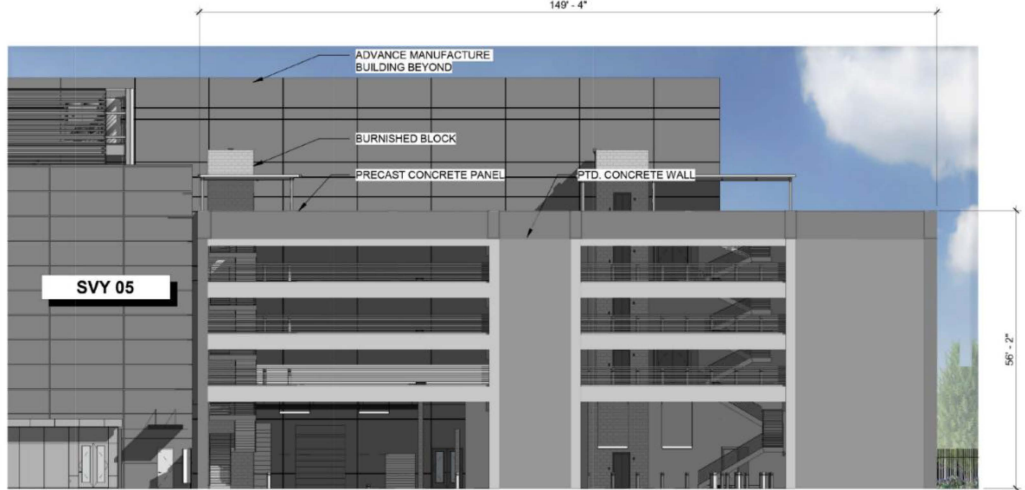


1 ELEVATION FROM RINGWOOD
1/8" = 1'-0"

PARKING GARAGE ELEVATIONS



1 SVY PG - EAST ELEVATION
1/16" = 1'-0"



3 SVY PG - SOUTH ELEVATION
1/16" = 1'-0"



2 SVY PG - NORTH ELEVATION
1/16" = 1'-0"

SVY 05

SVY AM