

**DOCKETED**

<b>Docket Number:</b>	20-LITHIUM-01
<b>Project Title:</b>	Lithium Valley Commission
<b>TN #:</b>	243075
<b>Document Title:</b>	Presentation - Convening of the Lithium Valley Commission
<b>Description:</b>	Presentation Slideshow of May 12, 2022 Lithium Valley Commission meeting.
<b>Filer:</b>	Erica Loza
<b>Organization:</b>	California Energy Commission
<b>Submitter Role:</b>	Commission Staff
<b>Submission Date:</b>	5/13/2022 3:56:04 PM
<b>Docketed Date:</b>	5/13/2022



# Convening of the Lithium Valley Commission

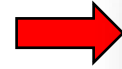
## Convocatoria de la Comisión de Lithium Valley

May 12, 2022



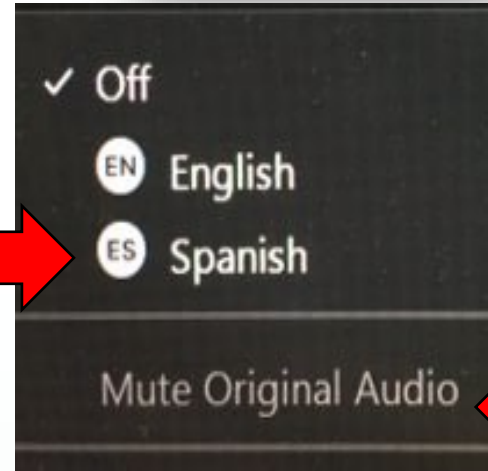
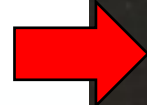
# Interpretation / Interpretación

1) Click globe “Interpretation” icon.



2) Click “ES Spanish” option

3) Click “Mute Original Audio”



1) Haga clic en el icono del globo de interpretación

2) Haga clic donde dice “ES Spanish”

3) Haga clic en “Mute Original Audio”

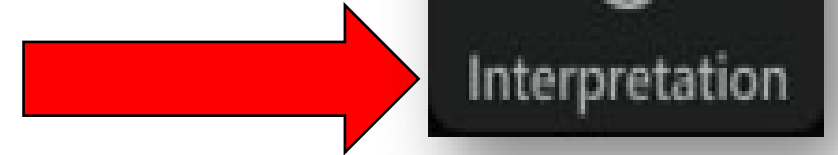
**NOTE:** To access interpretation, download Zoom application on your device. Interpreter will relate everything from English to Spanish during meeting and will inform you when to make public comment. Speak in Spanish and interpreter will relate comments to English.

**NOTA:** Para utilizar la función de interpretación, descargue la aplicación Zoom en su aparato. El intérprete relacionará todo lo dicho en inglés al español durante la junta y le informará cuándo podrá hacer un comentario público. Hable en español y el intérprete relatará sus comentarios en inglés.

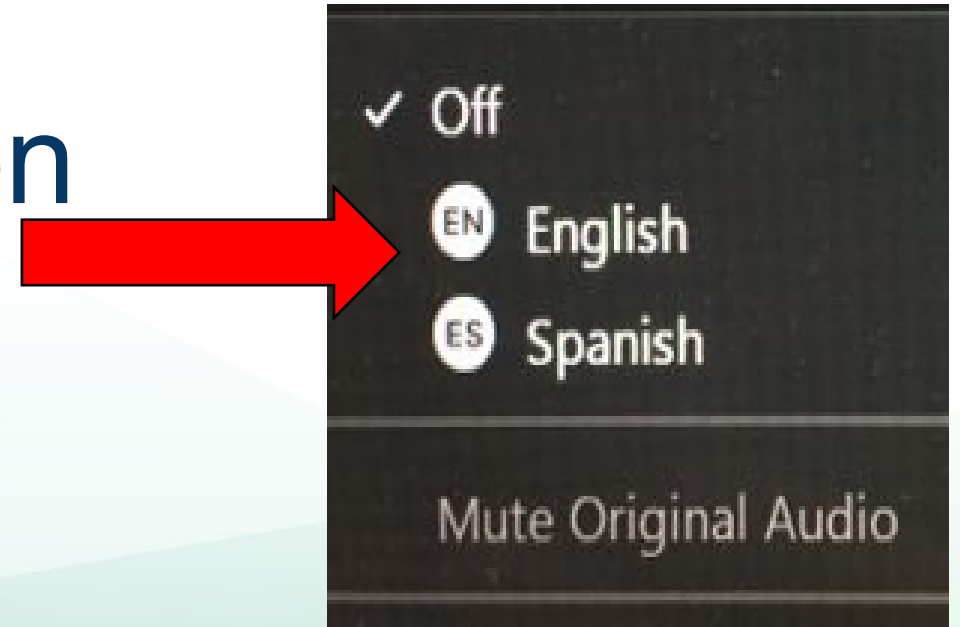


# Steps to Select English Channel

1) Click “Interpretation” icon.



2) Click “EN English” option



3) **DO NOT** select "Mute Original Audio"



# Instructions/ Instrucciones

- Meeting conducted with in person locations and remotely via Zoom
  - Recorded and transcribed by court reporter
- To participate in public comment...
  - By computer: use the “raise hand” feature in Zoom
  - By telephone: dial \*9 to “raise hand” and \*6 to mute/unmute your phone line
- Written comments
  - Submit through the e-commenting system at:
    - <https://efiling.energy.ca.gov/Ecomment/Ecomment.aspx?docketnumber=20-LITHIUM-01>
- Reunión realizada de manera presencial y remota a través de Zoom
  - Grabada y transcrita por un taquígrafo judicial
- Para participar en los comentarios públicos...
  - Por computadora: use la función de “levantar la mano” de Zoom
  - Por teléfono: marque \*9 para “levantar la mano” y \*6 para silenciar y activar el sonido
- Comentarios por escrito
  - Se deben enviar a través del sistema de comentarios electrónicos en: <https://efiling.energy.ca.gov/Ecomment/Ecomment.aspx?docketnumber=20-LITHIUM-01>



# Welcome and Roll Call / Bienvenida y paso de lista

- Introduction of New Lithium Valley Commission Member
- Presentación del nuevo miembro de la comisión de Lithium Valley



# Agenda / Agenda

- Welcome and Roll Call
    - Introduction of New Lithium Valley Commission Member
  - Administrative Items
    - Approval of Meeting Action Minutes for January 27, 2022, February 16, 2022, February 24, 2022, and March 24, 2022, Public Meetings
  - Informational Items
    - Media and Legislative Updates
  - Discussion and Possible Action on Draft Support Letter for Imperial County's Lithium Valley Economic Opportunity Investment Plan
  - Discussion and Possible Action on Draft Findings and Recommendations Identified During the Environmental Impacts Workshop Held March 24, 2022
  - Economic Impacts Workshop
    - Regional and Local Economy: Current Socio-economic Context
      - Discussion Among Lithium Valley Commissioners
    - Potential State and Community Economic Benefits of Lithium Valley Development
      - Discussion Among Lithium Valley Commissioners
  - Planning for Upcoming Workshops and Meetings
    - Determination of Agenda Topics, Speakers, and Presentations for Future Meetings
      - Possible Continuation of Environmental Impacts Workshop
      - Incentives Workshop
      - Overcoming Challenges to Lithium Extraction Workshop
    - Future Meeting Schedule and Locations
  - Informational Items
    - Lithium Valley Commissioner Updates
  - Public Comment
  - Adjourn
- Bienvenida y paso de lista
    - Presentación del nuevo miembro de la comisión de Lithium Valley
  - Temas administrativos
    - Aprobación de las actas de acción de las reuniones públicas del 27 de enero de 2022, el 16 de febrero de 2022, el 24 de febrero de 2022 y el 24 de marzo de 2022
  - Temas informativos
    - Actualización sobre medios y legislación
  - Discusión y posibles medidas sobre el borrador de la carta de apoyo al Plan de Inversión en Oportunidades Económicas de Lithium Valley del condado de Imperial
  - Discusión y posibles medidas sobre los borradores de los resultados y recomendaciones identificados durante el Taller de impacto ambiental que se realizó el 24 de marzo de 2022
  - Taller sobre impacto económico
    - Economía regional y local: Contexto socioeconómico actual
      - Discusión entre los comisionados de Lithium Valley
    - Posibles beneficios económicos estatales y comunitarios del desarrollo de Lithium Valley
      - Discusión entre los comisionados de Lithium Valley
  - Planificación de próximos talleres y reuniones
    - Determinación de los temas de la agenda, los oradores y las presentaciones para futuras reuniones
      - Posible continuación del Taller de impacto ambiental
      - Taller de incentivos
      - Taller de superación de los desafíos de la extracción de litio
    - Cronograma y ubicación de las futuras reuniones
  - Temas informativos
    - Actualización sobre el comisionado de Lithium Valley
  - Comentarios del público
  - Cierre de la sesión



# Administrative Items / Temas administrativos

- Approval of Meeting Action Minutes for
  - January 27, 2022
  - February 16, 2022
  - February 24, 2022
  - ~~March 24, 2022~~
- Aprobación de las actas de acción de la reuniones públicas del
  - 27 de enero de 2022
  - 16 de febrero de 2022
  - 24 de febrero de 2022
  - ~~24 de marzo de 2022~~





# Public Comment / Comentarios del público

## Comment Instructions:

Limited to 2 minutes per comment

**By computer:** use “raise hand” feature in Zoom

**By telephone:** dial \*9 to “raise hand” and \*6 to mute/unmute your phone line

\*\*\*\*\*

Instrucciones para los comentarios:

Límite de 2 minutos por comentario

**Por computadora:** use la función de “levantar la mano” de Zoom

**Por teléfono:** marque \*9 para “levantar la mano” y \*6 para silenciar y para activar el sonido





# Informational Items/ Temas informativos

- Media and Legislative Updates
- Actualización sobre medios y legislación



# Public Comment / Comentarios del público

## Comment Instructions:

Limited to 2 minutes per comment

**By computer:** use “raise hand” feature in Zoom

**By telephone:** dial \*9 to “raise hand” and \*6 to mute/unmute your phone line

\*\*\*\*\*

Instrucciones para los comentarios:

Límite de 2 minutos por comentario

**Por computadora:** use la función de “levantar la mano” de Zoom

**Por teléfono:** marque \*9 para “levantar la mano” y \*6 para silenciar y para activar el sonido





# **Discussion and Possible Action on Draft Support Letter for Imperial County's Lithium Valley Economic Opportunity Investment Plan/ Discusión y posibles medidas sobre el borrador de la carta de apoyo al Plan de Inversión en Oportunidades Económicas de Lithium Valley del condado de Imperial**



# Public Comment / Comentarios del público

## Comment Instructions:

Limited to 2 minutes per comment

**By computer:** use “raise hand” feature in Zoom

**By telephone:** dial \*9 to “raise hand” and \*6 to mute/unmute your phone line

\*\*\*\*\*

Instrucciones para los comentarios:

Límite de 2 minutos por comentario

**Por computadora:** use la función de “levantar la mano” de Zoom

**Por teléfono:** marque \*9 para “levantar la mano” y \*6 para silenciar y para activar el sonido





# **Discussion and Possible Action on Draft Findings and Recommendations Identified During the Environmental Impacts Workshop Held March 24, 2022/ Discusión y posibles medidas sobre los borradores de los resultados y recomendaciones identificados durante el Taller de impacto ambiental que se realizó el 24 de marzo de 2022**



# Public Comment / Comentarios del público

## Comment Instructions:

Limited to 2 minutes per comment

**By computer:** use “raise hand” feature in Zoom

**By telephone:** dial \*9 to “raise hand” and \*6 to mute/unmute your phone line

\*\*\*\*\*

Instrucciones para los comentarios:

Límite de 2 minutos por comentario

**Por computadora:** use la función de “levantar la mano” de Zoom

**Por teléfono:** marque \*9 para “levantar la mano” y \*6 para silenciar y para activar el sonido





# Economic Impacts Workshop / Taller sobre impacto económico

- Regional and Local Economy:  
Current Socio-economic Context
- Economía regional y local:  
Contexto socioeconómico actual





# **Adela de la Torre**

President

San Diego State University



**SDSU** | San Diego State  
University

---

# Lithium Valley Commission

Imperial County



# SDSU Imperial Valley Vision

## ❖ Investments and Expansions

- ❖ FUERTE – Environmental Health and Latinx Health Disparities (\$11M Invested from NIH)
- ❖ Doctor of Nursing, 4-Year Nursing Program Expansion (\$15M Invested from SDSU)
- ❖ First-of-its-kind Student Housing in Calexico, Partnership with IVC (\$8.8M Invested from Department of Finance)

## ❖ STEM Building at Brawley



# SDSU Imperial Valley

- ❖ History
- ❖ Programs and Degrees
- ❖ Student Population
- ❖ Community Engagement
- ❖ Fit with Serving Regional Economic Need

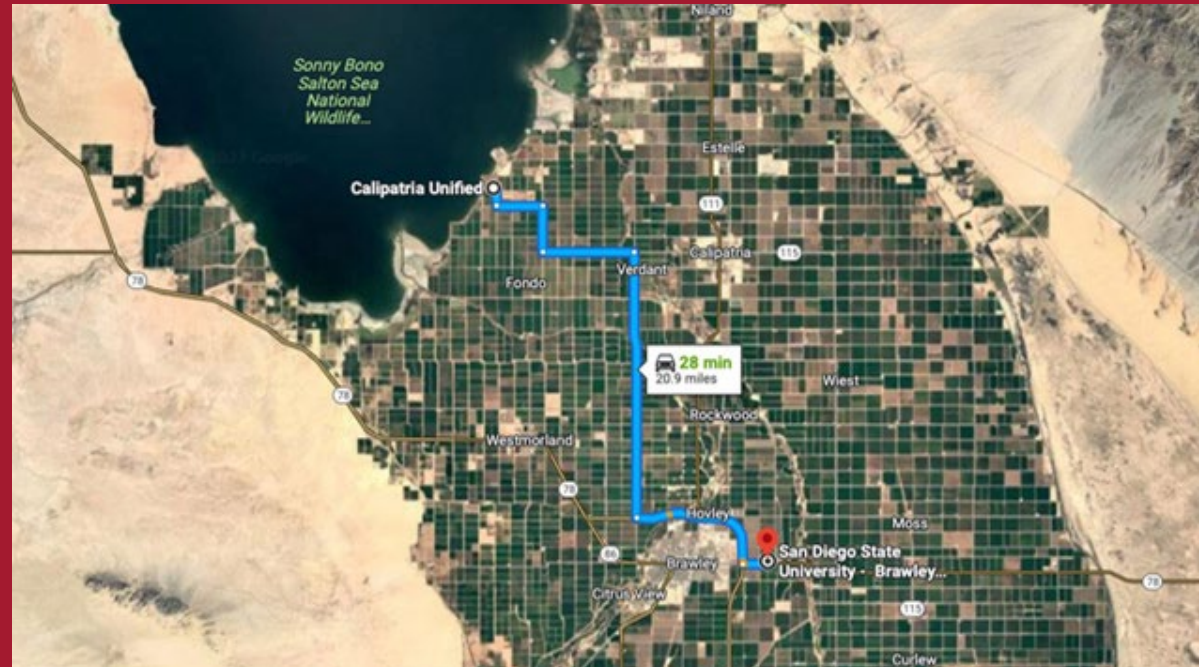


# Regional Economic Need

- ❖ Workforce Development in Imperial County
- ❖ Seasonal Industries in Imperial County
- ❖ Unemployment and Education
- ❖ Opportunities and Multiplier Effect of New Industry if Done with Valley-First Focus
- ❖ Adding Specific STEM Degrees Aligned with Need

# Engagement with Lithium Extraction Project Developers

- ❖ Southern California Energy Innovation Network
- ❖ Department of Energy Award
- ❖ Sustainable Energy Center at Brawley Campus





# Economic Opportunities with Lithium

Demand is driven by:

- Upgrading the nation's power grid
- The electrification of the transportation system.

Example: Electric Vehicles are now the state's largest export, and is projected to grow globally to 54 million in annual vehicle sales by 2040, up from 6.6 million in 2021.

Industry experts estimate that lithium extraction in the Imperial Valley alone could serve *one-third of today's global demand*.

There are currently four companies—Controlled Thermal Resources (CTR), TerraLithium, Berkshire Hathaway Energy Renewables (BHER), and EnergySource Minerals—all of which have engaged with SDSU on economic and workforce planning.

As each of the four companies develops their business plans and invests in demonstration plants (to open 2023) there are already several hundred new jobs to be created in the Valley.

# New Jobs Created in Imperial County

Job Category	Job Description	Typical Entry Level Education	Expected # of New Jobs Needed at Build Out	Median Income (2018)
Management	General and Operations Managers	Bachelor's degree	90	\$75,000
Engineer	Mining and Geological Engineers, Including Mining Safety Engineers	Bachelor's degree	105	\$91,000
Operator	Plant and System Operators, All Other	High school diploma or equivalent	1,640	\$69,000
Mechanic	Industrial Machinery Mechanics	High school diploma or equivalent	77	\$55,000
Electrician	Electricians	High school diploma or equivalent	46	\$71,000
Laboratory Chemist	Chemist	Bachelor's degree	98	
Laboratory Tech	Chemical Technicians	Associates' degree or Bachelor's degree	54	
EHS	Occupational Health and Safety Technicians	High school diploma or equivalent	55	
Admin	Secretaries and Administrative Assistants, Except Legal, Medical, and Executive	High school diploma or equivalent	66	\$39,000



# SDSU IV Innovation Center

- ❖ Public Private Partnership
- ❖ Proposed - Battery Recycling Pilot Line
- ❖ Proposed- Lithium Testing Facility
- ❖ Co-working laboratory and office space



# SDSU Imperial Valley Supporters & Partners





# Significant Existing Research with SDSU Faculty

- ❖ Public Health
- ❖ Environmental Health
- ❖ Air Quality Monitoring
- ❖ Battery - Components and 2nd Life
- ❖ Lithium Purification and Recycling
- ❖ Alternative Energy
- ❖ Environmental and Natural Resource Development



# Conclusion

- ❖ STEM Building Unlocks Local Workforce
- ❖ Community Coalition Essential
- ❖ Multiplier Effect Not Just Economically for Imperial County, but on Environmental and Natural Resource Development, Environmental Remediation of the Salton Sea.



# Thank You

---

Dr. Adela de la Torre, Ph.D  
President  
San Diego State University



# **Angelita V. Ortiz**

Interim Superintendent

Calipatria Unified School District



# **Opportunity At Our Door**

*A perspective for building and  
renewing our futures*

Angelita V. Ortiz  
Interim Superintendent,  
Calipatria Unified School District

**Calipatria Unified School District**  
**Serving the northern communities of**  
**Calipatria, Niland, Bombay Beach,**  
**Mineral Spa and Slab City**



**Fremont Primary School, TK-4**  
**Grace Smith School, K-4**  
**Bill E. Young, Jr. Middle School, 5-8**  
**Calipatria High School, 9-12**

**1143 Enrollment**  
**87.1%**  
**Socio-Economically**  
**Disadvantaged**  
**30.5%**  
**English Learners,**  
**primary language of**  
**Spanish**  
**17.6% Students of**  
**Migrant Families**  
**10.5% Students with**  
**Disabilities**



# Educational Opportunity

- ▶ Course work and learning experiences aligned to industry across the grade levels
- ▶ Career Technical Education (CTE)
  - Sector and Pathway Expansion
- ▶ Internships/work based learning experiences for students and staff

# Educator Opportunity

- ▶ Teacher Preparation Programs Local opportunities  
Strategic use of distance learning
- ▶ Scholarships and Grants
- ▶ Local Conferences and workshops

# Socio Economic Opportunity

- ▶ Adult Education and Alternative Programs for Entry Level positions
- ▶ Access to local post-secondary college and career programs with a direct connection to the industry
- ▶ Increase technology access and utilization of local training centers

# Community Opportunity

- ▶ Housing and Community Development
- ▶ Health and Safety Services
- ▶ Public Transportation Services

Priority is to ensure within the community

Access and availability will be key

## Closing Remarks

As the opportunity to renew an interest in our local resources is here, the advocacy for linkage with TK-12 is vital to ensure we can grow.

Grow in creating college and career ready high school graduates. Grow in creating local thriving communities with investments for local needs and economic growth.

Grow in partnerships that will set the stage for long term commitments and enrichment.

Calipatria Unified is excited for the future possibilities.

# Credits

Special thanks to all the people who made and released these awesome resources for free:

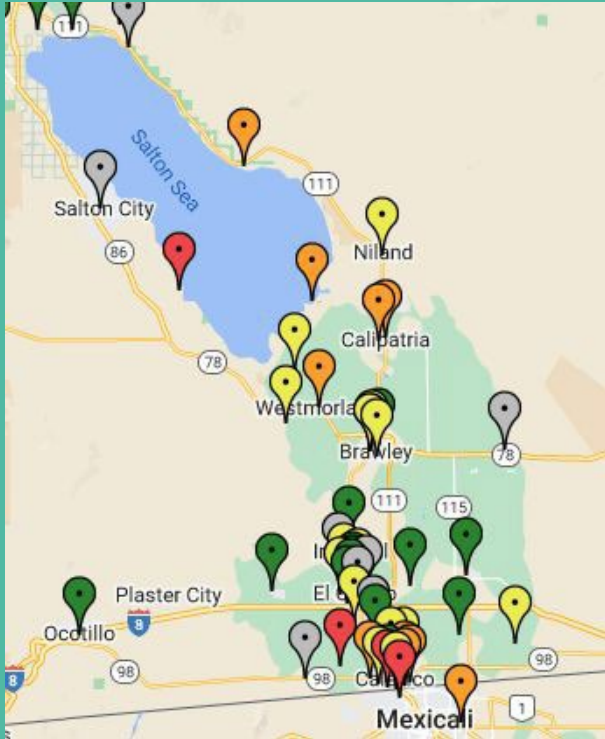
- ▶ Presentation template by [SlidesCarnival](#)
- ▶ Photographs by [Unsplash](#)





# **Daniela Flores, MPH**

Imperial Valley Equity and Justice Coalition



Source: IVAN Imperial Valley

---

# Socio-economic context in Lithium Valley

Daniela Flores, MPH  
Community Organizer and Advocate  
Imperial Valley Equity & Justice Coalition

---

Imperial Valley  
**Equity & Justice**  
**Coalition**



# Key questions

## Question 1:

What are the current **economic** and **social conditions** in the region that influence the development of recommendations for the Lithium Valley Commission report to the legislature?

## Question 2:

What recommendations would you suggest that the Lithium Valley Commission includes in the report that support the socio-economic development in the region and can be translated into policies, legislative bills, regulation?

# PUBLIC HEALTH REPORTS

VOL. 59

OCTOBER 4, 1935

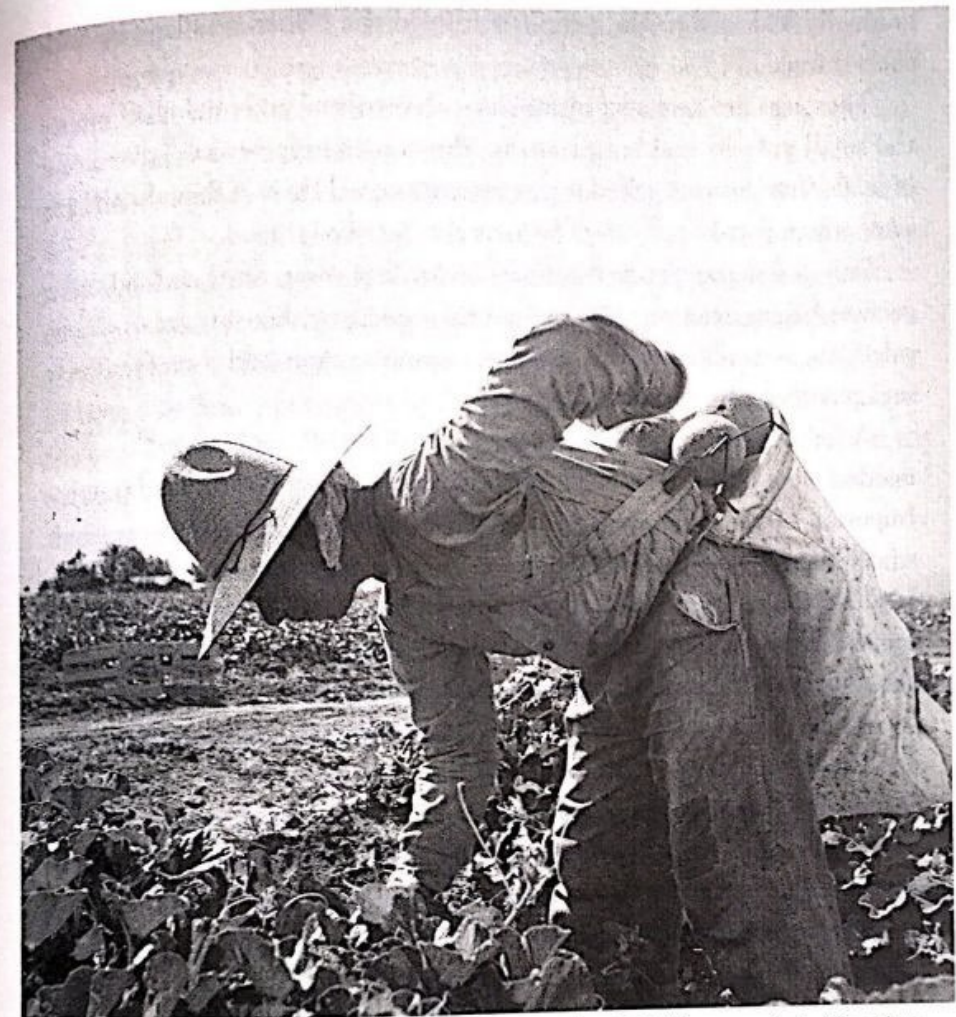
NO. 40

## DUST STORMS AND THEIR POSSIBLE EFFECT ON HEALTH\*

With Special Reference to the Dust Storms in Kansas in 1935

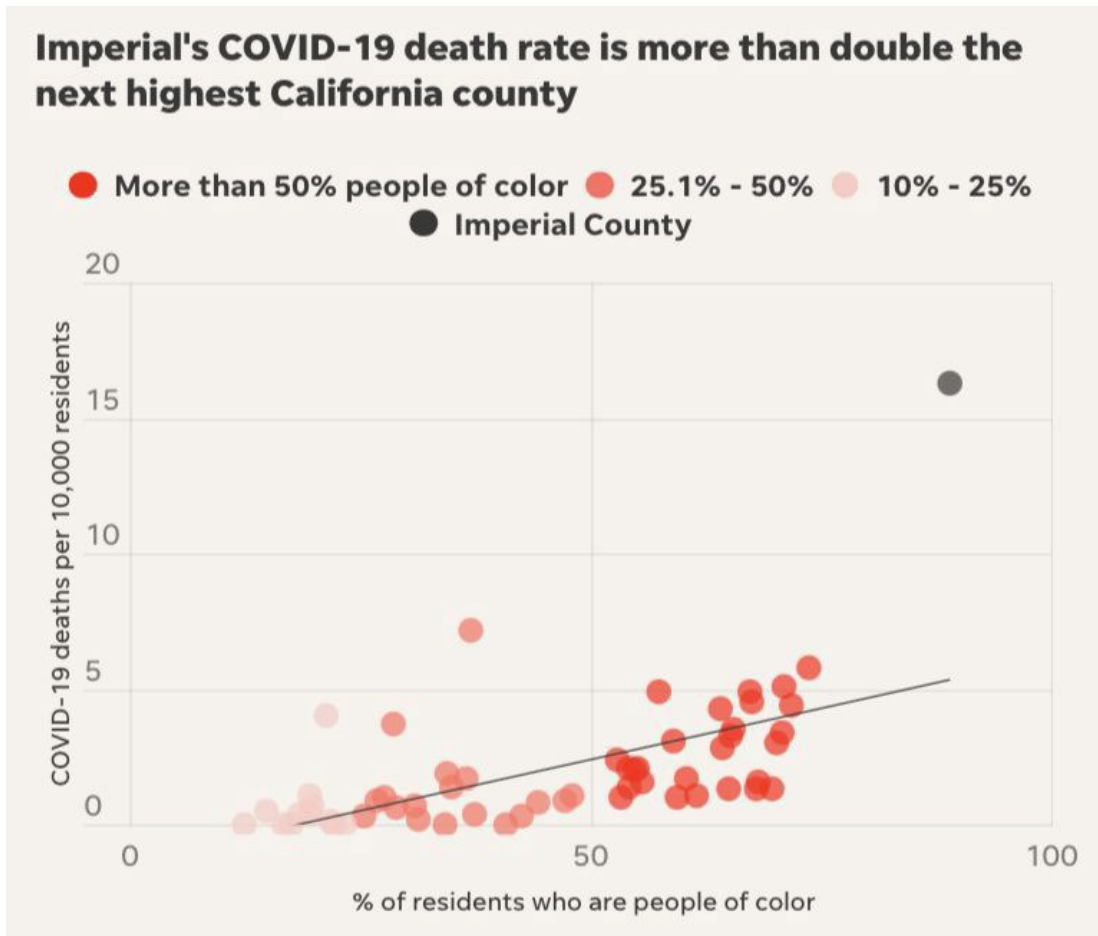
By EARLE G. BROWN, M. D., *Secretary and Executive Officer*, SELMA GOTTLIEB, Ph. D., *Chemist, Division of Sanitation*, and ROSS L. LAYBOURN, M. S., *Bacteriologist in Charge, Public Health Laboratory, Kansas State Board of Health*

In the course of the past year, Kansas has experienced a variety of weather conditions. An unusually severe drought prevailed during the past 3 years, extending into the spring of 1935. New high temperature records were established in the summer of 1934, and the total of nearly 300 deaths from excessive heat was four times the previous high of 75 deaths in 1931. As a result of the drought, dust storms of unprecedented intensity and duration occurred during the 3-month period from (including part of the two months) February to May, inclusive, of the present year. During May 1935, the drought was broken and excessive rainfall was recorded in nearly all parts of the State. Floods occurred, especially along the course of the Solomon, Republican, Blue, Kansas, Marias des Cygnes, and Neosho Rivers. Flood waters reached new high marks; homes, crops, livestock, bridges, highways, and public properties have been destroyed; but, fortunately, the loss of human life has been small. By way of contrast, on June 2, when floods were at their height in eastern Kansas, an unusually severe dust storm occurred at Garden City. For variety, an earthquake occurred in northeastern Kansas on March 31. It was of but a few seconds' duration, and no property damage was recorded. Our purpose in this paper, however, is to present certain data in regard to dust storms.



Mexican farm worker picking melons in Imperial Valley, 1937. Photograph by Dorothea Lange. Library of Congress, Prints & Photographs Division, FSA/OWI Collection, LC-DIG-fsa-8b31916.

# Social Determinants of Health

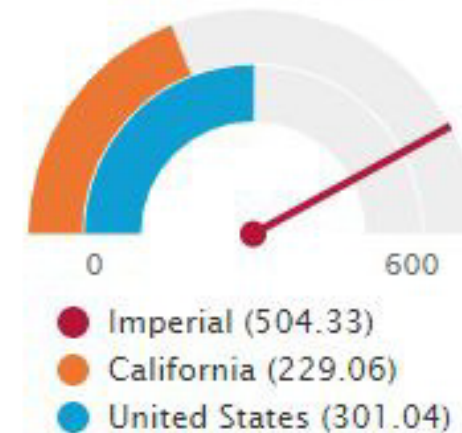


Source: [Worked to death: Latino farmworkers have long been denied basic rights. COVID-19 showed how deadly racism could be.](#)

## COVID-19 Deaths

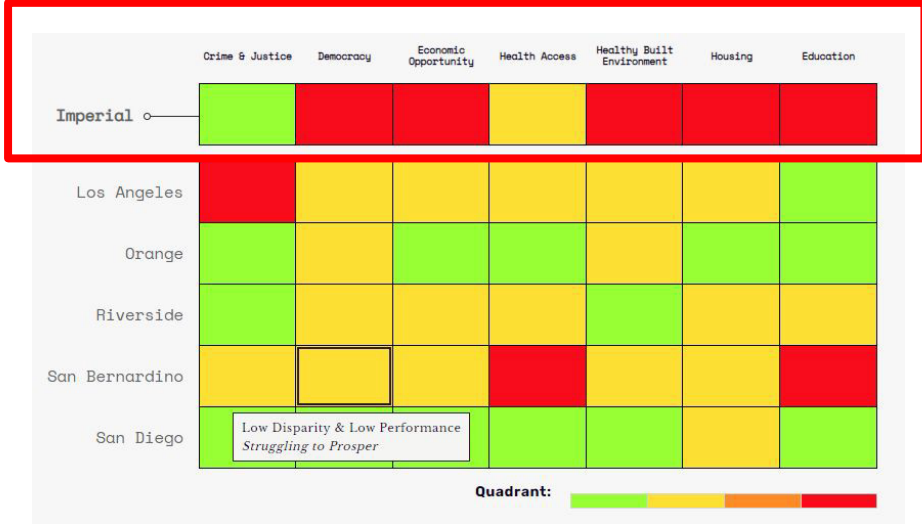
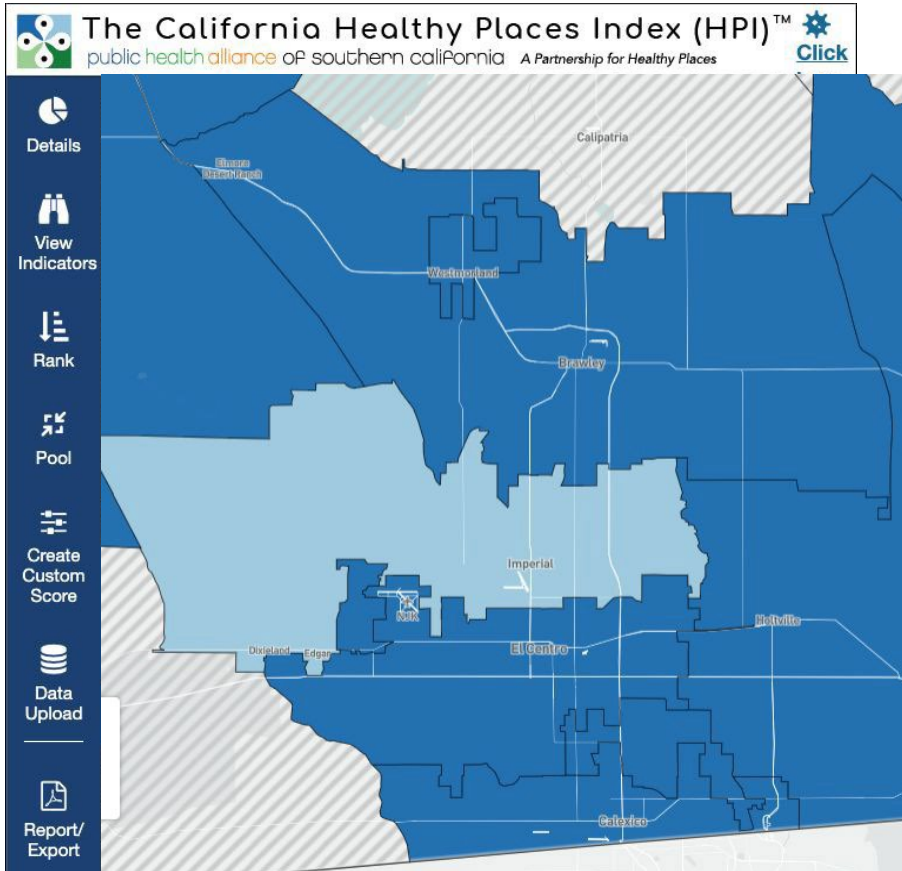
Imperial County has 917 total confirmed COVID-19 deaths as of 05/10/2022. The local mortality rate is 504.33 per 100,000 population, which is MORE than the state average of 229.06.

COVID-19 Deaths, Crude Rate per 100,000 Population



Source: [Salud America! Health Equity Report Card](#)

# Data on Imperial's Disparities



**Sources:**

<https://www.healthyplacesindex.org/>  
<https://www.racecounts.org/county/imperial/>

# Snapshot of socio-economic conditions

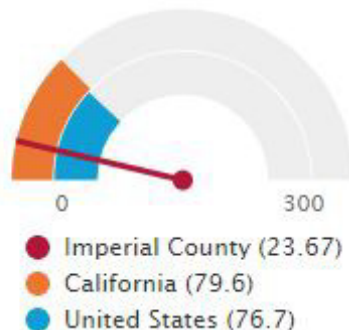
## Healthcare

### Access to Primary and Prenatal Care Rate

In Imperial County, there are 23.67 primary care physicians per 100,000 population.

In your county, of women do not obtain prenatal care during their first trimester of pregnancy.

Primary Care Providers, Rate per 100,000 Population

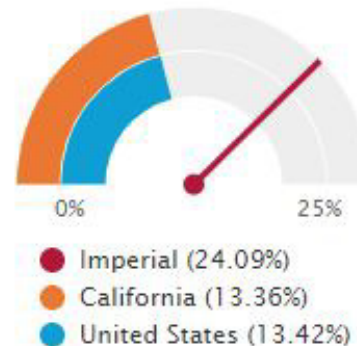


## Socioeconomic status

### Population Below Poverty Level

In Imperial County, 24.09% of individuals are living in households with income below the Federal Poverty Level (FPL). Poverty creates barriers to access including health services, healthy food, and other necessities that contribute to poor health status.

Population in Poverty, Percent

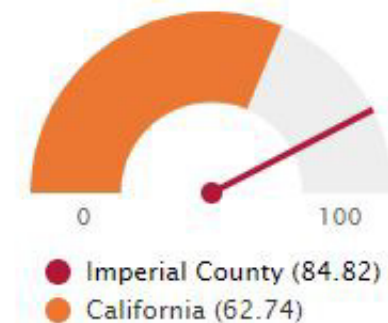


## Housing

### Hours per Week at Average Wage Needed to Afford 2-Bedroom

In order to afford the average-priced 2-bedroom home in Imperial County, a person would have to work 84.82 hours per week at average wage.

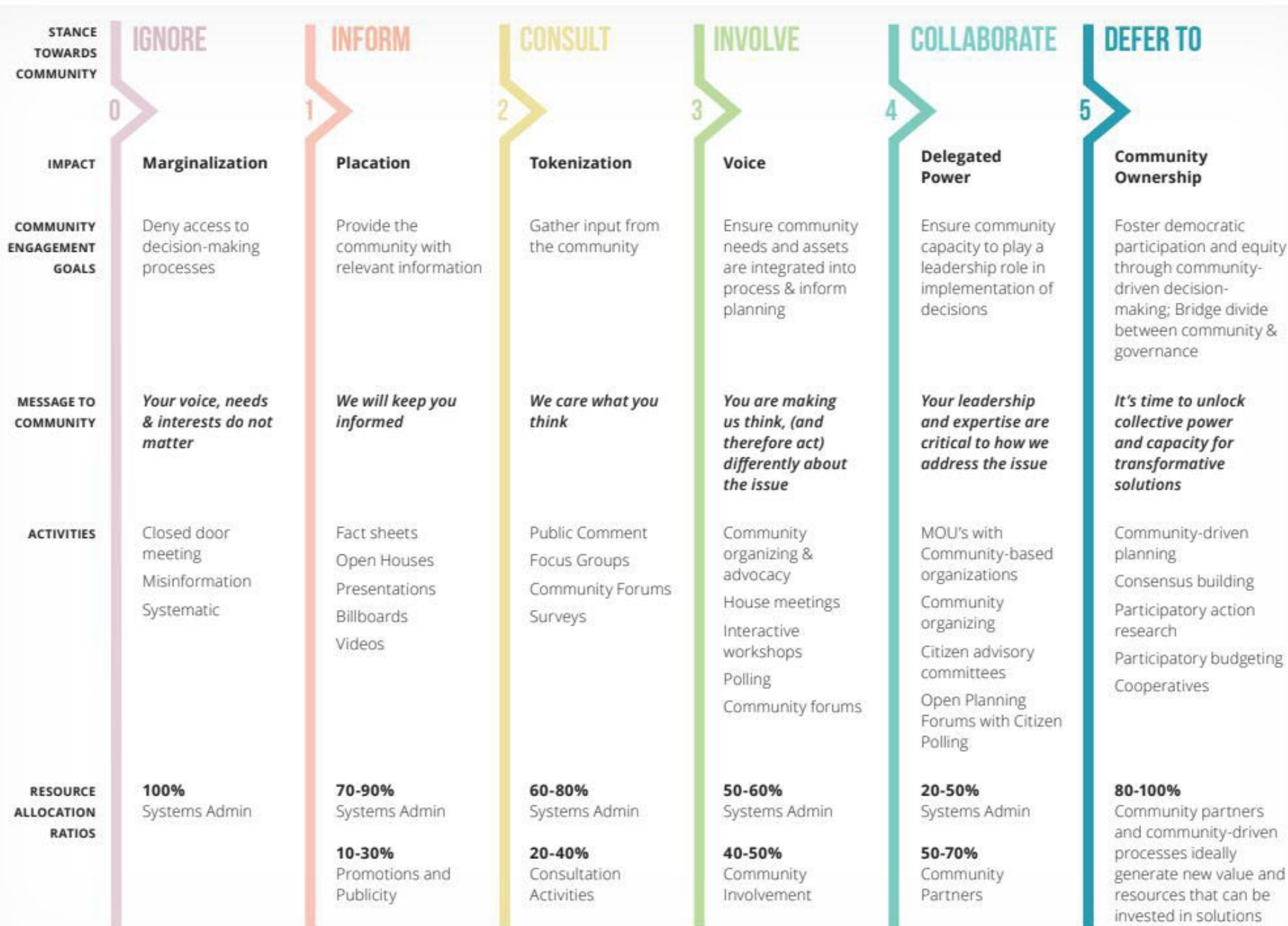
Hours per Week at Average Wage to Afford 2-Bedroom



# Recommendations for ensuring equity in Lithium Valley's CBA, tax revenue, planning, permitting

Critically address key questions from health equity experts:

1. Are those **most affected by Lithium extraction actively involved** in defining the problems and shaping the solutions?
2. How do policies, legislative bills, regulation **improve the conditions for those communities most in need**?
3. Will those **most negatively affected** by Lithium extraction benefit the same, less so, or more so?
4. What **barriers** or **unintended consequences** should be accounted for to make Lithium Valley effective in underserved communities?
5. How can we ensure effective implementation and enforcement of identified strategies across population groups or communities?



Source: [Spectrum of Community Engagement to Ownership](#)

# Recommendations for ensuring meaningful community engagement in Lithium Valley

- **Community ownership** in Community Benefit Agreements. Community engagement goals foster democratic participation and equity through community-driven decision-making, bridges the divide between community & governance
- Consensus building, **community driven planning**, participatory budgeting are activities prioritized
- **Community-based organizations play a critical role** in cultivating community capacity to participate in and lead decision-making processes that meet community needs and maximize community strengths.
- Government have essential roles to play in helping to **facilitate systems changes to increase community voice and decrease disproportionate harms** caused to low-income communities and communities of color.



---

[bit.ly/LVC0512](https://bit.ly/LVC0512)



Sources/resources

---

---

**Feel free to reach out to us**  
**at**  
**[ivequityjustice@gmail.com](mailto:ivequityjustice@gmail.com)**  
**with questions or comments**



# **Discussion among Lithium Valley Commissioners / Discusión entre los comisionados de Lithium Valley**



# Economic Impacts Workshop / Taller sobre impacto económico

- Potential State and Community Economic Benefits of Lithium Valley Development
- Posibles beneficios económicos estatales y comunitarios del desarrollo de Lithium Valley



# Trelynd Bradley

Senior Business Development Specialist

Governor's Office of Business and Economic Development (GO-Biz)

# Economic Impacts – Lithium Valley Commission



**Governor's Office of Business and  
Economic Development (GO-Biz)**

**Trelynd Bradley**

**Senior Business Development Specialist**

**[Trelynd.Bradley@GOBIZ.CA.GOV](mailto:Trelynd.Bradley@GOBIZ.CA.GOV)**



# Governor's Office of Business and Economic Development (GO-Biz)



**GO-Biz Mission**

- Point of contact for economic development and job creation efforts
- Offers services to business owners, communities, and site selectors



**California Business Investment Services**

- Tailored consultation, site selection, and incentive navigation for business
- Provide communities business incentive identification tools/resources



**Community Based Solutions / Place-Based Support**

- Tailored consultation for communities / local governments / EDO's
- Opportunity Zones, Tax Increment Financing Tools, Promise Zones



**Additional GO-Biz Teams / Services**

- Permit Assistance, International Affairs & Trade, Office of the Small Business Advocate, External Affairs, California Competes Tax Credit



## 1. Market Opportunities for Lithium

- Critical Minerals - Value
- Applicable Industries/Sectors
- Supply Chain Ecosystem

## 2. Economic Impacts of Lithium Recovery

- Innovation / R&D
- Local Value Generation for Community Projects
- Workforce / Education



## 3. Supporting Lithium Recovery

- Economic/Community Development
- Encouraging and Attracting Investment
- Local Value Capture





# Market Opportunities for Lithium



**Global demand for critical minerals such as lithium, boron, and rare-earths is expected to surge by 400-600% in the coming decades.**



**California has ambitious climate goals, such as 100% clean energy by 2045 and 100% zero-emission vehicle sales by 2035.**



**These minerals are needed to meet California's ambitious climate goals, as well as the rapidly growing demand for clean technologies such as zero-emission vehicles, wind turbines, solar panels, and battery storage systems.**



**The existing battery supply chain is approximately 50,000 miles long, which unnecessarily raises monetary and environmental costs.**

# Market Opportunities for Lithium

## Lithium



The U.S. currently only produces 1% of the global lithium supply but possesses 8.5% of the world's lithium reserves. Lithium Valley alone has the capacity to meet up to 40% of global lithium demand.

Lithium Valley is located in Imperial County, a climate-vulnerable region of California. Lithium Valley provides an opportunity to create high-quality jobs, training opportunities, and new clean industries in an emerging inland region of the state.

## <sup>5</sup> **B** Boron

Due to its application in key sectors of the future such as clean energy and food security, demand for boron is expected to outpace supply in the decades to come. There are only 6 potential boron projects in the world, with the sites at Boron, CA and Fort Cady, CA being among the richest.

## <sup>59</sup> **Pr** Rare-Earths

In addition to producing 15% of the world's rare-earths supply, Mountain Pass is also the most environmentally-friendly rare earth operation in the world: 95% of water is recycled, there is no radioactive byproduct, and the risk of groundwater contamination has been virtually eliminated.



# Market Opportunities for Lithium

## Transportation

- Electric Vehicle Batteries – vehicles
- Hydrogen storage
- Metal-to-metal lubricating grease applications
- Batteries/Ceramics – electric aircraft / EVTOL
- Multiple mobility applications battery related

## Energy

- Ceramics/glazes – wind turbine blades
- Energy Storage Systems (battery/hydrogen)
- Nuclear fusion reactors
- Various heat-transfer applications

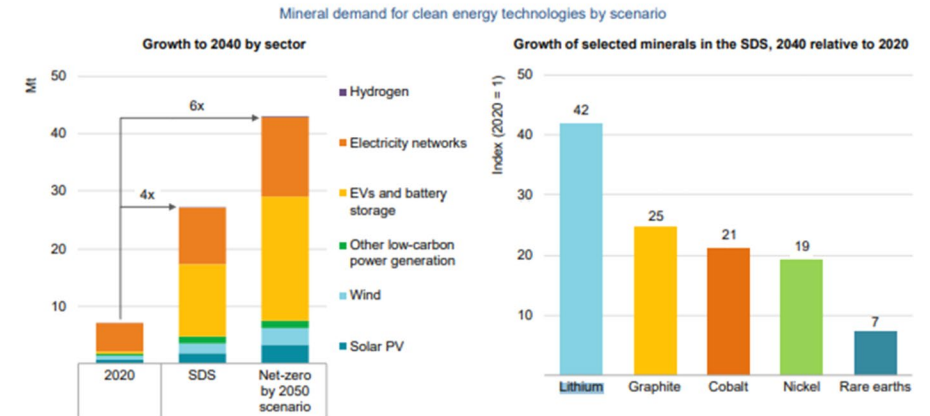
## Aerospace, Defense, & Commercial Space

- Alloys/Plating – armor, aircraft, vehicle frames
- Battery-powered drones / aircraft
- Oxidizing agents – rocket propellants and in providing oxygen to submarines and space capsules

## Medical

- Battery/Power – hearing aids, pacemakers, batteries, defibrillators, infusion pumps
- Pharmaceuticals
- Special glasses and ceramics for medical devices

Mineral demand for clean energy technologies would rise by at least four times by 2040 to meet climate goals, with particularly high growth for EV-related minerals



Notes: Mt = million tonnes. Includes all minerals in the scope of this report, but does not include steel and aluminium. See Annex for a full list of minerals. IEA. All rights reserved.



# Market Opportunities for Lithium | Example: Battery Day

B2U Storage Solutions	XOS Trucks	Beam Global	Ample
Rio Tinto	Enzinc Inc.	Romeo Power	ReJoule
Volvo Group North America	5E Advanced Materials	EnergySource Minerals	OnTo Technology
Sparkz	Joby Aviation	Statevolt	Controlled Thermal Resources
Mobius Energy	BYD	Cuberg	Tesla
Berkshire Hathaway Energy			

- Last month, GO-Biz and CEC co-hosted a business event to highlight opportunities, challenges, and supply chain considerations for companies in the battery supply chain
- **Examples:** recyclers, R&D, processors, manufacturers, aviation, recharging/reuse, different chemistries



# Economic Impacts – Lithium Recovery

- **Research & Development / Innovation / Entrepreneurship**
  - Activities already existing in California and region
  - R&D opportunities often collocated with manufacturing
    - I.E. Manufacturer partners with multiple battery technologies and developers in a single facility
  - University, federal lab, and other academic partnerships
- **Value Proposition for Supply Chain Proximity**
  - Battery example – cathode material, recycling
  - Aerospace example – ceramic and armor coating
  - Transportation projects and investments (rail/port)
- **Value Generation from Project Investment**
  - Property Tax / Sales Tax / Infrastructure Investment
  - Facilitate real-estate projects, and amenities (workforce housing, broadband deployment, community centers)



# Supporting Lithium Recovery

## Economic Development, Community Development, and Infrastructure

- **Technical assistance / Local capacity at community-level (staffing, grant writing, match funding)**
  - *Examples: Distressed Cities Technical Assistance Program / BOOST Program*
- **Local lending capacity**
  - *Examples: CDFIs, banks, other localized financial institutions*
- **Development of place-based inventory and incentives to de-risk investment for project capital stack**
  - *Examples: Opportunity Zones, New Market Tax Credits, Tax Increment Financing*
- **Feasibility studies for tax increment financing districts (EIFD/CRIA)**
  - *Examples: Broadband, affordable housing, parks/community centers, transportation, utility infrastructure and relocation (water/electricity), pre-development to de-risk projects*
- **Planning, permitting, and zoning (project and ecosystem readiness)**

## Business Development, Workforce, and Entrepreneurial Development

- **Accelerators / Innovation Hubs / Small Business Development Centers**
  - *Access to capital, venture capital, Opportunity Zone capital*
- **Place-based/sector-based business incentive programs to encourage investment attraction and expansion**
  - *Example: CAEATFA designation of lithium as emerging strategic industry, New Employment Tax Credit Areas*
- **Business incentives that can compete with other state incentive programs for large manufacturing**
  - *Example: CalCompetes Tax Credit/Grant, ZEV manufacturing grants*
- **Creation of workforce training partnerships with community colleges and university system**
  - *Examples: Multiple Employer Contract at Employment Training Panel (ETP), High Road Training Partnerships*
- **Creation of incentives for infrastructure development supportive of supply chain**
  - *Examples: Railroad spurs, transloading facilities, road access*



# Supporting Lithium Recovery | Example: Capturing Value for Community Projects

**Economic Development Districts**

California hosts a multitude of place-based tools and districts to support local agencies in propelling business and economic development – whether that is through infrastructure, affordable housing, transportation, or direct assistance to businesses. These tools and districts offer a range of capabilities, such as funding direct construction, providing streamlined environmental review, or allowing for grants and financing directly to business and property owners.

Due to the place-based nature of many of these districts, they pair well with one another, as together they can facilitate the layering of mixed forms of public and private capital in the stack of project development. Across California, local agencies are evaluating, creating, and cataloging many of these districts alongside one another and establishing creative models to spur economic development in areas of economic distress and need.

[Contact us](#)

**Popular Districts**

- Business Improvement Districts (BIDs)
- Community Facilities Districts (CFDs)
- Community Revitalization & Investment Authorities (CRIAs)
- Enhanced Infrastructure Financing Districts (EIFDs)

**Other Districts**

- Affordable Housing Authorities (AHAs)
- Annexation Development Plan Area (ADPs)
- Housing Sustainability Districts (HSDs)
- Infrastructure and Revitalization Financing Districts (IRFDs)
- Infrastructure Financing Districts (IFDs)
- Neighborhood Infill Finance and Transit Improvement Districts (NIFTI 1 and 2)
- Seaport Infrastructure Financing Districts (SIFD)
- Workforce Housing Opportunity Zones (WHZOZs)

- Importance of capturing projected value to finance projects that align with community-led goals and needs
- Cities and counties across California are using tax-increment financing for their communities to support such projects
- These districts are used to **finance** redevelopment, community projects, or other investments using the anticipation of future **tax** revenue resulting from new development. (Capturing future value from property tax to support infrastructure and projects)
- **Examples:** Fresno, Humboldt, Palmdale, La Verne, West Sacramento, Fullerton

## Supporting Lithium Recovery | Example: Capturing Value for Community Projects

### Community Revitalization and Investment Authority (CRIA)

- Infrastructure / public works
- Civic infrastructure
- Parks / libraries
- Healthcare infrastructure (clinic)
- Assist business (grants and loans)
- Aid tenants to upgrade building/infrastructure
- Services to community members
- Affordable housing requirement
- Only specified areas eligible
- Acts as independent body under community redevelopment law
- Eminent domain authority under limited use cases

### Enhanced Infrastructure Financing District (EIFD)

- Infrastructure / public works
- Civic infrastructure
- Transit / rail projects
- Parks / libraries
- Roads / bridges / transit
- Affordable housing
- Military base reuse if applicable
- Formulated with Infrastructure Financing Plan
- Under infrastructure law not community development law
- No housing restrictions (like CRIA)



## Supporting Lithium Recovery | Example: Capturing Value for Community Projects



# Thank you!



**Governor's Office of Business and  
Economic Development (GO-Biz)**

**Trelynd Bradley**

**Senior Business Development Specialist**

**[Trelynd.Bradley@GOBIZ.CA.GOV](mailto:Trelynd.Bradley@GOBIZ.CA.GOV)**





# **Rebecca Terrazas**

Director

Imperial County Intergovernmental Relations



# Imperial County Lithium Valley Economic Opportunity Investment Plan



**Lithium Valley Commission Briefing**

**May 12, 2022**

# Setting the Table

68

- ▶ Imperial County unemployment rates 12.3% (March, 2022) about 2 ½ times the unemployment rate of California (4.9%)
- ▶ Median Household Income 3/4 of National Average
- ▶ Poverty Rate 2x National Average
- ▶ Current Gross Domestic Product (GDP):  
\$9 billion
- ▶ Estimated 15 million metric tons of lithium available to extract
- ▶ Lithium/Rare Mineral Extraction & Geothermal Energy could DOUBLE Imperial County GDP in next 5-10 years

# County of Imperial Actions

69

- ▶ 2/14/22: County Board of Supervisors unanimously approved the Lithium Valley Economic Opportunity Investment Plan (LVIP)
- ▶ Plan calls for intentional actions of the County and specific requests of the State and Federal Government
- ▶ County created a Lithium-Rare Mineral Subcommittee (Chair Escobar, Supervisor Ryan Kelley) with key staff members (County CEO, Planning Director, Public Works Director, Legislative Relations, Workforce Development and Economist/Economic Development Consultant)
- ▶ Conducted 12+ briefings of local, state and federal officials (10+ additional scheduled over next 3 weeks)

# Status on County Actions

70

- ▶ County negotiating to begin a Specific Plan (SP) and Programmatic Environmental Impact Report (PEIR) for the Lithium Valley area
- ▶ County partnered with Southern California Association of Governments (SCAG) to begin process of an Enhanced Infrastructure Finance District (EIFD)
- ▶ County has retained an Economist to produce Economic/Job (Employment) and Fiscal Impact Analysis of SP/PEIR for Lithium Valley
- ▶ County in direct discussions with State and Federal Officials on portions of LVIP
- ▶ County taken action to support San Diego State University (Imperial Valley Campus) to expand facilities in the region (Brawley) to provide Science/Technology educational opportunities
- ▶ County taken action to support California Energy Commission proposed rulemaking to provide additional local control

## Follow-up

*Additional Information Regarding the Lithium Valley Economic Opportunity Investment Plan (LVIP) is Available at:*

**[Lithiumvalley.imperialcounty.org](http://Lithiumvalley.imperialcounty.org)**

Miguel Figueroa, County Executive Officer  
[MiguelFigueroa@co.imperial.ca.us](mailto:MiguelFigueroa@co.imperial.ca.us)

Gilbert Rebollar, Public Information Officer  
[GilbertRebollar@co.imperial.ca.us](mailto:GilbertRebollar@co.imperial.ca.us)





# **Cecilia Estolano and Sarah Friedman**

CEO and Senior Policy Director  
Better World Group

# Centering Community Benefits from Lithium Development at the Salton Sea



**Better World**  
Group

# Better World Group's Scope with Salton Sea

The State has contracted with the **Better World Group (BWG)** to facilitate community engagement towards the goal of developing feasible amenity projects that address the needs of community members and the State's funding parameters.



BWG will build a **Community Amenities Strategy Document**. This document will be developed collaboratively with direct input and involvement from community members and representatives. The intent is to identify community needs to incorporate into SSMP projects (near-term and long-term) and related efforts when possible.

# Community Amenities

## BWG's Work to Date:

1) 40 + one-on-one interviews

2) Literature Review of 1+ reports, letters, and meetings with public comments

3) LRP Committee facilitation



### Our Next Steps:

(1) Ground truthing &  
(2) Mapping benefits to funding opportunities and processes

### Community Infrastructure at Salton Sea:

10-Year Plan Projects  
Long Range Plan



- Physical infrastructure to improve quality of experience for community
- Equitable Access
- Programs

### Programmatic Benefits:

Ongoing State & Federal Initiatives



- Public health: health clinics/providers, air quality
- Climate resilience
- Education
- Local hiring commitments and training

### Regional Benefits:

Other Programs and Funding Opportunities



- Broadband access
- Affordable housing
- Reliable electricity
- Sidewalks, roads
- Public transportation
- Water and sewage

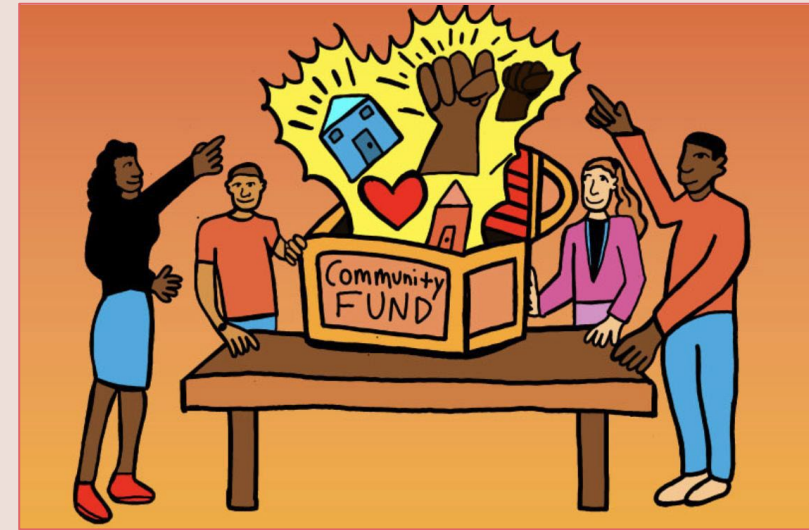
# Successful Community Benefits Structures

- Clear Commitments in a Legally Enforceable Document (CBA)
- Ongoing Monitoring and Enforcement Mechanisms
- Community Oversight and Accountability
- Forum for Collaborative Problem-Solving
- Permanence/Durability

# Case Study:

## Google Community Stabilization Fund

- Fund provides resources to:
  - Minimize displacement from rising costs; and
  - Maximize opportunities for youth and adults to participate in job opportunities through: training, education, and support
- Emphasizes community-led decision making by:
  - Balancing technical knowledge and lived experience;
  - Amplifying local voices of impacted communities;
  - Focusing on equity; and
  - Providing a transparent decision making process.
- Jointly overseen by community representatives



# Recommendations for Legislature

- Local hire and high road commitments and metrics
- Training commitments for residents
- Technical assistance and funding for community residents to participate in community benefits discussions
- Oversight authority
- Funding for ongoing O+M of Salton Sea projects
- Require negotiation of Community Benefits Agreement





# Jordan Sisson

Community Benefits Plan





# **Discussion among Lithium Valley Commissioners / Discusión entre los comisionados de Lithium Valley**



# Public Comment / Comentarios del público

## Comment Instructions:

Limited to 3 minutes per comment

**By computer:** use “raise hand” feature in Zoom

**By telephone:** dial \*9 to “raise hand” and \*6 to mute/unmute your phone line

\*\*\*\*\*

Instrucciones para los comentarios:

Límite de 3 minutos por comentario

**Por computadora:** use la función de “levantar la mano” de Zoom

**Por teléfono:** marque \*9 para “levantar la mano” y \*6 para silenciar y para activar el sonido





# Planning for Upcoming Workshops / Planificación de próximos talleres y reuniones

- Determination of Agenda Topics, Speakers, and Presentations for Future Meetings
  - Possible Continuation of Environmental Impacts Workshop
  - Incentives Workshop
  - Overcoming Challenges to Lithium Extraction Workshop
- Future Meeting Schedule and Locations
- Determinación de los temas de la agenda, los oradores y las presentaciones para futuras reuniones
  - Posible continuación del Taller de impacto ambiental
  - Taller de incentivos
  - Taller de superación de los desafíos de la extracción de litio
- Cronograma y ubicación de las futuras reuniones



# Public Comment / Comentarios del público

## Comment Instructions:

Limited to 2 minutes per comment

**By computer:** use “raise hand” feature in Zoom

**By telephone:** dial \*9 to “raise hand” and \*6 to mute/unmute your phone line

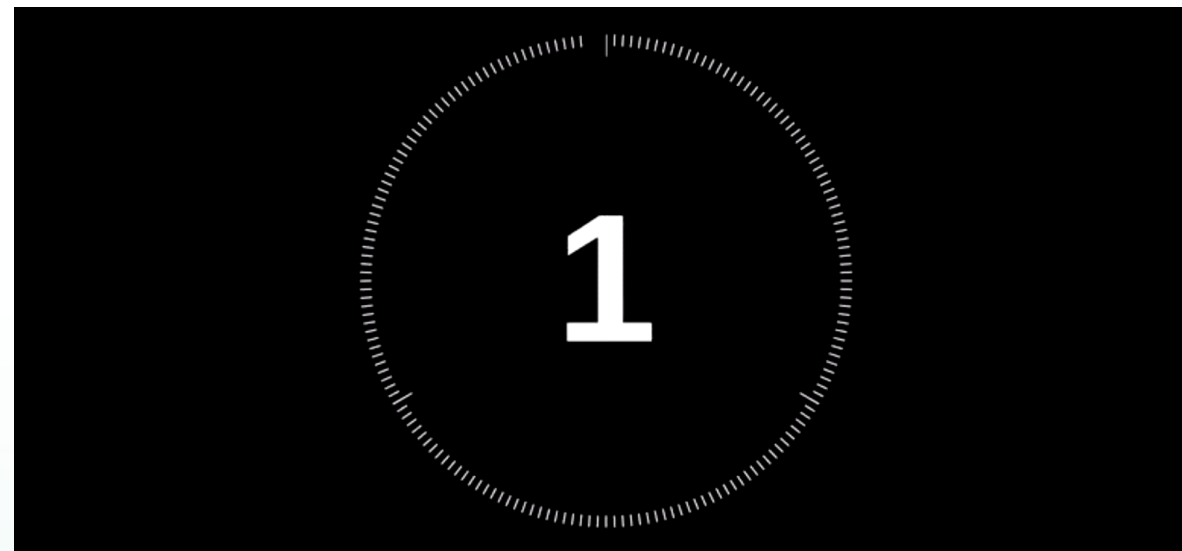
\*\*\*\*\*

Instrucciones para los comentarios:

Límite de 2 minutos por comentario

**Por computadora:** use la función de “levantar la mano” de Zoom

**Por teléfono:** marque \*9 para “levantar la mano” y \*6 para silenciar y para activar el sonido





# Informational Items/ Temas informativos

- Lithium Valley Commissioner Updates
- Actualización sobre el comisionado de Lithium Valley



# Public Comment / Comentarios del público

## Comment Instructions:

Limited to 2 minutes per comment

**By computer:** use “raise hand” feature in Zoom

**By telephone:** dial \*9 to “raise hand” and \*6 to mute/unmute your phone line

\*\*\*\*\*

Instrucciones para los comentarios:

Límite de 2 minutos por comentario

**Por computadora:** use la función de “levantar la mano” de Zoom

**Por teléfono:** marque \*9 para “levantar la mano” y \*6 para silenciar y para activar el sonido





# Public Comment / Comentarios del público

## Comment Instructions:

Limited to 2 minutes per comment

**By computer:** use “raise hand” feature in Zoom

**By telephone:** dial \*9 to “raise hand” and \*6 to mute/unmute your phone line

\*\*\*\*\*

Instrucciones para los comentarios:

Límite de 2 minutos por comentario

**Por computadora:** use la función de “levantar la mano” de Zoom

**Por teléfono:** marque \*9 para “levantar la mano” y \*6 para silenciar y para activar el sonido





# Adjourn / Levantar la sesión





Webpage / Página Web: [www.energy.ca.gov/LithiumValleyCommission](http://www.energy.ca.gov/LithiumValleyCommission)  
List Serv / Lista de Correo Electrónico: Lithium Valley Commission

**Thank you!**

**¡Gracias!**

[LithiumValleyCommission@energy.ca.gov](mailto:LithiumValleyCommission@energy.ca.gov)



**Break / Receso**

Return at / **Volvemos a las**

[LithiumValleyCommission@energy.ca.gov](mailto:LithiumValleyCommission@energy.ca.gov)