

DOCKETED

| | |
|-------------------------|--|
| Docket Number: | 20-LITHIUM-01 |
| Project Title: | Lithium Valley Commission |
| TN #: | 242457 |
| Document Title: | Paul Brian English Comments - presentation |
| Description: | N/A |
| Filer: | System |
| Organization: | Paul Brian English |
| Submitter Role: | Public |
| Submission Date: | 3/24/2022 4:58:56 PM |
| Docketed Date: | 3/24/2022 |

Comment Received From: Paul Brian English
Submitted On: 3/24/2022
Docket Number: 20-LITHIUM-01

presentation

Additional submitted attachment is included below.

Existing Cumulative Environmental Exposures and Poor Health Outcomes in Coachella/Imperial Valleys

Paul English, PhD, MPH
Director
Tracking California
Public Health Institute

3/24/2022

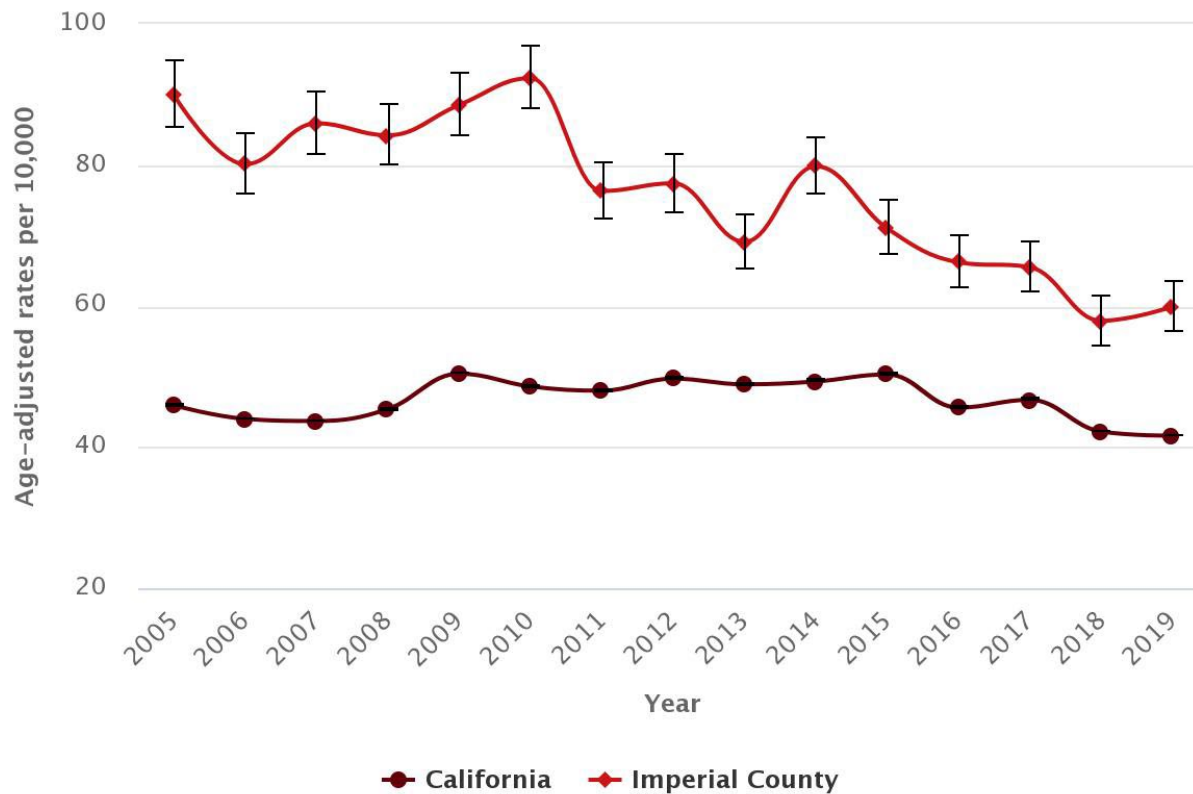


Lithium Valley Commission Meeting
paul.english@tracking.california.org

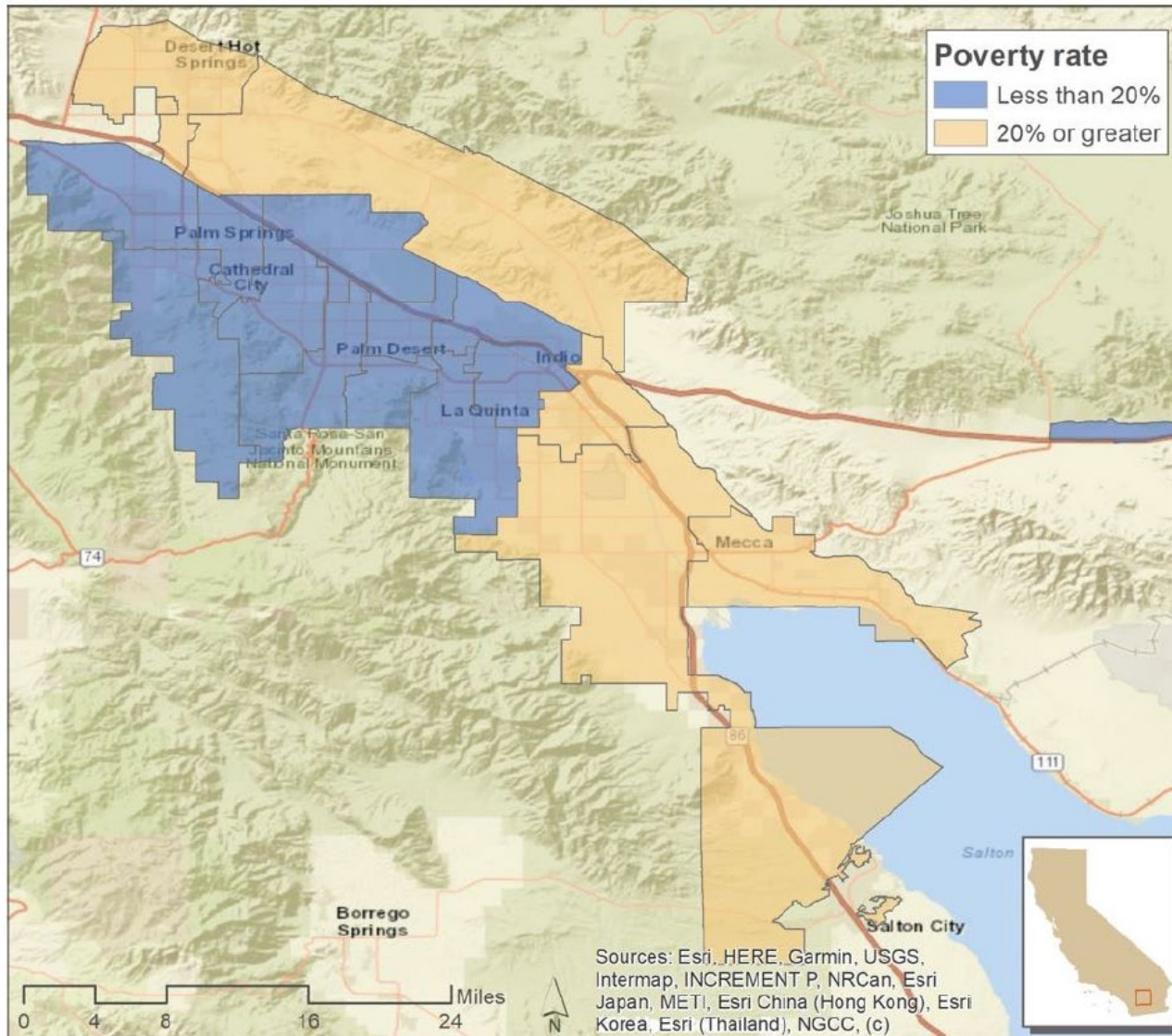
History of Poor Health Outcomes in Eastern Coachella/Imperial Valleys



Emergency department visits due to asthma, Both sexes, All Ages/Races, Imperial County



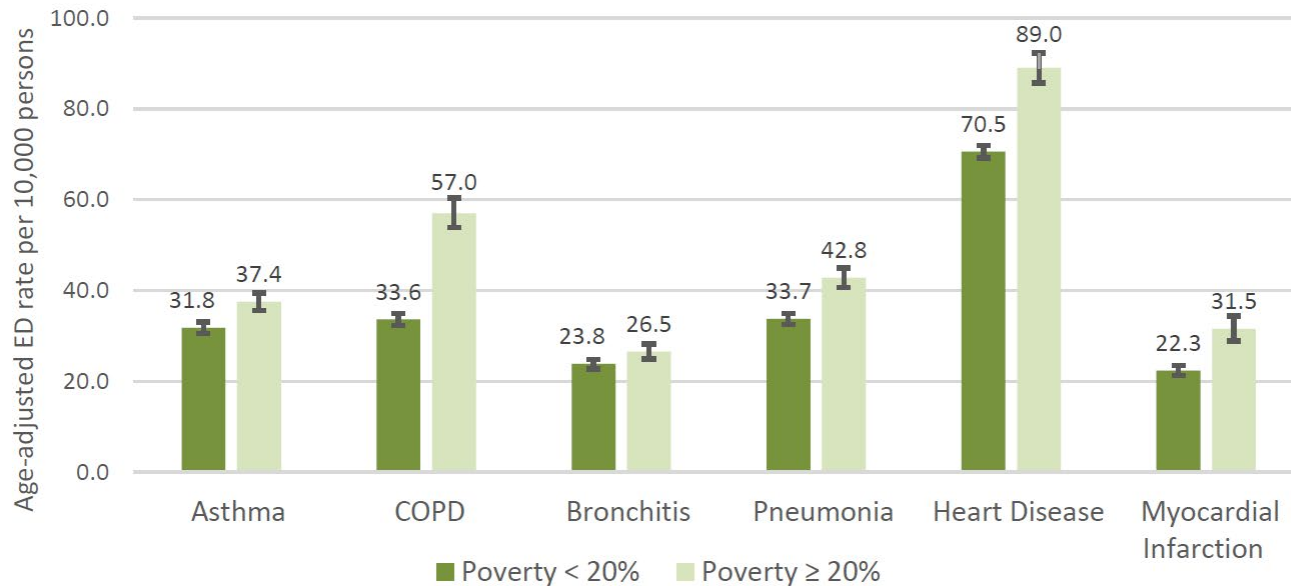
History of Poor Health Outcomes in Eastern Coachella/Imperial Valleys



History of Poor Health Outcomes in Eastern Coachella/Imperial Valleys



Figure 5. Age-adjusted ED visit rates per 10,000 for lower- and higher-poverty ZIP codes in the Coachella Valley, 2016-2018. COPD includes ages 25+ and MI includes ages 35+; all other conditions are all ages. Includes 95% confidence intervals.



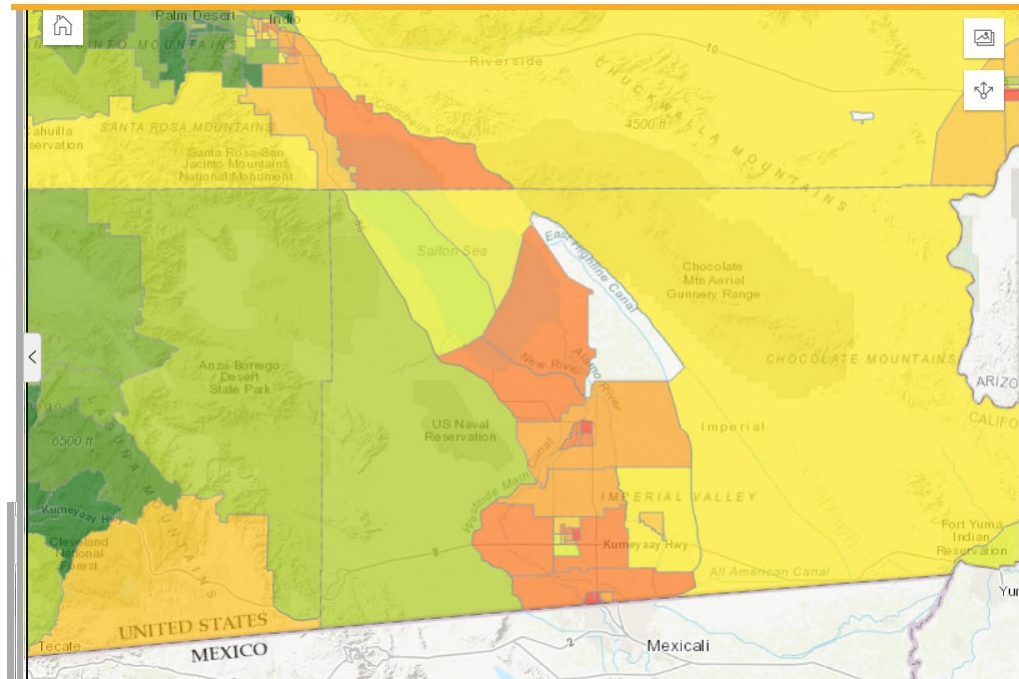
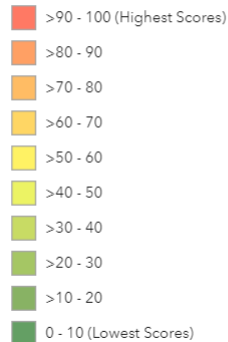
Environmental Exposures



Census tracts around the Salton Sea are in top 2 deciles of cumulative impacts according to Cal/EPA (CalEnviroScreen 4.0) “disproportionately burdened by multiple sources of pollution”

Overall Percentile

CalEnviroScreen 4.0 Results



Best Practices: EIR vs. HIA



California Supreme Court (2019): EIR must show a “reasonable effort to substantively connect a project’s air quality impacts to likely health consequences”

However: A Health Impact Assessment is “a more complete analysis of health effects [which] would consider all potentially significant direct, indirect, and cumulative health impacts associated with the proposed action and alternatives.” (Human Impact Partners, 2022)

“Health Impact Assessment provides a framework.. to determine the potential positive and negative effects of a proposed policy, plan or development project on human health and how those impacts might be distributed within the population. (Dannenberg, et al 2006)

Winners and Losers



Winners: Reduction of Unemployment: Health Benefits

Note: Consideration of Occupational Health Hazards

Losers: Asthmatic children:

Potential for increase in degradation of air quality and other hazards

More needs to be known about environmental and health impacts of geothermal mining